



**EL DORADO COUNTY
BOARD OF
SUPERVISORS**

**UPDATE ON THE
CAPITAL SOUTHEAST
CONNECTOR**

October 20, 2015

**TOM ZLOTKOWSKI
EXECUTIVE DIRECTOR**

TODAY'S PRESENTATION

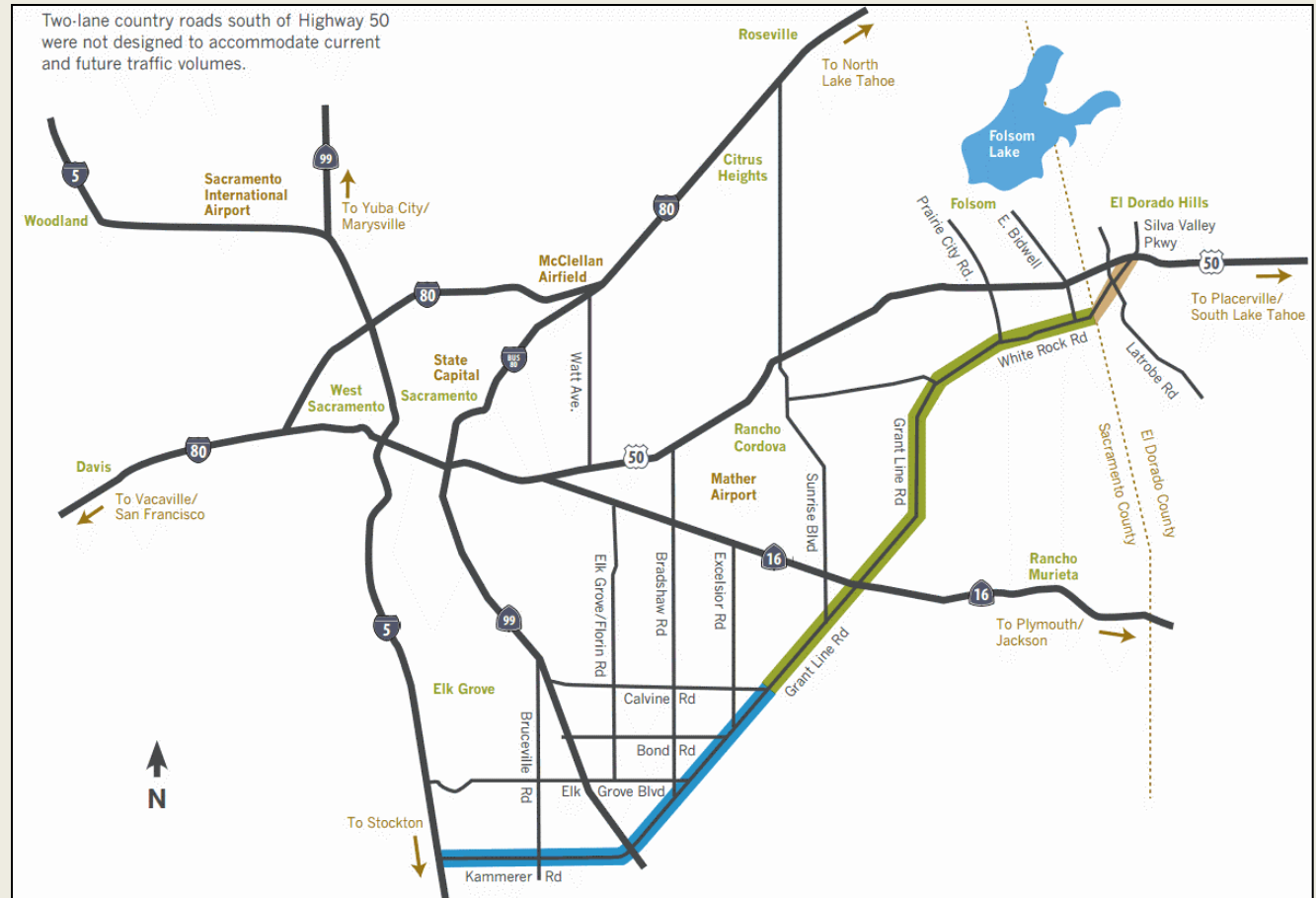


- ✓ Update on Connector JPA Recent Activities
- ✓ Update on Folsom/El Dorado Segment
- ✓ Status of Folsom/El Dorado Segment Environmental Documentation
- ✓ Status of Project Funding with Focus on the El Dorado Segment
- ✓ Questions

RECENT CONNECTOR JPA ACTIVITY

Highlights:

- 19 miles in Preliminary Engineering
 - Elk Grove
 - Rancho Cordova
 - Folsom/El Dorado
- Legislation
- General Plan Amendments



RECENT CONNECTOR JPA ACTIVITY

Construction:

- Grant Line Road Interchange
 - Elk Grove
- Grant Line Road RxR Overcrossing
 - Elk Grove
- White Rock Road Reconstruction
 - Sac County
- Silva Valley Parkway Interchange
 - El Dorado

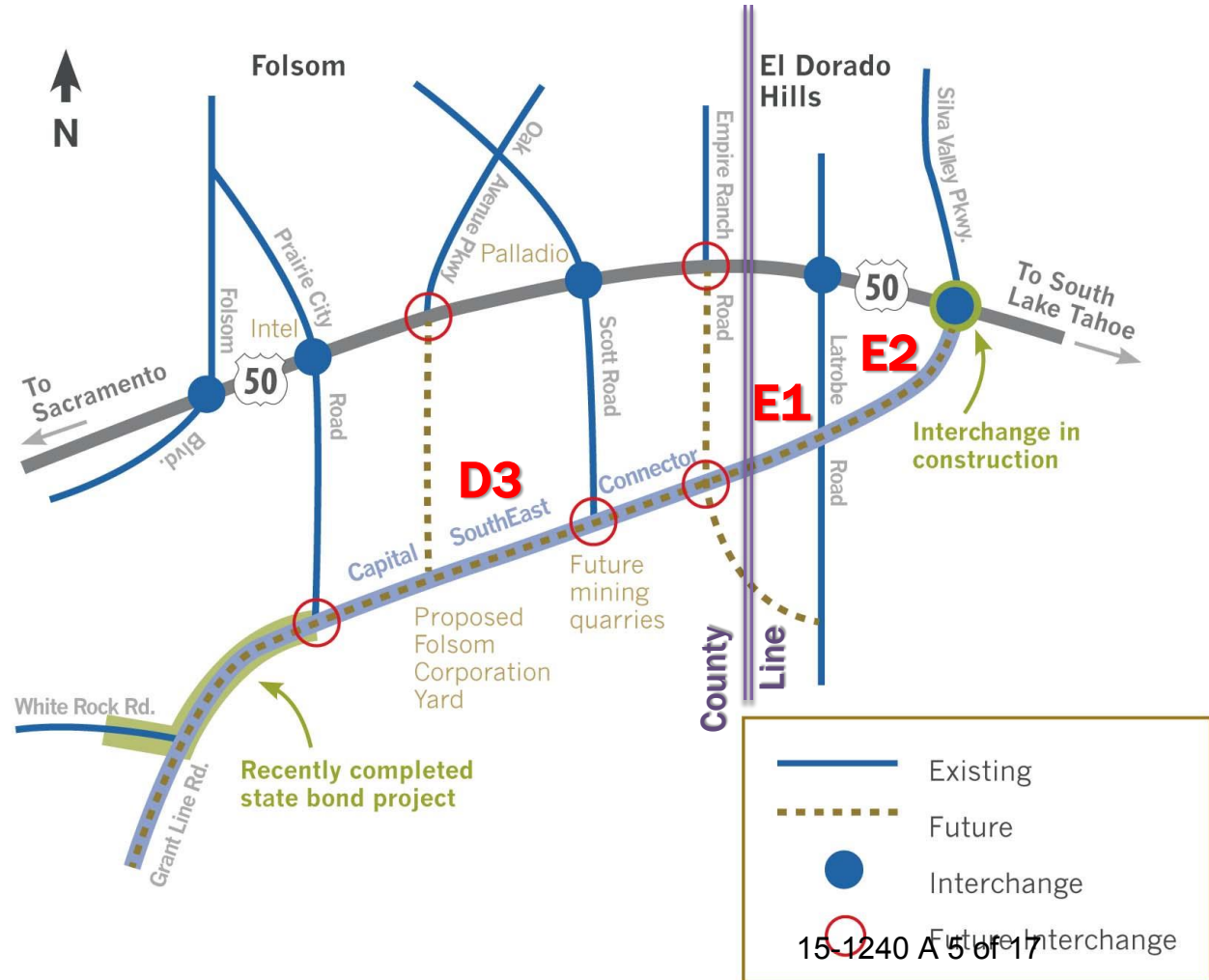


FOLSOM/EL DORADO SEGMENT (D3/E1)

White Rock Road

From White Rock Rd/Prairie City Rd Intersection to White Rock Rd/ Latrobe Road Intersection

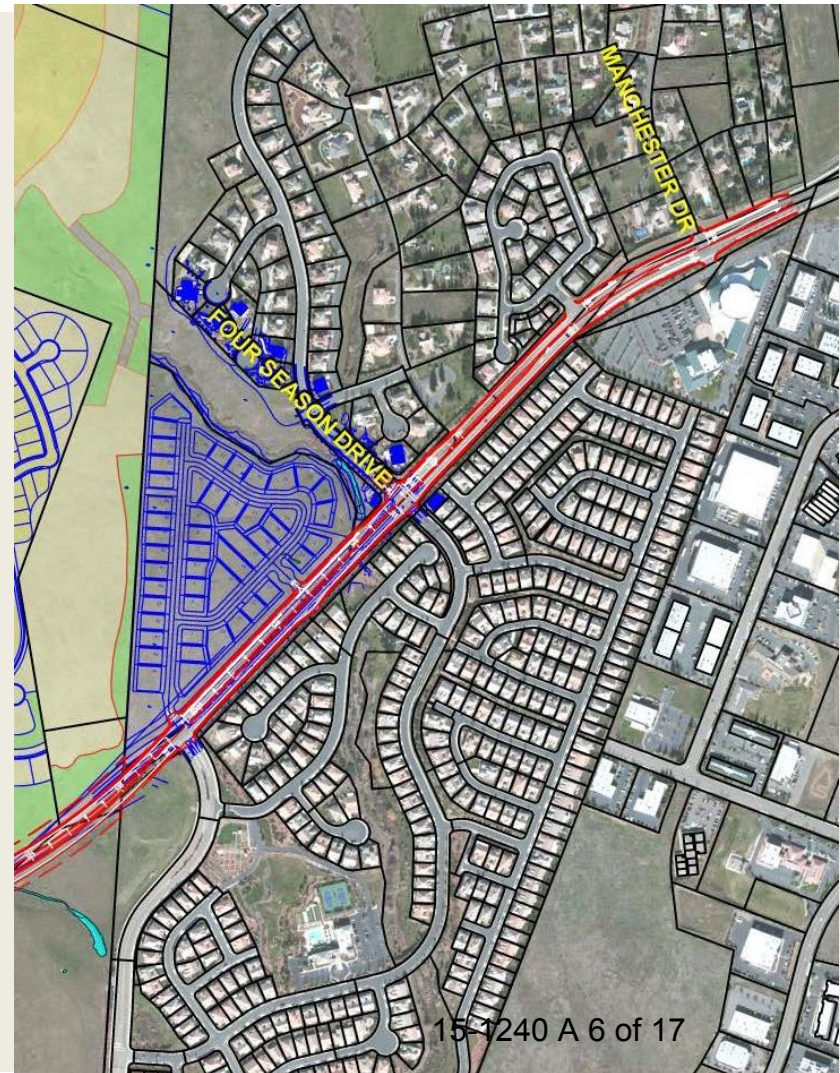
- 5.3 Miles +/-
- Expressway in Sacramento County
- Thoroughfare in El Dorado County
- 4-lanes, consistent with current general plan



FOLSOM/EL DORADO SEGMENT (D3/E1)

El Dorado County Involvement

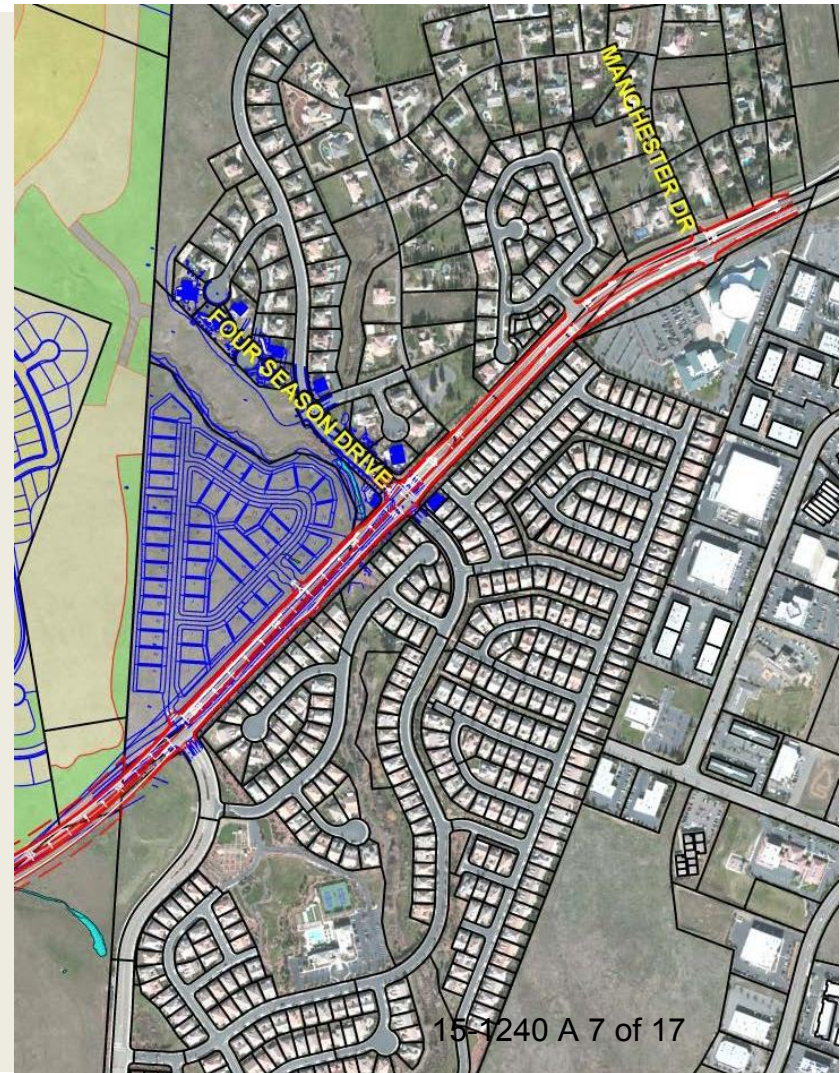
- District 1 Supervisor is a member of the JPA Board of Directors
- County staff involved in the entire Connector Project Development Team
 - Long Range Planning Department
- County staff involved in the Folsom/El Dorado Segment Project Delivery Team
 - Department of Transportation



FOLSOM/EL DORADO SEGMENT (D3/E1)

Alignment in El Dorado

- Widening on the north side of the road only to General Plan designation
- Right of Way is already setback and additional property is not required
- Currently in TIM Fee Zone 8
- Physical improvements end at Manchester Dr; minor restriping to Latrobe Rd
- Large subdivision “El Dorado 23” to tie in but not improve public right of way



FOLSOM/EL DORADO SEGMENT (D3/E1)

Benefits to El Dorado County

- Closes the “gap” and provides a continuous 4-lane road into Sacramento County
- Improves safety by reconstructing “hairpin” curves and improving vertical sight distance
- Provides a continuous and safe bicycle and pedestrian facility along White Rock Road
- Sets up connection for the El Dorado Hills Business Park “Connector”



FOLSOM/EL DORADO SEGMENT (D3/E1)

Schedule

- 2015: Environmental Documentation
- 2016-2017: Final Design, Utilities and Right of Way
- 2018: “Shovel Ready” awaiting construction funding



FOLSOM/EL DORADO SEGMENT ENVIRONMENTAL DOCUMENTATION

Environmental Document

Initial Study / Mitigated Negative Declaration

All environmental impacts are less than significant or are made less than significant through mitigation

The IS/MND summarizes efforts to study impacts to:

- Farmland
- Biological Resources
- Wetlands
- Cultural Resources
- Noise
- Traffic
- Air Quality
- Hazardous Waste

FOLSOM/EL DORADO SEGMENT ENVIRONMENTAL DOCUMENTATION

Noise

- Rubberized Asphalt in Segments of El Dorado County to Reduce Noise Levels Below Threshold Levels



Table 20. Comparison of Estimated Noise Levels

Receptor # and Location	Existing (2015) Noise Level (dBA Ldn)	Predicted Noise Level for No-Build (2035) (dBA Ldn)	Predicted Noise Level with Project (2035) (dBA Ldn)	Noise Impact with Project?
El Dorado County				
R-1 800 White Rock Road El Dorado Hills	51	55	54	No
R-2 407 Bailey Court El Dorado Hills	48	53	55	No
R-3 7016 Rushwood Drive El Dorado Hills	56	60	60 (57 with rubberized asphalt)	Less than significant impact with rubberized asphalt mitigation, resulting in a 3 dB noise attenuation.
R-4 406 Bailey Court El Dorado Hills	44	48	49	No
R-5 Springfield Meadows CSD	47	51	52	No
R-6 Four Seasons at El Dorado Hills	52	55	56	No
R-7a White Rock Road across 102 Slate Ridge Court El Dorado Hills	53	54	56	No
R-7 102 Slate Ridge Court El Dorado Hills	49	43	53	No

FOLSOM/EL DORADO SEGMENT ENVIRONMENTAL DOCUMENTATION

Traffic

- True “Gap Closure” between 4-lane segments
- Volumes in the vicinity of Latrobe Road have shown a steady increase, even through the recession
- Phase 1: Divided 4-lane facility with signalized intersections per EDC General Plan

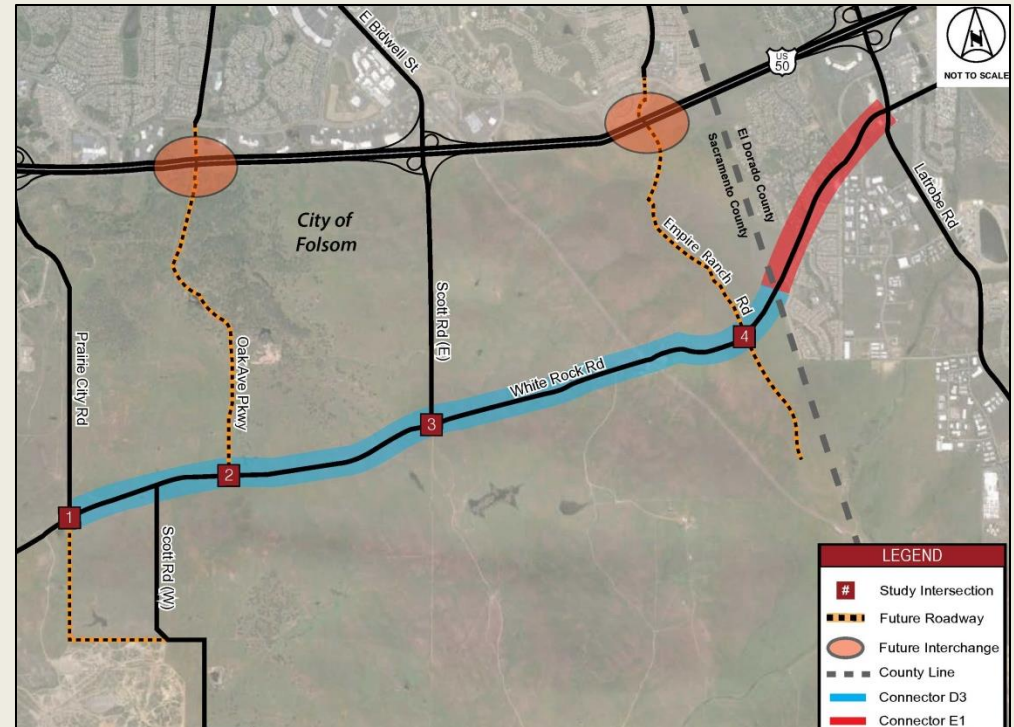


Figure from Kimley Horn Traffic Evaluation Memo (Aug 2015)

FOLSOM/EL DORADO SEGMENT ENVIRONMENTAL DOCUMENTATION

Environmental Document Schedule

- October 13 – Public Circulation
- October 23 – Public Hearing at JPA Board Meeting
- November 13 – Comment Period Closes
- November 20 – JPA Board Meeting and Discussion of Substantial Public Comments
- December 18 – JPA Board Meeting and Adoption of MND
- JPA certifies as the lead agency – No EDC Board action necessary

2015		
JAN	FEB	MAR
1 2 3	1 2 3 4 5 6 7	1 2 3 4 5 6 7
4 5 6 7 8 9 10	8 9 10 11 12 13 14	8 9 10 11 12 13 14
11 12 13 14 15 16 17	15 16 17 18 19 20 21	15 16 17 18 19 20 21
18 19 20 21 22 23 24	22 23 24 25 26 27 28	22 23 24 25 26 27 28
25 26 27 28 29 30 31		29 30 31
APR	MAY	JUN
1 2 3 4	1 2	1 2 3 4 5 6
5 6 7 8 9 10 11	3 4 5 6 7 8 9	7 8 9 10 11 12 13
12 13 14 15 16 17 18	10 11 12 13 14 15 16	14 15 16 17 18 19 20
19 20 21 22 23 24 25	17 18 19 20 21 22 23	21 22 23 24 25 26 27
26 27 28 29 30	24 25 26 27 28 29 30	28 29 30
	31	
JUL	AUG	SEP
1 2 3 4	1	1 2 3 4 5
5 6 7 8 9 10 11	2 3 4 5 6 7 8	6 7 8 9 10 11 12
12 13 14 15 16 17 18	9 10 11 12 13 14 15	13 14 15 16 17 18 19
19 20 21 22 23 24 25	16 17 18 19 20 21 22	20 21 22 23 24 25 26
26 27 28 29 30 31	23 24 25 26 27 28 29	27 28 29 30
	30 31	
OCT	NOV	DEC
1 2 3	1 2 3 4 5 6 7	1 2 3 4 5
4 5 6 7 8 9 10	8 9 10 11 12 13 14	6 7 8 9 10 11 12
11 12 13 14 15 16 17	15 16 17 18 19 20 21	13 14 15 16 17 18 19
18 19 20 21 22 23 24	22 23 24 25 26 27 28	20 21 22 23 24 25 26
25 26 27 28 29 30 31	29 30	27 28 29 30 31

STATUS OF PROJECT FUNDING WITH FOCUS ON EL DORADO SEGMENT

Anticipated Expenditures to Deliver Segment E1

- \$0.5m Final Design, Utility Coordination, Permits
- \$3.0m Construction
- \$0.5m Construction Management, Survey Staking and Inspection
- All similar costs to 2015 El Dorado CIP
- Potential savings in 2015 dollars: \$2m+/-



STATUS OF PROJECT FUNDING WITH FOCUS ON EL DORADO SEGMENT

Funding Schedule

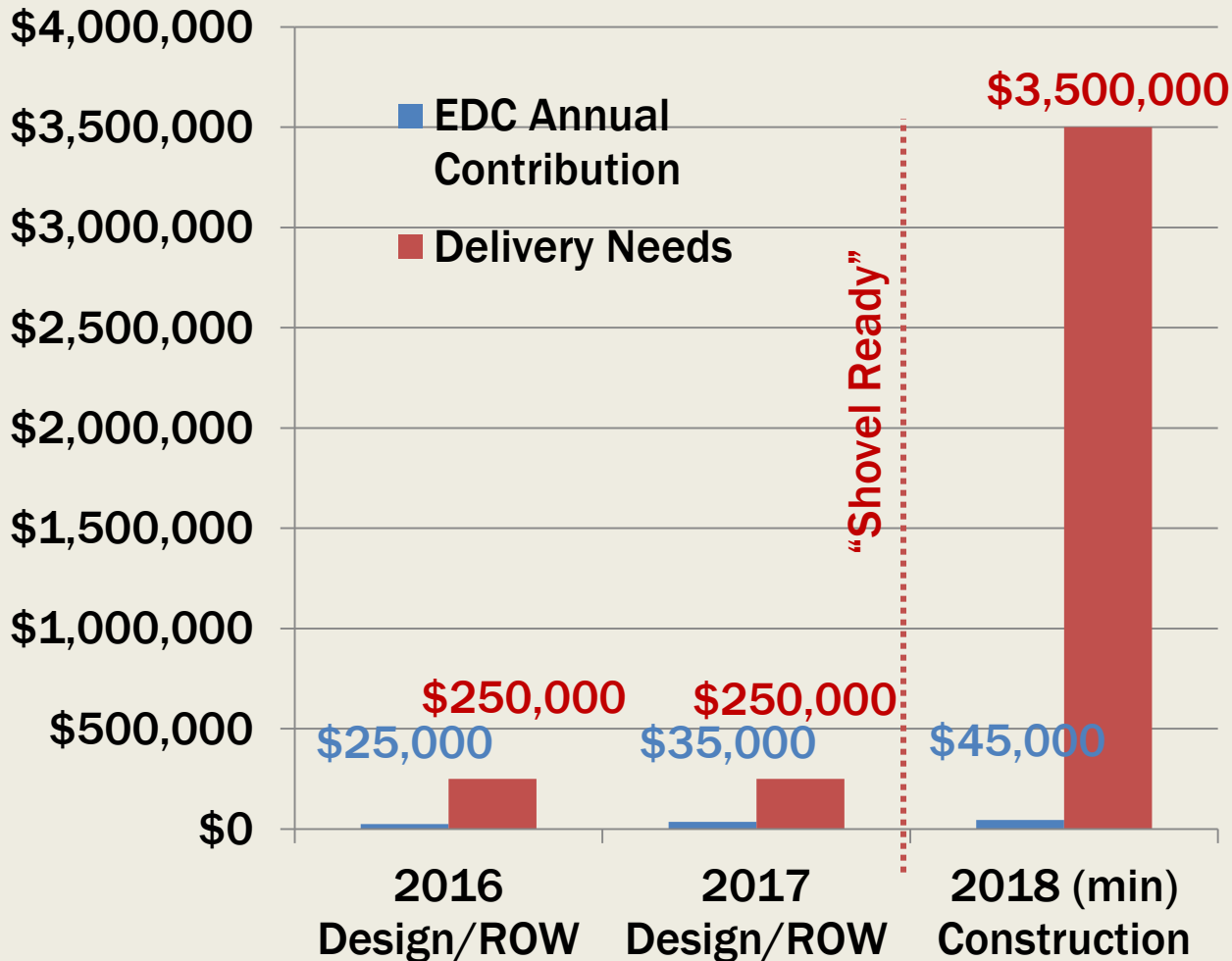
- El Dorado CIP:
 - Project begins sometime between 2025 and 2035
- Connector JPA:
 - With help from El Dorado, could be ready for construction in 2018

Relationship to TIM Fee

- Currently in program (beyond 2025)
- Proposed to be REMOVED



STATUS OF PROJECT FUNDING WITH FOCUS ON EL DORADO SEGMENT



GOAL: Funding gap backfilled with:

- ✓ Local El Dorado County Contribution
- ✓ TIM Fees
- ✓ Regional/State Project Allocations

QUESTIONS?

- Project Website: www.ConnectorJPA.net
- Contact:
 - **Tom Zlotkowski**
Executive Director
916-876-9094 | ZlotkowskiT@ConnectorJPA.net
 - **Derek Minnema**
Project Manager
916-876-9092 | MinnemaD@ConnectorJPA.net

