

INDEX OF SHEETS

Sheet Number	Sheet Title	Sheet Description
1	i	TITLE SHEET
2	ii	INDEX
3	P-1	SITE 1
4	P-2	SITE 2
5	P-3	SITES 3 & 4
6	P-4	SITES 5 & 6
7	P-5	SITE 7
8	P-6	SITES 8 & 9
9	P-7	SITE 10
10	P-8	SITE 11
11	P-9	SITE 12
12	Q-1	QUANTITIES
13	D-1	DETAILS
14	D-2	DETAILS
15	EC-1	EROSION CONTROL
16	TC-1	TRAFFIC CONTROL
17	TC-2	TRAFFIC CONTROL
18	TC-3	TRAFFIC CONTROL
19	TC-4	STAGING AREAS

**COUNTY OF EL DORADO, CA
DEPARTMENT OF TRANSPORTATION**

**PROJECT PLANS FOR THE CONSTRUCTION OF THE 2023
GUARDRAIL UPGRADES MULTIPLE LOCATIONS –
WEST SLOPE PROJECT**

IN THE COUNTY OF EL DORADO, DISTRICTS 3 & 5,
AND UNASSIGNED COUNTY ROAD RIGHTS OF WAY

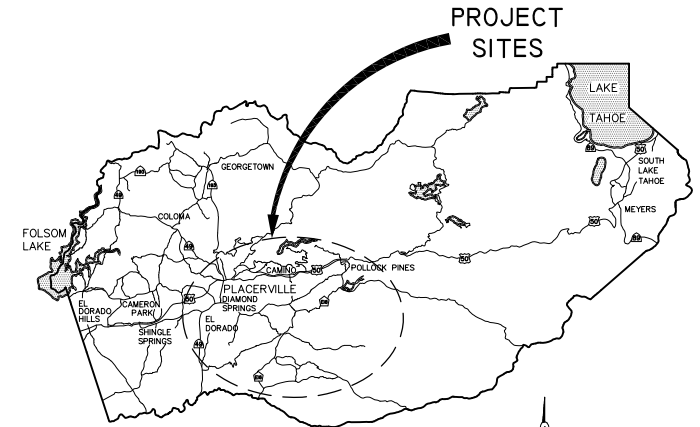
To be supplemented with the 2022 Standard Plans and Specifications of
the California Department of Transportation, including the 2022 Revised
Standard Specifications of the California Department of Transportation,
unless otherwise noted.

BOARD OF SUPERVISORS
I JOHN HIDAHL
II GEORGE TURNBOO
III WENDY THOMAS
IV LORI PARLIN
V BROOK LAINE

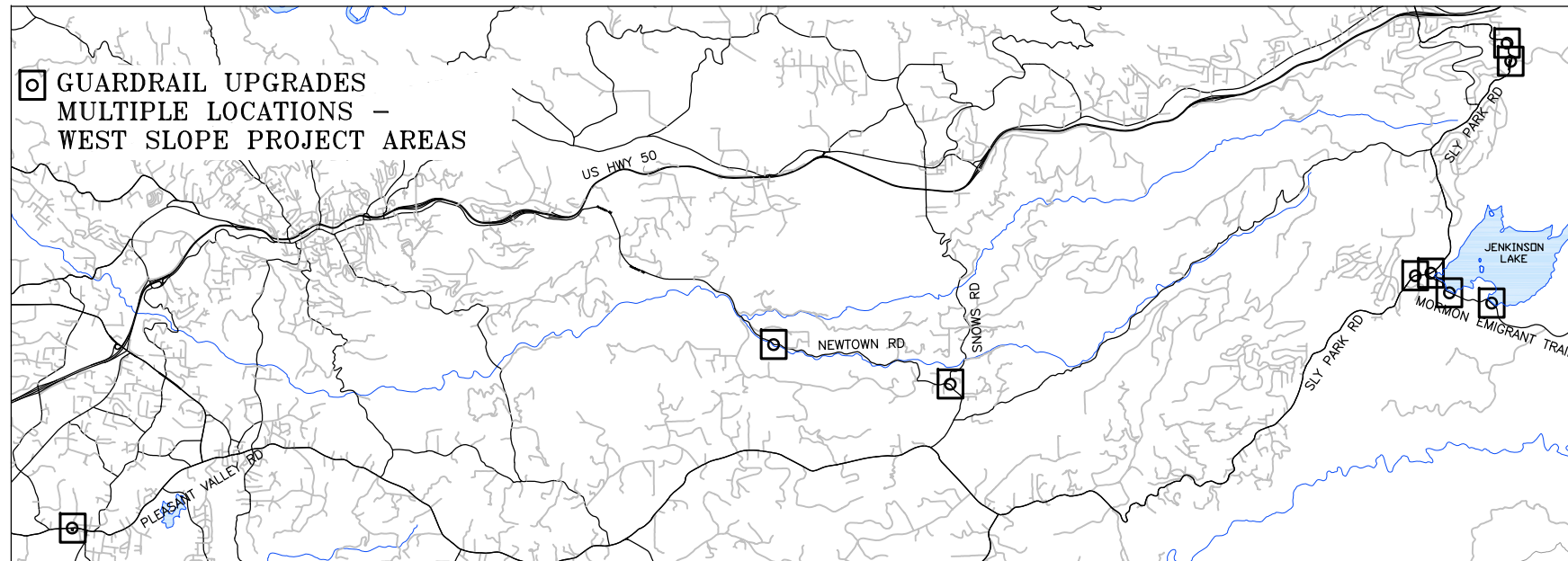
**COUNTY OF EL DORADO
DEPARTMENT OF TRANSPORTATION**
(530) 573-7900 (530) 621-5900
924 B EMERALD BAY RD 2850 FAIRLAKE CT
SOUTH LAKE TAHOE, CA PLACERVILLE, CA
96150 95667

ADOPTED AND APPROVED BY:
WENDY THOMAS, CHAIR, EL DORADO COUNTY BOARD OF SUPERVISORS
RAFAEL MARTINEZ, DIRECTOR, COMMUNITY DEVELOPMENT SERVICES, DEPARTMENT OF TRANSPORTATION
JOHN H. KAHLING, P.E., RCE NO. 52426, DEPUTY DIRECTOR OF ENGINEERING, COMMUNITY DEVELOPMENT SERVICES, DEPARTMENT OF TRANSPORTATION

CONTRACT NO. 7590, CIP NO. 3610 5075
GUARDRAIL UPGRADES MULTIPLE LOCATIONS - WEST SLOPE PROJECT
TITLE SHEET
SHEET I OF 19



VICINITY MAP
COUNTY OF EL DORADO



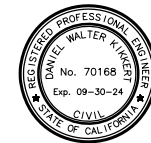
FUNDING SOURCES
HIGHWAY SAFETY IMPROVEMENT PROGRAM

CONTRACTOR'S LICENSE CLASSIFICATION: Bidders shall be properly licensed to perform the Work pursuant to the State Contractor's License Law (Business and Professions Code section 7000 et seq.) and shall possess a CLASS A LICENSE or equivalent combination of Classes required by the categories and type of Work included in the Contract Documents and Plans, at the time the Contract is awarded, and shall maintain a valid license through completion and acceptance of the Work including guarantee and warranty period. Failure of the successful Bidder to obtain proper and adequate licensing for an award of the Contract shall constitute a failure to execute the Contract, and shall result in forfeiture of the Bidders security.

REVISIONS		
MARK	DATE	BY



LOCATION MAP
SCALE: 1" = 2500'

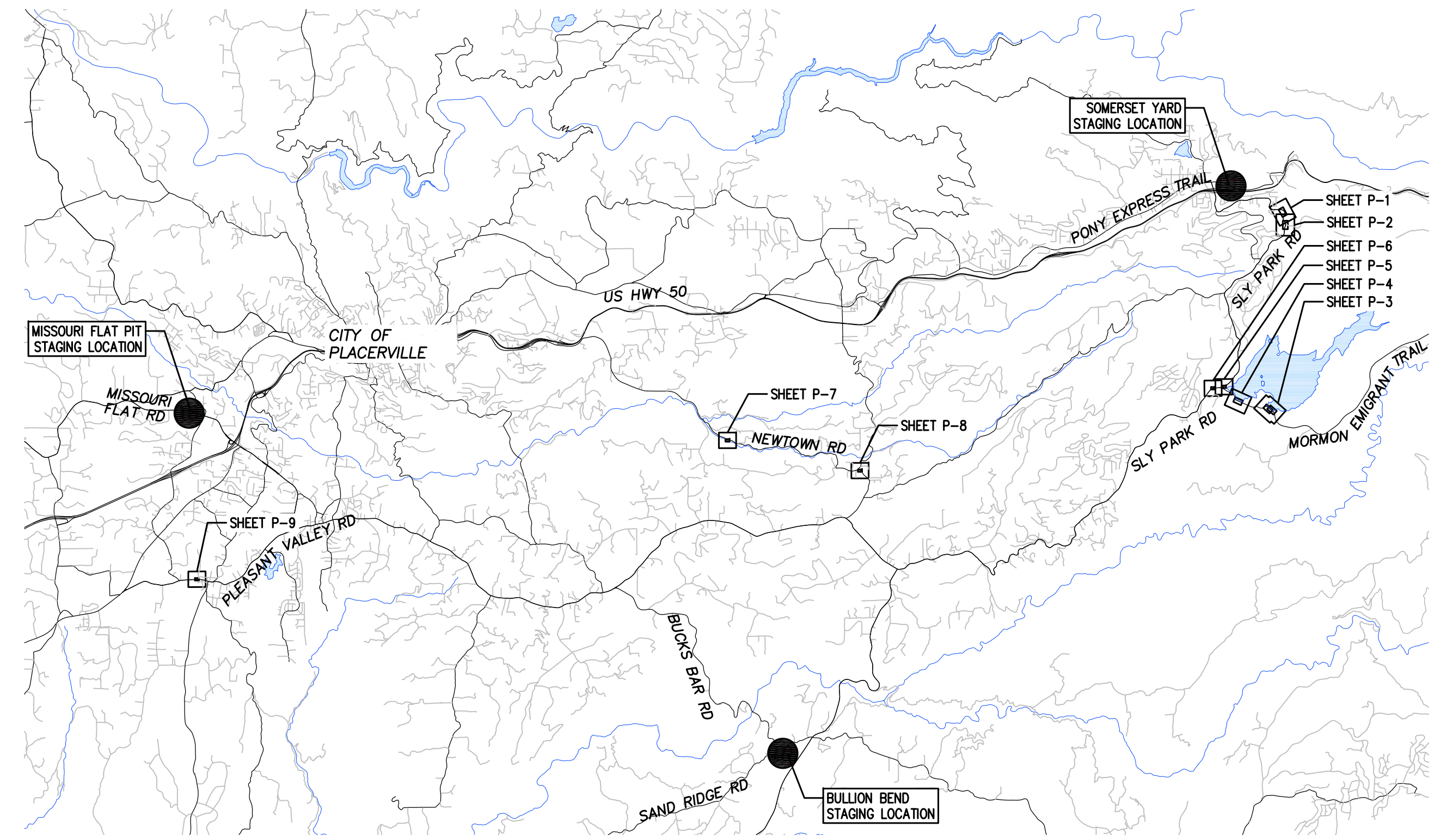


SUBMITTED BY: DANIEL W. KIKKERT P.E.
SENIOR CIVIL ENGINEER
STATE OF CALIFORNIA NO. 70168

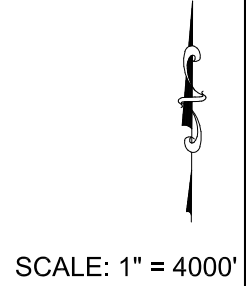
MAY 17, 2023
DATE

Drawing name: \\CD\Users\TD-SJT-Engineering\Civil_3D_PROJECTS\7590\5075 - West Slope Guardrail Engineering\MP\PLAN\3 WS GUARDRAIL INDEX.dwg

FOR REDUCED PLANS
ORIGINAL SCALE IS IN INCHES
2
1
0



● - STAGING LOCATIONS (SEE TC-4 FOR DETAILED LOCATION MAPS)



REVISION	NUMBER	DATE	DESCRIPTION	BY



PREPARED UNDER THE SUPERVISION OF:

 REGISTERED CIVIL ENGINEER
 DATE: **MAY 17, 2023**

DESIGNED: DMG
 DRAWN: DMG
 CHECKED: DWK
 DATE: 5/2023
 ROAD NUMBER: ---



COUNTY OF EL DORADO
 DEPARTMENT OF TRANSPORTATION

GUARDRAIL UPGRADES MULTIPLE LOCATIONS -
 WEST SLOPE PROJECT
 INDEX

SHEET
 ii
 2 OF 19
 CONTRACT NO.
 7590
 CIP No.
 3610 5075

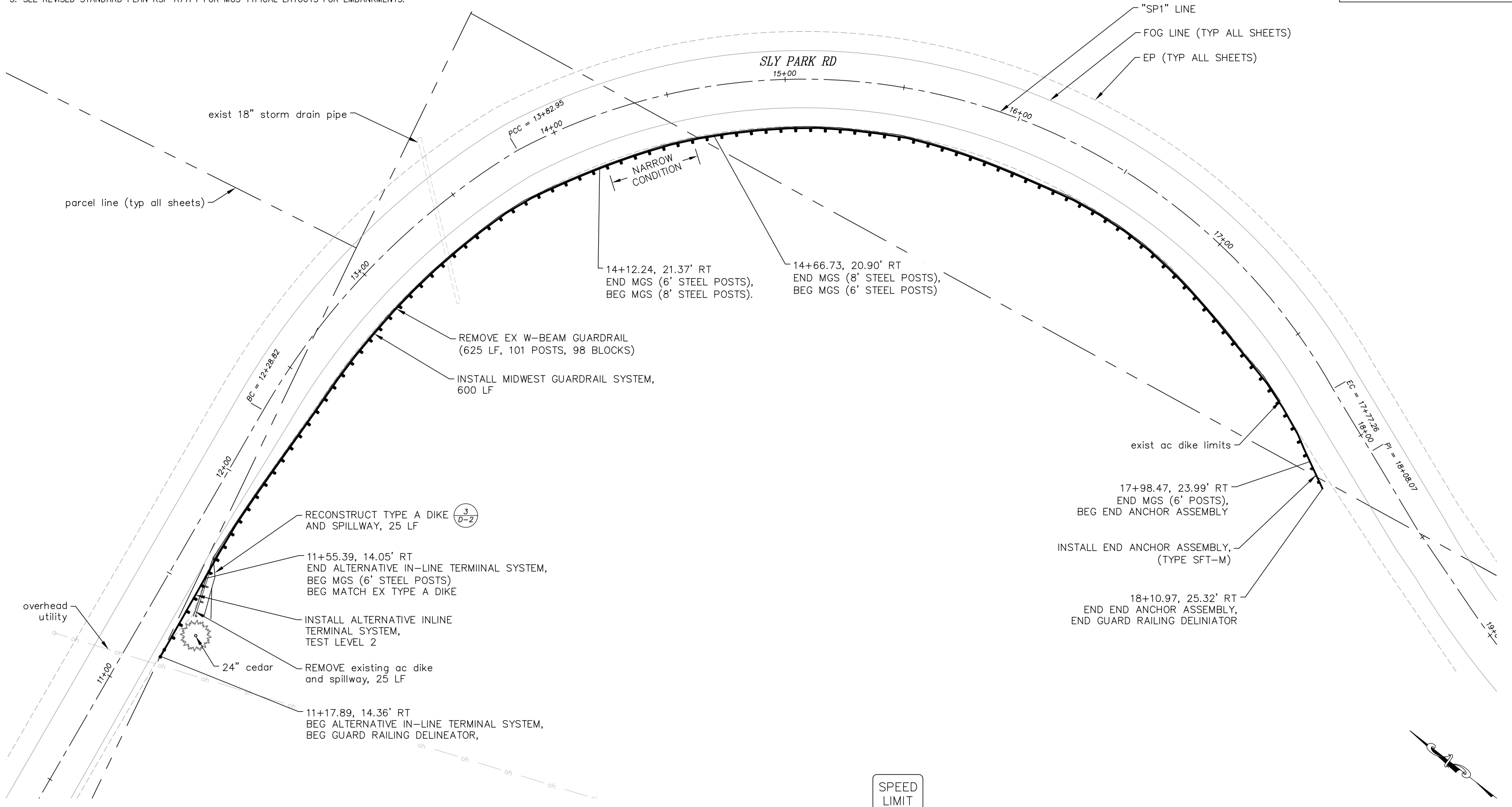
NOTES:

1. SEE REVISED STANDARD PLAN RSP A77L2 FOR MGS STANDARD RAILING SECTION (STEEL POST WITH NOTCHED RECYCLED PLASTIC BLOCK).
2. SEE REVISED STANDARD PLAN RSP A77S1 FOR MGS END ANCHOR ASSEMBLY (TYPE SFT-M) DETAILS.
3. SEE REVISED STANDARD PLAN RSP A77N3 FOR MGS TYPICAL LINE POST EMBEDMENT AND HINGE POINT OFFSET DETAILS.
4. SEE REVISED STANDARD PLAN RSP A77N4 FOR MGS TYPICAL RAILING DELINEATION AND DIKE POSITIONING DETAILS.
5. SEE REVISED STANDARD PLAN RSP A77P1 FOR MGS TYPICAL LAYOUTS FOR EMBANKMENTS.

!! WARNING !!

THE LOCATION AND/OR ELEVATION OF EXISTING UNDERGROUND UTILITIES SHOWN ON THESE PLANS ARE ONLY APPROXIMATE. CONTRACTOR TO VERIFY LOCATION AND ELEVATION OF ALL EXISTING UNDERGROUND UTILITIES.

DRAWING NAME: \\C:\Users\jtd\OneDrive - West Slope\Projects\7590-5075 - West Slope\Guardrail\Engineering\MP\PLAN-12 WS GUARDRAIL MP\PLAN.dwg

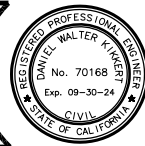


SITE 1: SLY PARK RD P.M. 9.86, 670'

SPEED
LIMIT
40

SCALE: 1" = 20'

REVISION	NUMBER	DATE	DESCRIPTION	BY



PREPARED UNDER THE SUPERVISION OF:

 REGISTERED CIVIL ENGINEER
 DATE: **MAY 17, 2023**

DESIGNED: DMG
 DRAWN: DMG
 CHECKED: DWK
 DATE: 5/2023
 ROAD NUMBER: ---



COUNTY OF EL DORADO
 COMMUNITY DEVELOPMENT SERVICES
 TRANSPORTATION DEPARTMENT

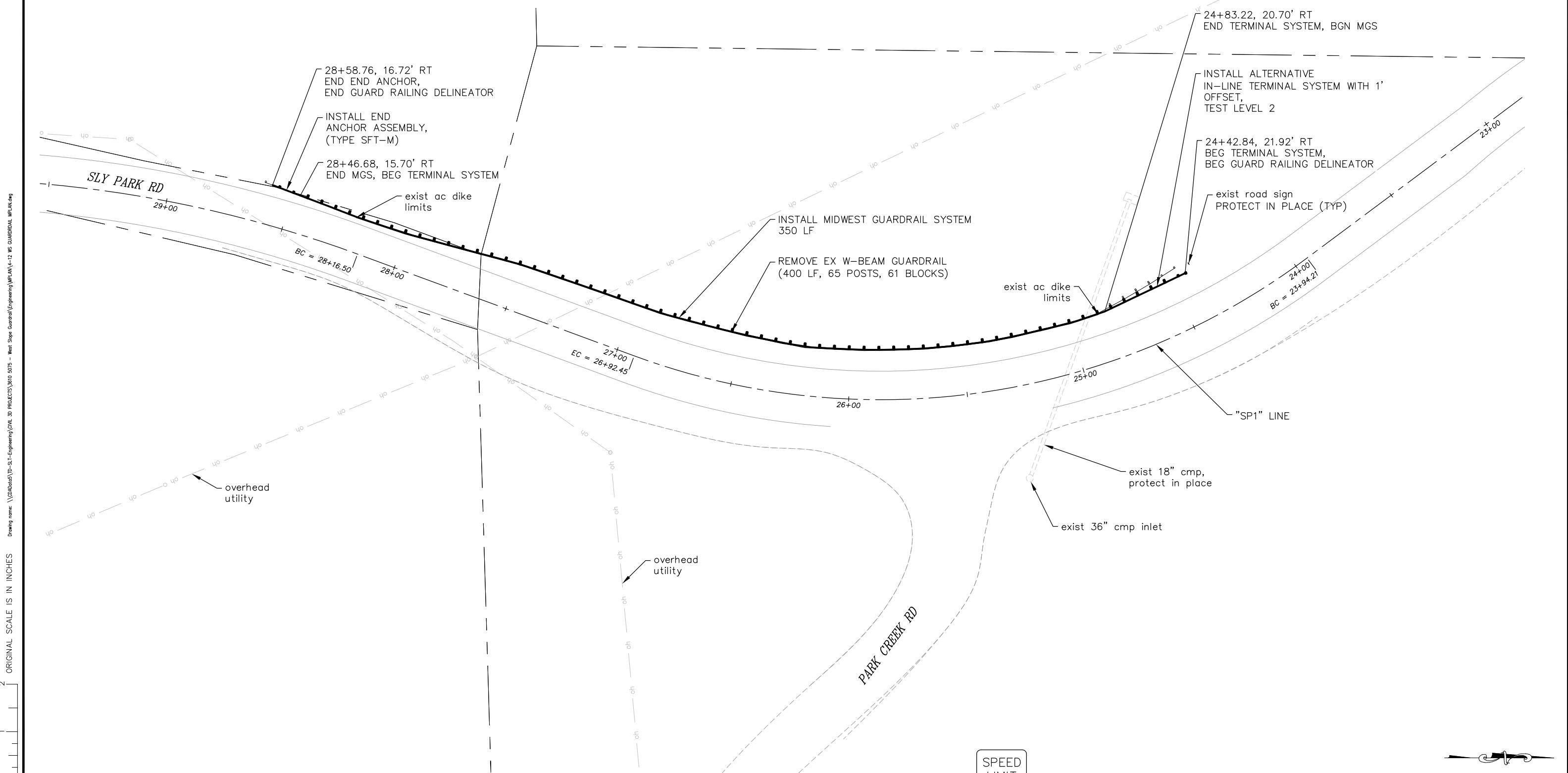
GUARDRAIL UPGRADES MULTIPLE LOCATIONS -
 WEST SLOPE PROJECT
 SITE 1

SHEET
P-1
 3 OF 19
 CONTRACT NO.
7590
 CIP No.
3610 5075

NOTES:

1. SEE REVISED STANDARD PLAN RSP A77L2 FOR MGS STANDARD RAILING SECTION (STEEL POST WITH NOTCHED RECYCLED PLASTIC BLOCK)..
2. SEE REVISED STANDARD PLAN RSP A77S1 FOR MGS END ANCHOR ASSEMBLY (TYPE SFT-M) DETAILS.
3. SEE REVISED STANDARD PLAN RSP A77N4 FOR MGS TYPICAL RAILING DELINEATION AND DIKE POSITIONING DETAILS.
5. SEE REVISED STANDARD PLAN RSP A77P1 FOR MGS TYPICAL LAYOUTS FOR EMBANKMENTS.

!! WARNING !!
 THE LOCATION AND/OR ELEVATION OF EXISTING UNDERGROUND UTILITIES SHOWN ON THESE PLANS ARE ONLY APPROXIMATE. CONTRACTOR TO VERIFY LOCATION AND ELEVATION OF ALL EXISTING UNDERGROUND UTILITIES.



SITE 2: SLY PARK RD P.M. 9.66

SPEED LIMIT
40



SCALE: 1" = 20'

FOR REDUCED PLANS ORIGINAL SCALE IS IN INCHES

REVISION	NUMBER	DATE	DESCRIPTION	BY



PREPARED UNDER THE SUPERVISION OF:

 REGISTERED CIVIL ENGINEER
 DATE: **MAY 17, 2023**

DESIGNED: DMG
 DRAWN: DMG
 CHECKED: DWK
 DATE: 5/2023
 ROAD NUMBER: ---



COUNTY OF EL DORADO
 COMMUNITY DEVELOPMENT SERVICES
 TRANSPORTATION DEPARTMENT

GUARDRAIL UPGRADES MULTIPLE LOCATIONS -
 WEST SLOPE PROJECT
 SITE 2

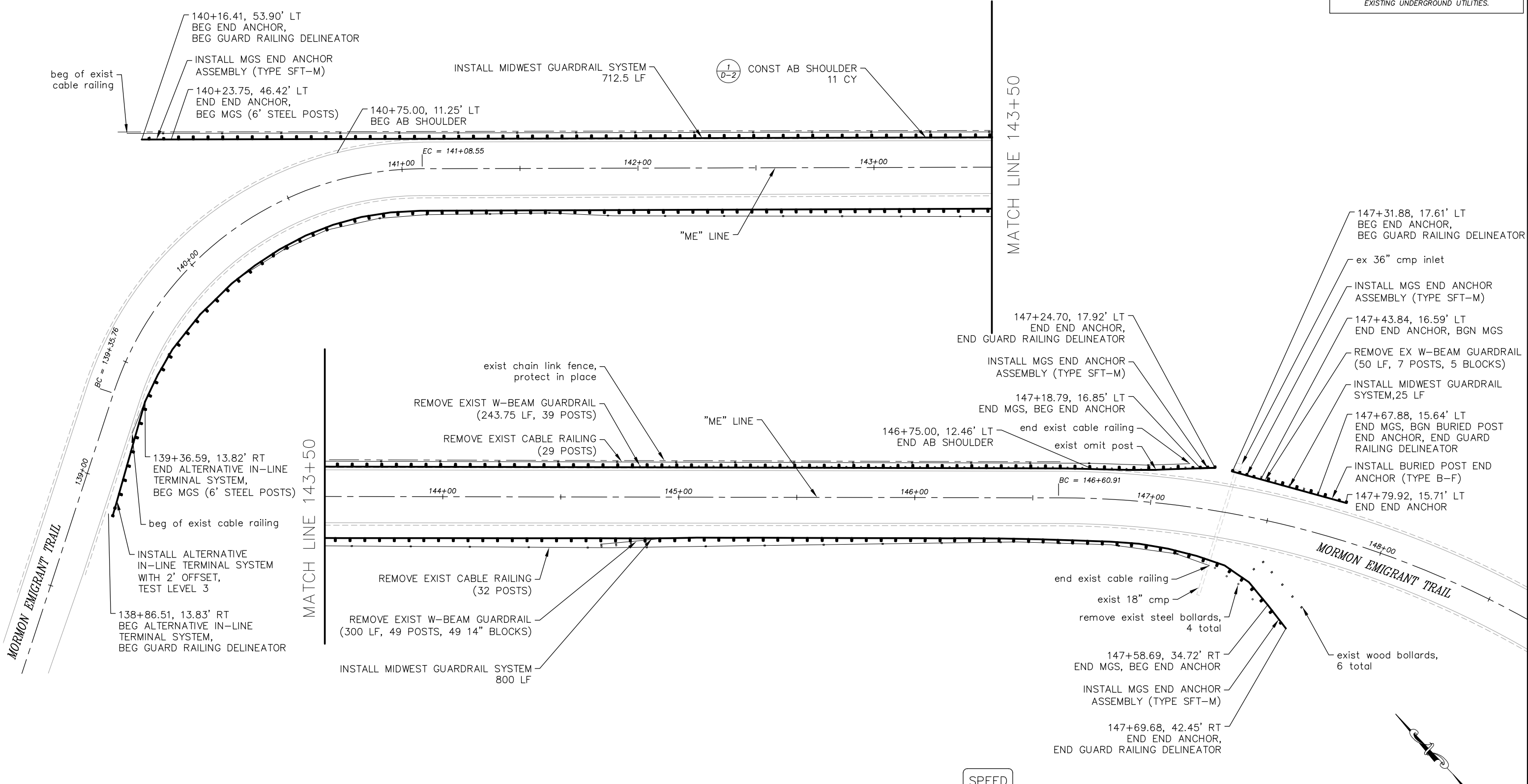
SHEET
P-2
 4 OF 19
 CONTRACT NO.
7590
 CIP No.
3610 5075

NOTES:

1. SEE REVISED STANDARD PLAN RSP A77L2 FOR MGS STANDARD RAILING SECTION (STEEL POST WITH NOTCHED RECYCLED PLASTIC BLOCK).
2. SEE REVISED STANDARD PLAN RSP A77S1 FOR MGS END ANCHOR ASSEMBLY (TYPE SFT-M) DETAILS.
3. SEE REVISED STANDARD PLAN RSP A77T2 FOR MGS BURIED POST END ANCHOR (TYPE B-F) DETAILS.
4. SEE REVISED STANDARD PLAN RSP A77N4 FOR MGS TYPICAL RAILING DELINEATOR AND DIKE POSITIONING DETAILS.
5. SEE REVISED STANDARD PLAN RSP A77P1 FOR MGS TYPICAL LAYOUTS FOR EMBANKMENTS.

!! WARNING !!
 THE LOCATION AND/OR ELEVATION OF EXISTING UNDERGROUND UTILITIES SHOWN ON THESE PLANS ARE ONLY APPROXIMATE. CONTRACTOR TO VERIFY LOCATION AND ELEVATION OF ALL EXISTING UNDERGROUND UTILITIES.

Drawing name: \\CD\Users\TD-SJT-Engineering\Civil_3D_PROJECTS\7590_5075 - West Slope Guardrail\Engineering\MP\PLAN-12 MS GUARDRAIL.MPJ\AN.dwg
 ORIGINAL SCALE IS IN INCHES
 FOR REDUCED PLANS



SITES 3 & 4: EMIGRANT TRAIL AT SECOND (EASTERN) DAM

SPEED
LIMIT
55

SCALE: 1" = 20'

REVISION	NUMBER	DATE	DESCRIPTION	BY



PREPARED UNDER THE SUPERVISION OF:

 REGISTERED CIVIL ENGINEER
 DATE: **MAY 17, 2023**

DESIGNED: DMG
 DRAWN: DMG
 CHECKED: DWK
 DATE: 5/2023
 ROAD NUMBER: ---



**COUNTY OF EL DORADO
 COMMUNITY DEVELOPMENT SERVICES
 TRANSPORTATION DEPARTMENT**

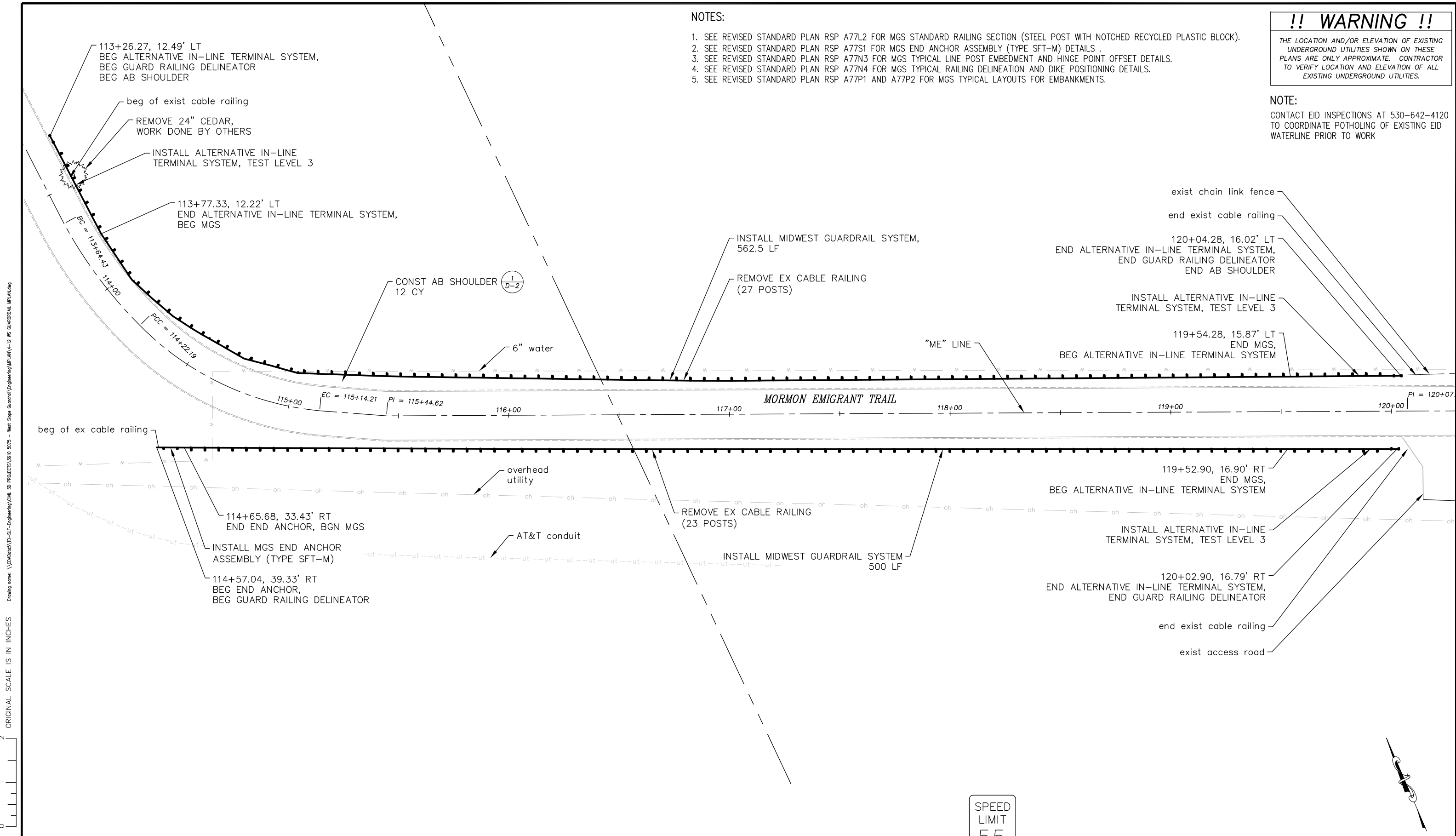
**GUARDRAIL UPGRADES MULTIPLE LOCATIONS -
 WEST SLOPE PROJECT
 SITES 3 & 4**

SHEET
P-3
 5 OF 19
 CONTRACT NO.
7590
 CIP No.
3610 5075

!! WARNING !!
 THE LOCATION AND/OR ELEVATION OF EXISTING UNDERGROUND UTILITIES SHOWN ON THESE PLANS ARE ONLY APPROXIMATE. CONTRACTOR TO VERIFY LOCATION AND ELEVATION OF ALL EXISTING UNDERGROUND UTILITIES.

- NOTES:
1. SEE REVISED STANDARD PLAN RSP A77L2 FOR MGS STANDARD RAILING SECTION (STEEL POST WITH NOTCHED RECYCLED PLASTIC BLOCK).
 2. SEE REVISED STANDARD PLAN RSP A77S1 FOR MGS END ANCHOR ASSEMBLY (TYPE SFT-M) DETAILS .
 3. SEE REVISED STANDARD PLAN RSP A77N3 FOR MGS TYPICAL LINE POST EMBEDMENT AND HINGE POINT OFFSET DETAILS.
 4. SEE REVISED STANDARD PLAN RSP A77N4 FOR MGS TYPICAL RAILING DELINEATION AND DIKE POSITIONING DETAILS.
 5. SEE REVISED STANDARD PLAN RSP A77P1 AND A77P2 FOR MGS TYPICAL LAYOUTS FOR EMBANKMENTS.

NOTE:
 CONTACT EID INSPECTIONS AT 530-642-4120 TO COORDINATE POTHOLING OF EXISTING EID WATERLINE PRIOR TO WORK



Drawing name: \\CD\Users\TD-SJT-Engineering\MP\LAN\12 MS GUARDRAIL MP.LAN.dwg

FOR REDUCED PLANS ORIGINAL SCALE IS IN INCHES

SITES 5 & 6: EMIGRANT TRAIL AT FIRST (WESTERN) DAM

SPEED LIMIT 55

SCALE: 1" = 20'

REVISION	NUMBER	DATE	DESCRIPTION	BY



PREPARED UNDER THE SUPERVISION OF:

 REGISTERED CIVIL ENGINEER
 DATE: MAY 17, 2023

DESIGNED: DMG
 DRAWN: DMG
 CHECKED: DWK
 DATE: 5/2023
 ROAD NUMBER: ---



COUNTY OF EL DORADO
 COMMUNITY DEVELOPMENT SERVICES
 TRANSPORTATION DEPARTMENT

GUARDRAIL UPGRADES MULTIPLE LOCATIONS -
 WEST SLOPE PROJECT
 SITES 5 & 6

SHEET P-4
 6 OF 19
 CONTRACT NO. 7590
 CIP No. 3610 5075

!! WARNING !!

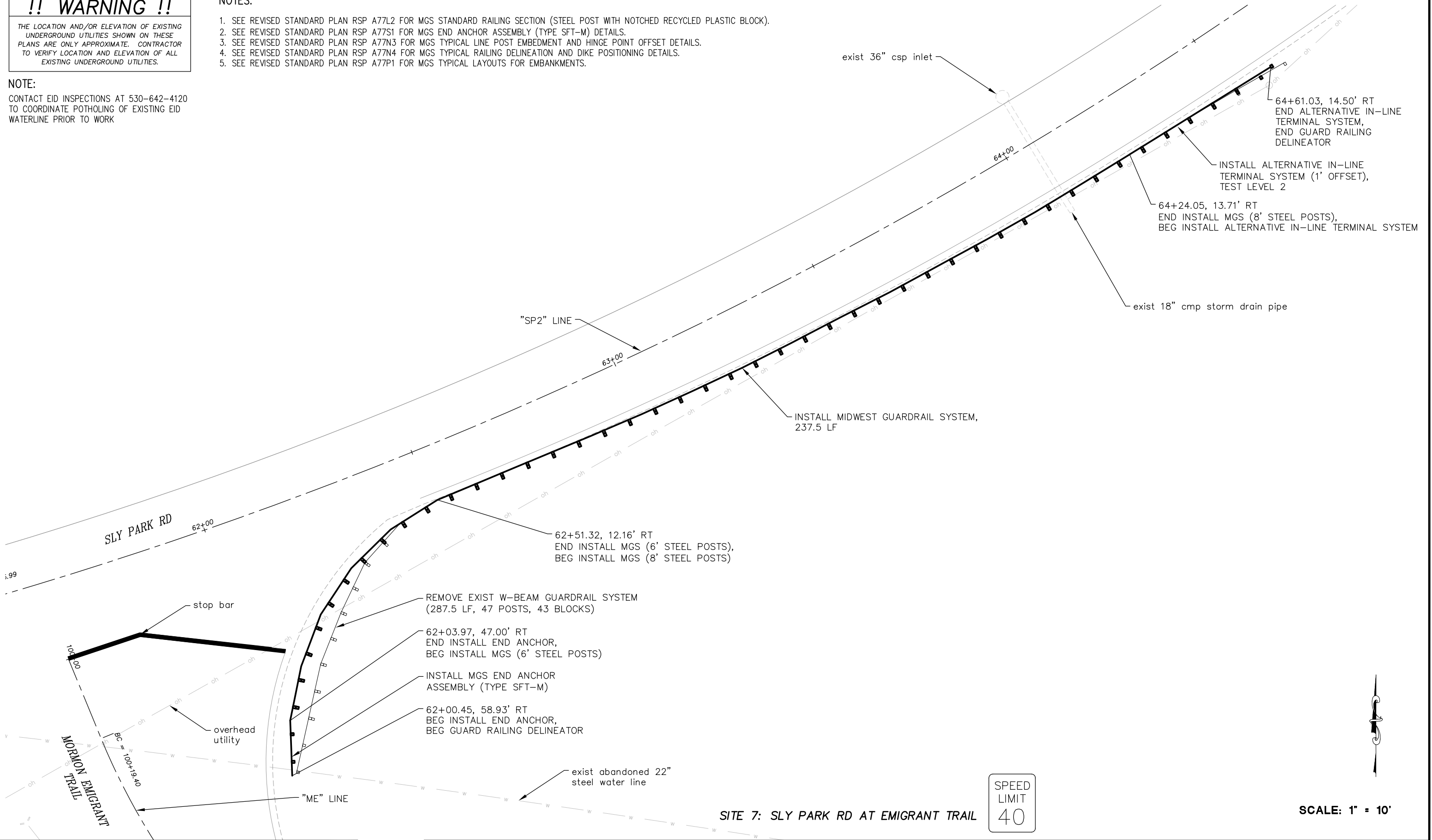
THE LOCATION AND/OR ELEVATION OF EXISTING UNDERGROUND UTILITIES SHOWN ON THESE PLANS ARE ONLY APPROXIMATE. CONTRACTOR TO VERIFY LOCATION AND ELEVATION OF ALL EXISTING UNDERGROUND UTILITIES.

NOTES:

1. SEE REVISED STANDARD PLAN RSP A77L2 FOR MGS STANDARD RAILING SECTION (STEEL POST WITH NOTCHED RECYCLED PLASTIC BLOCK).
2. SEE REVISED STANDARD PLAN RSP A77S1 FOR MGS END ANCHOR ASSEMBLY (TYPE SFT-M) DETAILS.
3. SEE REVISED STANDARD PLAN RSP A77N3 FOR MGS TYPICAL LINE POST EMBEDMENT AND HINGE POINT OFFSET DETAILS.
4. SEE REVISED STANDARD PLAN RSP A77N4 FOR MGS TYPICAL RAILING DELINEATION AND DIKE POSITIONING DETAILS.
5. SEE REVISED STANDARD PLAN RSP A77P1 FOR MGS TYPICAL LAYOUTS FOR EMBANKMENTS.

NOTE:

CONTACT EID INSPECTIONS AT 530-642-4120 TO COORDINATE POTHOLING OF EXISTING EID WATERLINE PRIOR TO WORK



Drawing name: \\CD\Users\JD-SL-Engineering\Civil_3D_PROJECTS\7590-5075 - West Slope Guardrail\Engineering\MPLAN\1-12 MS GUARDRAIL MPLAN.dwg

FOR REDUCED PLANS ORIGINAL SCALE IS IN INCHES

2
1
0



SCALE: 1" = 10'

REVISION	NUMBER	DATE	DESCRIPTION	BY



PREPARED UNDER THE SUPERVISION OF:

 REGISTERED CIVIL ENGINEER
MAY 17, 2023
 DATE:

DESIGNED: DMG
 DRAWN: DMG
 CHECKED: DWK
 DATE: 5/2023
 ROAD NUMBER: ---



COUNTY OF EL DORADO
 COMMUNITY DEVELOPMENT SERVICES
 TRANSPORTATION DEPARTMENT

GUARDRAIL UPGRADES MULTIPLE LOCATIONS -
 WEST SLOPE PROJECT
 SITE 7

SHEET
P-5
 7 OF 19
 CONTRACT NO.
7590
 CIP No.
3610 5075

NOTES:

1. SEE REVISED STANDARD PLAN RSP A77L2 FOR MGS STANDARD RAILING SECTION (STEEL POST WITH NOTCHED RECYCLED PLASTIC BLOCK).
2. SEE REVISED STANDARD PLAN RSP A77S1 FOR MGS END ANCHOR ASSEMBLY (TYPE SFT-M) DETAILS.
3. SEE REVISED STANDARD PLAN RSP A77N3 FOR MGS TYPICAL LINE POST EMBEDMENT AND HINGE POINT OFFSET DETAILS.
4. SEE REVISED STANDARD PLAN RSP A77N4 FOR MGS TYPICAL RAILING DELINEATION AND DIKE POSITIONING DETAILS.
5. SEE REVISED STANDARD PLAN RSP A77P1 AND A77P2 FOR MGS TYPICAL LAYOUTS FOR EMBANKMENTS.

!! WARNING !!

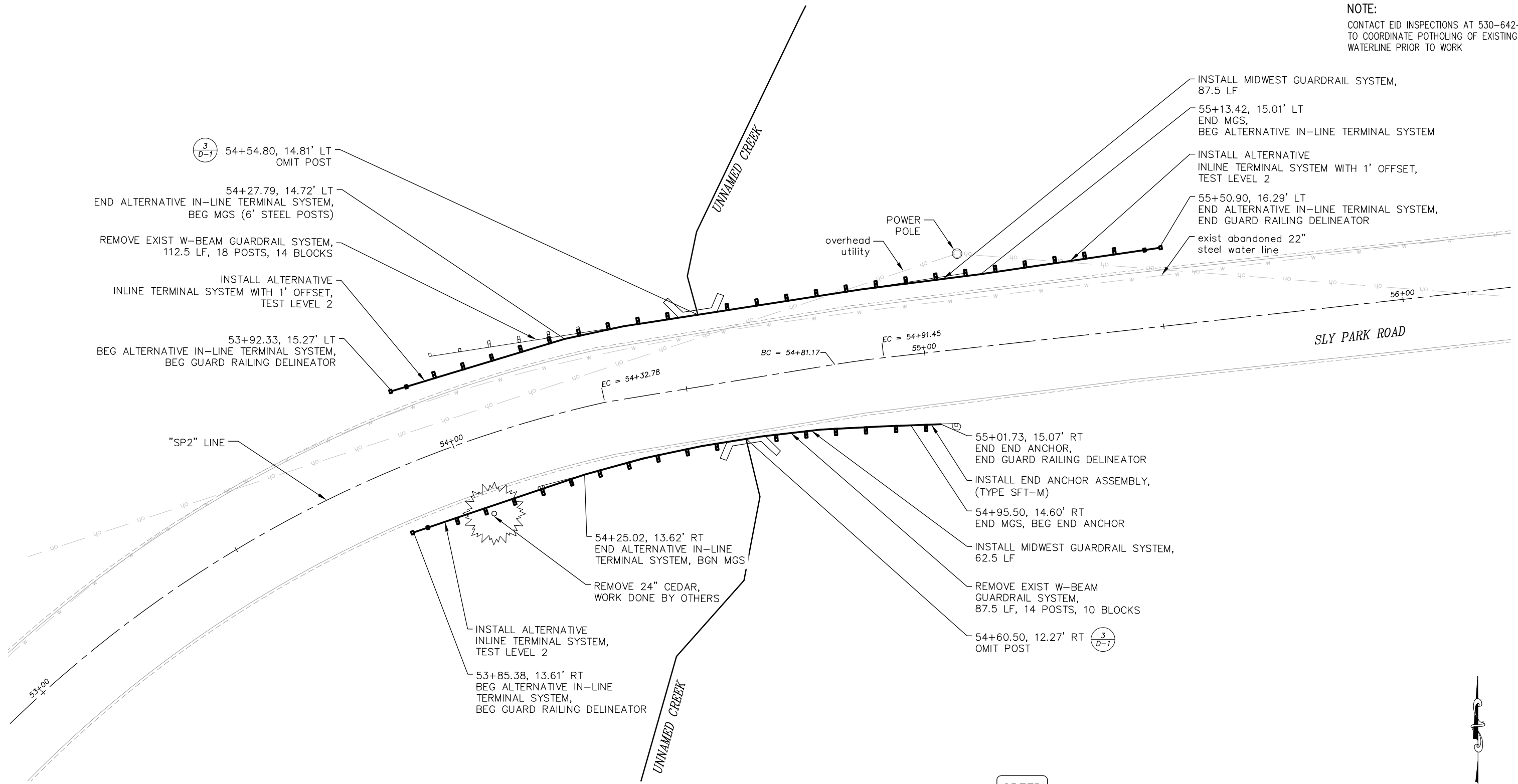
THE LOCATION AND/OR ELEVATION OF EXISTING UNDERGROUND UTILITIES SHOWN ON THESE PLANS ARE ONLY APPROXIMATE. CONTRACTOR TO VERIFY LOCATION AND ELEVATION OF ALL EXISTING UNDERGROUND UTILITIES.

NOTE:

CONTACT EID INSPECTIONS AT 530-642-4120 TO COORDINATE POTHOLING OF EXISTING EID WATERLINE PRIOR TO WORK

Drawing name: \\C:\Users\jtd\OneDrive - West Slope\Guardrail\Engineering\MP\PLAN-12 WS GUARDRAIL MP\PLAN.dwg

FOR REDUCED PLANS ORIGINAL SCALE IS IN INCHES



54+54.80, 14.81' LT OMIT POST

54+27.79, 14.72' LT END ALTERNATIVE IN-LINE TERMINAL SYSTEM, BEG MGS (6' STEEL POSTS)

REMOVE EXIST W-BEAM GUARDRAIL SYSTEM, 112.5 LF, 18 POSTS, 14 BLOCKS

INSTALL ALTERNATIVE IN-LINE TERMINAL SYSTEM WITH 1' OFFSET, TEST LEVEL 2

53+92.33, 15.27' LT BEG ALTERNATIVE IN-LINE TERMINAL SYSTEM, BEG GUARD RAILING DELINEATOR

INSTALL MIDWEST GUARDRAIL SYSTEM, 87.5 LF

55+13.42, 15.01' LT END MGS, BEG ALTERNATIVE IN-LINE TERMINAL SYSTEM

INSTALL ALTERNATIVE IN-LINE TERMINAL SYSTEM WITH 1' OFFSET, TEST LEVEL 2

55+50.90, 16.29' LT END ALTERNATIVE IN-LINE TERMINAL SYSTEM, END GUARD RAILING DELINEATOR

exist abandoned 22" steel water line

55+01.73, 15.07' RT END END ANCHOR, END GUARD RAILING DELINEATOR

INSTALL END ANCHOR ASSEMBLY, (TYPE SFT-M)

54+95.50, 14.60' RT END MGS, BEG END ANCHOR

INSTALL MIDWEST GUARDRAIL SYSTEM, 62.5 LF

REMOVE EXIST W-BEAM GUARDRAIL SYSTEM, 87.5 LF, 14 POSTS, 10 BLOCKS

54+60.50, 12.27' RT OMIT POST

54+25.02, 13.62' RT END ALTERNATIVE IN-LINE TERMINAL SYSTEM, BGN MGS

REMOVE 24" CEDAR, WORK DONE BY OTHERS

INSTALL ALTERNATIVE IN-LINE TERMINAL SYSTEM, TEST LEVEL 2

53+85.38, 13.61' RT BEG ALTERNATIVE IN-LINE TERMINAL SYSTEM, BEG GUARD RAILING DELINEATOR

SITES 8 & 9: SLY PARK ROAD P.M. 6.56

SPEED LIMIT 40

SCALE: 1" = 10'

REVISION	NUMBER	DATE	DESCRIPTION	BY



PREPARED UNDER THE SUPERVISION OF:

[Signature]

REGISTERED CIVIL ENGINEER

MAY 17, 2023

DATE:

DESIGNED: DMG

DRAWN: DMG

CHECKED: DWK

DATE: 5/2023

ROAD NUMBER: ---



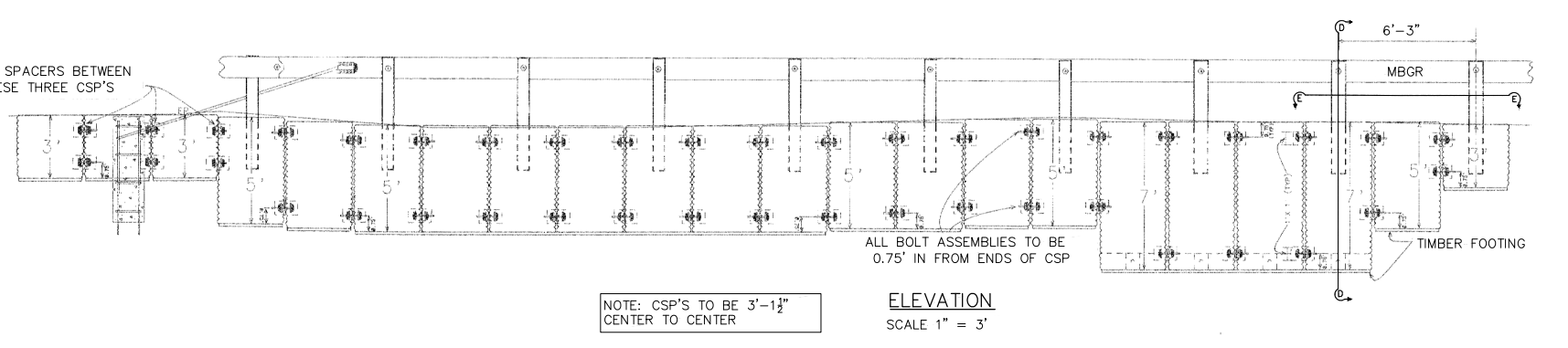
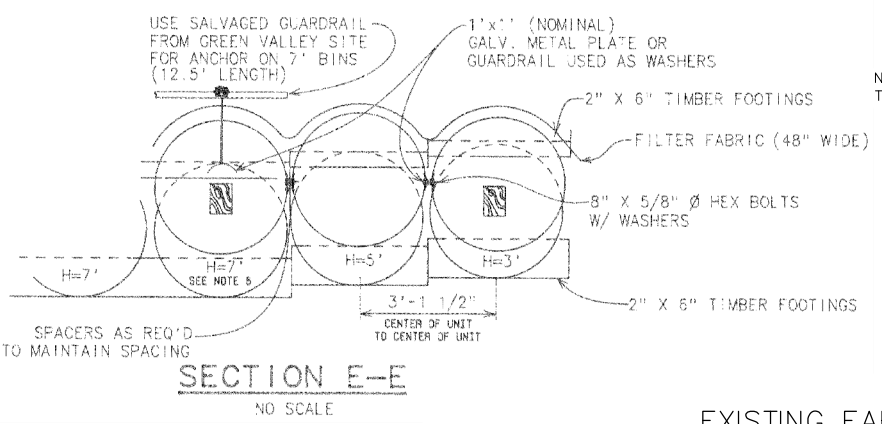
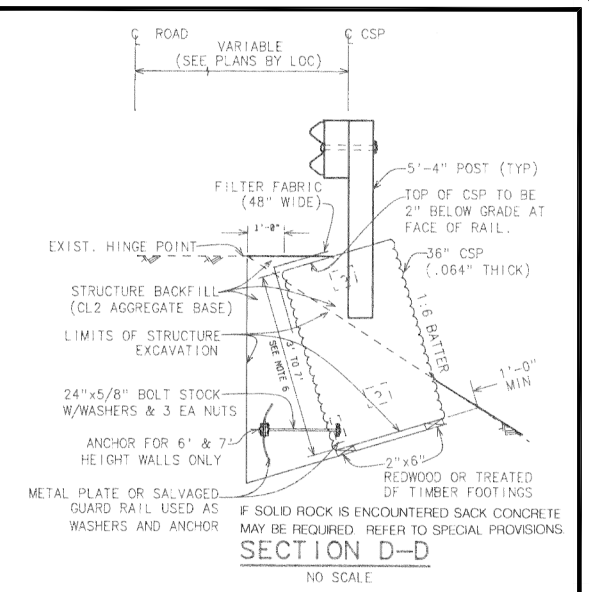
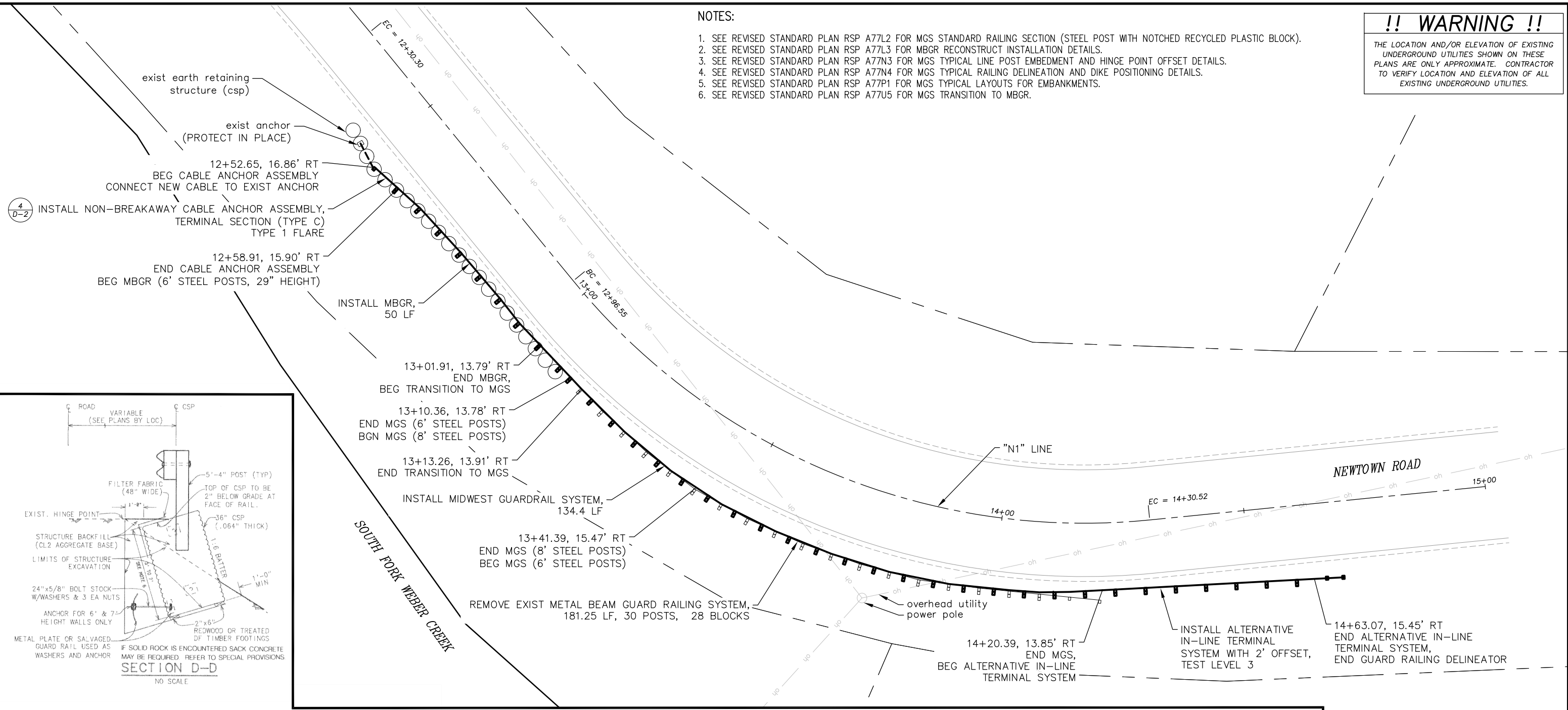
COUNTY OF EL DORADO
COMMUNITY DEVELOPMENT SERVICES
TRANSPORTATION DEPARTMENT

GUARDRAIL UPGRADES MULTIPLE LOCATIONS -
WEST SLOPE PROJECT
SITES 8 & 9

SHEET P-6
8 OF 19
CONTRACT NO. 7590
CIP No. 3610 5075

!! WARNING !!
 THE LOCATION AND/OR ELEVATION OF EXISTING UNDERGROUND UTILITIES SHOWN ON THESE PLANS ARE ONLY APPROXIMATE. CONTRACTOR TO VERIFY LOCATION AND ELEVATION OF ALL EXISTING UNDERGROUND UTILITIES.

- NOTES:**
1. SEE REVISED STANDARD PLAN RSP A77L2 FOR MGS STANDARD RAILING SECTION (STEEL POST WITH NOTCHED RECYCLED PLASTIC BLOCK).
 2. SEE REVISED STANDARD PLAN RSP A77L3 FOR MBGR RECONSTRUCT INSTALLATION DETAILS.
 3. SEE REVISED STANDARD PLAN RSP A77N3 FOR MGS TYPICAL LINE POST EMBEDMENT AND HINGE POINT OFFSET DETAILS.
 4. SEE REVISED STANDARD PLAN RSP A77N4 FOR MGS TYPICAL RAILING DELINEATION AND DIKE POSITIONING DETAILS.
 5. SEE REVISED STANDARD PLAN RSP A77P1 FOR MGS TYPICAL LAYOUTS FOR EMBANKMENTS.
 6. SEE REVISED STANDARD PLAN RSP A77U5 FOR MGS TRANSITION TO MBGR.



SPEED LIMIT
55

SCALE: 1" = 10'

EXISTING EARTH RETAINING STRUCTURE (CSP) AND EXISTING MBGR AS-BUILTS

SITE 10: NEWTOWN ROAD P.M. 2.83

DRAWING NAME: \\CD\Users\TD-SIT-Engineering\Civil_3D_PROJECTS\2019\0575 - West Slope Guardrail\Engineering\MP\PLAN-12 MB GUARDRAIL.MPJ\AN.dwg

REVISION	NUMBER	DATE	DESCRIPTION	BY



PREPARED UNDER THE SUPERVISION OF:

 REGISTERED CIVIL ENGINEER
 DATE: MAY 17, 2023

DESIGNED: DMG
 DRAWN: DMG
 CHECKED: DWK
 DATE: 5/2023
 ROAD NUMBER: ---



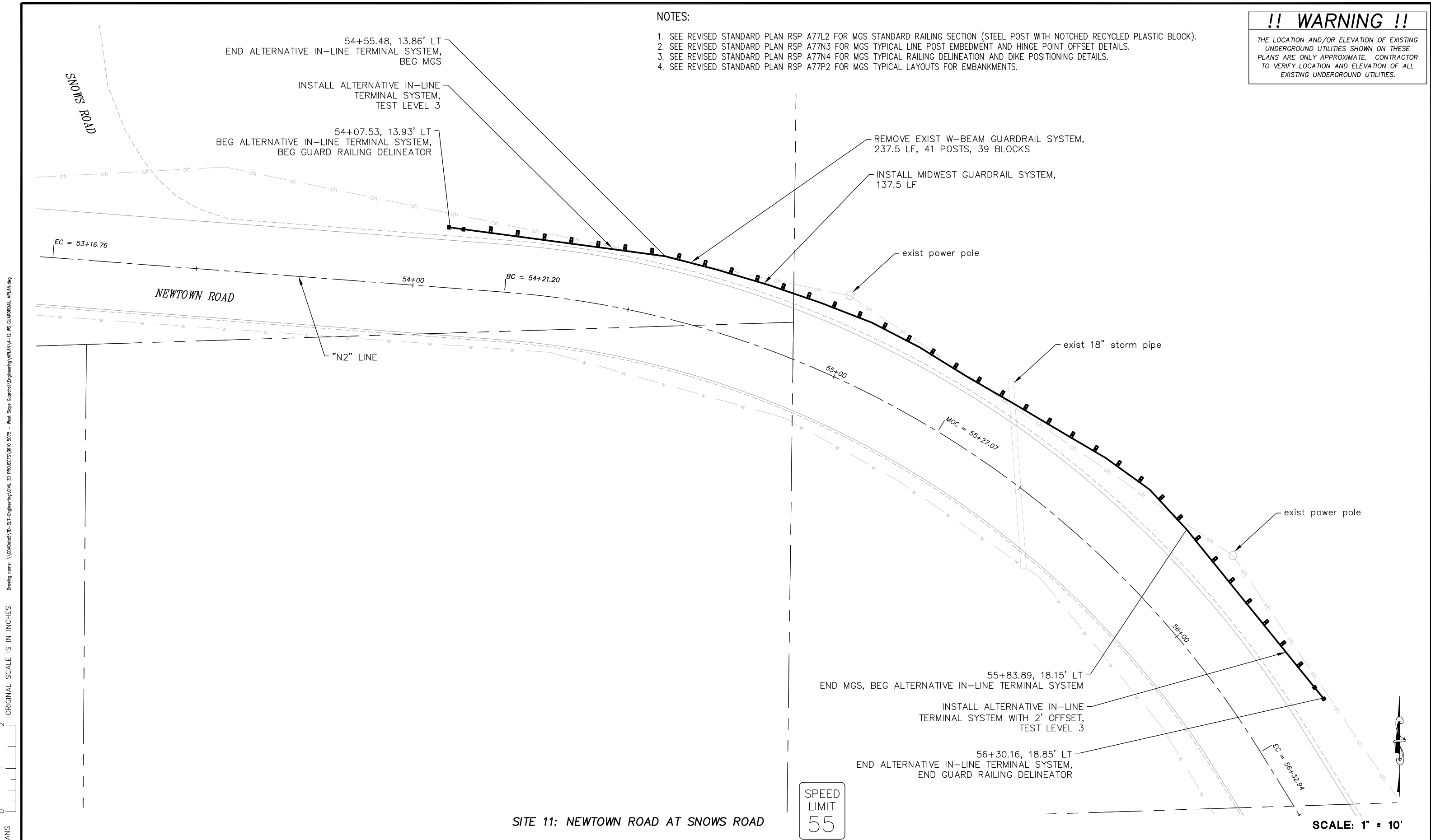
COUNTY OF EL DORADO
 COMMUNITY DEVELOPMENT SERVICES
 TRANSPORTATION DEPARTMENT

GUARDRAIL UPGRADES MULTIPLE LOCATIONS -
 WEST SLOPE PROJECT
 SITE 10

SHEET
P-7
 9 OF 19
 CONTRACT NO.
7590
 CIP No.
3610 5075

!! WARNING !!
 THE LOCATION AND/OR ELEVATION OF EXISTING UNDERGROUND UTILITIES SHOWN ON THESE PLANS ARE ONLY APPROXIMATE. CONTRACTOR TO VERIFY LOCATION AND ELEVATION OF ALL EXISTING UNDERGROUND UTILITIES.

- NOTES:
1. SEE REVISED STANDARD PLAN RSP A77L2 FOR MGS STANDARD RAILING SECTION (STEEL POST WITH NOTCHED RECYCLED PLASTIC BLOCK).
 2. SEE REVISED STANDARD PLAN RSP A77N3 FOR MGS TYPICAL LINE POST EMBEDMENT AND HINGE POINT OFFSET DETAILS.
 3. SEE REVISED STANDARD PLAN RSP A77N4 FOR MGS TYPICAL RAILING DELINEATION AND DIKE POSITIONING DETAILS.
 4. SEE REVISED STANDARD PLAN RSP A77P2 FOR MGS TYPICAL LAYOUTS FOR EMBANKMENTS.



Drawing name: \\CD\Users\TD-SIT-Engineering\MP\LAN-12 WS GUARDRAIL MP\LAN.dwg
 ORIGINAL SCALE IS IN INCHES
 FOR REDUCED PLANS
 REVISION

SITE 11: NEWTOWN ROAD AT SNOWS ROAD

SPEED LIMIT
55

SCALE: 1" = 10'

NUMBER	DATE	DESCRIPTION	BY



PREPARED UNDER THE SUPERVISION OF:

 REGISTERED CIVIL ENGINEER
MAY 17, 2023
 DATE:

DESIGNED: DMG
 DRAWN: DMG
 CHECKED: DWK
 DATE: 5/2023
 ROAD NUMBER: ---



**COUNTY OF EL DORADO
 COMMUNITY DEVELOPMENT SERVICES
 TRANSPORTATION DEPARTMENT**

**GUARDRAIL UPGRADES MULTIPLE LOCATIONS -
 WEST SLOPE PROJECT
 SITE 11**

SHEET
P-8
 10 OF 19
 CONTRACT NO.
7590
 CIP No.
3610 5075

NOTES:

1. SEE REVISED STANDARD PLAN RSP A77L2 FOR MGS STANDARD RAILING SECTION (STEEL POST WITH NOTCHED RECYCLED PLASTIC BLOCK).
2. SEE REVISED STANDARD PLAN RSP A77S1 FOR MGS END ANCHOR ASSEMBLY (TYPE SFT-M) DETAILS.
3. SEE REVISED STANDARD PLAN RSP A77N3 FOR MGS TYPICAL LINE POST EMBEDMENT AND HINGE POINT OFFSET DETAILS.
4. SEE REVISED STANDARD PLAN RSP A77N4 FOR MGS TYPICAL RAILING DELINEATION AND DIKE POSITIONING DETAILS.
5. SEE REVISED STANDARD PLAN RSP A77P1 FOR MGS TYPICAL LAYOUTS FOR EMBANKMENTS.

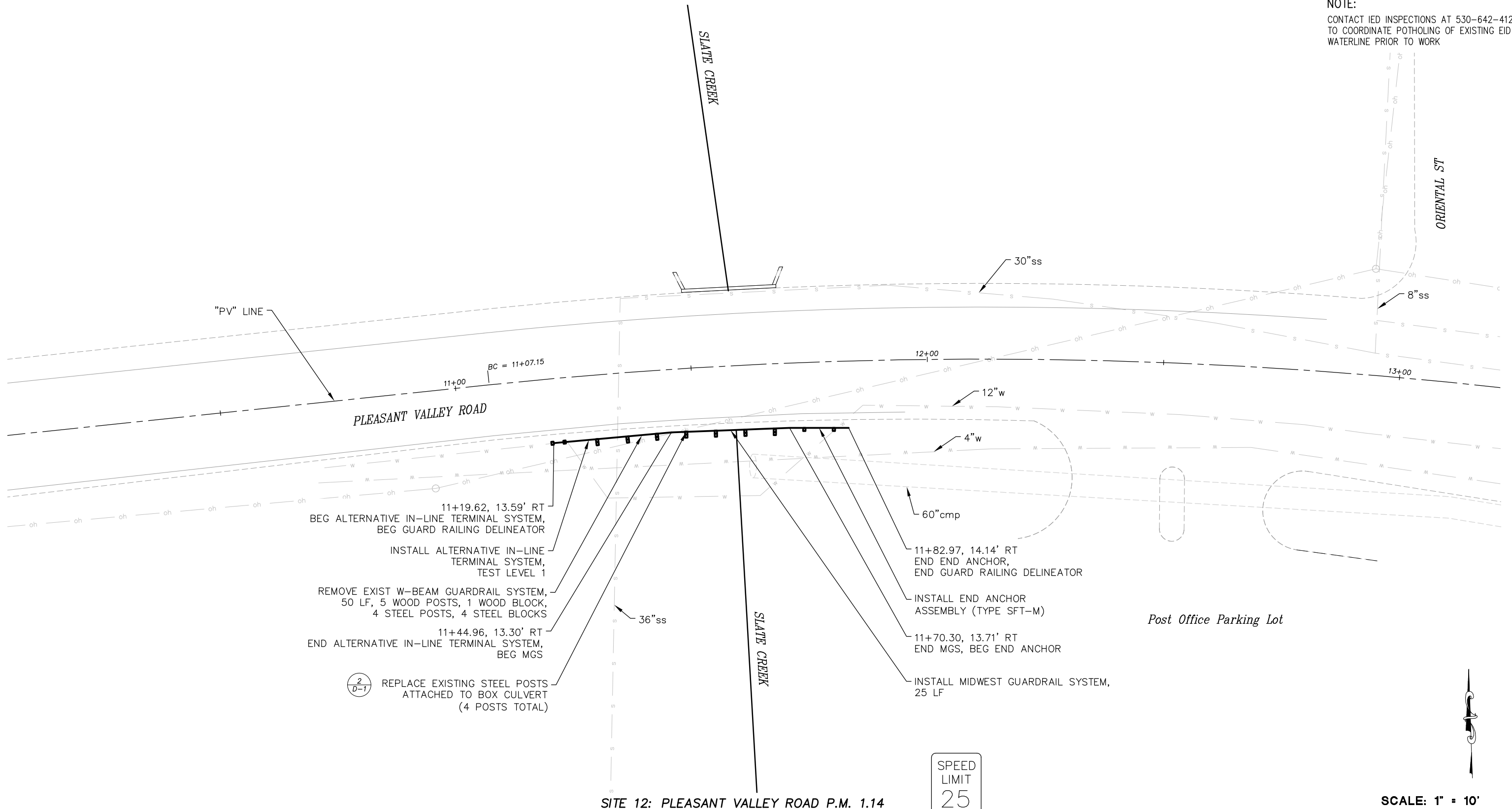
!! WARNING !!

THE LOCATION AND/OR ELEVATION OF EXISTING UNDERGROUND UTILITIES SHOWN ON THESE PLANS ARE ONLY APPROXIMATE. CONTRACTOR TO VERIFY LOCATION AND ELEVATION OF ALL EXISTING UNDERGROUND UTILITIES.

NOTE:

CONTACT IED INSPECTIONS AT 530-642-4120 TO COORDINATE POTHOLING OF EXISTING EID WATERLINE PRIOR TO WORK

Drawing name: \\CD\Users\TD-SIT-Engineering\Civil_3D_PROJECTS\5075 - West Slope Guardrail\Engineering\PLAN\1-12 WS GUARDRAIL PLAN.dwg



FOR REDUCED PLANS ORIGINAL SCALE IS IN INCHES

REVISION	NUMBER	DATE	DESCRIPTION	BY



PREPARED UNDER THE SUPERVISION OF:

 REGISTERED CIVIL ENGINEER
MAY 17, 2023
 DATE:

DESIGNED: DMG
 DRAWN: DMG
 CHECKED: DWK
 DATE: 5/2023
 ROAD NUMBER: ---



COUNTY OF EL DORADO
COMMUNITY DEVELOPMENT SERVICES
TRANSPORTATION DEPARTMENT

GUARDRAIL UPGRADES MULTIPLE LOCATIONS -
WEST SLOPE PROJECT
SITE 12

SHEET
P-9
 11 of 19
 CONTRACT NO.
7590
 CIP No.
3610 5075

Drawing name: \\CD\Users\TD-SJT-Engineering\Civil_3D_PROJECTS\3610_5075 - West Slope Guardrail\Engineering\MP\PLAN-12 MB GUARDRAIL.MXD

FOR REDUCED PLANS ORIGINAL SCALE IS IN INCHES

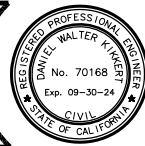
0 1 2

MIDWEST GUARDRAIL SYSTEM QUANTITIES

NO.	DIRECTION	PLAN SHEET NO.	ROAD	STATION	REMOVE AC DIKE	PLACE AC DIKE (TYPE C)	SALVAGE GUARDRAIL	TREATED WOOD WASTE	MIDWEST GUARDRAIL SYSTEM (6' STEEL POSTS)	MIDWEST GUARDRAIL SYSTEM (8' STEEL POSTS)	ALTERNATIVE IN-LINE TERMINAL SYSTEM TEST LEVEL 1	ALTERNATIVE IN-LINE TERMINAL SYSTEM TEST LEVEL 2	ALTERNATIVE IN-LINE TERMINAL SYSTEM TEST LEVEL 3	END ANCHOR ASSEMBLY (TYPE SFT-M)	BURIED POST END ANCHOR	NON-BREAKAWAY CABLE ANCHOR ASSEMBLY ³	GUARD RAILING DELINEATOR ¹	AB SHOULDER
					LF	LF	LF	LB	LF	LF	EA	EA	EA	EA	EA	EA	EA	EA
1	SB	P-1	SLY PARK RD	11+42 TO 18+04	25.00	25.00	625.00	9292	550.00	50.00		1		1			26	
2	SB	P-2	SLY PARK RD	24+42 TO 28+64			400.00	5980	350.00			1		1			16	
3	WB	P-3	MORMON EMIGRANT TRAIL	140+09 TO 147+79			243.75	6256	712.50					2			30	11
3	WB	P-3	MORMON EMIGRANT TRAIL	147+31 TO 147+79			50.00	644	25.00					1	1		3	
4	EB	P-3	MORMON EMIGRANT TRAIL	138+86 TO 147+59			300.00	7452	800.00				1	1			35	
5	WB	P-4	MORMON EMIGRANT TRAIL	113+26 TO 120+04				2484	562.50				2				27	12
6	EB	P-4	MORMON EMIGRANT TRAIL	114+57 TO 120+02				2116	500.00				1	1			23	
7	NB	P-5	SY PARK RD	62+00 TO 64+60			287.50	4324	62.50	175.00		1		1			12	
8	SB	P-6	SLY PARK RD	53+92 TO 55+50			112.50	1656	87.50			2					7	
9	NB	P-6	SLY PARK RD	53+85 TO 54+60			87.50	1288	62.50			1		1			6	
10	EB	P-7	NEWTOWN RD ^{1,3}	12+52 TO 14+62			181.25	2760	146.85	37.50			1			1	9	
11	WB	P-8	NEWTOWN RD	54+07 TO 56+29			237.50	3772	137.50				2				10	
12	EB	P-9	PLEASANT VALLEY RD	11+18 TO 11+89			50.00	460	25.00		1			1			3	
SHEET TOTAL					25.00	25.00	2575.00	48484	4021.85	262.50	1	6	7	10	1	1	207	23

1. PLACE GUARD RAILING DELINEATOR AT EVERY 25'
2. MBGR INCLUDED IN MIDWEST GUARDRAIL SYSTEM (6' STEEL POST) QUANTITY AT SITE 10
3. NON-BREAKAWAY CABLE ANCHOR ASSEMBLY INCLUDED IN MBGR QUANTITY

REVISION	NUMBER	DATE	DESCRIPTION	BY



PREPARED UNDER THE SUPERVISION OF:

 REGISTERED CIVIL ENGINEER
MAY 17, 2023
 DATE:

DESIGNED: DMG
 DRAWN: DMG
 CHECKED: DWK
 DATE: 5/2023
 ROAD NUMBER: ---



COUNTY OF EL DORADO
 COMMUNITY DEVELOPMENT SERVICES
 TRANSPORTATION DEPARTMENT

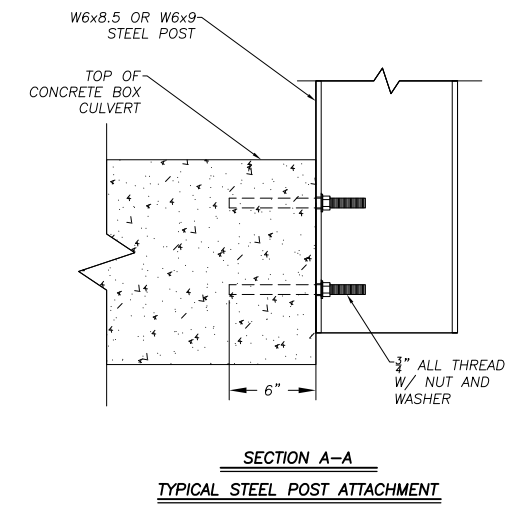
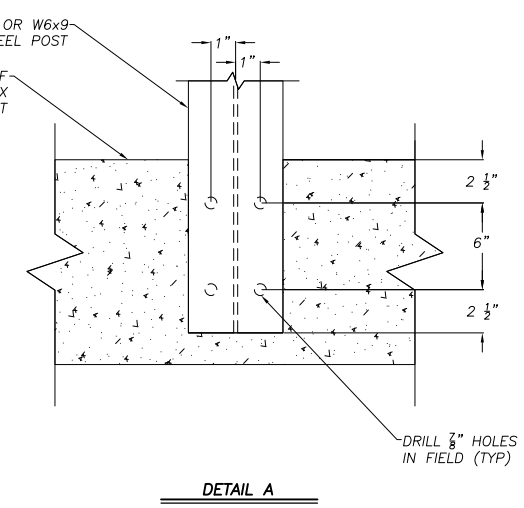
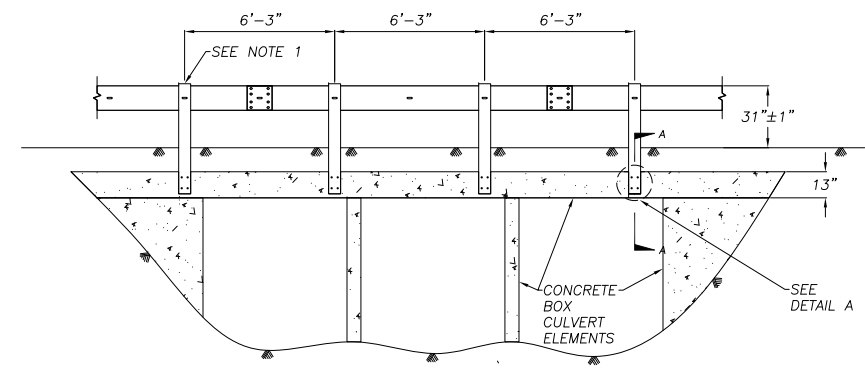
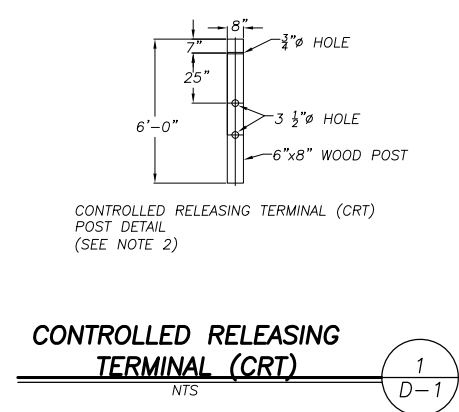
GUARDRAIL UPGRADES MULTIPLE LOCATIONS -
 WEST SLOPE PROJECT
 QUANTITIES

SHEET
Q-1
 12 OF 19
 CONTRACT NO.
7590
 CIP No.
3610 5075

Drawing name: \\CD\bas\as\T-SLT-Engineering\CIVIL 3D PROJECTS\5610 5075 - West Slope Guardrail\Engineering\WPL\AN12-14_GUARDRAIL D-1 THRU D-2.dwg

FOR REDUCED PLANS ORIGINAL SCALE IS IN INCHES

- NOTES:**
1. DRILL HOLES IN STEEL POSTS AND CONCRETE BOX CULVERT IN THE FIELD.
 2. CUT STEEL POSTS TO LENGTH IN FIELD TO ENSURE PROPER HEIGHT ESTABLISHED.
 3. EPOXY ALL THREAD INTO CONCRETE.
 4. IF USING EXISTING EMBEDDED ALL THREAD, DRILL HOLES IN STEEL POSTS AND CONCRETE TO MATCH EXISTING LAYOUT.

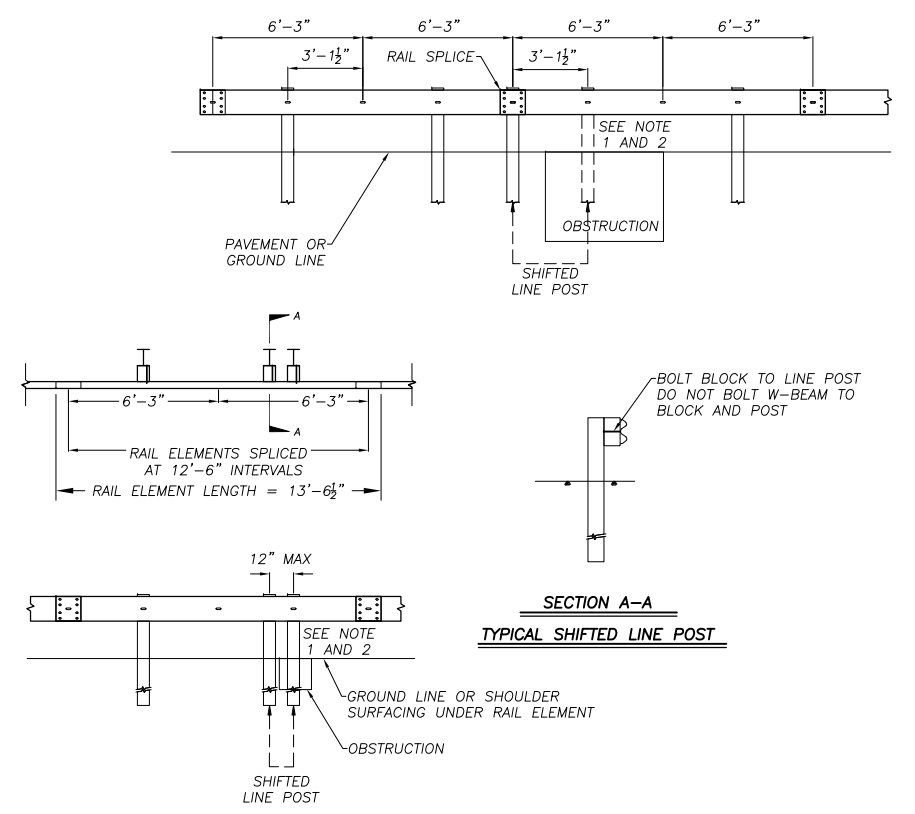
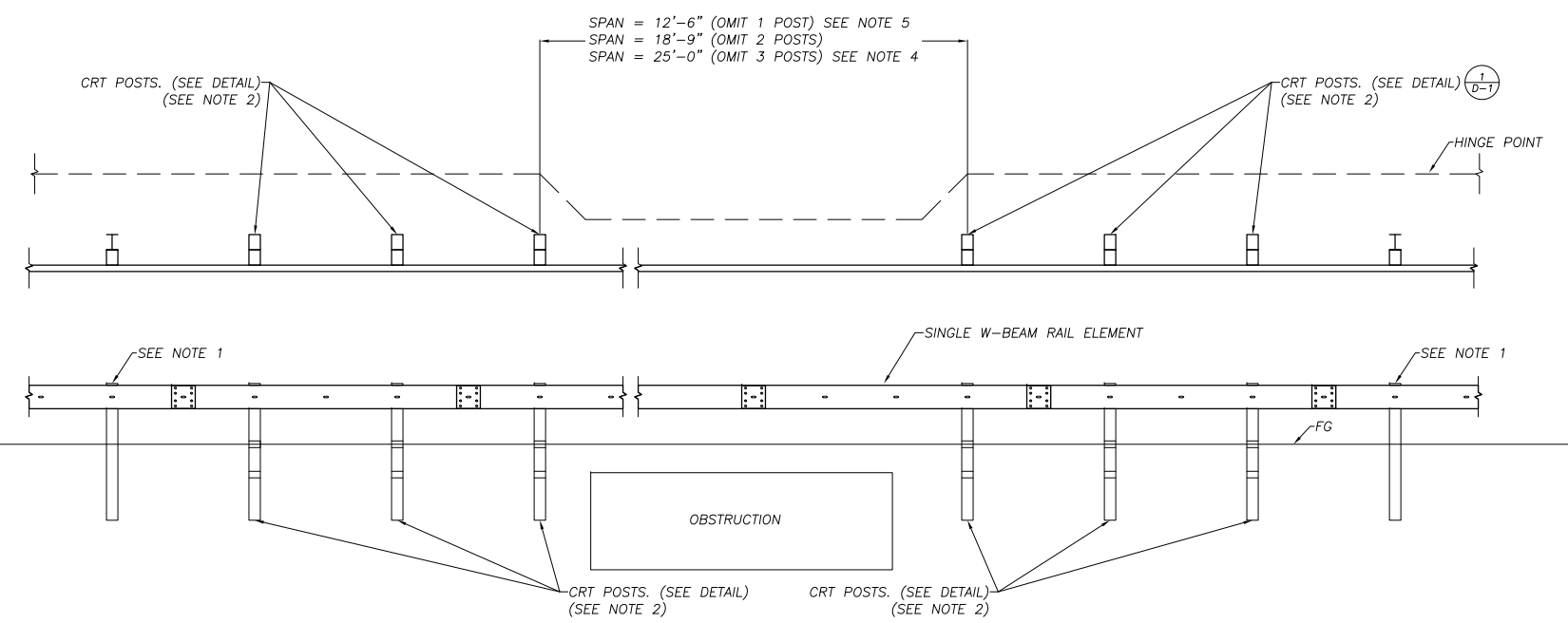


CONTROLLED RELEASING TERMINAL (CRT)
NTS (1) D-1

STEEL POST ATTACHMENT TO CONCRETE BOX CULVERT
NTS (2) D-1

- NOTES:**
1. STANDARD 6' POST SHOULD BE STEEL, SEE STD PLAN A77L1AND A77L2 FOR ADDITIONAL DETAILS NOT SHOWN
 2. CRT POST MUST BE WOOD.
 3. SPLICE LOCATION OF MGS WILL NOT EFFECT SPAN.
 4. GUARDRAIL ELEMENTS TO BE STANDARD 12'-6" LENGTH BETWEEN SPLICES UNLESS THREE POSTS ARE REMOVED, THEN USE A 25' ELEMENT TO SPAN THE REMOVED POSTS.
 5. A SINGLE POST OF MGS SYSTEM MAY BE REMOVED WITH NO CRT POST REQUIRED. A MIN. LENGTH OF 25' OF STANDARD GUARDRAIL IS REQUIRED BEFORE ANOTHER POST(S) CAN BE REMOVED, A TERMINAL CAN BE PLACED, OR ANY SPECIAL GUARDRAIL FEATURE IS USED.
 6. WHEN MORE THAN ONE POST IS REMOVED, THIS DETAIL USES A TYPICAL LENGTH OF 50' OF STANDARD GUARDRAIL. IF OTHERWISE SHOWN OR AUTHORIZED, A MIN. LENGTH OF 25' OF STANDARD GUARDRAIL SHOULD BE PLACED BEFORE ANOTHER POST CAN BE REMOVED, A TERMINAL CAN BE PLACED, ANY END ANCHOR OR OVERSIZED POST OR TRANSITION OR STRENGTHENED RAIL SECTION OR STIFFENING OR WEAKENING OF GUARDRAIL IS USED.

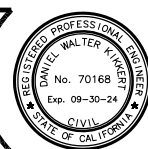
- NOTES:**
1. THIS DETAIL DOES NOT APPLY TO END TERMINALS
 2. THIS DETAIL MAY BE USED WITH THRIE BEAM LINE POST



OMIT POST DETAIL FOR MIDWEST GUARDRAIL SYSTEM
NTS (3) D-1

SHIFT POST DETAIL FOR MIDWEST GUARDRAIL SYSTEM
NTS (4) D-1

REVISION	NUMBER	DATE	DESCRIPTION	BY



PREPARED UNDER THE SUPERVISION OF:
[Signature]
REGISTERED CIVIL ENGINEER
MAY 17, 2023
DATE:

DESIGNED: DMG
DRAWN: DMG
CHECKED: DWK
DATE: 5/2023
ROAD NUMBER: ---

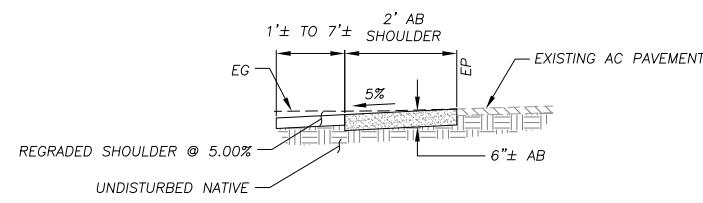


COUNTY OF EL DORADO
DEPARTMENT OF TRANSPORTATION

GUARDRAIL UPGRADES MULTIPLE LOCATIONS -
WEST SLOPE PROJECT
DETAILS

SHEET
D-1
13 OF 19
CONTRACT NO.
7590
CIP No.
3610 5075

Drawing name: \C:\Data\517-SLT-Engineering\CIVIL 3D PROJECTS\5610 5075 - West Slope Guardrail\Engineering\WPL\AN12-14_GUARDRAIL D-1 THRU D-2.dwg
 ORIGINAL SCALE IS IN INCHES
 FOR REDUCED PLANS

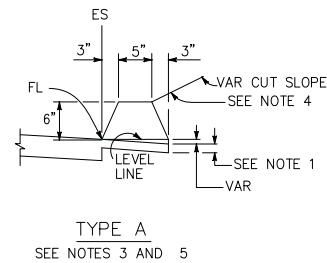


- NOTES:
- SEE SPECIAL PROVISIONS FOR SUBGRADE REQUIREMENTS.
 - FOR LOCATIONS WHERE AB SHOULDER IS CONSTRUCTED ADJACENT TO EXISTING AC, THE THICKNESS AND WIDTH WILL CONFORM TO THE SHOULDER DIMENSIONS SHOWN AT A SLOPE OF 5%. ANY GRADING BEYOND THE SHOULDER WILL BE IN ACCORDANCE WITH THE PLANS AND DETAILS FOR THE FACILITIES PROPOSED.

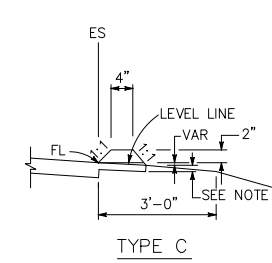
AB SHOULDER

NTS

1
D-2



TYPE A
SEE NOTES 3 AND 5



TYPE C

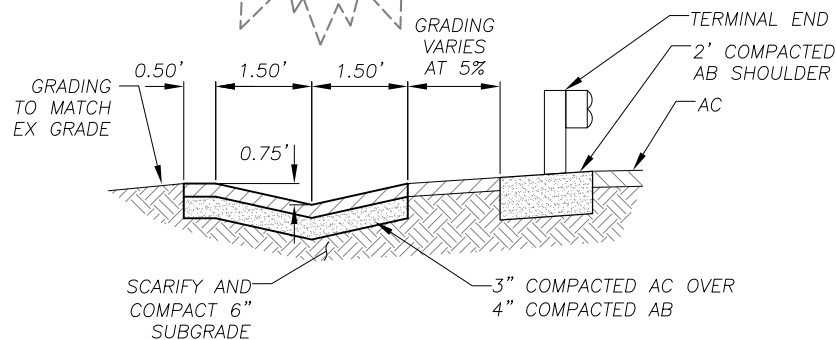
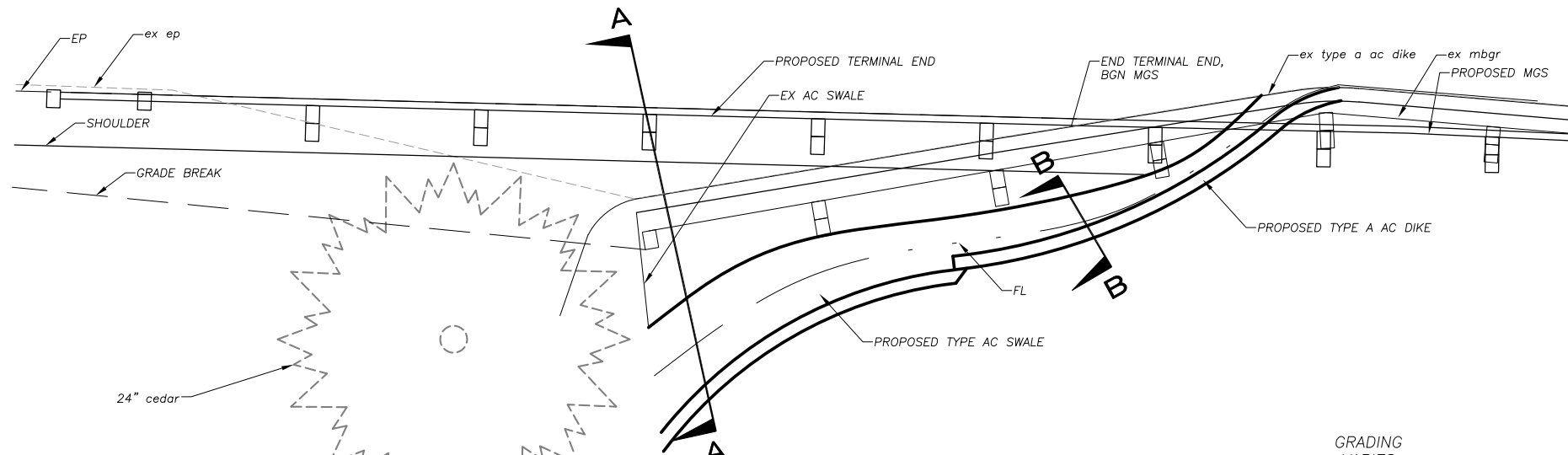
DIKES

- NOTES:
- FOR HMA SHOULDERS ONLY, EXTEND TOP LAYER OF HMA PLACED ON THE SHOULDER UNDER DIKE WITH NO JOINT AT THE ES. FOR PROJECTS WITH OGFC SHOULDERS, DO NOT EXTEND OGFC UNDER DIKE. SEE PROJECT PLANS FOR MODIFIED DIKE DETAIL.
 - TYPE A DIKE ONLY TO BE USED WHERE RESTRICTIVE SLOPE CONDITIONS DO NOT PROVIDE ENOUGH WIDTH TO USE TYPE D OR TYPE E DIKE.
 - FILL AND COMPACT WITH EXCAVATED MATERIAL TO TOP OF DIKE.
 - USE TYPE A DIKE, WHERE DIKE IS REQUIRED WITH GUARDRAIL INSTALLATIONS. SEE STANDARD PLAN A77N4 FOR DIKE POSITIONING DETAILS. SEE STANDARD PLAN A77N3 FOR HINGE POINT OFFSETS WITH GUARDRAIL.
 - USE TYPE A OR F DIKE, WHERE DIKE IS REQUIRED WITH GUARDRAIL INSTALLATIONS. SEE STANDARD PLAN A77N4 FOR DIKE POSITIONING DETAILS. SEE STANDARD PLAN A77N3 FOR HINGE POINT OFFSETS WITH GUARDRAIL.

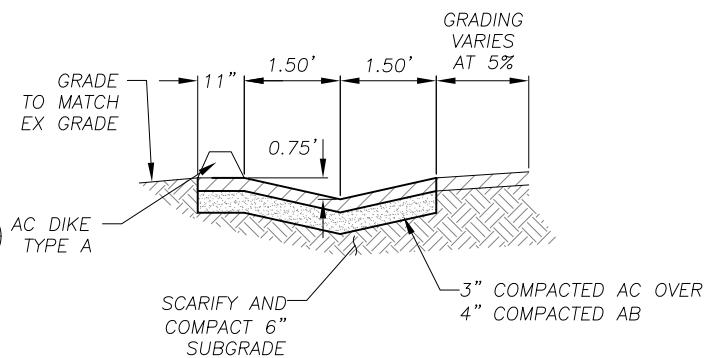
AC DIKES

NTS

2
D-2



SECTION A-A

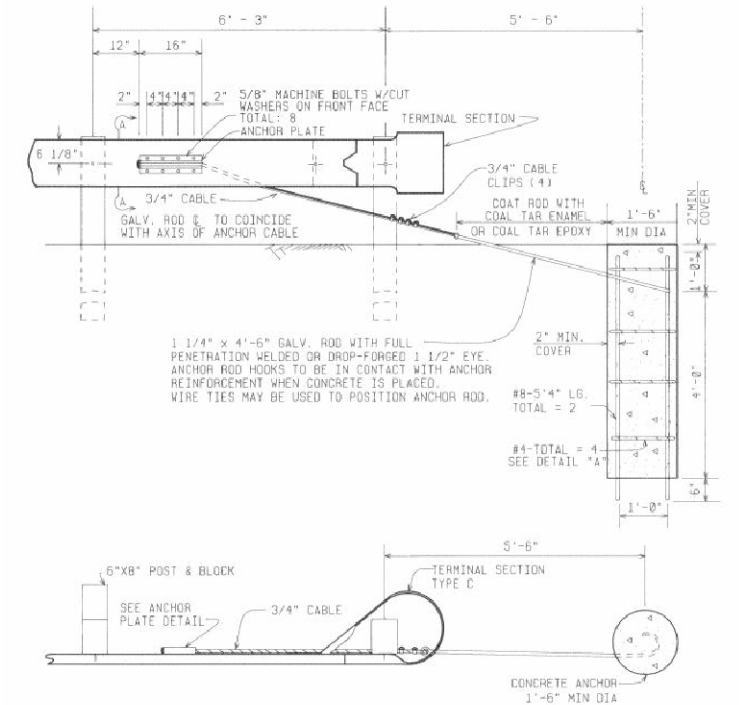


SECTION B-B

AC DIKE TO SWALE

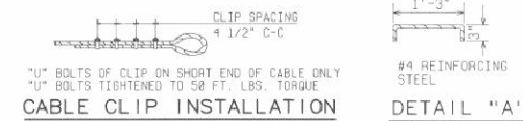
NTS

3
D-2



NON-BREAKAWAY

CABLE ANCHOR ASSEMBLY



CABLE CLIP INSTALLATION

DETAIL "A"

CABLE ANCHOR ASSEMBLY

NTS

4
D-2

REVISION	NUMBER	DATE	DESCRIPTION	BY



PREPARED UNDER THE SUPERVISION OF:

 REGISTERED CIVIL ENGINEER
MAY 17, 2023
 DATE:

DESIGNED: DMG
 DRAWN: DMG
 CHECKED: DWK
 DATE: 5/2023
 ROAD NUMBER: ---



COUNTY OF EL DORADO
DEPARTMENT OF TRANSPORTATION

GUARDRAIL UPGRADES MULTIPLE LOCATIONS -
WEST SLOPE PROJECT
DETAILS

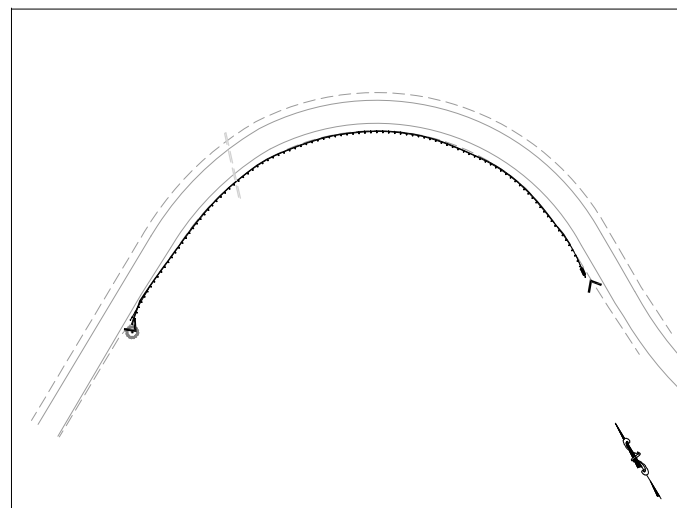
SHEET
D-2
 14 OF 19
 CONTRACT NO.
7590
 CIP No.
3610 5075

LEGEND

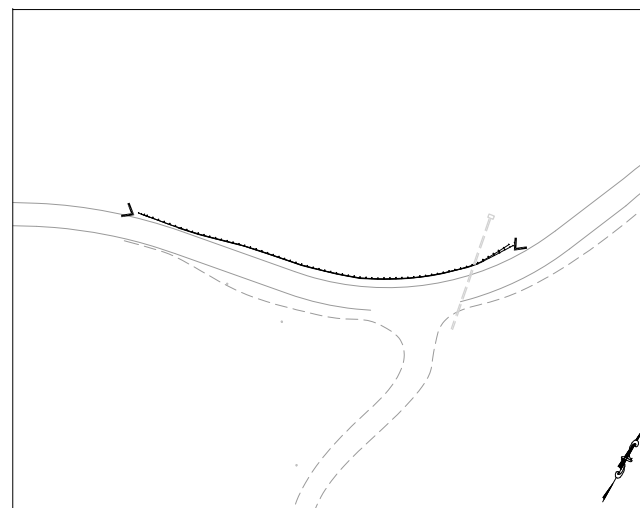
	COUNTY OR CALTRANS RIGHTS-OF-WAY OR PROPERTY LINE
	EXISTING EDGE OF PAVEMENT
	LAND CAPABILITY BOUNDARY
	10' SEZ SETBACK (IF APPLICABLE)
	PROPOSED STAGING, STORAGE, OR CONC WASH
	WOODEN TREE TRUNK PROTECTION
	ESA — ESA — TEMPORARY FENCE (TYPE HIGH VISIBILITY)
	RSF — RSF — REINFORCED SILT FENCE
	SEDIMENT CONTROL

NOTES:

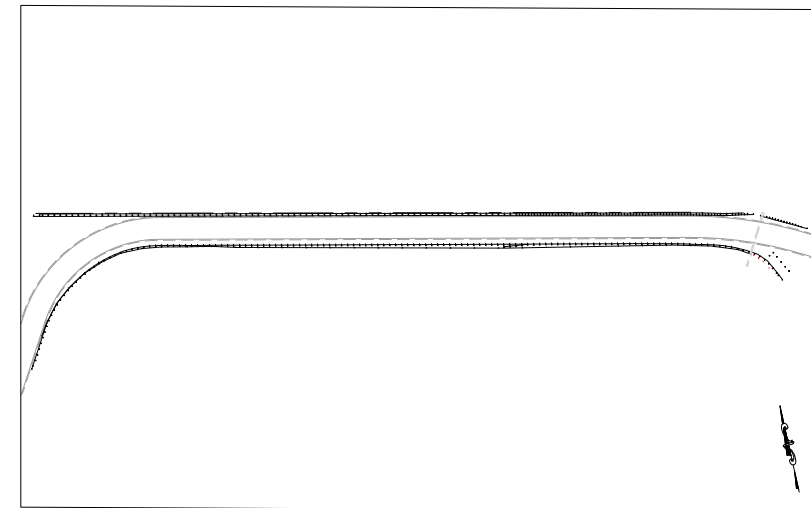
1. THIS PLAN HAS BEEN PREPARED AS A GUIDE FOR YOU IN PREPARATION OF A COMPLETE EROSION CONTROL PLAN AND TO AID IN YOUR PLANNING FOR STAGING/STORAGE OF MATERIALS AND EQUIPMENT. YOUR EROSION CONTROL PLAN WILL INCLUDE DETAILED CONTROLS INCLUDING DRAINAGE INLET PROTECTION, CURB AND GUTTER FLOWLINE PROTECTION.
2. YOUR EROSION CONTROL PLAN WILL ADDRESS CONSTRUCTION ACTIVITIES THAT INCLUDE GROUND DISTURBANCE AND TRACKING OF SOILS, AND WILL CONFORM TO THE SPECIAL PROVISIONS. YOUR WATER POLLUTION CONTROL PROGRAM WILL ALSO INCLUDE A SPILL CONTINGENCY PLAN WITH APPROPRIATE CONTACT INFORMATION.
3. ALL MATERIAL PILES WILL BE COVERED AND SECURED AT THE END OF EACH WORK DAY.
4. YOU WILL NOT EXCAVATE MORE THAN CAN BE INSTALLED AND BACKFILLED IN ONE WORKING DAY.
5. YOUR ATTENTION IS DIRECTED TO THE SPECIAL PROVISIONS REGARDING TEMPORARY EROSION CONTROL REQUIREMENTS FOR STAGING AREAS.
6. STAGING AREAS SHOWN ARE FOR THE TEMPORARY STORAGE OF CONSTRUCTION MATERIALS AND EQUIPMENT WHICH ARE TO BE USED ON THIS PROJECT.



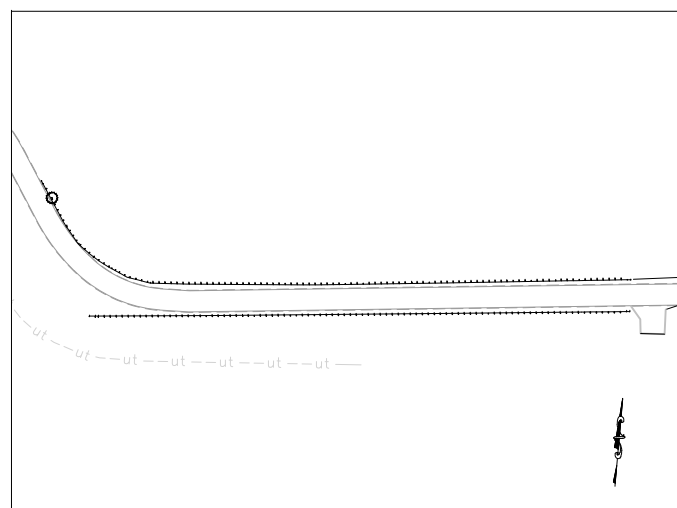
SITE 1: SLY PARK ROAD PM 9.86



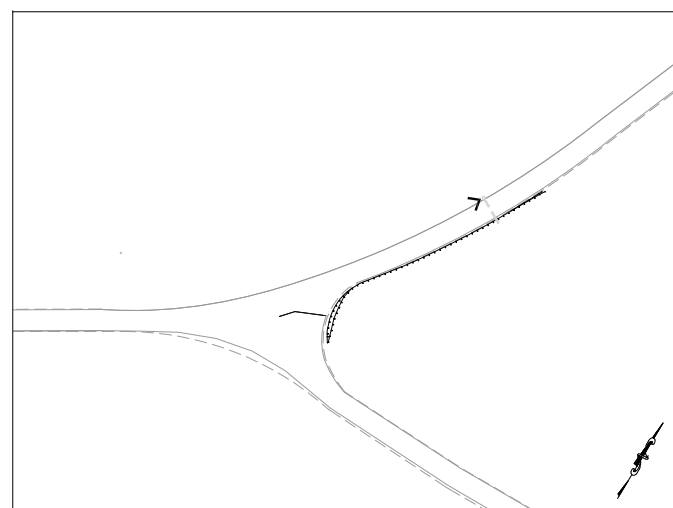
SITE 2: SLY PARK ROAD PM 9.66



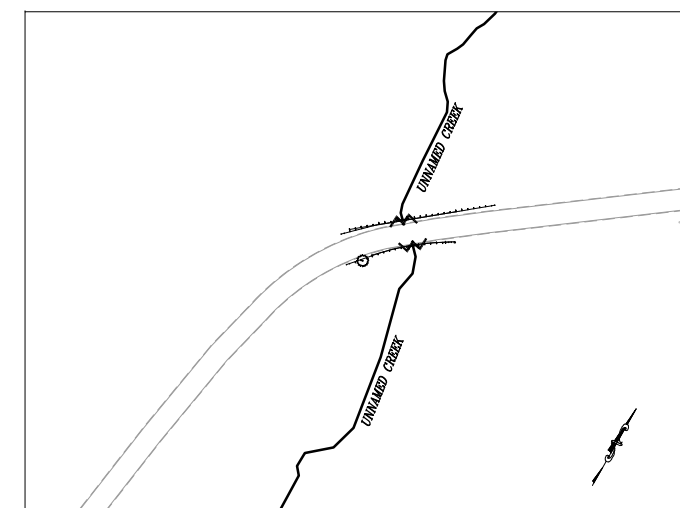
SITES 5&6: MORMON EMIGRANT TRAIL AT 2ND DAM



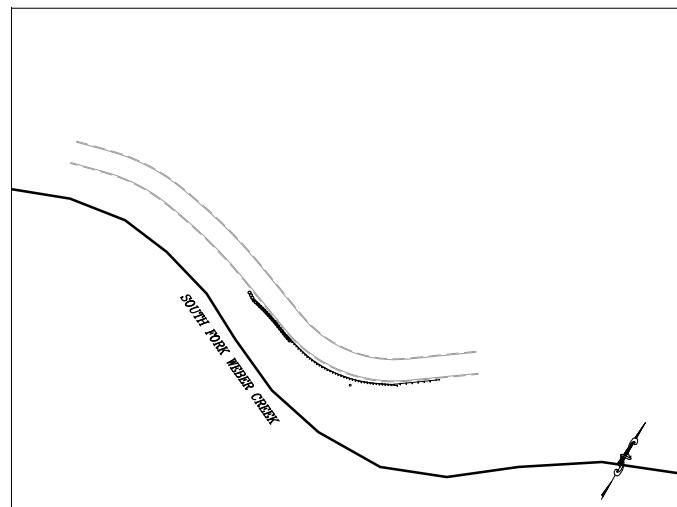
SITES 3&4: MORMON EMIGRANT TRAIL AT 1ST DAM



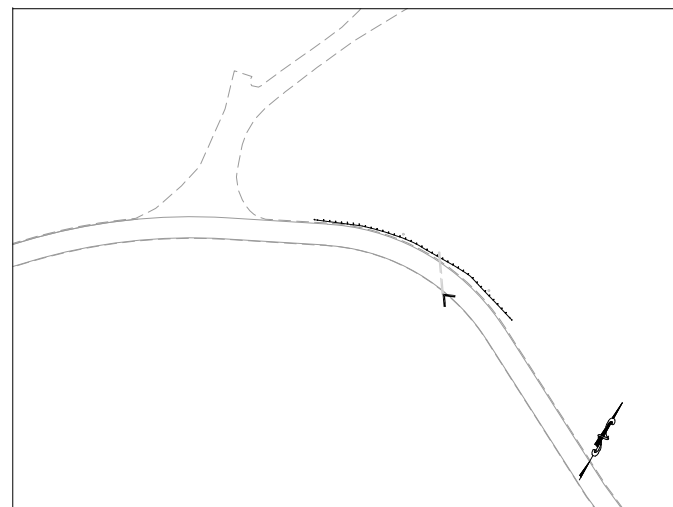
SITE 7: SLY PARK ROAD AT MORMON EMIGRANT TRAIL



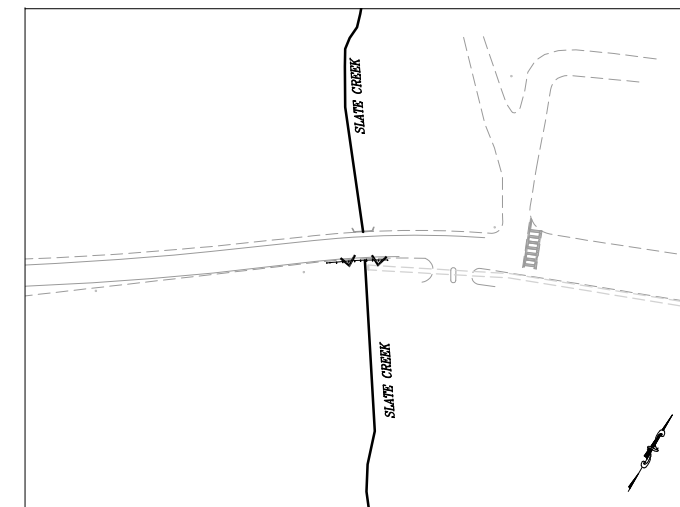
SITES 8&9: SLY PARK ROAD PM 6.56



SITE 10: NEWTOWN ROAD PM 2.83



SITE 11: NEWTOWN ROAD AT SNOWS ROAD



SITE 12: PLEASANT VALLEY ROAD PM 1.14

SCALE: 1" = 100'

FOR REDUCED PLANS ORIGINAL SCALE IS IN INCHES

REVISION	NUMBER	DATE	DESCRIPTION	BY



PREPARED UNDER THE SUPERVISION OF:

 REGISTERED CIVIL ENGINEER
 DATE: **MAY 17, 2023**

DESIGNED: DMG
 CHECKED: DWK
 ROAD NUMBER: ---
 DRAWN: DMG
 DATE: 5/2023



COUNTY OF EL DORADO
 DEPARTMENT OF TRANSPORTATION

GUARDRAIL UPGRADES MULTIPLE LOCATIONS -
 WEST SLOPE PROJECT
 EROSION CONTROL

SHEET
EC-1
 15 OF 19
 CONTRACT NO.
7590
 CIP No.
3610 5075

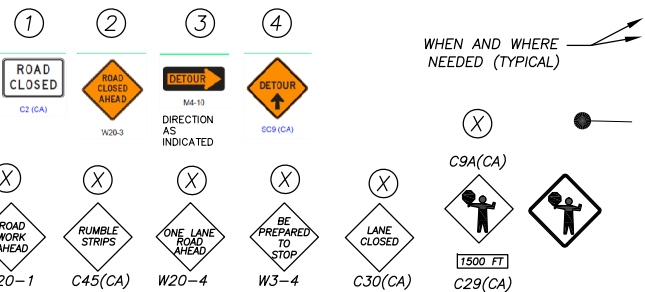
Drawing name: \\caddata\td-sit-engineering\civil_3d_projects\610_5075 - West Slope Guardrail\Engineering\PLAN\16-17 WS GUARDRAIL TC-1.dwg

LEGEND

- PROPOSED STAGING AREA WITH SF 5000 SF
- TEMPORARY TRAFFIC CONTROL SIGN
- TRAFFIC CONE
- FLAGGER
- PORTABLE TRANSVERSE RUMBLE STRIP ARRAYS
- WORK ZONE
- "END ROAD WORK" SIGN
- "ROAD WORK AHEAD" SIGN
- "RUMBLE STRIPS" SIGN
- "ONE LANE ROAD AHEAD" SIGN
- "FLAGGER AHEAD" SIGN
- "XXX FEET" SIGN
- "BE PREPARED TO STOP" SIGN
- "LANE CLOSED" SIGN

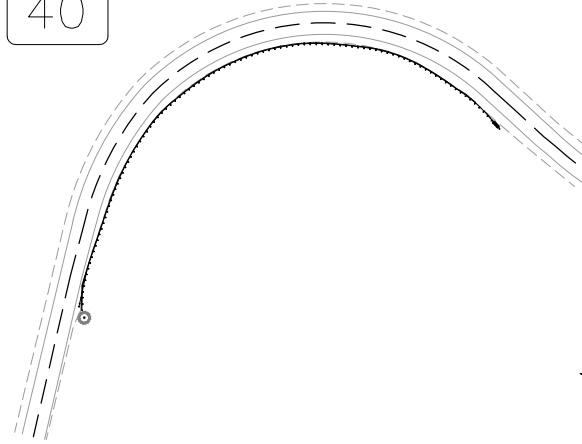
NOTES:

1. THIS PLAN HAS BEEN PREPARED AS A GUIDE FOR YOU IN PREPARATION OF A COMPLETE TRAFFIC CONTROL PLAN AND TO AID IN YOUR PLANNING FOR STAGING/STORAGE OF MATERIALS AND EQUIPMENT. YOUR TRAFFIC CONTROL PLAN WILL INCLUDE DETAILED CONTROLS INCLUDING FLAGGERS, LANE CLOSURES, AND SIGNS FOR ALL ITEMS OF ROAD WORK WHICH WILL REQUIRE ALTERATION OF EXISTING TRAFFIC PATTERNS. THE LEGEND SHOWS THE LIST OF SIGNS TO BE REQUIRED AS A MINIMUM.
2. YOUR TRAFFIC CONTROL PLAN WILL ADDRESS EACH PHASE OF CONSTRUCTION (e.g. GUARDRAILS, STRUCTURES ADJACENT TO AND/OR AFFECTING THE ROADWAY, ETC.) AND WILL CONFORM TO PART 6 OF THE CALIFORNIA MUTCD ENTITLED "TEMPORARY TRAFFIC CONTROL" AND THE SPECIAL PROVISIONS. YOUR TRAFFIC CONTROL PLAN WILL ALSO INCLUDE ALL SIGNING REQUIRED AT INTERSECTING STREETS WITHIN THE AREA THAT WILL REQUIRE TRAFFIC CONTROL.
3. SINGLE LANE CLOSURES WILL BE ALLOWED FOR THE INSTALLATION OF THE GUARDRAILS (VARIOUS LOCATIONS). AT ALL OTHER TIMES, TWO LANES OF TRAFFIC WILL BE MAINTAINED.
4. AT THE END OF EACH WORK DAY A MINIMUM OF TWO 10 FOOT LANES WILL BE OPENED TO PUBLIC TRAFFIC. NO LANE CLOSURE WILL PREVENT RESIDENTS FROM ACCESS TO THEIR PROPERTY.
5. WHEN LANE CLOSURES ARE REMOVED AND ROADS ARE OPEN TO PUBLIC TRAFFIC, ALL DRIVEWAYS WITHIN THE WORK AREA WILL BE ACCESSIBLE AND OPERATIONAL.
6. YOU WILL NOT EXCAVATE MORE THAN CAN BE INSTALLED AND BACKFILLED IN ONE WORKING DAY.
7. YOUR ATTENTION IS DIRECTED TO THE TEMPORARY EROSION CONTROL SHEETS AND THE SPECIAL PROVISIONS REGARDING TEMPORARY EROSION CONTROL REQUIREMENTS FOR STAGING AREAS.
8. STAGING AREAS SHOWN ARE FOR THE TEMPORARY STORAGE OF CONSTRUCTION MATERIALS AND EQUIPMENT WHICH ARE TO BE USED ON THIS PROJECT.



SLY PARK RD

SPEED LIMIT 40

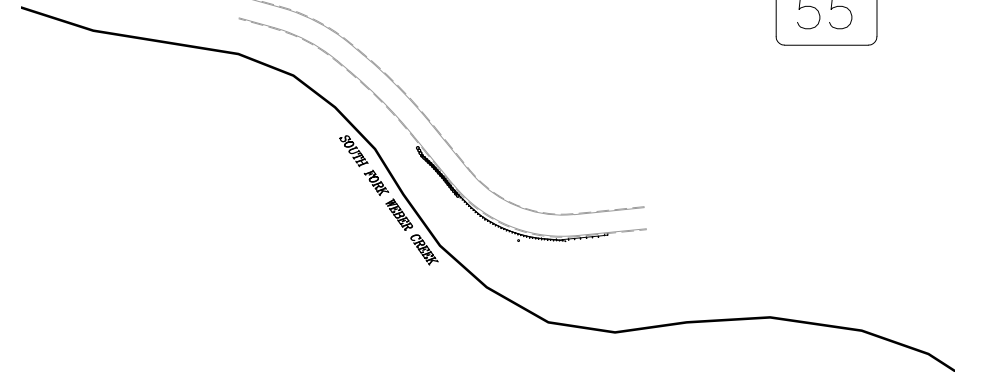


SITE 1: SLY PARK RD

SCALE: 1"=100'

NEWTOWN RD

SPEED LIMIT 55

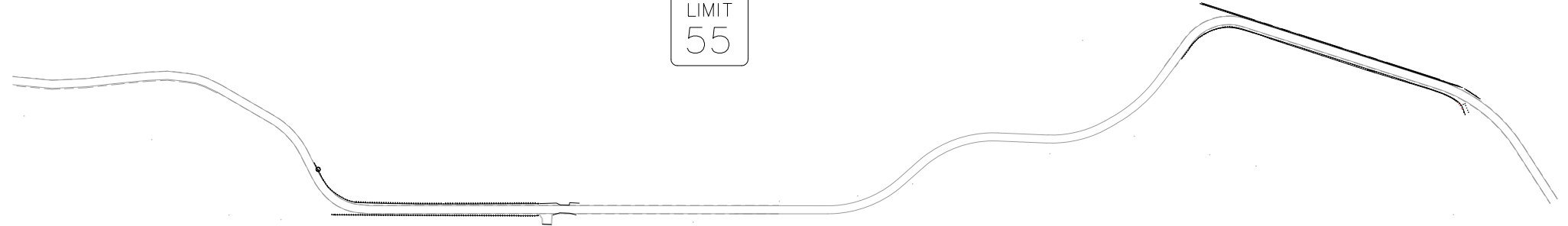


SITE 10: NEWTOWN RD

SCALE: 1"=100'

MORMON EMIGRANT TRAIL

SPEED LIMIT 55

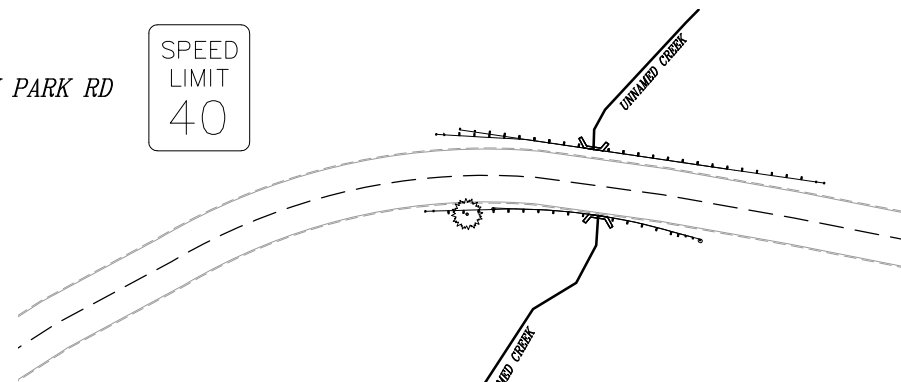


SITES 3, 4, 5 & 6: MORMON EMIGRANT TRAIL

SCALE: 1"=200'

SLY PARK RD

SPEED LIMIT 40



SITES 8&9: SLY PARK RD

SCALE: 1"=40'



PREPARED UNDER THE SUPERVISION OF:

 REGISTERED CIVIL ENGINEER
 DATE: **MAY 17, 2023**

DESIGNED: DMG
 DRAWN: DMG
 CHECKED: DWK
 DATE: 5/2023
 ROAD NUMBER: ---



COUNTY OF EL DORADO
 DEPARTMENT OF TRANSPORTATION

GUARDRAIL UPGRADES MULTIPLE LOCATIONS -
 WEST SLOPE PROJECT
 TRAFFIC CONTROL

SHEET
TC-1
 16 OF 19
 CONTRACT NO.
7590
 CIP No.
3610 5075

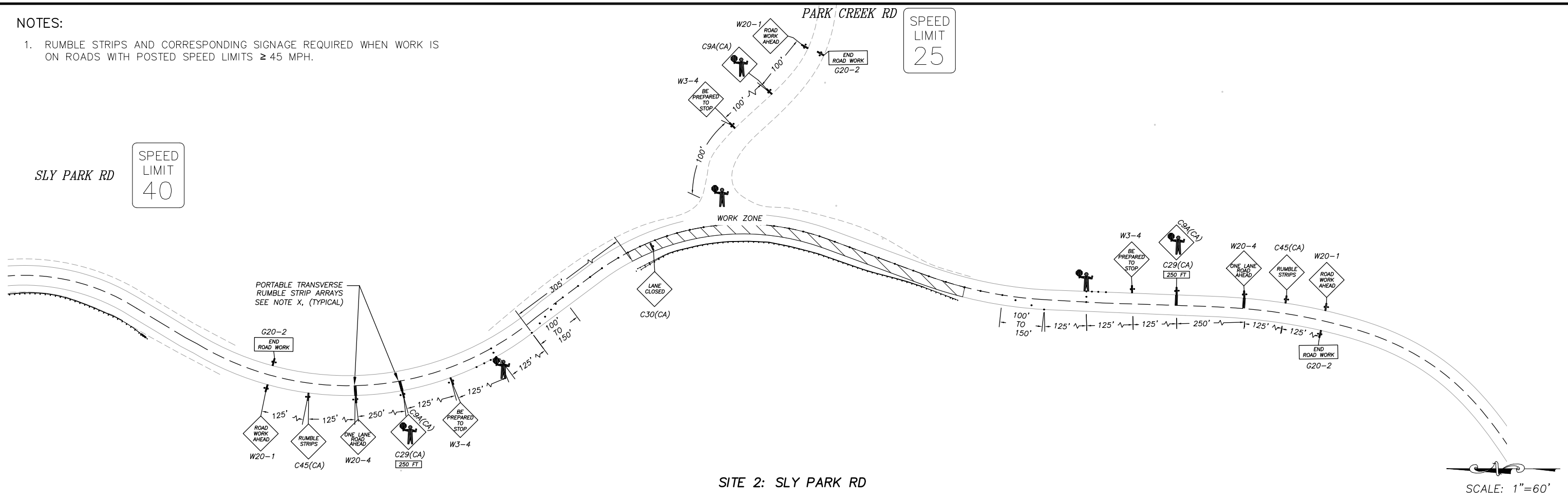
FOR REDUCED PLANS ORIGINAL SCALE IS IN INCHES

REVISION

NUMBER	DATE	DESCRIPTION	BY

NOTES:

- RUMBLE STRIPS AND CORRESPONDING SIGNAGE REQUIRED WHEN WORK IS ON ROADS WITH POSTED SPEED LIMITS ≥ 45 MPH.

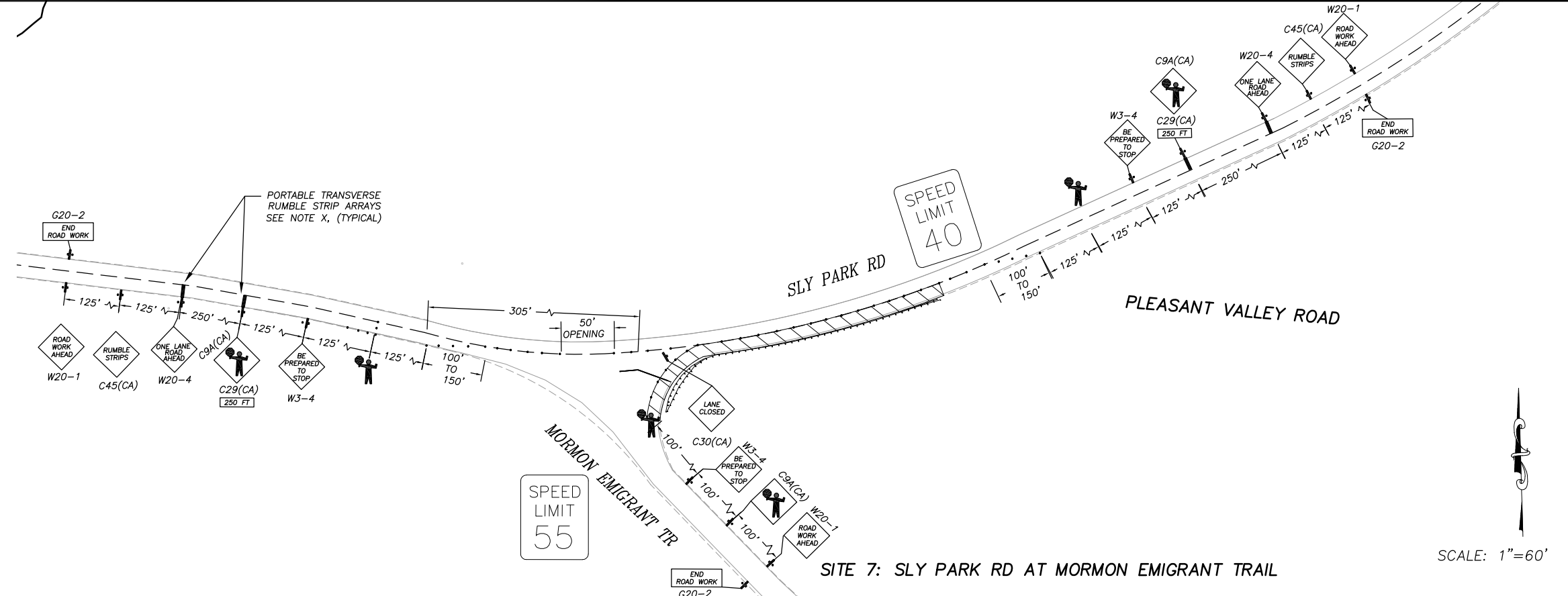


SITE 2: SLY PARK RD

SCALE: 1"=60'

LEGEND

- PROPOSED STAGING AREA WITH SF 5000 SF
- TEMPORARY TRAFFIC CONTROL SIGN
- TRAFFIC CONE
- FLAGGER
- PORTABLE TRANSVERSE RUMBLE STRIP ARRAYS
- WORK ZONE
- "END ROAD WORK" SIGN
- "ROAD WORK AHEAD" SIGN
- "RUMBLE STRIPS" SIGN
- "ONE LANE ROAD AHEAD" SIGN
- "FLAGGER AHEAD" SIGN
- "XXX FEET" SIGN
- "BE PREPARED TO STOP" SIGN
- "LANE CLOSED" SIGN



SITE 7: SLY PARK RD AT MORMON EMIGRANT TRAIL

SCALE: 1"=60'

Drawing name: \\C:\data\td\slit-Engineering\DWG_3D PROJECTS\3610 5075 - West Slope Guardrail\Engineering\PLAN\15-17 WS GUARDRAIL TC-1.dwg

ORIGINAL SCALE IS IN INCHES

FOR REDUCED PLANS

REVISION	NUMBER	DATE	DESCRIPTION	BY



PREPARED UNDER THE SUPERVISION OF:

 REGISTERED CIVIL ENGINEER
MAY 17, 2023
 DATE:

DESIGNED: DMG
 DRAWN: DMG
 CHECKED: DWK
 DATE: 5/2023
 ROAD NUMBER: ---



COUNTY OF EL DORADO
 DEPARTMENT OF TRANSPORTATION

GUARDRAIL UPGRADES MULTIPLE LOCATIONS -
 WEST SLOPE PROJECT
 TRAFFIC CONTROL

SHEET
TC-2
 17 OF 19
 CONTRACT NO.
7590
 CIP No.
3610 5075

Drawing name: \\C:\data\td-sit-Engineering\Civil_3D PROJECTS\3610 5075 - West Slope Guardrail\Engineering\PLAN\15-17 WS GUARDRAIL TC-1.dwg

FOR REDUCED PLANS ORIGINAL SCALE IS IN INCHES

2
1
0

REVISION

NUMBER	DATE	DESCRIPTION	BY



PREPARED UNDER THE SUPERVISION OF:

 REGISTERED CIVIL ENGINEER
MAY 17, 2023
 DATE:

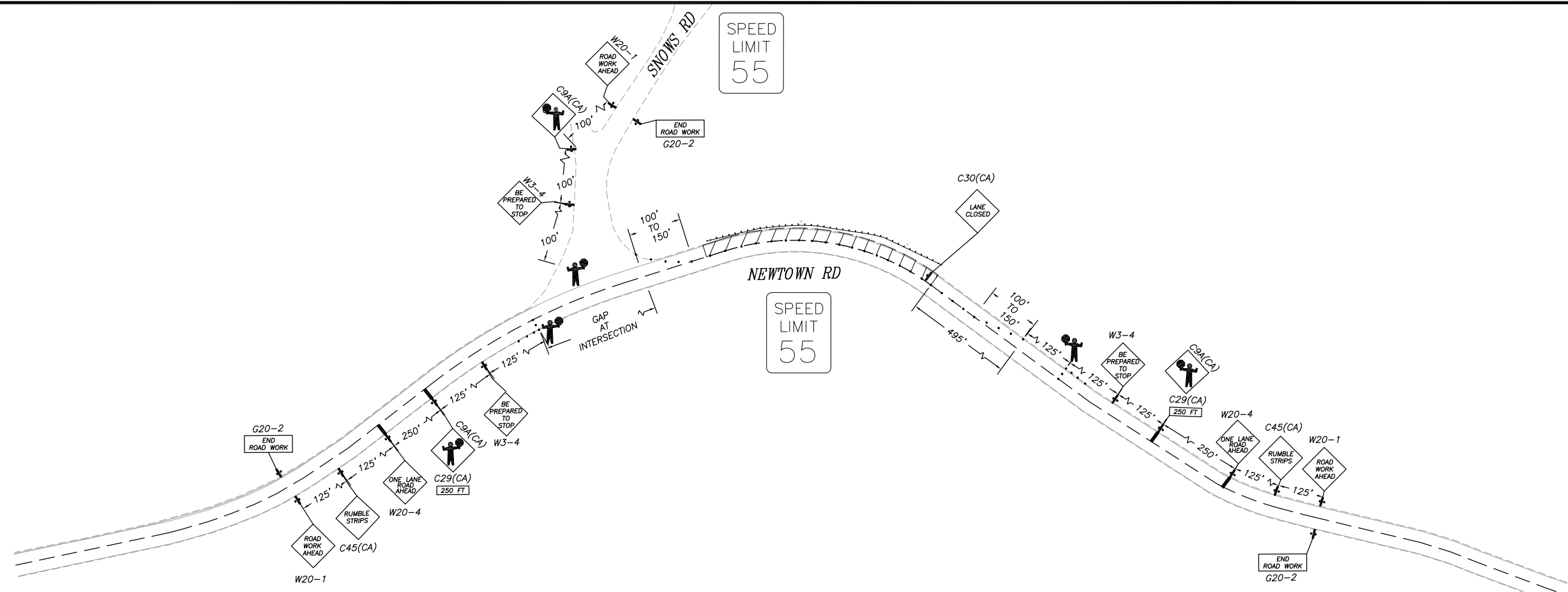
DESIGNED: DMG
 DRAWN: DMG
 CHECKED: DWK
 DATE: 5/2023
 ROAD NUMBER: ---



COUNTY OF EL DORADO
 DEPARTMENT OF TRANSPORTATION

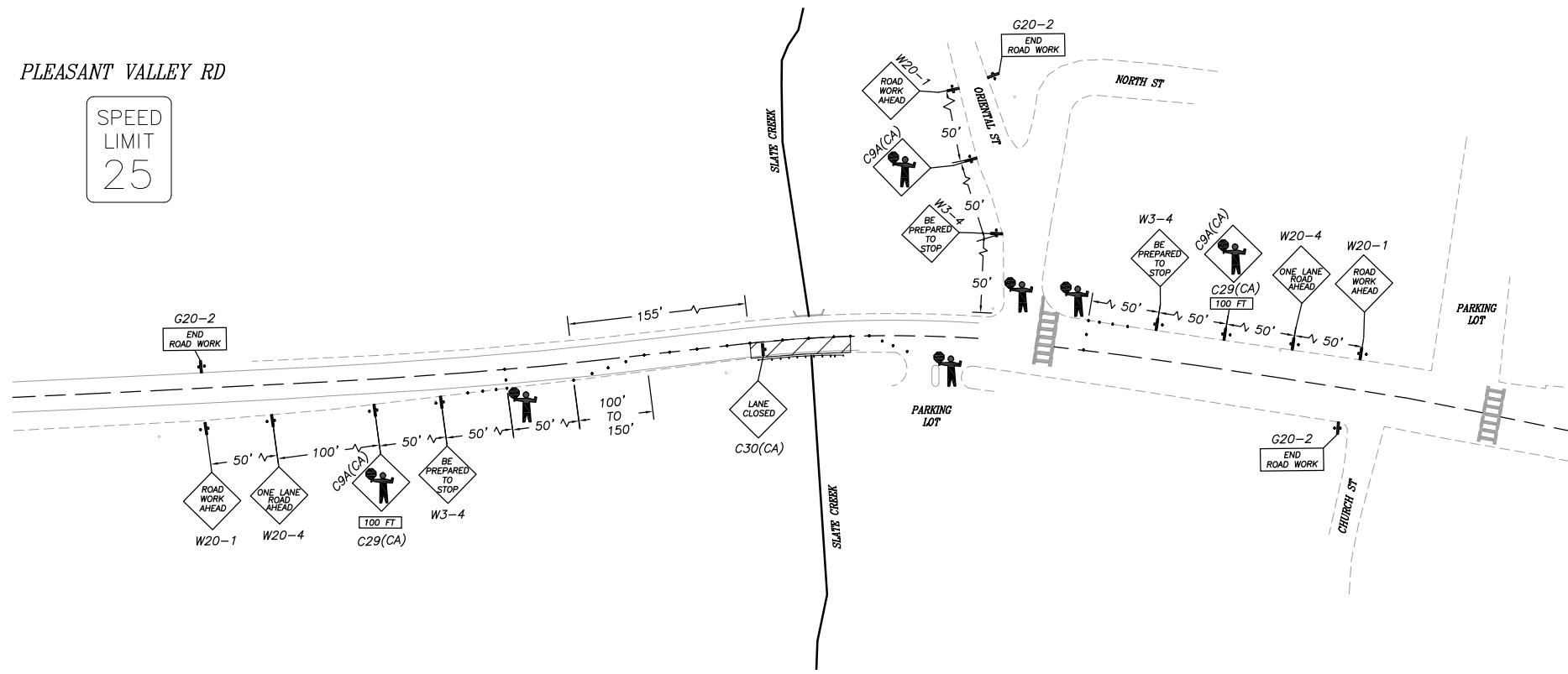
GUARDRAIL UPGRADES MULTIPLE LOCATIONS -
 WEST SLOPE PROJECT
 TRAFFIC CONTROL

SHEET
TC-3
 18 of 19
 CONTRACT NO.
7590
 CIP No.
3610 5075



SITE 11: NEWTOWN RD AT SNOWS RD

SCALE: 1"=60'

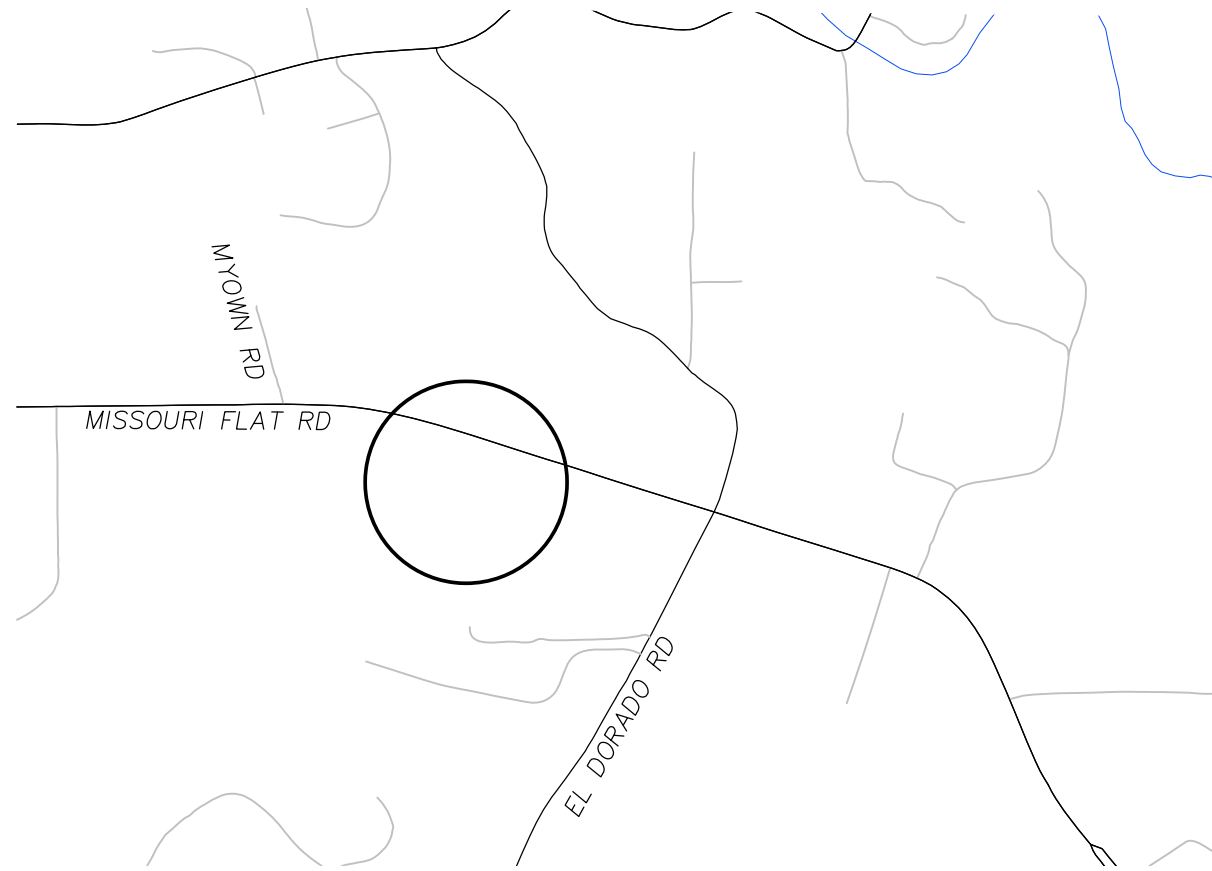


SITE 12: PLEASANT VALLEY ROAD

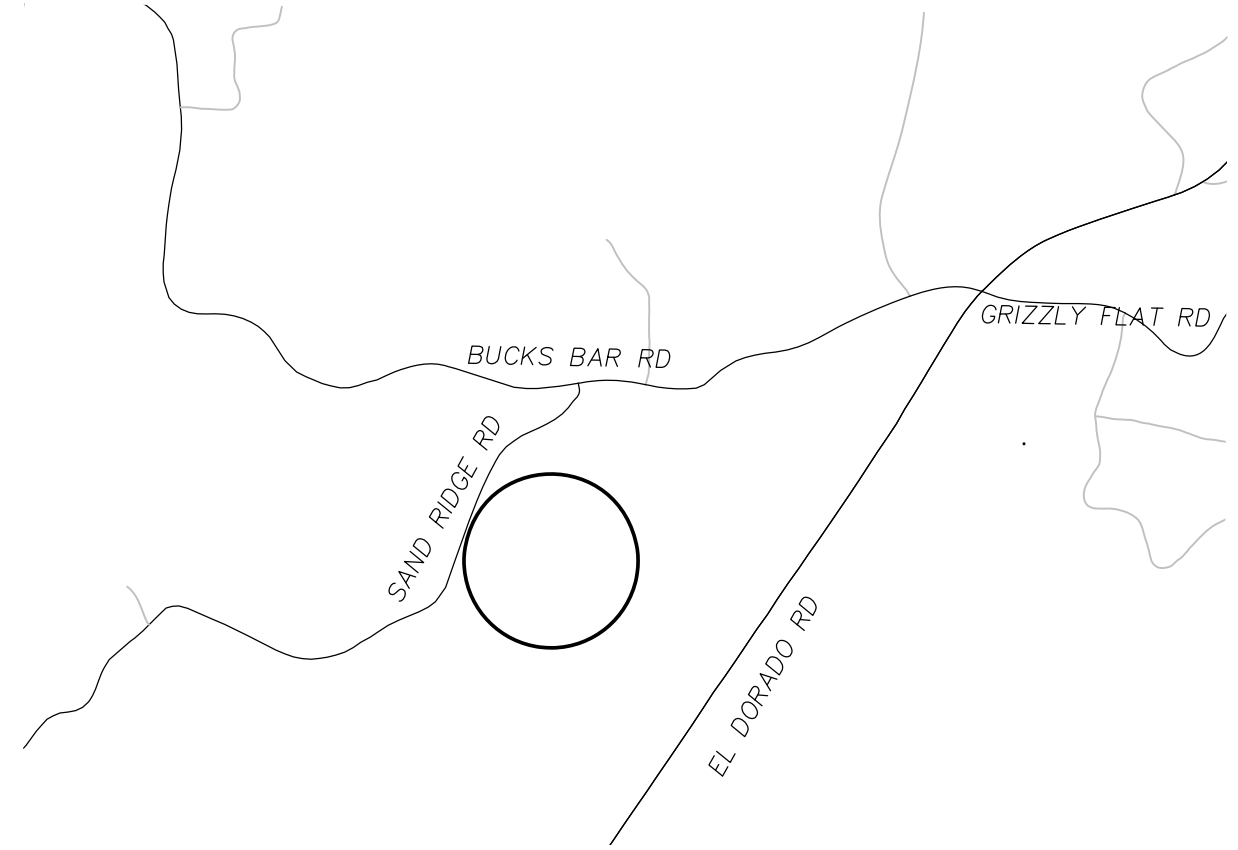
SCALE: 1"=60'

Drawing name: \\C:\Users\TD-SLT-Engineering\My Documents\Projects\3610 5075 - West Slope Guardrail\Engineering\PLAN\15-17 WS SUBORDINAL TC-4.dwg

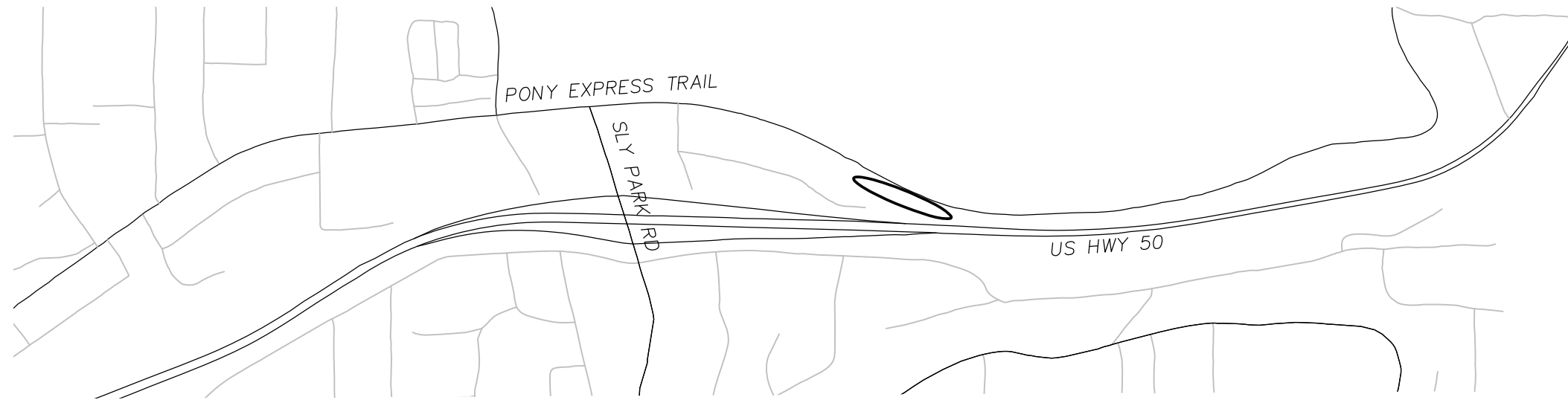
FOR REDUCED PLANS
REVISION
2 ORIGINAL SCALE IS IN INCHES
1
0



MISSOURI FLAT PIT
3671 MISSOURI FLAT ROAD,
PLACERVILLE, CA 95667



SOMERSET YARD
4780 SANDRIDGE RD,
PLACERVILLE, CA 95667

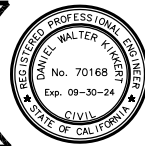


BULLION BEND
~1/2 MILE EAST OF SLY PARK RD ON
PONY EXPRESS TRAIL

○ - PROJECT STAGING AREAS

SCALE: 1" = 400'

NUMBER	DATE	DESCRIPTION	BY



PREPARED UNDER THE SUPERVISION OF:

[Signature]

REGISTERED CIVIL ENGINEER
DATE: **MAY 17, 2023**

DESIGNED: DMG
DRAWN: DMG
CHECKED: DWK
DATE: 5/2023
ROAD NUMBER: ---



COUNTY OF EL DORADO
DEPARTMENT OF TRANSPORTATION

GUARDRAIL UPGRADES MULTIPLE LOCATIONS -
WEST SLOPE PROJECT
STAGING AREAS

SHEET
TC-4
19 OF 19
CONTRACT NO.
7590
CIP No.
3610 5075