

# EL DORADO COUNTY CHILD WELFARE SYSTEM OUTCOMES

## Statistical Abstract

# Table of Contents

Federal and State Child Welfare Outcomes and Measures .....	3
SAFETY OUTCOMES .....	4
PERMANENCY OUTCOMES.....	15
WELL-BEING OUTCOMES .....	34
Performance Relative to National Standard as of Q2 2009 .....	40

All data in this report was obtained from the California Welfare Dynamic Report System available at: [http://csr.berkeley.edu/ucb\\_childwelfare/](http://csr.berkeley.edu/ucb_childwelfare/). This report represents a sampling of federal and state child welfare outcome measures for El Dorado County and comparator agencies. Comparator agencies were selected on the basis of total population.

## Federal and State Child Welfare Outcomes and Measures

	Federal Child Welfare Outcomes	Federal Measures (Indicators & Composites)	Additional State Measures (AB 636)
Safety Outcomes	Children are first and foremost protected from abuse and neglect	No recurrence of maltreatment  No maltreatment in foster care	Participation rates (referral, substantiation, entry, in care)
	Children are safely maintained in their homes whenever possible and appropriate	No data indicators	Timely response to investigations  Timely social worker visits with child
Permanency Outcomes	Children have permanency and stability in their living situations	Reunification and reentry  Adoption  Permanency for children in long-term care  Placement stability	Least restrictive placements  Placed with siblings  Native American children placed with family or tribe
	The continuity of family relationships and connections is preserved for children	No data indicators	
Well-being Outcomes	Families have enhanced capacities to provide for their children's needs	No data indicators	Status of youth aging out of care
	Children receive appropriate services to meet their educational needs		Authorized for psychotropic medications
	Children receive adequate services to meet their physical and mental health needs		Timely medical and dental exams  Health records documented  Individualized Education Plans documented

# SAFETY OUTCOMES

## AND MEASURES

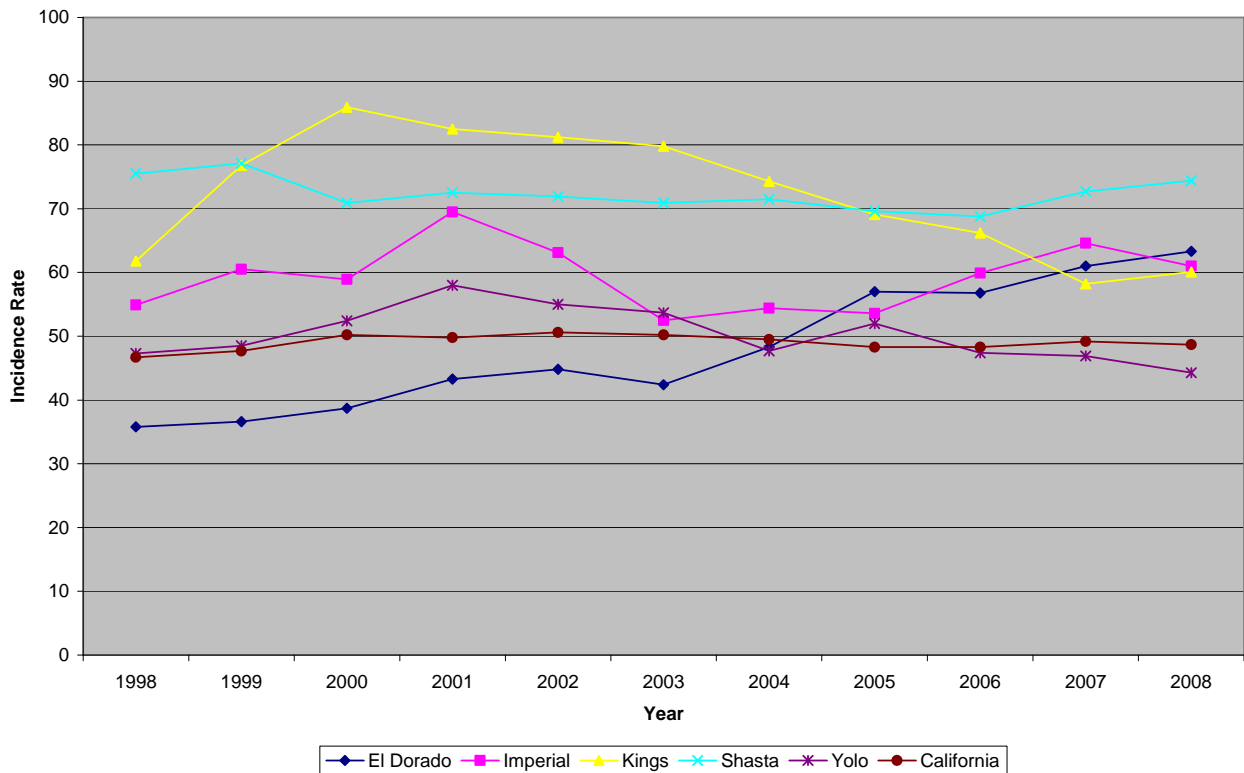
**Child Welfare Outcome:** Safety

**State Measure:** Referral Rate  
(What is the incidence rate for child abuse or neglect allegations?)

**Direction of desired change:** ( - ) Downward

- In El Dorado County, child abuse and/or neglect allegations have increased 75% since 1998.
- The rate of allegations statewide and in comparator counties is relatively flat, while the rate of allegations in El Dorado County is trending upward.

Allegations: Incidence per 1,000 Children



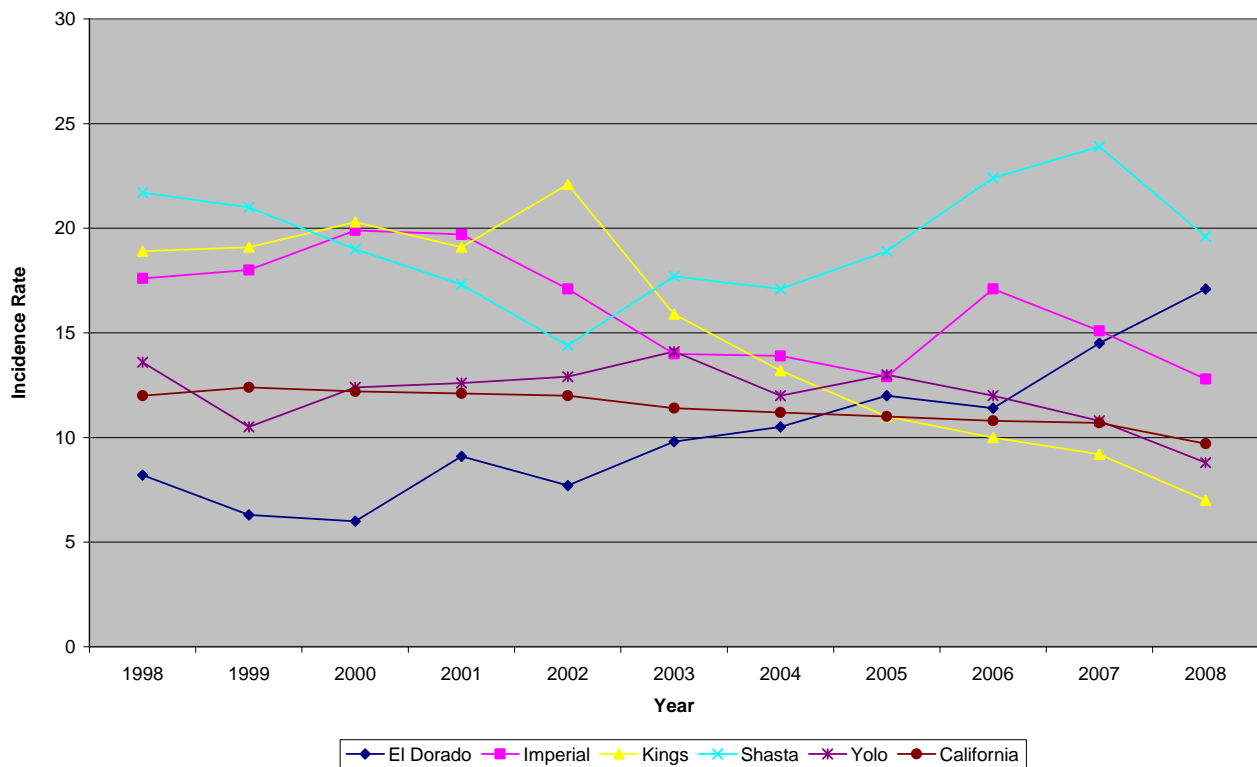
**Child Welfare Outcome:** Safety

**State Measure:** Substantiation Rate  
(What is the incidence rate of children with a substantiated child abuse or neglect allegation?)

**Direction of desired change:** ( - ) Downward

- The rate of substantiated instances of child abuse or neglect has increased in El Dorado County since 1998 and continues to trend upward.
- The rates of substantiated instances of child abuse or neglect in comparator counties and generally statewide are decreasing to varying degrees.

Substantiations: Incidence per 1,000 Children



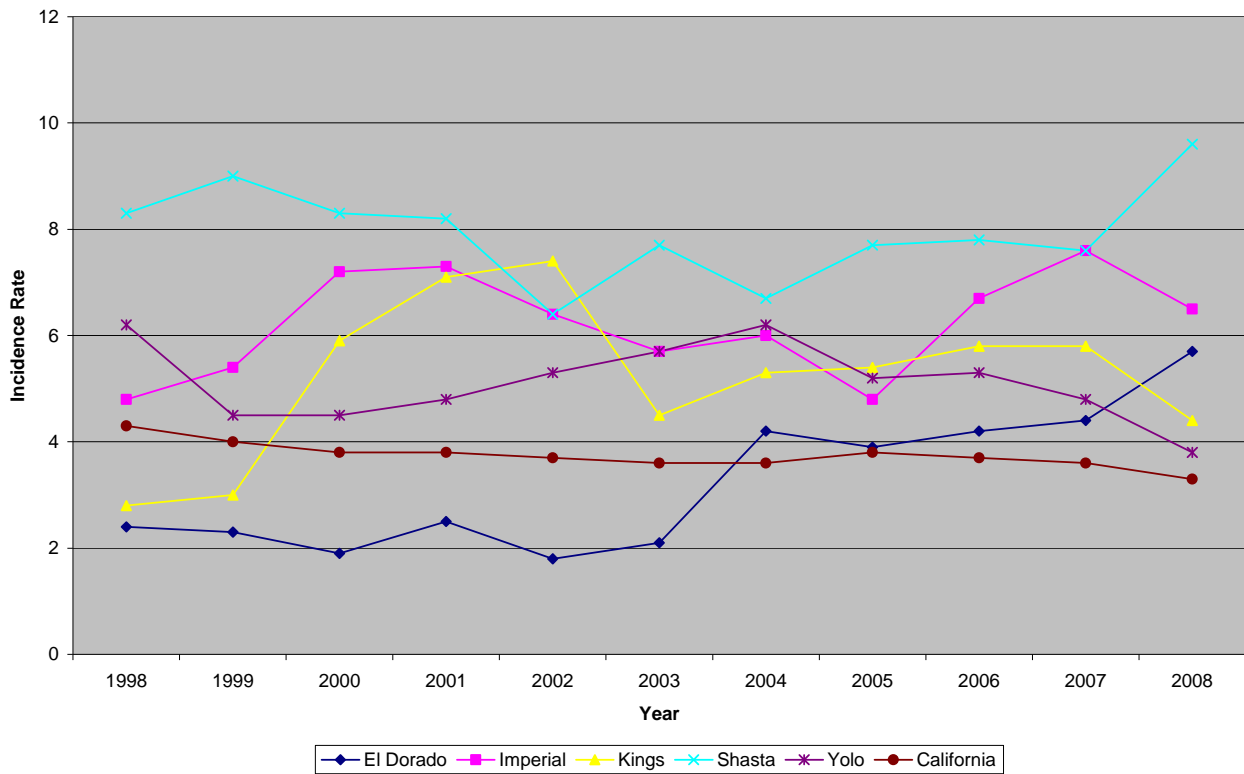
**Child Welfare Outcome:** Safety

**State Measure:** Entry Rate  
(What is the incidence rate of children entering [or reentering] foster care?)

**Direction of desired change:** ( - ) Downward

- Entries into the child welfare system are trending slightly downward statewide.
- Entries into the child welfare system are trending upward in El Dorado County, however the rate of entries has been lower than the rates in most comparator counties.

Entries: Incidence per 1,000 Children



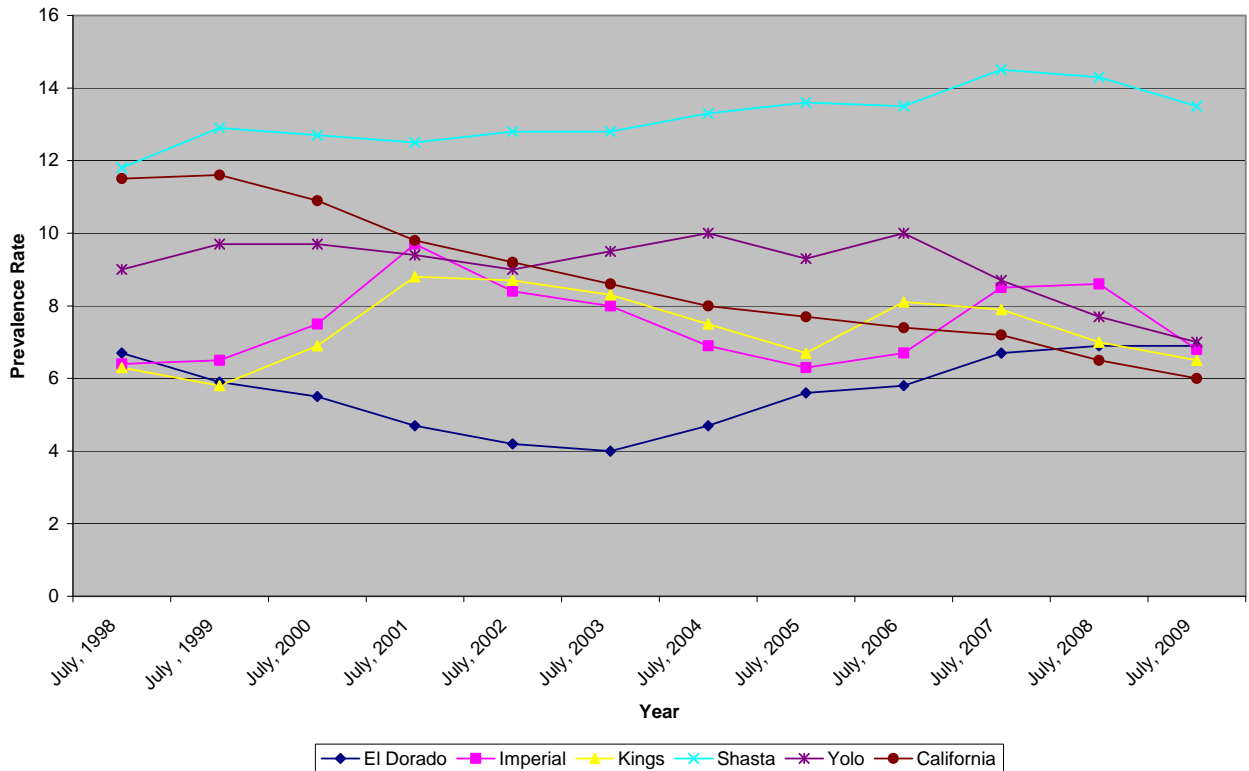
**Child Welfare Outcome:** Safety

**State Measure:** In Care Rate  
(What is the rate of children in child welfare supervised foster care?)

**Direction of desired change:** ( - ) Downward

- The prevalence rate for children in supervised foster care has increased 3% since 1998, and is currently lower than the average rate among comparator counties.
- El Dorado County's prevalence rate for children in supervised foster care has increased slightly, but is near the statewide average.

**In Child Welfare Supervised Foster Care: Prevalence per 1,000 Children**





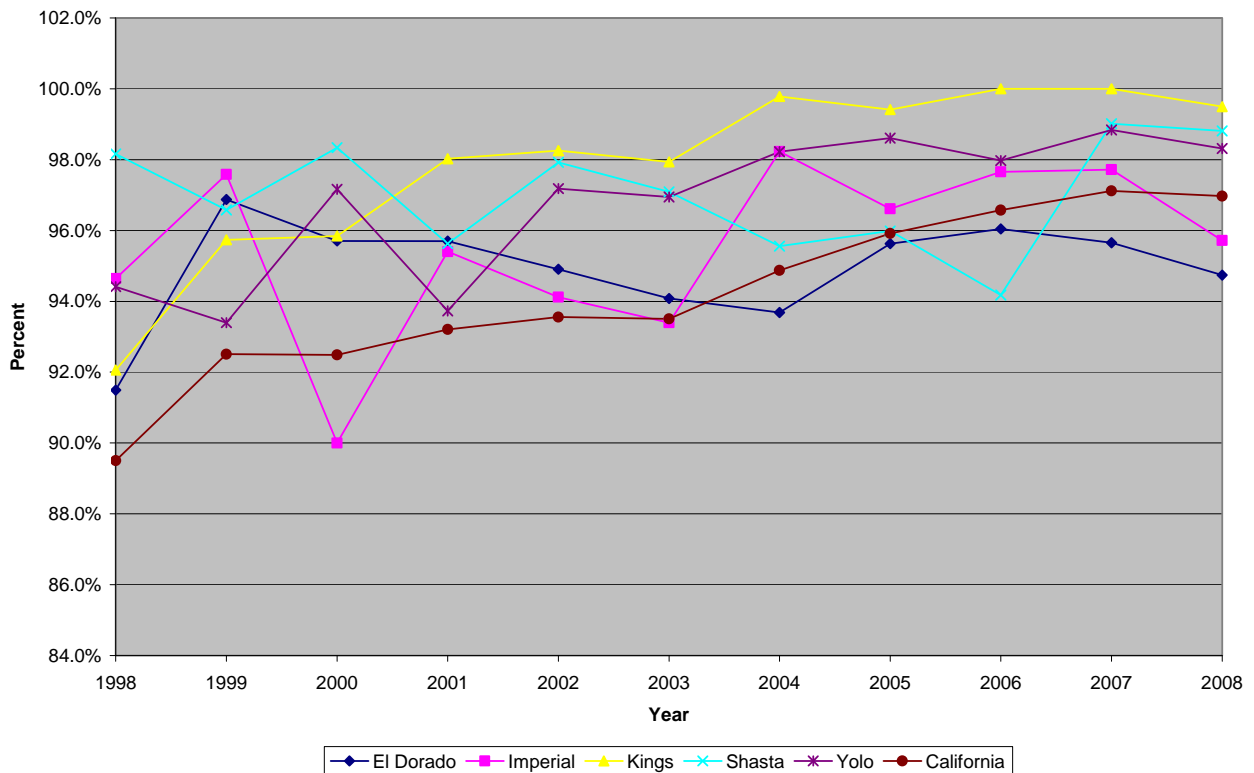
**Child Welfare Outcome:** Safety

**State Measure:** Timely Response to Referrals (Immediate)  
(What is the percentage of on time face to face investigations of immediate response referrals?)

**Direction of desired change:** ( + ) Upward

- The percentage of immediate response referrals receiving a timely response in El Dorado County is trending upward, but at 95% is slightly under the current statewide rate at 97%.

**Percent of Required Immediate Response Referrals Receiving a Timely Response**



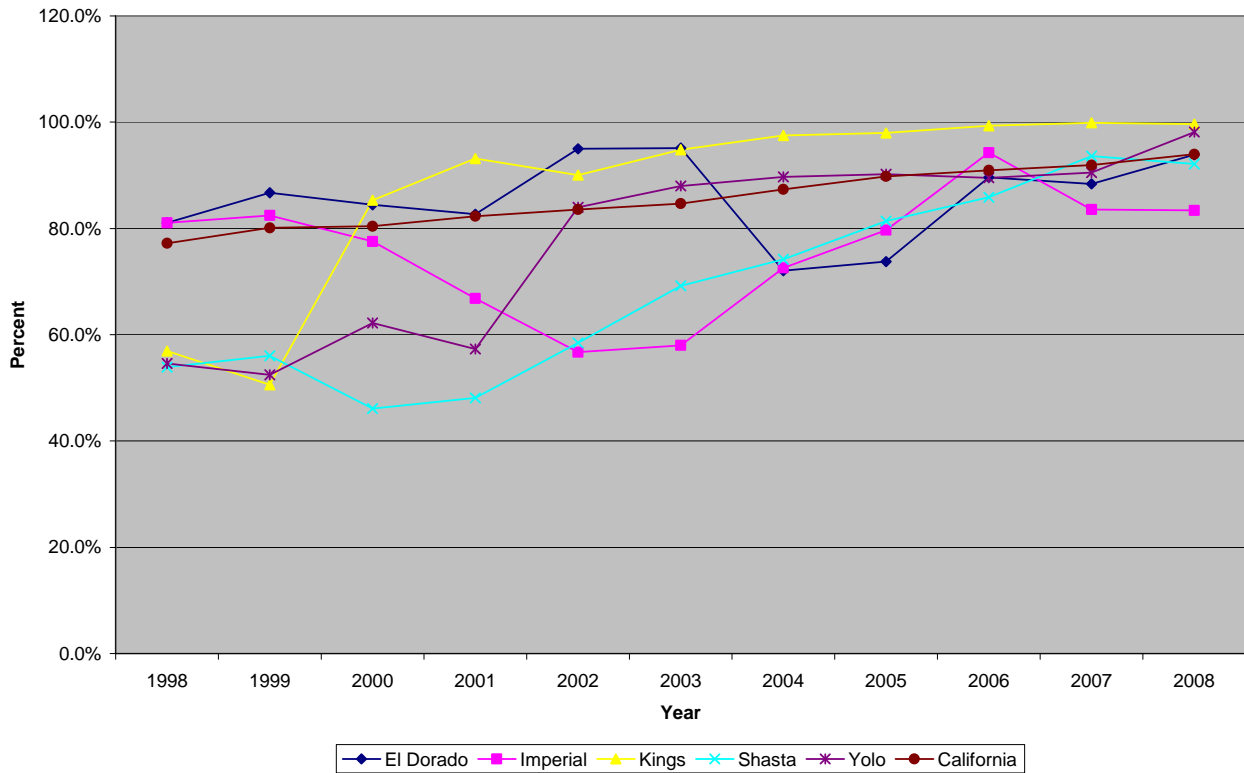
**Child Welfare Outcome:** Safety

**State Measure:** Timely Response to Referrals (10-day)  
(What is the percentage of on time face to face investigations of 10-day response referrals?)

**Direction of desired change:** ( + ) Upward

- The percentage of 10-day response referrals receiving a timely response in El Dorado County has increased significantly over the last five years and is consistent with the current statewide rate.

**Percent of Required 10-Day Response Referrals Receiving a Timely Response**



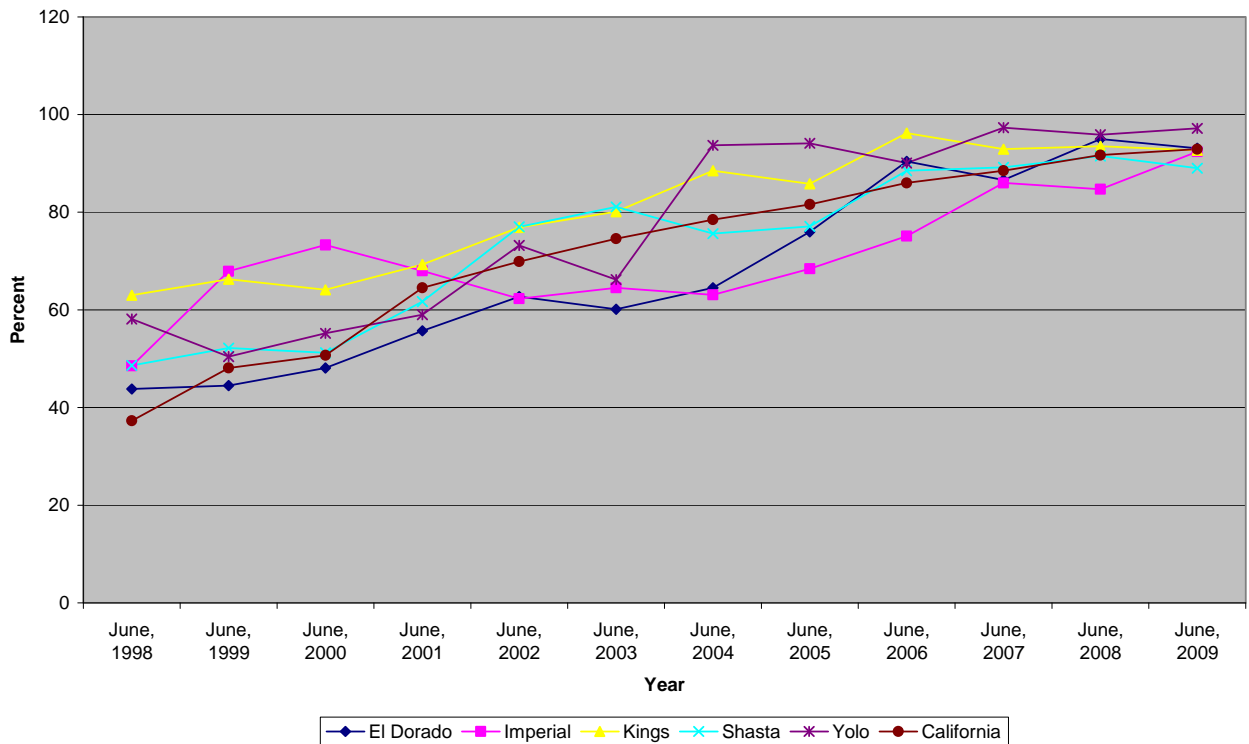
**Child Welfare Outcome:** Safety

**State Measure:** Timely Social Worker Visits  
(What is the percentage of timely in-person monthly social worker contacts with children?)

**Direction of desired change:** ( + ) Upward

- The percentage of children requiring a caseworker contact who received the contact in a timely manner has increased significant from 44% in 1998 to 93% in 2009.
- This is a positive trend in El Dorado County and is consistent with the trend statewide and in comparator counties.

**Percentage of Children Requiring a Caseworker Contact Who Received the Contact in a Timely Manner**



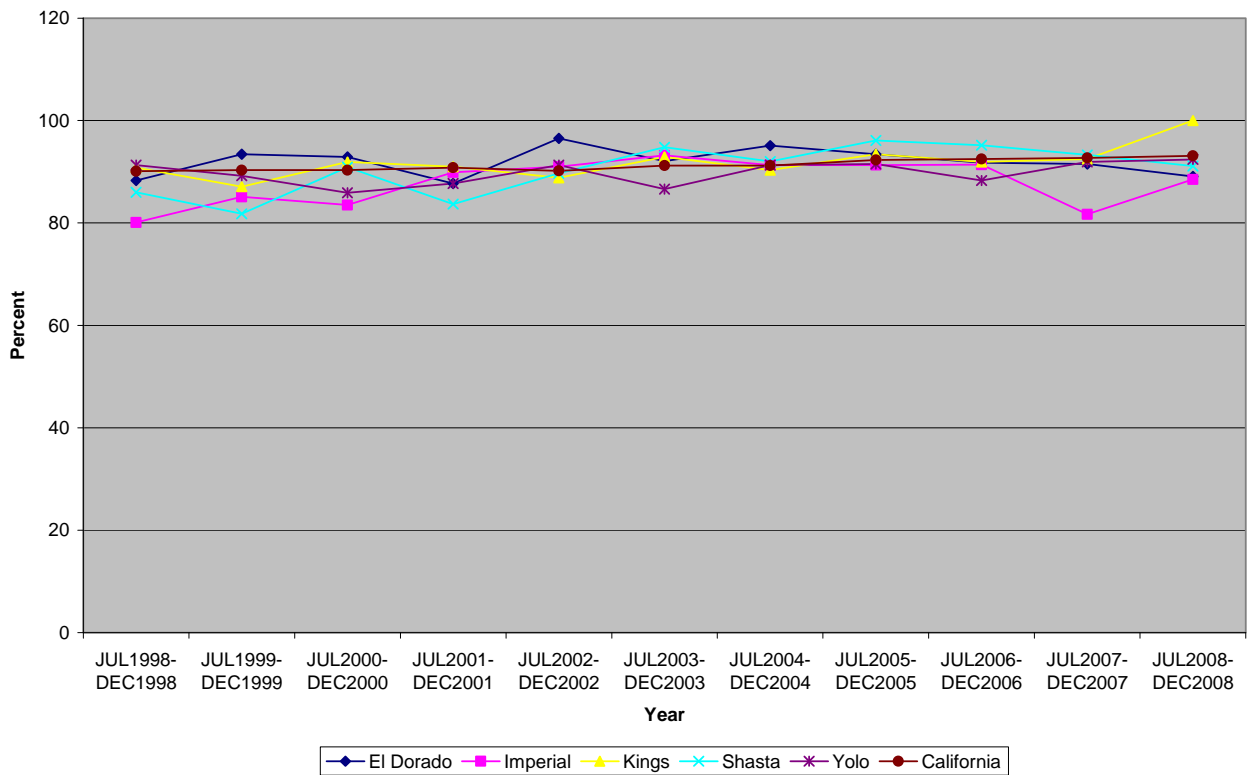
**Child Welfare Outcome:** Safety

**Federal Measure:** No Recurrence of Maltreatment  
(Of all children who were victims of a substantiated maltreatment allegation during the 6-month period, what percent were not victims of another substantiated maltreatment allegation within the next 6 months?)

**Direction of desired change:** ( + ) Upward

- The percentage of children in the El Dorado County child welfare system who were victims of a substantiated maltreatment allegation during the six month period (July through December) who were not victims of another substantiated maltreatment has remained flat.
- The rate of recurrence of maltreatment in El Dorado County is consistent with the rates in statewide and in comparator counties.

Percent with no recurrence of maltreatment within 6 months



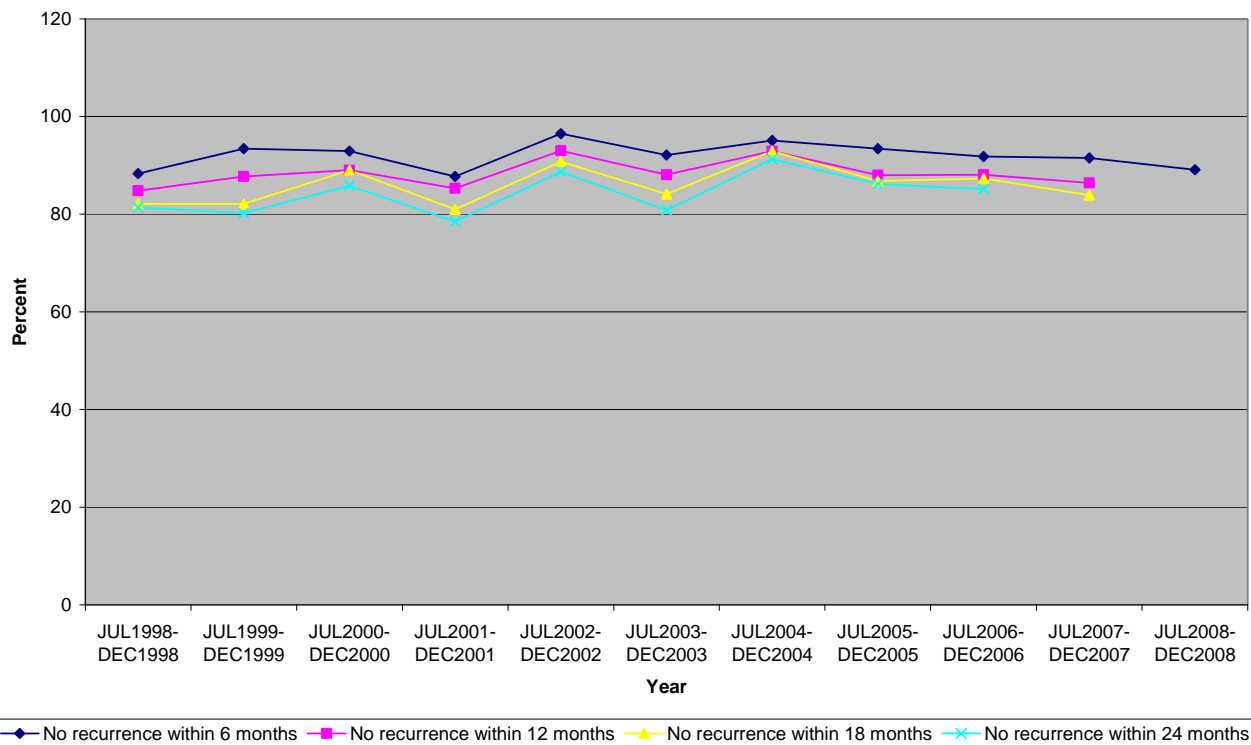
**Child Welfare Outcome:** Safety

**Federal Measure:** No Recurrence of Maltreatment  
(Of all children who were victims of a substantiated maltreatment allegation during the 6-month period, what percent were not victims of another substantiated maltreatment allegation within the next 6, 12, 18 and 24 months?)

**Direction of desired change:** ( + ) Upward

- The percentage of children in the El Dorado County child welfare system with no recurrence of maltreatment declines with increasing intervals of time, but these rates are also similar to comparator counties and statewide.

Percent of children in the El Dorado County child welfare system with no recurrence of maltreatment: 6, 12, 18 and 24 months

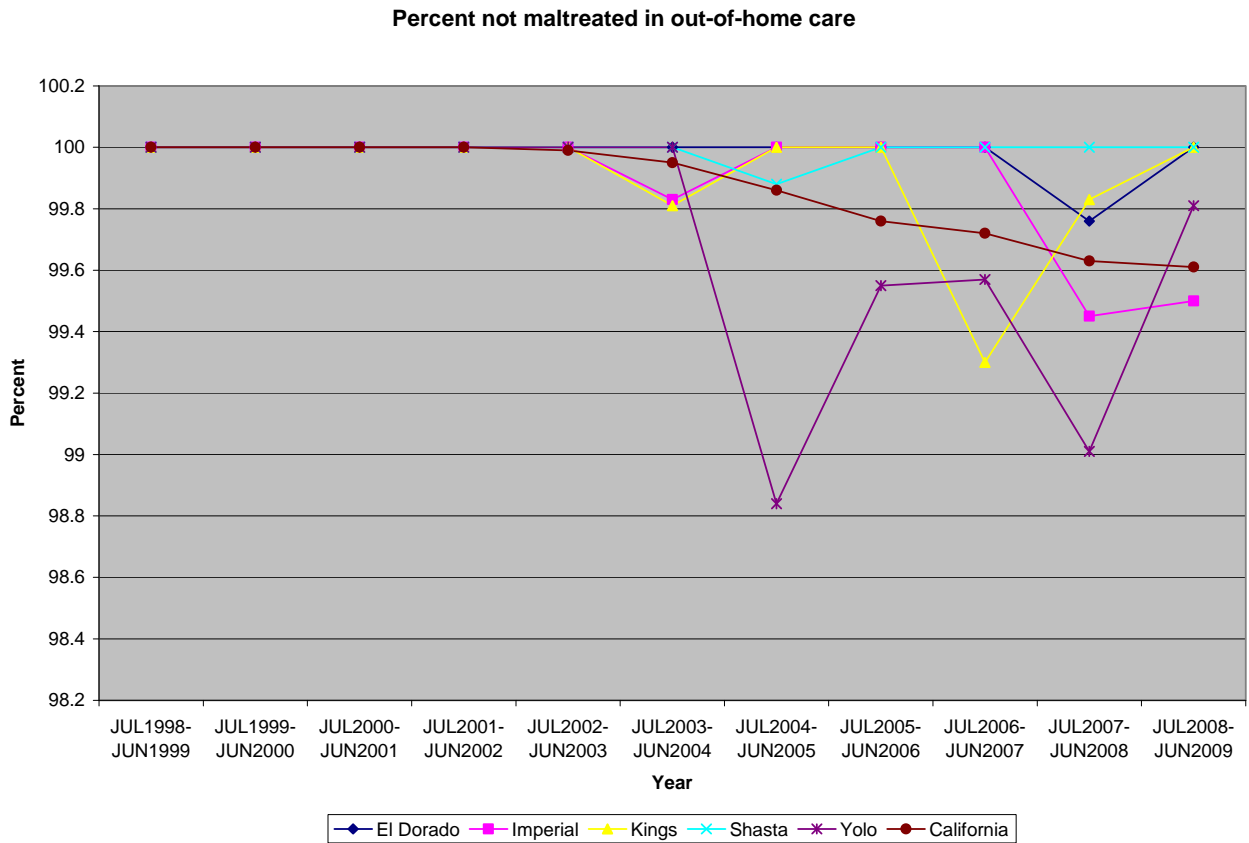


**Child Welfare Outcome:** Safety

**Federal Measure:** No maltreatment in Foster Care  
(What percentage of children were not victims of a substantiated maltreatment report by a foster parent or facility staff while in out-of-home care?)

**Direction of desired change:** ( + ) Upward

- The percentage of children in El Dorado County with no maltreatment in foster care is higher than the statewide rate and most comparator counties at or very near 100%.



# PERMANENCY OUTCOMES AND MEASURES

**Child Welfare Outcome:**

**Permanency**

**Federal Measure:**

**Reunification within 12 months (Exit Cohort)**

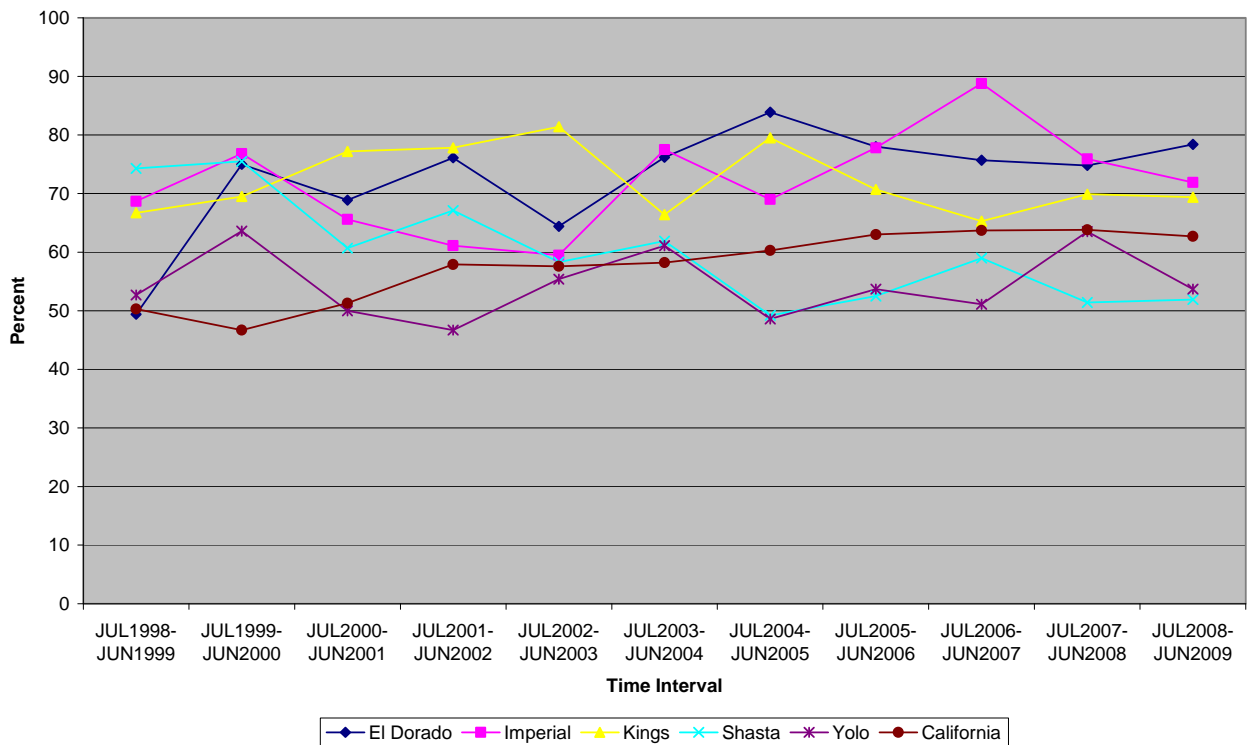
(Of all children discharged from foster care to reunification during the year who had been in foster care for 8 days or longer, what percent were reunified in less than 12 months from the date of the latest removal from home?)

**Direction of desired change:**

**( + ) Upward**

- The percentage of children in the El Dorado County child welfare system (in foster care 8 days or more) reunified in less than 12 months is increasing.
- The rate in El Dorado County has remained significantly higher than the statewide trend.

**Percent exiting to reunification in less than 12 months**  
**Selected Subset: Number of Days in Care: 8 days or more**



Agency type: child welfare



**Child Welfare Outcome:**

**Permanency**

**Federal Measure:**

**Median Time to Reunification (Exit Cohort)**

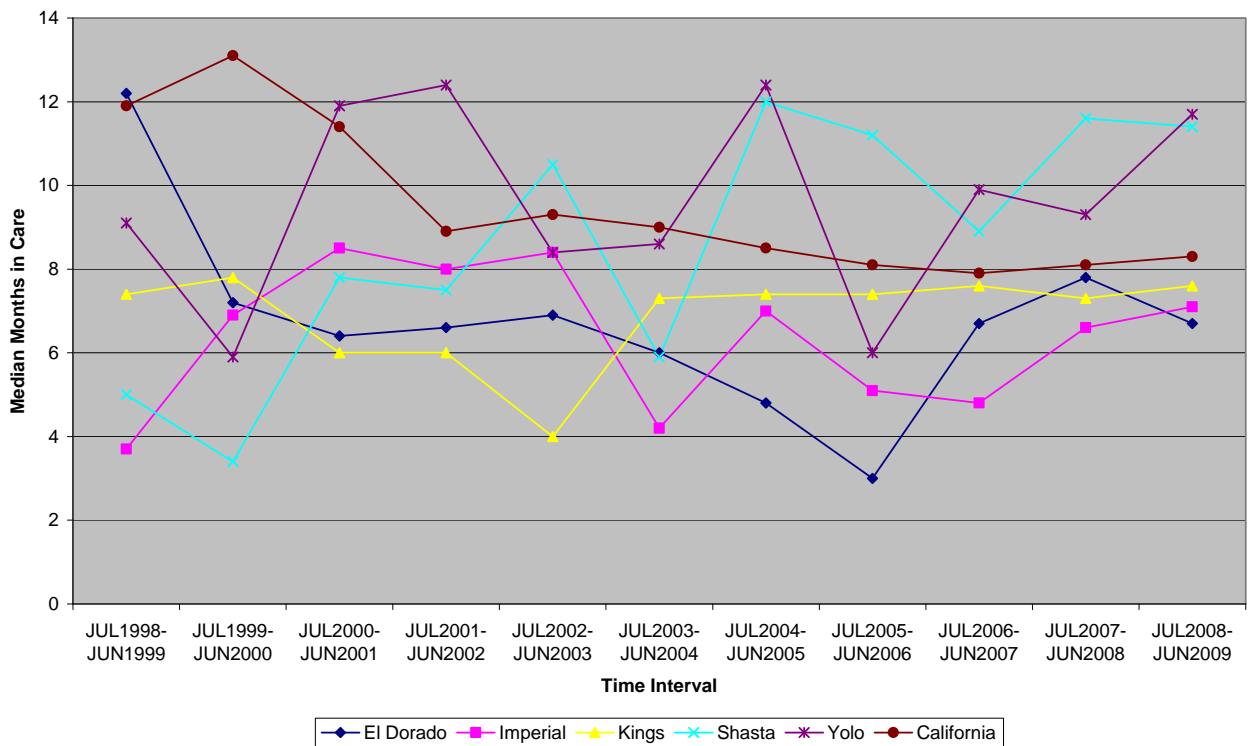
(Of all children discharged from foster care to reunification during the year who had been in foster care for 8 days or longer, what was the median length of stay (in months) from the date of latest removal from home until the date of discharge to reunification?)

**Direction of desired change:**

**( - ) Downward**

- The median time to reunification among children in the El Dorado County child welfare system eight days or more has decreased since 1998.

**Median time (months) from latest removal to reunification  
Selected Subset: Number of Days in Care: 8 days or more**



Agency type: child welfare

**Child Welfare Outcome:**

**Permanency**

**Federal Measure:**

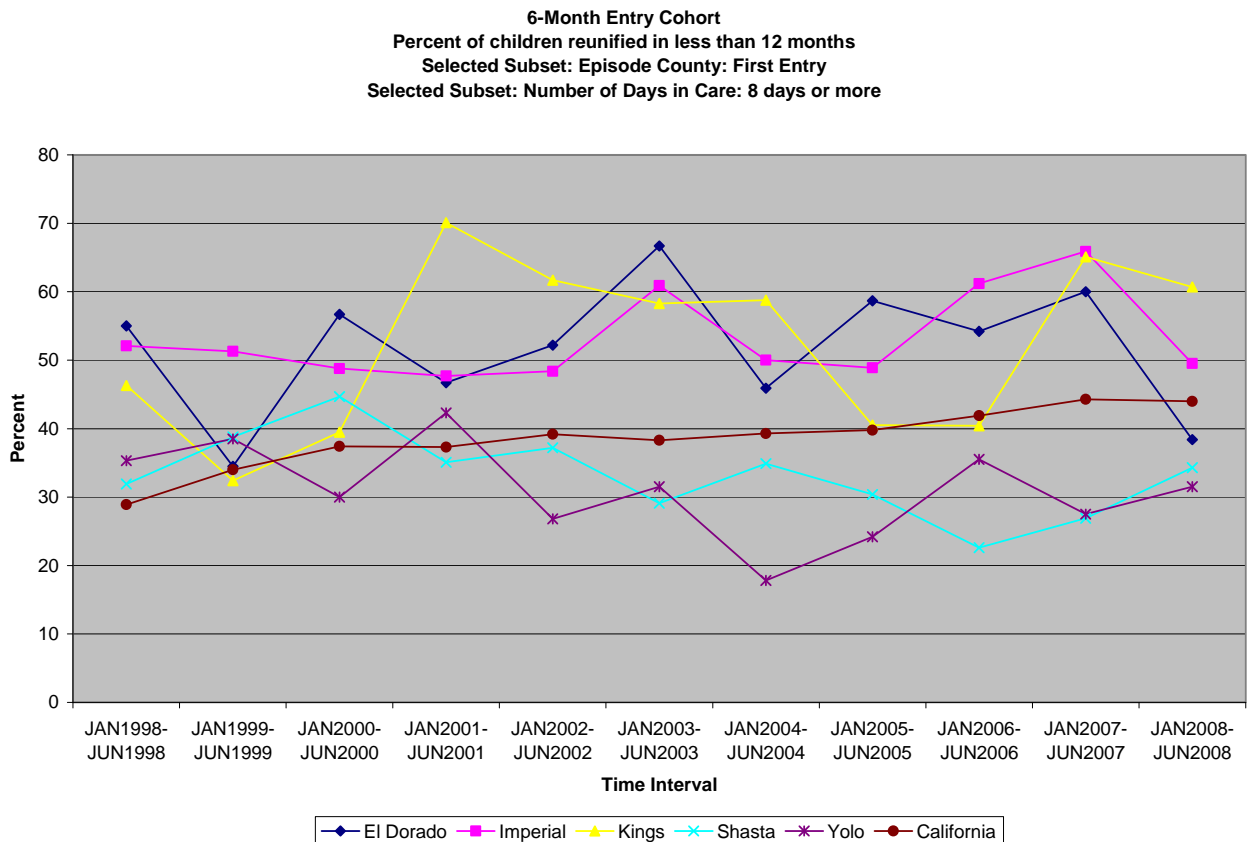
**Reunification within 12 months (Entry Cohort)**

(Of all children entering foster care for the first time in the 6-month period who remained in foster care for 8 days or longer, what percent were discharged from foster care to reunification in less than 12 months from the date of latest removal from home?)

**Direction of desired change:**

**( + ) Upward**

- The percentage of children entering foster care for the first time in this 6 month period who are discharged from foster care and reunified within 12 months from last removal is increasing in El Dorado County.
- The percentage of children in this entry cohort has historically been higher than the statewide trend.



Agency type: child welfare

**Child Welfare Outcome:**

**Permanency**

**Federal Measure:**

**Reentry Following Reunification (Exit Cohort)**

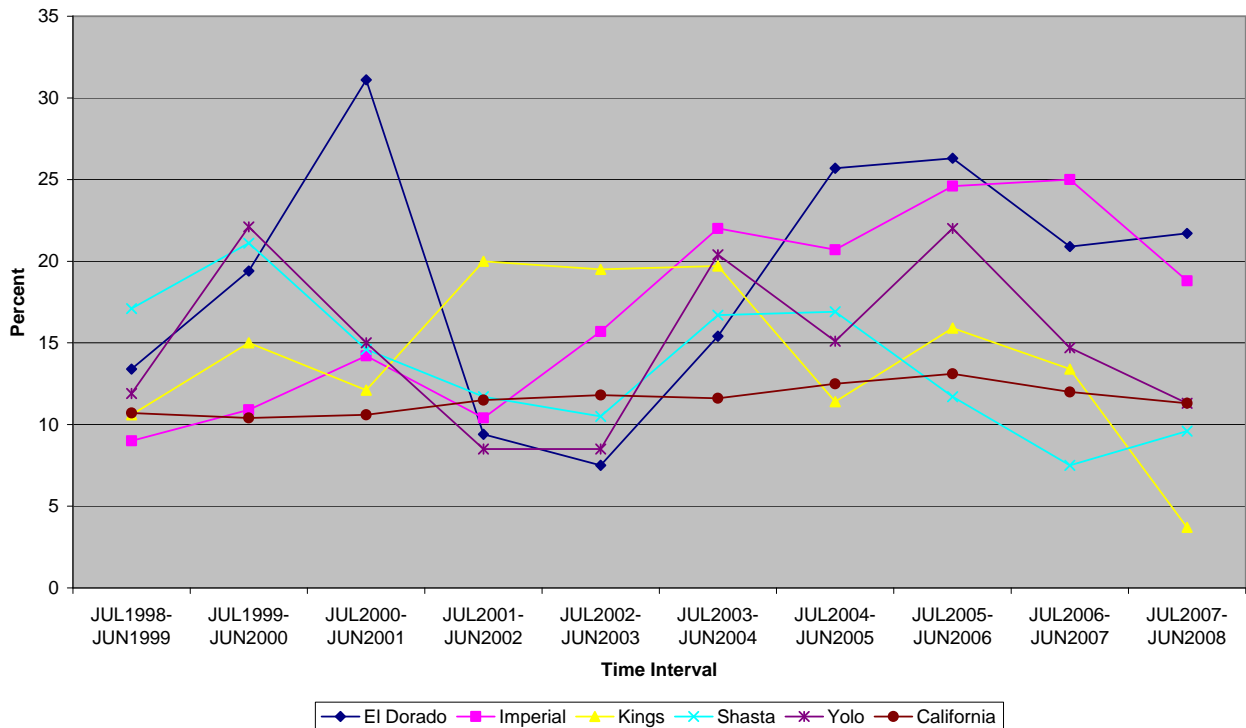
(Of all children discharged from foster care to reunification during the year, what percent reentered foster care in less than 12 months from the date of the earliest discharge to reunification during the year?)

**Direction of desired change:**

**( - ) Downward**

- The percentage of reentries into the child welfare system following reunification has been slightly increasing statewide.
- The percentage of reentries into the El Dorado County child welfare system following reunification has been marked by sharp increases and decreases since 1998.
- The percentage of reentries in El Dorado County is higher than the statewide rate and comparator counties, however the total number of specific cases (not shown) ranges from 4 to 35.

Percent reentering in less than 12 months  
Selected Subset: Episode Count: All Entries  
Selected Subset: Number of Days in Care: 8 days or more, 7 days or less



Agency type: child welfare

**Child Welfare Outcome:**

**Permanency**

**Federal Measure:**

**Adoption Within 24 Months (Exit Cohort)**

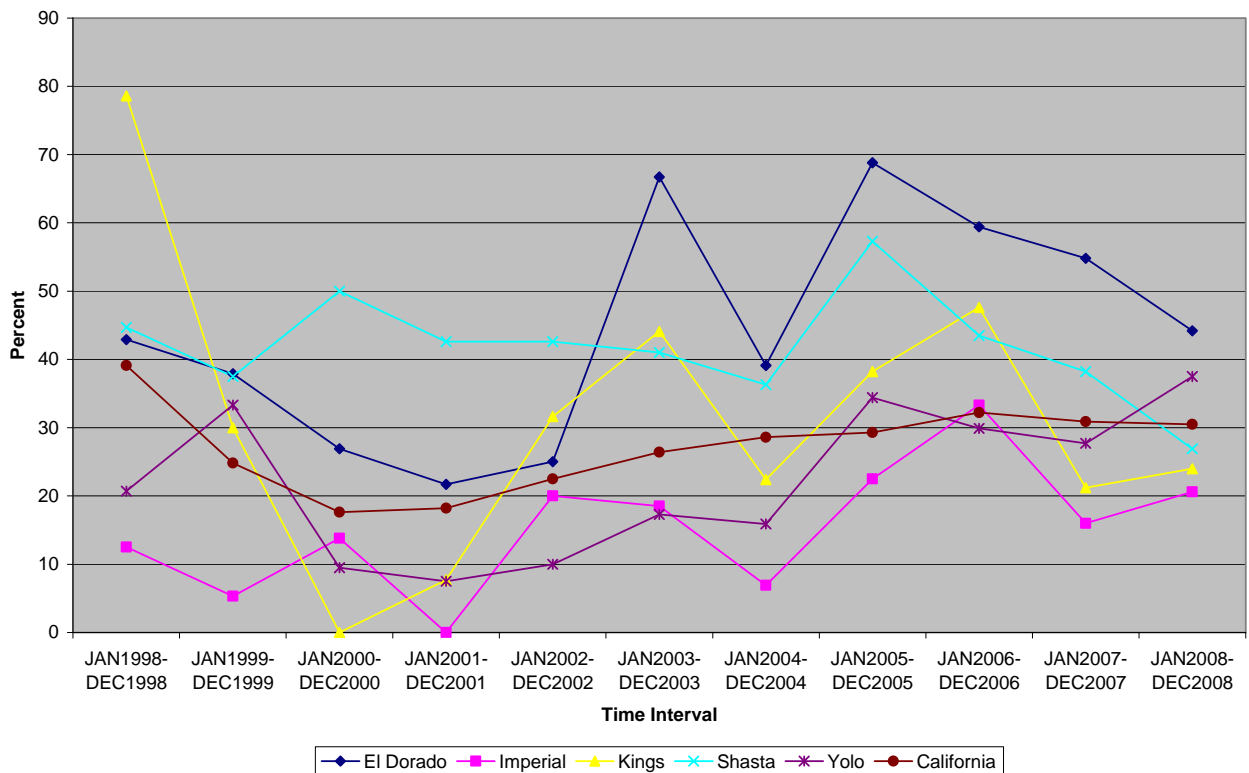
(Of all children discharged from foster care to a finalized adoption during the year, what percent were discharged in less than 24 months from the date of the latest removal from home?)

**Direction of desired change:**

**( + ) Upward**

- The percentage of children discharged from foster care to a finalized adoption within 24 months or less from the date of their last removal from home is increasing in El Dorado County.
- This rate in El Dorado County has consistently been above the trend statewide and in comparator counties.

**Percent exiting to adoption in less than 24 months**



Agency type: child welfare

**Child Welfare Outcome:**

**Permanency**

**Federal Measure:**

**Median Time to Adoption (Exit Cohort)**

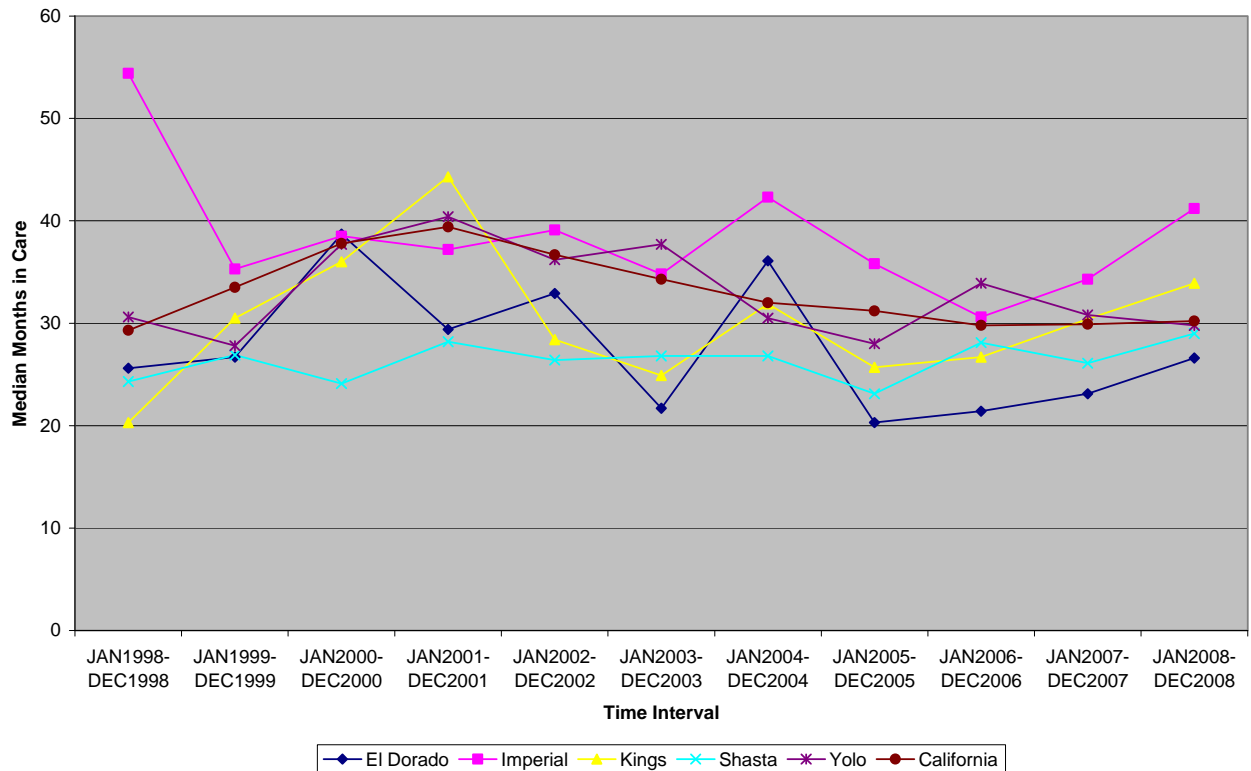
(Of all children discharged from foster care to a finalized adoption during the year, what was the median length of stay (in months) from the date of latest removal from home until the date of discharge to adoption?)

**Direction of desired change:**

**( - ) Downward**

- The median length of stay in the El Dorado County child welfare system from date of last removal to the date of discharge to adoption has decreased slightly in El Dorado County since 1998.
- The median length of stay has been increasing slightly since 2005 however, the rate is generally lower than the length of stay statewide and in comparator counties.

**Median time (months) from latest removal to adoption**



Agency type: child welfare

**Child Welfare Outcome:**

**Permanency**

**Federal Measure:**

**Adoption Within 12 months (17 months in care)**

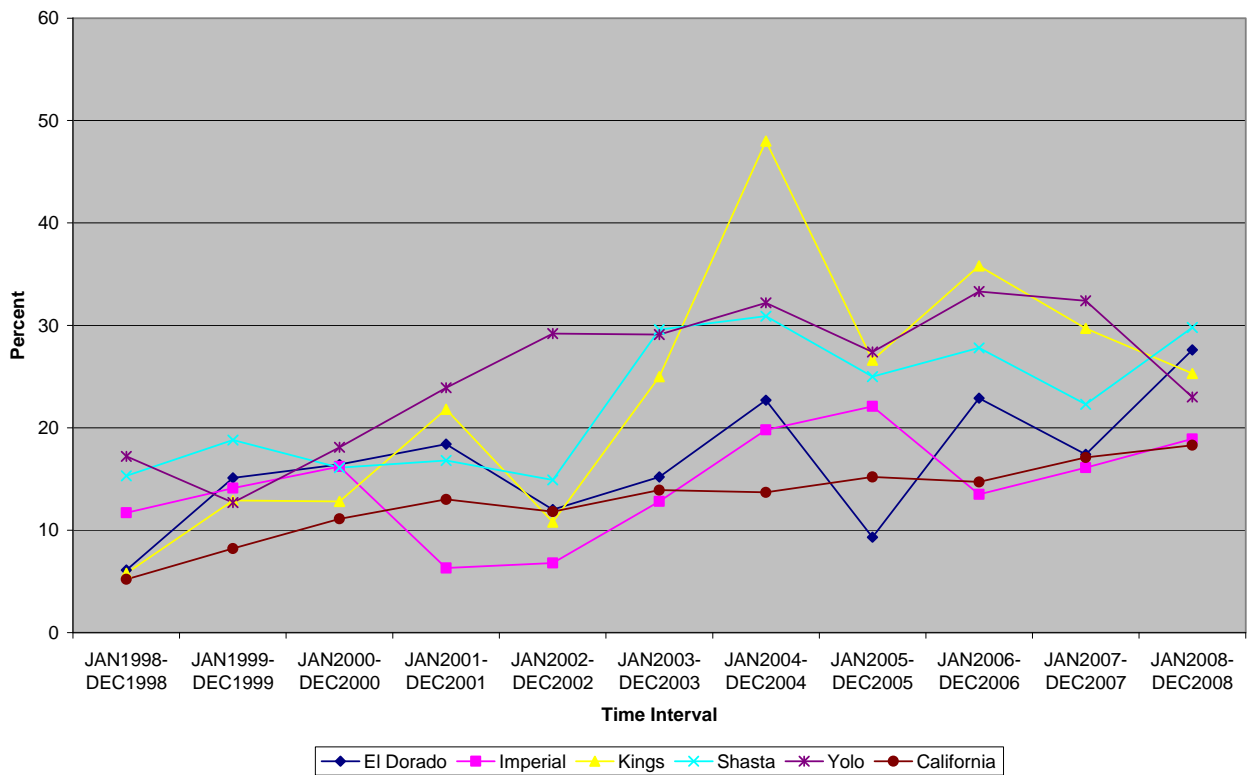
(Of all children in foster care for 17 continuous months or longer on the first day of the year, what percent were discharged to a finalized adoption by the last day of the year?)

**Direction of desired change:**

**( + ) Upward**

- The percentage of children in foster care 17 continuous months or longer on the first day of the year discharged to a finalized adoption by the last day of the year is increasing in El Dorado County.
- This rate in El Dorado County historically runs slightly above the statewide rate.

**Percent exiting to adoption by the last day of the year**



Agency type: child welfare

**Child Welfare Outcome:**

**Permanency**

**Federal Measure:**

**Legally Free Within 6 months (17 months in care)**

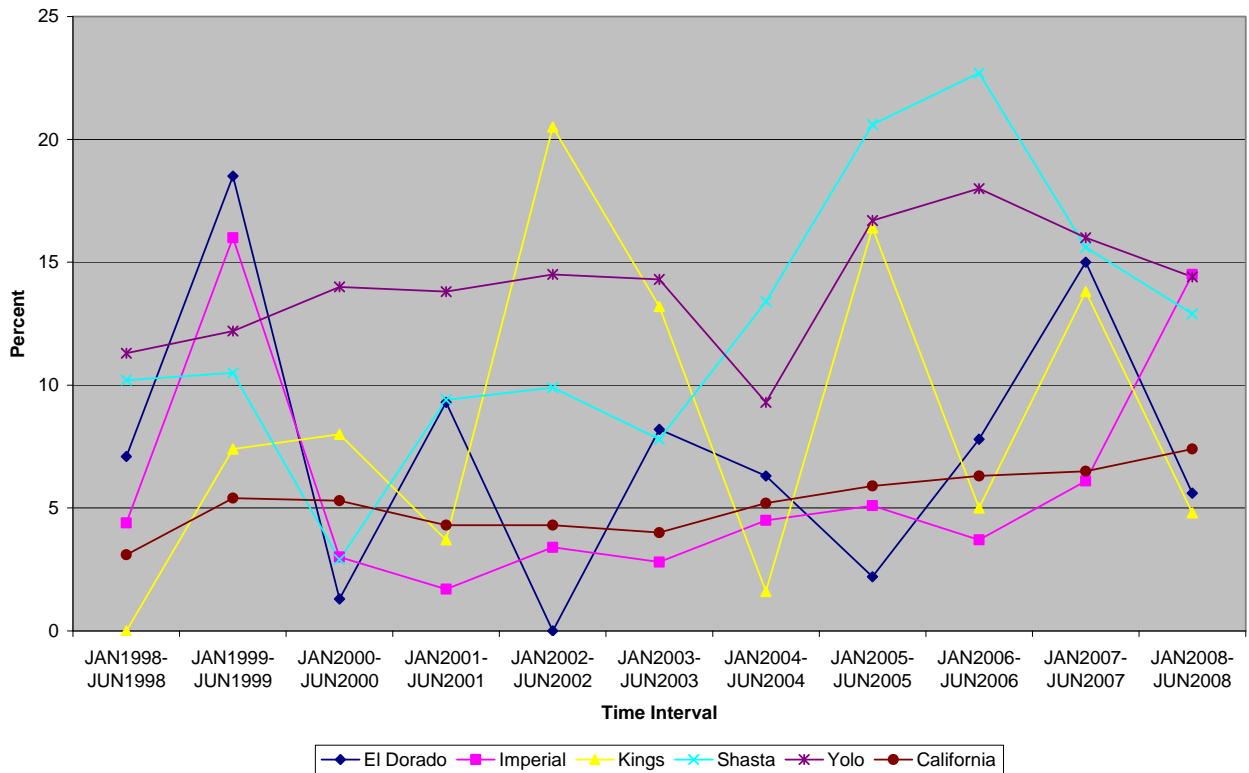
(Of all children in foster care for 17 continuous months or longer and not legally free for adoption on the first day of the year, what percent became legally free within the next 6 months?)

**Direction of desired change:**

**( + ) Upward**

- Like most other comparator counties, the percentage of foster children in El Dorado County in care for 17 months or longer who were not legally free for adoption on the first day of the year but became legally free within 6 months has been erratic, and is currently near the statewide average.

**Percent who became legally free within 6 months**



Agency type: child welfare

**Child Welfare Outcome:**

**Permanency**

**Federal Measure:**

**Adoption Within 12 Months (Legally Free)**

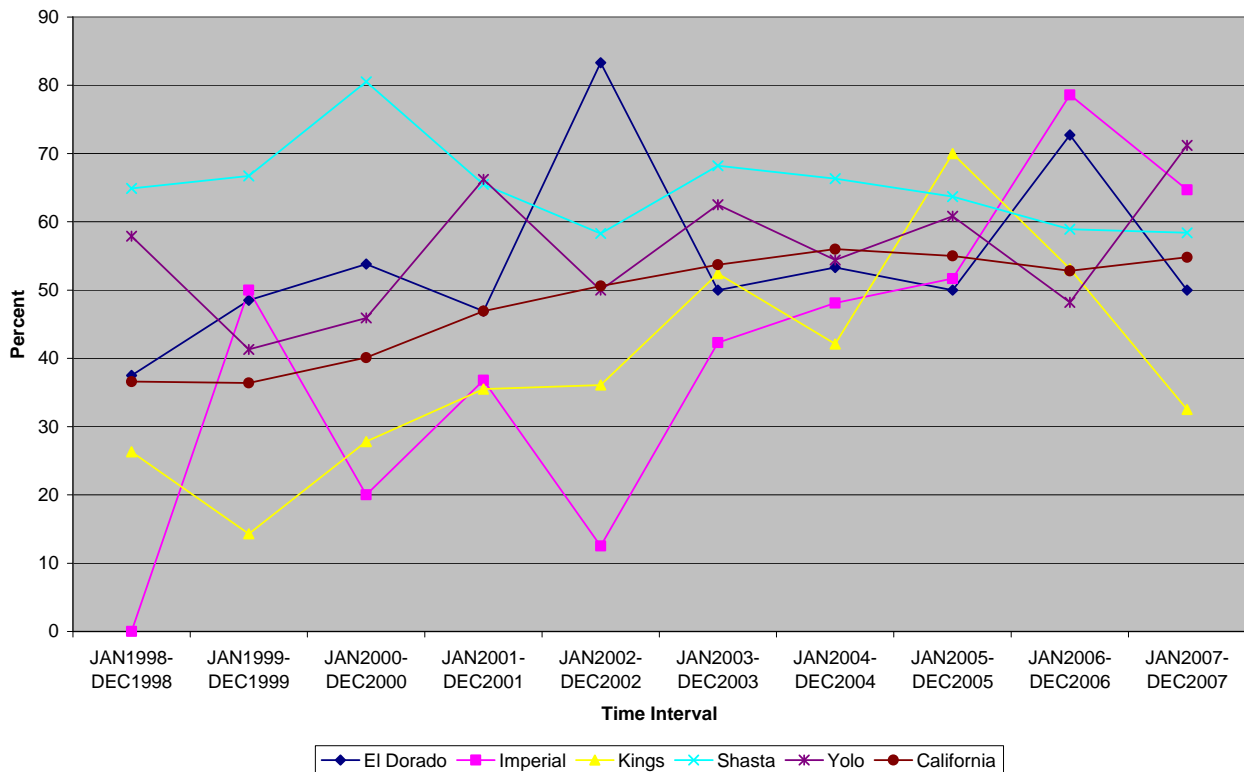
(Of all children in foster care who became legally free for adoption during the year, what percent were then discharged to a finalized adoption in less than 12 months?)

**Direction of desired change:**

**( + ) Upward**

- The percentage of El Dorado County children in foster care who became legally free for adoption and ultimately discharged to a finalized adoption has increased since 1998.

**Percent exiting to adoption in less than 12 months**



Agency type: child welfare



**Child Welfare Outcome:**

**Permanency**

**Federal Measure:**

**Exits to Permanency (24 months in care)**

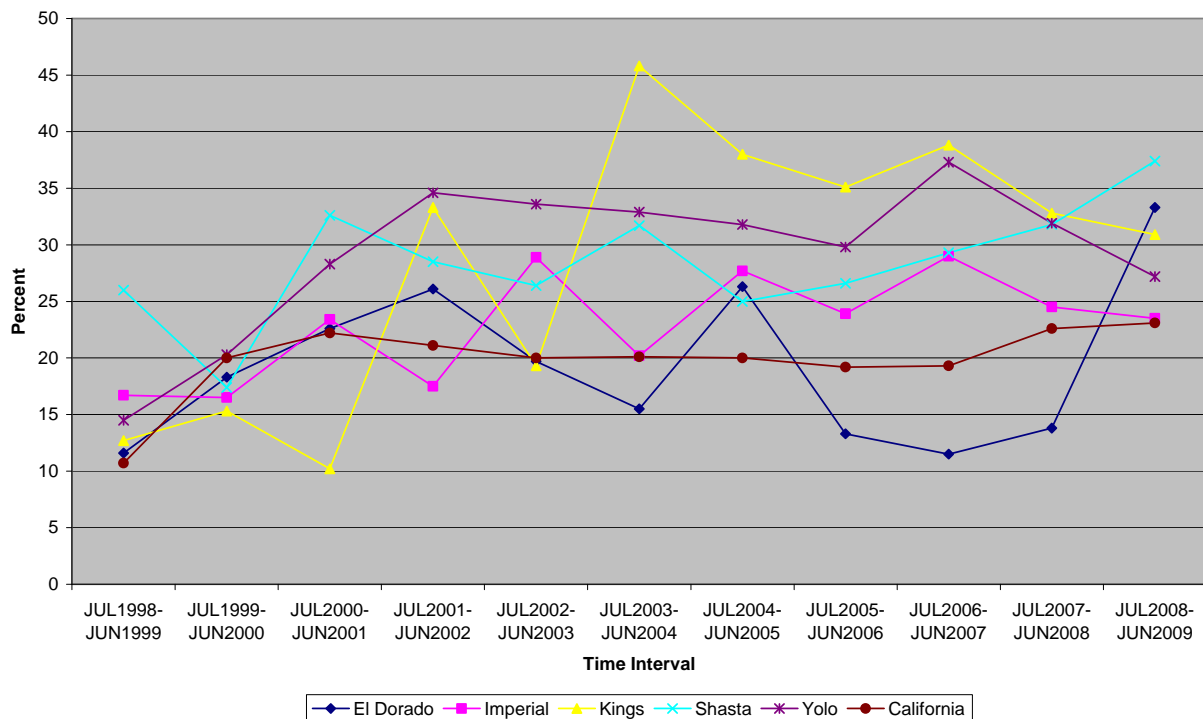
(Of all children in foster care for 24 months or longer on the first day of the year, what percent were discharged to a permanent home by the end of the year and prior to turning 18?)

**Direction of desired change:**

**( + ) Upward**

- The percentage of children in foster care for 24 months or longer discharged to permanent home by the end of the year and prior to turning 18 is on an upward trend in El Dorado County.
- The percentage of children discharged to a permanent home and prior to turning 18 in El Dorado County has been historically lower than the rate in comparator counties, but has rapidly increased in recent years and is above the state average.

**Percent exiting to permanency by the end of the year and before age 18  
Time in Care: 24 months or longer**



Agency type: child welfare

**Child Welfare Outcome:**

**Permanency**

**Federal Measure:**

**Exits to Permanency (Legally Free)**

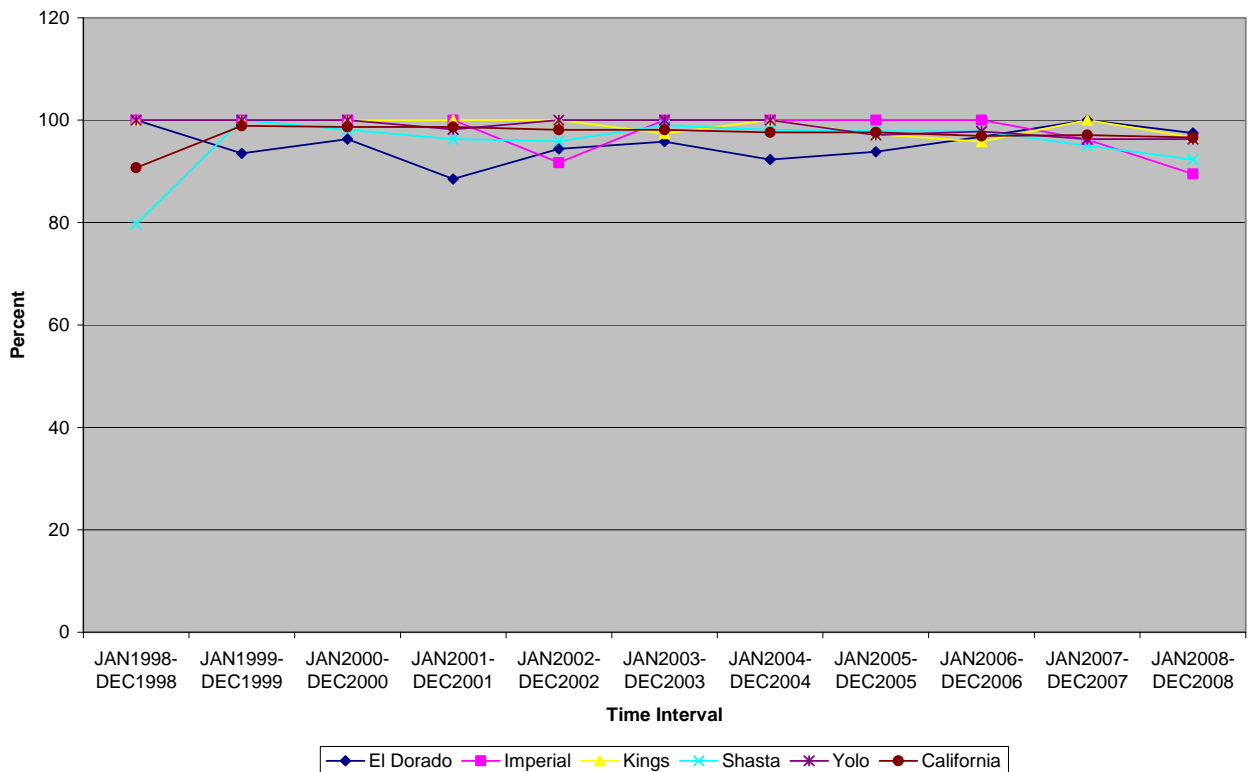
(Of all children discharged from foster care during the year who were legally free for adoption, what percent were discharged to a permanent home prior to turning 18?)

**Direction of desired change:**

**( + ) Upward**

- The percentage of children in El Dorado County discharged from foster care during the year who were legally free for adoption and discharged to a permanent home prior to turning 18 is consistent with the trend statewide and in comparator counties.

**Percent exiting to permanency before age 18**



Agency type: child welfare

**Child Welfare Outcome:**

**Permanency**

**Federal Measure:**

**In Care 3+ years (Emancipated Or Age 18 In Care)**

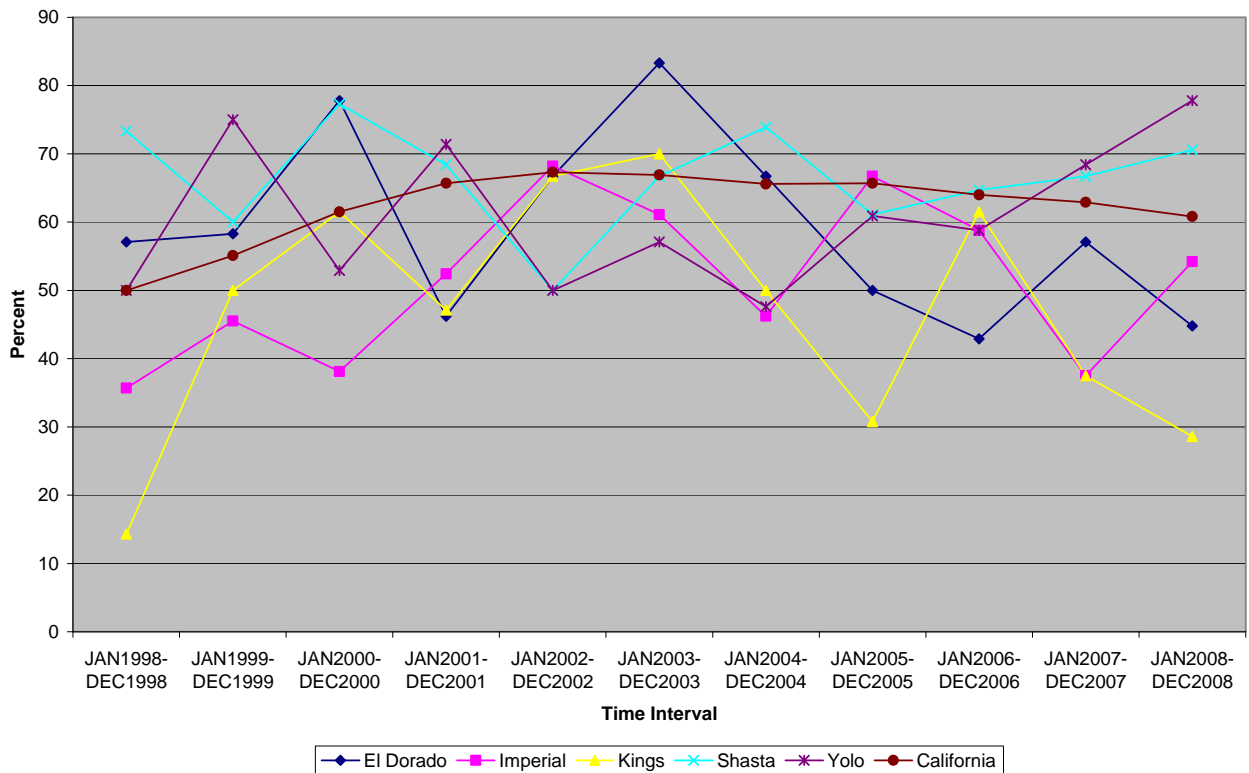
(Of all children in foster care during the year who were either discharged to emancipation or turned 18 while still in care, what percent had been in foster care for 3 years or longer?)

**Direction of desired change:**

**( - ) Downward**

- The percentage of children in El Dorado County in foster care during the year who were either emancipated or turned 18 while still in care has declined since 1998.
- The percentage of children in El Dorado County in foster care who were either emancipated or turned 18 while in care is significantly lower than the statewide trend.

**Percent in Care 3 Years or Longer (Emancipated Or Age 18 In Care)**



Agency type: child welfare

**Child Welfare Outcome:**

**Permanency**

**Federal Measure:**

**Placement Stability (8 Days to 12 Months In Care)**

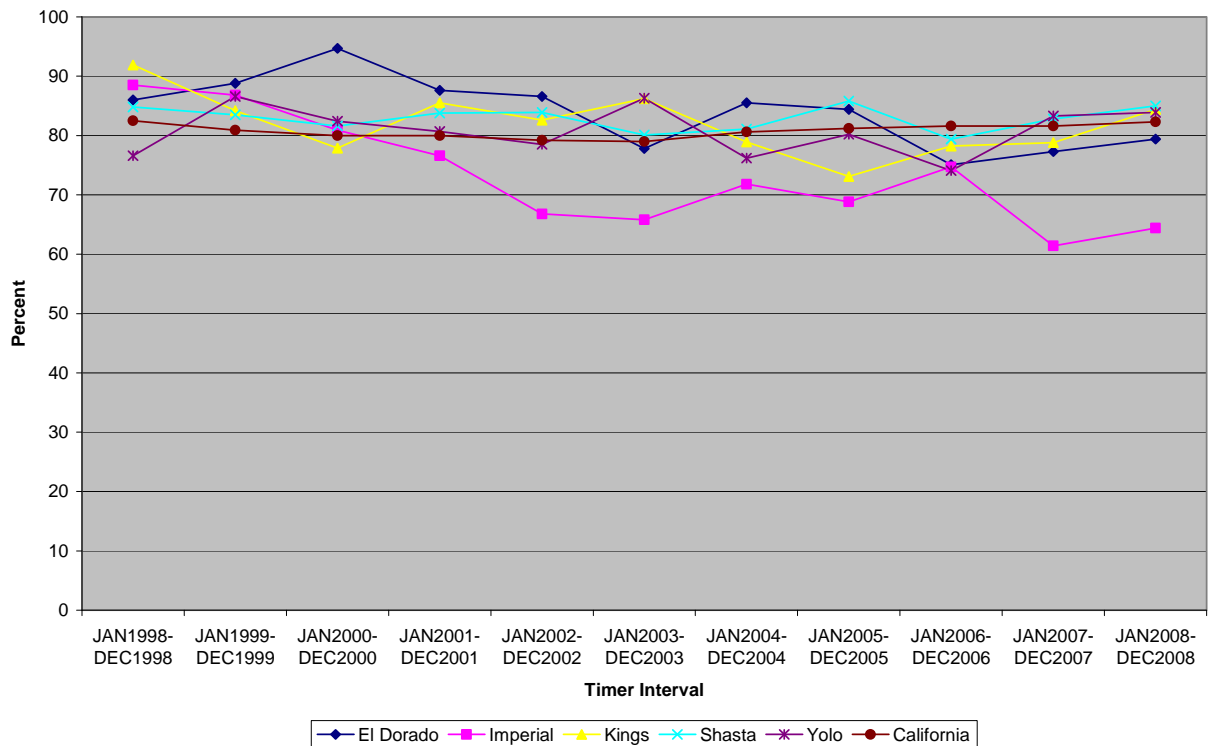
(Of all children in foster care during the year what percent had two or fewer placement settings?)

**Direction of desired change:**

**( + ) Upward**

- The percentage of children in foster care during the year with two or fewer placements has decreased slightly since 1998.
- At 79% El Dorado County's percentage of children in foster care with two or fewer placements is slightly below but near the rate statewide and in most comparator counties.

**Percent with two or fewer placements (8 Days to 12 Months in Care)**



Agency type: child welfare

**Child Welfare Outcome:**

**Permanency**

**Federal Measure:**

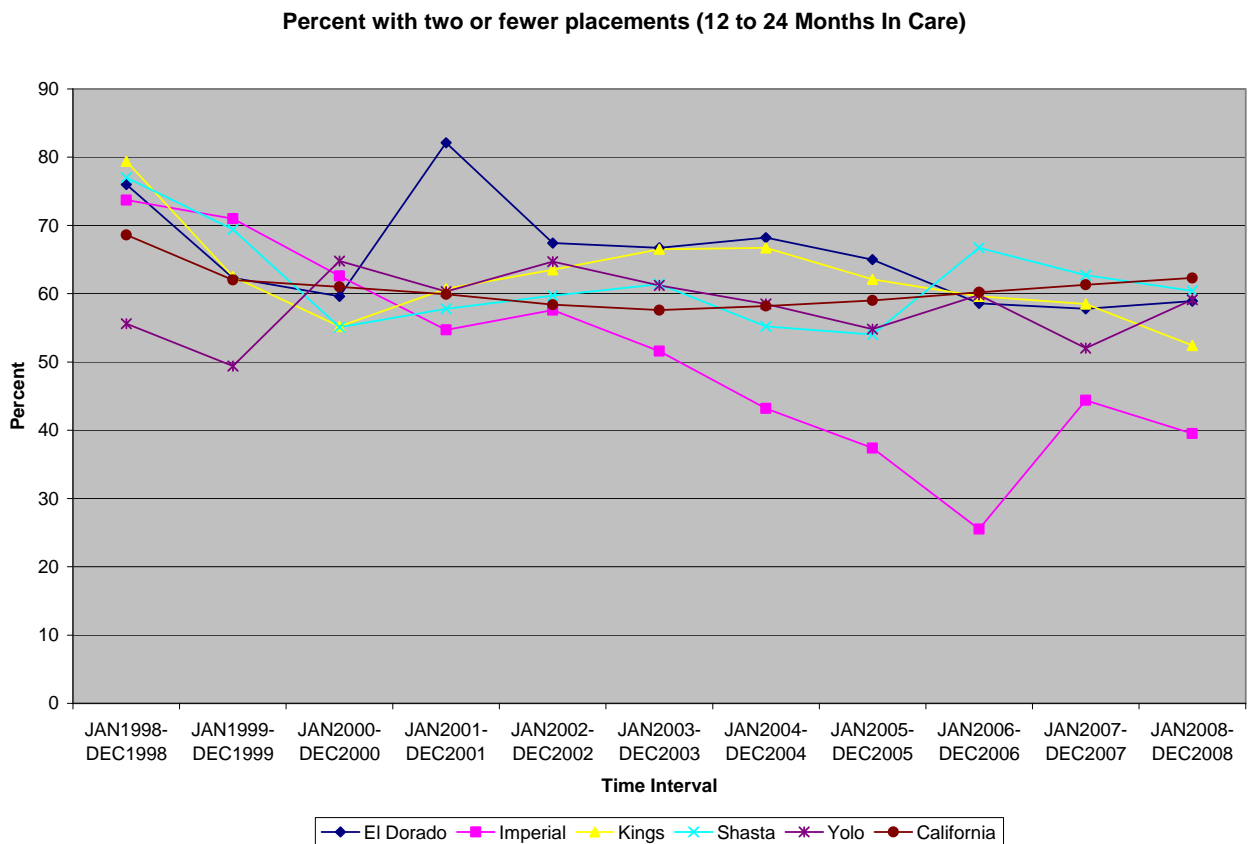
**Placement Stability (12 to 24 Months In Care)**

(Of all children in foster care during the year what percent had two or fewer placement settings?)

**Direction of desired change:**

**( + ) Upward**

- The percentage of children in foster care with 12 to 24 months in care during the year with two or fewer placements has decreased since 1998 and is currently slightly below the statewide rate.



Agency type: child welfare

**Child Welfare Outcome:**

**Permanency**

**Federal Measure:**

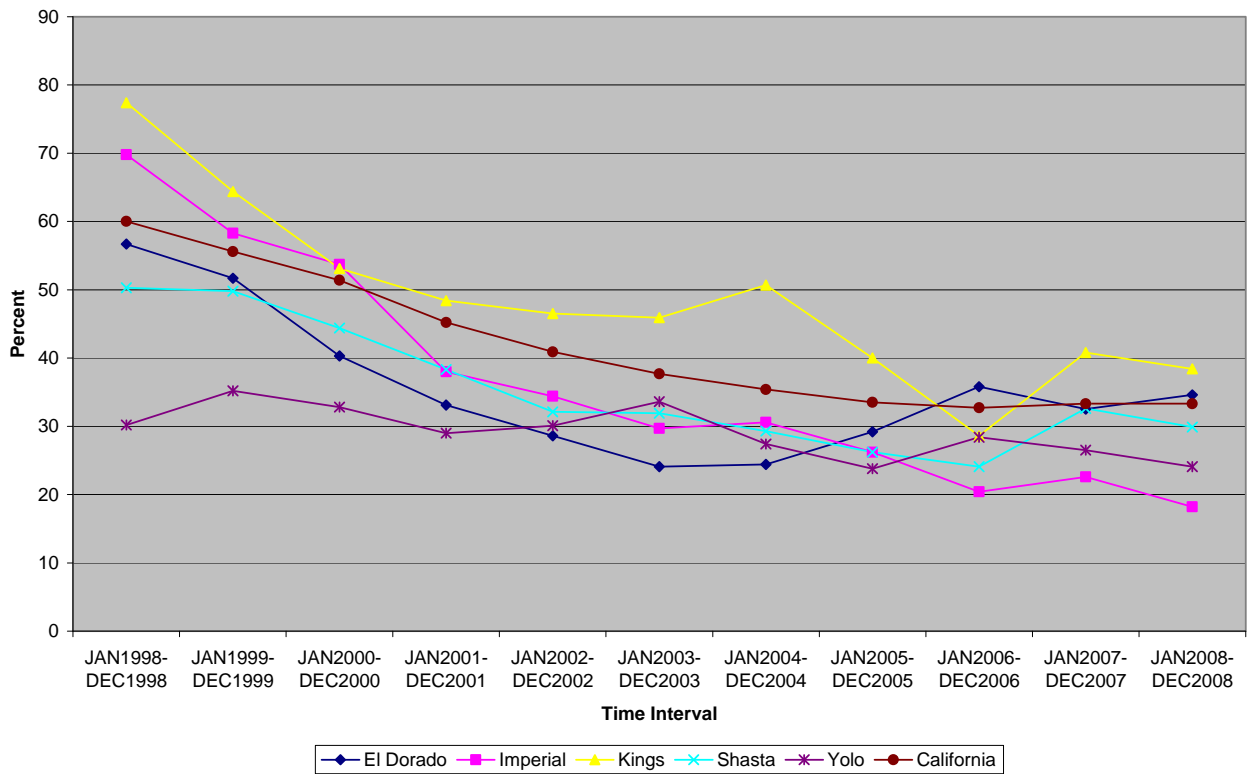
**Placement Stability (At Least 24 Months In Care)**  
(Of all children in foster care during the year what percent had two or fewer placement settings?)

**Direction of desired change:**

**( + ) Upward**

- The percentage of children in foster care with at least 24 months in care during the year with two or fewer placements has decreased significantly since 1998.
- Overall, the number of placement settings for children in foster care increases as time in care increases.

**Percent of children with two or fewer placements (At Least 24 Months In care)**



Agency type: child welfare

**Child Welfare Outcome:**

**Permanency**

**State Measure:**

**Siblings (All or Some)**

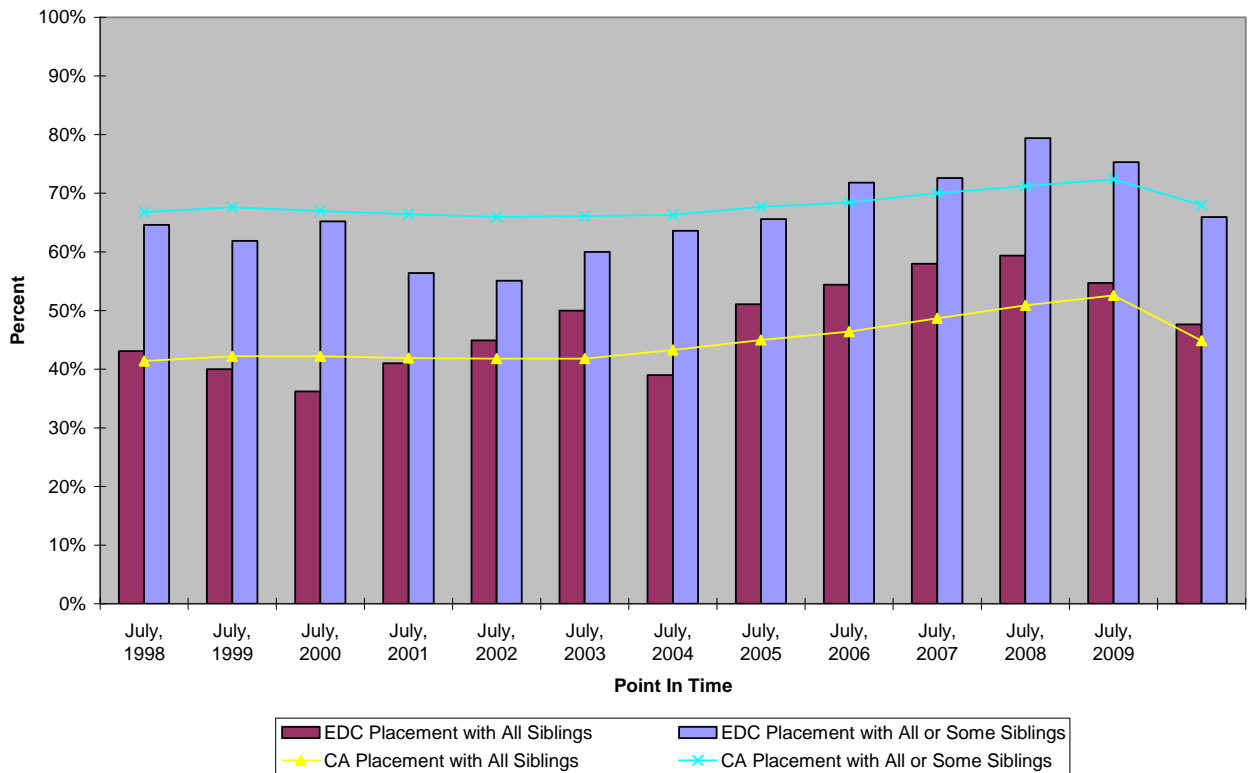
(Of all children placed in Child Welfare supervised foster care, what percentage are placed with either 'all' or 'all or some' of their siblings?)

**Direction of desired change:**

**( + ) Upward**

- In El Dorado County, the percentage of children placed with either all or some of their siblings while in supervised foster care has fluctuated but is trending upward.
- The trend for placement with siblings in El Dorado County is consistent with the statewide trend.

**Percent of children placed with siblings while in foster care**



**Child Welfare Outcome:**

**Permanency**

**State Measure:**

**Entries First Placement (Relative)**

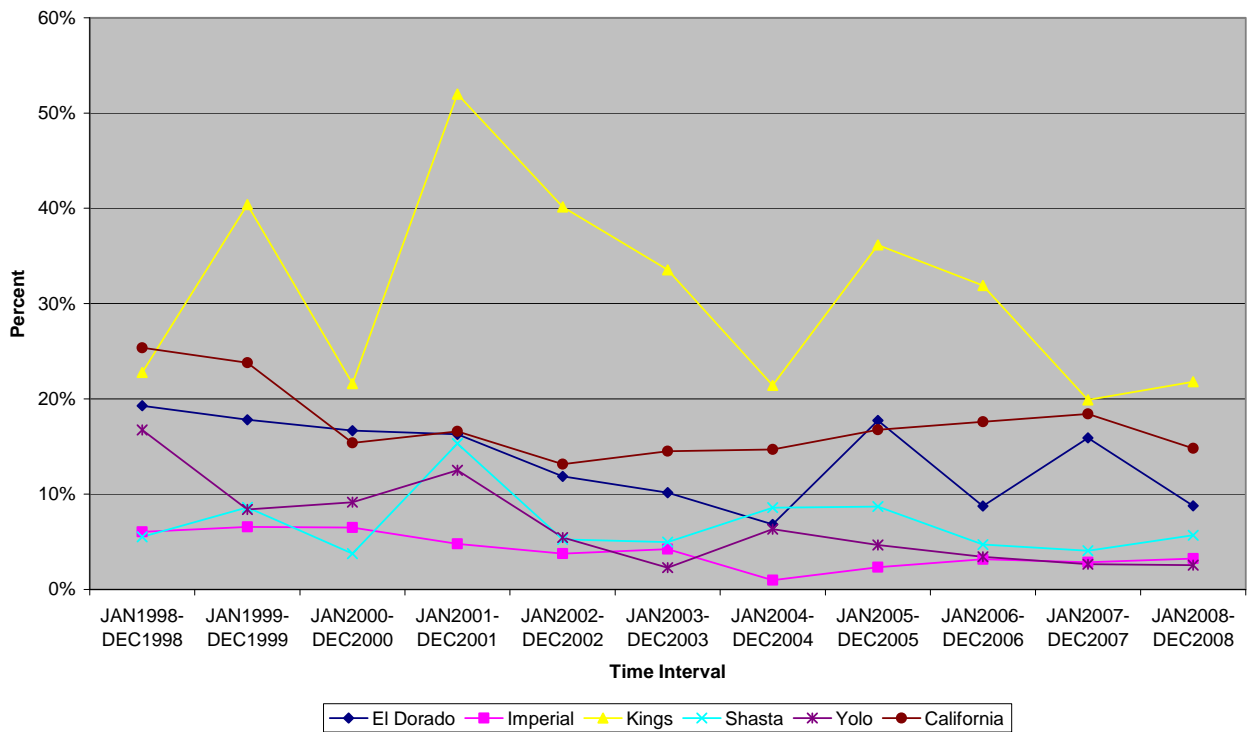
(What percentage of children are placed with a relative upon first entry into foster care?)

**Direction of desired change:**

**( + ) Upward**

- The percentage of children placed with a relative upon first entry into foster care is decreasing in El Dorado County and in most comparator counties.

Percent of children placed with a relative upon first entry into foster care  
 Selected Subset: Episode Count: First Entry\*  
 Selected Subset: Number of Days in Care: 8 days or more, 7 days or less



\* Multiple entries by the same child during time period not counted

Agency type: child welfare



**Child Welfare Outcome:**

**Permanency**

**State Measure:**

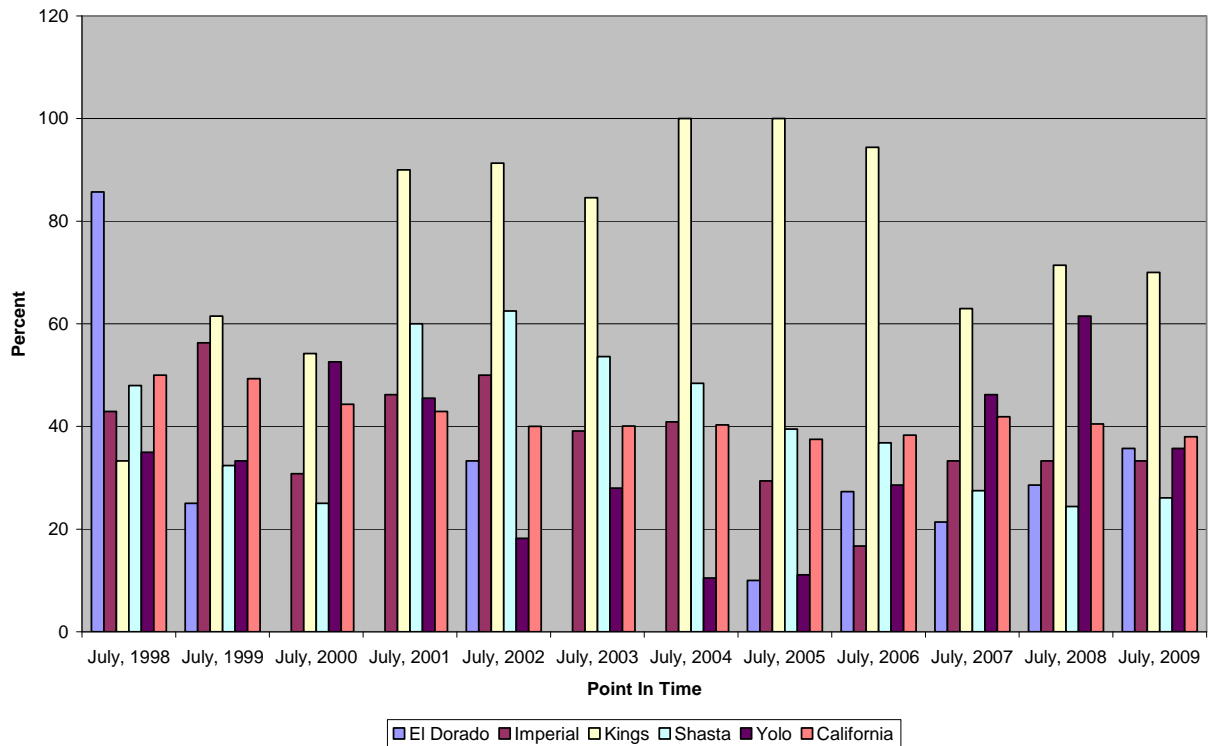
**Native American Children Placed With Family**

(What percentage of Indian Child Welfare Act eligible children are placed with a relative upon first entry into foster care?)

**Direction of desired change:**

**( + ) Upward**

**Percent of ICWA Eligible Children with Relatives**



Agency type: child welfare

# WELL-BEING OUTCOMES AND MEASURES

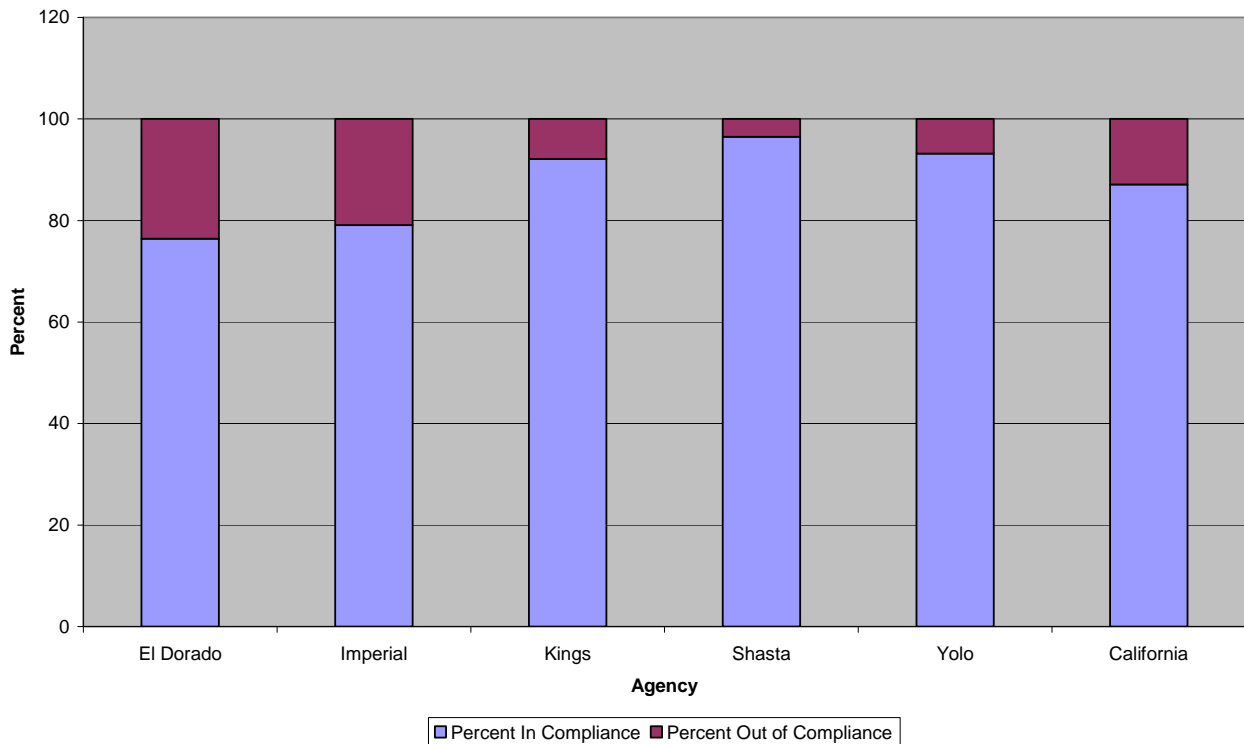
**Child Welfare Outcome:** Well-being

**State Measure:** **Timely Health Exams**  
(What percent of children are meeting the schedule for Child Health and Disability Prevention (CHDP) and Division 31 medical exams?)\*

**Direction of desired change:** ( + ) Upward

- Data from the last available quarter indicates that El Dorado County was slightly behind other counties and the statewide rate for children receiving timely health exams.

**Percent of children in child welfare system receiving timely health exams  
April-June 2009**



\* Excludes:

- All non-child welfare department placements (probation, etc.)
- Placement episodes less than 31 days
- Children in placement homes outside of California
- Children not in a placement (no runaway's or open episode/closed OHP)
- Non-foster care placements (NFC\_PLCT table)
- Nondependent Legal Guardians:
  - Placement Authority not in codes: 1409,1410,1411,1412 and 1413

**Child Welfare Outcome:**

**Well-being**

**State Measure:**

**Timely Dental Exams**

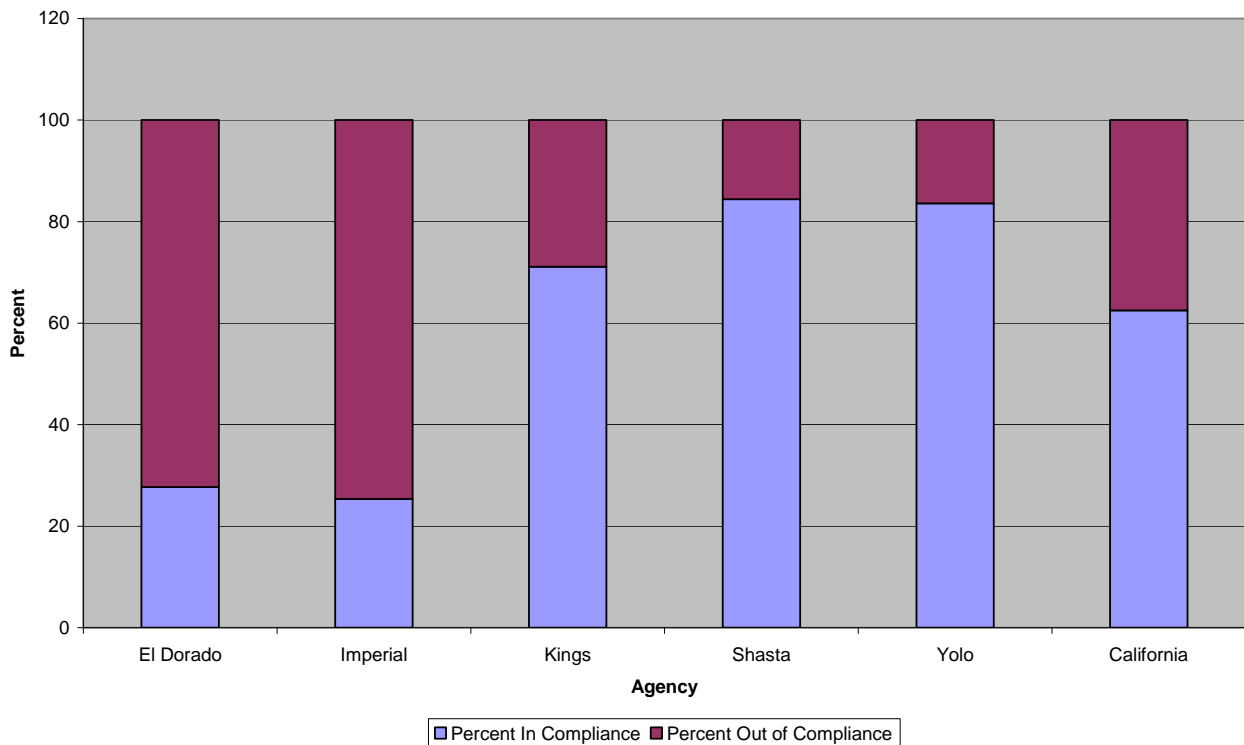
(What percent of children are meeting the schedule for Child Health and Disability Prevention (CHDP) and Division 31 dental exams?)\*

**Direction of desired change:**

**( + ) Upward**

- Data from the last available quarter indicates that El Dorado County was significantly behind other counties and the statewide rate for children receiving timely dental exams.

**Percent of children receiving timely dental exams  
April-June 2009**



\* Excludes:

- All non-child welfare department placements (probation, etc.)
- Placement episodes less than 31 days
- Children in placement homes outside of California
- Children not in a placement (no runaway's or open episode/closed OHP)
- Non-foster care placements (NFC\_PLCT table)
- Nondependent Legal Guardians:
  - Placement Authority not in codes: 1409,1410,1411,1412 and 1413

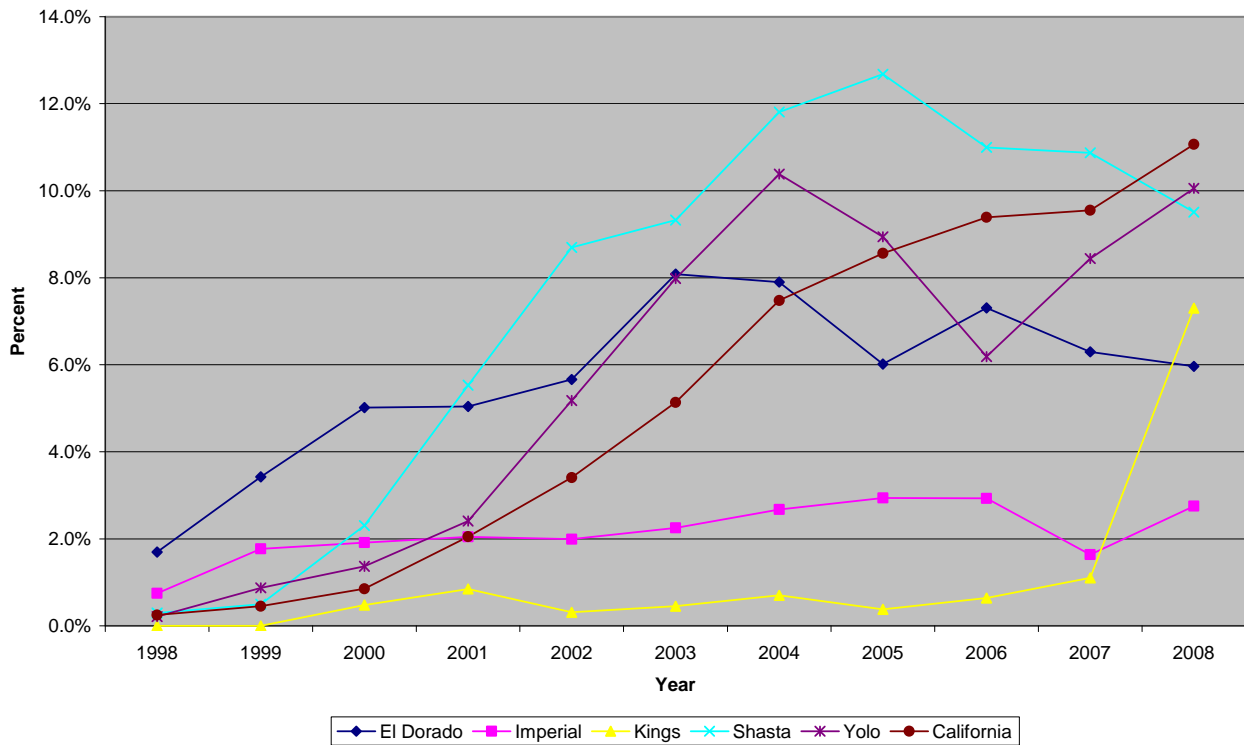
**Child Welfare Outcome:** Well-being

**State Measure:** Authorized for psychotropic medications  
(What percent of children in foster care with a court order or parental consent that authorizes the child to receive psychotropic medication?)

**Direction of desired change:** (N/A)

- The percentage of children in foster that have been authorized to receive psychotropic medication through a court order or through parental consent is relatively small in El Dorado County, currently at 6%, which represents 75 out of 1,258 children.
- El Dorado County's rate is less than the statewide rate and is lower than most comparator counties.

**Percent of children authorized for psychotropic medication with a court order or parental consent**



**Child Welfare Outcome:**

**Well-being**

**State Measure:**

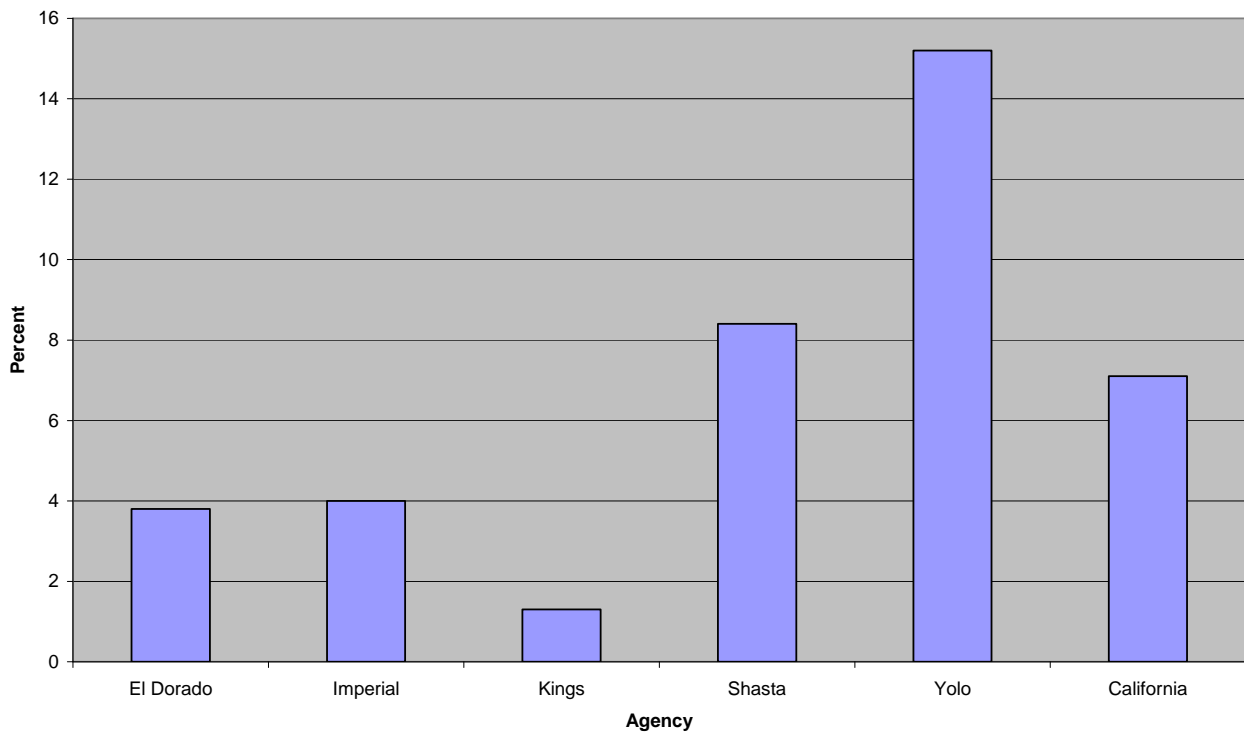
**Individualized Education Plans documented**

(What percentage of children in out-of-home (OHP) placements have ever had an IEP?)\*

**Direction of desired change:**

**(N/A)**

**Percent of children in placement that have ever had an IEP  
April-June 2009**



\* Includes:

- Child Welfare Department supervised children in an open case and open OHP placement during the quarter (the case must begin before the end of the quarter and the case must end after the beginning of the quarter or it is open)
- Placement episodes lasting 31 or more days
- Minors placed in California

Excludes

- Exclude nondependent legal guardianship placements
- Exclude ICPC placements (in or out)
- Exclude children younger than 3 years old
- Exclude children who turned 3 years old 31 days or less before the end of the quarter
- Exclude children 19 years of age or older

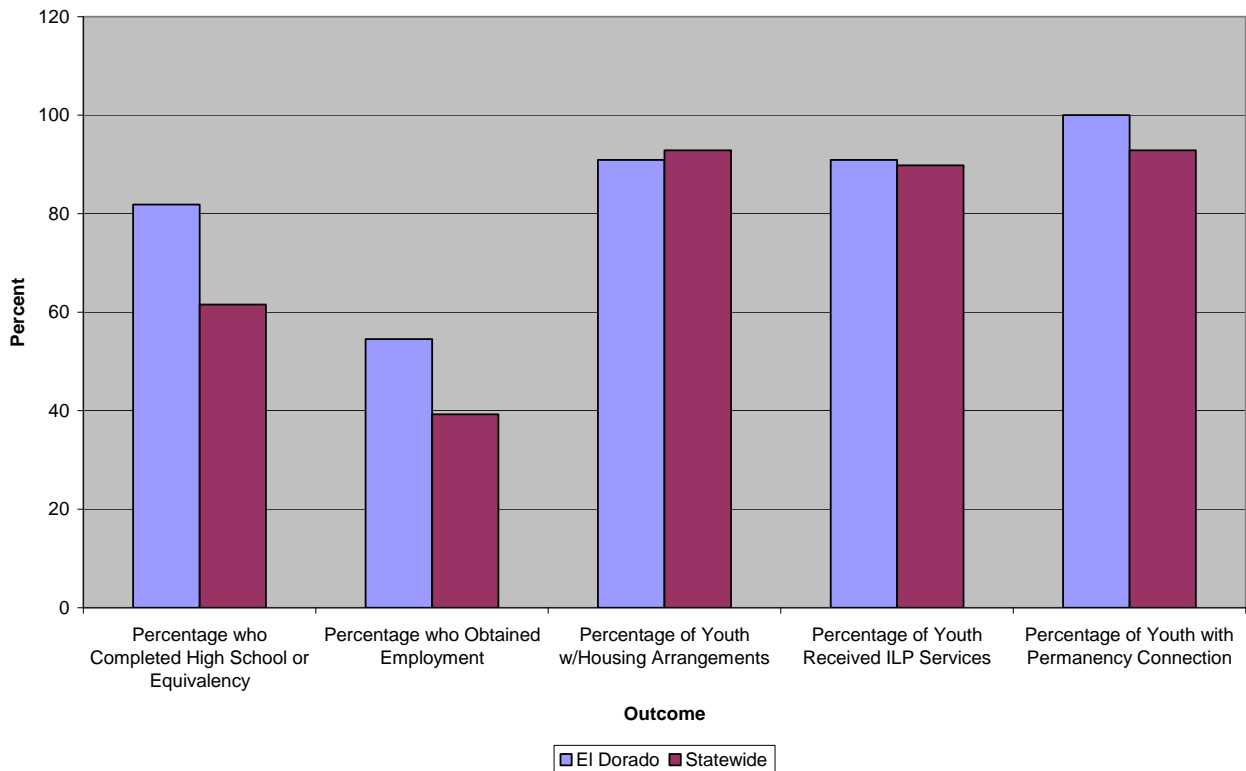
**Child Welfare Outcome:** Well-being

**State Measure:** **Exit Outcomes Youth Aging Out of Foster Care**  
(What percentage of youth emancipating from child welfare supervised foster care had the following exit outcomes?)

**Direction of desired change:** ( + ) Upward

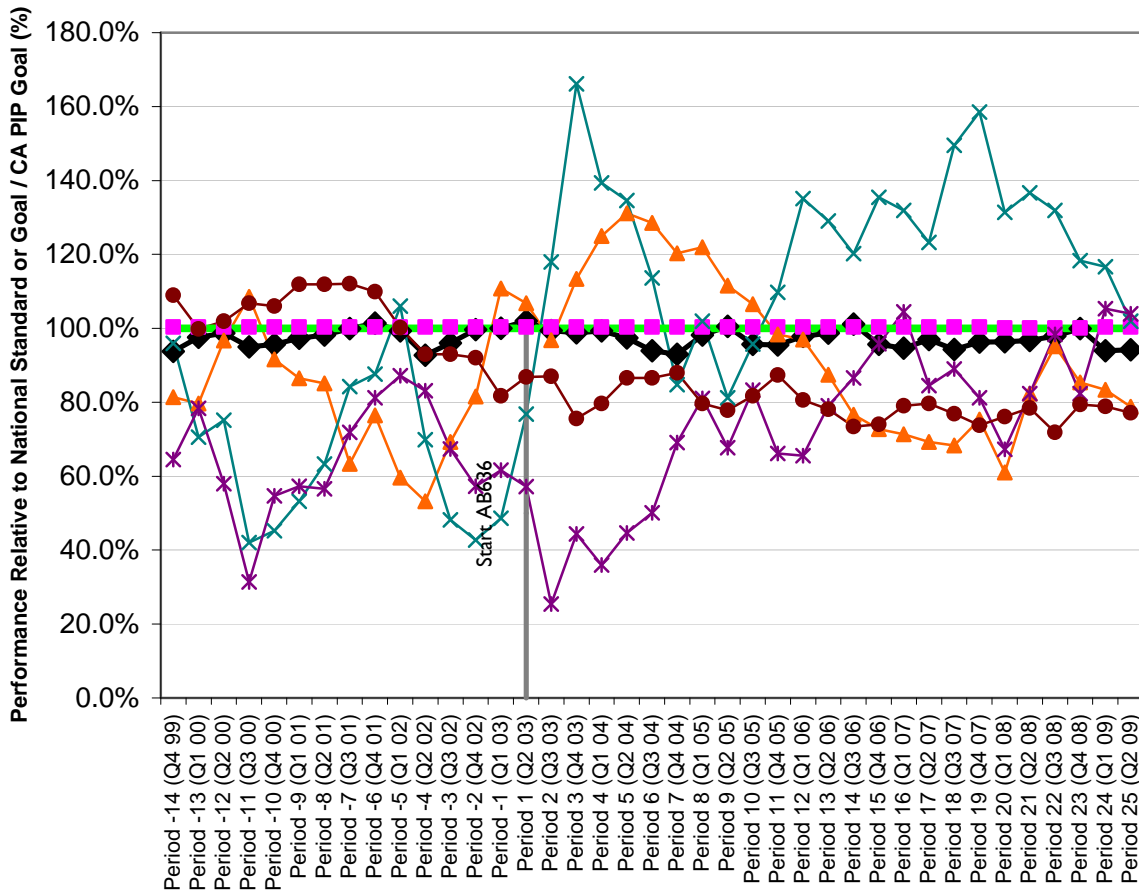
- Data from the last available quarter indicates that exit outcomes for youth aging out of foster care in El Dorado County are generally better than the statewide trend.

**Exit Outcomes for Youth Aging Out of Foster Care April-June 2009**



# El Dorado County Performance Relative to National Standard as of Q2 2009

## Relative Performance



S1\_1
  S2\_1
  Composite\_1
  Composite\_2
  Composite\_3
  Composite\_4
  100%
  Start AB636

- S1\_1: No Recurrence Of Maltreatment
- S2\_1: No Maltreatment In Foster Care
- Composite\_1: Reunification Composite
- Composite\_2: Adoption Composite
- Composite\_3: Long Term Care Composite
- Composite\_4: Placement Stability Composite