



EL DORADO COUNTY COMMUNITY WILDFIRE PROTECTION STRATEGY

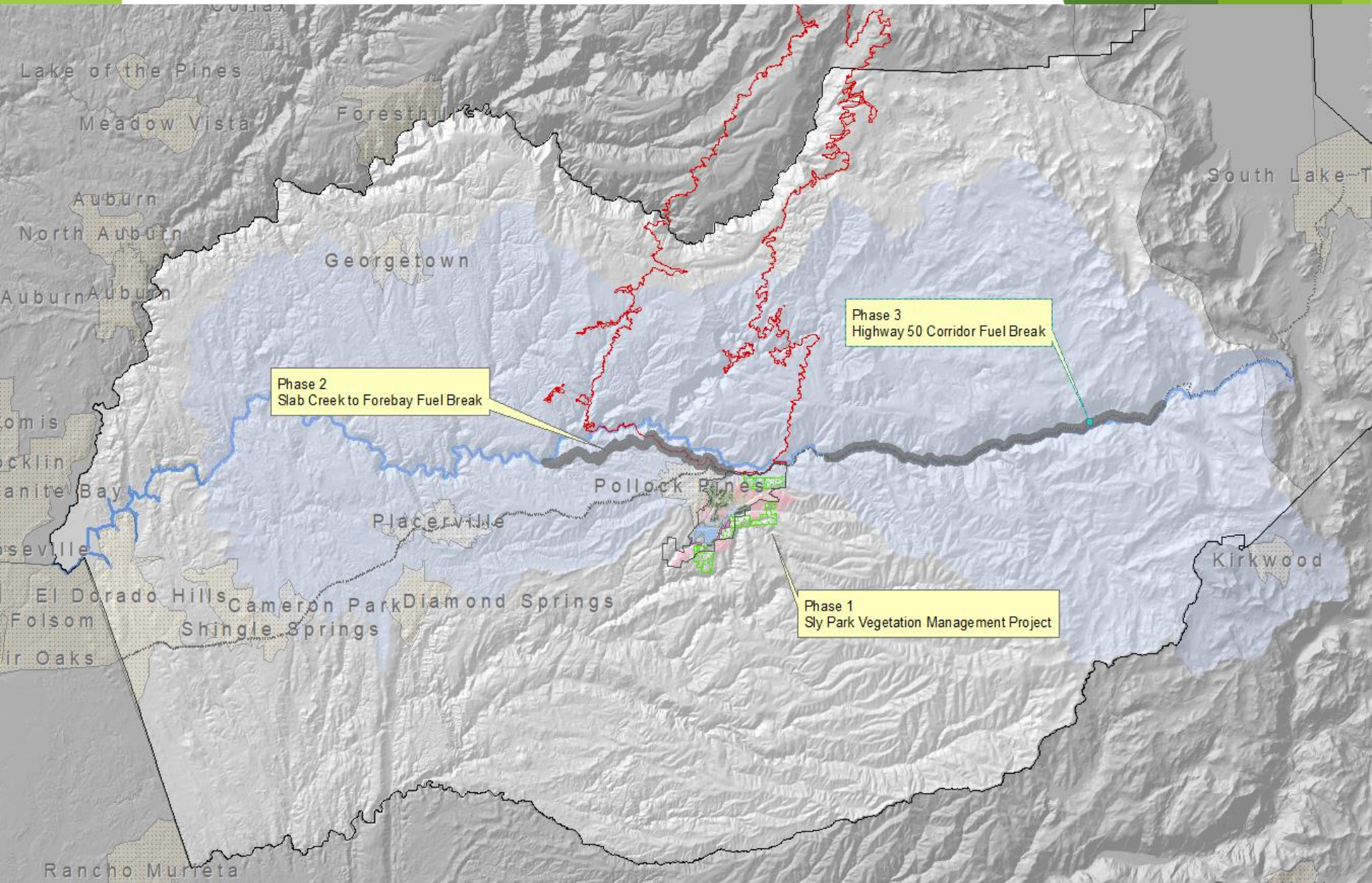
DECEMBER 11, 2018



FIRE ADAPTED 50

- * Sly Park Vegetation Management Project
- * Camino/Pollock Pines shaded fuel break –
Slab Creek Dam to Pony Express Trail
along the canyon rim
- * Highway 50 shaded fuel break –
Icehouse Road to Echo Summit







GOALS

Restoring and maintaining resilient landscapes –Landscapes across all jurisdictions are resilient to fire related disturbances in accordance with management objectives.

Creating fire-adapted communities – Human populations and infrastructure can withstand a wildfire without loss of life or property.

Responding to Wildfires –All jurisdictions participate in making and implementing safe, effective, and efficient risk-based fire management decisions.





HOW?

Collaboration



Interagency Agreements



Good Neighbor authority



Cohesive Strategy



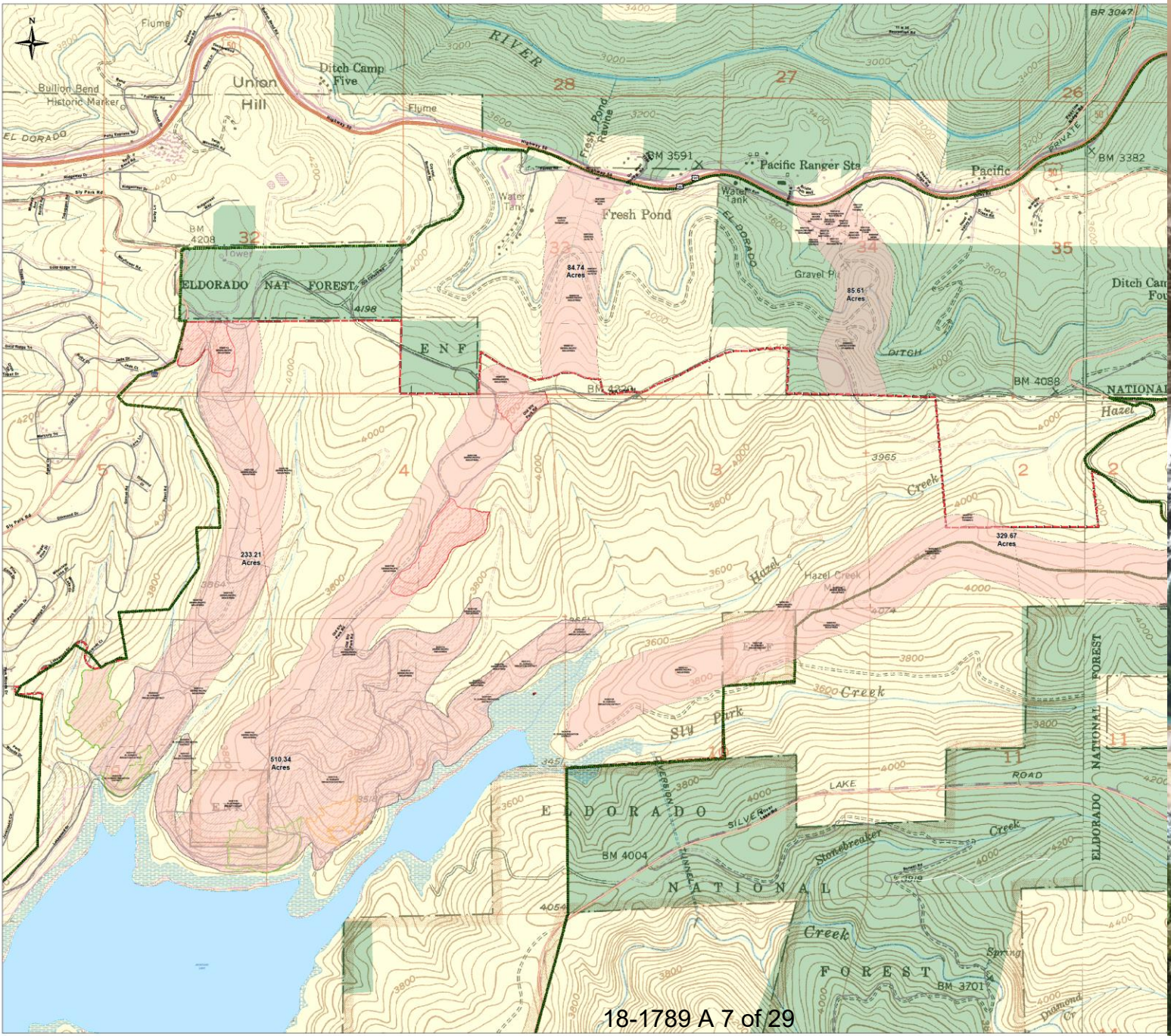
Grants



Matching Contributions








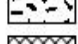














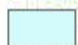
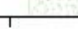


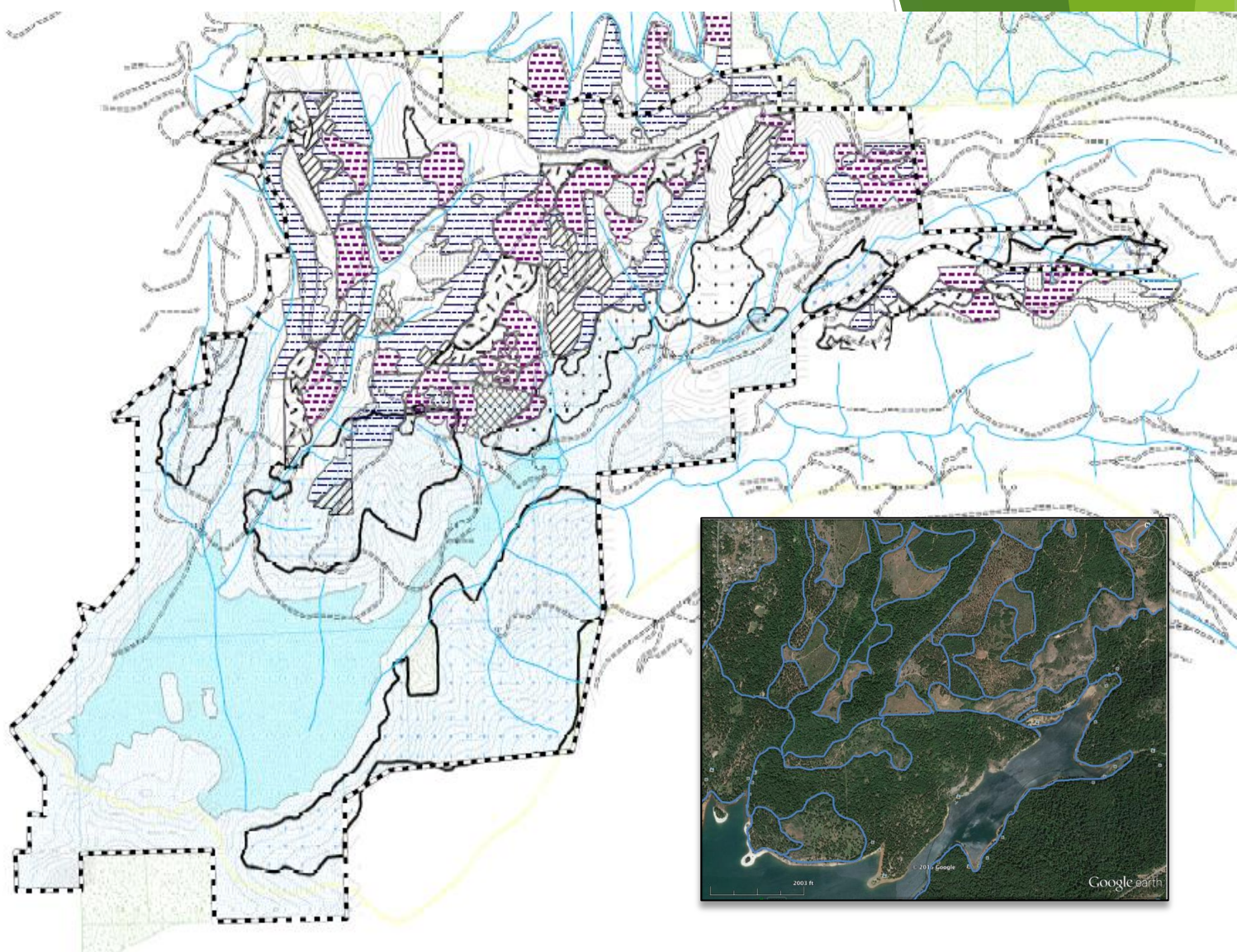




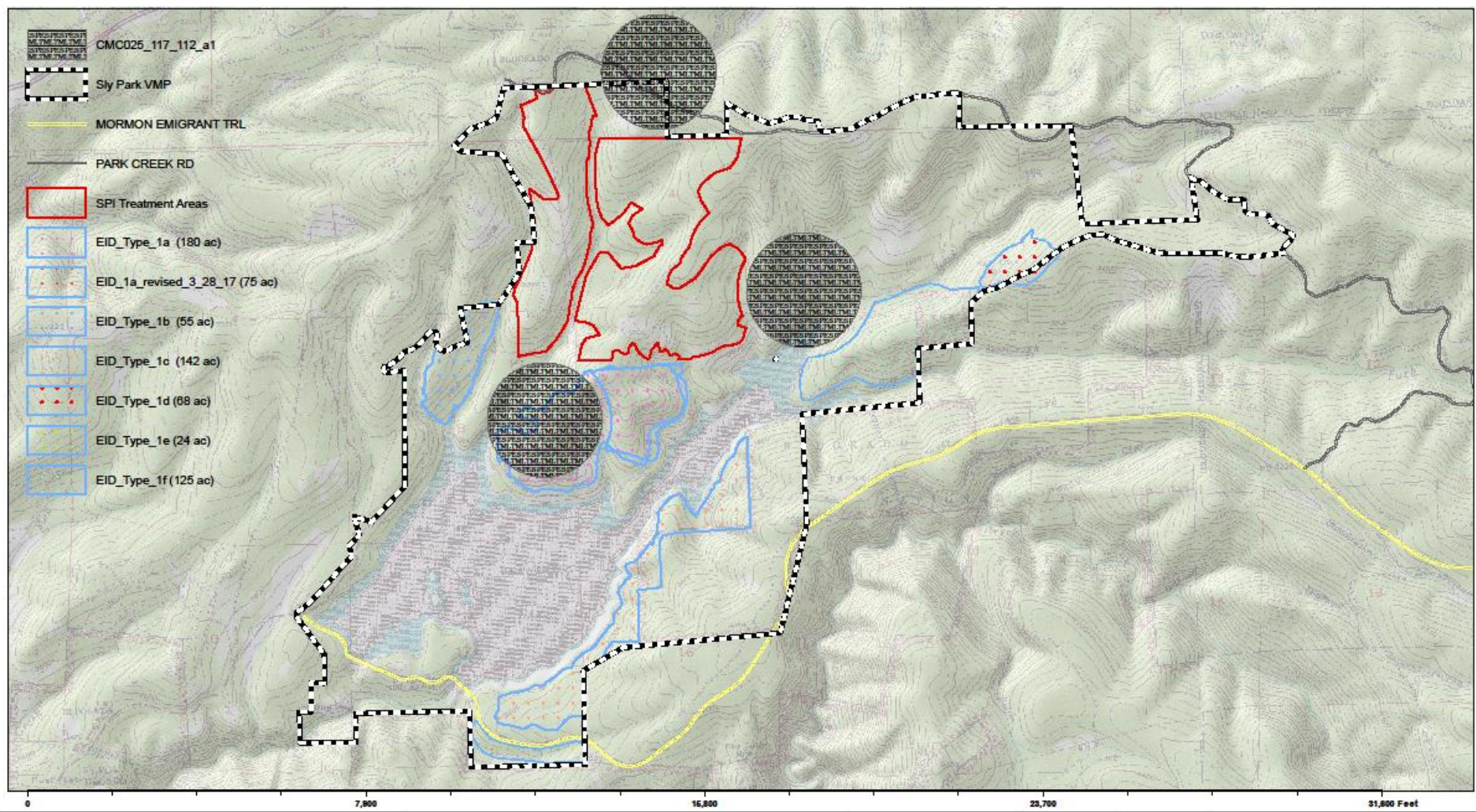




-  Sly Park VMP
-  stream_vmp
-  Type 1 Treatment (458 ac)
-  Type 2 Treatment (320 ac)
-  Type 3 Treatment (82 ac)
-  Type 4 Burn Only (56 ac)
-  Type 5 Treatment (27 ac)
-  Type 6 Treatment (100 ac)
-  VMP_NON_OP
-  EID_Type_1a (180 ac)
-  EID_Type_1b (55 ac)
-  EID_Type_1c (380 ac)
-  EID_Type_1d (68 ac)
-  Raods
-  Countour 40ft
-  MORMON EMIGRANT TRL
-  PARK CREEK RD
-  EL DORADO IRRIGATION DIST
-  EL DORADO IRRIGATION DISTRICT
-  SIERRA PACIFIC INDUSTRIES
-  UNITED STATES OF AMERICA
-  Jenkinson Lake



0 7,800 15,200 22,800 30,400 Feet



Sly Park Vegetation Management Project

El Dorado County

1:25,000

The Resource Conservation Districts (RCD) make no representations or warranties regarding the accuracy of data or maps. The RCD shall not be liable under any circumstances for any direct, special, incidental, or consequential damages with respect to any user or third party on account of or arising from the use of data or maps.

Created by: **Mark Egbert**
 Date: **October 3, 2017**
 Contact: **100 Forni Road, Placerville CA (530) 296-6830**



**LEFT
COAST
LAND
CLEARING**

LIC# 95662
LTOP # 1022
19740 Geace Way
Sonoma, CA 95370
209-536-9174



Garrett Forest Management
PO Box 2350
Placerville, CA 95667

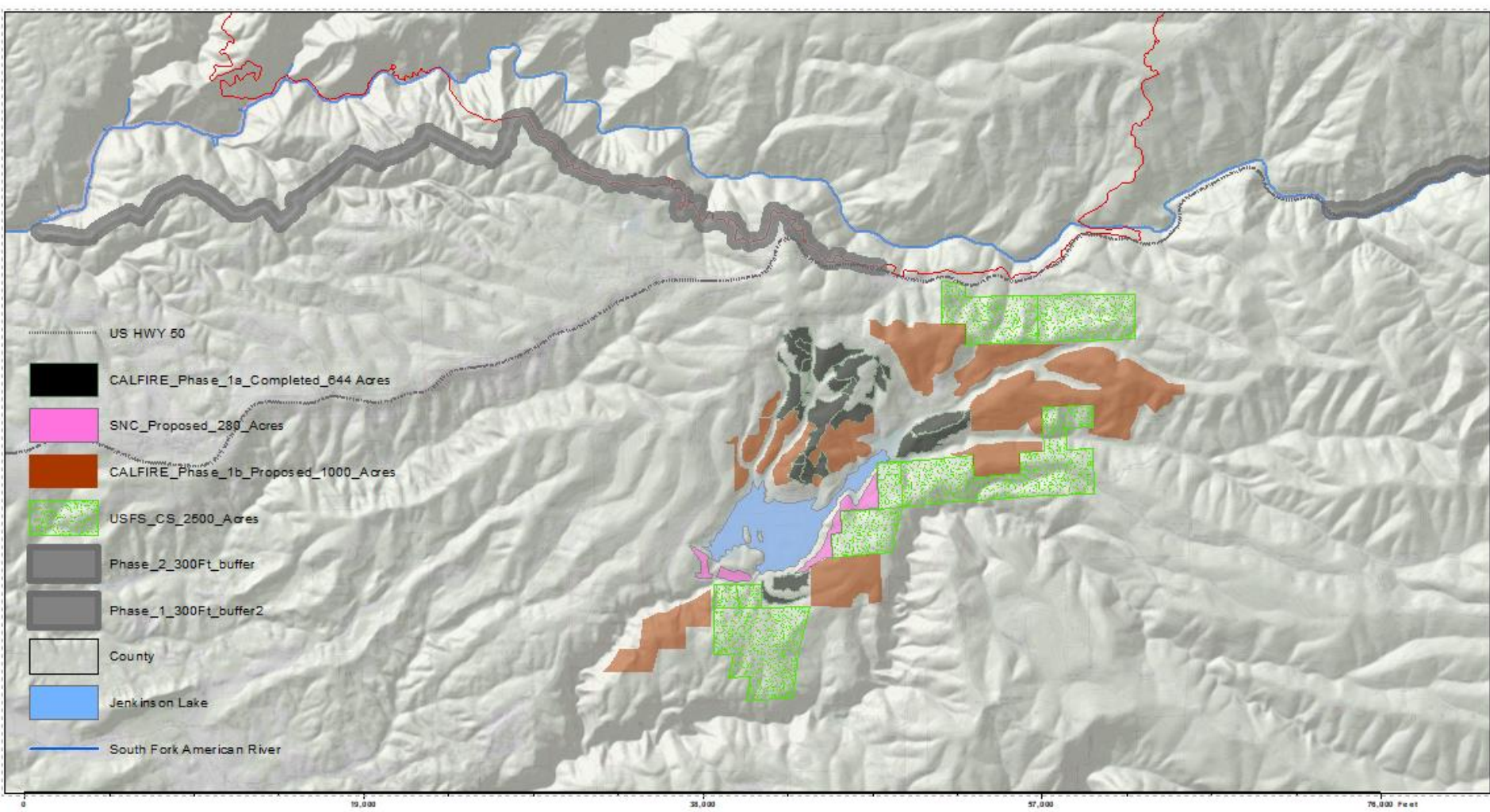












Fire Adapted 50
 SOFAR Cohesive Strategy
 Collaborative Community Wildfire
 Protection Efforts



El Dorado County



1:60,816



The Resource Conservation Districts (RCD) make no representations or warranties regarding the accuracy of data or maps. The RCD shall not be liable under any circumstances for any direct, special, incidental, or consequential damages with respect to any user or third party on account of or arising from the use of data or maps.



Created by: Mark Egbert

Date: July 31, 2018

Contact: 100 Fern Road, Placerville CA (530) 295-5630



Sly Park Vegetation Management Project Phase I

CALFIRE Funding 2018

\$972,000.00

644 acres

\$1,509.00/ acre total project cost

CALFIRE Funding 2019

\$975,000.00

Est. 1000 acres to be treated

Sierra Nevada Conservancy 2019

\$500,000.00

345 acres

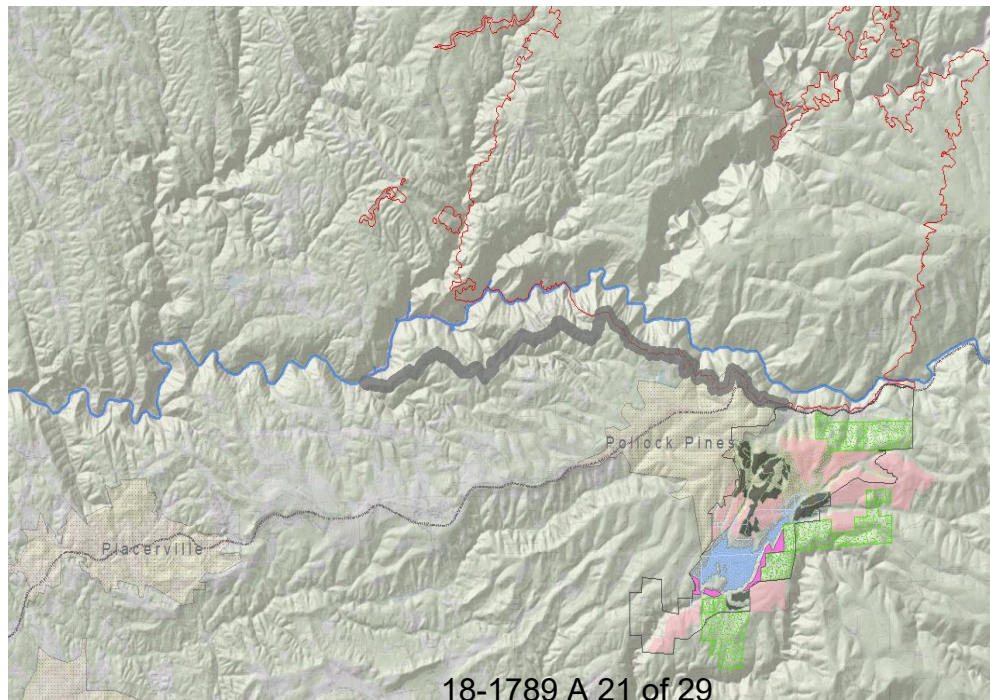
Over 2000 acres under Phase I



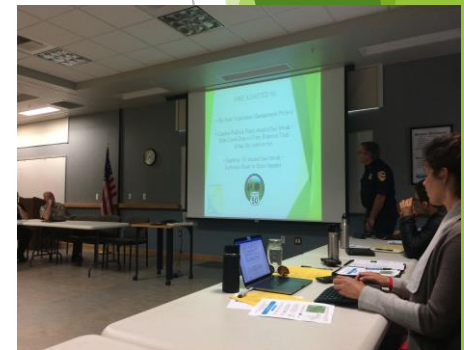
Camino/Pollock Pines SFB Project Phase II

Joint NEPA/ CEQA Environmental planning being
conducted under
Good Neighbor Authority

CALFIRE: \$1,957,000.00
1000+ acres

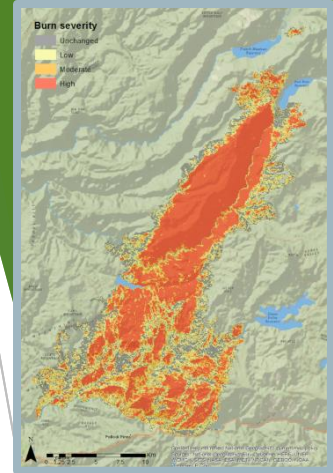


18-1789 A 21 of 29



Highway 50 Corridor Fuel Break Project Phase III

400 acres being treated under Good Neighbor Authority



El Dorado County
Resource Conservation District



SIERRA PACIFIC
INDUSTRIES
Growing Forests For Our Future



El Dorado Irrigation District

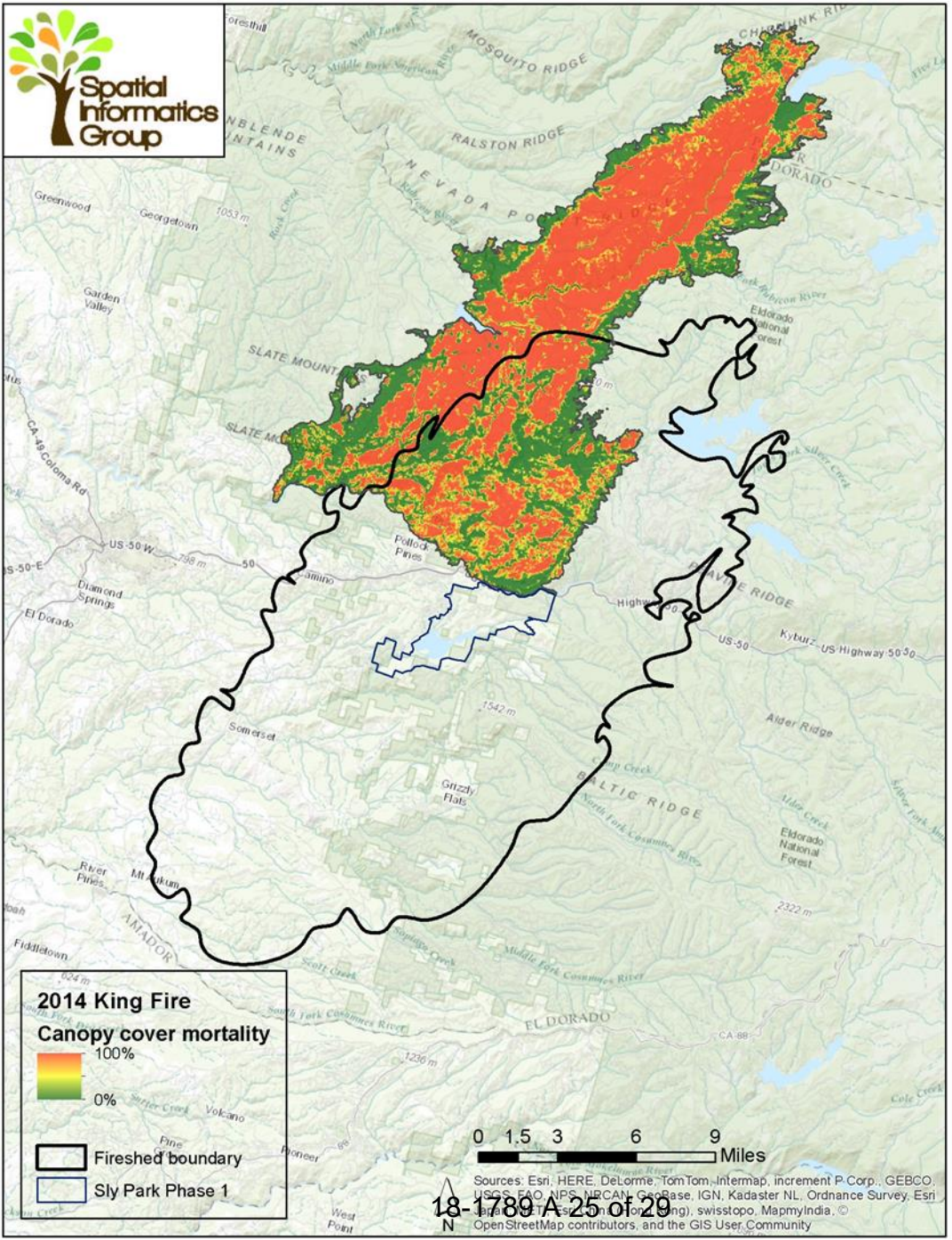




Long-Term Management Vegetation Management Program (VMP)







Sources: Esri, HERE, DeLorme, TomTom, Intermap, increment P Corp., GEBCO, USGS, FAO, NPS, NRCAN, GeoBase, IGN, Kadaster NL, Ordnance Survey, Esri, Swisstopo, (Switzerland), swisstopo, MapmyIndia, © OpenStreetMap contributors, and the GIS User Community

18-1189-A-25 of 29

**Cone Fire – September 2002
Blacks Mountain Experimental Forest**

Unthinned

Unthinned

**Thinned 1998 +
RxBurn 2000**

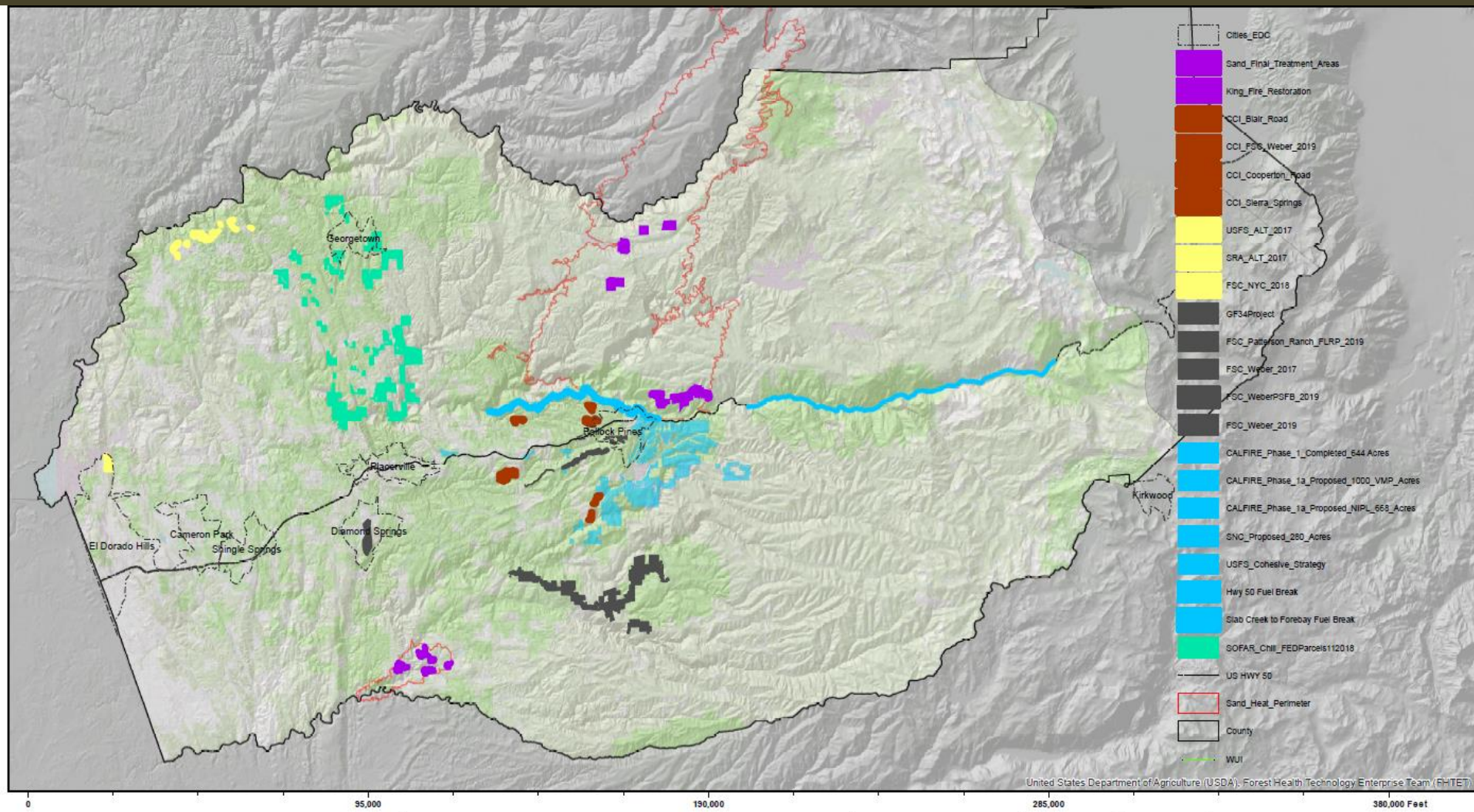
**Thinned Mid 1980s
No RxBurn**

:40PH



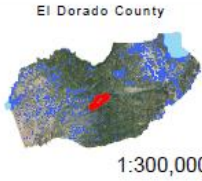
<https://vimeo.com/288456409>

<http://eldoradorcd.sightbox.io>



United States Department of Agriculture (USDA); Forest Health Technology Enterprise Team (FHTET)

**El Dorado County
Forestry and Fuels Management Projects
El Dorado County & Georgetown Divide
Resource Conservation Districts
2017-2018**



The Resource Conservation Districts (RCD) make no representations or warranties regarding the accuracy of data or maps. The RCD shall not be liable under any circumstance for any direct, special, incidental, or consequential damages with respect to any user or third party on account of or arising from the use of data or maps.

Created by: **Mark Egbert**
Date: **December 3, 2018**
Contact: **100 Forni Road, Placerville CA (530) 295-5630**



Thank you!