

By 2030

Midtown Tahoe on Ski Run

The Lake Trail

The US Outdoor Capital

Chattanooga, TN
1969 - Most Polluted US City

2000's - "Boulder of the East"

Built around outdoor recreation



Vision 2000

3000 Citizens
Chattanooga Ventures

7 Dot Process



River City Company

Private Money as a Catalyst



1992 Tennessee Aquarium



1993 - First multi-family in 20 years

Strategic Plan for Outdoor Recreation in the Chattanooga Region

EXECUTIVE SUMMARY

Policy Framework and Guidelines for Action

**A synthesis of ideas and comments generated during the
community-based interactive planning process
November 2003 – January 2004**

TABLE OF CONTENTS

	Page
I. INTRODUCTION	1
II. VISION AND CHALLENGE	3
III. UNDERLYING POLICIES AND PRINCIPLES	3
A. Stewardship and Conservation: A Policy of Sustainability	
B. Systemic Approach	
C. Inclusive	
D. Responsible and Appropriate Participation.	
E. Action Through Partnerships	
IV. MECHANISM FOR CENTRAL COORDINATION	6
V. FUNCTIONS OF THE CENTRAL MECHANISM	6
A. Partnerships/Community-building.	
B. Clearing House	
C. Marketing. Promotion, Media Relations	
D. Public Sector Liaison	
VI. PROGRAMS	7
A. Activities, Events and Competitions	
B. Community-Based	
C. Education	
D. Economic and Business Development	
VII. ORGANIZATIONAL DESIGN OF THE MECHANISM	9
VIII. MARKETING AND PROMOTION PLAN	10
IX. PHYSICAL PRESENCE	11
A. Place(s) that make the Outdoor Recreation Initiative “real”	
B. Riverfront as a gateway	
C. “One-Stop Shop”?	
D. Enhancing Venues for Outdoor Recreation	
X. IMMEDIATE NEXT STEPS	12



2005 Waterfront Park



1 - Private money to get the public money working and prioritized to long term items

2 - Community buy in

3 - Government “led to solutions”

4 - 10+ year plans that are followed up on

- Tahoe Midtown - a downtown on Ski Run — both physical space and people
- Lake Tahoe becomes the Outdoor Capital of The US. A big part of that is moderate climbing and mountain bike mecca
- The Lake Trail - A bikeable trail around the lake (that is friendly to non-backpackers)





Before

After





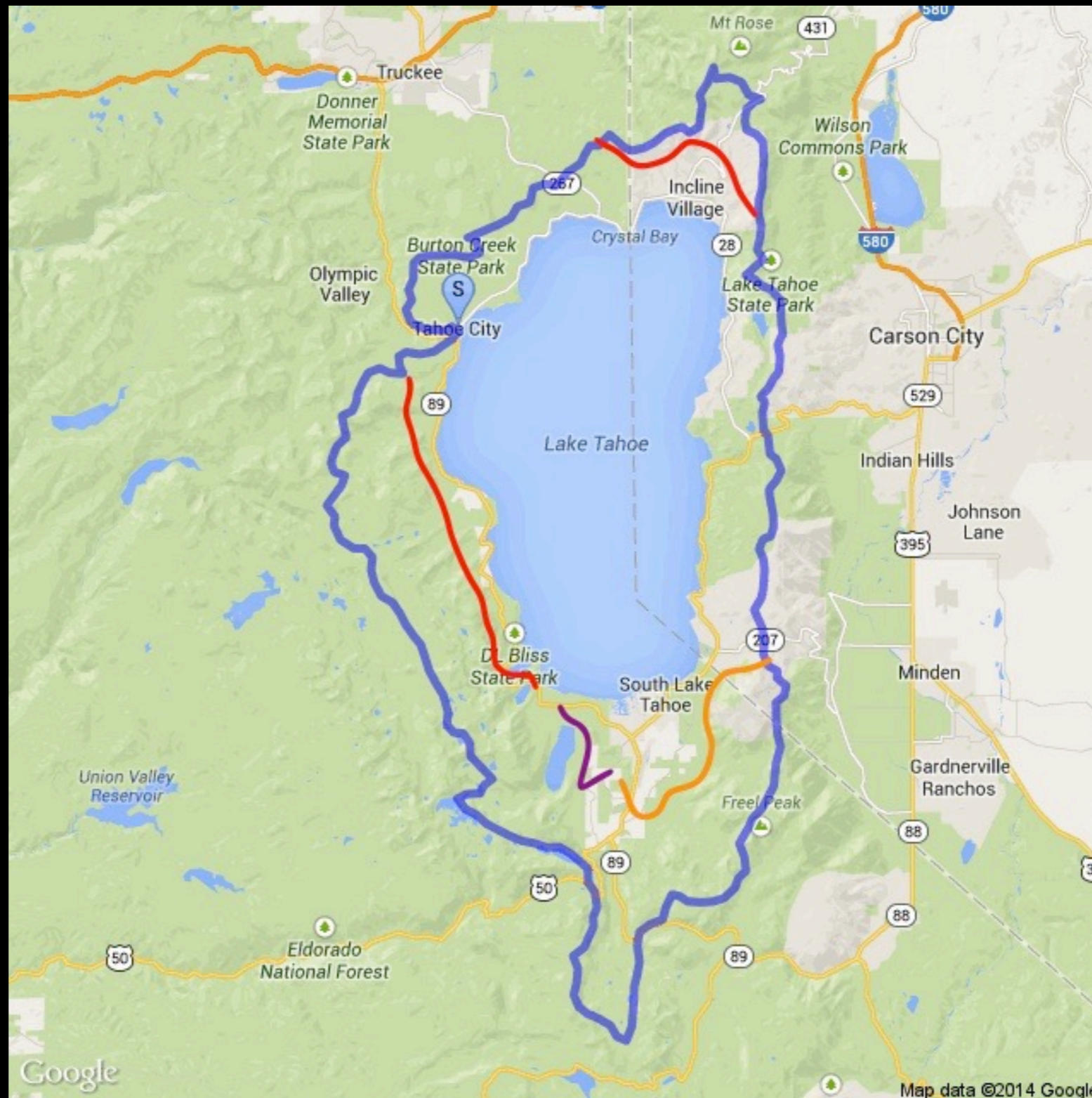


SKI RUN PRESENTS:





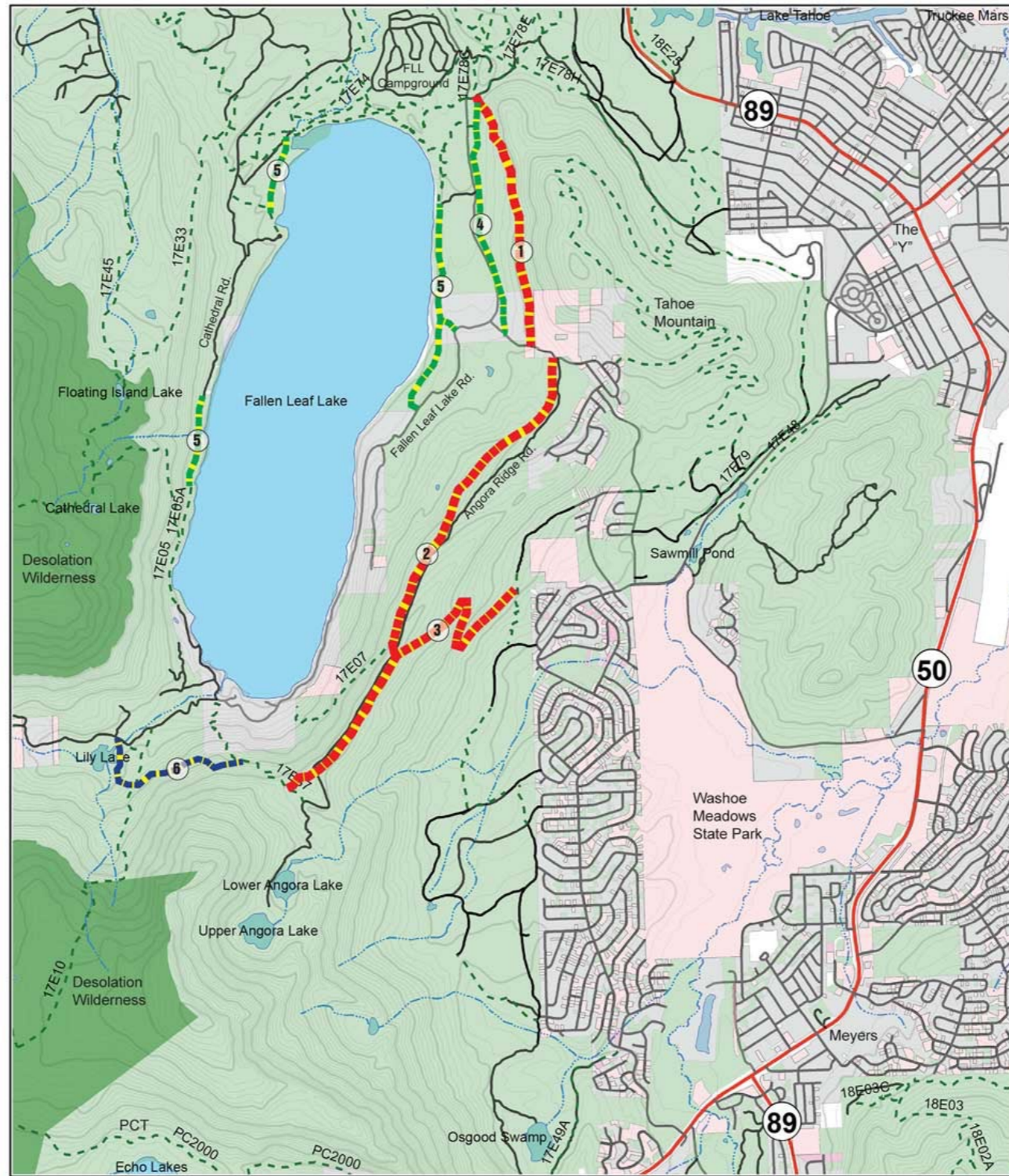








FALLEN LEAF LAKE/ ANGORA RIDGE TRAIL PROJECT



PROJECT DETAILS:

- (2017) New construction of a 2 mile long, 24" wide shared use trail starting near the intersection of Fallen Leaf Lake Road and Emerald Bay Rd. traversing uphill before connecting at the bottom of Angora Ridge Rd.
- (2017) New construction of a 2.5 mile long, 18" wide shared use trail running the full length of Angora Ridge. This trail will provide separation from the road for non-motorized users.
- (2017) New construction of a 1.5 mile long, 18" wide shared use trail connecting Angora Ridge to the trail network near Mule Deer Court.
- (Date TBD) Reconstruction of the "rock Garden" trail running from HWY 89 south parallel to Fallen Leaf Road. This trail currently a non-system trail and will be adopted by the Forest Service.
- (Date TBD) Adopt and upgrade user trails around Fallen Leaf Lake, in many cases the trail width will be narrowed and alignments will be adjusted to provide better connections and sustainability.
- (Date TBD) New Trail connecting from Angora Lakes via the existing "Church Trail" to Lily Lake. This is steep and rocky terrain and will likely be the most difficult trail to build in this project.

Status: This project is shovel ready, with some remaining field work to be done prior to construction to finalizing the alignments in the Spring of 2017. This project is currently partially funded by private donations through TAMBA, and will require approximately \$150,000 to complete all projects shown on this map. Once funding is secured, the project will be completed using Forest Service Trail Crew cutting in the trail corridor and completing technical rock work aspects, with TAMBA volunteers completing the trail finish work.



MAP LEGEND

- LTBMU Trails (Existing)
 - Existing Road
 - Stream (Perennial)
 - Adopt & Upgrade Trail (Date TBD)
 - New Trail (Potential 2017 Build)
 - New Trail (Potential 2018-19 Build)
- Basic Ownership**
- COUNTY
 - PRIVATE
 - STATE
 - USDA FOREST SERVICE

