

Placerville Jail Expansion El Dorado County

Board of Supervisors' Workshop

Workshop Agenda

- Objectives of the Needs Assessment Update
- Conclusions of the Needs Assessment Update
- Jail Bed Needs
- Condition of Existing Jail Facility and Infrastructure
- Site Issues
- Proposed Expansion Project
- Cost of Construction

Objectives of the Needs Assessment



1. **Update Inmate Population Database**
 - Updates the “Placerville Detention Facility Needs Assessment” from April 2005
 - Planning Period = 2007 to 2030
2. **Quantify Impact of the Shingle Springs Casino of Future Jail Beds**
3. **Update and Refine Inmate Population Data**

Conclusions of the Needs Assessment Update



1. Current Placerville Jail Inmate Population

- **222** - Average Daily Population (ADP) in 2006
- **233** - Inmates as of May 2007
- **303** – Placerville Jail Rated Beds capacity
Currently at 265 with CSA approval to expand to 303 beds

2. Projected Inmate Population

- 403 Beds needed by 2010
- 457 Beds needed by 2015 - the first planning period
- Bed needs are based on ADP projections.
- ADP based on County population projections and Impact of Shingle Springs Casino

Year	ADP	Adjustment	Peak Down-Cell Bed Requirement
2010	350	53	403
2015	397	60	457
2020	446	67	513
2025	493	74	567
2030	541	81	622

Jail Bed Needs



1. Phase I – 2015

- Adds a total of 176 new beds - expanding capacity to 479 Beds
- Resolves current and future bed needs through 2015
- Resolves need for minimum/medium security dormitory beds
- Adds medium/maximum security, administrative segregation based on classification needs.
- Beds are added in modules of either 48 or 64 for planning and staffing efficiency.
- (2) – 64 bed Dormitories = 128 Beds
(Minimum Security)
- (3) – 16 bed cell units = 48 beds
(medium/maximum security, administrative segregation)

Jail Bed Needs

2. Phase 2 – 2030

- Adds 192 Beds
- Comprised of three 64 Bed dormitories

Existing Jail

1. Completed in 1988

- Designed to accommodate 150 beds

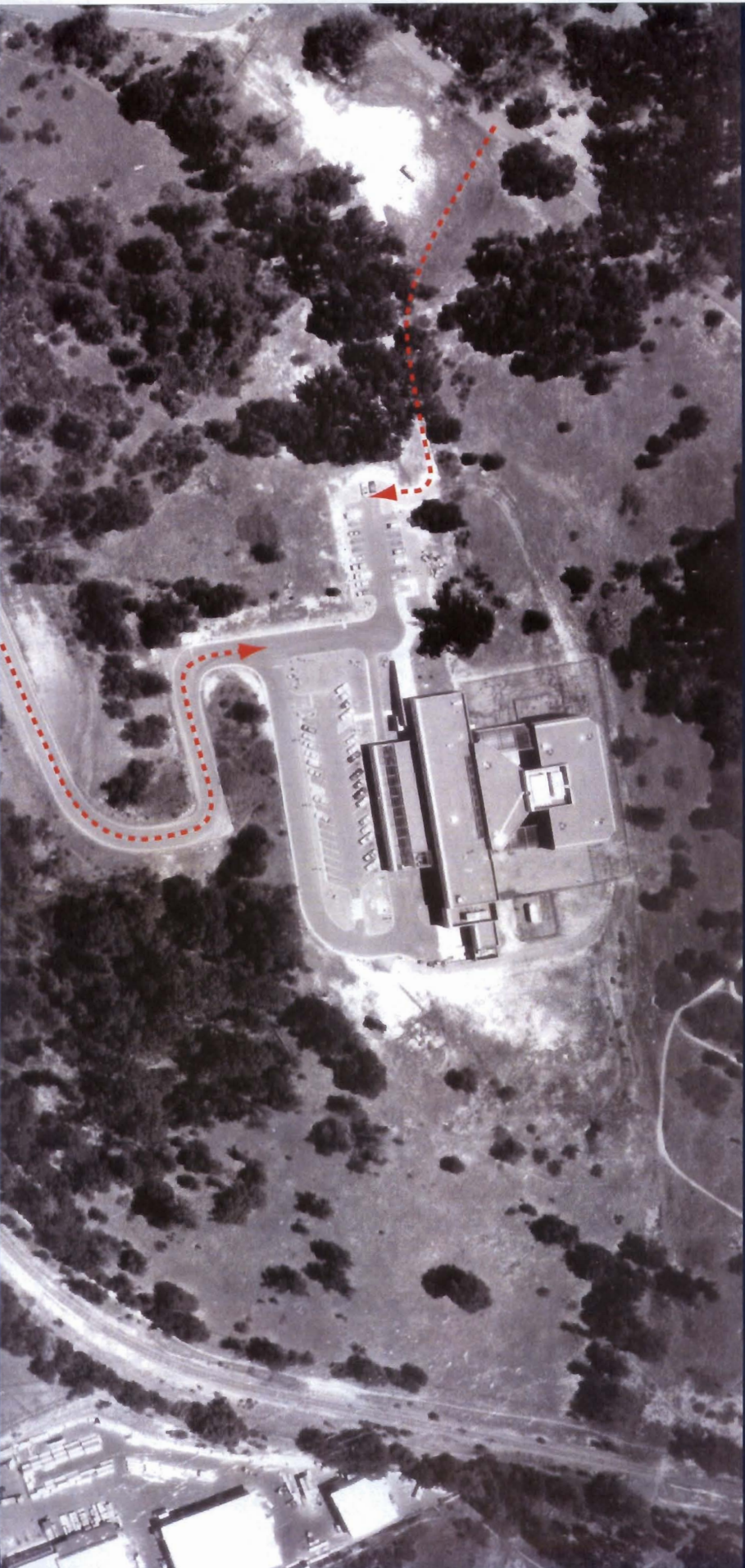
2. Building Deficiencies

- Corrections Standard Authority (CSA) has approved double bunking for most of the cells to increase rated capacity. Facility will be deficient in bed capacity within 3 years (by 2010) without expansion
- Food Service – currently at maximum capacity; aging equipment is in need of replacement
- Lack of adequate/required inmate property storage
- Lack of capacity for medical/mental health treatment needs

Site Issues

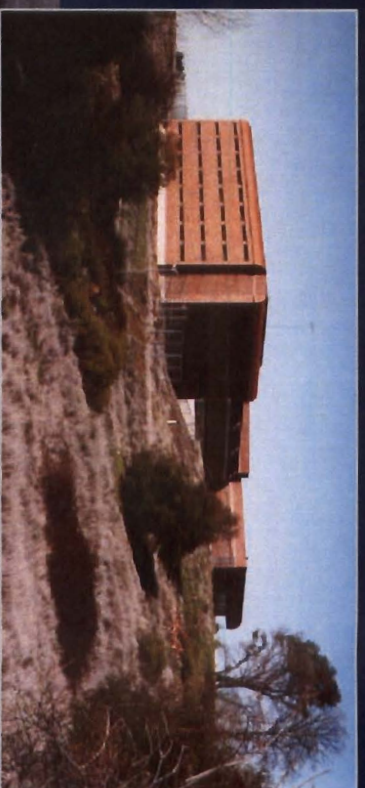
1. Access

N L A
nacht & lewis
ARCHITECTS



Site Issues

2. Terrain/Buildable Area



Site Issues

3. Parking



Proposed Expansion



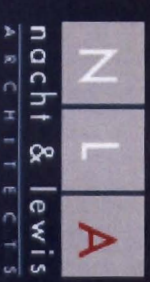
1. Existing Facility

- Comprises 73,007 net usable square feet (NUSF)
- 93,000 GSF

2. Phase I - 2015

- Requires a total of 115,162 NUSF
- Approx. 150,000 GSF
- Consists of 176 new beds; total beds = 479
- Construction of a new food service building and warehouse
- Expands existing intake of support space
- Expands medical / mental health
- Expands laundry / inmate clothing storage
- Expands administrative / staff support space within new construction and remodeled existing space.

Proposed Expansion

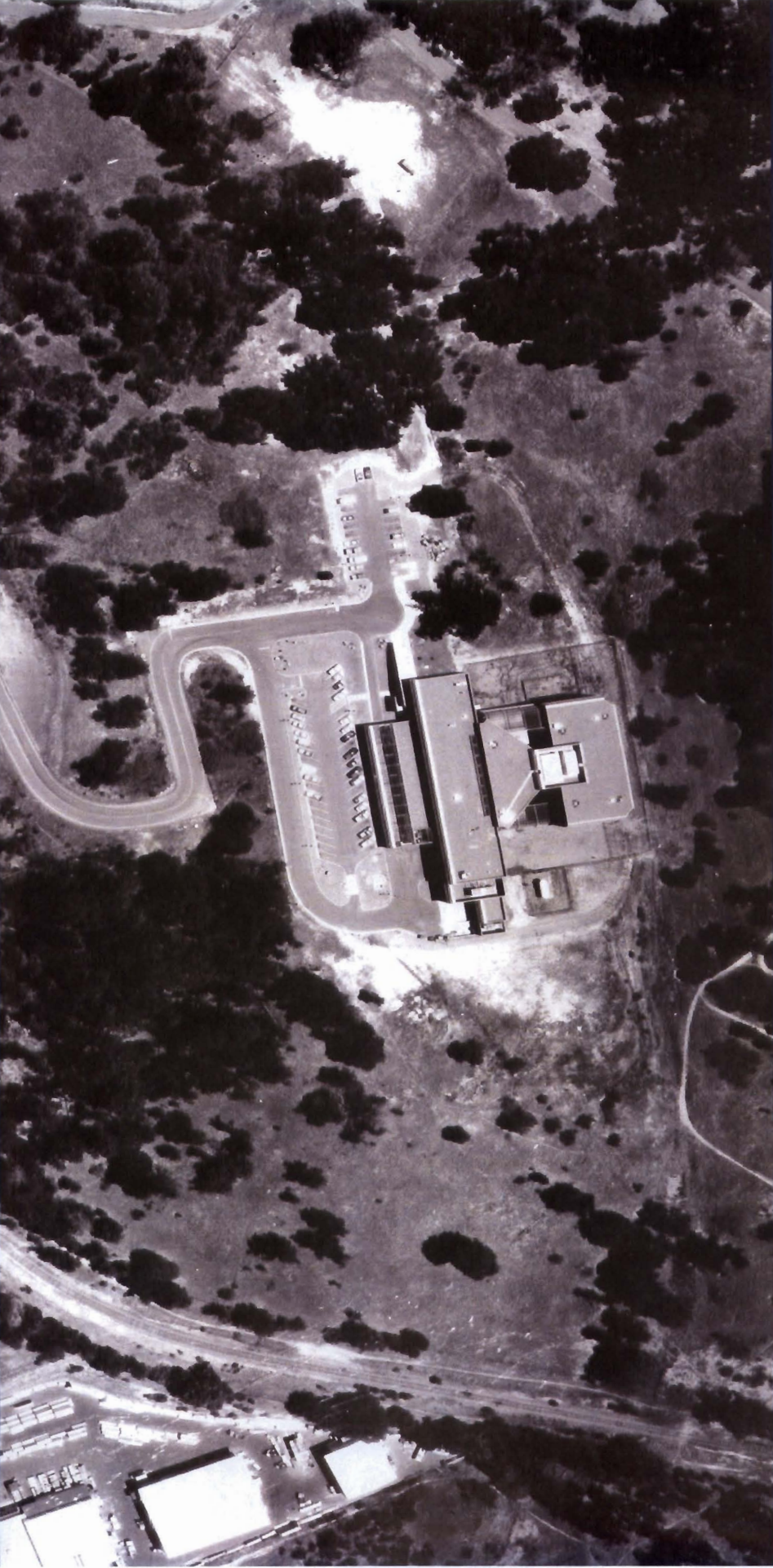


3. Phase II - 2030

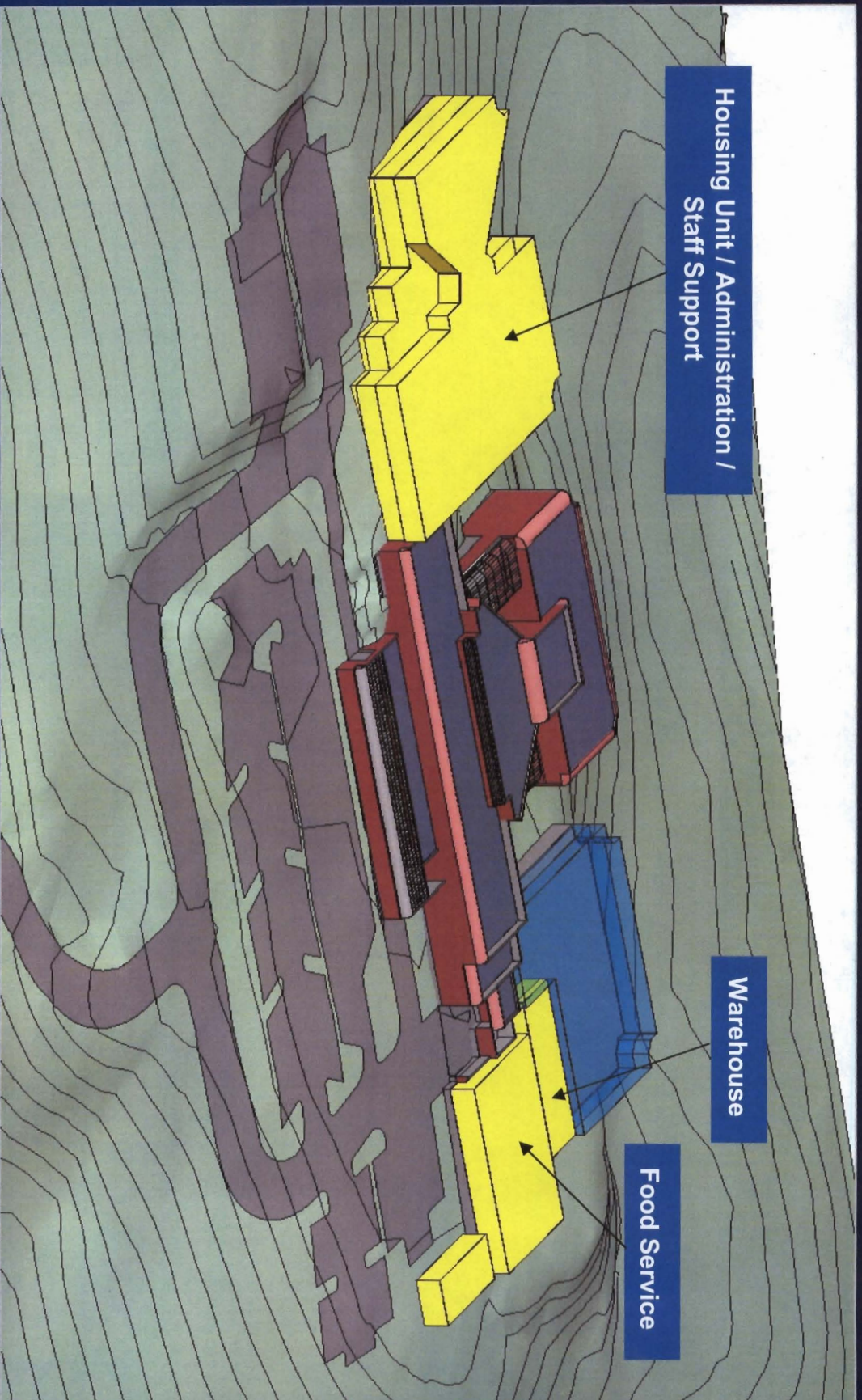
- Requires a total of 152,927 net usable square feet
- Approximately 190,000 gross square feet
- Consists of 192 new beds; total beds = 671

Existing Jail

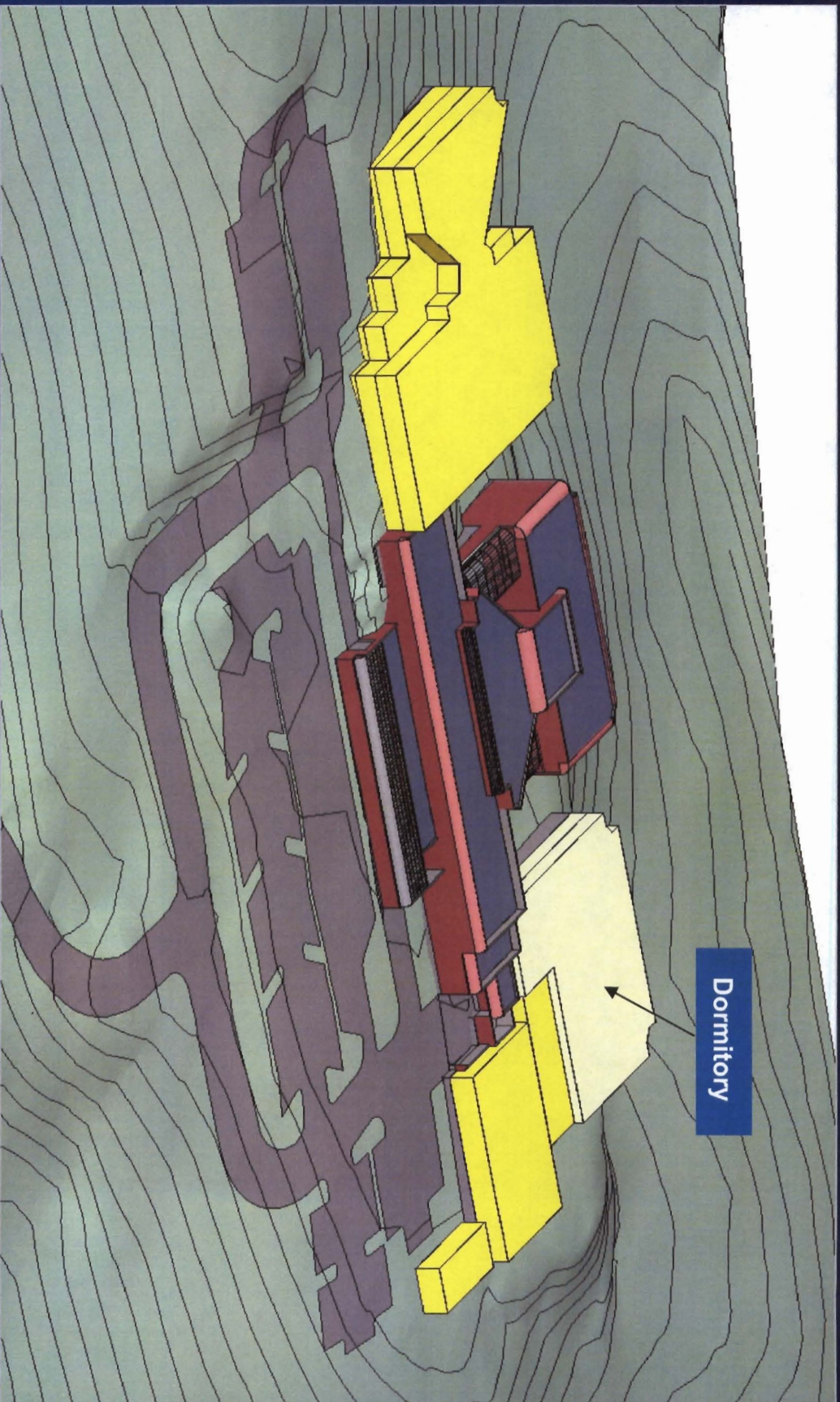
N L A
nacht & lewis
ARCHITECTS



Proposed Expansion – Phase I 2015

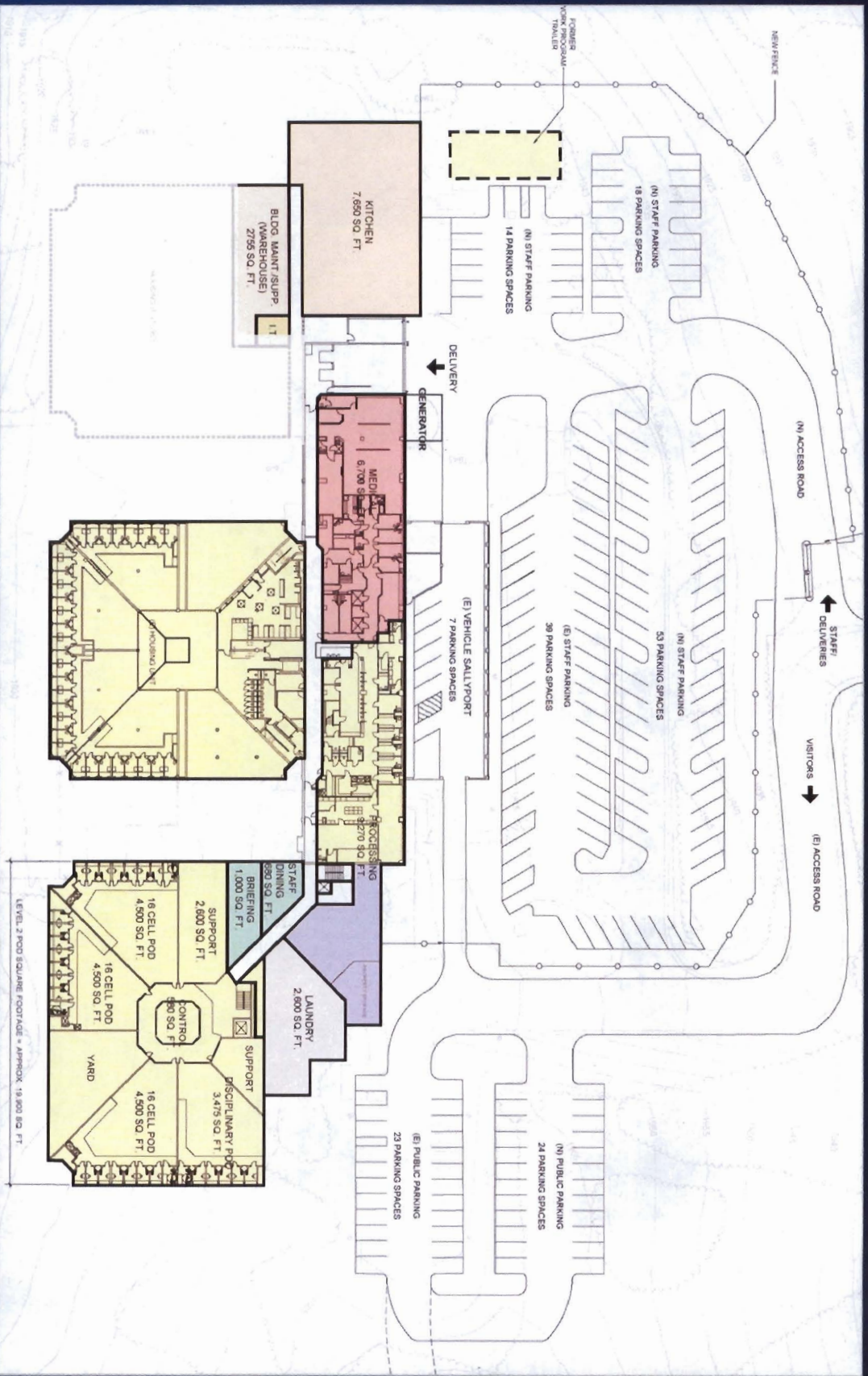


Proposed Expansion - Phase 2 2030



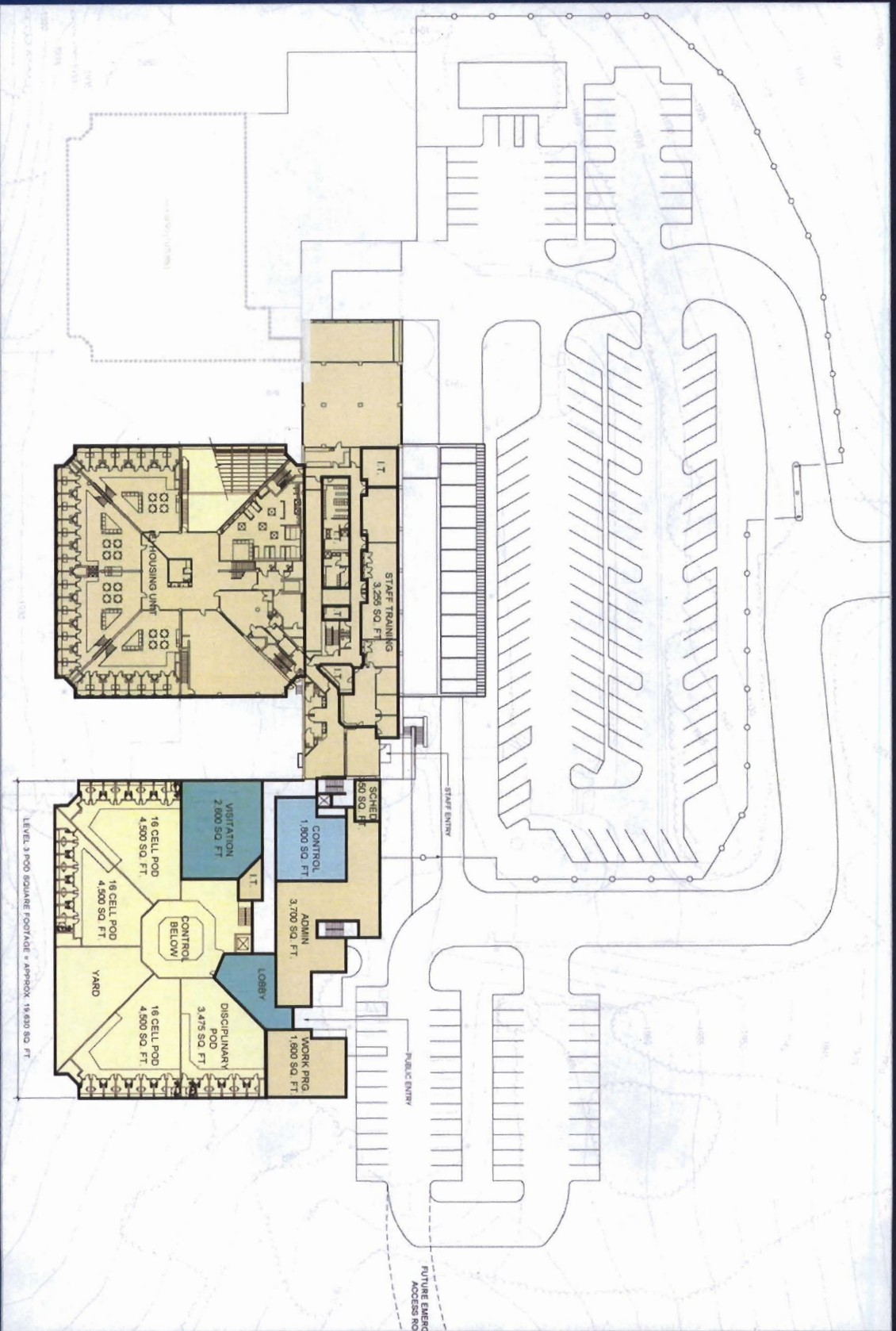
Proposed Expansion – Phase I

178,000 GSF



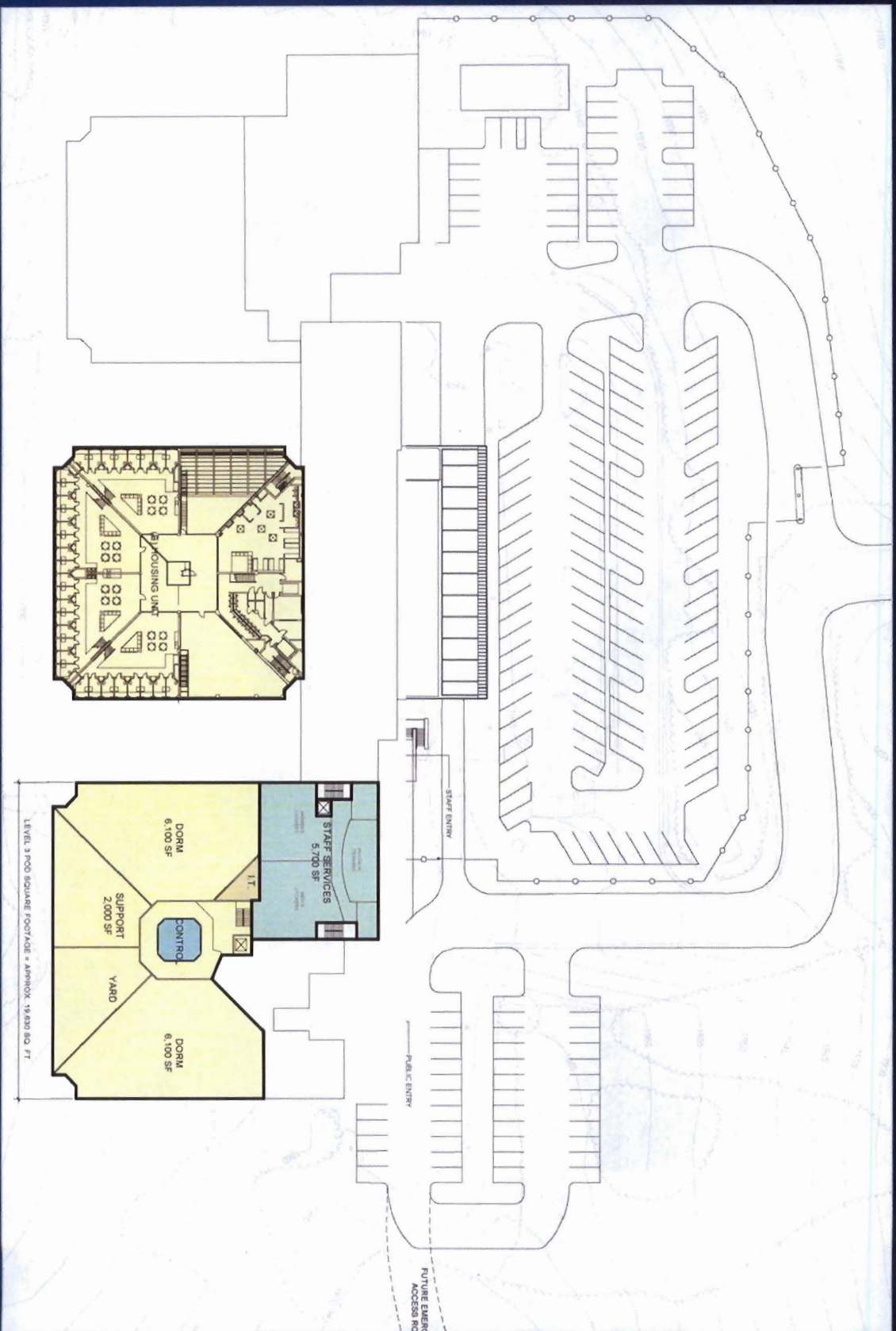
Level 2 – Intake/Medical/Kitchen

Proposed Expansion – Phase I



Level 3 – Administration/Visitation

Proposed Expansion – Phase I



Level 4 – Housing/Staff Services

Phase I - Construction Cost


118,810 GSF = Total Improvements

(New construction and remodeled space)

Budget Estimate (Construction Only):

\$54,458,000 (escalated to mid-point of construction)

Construction cost per square foot: \$ 458.00/SF



Placerville Jail Expansion
El Dorado County
Board of Supervisors' Workshop

N I A
Neville & Leitch
ARCHITECTS

Workshop Agenda

- Objectives of the Needs Assessment Update
- Conclusions of the Needs Assessment Update
- Jail Bed Needs
- Condition of Existing Jail Facility and Infrastructure
- Site Issues
- Proposed Expansion Project
- Cost of Construction

N I A
Neville & Leitch
ARCHITECTS

Objectives of the Needs Assessment

1. Update Inmate Population Database
 - Updates the "Placerville Detention Facility Needs Assessment" from April 2005
 - Planning Period = 2007 to 2030
2. Quantify Impact of the Shingle Springs Casino of Future Jail Beds
3. Update and Refine Inmate Population Data

N I A
Neville & Leitch
ARCHITECTS

Conclusions of the Needs Assessment Update

1. Current Placerville Jail Inmate Population

- 222 - Average Daily Population (ADP) in 2006
- 233 - Inmates as of May 2007
- 303 - Placerville Jail Rated Beds capacity
Currently at 285 with CSA approval to expand to 303 beds

2. Projected Inmate Population

- 403 Beds needed by 2015 - the first planning period
- Bed needs are based on ADP projections
- ADP based on County population projections and Impact of Single Springs Casino

Year	ADP	Required	Total Number of Beds
2006	222	83	403
2007	233	87	413
2008	403	74	487
2009	411	81	522

Jail Bed Needs

1. Phase I - 2015

- Adds a total of 176 new beds - expanding capacity to 479 Beds
- Resolves current and future bed needs through 2015
- Resolves need for minimum/medium security dormitory beds
- Adds medium/maximum security, administrative segregation based on classification needs.
- Beds are added in modules of either 48 or 64 for planning and staffing efficiency:
(1) - 64 bed Dormitories = 128 Beds
(Minimum Security)
- (3) - 16 bed cell units = 48 beds
(medium/maximum security, administrative segregation)

Jail Bed Needs

2. Phase 2 - 2030

- Adds 192 Beds
- Comprised of three 64 Bed Dormitories

Existing Jail

1. Completed in 1988

- Designed to accommodate 150 beds


2. Building Deficiencies

- Corrections Standard Authority (CSA) has approved double bunking for most of the cells to increase rated capacity. Facility will be deficient in bed capacity within 3 years (by 2010) without expansion
- Food Service – currently at maximum capacity; aging equipment is in need of replacement
- Lack of adequate/required inmate property storage
- Lack of capacity for medical/mental health treatment needs

7

Site Issues

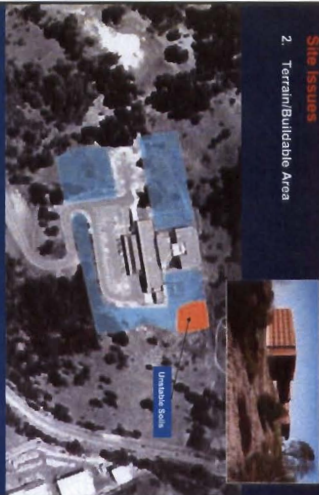
1. Access



8

Site Issues

2. Terrain/Buildable Area



9

Site Issues
3. Parking



10

Proposed Expansion

1. Existing Facility
 - Comprises 73,007 net usable square feet (NUSF)
 - 93,000 GSF
2. Phase I - 2015
 - Requires a total of 115,162 NUSF
 - Approx. 150,000 GSF
 - Consists of 176 new beds, total beds = 479
 - Construction of a new food service building and warehouse
 - Expands existing intake of support space
 - Expands medical / mental health
 - Expands laundry / inmate clothing storage
 - Expands administrative / staff support space within new construction and remodeled existing space.

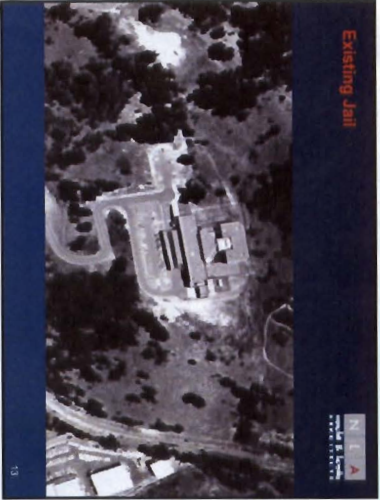
11

Proposed Expansion

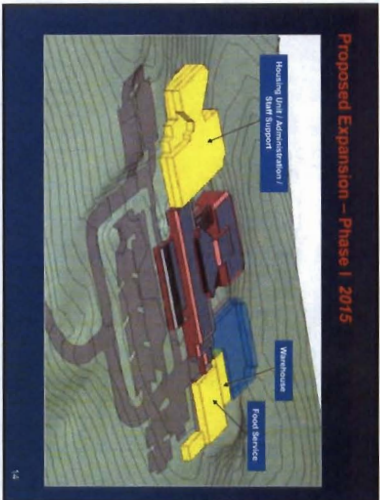
3. Phase II - 2030
 - Requires a total of 152,927 net usable square feet
 - Approximately 190,000 gross square feet
 - Consists of 192 new beds, total beds = 671

12

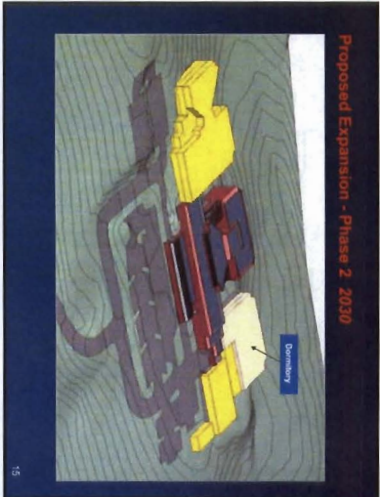
Existing Jail



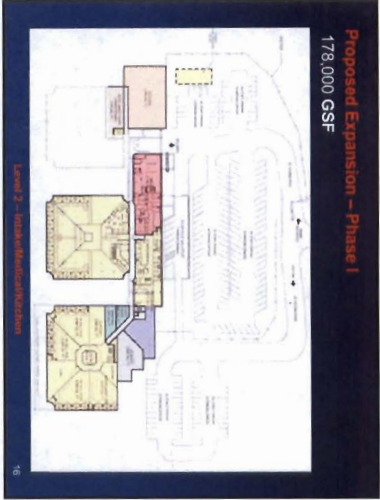
Proposed Expansion - Phase I 2015



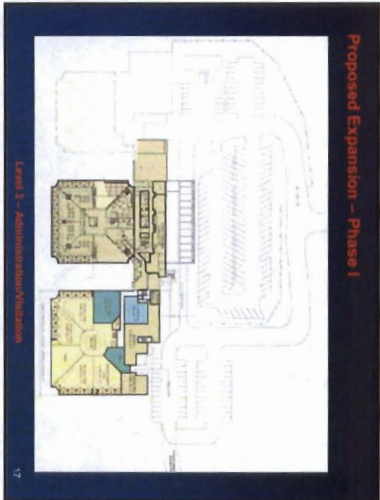
Proposed Expansion - Phase 2 2030



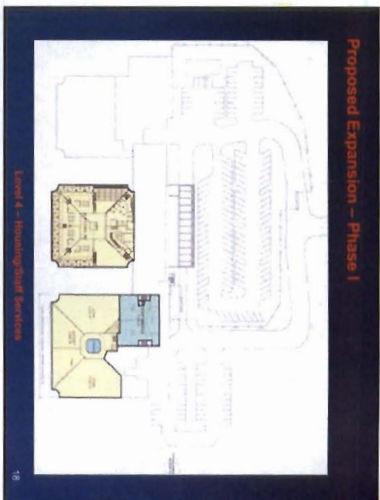
Proposed Expansion – Phase I
178,000 GSF



Proposed Expansion – Phase I



Proposed Expansion – Phase I



Phase I - Construction Cost



118,810 GSF = Total Improvements

(New construction and remodeled space)

Budget Estimate (Construction Only):

\$54,458,000 (escalated to mid-point of construction)

Construction cost per square foot: \$ 458.00/SF
