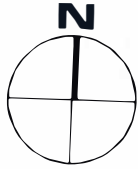


N88°06'39"E
1319.07''

CENTER-EAST 1/16 CORNER OF SECTION 16, T.10N., R.9E., M.D.M., FOUND 1-1/4" IRON PIPE WITH A 2-1/2" BRASS CAP STAMPED "STATE OF CALIFORNIA, DIVISION OF FORESTRY, E1/16, S16, C — C, S16, 1955"

EAST 1/4 CORNER OF SECTION 16, T.10N., R.9E., M.D.M., FOUND 1" IRON PIPE WITH A 1-1/4" IRON CAP STAMPED "1/4 S16/S15, LS1820, 1957"



SCALE
0 30
1 INCH = 30 FEET

NOTE: BEARINGS AND DISTANCES USED IN THE ABOVE DESCRIPTION ARE ON THE CALIFORNIA CO-ORDINATE SYSTEM OF 1988, ZONE 2, EPOCH 2010. ROTATE BEARINGS SHOWN CLOCKWISE BY 0°38'14" TO GET GEODETIC BEARINGS. MULTIPLY DISTANCES SHOWN BY 1.00015326 TO GET GROUND DISTANCES.

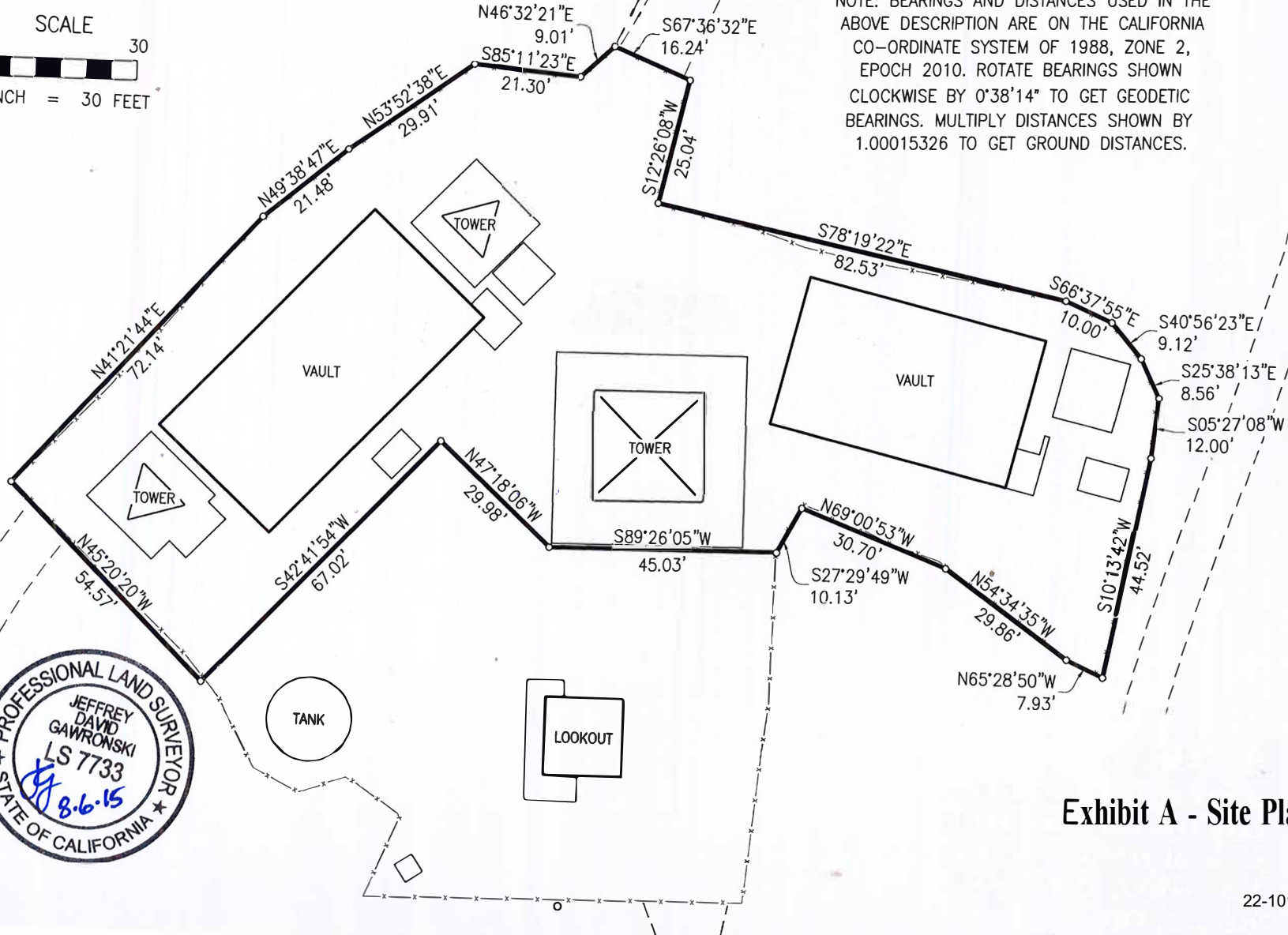


Exhibit A - Site Plan