

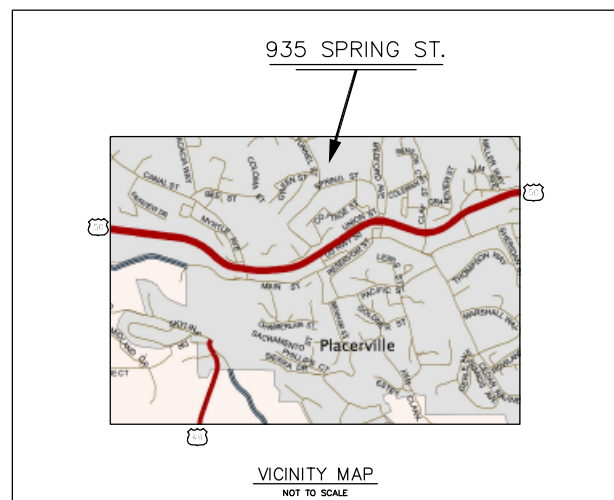
RECEIVED  
BOARD OF SUPERVISORS  
EL DORADO COUNTY  
11:36 am, Dec 30, 2010

# EL DORADO COUNTY ACCESS CONTROL / CCTV / INTRUSION ALARM SYSTEM

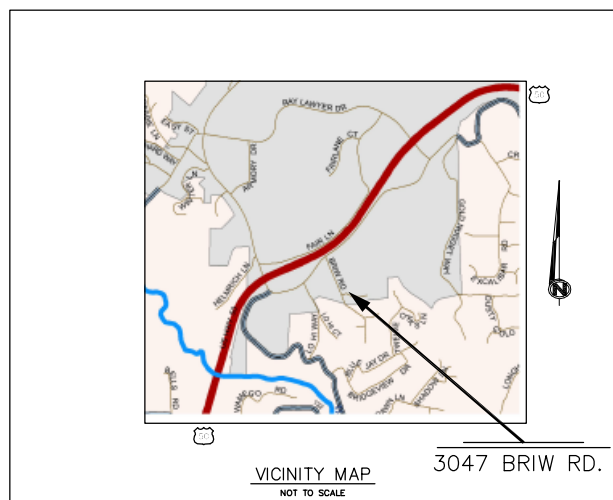
## for the HUMAN SERVICES/ CHILD SUPPORT SERVICES / HEALTH SERVICES DEPARTMENTS PLACERVILLE AND SOUTH LAKE TAHOE- CONTRACT NO. 90400

### SITES

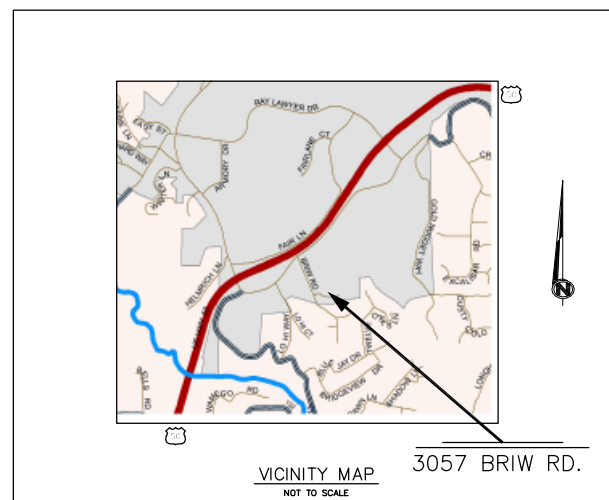
HUMAN SERVICES  
937 SPRING ST.  
PLACERVILLE, CA



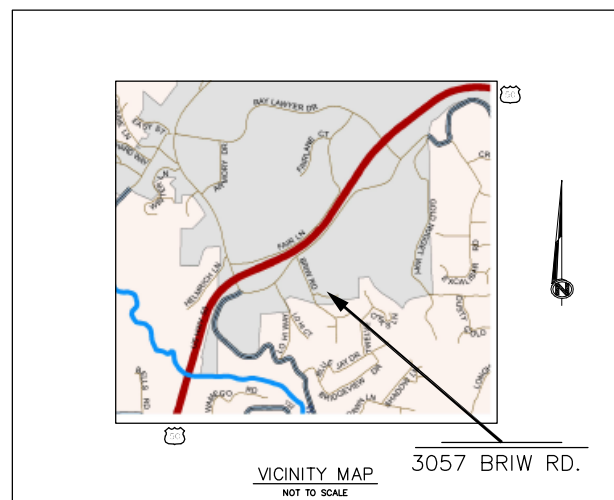
HUMAN SERVICES  
3047 BRIW RD.  
PLACERVILLE, CA



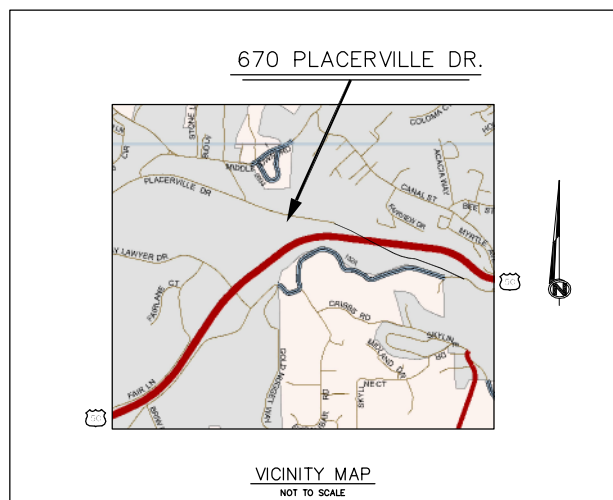
HUMAN SERVICES  
3057 BRIW RD.  
PLACERVILLE, CA



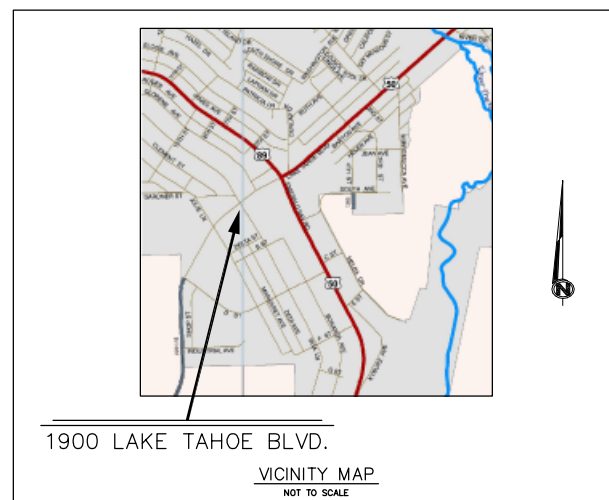
CHILD SUPPORT SERVICES  
3057 BRIW RD.  
PLACERVILLE, CA



HEALTH SERVICES  
670 PLACERVILLE DR.  
PLACERVILLE, CA



HEALTH SERVICES  
1900 LAKE TAHOE BLVD.  
SOUTH LAKE TAHOE, CA



FOR REDUCED PLANS 0 1/2 1 2 3 ORIGINAL SCALE IS IN INCHES

### INDEX TO DRAWINGS

CVR COVER-PROJECT VICINITY MAPS  
A0.1 STANDARD ABBREVIATIONS, PROJECT NOTES & SECURITY SYSTEM LEGEND

#### SECURITY SYSTEM UPGRADES

CVR 1.0 COVER SHEET: HUMAN SERVICES-3057 BRIW RD. PLACERVILLE  
A1.1 SECURITY UPGRADES- BRIW OFFICE INVESTORS BUILDING  
A1.2 SECURITY UPGRADES- BRIW OFFICE INVESTORS BUILDING-CONT.  
CVR 2.0 COVER SHEET: CHILD SUPPORT SERVICES-3057 BRIW RD. PLACERVILLE  
A2.1 SECURITY UPGRADES- BRIW OFFICE INVESTORS BUILDING  
CVR 3.0 COVER SHEET: HUMAN SERVICES-3047 BRIW RD. PLACERVILLE  
A3.1 SECURITY UPGRADES- WILKINSON BUILDING  
CVR 4.0 COVER SHEET: HUMAN SERVICES-937 SPRING ST. PLACERVILLE  
A4.1 SECURITY UPGRADES- MAIN FLOOR  
A4.2 SECURITY UPGRADES- BASEMENT FLOOR  
CVR 5.0 COVER SHEET: MENTAL HEALTH SVCS-670 PLACERVILLE DR. PLACERVILLE  
A5.1 SECURITY UPGRADES-GOLDEN PLAZA CENTER - UPPER LEVEL-WEST SIDE  
A5.2 SECURITY UPGRADES-GOLDEN PLAZA CENTER - MID LEVEL-EAST SIDE  
A5.3 SECURITY UPGRADES-GOLDEN PLAZA CENTER - MID LEVEL-WEST SIDE  
A5.4 SECURITY UPGRADES-GOLDEN PLAZA CENTER - LOWER LEVEL-EAST SIDE  
A5.5 SECURITY UPGRADES-GOLDEN PLAZA CENTER - LOWER LEVEL-WEST SIDE  
CVR 6.0 COVER SHEET: MENTAL HEALTH SVCS-1900 LAKE TAHOE BLVD. S.L.T.  
A6.1 SECURITY UPGRADES-FLOOR PLAN

REVISION	DATE	DESCRIPTION

ACCESS CONTROL/CCTV/  
INTRUSION ALARM SYSTEM  
COVER SHEET & SITE MAPS

MULTIPLE SITES  
EL DORADO COUNTY

County of El Dorado  
Department of Transportation  
Facilities Engineering Division  
2850 Fair Lane Court Placerville, CA 95667 (530) 621-5900

CONTRACT NO. PW 10-30566 CIP NO. 90400

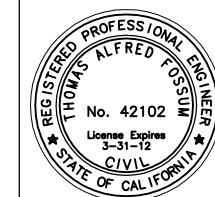
ADOPTED AND APPROVED BY: \_\_\_\_\_ DATE \_\_\_\_\_

CHAIRMAN, EL DORADO COUNTY BOARD OF SUPERVISORS

APPROVED BY: \_\_\_\_\_ DATE \_\_\_\_\_

JAMES W. WARE, P.E. NO. C 61036  
DIRECTOR, EL DORADO COUNTY DEPARTMENT OF TRANSPORTATION

RUSSELL A. NYGAARD, P.E. NO. C 50369  
DEPUTY DIRECTOR OF ENGINEERING, EL DORADO COUNTY DEPARTMENT OF TRANSPORTATION



PREPARED UNDER THE SUPERVISION OF :

REGISTERED CIVIL ENGINEER

DATE: \_\_\_\_\_

THIS DRAWING IS NOT FINAL OR TO BE USED FOR CONSTRUCTION UNTIL IT IS SIGNED BY THE ARCHITECT/ENGINEER.

DATE: 12/03/10

DESIGNED BY: \_\_\_\_\_  
DRAWN BY: \_\_\_\_\_  
CHECKED BY: \_\_\_\_\_

P.W. NO. 10-30566  
CONTRACT NO. 90400

SHEET NO.

**CVR**

PAGE 1 OF 20

# EL DORADO COUNTY ACCESS CONTROL / CCTV / INTRUSION ALARM SYSTEM

## for the HUMAN SERVICES/ CHILD SUPPORT SERVICES / HEALTH SERVICES DEPARTMENTS PLACERVILLE AND SOUTH LAKE TAHOE- CONTRACT NO. 90400

### PROJECT NOTES

- LIST OF 2007 CALIFORNIA CODE OF REGULATIONS (CCR) APPLICABLE CODE AS OF JANUARY 1, 2008:  
  
2007 CALIFORNIA BUILDING STANDARDS ADMINISTRATIVE CODE, CCR, TITLE 24, PART 1  
2007 CALIFORNIA BUILDING CODE (CBC), CCR, TITLE 24, PART 2, VOLUMES 1 AND 2 (WITH 1997 UNIFORM BUILDING CODE OF THE INTERNATIONAL CONFERENCE OF BUILDING OFFICIALS)  
2007 CALIFORNIA ELECTRICAL CODE, CCR, TITLE 24, PART 3  
(WITH 1999 NATIONAL ELECTRICAL CODE OF NATIONAL FIRE PROTECTION ASSOCIATION (NFPA))  
2007 CALIFORNIA MECHANICAL CODE (CMC), CCR, TITLE 24, PART 4 (WITH 2000 UNIFORM MECHANICAL CODE OF INTERNATIONAL CONFERENCE OF BUILDING OFFICIALS)  
2007 CALIFORNIA PLUMBING CODE, CCR, TITLE 24, PART 5 (WITH 2000 UNIFORM PLUMBING CODE OF INTERNATIONAL ASSOCIATION OF PLUMBING AND MECHANICAL OFFICIALS)  
2007 CALIFORNIA ENERGY CODE, CCR, TITLE 24, PART 6  
2007 CALIFORNIA ELEVATOR SAFETY CONSTRUCTION CODE, CCR, TITLE 24, PART 7  
2007 CALIFORNIA HISTORICAL BUILDING CODE, CCR, TITLE 24, PART 8  
2007 CALIFORNIA FIRE CODE, CCR, TITLE 24, PART 9 (WITH 1997 UNIFORM FIRE CODE OF INTERNATIONAL CONFERENCE OF BUILDING OFFICIALS AND THE WESTERN FIRE CHIEFS ASSOCIATION)  
2007 CALIFORNIA CODE FOR BUILDING CONSERVATION, CCR, TITLE 24, PART 10, (WITH 1997 UNIFORM CODE FOR BUILDING CONSERVATION OF THE INTERNATIONAL CONFERENCE OF BUILDING OFFICIALS)  
2007 CALIFORNIA REFERENCED STANDARDS CODE, CCR, TITLE 24, PART 12  
PARTIAL LIST OF APPLICABLE NFPA STANDARDS:  
2007 CBC, CCR, TITLE 24, PART 2, VOL. 1, SECTION 3504.1.3 (FOR SFM) NATIONAL STANDARDS NFPA 72 - (CALIFORNIA AMENDED) NATIONAL FIRE ALARM CODES, 1996 EDITION.

- CHANGES TO THE APPROVED DRAWINGS AND SPECIFICATIONS SHALL BE MADE BY AN ADDENDA OR A CHANGE ORDER.
- TESTS AND TESTING LABORATORY PER SECT. 4-335. (OWNER SHALL PAY THE TESTING LABORATORY.)

### ABBREVIATIONS

A.B.	AGGREGATE BASE	(F)	FUTURE	MIN	MINIMUM	S.S.	STAINLESS STEEL
A.C.	ASPHALT CONCRETE	F.D.	FLOOR DRAIN	MISC	MISCELLANEOUS	STD	STANDARD
A/C	AIR CONDITIONING	F.E.	FIRE EXTINGUISHER	M.O.	MASONRY OPENING	STL	STEEL
ACC	ACCESSIBLE	F.E.C.	FIRE EXTINGUISHER CABINET	M.R.	MOISTURE RESISTANT	STOR	STORAGE
A.D.	AREA DRAIN	F.F.E.	FINISH FLOOR ELEVATION	(N)	NEW	STRUCT	STRUCTURAL
ADJ	ADJUSTABLE	F.G.	FINISH GRADE	N.I.C.	NOT IN CONTRACT	SUSP	SUSPENDED
A.F.F.	ABOVE FINISH FLOOR	F.H.	FIRE HYDRANT	NO.	NUMBER	SYM	SYMMETRICAL
ALT	ALTERNATE	F.H.W.S.	FLAT HEAD WOOD SCREW	N.O.C.	NUMBER		
ALUM	ALUMINUM	FIN.	FINISH	NOM	NOMINAL		
APPROX	APPROXIMATE	FLR	FLOOR			T&G	TONGUE & GROOVE
A.T.	ACOUSTIC TILE	FLUOR	FLUORESCENT	OBSC	OBSCURE	TEL	TELEPHONE
		F.O.F.	FACE OF FINISH	O.C.	ON CENTER	THK	THICK
		F.O.M.	FACE OF MASONRY	O.D.	OUTSIDE DIAMETER	T.O.	TOP OF
		F.O.S.	FACE OF STUD	OPP	OPPOSITE	T.O.C.	TOP OF CONCRETE
		FTG	FOOTING	OZ.	OUNCE	TYP	TYPICAL
		O.F.C.I.					
		O.F.O.I.				UBC	UNIFORM BUILDING CODE
BLDG	BUILDING	GA.	GAUGE			U.O.N.	UNLESS OTHERWISE NOTED
BLKG	BLOCKING	GALV	GALVANIZED			UNREINF	UNREINFORCED
B.O.	BOTTOM OF	GLB	GLUE LAMINATED BEAM			UR	URINAL
BOT	BOTTOM	G.S.M.	GALVANIZED SHEET METAL				
B.U.R.	BUILT UP ROOFING	GWB	GYPSUM WALLBOARD				
				PERF	PERFORATED	VCT	VINYL COMPOSITION TILE
CAB	CABINET			PL	PLATE	VERT	VERTICAL
CBC	CALIFORNIA BUILDING CODE	H.B.	HOSE BIBB	PLAS	PLASTIC	VEST.	VESTIBULE
C.J.	CONSTRUCTION JOINT	H.C.	HOLLOW CORE	PLUMB.	PLUMBING	WVC	VINYL WALL COVERING
CLG	CEILING	HDWR	HARDWARE	PLYWD	PLYWOOD		
CLR	CLEAR	HWWD	HARDWOOD	PMF	PRESSED METAL FRAME		
CMU	CONCRETE MASONRY UNIT	H.M.	HOLLOW METAL	PR	PAIR	W	WIDTH
C.O.	CLEAN OUT	HORIZ	HORIZONTAL	PSI	POUNDS PER SQUARE INCH	WC	WATER CLOSET
COL	COLUMN	HT	HEIGHT	P.T.	PRESSURE TREATED	WD	WOOD
COMP	COMPOSITION			Q.T.	QUARRY TILE	W.H.	WATER HEATER
CONT	CONTINUOUS	I.D.	INSIDE DIAMETER			WSCT	WAINSCOT
CONC	CONCRETE	INSUL	INSULATION	RAD	RADIUS	WT	WEIGHT
CTSK	COUNTERSUNK	INT	INTERIOR	RAM	RUBBERIZED ASPHALT MEMBRANE		
		JAN	JANITOR	R.D.	ROOF DRAIN		
D	DEPTH	JT	JOINT	REINF	REINFORCE		
DTL	DETAIL			REQ'D	REQUIRED		
D.F.	DRINKING FOUNTAIN			RM	ROOM		
DIA	DIAMETER	L	LENGTH	R.O.	ROUGH OPENING		
DIM	DIMENSION	LAM	LAMINATED	RWD	REDWOOD		
DN	DOWN	LAV	LAVATORY	RWL	RAIN WATER LEADER		
DS	DOWNSPOUT	LB.	POUND	R.H.W.S.	ROUND HEAD WOOD SCREW		
DW	DISHWASHER	L.S.	LAG SCREW				
DWG	DRAWING	LT	LIGHT	S.C.	SOLID CORE		
		MFR	MANUFACTURER	SHT	SHEET		
(E)	EXISTING	MAX	MAXIMUM	SIM	SIMILAR		
EA	EACH	MECH	MECHANICAL	S.M.S.	SHEET METAL SCREW		
E.J.	EXPANSION JOINT			SPEC	SPECIFICATION		
ELEC	ELECTRICAL			SQ	SQUARE		
ELEV	ELEVATION						
EQ.	EQUAL						
EQUIP.	EQUIPMENT						
EXT.	EXTERIOR						

### SYMBOLS

CLASSROOM	—ROOM NAME		(E) WALLS
	—ROOM NUMBER		(E) HALF WALLS
	—INTERIOR ELEVATIONS		(E) WINDOW
	—DETAIL NUMBER		
	—DRAWING NUMBER		
	—SECTION NUMBER		
	—DRAWING NUMBER		
(OR)			
	—SECTION NUMBER		
	—DRAWING NUMBER		
	—WALL ELEVATED(FILLED)		
	—ELEVATION NUMBER		
	—DRAWING NUMBER		
	—ELEVATION NUMBER		
	—DRAWING NUMBER		
	—KEYNOTE		
	—DOOR NUMBER		
	—WINDOW NUMBER		
	—WALL TYPE/NOMINAL THICKNESS		
	+9'-0" — INDICATES CEILING HEIGHT ABOVE F.F.E. ON REFL. CEILING PLAN		
	—FINISH KEY		
	—ELEVATION SYMBOL		
	—ROOF PITCH		
	2435.12 — NEW GRADE ELEVATION T.O.P.		
	—(E) GRADE ELEVATION		

**SYMBOLS**

&	AND
L	ANGLE
@	AT
C	CENTER LINE
O	DIAMETER
#	NUMBER
/	OVER
W	WITH

### SYMBOLS : SECURITY SYSTEM

	SECURITY - DOOR CONTACT SENSOR.		SECURITY - AUTOMATIC DOOR CLOSER.		SECURITY - AUDIO IMPACT SENSOR.		DOOR RELEASE BUTTON.		EXISTING ALARM HORN.
	SECURITY - EXISTING DOOR CONTACT SENSOR.		SECURITY - KEYPAD ACCESS CONTROL UNIT.		SECURITY - EXISTING COAXIAL CCTV CAMERA.		EXISTING DOOR RELEASE BUTTON.		EMERGENCY EGRESS DOOR HARDWARE
	SECURITY - ELECTRICALLY OPERATED LOCK.		SECURITY - EXIST. KEYPAD ACCESS CONTROL UNIT.		SECURITY - CCTV CAMERA-360° VIEW.		SECURITY AREA CONTROL PANEL.		DOOR OPEN DURING BUSINESS HRS. FOR SYSTEM PROGRAMMING. *SEE LOCATION FOR POSTED HRS.
	SECURITY - EXISTING ELECTRICALLY OPERATED LOCK.		SECURITY - CARD READER ACCESS CONTROL UNIT.		SECURITY - CCTV CAMERA-180° VIEW.		REMOTE DOOR RELEASE		
	SECURITY - MOTION DETECTOR 180°.		SECURITY - EXIST. CARD READER ACCESS CONTROL UNIT.		SECURITY - SWITCHABLE CCTV CAMERA.		EXISTING SECURITY AREA CONTROL PANEL.		
	SECURITY - EXISTING MOTION DETECTOR.		SECURITY - PANIC BUTTON UNIT.		PANIC BUTTON-CALL LIGHT				
	SECURITY - MOTION DETECTOR 360°.		SECURITY - EXISTING WIRELESS PANIC BUTTON UNITS.		PANIC BUTTON CONSOLE.				

REVISION	DATE	DESCRIPTION

ACCESS CONTROL/CCTV/  
INTRUSION ALARM SYSTEM  
SECURITY SYMBOLS & ABBREVIATIONS

MULTIPLE SITES  
EL DORADO COUNTY

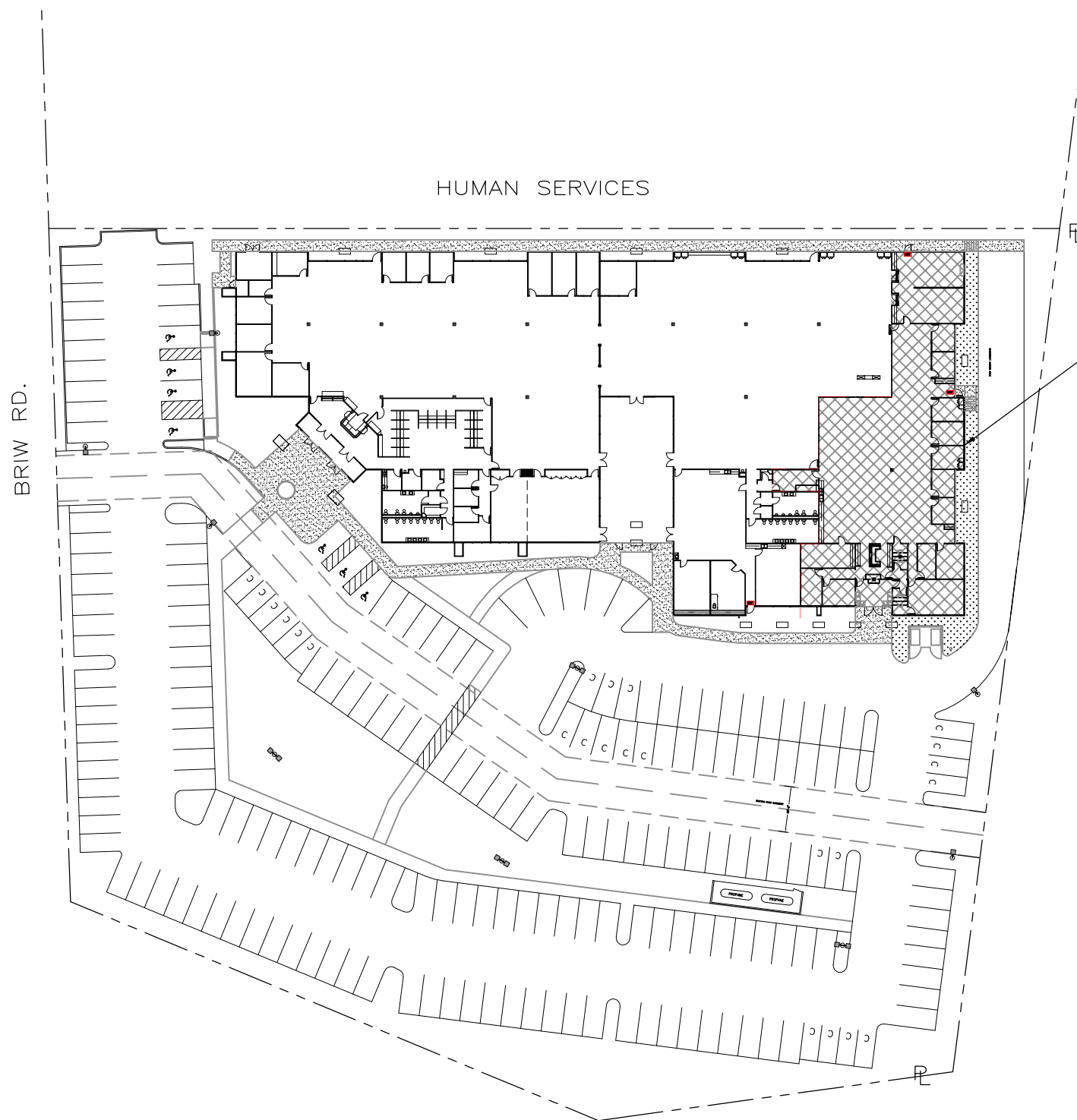
County of El Dorado  
Department of Transportation  
Facilities Engineering Division  
2850 Fair Lane Court Placerville, CA 95667 (530) 621-5900  
12/20/2010 7:49:34 AM, 1:2

THIS DRAWING IS NOT FINAL OR TO BE USED FOR CONSTRUCTION UNTIL IT IS SIGNED BY THE ARCHITECT/ENGINEER.

DATE:	12/03/10
DESIGNED BY:	
DRAWN BY:	
CHECKED BY:	
FILE #	
SEE PLOT STAMP	
PROJECT #	

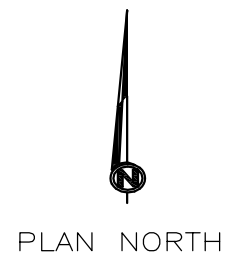
SHEET NO.  
**A 0.1**  
PAGE 2 OF 20

EL DORADO COUNTY  
**HUMAN SERVICES**  
 3057 BRIW RD. PLACERVILLE, CA



CHILD SUPPORT SERVICES  
 SEE SHT.'S CVR 2.0 & A 2.1

SCALE: 1/32"=1'-0"



FOR REDUCED PLANS 0 1/2 1 2 3 ORIGINAL SCALE IS IN INCHES

**OWNER**

**BRIW OFFICE INVESTORS**  
 P.O. BOX 2211  
 PLACERVILLE, CA 95667

TENANT IMPROVEMENTS BY:  
**EL DORADO COUNTY**  
 DEPARTMENT OF TRANSPORTATION  
 FACILITIES ENGINEERING DIVISION

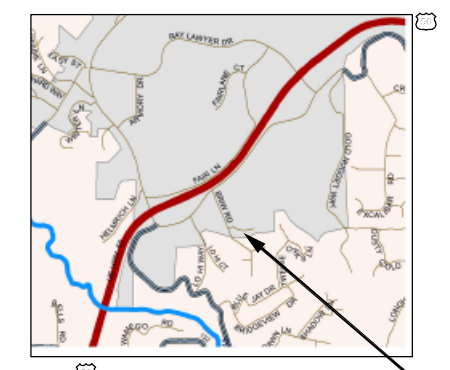
JAMES WARE, DIRECTOR  
 2850 FAIRLANE CT.  
 PLACERVILLE, CA 95667

REVISION	DATE	DESCRIPTION

ACCESS CONTROL/CCTV/  
 INTRUSION ALARM SYSTEM  
 COVER & SITE PLAN

HUMAN SERVICES  
 3057 BRIW ROAD  
 PLACERVILLE, CA 95667

**PROJECT LOCATION**



VICINITY MAP  
 NOT TO SCALE

County of El Dorado  
 Department of Transportation  
 Facilities Engineering Division

2850 Fair Lane Court Placerville, CA 95667 (530) 621-5900  
 G:\FED\Bldgs-Lsd\3057 Briw Rd\Security System Upgrades\CADD Files\Improvement Plans\security-upgrades-Human-Svcs.dwg 12/17/2010 2:13:39 PM, 1:2

THIS DRAWING IS NOT FINAL OR TO BE USED FOR CONSTRUCTION UNTIL IT IS SIGNED BY THE ARCHITECT/ENGINEER.

**PROJECT DATA:**

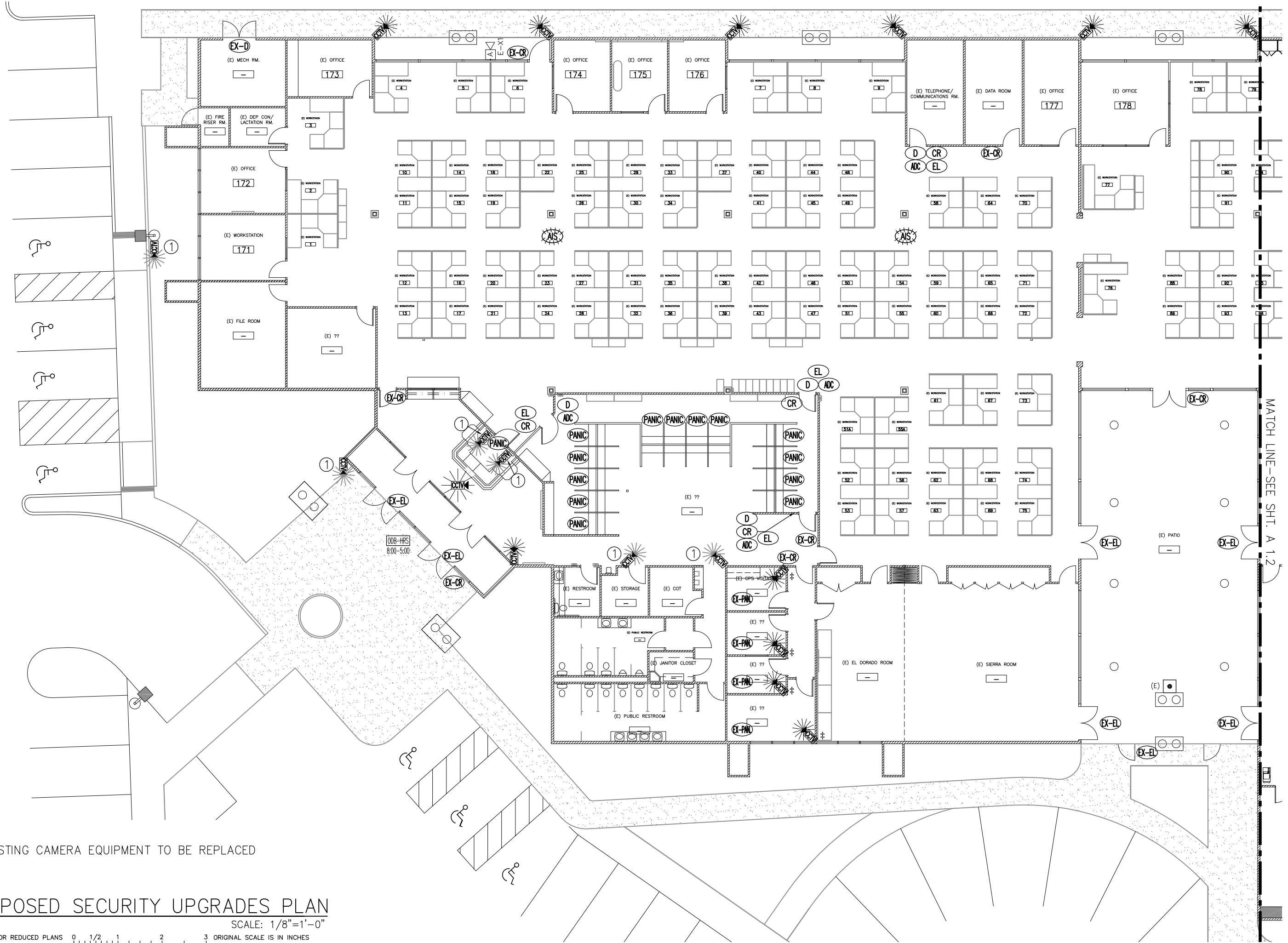
**MAIN BUILDING DATA**

TYPE OF CONSTRUCTION : ?  
 OCCUPANCY GROUP : ?  
 AREA (ENTIRE BUILDING) : 38,876 S.F.  
 LOAD FACTOR : XX  
 OCCUPANCY : ? PEOPLE  
 A.P.N. : 325:310:28&29

**FIRE DEPARTMENT DATA**

EXISTING BUILDING : SPRINKLERED

DATE:	12/03/10
DESIGNED BY:	
DRAWN BY:	SR
CHECKED BY:	DL
FILE #	SEE PLOT STAMP
PROJECT #	90400
SHEET NO.	CVR 1.0
PAGE	3 OF 20



NOTE:  
 ① EXISTING CAMERA EQUIPMENT TO BE REPLACED

**PROPOSED SECURITY UPGRADES PLAN**

SCALE: 1/8"=1'-0"  
 FOR REDUCED PLANS 0 1/2 1 2 3 ORIGINAL SCALE IS IN INCHES

REVISION	DATE	DESCRIPTION

**ACCESS CONTROL/CCTV/  
 INTRUSION ALARM SYSTEM  
 SECURITY UPGRADE PLAN**

**HUMAN SERVICES  
 3057 BRIW ROAD  
 PLACERVILLE, CA 95667**

**County of El Dorado  
 Department of Transportation  
 Facilities Engineering Division**

2850 Fair Lane Court Placerville, CA 95667 (530) 621-5900  
 G:\FED\Bldgs-Lca\3057 Brw Rd\Projects\90400 - 3057 Brw Rd Security System Upgrades\CADD Files\Improvement Plans\Security-upgrades-Human-Svcs.dwg - 12/21/2010 8:14:00 AM, 1.2

THIS DRAWING IS NOT FINAL OR TO BE USED FOR CONSTRUCTION UNTIL IT IS SIGNED BY THE ARCHITECT/ENGINEER.

DATE:	12/03/10
DESIGNED BY:	
DRAWN BY:	
CHECKED BY:	
FILE #	SEE PLOT STAMP
PROJECT #	90400
SHEET NO.	<b>A 1.1</b>
PAGE	4 OF 20

CONTRACT NO. PW 10-30566 CIP NO. 90400

 = CHILD SUPPORT SERVICES AREA.  
SEE SHEET A 2.1 FOR WORK IN THIS AREA.



PLAN NORTH

HUMAN SERVICES—EAST SIDE  
PROPOSED SECURITY UPGRADES PLAN  
SCALE: 1/8"=1'-0"

NOTE:

- ② THIS CARD READER IS CONNECTED TO THE EXISTING ACCESS CONTROL SYSTEM FOR CHILD SUPPORT SERVICES DEPARTMENT.

FOR REDUCED PLANS 0 1/2 1 2 3 ORIGINAL SCALE IS IN INCHES

CONTRACT NO. PW 10-30566 CIP NO. 90400

REVISION	DATE	DESCRIPTION

ACCESS CONTROL/CCTV/  
INTRUSION ALARM SYSTEM  
SECURITY UPGRADE PLAN

HUMAN SERVICES  
3057 BRIW ROAD  
PLACERVILLE, CA 95667

County of El Dorado  
Department of Transportation  
Facilities Engineering Division  
2850 Fair Lane Court Placerville, CA 95667 (530) 621-5900  
G:\FED\Bldgs-Lca\3057 Briw Rd\Projects\90400 - 3057 Briw Rd Security System Upgrades\CADD Files\Improvement Plans\Security-upgrades-Human-Svcs.dwg 12/21/2010 8:14:36 AM, 1:2

THIS DRAWING IS NOT FINAL OR TO BE USED FOR CONSTRUCTION UNTIL IT IS SIGNED BY THE ARCHITECT/ENGINEER.

DATE: 12/03/10

DESIGNED BY: T  
DRAWN BY: SB  
CHECKED BY: DL

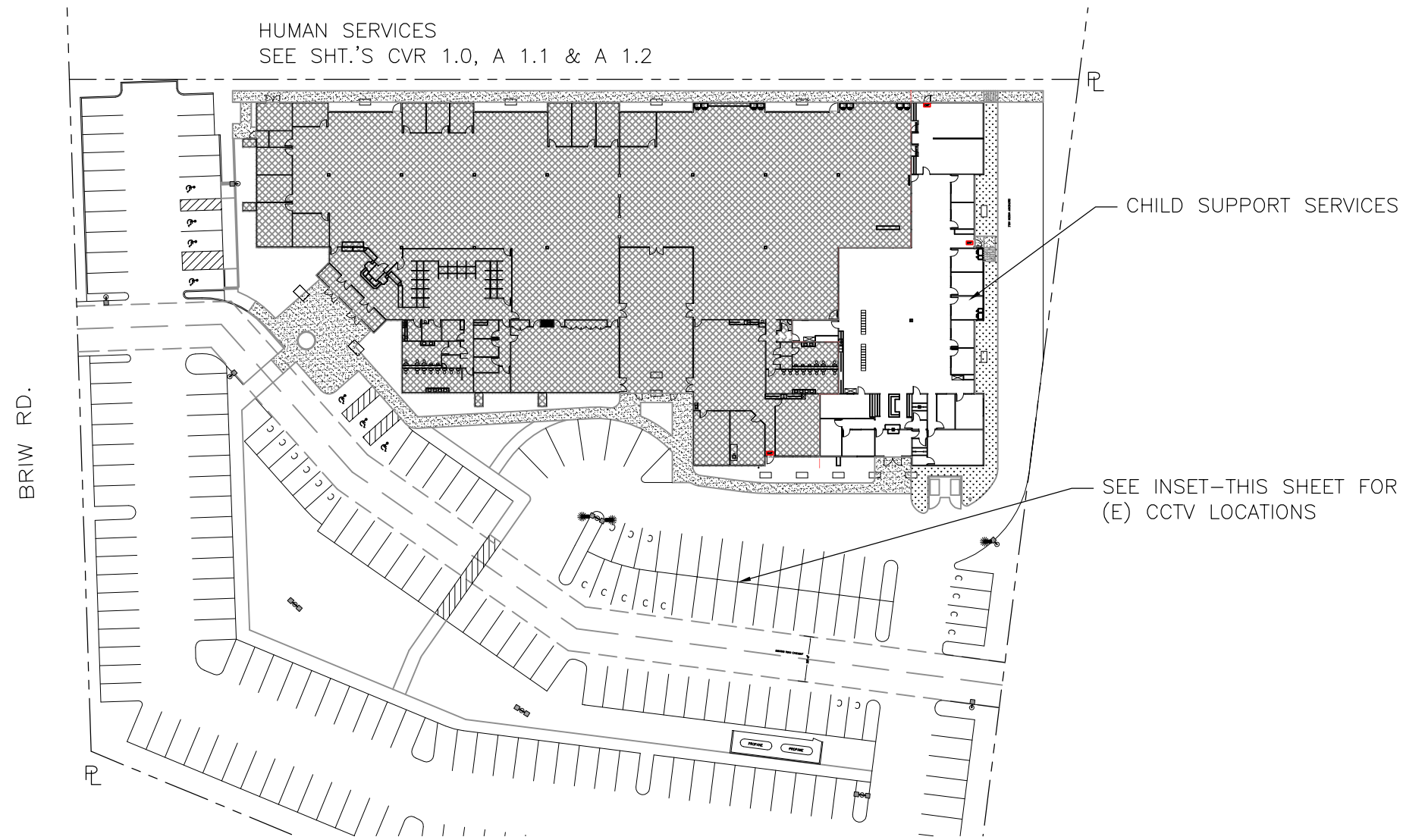
FILE #  
SEE PLOT STAMP  
PROJECT # 90400

SHEET NO.

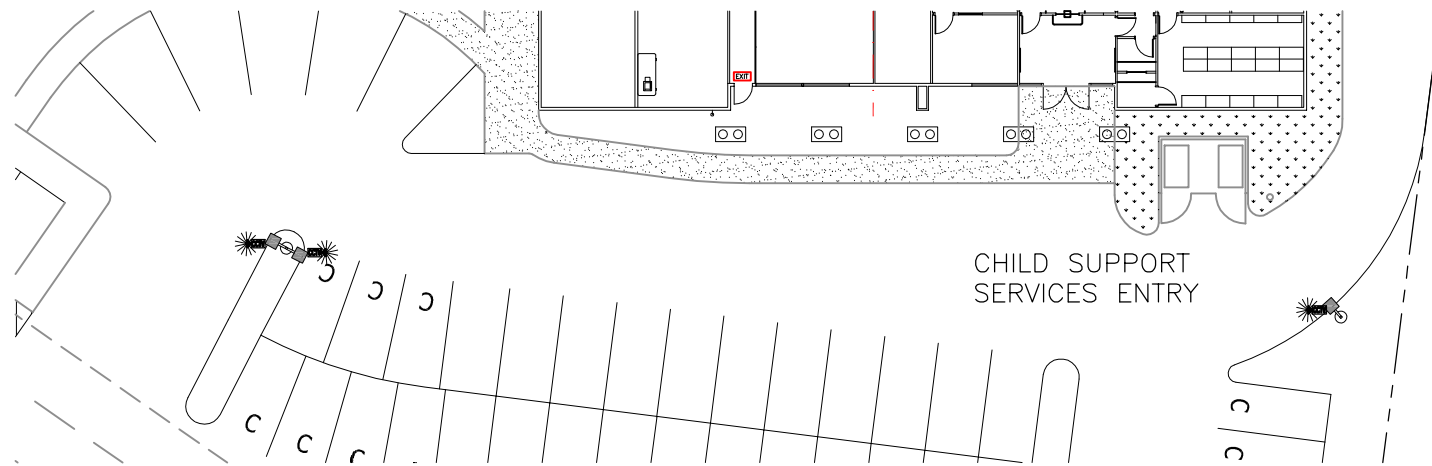
**A 1.2**

PAGE 5 OF 20

EL DORADO COUNTY  
**CHILD SUPPORT SERVICES**  
 3057 BRIW RD. PLACERVILLE, CA



SCALE: 1/32"=1'-0"



SCALE: 1/16"=1'-0"

FOR REDUCED PLANS 0 1/2 1 2 3 ORIGINAL SCALE IS IN INCHES

**OWNER**

**BRIW OFFICE INVESTORS**

P.O. BOX 2211  
 PLACERVILLE, CA 95667

TENANT IMPROVEMENTS BY:  
**EL DORADO COUNTY  
 DEPARTMENT OF TRANSPORTATION  
 FACILITIES ENGINEERING DIVISION**

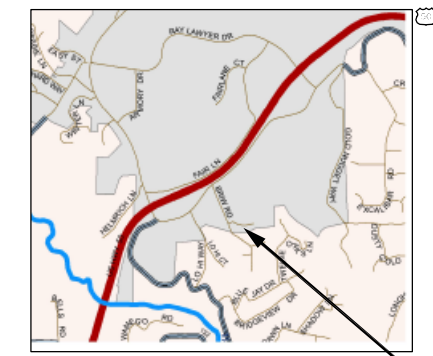
JAMES WARE, DIRECTOR  
 2850 FAIRLANE CT.  
 PLACERVILLE, CA 95667

REVISION	DATE	DESCRIPTION

ACCESS CONTROL/CCTV/  
 INTRUSION ALARM SYSTEM  
 COVER & SITE PLAN

CHILD SUPPORT SERVICES  
 3057 BRIW ROAD  
 PLACERVILLE, CA 95667

**PROJECT LOCATION**



VICINITY MAP  
 NOT TO SCALE

3057 BRIW RD.

County of El Dorado  
 Department of Transportation  
 Facilities Engineering Division



2850 Fair Lane Court Placerville, CA 95667 (530) 621-5900  
 G:\FED\Bldgs-Lst\3057 Briw Rd\Projects\90400 - 3057 Briw Rd Security System Upgrades\CADD Files\Improvement Plans\Security-upgrades-Child-Support-Svcs.dwg, 12/21/2010 2:02:42 PM, 1:2

THIS DRAWING IS NOT FINAL OR TO BE USED FOR CONSTRUCTION UNTIL IT IS SIGNED BY THE ARCHITECT/ENGINEER.

**PROJECT DATA:**

**MAIN BUILDING DATA**

TYPE OF CONSTRUCTION : ?  
 OCCUPANCY GROUP : ?  
 AREA (ENTIRE BUILDING) : 38,876 S.F.  
 LOAD FACTOR : XX  
 OCCUPANCY : ? PEOPLE  
 A.P.N. : 325:310:28&29

**FIRE DEPARTMENT DATA**

EXISTING BUILDING : SPRINKLERED

DATE: 12/03/10

DESIGNED BY: L

DRAWN BY: SB

CHECKED BY: DL

FILE #

SEE PLOT STAMP

PROJECT #

90400

SHEET NO.

**CVR 2.0**

PAGE 6 OF 20

CONTRACT NO. PW 10-30566

CIP NO. 90400



REVISION	DATE	DESCRIPTION

ACCESS CONTROL/CCTV/  
INTRUSION ALARM SYSTEM  
SECURITY UPGRADE PLAN

HUMAN SERVICES  
3057 BRIW ROAD  
PLACERVILLE, CA 95667

County of El Dorado  
Department of Transportation  
Facilities Engineering Division  
2850 Fair Lane Court Placerville, CA 95667 (530) 621-5900

THIS DRAWING IS NOT FINAL OR TO BE USED FOR CONSTRUCTION UNTIL IT IS SIGNED BY THE ARCHITECT/ENGINEER.

DATE: 12/03/10

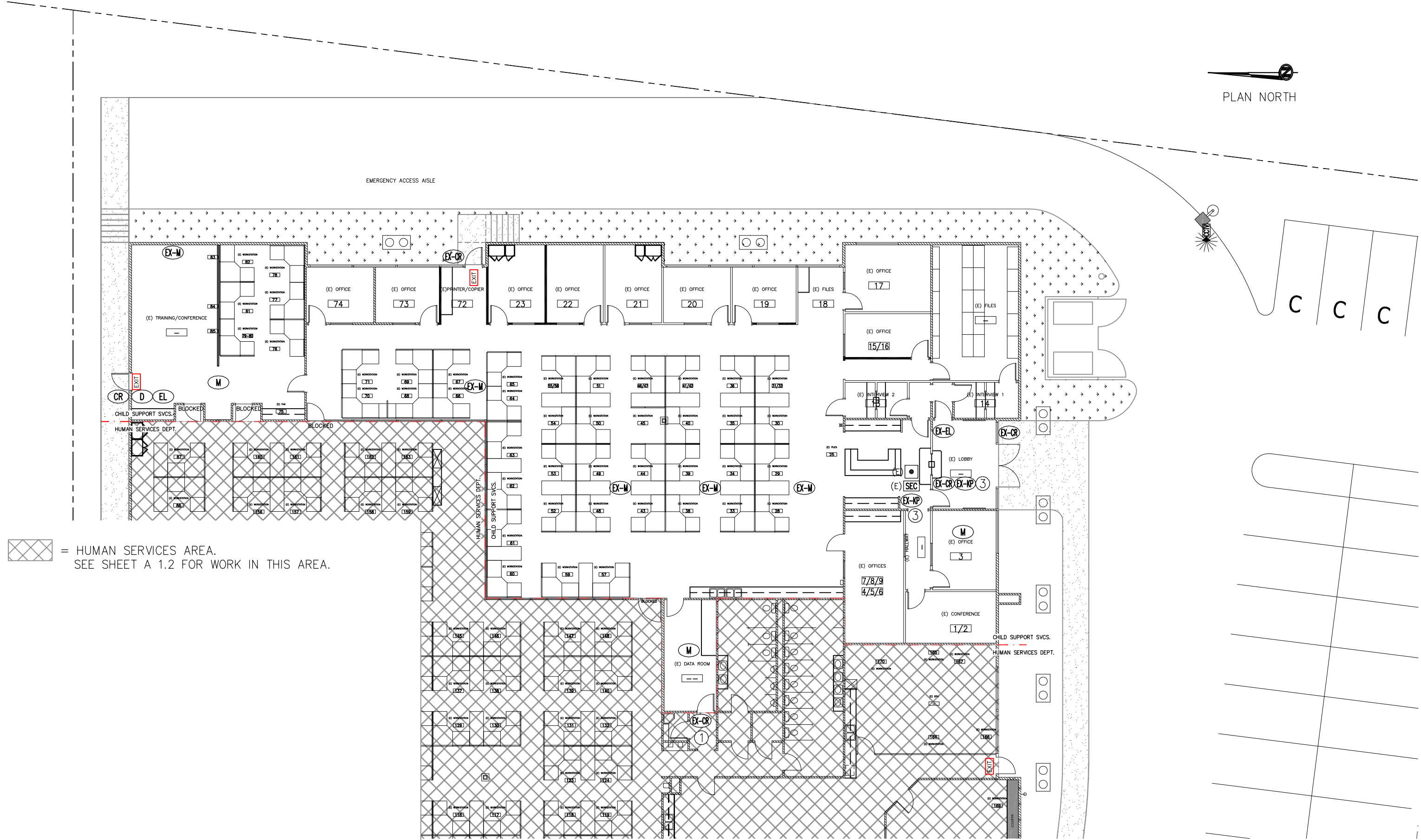
DESIGNED BY: T  
DRAWN BY: SB  
CHECKED BY: DL  
FILE #  
SEE PLOT STAMP  
PROJECT # 90400

SHEET NO.

**A 2.1**

PAGE 7 OF 20

G:\FED\Bligs-Lsd\3057 Briw Rd\Projects\90400 - 3057 Briw Rd Security System Upgrades\CADD Files\Improvement Plans\Security-upgrades-Child-Support-Svcs.dwg, 12/21/2010 12:15:36 PM, 1:2



= HUMAN SERVICES AREA.  
SEE SHEET A 1.2 FOR WORK IN THIS AREA.

- NOTES:
- THIS CARD READER IS CONNECTED TO THE EXISTING ACCESS CONTROL SYSTEM FOR CHILD SUPPORT SERVICES DEPARTMENT.
  - CHILD SUPPORT SERVICES CURRENTLY HAS 3 PARKING LOT CCTV CAMERAS. SEE CVR 2.0 FOR LOCATIONS.
  - EXISTING KEYPAD TO BE REMOVED.

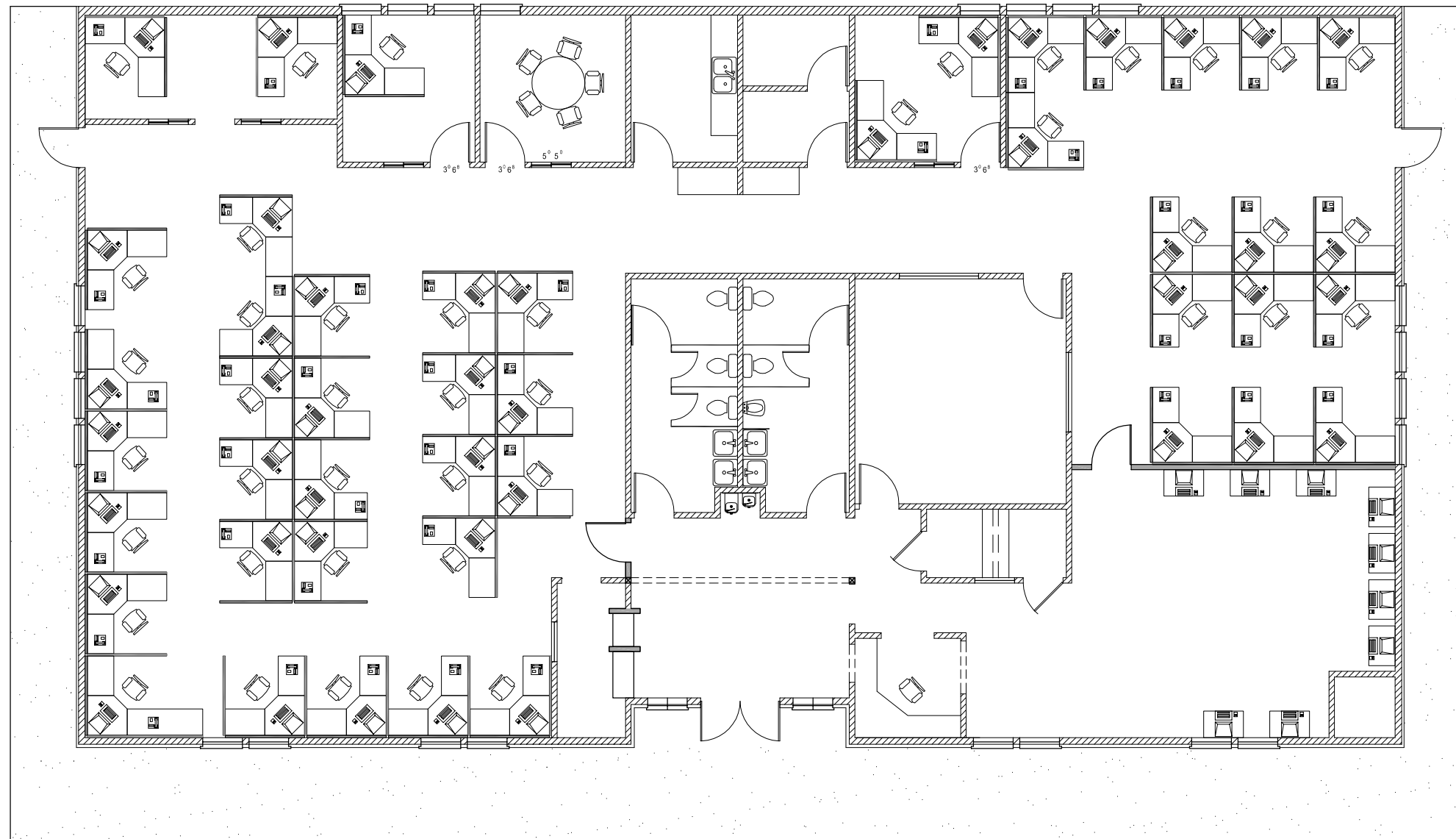
**PROPOSED SECURITY UPGRADES PLAN**

SCALE: 1/8"=1'-0"

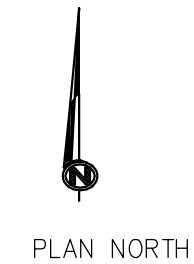
FOR REDUCED PLANS 0 1/2 1 2 3 ORIGINAL SCALE IS IN INCHES

CONTRACT NO. PW 10-30566 CIP NO. 90400

EL DORADO COUNTY  
**HUMAN SERVICES**  
 3047 BRIW RD. PLACERVILLE, CA



SCALE: 3/16"=1'-0"



FOR REDUCED PLANS 0 1/2 1 2 3 ORIGINAL SCALE IS IN INCHES

**OWNER**

WESLEY L. WILKINSON TR.  
 P.O. BOX 992  
 PLACERVILLE, CA 95667

TENANT IMPROVEMENTS BY:  
 EL DORADO COUNTY  
 DEPARTMENT OF TRANSPORTATION  
 FACILITIES ENGINEERING DIVISION

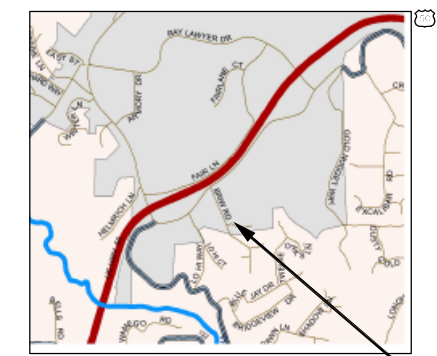
JAMES WARE, DIRECTOR  
 2850 FAIRLANE CT.  
 PLACERVILLE, CA 95667

REVISION	DATE	DESCRIPTION

ACCESS CONTROL/CCTV/  
 INTRUSION ALARM SYSTEM  
 COVER & SITE PLAN

HUMAN SERVICES  
 3047 BRIW RD.  
 PLACERVILLE, CA 95667

**PROJECT LOCATION**



VICINITY MAP  
 NOT TO SCALE

County of El Dorado  
 Department of Transportation  
 Facilities Engineering Division  
 2850 Fair Lane Court Placerville, CA 95667 (530) 621-5900

THIS DRAWING IS NOT FINAL OR  
 TO BE USED FOR CONSTRUCTION  
 UNTIL IT IS SIGNED BY THE  
 ARCHITECT/ENGINEER.

**PROJECT DATA:**

**MAIN BUILDING DATA**

TYPE OF CONSTRUCTION : ?  
 OCCUPANCY GROUP : ?  
 AREA (ENTIRE BUILDING) : 5,571 S.F.  
 LOAD FACTOR : XX  
 OCCUPANCY : ? PEOPLE  
 A.P.N. : 325:310:93

**FIRE DEPARTMENT DATA**

EXISTING BUILDING : SPRINKLERED

DATE:	12/03/10
DESIGNED BY:	
DRAWN BY:	SR
CHECKED BY:	DL
FILE #	
SEE PLOT STAMP	
PROJECT #	

SHEET NO.

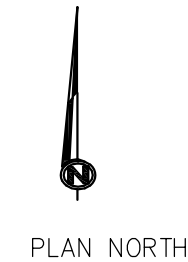
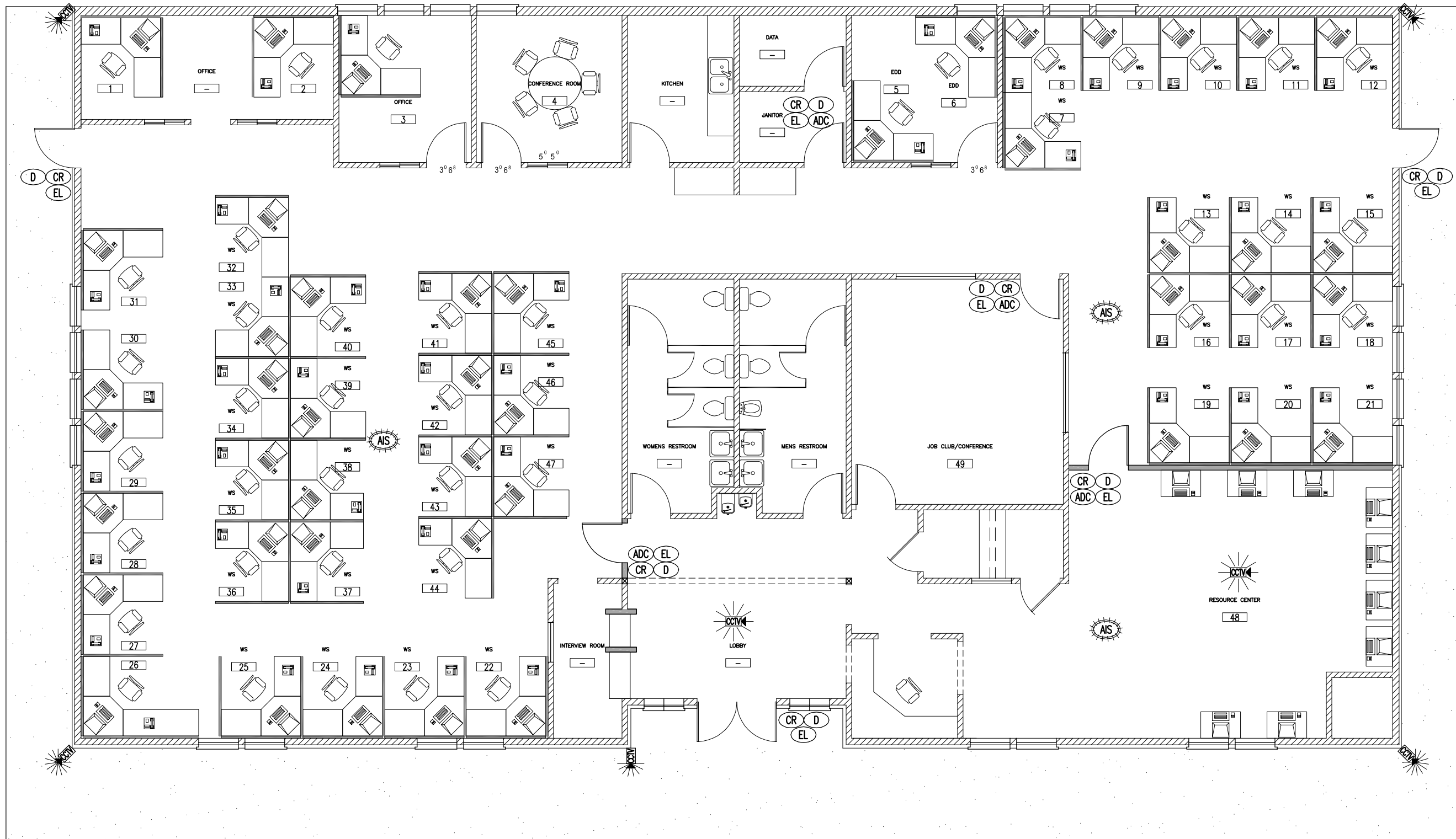
**CVR 3.0**

PAGE 8 OF 20

CONTRACT NO. PW 10-30566 CIP NO. 90400

G:\FED\Bldgs-Lsd\3047 Briw Rd\Projects\90400 - Security System\CADD Files\Improvement Plans\security-upgrades.dwg - 12/21/2010 1:37:25 PM - 1/2





**PROPOSED SECURITY UPGRADES PLAN**  
SCALE: 1/4"=1'-0"

FOR REDUCED PLANS 0 1/2 1 2 3 ORIGINAL SCALE IS IN INCHES

CONTRACT NO. PW 10-30566 CIP NO. 90400

REVISION	DATE	DESCRIPTION

**ACCESS CONTROL/CCTV/  
INTRUSION ALARM SYSTEM  
SECURITY UPGRADE PLAN**

**HUMAN SERVICES  
3047 BRIW RD.  
PLACERVILLE, CA 95667**

**County of El Dorado**  
Department of Transportation  
Facilities Engineering Division  
2850 Fair Lane Court Placerville, CA 95667 (530) 621-5900  
G:\FED\Bldgs-Lsd\3047 Briw Rd\Security System\Drawings\90400 - Security System\CADD Files\Improvement Plans\security-upgrades.dwg, 12/21/2010 1:38:09 PM, 1:2

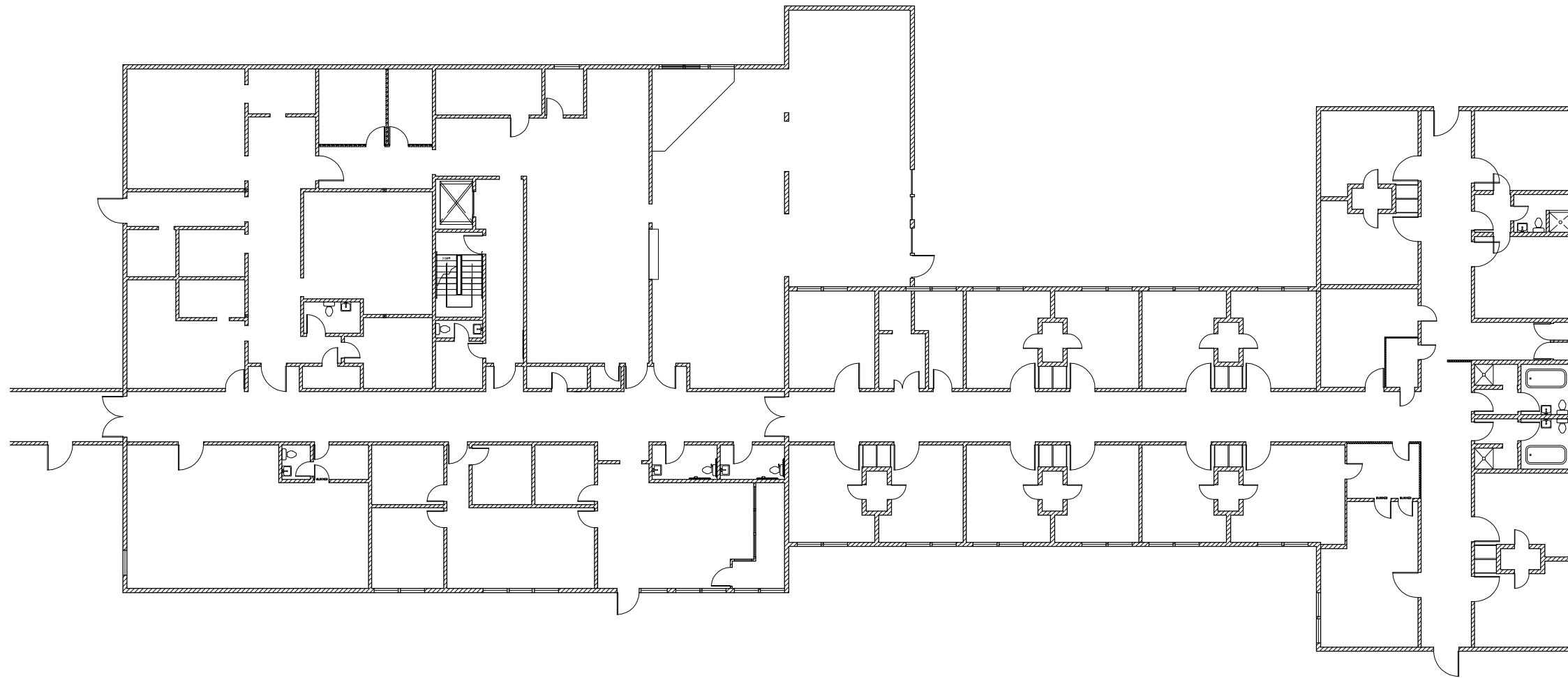
THIS DRAWING IS NOT FINAL OR TO BE USED FOR CONSTRUCTION UNTIL IT IS SIGNED BY THE ARCHITECT/ENGINEER.

DATE: 12/03/10  
DESIGNED BY: L  
DRAWN BY: SB  
CHECKED BY: DL  
FILE #  
SEE PLOT STAMP  
PROJECT #

SHEET NO.  
**A 3.1**

PAGE 9 OF 20

EL DORADO COUNTY  
**HUMAN SERVICES**  
 937 SPRING ST. PLACERVILLE, CA



PLAN NORTH

SCALE: 3/32" = 1'-0"

FOR REDUCED PLANS 0 1/2 1 2 3 ORIGINAL SCALE IS IN INCHES

**OWNER**

EL DORADO COUNTY  
 360 FAIR LANE  
 PLACERVILLE, CA 95667

TENANT IMPROVEMENTS BY:  
 EL DORADO COUNTY  
 DEPARTMENT OF TRANSPORTATION  
 FACILITIES ENGINEERING DIVISION

JAMES WARE, DIRECTOR  
 2850 FAIRLANE CT.  
 PLACERVILLE, CA 95667

REVISION	DATE	DESCRIPTION

ACCESS CONTROL/CCTV/  
 INTRUSION ALARM SYSTEM  
 COVER & SITE PLAN

HUMAN SERVICES  
 937 SPRING STREET  
 PLACERVILLE, CA 95667

**PROJECT LOCATION**

937 SPRING ST.



VICINITY MAP  
 NOT TO SCALE

County of El Dorado  
 Department of Transportation  
 Facilities Engineering Division  
 2850 Fair Lane Court Placerville, CA 95667 (530) 621-5900



THIS DRAWING IS NOT FINAL OR  
 TO BE USED FOR CONSTRUCTION  
 UNTIL IT IS SIGNED BY THE  
 ARCHITECT / ENGINEER.

**PROJECT DATA:**

**MAIN BUILDING DATA**

TYPE OF CONSTRUCTION : ?  
 OCCUPANCY GROUP : ?  
 AREA (ENTIRE BUILDING) : 16,858 S.F.  
 LOAD FACTOR : XX  
 OCCUPANCY : ? PEOPLE  
 A.P.N. : 001:071:15

**FIRE DEPARTMENT DATA**

EXISTING BUILDING : SPRINKLERED

DATE: 12/03/10

DESIGNED BY: [Signature]  
 DRAWN BY: [Signature]  
 CHECKED BY: [Signature]

FILE #  
 SEE PLOT STAMP  
 PROJECT #

SHEET NO.

**CVR 4.0**

PAGE 10 OF 20

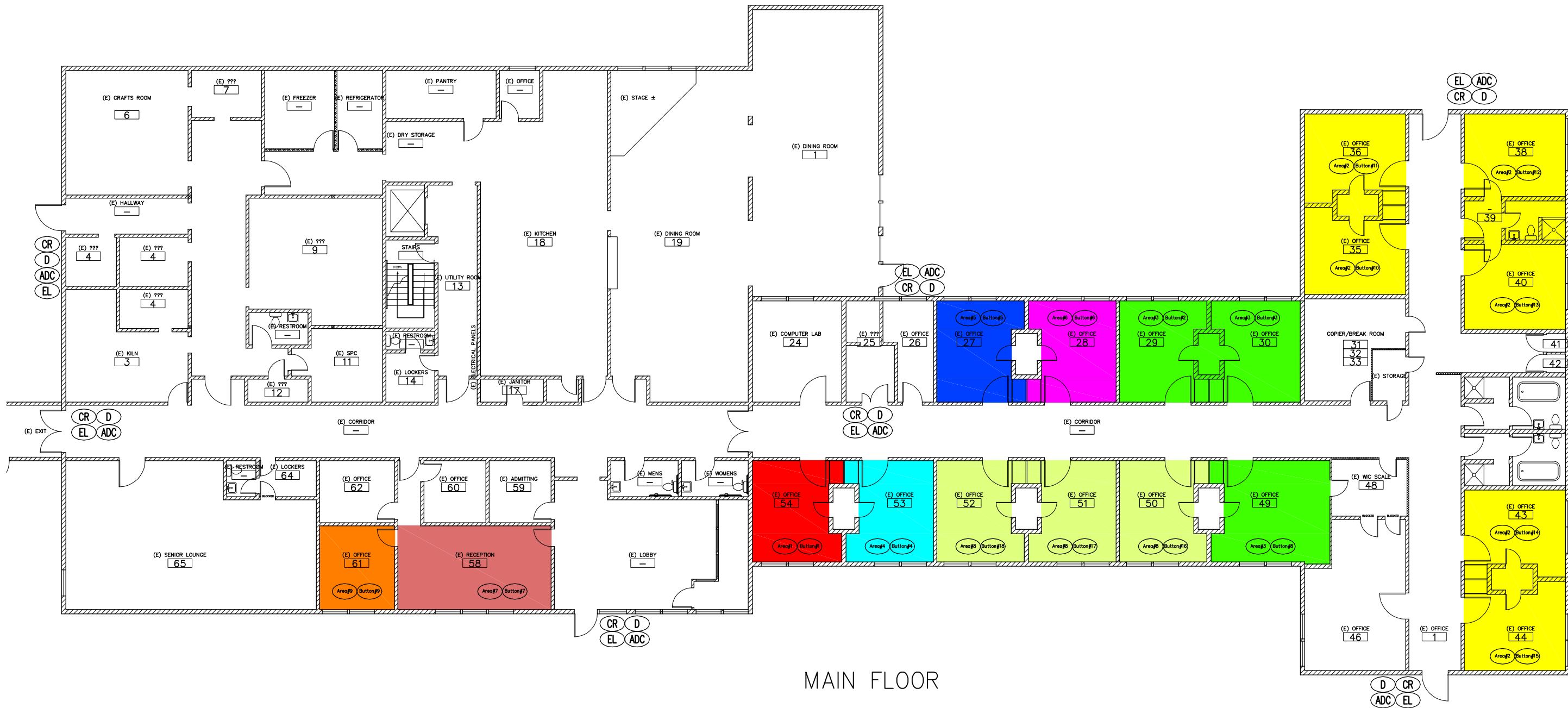
CONTRACT NO. PW 10-30566 CIP NO. 90400

G:\FED\Bldgs\440A-Placerville Community Services Facility\Projects\wo#-PW#-Security Upgrades\Drawings\WO#-Security Upgrades\CADD Files\Improvement Plans\Security-upgrades-2010.dwg, 12/21/2010 2:12:38 PM, 1:2

# LEGEND: EXISTING SYSTEM

- = ZONE OR AREA #1
- = ZONE OR AREA #2
- = ZONE OR AREA #3
- = ZONE OR AREA #4
- = ZONE OR AREA #5
- = ZONE OR AREA #6
- = ZONE OR AREA #7
- = ZONE OR AREA #8
- = ZONE OR AREA #9

**NOTE:**  
EXISTING SYSTEM TO BE INCORPORATED INTO NEW ALARM SYSTEM



MAIN FLOOR



## PROPOSED SECURITY UPGRADES PLAN

SCALE: 1/8" = 1'-0"

FOR REDUCED PLANS 0 1/2 1 2 3 ORIGINAL SCALE IS IN INCHES

REVISION	DATE	DESCRIPTION

ACCESS CONTROL/CCTV/  
INTRUSION ALARM SYSTEM  
SECURITY UPGRADE PLAN

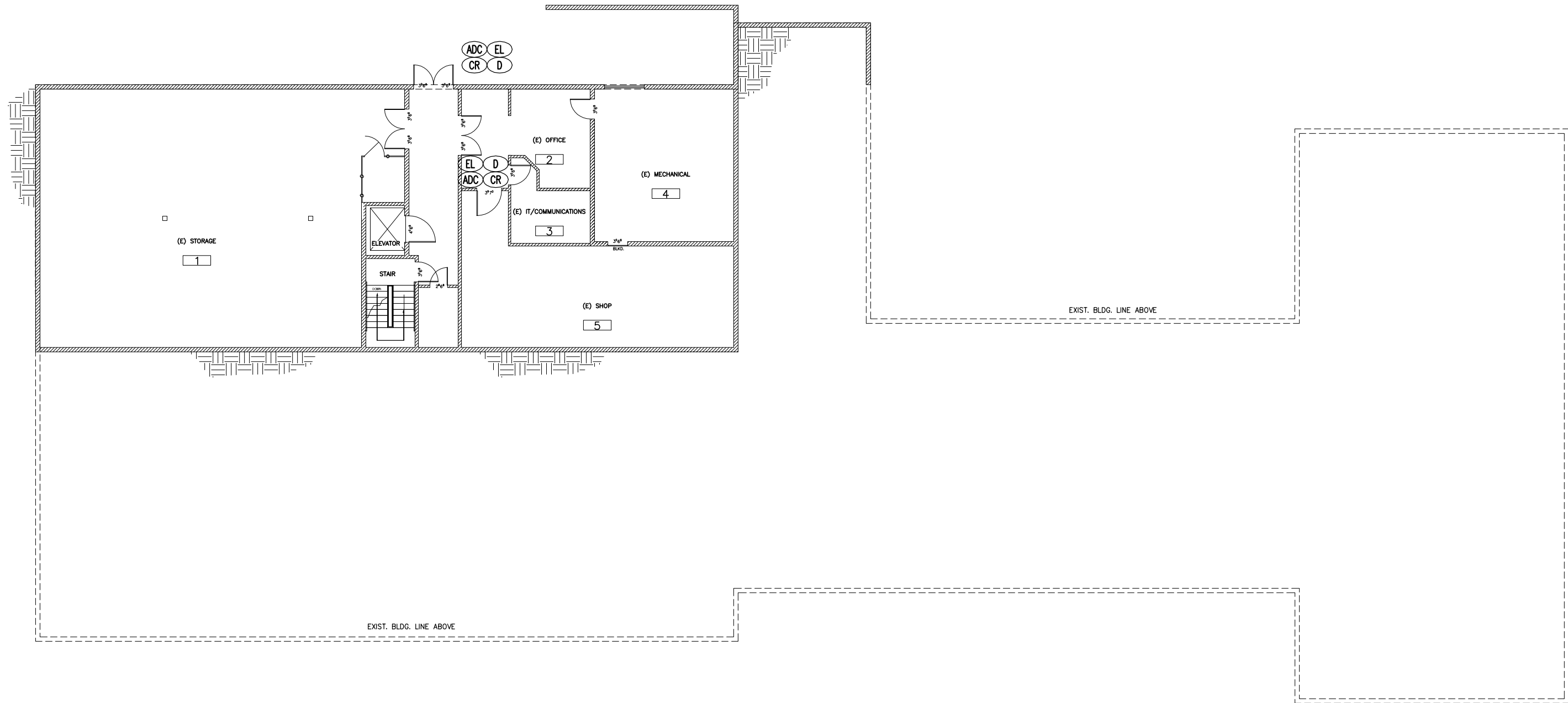
HUMAN SERVICES  
937 SPRING STREET  
PLACERVILLE, CA 95667

County of El Dorado  
Department of Transportation  
Facilities Engineering Division  
2850 Fair Lane Court Placerville, CA 95667 (530) 621-5900

THIS DRAWING IS NOT FINAL OR TO BE USED FOR CONSTRUCTION UNTIL IT IS SIGNED BY THE ARCHITECT/ENGINEER.

DATE:	12/03/10
DESIGNED BY:	T
DRAWN BY:	SB
CHECKED BY:	DL
FILE #	SEE PLOT STAMP
PROJECT #	

SHEET NO.  
**A 4.1**



BASEMENT LEVEL

**PROPOSED SECURITY UPGRADES PLAN**  
SCALE: 1/8"=1'-0"

FOR REDUCED PLANS 0 1/2 1 2 3 ORIGINAL SCALE IS IN INCHES



REVISION	DATE	DESCRIPTION

**ACCESS CONTROL/CCTV/  
INTRUSION ALARM SYSTEM  
SECURITY UPGRADE PLAN**

**HUMAN SERVICES  
937 SPRING STREET  
PLACERVILLE, CA 95667**

**County of El Dorado**  
Department of Transportation  
Facilities Engineering Division  
2850 Fair Lane Court Placerville, CA 95667 (530) 621-5900

THIS DRAWING IS NOT FINAL OR TO BE USED FOR CONSTRUCTION UNTIL IT IS SIGNED BY THE ARCHITECT/ENGINEER.

DATE: 12/03/10

DESIGNED BY: L  
DRAWN BY: SB  
CHECKED BY: DL

FILE #  
SEE PLOT STAMP  
PROJECT #

SHEET NO.

**A 4.2**

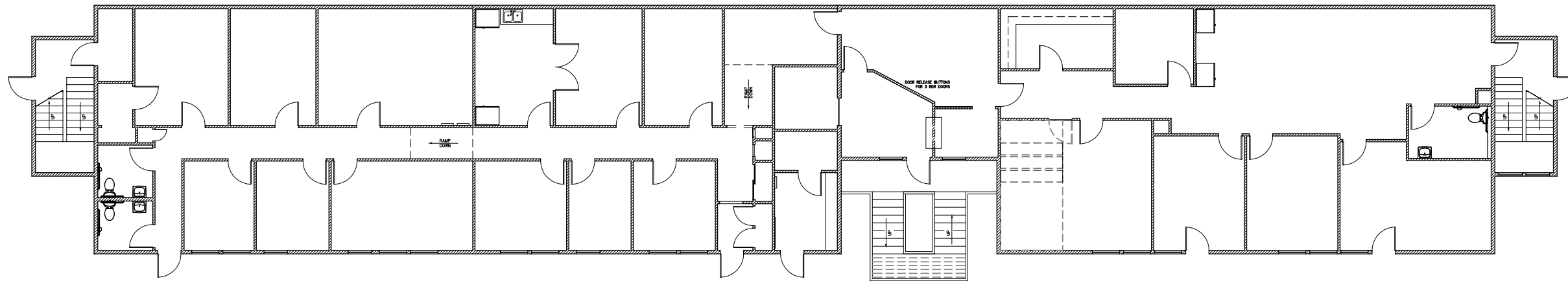
PAGE 12 OF 20

CONTRACT NO. PW 10-30566 CIP NO. 90400

G:\FED\Bldgs\440A-Placerville Community Services Facility\Projects\wo#\PW#\Security Upgrades\Drawings\WO#\Security Upgrades\CADD Files\Improvement Plans\Security-upgrades-2010.dwg, 12/21/2010 2:13:51 PM, 1/2

EL DORADO COUNTY  
**HEALTH SERVICES**  
 670 PLACERVILLE DR. PLACERVILLE, CA

PLACERVILLE DR.



HANGTOWN CREEK

PLAN NORTH

SCALE: 1/8" = 1'-0"

FOR REDUCED PLANS 0 1/2 1 2 3 ORIGINAL SCALE IS IN INCHES

**OWNER**

**GOLDEN PLAZA 1 LLC**

P.O. BOX 188321  
 SACRAMENTO, CA 95818

TENANT IMPROVEMENTS BY:  
 EL DORADO COUNTY  
 DEPARTMENT OF TRANSPORTATION  
 FACILITIES ENGINEERING DIVISION

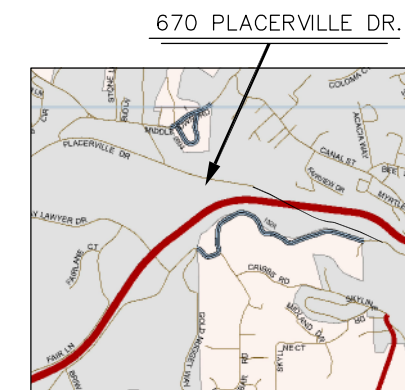
JAMES WARE, DIRECTOR  
 2850 FAIRLANE CT.  
 PLACERVILLE, CA 95667

REVISION	DATE	DESCRIPTION

ACCESS CONTROL/CCTV/  
 INTRUSION ALARM SYSTEM  
 COVER & SITE PLAN

HEALTH SERVICES  
 670 PLACERVILLE DR.  
 PLACERVILLE, CA 95667

**PROJECT LOCATION**



VICINITY MAP  
 NOT TO SCALE

County of El Dorado  
 Department of Transportation  
 Facilities Engineering Division  
 2850 Fair Lane Court Placerville, CA 95667 (530) 621-5900

THIS DRAWING IS NOT FINAL OR  
 TO BE USED FOR CONSTRUCTION  
 UNTIL IT IS SIGNED BY THE  
 ARCHITECT / ENGINEER.

DATE: 12/03/10

DESIGNED BY: L  
 DRAWN BY: SB  
 CHECKED BY: DL

SHEET NO.

**CVR 5.0**

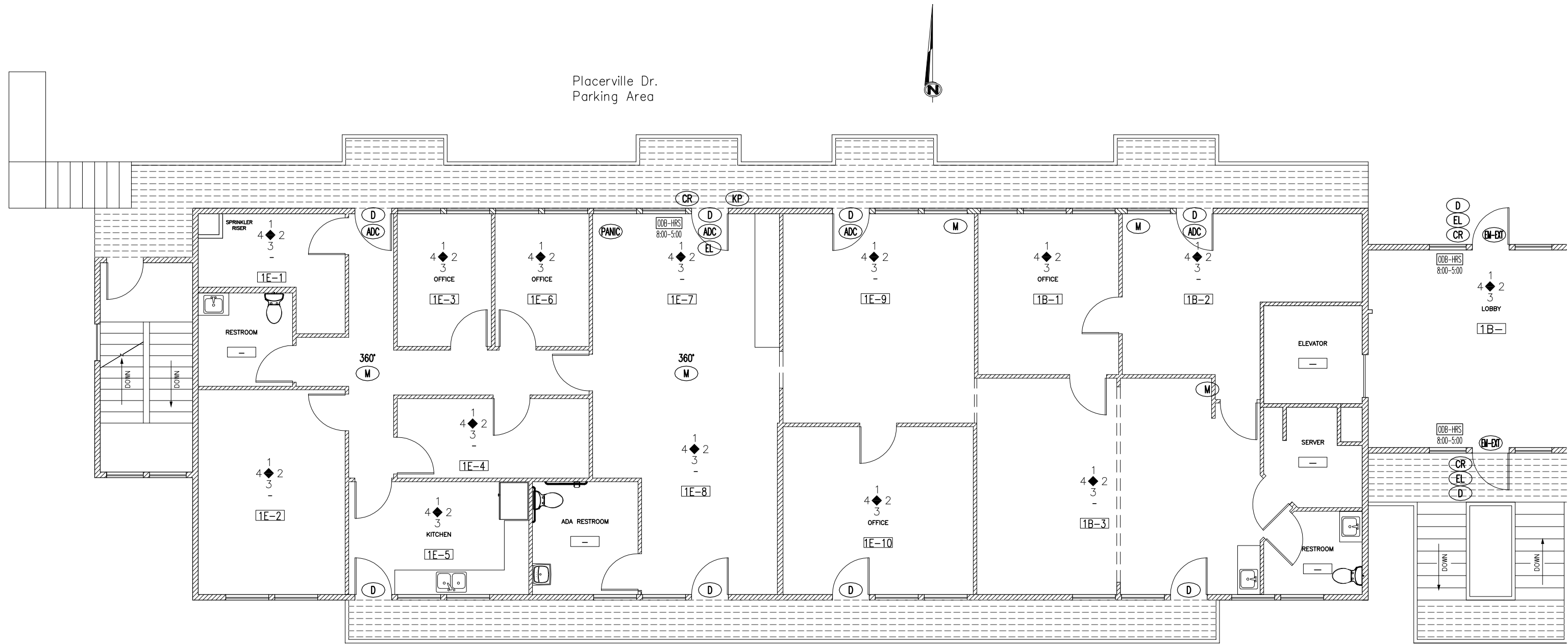
PAGE 13 OF 20

**PROJECT DATA:**

MAIN BUILDING DATA  
 TYPE OF CONSTRUCTION : ?  
 OCCUPANCY GROUP : ?  
 AREA (TOP FLOOR) : 3,072 S.F.  
 AREA (MID-LEVEL) : 5,461 S.F.  
 AREA (BOTTOM FLOOR) : 5,520 S.F.  
 AREA (TOTAL LEASED) : 14,053 S.F.  
 LOAD FACTOR : XX  
 OCCUPANCY : ? PEOPLE  
 A.P.N. : 323:580:26&27

FIRE DEPARTMENT DATA  
 EXISTING BUILDING : SPRINKLERED

CONTRACT NO. PW 10-30566 CIP NO. 90400



Placerville Dr.  
Parking Area



Hangtown Creek

**PROPOSED SECURITY UPGRADES PLAN**  
SCALE: 1/4"=1'-0"

**WEST SIDE-UPPER LEVEL**

FOR REDUCED PLANS 0 1/2 1 2 3 ORIGINAL SCALE IS IN INCHES

CONTRACT NO. PW 10-30566 CIP NO. 90400

REVISION	DATE	DESCRIPTION

**ACCESS CONTROL/CCTV/  
INTRUSION ALARM SYSTEM  
SECURITY UPGRADE PLAN**

**HEALTH SERVICES  
670 PLACERVILLE DR.  
PLACERVILLE, CA 95667**

**County of El Dorado**  
Department of Transportation  
Facilities Engineering Division



2850 Fair Lane Court Placerville, CA 95667 (530) 621-5900  
G:\FED\Bldgs-Lsd\670 Placerville Dr\Projects\woc#-PW#-Human Services-Security Upgrades\CADD Files\Improvement Plans\HVsels-upgrades.dwg, 12/21/2010 1:56:51 PM, 1:2

THIS DRAWING IS NOT FINAL OR TO BE USED FOR CONSTRUCTION UNTIL IT IS SIGNED BY THE ARCHITECT/ENGINEER.

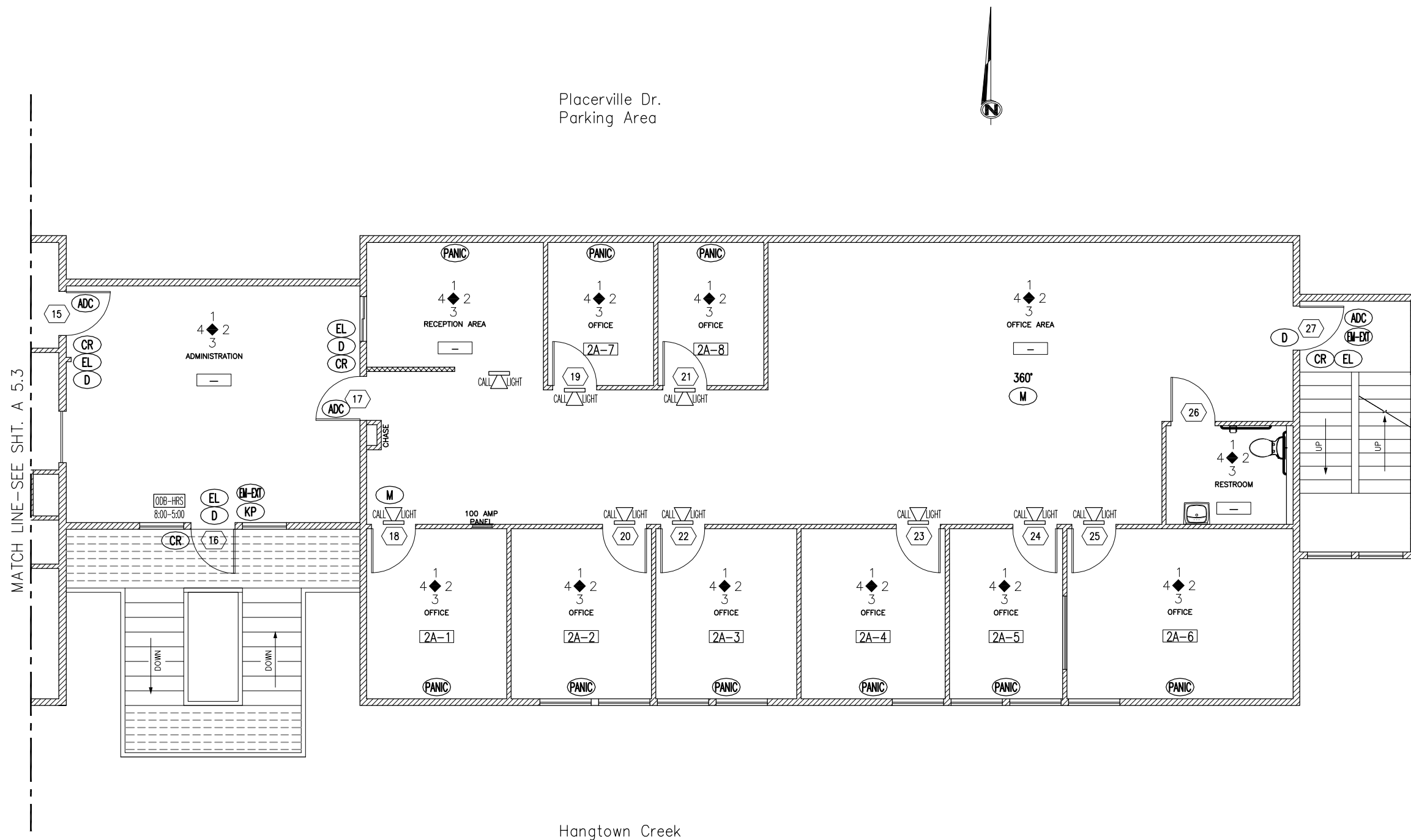
DATE: 12/03/10  
DESIGNED BY: [Signature]  
DRAWN BY: [Signature]  
CHECKED BY: [Signature]  
FILE #  
SEE PLOT STAMP  
PROJECT #

SHEET NO.

**A 5.1**

PAGE 14 OF 20

**PROPOSED SECURITY UPGRADES PLAN**  
SCALE: 1/4"=1'-0"



Placerville Dr.  
Parking Area

Hangtown Creek

EAST SIDE- MIDDLE LEVEL

FOR REDUCED PLANS 0 1/2 1 2 3 ORIGINAL SCALE IS IN INCHES

CONTRACT NO. PW 10-30566 CIP NO. 90400

REVISION	DATE	DESCRIPTION

**ACCESS CONTROL/CCTV/  
INTRUSION ALARM SYSTEM  
SECURITY UPGRADE PLAN**

**HEALTH SERVICES  
670 PLACERVILLE DR.  
PLACERVILLE, CA 95667**

**County of El Dorado**  
Department of Transportation  
Facilities Engineering Division  
2850 Fair Lane Court Placerville, CA 95667 (530) 621-5900  
G:\FED\Bldgs-Lsd\670 Placerville Dr\Projects\wo#-Human Services-Security Upgrades\CADD Files\Improvement Plans\AllLevels-upgrades.dwg, 12/21/2010 1:57:44 PM, 1:2

THIS DRAWING IS NOT FINAL OR TO BE USED FOR CONSTRUCTION UNTIL IT IS SIGNED BY THE ARCHITECT/ENGINEER.

DATE: 12/03/10

DESIGNED BY: L  
DRAWN BY: SB  
CHECKED BY: DL  
FILE #  
SEE PLOT STAMP  
PROJECT #

SHEET NO.

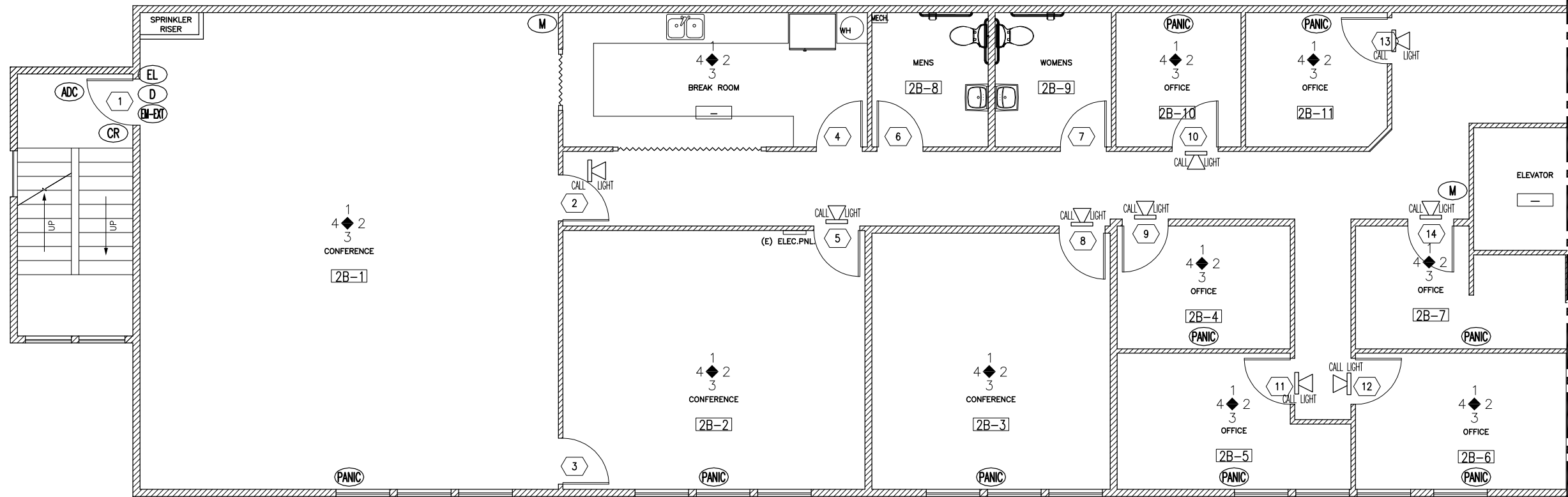
**A 5.2**

PAGE 15 OF 20

Placerville Dr.  
Parking Area



Hangtown Creek



WEST SIDE- MIDDLE LEVEL

PROPOSED SECURITY UPGRADES PLAN

SCALE: 1/4"=1'-0"

FOR REDUCED PLANS 0 1/2 1 2 3 ORIGINAL SCALE IS IN INCHES

REVISION	DATE	DESCRIPTION

ACCESS CONTROL/CCTV/  
INTRUSION ALARM SYSTEM  
SECURITY UPGRADE PLAN

HEALTH SERVICES  
670 PLACERVILLE DR.  
PLACERVILLE, CA 95667

County of El Dorado  
Department of Transportation  
Facilities Engineering Division  
2850 Fair Lane Court Placerville, CA 95667 (530) 621-5900

THIS DRAWING IS NOT FINAL OR  
TO BE USED FOR CONSTRUCTION  
UNTIL IT IS SIGNED BY THE  
ARCHITECT/ENGINEER.

DATE: 12/03/10

DESIGNED BY: T  
DRAWN BY: SS  
CHECKED BY: DL

FILE #  
SEE PLOT STAMP  
PROJECT #

SHEET NO.  
**A 5.3**

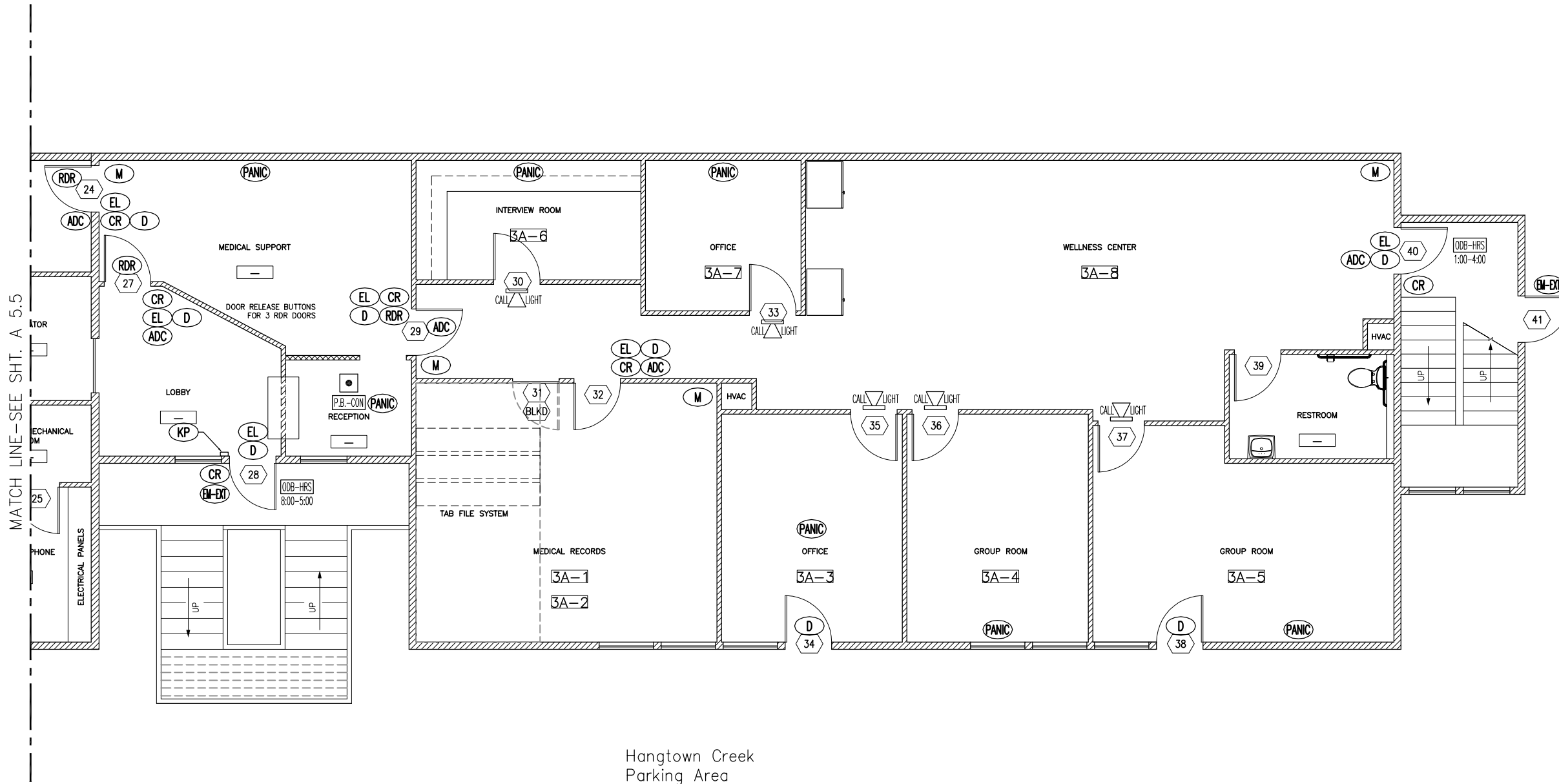
PAGE 16 OF 20

CONTRACT NO. PW 10-30566 CIP NO. 90400

G:\FED\Bldgs-Lsd\670 Placerville Dr\Projects\woc#-PW#-Human Services-Security Upgrades\CADD Files\Improvement Plans\HLevels-upgrades.dwg, 12/21/2010 1:58:31 PM, 1:2



Placerville Dr.  
Parking Area



Hangtown Creek  
Parking Area

EAST SIDE- LOWER LEVEL

PROPOSED SECURITY UPGRADES PLAN

SCALE: 1/4"=1'-0"

FOR REDUCED PLANS 0 1/2 1 2 3 ORIGINAL SCALE IS IN INCHES

REVISION	DATE	DESCRIPTION

ACCESS CONTROL/CCTV/  
INTRUSION ALARM SYSTEM  
SECURITY UPGRADE PLAN

HEALTH SERVICES  
670 PLACERVILLE DR.  
PLACERVILLE, CA 95667

County of El Dorado  
Department of Transportation  
Facilities Engineering Division

2850 Fair Lane Court Placerville, CA 95667 (530) 621-5900

THIS DRAWING IS NOT FINAL OR TO BE USED FOR CONSTRUCTION UNTIL IT IS SIGNED BY THE ARCHITECT/ENGINEER.

DATE: 12/03/10

DESIGNED BY: T  
DRAWN BY: SB  
CHECKED BY: DL

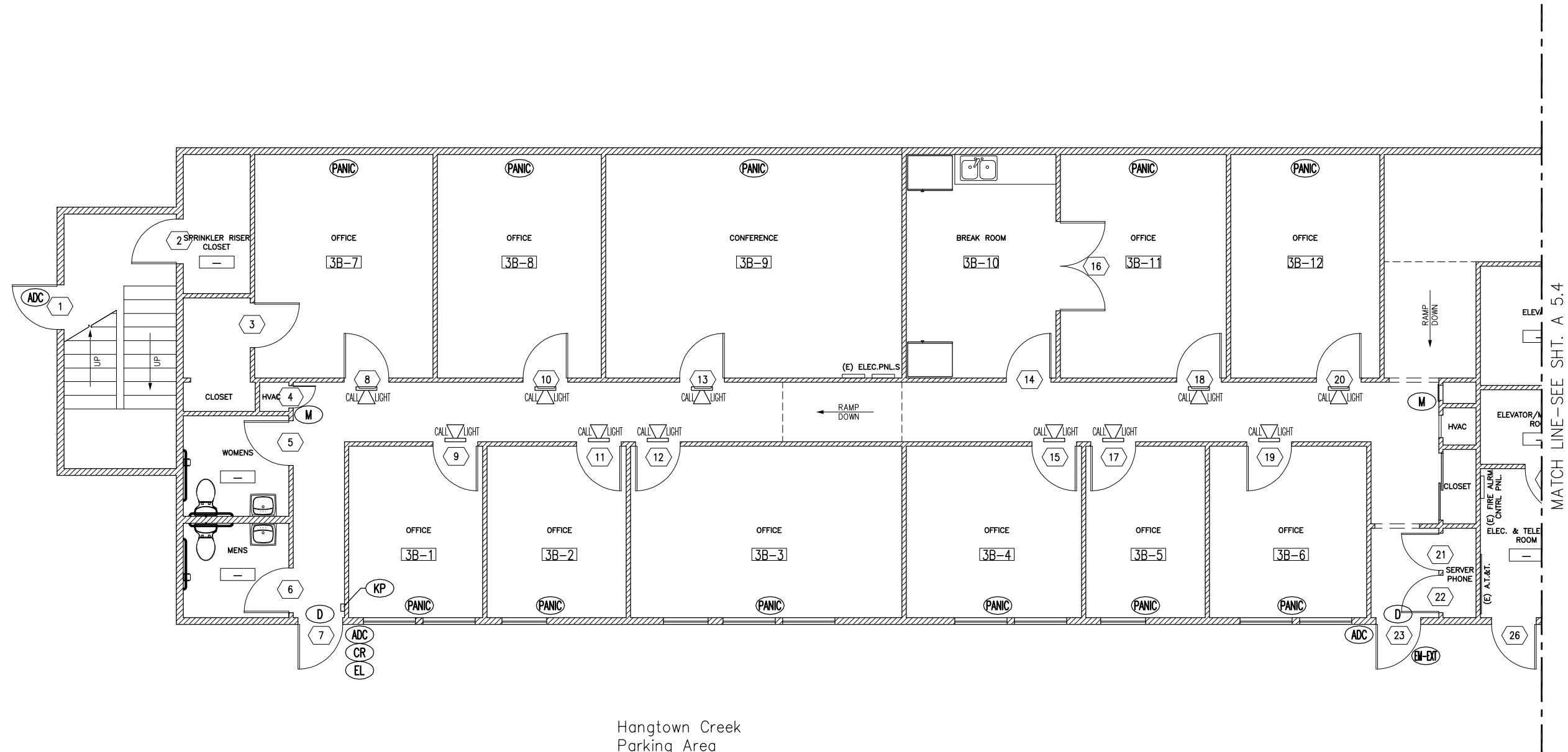
SHEET NO.

A 5.4

PAGE 17 OF 20

CONTRACT NO. PW 10-30566 CIP NO. 90400

Placerville Dr.  
Parking Area



Hangtown Creek  
Parking Area

WEST SIDE— LOWER LEVEL

PROPOSED SECURITY UPGRADES PLAN  
SCALE: 1/4"=1'-0"

FOR REDUCED PLANS 0 1/2 1 2 3 ORIGINAL SCALE IS IN INCHES

REVISION	DATE	DESCRIPTION

ACCESS CONTROL/CCTV/  
INTRUSION ALARM SYSTEM  
SECURITY UPGRADE PLAN

HEALTH SERVICES  
670 PLACERVILLE DR.  
PLACERVILLE, CA 95667

County of El Dorado  
Department of Transportation  
Facilities Engineering Division  
2850 Fair Lane Court Placerville, CA 95667 (530) 621-5900

THIS DRAWING IS NOT FINAL OR TO BE USED FOR CONSTRUCTION UNTIL IT IS SIGNED BY THE ARCHITECT/ENGINEER.

DATE: 12/03/10

DESIGNED BY: T  
DRAWN BY: SB  
CHECKED BY: DL  
FILE #  
SEE PLOT STAMP  
PROJECT #

SHEET NO.  
**A 5.5**

PAGE 18 OF 20

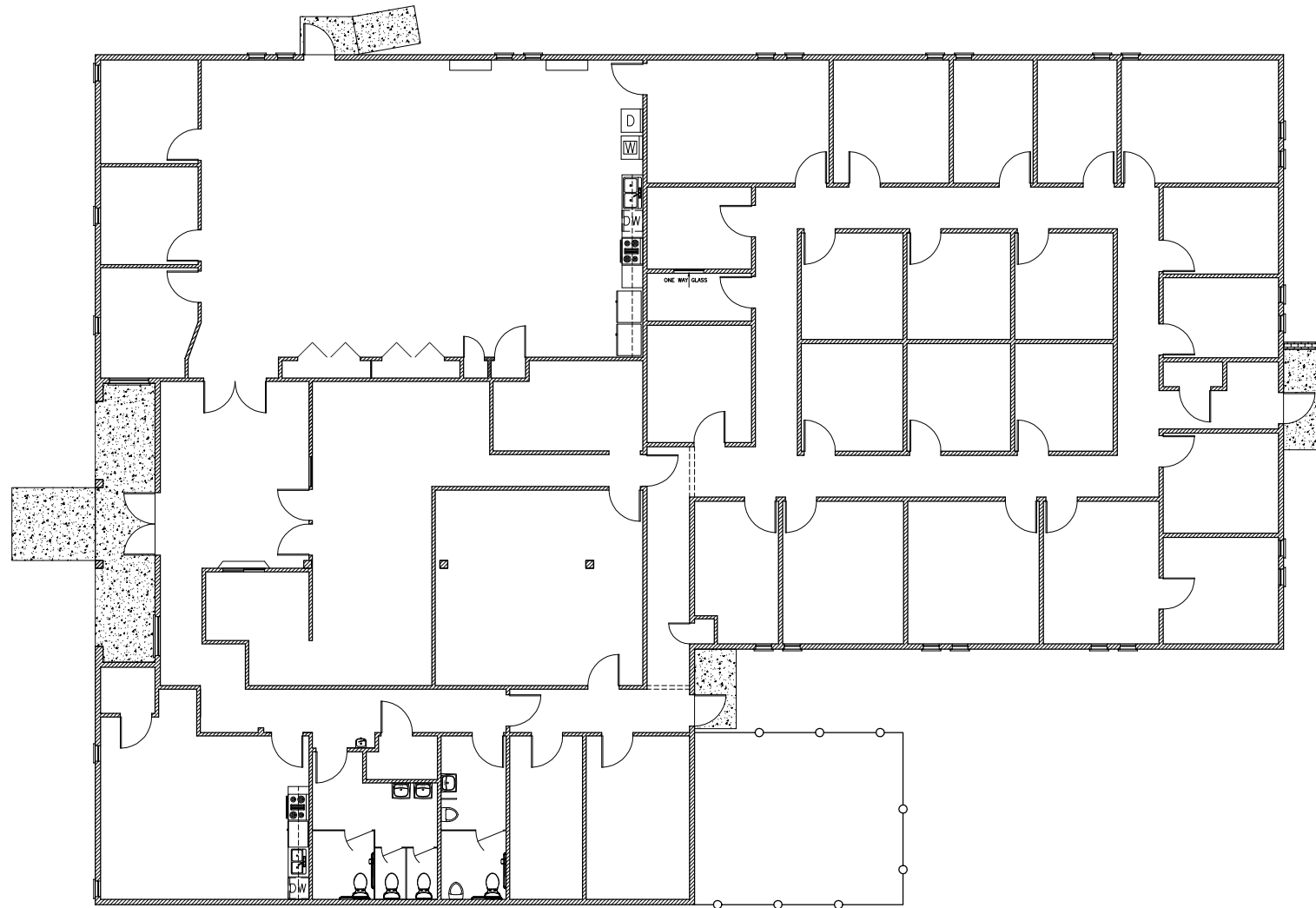
CONTRACT NO. PW 10-30566 CIP NO. 90400

G:\FED\Bldgs-Lsd\670 Placerville Dr\Projects\woc#-PW#-Human Services-Security Upgrades\Drawings\WOC#-Human Services-Security Upgrades\CADD Files\Improvement Plans\AllLevels-upgrades.dwg, 12/21/2010 1:59:43 PM, 1:2

EL DORADO COUNTY  
**HEALTH SERVICES**  
 1900 LAKE TAHOE BLVD. SOUTH LAKE TAHOE, CA

LAKE TAHOE BLVD.

TATA LANE



SCALE: 1/8" = 1'-0"



FOR REDUCED PLANS 0 1/2 1 2 3 ORIGINAL SCALE IS IN INCHES

**OWNER**

FLOYD FAMILY-LIMITED PTN.

201 TRINITY AVE. ARROYO GRANDE, CA 93420

TENANT IMPROVEMENTS BY:  
 EL DORADO COUNTY  
 DEPARTMENT OF TRANSPORTATION  
 FACILITIES ENGINEERING DIVISION

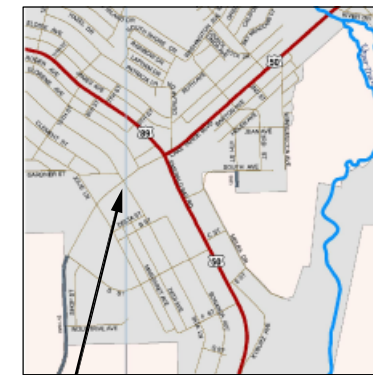
JAMES WARE, DIRECTOR  
 2850 FAIRLANE CT.  
 PLACERVILLE, CA 95667

REVISION	DATE	DESCRIPTION

ACCESS CONTROL/CCTV/  
 INTRUSION ALARM SYSTEM  
 COVER & SITE PLAN

HEALTH SERVICES  
 1900 LAKE TAHOE BLVD.  
 SOUTH LAKE TAHOE, CA 96150

**PROJECT LOCATION**



1900 LAKE TAHOE BLVD.

VICINITY MAP  
 NOT TO SCALE

County of El Dorado  
 Department of Transportation  
 Facilities Engineering Division



2850 Fair Lane Court Placerville, CA 95667 (530) 621-5900

THIS DRAWING IS NOT FINAL OR TO BE USED FOR CONSTRUCTION UNTIL IT IS SIGNED BY THE ARCHITECT/ENGINEER.

**PROJECT DATA:**

**MAIN BUILDING DATA**

TYPE OF CONSTRUCTION : ?  
 OCCUPANCY GROUP : ?  
 AREA (ENTIRE BUILDING) : 7,753 S.F.  
 LOAD FACTOR : XX  
 OCCUPANCY : ? PEOPLE  
 A.P.N. : 032:291:21

**FIRE DEPARTMENT DATA**

EXISTING BUILDING : SPRINKLERED

DATE: 12/03/10

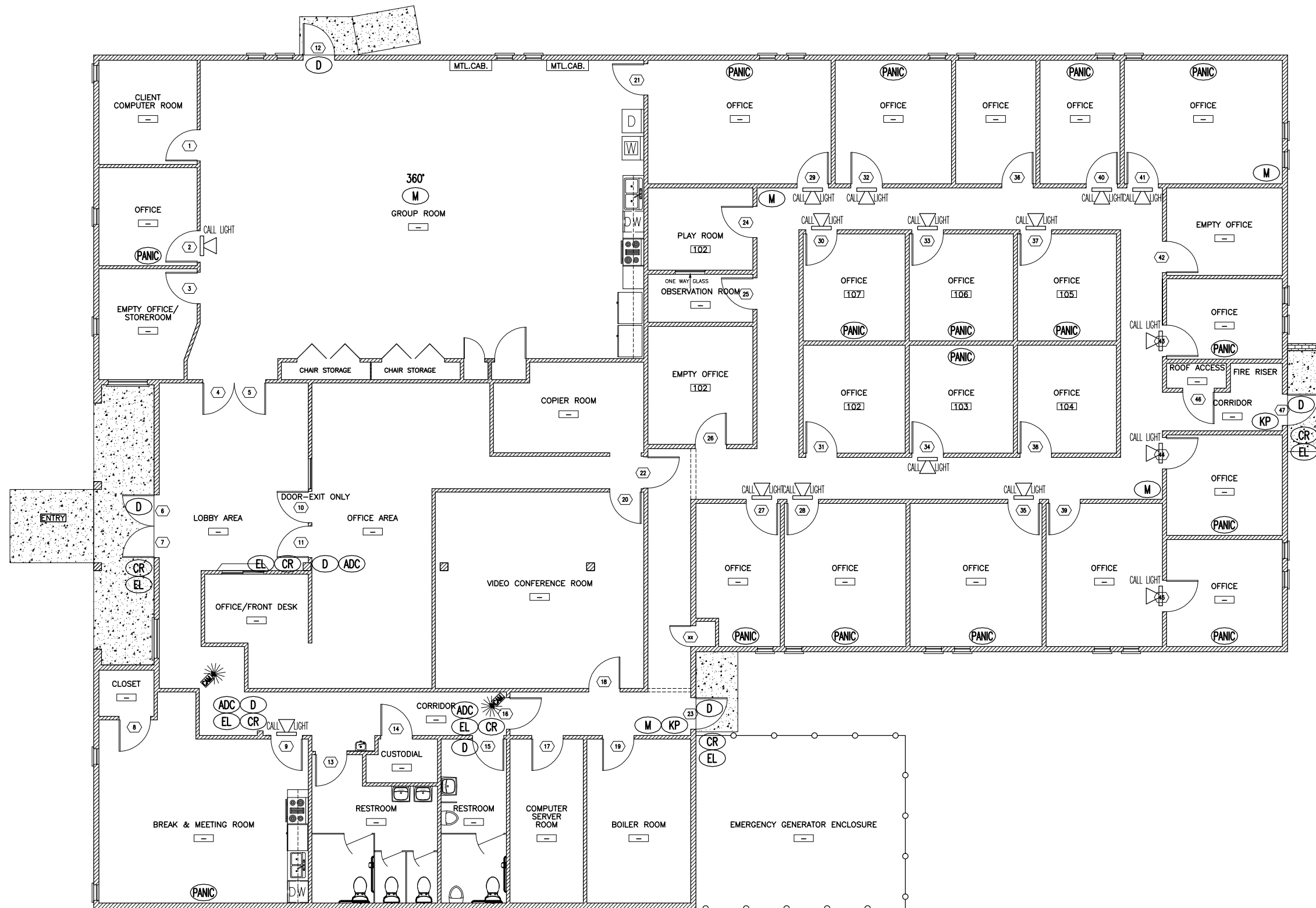
DESIGNED BY: L  
 DRAWN BY: SB  
 CHECKED BY: DL  
 FILE #  
 SEE PLOT STAMP  
 PROJECT #

SHEET NO.

**CVR 6.0**

PAGE 19 OF 20

CONTRACT NO. PW 10-30566 CIP NO. 90400



**PROPOSED SECURITY UPGRADES PLAN**  
 SCALE: 3/16"=1'-0"

FOR REDUCED PLANS 0 1/2 1 2 3 ORIGINAL SCALE IS IN INCHES

REVISION	DATE	DESCRIPTION

**ACCESS CONTROL/CCTV/  
 INTRUSION ALARM SYSTEM  
 SECURITY UPGRADE PLAN**

**HEALTH SERVICES  
 1900 LAKE TAHOE BLVD.  
 SOUTH LAKE TAHOE, CA 96150**

**County of El Dorado**  
 Department of Transportation  
 Facilities Engineering Division  
 2850 Fair Lane Court Placerville, CA 95667 (530) 621-5900

THIS DRAWING IS NOT FINAL OR TO BE USED FOR CONSTRUCTION UNTIL IT IS SIGNED BY THE ARCHITECT/ENGINEER.

DATE: 12/03/10  
 DESIGNED BY: L  
 DRAWN BY: SB  
 CHECKED BY: DL  
 FILE #  
 SEE PLOT STAMP  
 PROJECT #

SHEET NO.  
**A 6.1**  
 PAGE 20 OF 20