



STATE OF EDUCATION 2011-2012

STUDENT PERFORMANCE

Percentage of Schools At or Above API Target of 800

El Dorado County	2011	State	2011
Elementary	93%	Elementary	55%
Middle	82%	Middle	43%
High	66%	High	49%

(CDE 2010-11)

Percentage of Students Advanced or Proficient on the English Language Arts and Mathematics California Standards Tests

Percentage of Students at the Proficient or Advanced Level on the English/Language Arts CST Test

	2008-09	2009-10	2010-11
Grade 2	65%	62%	63%
Grade 3	61%	56%	56%
Grade 4	78%	77%	75%
Grade 5	70%	74%	73%
Grade 6	68%	69%	68%
Grade 7	72%	72%	73%

(CDE 2010-11)

Percentage of Students at the Proficient or Advanced Level on the Mathematics CST Test

	2008-09	2009-10	2010-11
Grade 2	78%	74%	74%
Grade 3	78%	77%	75%
Grade 4	79%	79%	79%
Grade 5	71%	73%	71%
Grade 6	61%	65%	64%
Grade 7	58%	61%	58%

2010-11 College Entrance Exams Average Scores

Average Scores	County	Statewide
SAT Critical Reading	543	501
SAT Mathematics	567	520
SAT Writing	530	500

(CDE 2010-11)

College Prep Classes Enrollment

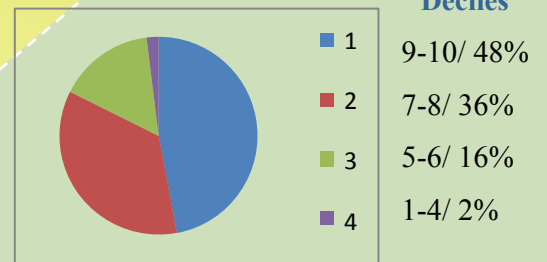
Year	County	% Change
2007-08	860	4.8%
2008-09	965	12.2%
2009-10	909	-5.8%

(CDE 2010-11)



API - % of Schools Scoring in Deciles 1-10

On the API Base reports, schools are ranked in ten categories of equal size, called deciles, from one (lowest) to ten (highest).



(CDE 2010-11)

2011 California High School Exit Exam

% passed in	County	Statewide
English/Language Arts	91%	82%
Mathematics	91%	83%

(CDE 2010-11)

Graduation Rates

Year	County	Statewide
2007-08	86.8%	80.2%
2008-09	87.8%	78.6%
2009-10	89.6%	80.5%

(CDE 2010-11)

Dropout Rates

Year	County	Statewide
2007-08	3.7%	4.9%
2008-09	3.0%	5.7%
2009-10	2.5%	4.6%

(CDE 2010-11)

This fact sheet was designed to provide educators, legislators, the media, and the general public with basic statistical information on Pre-K-12 education in El Dorado County. Data was compiled by the El Dorado County Office of Education (EDCOE).

Career Technical Education for 2010-11 (Grades 9-12)

COURSE	# OF STUDENTS ENROLLED
Agriculture/Natural Resources	186
Arts, Media & Entertainment	128
Building Trades & Construction	272
Consumer & Family Studies	668
Energy & Utilities	81
Engineering & Design	284
Finance & Business	224
Health Science & Med. Tech.	89
Hospitality, Tourism & Rec.	219
Information Technology	89
Manufacturing & Product Dev.	322
Transportation	344
Work Experience Education	21
Total of 9-12 Students Enrolled	2,927

The 2,927 represents approximately 42% of high school students in El Dorado County who are able to take Career Technical Education courses.

(CDE 2010-11)



Number of Students Enrolled in Advanced Placement/Honors Courses

Courses	2007-08		2010-11	
	# of Classes	Enrolled	# of Classes	Enrolled
English	34	851	28	816
Social Science	15	406	17	470
Mathematics	17	415	14	422
Science	11	289	14	388
Foreign Language	4	88	3	75
Computer Education	1	28	1	27
Art	1	3	1	24
El Dorado County Total	83	2080	78	2,222

(CDE 2010-11)

Administrative Officers

Vicki L. Barber, Ed.D., County Superintendent of Schools
 Jeremy Meyers, Deputy Superintendent, Educational Services
 Robbie Montalbano, Associate Superintendent, Administrative Services

County Board of Education

Debbie Akin, Matt Boyer, John Lane, Gene Rasmussen, Heidi Weiland

EL DORADO COUNTY OFFICE OF EDUCATION

Vicki L. Barber, Ed. D., County Superintendent of Schools
 6767 Green Valley Road, Placerville, CA 95667
 Phone: 530-622-7130 Fax: 530-621-2543
 www.edcoe.org

Revised 3-14-12

Charter School Programs

Charter Schools legislation was enacted to "provide opportunities for teachers, parents, pupils, and community members to establish and maintain schools that operate independently from the existing school district structure ... to accomplish all of the following: improve pupil learning ... increase learning opportunities ... encourage different and innovative teaching methods ... provide parents and pupils with expanded choices..." Source: Education Code 47601.

Program	NUMBER OF STUDENTS ENROLLED		
	2008-09	2009-10	2010-11
American River Home School (Charter) (Black Oak Mine Unified)	0	0	167
Charter Community Day School (K-6)	5	2	7
Charter Community School/Home Study Academies	688	676	696
California Montessori Project	308	331	352
Charter Montessori School (Buckeye USD)	0	114	146
Gold Oak Arts Charter School	61	69	63
Rite of Passage	171	200	202
Shenandoah High (El Dorado Union High School District)	101	96	53
Total Enrolled	1,433	1,488	1,686

(CDE 2010-11)

Child Development Programs

Research shows that children who attend a high-quality preschool program are more likely to complete high school, have higher annual earnings, are less likely to be arrested, and have less drug use as adults than children who do not attend preschool. (Source: *Lifetime Effects: The High Scope/Perry Preschool Study through Age 40*; L. J. Schweinhart et al, 2005.)

Latchkey funding was eliminated in 09-10. In 09-10, the California Department of Education consolidated 3 and 4 year olds from Children's Center into the State Preschool.

Program Type	2008-2009	2009-2010	2010-2011
Head Start	373	373	373
Early Head Start	125	125	125
State Preschool	223	565	565
Fee Based Preschool	0	0	63
Children's Center	190	60	0
Latchkey	17	0	0
Cal Safe/Teen Parenting	15	15	13
Total Funded Enrollment	943	1,138	1,139

(EDCOE 2010-11)

Special Services Programs

The EDCOE Special Services Department operates quality educational programs for students with severe disabilities on the western slope of El Dorado County. Services are provided to students who are identified as Intellectually Disabled, Orthopedically Impaired, Emotionally Disturbed, Deaf or Hard of Hearing, Speech or Language Impairment, or diagnosed with Autism or Traumatic Brain Injury. A full continuum of services is provided to students from age 3 through 22.

ENROLLMENT DATA

Disability	2010-11
Autistic	27
Communicatively Handicapped	3
Deaf or Hard of Hearing	6
Inclusion	11
Orthopedically Impaired	23
Preschool	59
Emotionally Disturbed	13
Intellectually Disabled	57
Severely Multiply Impaired	3
Visually Impaired	3
TOTAL	205

(EDCOE 2010-11)

