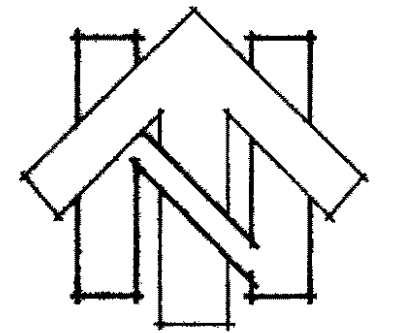
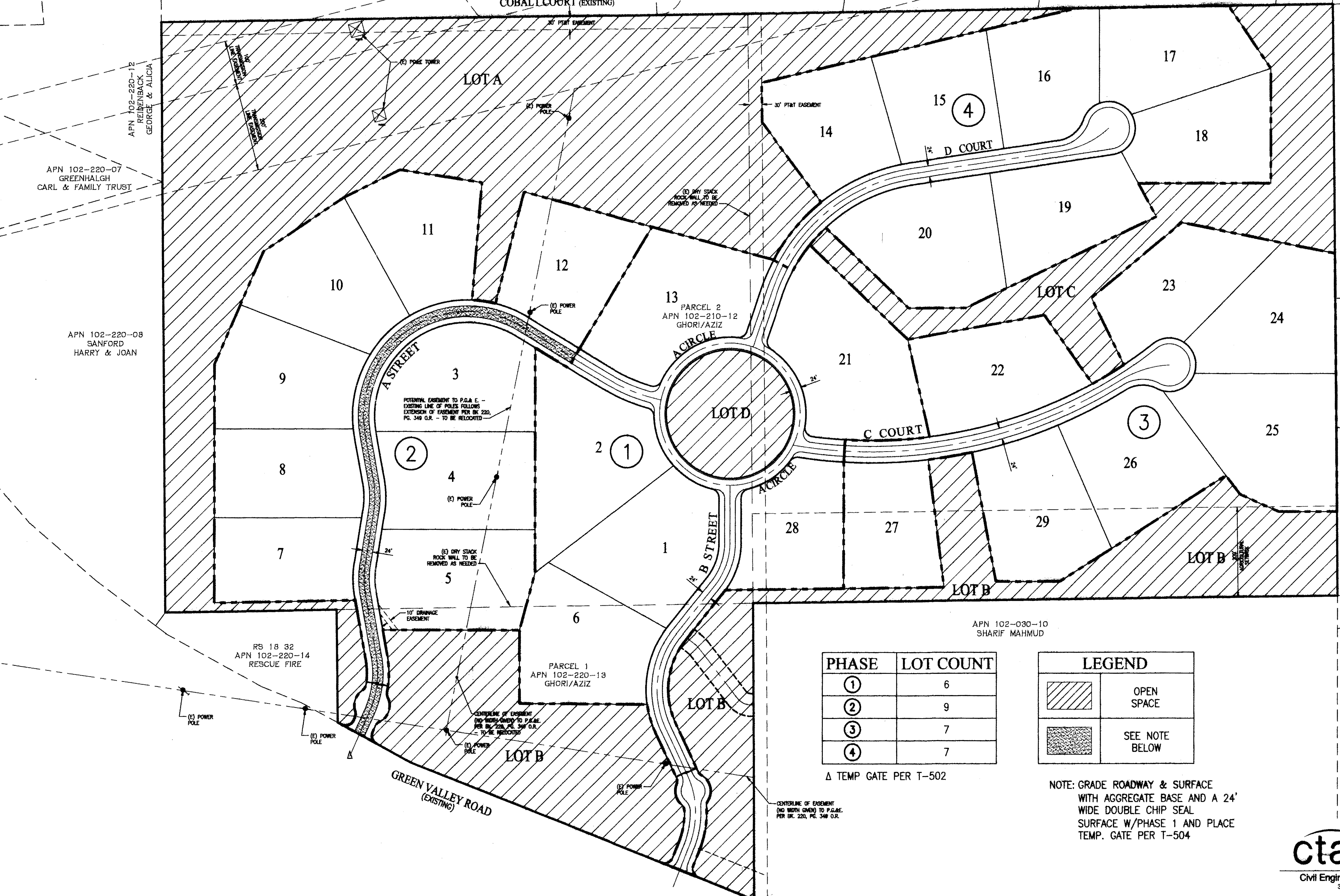


SUMMER BROOK PHASE 0 PROPOSED PHASING PLAN

EL DORADO COUNTY, CALIFORNIA
SCALE: 1"=100'
JANUARY, 2017



0 50' 100' 200'
SCALE: 1" = 100'



PHASE	LOT COUNT
①	6
②	9
③	7
④	7

Δ TEMP GATE PER T-502

LEGEND	
	OPEN SPACE
	SEE NOTE BELOW

NOTE: GRADE ROADWAY & SURFACE WITH AGGREGATE BASE AND A 24' WIDE DOUBLE CHIP SEAL SURFACE W/PHASE 1 AND PLACE TEMP. GATE PER T-504

APPROVED
EL DORADO COUNTY
PLANNING COMMISSION
DATE August 9, 2018
BY Regan Truitt
EXECUTIVE SECRETARY

TM 07-1440-R-2

cta Engineering & Surveying
Civil Engineering • Land Surveying • Land Planning
3233 Monitor Circle, Rancho Cordova, CA 95742
T (916) 838-0919 • F (916) 838-2479 • www.cta.com