

# El Dorado County Library and Museum

# Education Preservation Community Hubs

# Education

- Programs and Classes
- Literacy and Books
- Research and Homework
- Technology
- Public Spaces

# Preservation

- Local History
- Archives
- Newspapers/Maps/Documents
- Artifacts

# Community Hubs

## Library

- Early Childhood Literacy – Programs, Books, Reading

## El Dorado County Office of Education

- Social Connections – Playgroups, Parenting Skills
- Developmental Screens

## Public Health

- Medical Providers/Health Insurance
- Referrals to Public Health Nurse

# Statistics

Library Cards	101,000
Library Programs	1,620
Checkouts Per Year	800,000
Items in Collection	350,000
Museum Visits	6,500

# Budget

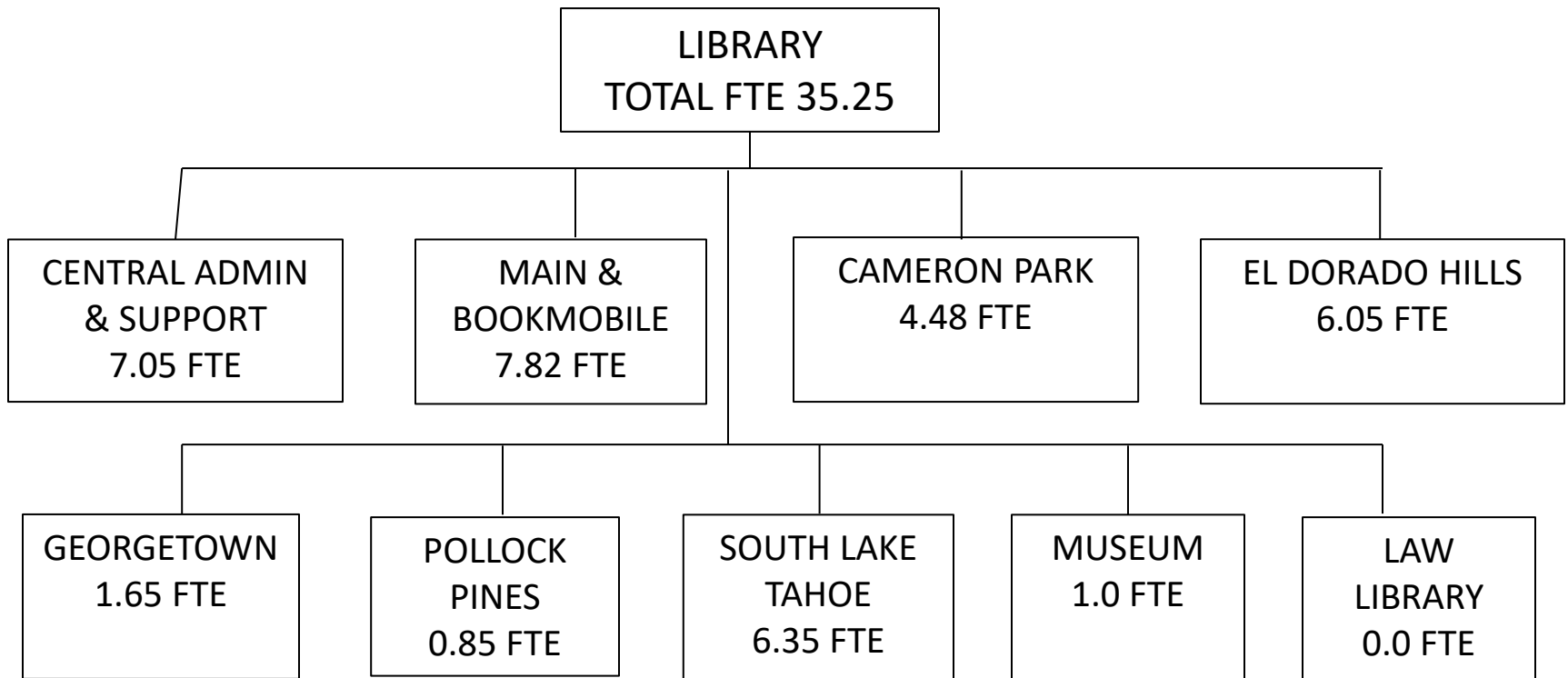
Net County Cost	\$1,619,467
Additional Revenue	\$2,310,398
Total Budget	<hr/> <u>\$3,929,865</u>
Expenditures per Capita	\$18.54

# Additional Revenue

Library Taxes	\$1,579,222
Fines and Fees	\$ 157,875
Grants	\$ 349,500
Donations	\$ 223,800
Total Additional Revenue	<hr/> <u>\$ 2,310,398</u>



# Staff



35.25 FTE = 40 employees (24 Full Time, 16 Part Time)

Additional Paid Staff: 7 Extra Help

Library Volunteers: 15,500 hours/7.5 FTE

Museum Volunteers: 15,000 hours/7 FTE

# Challenges & Accomplishments

## Challenges:

Insufficient public hours

Fines for Children

Outdated Facilities

## Accomplishments:

High-Speed Internet at all  
Libraries

Additional Hours at the  
South Lake Tahoe Library

NorthNet Library System  
Cooperative lending  
Ebooks