

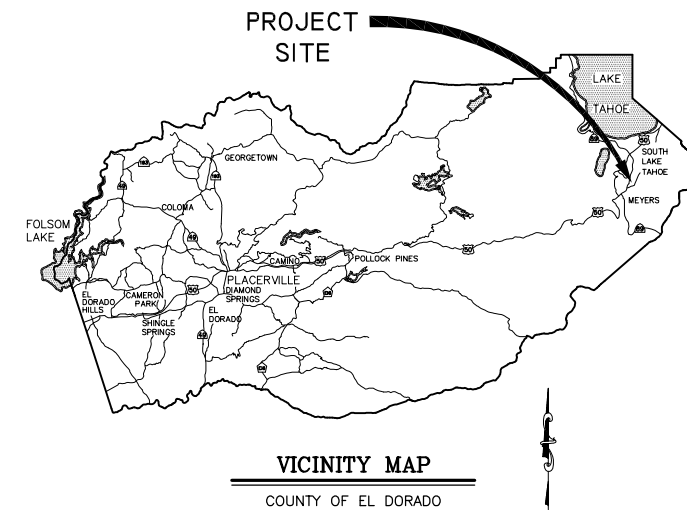
**COUNTY OF EL DORADO, CA
COMMUNITY DEVELOPMENT SERVICES
TRANSPORTATION DEPARTMENT**

PROJECT PLANS FOR THE CONSTRUCTION OF THE 2017

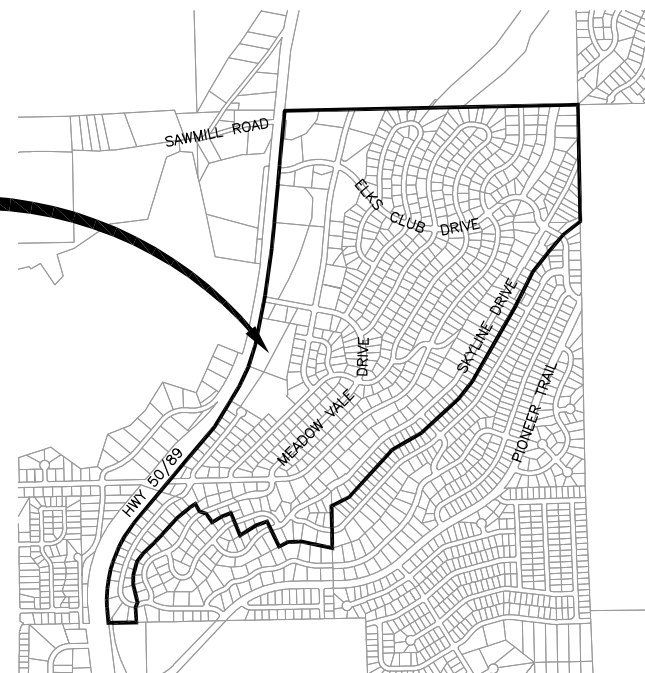
**COUNTRY CLUB HEIGHTS
EROSION CONTROL PROJECT
PHASE I**

IN THE COUNTY OF EL DORADO, DISTRICT 5,
COUNTRY CLUB HEIGHTS UNIT NOS. 1, 2, 3, AND 4 SUBDIVISIONS;
PORTIONS OF COUNTRY CLUB HEIGHTS UNIT NO. 5 AND TAHOE
PARADISE UNIT NO. 48 SUBDIVISIONS

To be supplemented with the 2015 Standard Plans and Specifications of
the California Department of Transportation, unless otherwise noted.



**COUNTRY CLUB HEIGHTS
EROSION CONTROL PROJECT
BOUNDARY**



FUNDING AGENCIES
UNITED STATES FOREST SERVICE

BOARD OF SUPERVISORS

I	JOHN HIDAHL
II	SHIVA FRENTZEN
III	BRIAN K. VEERKAMP
IV	MICHAEL RANALLI
V	SUE NOVASEL

**COUNTY OF EL DORADO
COMMUNITY DEVELOPMENT SERVICES
TRANSPORTATION DEPARTMENT**

(530) 573-7900
924 B EMERALD BAY RD
SOUTH LAKE TAHOE, CA 96150

(530) 621-5900
2850 FAIRLAKE CT
PLACERVILLE, CA 95667

ADOPTED AND APPROVED BY:

DATE	DATE	DATE
SHIVA FRENTZEN, CHAIR, COUNTY OF EL DORADO BOARD OF SUPERVISORS	BARB LOWER, INTERIM DIRECTOR COMMUNITY DEVELOPMENT SERVICES, TRANSPORTATION DEPARTMENT	JOHN H. KAHLING, P.E., RCE NO. 52426, DEPUTY DIRECTOR OF ENGINEERING COMMUNITY DEVELOPMENT SERVICES, TRANSPORTATION DEPARTMENT

CONTRACT NO. PW 17-3116, CIP NO. 95191

**COUNTRY CLUB HEIGHTS
EROSION CONTROL PROJECT
PHASE I**

TITLE SHEET

SHEET I OF 19

INDEX OF SHEETS


Sheet Number	Sheet Title	Sheet Description
1	i	TITLE SHEET
2	ii	GENERAL NOTES, ABBREVIATIONS, AND LEGEND
3	iii	SHEET INDEX MAP AND EARTHWORK SUMMARY TABLE
4	SC-1	SURVEY CONTROL AND ALIGNMENTS
5	SC-2	SURVEY CONTROL AND ALIGNMENTS
6	SC-3	SURVEY CONTROL AND ALIGNMENT LISTINGS
7	P-1	MEADOW VALE DR & BOCA RATON DR PLAN & PROFILE
8	P-2	ELKS CLUB DR & BEL AIRE CIR, CHERRY HILLS CIR, THUNDERBIRD CT
9	P-3	GLEN EAGLES RD, ELKS CLUB DR THUNDERBIRD CT, CHERRY HILLS DR
10	P-4	SOUTHERN PINES DR, THUNDERBIRD DR, MEADOW VALE DR, PEBBLE BEACH DR, CRYSTAL AIR DR, SKYLINE DR
11	P-5	GUNITE SLOPE PROTECTION MEADOW VALE DR
12	D-1	DETAIL SHEET
13	D-2	DETAIL SHEET
14	D-3	DETAIL SHEET
15	HC-1	HORIZONTAL CONTROL / MEADOWVALE X-SECTIONS
16	EC-1	TEMPORARY EROSION CONTROL
17	EC-2	TEMPORARY EROSION CONTROL
18	R-1	REVEGETATIVE PLAN
19	TC-1	TRAFFIC CONTROL PLAN

CONTRACTOR'S LICENSE CLASSIFICATION: Bidders shall be properly licensed to perform the Work pursuant to the State Contractor's License Law (Business and Professions Code section 7000 et seq.) and shall possess a CLASS A LICENSE (Schedule A Work) and CLASS C27 LICENSE (Schedule B Work) or equivalent combination of Classes required by the categories and type of Work included in the Contract Documents and Plans, at the time the Contract is awarded, and shall maintain a valid license through completion and acceptance of the Work including guarantee and warranty period. Failure of the successful Bidder to obtain proper and adequate licensing for an award of the Contract shall constitute a failure to execute the Contract, and shall result in forfeiture of the Bidders security.

REVISIONS

MARK	DATE	BY




 SUBMITTED BY: DANIEL W. KIKKERT P.E.
 SENIOR CIVIL ENGINEER
 STATE OF CALIFORNIA NO. 70168

06/12/17
 DATE

GENERAL NOTES

- ALL IMPROVEMENTS WILL BE ACCOMPLISHED UNDER THE APPROVAL, INSPECTION, AND TO THE SATISFACTION OF THE COUNTY OF EL DORADO TRANSPORTATION DIVISION (TD). IMPROVEMENT CONSTRUCTION MUST COMPLY WITH THESE PLANS AND THE 2015 CALTRANS STANDARD PLANS, UNLESS NOTED OTHERWISE. ALL REFERENCES TO THE "STANDARD SPECIFICATIONS" MEAN THE STATE OF CALIFORNIA, DEPARTMENT OF TRANSPORTATION (CALTRANS) 2015 STANDARD SPECIFICATIONS. CONSTRUCTION NOT SPECIFIED ON THESE PLANS OR IN SPECIFIC COUNTY OF EL DORADO (COUNTY) ORDINANCES MUST CONFORM TO THE REQUIREMENTS OF THE STANDARD SPECIFICATIONS. YOU ARE OBLIGATED TO BE FAMILIAR WITH APPLICABLE SECTIONS OF THE STANDARD SPECIFICATIONS NOT DISCUSSED IN THE GENERAL NOTES. THE CONTRACT SPECIAL PROVISIONS SUPERSEDE THE STANDARD SPECIFICATIONS WHERE DISCREPANCIES OCCUR.
- CONSTRUCTION HOURS WILL BE WEEKDAYS BETWEEN 8:00 A.M. AND 6:30 P.M. UNLESS PRIOR APPROVAL IS RECEIVED FROM THE COUNTY TD.
- THE LOCATIONS AND EXTENT OF UNDERGROUND UTILITIES IN THE WORK AREA AS SHOWN ARE APPROXIMATE AND ARE NOT NECESSARILY COMPLETE. A REASONABLE EFFORT HAS BEEN MADE TO LOCATE AND DELINEATE UTILITIES BASED UPON AVAILABLE RECORDS. YOU MUST DETERMINE THE TYPE, LOCATION, SIZE, AND/OR DEPTH OF THE UTILITIES WITHIN THE WORK AREA BEFORE STARTING WORK. YOU OR ANY SUBCONTRACTOR FOR THIS CONTRACT ARE RESPONSIBLE FOR DAMAGES DUE TO THE FAILURE TO EXACTLY LOCATE AND PRESERVE UNDERGROUND UTILITIES. YOU MUST CONTACT UNDERGROUND SERVICE ALERT AT (800) 642-2444 AT LEAST 48 HOURS BEFORE ANY CONSTRUCTION. SEE THE SPECIAL PROVISIONS FOR NOTIFICATION REQUIREMENTS. YOU ASSUME COMPLETE RESPONSIBILITY FOR DAMAGED UTILITIES.
- UNLESS SHOWN OTHERWISE, YOU ARE RESPONSIBLE FOR THE PROTECTION OF ALL EXISTING SURVEY MONUMENTS AND OTHER SURVEY MARKERS, INCLUDING CONSTRUCTION STAKES DURING CONSTRUCTION AND YOU ARE RESPONSIBLE FOR THE COST TO REPLACE ANY SUCH SURVEY MONUMENTS, MARKERS, OR STAKES.
- YOU WILL PROVIDE ALL LIGHTS, SIGNS, BARRICADES, FLAG PERSONS, PILOT CAR, OR OTHER DEVICES NECESSARY TO CONTROL TRAFFIC THROUGH THE JOB SITE AND FOR PUBLIC SAFETY UNDER THESE PLANS, THE STANDARD SPECIFICATIONS, AND CALIFORNIA MANUAL ON UNIFORM TRAFFIC CONTROL DEVICES (MUTCD).
- YOU AGREE TO ASSUME SOLE RESPONSIBILITY FOR JOB SITE CONDITIONS DURING THE COURSE OF THE WORK, INCLUDING SAFETY OF ALL PERSONS AND PROPERTY, AND FURTHER AGREE THAT THIS REQUIREMENT APPLIES CONTINUOUSLY AND IS NOT LIMITED TO NORMAL WORKING HOURS UNDER THE CONTRACT AND STANDARD SPECIFICATIONS.
- THERE WILL BE NO GRADING OR LAND DISTURBANCE BETWEEN OCTOBER 15 AND MAY 1 UNLESS APPROVALS ARE OBTAINED FROM THE TAHOE REGIONAL PLANNING AGENCY (TRPA), AS PROVIDED IN THE LIMITED EXEMPTION DESCRIBED IN CHAPTER 64, SUBSECTION 64.2.B. OF THE TRPA CODE OF ORDINANCES. APPROVALS FOR GRADING BETWEEN OCTOBER 15 AND MAY 1 MUST ALSO BE OBTAINED FROM THE REGIONAL WATER QUALITY CONTROL BOARD, LAHONTAN. IF REQUIRED, THE COUNTY WILL OBTAIN THESE APPROVALS.
- YOU WILL MAINTAIN A SET OF PLANS ON THE JOB SITE SHOWING "AS-CONSTRUCTED" CHANGES MADE TO DATE. UPON COMPLETION OF THE WORK, YOU WILL GIVE TO THE COUNTY A SET OF PLANS, MARKED UP TO THE SATISFACTION OF THE COUNTY, REFLECTING THE AS-CONSTRUCTED MODIFICATIONS.
- ALL CONTROL STATIONING AND DATA DIMENSIONING REFERENCE THE CENTERLINE OF THE FACILITY SHOWN, UNLESS NOTED OTHERWISE.
- YOU WILL NOT CLOSE OFF ANY UTILITY LINES OR OPEN VALVES OR TAKE ANY OTHER ACTION WHICH WOULD AFFECT THE OPERATION OF WATER OR SEWER SYSTEMS WITHOUT APPROVAL FROM THE SOUTH TAHOE PUBLIC UTILITY DISTRICT (STPUD). APPROVAL MUST BE REQUESTED AT LEAST 48 HOURS BEFORE INTERRUPTION OF THE UTILITY SERVICE IS REQUIRED. ANY INTERRUPTION TO ACTIVE WATER OR SEWER SERVICES, INCLUDING FIRE HYDRANTS, WHETHER INTENTIONAL OR NOT, MUST BE KEPT TO A MINIMUM TIME PERIOD. IF SERVICE TO BUILDINGS IS TO BE OFF FOR MORE THAN FOUR HOURS, YOU MUST ADVISE STPUD.
- YOU ARE REQUIRED TO IMPLEMENT DUST CONTROL MEASURES TO ENSURE THAT DUST RESULTING FROM YOUR ACTIVITIES IS CONTROLLED AND COMPLIES WITH THE PROVISIONS OF SECTION 7, "LEGAL RELATIONS AND RESPONSIBILITY TO THE PUBLIC," AND SECTION 14, "ENVIRONMENTAL STEWARDSHIP," OF THE STANDARD SPECIFICATIONS, COUNTY, AND LOCAL ORDINANCES. SEE THE SPECIAL PROVISIONS FOR DUST AND TRACKING CONTROL AND SWEEPING REQUIREMENTS.
- YOU ARE RESPONSIBLE FOR IMPLEMENTING ALL TEMPORARY EROSION CONTROL MEASURES. THE TEMPORARY EROSION CONTROL MEASURES MUST COMPLY WITH THE TRPA "HANDBOOK OF BEST MANAGEMENT PRACTICES" AND THE STORM WATER POLLUTION PREVENTION PLAN (SWPPP). THE TD WILL CONTACT TRPA BEFORE THE START OF THE WORK FOR A PRE-GRADING INSPECTION OF THE INSTALLED TEMPORARY EROSION CONTROL FACILITIES. YOU ARE RESPONSIBLE FOR THE MAINTENANCE AND PERFORMANCE OF THE TEMPORARY EROSION CONTROL MEASURES THROUGHOUT THE DURATION OF THE WORK. SEE THE SPECIAL PROVISIONS REGARDING TEMPORARY EROSION CONTROL FACILITY REMOVAL.
- CONSTRUCTION LIMITS SHOWN DELINEATE THE BOUNDARIES FOR YOUR ACTIVITIES BEYOND THE COUNTY STREET RIGHT-OF-WAY. CONSTRUCTION LIMIT FENCING MUST BE ERECTED ALONG THESE BOUNDARIES BEFORE WORK STARTS. VEGETATION WITHIN THESE LIMITS MUST BE PROTECTED TO THE EXTENT FEASIBLE. ALL TREES MUST BE PROTECTED UNLESS SHOWN TO BE REMOVED.
- UNLESS NOTED OTHERWISE, ALL REVEGETATION IS TO BE COMPLETED BY OTHERS.
- YOU WILL ONLY USE THE DESIGNATED SITES SHOWN FOR STORAGE OF EQUIPMENT AND MATERIALS. YOU ARE RESPONSIBLE FOR THE SECURITY OF EQUIPMENT AND MATERIALS.
- IT IS YOUR AND YOUR SUBCONTRACTOR(S) RESPONSIBILITY TO EXAMINE THE JOB SITE BEFORE THE OPENING OF BID PROPOSALS. YOU MUST BECOME FAMILIAR WITH THE NATURE AND LOCATION OF THE WORK AND THE GENERAL AND LOCAL CONDITIONS, PARTICULARLY THOSE AFFECTING THE AVAILABILITY OF TRANSPORTATION, THE DISPOSAL, HANDLING, AND STORAGE OF MATERIALS, AVAILABILITY OF LABOR, WATER, ELECTRICITY, ROADS, THE UNCERTAINTIES OF WEATHER, THE CONDITIONS OF THE GROUND, SURFACE AND SUBSURFACE MATERIALS, THE EQUIPMENT AND FACILITIES NEEDED FOR AND DURING THE PERFORMANCE OF THE WORK. FAILURE BY YOU OR YOUR SUBCONTRACTOR(S) TO ACQUAINT YOURSELVES WITH THE INFORMATION AVAILABLE WILL NOT RELIEVE YOU OR YOUR SUBCONTRACTOR(S) FROM RESPONSIBILITY FOR PROPERLY ESTIMATING THE DIFFICULTY AND COST OF SUCCESSFULLY PERFORMING THE WORK.
- ELEVATIONS FOR PIPE INVERTS, FLOWLINES, TOPS OF GRATES, RIMS, ETC., ARE BASED ON THE TOPOGRAPHIC INFORMATION SHOWN. YOU WILL VERIFY ALL NECESSARY SURFACE ELEVATIONS IN THE FIELD AND NOTIFY THE TD OF ANY DISCREPANCIES WHICH MIGHT AFFECT THE OPERATION OF THE NEW FACILITIES BEFORE BREAKING GROUND FOR THE INSTALLATION. THE TD MUST BE CONTACTED IF ELEVATIONS ARE INCORRECT SO PROPER ADJUSTMENTS CAN BE MADE BEFORE THE INSTALLATION OF THE FACILITIES.
- EXCEPT FOR THOSE OBTAINED BY THE TD, YOU MUST OBTAIN, AT YOUR EXPENSE, ALL PERMITS, LICENSES, INSURANCE POLICIES, ETC., NECESSARY TO COMPLY WITH STATE AND LOCAL LAWS ASSOCIATED WITH THE PERFORMANCE OF THE WORK.
- YOU ARE RESPONSIBLE TO REVIEW THE CONTRACT DOCUMENTS FOR SUBMITTALS REQUIRED FOR COUNTY REVIEW AND ACCEPTANCE.
- THE COUNTY WILL PROVIDE CONSTRUCTION STAKING IN COMPLIANCE WITH SECTION 5-1.26 OF THE STANDARD SPECIFICATIONS.
- THE PLANS SHOW SLOPE LENGTHS FOR PIPE ROUNDED TO THE NEAREST FOOT. ALL PIPE LENGTHS AND INVERT ELEVATIONS SHOWN ON THE PLANS ARE TO THE CENTERLINE OF THE STRUCTURES TO WHICH THE PIPES ARE ATTACHED. SEE THE STANDARD SPECIFICATIONS FOR THE MAXIMUM ALLOWABLE DEFLECTION ANGLE AT EACH PIPE JOINT.
- YOU ARE RESPONSIBLE TO MAINTAIN THE GRADING LIMITS AS SHOWN ON THE PLANS, DETAILS, CROSS SECTIONS, AND AS DIRECTED BY THE ENGINEER. SEE SHEET iii OF THE PLANS FOR THE RAW EARTHWORK QUANTITIES ASSOCIATED WITH GRADING.

ABBREVIATIONS

NOTE: LOWER CASE TEXT WITHIN PLAN SET INDICATES EXISTING

△	DELTA = DEFLECTION ANGLE	MISC	MISCELLANEOUS
A	ARCH OR ASPEN	MOC	MID POINT ON CURVE
AB	AGGREGATE BASE	MOD	MODIFIED
ABAND	ABANDONED	MV	MEADOW VALE
ABC	ARTICULATED BLOCK CHANNEL	N	NORTH
AC	ASPHALT CONCRETE	NEG	NEGLIGIBLE
AP	ANGLE POINT	NGVD	NATIONAL GEODETIC VERTICAL DATUM
APN	ASSESSOR'S PARCEL NUMBER	NIC	NOT IN CONTRACT
BC	BEGIN CURVE	NTS	NOT TO SCALE
BCR	BEGIN CURB RETURN	OAE	OR APPROVED EQUAL
BGN	BEGIN	OC	ON CENTER
BLC	BLANKET-LINED CHANNEL	OD	OUTSIDE DIAMETER
BR	BOCA RATON	OG	ORIGINAL GROUND
BVCE	BEGIN VERTICAL CURVE ELEVATION	OH	OVERHEAD
BVCS	BEGIN VERTICAL CURVE STATION	OVEREX	OVEREXCAVATION
C	CEDAR	P	PINE
CALCS	CALCULATIONS	PC	POINT OF BEGINNING OF CURVE
CATV	CABLE TELEVISION	PCC	PORTLAND CEMENT CONCRETE OR POINT OF COMPOUND CURVE
CC	CENTER TO CENTER	PERF	PERFORATED
CF	CUBIC FEET OR CURB FACE	PCVCE	POINT OF COMPOUND VERTICAL CURVE ELEVATION
CHD	CHORD DIRECTION	PCVCS	POINT OF COMPOUND VERTICAL CURVE STATION
CIR	CIRCLE	PL	PROPERTY LINE
CL	CENTERLINE	POR	PORTION
CL	CLASS OR CENTERLINE	PP	POWER/UTILITY POLE
CLR	CLEAR	PRC	POINT OF REVERSE CURVE
CO	CURB OPENING OR CLEANOUT	PROP	PROPOSED
CO.	COUNTY	PRVCE	POINT OF REVERSE VERTICAL CURVE ELEVATION
CONC	CONCRETE	PRVCS	POINT OF REVERSE VERTICAL CURVE STATION
CONST	CONSTRUCT	PT	POINT OR POINT OF TANGENCY
CMP	CORRUGATED METAL PIPE	PUE	PUBLIC UTILITY EASEMENT
CSP	CORRUGATED STEEL PIPE	PVC	POLYVINYL CHLORIDE
CT	CALTRANS OR COURT	PVIE	POINT OF VERTICAL INTERSECTION ELEVATION
CTC	CALIFORNIA TAHOE CONSERVANCY	PVIS	POINT OF VERTICAL INTERSECTION STATION
CY	CUBIC YARD	PVMT	PAVEMENT
C&G	CURB AND GUTTER	R	RADIUS
D	DEPTH	R&R	REMOVE & REPLACE
DBL	DOUBLE	RC	RELATIVE COMPACTION
DET	DETAIL	RCP	REINFORCED CONCRETE PIPE
DI	DRAINAGE INLET OR DUCTILE IRON	RD	ROAD
DIA OR Ø	DIAMETER	REF	REFERENCE
DISS	DISSIPATOR	REQ'D	REQUIRED
DR	DRIVE	RLC	ROCK-LINED CHANNEL
D/W	DRIVEWAY	ROW	RIGHT-OF-WAY
E	EAST	RSF	REINFORCED SILT FENCE
EA	EACH	RSP	ROCK SLOPE PROTECTION
EC	END OF CURVE	RT	RIGHT
ECR	END OF CURB RETURN	RW	RETAINING WALL
ELEC	ELECTRIC	S	SOUTH OR SANITARY SEWER
ELEV	ELEVATION	SCO	SEWER CLEAN OUT
ENGR	ENGINEER	SD	STORM DRAIN
EP	EDGE OF PAVEMENT	SDMH	STORM DRAIN MANHOLE
ESA	ENVIRONMENTALLY SENSITIVE AREA	SEZ	STREAM ENVIRONMENT ZONE
ESMT	EASEMENT	SF	SQUARE FEET
EVCE	END VERTICAL CURVE ELEVATION	SHT	SHEET
EVCS	END VERTICAL CURVE STATION	SL	SLOPE LENGTH
EX OR EXIST	EXISTING	SMH	SEWER MANHOLE
F	FIR	ST	SEDIMENT TRAP OR STREET
FES	FLARED END SECTION	STA	STATION
FG	FINISHED GRADE	STD	STANDARD
FH	FIRE HYDRANT	STL	STEEL
FL	FLOWLINE	STPUD	SOUTH TAHOE PUBLIC UTILITY DISTRICT
FS	FINISH SURFACE	SWPPP	STORM WATER POLLUTION PREVENTION PLAN
G	GAS	T	TELEPHONE
GA	GAUGE	TBC	TOP BACK OF CURB
GB	GRADE BREAK	TBD	TOP BACK OF DIKE
GLS	GRASS-LINED SWALE	TBR	TO BE REMOVED
GW	GROUND WATER	TD	TOP OF DIKE
H	HORIZONTAL	TG	TOP OF GRATE
HDPE	HIGH DENSITY POLYETHYLENE	TTL	TOTAL
HP	HIGH POINT	TRANS	TRANSITION
HWL	HIGH WATER LINE	TRM	TURF REINFORCEMENT MAT
ID	INSIDE DIAMETER	TRPA	TAHOE REGIONAL PLANNING AGENCY
IE	INVERT ELEVATION	TYP	TYPICAL
INCR	INCREASE	UG	UNDERGROUND
INST	INSTALL	UKN	UNKNOWN
INTRXN	INTERSECTION	USFS	UNITED STATES FOREST SERVICE
L	LENGTH	V	VERTICAL
LC	LENGTH OF CHORD	W	WEST OR WATER
LF	LINEAR FEET	W/O	WITHOUT
LP	LOW POINT	WC	WILLOW CLUSTER
LT	LEFT	WV	WATER VALVE
MAT'L	MATERIAL		

LEGEND

EXISTING		PROPOSED	
(SCREENED AND/OR DASHED)	EXISTING (AS NOTED)	---	CENTERLINE
---	RIGHT-OF-WAY OR PROPERTY LINE	-----	SAWCUT (AS NOTED)
---	EASEMENT	XXXX.XX	ELEVATION
---	LAND CAPABILITY BOUNDARY	XXXX.X XXXX.XX	ELEVATION, EG CL, PROPOSED (PROFILE ONLY)
---	10' SEZ SETBACK	○ □	CSP INLET/RISER OR STORM DRAIN MANHOLE, DRAINAGE INLET
○ or ○	ROCK	VV	CUT OR FILL SLOPE
●	FOUND MONUMENT	(X)	DETAIL REF NUMBER SHEET NUMBER
△	SURVEY CONTROL POINT	■	ROCK
XXXX.X	ELEVATION	=====	SD PIPE (MATERIAL AS NOTED)
⊙	SEWER MANHOLE	-RSF-ESA-	REINFORCED SILT FENCE AND TYPE ESA FENCE
○ SCO	SEWER CLEAN OUT	▷	FLARED END SECTION
■	DRAINAGE INLET	#:#	SLOPE RATIO, H: V
gM	GAS METER	=====	ROCK-LINED CHANNEL
WV	WATER VALVE	-----	BLANKET-LINED CHANNEL
WM	WATER METER	⊗	TREE REMOVAL
⊙	MONITORING WELL	FLOWLINE
---w---w---	WATER LINE	---c---c---	CUT
---s---s---	SEWER LINE	---f---f---	FILL
---g---g---	GAS LINE		
---	STORM DRAIN		
---oh---oh---	OVERHEAD UTILITIES		
○	POWER/UTILITY POLE		
○	UTILITY POLE & GUY ANCHOR		
○	FIRE HYDRANT		
---	FENCE		
---	FLOWLINE		
○ 20"	TREE, DIAMETER AND TYPE		
○	STUMP		
○ WC	WILLOW CLUSTER		

UTILITIES

CABLE TELEVISION	CHARTER COMMUNICATIONS, (775) 588-1077
NATURAL GAS	SOUTHWEST GAS, (530) 543-3225
ELECTRIC	LIBERTY UTILITIES, (530) 541-6400
SEWER & WATER	SOUTH TAHOE PUD, (530) 544-6474
TELEPHONE	AT&T, (530) 888-2031
STORM DRAIN	CO. OF EL DORADO TRANSPORTATION DIVISION, (530) 573-3180

Drawing name: \\CD\elc\elc\TD-ST-Engineering\CDL_30_PROJECTS\030919\Engineering\WPA\WPA2_C01_#NOTES.dwg
 ORIGINAL SCALE IS IN INCHES
 FOR REDUCED PLANS
 REVISION

NUMBER	DATE	DESCRIPTION	BY



PREPARED UNDER THE SUPERVISION OF:

REGISTERED CIVIL ENGINEER

DATE: 06/12/17

DESIGNED: DMG
DRAWN: DMG
CHECKED: DWK
DATE: 4/2017
ROAD NUMBER: ---



COUNTY OF EL DORADO
COMMUNITY DEVELOPMENT SERVICES
TRANSPORTATION DEPARTMENT

COUNTRY CLUB HEIGHTS EROSION CONTROL PROJECT
PHASE I
GENERAL NOTES, ABBREVIATIONS, AND LEGEND

SHEET
ii
2 OF 19
CONTRACT NO.
PW 17-3116
CIP No.
95191

EARTHWORK SUMMARY BY IMPROVEMENT

ALL VOLUMES ARE IN CUBIC YARDS

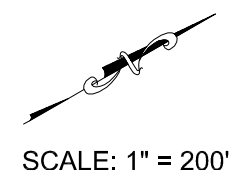
FACILITY	CUT	FILL	SALVAGED SOIL	HUMUS FOR TOPSOIL MIX	TOPSOIL MIX	MULCH
AC DIKE, AC TIE-IN, AC SWALES, AC RETURN, AB SHOULDER	142	69		8.5	34	17
PIPE, FES	2	1	38	1	4	2
CSP INLETS, DRAINAGE INLET	53	1		0.5	2	1
RLC, BLC	109	17		2	8	1.5
ROCK BOWLS, RSP, ROCK DISSIPATORS	33	3				
SLOPE GRADING	9	12		1	3	1.5
GRADE TO DRAIN, MISC GRADING	2	7				
TOTALS	350	110	38	13	51	23

THE QUANTITIES SHOWN HAVE BEEN CALCULATED USING THE TOPOGRAPHIC INFORMATION SHOWN ON THE PLANS. THE VOLUMES SHOWN ARE RAW, MEANING THAT NEITHER SHRINKAGE, SUBSIDENCE, NOR BULKING HAVE BEEN TAKEN INTO ACCOUNT. FOR THE QUANTITIES SHOWN IT IS ASSUMED THAT NO ROCK WAS ENCOUNTERED. IT IS YOUR RESPONSIBILITY TO REVIEW THESE QUANTITIES AND APPLY THE NECESSARY FACTORS TO DETERMINE THE VOLUME OF IMPORT MATERIAL NECESSARY (OR IF IT IS NECESSARY).

QUANTITY OF SALVAGED SOIL IN THE SUMMARY TABLE REFLECTS THAT AMOUNT REQUIRED FOR THE 3:1 RATIO FOR TOPSOIL MIX. YOU MAY SALVAGE SOIL FROM ANY OF THE LOCATIONS DESCRIBED IN SECTION 21-1.02D OF THE SPECIAL PROVISIONS AS LONG AS THE REQUIRED QUANTITY (38 CY) IS MET.



Drawing name: \\C:\Users\TD-SIT-Engineering\My Documents\17-0353 C 3 of 19\17-0353 C 3 of 19.dwg
FOR REDUCED PLANS ORIGINAL SCALE IS IN INCHES
2
1
0



SCALE: 1" = 200'

REVISION	NUMBER	DATE	DESCRIPTION	BY



PREPARED UNDER THE SUPERVISION OF:

 REGISTERED CIVIL ENGINEER
 DATE: 06/12/17

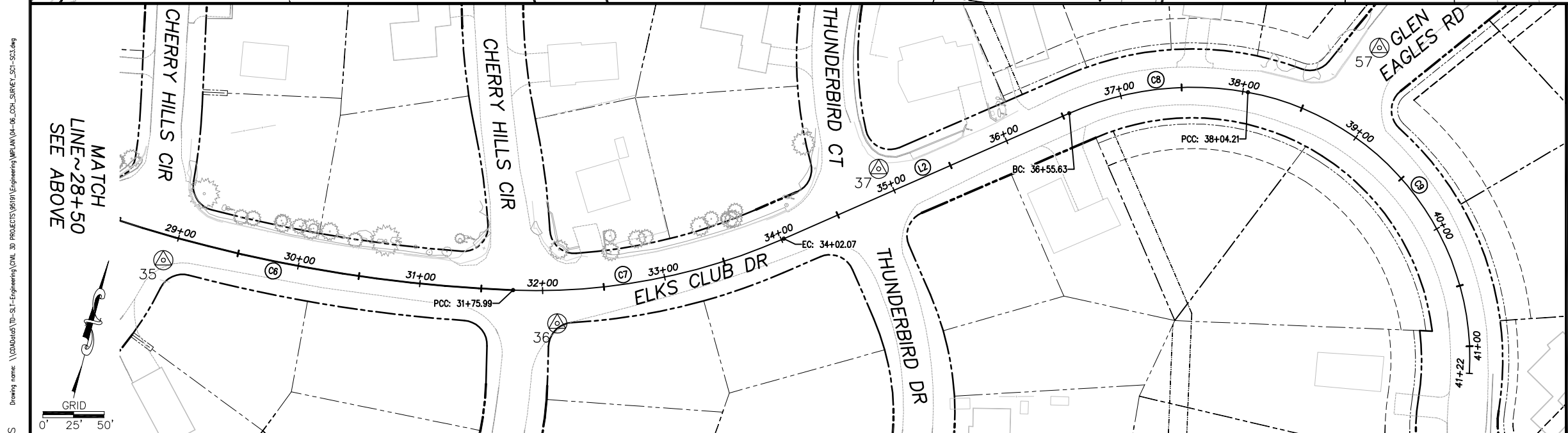
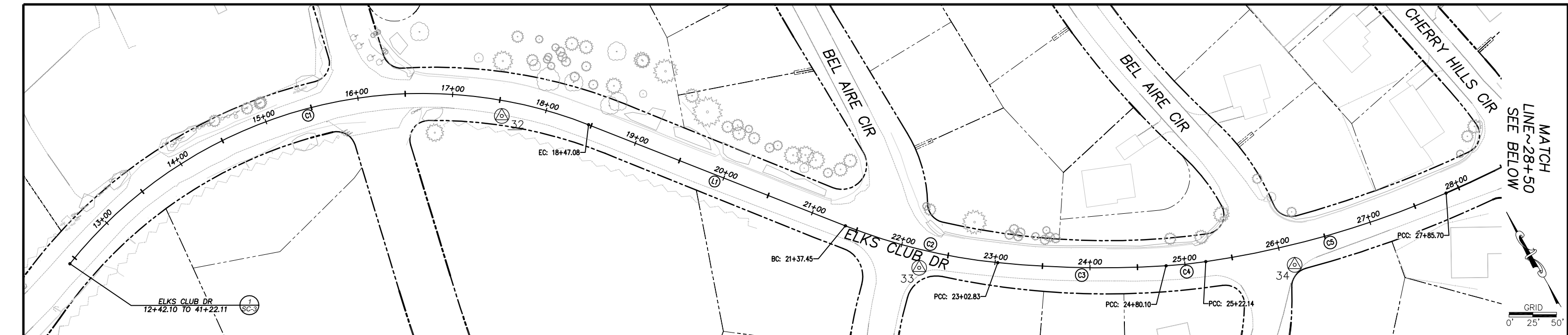
DESIGNED: DMG
 DRAWN: DMG
 CHECKED: DWK
 DATE: 4/2017
 ROAD NUMBER: ---



COUNTY OF EL DORADO
 COMMUNITY DEVELOPMENT SERVICES
 TRANSPORTATION DEPARTMENT

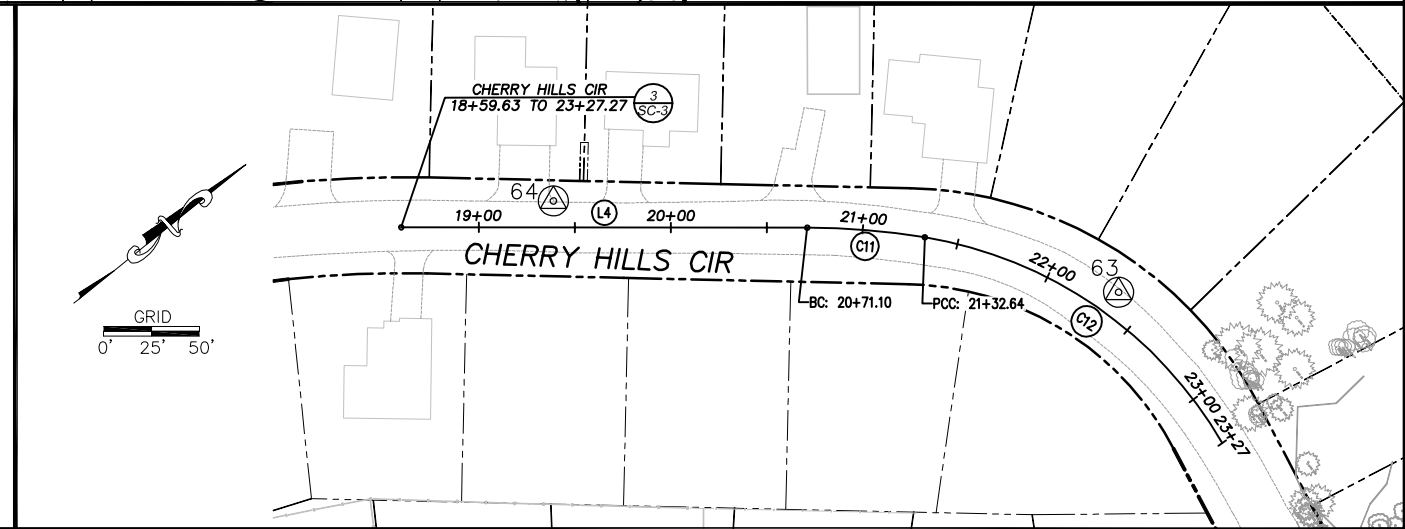
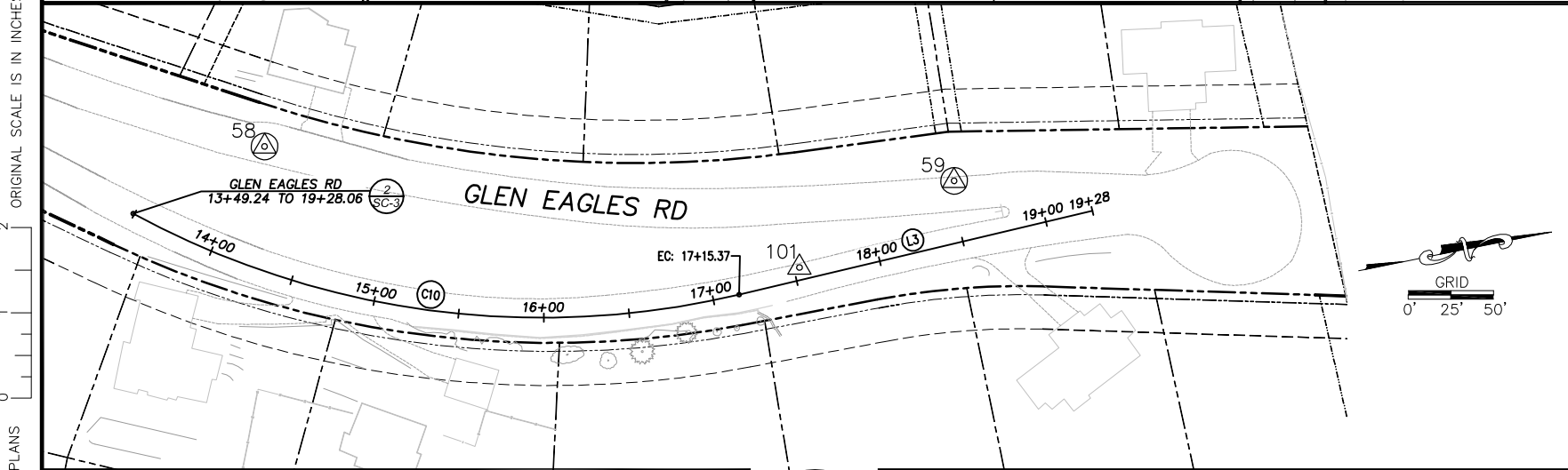
COUNTRY CLUB HEIGHTS EROSION CONTROL PROJECT
 PHASE I
 SHEET INDEX MAP AND EARTHWORK SUMMARY TABLE

SHEET iii
 3 OF 19
 CONTRACT NO. PW 17-3116
 CIP No. 95191



LEGEND

LINE LABEL	(C)
CURVE LABEL	(L)
PROJECT CONTROL	XX
SUPPLEMENTAL CONTROL	XX
RIGHT OF WAY	---
LOT LINE	---
SNOW STORAGE EASEMENT LINE	---
PUBLIC UTILITY EASEMENT LINE	---
SETBACK LINE	---
EDGE OF PAVEMENT	---



Drawing name: \\C:\Data\17-0353-EL-DORADO\17-0353-Engineering\17-0353-Engineering\PLAN\17-0353-C4_SURVEY_C4-1_SCSI.dwg
 ORIGINAL SCALE IS IN INCHES
 2
 1
 0
 FOR REDUCED PLANS

REVISION	NUMBER	DATE	DESCRIPTION	BY

PRELIMINARY

PREPARED UNDER THE SUPERVISION OF
 PROFESSIONAL LAND SURVEYOR
 DATE: JUNE ??, 2017

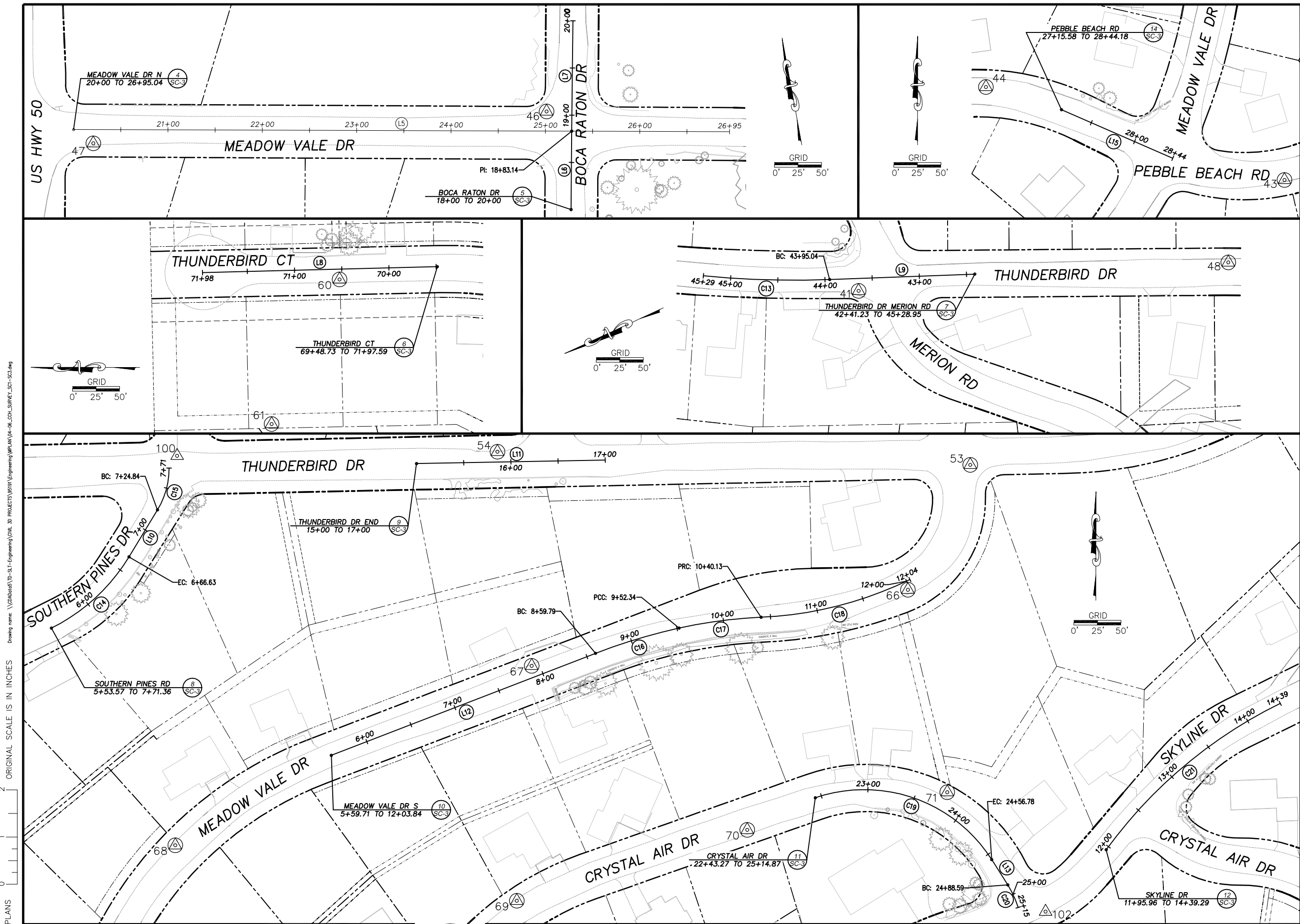
DESIGNED: DMG
 CHECKED: LAM
 ROAD NUMBER: ---
 DRAWN: KIS
 DATE: 4/2017



COUNTY OF EL DORADO
 COMMUNITY DEVELOPMENT SERVICES
 TRANSPORTATION DEPARTMENT

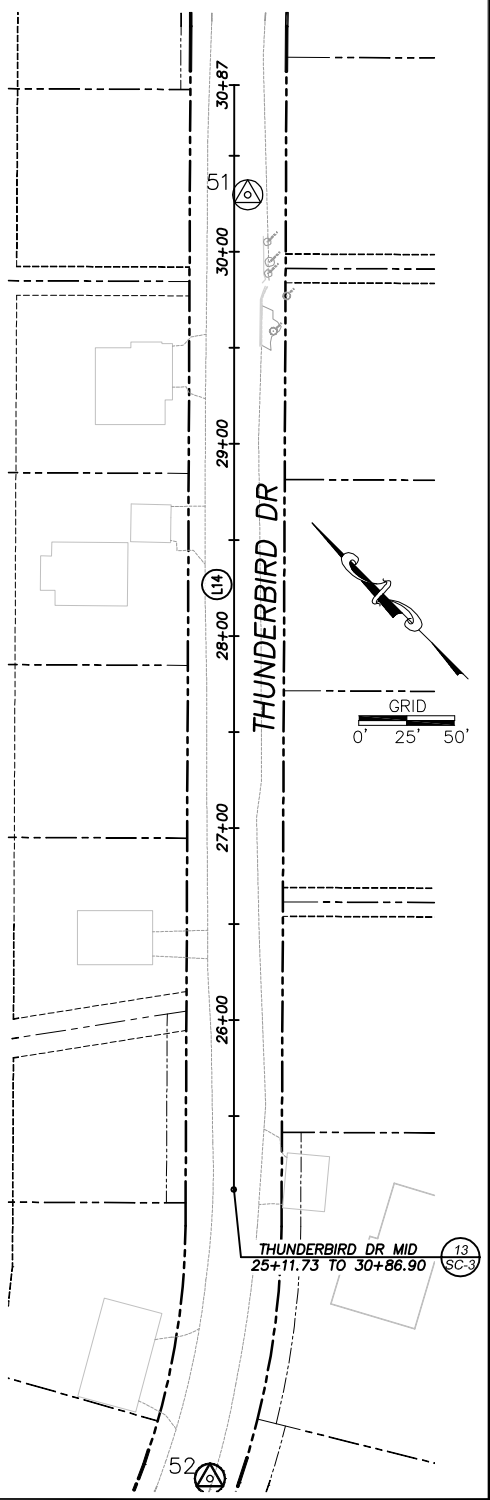
COUNTRY CLUB HEIGHTS EROSION CONTROL PROJECT
 PHASE I
 SURVEY CONTROL AND ALIGNMENTS

SHEET
SC-1
 4 OF 19
 CONTRACT NO.
PW 17-3116
 CIP No. **95191**



LEGEND

LINE LABEL	(Symbol: line with 'L')
CURVE LABEL	(Symbol: circle with 'C')
PROJECT CONTROL	(Symbol: 'XX' in a circle)
SUPPLEMENTAL CONTROL	(Symbol: 'XX' in a triangle)
RIGHT OF WAY	(Symbol: dashed line)
LOT LINE	(Symbol: solid line)
SNOW STORAGE EASEMENT LINE	(Symbol: long-dashed line)
PUBLIC UTILITY EASEMENT LINE	(Symbol: short-dashed line)
SETBACK LINE	(Symbol: dash-dot line)
EDGE OF PAVEMENT	(Symbol: solid line with inward ticks)



ORIGINAL SCALE IS IN INCHES
 2
 1
 0
 FOR REDUCED PLANS
 Drawing name: \\C:\Data\17-0353-01-Engineering\17-0353-01-06_C01_SURVEY_C01-SC3.dwg
 PROJECTS\17-0353-01-Engineering\17-0353-01-06_C01_SURVEY_C01-SC3.dwg

REVISION	NUMBER	DATE	DESCRIPTION	BY

PRELIMINARY

PREPARED UNDER THE SUPERVISION OF
 PROFESSIONAL LAND SURVEYOR
 JUNE ??, 2017

DESIGNED:	DMG	DRAWN:	KIS
CHECKED:	LAM	DATE:	4/2017
ROAD NUMBER:	---		



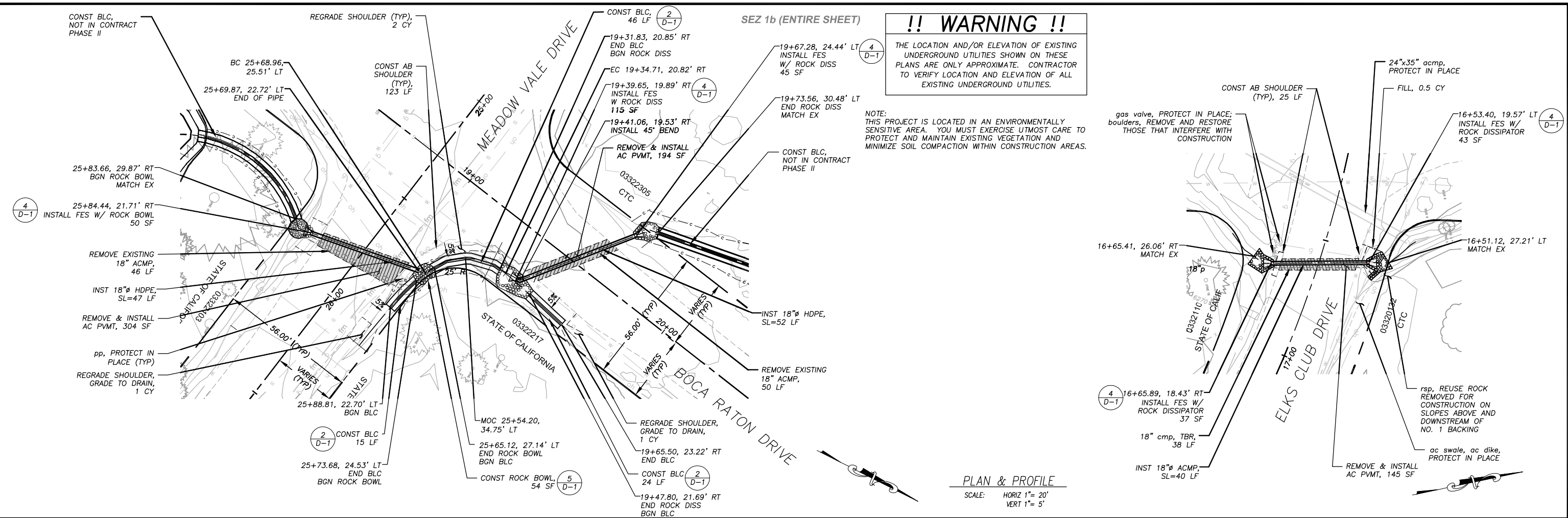
COUNTY OF EL DORADO
 COMMUNITY DEVELOPMENT SERVICES
 TRANSPORTATION DEPARTMENT

COUNTRY CLUB HEIGHTS EROSION CONTROL PROJECT
 PHASE I
 SURVEY CONTROL AND ALIGNMENTS

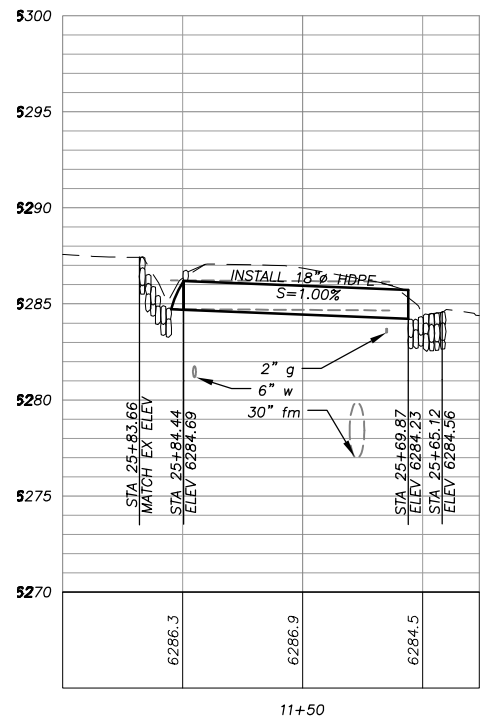
SHEET
SC-2
 5 OF 19
 CONTRACT NO.
PW 17-3116
 CIP No. **95191**

Drawing name: \\C:\Users\TD-SIT-Engineering\Civil_30_PROJECTS\031919\Engineering\MEADVALE-2_C04_P-1_TERR_P-7.dwg

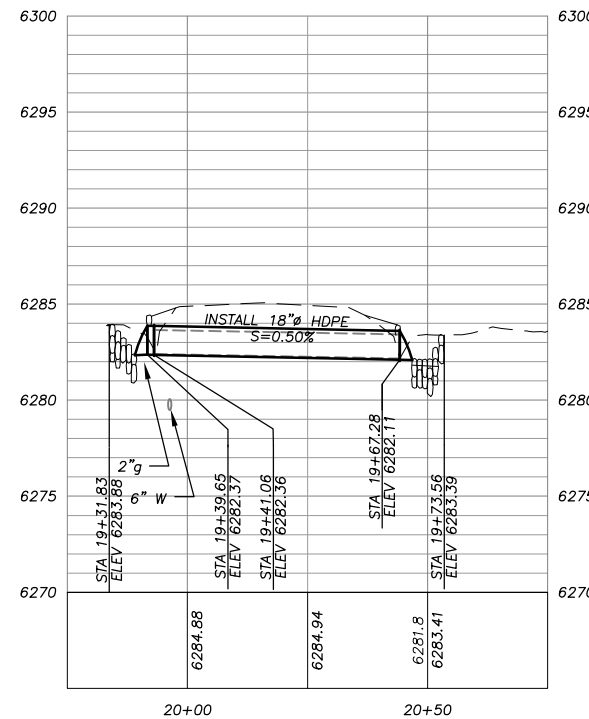
FOR REDUCED PLANS



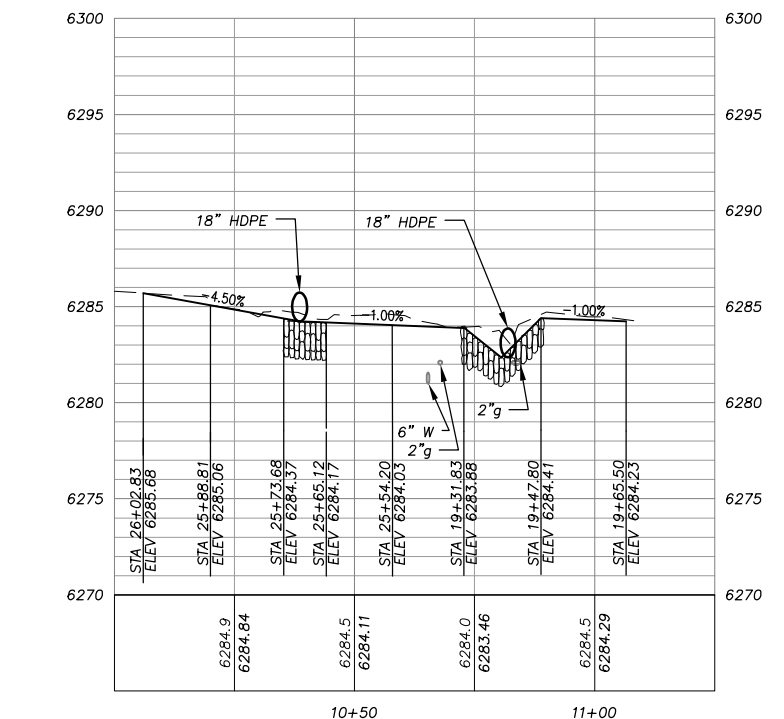
PLAN & PROFILE
SCALE: HORIZ 1" = 20'
VERT 1" = 5'



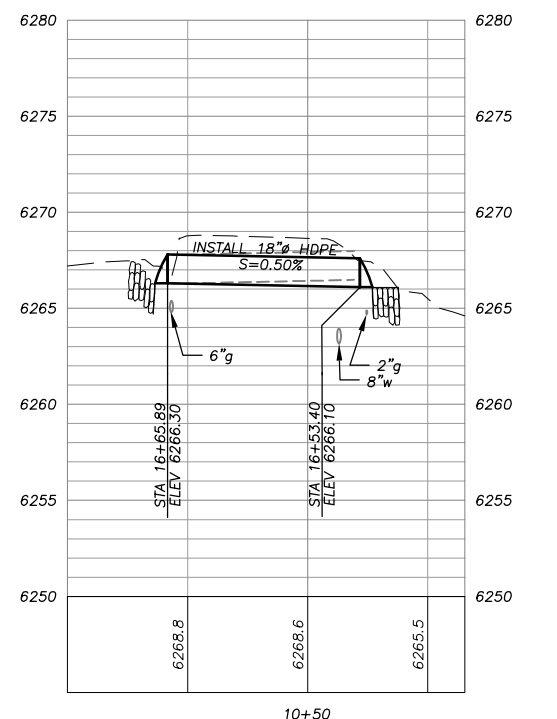
MEADOW VALE DR PIPE CROSSING



BOCA RATON DR PIPE CROSSING



BLC, CORNER OF MEADOW VALE DR AND BOCA RATON DR



ELKS CLUB DR PIPE CROSSING

REVISION	NUMBER	DATE	DESCRIPTION	BY



PREPARED UNDER THE SUPERVISION OF:

 REGISTERED CIVIL ENGINEER
 DATE: 06/12/17

DESIGNED: DMG
 DRAWN: DMG
 CHECKED: DWK
 DATE: 4/2017
 ROAD NUMBER: ---

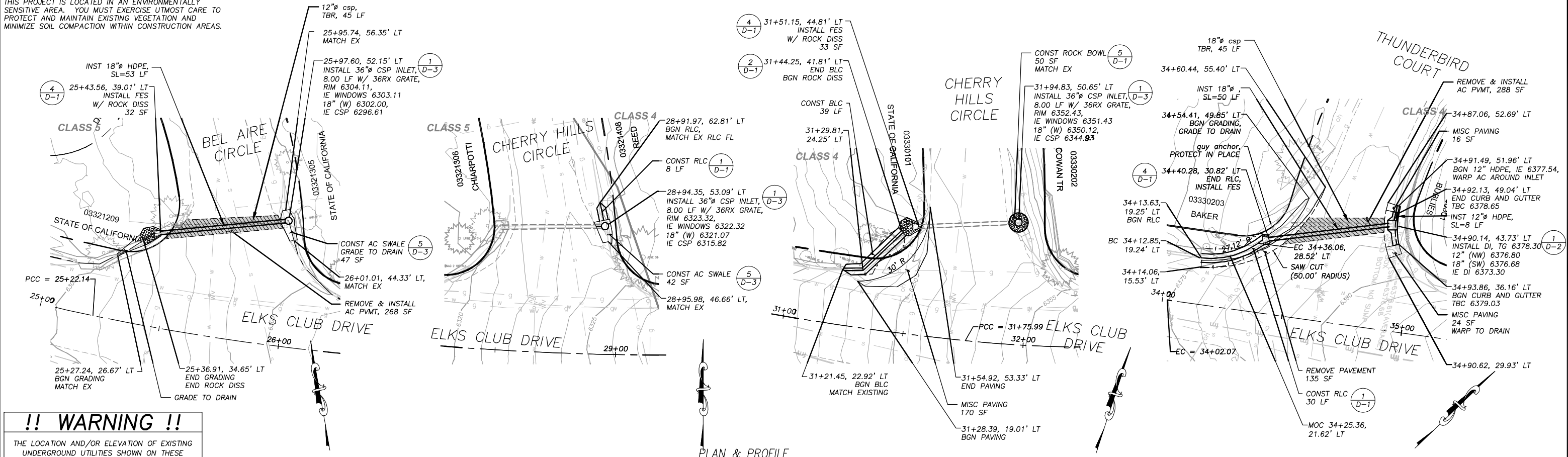


COUNTY OF EL DORADO
COMMUNITY DEVELOPMENT SERVICES
TRANSPORTATION DEPARTMENT

COUNTRY CLUB HEIGHTS EROSION CONTROL PROJECT
PHASE I
MEADOW VALE DR & BOCA RATON DR
PLAN & PROFILE

SHEET
P-1
 7 OF 19
 CONTRACT NO.
PW 17-3116
 CIP No.
95191

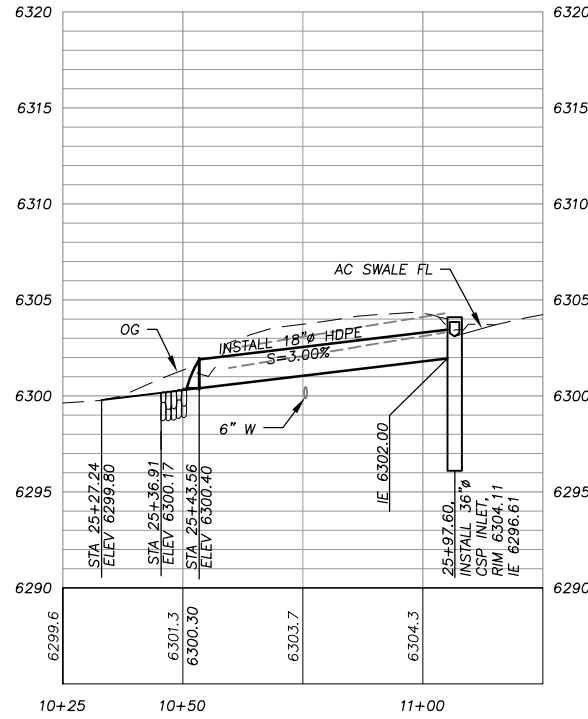
NOTE:
THIS PROJECT IS LOCATED IN AN ENVIRONMENTALLY SENSITIVE AREA. YOU MUST EXERCISE UTMOST CARE TO PROTECT AND MAINTAIN EXISTING VEGETATION AND MINIMIZE SOIL COMPACTION WITHIN CONSTRUCTION AREAS.



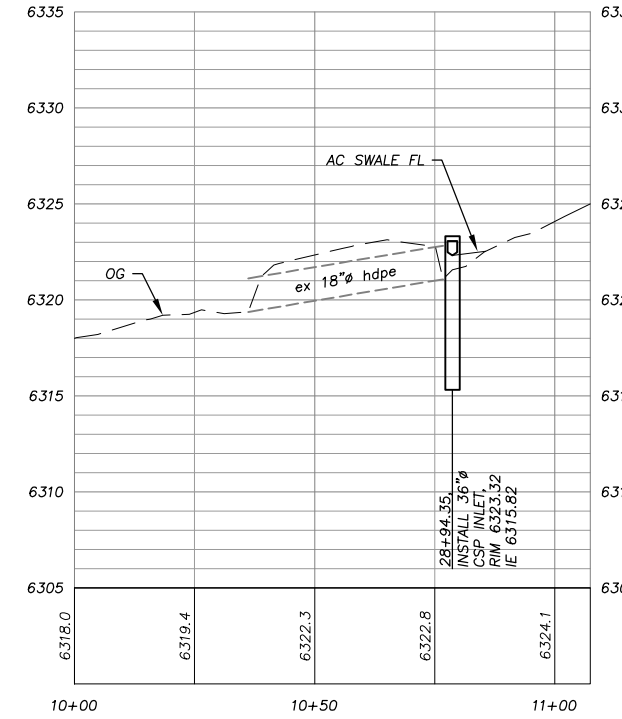
!! WARNING !!
THE LOCATION AND/OR ELEVATION OF EXISTING UNDERGROUND UTILITIES SHOWN ON THESE PLANS ARE ONLY APPROXIMATE. CONTRACTOR TO VERIFY LOCATION AND ELEVATION OF ALL EXISTING UNDERGROUND UTILITIES.

PLAN & PROFILE
SCALE: HORIZ 1" = 20'
VERT 1" = 5'

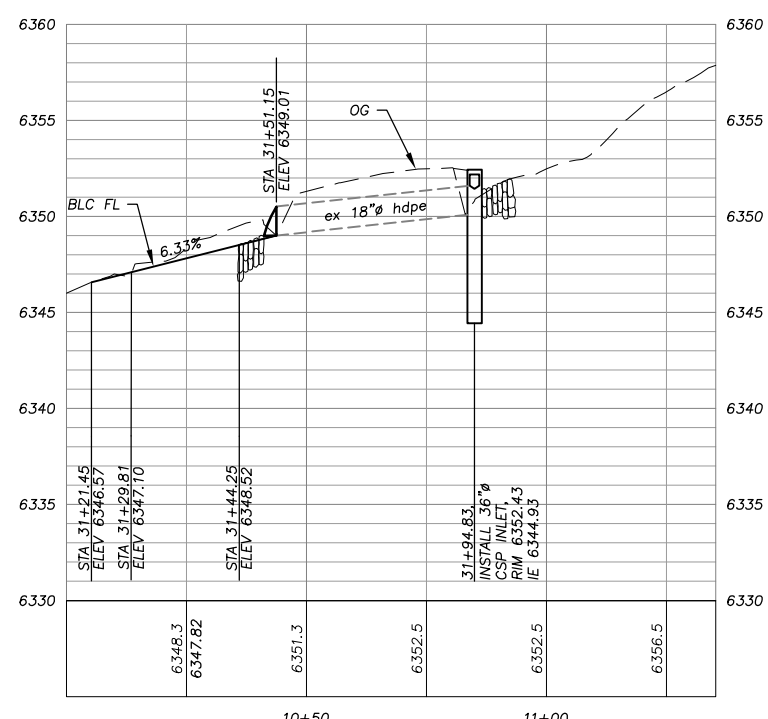
DRAWING NAME: \\\CD\Users\TD-SLT-Engineering\Civil_3D_PROJECTS\031919\Engineering\WPA\17-0353-C8-P1-17E11-P-7.dwg
2 ORIGINAL SCALE IS IN INCHES
FOR REDUCED PLANS



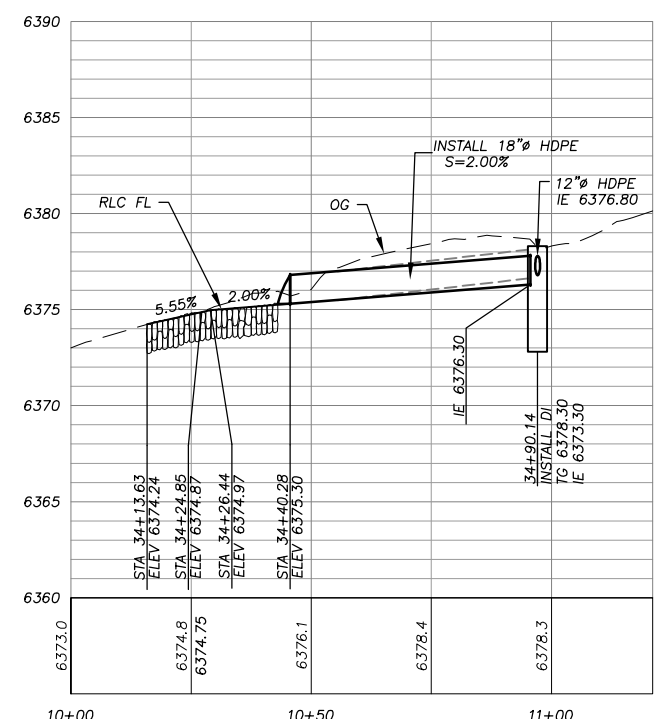
CSP INLET
ELKS CLUB STA 25+97.60



CSP INLET
ELKS CLUB STA 28+94.35



CSP INLET
ELKS CLUB STA 31+94.83



DRAIN INLET
ELKS CLUB STA 34+90.14

REVISION	NUMBER	DATE	DESCRIPTION	BY



PREPARED UNDER THE SUPERVISION OF:
[Signature]
REGISTERED CIVIL ENGINEER
DATE: 06/12/17

DESIGNED: DMG
DRAWN: DMG
CHECKED: DWK
DATE: 4/2017
ROAD NUMBER: ---



COUNTY OF EL DORADO
COMMUNITY DEVELOPMENT SERVICES
TRANSPORTATION DEPARTMENT

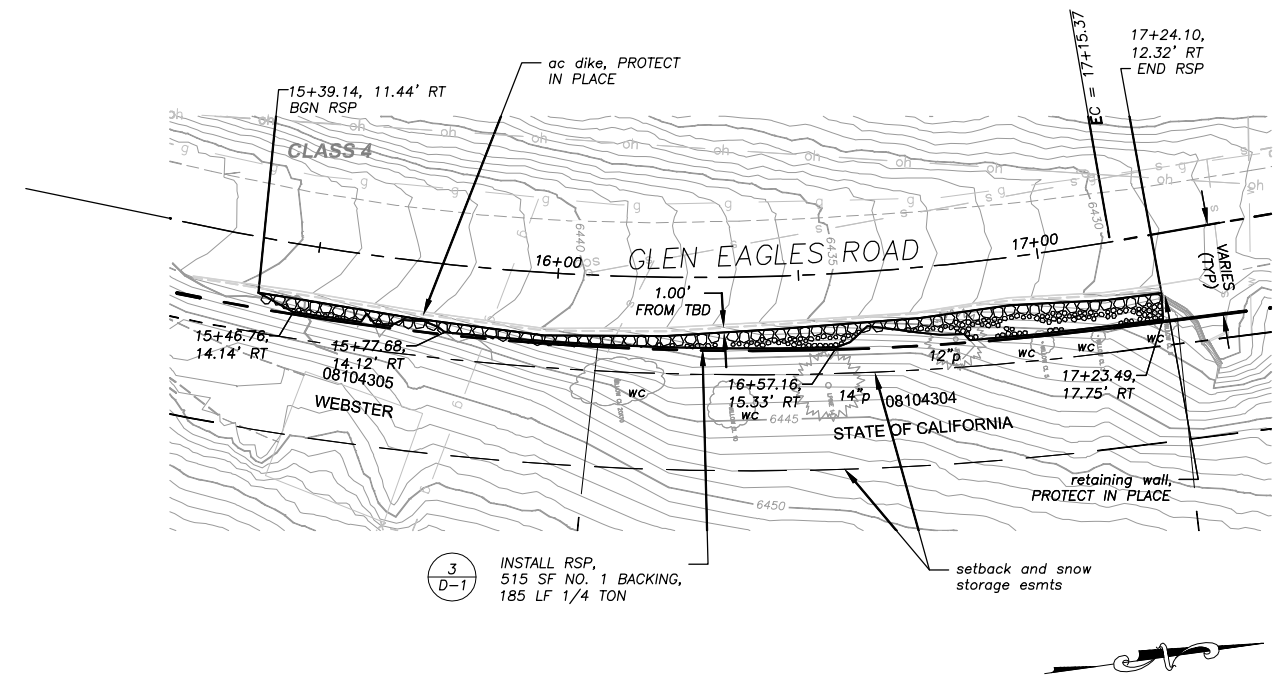
COUNTRY CLUB HEIGHTS EROSION CONTROL PROJECT
PHASE I
ELKS CLUB DR &
BEL AIRE CIR, CHERRY HILLS CIR, THUNDERBIRD CT

SHEET
P-2
8 OF 19
CONTRACT NO.
PW 17-3116
CIP No.
95191

Drawing name: \\C:\Users\TD-SLT-Engineering\Civil_3D_PROJECTS\17-3116\Engineering\17-3116\17-3116_P-7.dwg
FOR REDUCED PLANS ORIGINAL SCALE IS IN INCHES
2
1
0

NOTE:
THIS PROJECT IS LOCATED IN AN ENVIRONMENTALLY SENSITIVE AREA. YOU MUST EXERCISE UTMOST CARE TO PROTECT AND MAINTAIN EXISTING VEGETATION AND MINIMIZE SOIL COMPACTION WITHIN CONSTRUCTION AREAS.

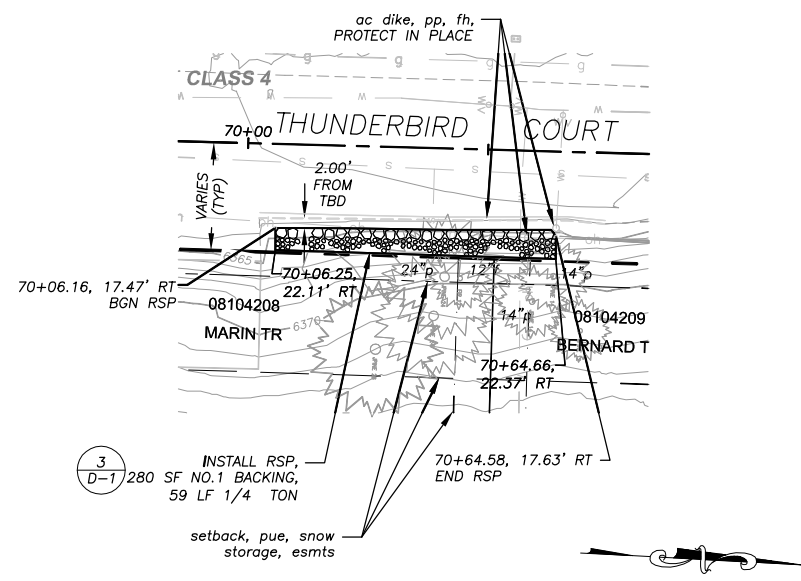
!! WARNING !!
THE LOCATION AND/OR ELEVATION OF EXISTING UNDERGROUND UTILITIES SHOWN ON THESE PLANS ARE ONLY APPROXIMATE. CONTRACTOR TO VERIFY LOCATION AND ELEVATION OF ALL EXISTING UNDERGROUND UTILITIES.



GLEN EAGLES STA 15+39± TO STA 17+24±

PLAN & PROFILE
SCALE: HORIZ 1" = 20'
VERT 1" = 5'

NOTES:
RSP QUANTITIES SHOWN ARE APPROXIMATE. FINAL PAY QUANTITIES WILL BE BASED ON FIELD MEASUREMENTS.
ON SLOPES TO RECEIVE RSP, PROTECT EXISTING ESTABLISHED VEGETATION IN PLACE.
OMIT 1/4 TON ROCK WHERE SHOWN.
EXISTING ROCK ON SLOPES TO RECEIVE RSP THAT MEET ROCK SPECIFICATIONS WILL BE INCORPORATED INTO THE PROPOSED RSP.



THUNDERBIRD STA 70+06± TO STA 70+64±

REVISION	NUMBER	DATE	DESCRIPTION	BY



PREPARED UNDER THE SUPERVISION OF:
[Signature]
REGISTERED CIVIL ENGINEER
DATE: 06/12/17

DESIGNED: DMG
DRAWN: DMG
CHECKED: DWK
DATE: 4/2017
ROAD NUMBER: ---



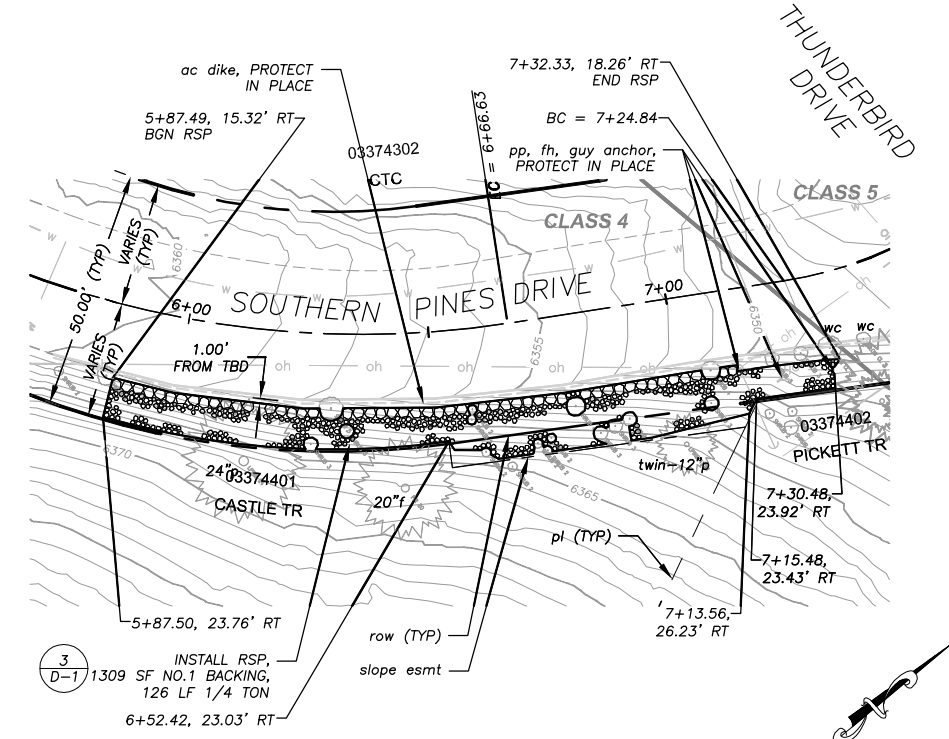
COUNTY OF EL DORADO
COMMUNITY DEVELOPMENT SERVICES
TRANSPORTATION DEPARTMENT

COUNTRY CLUB HEIGHTS EROSION CONTROL PROJECT
PHASE I
GLEN EAGLES RD, THUNDERBIRD CT

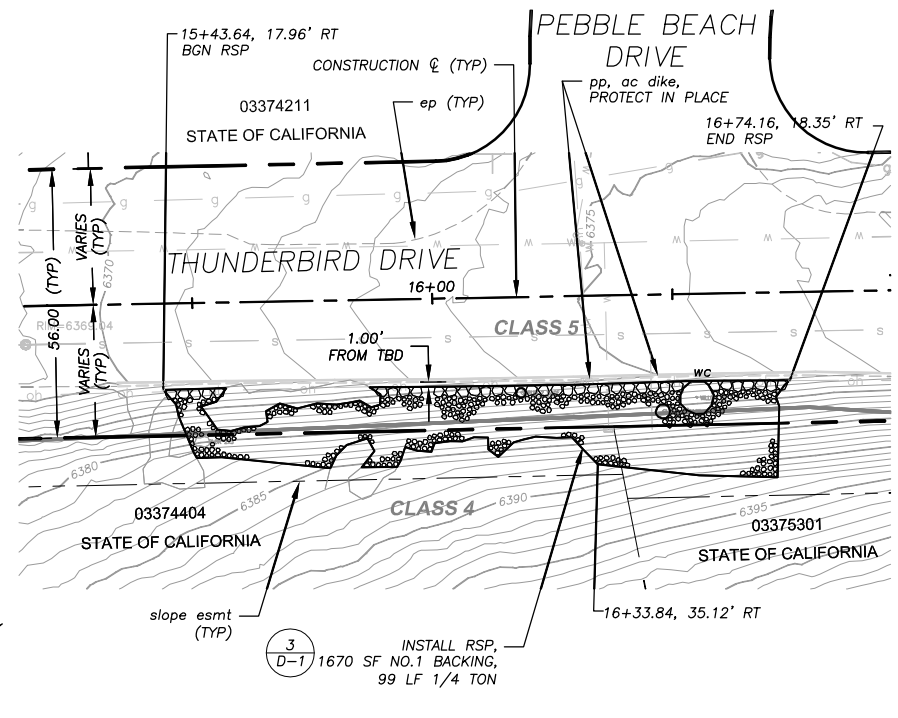
SHEET
P-3
9 OF 19
CONTRACT NO.
PW 17-3116
CIP No.
95191

!! WARNING !!
 THE LOCATION AND/OR ELEVATION OF EXISTING UNDERGROUND UTILITIES SHOWN ON THESE PLANS ARE ONLY APPROXIMATE. CONTRACTOR TO VERIFY LOCATION AND ELEVATION OF ALL EXISTING UNDERGROUND UTILITIES.

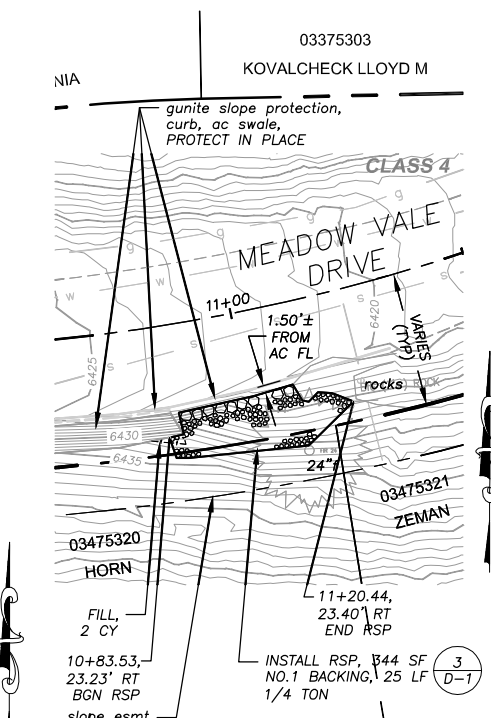
NOTE:
 THIS PROJECT IS LOCATED IN AN ENVIRONMENTALLY SENSITIVE AREA. YOU MUST EXERCISE UTMOST CARE TO PROTECT AND MAINTAIN EXISTING VEGETATION AND MINIMIZE SOIL COMPACTION WITHIN CONSTRUCTION AREAS.



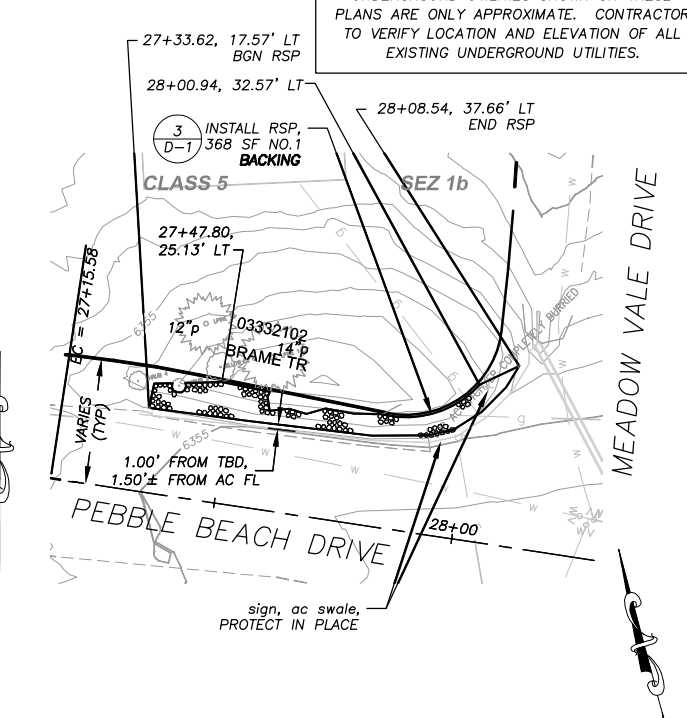
SOUTHERN PINES STA 5+87± TO STA 7+32±



THUNDERBIRD STA 15+43± TO STA 16+74±

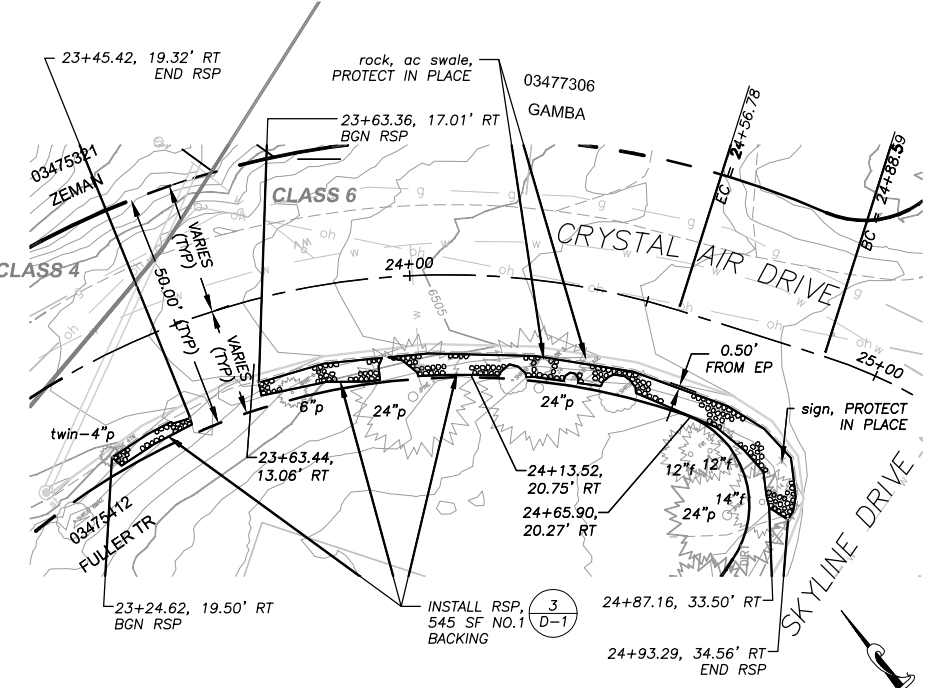


MEADOW VALE STA 10+83± TO STA 11+20±

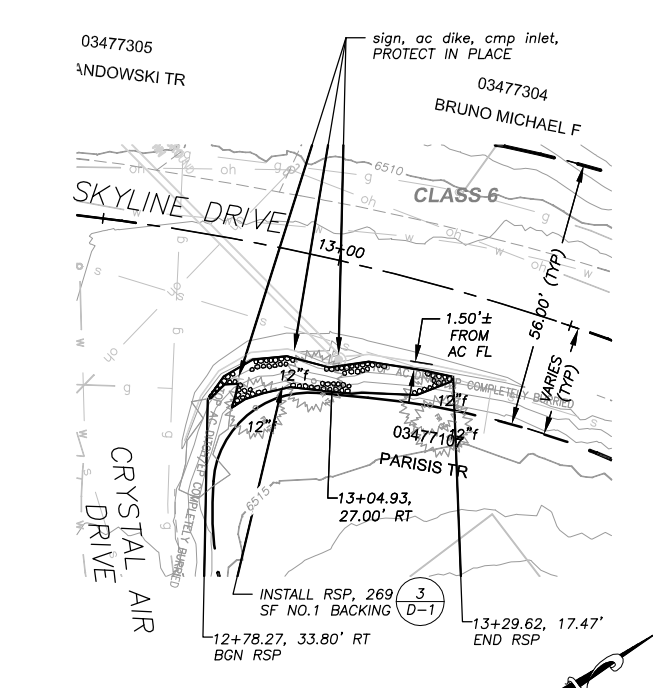


PEBBLE BEACH STA 27+33± TO STA 28+08±

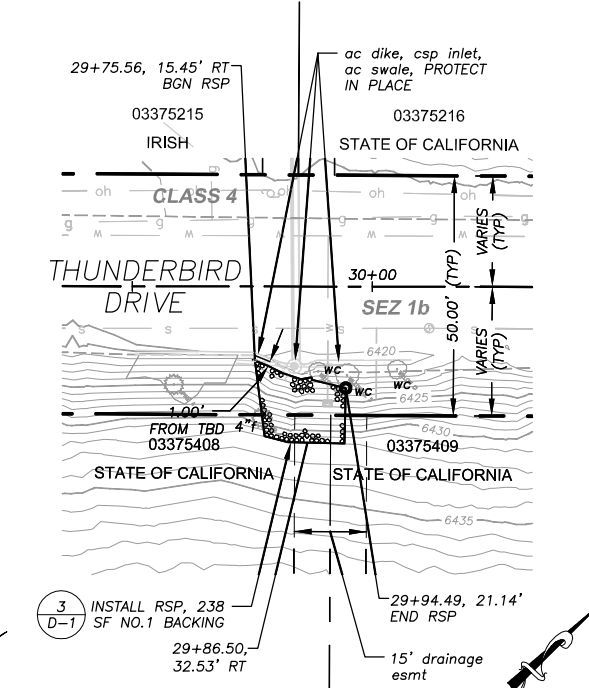
PLAN
 SCALE: HORIZ 1" = 20'



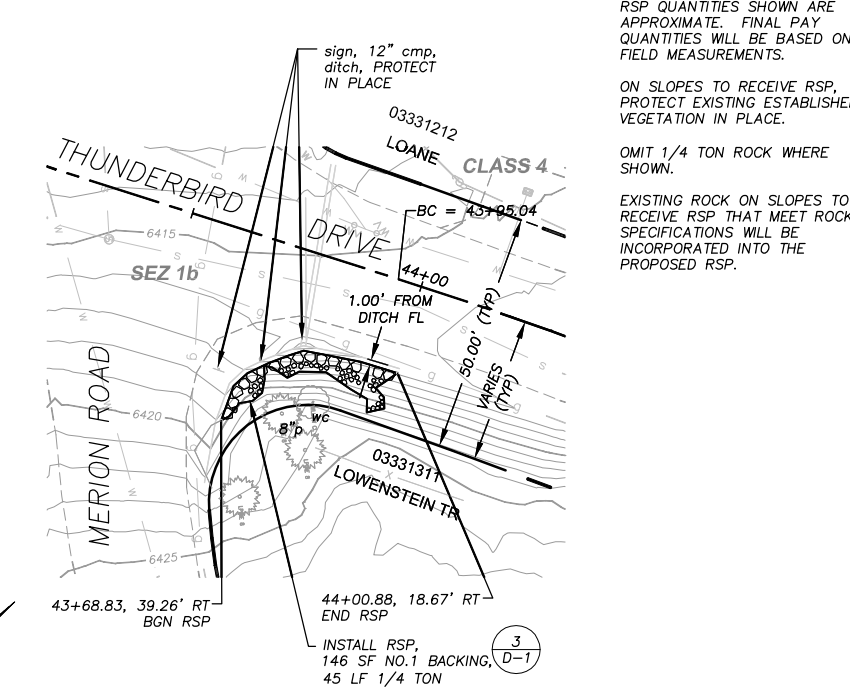
CRYSTAL AIR STA 23+24± TO STA 24+93±



SKYLINE STA 12+78± TO STA 13+29±



THUNDERBIRD STA 29+75± TO STA 29+94±



THUNDERBIRD STA 43+68± TO STA 44+00±

NOTES:
 RSP QUANTITIES SHOWN ARE APPROXIMATE. FINAL PAY QUANTITIES WILL BE BASED ON FIELD MEASUREMENTS.
 ON SLOPES TO RECEIVE RSP, PROTECT EXISTING ESTABLISHED VEGETATION IN PLACE.
 OMIT 1/4 TON ROCK WHERE SHOWN.
 EXISTING ROCK ON SLOPES TO RECEIVE RSP THAT MEET ROCK SPECIFICATIONS WILL BE INCORPORATED INTO THE PROPOSED RSP.

DRAWING NAME: \\\D:\el_dorado\17-3116\17-3116-CIP-1-17-3116-P-7.dwg
 ORIGINAL SCALE IS IN INCHES
 FOR REDUCED PLANS

REVISION	NUMBER	DATE	DESCRIPTION	BY



PREPARED UNDER THE SUPERVISION OF:
 [Signature]
 REGISTERED CIVIL ENGINEER
 DATE: 06/12/17

DESIGNED: DMG
 DRAWN: DMG
 CHECKED: DWK
 DATE: 4/2017
 ROAD NUMBER: ---



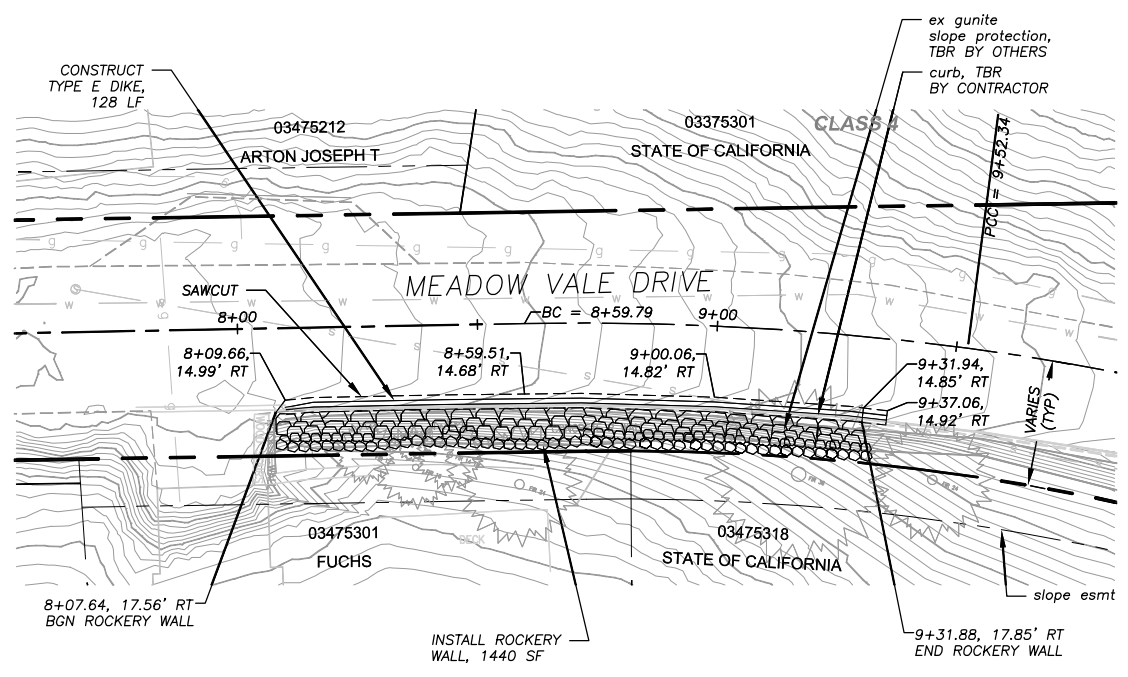
COUNTY OF EL DORADO
 COMMUNITY DEVELOPMENT SERVICES
 TRANSPORTATION DEPARTMENT

COUNTRY CLUB HEIGHTS EROSION CONTROL PROJECT
 PHASE I
 SOUTHERN PINES DR, THUNDERBIRD DR, MEADOW VALE DR, PEBBLE BEACH DR, CRYSTAL AIR DR, SKYLINE DR

SHEET
P-4
 10 OF 19
 CONTRACT NO.
PW 17-3116
 CIP No.
95191

!! WARNING !!
 THE LOCATION AND/OR ELEVATION OF EXISTING UNDERGROUND UTILITIES SHOWN ON THESE PLANS ARE ONLY APPROXIMATE. CONTRACTOR TO VERIFY LOCATION AND ELEVATION OF ALL EXISTING UNDERGROUND UTILITIES.

NOTE:
 THIS PROJECT IS LOCATED IN AN ENVIRONMENTALLY SENSITIVE AREA. YOU MUST EXERCISE UTMOST CARE TO PROTECT AND MAINTAIN EXISTING VEGETATION AND MINIMIZE SOIL COMPACTION WITHIN CONSTRUCTION AREAS.



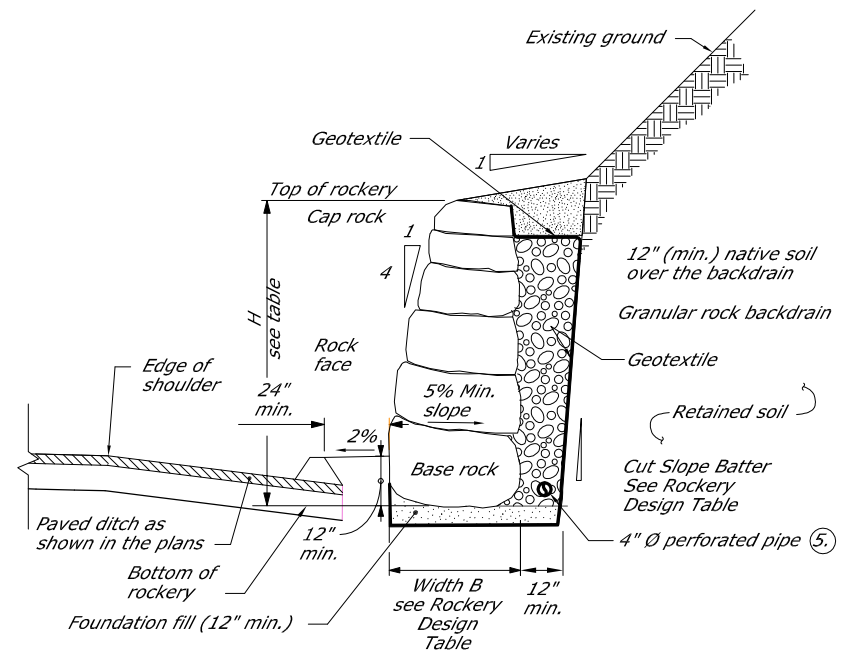
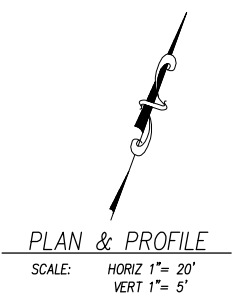
GENERAL NOTES:

- CONTRACTOR SHALL VERIFY ALL CONTROLLING FIELD DIMENSIONS BEFORE ORDERING OR CONSTRUCTION ROCK SLOPE PROTECTION AT THIS LOCATION.
- THE ROCKERY WALL DETAILS AS SHOWN ARE TO BE USED A GUIDE. CONTRACTOR SHALL PROVIDE A ROCKERY WALL SUBMITTAL WHICH MEETING THE REQUIREMENTS OF THESE PLANS AND SPECIAL PROVISIONS. ACTUAL DIMENSIONS MAY VARY IN ACCORDANCE WITH DESIGN REQUIREMENTS. ROCKERY WALL SUBMITTAL SHALL BE STAMPED BY A REGISTERED CIVIL ENGINEER IN THE STATE OF CALIFORNIA.
- UNLESS OTHERWISE NOTED, ALL WORK SHOWN ON THIS PAGE IS INCLUDED IN THE PER SQUARE FOOT PRICE FOR "ROCK SLOPE PROTECTION (ROCKERY WALL, METHOD A)".
- LOCATIONS OF UTILITY FACILITIES SHOWN ON THESE PLANS ARE APPROXIMATE AND SHALL BE VERIFIED BY THE CONTRACTOR PRIOR TO CONSTRUCTION.
- REFER TO THE CONTRACT SPECIFICATIONS AND GEOTECHNICAL REPORT (SUPPLEMENTAL PROJECT INFORMATION) FOR DESIGN PARAMETERS.

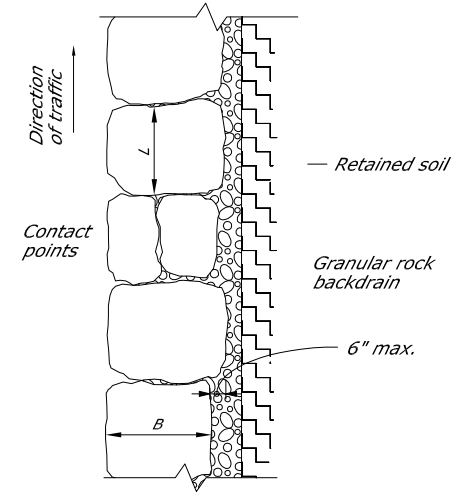
STATIONING	SIDE	MAXIMUM HEIGHT, H (FT)	MINIMUM BASE ROCK WIDTH, B (FT)	MAXIMUM CUT SLOPE BATTER V:H 1	ROCKERY (SF)
8+07.64 TO 9+00	RT	12	6	Per Engineer	1116
9+00 TO 9+31.88	RT	11	5.5	Per Engineer	352
TOTAL					1468

1. See Note 2 above

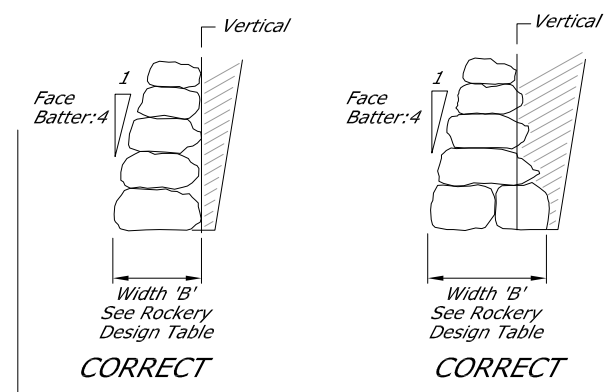
MEADOW VALE STA 8+07± TO STA 9+31±



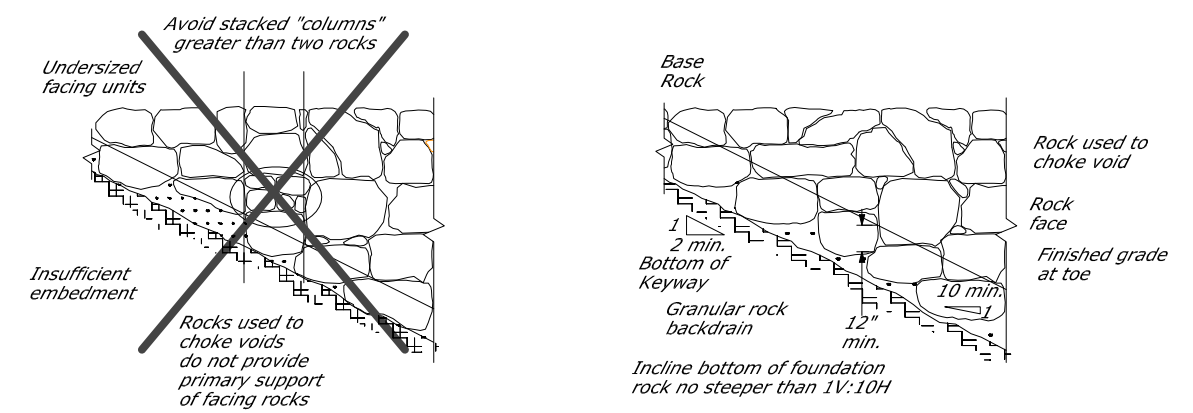
ROCKERY WITH PAVED DITCH TYPICAL SECTION



BASE ROCK PLAN VIEW
See Note 2



SECTION PROPERTIES



PARTIAL TYPICAL PROFILE

ROCKERY WALL WITH AC DIKE

Drawing name: \\CD\elorus\TD-SIT-Engineering\Civil_3D_PROJECTS\17-3116\Engineering\17-3116-P-5.dwg
 ORIGINAL SCALE IS IN INCHES
 FOR REDUCED PLANS
 REVISION

REVISION	NUMBER	DATE	DESCRIPTION	BY



PREPARED UNDER THE SUPERVISION OF:
 [Signature]
 REGISTERED CIVIL ENGINEER
 DATE: 06/12/17

DESIGNED: DMG
 DRAWN: DMG
 CHECKED: DWK
 DATE: 4/2017
 ROAD NUMBER: ---

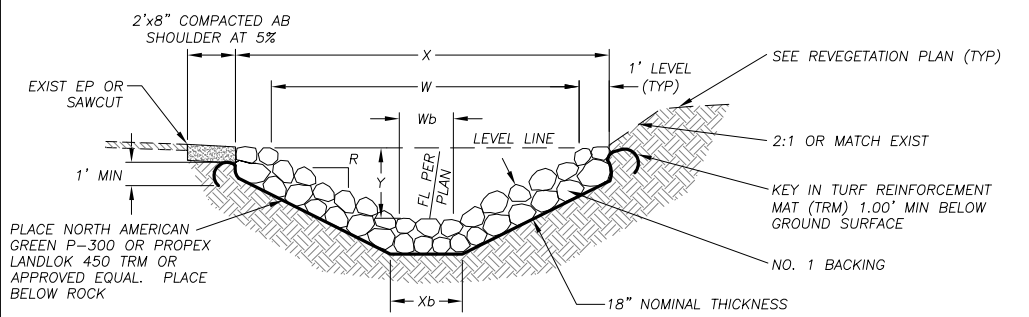


COUNTY OF EL DORADO
 COMMUNITY DEVELOPMENT SERVICES
 TRANSPORTATION DEPARTMENT

COUNTRY CLUB HEIGHTS EROSION CONTROL PROJECT
 PHASE I
 ROCK SLOPE PROTECTION (ROCKERY WALL)
 MEADOW VALE DR

SHEET
P-5
 11 OF 19
 CONTRACT NO.
PW 17-3116
 CIP No.
95191

Drawing name: \N\Cad\AutoCAD\T-1-Engineering\CIVIL 3D PROJECTS\95191\Engineering\WRL-AN\13-15 CCH D-1 D-3.dwg
FOR REDUCED PLANS ORIGINAL SCALE IS IN INCHES

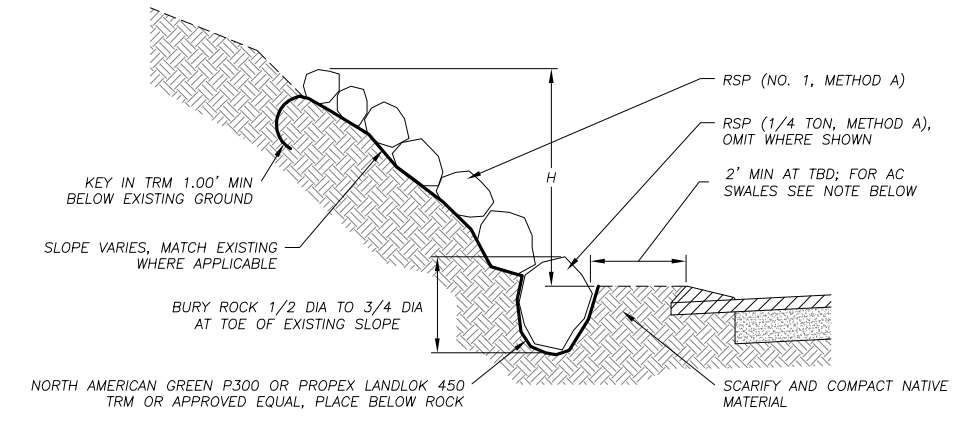


PLAN SHEET	STATIONING	LF	TOP WIDTH, X (EXCAVATION)	TOP WIDTH, W (ROCK FS)	BOTTOM WIDTH, Xb (EXCAVATION)	BOTTOM WIDTH, Wb (ROCK FS)	DEPTH, Y	SLOPE RATIO, R
P-2	28+91.97 TO 28+90.70	10	5.58'	3.58'	0	0	0.90'	2:1
P-2	34+13.63 TO 34+40.28	30	5.58'	3.58'	0	0	0.90'	2:1

NOTE:
"Y" DEPICTS MIN REQ'D DEPTH OF CHANNEL. FINISHED TOP WIDTH AND SIDE SLOPE HEIGHT MAY VARY DEPENDING ON EXISTING TERRAIN AND THE NEED TO MAINTAIN A 2' SHOULDER AT ROADWAYS. SEE PLANS AND CROSS-SECTIONS FOR GRADING LIMITS.

ROCK-LINED CHANNEL (RLC)

1
D-1

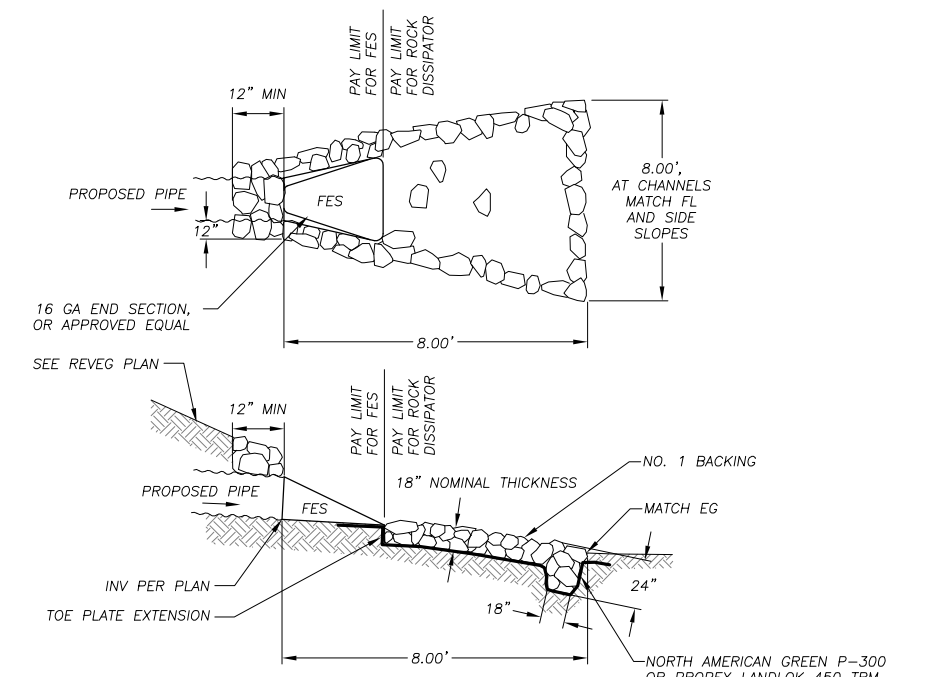


PLAN SHEET	STREET AND STATIONING	AVERAGE HEIGHT, H	SLOPE RATIO, R
P-3	GLEN EAGLES 15+39.14 TO 17+24.10	2'± TO 5'±	1.5:1±
P-3	THUNDERBIRD 70+06.16 TO 70+64.66	3'±	2:1±
P-4	SOUTHERN PINES 5+87.50 TO 7+32.33	6'±	1.5:1±
P-4	THUNDERBIRD 5+43.64 TO 16+74.16	10'±	1.5:1±
P-4	MEADOW VALE 10+83.53 TO 11+20.44	8'±	1.5:1±
P-4	PEBBLE BEACH 27+33.62 TO 28+08.54	3'±	3:1±
P-4	CRYSTAL AIR 23+24.62 TO 23+45.42	1'±	2.5:1±
P-4	CRYSTAL AIR 23+63.36 TO 24+93.29	2'±	2.5:1±
P-4	SKYLINE 12+78.27 TO 13+29.62	1'±	2:1±
P-4	THUNDERBIRD 29+75.56 TO 29+94.49	11'±	1:1±
P-4	THUNDERBIRD 43+68.83 TO 44+00.88	3'±	1.5:1±

NOTE:
SETBACK FROM ROCK AND EDGE OF AC SWALES AND TRANSITIONS WILL BE 1' AT ALDER/10TH AND 0' AT 9TH/ALDER AND 9TH/OAK.

ROCK SLOPE PROTECTION

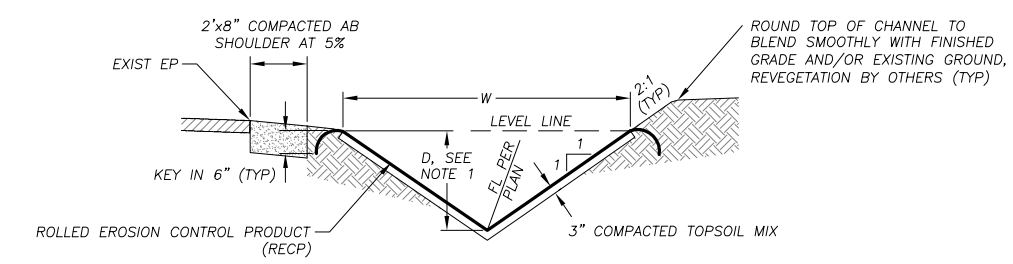
3
D-1



NOTES:
1. ALL FES SHALL BE GALVANIZED.
2. CONSTRUCT THE 2'x2'x8\"/>

FES AND ROCK DISSIPATOR

4
D-1

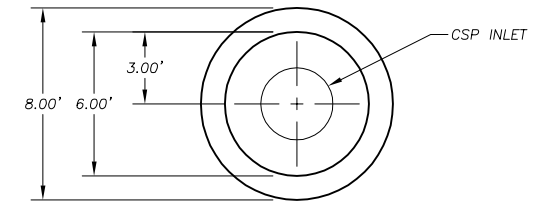
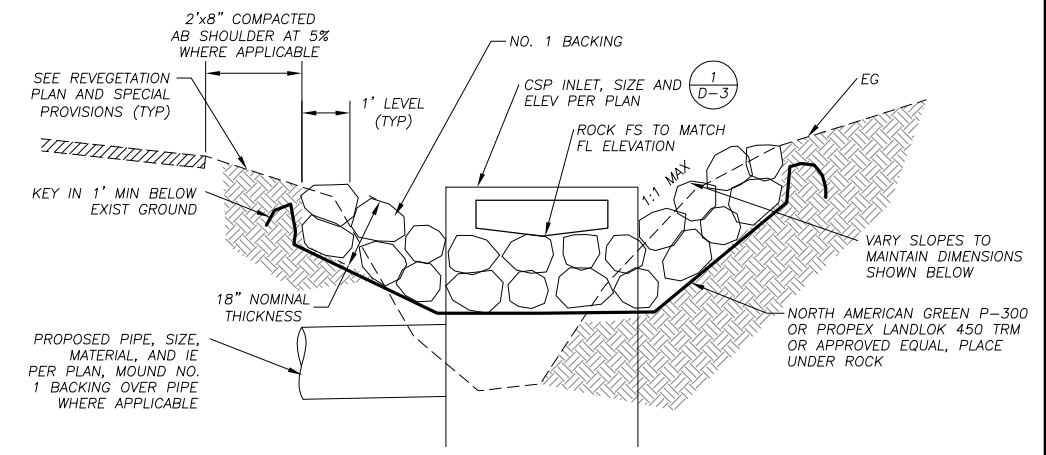


PLAN SHEET	STATIONING	LF	TOP WIDTH, W	DEPTH, D	SLOPE RATIO, R
P-1	25+88.81 TO 25+73.68	15	4.58'	0.90'	2:1
P-1	MV 25+64.93 TO BR 19+31.86	48	4.58'	0.90'	2:1
P-1	19+43.06 TO 19+65.50	24	4.58'	0.90'	2:1
P-2	31+20.52 TO 31+43.51	39	4.58'	0.90'	2:1

NOTES:
1. "D" DEPICTS MIN REQUIRED DEPTH OF CHANNEL. FINISHED TOP WIDTH AND SIDE SLOPE HEIGHT MAY VARY DEPENDING ON EXISTING TERRAIN AND THE NEED TO MAINTAIN A 2' SHOULDER AT ROADWAYS. SEE PLANS AND CROSS-SECTION SHEETS FOR GRADING LIMITS.
2. DIMENSIONS SPECIFIED ARE TO BE MEASURED FROM TOP OF RECP.
3. SEE SPECIAL PROVISIONS FOR OVEREXCAVATION, TOPSOIL MIX, AND COMPACTION REQUIREMENTS.

BLANKET-LINED CHANNEL (BLC)

2
D-1



ROCK BOWL

5
D-1

REVISION	NUMBER	DATE	DESCRIPTION	BY



PREPARED UNDER THE SUPERVISION OF:
[Signature]
REGISTERED CIVIL ENGINEER
DATE: 06/12/17

DESIGNED: DMG
DRAWN: DMG
CHECKED: DWK
DATE: 4/2017
ROAD NUMBER: ---

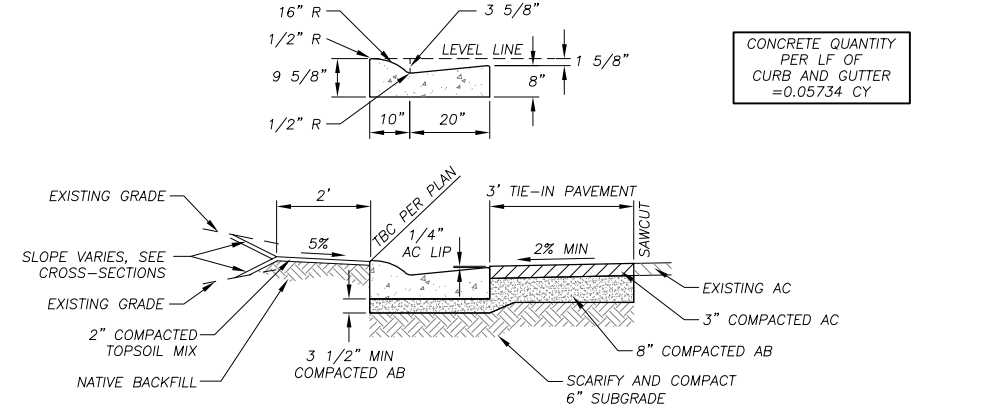
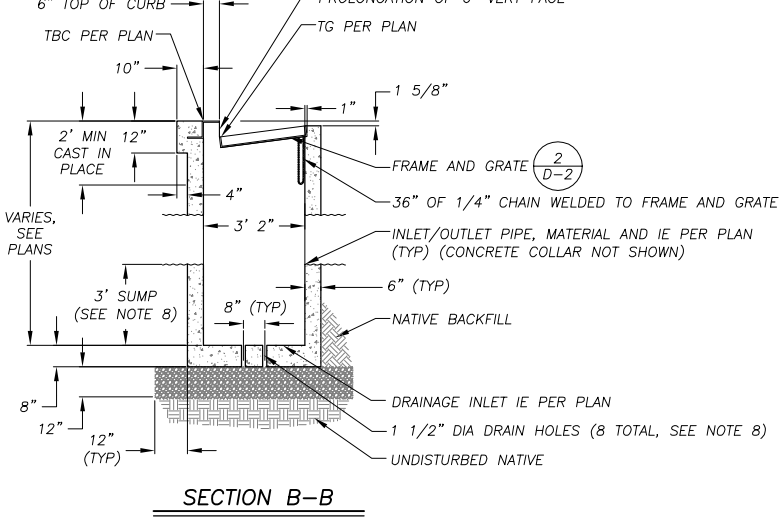
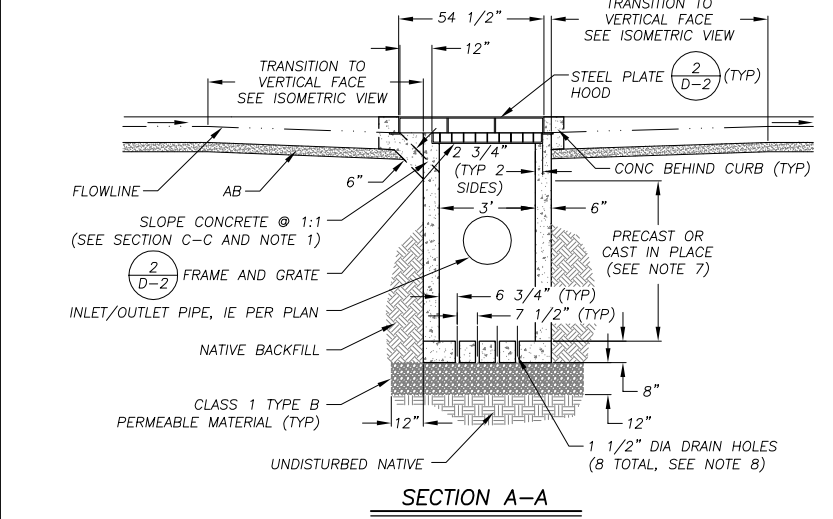
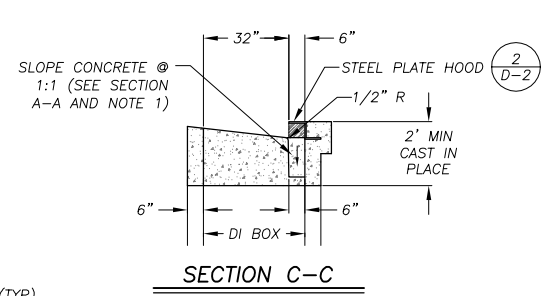
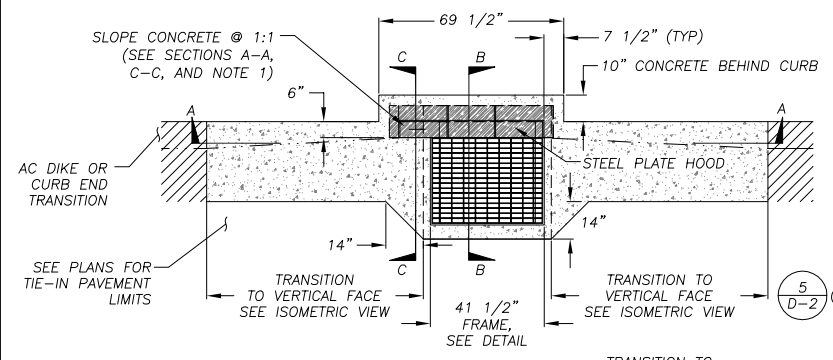


COUNTY OF EL DORADO
COMMUNITY DEVELOPMENT SERVICES
TRANSPORTATION DEPARTMENT

COUNTRY CLUB HEIGHTS EROSION CONTROL PROJECT
PHASE I
DETAIL SHEET

SHEET D-1
12 OF 19
CONTRACT NO. PW 17-3116
CIP No. 95191

Drawing name: \NCD\bas\51\T-SL-Engineering\CIVIL 3D PROJECTS\95191\Engineering\NPL\AN\13-15 CCH D-1 D-3.dwg
 ORIGINAL SCALE IS IN INCHES
 FOR REDUCED PLANS



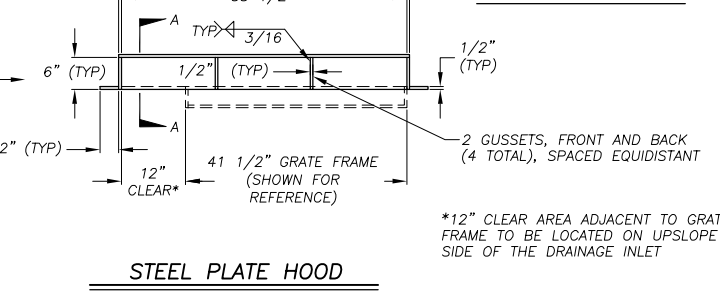
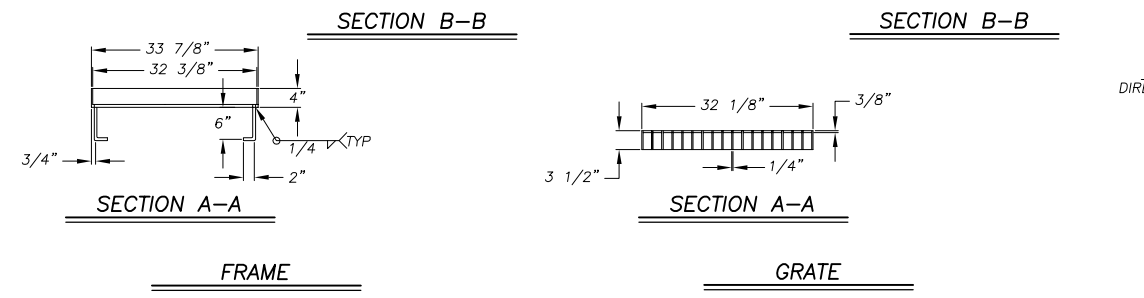
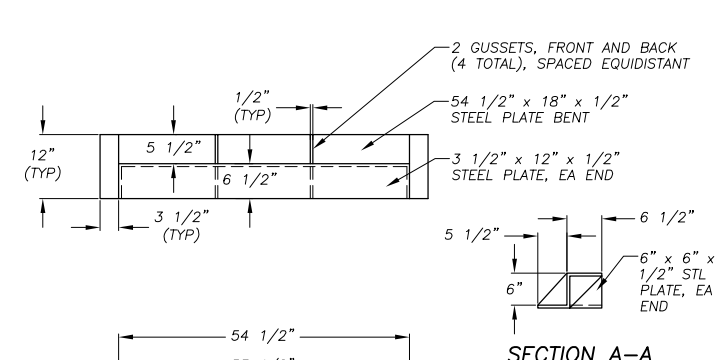
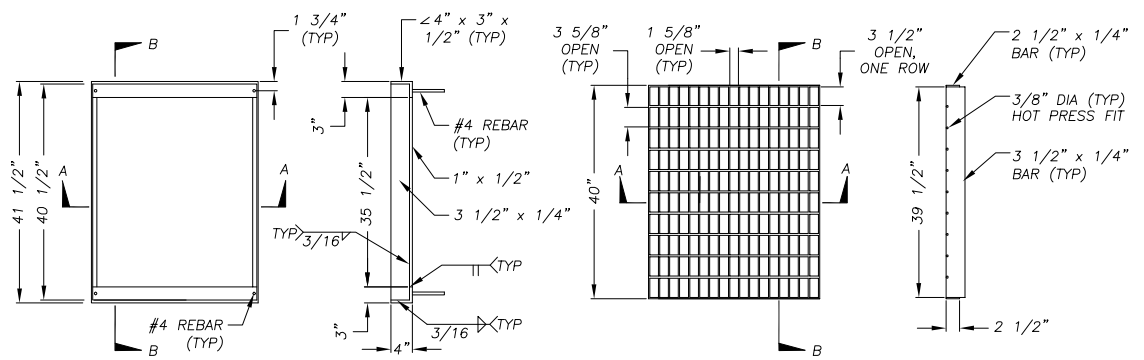
NOTE:
 WHERE R&R CURB: DRILL, DOWEL, AND EPOXY 3-#4 x 18" BARS INTO EXISTING CURB AND GUTTER, SEE CURB END TRANSITION DETAIL.

ROLLED CURB AND GUTTER WITH TIE IN PAVEMENT

3
D-2

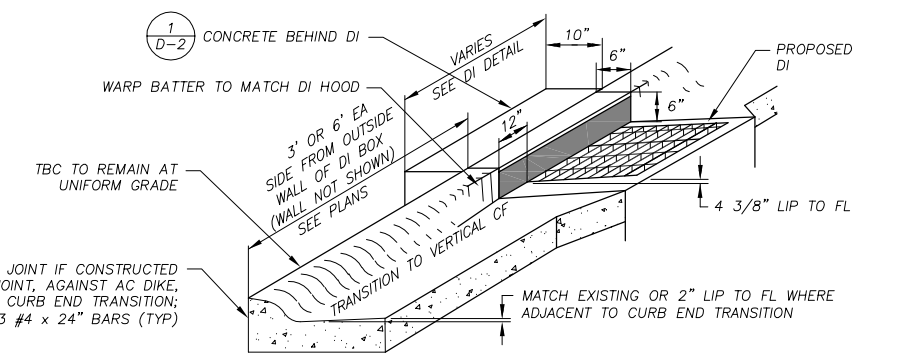
TYPE 2 DRAINAGE INLET

1
D-2



DRAINAGE INLET, FRAME, GRATE, AND HOOD

2
D-2



NOTES:
 1. WHERE R&R CURB: DRILL, DOWEL, AND EPOXY 3-#4 x 18" BARS INTO EXISTING CURB AND GUTTER.
 2. SEE DRAINAGE INLET DETAIL FOR DIMENSIONS OF CONCRETE AROUND GRATE AND FRAME.

DI CURB TRANSITION

4
D-2

REVISION	NUMBER	DATE	DESCRIPTION	BY



PREPARED UNDER THE SUPERVISION OF:
 [Signature]
 REGISTERED CIVIL ENGINEER
 DATE: 06/12/17

DESIGNED: DMG
 DRAWN: DMG
 CHECKED: DWK
 DATE: 4/2017
 ROAD NUMBER: ---

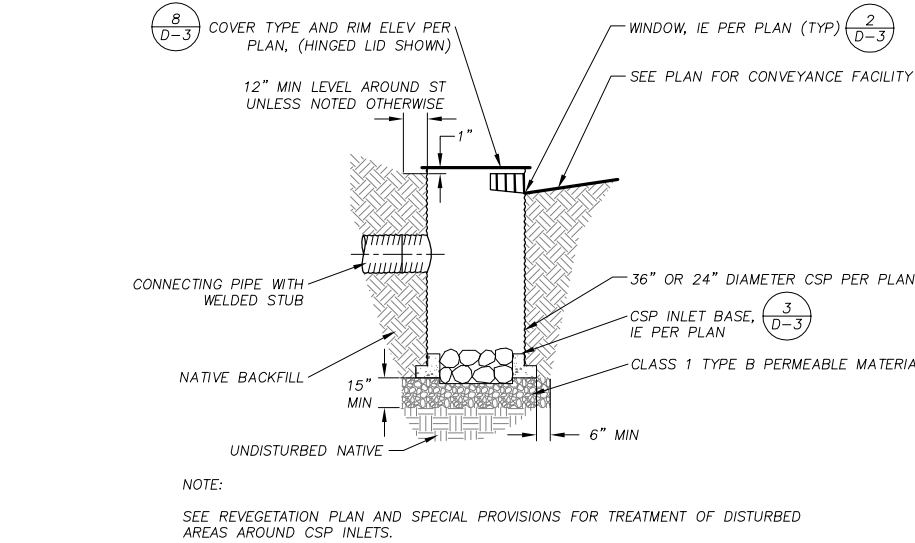
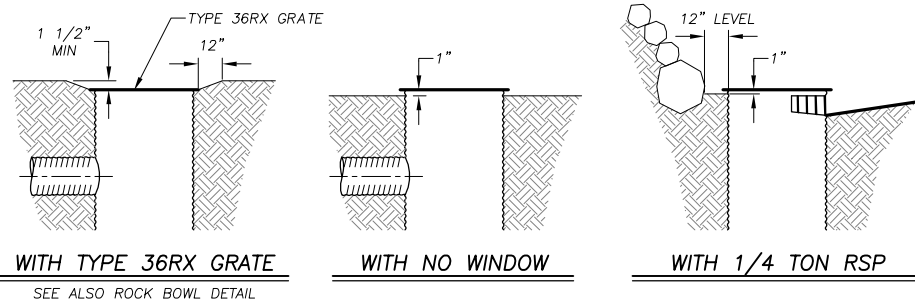


COUNTY OF EL DORADO
 COMMUNITY DEVELOPMENT SERVICES
 TRANSPORTATION DEPARTMENT

COUNTRY CLUB HEIGHTS EROSION CONTROL PROJECT
 PHASE I
 DETAIL SHEET

SHEET
D-2
 13 OF 19
 CONTRACT NO.
PW 17-3116
 CIP No.
95191

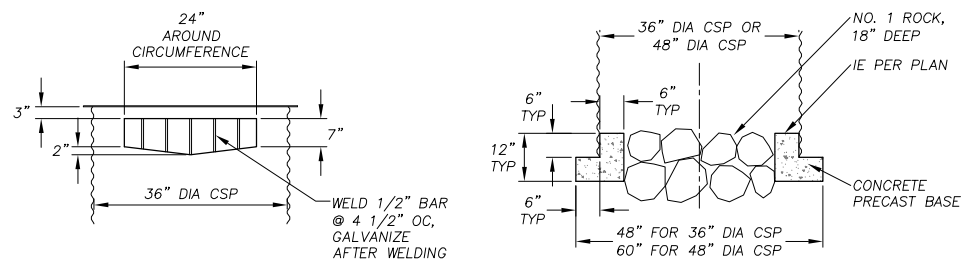
Drawing name: N:\Data\5151\SLT-Engineering\CIVIL 3D PROJECTS\95191\Engineering\WRL_AW13-15 CCH D-1 D-3.dwg
 ORIGINAL SCALE IS IN INCHES
 FOR REDUCED PLANS
 REVISION



CSP INLET

NTS

1
D-3



CSP INLET WINDOW

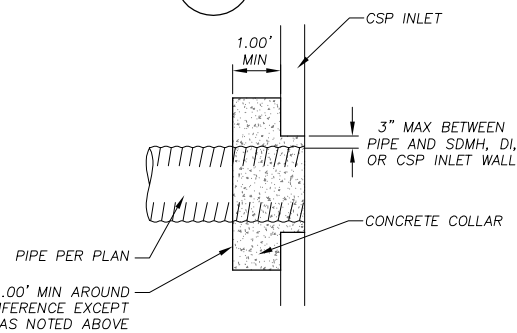
NTS

2
D-3

CSP INLET BASE

NTS

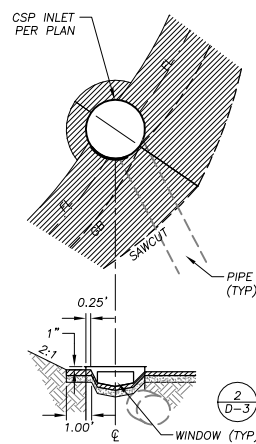
3
D-3



CONCRETE COLLAR

NTS

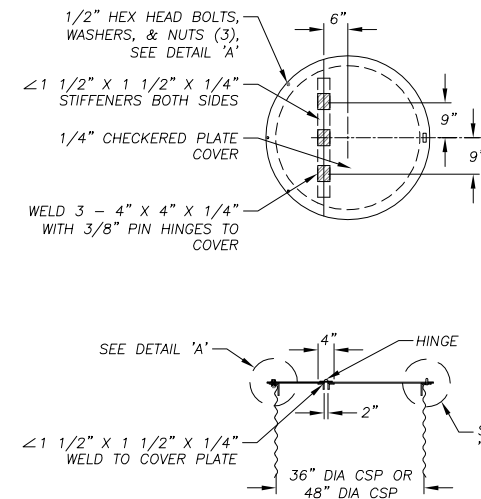
4
D-3



AC SWALE AT CSP INLET WINDOWS

NTS

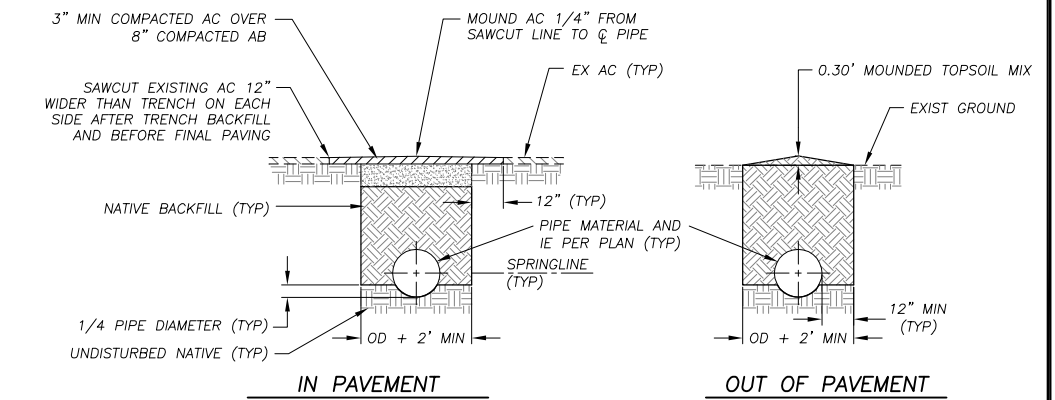
5
D-3



HINGED LID

NTS

8
D-3



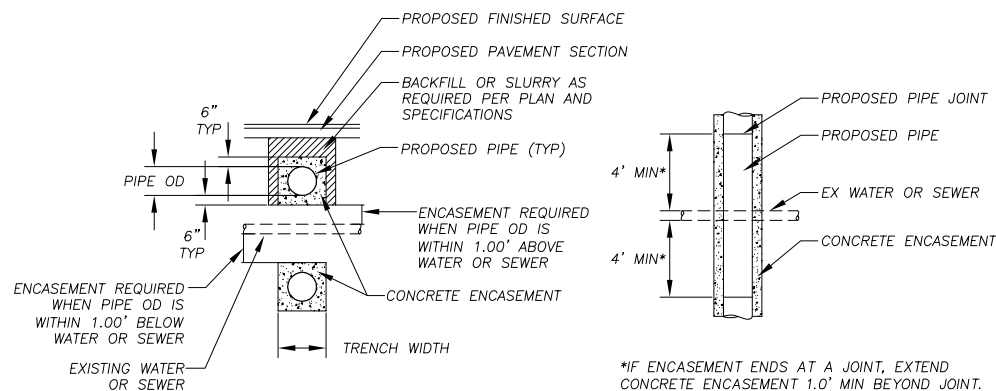
IN PAVEMENT

OUT OF PAVEMENT

NOT USED

NTS

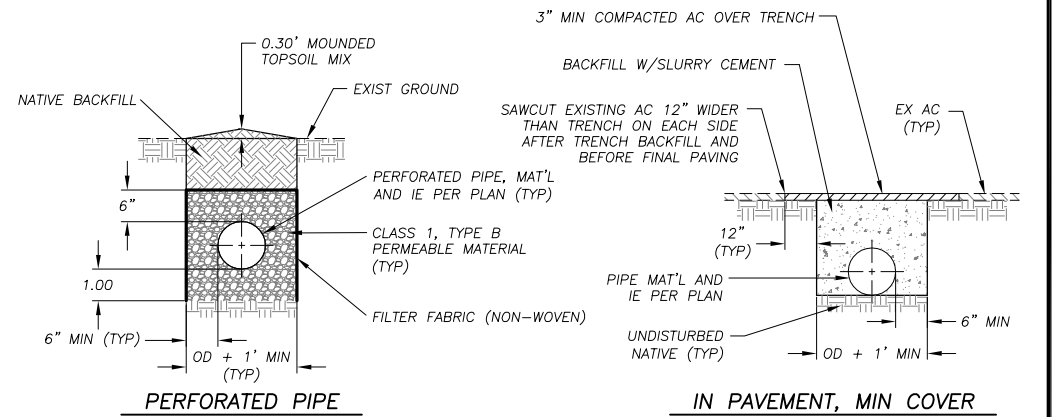
6
D-3



CONCRETE ENCASEMENT

NTS

7
D-3



PERFORATED PIPE

IN PAVEMENT, MIN COVER

NOTES:

- SEE SPECIAL PROVISIONS FOR LOCATIONS WHERE PIPE TRENCH BACKFILL SHALL BE SLURRY CEMENT.
- FOR REMOVAL OF EXISTING PIPE IN PAVEMENT: PRIOR TO PAVING, SAWCUT THE EXISTING AC PAVEMENT 12\"/>

PIPE TRENCH

NTS

9
D-3



PREPARED UNDER THE SUPERVISION OF:

 REGISTERED CIVIL ENGINEER
 DATE: 06/12/17

DESIGNED: DMG
 DRAWN: DMG
 CHECKED: DWK
 DATE: 4/2017
 ROAD NUMBER: ---



COUNTY OF EL DORADO
 COMMUNITY DEVELOPMENT SERVICES
 TRANSPORTATION DEPARTMENT

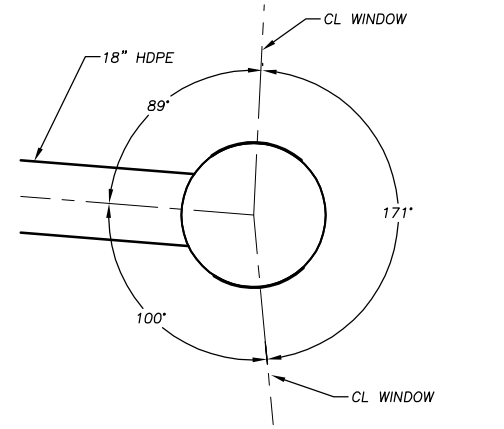
COUNTRY CLUB HEIGHTS EROSION CONTROL PROJECT
 PHASE I
 DETAIL SHEET

SHEET
D-3
 14 OF 19
 CONTRACT NO.
PW 17-3116
 CIP No.
95191

Drawing name: \\C:\Data\51151\SLT-Engineering\CIVIL_3D_PROJECTS\95191\Engineering\WRL\AN17 CH HC-1.dwg

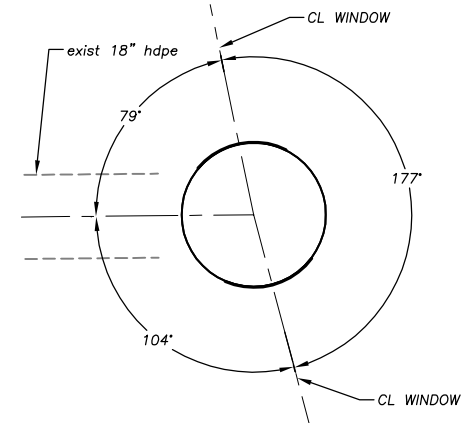
ORIGINAL SCALE IS IN INCHES

FOR REDUCED PLANS



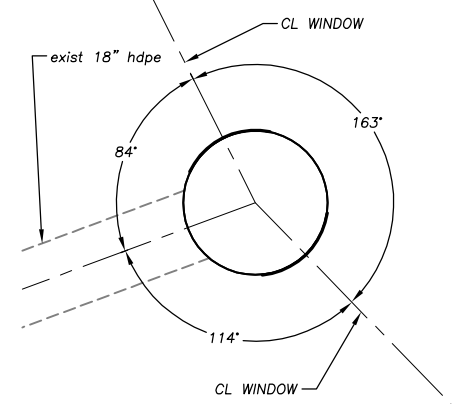
**36"Ø CSP INLET
AT EC 25+97.60 (SHEET P-2)**

NTS



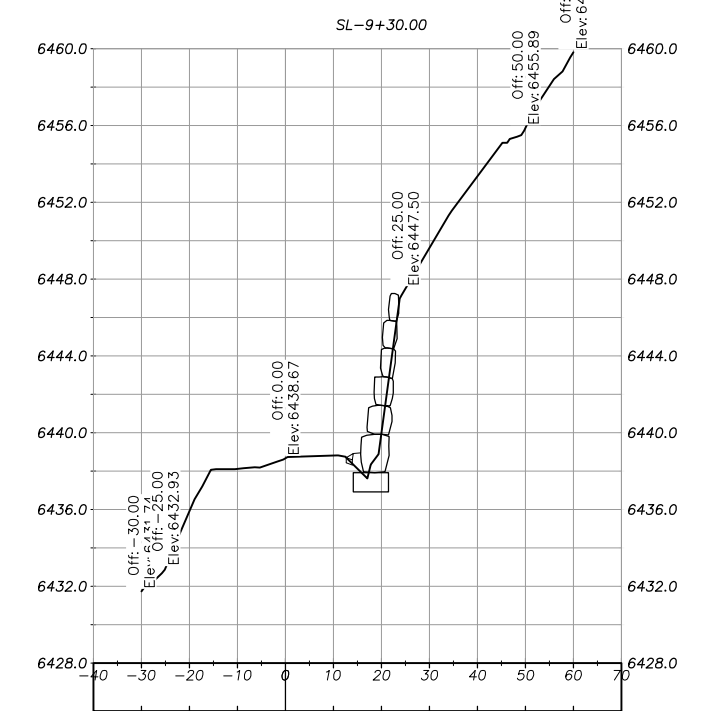
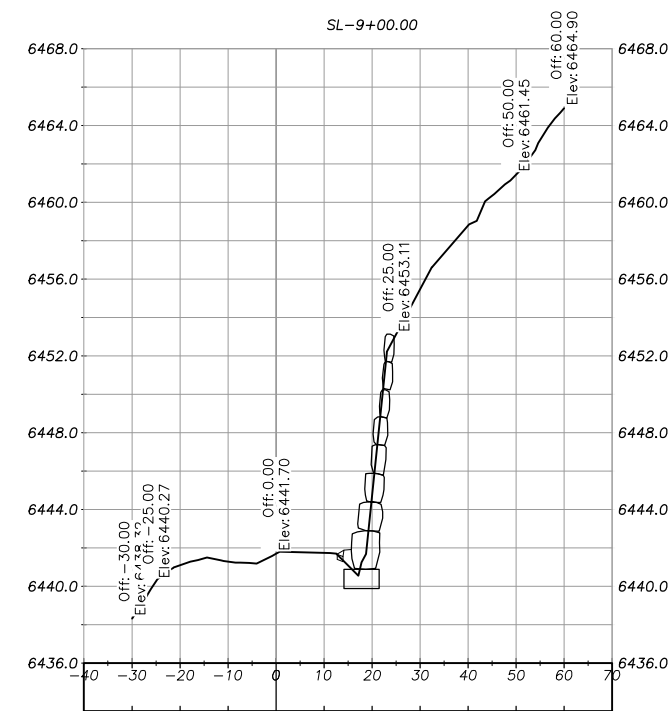
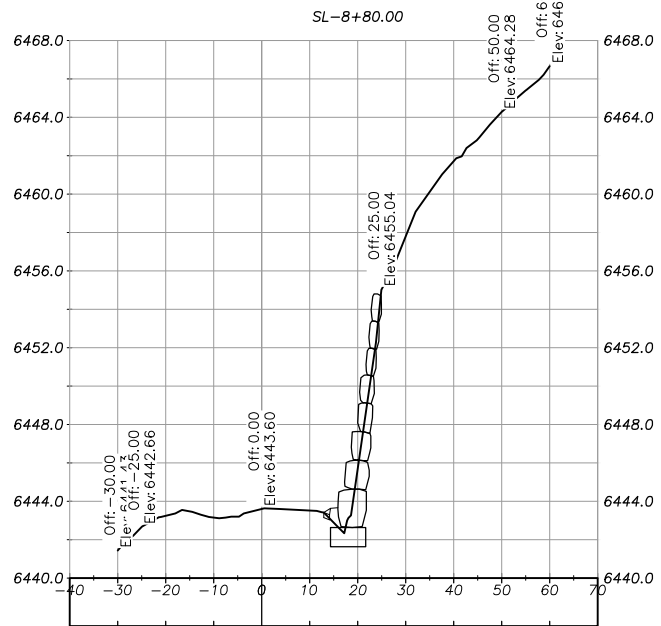
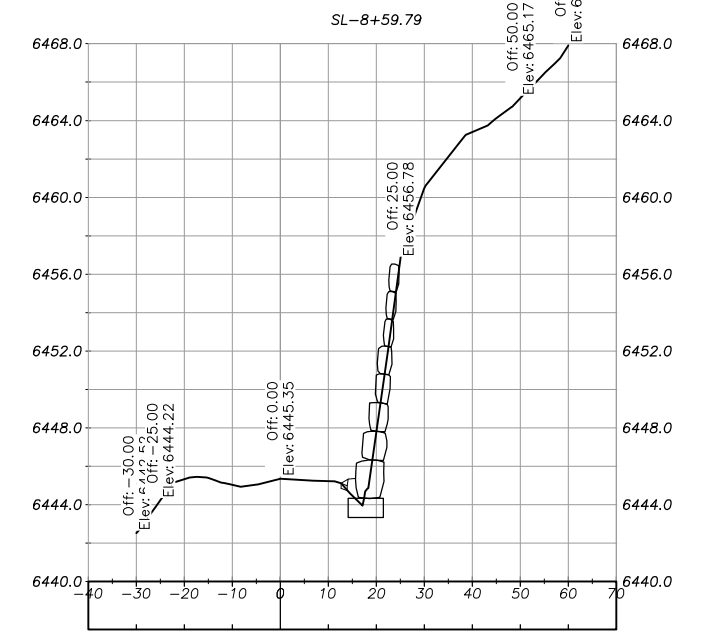
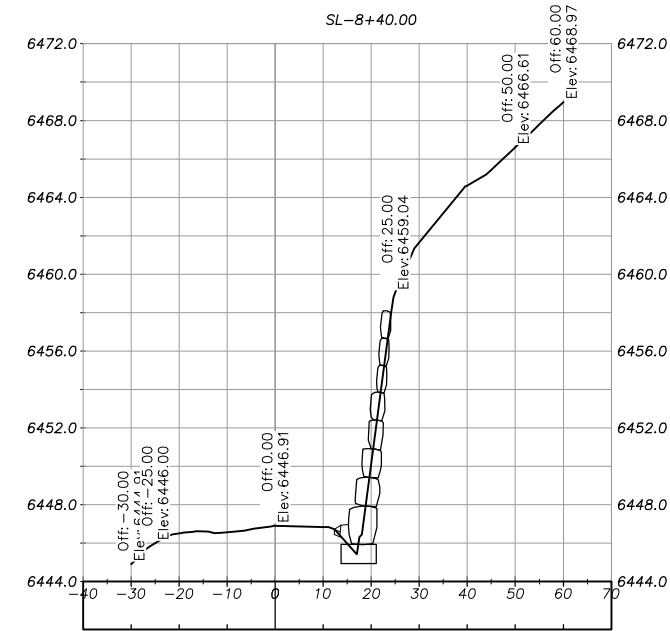
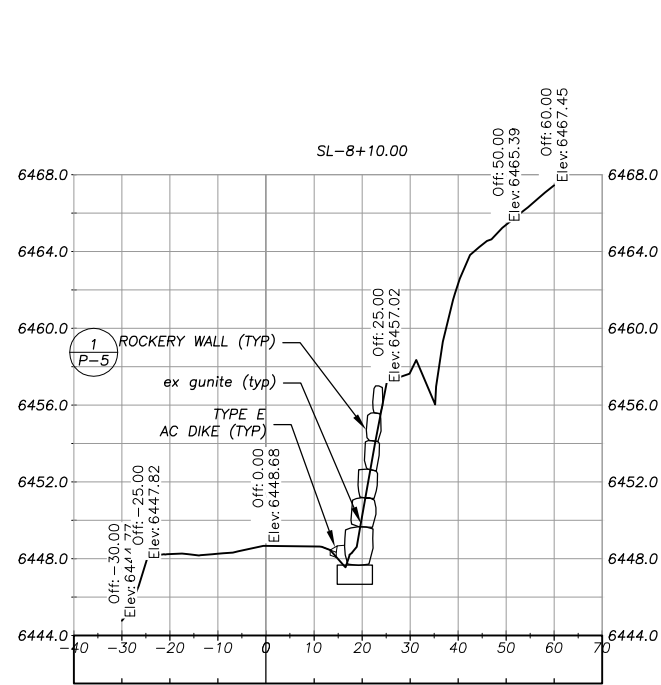
**36"Ø CSP INLET
AT EC 28+94.35 (SHEET P-2)**

NTS



**36"Ø CSP INLET
AT EC 31+94.83 (SHEET P-2)**

NTS



MEADOW VALE X-SECTIONS

REVISION	NUMBER	DATE	DESCRIPTION	BY



PREPARED UNDER THE SUPERVISION OF:

 REGISTERED CIVIL ENGINEER
 DATE: 06/12/17

DESIGNED: DMG
 DRAWN: DMG
 CHECKED: DWK
 DATE: 4/2017
 ROAD NUMBER: ---



COUNTY OF EL DORADO
 COMMUNITY DEVELOPMENT SERVICES
 TRANSPORTATION DEPARTMENT

COUNTRY CLUB HEIGHTS EROSION CONTROL PROJECT
 PHASE I
 HORIZONTAL CONTROL / MEADOWVALE X-SECTIONS

SHEET
HC-1
 15 OF 19
 CONTRACT NO.
PW 17-3116
 CIP No.
95191

LEGEND

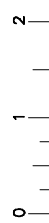
	COUNTY OR CALTRANS RIGHTS-OF-WAY OR PROPERTY LINE		EXISTING EDGE OF PAVEMENT		LAND CAPABILITY BOUNDARY		10' SEZ SETBACK (IF APPLICABLE)		PROPOSED STAGING, STORAGE, OR CONC WASH		WOODEN TREE TRUNK PROTECTION		ESA - ESA - TEMPORARY FENCE (TYPE ESA)		RSF - RSF - REINFORCED SILT FENCE		SEDIMENT CONTROL		PROPOSED CSP INLET/RISER, DI, OR SDMH		PROPOSED PIPE		PROPOSED ROCK DISSIPATOR OR RSP		PROPOSED RLC		PROPOSED BLC
--	---	--	---------------------------	--	--------------------------	--	---------------------------------	--	---	--	------------------------------	--	--	--	-----------------------------------	--	------------------	--	---------------------------------------	--	---------------	--	---------------------------------	--	--------------	--	--------------

NOTE:
THIS PROJECT IS LOCATED IN AN ENVIRONMENTALLY SENSITIVE AREA. YOU MUST EXERCISE UTMOST CARE TO PROTECT AND MAINTAIN EXISTING VEGETATION AND MINIMIZE SOIL COMPACTION WITHIN CONSTRUCTION AREAS.



Drawing name: \CD\04045\TD-SIT-Engineering\Civil_3D_PROJECTS\17-0353\Engineering\Map\17-0353-1.dwg

FOR REDUCED PLANS ORIGINAL SCALE IS IN INCHES



SCALE: 1" = 200'

REVISION	NUMBER	DATE	DESCRIPTION	BY



PREPARED UNDER THE SUPERVISION OF:

 REGISTERED CIVIL ENGINEER
 DATE: 06/12/17

DESIGNED: DMG
 DRAWN: DMG
 CHECKED: DWK
 DATE: 4/2017
 ROAD NUMBER: ---

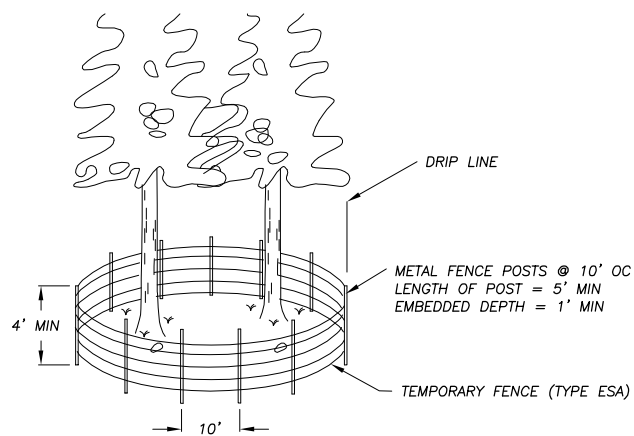


COUNTY OF EL DORADO
 COMMUNITY DEVELOPMENT SERVICES
 TRANSPORTATION DEPARTMENT

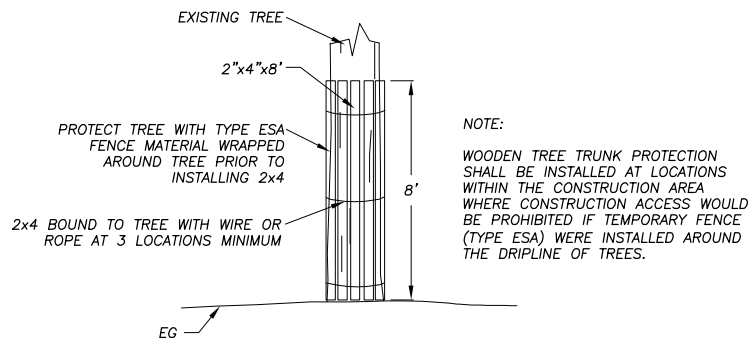
COUNTRY CLUB HEIGHTS EROSION CONTROL PROJECT
 PHASE I
 TEMPORARY EROSION CONTROL

SHEET
EC-1
 16 OF 19
 CONTRACT NO.
PW 17-3116
 CIP No.
95191

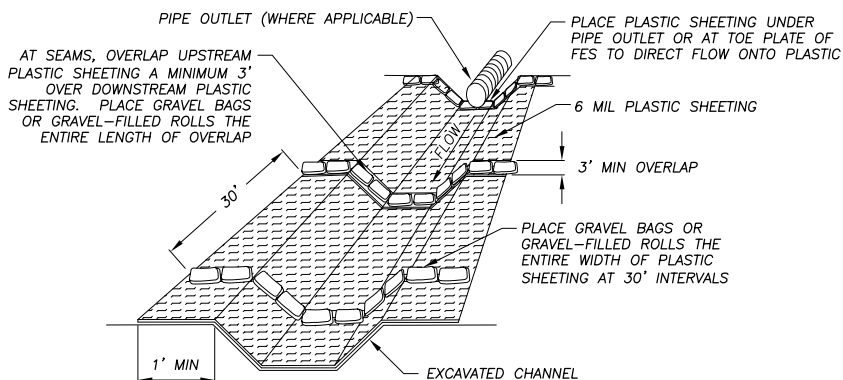
Drawing name: \C:\Data\as5\17-SLT-Engineering\CIVIL 3D PROJECTS\95191\Engineering\WPL\AN19 CCH EC-2.dwg
 ORIGINAL SCALE IS IN INCHES
 FOR REDUCED PLANS



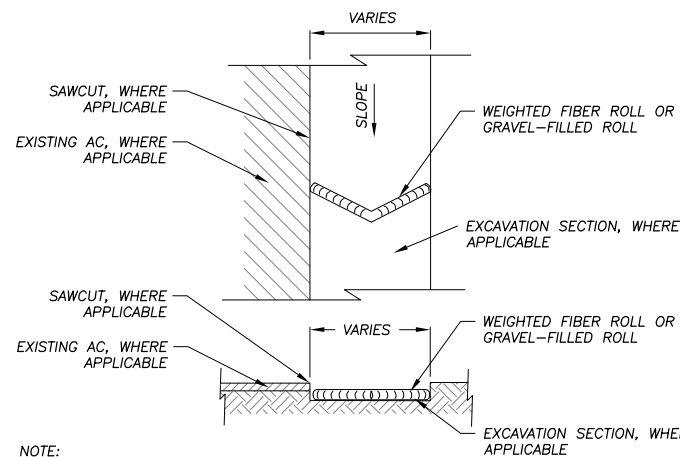
TEMPORARY FENCE (TYPE ESA) AT DRIPLINES 1
NTS EC-2



WOODEN TREE TRUNK PROTECTION 2
NTS EC-2

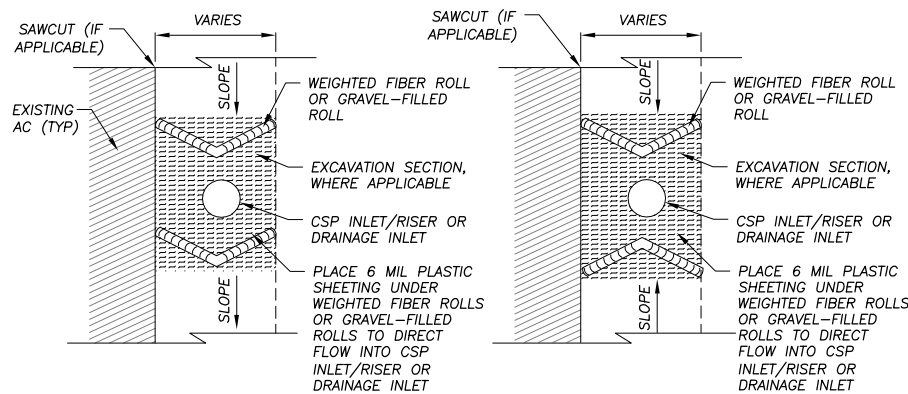


PLASTIC SHEETING WITH GRAVEL BAGS OR GRAVEL-FILLED ROLLS 3
NTS EC-2



NOTE:
SPACING INTERVALS FOR WEIGHTED FIBER ROLL OR GRAVEL-FILLED ROLL TEMPORARY SEDIMENT CONTROL ON GRADE SHALL BE AT 50' OC FOR SLOPES GREATER THAN 5% AND AT 100' OC FOR SLOPES LESS THAN OR EQUAL TO 5%.

WEIGHTED FIBER ROLLS OR GRAVEL-FILLED ROLLS 4
NTS EC-2



NOTE:
SEE ALSO TYPE 2 OR TYPE 3A, CALTRANS STD PLANS T61 AND T62.

DRAIN INLET PROTECTION 5
NTS EC-2

NOT USED 6
NTS EC-2

- GENERAL NOTES:
- LOCATIONS AND LF OF TEMPORARY REINFORCED SILT FENCE REQUIRED FOR THE STAGING AREAS ARE NOT SHOWN. YOU ARE TO INCLUDE THESE AREAS IN YOUR TEMPORARY EROSION CONTROL PLAN SUBMITTAL.
 - LENGTHS OF TEMPORARY REINFORCED SILT FENCE AND TEMPORARY FENCE (TYPE ESA) DOES NOT INCLUDE MINIMUM LIMITS FOR TREE PROTECTION. TREE PROTECTION FENCING IS TO BE AS SHOWN AND/OR AS DETERMINED IN THE FIELD.

REVISION	NUMBER	DATE	DESCRIPTION	BY



PREPARED UNDER THE SUPERVISION OF:

 REGISTERED CIVIL ENGINEER
 DATE: 06/12/17

DESIGNED: DMG
 DRAWN: DMG
 CHECKED: DWK
 DATE: 4/2017
 ROAD NUMBER: ---



COUNTY OF EL DORADO
 COMMUNITY DEVELOPMENT SERVICES
 TRANSPORTATION DEPARTMENT

COUNTRY CLUB HEIGHTS EROSION CONTROL PROJECT
 PHASE I
 TEMPORARY EROSION CONTROL

SHEET
EC-2
 17 OF 19
 CONTRACT NO.
PW 17-3116
 CIP No.
95191

SYMBOL LEGEND

- ||||| REVEGETATION AREA (TYPES 1-6)
- ~~~~~ REVEGETATION AREA (TYPE 7)
- ▭ STAGING AND STORAGE AREAS

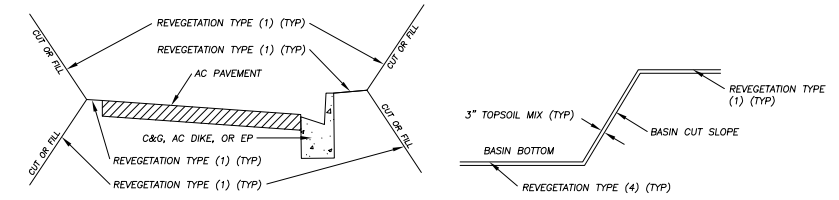
DEFINITIONS

BLANKET = ROLLED EROSION CONTROL PRODUCT (RECP)

REVEGETATION WORK LEGEND

- TYPE (1) - CONTRACTOR TO PLACE 2" COMPACTED TOPSOIL MIX, CALIFORNIA CONSERVATION CORPS (CCC) TO ADD SEED AND SOIL AMENDMENT, CONTRACTOR TO APPLY 1" MULCH, CONTRACTOR TO APPLY TACKIFIER.
- TYPE (2) - N/A.
- TYPE (3) - N/A.
- TYPE (4) - CONTRACTOR TO PLACE 3" COMPACTED TOPSOIL MIX IN CHANNEL BOTTOM AND ON CHANNEL SLOPES, CCC TO PLACE SEED, CONTRACTOR TO PLACE BLANKET ON CHANNEL BOTTOM AND CHANNEL SIDE SLOPES, CONTRACTOR TO APPLY TACKIFIER.
- TYPE (5) - N/A.
- TYPE (6) - N/A.
- TYPE (7) - STAGING AND STORAGE AREAS OFF PAVEMENT: CCC TO APPLY 2" MINIMUM THICKNESS OF WOOD CHIP/PINE NEEDLE MULCH.

NOTE:
THIS PROJECT IS LOCATED IN AN ENVIRONMENTALLY SENSITIVE AREA. YOU MUST EXERCISE UTMOST CARE TO PROTECT AND MAINTAIN EXISTING VEGETATION AND MINIMIZE SOIL COMPACTION WITHIN CONSTRUCTION AREAS.



TYPICAL ROADWAY & BASIN REVEGETATION

NTS

NOTES

1. REVEGETATION TYPE (1) FOR AREAS ADJACENT TO CURB AND GUTTER, AC DIKE, AC SWALE, ROAD SHOULDERING, PIPE INSTALLATION, DISTURBED AREAS ADJACENT TO IMPROVEMENTS, AND GRADE TO DRAIN LOCATIONS, UNLESS NOTED OTHERWISE.
2. REVEGETATION TYPE (4) IS ASSOCIATED WITH THE BLANKET-LINED CHANNEL AND THE SLOPES ABOVE THE BLANKET-LINED CHANNEL.
3. AMENDMENT AND MULCH WILL NOT BE APPLIED TO AREAS WITHIN CHANNELS.
4. ALL REVEGETATION AREAS DESCRIBED ABOVE WILL BE IRRIGATED WITH A WATER TRUCK BY THE COUNTY FOR TWO YEARS FOLLOWING INSTALLATION TO ENSURE OPTIMUM PLANT SURVIVAL.
5. SEE SPECIAL PROVISIONS FOR LOCATIONS WHERE SCARIFYING IS REQUIRED PRIOR TO REVEGETATION TREATMENT.



SCALE: 1" = 200'

Drawing name: \\C:\Data\TD-SI-Engineering\Civil_3D\PROJECTS\95191\Engineering\MP\PLAN 20 CCH R-1.dwg

FOR REDUCED PLANS ORIGINAL SCALE IS IN INCHES

REVISION	NUMBER	DATE	DESCRIPTION	BY



PREPARED UNDER THE SUPERVISION OF:

 REGISTERED CIVIL ENGINEER
 DATE: 06/12/17

DESIGNED: DMG
 DRAWN: DMG
 CHECKED: DWK
 DATE: 4/2017
 ROAD NUMBER: ---



COUNTY OF EL DORADO
 COMMUNITY DEVELOPMENT SERVICES
 TRANSPORTATION DEPARTMENT

COUNTRY CLUB HEIGHTS EROSION CONTROL PROJECT
 PHASE I
 REVEGETATIVE PLAN

SHEET R-1
 18 OF 19
 CONTRACT NO. PW 17-3116
 CIP No. 95191

Drawing name: \\SDA\datatp\td-sit-Engineering\Civil_3D_PROJECTS\95191\Engineering\MP\AA\21_C04_TC-1.dwg
 ORIGINAL SCALE IS IN INCHES
 2
 1
 0
 FOR REDUCED PLANS
 REVISION



LEGEND

- PROPOSED STAGING AREA WITH SF
- APPROXIMATE SIGN LOCATION
- G20-2 "END ROAD WORK" SIGN
- W20-1 "ROAD WORK AHEAD" SIGN
- W20-4 "ONE LANE ROAD XXX FT" SIGN
- W3-4 "BE PREPARED TO STOP" SIGN

NOTES:

1. THIS PLAN HAS BEEN PREPARED AS A GUIDE FOR YOU IN PREPARATION OF A COMPLETE TRAFFIC CONTROL PLAN AND TO AID IN YOUR PLANNING FOR STAGING/STORAGE OF MATERIALS AND EQUIPMENT. YOUR TRAFFIC CONTROL PLAN WILL INCLUDE DETAILED CONTROLS INCLUDING FLAGGERS, LANE CLOSURES, AND SIGNS FOR ALL ITEMS OF ROAD WORK WHICH WILL REQUIRE ALTERATION OF EXISTING TRAFFIC PATTERNS. THE LEGEND SHOWS THE LIST OF SIGNS TO BE REQUIRED AS A MINIMUM.
2. YOUR TRAFFIC CONTROL PLAN WILL ADDRESS EACH PHASE OF CONSTRUCTION (e.g. PIPE PLACEMENT, STRUCTURES ADJACENT TO AND/OR AFFECTING THE ROADWAY, ETC.) AND WILL CONFORM TO PART 6 OF THE CALIFORNIA MUTCD ENTITLED "TEMPORARY TRAFFIC CONTROL" AND THE SPECIAL PROVISIONS. YOUR TRAFFIC CONTROL PLAN WILL ALSO INCLUDE ALL SIGNING REQUIRED AT INTERSECTING STREETS WITHIN THE AREA THAT WILL REQUIRE TRAFFIC CONTROL.
3. SINGLE LANE CLOSURES WILL BE ALLOWED FOR THE INSTALLATION OF THE ROCK SLOPE PROTECTION, CSP INLETS, CHANNELS, R&R AC DRIVEWAY, AC DIKE, AC SWALE, AND PIPE (VARIOUS LOCATIONS). AT ALL OTHER TIMES, TWO LANES OF TRAFFIC WILL BE MAINTAINED.
4. AT THE END OF EACH WORK DAY A MINIMUM OF TWO 10 FOOT LANES WILL BE OPENED TO PUBLIC TRAFFIC. NO LANE CLOSURE WILL PREVENT RESIDENTS FROM ACCESS TO THEIR PROPERTY.
5. WHEN LANE CLOSURES ARE REMOVED AND ROADS ARE OPEN TO PUBLIC TRAFFIC, ALL DRIVEWAYS WITHIN THE WORK AREA WILL BE ACCESSIBLE AND OPERATIONAL.
6. YOU WILL NOT EXCAVATE MORE THAN CAN BE INSTALLED AND BACKFILLED IN ONE WORKING DAY.
7. YOUR TRAFFIC CONTROL PLAN WILL INCLUDE SIGNAGE ON PINE STREET FOR TRAFFIC CONTROL RELATED TO TRUCKS ENTERING THE ROADWAY FROM THE PROJECT AREA.
8. YOUR ATTENTION IS DIRECTED TO THE SWPPP, TEMPORARY EROSION CONTROL SHEETS, REVEGETATION PLAN SHEET, AND THE SPECIAL PROVISIONS REGARDING TEMPORARY EROSION CONTROL REQUIREMENTS FOR STAGING AREAS.
9. STAGING AREAS SHOWN ARE FOR THE TEMPORARY STORAGE OF CONSTRUCTION MATERIALS AND EQUIPMENT WHICH ARE TO BE USED ON THIS PROJECT.

NUMBER	DATE	DESCRIPTION	BY



PREPARED UNDER THE SUPERVISION OF:

 REGISTERED CIVIL ENGINEER
 DATE: 06/12/17

DESIGNED: DMG
 DRAWN: DMG
 CHECKED: DWK
 DATE: 4/2017
 ROAD NUMBER: ---



COUNTY OF EL DORADO
COMMUNITY DEVELOPMENT SERVICES
TRANSPORTATION DEPARTMENT

COUNTRY CLUB HEIGHTS EROSION CONTROL PROJECT
PHASE I
TRAFFIC CONTROL PLAN

SHEET
TC-1
 19 OF 19
 CONTRACT NO.
PW 17-3116
 CIP No.
95191