

RECEIVED
BOARD OF SUPERVISORS
EL DORADO COUNTY
9:52 am, Mar 09, 2012

El Dorado County Parks and Trails Master Plan

El Dorado County
Board of Supervisors
March 13, 2012



 FOOTHILL ASSOCIATES



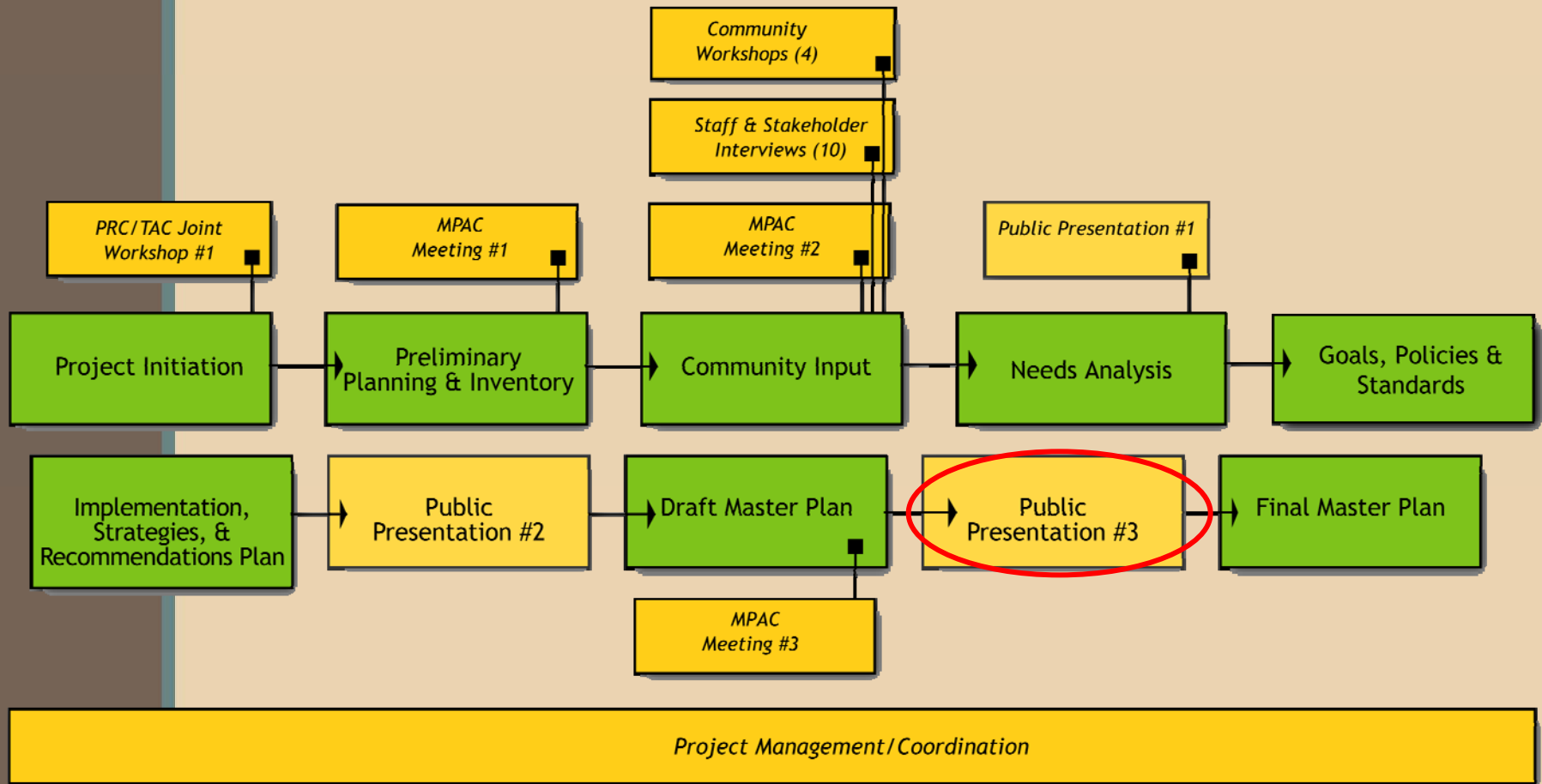
Overview

- Project Approach
- Planning Context
- Parks and Trails Vision
- Implementation Elements
 - Level of Service Standards
 - Feasibility Considerations
 - Design Standards
 - Recommendations
 - Development Review Process
 - Funding Approach
- Next Steps



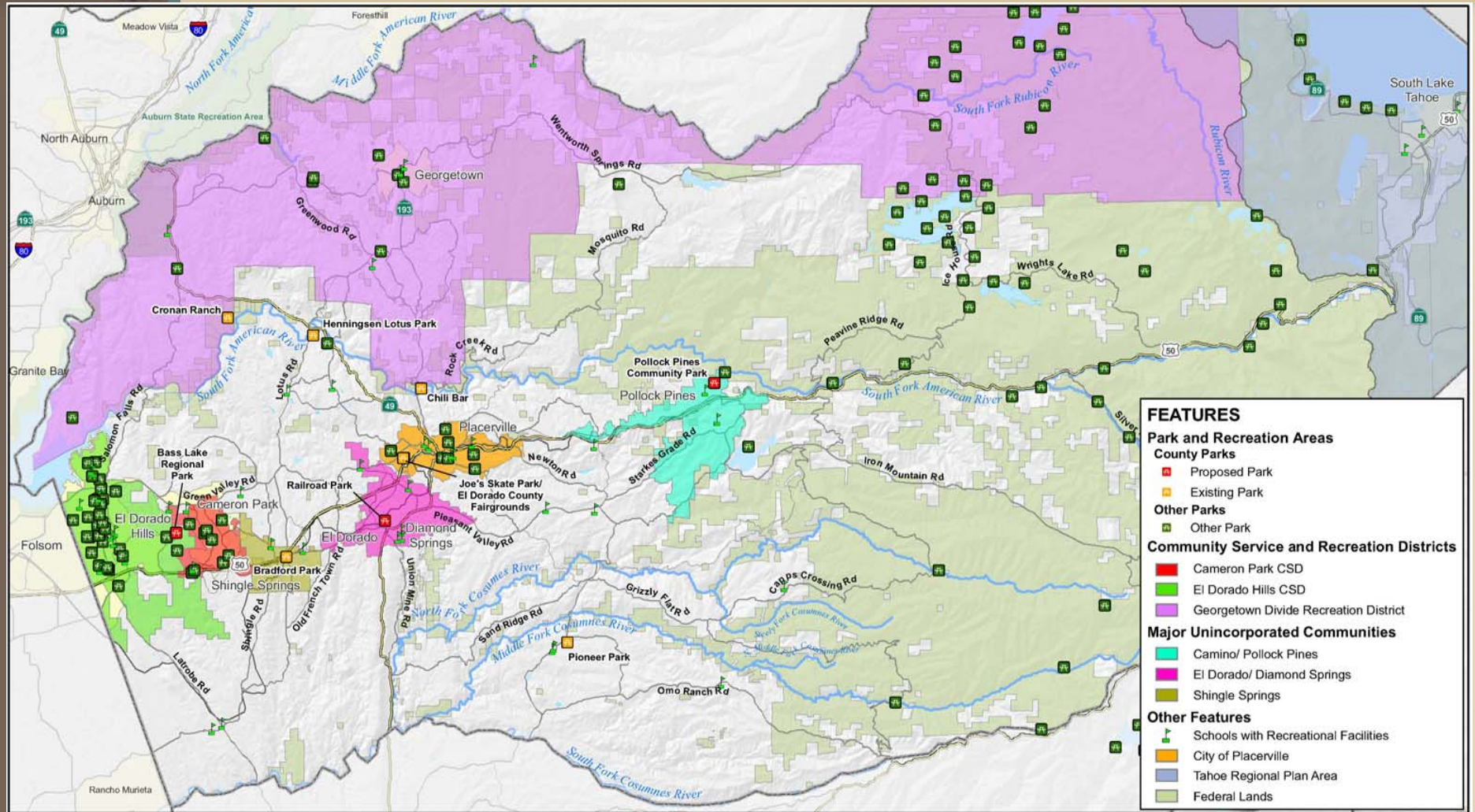


Project Approach





Planning Context





Planning Context

El Dorado County General Plan

Eldorado National Forest ↔
Bureau of Land Management

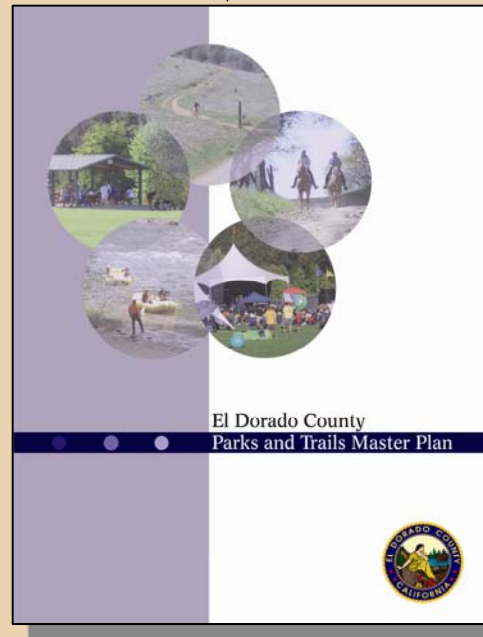
- SFAR Management Plan
- Cronan Ranch Management Plan

National Park Service ↔
National Historic Trails

- California NHT
- Pony Express NHT

CA State Parks ↔

- Auburn SRA
- Folsom SRA
- Marshall Gold Discovery SRA
- Recreational Trails Plan



El Dorado County River Management Plan

El Dorado County Bicycle

Transportation Plan

SPTC Master Plan

City of Placerville

Special Districts

- El Dorado Hills
- Cameron Park
- Georgetown Divide
- Rolling Hills
- Etc.



Parks and Trails Vision

Parks and Trails in El Dorado County will facilitate:

- ✓ Health and wellness of individuals and communities
- ✓ Places for community gathering and events
- ✓ Enhanced sense of place and local identity
- ✓ Protection for El Dorado County's unique natural and cultural resources
- ✓ Economic development associated with recreation based tourism and quality of life



Existing Level of Service

Plan Area Population: 71,603	General Plan Park Acreage Per 1,000 Guidelines			
	Neighborhood Parks (2.0 ac)	Community Parks (1.5 ac)	Regional Parks (1.5 ac)	All Parks (5 ac)
Acres for Area Served only by El Dorado County	143	107	107	358
Developed Park Land				
Henningsen Lotus		51		51
Pioneer Park		21		21
Bradford Park	3			3
Joe's Skate Park		1		1
Chili Bar (lower)			9	9
El Dorado County Fairgrounds			48	48
<i>Subtotal:</i>	3	73	57	133
Undeveloped Park Land				
Chili Bar (upper)			7	7
Cronan Ranch Regional Trails Park			62	62
Pollock Pines Community Park		26		26
Bass Lake Park			40	40
Railroad Park			6	6
<i>Subtotal:</i>	0	26	115	141
All Park Land				
Total Existing Acres	3	99	172	274
Total Surplus/(Deficit)	(140)	(8)	65	(84)



Expanded Level of Service

Guidelines are provided for:

- ✓ Park Classifications
- ✓ Trail Classifications
- ✓ Park Service Area
- ✓ Acres per 1,000 Population
- ✓ Facilities per 1,000 Population
- ✓ Non-vehicular Access
- ✓ Park Site Characteristics
- ✓ Standard Park Improvements



Expanded Level of Service

Park Classifications

- Neighborhood, Community, Regional and Linear Parks

Trail Classifications

- Nature Trails, Park Paths, Connectors

Park Service Area

- Neighborhood ½ mile, Community 5 miles

Acres per 1,000 Population

- Neighborhood 2 acres, Community 1.5 acres, Regional 1.5 acres



Expanded Level of Service

Facilities per 1,000 Population

- Needs for most types of facilities are not met

Non-vehicular Access

- All new neighborhood parks on Class I bike path or Class II bike route w/sidewalk

Park Site Characteristics

- Land dedicated for active use parks must be suitable

Standard Park Improvements

- Consistent quality of park resources in all communities



Facilities Level of Service

✓ Play Area	1/3,000 people with at least 1 per park
✓ Tennis Court	1/6,000 people
✓ Outdoor Basketball Court	1/6,000 people
✓ Baseball Field (lighted)	1/25,000 people
✓ Softball Field	1/7,000 people
✓ Little League Baseball Field	1/7,000 people
✓ Soccer or Multi-use Field	1/6,000 people
✓ Equestrian Arena	1/20,000 people
✓ Swimming Pool	1/45,000 people
✓ Gym/Multipurpose Room	1/20,000 people
✓ Meeting/Event Space	1/15,000 people
✓ Community Center	1/30,000 people
✓ Group Picnic Area (covered)	1/8,000 people
✓ Skateboard Park	1/45,000 people
✓ Disc Golf Course	1/45,000 people
✓ Amphitheater	1/45,000 people
✓ Dog Park	1/ 50,000 people



Design Standards

Parks

- Facilities
- Design Process
- Location
- Parking and Circulation
- Sustainability



Trails

- Parking and Trailheads
- Signs
- Location
- Sustainability
- Trail Design Details





Park Recommendations

- Neighborhood Parks
 - 4 parks in Diamond Springs, El Dorado
 - 1 park in Shingle Springs
 - Joint-use with schools
 - Land dedication for new development
 - CSDs and/or assessment districts
 - Standards for neighborhood parks
 - Access to neighborhood parks by walking or biking
 - Coordinate school and park locations





Park Recommendations

- Community Parks
 - Camino/Pollock Pines Community Park
 - Identify Phase 1 project (low cost, high use)
 - Partner with EID for facilities at Forebay Reservoir
 - Explore alternatives/need for non-Phase 1 improvements
 - Henningsen Lotus Park
 - Build second pavilion
 - Expand community/local uses with GDRD
 - Develop build-out concept plan; consider facilities such as tennis courts, dog park, small gym, white water facility, etc.





Park Recommendations

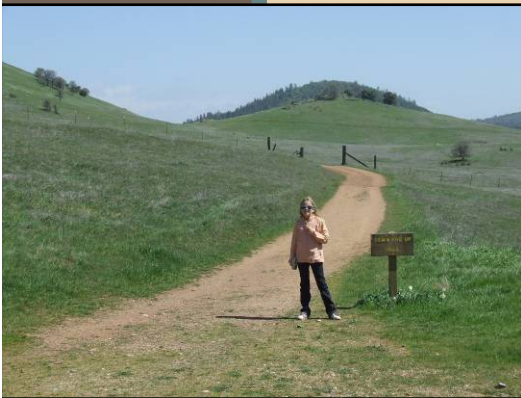
- Community Parks
 - Coordination with GDRD
 - Greenwood Community Center transfer
 - Bayley House site as regional feature
 - Coordinate on Georgetown Airport trail easements
 - Participate in grants and other efforts
 - Standards for Community Parks
 - New Community Parks
 - Land dedication for new development
 - CSDs and/or assessment districts
 - Partner with businesses and organizations





Park Recommendations

- Regional Parks
 - El Dorado County Fairgrounds
 - Possible future renovation of ball fields depending on Fairgrounds agreement and current uses
 - Chili Bar
 - Complete public input on concept/CEQA
 - Seek funding/partnerships
 - Cronan Ranch
 - Develop concept plan with public input
 - Identify funding and operational resources
 - Bass Lake Regional Park
 - Revisit 10-year old concept plan for current needs
 - Explore teaming with CSDs for improvements
 - Railroad Park
 - Develop funding/implementation strategy





Facility Recommendations

■ Facilities

- Look at schools for joint use of play areas, outdoor basketball courts, and sports fields
- Include play areas, outdoor basketball courts, sports fields and tennis courts in new/improved parks
- Complete baseball/soccer fields at Office of Education site
- Pursue public/private partnerships for sports fields
- Equestrian arena in north county





Facility Recommendations

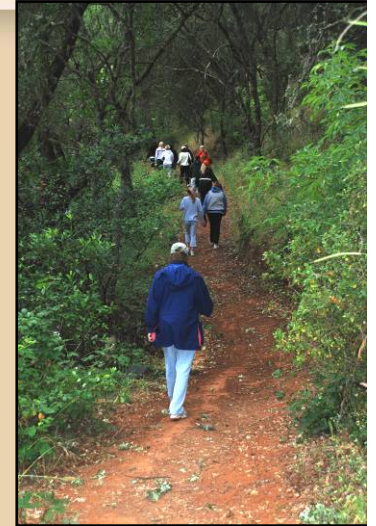
- Facilities
 - Placerville Aquatic facility expansion of hours
 - Explore underutilized space for gym/multipurpose use
 - Include group picnic areas in new/improved parks
 - Skateboard park in north county
 - Disc golf course in north county
 - Amphitheater at Pollock Pines
 - Dog Park





Trail Recommendations

- El Dorado Trail
 - SPTC Sacramento to Placerville
 - Halcon Road to Pacific House
 - Pacific House to Tahoe
 - Brockliss Bridge
- Pony Express National Historic Trail
 - Comprehensive signage and promotion w/NPS
- Mormon-Carson Emigrant Trail
 - California National Historic Trail
 - Comprehensive signage and promotion w/NPS





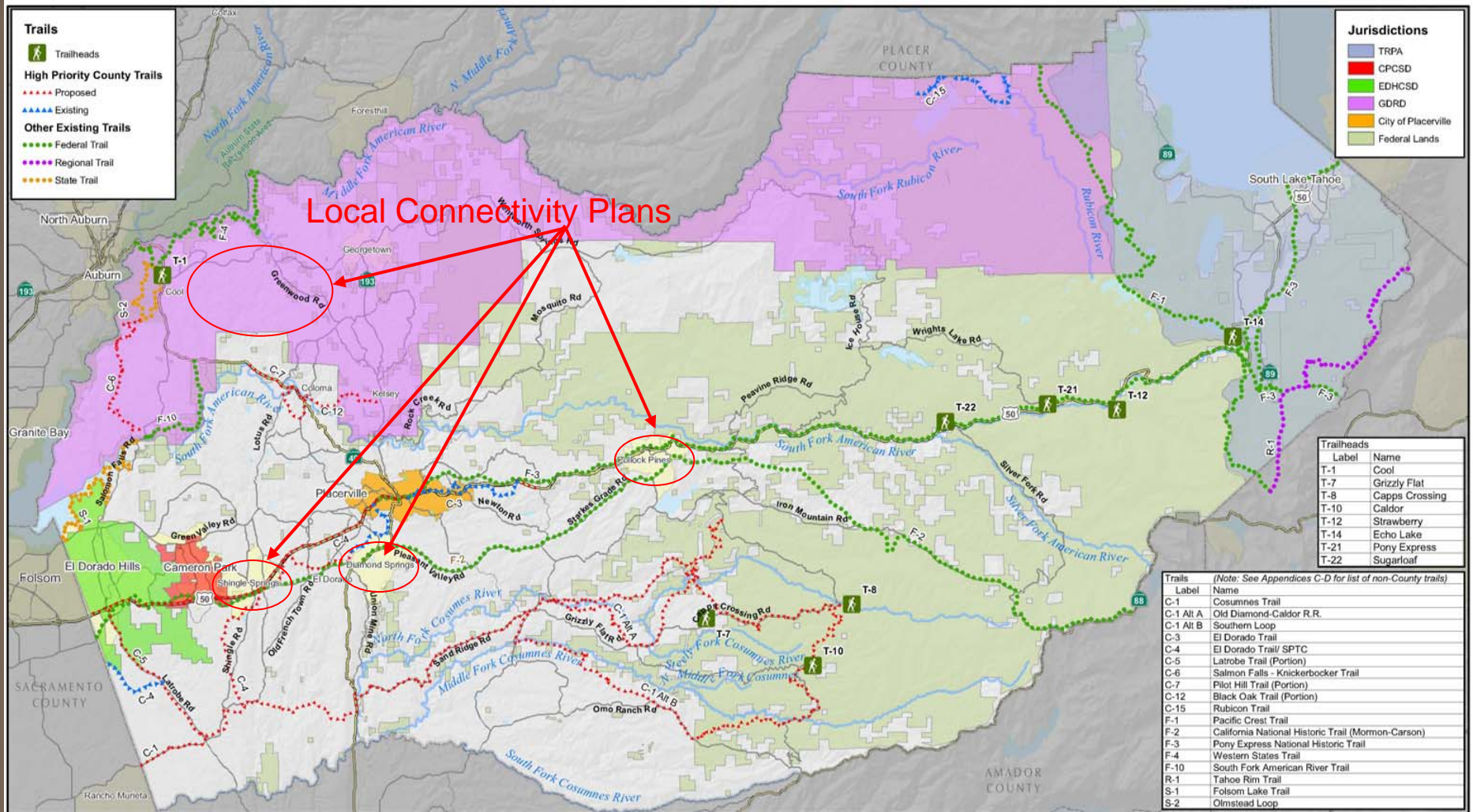
Trail Recommendations



- Neighborhood/Community Connectivity Plans
 - Georgetown Divide, Camino/Pollock Pines, Shingle Springs
 - El Dorado/Diamond Springs EDCTC project is funded
- El Dorado County Bicycle Transportation Plan
 - Implementation of Class I bike paths
 - Add tracks for equestrian use where feasible
- Other Regional Connectors
 - Cosumnes Trail as south county east-west route
 - Latrobe Trail from El Dorado Hills to SPTC
 - Salmon Falls to Olmstead Loop
 - Magnolia Trailhead to Marshall SHP including Henningsen Lotus to Monroe Ridge Trail
 - Kelsey to Coloma



Trail Recommendations





Trail Recommendations

- Trailhead Locations
 - Local access and multiple use
- Trail/Trailhead Design Standards
- Trail Signage Format Standards
 - Consistency with other trail agencies
- Trail Use Standards
 - Determined by multiuser group
- Trail User Education and Advocacy
 - Ongoing effort to promote safe use for residents and visitors





Administration Recommendations

- Funding
 - More aggressive pursuit of grants
 - Maintain Quimby land dedication/in-lieu fees
 - Park Impact Fee Nexus Study and identify alternative way to fund new parks
 - Develop business value oriented approach to sponsorships
- Operations
 - Administrative consistency between General Plan, Master Plan, Ordinances, and Design Manual
 - Professional parks/trails staffing at some minimum level to preserve existing relationships and leverage opportunities



Administration Recommendations

- Maintenance
 - Preventive maintenance
 - Planning for low maintenance
- Coordinated Information Resources
 - Web-based information from a user/visitor perspective for multiple park/trail providers
- Ordinance Enforcement and Security
- Parks and Trails Master Plan Update
- Collaboration
 - Public/private partnerships
 - Public/public partnerships
 - Park and trail promotion for geo-tourism
 - Volunteer Utilization



Feasibility Considerations

Evaluate during park/trail planning, design, and construction process:

- ✓ Consistency with General Plan, other relevant plans, and regulations
- ✓ Potential for phasing, funding or other resources
- ✓ Site suitability and project feasibility
- ✓ Sustainability of project
- ✓ Potential for cooperative partnerships
- ✓ Stakeholder support and consensus



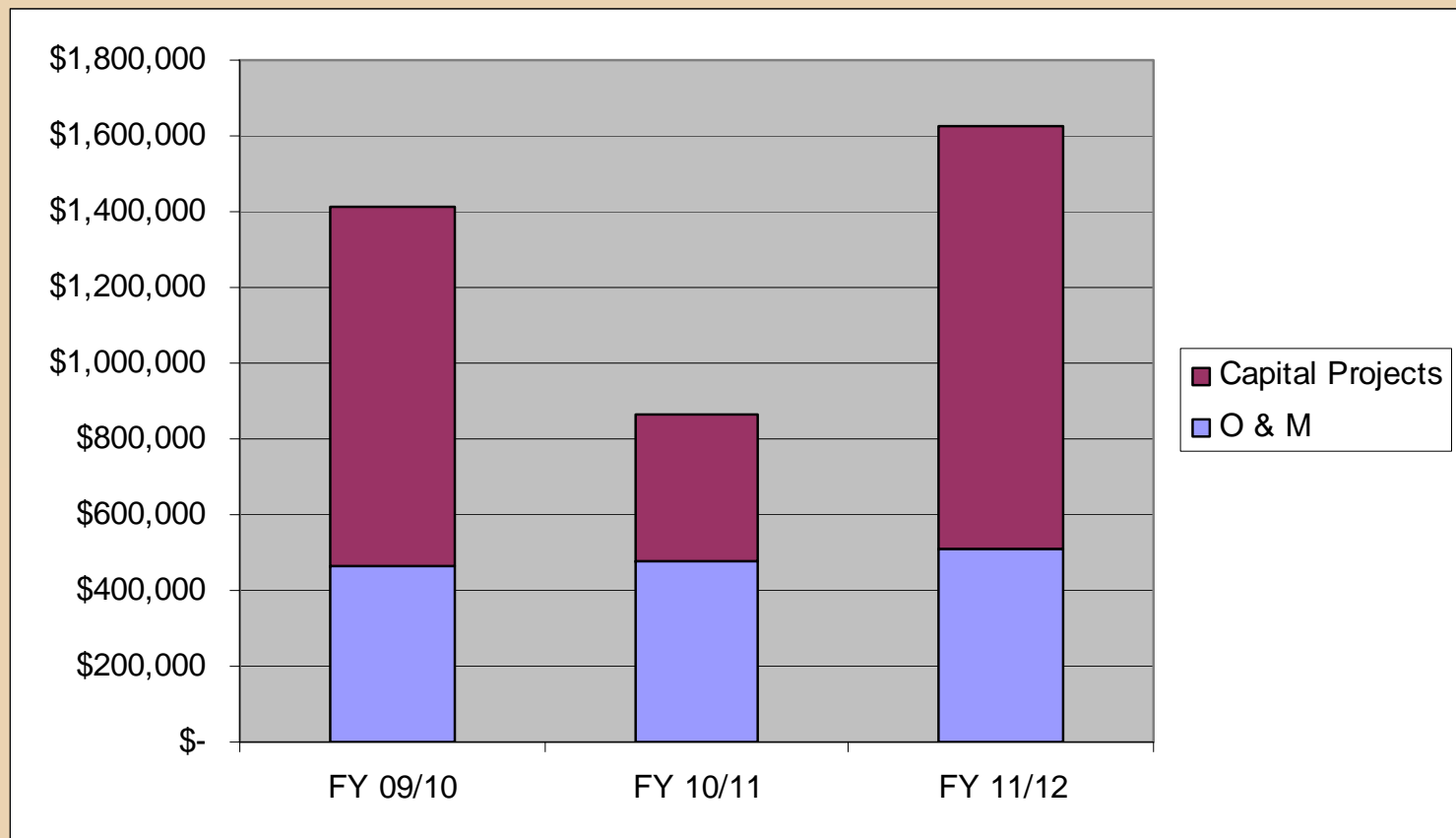
Development Review

- Land dedication or fees in-lieu to continue under Quimby Implementation Ordinance
- Land dedication site standards
- Pending Nexus Study, establish Park Impact Fee
- Require neighborhood/community trail connections
- Regional trail corridor dedication
- Turn-key facilities per Level of Service standards
- PRC Participation and Review



Funding Approach

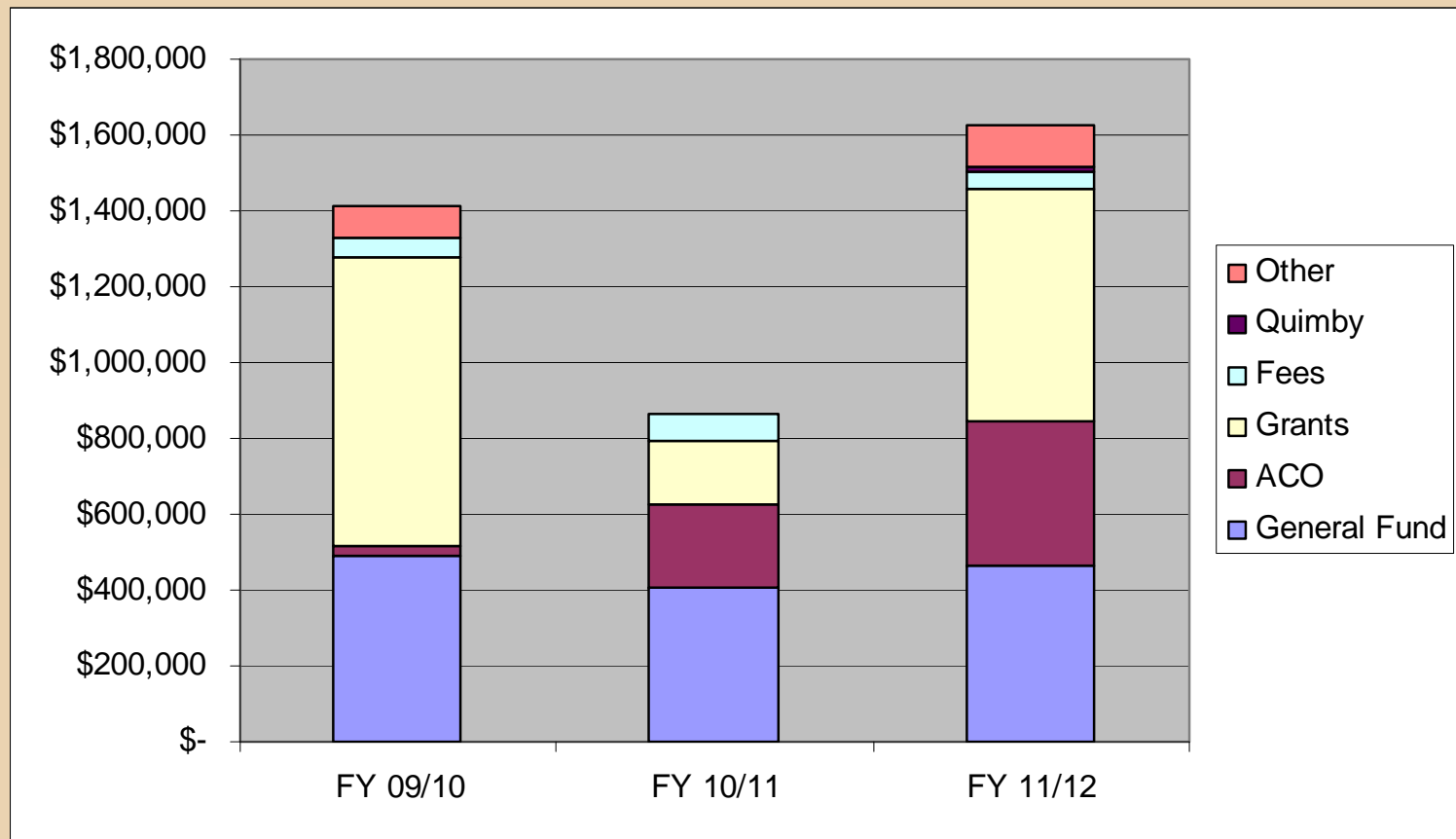
Parks and Trails Expenditures





Funding Approach

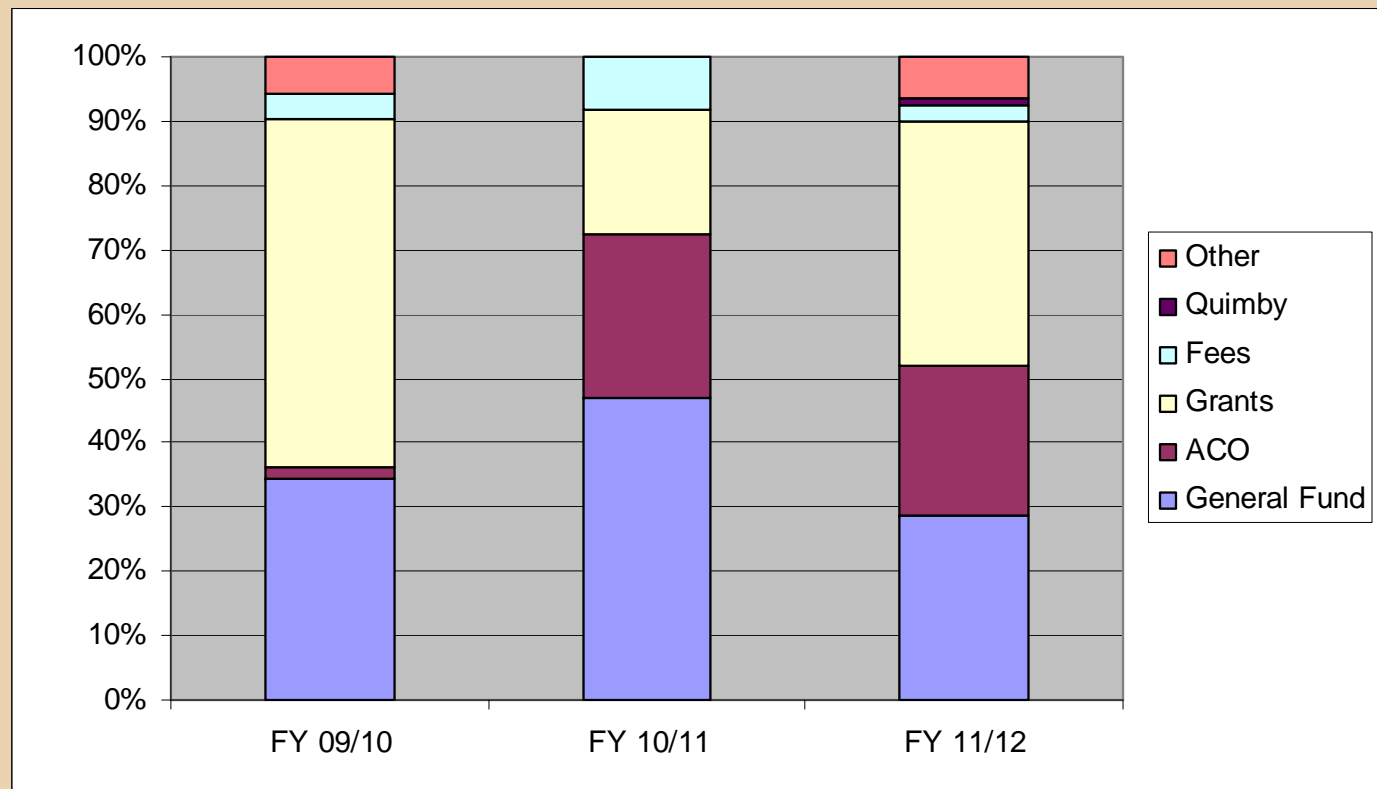
Parks and Trails Revenue Sources





Funding Approach

Parks and Trails Revenue Sources





Funding Approach

Existing Sources

- General Fund
- ACO
- Grants
- Fees, Quimby, Other

Potential New Sources

- Sponsorships from businesses or organizations
- Value based partnerships
- Volunteer labor and goods
- CSDs and/or benefit assessment districts
- Development impact fees



New Funding Priorities

PARKS	
RP3. Cronan Ranch Concept Plan and Implementation Strategy	\$ 25,000
RF3.B. Complete Fields at Office of Education	\$250,000
CP1.A. Pollock Pines Community Park: Identify Phase 1 Project	\$ 6,000
NP1.A. Neighborhood Parks - El Dorado/Diamond Springs Area: 4 parks ; Shingle Springs area: 1 park	\$9.6 million
RF11. Dog Park	\$ 25,000
TRAILS	
TR5. El Dorado County Bicycle Transportation Plan (BTP) Implementation	Per BTP
TR1.A. El Dorado Trail: Sacramento County to Placerville	Per BTP/SPTC Plan
TR1.B. El Dorado Trail: Halcon Road to Pacific House Planning (Implementation Costs TBD in Planning)	\$ 15,000
TR1.D. El Dorado Trail: Brockliss Bridge Planning (Implementation Costs TBD in Planning)	\$ 15,000
TR4.A. Georgetown Divide Neighborhood and Community Connectivity Plan	\$ 40,000
TR4.B. Camino/Pollock Pines Neighborhood and Community Connectivity Plan	\$ 40,000
TR4.C. El Dorado/Diamond Springs Neighborhood and Community Connectivity Plan	In Process
TR4.D. Shingle Springs Neighborhood and Community Connectivity Plan	\$ 40,000
ADMINISTRATION	
AD2. Park Impact Fee Nexus Study	\$ 25,000
AD5. Dedicated Staffing	\$ 120,000
AD8. Coordinated Online Information Resources	\$ 40,000
DEFERRED MAINTENANCE	
Multiple Park and Trail Projects	\$ 126,000



Next Steps

- Finalize/Adopt Master Plan and MND
- Address Parks and Trails Staffing
- Complete Tahoe Basin Plan
- Develop Staff Work Plan
 - Volunteerism
 - Funding Opportunities
 - Joint-use
 - Collaborative Initiatives