



SCHOOL LOADING ZONE SURVEY

HILLSDALE CIRCLE

(No. 1133)

1245' south from Robert J Mathews Parkway (N) (No. 1132)

Reviewed by the Traffic Advisory Committee on DEC 05 2019

COMMITTEE APPROVED STAFF'S RECOMMENDATION.

COMMITTEE REQUESTED FURTHER ACTION.

Action: APPROVED

DEPARTMENT OF TRANSPORTATION
ENGINEERING AND TRAFFIC SURVEY

Location: 1245' south from Robert J Mathews Pky (N) (No. 1132)

Subject: School Loading Zone Survey

Date: August 19, 2019

1. INTRODUCTION:

This study was initiated in response to a request by Keith Merrill on behalf of Marble Valley Academy. The parking concern was brought to the attention of The Department of Transportation on June 29, 2019. Due to vehicles parking in front of Marble Valley Academy School making mid-day school operations difficult for deliveries, parents and mail persons, and vehicles double parking to conduct school business. Marble Valley Academy is requesting 98 feet of school loading zone, to facilitate school drop-off and pick-up.

The California Vehicle Code, Section 22505 (along with CVC 22507), allows local authorities to establish Stopping, Standing or Parking Restrictions on County Roadways.

CVC Section 22505 Stopping Standing or Parking on State Highway Segments states in part:

- (a) The Department of Transportation with respect to highways under its jurisdiction may place signs or markings prohibiting or restricting the stopping, standing, or parking of vehicles....
- (1) In areas where, in its opinion, stopping, standing, or parking is dangerous to those using the highway or where the stopping, standing, or parking of vehicles would unduly interfere with the free movement of traffic thereon.
- (b) No person shall stop, park, or leave standing any vehicle in violation of the restrictions stated on the signs or markings.
- (c) This section does not apply to any of the following:
- (1) Public utility vehicles while performing a work operation.
- (2) The driver of any vehicle which is disabled in such a manner and to such an extent that it is impossible to avoid stopping, parking, or leaving the disabled vehicle standing on the roadway. Amended Ch. 455, Stats. 1987. Effective January 1, 1988.”

The California Manual on Uniform Traffic Control Devices (CAMUTCD), Section 2A.06 Design of Signs, CAMUTCD, Section 2B.46 Parking, Standing, and Stopping Signs and CAMUTCD, Section 2B.47 Design of Parking, Standing, and Stopping Signs; have relevant data for parking restrictions on State and County Roadways.

Refer to CVC 463, 587 and CVC Division 11, “Rules of the Road”, CVC 21112 through 22658 regarding the authorities for the various parking, stopping and loading signs.

All “Engineering and Traffic Surveys “performed by the El Dorado County Department of Transportation for establishing speed limits, stop controlled intersections, crosswalks, painted traffic curbs, regulatory traffic signage, and other traffic control devices, use the current publications of the California Vehicle Code, CAMUTCD, California Manual for Setting Speed Limits, applicable County Ordinance Code, and other Civil Engineering publications and California Codes pertaining to the establishment and placement of traffic control devices.

GENERAL PHYSICAL CONDITIONS:

Limits:	140 feet adjacent to 5005 Hillsdale Circle
Functional Classification:	Local Road
Length:	140 feet
Width:	46 feet
Alignment:	Straight
Surface:	Asphalt surface
Striping:	None

Hillsdale Circle is in good condition and is classified as a Local Road by the Federal Highway Administration (FHWA), as depicted by the California Road System (CRS) maps. Hillsdale Circle is a two (2) lane undivided road with an overall width of 46 feet with parking along shoulders. The area consists of all commercial businesses.

2. ADD A SCHOOL LOADING ZONE AT MARBLE VALLEY ACADEMY, EL DORADO HILLS, CA:

A review of the accident history for Hillsdale Circle revealed that there have been no accidents reported by the California Highway Patrol on Hillsdale Circle during the three (3) year period from January 1, 2016, through December 31, 2018.

The approximate Average Daily Traffic (ADT) is between 1,000 and 1,500 vehicles per day on Hillsdale Circle at the Marble Valley Academy School.

FIELD REVIEW AND OBSERVATION:

A site visit on August 8, 2019 was made by Jim Hunnicutt, Sr. Engineering Technician to observe and document parking conditions. Although school was not in session during the visit, vehicles from adjacent businesses were observed parked in front of the Marble Valley Academy school office (the proposed School Loading Zone).

Mr. Merrill mentioned that vehicles parking in front of the school are making mid-day school operations difficult for deliveries, parents and mail persons. Also, during school drop-off, and pick-up, parents double park on Hillsdale Circle making this an unsafe condition for parents and children.

Hillsdale Circle has been found to have the following:

- Overall road width of 46 feet.
- Roadway is straight.
- Approximately 1,000-1,500 ADT.
- There were zero (0) accidents reported along this portion of Hillsdale Circle for the three (3) year period from January, 2016, through December, 2018.

CONTACTS:

Keith Merrill – Marble Valley Academy

From the “Field Review and Observations” above, the Department of Transportation has determined to place a total of three (3) ‘SCHOOL LOADING ZONE’ R25D (CA) signs in front of 5005 Hillsdale Circle, Marble Valley Academy, for public safety.

The following measures are recommended by the Department of Transportation, to help mitigate public safety, congested parking, double parking for drop-off, mid-day pick up, and end of day pick-up concern, which is the following:


- The placement three (3) ‘SCHOOL LOADING ZONE’ (R25D (CA)) signs with yellow curb (15 min).
- Place 40 feet total of red curb at either end of the Loading Zone, to retain corner sight distance exiting the school’s parking lot encroachment.

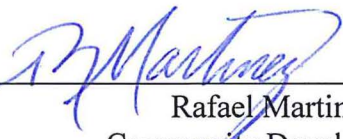
RECOMMENDATIONS:

1. That the Traffic Advisory Committee approves the request for the installation of three (3) “School Loading Zone” signs (R25 (D), 5 min) and yellow curb on Hillsdale Circle in front of Marble Valley Academy.
2. The County of El Dorado Board of Supervisors is requested to adopt the following Resolution to sanction the Loading Zone on Hillsdale Circle:

ADD:

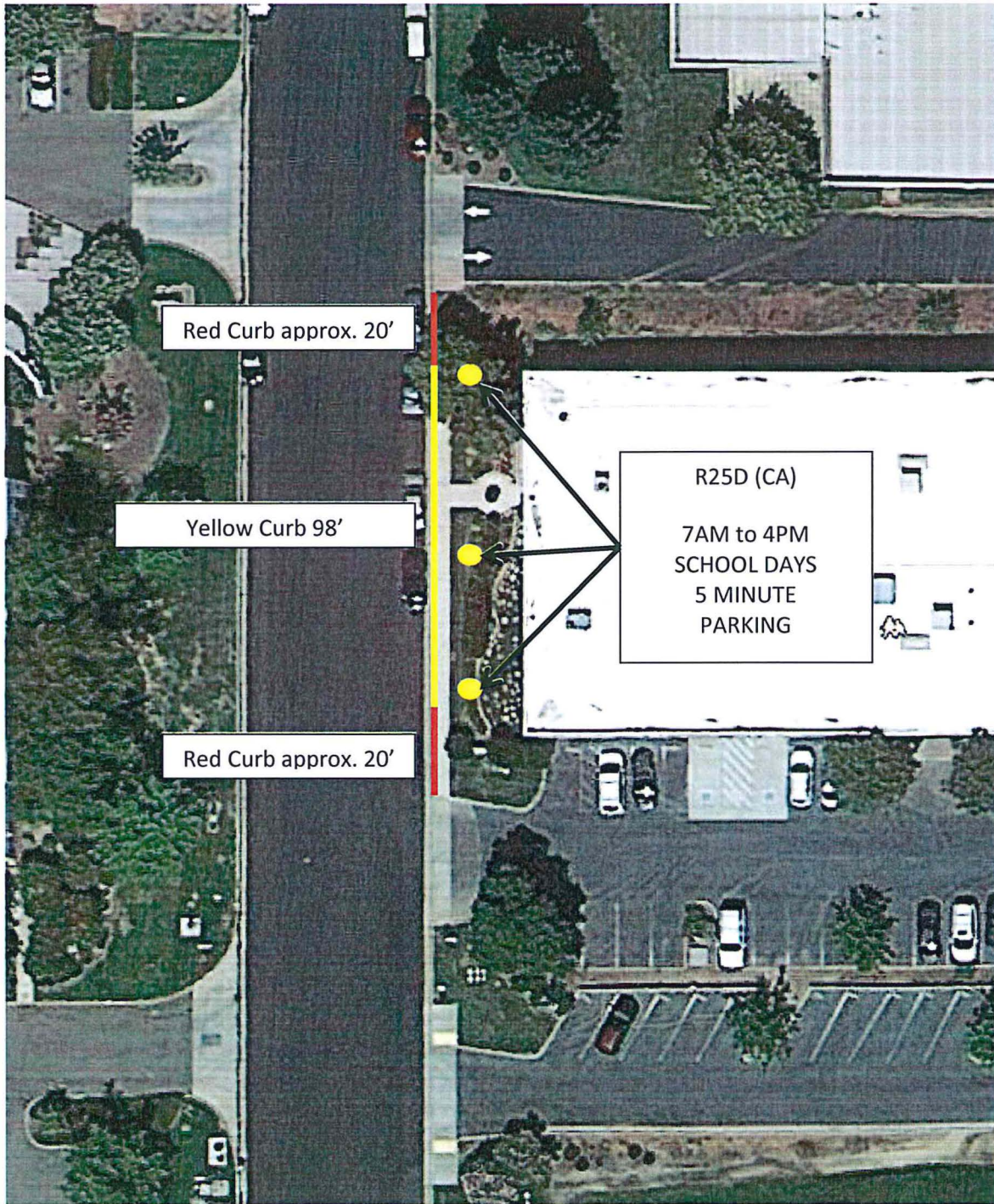
“(g) “SCHOOL LOADING” zone along the easterly side of Hillsdale Circle (No. 1133) beginning at a point 1245 feet south of Robert J. Mathews Parkway (N) and continuing south for 98 feet.”

Prepared by:  _____
Jim Hunnicutt
Senior Engineering Technician

Approved By:  _____ On 10/10/19
Rafael Martinez, Director
Community Development Services
Department of Transportation
Date

Attachments: Vicinity Map (1 page)
Vicinity Photos (4 pages)
Exhibit A (1 page)

5005 HILLSDALE CIR – MARBLE VALLEY ACADEMY “SCHOOL LOADING ZONE”



NON-SCHOOL TRAFFIC PARKING IN FRONT OF MARBLE VALLEY ACADEMY



NON-SCHOOL TRAFFIC PARKING IN FRONT OF MARBLE VALLEY ACADEMY



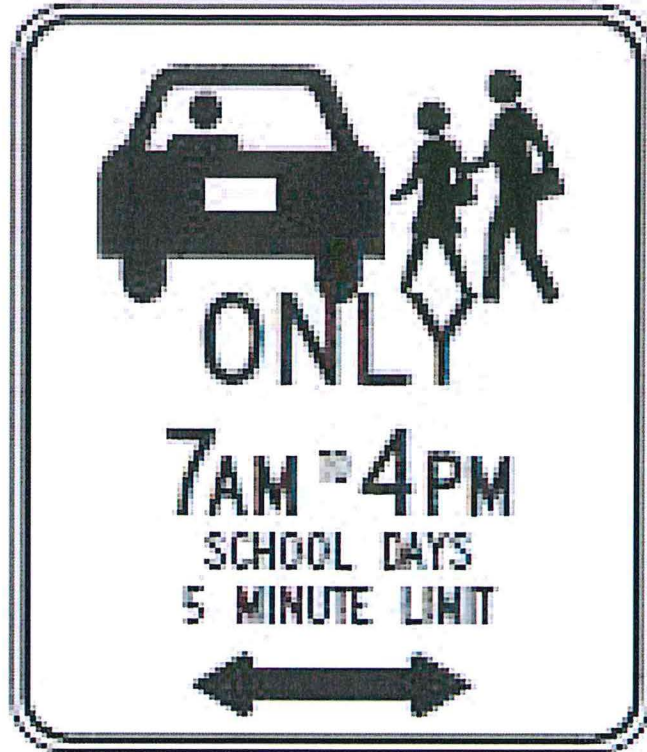


PROPOSED SCHOOL LOADING ZONE
AREA (YELLOW CURB)

DOUBLE PARKING IN FRONT OF MARBLE VALLEY ACADEMY
(Photo from Marble Valley Academy)



PROPOSED SCHOOL LOADING ZONE SIGNAGE



R25D (CA)