

INDEX OF SHEETS

No.	ROADWAY PLANS
1	TITLE SHEET
2-7	TYPICAL CROSS SECTIONS
8-15	LAYOUT
16-22	PROFILE AND SUPERELEVATION DIAGRAM
23-33	CONSTRUCTION DETAILS
34-41	EROSION CONTROL PLAN
42-45	CONTOUR GRADING
46-53	DRAINAGE PLAN
54-61	DRAINAGE PROFILE
62-65	DRAINAGE DETAILS
66-69	DRAINAGE QUANTITIES
70-77	UTILITY PLANS
78	CONSTRUCTION AREA SIGNS
79-80	STAGE CONSTRUCTION
81-103	TRAFFIC HANDLING PLAN AND DETAILS
104-109	TRAFFIC HANDLING QUANTITIES
110-117	DETOUR PLAN, DETAILS AND QUANTITIES
118-126	PAVEMENT DELINEATION PLAN AND DETAILS
127-130	PAVEMENT DELINEATION QUANTITIES
131-134	SUMMARY OF QUANTITIES
135-142	SIGN PLAN
143-145	SIGN DETAILS
146-150	SIGN QUANTITIES
151-157	RETAINING WALL PLAN AND DETAILS
158-178	ELECTRICAL PLANS

No.	STRUCTURE PLANS
<u>BRIDGE No. 25-0005 R/L</u>	
179-180	GENERAL PLAN
181	INDEX TO BRIDGE PLANS
182-183	STAGE CONSTRUCTION
184	FOUNDATION PLAN
185-188	ABUTMENT LAYOUT
189-193	ABUTMENT DETAILS
194-195	RETAINING WALLS
196-197	PEIR LAYOUT
198-204	PEIR DETAILS
205-206	TYPICAL SECTION
207	GIRDER LAYOUT
208-209	GIRDER DETAILS
210	CAMBER DIAGRAM
211-214	CROSS FRAME DETAILS
215-216	BEARING DETAILS
217-221	MISCELLANEOUS DETAILS
222	MISCELLANEOUS STEEL GIRDER DETAILS
223-225	STRUCTURE APPROACH TYPE
226	TUBULAR BICYCLE RAILING
227-232	LOG OF TEST BORINGS

**DEPARTMENT OF TRANSPORTATION
COUNTY OF EL DORADO, CA**

**PROJECT PLANS FOR CONSTRUCTION ON
STATE HIGHWAY
IN EL DORADO COUNTY
NEAR PLACERVILLE
ON US 50 FROM 0.7 km WEST
TO 1.2 km EAST OF THE US 50
MISSOURI FLAT ROAD OVERCROSSING**

TO BE SUPPLEMENTED BY STANDARD PLANS DATED JULY 2004



DIST	COUNTY	ROUTE	KILOMETER POST TOTAL PROJECT	SHEET No.	TOTAL SHEETS
03	ED	50	22.9/25.1	1	232

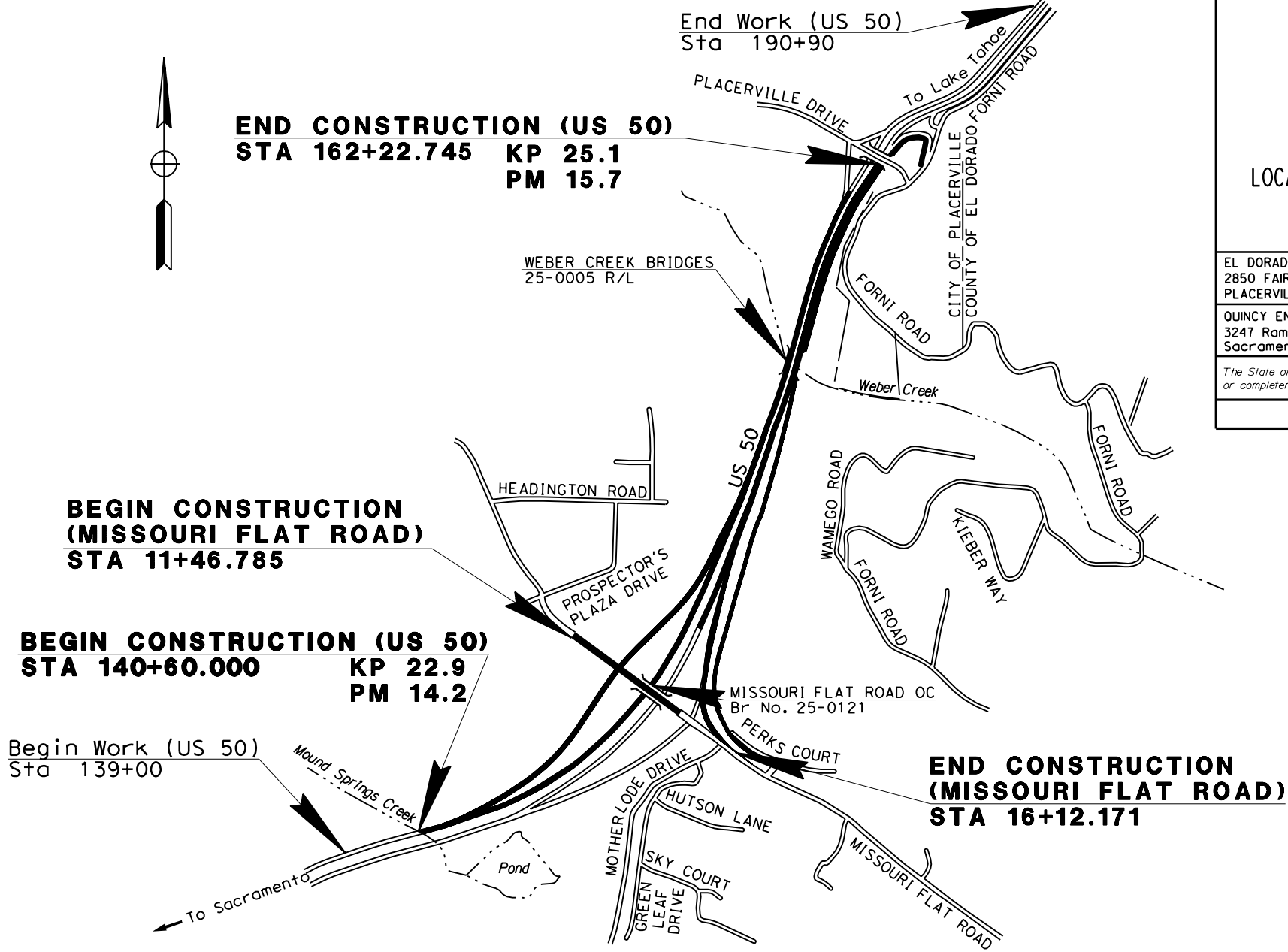


EL DORADO COUNTY
2850 FAIRLANE COURT
PLACERVILLE, CA 95667

QUINCY ENGINEERING, INC
3247 Ramos Circle
Sacramento, CA 95827

The State of California or its officers or agents shall not be responsible for the accuracy or completeness of electronic copies of this plan sheet.

To get to the Caltrans web site, go to: <http://www.dot.ca.gov>



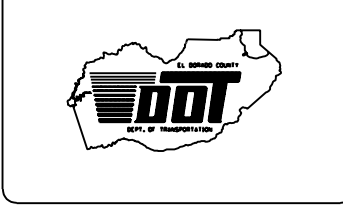
Approved as to impact on State facilities and conformance with applicable State standards and practices and that technical oversight was performed as described in the California Department of Transportation A & E Consultant Service Manual.

The Contractor shall possess the class (or classes) of license as specified in the "Notice to Contractors".

APPROVED AND ADOPTED BY:	
RON BRIGGS CHAIRMAN, EL DORADO COUNTY BOARD OF SUPERVISORS APPROVED BY:	DATE
JAMES W. WARE P.E. NO. 61036 DIRECTOR, EL DORADO COUNTY DEPARTMENT OF TRANSPORTATION APPROVED BY:	DATE
MATTHEW D. SMELTZER P.E. NO. 56932 DEPUTY DIRECTOR OF ENGINEERING, EL DORADO COUNTY DEPT. OF TRANSPORTATION	DATE

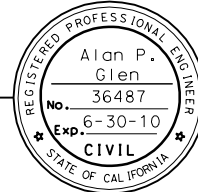
**COUNTY OF EL DORADO
DEPARTMENT OF TRANSPORTATION**

2850 FAIRLANE COURT
PLACERVILLE, CA 95667
(530) 621-5900



REVISIONS		
MARK	DATE	BY

BOARD OF SUPERVISORS	
JOHN R. KNIGHT	I
RAY NUTTING	II
JAMES R. SWEENEY	III
RON BRIGGS	IV
NORMA SANTIAGO	V



Project Manager _____ Date _____
Registered Civil Engineer

Plans Approval Date _____

CU 03131
EA 03-4E28U4
COUNTY CONTRACT NO. 71366
CONTRACT NO. 03-4E28U4

PROJECT ENGINEER: G. McLAUGHLIN; DESIGN OVERSIGHT APPROVAL: LYLE STOCKTON; REGISTRATION NO.: 52823