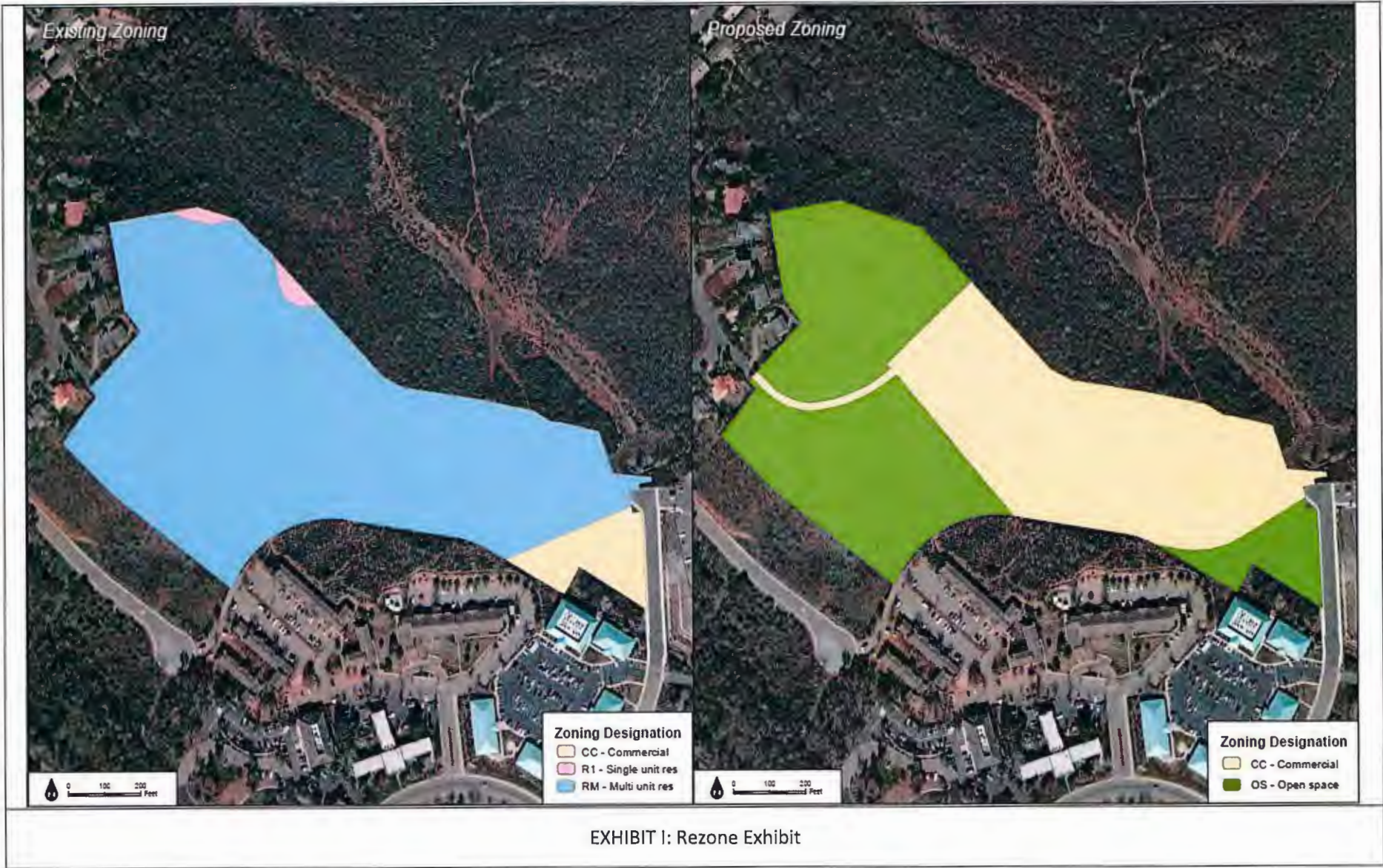
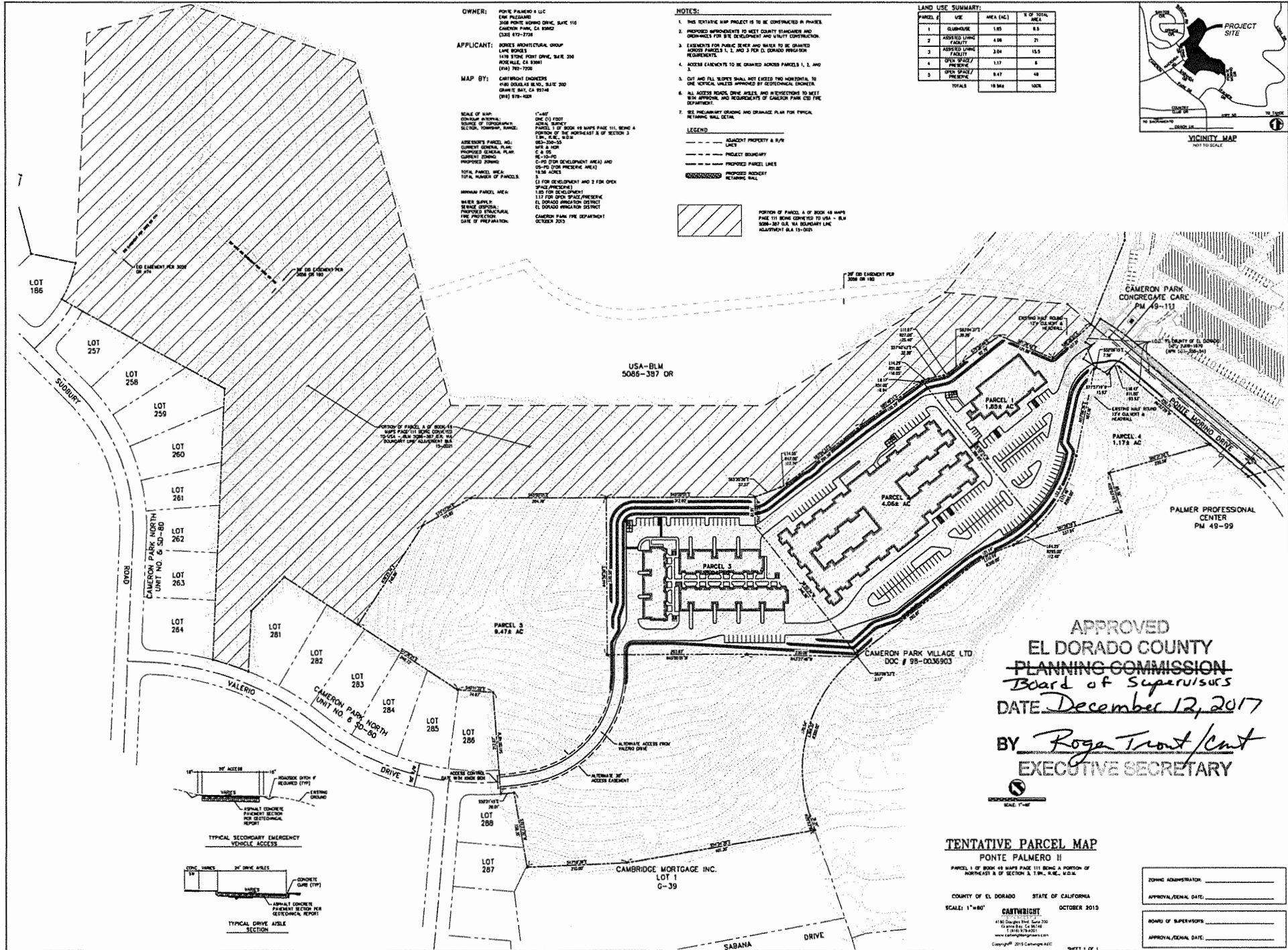




EXHIBIT I: General Plan Amendment Exhibit

APPROVED
 EL DORADO COUNTY
 PLANNING COMMISSION
 Board of Supervisors
 DATE: December 12, 2017
 BY: Roger Trout/cnt
 EXECUTIVE SECRETARY





PONTE PALMERO PHASE II

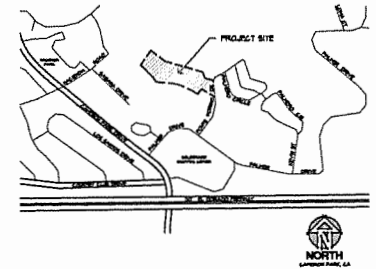
PONTE PALMERO DRIVE
CAMERON PARK, CALIFORNIA

1478 STONE POINT DRIVE
SUITE 350
ROSEVILLE CA 95661
T 916 782 7228
F 916 773 3037
BORGESARCH.COM



APPROVED
EL DORADO COUNTY
PLANNING COMMISSION
Board of Supervisors
DATE December 12, 2017
BY Rogan Trout/Cmt
EXECUTIVE SECRETARY

VICINITY MAP



SITE DATA

APN: 025-290-15
CURRENT GENERAL PLAN: MHF & MCR
PROPOSED GENERAL PLAN: G & OS
CURRENT ZONING: RE-10-PD
PROPOSED ZONING: RE-10-PD
C-PD & OS-PD
TOTAL SITE AREA: 1.41 ACRES (61,783.00 SF)
DEVELOPMENT AREA: 1.882 ACRES (82,414 SF)
PRESERVE AREA: 1.9239 ACRES (84,048 SF)

BUILDING DATA

COMMUNITY CARE FACILITY: 30,810 SF
ASSISTED LIVING FACILITY: 35,840 SF
CLUB HOUSE: 11,500 SF
TOTAL: 78,150 SF
COMMUNITY CARE FACILITY:
1ST FLOOR (22 60K UNITS): 21,364 SF
2ND FLOOR (22 20K UNITS): 22,441 SF
ASSISTED LIVING:
COMMON AREA: 23,745 SF
UNITS (22 60K + 14 20K): 24,842 SF
CLUBHOUSE:
CLUBHOUSE AREA: 11,500 SF

PARKING DATA

PARKING REQUIRED:
COMMUNITY CARE 60K: + 18 SPACES
COMMUNITY CARE 20K: + 2 SPACES
ASSISTED LIVING: + 1 SPACE PER 3 BEDS
VISITOR: + 1 SPACE PER 4 UNITS
CLUBHOUSE: + USED BY PROJEKT TENANTS - NO ADDITIONAL SPACES NEEDED
TOTAL REQ'D: + 18

22 UNITS X 1.6 = 36 SPACES
22 UNITS X 2 = 44 SPACES
60 BEDS/30 = 50 SPACES
NO UNITS/4 = 28 SPACES

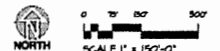
PARKING PROVIDED:
STANDARD SPACES: 45
COMPACT SPACES: 0
ACCESSIBLE SPACES: 0
TOTAL: 45
309 SPACES PROVIDED
(14 COVERED) - 4 BICYCLE CANT SPACES

OVERALL SITE PLAN

PONTE PALMERO II LLC

EXHIBIT K

DATE: 08-18-2014
JOB NO.: 0410-4
DRAWN BY: ILC



SA-0.10

PONTE PALMERO PHASE II

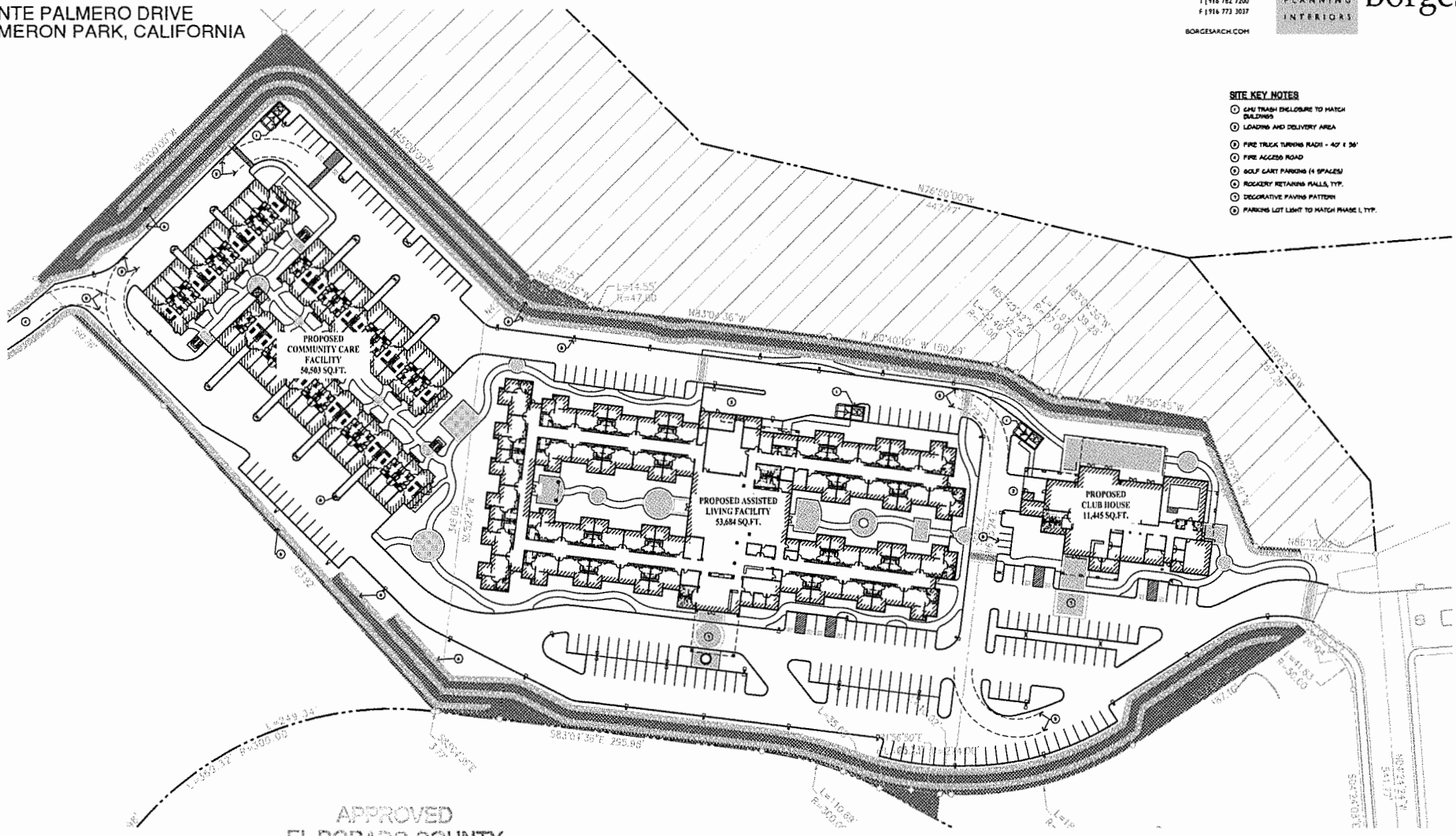
PONTE PALMERO DRIVE
CAMERON PARK, CALIFORNIA

119 STONE POINT DRIVE
SUITE 350
ROSEVILLE CA 95661
T 916 782 7200
F 916 773 3037
BORGESARCH.COM



SITE KEY NOTES

- ① CMU TRASH ENCLOSURE TO MATCH BUILDINGS
- ② LOADING AND DELIVERY AREA
- ③ FIRE TRUCK TURNING RADI - 40' x 30'
- ④ FIRE ACCESS ROAD
- ⑤ GOLF CART PARKING (4 SPACES)
- ⑥ ROCKERY RETAINING WALLS, TYP.
- ⑦ DECORATIVE PAVING PATTERN
- ⑧ PARKING LOT LIGHT TO MATCH PHASE I, TYP.



APPROVED
EL DORADO COUNTY
~~PLANNING COMMISSION~~
Board of Supervisors

PHASE II SITE PLAN

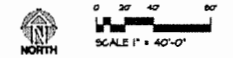
DATE December 12, 2017

PONTE PALMERO II LLC

BY Roger Trand/ent
EXECUTIVE SECRETARY

EXHIBIT L

DATE: 08-18-2014
JOB NO.: 0410-4
DRAWN BY: ILC



SA-0.30

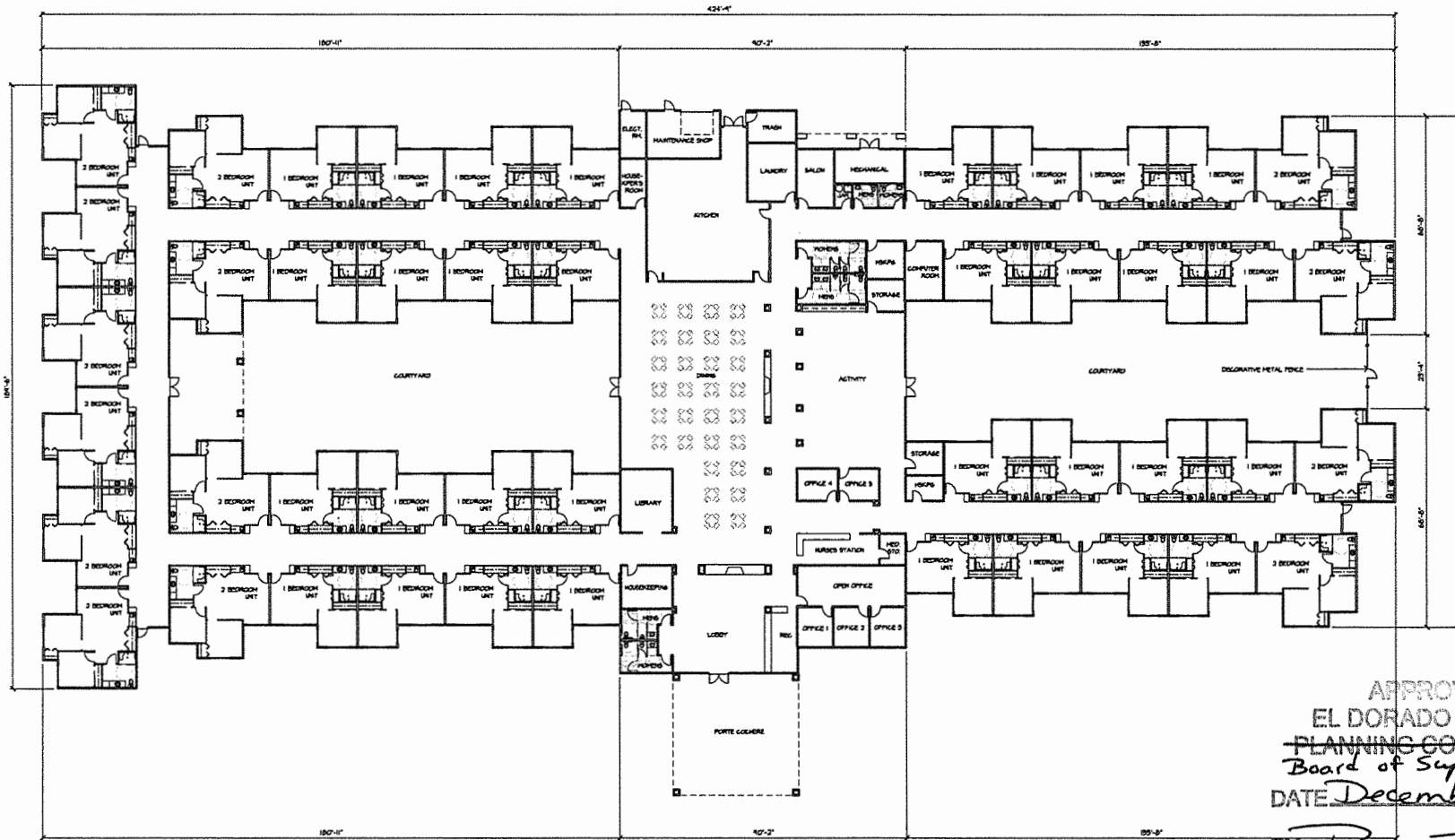
PONTE PALMERO PHASE II

PONTE PALMERO DRIVE
CAMERON PARK, CALIFORNIA

1478 STONE POINT DRIVE
SUITE 350
ROSEVILLE CA 95661
T 916 782 7200
F 916 773 3037
BORGESARCH.COM

ARCHITECTURE
PLANNING
INTERIORS

ARCHITECTURAL GROUP
Borges



UNIT SUMMARY

UNIT TYPE	QUANTITY
1 BEDROOM 1 3/4 SQ. FT.	52 UNITS
2 BEDROOM 1 100 SQ. FT.	14 UNITS
TOTAL	66 UNITS

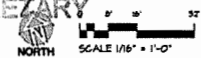
ASSISTED LIVING FLOOR PLAN

PONTE PALMERO II LLC

EXHIBIT M

APPROVED
EL DORADO COUNTY
PLANNING COMMISSION
Board of Supervisors
DATE December 12, 2017
BY Roger Trout
EXECUTIVE SECRETARY

DATE: 05-04-2014
JOB NO.: 0410-4
DRAWN BY: LLC

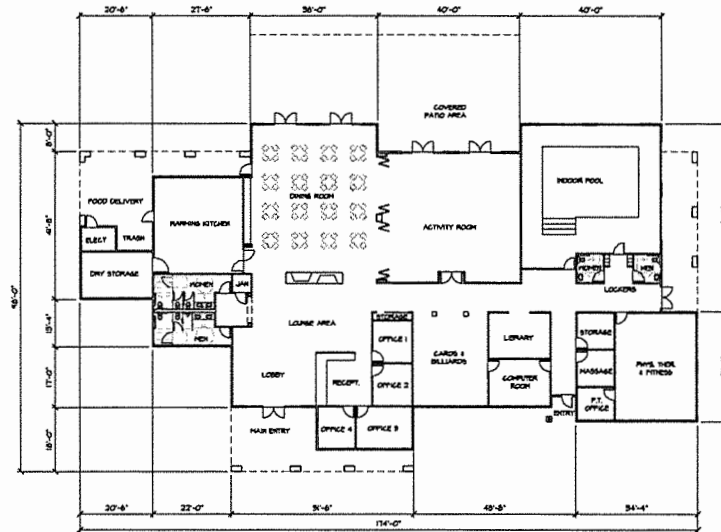


SA-1.11

PONTE PALMERO PHASE II

PONTE PALMERO DRIVE
CAMERON PARK, CALIFORNIA

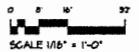
1478 STONE POINT DRIVE
SUITE 350
ROSEVILLE CA 95661
T: 916 782 7200
F: 916 773 3077
BORGESARCH.COM



CLUB HOUSE FLOOR PLAN

PONTE PALMERO II LLC

DATE: 05-09-2014
JOB NO.: 0410-4
DRAWN BY: ILC

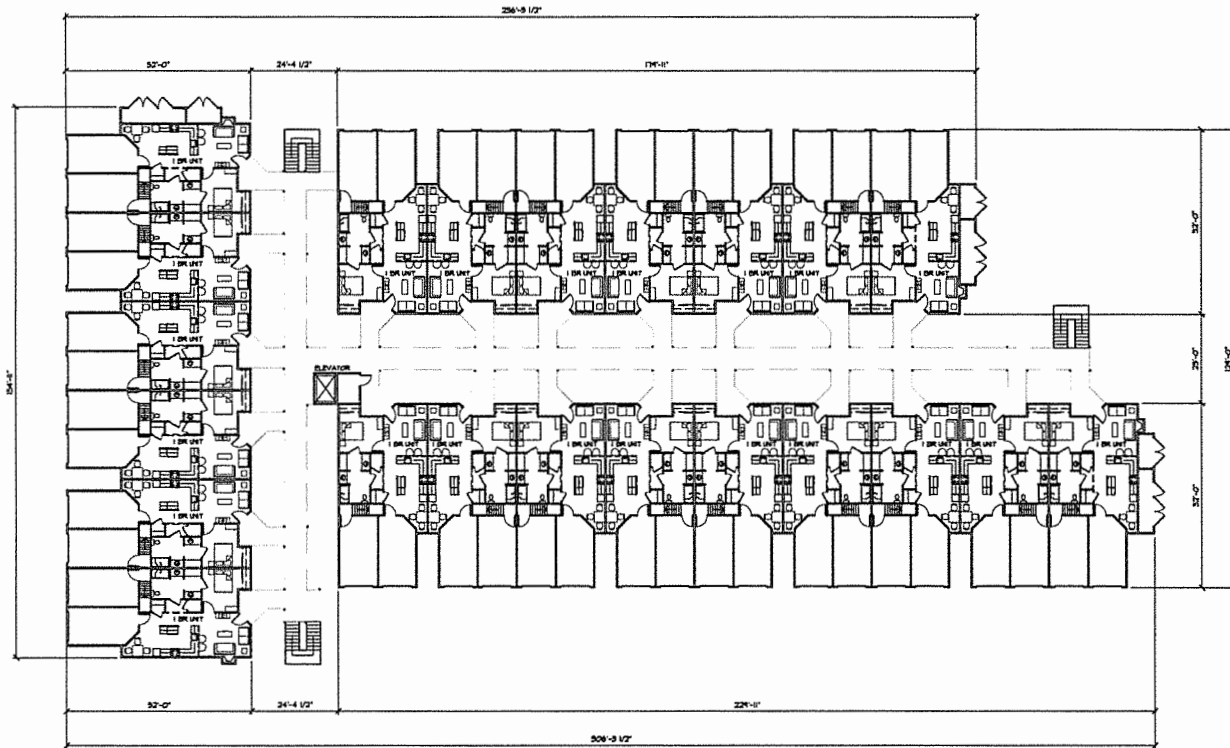


SCALE 1/8" = 1'-0"
SA-1.12

PONTE PALMERO PHASE II

PONTE PALMERO DRIVE
CAMERON PARK, CALIFORNIA

1478 STONE POINT DRIVE
SUITE 350
ROSEVILLE CA 95661
T: 916 782 7200
F: 916 773 3037
BORGESARCH.COM



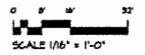
UNIT SUMMARY

FLOOR LEVEL	UNIT TYPE	QUANTITY
FIRST FLOOR	1 BEDROOM 1,144 SQ. FT.	22 UNITS
SECOND FLOOR	2 BEDROOM 1,174 SQ. FT.	22 UNITS
TOTAL		44 UNITS

COMMUNITY CARE FACILITY FLOOR PLAN

PONTE PALMERO II LLC

DATE: 08-18-2014
JOB NO.: 0410-4
DRAWN BY: ILG

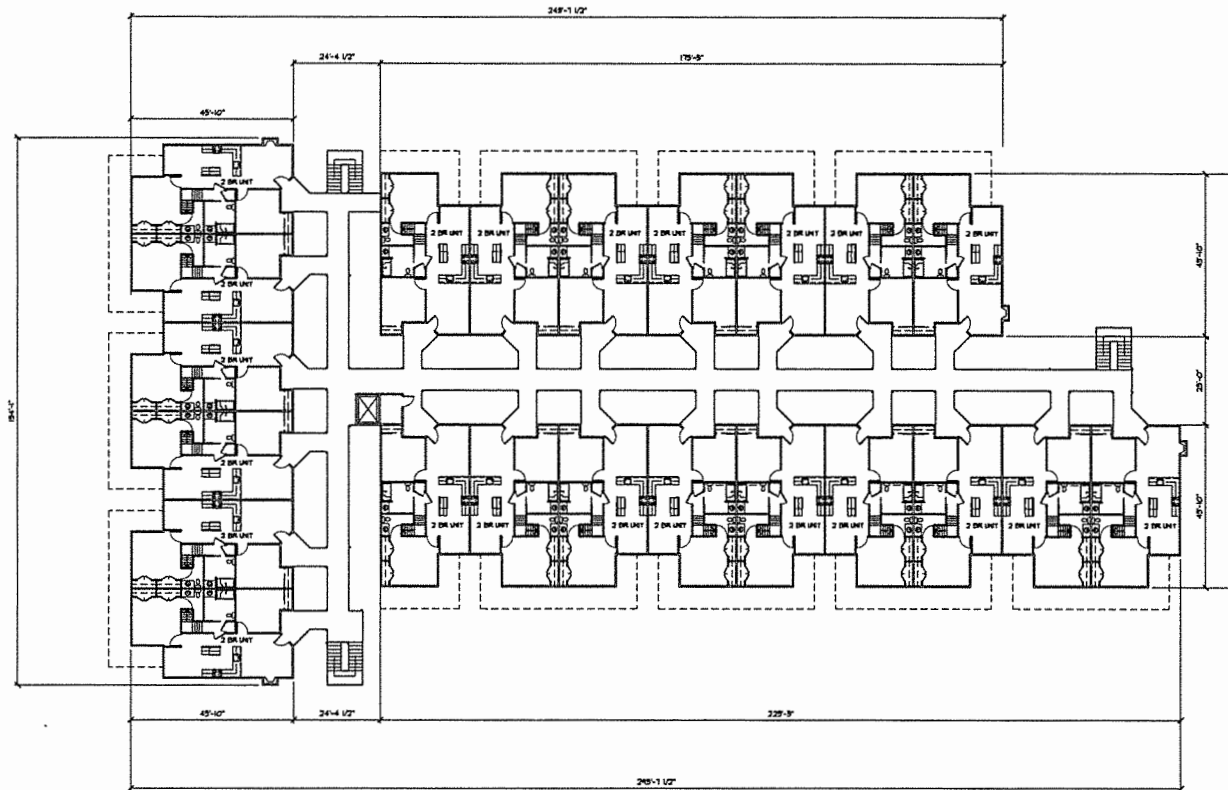


SA-1.13

PONTE PALMERO PHASE II

PONTE PALMERO DRIVE
CAMERON PARK, CALIFORNIA

1175 STONE POINT DRIVE
SUITE 350
ROSEVILLE CA 95661
T (916) 782 7200
F (916) 773 3037
BORGESARCH.COM



UNIT SUMMARY

FLOOR LEVEL	UNIT TYPE	QUANTITY
FIRST FLOOR	1 BEDROOM 9164 SQ. FT.	22 UNITS
SECOND FLOOR	2 BEDROOM 11501 SQ. FT.	22 UNITS
TOTAL		44 UNITS

COMMUNITY CARE FACILITY SECOND FLOOR PLAN

PONTE PALMERO II LLC

DATE: 08-18-2014
JOB NO.: 0410-4
DRAWN BY: ILG



SCALE 1/16" = 1'-0"

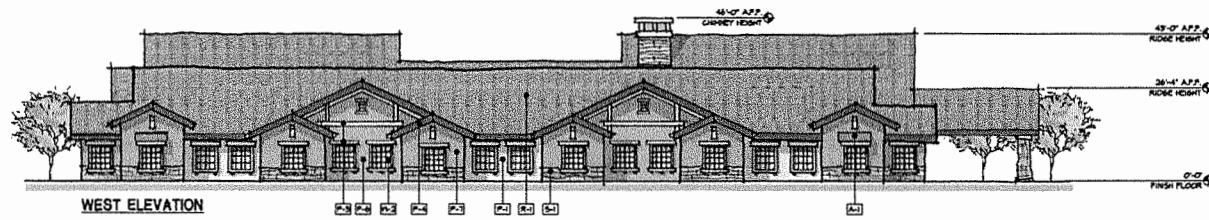
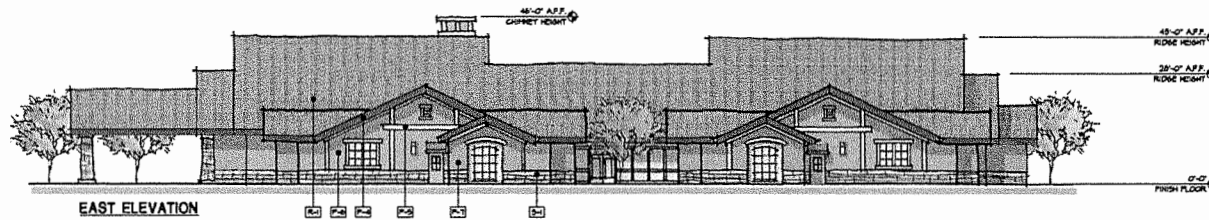
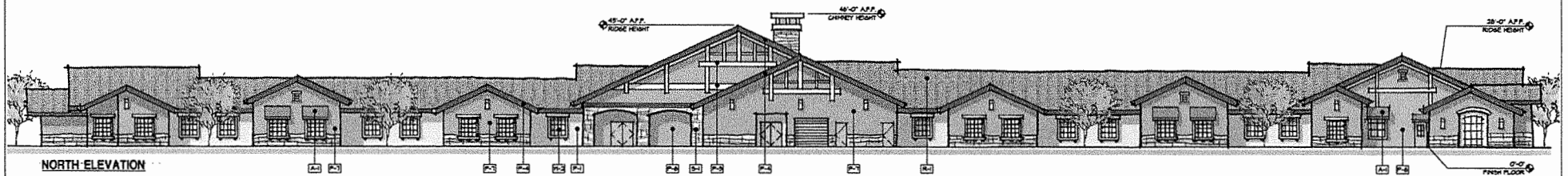
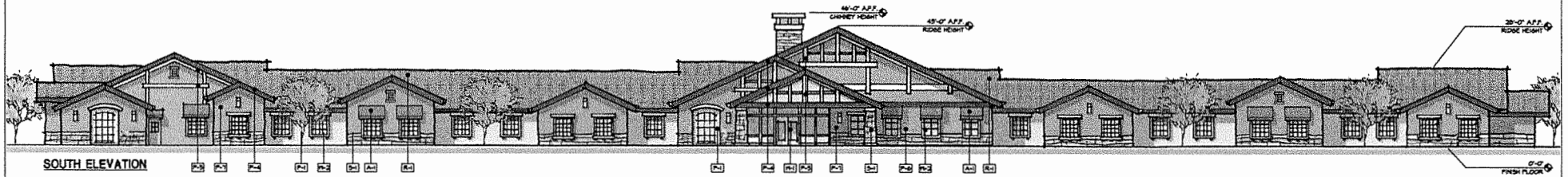
SA-1.14

PONTE PALMERO PHASE II

PONTE PALMERO DRIVE
CAMERON PARK, CALIFORNIA

1179 STONE POINT DRIVE
SUITE 350
ROSBYILLE CA 95661
T 916 782 7200
F 916 773 3037
BORGESARCH.COM

ARCHITECTURAL GROUP
Borges
PLANNING
INTERIORS



- COLOR MATERIAL LEGEND**
- P-1 FIELD PAINT COLOR KELLY MOORE 28 'SPRINK'
 - P-2 FIELD PAINT COLOR KELLY MOORE 29 'SPANISH SAND'
 - P-3 ACCENT PAINT COLOR KELLY MOORE 22 'SALTFLAT'
 - P-4 ACCENT PAINT COLOR KELLY MOORE 1004-4-9 'YOGHA HOUSE'
 - P-5 ACCENT PAINT COLOR KELLY MOORE D022-1 'SOFT SEASAME'
 - P-6 FIELD PAINT COLOR KELLY MOORE 11 'WOOD HORSE'
 - P-7 FIELD PAINT COLOR KELLY MOORE 228 'SHARRO'
 - S-1 STONE VENEER CULTURED STONE 'OLIVE COUNTRY LEDGESTONE'
 - A-1 FABRIC FINISH SANDWELLA 487-0000 'TERRY'
 - R-1 ROOFING EAGLE DEL AIR 4606 'VALLEJO RANGE'
 - P-1 WINDOW FRAME BLONDEA 'MEDIUM BRONZE'
 - P-2 WINDOW FRAME BLONDEA 'TORGHE PRATE'

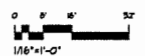
ASSISTED LIVING EXTERIOR ELEVATIONS

PONTE PALMERO II LLC

EXHIBIT N

APPROVED
EL DORADO COUNTY
PLANNING COMMISSION
Board of Supervisors
DATE December 13, 2017
BY Roger Trout/Cast
EXECUTIVE SECRETARY

DATE: 05-01-2014
JOB NO.: 0410-1
DRAWN BY: ILC

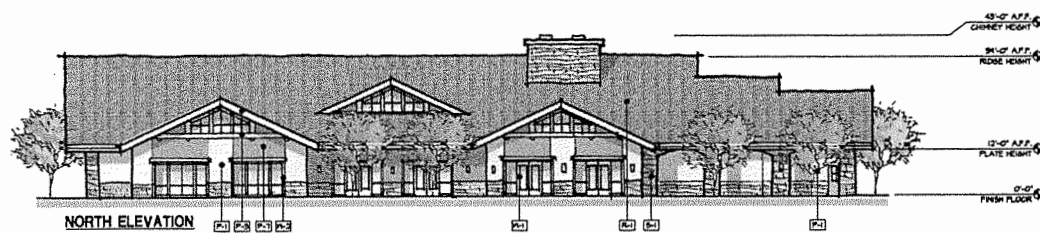
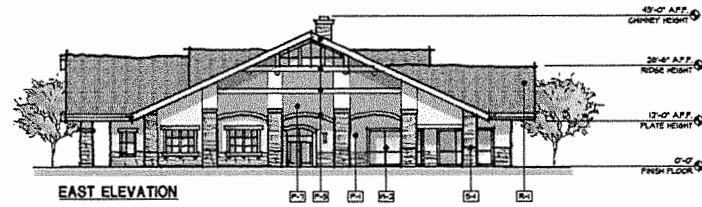
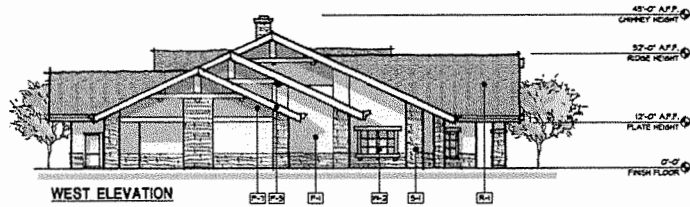
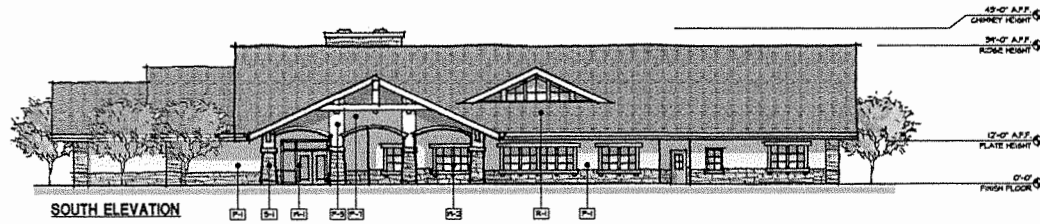


SA-1.31

PONTE PALMERO PHASE II

PONTE PALMERO DRIVE
CAMERON PARK, CALIFORNIA

149 STONE POINT DRIVE
SUITE 350
ROSEVILLE CA 95661
T 916 782 7200
F 916 773 3037
BOGESARCH.COM



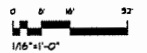
COLOR MATERIAL LEGEND

- P-1 FIELD PAINT COLOR
KELLY MOORE 26 'OYSTERS'
- P-2 FIELD PAINT COLOR
KELLY MOORE 23 'SPANISH SAND'
- P-3 ACCENT PAINT COLOR
KELLY MOORE 37 'SANTILLO'
- P-4 ACCENT PAINT COLOR
KELLY MOORE K044-9 'MOCHA HOUSE'
- P-5 ACCENT PAINT COLOR
KELLY MOORE 3025H 'SOFT SESAME'
- P-6 FIELD PAINT COLOR
KELLY MOORE M1 'WOOD HOOP'
- P-7 FIELD PAINT COLOR
KELLY MOORE 22B 'SHARRO'
- S-1 STONE VENEER
CULTURED STONE 'MOLAVE COUNTRY LEDGESTONE'
- A-1 FABRIC APPLS
SANDWELLA 48T-0000 'YERY'
- R-1 ROOFING
EAGLE BLD. AIR 4608 'VALLEJO RANGE'
- F-1 FIBERON FRAME
BLOMBERG 'MEDIUM BRONZE'
- F-2 FIBERON FRAME
BLOMBERG 'PORSCHE WHITE'

CLUB HOUSE EXTERIOR ELEVATIONS

PONTE PALMERO II LLC

DATE: 05-01-2014
JOB NO.: 04110-4
DRAWN BY: ILC



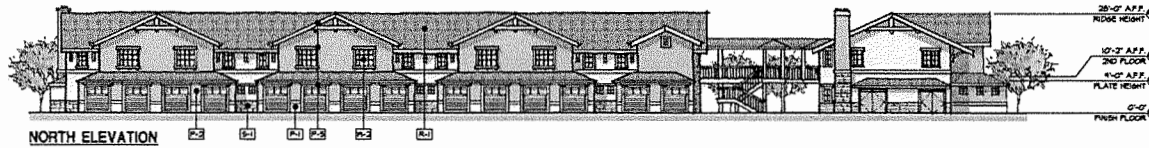
SA-1.32

PONTE PALMERO PHASE II

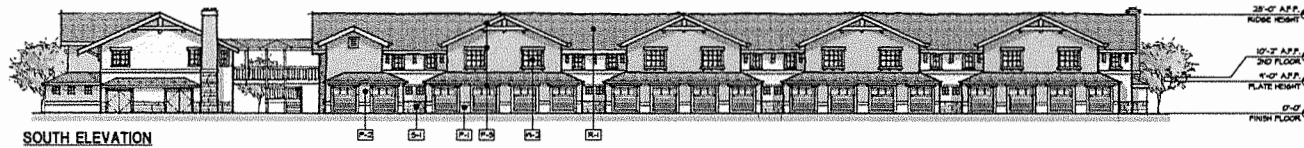
PONTE PALMERO DRIVE
CAMERON PARK, CALIFORNIA

1175 STONE POINT DRIVE
SUITE 350
ROSEVILLE CA 95661
T (916) 782 7200
F (916) 773 3037
BORGESARCH.COM

ARCHITECTURE
PLANNING
INTERIORS
Borges
ARCHITECTURAL GROUP



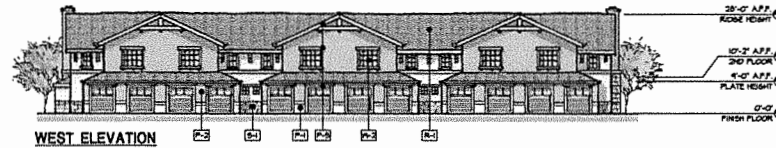
NORTH ELEVATION



SOUTH ELEVATION



EAST ELEVATION

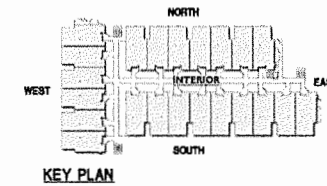


WEST ELEVATION

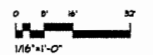


INTERIOR ELEVATION

- COLOR MATERIAL LEGEND**
- P-1 FIELD PAINT COLOR
KELLY MOORE 26 "OYSTER"
 - P-2 FIELD PAINT COLOR
KELLY MOORE 29 "SPINISH SAND"
 - P-3 ACCENT PAINT COLOR
KELLY MOORE 213 "SANTILLO"
 - P-4 ACCENT PAINT COLOR
KELLY MOORE 60944-3 "TODNA HOUSE"
 - P-8 ACCENT PAINT COLOR
KELLY MOORE 09224 "SOFT SEASAME"
 - P-8 FIELD PAINT COLOR
KELLY MOORE #1 "WOOD HORN"
 - P-1 FIELD PAINT COLOR
KELLY MOORE 226 "CHARRIS"
 - S-1 STONE VENEZ
CULTURED STONE "JOLUAVE GRANITE LEDGESTONE"
 - A-1 FABRIC APPLIES
BAMBERGLA 4878-0000 "VERN"
 - R-1 ROOFING
EAGLE DEL ANH 4806 "VALLEJO RANGE"
 - M-1 WINDOW FRAME
BUSHBERG "MEDIUM BRONZE"
 - M-2 WINDOW FRAME
BUSHBERG "PORSCHE WHITE"



KEY PLAN



COMMUNITY CARE FACILITY EXTERIOR ELEVATIONS

PONTE PALMERO II LLC

DATE: 08-10-2014
JOB NO.: 0410-4
DRAWN BY: ILC

SA-1.33

TREE LIST & LEGEND

SYMBOL	BOTANIC NAME / COMMON NAME	SIZE
	ARCEBUTYUM OCTOBER GLOMERATED MAPLE	15 GALLON
	CESTUS OCCIDENTAL/WESTERN REDBUD	15 GALLON
	MANGNOLIA G. LITTLE BLOSSOM / SOUTHERN MANGNOLIA	15 GALLON
	OLEA EUROPEA WILSON'S FRUITLESS OLIVE	15 GALLON
	PISTACIA CHINENSIS/CHINESE PISTACHE	15 GALLON
	PLATANUS A. 'HAPPYWOOD'/DRAGON PLATANUS	15 GALLON
	QUERCUS LOSATA/VALEY OAK	15 GALLON
	QUERCUS MOLANDE/INTERIOR LIVE OAK	15 GALLON
	QUERCUS SAMPERNENSIS / AFTER DANCE/CAST REDWOOD	15 GALLON
	QUINCESBUS SAMPERNENSIS / STRICKSTRAWN OYSTER	15 GALLON
	SHRUB & GROUND COVER AREA (SEE PLANT LIST AT RIGHT)	
	IRRIGAL GRASSES & WILDLOWERS	

SHRUB LIST

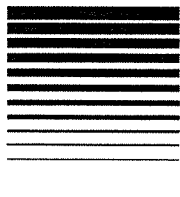
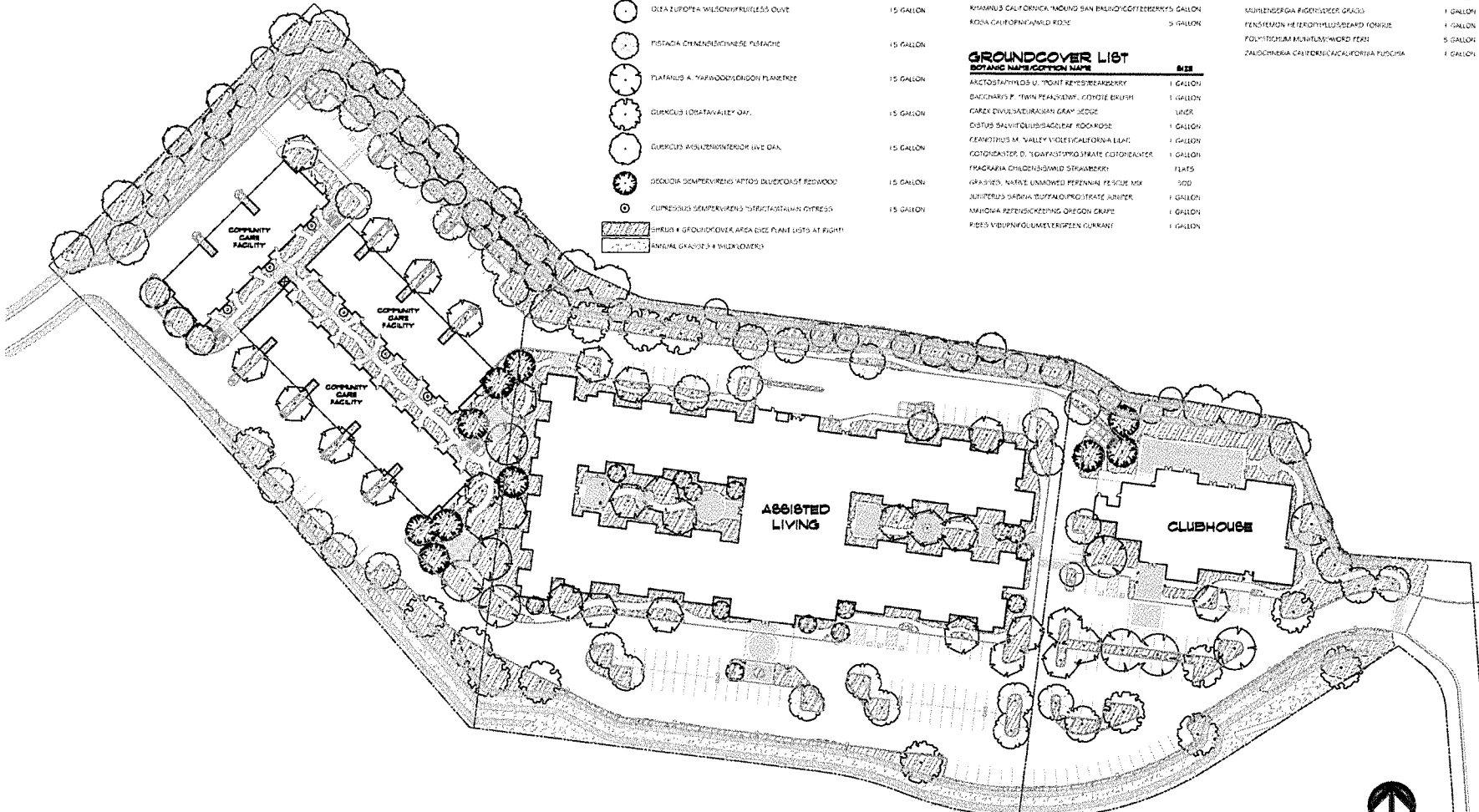
BOTANIC NAME / COMMON NAME	SIZE
ARCTOSTAPHYLOS U. 'SUNSET' / MANZANITA	5 GALLON
CARYOPHTERIS OCCIDENTALIS / SPICE BUSH	5 GALLON
CAFFRANTHERA CALIFORNICA / BUSH ANEMONE	5 GALLON
CESTUS HYBRIDUS / WHITE ROSEWOOD	5 GALLON
CESTUS PURPUREUS / PURPLE ROSEWOOD	5 GALLON
CEANOTHUS 'SONOMA' / CALIFORNIA LIAC	5 GALLON
ERIODENDRUM PACIFICUM / CALIFORNIA BLUECYPRESS	1 GALLON
LAVANDULA A. 'VALLEY GARDEN' / LAVENDER	1 GALLON
RYTHYMUS CALIFORNICA 'MOUND SAN EMILIO' / COFFEE BERRY'S	1 GALLON
ROSA CALIFORNICA / WILD ROSE	5 GALLON

GROUND COVER LIST

BOTANIC NAME / COMMON NAME	SIZE
ARCTOSTAPHYLOS U. 'POINT REYES' / RED BERRY	1 GALLON
BACCHARIS P. 'TWIN PEAKS' / SAMY / COYOTE BUSH	1 GALLON
CAREX DIVINAE / SACRED BURNING GUM / SEDGE	1 GALLON
CESTUS SALVIFOLIUS / AGOLEAF / ROSEWOOD	1 GALLON
CEANOTHUS M. 'VALLEY VIOLET' / CALIFORNIA LIAC	1 GALLON
CEOTIS/CESTUS D. 'LEAFY' / FASTIGIATED / CEOTIS / CEALYCE	1 GALLON
FRAGARIA CHILDSII / WILD STRAWBERRY	FLATS
GRASSES, NATIVE UNNAMED PERENNIAL PESTICE MIX	500
JURIPERUS SARDIA / BUTTAN / PROSTRATE JUNIPER	1 GALLON
MIMULUS REPENS / CREEPING OREGON CRANE	1 GALLON
PIRIS VIBURNIFOLIA / WAXY GREEN CURRANT	1 GALLON

PERENNIAL LIST

BOTANIC NAME / COMMON NAME	SIZE
AGANTHUS PALLASII / BEAKS BEECH	5 GALLON
COREOPSIS GRANDIFLORA 'SUNBELT' / COREOPSIS	1 GALLON
DIANELIA GAZERANA 'YACON' / BLUE BELLY FLAX LILY	1 GALLON
HEMEROCALLIS BANGSIANA / PRODIGAL BELLS	1 GALLON
HEMEROCALLIS 'EMERALD' / EMERALD HYDRANGEA	1 GALLON
IRIS DONGELATA / CALIFORNIA IRIS	1 GALLON
LENTYLUS CONDENSATUS 'CANYON' / MEXICAN BLUE WILD RYE	1 GALLON
MONARDELLA VILLOSA / HOT MINT	1 GALLON
MULLENBERGIA FUGIFLORA / GREASY GRASS	1 GALLON
PENSTEMON HELEOXYLLUS / SEARD / FORTUNE	1 GALLON
POLYSTRICHUM MONTANUM / WOOD FERN	5 GALLON
ZALDOCHNERIA CALYCEATA / FORTUNA PUSCHIA	1 GALLON



Gary Ruffner
Landscape Architect
(951) 777-0076

4100 Dupont Blvd #200-201, Riverside, California 92506
GRR@GRR.com CA Landscape Architect #21000

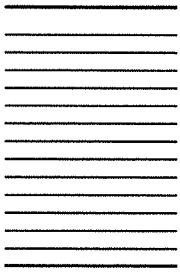
Project:

**PONTE PALMERO
PHASE II**

GARDNER DRIVE
COUNTY OF EL DORADO
CALIFORNIA

Sheet Title:

**PRELIMINARY
LANDSCAPE
PLAN**



Date: 01/18/14

Scale: 1"=40'-0"

Job Number: 31026

Sheet Number: LA of 2



EXHIBIT O

APPROVED
EL DORADO COUNTY
PLANNING COMMISSION
Board of Supervisors
DATE December 13, 2017
BY Roger Trout / cmr
EXECUTIVE SECRETARY

HYDROZONE INFORMATION TABLE

HYDROZONE	PLANT WATER USE/ VALVE	IRRIGATION METHOD	AREA (SQ. FT.)	% OF LAND	SCAPE AREA	PLANT FACTOR*
C1	LOW (FULL SUN)	DSF	40332	44.5%	0.2 x 1.0 x 0.0 = 0.20	
C2	LOW (FULL SUN)	DSF	2248	2.5%	0.2 x 1.0 x 0.0 = 0.20	
C3	MEDIUM (FULL SUN)	DSF	46570	53.0%	0.5 x 1.0 x 0.0 = 0.50	
TOTAL			90650	100%		

WATER BUDGET CALCULATION

MAXIMUM APPLIED WATER ALLOWANCE (MAWA) = 7993688 GALLONS PER YEAR

$$MAWA = 58.2 \text{ CFS} \times 0.62 \text{ GALS/FT}^3 \times 0.70 \text{ (ET ADJ. FACTOR)} \times 30650 \text{ SQ. FT. LAND SCAPE AREA}$$

ESTIMATED TOTAL WATER USE (ETWAU) = 174864 GALLONS PER YEAR (8% OF MAWA)

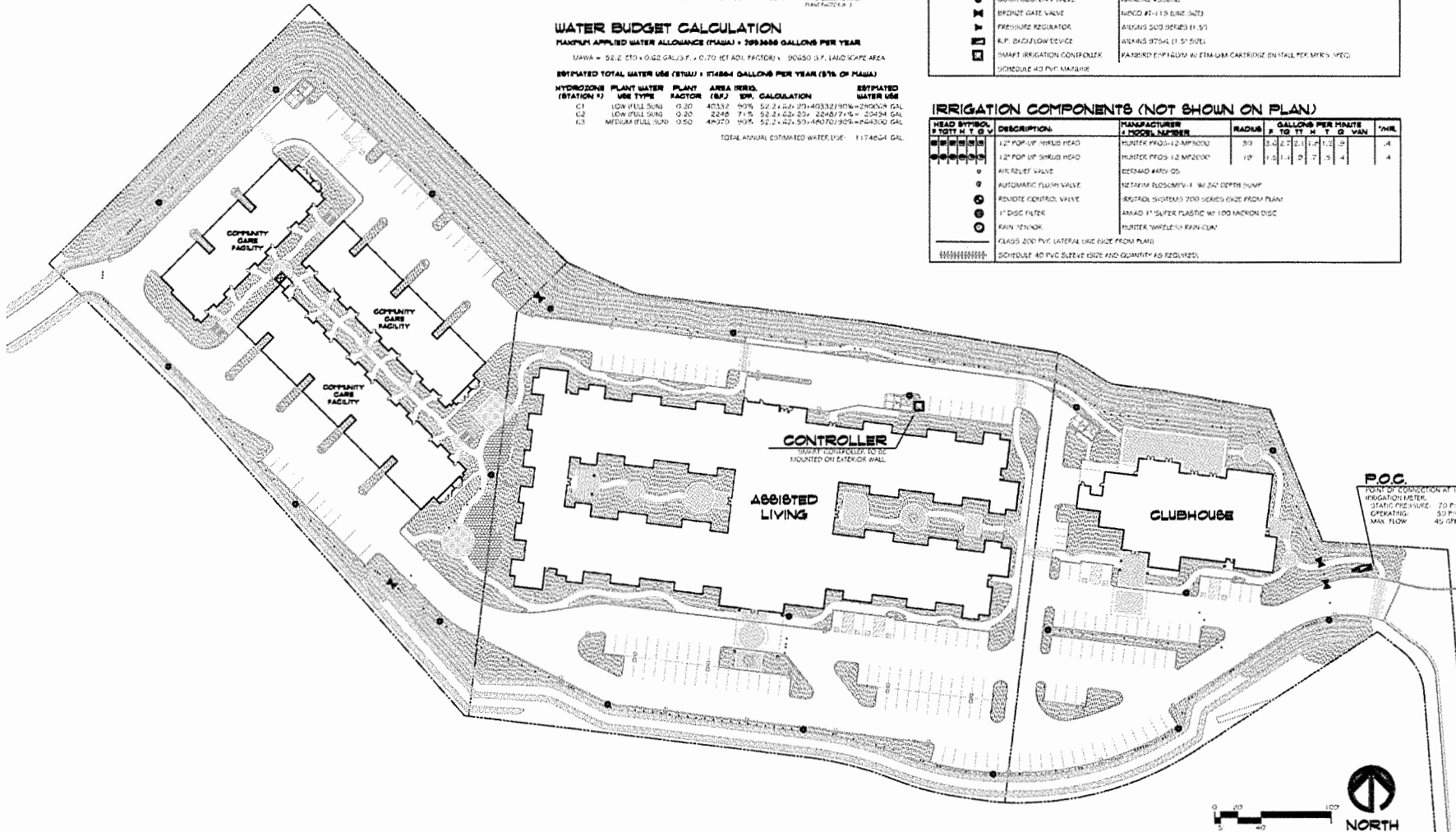
HYDROZONE (STATION #)	PLANT WATER USE TYPE	PLANT FACTOR	AREA (SQ. FT.)	AREA IRRIG.	ESTIMATED WATER USE
C1	LOW (FULL SUN)	0.20	40332	90%	52.2 x 40.332 x 0.20 = 840.6 GAL
C2	LOW (FULL SUN)	0.20	2248	71%	98.2 x 46.25 x 0.20 = 904.9 GAL
C3	MEDIUM (FULL SUN)	0.50	46570	90%	52.2 x 42.51 x 0.50 = 1107.9 GAL
TOTAL ANNUAL ESTIMATED WATER USE = 174864 GAL					

IRRIGATION LEGEND

HEAD SYMBOL	DESCRIPTION	MANUFACTURER & MODEL NUMBER	RADIUS	GALLONS PER MINUTE TO FT. M. T. Q. WAVE	"/HR.
○	PISTONIZE COMP. DRIPLINE	PAINTER #20-50-1/4	0'	1.02 GPM/100'	7
○	STREAM EJECTOR HEADS	HUNTER MP 50525			
○	ORCH. COUPLERS VALVE	PAINTER #3530C			
○	FRONT GATE VALVE	HUNTER #1-1/2 GUNZ 3470			
○	PRESSURE REGULATOR	AREAS 503 SERIES (1-1/2)			
○	A.P. BACKFLOW DEVICE	AREAS 875AL (1-1/2 SIZE)			
○	SMART IRRIGATION CONTROLLER	PAINTER E-11 PLUM W/ ETIM UM CARTRIDGE ON-TAIL PER.MYS. IPEQ			
○	SCHEDULE 40 PVC MAINLINE				

IRRIGATION COMPONENTS (NOT SHOWN ON PLAN)

HEAD SYMBOL	DESCRIPTION	MANUFACTURER & MODEL NUMBER	RADIUS	GALLONS PER MINUTE TO FT. M. T. Q. WAVE	"/HR.
○	1/2" POP UP SPRINKLER HEAD	HUNTER PRO-12 MP1010	30'	3.0 x 2.2 x 2.1 x 1.6 x 1.3 x 1.0	4
○	1/2" POP UP SPRINKLER HEAD	HUNTER PRO-12 MP2000	18'	1.0 x 1.1 x 0.7 x 0.5 x 0.4	4
○	AIR RELIEF VALVE	BEEMAN #470 05			
○	AUTOMATIC FLUSH VALVE	NETEM R5030M-1 1/2" 20' DEPTH PUMP			
○	REMOTE CONTROL VALVE	BRIGAD SYSTEMS 700 SERIES (SIZE FROM PLAN)			
○	1" DISC FILTER	AMAD 1" SUPER PLASTIC W/ 100 MICRON DISC			
○	RAIN SENSING	HUNTER WIRELESS RAIN-CLIM			
○	CLASS 200 PVC LATERAL (SIZE FROM PLAN)				
○	SCHEDULE 40 PVC SUTURE SIZE AND QUANTITY AS REQUIRED.				



Garth Ruffner
Landscape Architect
(916) 797-8879

1300 Douglas Blvd., #200-201, Roseville, California 95746
GarthRuffner.com CA Landscape Architect #2004

Project:

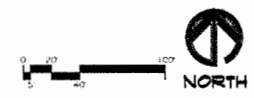
PONTE PALMERO PHASE II

GARDEN DRIVE
COUNTY OF EL DORADO
CALIFORNIA

Sheet Title:

PRELIMINARY IRRIGATION PLAN

P.O.C.
POINT OF CONNECTION AT 1/2" IRRIGATION METER.
STATIC PRESSURE: 70 PSI
OPERATING: 50 PSI
MAX. FLOW: 45 GPM



Date: 8/19/14

Scale: 1"=40'-0"

Job Number: 31026

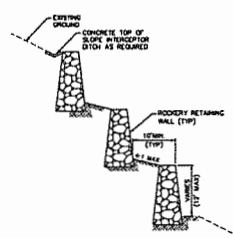
Sheet Number: LR of 2

NOTES:

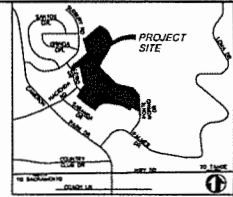
1. CUT AND FILL SLOPES SHALL NOT EXCEED TWO HORIZONTAL TO ONE VERTICAL UNLESS APPROVED BY GEOTECHNICAL ENGINEER.
2. DRAINAGE EASEMENTS TO BE GRANTED BETWEEN PARCELS 1 & 2 AND 2 & 3.
3. ALL ACCESS ROADS, DRIVE ANGLES AND INTERSECTIONS TO MEET APPROVAL AND REQUIREMENTS OF CAMERON PARK CSD FIRE DEPARTMENT.
4. APPROXIMATE BAR EARTHWORK QUANTITIES:
CUT = 12,800 C.Y.
FILL = 11,200 C.Y.

LEGEND

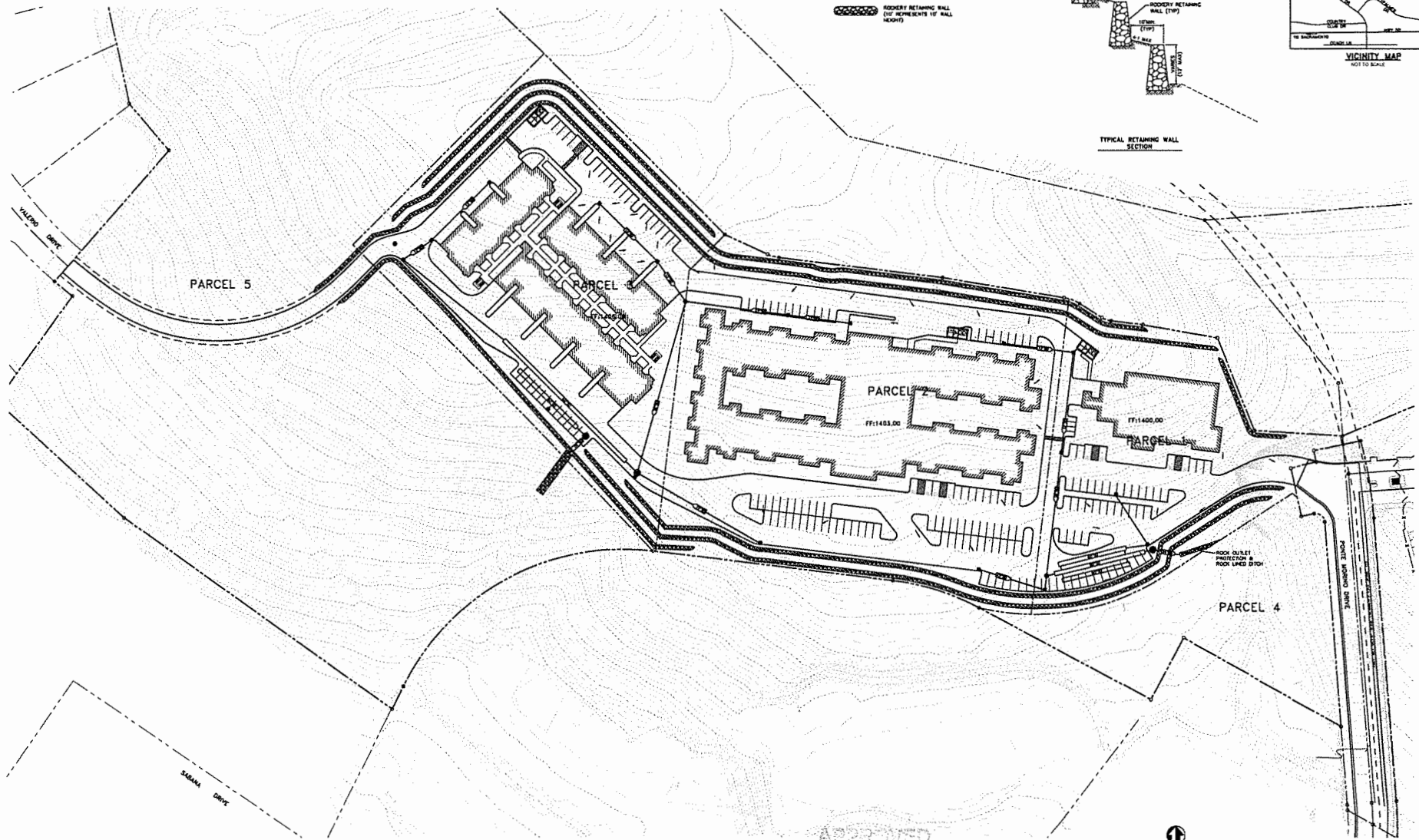
- STORM DRAIN PIPE
- DRAIN WILET
- STORM DRAIN MANHOLE
- DETENTION FLOW CONTROL MANHOLE
- DETENTION STORAGE PIPING
- PROPOSED CONTOUR
- DRAINAGE FLOW DIRECTION
- ROCKERY RETAINING WALL (TYP. HEIGHT)



TYPICAL RETAINING WALL SECTION



VICINITY MAP
NOT TO SCALE



APPROVED
 EL DORADO COUNTY
 PLANNING COMMISSION
 Board of Supervisors
 DATE December 12, 2017
 BY Rosa Tron/ct
 EXECUTIVE SECRETARY

EXHIBIT P

OWNER: PONTE PALMERO II LLC
 3108 PONTE MORNO DRIVE, SUITE 110
 CAMERON PARK, CA 92603
 (949) 872-2728

APPLICANT: BOND'S ARCHITECTURAL GROUP
 LANE MONSIE
 1178 STONE POINT DRIVE, SUITE 200
 ROSELLE, CA 92661
 (949) 782-7000

MAP BY: CARTWRIGHT ENGINEERS
 4180 DOUGLASS BLVD., SUITE 200
 GRANITE HILLS, CA 95748
 (916) 878-4001

PRELIMINARY GRADING & DRAINAGE PLAN
 PONTE PALMERO II
 PARCEL 1 OF BOOK 43 NAME PAGE 111 BEING A PORTION OF NORTH-EAST 1/4 OF SECTION 3, T.10N., R.5E., N.20M.

COUNTY OF EL DORADO STATE OF CALIFORNIA
 SCALE: 1"=40'
 OCTOBER 2015

CARTWRIGHT
 4180 Douglas Blvd. Suite 200
 Granite Hills, CA 95748
 T. 916.878.4001
 www.cartwrightengineers.com