

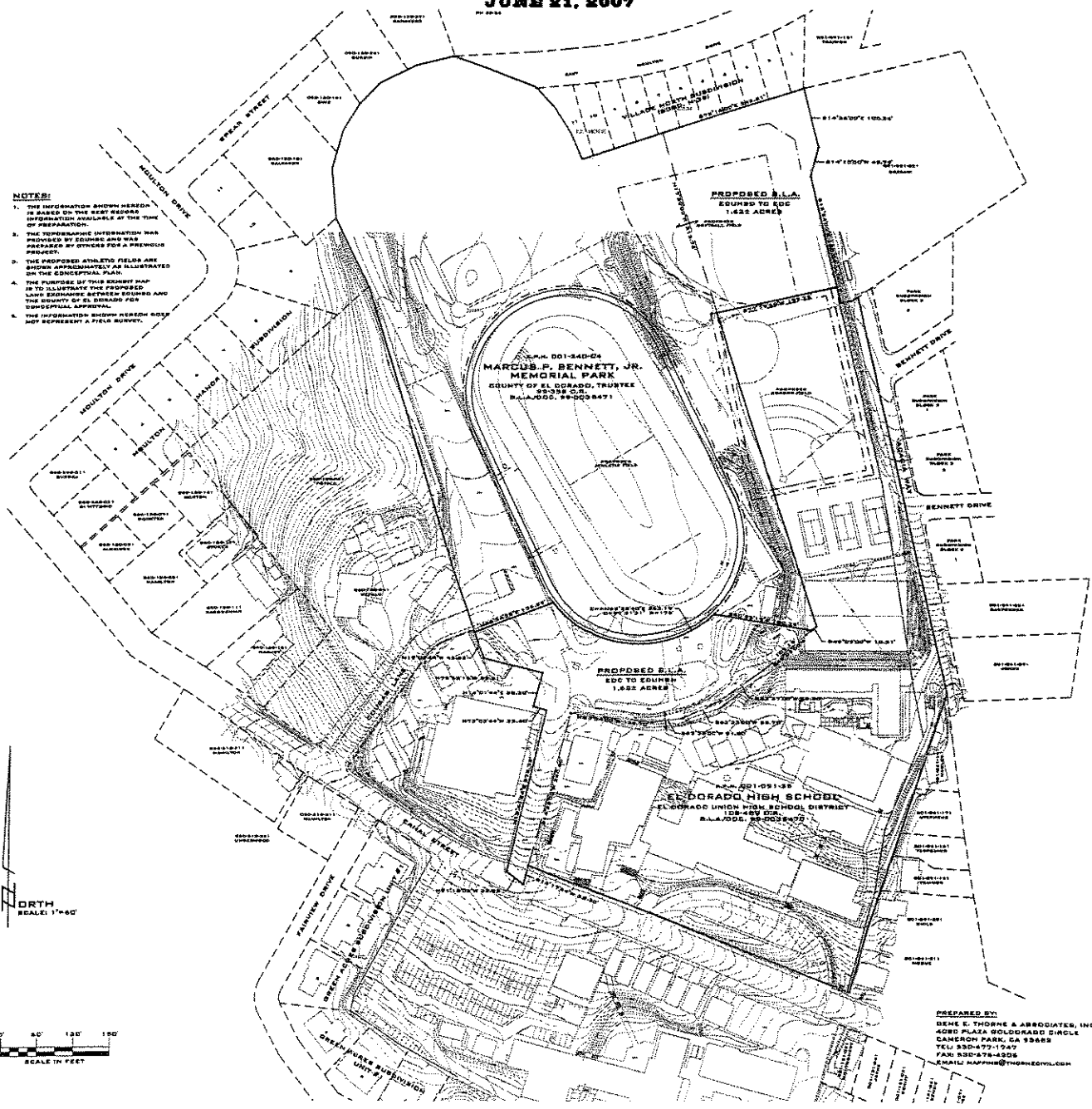
BOUNDARY LINE ADJUSTMENT

EL DORADO UNION HIGH SCHOOL DISTRICT-COUNTY OF EL DORADO

JUNE 21, 2007

NOTES:

1. THE INFORMATION SHOWN HEREIN IS BASED ON THE BEST AVAILABLE INFORMATION AVAILABLE AT THE TIME OF PREPARATION.
2. THE TOPOGRAPHIC INFORMATION WAS PROVIDED BY EDWARDS AND WAS PREPARED BY OTHERS FOR A PREVIOUS PROJECT.
3. THE PROPOSED ATHLETIC FIELDS ARE SHOWN APPROXIMATELY AS ILLUSTRATED ON THE CONCEPTUAL PLAN.
4. THE PURPOSE OF THIS EXHIBIT MAP IS TO ILLUSTRATE THE PROPOSED LAND EXCHANGE BETWEEN EDWARDS AND THE COUNTY OF EL DORADO FOR CONCEPTUAL APPROVAL.
5. THE INFORMATION SHOWN HEREIN DOES NOT REPRESENT A FIELD SURVEY.



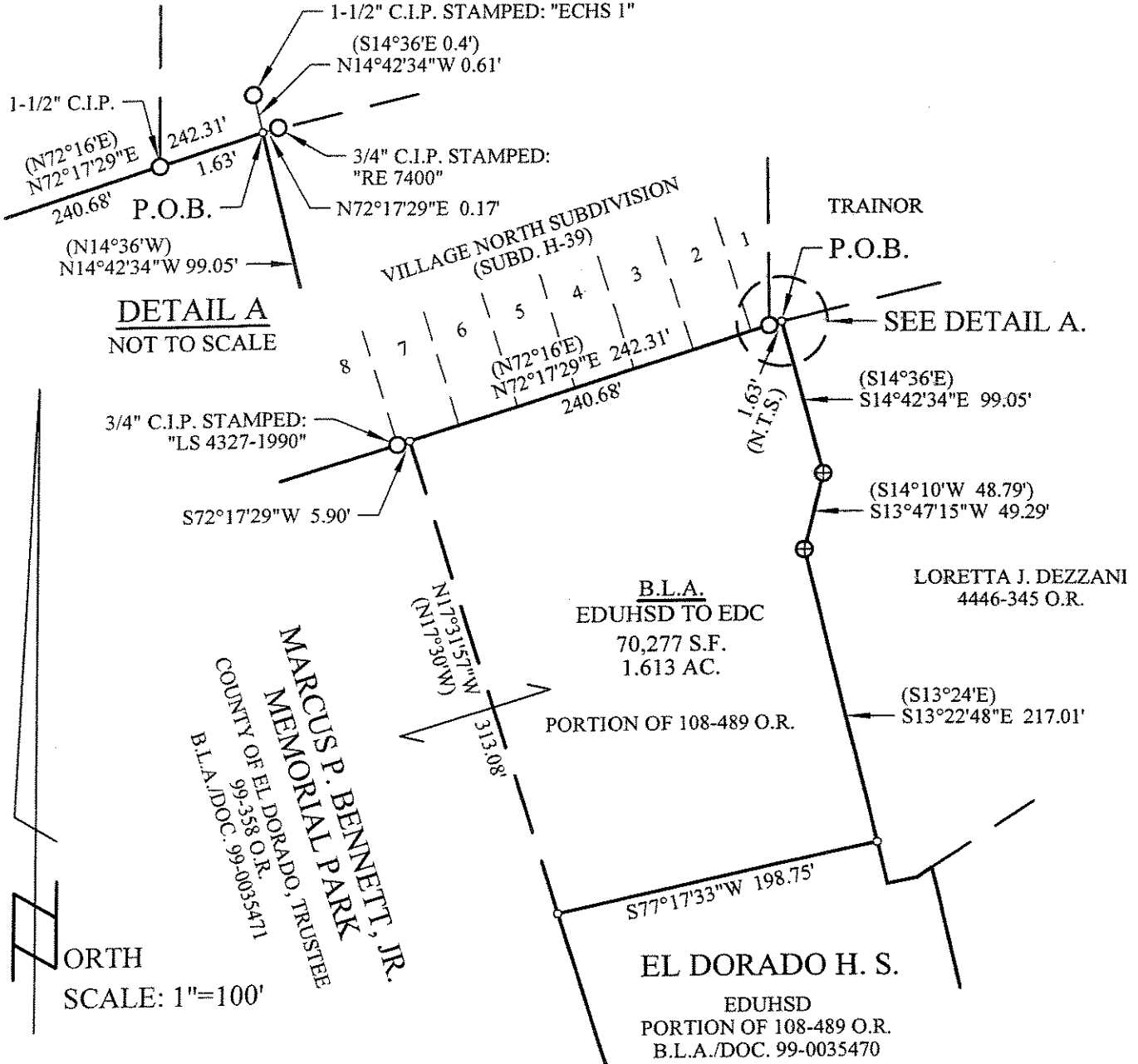
PREPARED BY:
 GENE E. THORNE & ASSOCIATES, INC.
 4085 PLAZA BOULEVARD, SUITE 200
 CAMERON PARK, CA 93685
 TEL: 936-777-1747
 FAX: 936-778-4206
 EMAIL: GTHORNE@THORNEEVA.COM

EXHIBIT B-1

BOUNDARY LINE ADJUSTMENT
EDUHSD to EDC

A PORTION LOTS 5 & 6 OF SECTION 7, T. 10 N., R. 11 E., M.D.M.
CITY OF PLACERVILLE, COUNTY OF EL DORADO, STATE OF CALIFORNIA

GENE E. THORNE & ASSOCIATES, INC.



DETAIL A
NOT TO SCALE

ORTH
SCALE: 1"=100'

LEGEND:

- COMPUTATION POINT
- MONUMENT AS SHOWN
- ⊕ 3/4" C.I.P. STAMPED: "LS 3012-1976"
- () RECORD DATA
- EDC EL DORADO COUNTY
- EDUHSD EL DORADO UNION HIGH SCHOOL DISTRICT

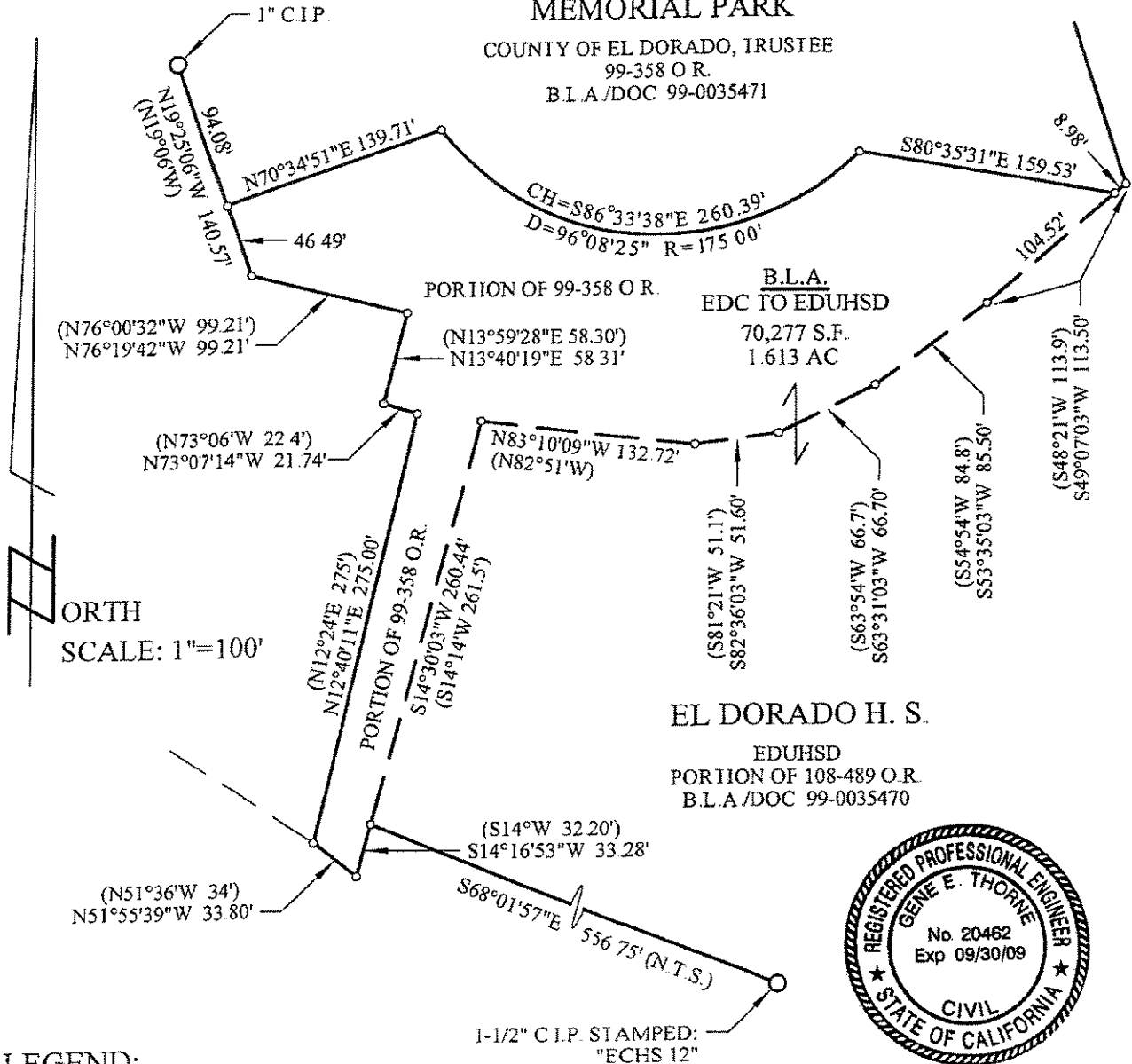


Gene E. Thorne
GENE E. THORNE, RCE 20462
REG. EXP. DATE: 09/30/09

EXHIBIT B-2
BOUNDARY LINE ADJUSTMENT
EDC to EDUHSD
A PORTION LOTS 2 & 3 OF SECTION 7, T. 10 N., R. 11 E., M.D.M.
CITY OF PLACERVILLE, COUNTY OF EL DORADO, STATE OF CALIFORNIA
GENE E. THORNE & ASSOCIATES, INC.

MARCUS P. BENNETT, JR.
MEMORIAL PARK

COUNTY OF EL DORADO, TRUSTEE
 99-358 O.R.
 B.L.A./DOC 99-0035471



ORTH
 SCALE: 1"=100'

LEGEND:

- COMPUTATION POINT
- MONUMENT AS SHOWN
- () RECORD DATA
- EDC EL DORADO COUNTY
- EDUHSD EL DORADO UNION HIGH SCHOOL DISTRICT

1-1/2" C.I.P. STAMPED:
 "ECHS 12"

EL DORADO H. S.

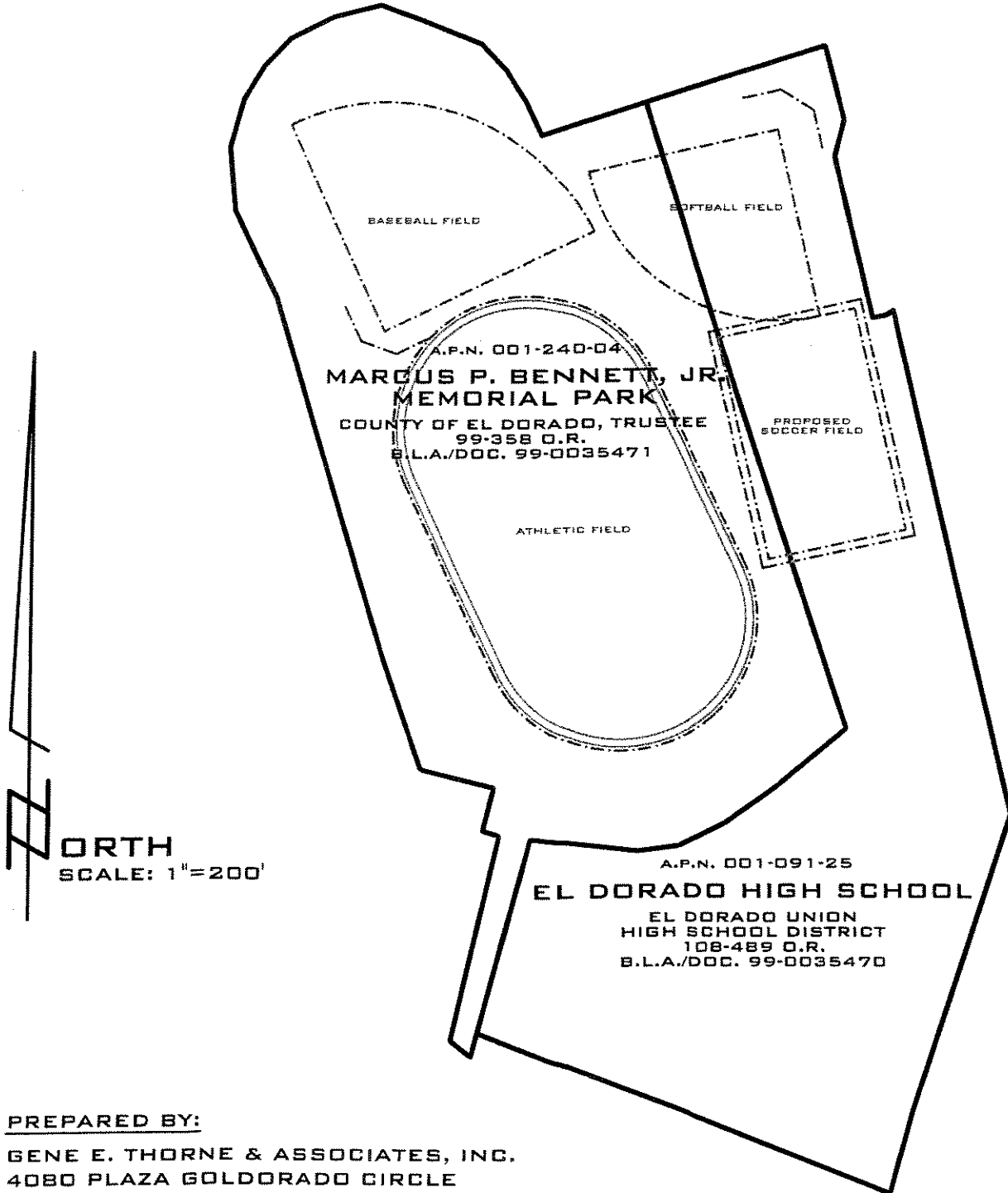
EDUHSD
 PORTION OF 108-489 O.R.
 B.L.A./DOC 99-0035470



GENE E. THORNE, RCE 20462

REG. EXP DATE: 09/30/09

EXISTING BOUNDARIES
E.D.U.H.S.D.-COUNTY OF EL DORADO
OCTOBER 2007



ORTH
SCALE: 1"=200'

PREPARED BY:
GENE E. THORNE & ASSOCIATES, INC.
4080 PLAZA GOLDORADO CIRCLE
CAMERON PARK, CA 95682
TEL: 530-677-1747
FAX: 530-676-4205
EMAIL: MAPPING@THORNECIVIL.COM

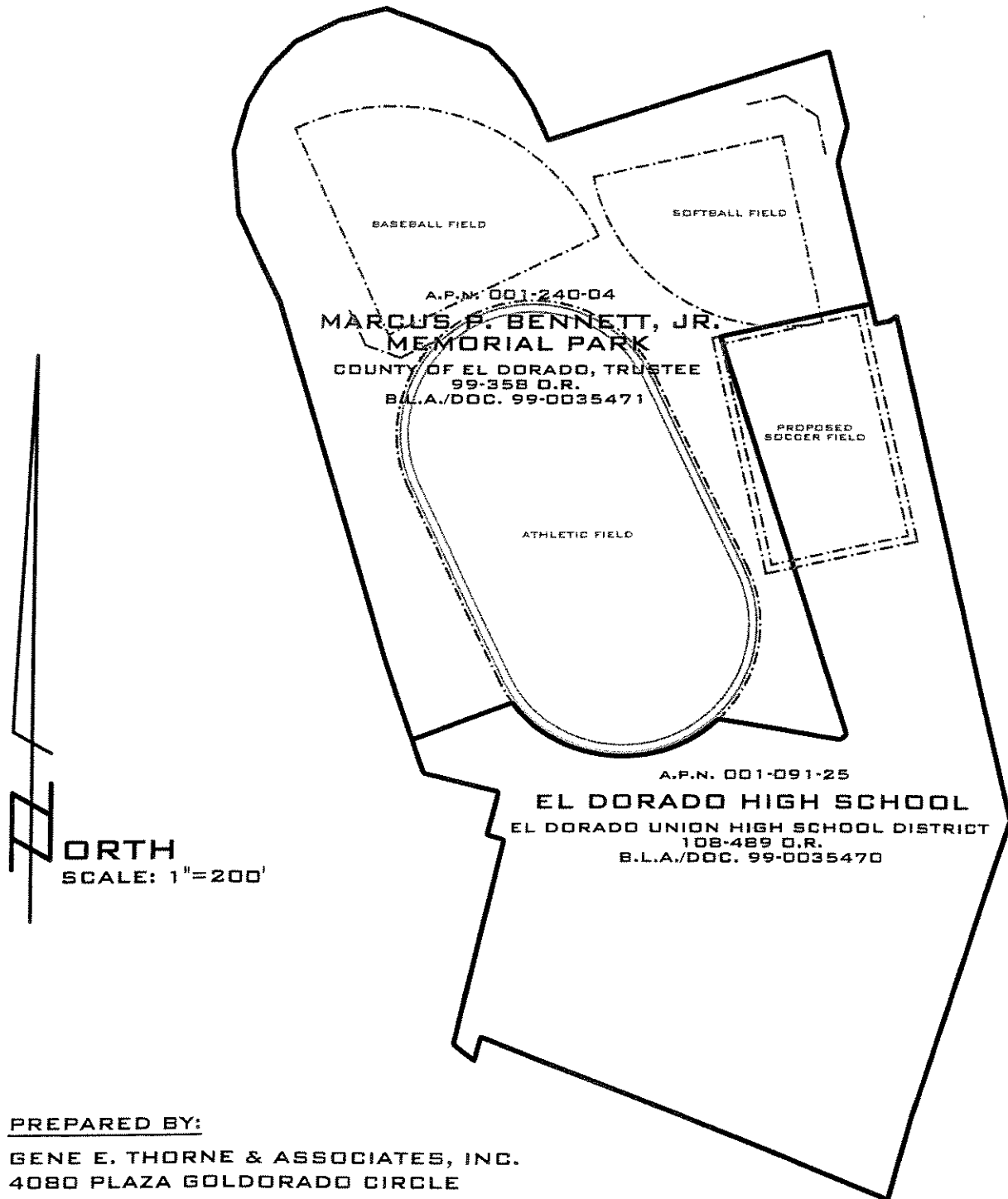
A.P.N. 001-240-04
MARCUS P. BENNETT, JR.
MEMORIAL PARK
COUNTY OF EL DORADO, TRUSTEE
99-358 O.R.
B.L.A./DOC. 99-0035471

A.P.N. 001-091-25
EL DORADO HIGH SCHOOL
EL DORADO UNION
HIGH SCHOOL DISTRICT
108-489 O.R.
B.L.A./DOC. 99-0035470

BOUNDARY LINE ADJUSTMENT

E.D.U.H.S.D.-COUNTY OF EL DORADO

OCTOBER 2007



PREPARED BY:

GENE E. THORNE & ASSOCIATES, INC.
4080 PLAZA GOLDORADO CIRCLE
CAMERON PARK, CA 95682
TEL: 530-677-1747
FAX: 530-676-4205
EMAIL: MAPPING@THORNECIVIL.COM