

DEPARTMENT OF TRANSPORTATION  
COUNTY OF EL DORADO, CA

PROJECT PLANS FOR THE CONSTRUCTION OF  
**CONTRACT OVERLAY—NORTH UPPER  
TRUCKEE ROAD (2 MILES)**

IN THE COUNTY OF EL DORADO, DISTRICT 5  
WITHIN THE PORTIONS OF THE SUBDIVISIONS TAHOE PARADISE UNITS 19, 20, & 31,  
SECTIONS 19, 30, & 31, TOWNSHIP 12N, AND RANGE 18E

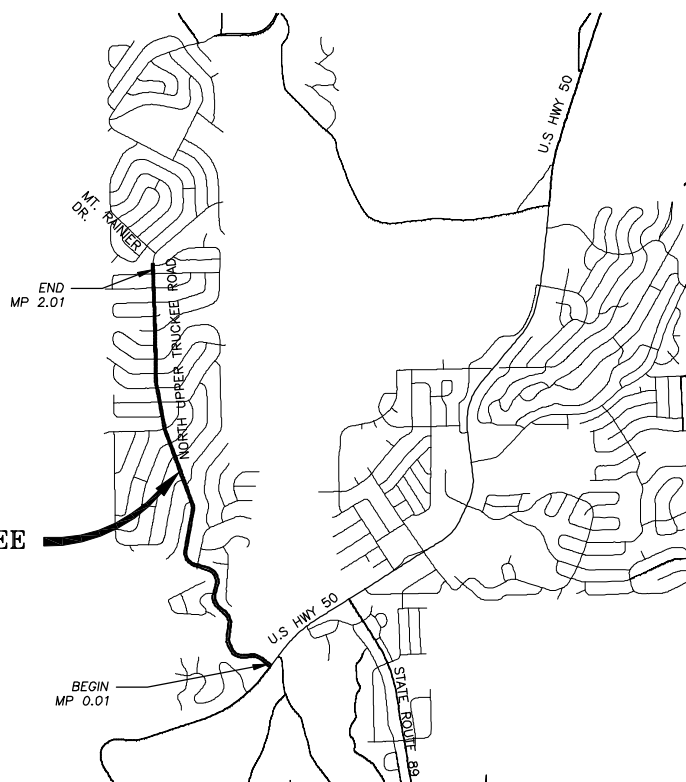
To be supplemented with Standard Plans and Specifications dated May 2006, including the  
amendments to the May 2006 Standard Specifications, of the California Department of  
Transportation, unless otherwise noted.

INDEX OF SHEETS

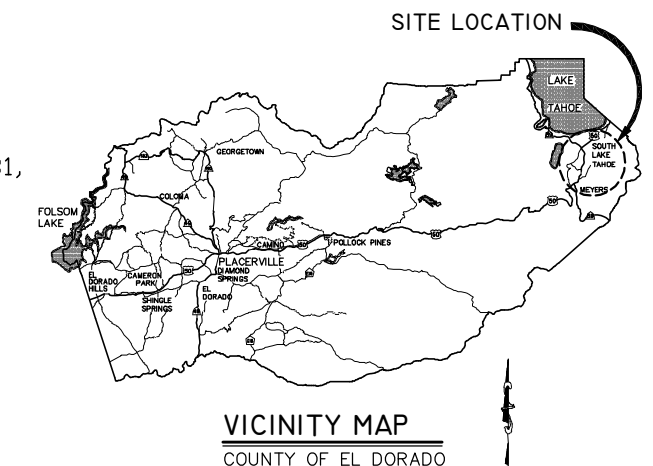
SHEET NUMBER	SHEET NAME	TITLE
1	TITLE	TITLE SHEET
2	ii	GENERAL NOTES, ABBREVIATIONS, AND LEGEND
3	P-1	AC OVERLAY, COLD PLANING, & CURB REMOVAL PLAN STA 00+00.00 TO 105+56.12
4	D-1	DETAILS
5	D-2	DETAILS
6	U-1	UTILITY PLAN

CONTRACTOR'S LICENSE CLASSIFICATION: Bidders shall be properly licensed to perform the Work pursuant to the State Contractor's License Law (Business and Professions Code section 7000 et seq.) and shall possess a CLASS A LICENSE or equivalent combination of Classes required by the categories and type of Work included in the Contract Documents and Plans at the time bids are submitted, and shall maintain a valid license through completion and acceptance of the Work including guarantee and warranty period. Failure of the successful Bidder to obtain proper and adequate licensing for an award of the Contract shall constitute a failure to execute the Contract, and shall result in forfeiture of the Bidders security.

REVISIONS		
MARK	DATE	BY



LOCATION MAP  
SCALE: 1" = 2000'



VICINITY MAP  
COUNTY OF EL DORADO

FUNDING AGENCY  
PROPOSITION 1B LOCAL STREETS AND ROADS



6/20/2011  
DATE  
SUBMITTED BY: STEVE P. KOOYMAN, P.E.  
SENIOR CIVIL ENGINEER  
STATE OF CALIFORNIA No. 55757

BOARD OF SUPERVISORS

I	JOHN R. KNIGHT
II	RAYMOND J. NUTTING
III	JAMES SWEENEY
IV	RON V. BRIGGS
V	NORMA SANTIAGO

COUNTY OF EL DORADO  
DEPARTMENT OF  
TRANSPORTATION  
5301 573-7800 924 B (530) 821-5900  
EMERALD BAY ROAD 2880 FAIRLAKE CT  
SOUTH LAKE TAHOE, CA PLACERVILLE, CA  
96150 95667

ADOPTED AND APPROVED BY:

DATE	DATE	DATE
RAYMOND J. NUTTING CHAIR, EL DORADO COUNTY BOARD OF SUPERVISORS		
APPROVED BY:		
JAMES W. WARE, RCE NO. 61026 DIRECTOR, EL DORADO COUNTY DEPARTMENT OF TRANSPORTATION		
CRAIG D. MCKIBBIN, RCE NO. 35102 DEPUTY DIRECTOR OF ENGINEERING, TRANSPORTATION PLANNING & LAND DEVELOPMENT, EL DORADO COUNTY DEPARTMENT OF TRANSPORTATION		

CONTRACT NO. PW 11-30581 CIP NO. 72178  
CONTRACT OVERLAY-  
NORTH UPPER TRUCKEE ROAD  
(2 MILES)  
TITLE SHEET  
SHEET 1 OF 6

Drawing name: S:\CIVIL 3D PROJECTS\11-30581\Engineering\plan\NU1\_01\_title.dwg

GENERAL NOTES

- ALL IMPROVEMENTS SHALL BE ACCOMPLISHED UNDER THE APPROVAL, INSPECTION, AND TO THE SATISFACTION OF THE EL DORADO COUNTY DEPARTMENT OF TRANSPORTATION (DOT). IMPROVEMENT CONSTRUCTION SHALL COMPLY WITH THESE PLANS AND THE MAY 2006 CALTRANS STANDARD PLANS, UNLESS NOTED OTHERWISE. ALL REFERENCES TO THE "STANDARD SPECIFICATIONS" SHALL MEAN THE STATE OF CALIFORNIA, DEPARTMENT OF TRANSPORTATION (CALTRANS) STANDARD SPECIFICATIONS, MAY 2006, INCLUDING THE AMENDMENTS TO THE MAY 2006 STANDARD SPECIFICATIONS. CONSTRUCTION NOT SPECIFIED ON THESE PLANS OR IN SPECIFIC EL DORADO COUNTY (COUNTY) ORDINANCES SHALL CONFORM TO THE REQUIREMENTS OF THE STANDARD SPECIFICATIONS. THE CONTRACTOR IS OBLIGATED TO BE FAMILIAR WITH APPLICABLE SECTIONS OF THE STANDARD SPECIFICATIONS NOT DISCUSSED IN THE GENERAL NOTES. THE CONTRACT SPECIAL PROVISIONS SHALL SUPERSEDE THOSE OF THE STANDARD SPECIFICATIONS WHERE DISCREPANCIES OCCUR.
- CONSTRUCTION HOURS SHALL BE WEEKDAYS BETWEEN 8:00 A.M. AND 6:30 P.M. UNLESS PRIOR APPROVAL IS RECEIVED FROM THE COUNTY DOT.
- THE LOCATIONS AND EXTENT OF EXISTING UNDERGROUND UTILITIES IN THE WORK AREA AS SHOWN ARE APPROXIMATE AND ARE NOT NECESSARILY COMPLETE. A REASONABLE EFFORT HAS BEEN MADE TO LOCATE AND DELINEATE EXISTING UTILITIES BASED UPON AVAILABLE RECORDS. THE CONTRACTOR SHALL DETERMINE THE TYPE, LOCATION, SIZE, AND/OR DEPTH OF THE EXISTING UTILITIES WITHIN THE WORK AREA BEFORE COMMENCING WORK. THE CONTRACTOR OR ANY SUBCONTRACTOR FOR THIS CONTRACT SHALL BE FULLY RESPONSIBLE FOR ANY AND ALL DAMAGES WHICH MIGHT BE OCCASIONED BY THE FAILURE TO EXACTLY LOCATE AND PRESERVE ANY AND ALL UNDERGROUND UTILITIES. THE CONTRACTOR SHALL CONTACT UNDERGROUND SERVICE ALERT AT (800) 642-2444 AT LEAST 48 HOURS PRIOR TO ANY CONSTRUCTION. SEE SPECIAL PROVISIONS FOR CONTRACTOR NOTIFICATION REQUIREMENTS. THE CONTRACTOR SHALL ASSUME COMPLETE RESPONSIBILITY FOR DAMAGED UTILITIES.
- UNLESS NOTED OTHERWISE ON THE PLANS, THE CONTRACTOR SHALL BE RESPONSIBLE FOR THE PROTECTION OF ALL EXISTING SURVEY MONUMENTS AND OTHER SURVEY MARKERS DURING CONSTRUCTION.
- THE CONTRACTOR SHALL PROVIDE, PLACE, AND MAINTAIN ALL LIGHTS, SIGNS, BARRICADES, FLAG PERSONS, PILOT CAR, OR OTHER DEVICES NECESSARY TO CONTROL TRAFFIC THROUGH THE CONSTRUCTION AREA AND FOR PUBLIC SAFETY IN ACCORDANCE WITH THESE PLANS, THE STANDARD SPECIFICATIONS, AND THE CALIFORNIA MANUAL ON UNIFORM TRAFFIC CONTROL DEVICES (MUTCD).
- THE CONTRACTOR AGREES TO ASSUME SOLE AND COMPLETE RESPONSIBILITY FOR JOB SITE CONDITIONS DURING THE COURSE OF CONSTRUCTION OF THIS PROJECT, INCLUDING SAFETY OF ALL PERSONS AND PROPERTY, AND FURTHER AGREES THAT THIS REQUIREMENT SHALL APPLY CONTINUOUSLY AND NOT BE LIMITED TO NORMAL WORKING HOURS IN ACCORDANCE WITH THE PROVISIONS OUTLINED BY THE PROJECT CONTRACT AND STANDARD SPECIFICATIONS.
- THERE SHALL BE NO GRADING OR LAND DISTURBANCE PERFORMED WITH RESPECT TO THE PROJECT BETWEEN OCTOBER 15 AND MAY 1 UNLESS PROPER APPROVALS ARE OBTAINED FROM THE TAHOE REGIONAL PLANNING AGENCY (TRPA), AS PROVIDED IN THE LIMITED EXEMPTION DESCRIBED IN SUBSECTION 4.2.A. OF THE TRPA CODE OF ORDINANCES. APPROVALS FOR GRADING BETWEEN OCTOBER 15 AND MAY 1 MUST ALSO BE OBTAINED FROM THE REGIONAL WATER QUALITY CONTROL BOARD, LAHONTAN. IF REQUIRED, THE COUNTY SHALL OBTAIN THESE APPROVALS.
- THE CONTRACTOR SHALL MAINTAIN A SET OF PLANS ON THE JOB SHOWING "AS-CONSTRUCTED" CHANGES MADE TO DATE. UPON COMPLETION OF THE PROJECT, THE CONTRACTOR SHALL SUPPLY TO THE COUNTY A SET OF PLANS, MARKED UP TO THE SATISFACTION OF THE COUNTY, REFLECTING THE AS-CONSTRUCTED MODIFICATIONS.
- ALL CONTROL STATIONING AND DATA DIMENSIONING ARE REFERENCED TO THE CENTERLINE OF THE FACILITY SHOWN UNLESS OTHERWISE NOTED. STATIONING AND DIMENSIONING FOR THE CONCRETE CURB AND GUTTER IS ALONG THE TOP BACK OF CURB.
- AT NO TIME SHALL THE CONTRACTOR UNDERTAKE TO CLOSE OFF ANY EXISTING UTILITY LINES OR OPEN VALVES OR TAKE ANY OTHER ACTION WHICH WOULD AFFECT THE OPERATION OF EXISTING WATER OR SEWER SYSTEMS WITHOUT PRIOR APPROVAL FROM THE SOUTH TAHOE PUBLIC UTILITY DISTRICT (STPUD). APPROVAL SHALL BE REQUESTED AT LEAST 48 HOURS IN ADVANCE OF THE TIME THAT THE INTERRUPTION OF THE EXISTING SYSTEM IS REQUIRED. ANY INTERRUPTION OF SERVICE TO ACTIVE WATER OR SEWER SERVICES, INCLUDING FIRE HYDRANTS, WHETHER INTENTIONAL OR NOT, MUST BE KEPT TO A MINIMUM TIME PERIOD. IF SERVICE TO BUILDINGS IS TO BE OFF FOR MORE THAN FOUR HOURS, THE CONTRACTOR MUST ADVISE STPUD.
- THE CONTRACTOR SHALL BE REQUIRED TO PERFORM PREVENTIVE DUST CONTROL MEASURES TO ENSURE THAT DUST RESULTING FROM THE CONTRACTOR'S PERFORMANCE OF THE WORK IS CONTROLLED IN CONFORMANCE WITH THE PROVISIONS OF SECTION 7, "LEGAL RELATIONS AND RESPONSIBILITY," OF THE STANDARD SPECIFICATIONS, COUNTY, AND LOCAL ORDINANCES. SEE SPECIAL PROVISIONS REGARDING SWEEPING REQUIREMENTS.
- THE CONTRACTOR SHALL BE RESPONSIBLE FOR IMPLEMENTING ALL TEMPORARY EROSION CONTROL MEASURES. THE EROSION CONTROL MEASURES SHALL BE IN ACCORDANCE WITH THE TRPA "HANDBOOK OF BEST MANAGEMENT PRACTICES" AND THESE PLANS. THE DOT SHALL CONTACT TRPA PRIOR TO THE COMMENCEMENT OF WORK FOR A PRE-GRADING INSPECTION OF THE INSTALLED TEMPORARY EROSION CONTROL FACILITIES. THE CONTRACTOR SHALL BE RESPONSIBLE FOR THE MAINTENANCE AND PERFORMANCE OF THE TEMPORARY EROSION CONTROL MEASURES THROUGHOUT THE DURATION OF THE PROJECT.
- ALL REVEGETATION SHOWN ON THE PLANS IS TO BE COMPLETED BY OTHERS, UNLESS NOTED OTHERWISE.
- THE CONTRACTOR SHALL USE ONLY DESIGNATED SPECIFIC SITES FOR STORAGE OF EQUIPMENT AND MATERIALS AS DETERMINED BY ENGINEER IN FIELD. THE CONTRACTOR SHALL BE RESPONSIBLE FOR THE SECURITY OF ALL EQUIPMENT AND MATERIALS.
- IT IS THE RESPONSIBILITY OF THE CONTRACTOR AND HIS SUBCONTRACTOR(S) TO EXAMINE THE PROJECT SITE PRIOR TO THE OPENING OF BID PROPOSALS. THE CONTRACTOR SHALL BECOME FAMILIAR WITH THE CONDITIONS UNDER WHICH THE WORK IS TO BE PERFORMED, SUCH AS THE NATURE AND LOCATION OF THE WORK AND THE GENERAL AND LOCAL CONDITIONS, PARTICULARLY THOSE AFFECTING THE AVAILABILITY OF TRANSPORTATION, THE DISPOSAL, HANDLING, AND STORAGE OF MATERIALS, AVAILABILITY OF LABOR, WATER, ELECTRICITY, ROADS, THE UNCERTAINTIES OF WEATHER, THE CONDITIONS OF THE GROUND, SURFACE AND SUBSURFACE MATERIALS, THE EQUIPMENT AND FACILITIES NEEDED PRIMARILY FOR AND DURING THE PERFORMANCE OF THE WORK, AND THE COSTS THEREOF. ANY FAILURE BY THE CONTRACTOR AND SUBCONTRACTOR(S) TO ACQUAINT HIMSELF WITH ALL THE AVAILABLE INFORMATION WILL NOT RELIEVE HIM FROM RESPONSIBILITY FOR PROPERLY ESTIMATING THE DIFFICULTY AND COST OF SUCCESSFULLY PERFORMING THE WORK.
- ELEVATIONS SHOWN ON THE PLANS FOR PIPE INVERTS, TOPS OF GRATES, RIMS, CURBS, ETC., ARE BASED UPON THE TOPOGRAPHIC INFORMATION SHOWN ON THE PLANS. THE CONTRACTOR SHALL VERIFY ALL NECESSARY SURFACE ELEVATIONS IN THE FIELD AND NOTIFY THE DOT OF ANY DISCREPANCIES, WHICH MIGHT AFFECT PROPER OPERATION OF THE NEW FACILITIES BEFORE BREAKING GROUND AND PRIOR TO FACILITY INSTALLATION. THE DOT SHALL BE CONTACTED IN THE EVENT ELEVATIONS ARE INCORRECT SO THAT THE PROPER ADJUSTMENTS CAN BE MADE PRIOR TO THE INSTALLATION OF THE FACILITIES.
- THE CONTRACTOR SHALL OBTAIN AT HIS OWN EXPENSE ALL PERMITS, LICENSES, INSURANCE POLICIES, ETC., NOT ALREADY OBTAINED BY DOT, AS MAY BE NECESSARY TO COMPLY WITH STATE AND LOCAL LAWS ASSOCIATED WITH THE PERFORMANCE OF THE WORK. SEE SPECIAL PROVISIONS.
- THE CONTRACTOR IS RESPONSIBLE TO REVIEW THE CONTRACT DOCUMENTS FOR ALL SUBMITTALS REQUIRED FOR COUNTY REVIEW AND ACCEPTANCE.
- THE COUNTY WILL FURNISH THE CONSTRUCTION STAKING TO THE CONTRACTOR FOR THE CURB OPENING AND CURB REMOVAL.

ABBREVIATIONS

NOTE: LOWER CASE TEXT WITHIN PLAN SET INDICATES EXISTING

△	DELTA = DEFLECTION ANGLE	LP	LOW POINT
A	ASPEN	LT	LEFT
AB	AGGREGATE BASE	LTD	LAKE TAHOE DATUM
ABAND	ABANDONED	MISC	MISCELLANEOUS
AC	ASPHALT CONCRETE	MM	MILE MARKER
ACS	ASPHALT CONCRETE SWALE	MOC	MID POINT ON CURVE
ACP	ASBESTOS CEMENT PIPE	N	NORTH
AP	ANGLE POINT	NIC	NOT IN CONTRACT
APN	ASSESSOR'S PARCEL NUMBER	NTS	NOT TO SCALE
AV/AR	AIR VACUUM/AIR RELEASE VALVE	OAE	OR APPROVED EQUAL
BC	BEGIN CURVE	OC	ON CENTER
BCR	BEGIN CURB RETURN	OD	OUTSIDE DIAMETER
BGN	BEGIN	OH	OVERHEAD
BLVD	BOULEVARD	O/S	OVERSIDE
BO	BLOW OFF	P	PINE
BR	BOTTOM OF ROCK	PC	POINT OF BEGINNING OF CURVE
BVCE	BEGIN VERTICAL CURVE ELEVATION	PCC	POINT OF COMPOUND VERTICAL CURVE ELEVATION
BVCS	BEGIN VERTICAL CURVE STATION	PERF	PERFORATED
C	CEDAR	PL	PROPERTY LINE
C STA	CUL-DE-SAC STATIONING	POCC	POINT OF COMPOUND CURVE
CALC'S	CALCULATIONS	POCVCE	POINT OF COMPOUND VERTICAL CURVE ELEVATION
CC	CENTER TO CENTER	POCVCS	POINT OF COMPOUND VERTICAL CURVE STATION
CF	CUBIC FEET OR CURB FACE	POR	PORTION
CHD	CHORD DIRECTION	PORVCE	POINT OF REVERSE VERTICAL CURVE ELEVATION
CIR	CIRCLE	PORVCS	POINT OF REVERSE VERTICAL CURVE STATION
C	CENTERLINE	PP	POWER/UTILITY POLE
CL	CLASS OR CENTERLINE	PRC	POINT OF REVERSE CURVE
CLF	CONSTRUCTION LIMIT FENCE	PROP	PROPOSED
CLR	CLEAR	PT	POINT OR POINT OF TANGENCY
CO	CURB OPENING	PUE	PUBLIC UTILITY EASEMENT
CO.	COUNTY	PVC	POLYVINYL CHLORIDE
CONC	CONCRETE	PVE	POINT OF VERTICAL INTERSECTION ELEVATION
CONST	CONSTRUCT	R	RADIUS
CMP	CORRUGATED METAL PIPE	R&R	REMOVE & REPLACE
CT	CALTRANS OR COURT	RC	RELATIVE COMPACTION
CTC	CALIFORNIA TAHOE CONSERVANCY	RCP	REINFORCED CONCRETE PIPE
CY	CUBIC YARD	RD	ROAD
C&G	CURB AND GUTTER	REF	REFERENCE
D	DEPTH	REQ'D	REQUIRED
DB	DRAIN BASIN	RLC	ROCK-LINED CHANNEL
DBL	DOUBLE	ROW	RIGHT-OF-WAY
DET	DETAIL	RR	RAILROAD
DI	DRAINAGE INLET OR DUCTILE IRON	RSP	ROCK SLOPE PROTECTION
DIA OR Ø	DIAMETER	RT	RIGHT
DISS	DISSIPATOR	S	SOUTH OR SANITARY SEWER
DR	DRIVE	SCO	SEWER CLEAN OUT
D/W	DRIVEWAY	SD	STORM DRAIN
E	EAST	SDMH	STORM DRAIN MANHOLE
EA	EACH	SF	SQUARE FEET
EC	END OF CURVE	SHT	SHEET
ECR	END OF CURB RETURN	SL	SLOPE LENGTH
EG	EXISTING GRADE	SLI	SLOPE LENGTH IN PAVEMENT
ELEV	ELEVATION	SLO	SLOPE LENGTH OUT OF PAVEMENT
ELEC	ELECTRIC	SMH	SEWER MANHOLE
EP	EDGE OF PAVEMENT	SP	SPECIAL PROVISIONS
ESMT	EASEMENT	ST	SEDIMENT TRAP OR STREET
EVCE	END VERTICAL CURVE ELEVATION	STA	STATION
EVCS	END VERTICAL CURVE STATION	STD	STANDARD
EX	EXISTING	STL	STEEL
F	FIR	SWPPP	STORM WATER POLLUTION PREVENTION PLAN
FES	FLARED END SECTION	STPUD	SOUTH TAHOE PUBLIC UTILITY DISTRICT
FF	FILTER FENCE	T	TELEPHONE
FG	FINISHED GRADE	TBC	TOP BACK OF CURB
FH	FIRE HYDRANT	TBD	TOP BACK OF DIKE
FL	FLOWLINE	TD	TOP OF DIKE
FM	FORCE MAIN	TBM	TEMPORARY BENCHMARK
FMMH	FORCE MAIN MANHOLE	TBR	TO BE REMOVED
FS	FINISH SURFACE	TG	TOP OF GRATE
G	GAS	TR	TOP OF ROCK
GA	GAUGE	TRANS	TRANSITION
GB	GRADE BREAK	TRPA	TAHOE REGIONAL PLANNING AGENCY
GLV	GRASS-LINED SWALE	TTL	TOTAL
GV	GAS VALVE	TW	TOP OF WALL
H	HORIZONTAL	TYP	TYPICAL
HDPE	HIGH DENSITY POLYETHYLENE	UG	UNDERGROUND
HP	HIGH POINT	UKN	UNKNOWN
ID	INSIDE DIAMETER	USFS	UNITED STATES FOREST SERVICE
IE	INVERT ELEVATION	V	VERTICAL
INST	INSTALL	W	WEST OR WATER
INTRXN	INTERSECTION	W/	WITH
L	LENGTH	W/O	WITHOUT
LC	LENGTH OF CHORD	WC	WILLOW CLUSTER
LF	LINEAR FEET	WV	WATER VALVE

LEGEND

EXISTING	PROPOSED
--- EXISTING EP	AC OVERLAY
- - - - STATE/COUNTY/PROPERTY LINE	ROLLED C&G
□ DRAINAGE INLET	⊗ X ⊗ DETAIL REF NUMBER SHEET NUMBER
-sd- STORM DRAIN	FF - CLF - FILTER FENCE OR CONSTRUCTION LIMIT FENCE
==== AC DIKE	➔ WEIGHTED FIBER ROLL OR GRAVEL-FILLED ROLL
==== RETAINING WALL	
----- CURB	
○ SEDIMENT TRAP	
⊗ ROCK	
⊗ ROCK LINED CHANNEL	
---g--- GAS LINE	
---g--- GAS VALVE	
---w--- WATER LINE	
---w--- WATER VALVE	
⊗ FIRE HYDRANT	
⊗ WATER SERVICE BOX (DOUBLE)	
⊗ WATER SERVICE BOX (SINGLE)	
---s--- SEWER LINE	
---s--- SEWER FLOW DIRECTION	
⊗ SEWER MAN HOLE	
⊗ SEWER CLEAN OUT	
⊗ TELEPHONE CLEAN OUT	

UTILITIES

CABLE TELEVISION	CHARTER COMMUNICATIONS, (775) 588-1077
NATURAL GAS	SOUTHWEST GAS, (530) 543-3225
ELECTRIC	NV ENERGY, (530) 541-6400
SEWER & WATER	SOUTH TAHOE PUD, (530) 544-6474
TELEPHONE	AT&T, (530) 888-2031
STORM DRAIN	EL DORADO COUNTY DOT, (530) 573-3180

DRAWING NAME: S:\0011\30 PROJECTS\21078\Engineering\mplan\WCT\_01.dwg

FOR REDUCED PLANS ORIGINAL SCALE IS IN INCHES

REVISION	NUMBER	DATE	DESCRIPTION	BY



PREPARED UNDER THE SUPERVISION OF:

*[Signature]*

REGISTERED CIVIL ENGINEER

DATE: 6/20/2011

DESIGNED: JTC

DRAWN: JTC

CHECKED: SPK

DATE: 6/20/2011

ROAD NUMBER: 114



EL DORADO COUNTY  
DEPARTMENT OF TRANSPORTATION

CONTRACT OVERLAY-NORTH UPPER TRUCKEE ROAD  
(2 MILES)  
GENERAL NOTES, ABBREVIATIONS, AND LEGEND

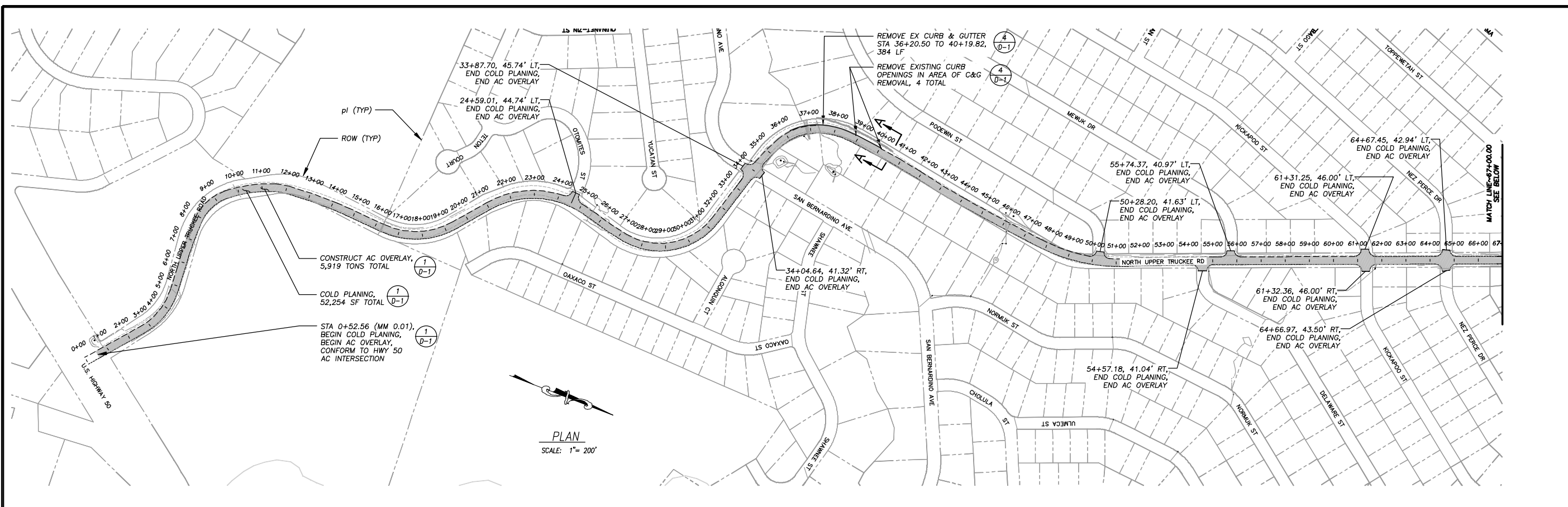
SHEET ii

2 OF 6

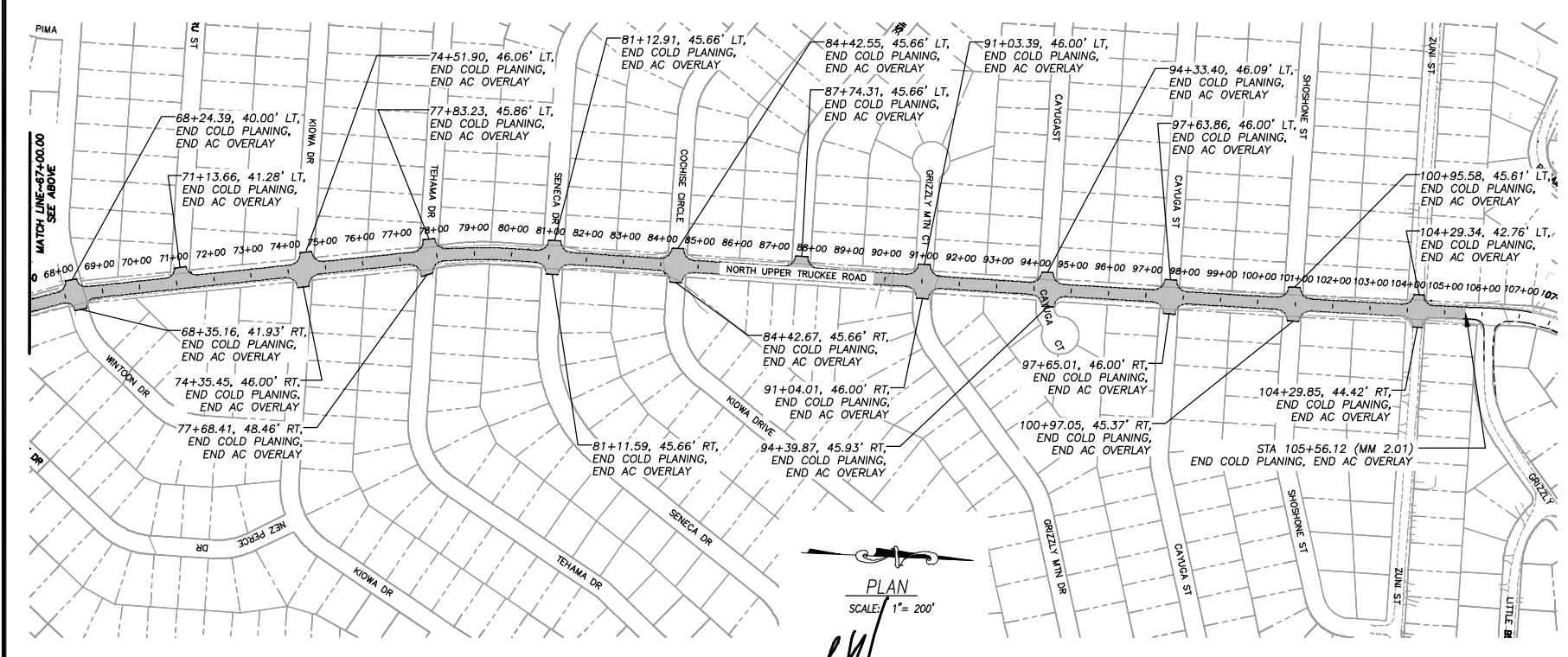
CONTRACT NO. PW 11-30581

CIP No. 72128

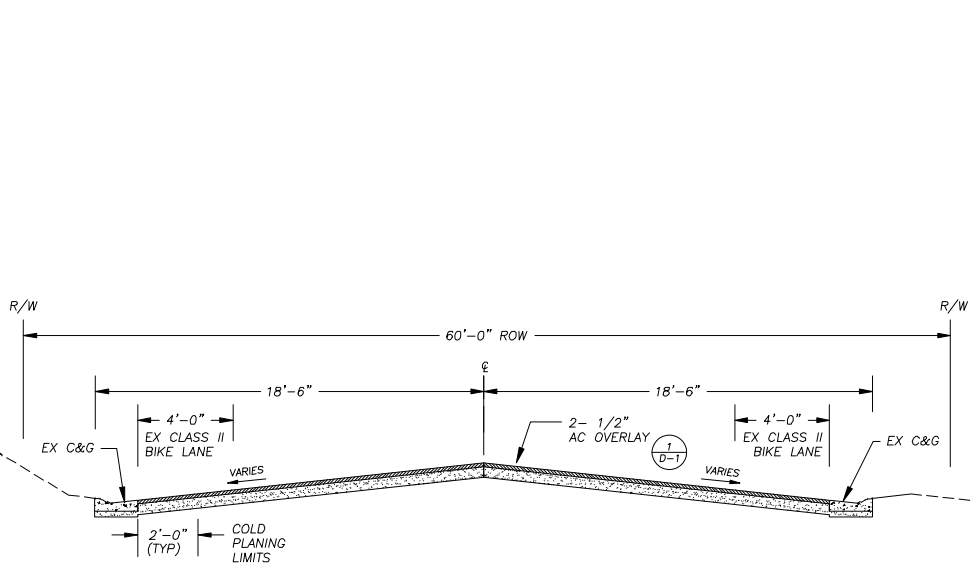
FOR REDUCED PLANS ORIGINAL SCALE IS IN INCHES



PLAN  
SCALE: 1" = 200'



PLAN  
SCALE: 1" = 200'



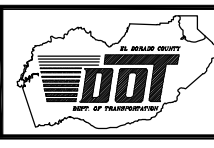
SECTION A-A  
SCALE: NTS

REVISION	NUMBER	DATE	DESCRIPTION	BY



PREPARED UNDER THE SUPERVISION OF:  
*[Signature]*  
REGISTERED CIVIL ENGINEER  
DATE: 6/20/2011

DESIGNED: JTC  
DRAWN: KIS  
CHECKED: SPK  
DATE: 6/2011  
ROAD NUMBER: 114

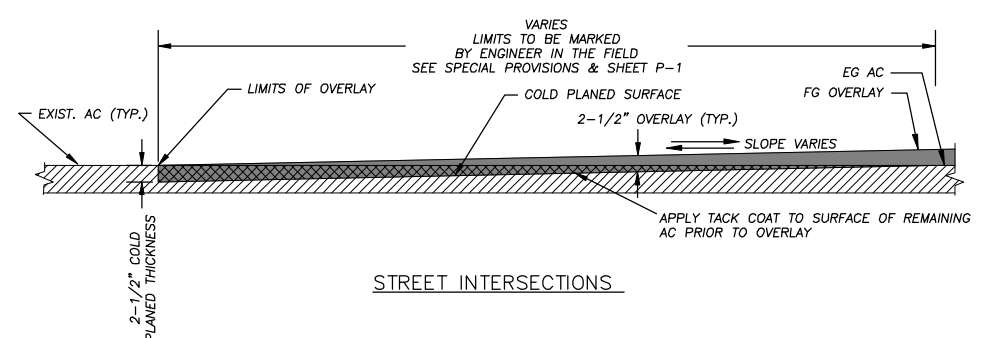


EL DORADO COUNTY  
DEPARTMENT OF TRANSPORTATION

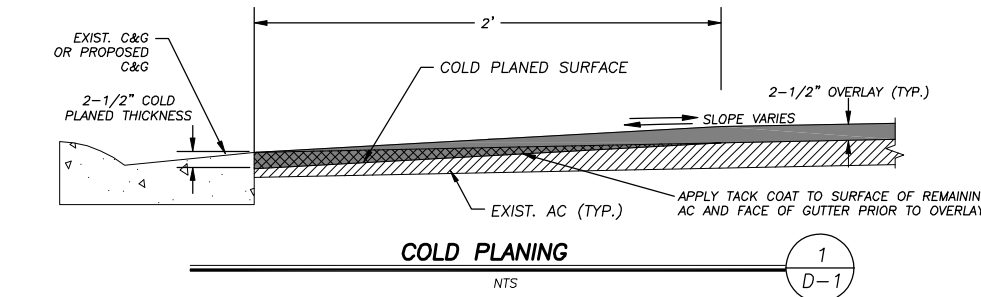
CONTRACT OVERLAY-NORTH UPPER TRUCKEE ROAD  
(2 MILES)  
AC OVERLAY, COLD PLANING, & CURB REMOVAL  
PLAN STA 00+00.00 TO 105+56.12

SHEET  
P-1  
3 of 6  
CONTRACT NO.  
PW 11-30581  
CIP No.  
72128

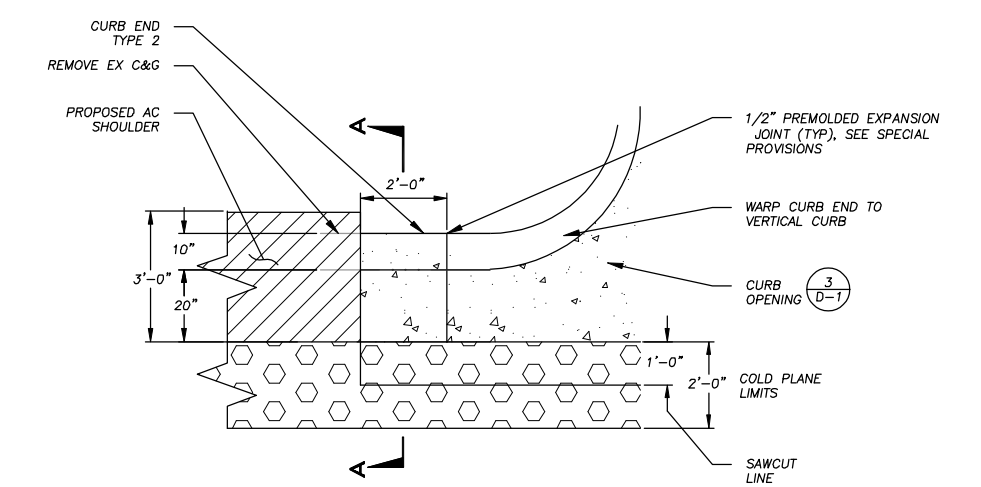
FOR REDUCED PLANS ORIGINAL SCALE IS IN INCHES



**STREET INTERSECTIONS**

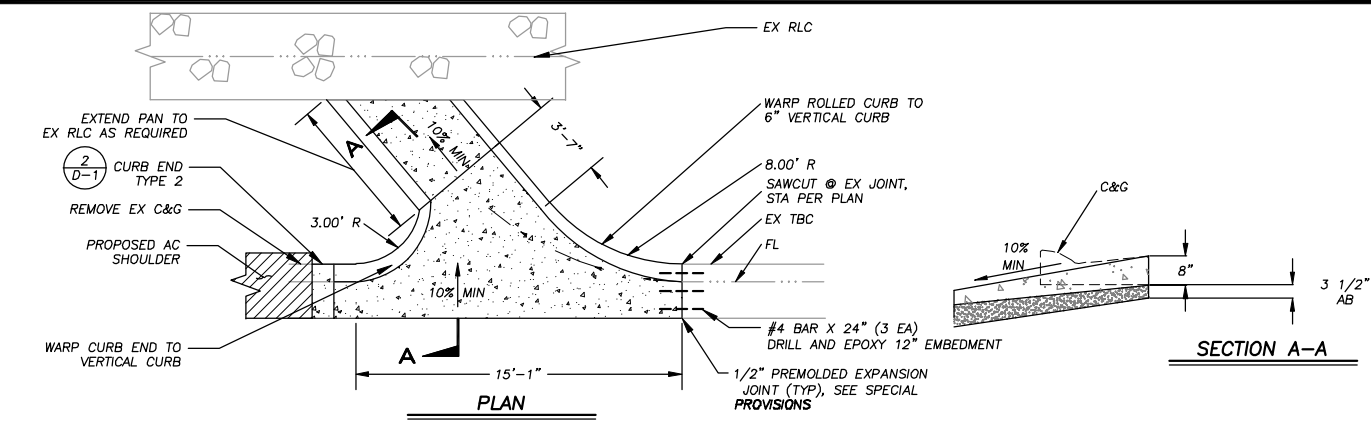


**COLD PLANING**

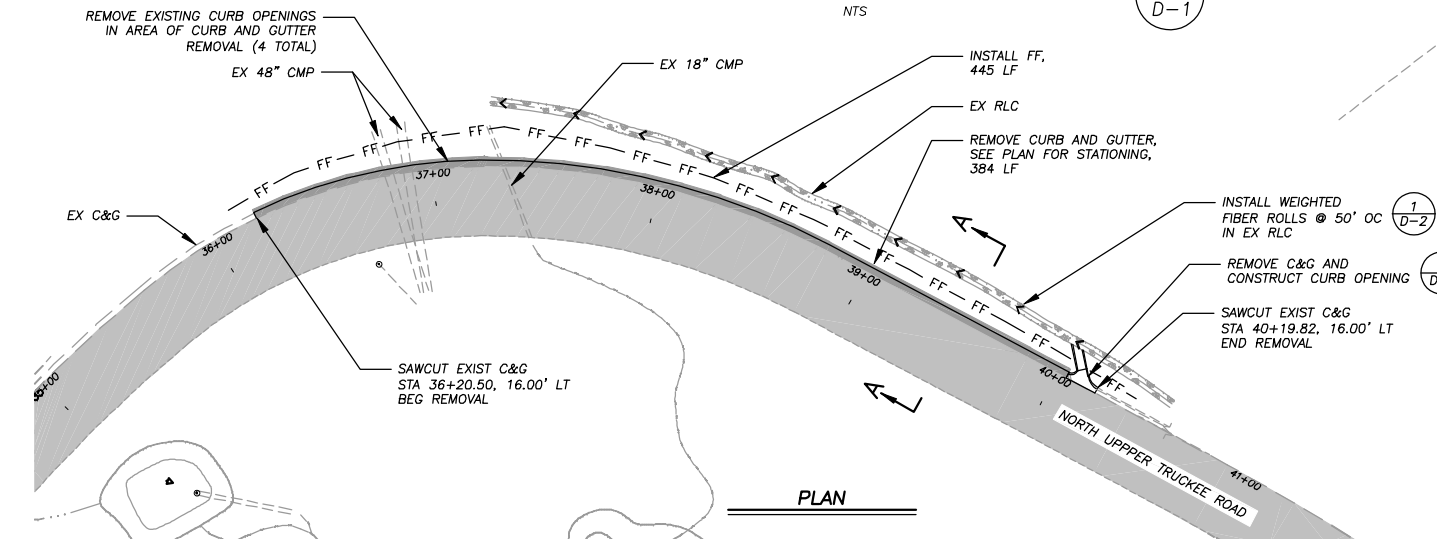


**CURB END TYPE 2**

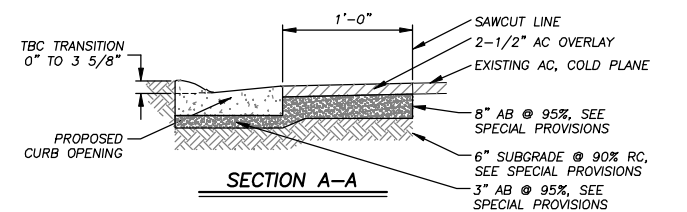
NOTE, PAYMENT FOR TYPE 2 CURB END SHALL BE INCLUDED IN CURB OPENING BID PRICE  
 \* TIE IN PAVEMENT IS INCLUDED IN 2-1/2" AC OVERLAY BID ITEM.



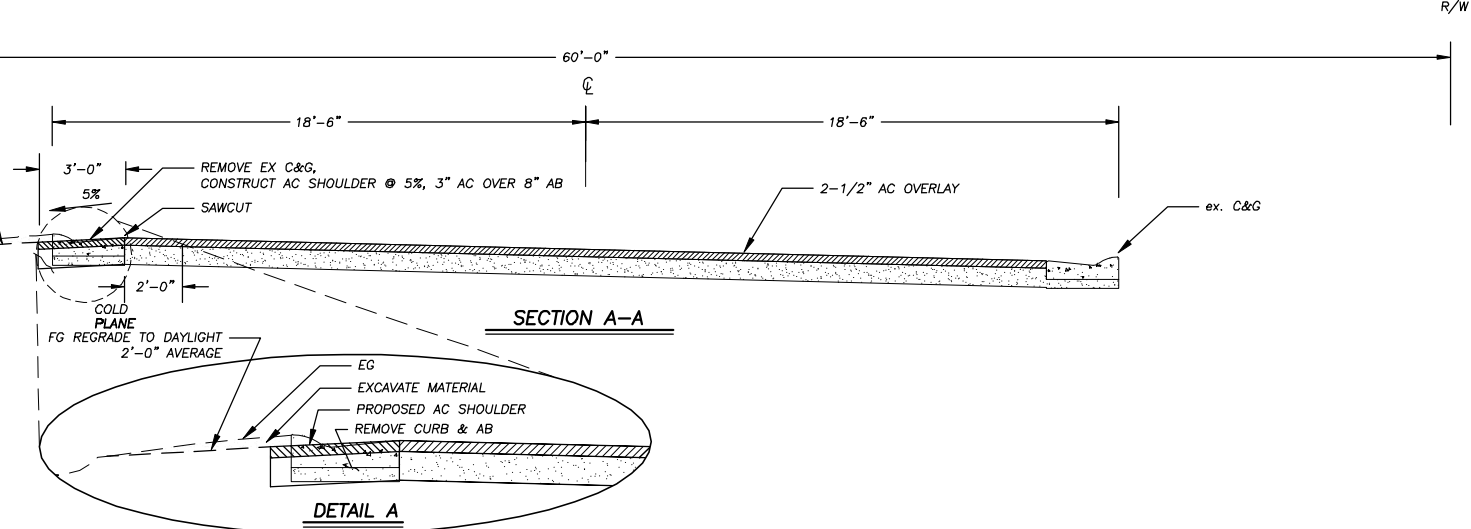
**CURB OPENING**



**EXISTING CURB & GUTTER REMOVAL**



**SECTION A-A**



**SECTION A-A**

**DETAIL A**

REVISION	NUMBER	DATE	DESCRIPTION	BY



PREPARED UNDER THE SUPERVISION OF:  
  
 REGISTERED CIVIL ENGINEER  
 DATE: 6/20/2011

DESIGNED: JTC  
 DRAWN: KIS  
 CHECKED: SPK  
 DATE: 6/2011  
 ROAD NUMBER: 114

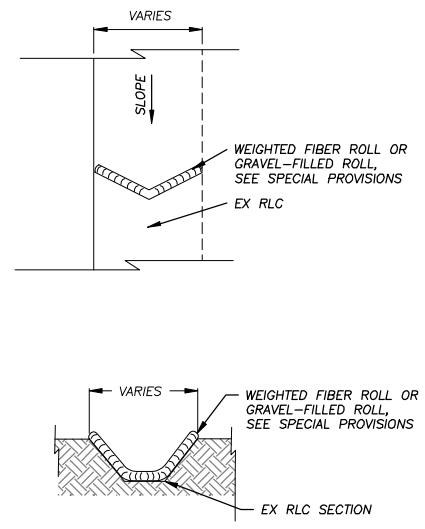


**EL DORADO COUNTY**  
 DEPARTMENT OF TRANSPORTATION

CONTRACT OVERLAY--NORTH UPPER TRUCKEE ROAD (2 MILES)  
 DETAILS

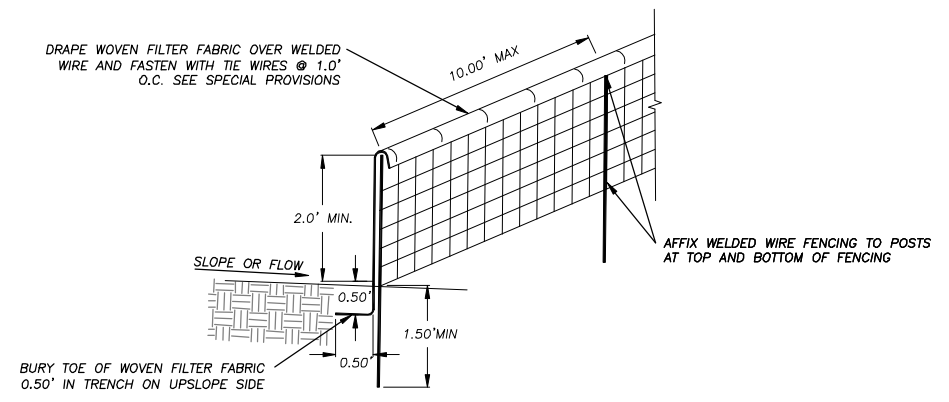
SHEET  
**D-1**  
 4 OF 6  
 CONTRACT NO.  
**PW 11-30581**  
 CIP No.  
**72128**

FOR REDUCED PLANS ORIGINAL SCALE IS IN INCHES 2 1 0



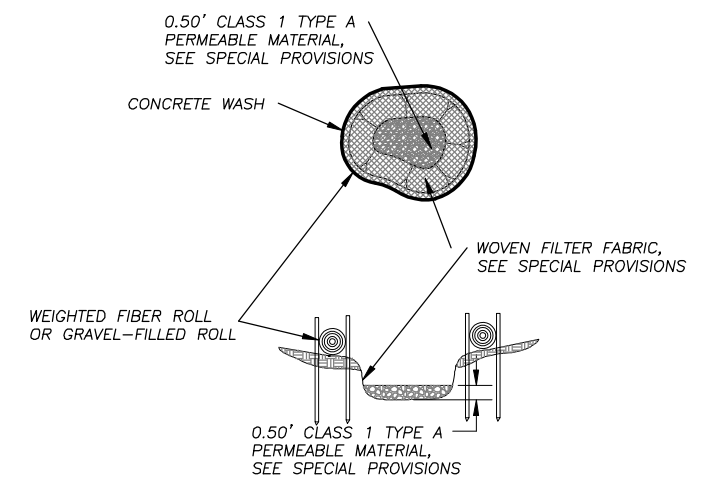
NOTE:  
SPACING INTERVALS FOR WEIGHTED FIBER ROLL OR GRAVEL FILLED ROLL  
TEMPORARY SEDIMENT CONTROL ON GRADE SHALL BE AT 50' OC FOR SLOPES  
GREATER THAN 5% AND AT 100' OC FOR SLOPES LESS THAN OR EQUAL TO 5%

**WEIGHTED FIBER ROLLS OR GRAVEL-FILLED ROLLS** 1  
NTS D-2



NOTES: 1. CONTRACTOR MAY USE PRE MANUFACTURED SEDIMENT CONTROL FENCE AS APPROVED BY THE ENGINEER, SEE SPECIAL PROVISIONS.  
2. PLACE FENCING SUCH THAT STORM RUNOFF CANNOT PASS AROUND OR UNDER FENCE.

**FILTER FENCE (FF)** 2  
NTS D-2



NOTE: CONCRETE WASH SHALL BE SIZED FOR WASHING ALL CONCRETE EQUIPMENT W/O OVER TOPPING BASIN.

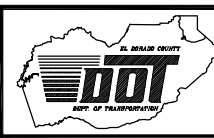
**CONCRETE WASH** 3  
NTS D-2

REVISION	NUMBER	DATE	DESCRIPTION	BY



PREPARED UNDER THE SUPERVISION OF:  
*[Signature]*  
REGISTERED CIVIL ENGINEER  
DATE: 6/20/2011

DESIGNED: JTC  
DRAWN: KIS  
CHECKED: SPK  
DATE: 6/2011  
ROAD NUMBER: 114

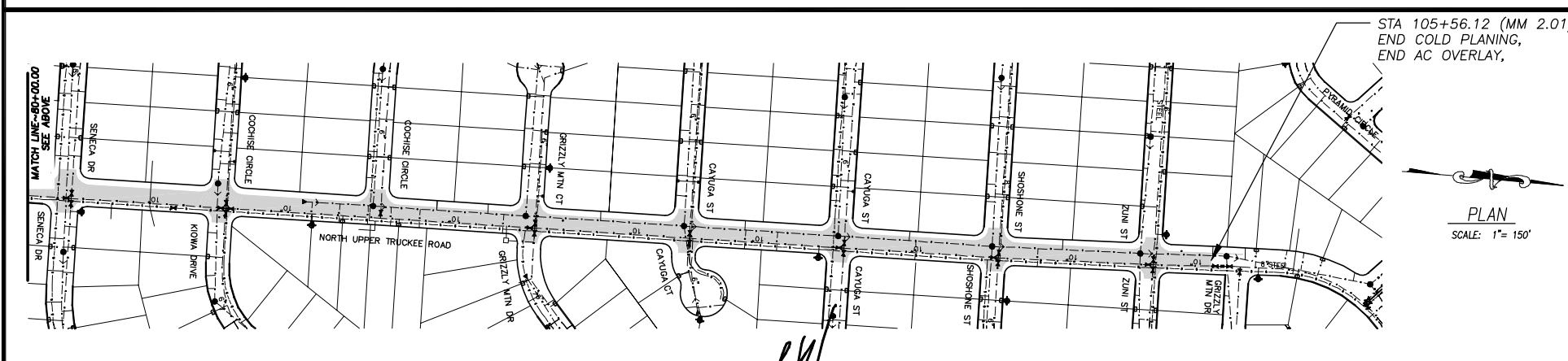
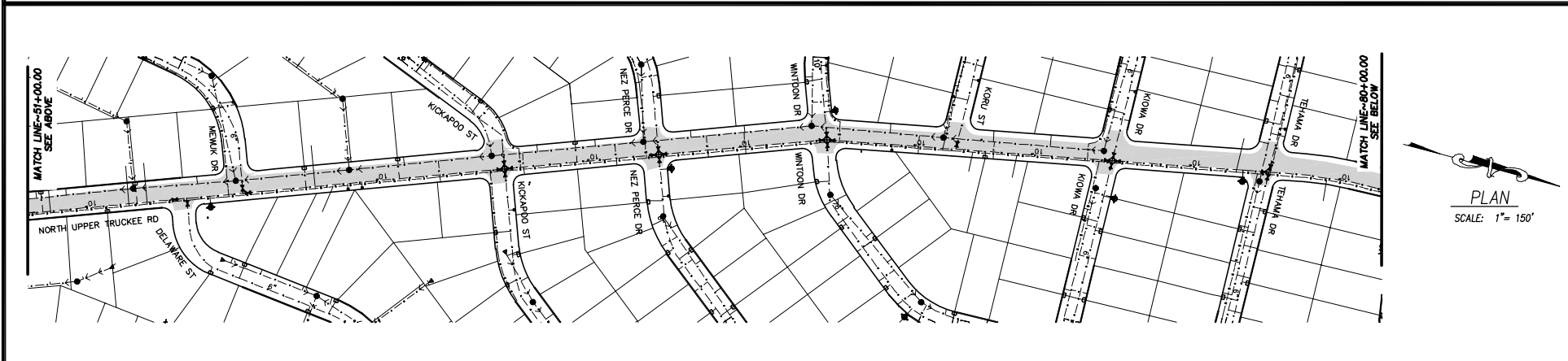
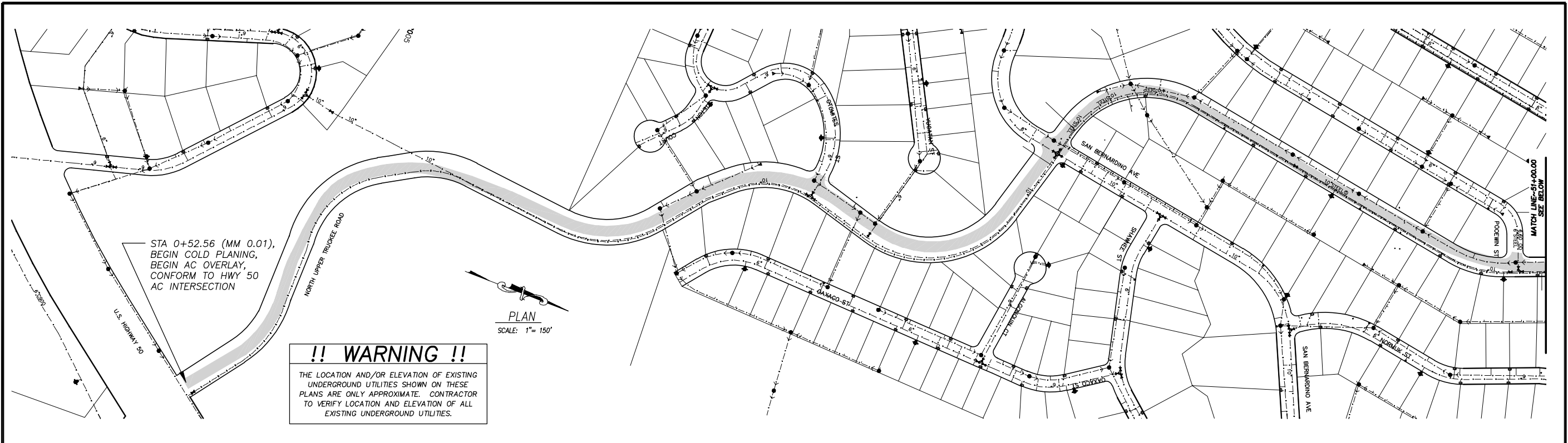


**EL DORADO COUNTY**  
DEPARTMENT OF TRANSPORTATION

CONTRACT OVERLAY-NORTH UPPER TRUCKEE ROAD  
(2 MILES)  
DETAILS

SHEET  
**D-2**  
5 OF 6  
CONTRACT NO.  
**PW 11-30581**  
CIP No.  
**72128**

FOR REDUCED PLANS ORIGINAL SCALE IS IN INCHES



UTILITY QUANTITIES		
UTILITY	COUNT	NOTE
SEWER		
TOTAL MANHOLES IN PROJECT LIMITS	25	
MANHOLES IN COLD PLANE LIMITS	6	
MAN HOLES IN CURB REMOVAL	1	
CLEAN OUTS NOT FOUND	2	
WATER		
TOTAL VALVES IN PROJECT LIMITS	53	
VALVES IN COLD PLANE LIMITS	3	ONE HAS CONCRETE PROTECTION EXTENDING 0.2' FROM CURB, ONE IS PRESSURE RELEASE
VALVES NOT FOUND	3	
GAS		
TOTAL VALVES IN PROJECT LIMITS	1	
VALVES IN COLD PLANE LIMITS	1	CONCRETE PROTECTION EXTENDING 0.7' FROM CURB
TELEPHONE		
TOTAL MANHOLES IN PROJECT LIMITS	1	
MANHOLES IN COLD PLANE LIMITS	1	

NOTES: 1. ITEMS LISTED IN THE TABLE AS "NOT FOUND" ARE SHOWN ON THE UTILITY GRID MAPS, BUT NOT FOUND DURING FIELD VERIFICATION.  
2. QUANTITIES LISTED IN THE TABLE ABOVE ARE ESTIMATES ONLY. IT IS THE CONTRACTOR'S RESPONSIBILITY TO VERIFY QUANTITIES AND COORDINATE WITH THE RESPECTIVE UTILITY COMPANY LISTED BELOW.

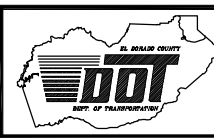
UTILITIES	
CABLE TELEVISION	CHARTER COMMUNICATIONS, (775) 588-1077
NATURAL GAS	SOUTHWEST GAS, (530) 543-3225
ELECTRIC	NV ENERGY, (530) 541-6400
SEWER & WATER	SOUTH TAHOE PUD, (530) 544-6474
TELEPHONE	AT&T, (530) 888-2031
STORM DRAIN	EL DORADO COUNTY DOT, (530) 573-3180

REVISION	NUMBER	DATE	DESCRIPTION	BY



PREPARED UNDER THE SUPERVISION OF:  
*[Signature]*  
REGISTERED CIVIL ENGINEER  
DATE: 6/20/2011

DESIGNED: JTC  
DRAWN: KIS  
CHECKED: SPK  
DATE: 6/2011  
ROAD NUMBER: 114



EL DORADO COUNTY  
DEPARTMENT OF TRANSPORTATION

CONTRACT OVERLAY-NORTH UPPER TRUCKEE ROAD  
(2 MILES)  
UTILITY PLAN

SHEET  
U-1  
6 OF 6  
CONTRACT NO.  
PW 11-30581  
CIP No.  
72128