

When the tracks are gone



By Edward Cunha

RECEIVED
BOARD OF SUPERVISORS
EL DORADO COUNTY

12:08 pm, May 24, 2011

10-1169.5F.1

When the tracks are gone



After the tracks were removed from the Camino Placerville and Lake Tahoe Railroad the rail bed was graded for use as a trail.

The following photos were taken at 06:30 AM this morning Just east of Camino Heights Drive on less then $\frac{1}{2}$ mile of trail..



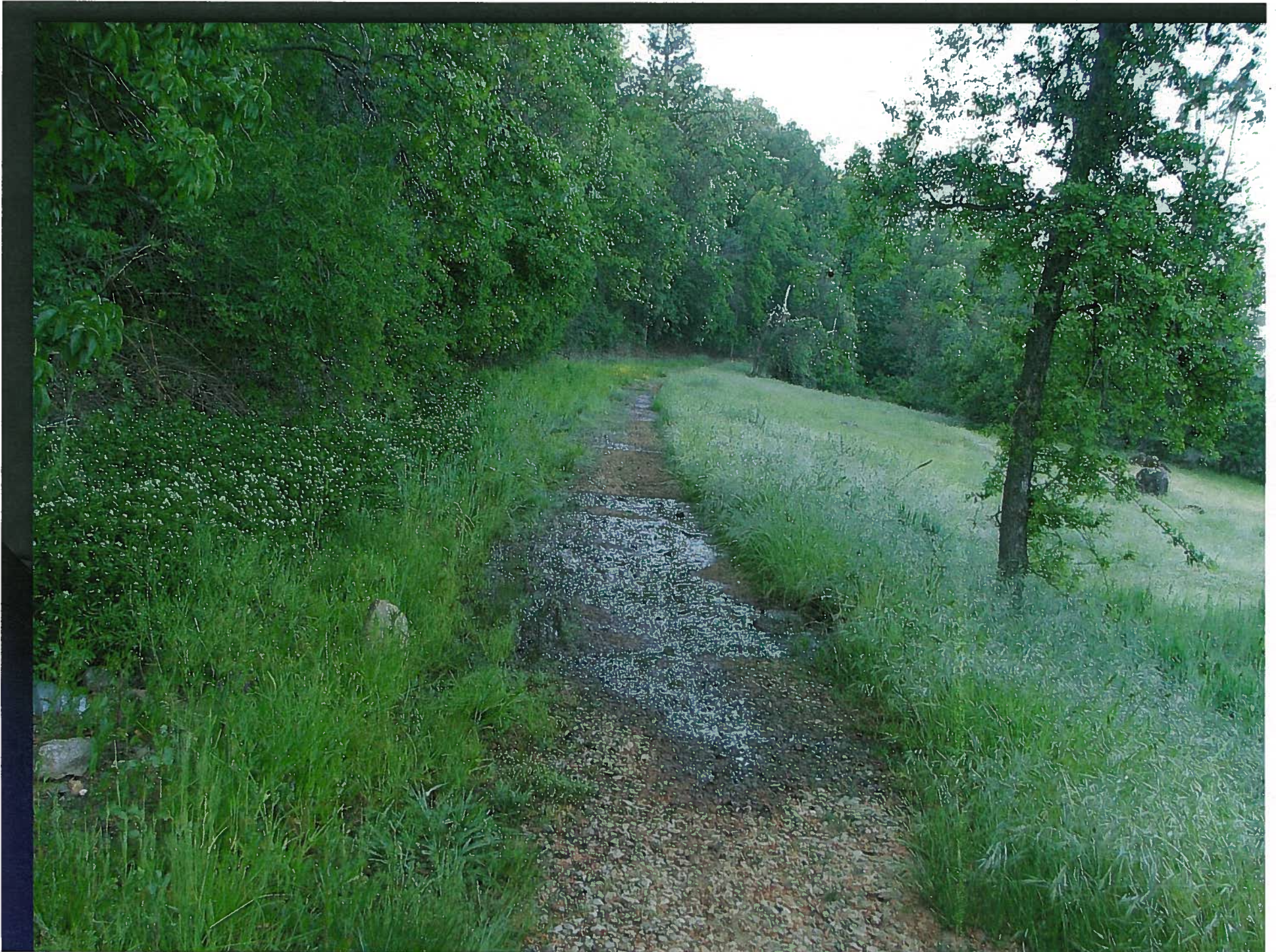
10-1169.5F.3



10-1169.5F.4



10-1169.5F.5



10-1169.5F.6



10-1169.5F.7



10-1169.5F.8



10-1169.5F.9



10-1169.5F.10



10-1169.5F.11



10-1169.5F.12



10-1169.5F.13



10-1169.5F.14



10-1169.5F.15



Thank You