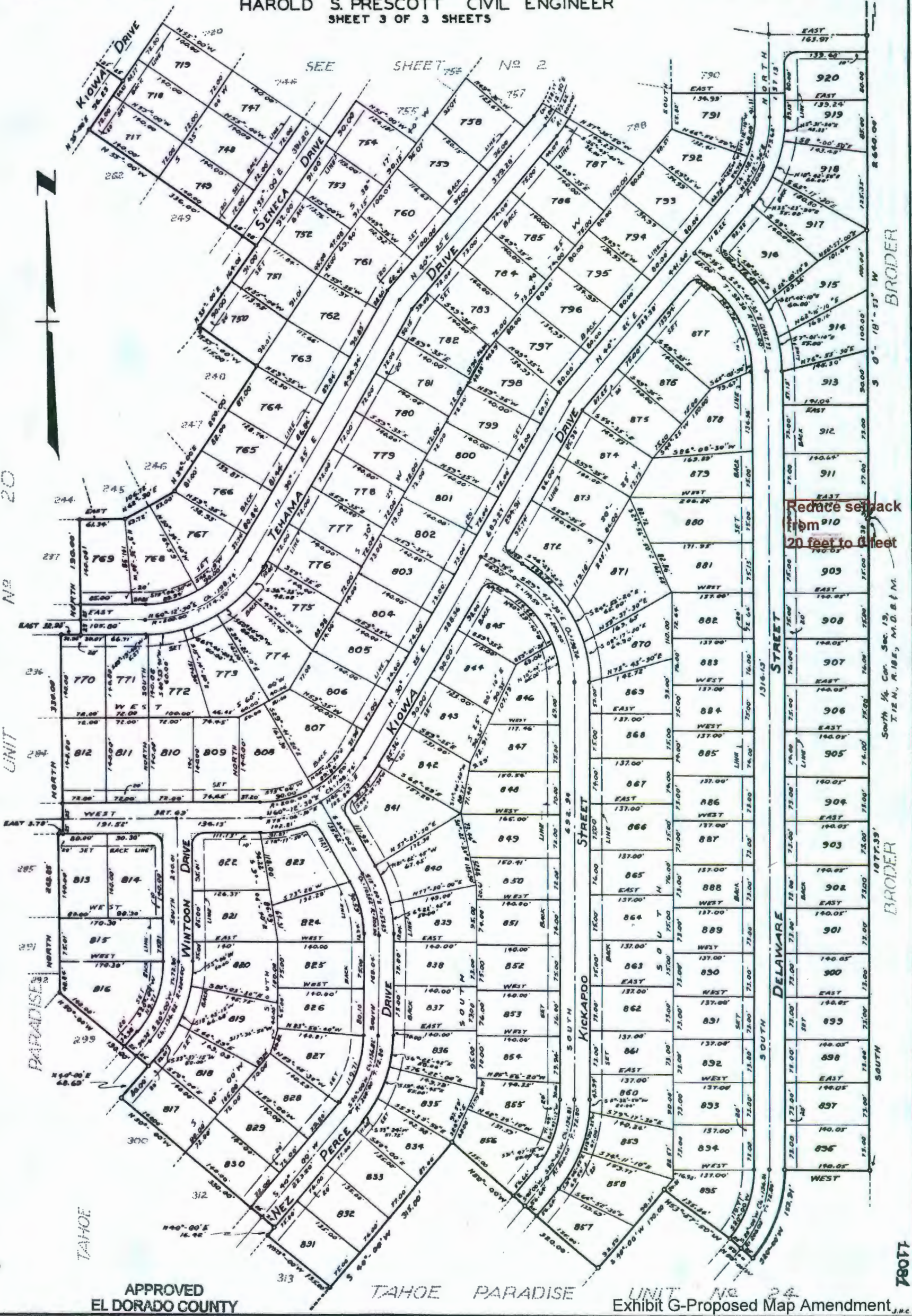


MAP OF TAHOE PARADISE UNIT NO. 22

COMPRISING A PORTION OF SECTION 19 & 30 T. 12 N. R. 18 E. M. D. B. & M.
COUNTY OF EL DORADO CALIFORNIA JUNE 1960 SCALE: 1 IN. = 100 FT.
HAROLD S. PRESCOTT CIVIL ENGINEER
SHEET 3 OF 3 SHEETS



APPROVED
EL DORADO COUNTY

Board of Supervisors
DATE October 20, 2020

Tiffany Schmid/gas
EXECUTIVE SECRETARY

TAHOE PARADISE UNIT NO. 22
Exhibit G-Proposed Map Amendment, J.N.C.

14097