

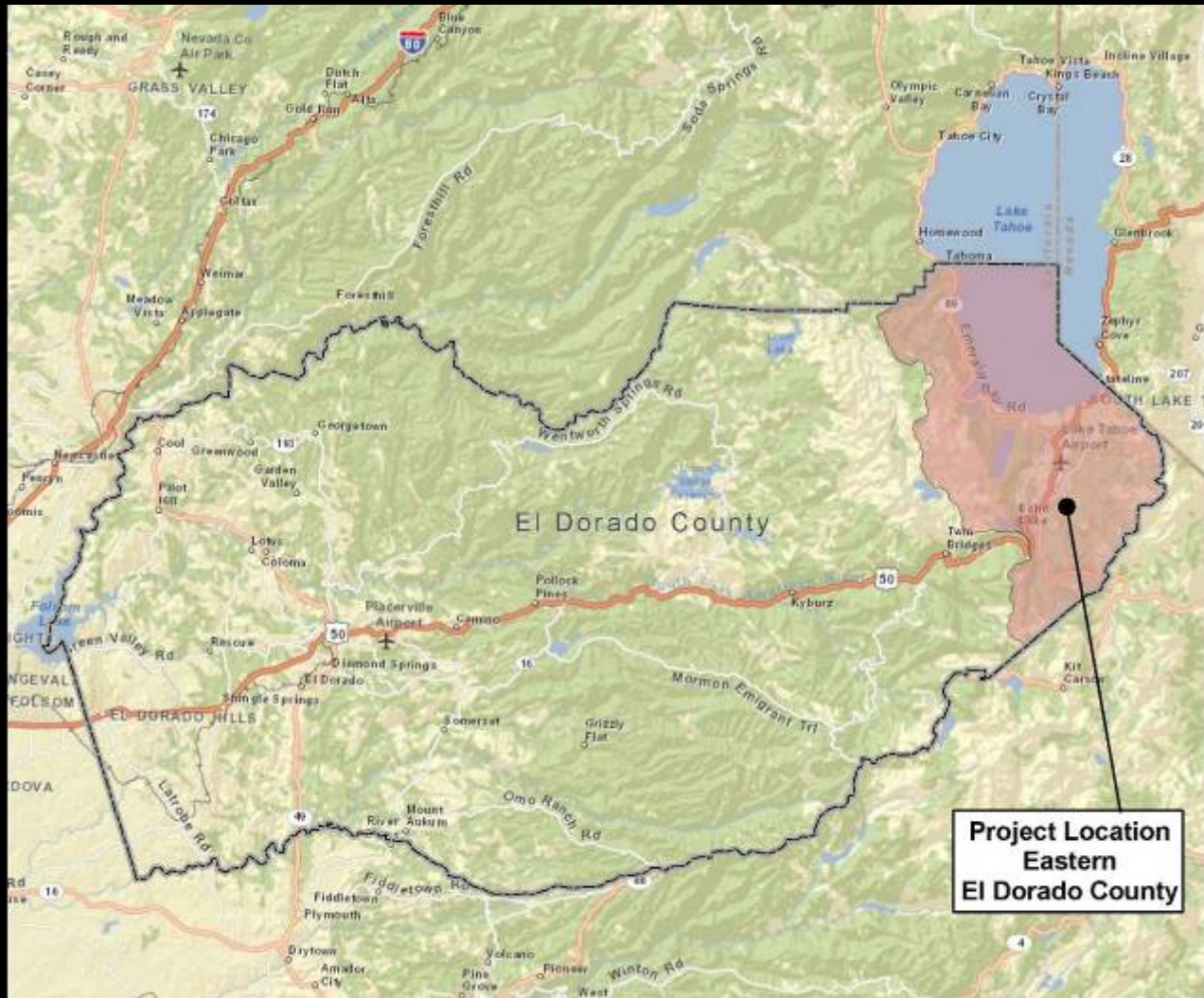
SOUTH LAKE TAHOE
parks, trails and recreation
MASTER PLAN

**El Dorado County
Board Meeting**
September 28, 2014

Parks, Trails & Recreation Master Plan



Planning Area

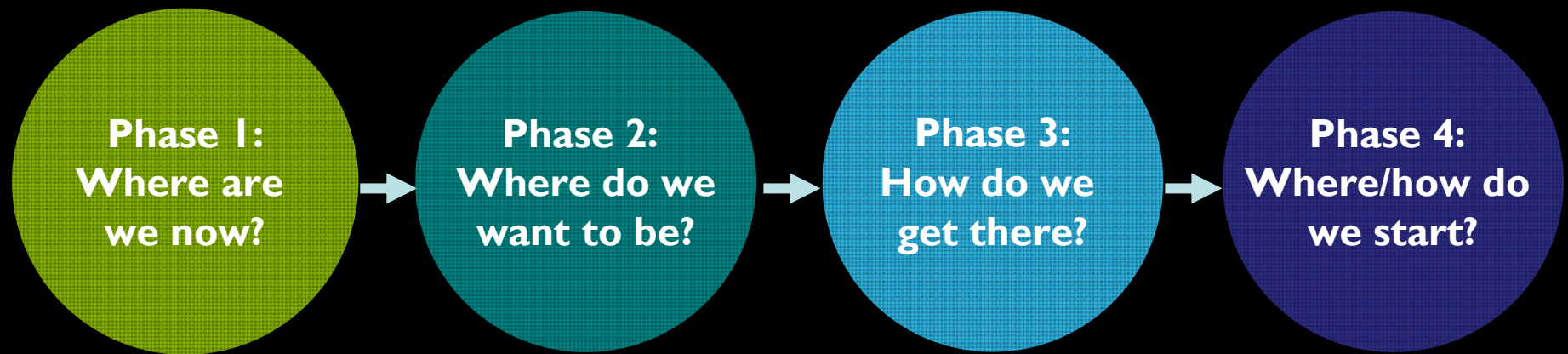




Planning Process

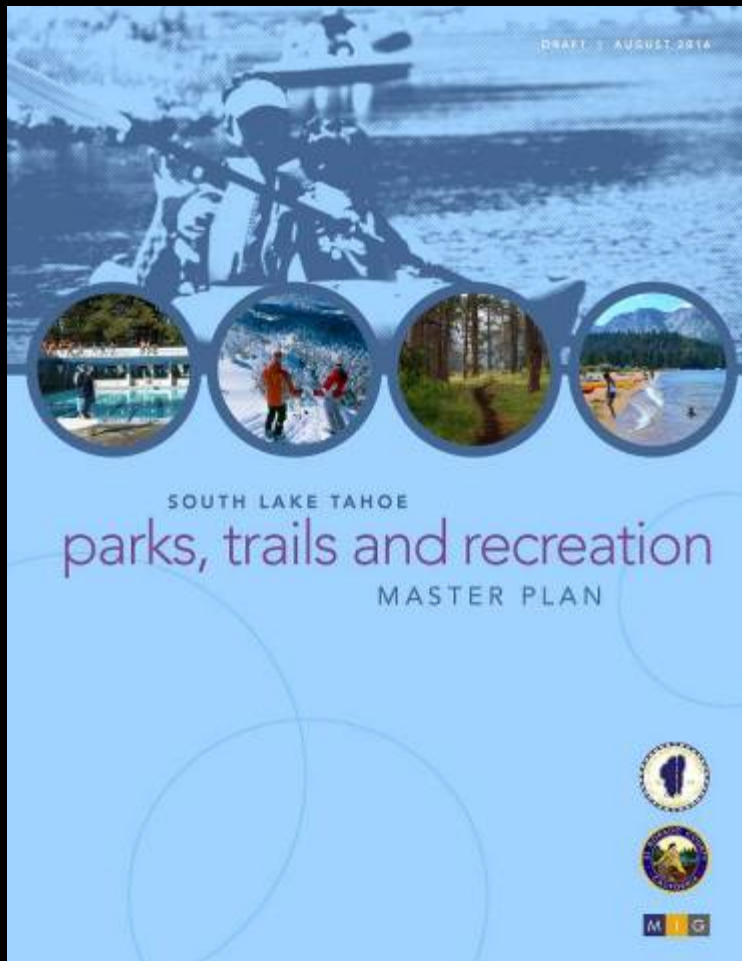
Spring 2013

Fall 2014



Public Participation, Outreach and Involvement

Purpose of the Meeting



1. To provide an overview of the draft plan.
2. To share the priority projects identified by the community.
3. To collect your comments to refine the plan and help prioritize project funding.



Technical Analysis

Demographics and Market

- City population 21,500
- County population (eastside) 31,500
- Annual overnight visitors to South Shore 1.6 million



Opportunities for Recreation

- Iconic national treasure (Lake Tahoe)
- Natural opportunities for outdoor recreation
- Many recreation providers
- Lodging base for recreation tourism
- Agreement that recreation is the region's business



Challenges for Recreation

- Little coordination between providers
- Lack of information about what is available
- Lack of trail connectivity
- Decline of gaming industry
- Recession



City/County Challenges:

- Aging, worn facilities
- Deferred maintenance
- Limited staffing, resources, & operational capacity
- Need for updated policies and standards
- Need to prioritize expenditures



El Dorado County Challenges:

- Limited investment in eastern County
- Unmet park standards
 - Current LOS: 1.8 acres per 1,000 residents
 - LOS standard: 5 acres per 1,000 (RP, CP & NP)
 - Park deficiency: approx 95 acres
- County resident opposition to park or facility development to serve visitors or City
- Need for more visibility/recognition for County parks and trails
- Different priorities from City

El Dorado County Opportunities

- Establish new eastside standards and priorities (community parks and trails)
- Invest in 56-acre site as joint County/City park
- Work with TPRID Board on options for Tahoe Paradise Park
- Continue to monitor needs for recreation near Meyers



Public Participation Findings

Public Participation

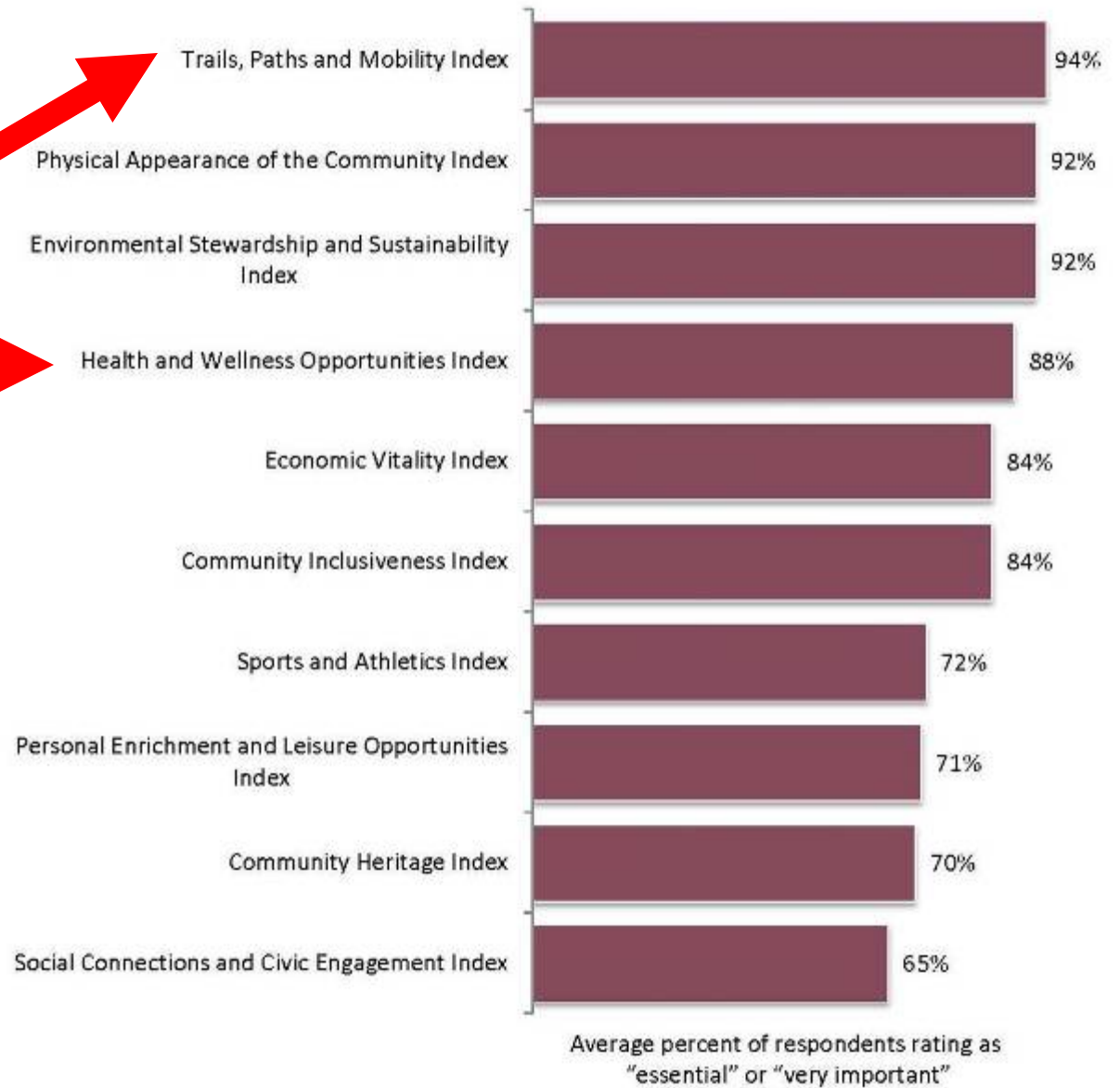
- Over 1,300 participants were involved.

Type of Public Outreach Activity	Number of Participants
Online Questionnaire	885
PARCS Survey*	324
Intercept Survey	20
Focus Group	18
Stakeholder Interviews	16
Master Plan Advisory Committee (MPAC)	15
Visioning Roundtables	55
Total	1,333

* Statistically-representative survey with a margin of error of $\pm 6\%$.

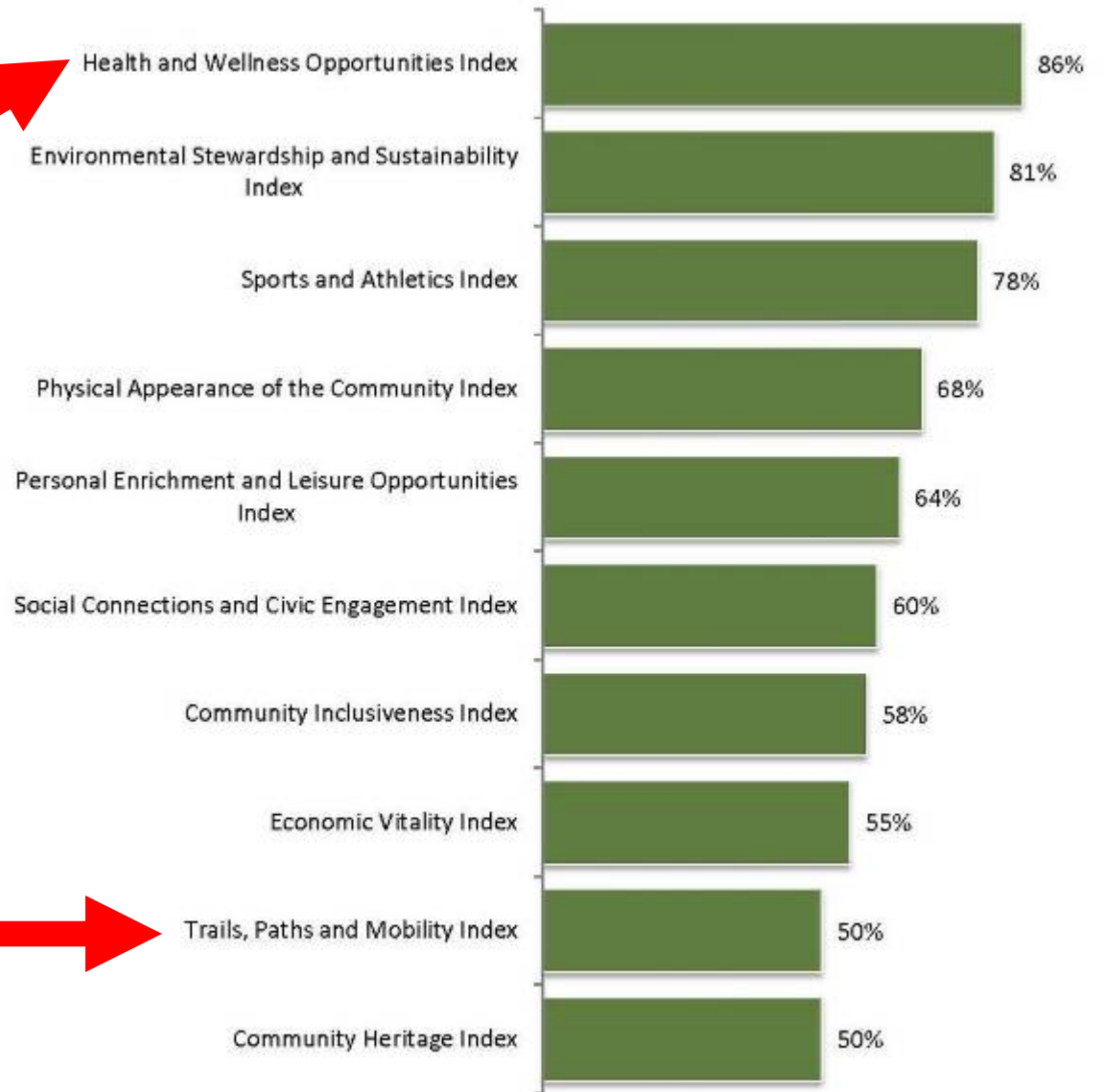
Survey: Community Priorities

Figure 2: Community Priorities Indices



Survey: Community Ratings

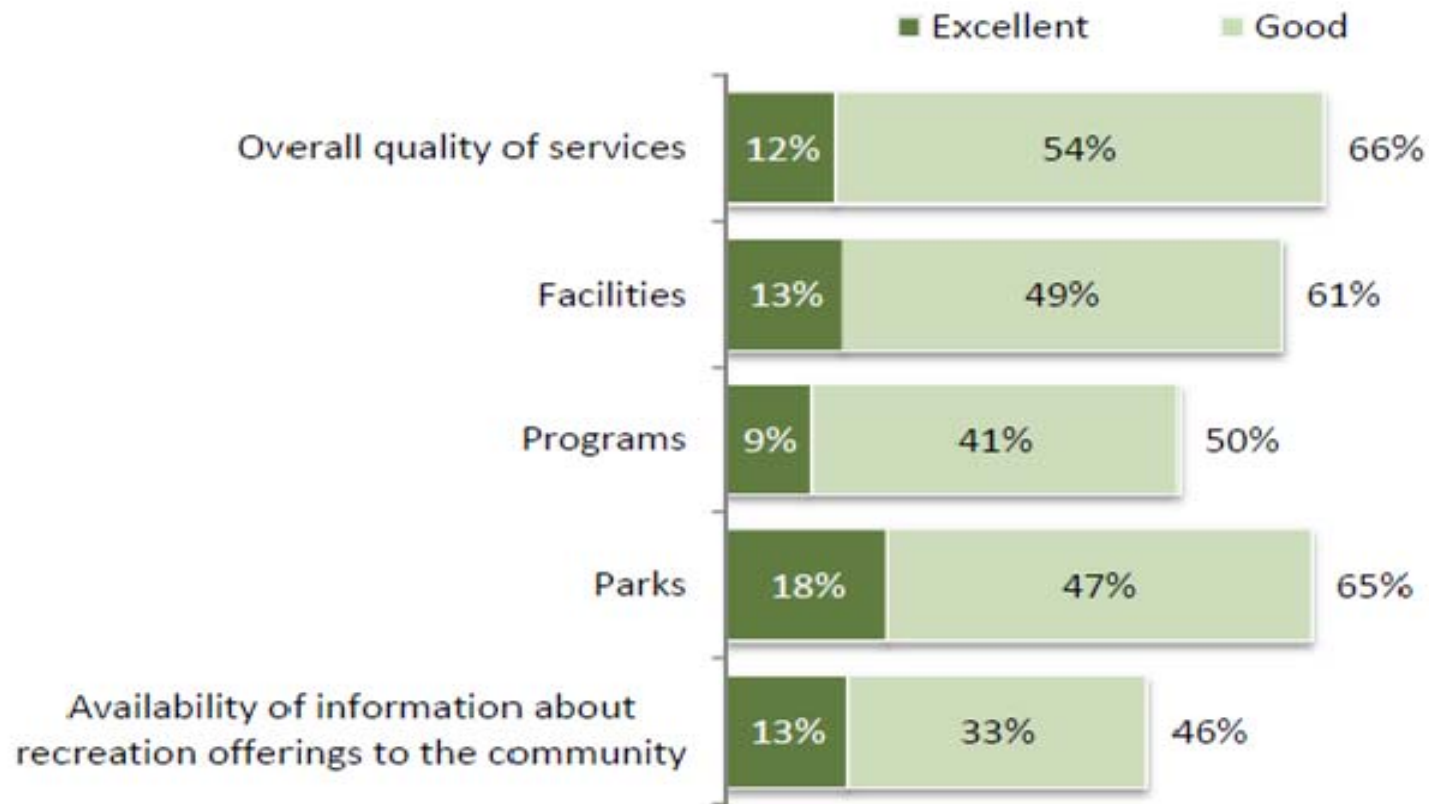
Figure 1: Community Characteristics Indices



Average percent of respondents rating as "excellent" or "good"

Survey: Overall Service Ratings

Figure 31: Overall Ratings of Parks and Recreation Services and Facilities



Survey: Overall Service Ratings

Table 46: Comparison of Services and Facilities Ratings to the Benchmark

Service or amenity	Comparison to benchmark
Overall quality of services	Below
Facilities	Much below
Programs	Much below
Parks	Much below
Availability of information about recreation offerings to the community	Much below

Survey: Facility Ratings

	Facilities
Higher in Importance, Higher in Quality	<ul style="list-style-type: none"> • Bijou Community Park • Campground by the Lake • El Dorado Beach • Lakeview Commons
Higher in Importance, Lower in Quality	<ul style="list-style-type: none"> • Senior Center • Bicycle trails • Recreation and Swim Complex • Bijou Dog Park • Regan Beach

Questionnaire: Top 4 Facility Needs

Answer	Percentage
More trails and pathways	46.2%
Bike park	35.3%
Large amphitheater or event venue	30.5%
Water access (for swimming, fishing, tubing, rafting, etc.)	30.4%

Questionnaire: Top Funding Priorities

Answer	Percentage
Expand the trail network	43.6%
Improve maintenance and condition of existing parks & facilities	42.6%
Add more recreation facilities in existing parks	20.3%
Offer more programs, events and activities	17.5%
Invest in big facilities that support tourism and the local economy	17.5%

Questionnaire: Trail Needs

More trails are needed. Why?

1. To walk/bike places (e.g., grocery store, work, school)
2. To get to parks and recreation facilities
3. For recreation
4. For exercise
5. To experience nature



Vision & Mission

Community Vision for Recreation

- We envision an **accessible, interconnected, and sustainable** system of diverse, year-round recreation opportunities for residents and visitors.
- Our **world-class** parks, facilities, trails, and programs inspire and engage recreation enthusiasts, shape our community, connect us to our natural environment and support our **shared future in the South Shore**.

City and County Mission

- To work collaboratively to inspire accessible and engaging recreation experiences throughout the South Shore.





Recommendations

Recommendations

- Regional Coordination and Collaboration
- Park & Facility Maintenance, Renovations and Improvements
- New Park, Facility and Trail Development
- Recreation Activities, Programs and Events
- Operations and Management

Regional Coordination & Collaboration

- Create a bi-state, multi-jurisdictional Recreation Consortium to improve service delivery.
- The City envisions this as a JPA to help fund, manage, and market a user-friendly recreation system to maximize economic benefit.



Maintenance, Renovations & Improvements

- Build Bijou Bike Park.
- Transform the South Tahoe Recreation Area into a world class park.
- Renovate the Recreation Complex and Campground.
- Improve trails/bike paths.
- Enhance Regan Beach.
- Discuss options with TPRID to improve Tahoe Paradise Park.



New Park, Facility & Trail Development

- Build multi-purpose trails to improve connectivity and access.
- Support trail recreation for different skill levels.
- Improve water access.
- Monitor needs for a County park.
- Consider partnering to build an events venue.



Recreation Activities, Programs & Events

- Implement online reservation system, improve cost recovery for events and programs, offer programs that introduce people to nature and the outdoors. Provide youth programming year round.



Operations & Management

- Add staff.
- Improve maintenance.
- Fund the replacement of old & worn facilities.
- Improve coordination with partners and special interest groups willing to help meet community recreation needs.





Your Priorities

Implementation Plan

- **Quick Wins!** Projects are in motion or will be initiated in the first year. Quick wins show the City, County and entire community's commitment to improving parks and facilities.
- **Short Term Priorities:** Projects are important to this community. The City and County will strive to complete these in the next 2-5 years.

Operations Initiatives

- Consortium development
- Consolidated information about recreation
- Increased parks and recreation staffing
- Water efficiency / sustainability measures
- More indoor programs at the Recreation Center
- More special events
- Improved park maintenance
- Improved trail maintenance
- Programs for different ages and cultures
- Recreation information in English and Spanish

Quick Wins

- Bijou Bike Park development
- Al Tahoe sports field improvements
- Recreation & Swim Complex master plan
- Regan Beach master plan for restoration
- Trail resurfacing and signage improvements
- South Tahoe Greenway extension
- Sawmill Bike Path extension
- Tahoe Boulevard Enhancement
- Recreation Area campground upgrades & maintenance shop relocation

Short-term Capital Projects

- Trail development
- Bike and pedestrian crossings
- South Lake Tahoe Recreation Area improvements
- Lakeview Commons at El Dorado Beach improvements
- Recreation & Swim Complex renovation
- Bijou Park improvements
- South Lake Tahoe Community Playing Field improvements
- Regan Beach restoration
- Bijou Golf Course enhancement
- Joint-use sport field improvements
- Tahoe Paradise Park master plan coordination
- Open space and water efficiencies



What projects are priorities for the County?



Conclusions/Next Steps

Conclusions



- Community support for recreation is strong.
- The plan invites residents, interest groups, businesses and other agencies to work together to achieve your priorities for recreation.



SOUTH LAKE TAHOE
parks, trails and recreation
MASTER PLAN



In association with:
Environmental Planning Partners, Inc.
Ballard * King