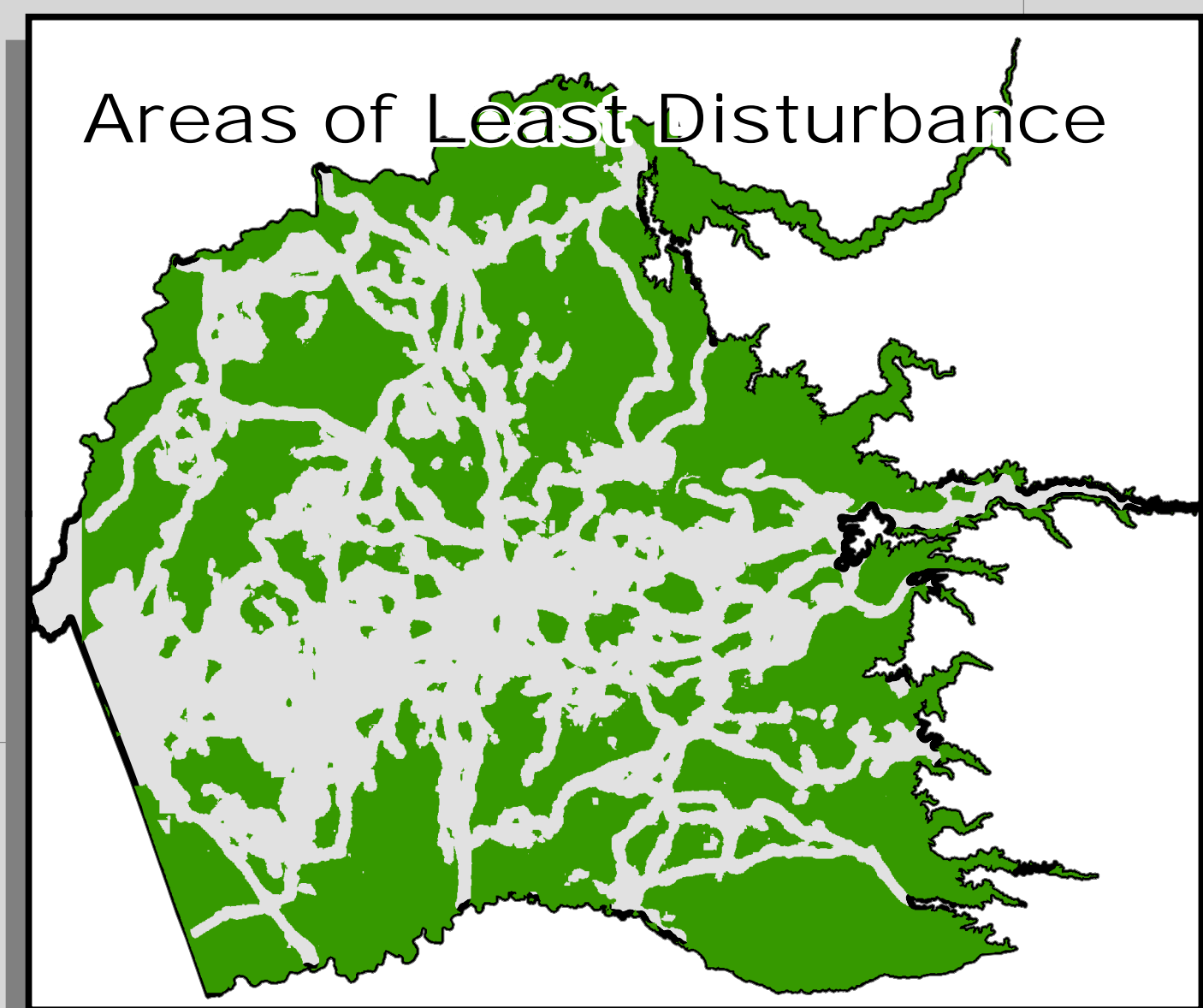


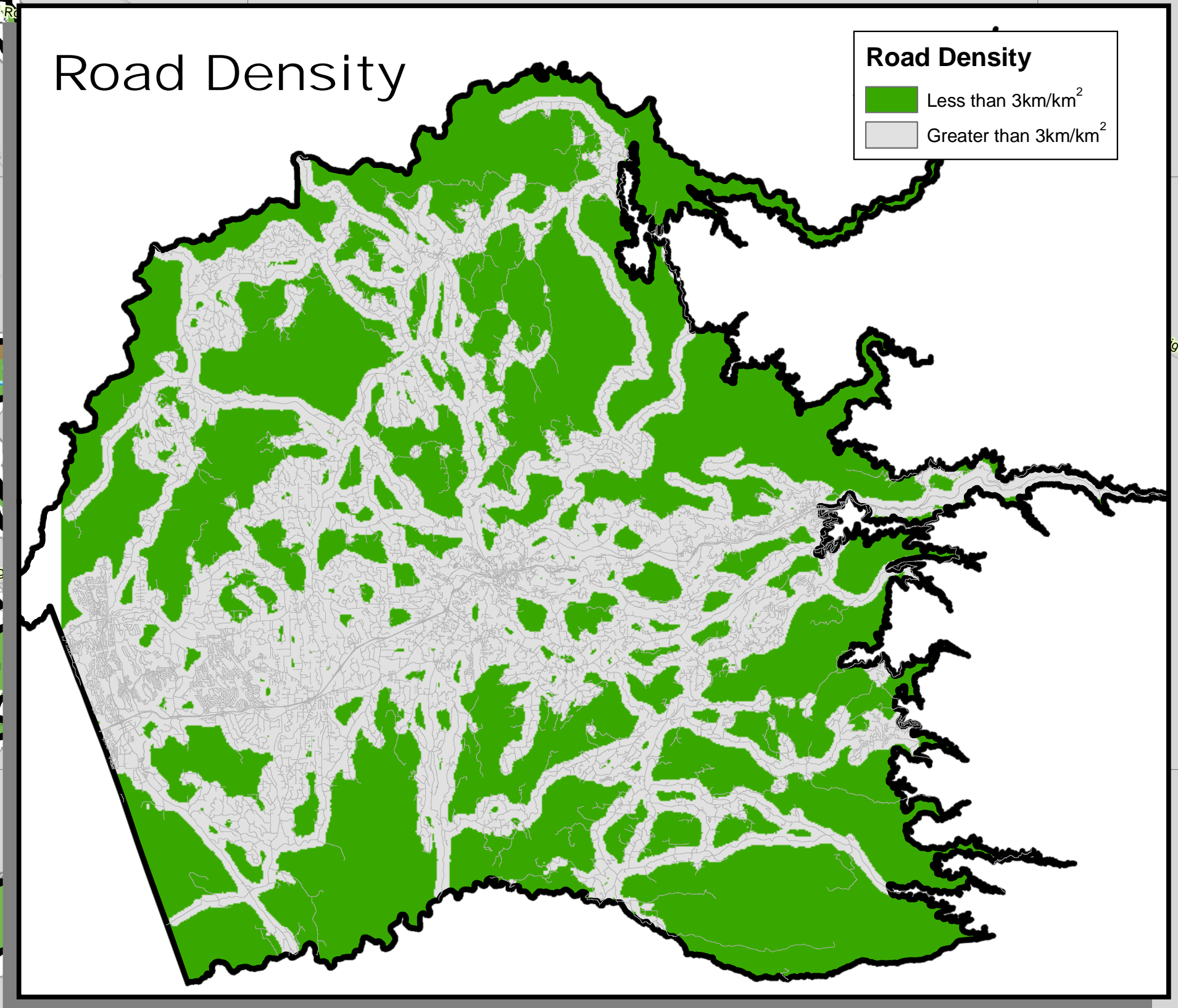
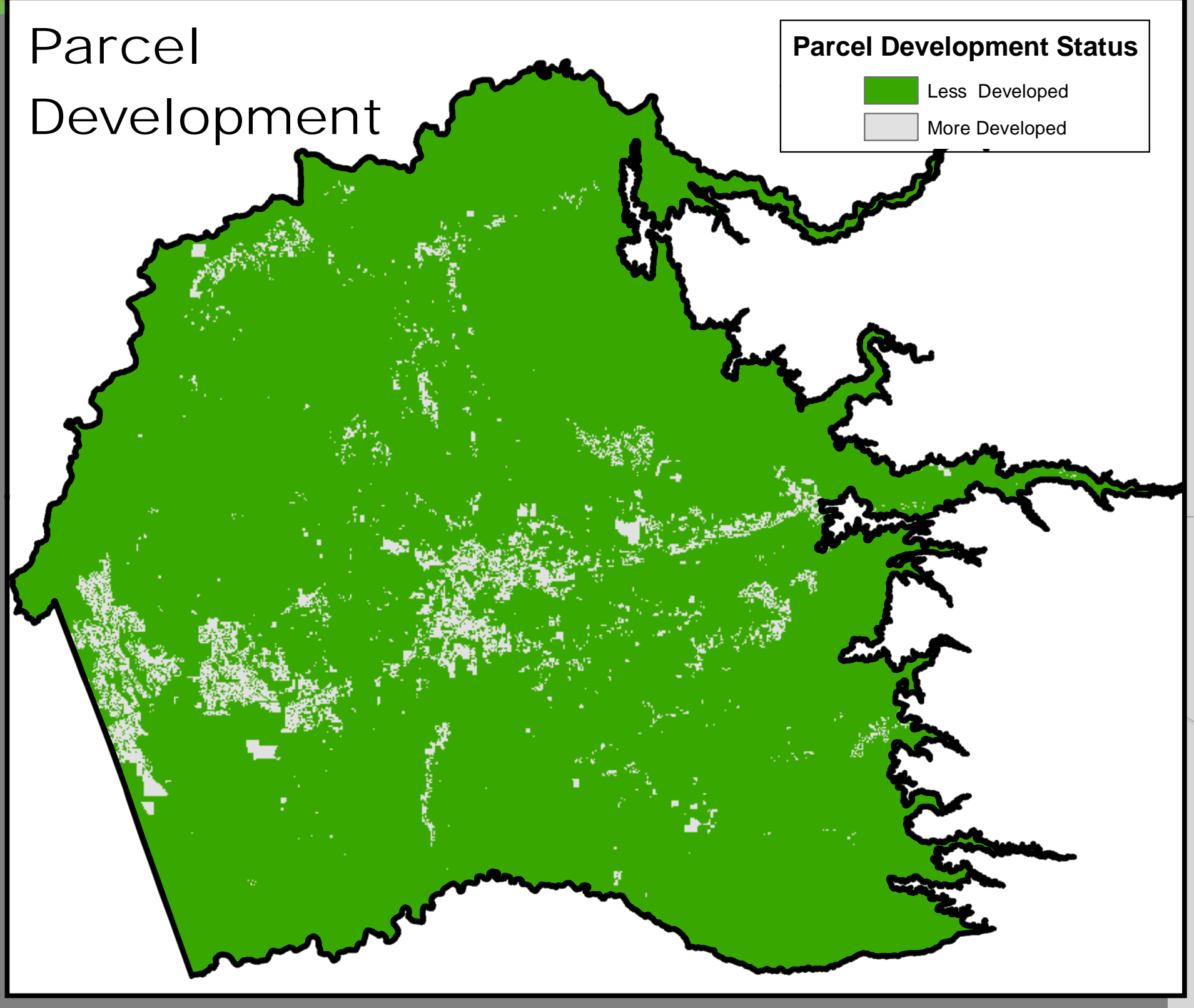
Figure 5. INRMP Inventory Map Update: Large Expanses of Native Vegetation



CWHR Code	CWHR HABITAT TYPE	Total Area	Large Expanses	% of Total in Large Expanses
<b>Herbaceous Communities</b>				
ACR	Annual Grassland	78,401	35,251	45%
MTM	Montane Meadow	27	11	41%
<b>Shrub Communities</b>				
CRC	Chamise Chaparral	5,872	2,891	49%
MCH	Montane Chaparral	32,176	18,914	59%
MCP	Montane Chaparral	1,201	691	58%
<b>Herbaceous Community (Oak)</b>				
VW	Valley Oak Woodland	3,214	818	26%
BCP	Blue Oak Foothill Pine	12,943	4,453	34%
BCF	Blue Oak Foothill Pine	42,644	21,500	50%
MBK	Montane Hardwood Conifer	34,183	19,181	56%
MHW	Montane Hardwood	175,091	87,341	50%
<b>Coniferous Communities</b>				
CPC	Closed Cone Pine Conifers	143	262	185%
DFC	Douglas Fir	42,204	46,463	110%
PPC	Ponderosa Pine	67,644	45,947	68%
SMC	Sierran Mixed Conifer	176,848	105,899	60%
<b>Riparian Communities</b>				
MRI	Montane Riparian	245	283	115%
<b>Grand Total</b>				
		521,442	299,978	58%

**Map Features**

- 4,000-foot contour - INRMP Study Area
- County Designated Rural Centers
- County Designated Community Region
- Buffers of Low-traveled Roads<sup>2</sup>
- CWHR Herbaceous Communities<sup>1</sup>
- Annual Grassland
- Wet Meadow
- CWHR Shrub Communities<sup>1</sup>
- Chaparral (mixed, montane, chamise)
- CWHR Hardwood Communities<sup>1</sup>
- Valley Oak Woodland
- Blue Oak Foothill Pine and Blue Oak Woodland
- Montane Hardwood and Montane Hardwood Conifer
- CWHR Coniferous Communities<sup>1</sup>
- Closed Cone Conifer
- Douglas Fir, Ponderosa Pine and Sierran Mixed Conifer
- CWHR Riparian Communities<sup>1</sup>
- Montane Riparian<sup>1</sup>



Sierra Ecosystem Associates

1 0.5 0 1 2 3 Miles

Datum: North American Datum 1983  
Coordinate System: State Plane: California Zone II (Feet)

**Notes**

<sup>1</sup>Vegetation community data extracted from the CalVeg database. CalVeg data is available from the California Department of Forestry and Fire Protection (downloaded January, 2010). Last updated 2005.

<sup>2</sup>Less-traveled roads that represent less-significant barriers to species movements. These roads were identified from the County GIS roads database with input from the ISAC and PAW/TAC.

**Revised Draft**

Date: May 27, 2010  
Map Prepared By: Ethan Koenigs