

LATE DISTRIBUTION
DATE 5/14/2010

New Morning Youth & Family Services
Restoring hope, changing lives. A tradition of caring since 1970.

Mission

To provide quality professional social services to enhance the lives of Western Slope El Dorado County youth and their families.

New Morning offers high-quality services in two primary areas:

- Emergency shelter for runaway, throwaway and homeless youth, and
- Professional counseling for children ages birth – 18.

Professional Therapy

34 Sites

20 therapists

Current Case Load = 363 Children



Statistics

Ethnicity

- White/Caucasian: 79.4%
- Latino: 11.4%
- Native American: 5.1%
- Others: 4.1%



Statistics

Ages

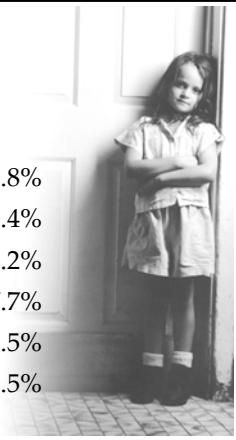
- Birth - 5: 17%
- 6 - 12: 35%
- 13 - 18: 48%

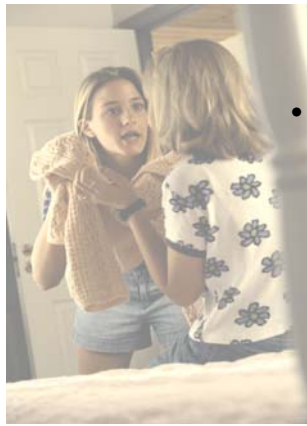


Statistics

Referrals

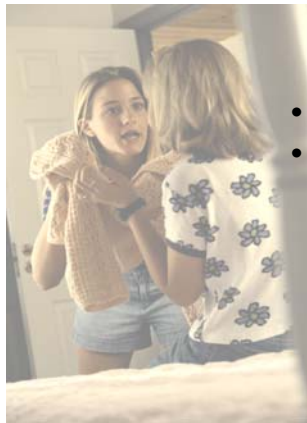
- Schools: 51.8%
- Family, friends, self: 18.4%
- Public Sector: 14.2%
- Non-Profits 7.7%
- Law/Courts 5.5%
- Private Sector 2.5%






Clinical Issues

- Child Abuse 60.9%



Clinical Issues


- Child Abuse 60.9%
- Family AOD: 58.3%




Clinical Issues

- Child Abuse 60.9%
- Family AOD: 58.3%
- D.V.: 52.3%

Emergency Youth Shelter



Emergency Youth Shelter



Opened in 1992

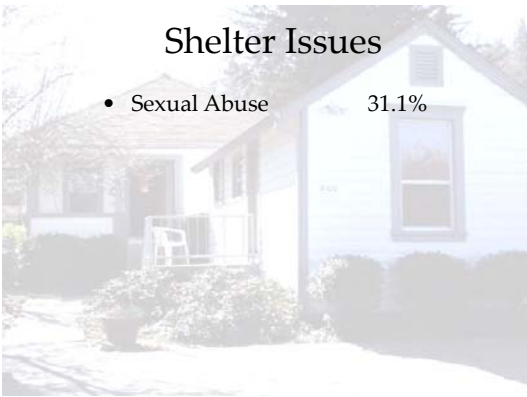
Emergency Youth Shelter



Opened in 1992

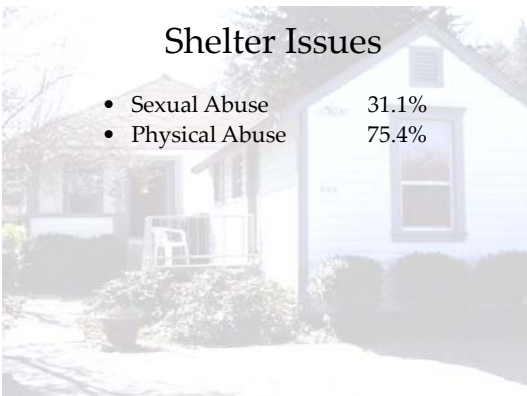
Served over 2,600 children

Shelter Issues

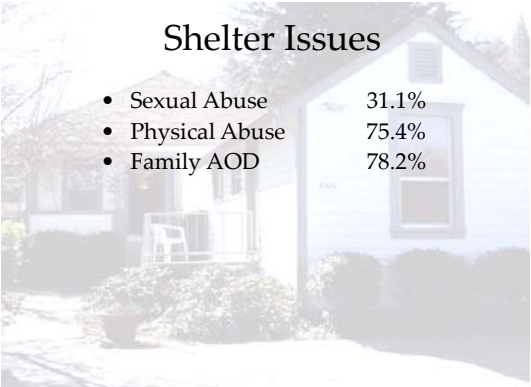


- Sexual Abuse 31.1%

Shelter Issues

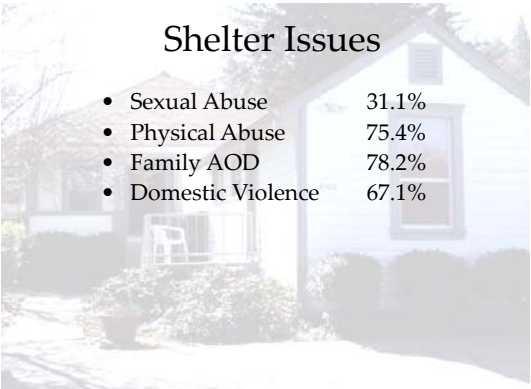


- Sexual Abuse 31.1%
- Physical Abuse 75.4%



Shelter Issues

- Sexual Abuse 31.1%
- Physical Abuse 75.4%
- Family AOD 78.2%



Shelter Issues

- Sexual Abuse 31.1%
- Physical Abuse 75.4%
- Family AOD 78.2%
- Domestic Violence 67.1%



New Shelter Opens 2011



New Morning & Medi-Cal

- New Morning's costs for Medi-Cal services are well below SMA costs.
- 176 Medi-Cal eligible clients currently seek services from New Morning.

Meaningful Value

- HRY Shelter \$45,000
- HRY Counseling \$79,200

As a result New Morning was able to leverage an additional \$600,000 in other services.
