



# **El Dorado County Surveyor's Office**

*Mission & Goals for 2021-2022 Budget Year*

*Phil Mosbacher, County Surveyor*

*Jose Crummett, GIS Manager*



*Geographic  
Information Systems*

*Surveyor*

## **Survey Department Programs**

### **Land Survey Program**

1. Check and process maps and documents submitted by Professional Land Surveyors
2. Provide property ownership information

### **Geographic Information System Program**

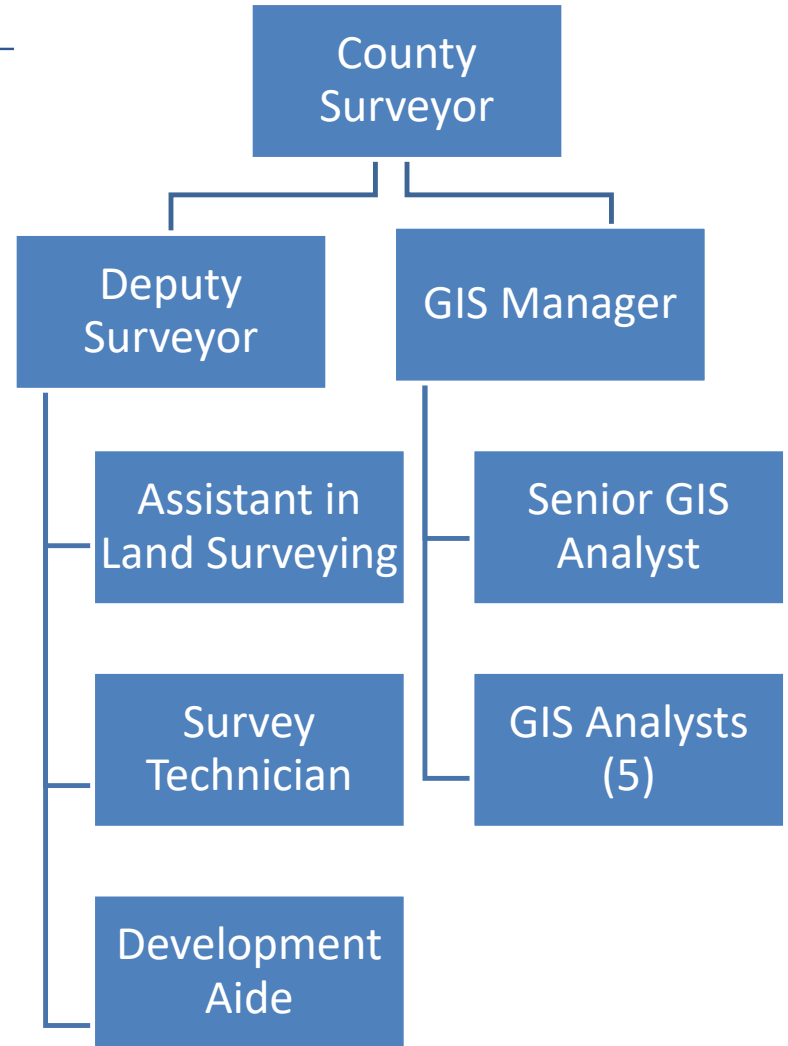
1. Maintain countywide GIS data, map layers, and web applications.
2. Deliver GIS services to County and external clients.



# Department & Support Staff

---

- Land Survey Program  
5 FTE
- Geographic Information Systems Program  
7 FTE
- *CAO Financial Admin Staff*



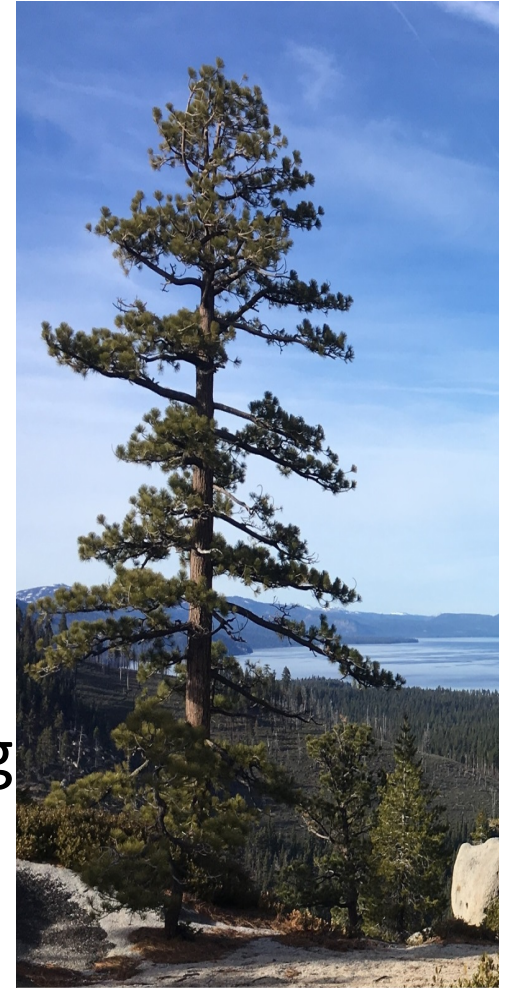


# Land Survey Program Responsibilities

---

## Review all projects submitted

- Parcel Maps
- Subdivision Maps
- Records of Survey & Corner Records
- Lot Line Adjustments
- Certificates of Compliance
- Street Naming and Parcel Addressing



# Land Survey Program Responsibilities

---

- Provide property ownership information
- Process Abandonment of Public Easements and Irrevocable Offers of Dedication
- Provide expertise and assistance to County Departments and outside agencies



# County Surveyor Office Clients

---

## General Public

- Professional Land Surveyors
- Civil Engineers
- Professional & Private Developers
- *270+ monthly public counter contacts*

## County Land Use Departments

- Planning
- Building
- Facilities
- Transportation
- Agriculture
- Environmental Management



# County Surveyor Office Clients

---

## Government Departments

- Board of Supervisors
- County Counsel
- Recorder
- Assessor
- CAO
- IT

## Public Safety Departments

- District Attorney
- Public Defender
- Sheriff
- Fire



# County Surveyor Authority Defined by Law

---

1. CA Government Codes
2. CA Code of Regulations: Board of Professional Engineers, Land Surveyors and Geologists
3. CA Business and Professions Code
4. CA Public Resources Code
5. CA Code of Civil Procedure
6. CA Penal Code
7. El Dorado County Code





# FY 2021-2022 Land Survey Program Goals

---

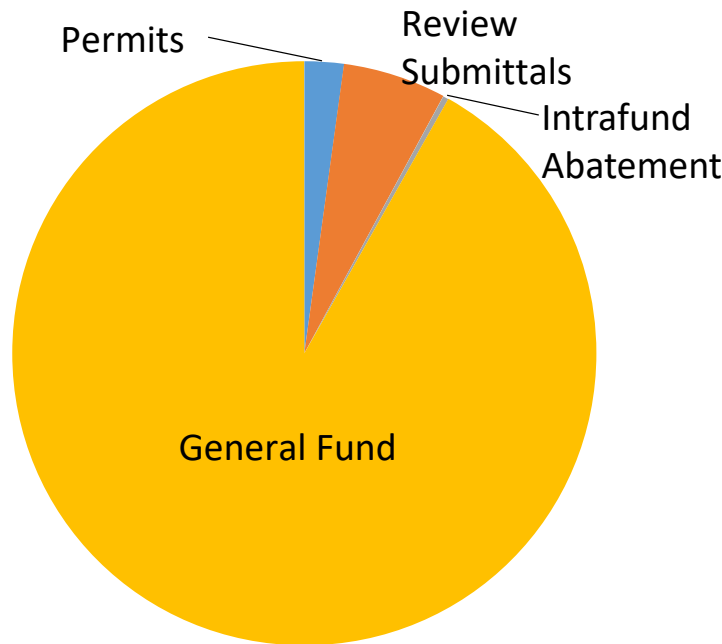
- Increase efficiencies using revised research tools and project management software.
- Update the County Base map imagery.
- Create a graphical record map research database.
- Complete Supervisorial redistricting using the results of 2020 national census.



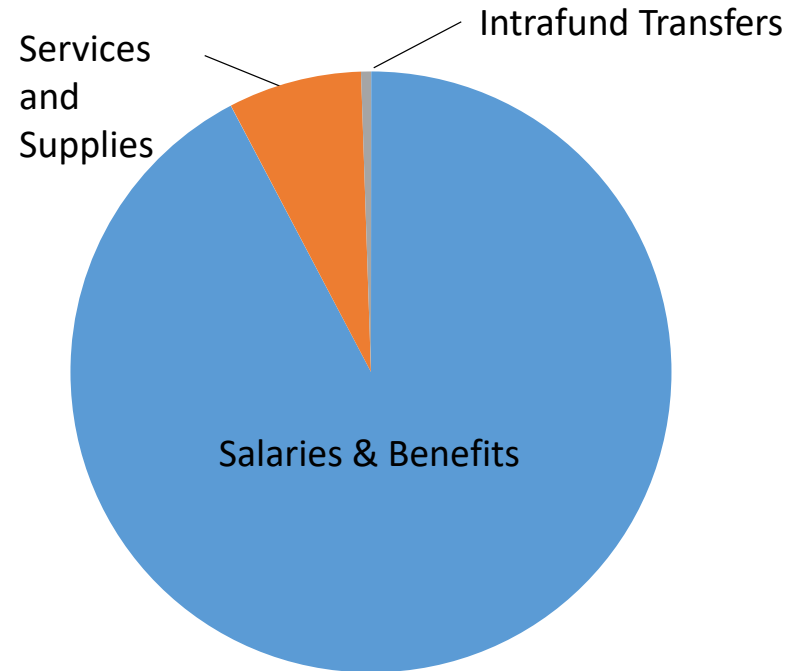
# Surveyor Department Budget: 2020-2021

## Net cost to County

- Estimated \$1,604,355
- 3.7% increase from 2019-2020 budget



2020-2021 CAO  
Recommended Funding

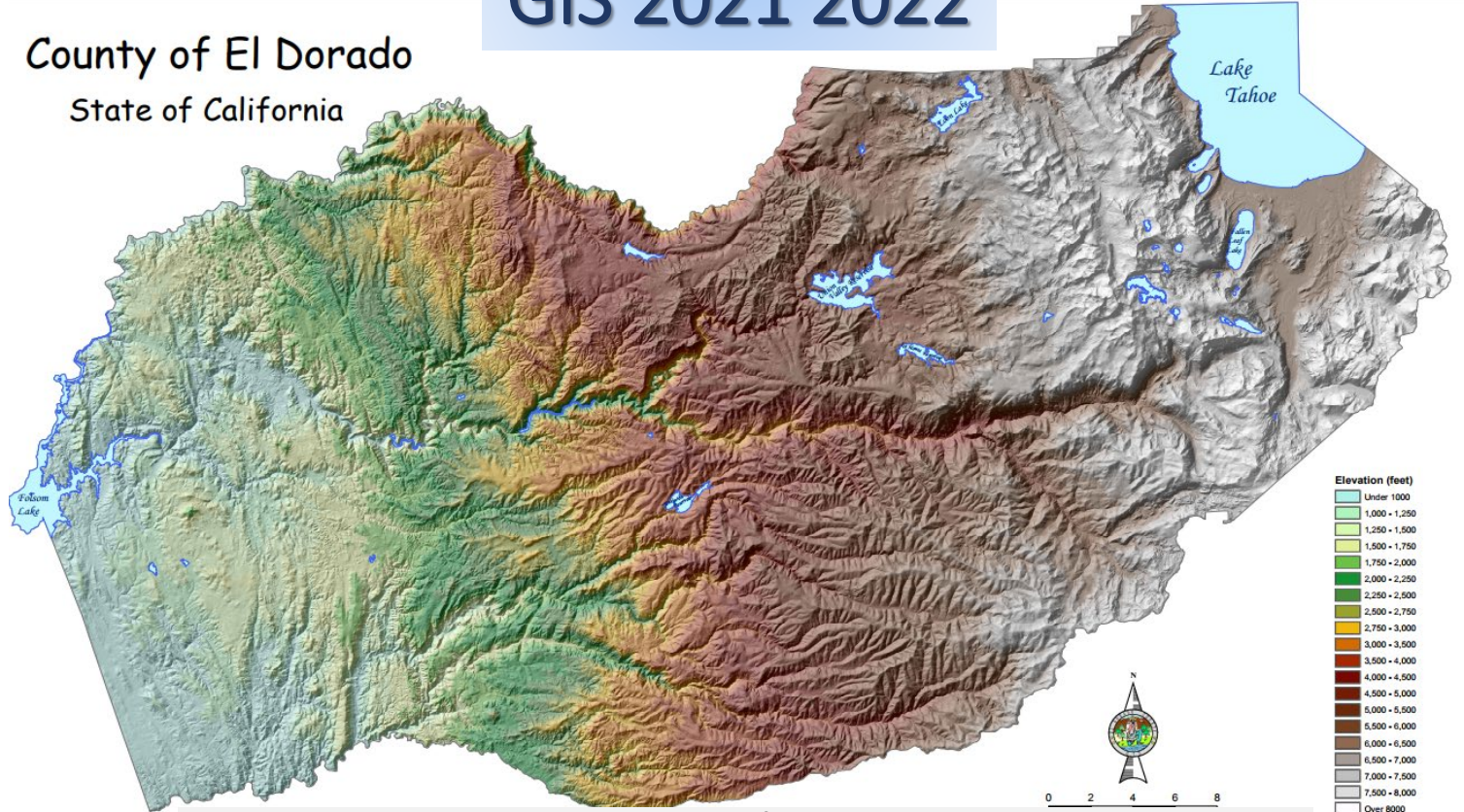


2020-2021 CAO  
Recommended Expenses



# GIS 2021 2022

County of El Dorado  
State of California

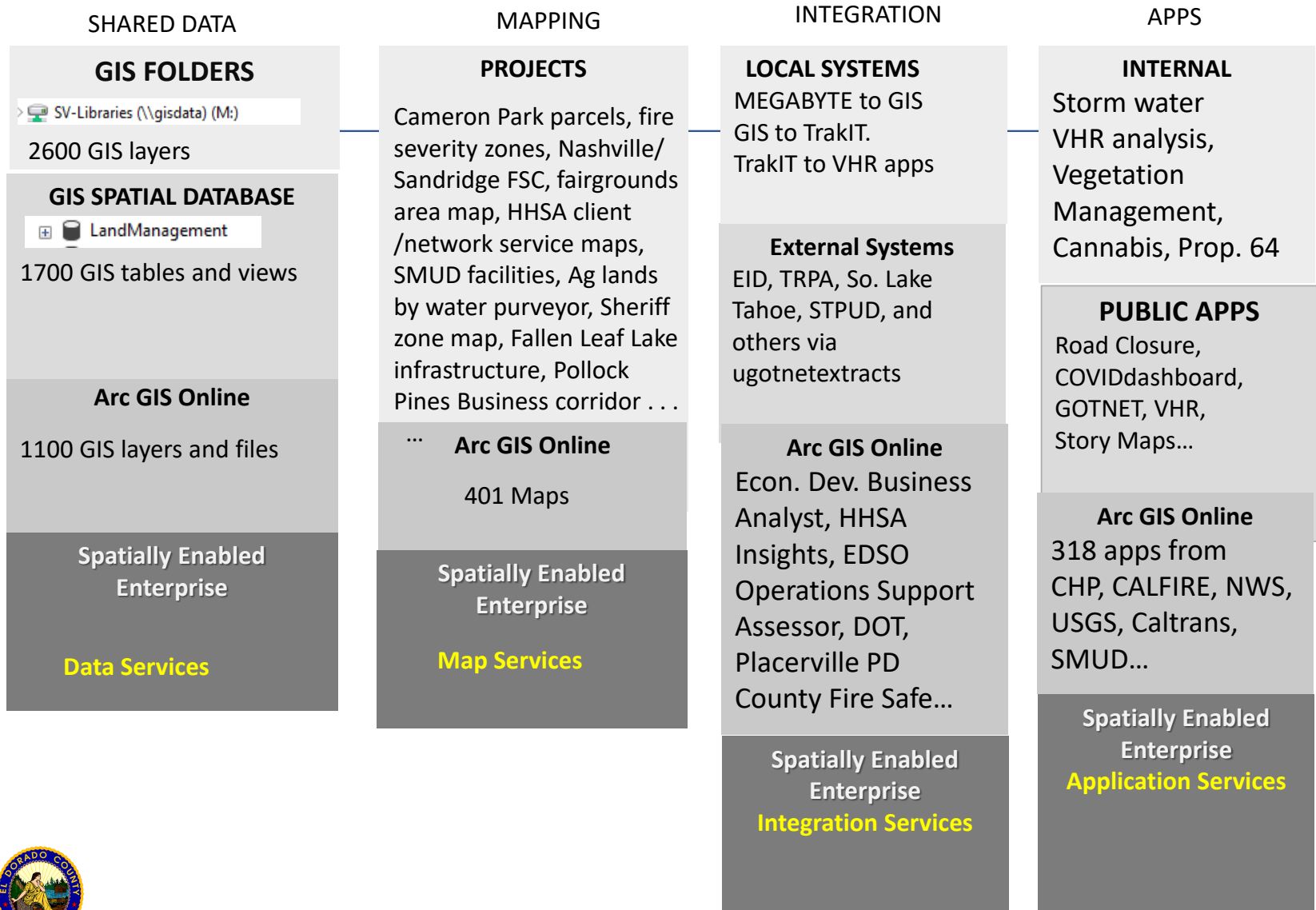


Goal:

**Consolidate and simplify access to GIS resources**

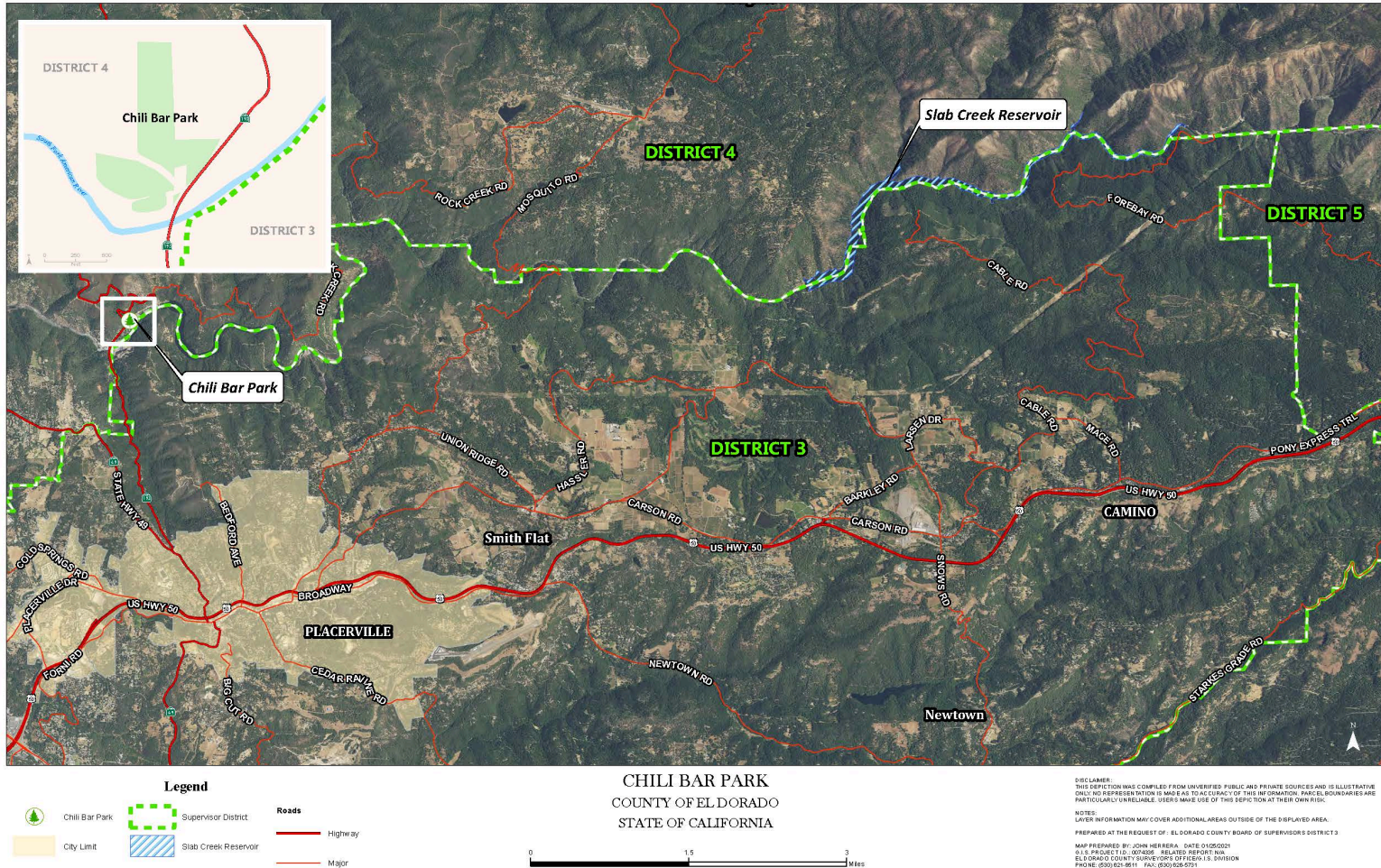


GIS Support: PRODUCTS AND SERVICES – Today.





# Shared Data and Mapping



Parcels and derivatives, roads, waterways, imagery, District boundaries, place names, city boundaries.



**New Requests :**

**Vegetation Management Tahoe Basin, Storm Water dashboard, El Dorado Water Agency Hub Site, River Management , Parks and Trails Hub Site Support, COVID data update application and public dashboard , New Aerials, Hazard Mitigation Grant Program Prop 64, Next Gen. 911, Census 2020, Redistricting, Evacuation Planning, New Emergency Prep Apps, Election Address Updates, TrakIT integration and many more.**

**Involve multiple County departments**

**AND/OR**

**Involve multiple external agencies**

**AND/OR**

**The Public**



# GIS Support: PRODUCTS AND SERVICES – SEE EL DORADO

ado.edcgov.us/portal/home/

Home Gallery Map Scene Groups

Sign In

# SEE EL DORADO

Parcel Research

GIS Downloads

Address Downloads

Address Updates


### Featured Maps and Apps

Parks and Trails

Whitewater Rafting

Trail Exchange Portal


State and Federal Parks





# Parcel Research Application

← → ↻ see-eldorado.edcgov.us/ugotnet/

 **GOTNET** - County of El Dorado, State of California

Beale Air Force Base, Dry Creek, Meadow Vista, Foresthill, Placer, Union Valley Reservoir, Eldorado National Forest, Pollock Pines, El Dorado, Amador, Elk Grove, Stanislaus River, North Fork Mokelumne River, Middle Fork Cosumnes River, American River, Middle River, El Dorado Lake, Lake Tahoe, CARSON

2240 ft, 5479 ft, 10376 ft, 8610 ft, 4056 ft

193, 49, 50, 89, 58

Layer List

Operational layers

- County Outline
- Culture
- Transportation
- Jurisdictions
- Facilities
- Parcels
- Zoning vs Zoning pre 1-15-2016
- Parcels, County Owned
- Water
- Placerville, City Of

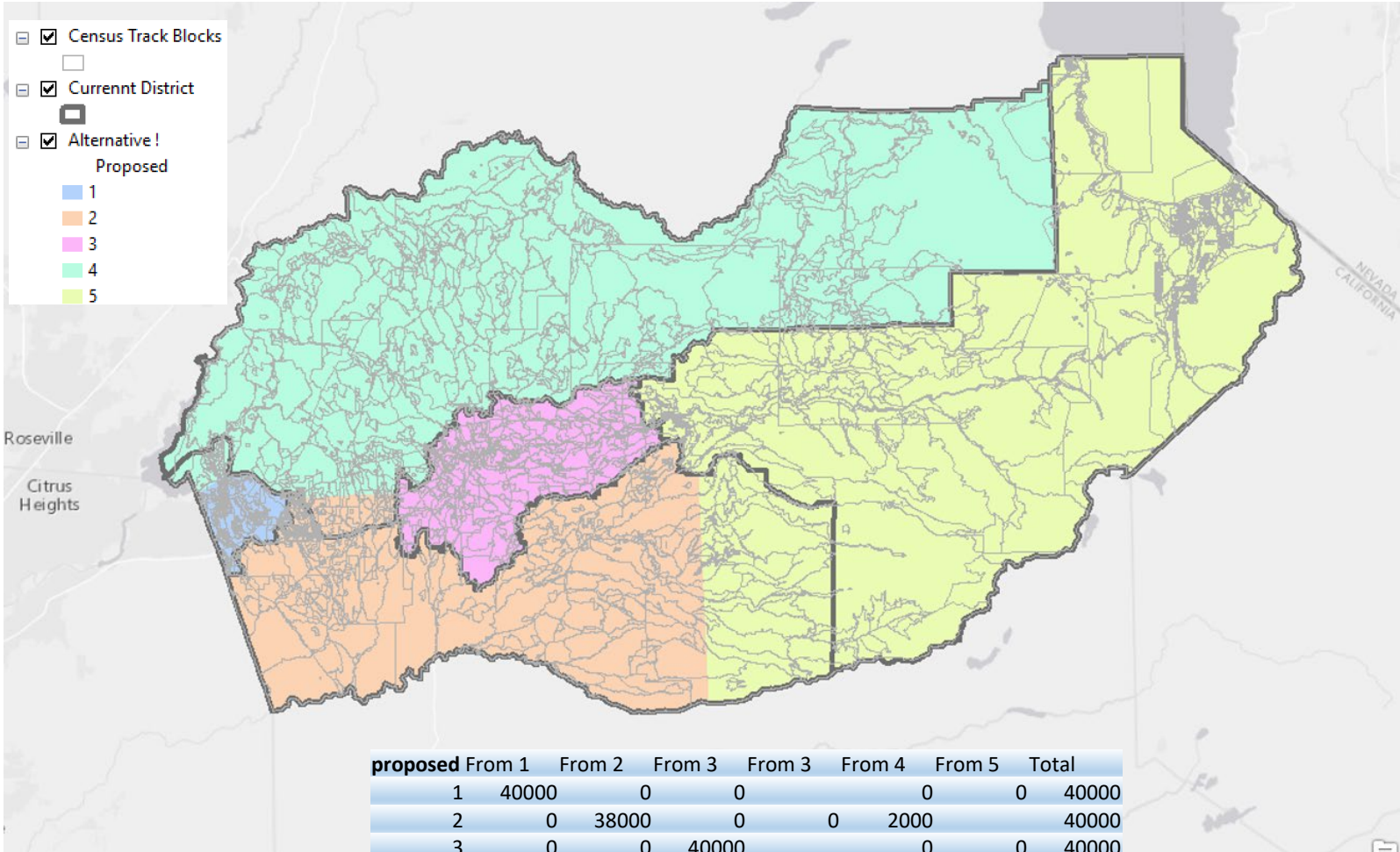
39°07'02"N 121°24'38"W

Activa

Re-District



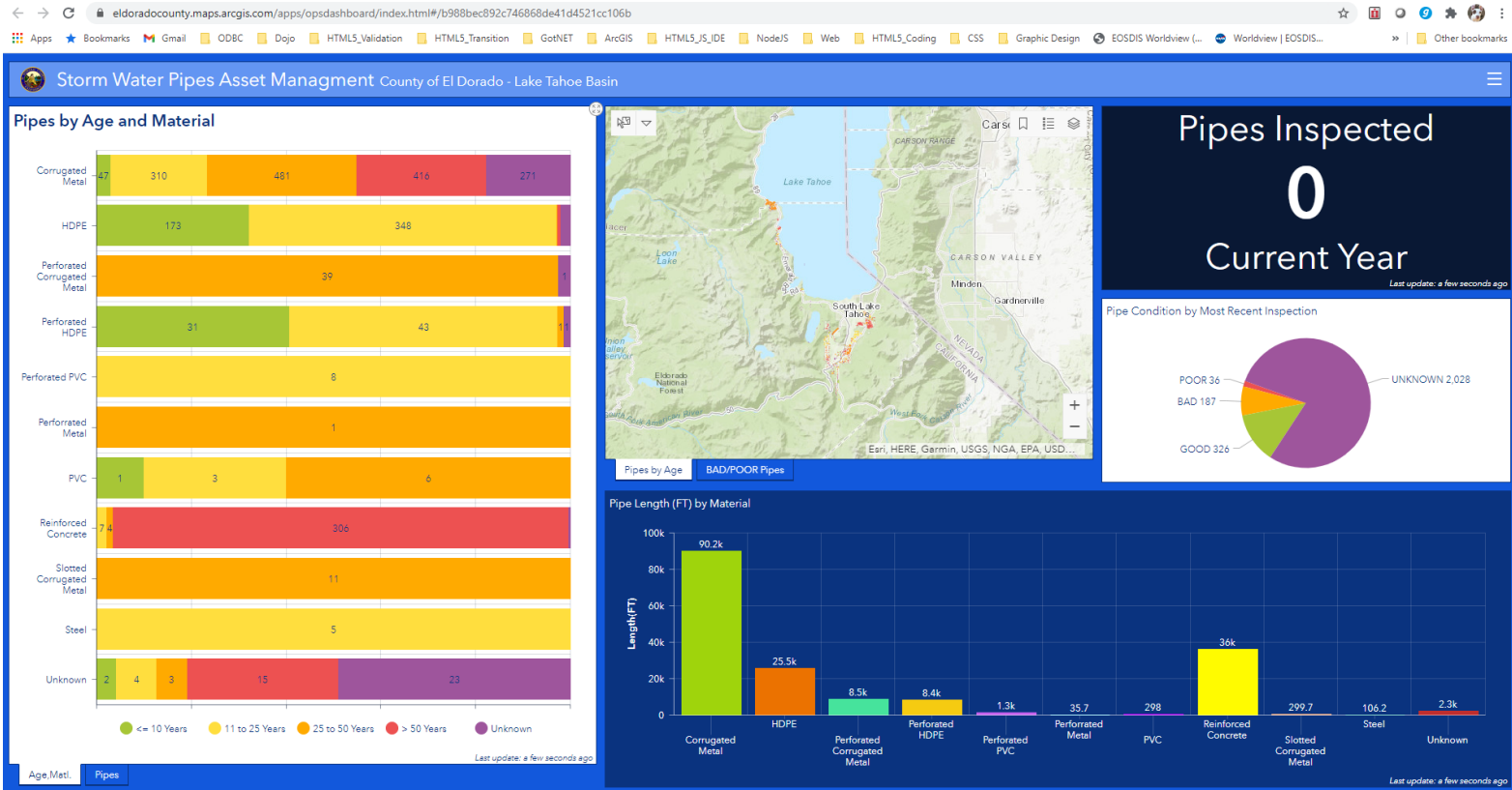
2020 Census Re-districting  
Alternative 1



proposed	From 1	From 2	From 3	From 3	From 4	From 5	Total
1	40000	0	0		0	0	40000
2	0	38000	0	0	2000		40000
3	0	0	40000		0	0	40000
4	4000	0	0	0	36000	0	40000
5	0	4000	0	0	0	36000	40000



# Condition, Extent, and Location



Cannabis  
 COVID  
 VHRs in the Tahoe  
 Redistricting  
 River Use  
 Vegetation Management





## SEE EL DORADO

---

### Economic Development:

- Business Analyst app integration. Maintenance, accessibility, and distribution of quality and timely land use data. [Update Business Park Story Maps.](#)

### Good Governance:

- Integration services for Megabyte, GIS, and TrakIT. [Enterprise-wide GIS support](#)

### Healthy Communities:

- Homeless Outreach app support, maps of HHS services for client/provider access, COVID support, Cannabis. [Continue COVID support, client training.](#)

### Infrastructure:

- Parks, Trails, and Tree Mortality. Maintain GIS roads, TIM zones, TAZ, and Basin Storm Water app. [Hazard Mitigation Grant Funding, El Dorado Water Agency Hub](#)

### Public Safety:

- Road Closure, Homeless applications. Maps for grant funding for fire and fuel reduction. Maps/reports for Fire district consolidation. [County-wide Vegetation Management, Hazard Mitigation Grant Funding, Fire Safe Council mapping and support.](#)



# El Dorado County Surveyor's Office

---

## Questions?

