



LOCATION MAP
 Sheriff's Headquarters
 Public Safety Facility
 GOV15-0003

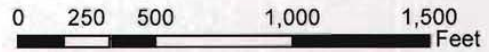


EXHIBIT A

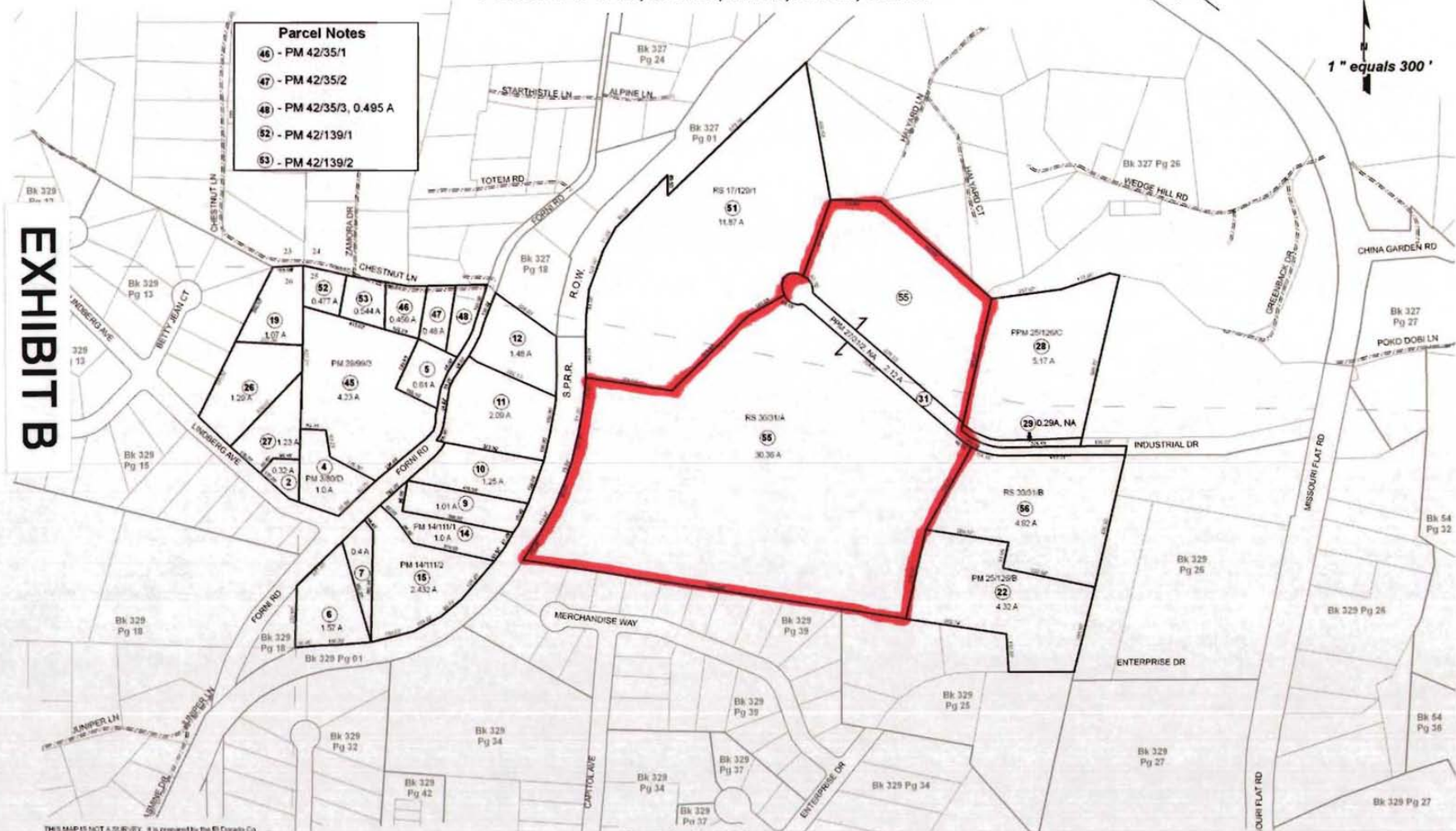
POR'S. SEC'S. 24, 25 & 26, T.10N., R.10E., M.D.M.

329:24



- Parcel Notes**
- 46 - PM 42/35/1
 - 47 - PM 42/35/2
 - 48 - PM 42/35/3, 0.495 A
 - 52 - PM 42/139/1
 - 53 - PM 42/139/2

EXHIBIT B



THIS MAP IS NOT A SURVEY. It is prepared by the El Dorado CA Assessor's office for assessment purposes only. Area calculations and characteristics are not guaranteed. Users should verify items such as dimensions and acreage.

Acreages Are Estimates

Adjacent Map Pages Shown in Grey Text
Assessor's Block Numbers Shown in Ellipses
Assessor's Parcel Numbers Shown in Circles

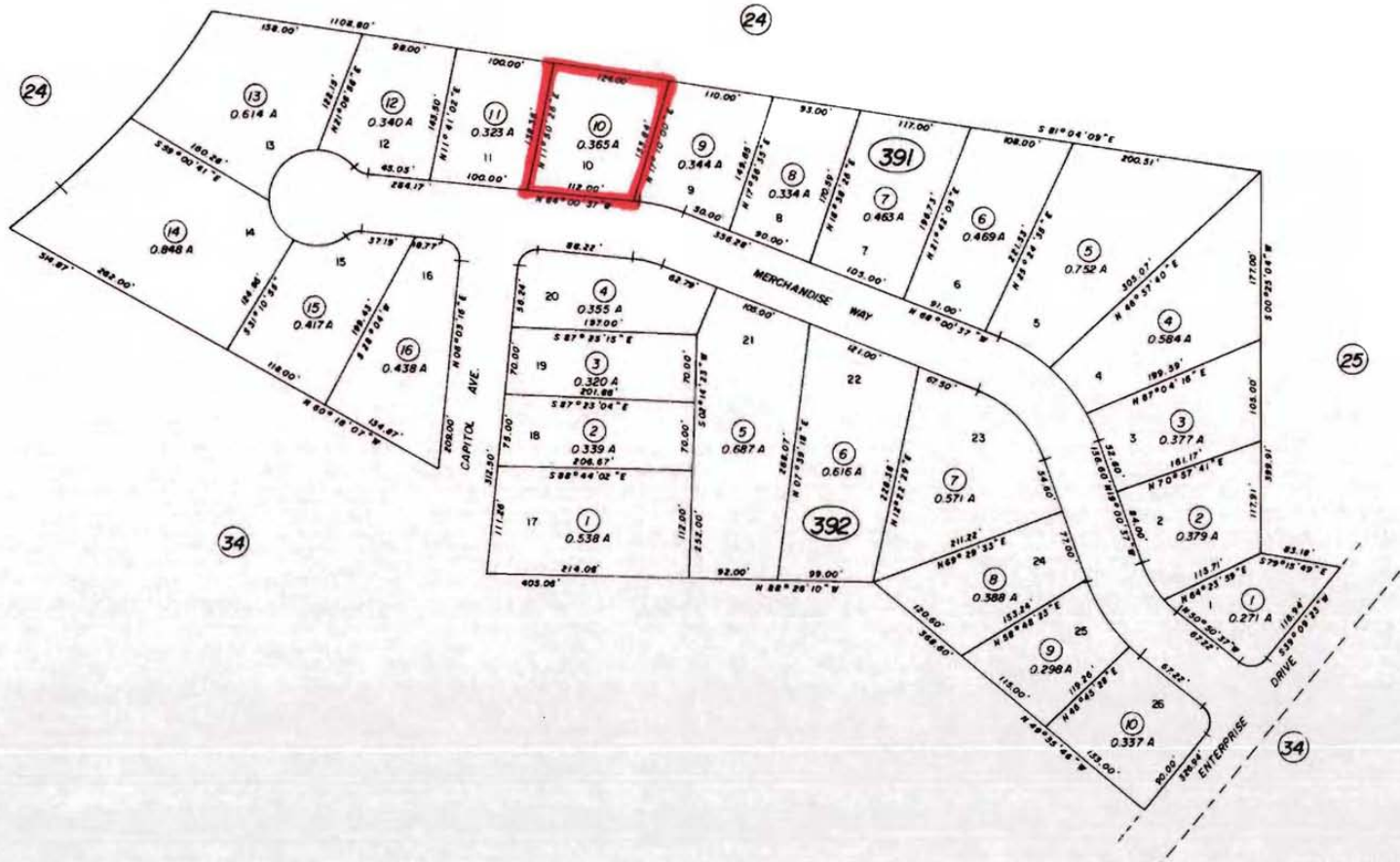
Rev. June 14, 2007

Assessor's Map Bk. 329, Pg. 24
County of El Dorado, CA

POR. SEC. 25, T.10N, R.10E, M.D.M.
 PARK WEST SUBDIVISION UNIT NO. 2
 G-140

Tax Area Code

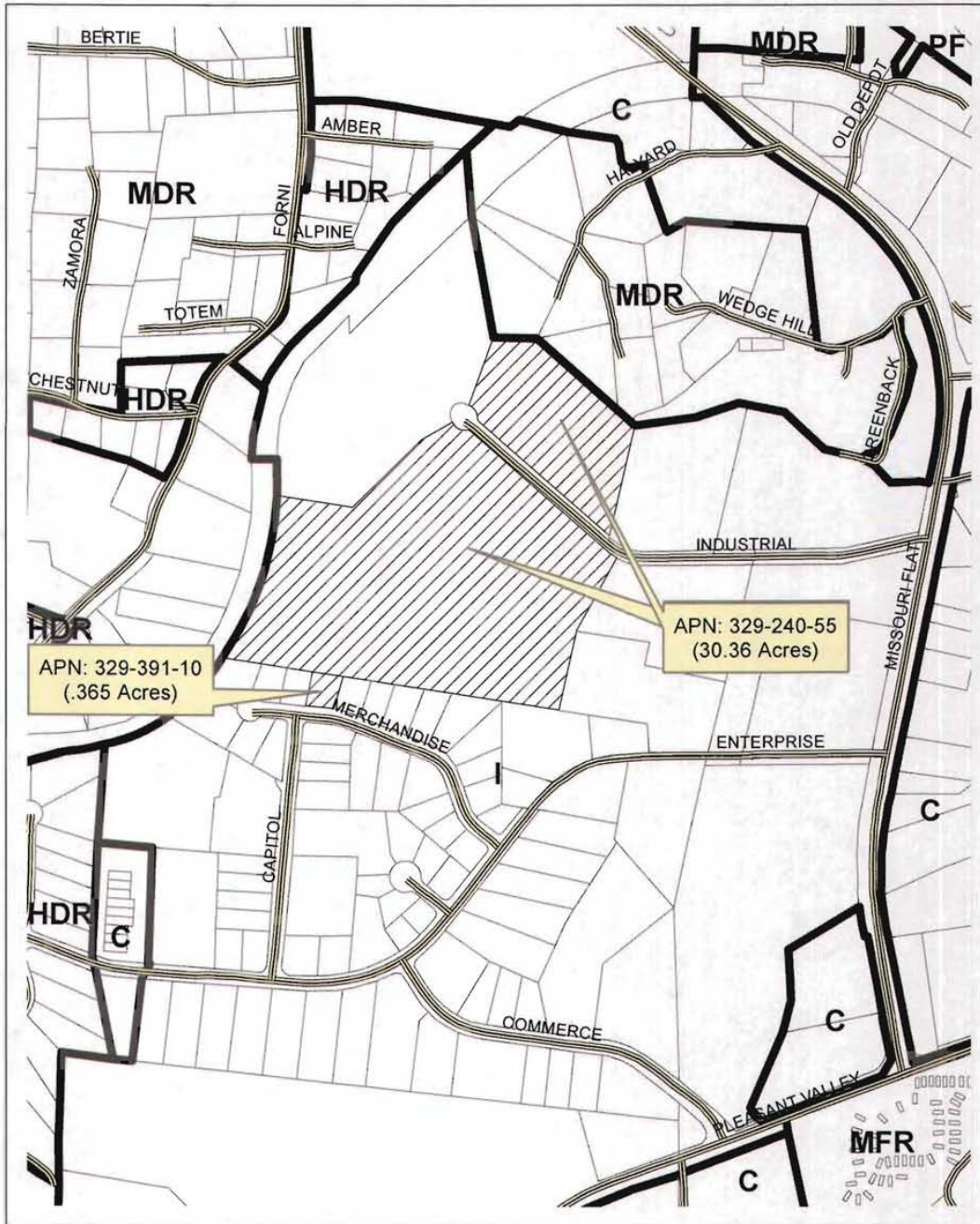
329:39



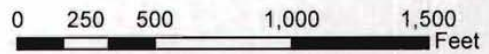
THIS MAP IS NOT A SURVEY. It is prepared by the El Dorado Co. Assessor's office for assessment purposes only.

NOTE - Assessor's Block Numbers Shown in Ellipses
 Assessor's Parcel Numbers Shown in Circles

Assessor's Map Bk. 529 - Pg. 39
 County of El Dorado, California



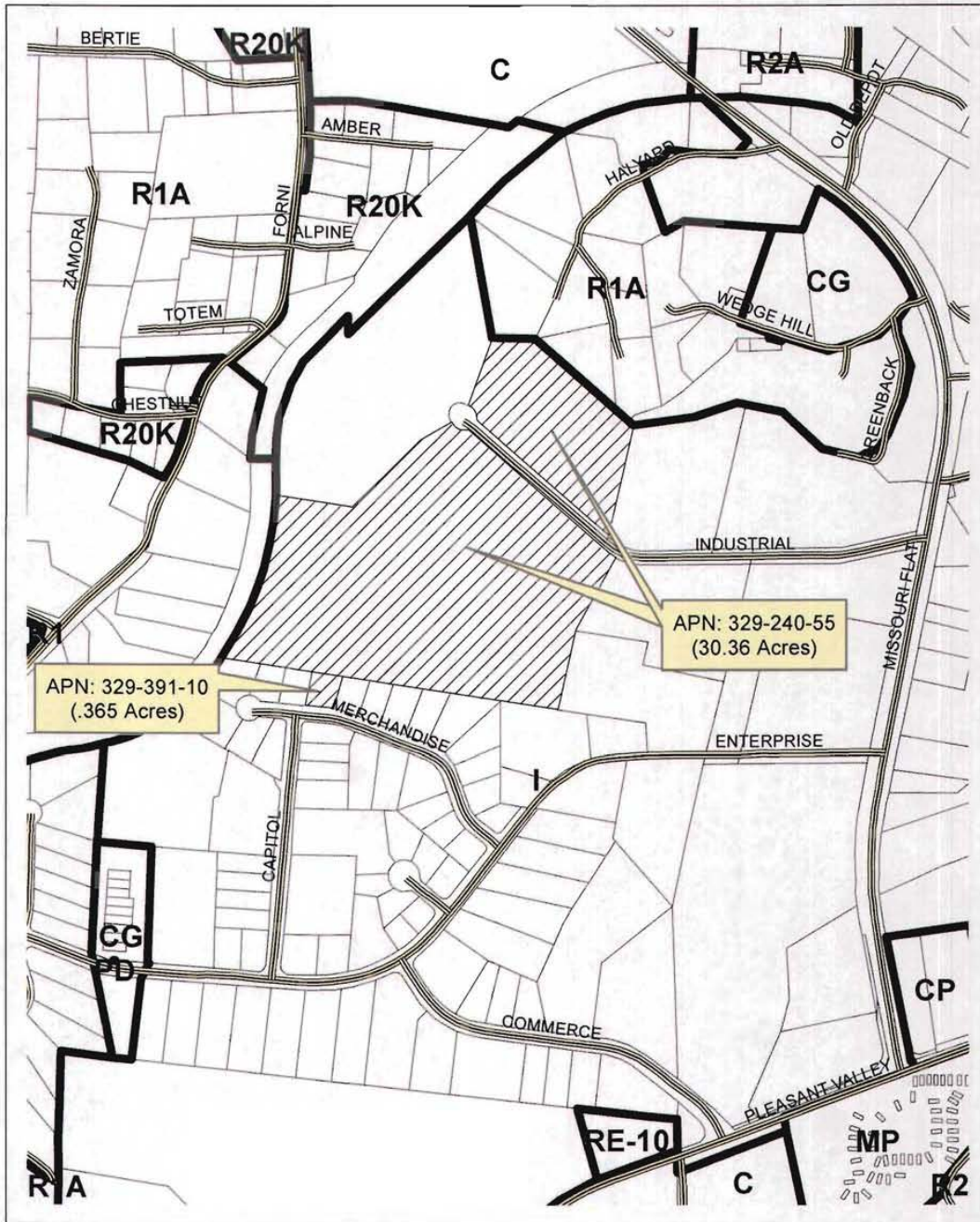
GENERAL PLAN MAP



Sheriff's Headquarters
 Public Safety Facility
 GOV15-0003



EXHIBIT C



ZONING MAP

Sheriff's Headquarters
 Public Safety Facility
 GOV15-0003

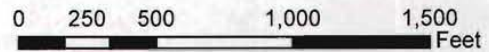


EXHIBIT D