

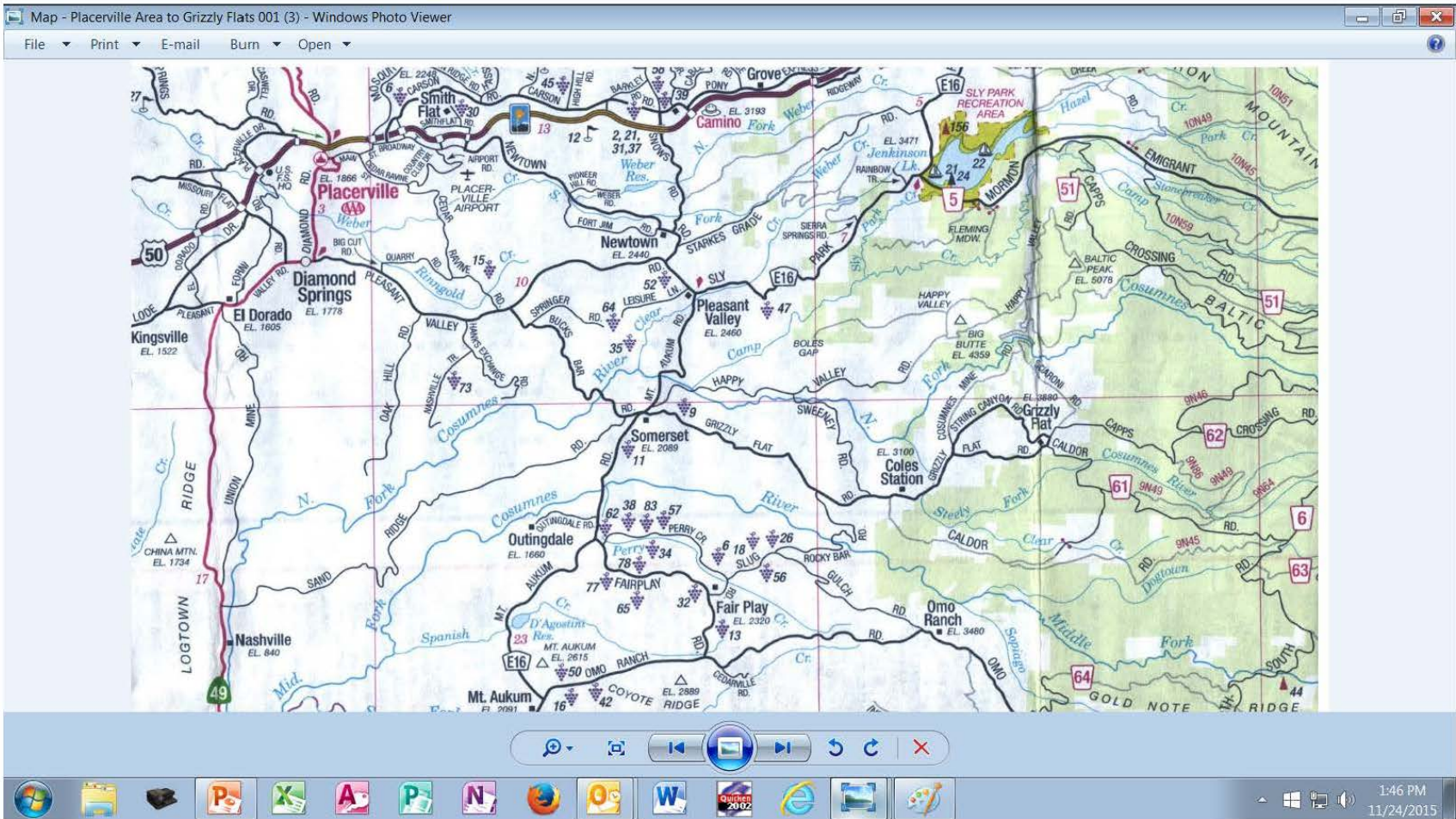


Grizzly Flats Fire Safe Council

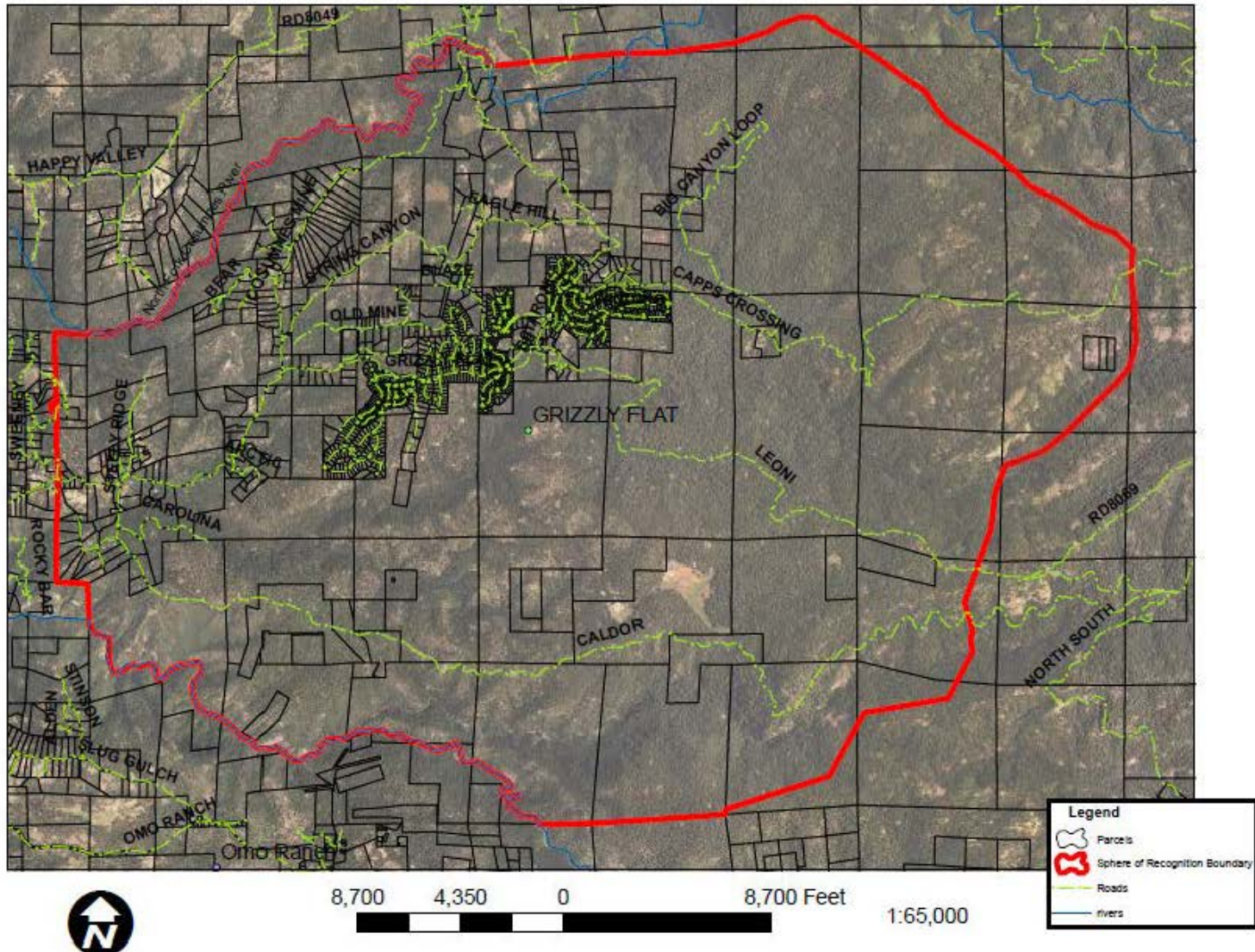
Some History, Projects & Accomplishments 2006-2015

Location Map

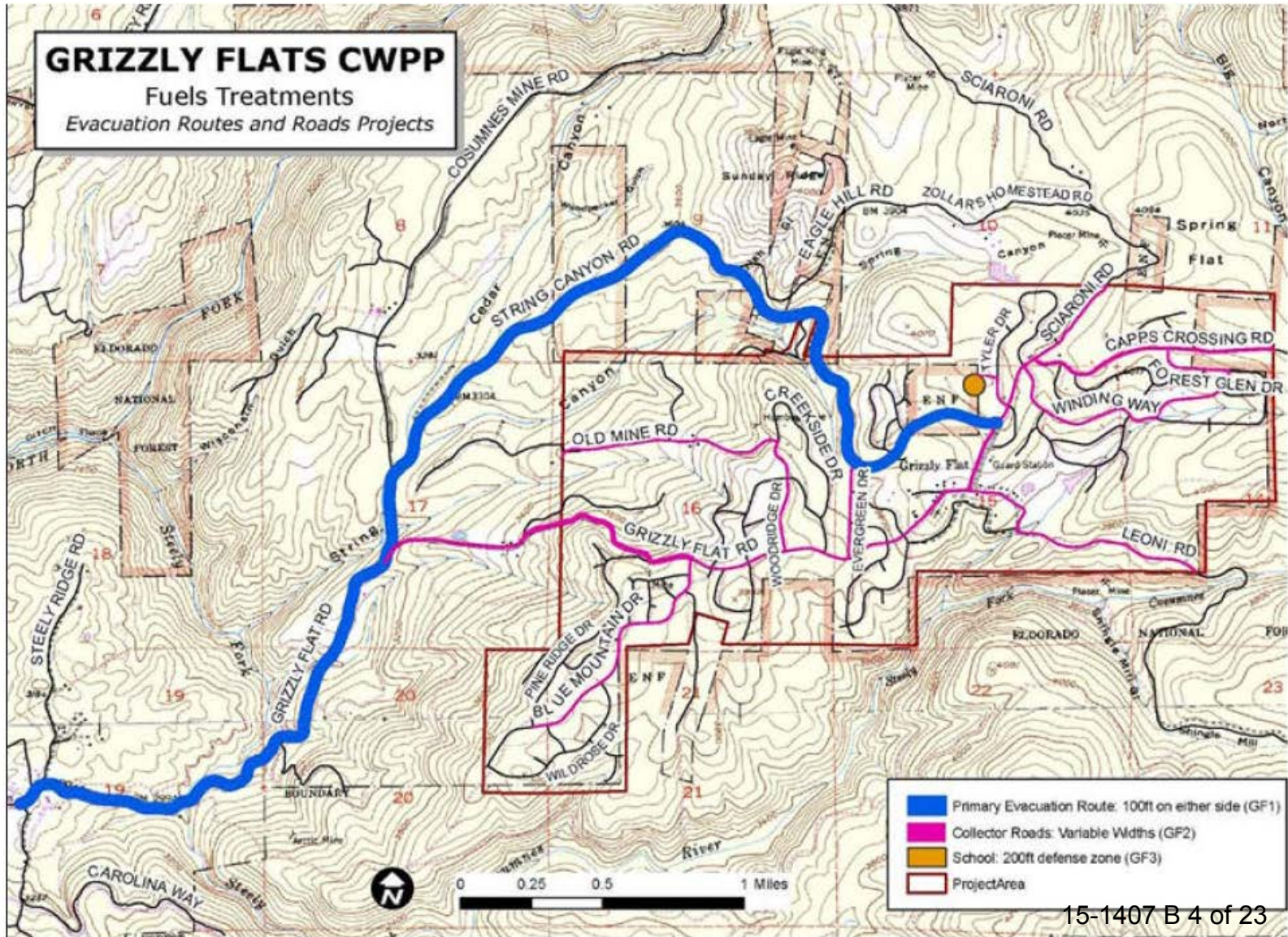
Where's Grizzly Flats???



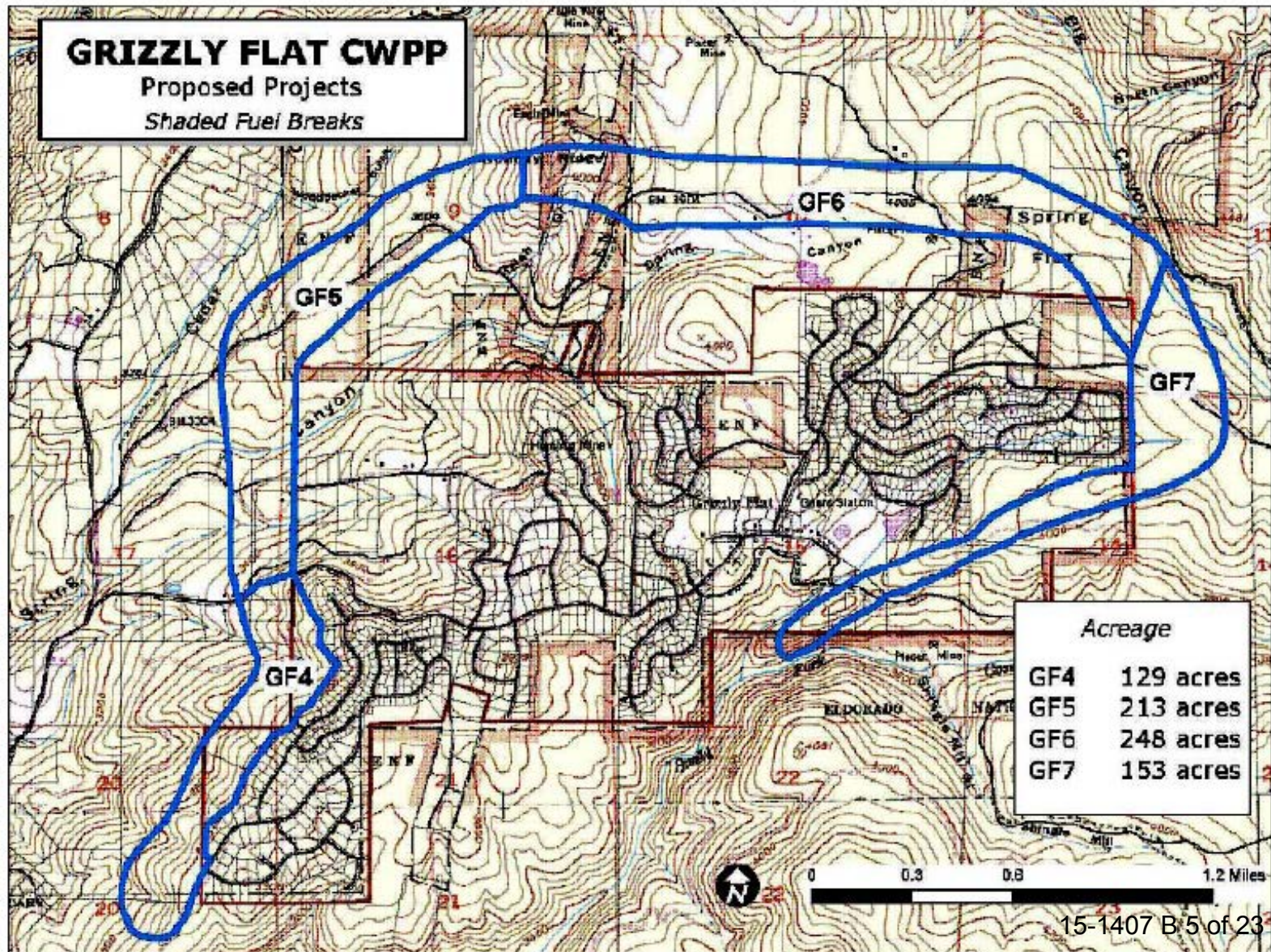
GFFSC Sphere of Recognition - 2015



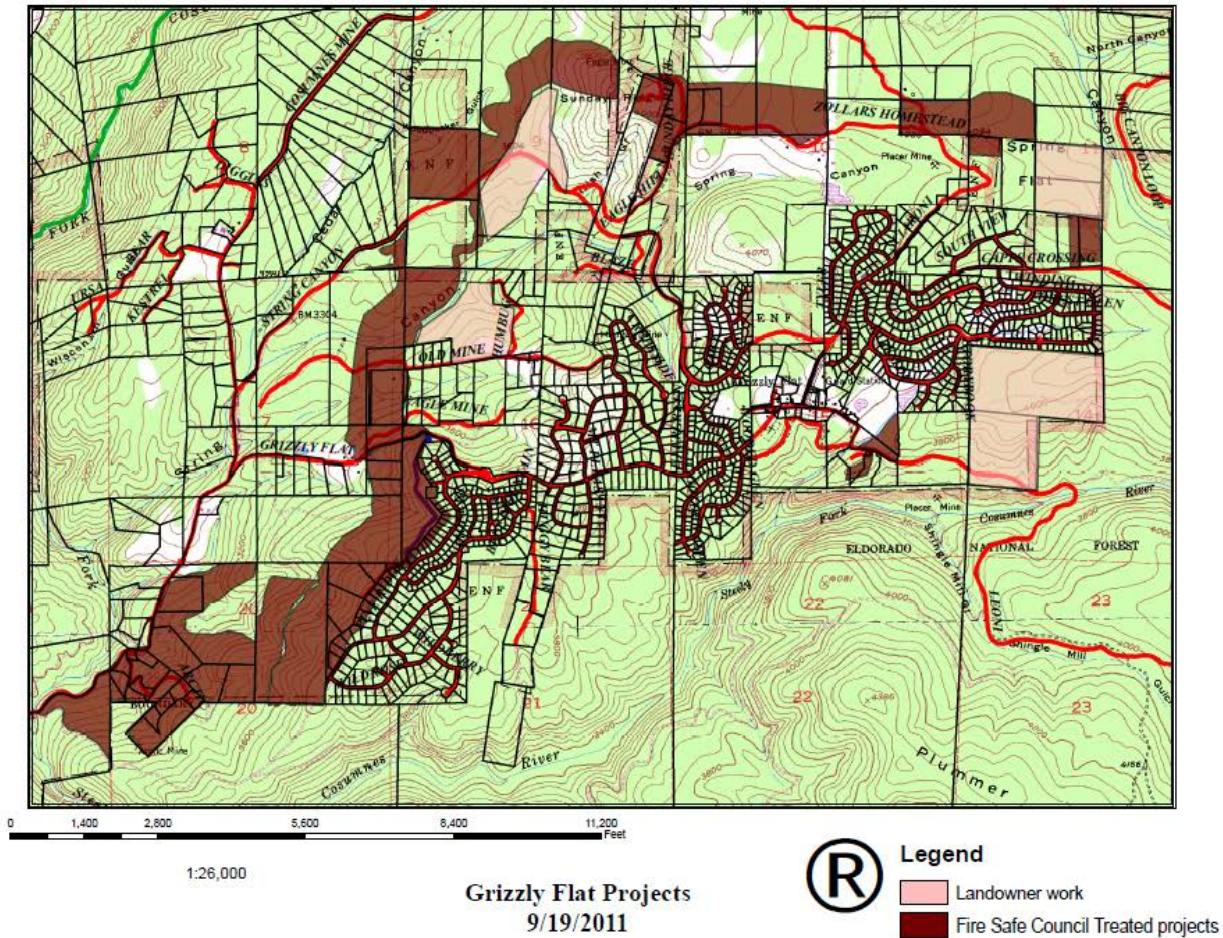
GFFSC 2006 CWPP Evacuation Routes



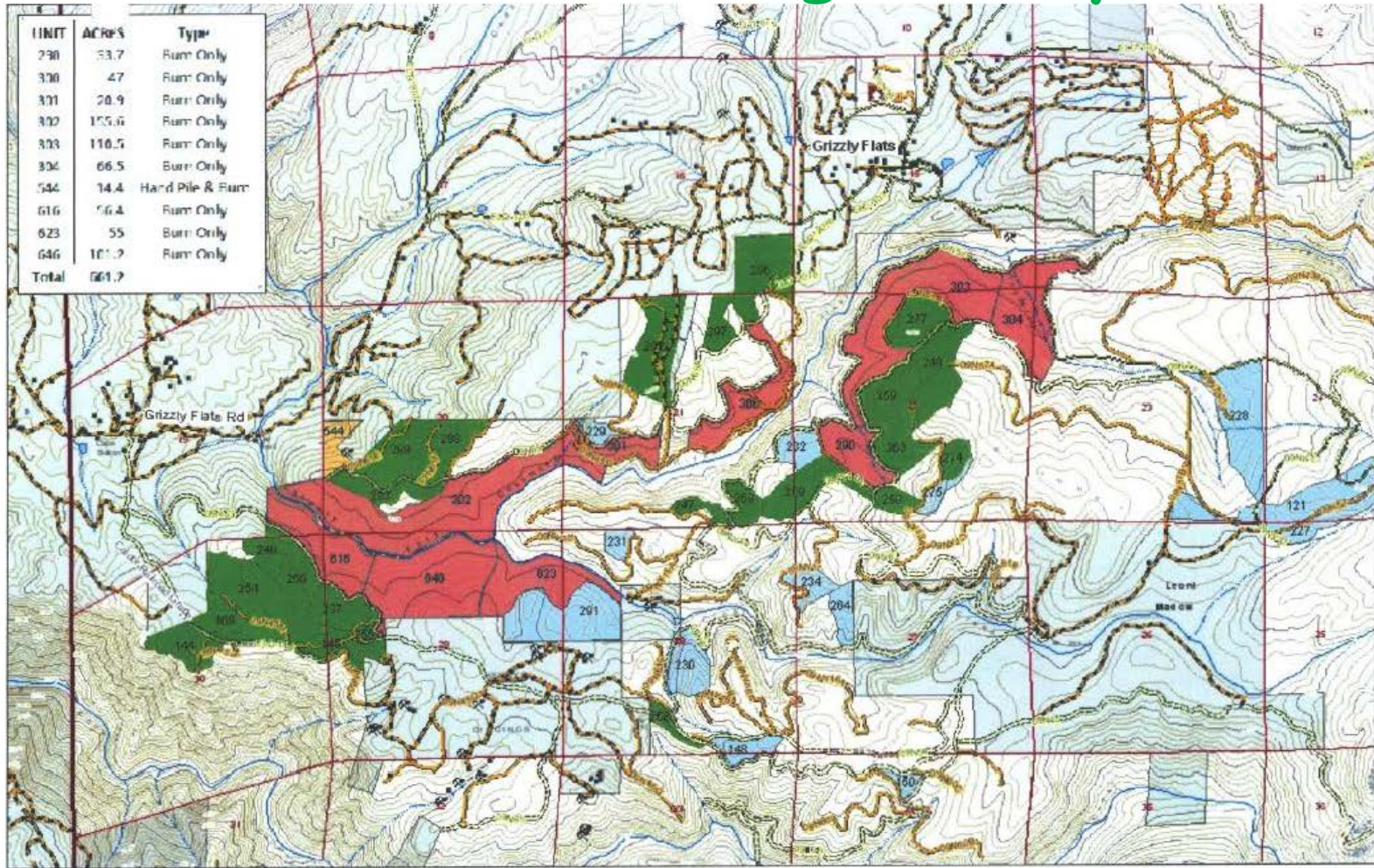
GFFSC 2006 CWPP Shaded Fuel Breaks



GFFSC CWPP Completed Shaded Fuel Breaks - 2011



USFS Work Protecting Grizzly Flats



Last Chance Prescribed Burn Project

Placerville Ranger District
Eldorado National Forest

El Dorado County

T8N R13E

TR 07/21/2011

1:35,000



ChanceRxBurnUnits

- Burn Only
- Hand Treat & Burn
- RxB Complete
- Other Last Chance Units

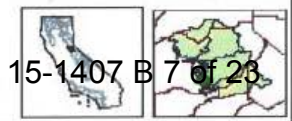
ENland Ownership

- NFS land
- Non-NFS land

Forest Service Facility

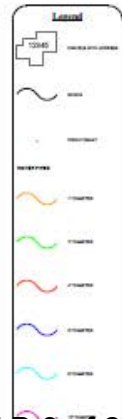
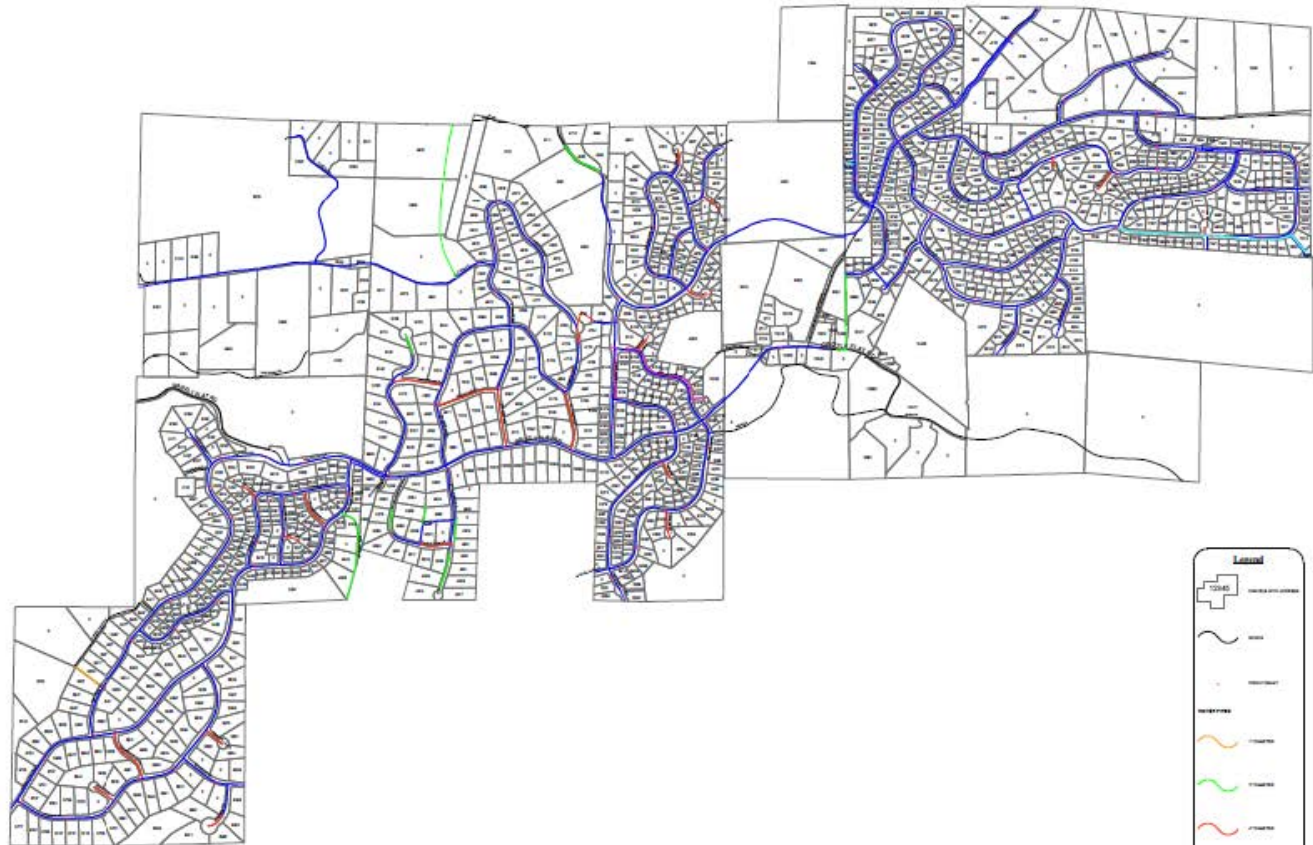
- Structure
- Mine

0 0.3 0.6 1.2 Miles



GFCSD Infrastructure

GRIZZLY FLAT COMMUNITY SERVICES DISTRICT WATER NETWORK



Scale: 1" = 100'

North Arrow

Copyright © 2015 Grizzly Flat Community Services District. All rights reserved.

 The GFFSC membership and community logged 7,739 volunteer hours for fire prevention efforts in the fiscal year 2014-2015

 This equates to \$178,539 of volunteer efforts!

The GFFSC has partnered with the California Conservation Corps (CCC) for Fuel Reduction Projects



Before 15-1407 B 10 of 23



After



Before



After

The Annual GFFSC BBQ Fundraiser was held on July 18, 2015



The 2015 GFFSC annual BBQ/Fundraiser raised over \$7,000; which will help fund their annual projects:

- Administrative expenses related to grant applications
- Public Education efforts
- Community volunteer fuel reduction effort expenses

Along with 250 community members, there were several public officials that attended and supported our efforts



The GFFSC held its annual Community Clean Up event on September 26, 2015

 Several hundred tons of trash, green wood, appliances and green waste were removed from our community - ultimately not being illegally dumped into our National Forest

The GFFSC continues to maintain strong partnerships with:

Multiple El Dorado County Departments, some of which include:

- The Board of Supervisors
- Department of Transportation
- Environmental Management
- Code Enforcement

Pioneer Fire Protection District

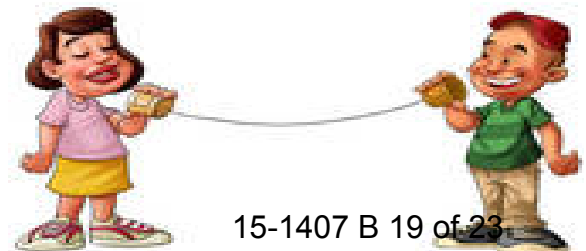
CAL FIRE

U.S. Forest Service

A Lack of Emergency Communication Has Been Resolved!

In October, the GFFSC lead a Grass-Roots effort to support the approval of a cell tower that will provide Verizon Cellular Service to the entire community - greatly enhancing reporting of emergencies; and in turn, enhancing public safety !!!

- October 22- representatives from the GFFSC, Grizzly Flats CSD and members from the community attended the Planning Commission Meeting to support the proposed Verizon Cell Tower.
- It was approved unanimously by the Planning Commission and should be in service by March 2016!!!



The GFFSC recognizes the existing extreme hazardous fuel loading on many undeveloped residential parcels in our community.

Hazardous Wildland Fire Fuels: Understory ladder fuels



Thank You!

The Grizzly Flats Fire Safe Council
thanks the El Dorado County
Board of Supervisors for this
opportunity and their continued support!

Questions?

