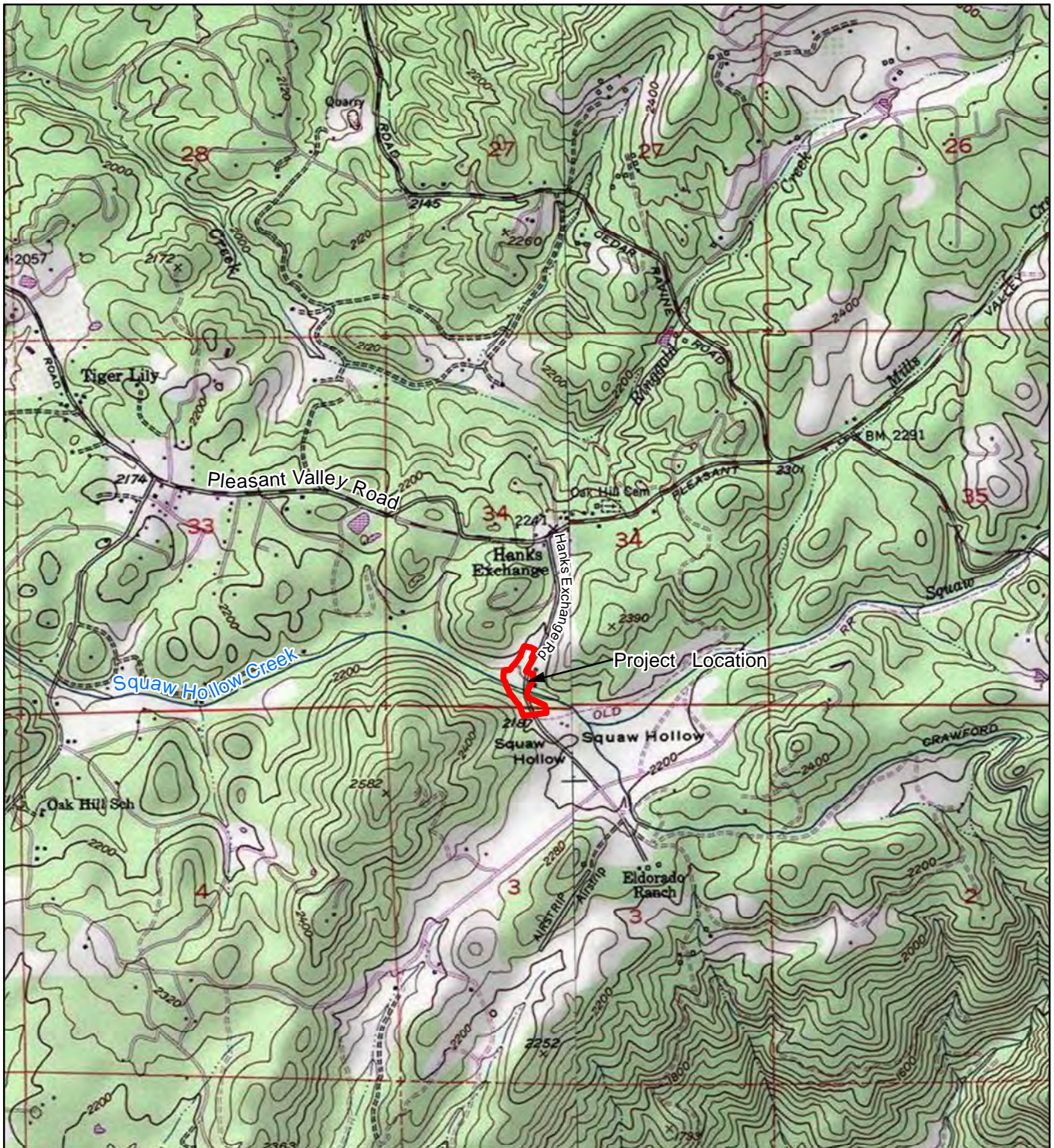


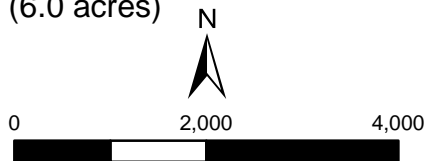
Document Path: T:\Projects\14_148_149_150_EDC_Bridges\14_150_Hanks_Exchange_Bridge\Figure_1_Project_Location_HanksExchange.mxd aminks



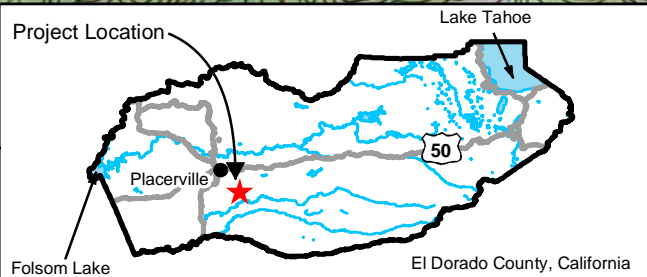
 Project Area (6.0 acres)

Public Land Survey
Sec. 34, T10N, R11E

USGS 7.5 Quad:
Placerville - Revised 1973



1:24,000



Squaw Hollow Creek Bridge (25C0053) Replacement Project

Figure 1
Project Area Location
18-0669 B 1 of 1