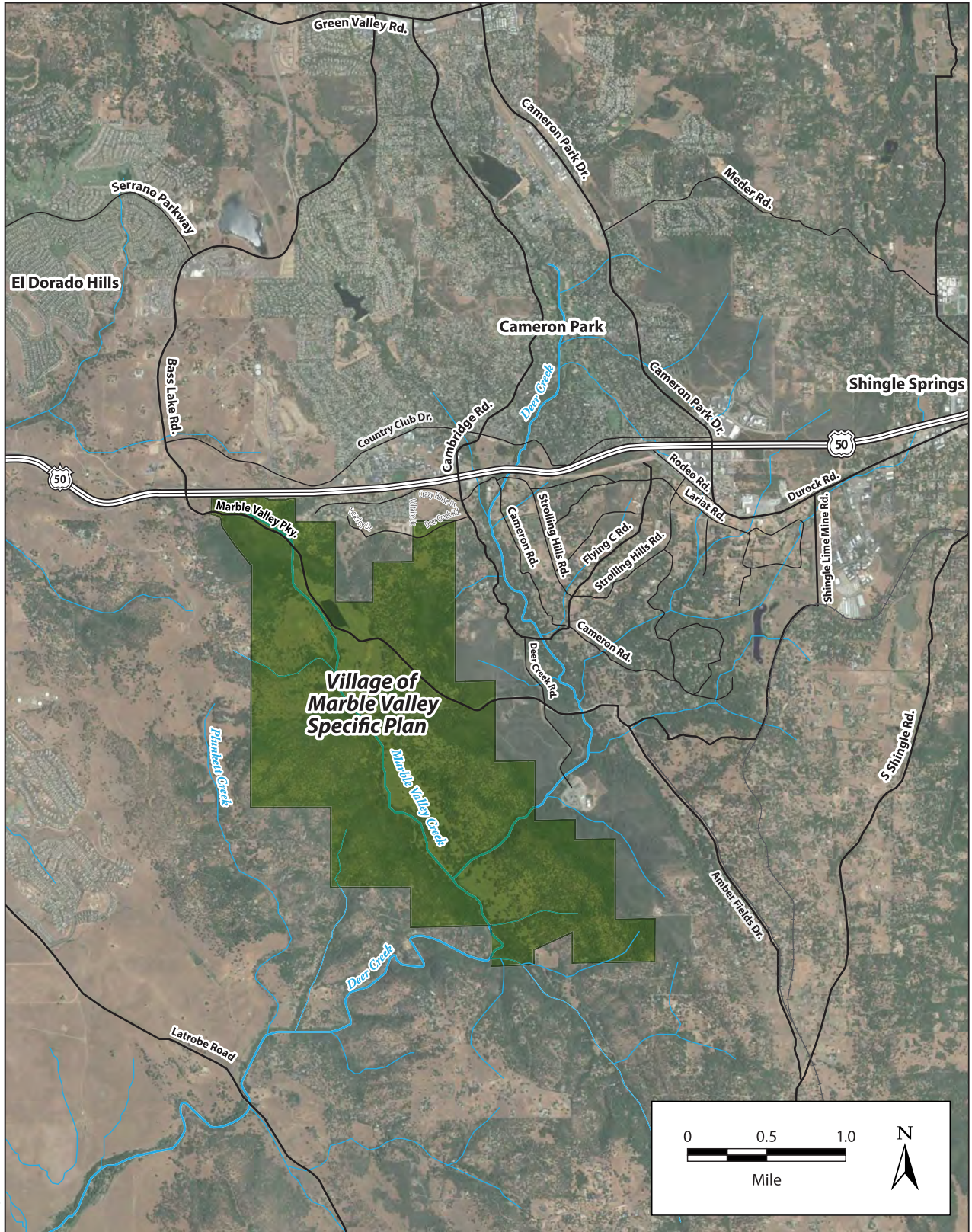


Attachment A

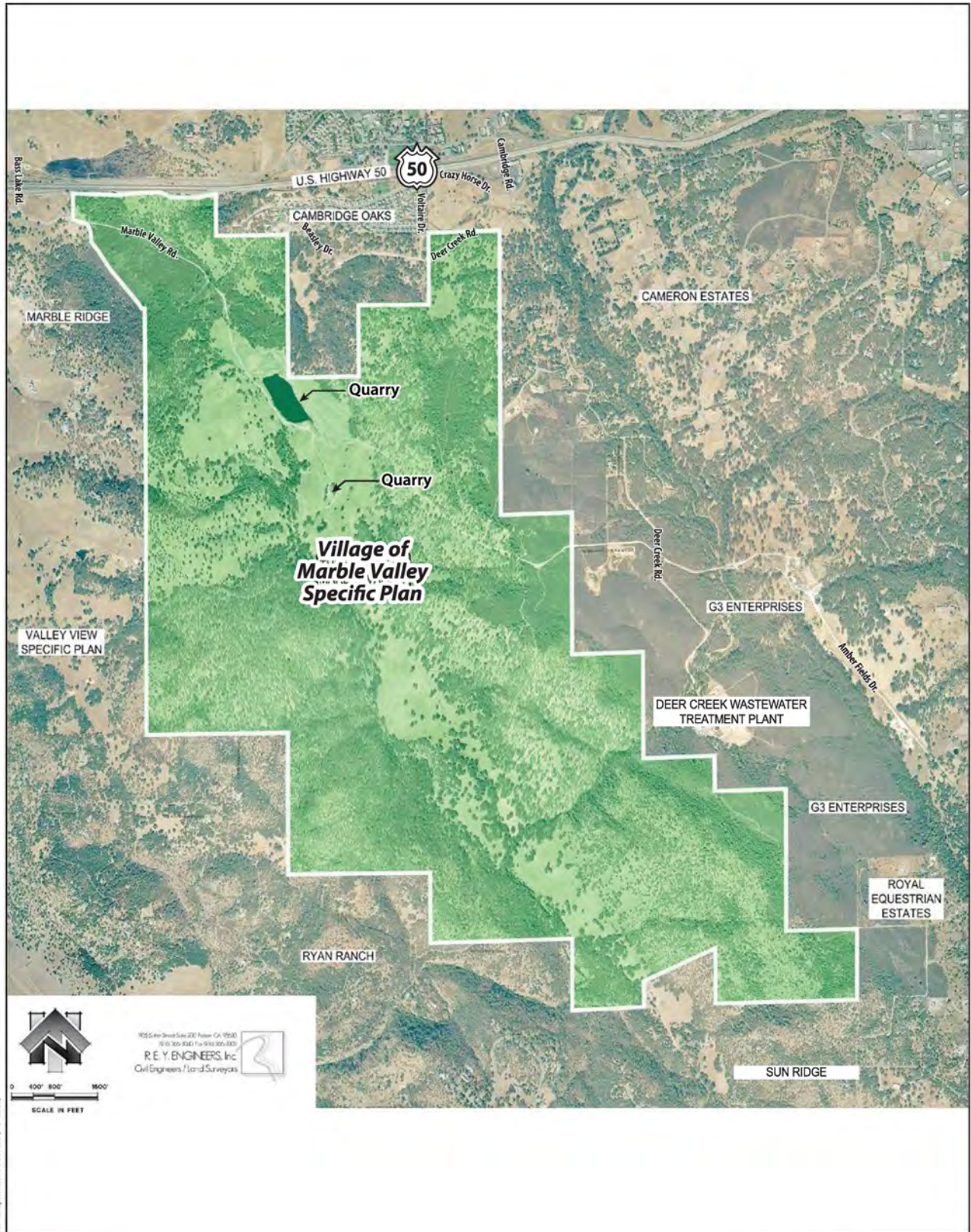
A14-0004/Z14-0006/SP12-0003/DA14-0002/PD14-0005 (Village of Marble Valley Specific Plan) &
A14-0002/Z14-0003/SP12-0001/ DA14-0004/PD14-0003 (Lime Rock Valley Specific Plan)



ICF Graphics... 00667.12 (12/9/21) AB

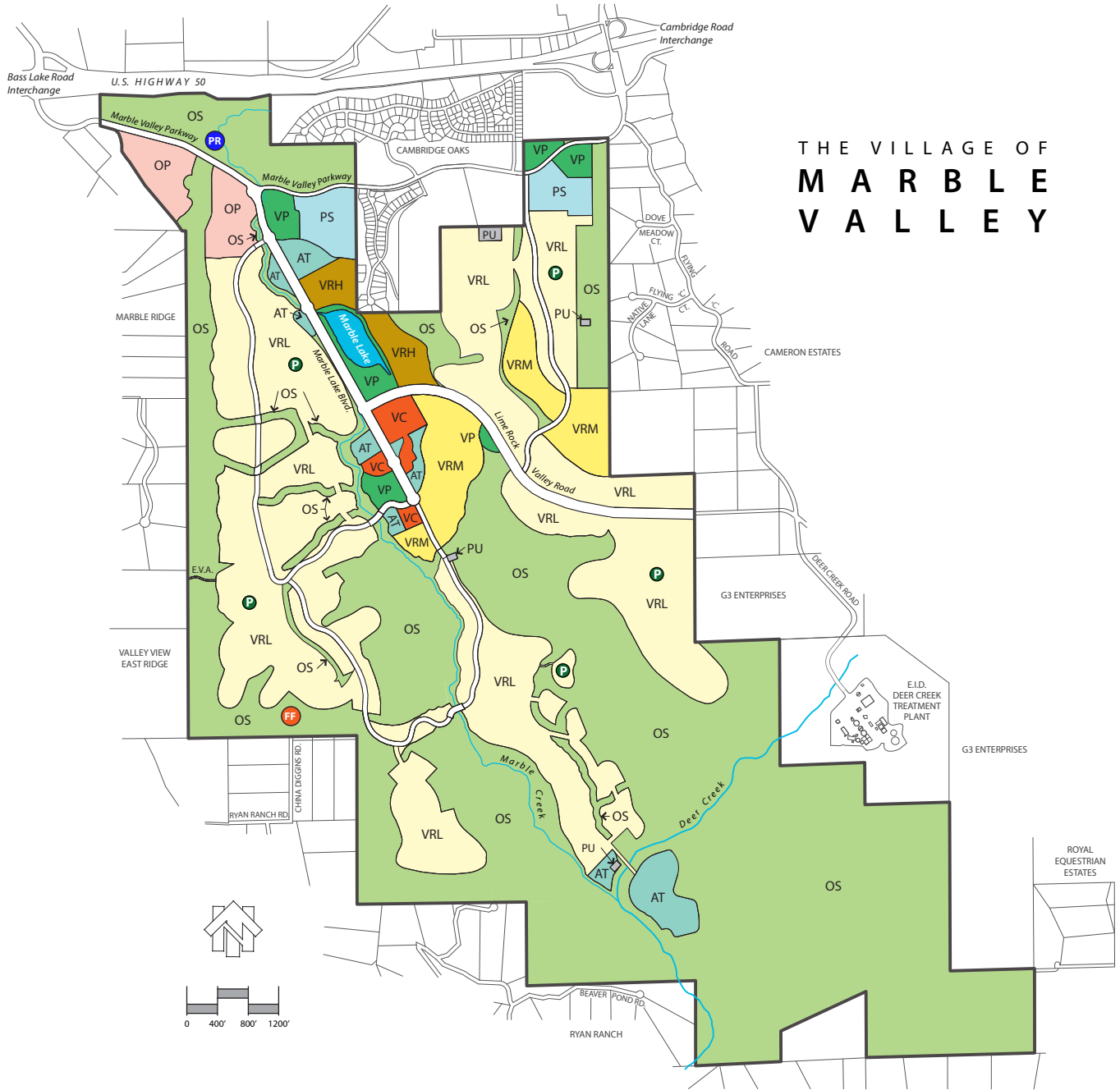


Project Location



Existing Conditions

THE VILLAGE OF MARBLE VALLEY



LAND USE

Residential

- Village Residential Low
- Village Residential Medium
- Village Residential High

Commercial

- Office Park
- Village Commercial

Public Facilities

- Public Utilities
- Public School
- Village Park
- P Neighborhood Park

- FF Future Fire Facility
- PR Park & Ride
- Gated Emergency Vehicle Access

Agriculture/Open Space

- Agritourism
- Open Space

The Village of Marble Valley

Table 3.1: Land Use Summary

Land Use Designation and Density Range [1]	Area (Ac)	% of Total Area	Residential Units	Commercial Area (SF)
Residential				
VRL Village Residential - Low (0.9- 5.0 Du/Ac)	685	29%	1,963	
VRM Village Residential - Medium (5.0 - 12.0 Du/Ac)	84	4%	708	
VRH Village Residential - High (12.0 - 24.0 Du/Ac)	28	1%	501	
<i>Subtotal</i>	797	34%	3,172	
Commercial				
OP Office Park	41	2%		375,000
VC Village Commercial	16	1%	50	100,000
<i>Subtotal</i>	57	3%	50	475,000
Agriculture				
AT Agriculture Tourism	55	2%	14	
Public Facilities				
PS Public School (K-5 or K-8)	35	1%		
VP Village Park [2]	47	2%		
PU Public Utilities	5	0%		
<i>Subtotal</i>	87	3%		
Open Space				
OS Open Space	1,284	55%		
Roads				
Impact Areas and Future Right-of-Way [3]	61	3%		
Totals	2,341	100%	3,236	475,000

[1] Based on average dwelling units per acre for each residential land use designation

[2] Includes Marble Lake

[3] As shown in Figure 3.1 (Land Use Diagram). This area includes actual right-of-way and oak woodland impact areas.