

SERRANO VILLAGE KI & K2, UNIT NO. 2

A PORTION OF SECTION 25, T. 10 N., R. 8 E., MDM.
 BEING LOT A OF SERRANO VILLAGE KI & K2, UNIT NO. 1, SUPD. J-19
 COUNTY OF EL DORADO ***** STATE OF CALIFORNIA
 APRIL 2006 ***** SCALE 1"=100'
 GORE E. THORNE & ASSOCIATES, INC.

LEGEND:

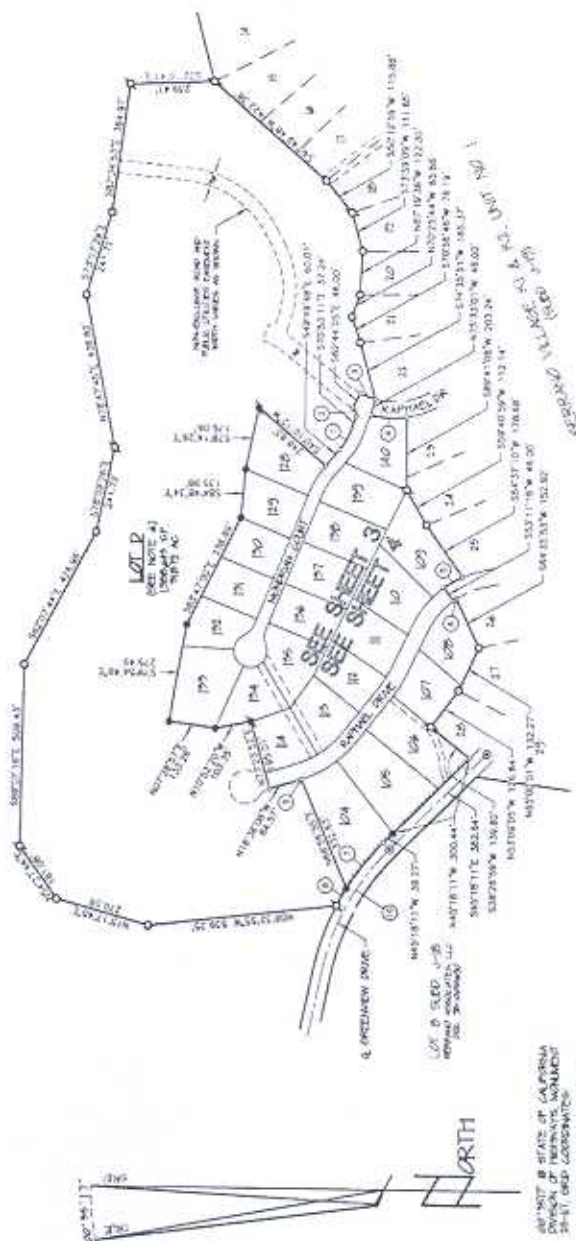
- CONVEYANCE MARK OR MONUMENTAL
- ROAD 3/4" CIP STAMPED "SEE 30M-100"
- ROAD 1/2" CIP STAMPED "SEE 30M-100"
- ASPHALT PAVED W/UT. ROAD MARKER STAMPED "SEE 30M-100"
- SET 3/4" CIP STAMPED "SEE 30M-100"
- SET 1/2" CIP STAMPED "SEE 30M-100"
- CURVE MARKER, SEE DATA TABLE THIS SHEET
- SIDE STORM DRAINAGE CHANNEL
- NON-VOLUNTARY ACCESS

ADJUSTMENT OF PUBLIC EASEMENTS
 NECESSARY TO SECURE ADEQUATE ACCESS TO THE TRACTS FOR THE
 LAND SHOWN HEREIN IS HEREBY DENIED AND REVERSED AND ALL
 PUBLIC EASEMENTS AND RIGHTS OF WAY NOT SHOWN HEREON ARE
 APPROVED. SAID APPROVED EASEMENTS ARE THE FOLLOWING:
 A. THE NON-POLLUTING ROAD & TRAIL UTILITIES EASEMENTS
 SHOWN ON THE PLANS OF SERRANO VILLAGE KI & K2, UNIT NO. 1, SUPD. J-19, AND SERRANO VILLAGE
 KI & K2, UNIT NO. 1, SUPD. J-8

CURVE	CHORD BEARING & DISTANCE	DELTA	MARKS
1	S69°21'20" E	88.51	21103.735, 152.00
2	S46°11'27" W	26.20	61562.54, 30.00
3	S59°53'27" W	45.09	17482.98, 202.00
4	S02°43'43" W	100.76	17578.33, 240.00
5	S07°08'24" W	80.51	17243.59, 175.00
6	S51°02'00" W	108.84	07171.31, 277.00
7	S51°02'00" W	108.84	07171.31, 277.00
8	N00°34'15" W	38.61	16116.91, 25.00
9	N17°23'45" W	8.95	01582.20, 323.00
10	N61°49'51" E	288.27	15703.00, 700.00

NOTES:

1. ALL DIMENSIONS ALONG CURVED LINES ARE CHORD DIMENSIONS.
2. ALL SIDES OF LOTS ARE BEARING AND DISTANCE.
3. ALL DIMENSIONS ALONG STRAIGHT LINES ARE BEARING AND DISTANCE UNLESS OTHERWISE STATED.
4. ALL POINT CORNERS ARE MARKED BY A 3/4" CIP STAMPED "SEE 30M-100".
5. ALL POINT CORNERS ARE MARKED BY A SLAB IN THE TOP FACE OF STAKES OR IN THE TOP FACE OF STAKES OR IN THE TOP FACE OF STAKES OR IN THE TOP FACE OF STAKES AT THE PROJECTIONS OF THE CORNERS UNLESS OTHERWISE SHOWN HEREON.
6. ALL OF THE LOTS SHOWN HEREON ARE SUBJECT TO THE REQUIREMENTS OF THE EL DORADO HILLS DEVELOPMENT PLAN AND THE PROVISIONS OF THE EL DORADO HILLS SUBDIVISION ACT AND THE COUNTY OF EL DORADO ON JANUARY 3, 1992, RECORDED IN BOOK 208 AT PAGE 69 OR THEREAFTER SHOWN HEREON.
7. LOT 2 IS A LARGE LOT CONFORMS WITH FUTURE DIMENSIONS OF VILLAGE KI & K2 AND IS FOR FINANCING.
8. THE AREA CONTAINED WITHIN LOT 10 IS 6799 ACRES.
9. THE AREA CONTAINED WITHIN LOT 12 IS 6799 ACRES.
10. THE AREA CONTAINED WITHIN THIS SUBDIVISION IS 4706 SQUARE ACRES, CONSISTING OF 14 DALLING LOTS AND 5 MISCELLANEOUS LOTS.



REFERENCES:
 ALSO SEE: 20 3-191
 ALSO SEE: 20 3-191

BASIS OF BEARINGS:
 THE MERIDIAN OF THIS SURVEY IS DEFINED TO THAT OF THE DIVISION OF TERRITORIES, WASHINGTON, D.C., AND ADJUSTED TO THE NORTH BEARING OF ALL DISTANCES ARE BEARING AND DISTANCE.

SERRANO VILLAGE KI & K2, UNIT NO. 2

A PORTION OF SECTION 25, T. 10 N., R. 8 E., MPM.
BEING LOT A OF SERRANO VILLAGE KI & K2, UNIT NO. 1, SUBD. J-19
COUNTY OF EL DORADO ***** STATE OF CALIFORNIA
APRIL 2006 ***** SCALE: 1"=60'

NOTES:

1. ALL DIMENSIONS ALONG CURVED LINES ARE GRAND MEASUREMENTS.
2. ALL END OF LOT/LINE AND CORNER/OF LINES ALONG STREET CENTRALLINES ARE MARKED BY AN IRON PIN. ALL OTHER CORNERS ARE MARKED BY STAMPED COPPER NAILS WITH 1/4" DIAMETER POINTS.
3. ALL BEARINGS AND DISTANCES ARE MARKED BY A 3/4" COPPER NAIL.
4. ALL POINT CORNERS ARE MARKED BY A 3/4" COPPER NAIL. THE TOP BACK OF CORNERS ON IN THE TOP CORNER OF LOTS WHERE THERE IS NO SIGNALS, AT THE INTERSECTION OF THE PROPERTY LINE, UNLESS OTHERWISE NOTED.
5. ALL OF THE SURVEYING PERSON ARE SUBJECT TO THE REQUIREMENTS OF THE CALIFORNIA PROFESSIONAL LAND SURVEYORS ACT, THE PROVISIONS OF THE EL DORADO COUNTY LAND SURVEYORS ACT, AND THE COUNTY OF D. ADAMS ON JANUARY 1, 2000, RECORDED IN BOOK 248 AT PAGE 104.
6. LOT D IS A LARGE LOT CONCERNING WITH PLATE CORNERS OF VILLAGE KI & K2 AND IS FOR FUTURE DEVELOPMENT.
7. THE AREA CONTAINED WITHIN LOT H1 IS 8729 SQUARE FEET.
8. THE AREA CONTAINED WITHIN LOT H2 IS 6080 SQUARE FEET.
9. THE AREA CONTAINED WITHIN THIS SUBDIVISION IS 1506 SQUARE FEET CONSISTING OF 24 BUILDING LOTS AND 3 UNDEVELOPED LOTS.

REFERENCES:

- 1. SUBD. J-19, RD 8-40
- 2. SUBD. J-19, RD 8-40
- 3. SUBD. J-19, RD 8-40

BOB E. THORNE & ASSOCIATES, INC.

PL-C LEGEND

- 1. COMPLETE POINT NO. INFORMATION
- 2. REMAINING POINT CORNERS ARE NOT TO A
- 3. FOUND 3/4" COP STAMPED "ICE SAND-1000"
- 4. FOUND 1/4" COP STAMPED "ICE SAND-1000"
- 5. FOUND 1/4" COP STAMPED "ICE SAND-1000"
- 6. FOUND 1/4" COP STAMPED "ICE SAND-1000"
- 7. FOUND 1/4" COP STAMPED "ICE SAND-1000"
- 8. FOUND 1/4" COP STAMPED "ICE SAND-1000"
- 9. FOUND 1/4" COP STAMPED "ICE SAND-1000"
- 10. FOUND 1/4" COP STAMPED "ICE SAND-1000"
- 11. FOUND 1/4" COP STAMPED "ICE SAND-1000"
- 12. FOUND 1/4" COP STAMPED "ICE SAND-1000"
- 13. FOUND 1/4" COP STAMPED "ICE SAND-1000"
- 14. FOUND 1/4" COP STAMPED "ICE SAND-1000"
- 15. FOUND 1/4" COP STAMPED "ICE SAND-1000"
- 16. FOUND 1/4" COP STAMPED "ICE SAND-1000"
- 17. FOUND 1/4" COP STAMPED "ICE SAND-1000"
- 18. FOUND 1/4" COP STAMPED "ICE SAND-1000"
- 19. FOUND 1/4" COP STAMPED "ICE SAND-1000"
- 20. FOUND 1/4" COP STAMPED "ICE SAND-1000"
- 21. FOUND 1/4" COP STAMPED "ICE SAND-1000"
- 22. FOUND 1/4" COP STAMPED "ICE SAND-1000"
- 23. FOUND 1/4" COP STAMPED "ICE SAND-1000"
- 24. FOUND 1/4" COP STAMPED "ICE SAND-1000"
- 25. FOUND 1/4" COP STAMPED "ICE SAND-1000"
- 26. FOUND 1/4" COP STAMPED "ICE SAND-1000"
- 27. FOUND 1/4" COP STAMPED "ICE SAND-1000"
- 28. FOUND 1/4" COP STAMPED "ICE SAND-1000"
- 29. FOUND 1/4" COP STAMPED "ICE SAND-1000"
- 30. FOUND 1/4" COP STAMPED "ICE SAND-1000"
- 31. FOUND 1/4" COP STAMPED "ICE SAND-1000"
- 32. FOUND 1/4" COP STAMPED "ICE SAND-1000"
- 33. FOUND 1/4" COP STAMPED "ICE SAND-1000"
- 34. FOUND 1/4" COP STAMPED "ICE SAND-1000"
- 35. FOUND 1/4" COP STAMPED "ICE SAND-1000"
- 36. FOUND 1/4" COP STAMPED "ICE SAND-1000"
- 37. FOUND 1/4" COP STAMPED "ICE SAND-1000"
- 38. FOUND 1/4" COP STAMPED "ICE SAND-1000"
- 39. FOUND 1/4" COP STAMPED "ICE SAND-1000"
- 40. FOUND 1/4" COP STAMPED "ICE SAND-1000"
- 41. FOUND 1/4" COP STAMPED "ICE SAND-1000"
- 42. FOUND 1/4" COP STAMPED "ICE SAND-1000"
- 43. FOUND 1/4" COP STAMPED "ICE SAND-1000"
- 44. FOUND 1/4" COP STAMPED "ICE SAND-1000"
- 45. FOUND 1/4" COP STAMPED "ICE SAND-1000"
- 46. FOUND 1/4" COP STAMPED "ICE SAND-1000"
- 47. FOUND 1/4" COP STAMPED "ICE SAND-1000"
- 48. FOUND 1/4" COP STAMPED "ICE SAND-1000"
- 49. FOUND 1/4" COP STAMPED "ICE SAND-1000"
- 50. FOUND 1/4" COP STAMPED "ICE SAND-1000"
- 51. FOUND 1/4" COP STAMPED "ICE SAND-1000"
- 52. FOUND 1/4" COP STAMPED "ICE SAND-1000"
- 53. FOUND 1/4" COP STAMPED "ICE SAND-1000"
- 54. FOUND 1/4" COP STAMPED "ICE SAND-1000"
- 55. FOUND 1/4" COP STAMPED "ICE SAND-1000"
- 56. FOUND 1/4" COP STAMPED "ICE SAND-1000"
- 57. FOUND 1/4" COP STAMPED "ICE SAND-1000"
- 58. FOUND 1/4" COP STAMPED "ICE SAND-1000"
- 59. FOUND 1/4" COP STAMPED "ICE SAND-1000"
- 60. FOUND 1/4" COP STAMPED "ICE SAND-1000"
- 61. FOUND 1/4" COP STAMPED "ICE SAND-1000"
- 62. FOUND 1/4" COP STAMPED "ICE SAND-1000"
- 63. FOUND 1/4" COP STAMPED "ICE SAND-1000"
- 64. FOUND 1/4" COP STAMPED "ICE SAND-1000"
- 65. FOUND 1/4" COP STAMPED "ICE SAND-1000"
- 66. FOUND 1/4" COP STAMPED "ICE SAND-1000"
- 67. FOUND 1/4" COP STAMPED "ICE SAND-1000"
- 68. FOUND 1/4" COP STAMPED "ICE SAND-1000"
- 69. FOUND 1/4" COP STAMPED "ICE SAND-1000"
- 70. FOUND 1/4" COP STAMPED "ICE SAND-1000"
- 71. FOUND 1/4" COP STAMPED "ICE SAND-1000"
- 72. FOUND 1/4" COP STAMPED "ICE SAND-1000"
- 73. FOUND 1/4" COP STAMPED "ICE SAND-1000"
- 74. FOUND 1/4" COP STAMPED "ICE SAND-1000"
- 75. FOUND 1/4" COP STAMPED "ICE SAND-1000"
- 76. FOUND 1/4" COP STAMPED "ICE SAND-1000"
- 77. FOUND 1/4" COP STAMPED "ICE SAND-1000"
- 78. FOUND 1/4" COP STAMPED "ICE SAND-1000"
- 79. FOUND 1/4" COP STAMPED "ICE SAND-1000"
- 80. FOUND 1/4" COP STAMPED "ICE SAND-1000"
- 81. FOUND 1/4" COP STAMPED "ICE SAND-1000"
- 82. FOUND 1/4" COP STAMPED "ICE SAND-1000"
- 83. FOUND 1/4" COP STAMPED "ICE SAND-1000"
- 84. FOUND 1/4" COP STAMPED "ICE SAND-1000"
- 85. FOUND 1/4" COP STAMPED "ICE SAND-1000"
- 86. FOUND 1/4" COP STAMPED "ICE SAND-1000"
- 87. FOUND 1/4" COP STAMPED "ICE SAND-1000"
- 88. FOUND 1/4" COP STAMPED "ICE SAND-1000"
- 89. FOUND 1/4" COP STAMPED "ICE SAND-1000"
- 90. FOUND 1/4" COP STAMPED "ICE SAND-1000"
- 91. FOUND 1/4" COP STAMPED "ICE SAND-1000"
- 92. FOUND 1/4" COP STAMPED "ICE SAND-1000"
- 93. FOUND 1/4" COP STAMPED "ICE SAND-1000"
- 94. FOUND 1/4" COP STAMPED "ICE SAND-1000"
- 95. FOUND 1/4" COP STAMPED "ICE SAND-1000"
- 96. FOUND 1/4" COP STAMPED "ICE SAND-1000"
- 97. FOUND 1/4" COP STAMPED "ICE SAND-1000"
- 98. FOUND 1/4" COP STAMPED "ICE SAND-1000"
- 99. FOUND 1/4" COP STAMPED "ICE SAND-1000"
- 100. FOUND 1/4" COP STAMPED "ICE SAND-1000"



CURVE DATA TABLE

LINE	LENGTH	BEARING	CHORD	DELTA	MARKER
1	620.75 54.54	60.51	127.83 35	23.00	
2	545.38 55.76	9.30	127.83 35	23.00	
3	162.03 25.26	201.84	17.26 09	23.00	
4	162.03 25.26	118.38	17.26 09	23.00	
5	162.03 25.26	165.84	17.26 09	23.00	
6	162.03 25.26	165.84	17.26 09	23.00	
7	162.03 25.26	165.84	17.26 09	23.00	
8	162.03 25.26	165.84	17.26 09	23.00	
9	162.03 25.26	165.84	17.26 09	23.00	
10	162.03 25.26	165.84	17.26 09	23.00	
11	162.03 25.26	165.84	17.26 09	23.00	
12	162.03 25.26	165.84	17.26 09	23.00	
13	162.03 25.26	165.84	17.26 09	23.00	
14	162.03 25.26	165.84	17.26 09	23.00	
15	162.03 25.26	165.84	17.26 09	23.00	
16	162.03 25.26	165.84	17.26 09	23.00	
17	162.03 25.26	165.84	17.26 09	23.00	
18	162.03 25.26	165.84	17.26 09	23.00	
19	162.03 25.26	165.84	17.26 09	23.00	
20	162.03 25.26	165.84	17.26 09	23.00	
21	162.03 25.26	165.84	17.26 09	23.00	
22	162.03 25.26	165.84	17.26 09	23.00	
23	162.03 25.26	165.84	17.26 09	23.00	
24	162.03 25.26	165.84	17.26 09	23.00	

LOT B SLOD J-19
SERRANO VILLAGE KI & K2
UNIT NO. 1
(SERR. J-19)

COMPARTMENT OF PUBLIC WORKS
COUNTY OF EL DORADO
SERRANO VILLAGE KI & K2
UNIT NO. 1
(SERR. J-19)

BASIS OF BEARINGS:
THE MERIDIAN OF THIS SURVEY IS DEFINED AS THAT MERIDIAN WHICH HAS AN AZIMUTH BEARING OF 340° 51' 14.21\"/>

20717 B STATE OF CALIFORNIA
DIVISION OF REVENUE ADJUTANT
STATE OF CALIFORNIA
NO. 7994948 03.24.2010

20717 B STATE OF CALIFORNIA
DIVISION OF REVENUE ADJUTANT
STATE OF CALIFORNIA
NO. 7994948 03.24.2010

20717 B STATE OF CALIFORNIA
DIVISION OF REVENUE ADJUTANT
STATE OF CALIFORNIA
NO. 7994948 03.24.2010