

PARKING SCHEDULE

LOCATION/USE	QTY
ACCESSIBLE STALL**	
PATROL/STAFF (9X18) *ACCESSIBLE PARKING	1
PATROL/STAFF (9X18) ACCESSIBLE PARKING	1
PUBLIC PARKING (9X18) *ACCESSIBLE	1
PUBLIC PARKING (9X18) ACCESSIBLE	3
	6
AMBULATORY STALL**	
PATROL PARKING (10X18) * DESIGNATED	1
PUBLIC PARKING (10X18) *AMBULATORY ACCESSIBLE	1
	2
STANDARD STALL	
EQUIPMENT STORAGE PARKING (9X18)	33
EVIDENCE PARKING (9X18)	7
EVIDENCE PARKING LOADING (12X18)	1
PATROL PARKING (9X18)	5
PATROL PARKING (12X18)	7
PATROL PARKING (12X18) COVERED	119
PUBLIC PARKING (9X18)	109
PUBLIC PARKING (9X18) * DESIGNATED	13
PUBLIC PARKING (9X23) MEDIA	8
STAFF PARKING (9X18)	209
STAFF PARKING (9X18) * DESIGNATED	13
	524
VAN ACCESSIBLE STALL**	
EVIDENCE PARKING (9X18) VAN ACCESSIBLE	1
PATROL/STAFF (9X18) VAN ACCESSIBLE PARKING	1
PUBLIC PARKING (9X18) VAN ACCESSIBLE	1
PUBLIC PARKING (9X18) VAN ACCESSIBLE	1
SO/SR (9X18) ACCESSIBLE PARKING	1
	5
TOTALS	537

BICYCLE PARKING SCHEDULE

Description	QTY. UNITS	QTY. SPACES
HOOP RACK - SHORT TERM PARKING	8	16
STORAGE UNIT - LONG TERM PARKING - SINGLE	7	7
STORAGE UNIT LONG TERM PARKING - DOUBLE	4	8
TOTALS	19	31

CLEAN AIR / FUTURE EVCS SCHEDULE

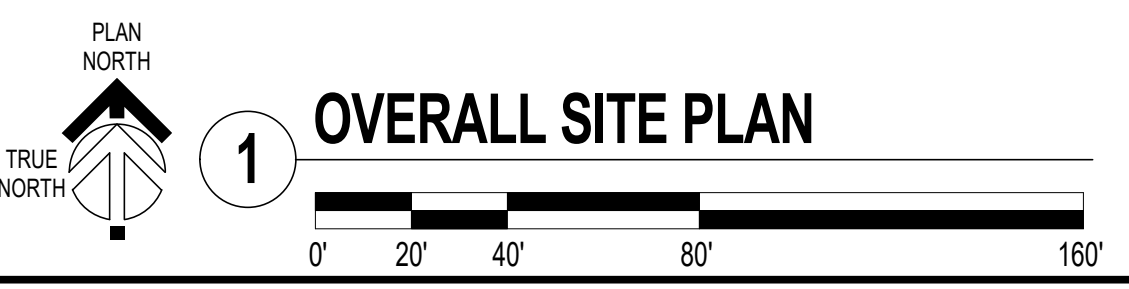
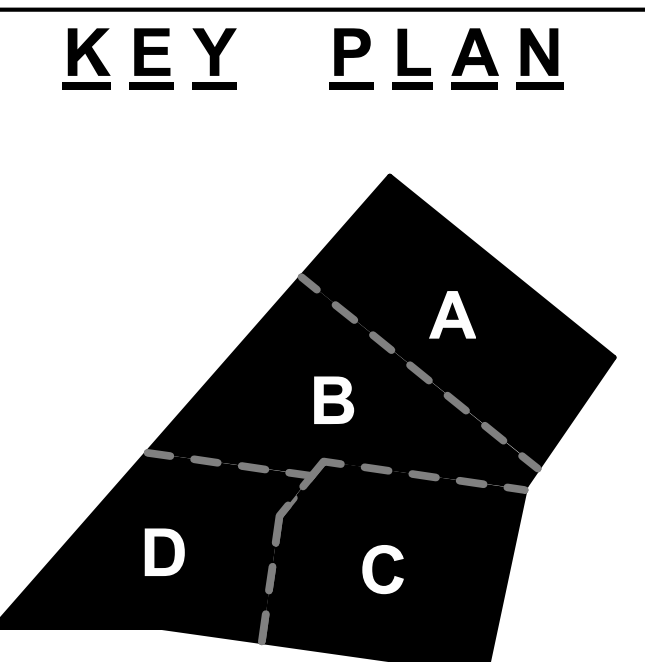
LOCATION/USE	QTY
* PUBLIC PARKING FUTURE EV	13
* PUBLIC PARKING FUTURE EV/ACCESSIBLE	1
* PUBLIC PARKING FUTURE EV/AMBULATORY	1
* PUBLIC PARKING FUTURE EV/VAN ACCESSIBLE	1
* STAFF PARKING FUTURE EV	13
* STAFF PARKING FUTURE EV/ACCESSIBLE	1
* STAFF PARKING FUTURE EV/AMBULATORY	1
Grand total:	31

* THESE ARE NOT ADDITIONAL STALL BUT DESIGNATED STALLS FROM PARKING SCHEDULE THAT ARE FUTURE EV CAPABLE

- ### GENERAL NOTES
- REFER TO CIVIL DRAWINGS FOR HARD SURFACE IMPROVEMENTS FOR PAVEMENT AND CONCRETE SURFACE TYPES.
 - REFER TO LANDSCAPE DRAWINGS FOR PLAN AND DRESSING AREAS.
 - ALL DIMENSIONS TO FACE OF CURB.
 - REFER TO ENLARGED PLANS FOR DETAILED DIMENSION ON PARKING LAYOUTS, GATE LOCATIONS, AND COURTYARD LAYOUTS.

SITE LINETYPE LEGEND

- PROPERTY LINE
- RIGHT OF WAY LINE
- - - SETBACK LINE
- . - EASEMENT LINE
- IMAGINARY PROPERTY LINE
- BUILDING FOOTPRINT LINE
- - - 33' AFTP BUILDING OFFSET LINE
- - - LIMITS OF PERMIT
- ✕ CHAINLINK FENCE



1 OVERALL SITE PLAN

C/S BROWARD builders

Arrington Watkins Architects

2024 Opportunity Drive, Suite 150
Roseville, California 95678
Telephone: (916) 338-7707
Fax: (888) 510-3055

REGISTRANT SEAL

Licensed Architect
State of California
C-36681
REN. 9/30/2019
4/17/2018
"DIGITALLY CERTIFIED"

EL DORADO COUNTY PUBLIC SAFETY FACILITY
SITE
200 INDUSTRIAL DRIVE
DIAMOND SPRINGS, CA 95619

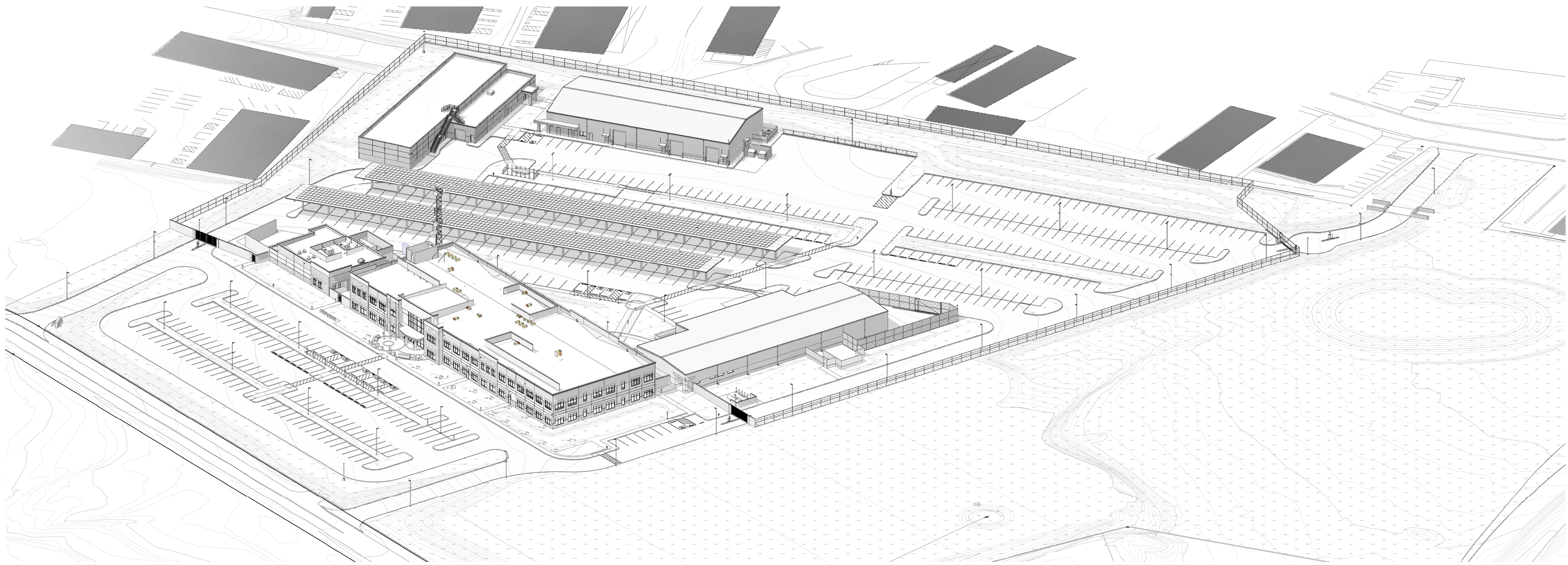


NO.	REVISION	DATE

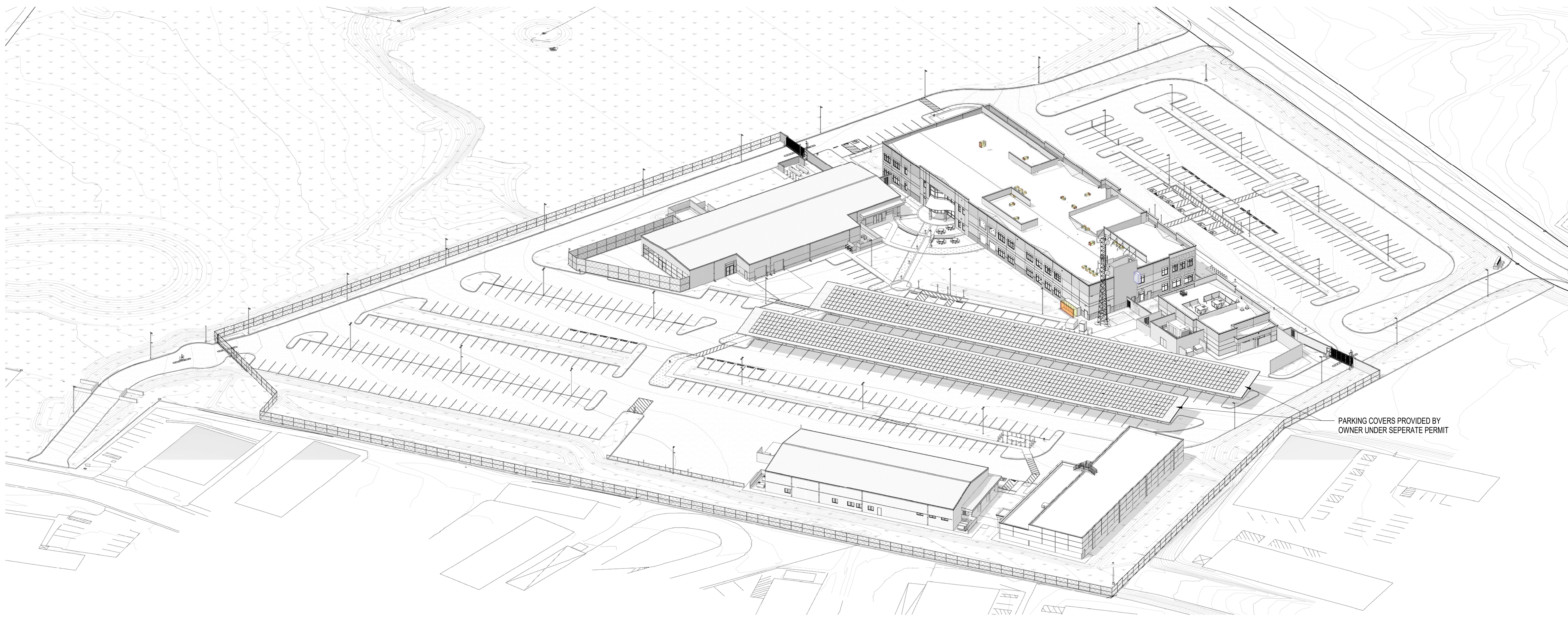
PROJECT NO.: 2017.033
DATE: 04-16-2018
DESIGNED BY:
DRAWN BY:
APPROVED BY:
SHEET TITLE:
SITE ARCHITECTURAL OVERALL SITE PLAN

SHEET NUMBER:
PS-A-1.1

4/16/2018 1:38:52 PM C:\Revit\17-058-058-Arch_Site_2017_MONIKA.rvt



1 LOOKING SOUTH EAST

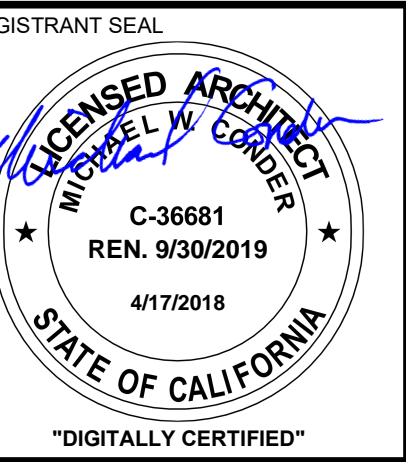


2 LOOKING NORTH WEST

PARKING COVERS PROVIDED BY OWNER UNDER SEPERATE PERMIT



2024 Opportunity Drive, Suite 150
Roseville, California 95678
Telephone: (916) 538-7107
Fax: (888) 510-3055



EL DORADO COUNTY PUBLIC SAFETY FACILITY
SITE
200 INDUSTRIAL DRIVE
DIAMOND SPRINGS, CA 95619



NO.	REVISION	DATE

PROJECT NO.: 2017.033
DATE: 04-16-2018
DESIGNED BY:
DRAWN BY:
APPROVED BY:
SHEET TITLE:
SITE ARCHITECTURAL 3D ISOMETRIC - SITE

SHEET NUMBER:
PS-A-1.2