

RECORD OF SURVEY

OF A PORTION OF THE HIGHWAY 88 SCENIC STRIP AS DESCRIBED
IN DEED TO THE UNITED STATES OF AMERICA, RECORDED IN BOOK
267 AT PAGE 4, AND BOOK 274 AT PAGE 258, OFFICIAL RECORDS
OF EL DORADO COUNTY, AND AS SHOWN ON THE BUREAU OF PUBLIC ROADS
RIGHT OF WAY MAP, STA. 0+00 TO STA. 690, DATED MAY, 1946,
LOCATED IN SECTION 35, T. 8 N. R. 13 E., SECTIONS 13, 14, 20, 21, 22, 23
24, 28, 29, 30, T. 8 N. R. 14 E., SECTIONS 16, 17, T. 8 N. R. 15 E., M.D.M.

COUNTY OF EL DORADO, CALIFORNIA
SCALE: 1" = 200' EMERSON L. SMITH L.S. 3062 SEPT., 1971

MERIDIAN BASED ON THE RECORD MERIDIAN AS COMPUTED FROM
THE SECTION CORNERS AND ROTATED FROM THE TRUE MERIDIAN
AS DETERMINED BY SOLAR OBSERVATION AS FOLLOWS:

PARCEL 5C: BASED ON SOLAR OBSERVATION.
PARCELS 1A, 2A, 1: LEFT 0°02'40" FROM THE TRUE MERIDIAN.
PARCELS 2, 3A: LEFT 0°04'50" FROM THE TRUE MERIDIAN.
PARCELS 3, 4A, 4, 5A, 1C, 2C, 6A, 3C: RIGHT 0°05'30" FROM THE TRUE MERIDIAN.
PARCELS 7A, 4C: LEFT 0°09'30" FROM THE TRUE MERIDIAN.

LEGEND:

- o 2" BRASS CAPPED PIPE SET UNLESS OTHERWISE NOTED.
- ⊘ 2" BRASS CAPPED PIPE SET AT CURVE B.C. OR E.C.
- COPPERWELD PIN SET (5/8")
- o-314 ... NUMBER STAMPED ON MONUMENT. ALL MONUMENTS STAMPED WITH MON. NUMBER AND SURVEYOR'S NO. (L.S. 3062).
- Sch..... INDICATES SPIRAL CHORD.

BOUNDARY POINTS ON SECTION LINES AND SECTION SUBDIVISION LINES ARE PUT AT THE RECORD LOCATION ACCORDING TO THE DEED AND NOT NECESSARILY ON THE SECTION OR SUBDIVISION LINE.

SURVEYOR'S CERTIFICATE

THIS MAP CORRECTLY REPRESENTS A SURVEY MADE BY ME OR UNDER MY DIRECTION IN CONFORMANCE WITH THE REQUIREMENTS OF THE LAND SURVEYOR'S ACT AT THE REQUEST OF UNITED STATES FOREST SERVICE.

Emerson L. Smith
EMERSON L. SMITH L.S. 3062

COUNTY SURVEYOR'S CERTIFICATE

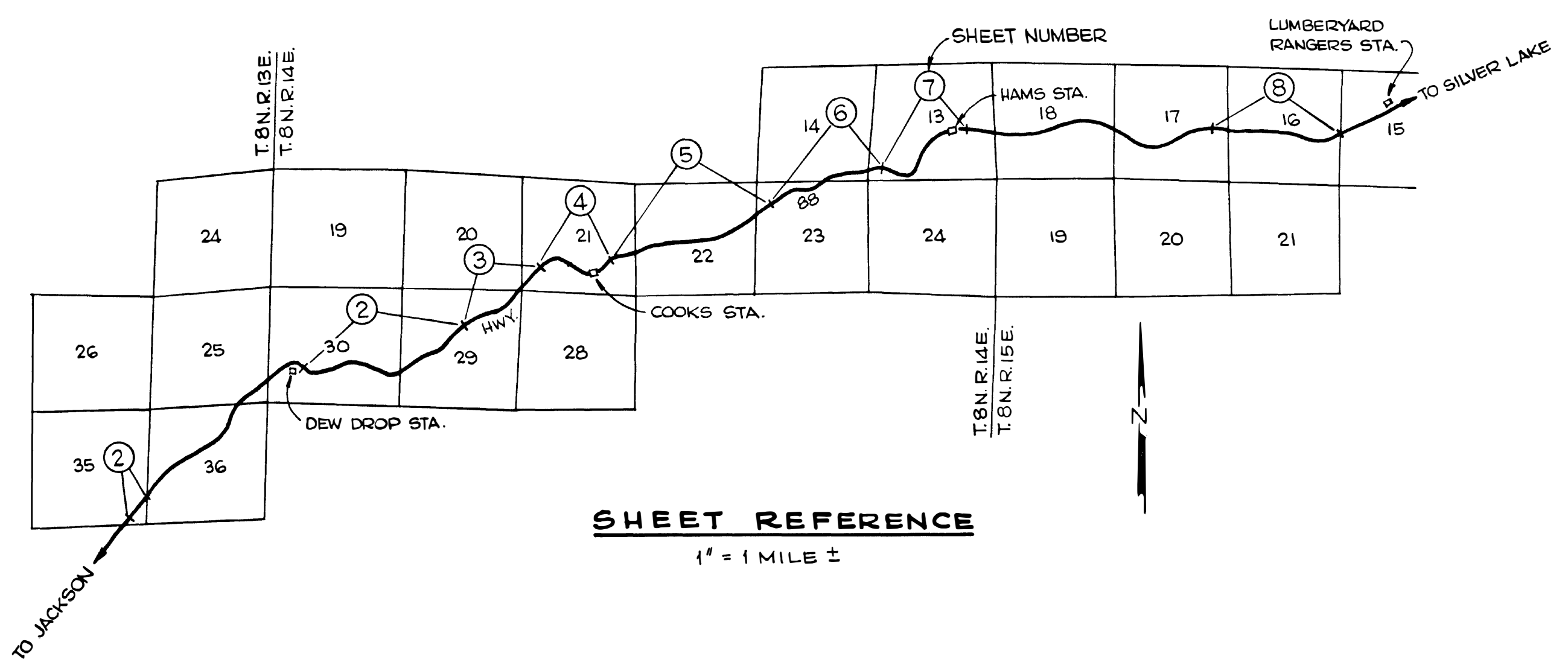
THIS MAP HAS BEEN EXAMINED FOR CONFORMANCE WITH THE REQUIREMENTS OF THE LAND SURVEYOR'S ACT THIS 26 DAY OF October, 1971.

Fred G. DeBerry
FRED G. DE BERRY L.S. 2403
COUNTY SURVEYOR
COUNTY OF EL DORADO

COUNTY RECORDER'S CERTIFICATE

FILED THIS 26 DAY OF Oct, 1971, AT 3:41 P.M. IN BOOK 3 OF RECORD OF SURVEYS AT PAGE 31, AT THE REQUEST OF EMERSON L. SMITH.

DOCUMENT NO.: 29436
James W. Sweeney
JAMES W. SWEENEY
COUNTY RECORDER
COUNTY OF EL DORADO
BY: _____
DEPUTY

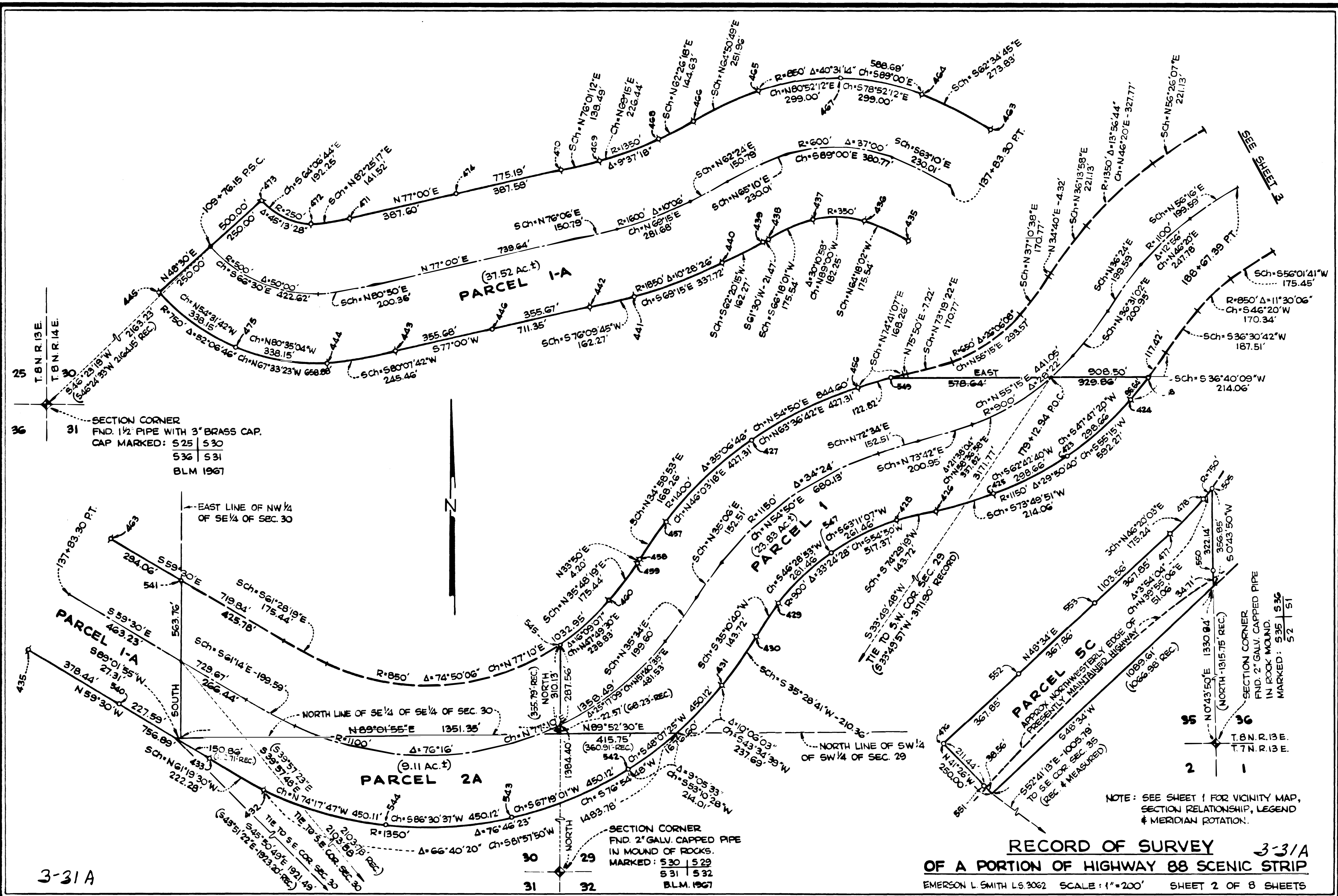


3-31

3-31
SHEET 1 OF 8 SHEETS

3-31

3/31



SECTION CORNER
 FND. 1 1/2" PIPE WITH 3" BRASS CAP.
 CAP MARKED: S 25 | S 30
 S 36 | S 31
 BLM 1967

SECTION CORNER
 FND. 2" GALV. CAPPED PIPE
 IN ROCK MOUND.
 MARKED: S 35 | S 36
 S 2 | S 1

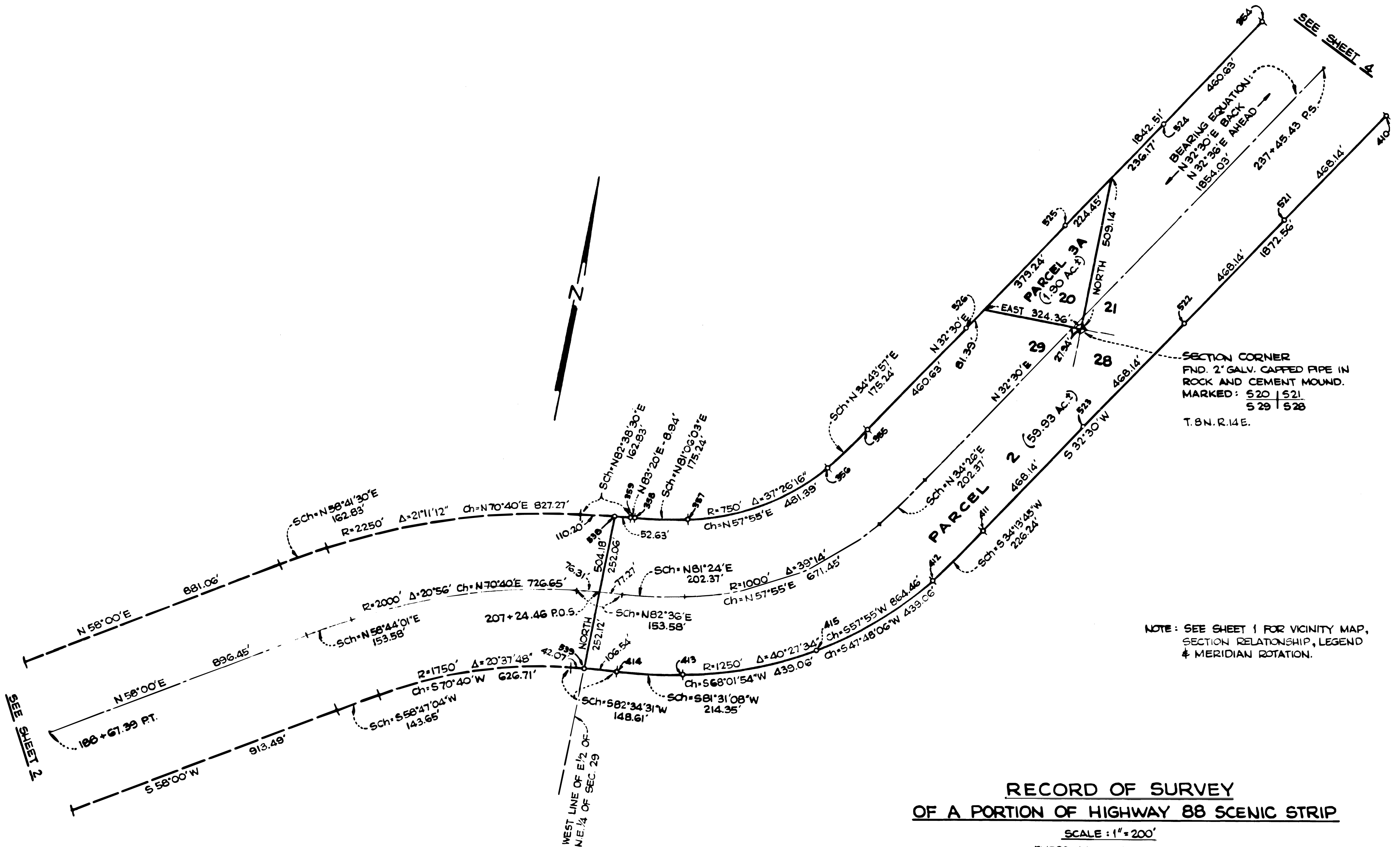
NOTE: SEE SHEET 1 FOR VICINITY MAP,
 SECTION RELATIONSHIP, LEGEND
 & MERIDIAN ROTATION.

RECORD OF SURVEY 3-31A
OF A PORTION OF HIGHWAY 88 SCENIC STRIP
 EMERSON L. SMITH LS 3062 SCALE: 1"=200' SHEET 2 OF 8 SHEETS

3-31A

3-31A

3/31A



SEE SHEET 2

SEE SHEET 4

BEARING EQUATION:
 N 32° 30' E BACK
 N 32° 36' E AHEAD

SECTION CORNER
 FND. 2" GALV. CAPED PIPE IN
 ROCK AND CEMENT MOUND.
 MARKED: 520 | 521
 529 | 528
 T.8N.R.14E.

NOTE: SEE SHEET 1 FOR VICINITY MAP,
 SECTION RELATIONSHIP, LEGEND
 & MERIDIAN ROTATION.

**RECORD OF SURVEY
 OF A PORTION OF HIGHWAY 88 SCENIC STRIP**

SCALE: 1" = 200'
 EMERSON L. SMITH L.S. 3062

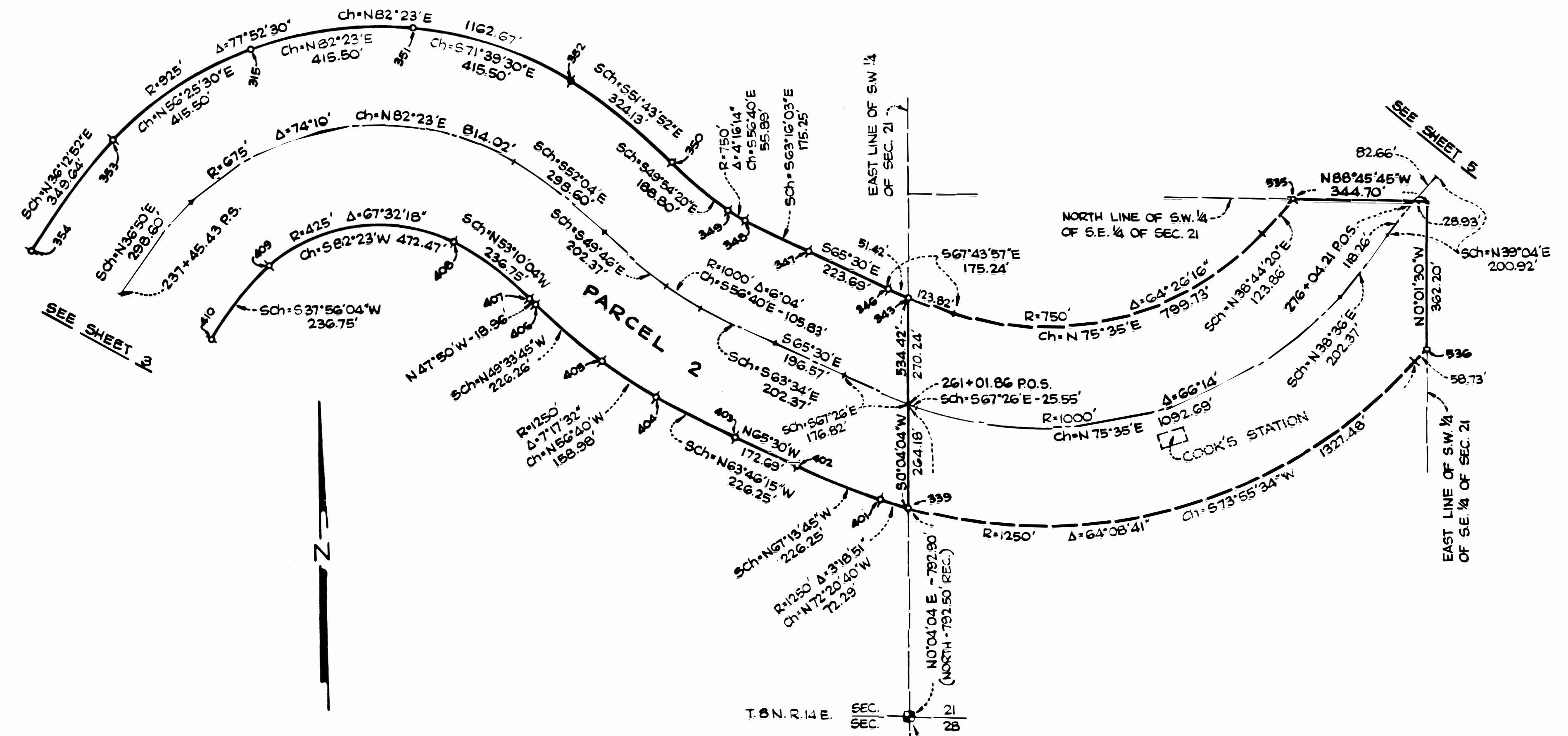
3-31B

3-31B
 SHEET 3 OF 8 SHEETS

RECORD OF SURVEY OF A PORTION OF HIGHWAY 88 SCENIC STRIP

SCALE: 1" = 200'
EMERSON L. SMITH LS 3062

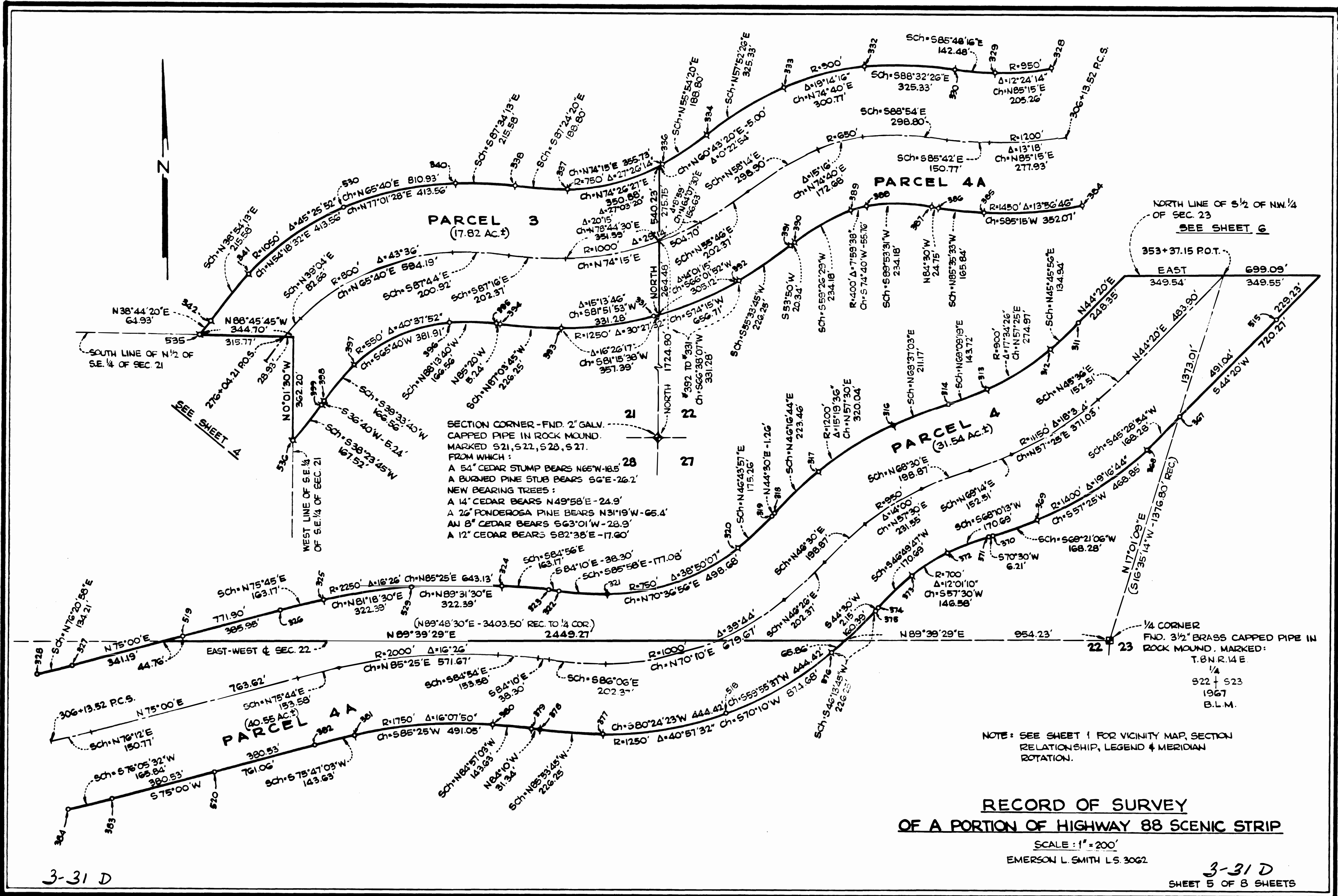
NOTE: SEE SHEET 1 FOR VICINITY MAP,
SECTION RELATIONSHIP, LEGEND
& MERIDIAN ROTATION.



1/4 CORNER
SET 2" BRASS CAPPED PIPE IN OLD
ROCK MOUND FROM WHICH;
A FALLEN 40" PINE BEARS N15°E - 26.4'
FND. SCRIBE MARKS ON PIECES TAKEN
FROM FALLEN PINE.
NEW BEARING TREES:
A 25' CEDAR BEARS N17°18'E - 54.5'
A 24' CEDAR BEARS S57°22'W - 35.6'

3-31C

3-31C
SHEET 4 OF 8 SHEETS



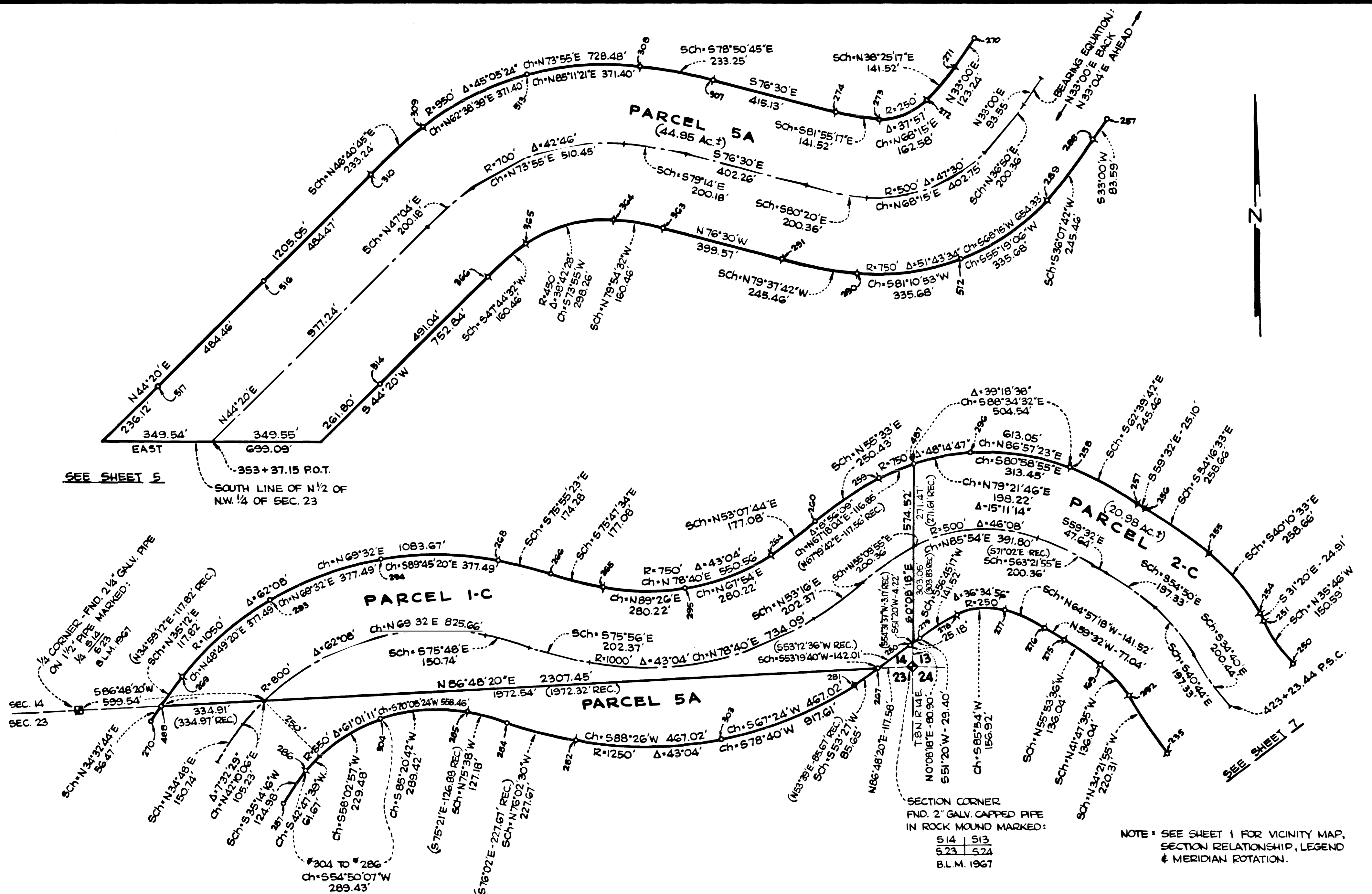
SECTION CORNER - FND. 2" GALV. CAPPED PIPE IN ROCK MOUND. MARKED S21, S22, S23, S27. FROM WHICH:

- A 54" CEDAR STUMP BEARS N65°W-18.5'
- A BURNED PINE STUB BEARS S6°E-26.2'
- NEW BEARING TREES:
- A 14" CEDAR BEARS N49°58'E-24.9'
- A 26" PONDEROSA PINE BEARS N31°19'W-65.4'
- AN 8" CEDAR BEARS S63°01'W-28.9'
- A 12" CEDAR BEARS S82°38'E-17.60'

**RECORD OF SURVEY
OF A PORTION OF HIGHWAY 88 SCENIC STRIP**

SCALE: 1" = 200'
EMERSON L. SMITH L.S. 3062

3-31 D
SHEET 5 OF 8 SHEETS



SEE SHEET 5

-353+37.15 P.O.T.
SOUTH LINE OF N 1/2 OF
NW 1/4 OF SEC. 23

1/4 CORNER - FND 2 1/2" GALV. PIPE
ON 1/2" PIPE MARKED:
S 1/2 1/2
B.L.M. 1967

SEC. 14
SEC. 23

SECTION CORNER
FND. 2" GALV. CAPPED PIPE
IN ROCK MOUND MARKED:
S14 S13
S23 S24
B.L.M. 1967

NOTE: SEE SHEET 1 FOR VICINITY MAP,
SECTION RELATIONSHIP, LEGEND
& MERIDIAN ROTATION.

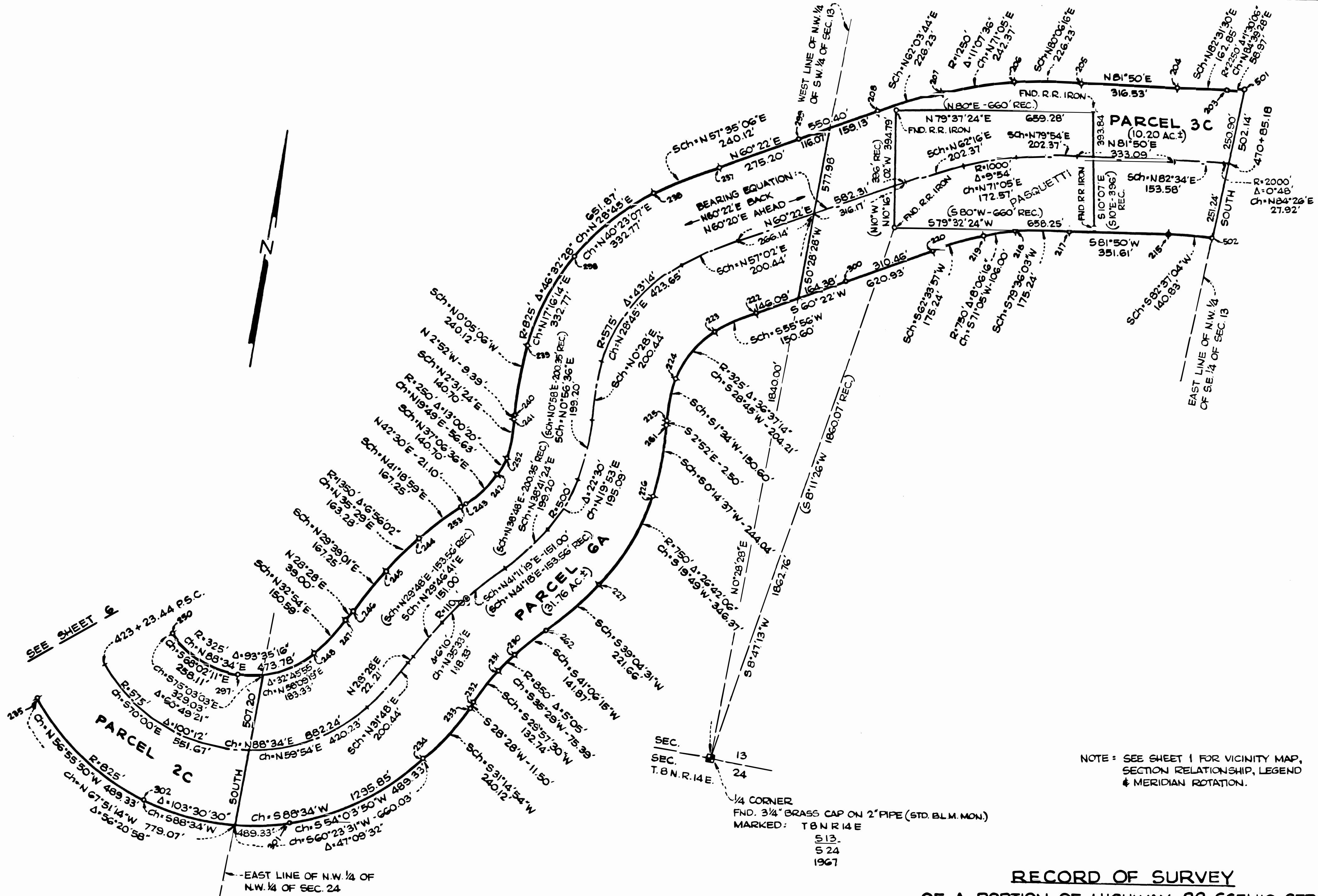
**RECORD OF SURVEY
OF A PORTION OF HIGHWAY 88 SCENIC STRIP**

SCALE: 1"=200'

EMERSON L. SMITH L.S. 3062

3-31E

3-31E
SHEET 6 OF 8 SHEETS



NOTE: SEE SHEET 1 FOR VICINITY MAP,
SECTION RELATIONSHIP, LEGEND
& MERIDIAN ROTATION.

SEC. 13
SEC. 24
T.B.N.R.14E.
1/4 CORNER
FND. 3/4" BRASS CAP ON 2" PIPE (STD. B.L.M. MON.)
MARKED: T.B.N.R.14E
S13
S24
1967

RECORD OF SURVEY OF A PORTION OF HIGHWAY 88 SCENIC STRIP

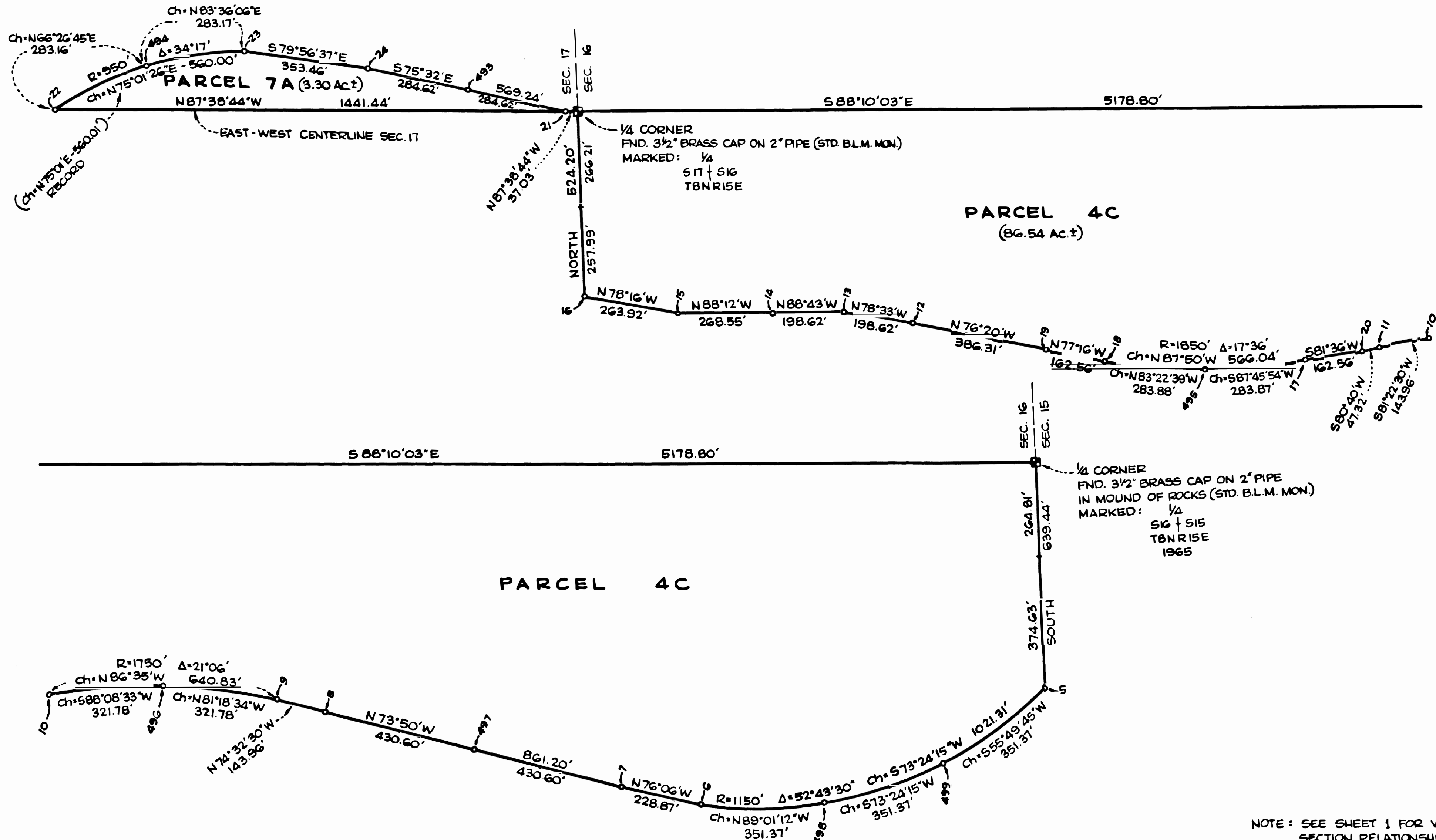
SCALE: 1"=200'
EMERSON L. SMITH L.S. 3002

3-31 F
SHEET 7 OF 8 SHEETS

3-31 F

3-31 F

3/31 F



NOTE: SEE SHEET 1 FOR VICINITY MAP,
SECTION RELATIONSHIP, LEGEND
& MERIDIAN ROTATION.

RECORD OF SURVEY
OF A PORTION OF HIGHWAY 88 SCENIC STRIP
 SCALE: 1"=200'
 EMERSON L. SMITH L.S. 3062

3-316

3-31 G
 SHEET 8 OF 8 SHEETS