

The background of the slide features a large, circular seal of the El Dorado Irrigation District. The seal is rendered in a faded, light blue and yellow color scheme. It contains the text "EL DORADO" at the top and "IRRIGATION DISTRICT" at the bottom. The central part of the seal depicts a landscape with a river, fields, and a sun.

**El Dorado Irrigation (EID)
Wastewater Collection
Administrative Facilities
Relocation
Conditional Use Permit
Application No.CUP19-0005**

**Planning Commission
December 12, 2019**

Project Description

- Conditional Use Permit:

Expansion and operation of EID's El Dorado Hills Wastewater Treatment Plant (EDHWWTP) administrative facilities to accommodate the relocation of EID's Bass Lake wastewater collection administrative facilities to the existing EDHWWTP site

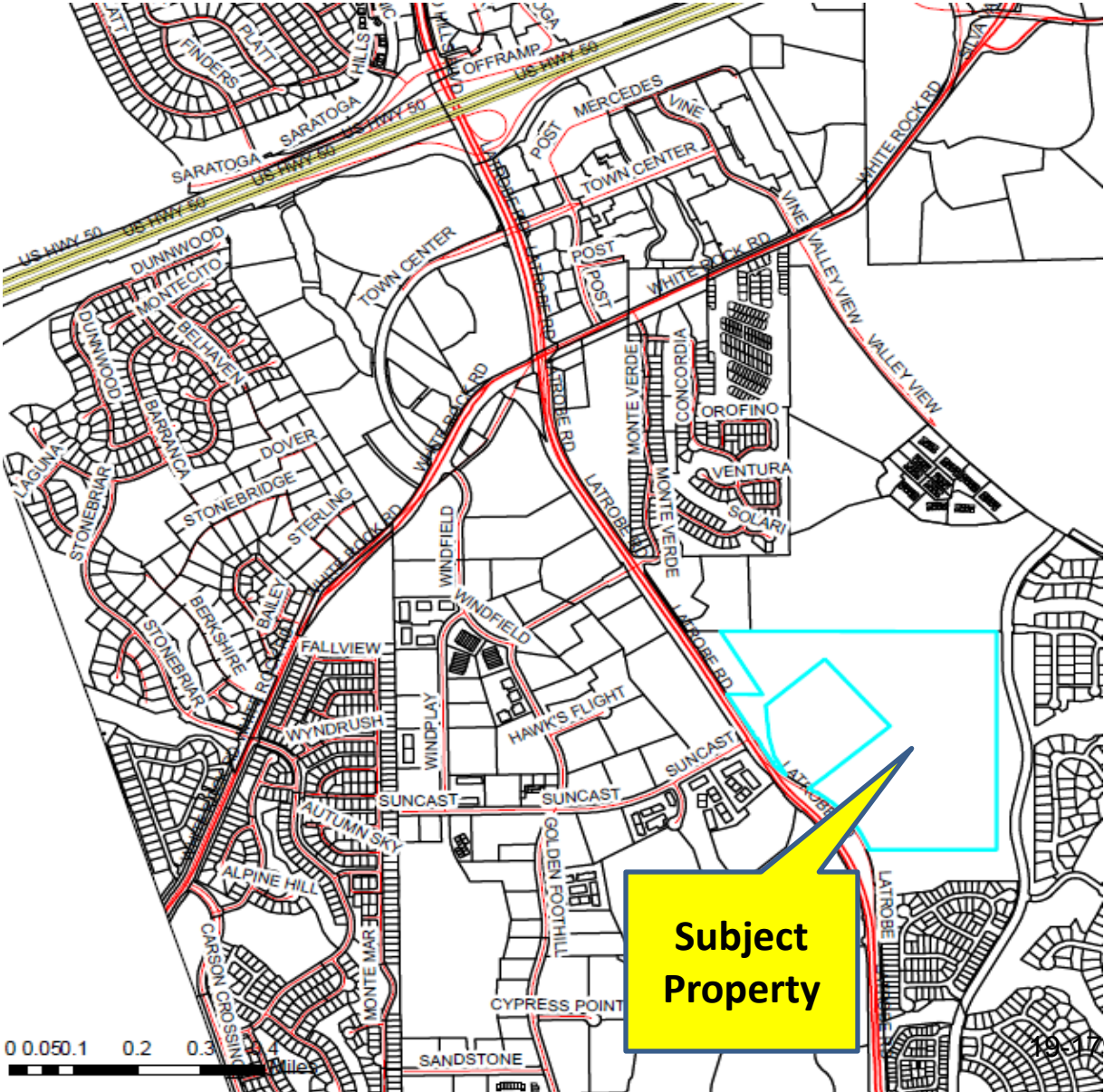
Project Description (cont'd)- Existing EID Facility near Bass Lake

Existing Facility Location:

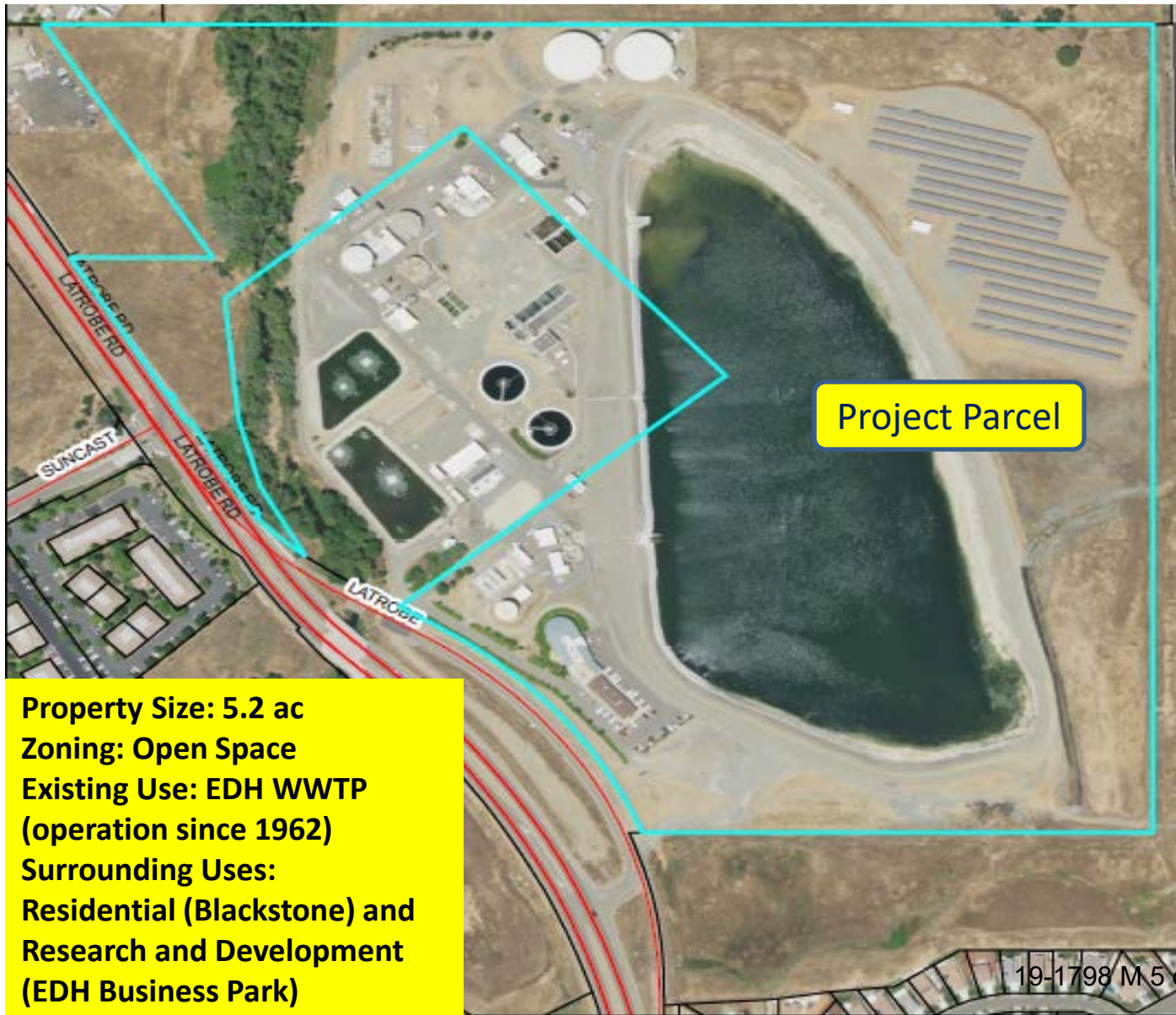
- 3,800 sf administrative buildings
- Corporation yard
- Storage area with metal shipping containers
- 20 EID employees
- Site to be used for future regional park near Bass Lake



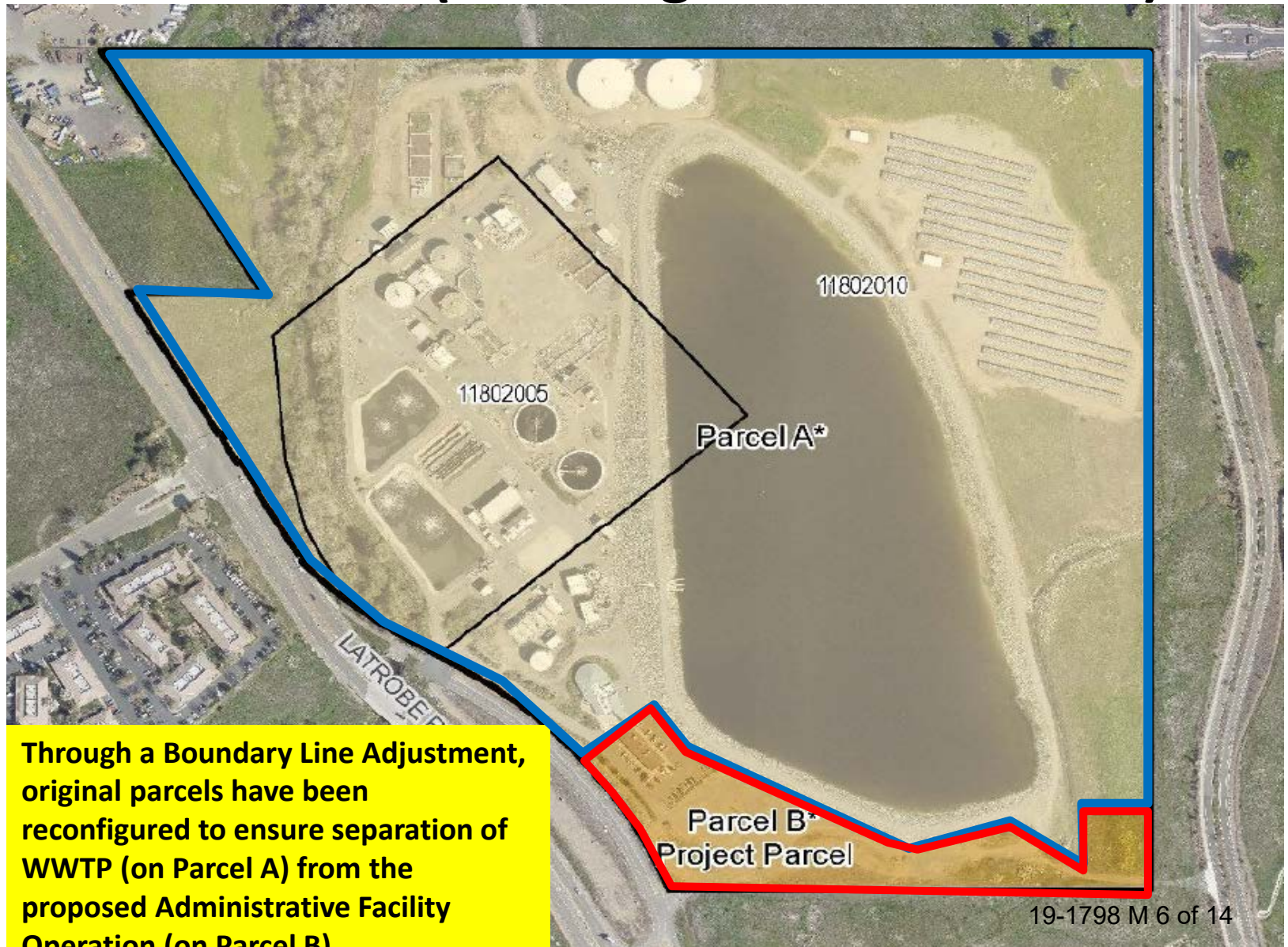
Project Description (cont'd)- Relocation Site at EDH WWTP



Project Description (cont'd)- Relocation Site at EDH WWTP (Original Configuration EID Parcels)

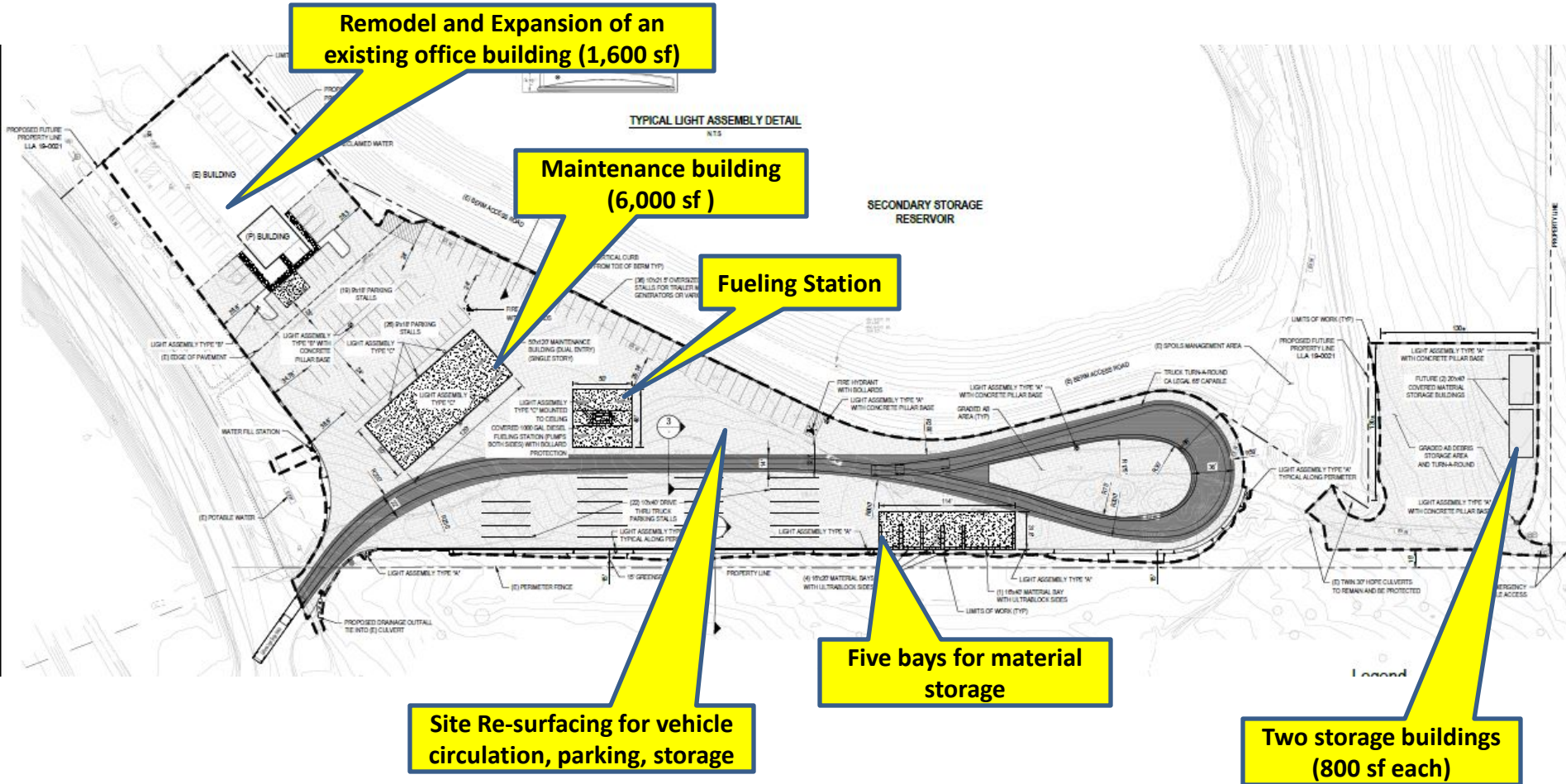


Project Description (cont'd)- Relocation Site at EDH WWTP (Reconfigured EID Parcels)

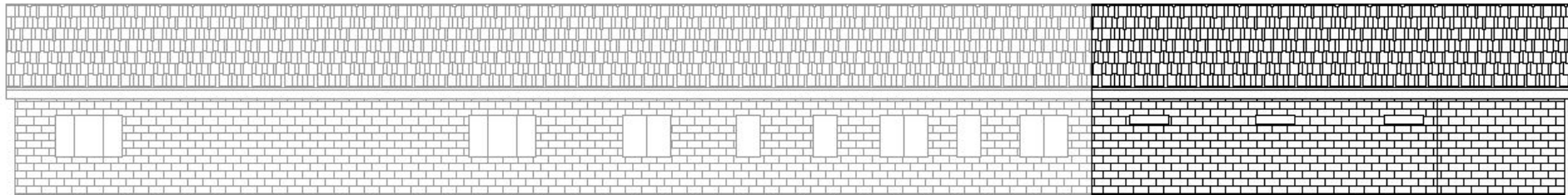


Through a Boundary Line Adjustment, original parcels have been reconfigured to ensure separation of WWTP (on Parcel A) from the proposed Administrative Facility Operation (on Parcel B).

Project Description (cont'd)- Site Plan (Proposed Site Improvement and Construction)



Project Description (cont'd)- Elevation Exhibit (Expansion and Remodel 1,600 sf Existing Office Building)



SIDE VIEW - (E) BUILDING WITH PROPOSED BUILDING ADDITION

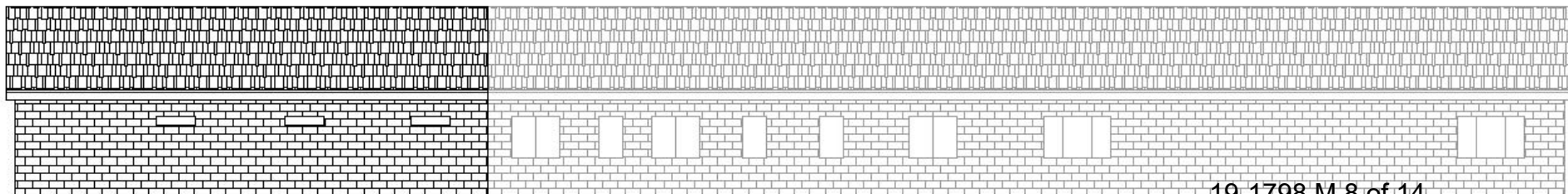
FOR BUILDING ADDITION, ALL EXTERIOR MATERIALS,
FINISHES, AND COLORS TO MATCH EXISTING.



FRONT VIEW - (E) BUILDING



FRONT VIEW - NEW BUILDING

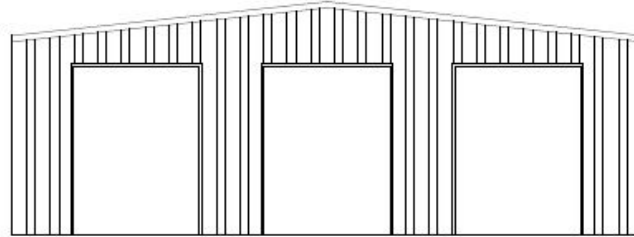


SIDE VIEW - (E) BUILDING WITH PROPOSED BUILDING ADDITION

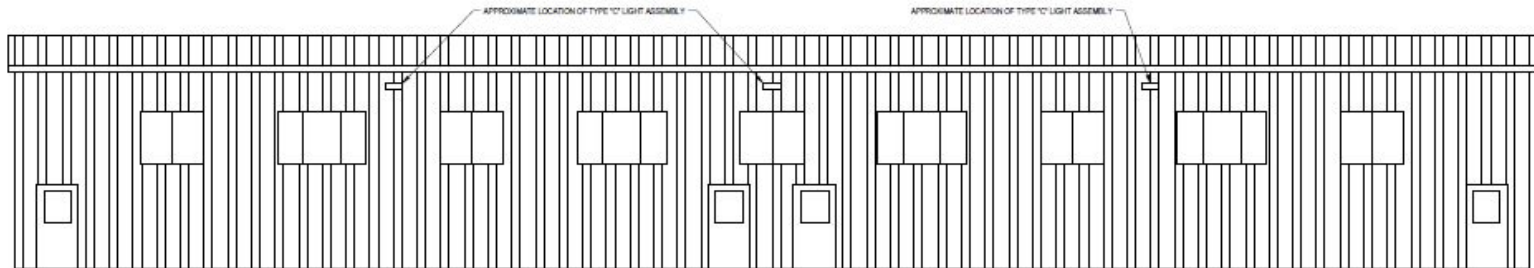
Project Description (cont'd)- Elevation Exhibit

Construction of a new 6,000 sq. ft. maintenance and operation building

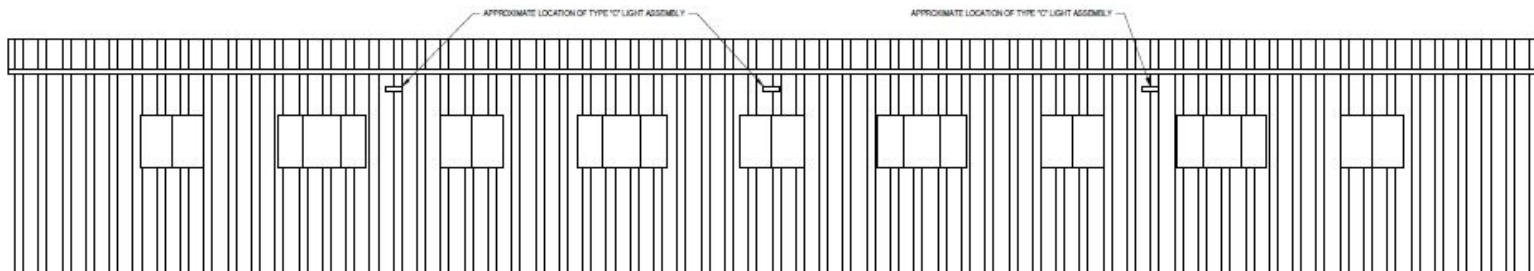
BRONX, AND SOME WHITE.



FRONT / BACK VIEW

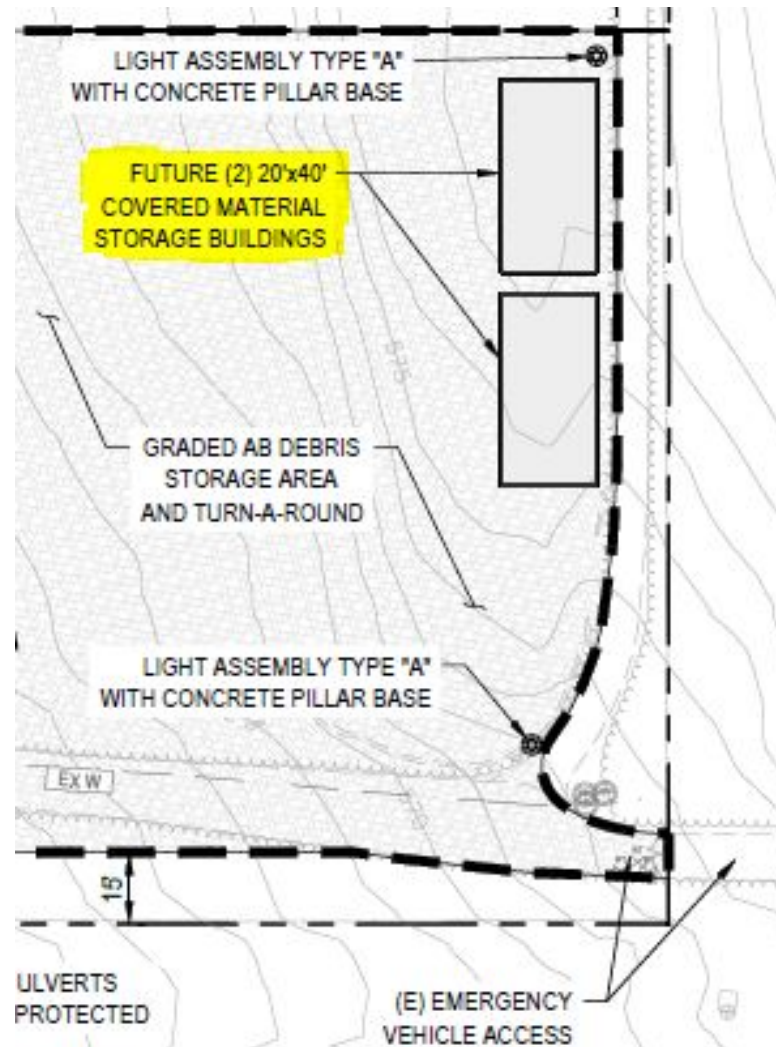


SIDE VIEW

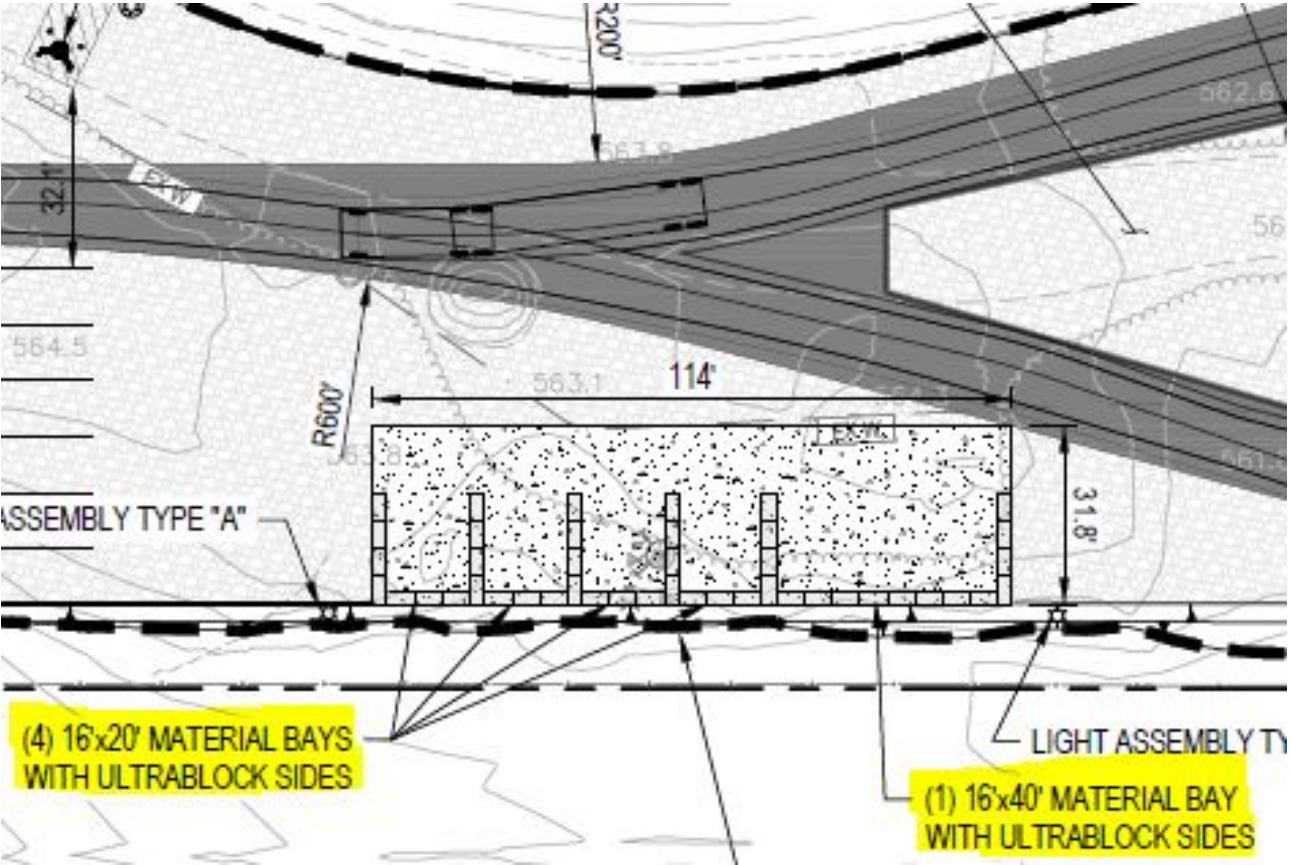


SIDE VIEW

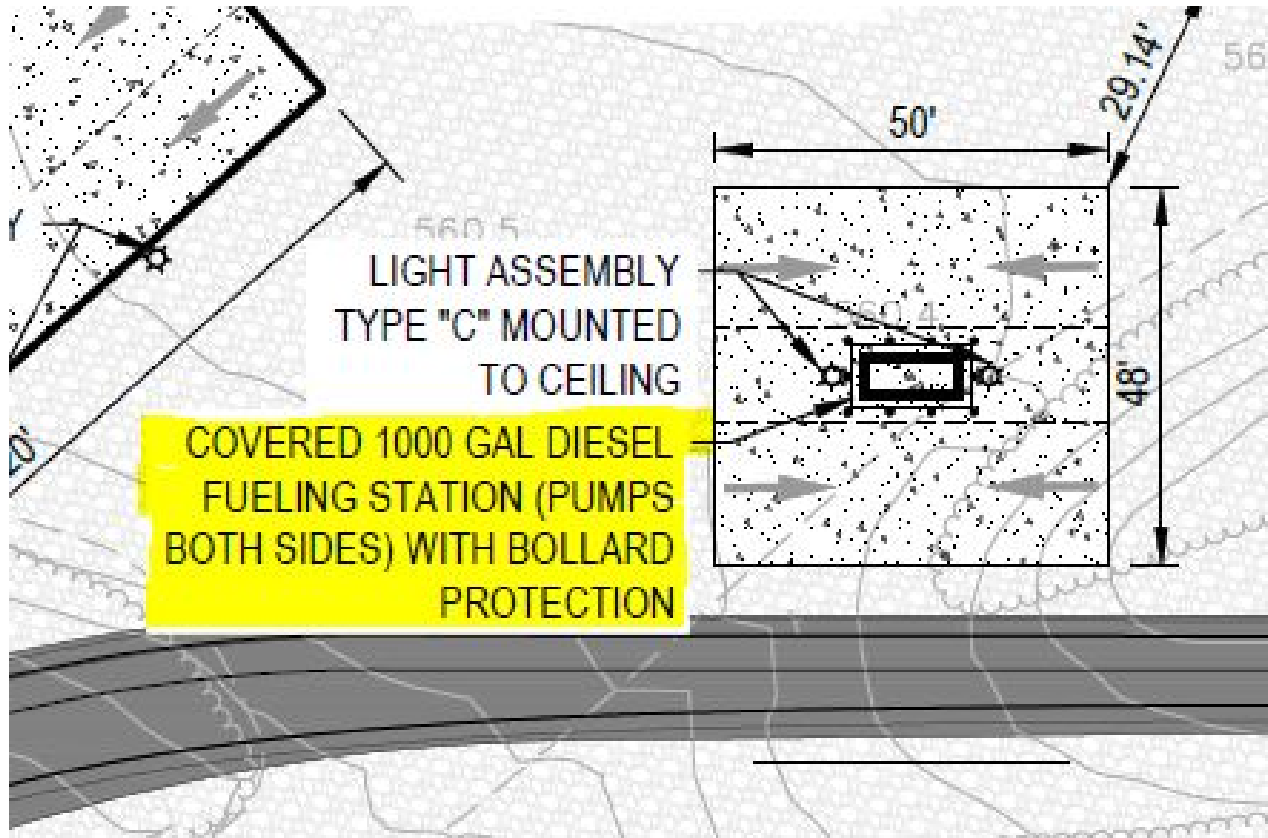
Project Description (cont'd)- Site Plan Construction of two 800 sq. ft. equipment and storage buildings



Construction of one 1,824 sq. ft. block wall containing five material storage bays



Project Description (cont'd)- Site Plan Installation of a 1,000 gallon fueling station



Analysis

- Consistent with applicable policies of the General Plan and development standards of the Zoning Ordinance
- An Initial Study of the project's potential environmental effects was prepared
 - Resulting in a Mitigated Negative Declaration
 - Mitigation Measures identified and recommended to minimize the impacts associated with Traffic, Biological and Cultural Resource
- Recommended Conditions of Approval (based on agency input) to ensure orderly implementation of the project

Recommendation

- Planning Commission take the following actions:
 - Adopt the Mitigated Negative Declaration based on the Initial Study;
 - Adopt the Mitigation Monitoring Reporting Program (MMRP) incorporated as project Conditions of Approval; and
 - Approve Conditional Use Permit CUP19-0005 based on the Findings and subject to the Conditions of Approval.