

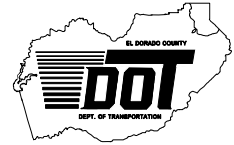


CONSTRUCTION UNIT
 2441 Headington Road
 Placerville CA 95667
 Phone: (530) 642-4987
 Fax: (530) 295-2655

JAMES W. WARE, P.E.
 Director of Transportation

 Internet Web Site:
<http://edcgov.us/dot>

MAIN OFFICE
 2850 Fairlane Court
 Placerville CA 95667
 Phone: (530) 621-5900
 Fax: (530) 626-0387



DATE: January 25, 2011

TO: All Prospective Bidders

SUBJECT: Addendum No. 2
Access Control/CCTV/Intrusion Alarm System for the Human Services/Child Support Services/Health Services Departments Placerville and South Lake Tahoe (Contract No. PW 10-30566, CIP No. 90400)

Submit proposals for this work with the understanding and full consideration of this addendum. The revisions declared in this addendum are essential parts of the Contract.

ITEM NO.	LOCATION, PAGE OR DRAWING NO.	DESCRIPTION OF CHANGE
2.01	N-1	Notice to Bidders – LOCATION/DESCRIPTION OF WORK – ITEM D Replace “220,000” with “\$290,000”.
2.02	N-2	Notice to Bidders – BRAND-SPECIFIC PRODUCTS Add the following sentences to this section: <i>“When the contract documents require a brand-specific item, Contractor must provide a bid for the brand and model indicated. The County will not accept substitutions.”</i>
2.03	Plan Sheets 2, 4, 5, 7, 9, 11, 12, 14, 17, 18, and 20	As a result of questions raised at the pre-bid meetings and subsequent meeting with the Human Services and Health Services Departments the following Plan Sheets have been revised: A 0.1 (2 of 20), A 1.1 (4 of 20), A 1.2 (5 of 20), A 2.1(7 of 20), A 3.1(9 of 20), A 4.1(11 of 20), A 4.2 (12 of 20), A 5.1 (14 of 20), A 5.4(17 of 20), A 5.5 (18 of 20), and A 6.1 (20 of 20) Each revision is noted with a cloud and numbered triangle and listed in the revision block in the upper right corner of the plan sheet. Bidders are instructed to replace the original plan sheets 2, 4, 5, 7, 9, 11, 12, 14, 17, 18, and 20 of 20

		with plan sheets 2, 4, 5, 7, 9, 11, 12, 14, 17, 18, and 20 of 20 with 1/24/11 revision date attached to this addendum. Attach the applicable revised plan sheet to the corresponding original plan sheet in the contract document booklet.
2.04	P-3 through P-5 and C-10 through C-12	As a result of questions raised at the pre-bid meetings and subsequent meeting with the Human Services and Health Services Departments the Proposal Pay Items and Bid Price Schedule pages P-3 through P-5 and Exhibit A, Contractor's Bid and Bid Schedule pages C-10 through C-12 have been revised.
2.05	Appendix B	Bidders are instructed to replace Appendix B pages BB-1 through BB-4 with the revised pages BB-1R through BB-4R attached to this addendum. Attach the applicable revised page to the corresponding original page in Appendix B in the contract document booklet.
2.05	TS-11	Question: For lever sets that have push-button locks, are we to replace the lock or pin it in the locked position? Answer: Pin push-button lock in "lock" position. Add the following to the Measurement and Payment Clause 3.2.2: <i>"The Unit Price bid for Door Package shall include pinning existing push-button locks in the "locked" position if the lever set is otherwise suitable for electronic locking."</i>
2.06	TS-11, TS-3, and Plan Sheet A 5.1	Question: 1) For 670 Placerville Drive location should we include replacing the door closures to the main lobby? 2) Please clarify whether the wiring for the lobby doors must be run in a wire mold or wire tape. Answer: 1) Add the following to the Measurement and Payment Clause 3.2.2: <i>"The Unit Price bid for Door Package shall include repairing or replacing the existing automatic door closures for the lobby doors shown on Plan Sheet A 5.1."</i> 2) Please add the following to Section 1.3 "Cabling": <i>"The wiring for the Lobby doors at 670 Placerville Drive shown on Plan Sheet A 5.1 shall be run in a wire mold."</i>
2.07	TS-10 and TS-11	Question: 1) What material shall be used to replace locks? 2) How should we address exposed hinges? Answer: 1) Add the following to Section 3.2.1

		<p>“Requirements”: <i>“New door locks shall be made of the same material as the existing door locks at the facility.”</i></p> <p>2) Add the following to the Measurement and Payment Clause 3.2.2: <i>“The Unit Price bid for Door Package shall include pinning all exposed door hinges.”</i></p>
2.08	TS-11	<p>Section 3.2.2 Measurement and Payment”: Add the following after “and miscellaneous work necessary”: <i>“including replacing inoperable hardware and re-hanging the exit door in the Dining Room shown on Plan Sheet A 4.1,”</i></p>
2.09	TS-11	<p>Section 3.2.2 Measurement and Payment”: Add the following to this section: <i>“The Unit Price bid for Door Package shall include blanking off the dead bolt and installing a latch-guard plate at the data closet door at 937 Spring Street.”</i></p>
2.10	TS-3	<p>Question: Where will raceways for door wiring for 937 Spring Street be placed? Answer: Add the following to Section 1.3 “Cabling”: <i>“All raceways for 937 Spring Street for door wiring shall be surface mounted on ceilings or walls as space allows.”</i></p>
2.11	TS-10	<p>Section 3.1.1 Access Controller – Revise the first bulleted item to read as follows: <i>“3057 Briw Road, Human Services Department 18”</i></p>
2.12	TS-12	<p>Section 4.1.1 Requirements –</p> <ol style="list-style-type: none"> 1. Delete the third bulleted item – <i>“3057 Briw Road, Human Services Department 4”</i> 2. Revise the fourth, sixth, and seventh bulleted items to read as follows: <ol style="list-style-type: none"> a. <i>“3057 Briw Road, Human Services Department 18”</i> b. <i>“670 Placerville Drive, Health Services Department 44”</i> c. <i>“1900 Lake Tahoe Blvd., Health Services Department 25”</i> 3. Add the following as the last bulleted item under the number of new panic buttons at each location that were considered in determining the number of Intrusion Detection Controllers needed: <i>“3047 Briw Road, Human Services</i>

		<i>Department, 2</i>
2.13	TS-15 and TS-16	<p>Section 4.5.1 “Requirements”:</p> <ol style="list-style-type: none"> 1. Replace “blue flashing lights” with “call lights”. 2. Add the following as the second to last sentence of the first paragraph of Section 4.5.1: <i>“The Panic Button systems shall be upgradeable to allow notification of emergency responders of an incident in the facility.”</i> 3. Add the following to the first bulleted item on TS-16: <i>“Install at 3047 Briw Road and 3057 Briw Road (Human Services and Child Support Services). Buttons shall be able to activate local and emergency responder alarms.”</i> 4. Add the following to the second bulleted item on TS-16: <i>“Install at 670 Placerville Drive and 1900 Lake Tahoe Blvd. Buttons shall be able to activate local alarm only.”</i>
2.14	TS-17	<p>Section 5.2.1 “Requirements” In the third paragraph, delete “under-eave”.</p>
2.15	TS-19	<p>Section 6.1 “General”: Add “panic button devices” after “audio listening security devices” in the paragraph beginning with “Contractor shall provide and operate...”</p>

Pages P-3R, P-4R, P-5R of the Proposal Pay Items and Bid Price Schedule shall be attached to the respective pages in the original Proposal Pay Items and Bid Price Schedule in the Contract Documents booklet. Pages C-10R, C-11R, and C-12R of Exhibit A, Contractor’s Bid and Bid Schedule shall be attached to the respective pages in the original Exhibit A, Contractor’s Bid and Bid Price Schedule, in the Contract Documents booklet. The revised pages of Appendix B shall be attached to the original pages of Appendix B as described above. The revised Plans Sheets shall be attached to the original Plan Sheets in the contract document booklet as described above. The remaining pages of this addendum shall be attached to the Contract Documents booklet.

Indicate receipt of this addendum by filling in the number of this addendum in the space provided on the signature page of the proposal.

Holders who have already mailed their proposal can contact Janel Gifford at (email: Janel.Gifford@edcgov.us) to arrange return of their proposal.

Inform all suppliers and subcontractors as necessary.

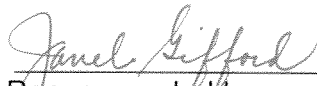
The DOT is only sending this addendum by posting on the following website:
<http://www.edcgov.us/Government/DOT/Bids.aspx>.

If you are not a Contract Documents Holder, but request a set of documents to bid on this project, you must comply with the requirements of this addendum when submitting your bid.

Attachments:


Revised Plan Sheet A 0.1 pg 2 of 20
Revised Plan Sheet A 1.1 pg 4 of 20
Revised Plan Sheet A 1.2 pg 5 of 20
Revised Plan Sheet A 2.1 pg 7 of 20
Revised Plan Sheet A 3.1 pg 9 of 20
Revised Plan Sheet A 4.1 pg 11 of 20
Revised Plan Sheet A 4.2 pg 12 of 20
Revised Plan Sheet A 5.1 pg 14 of 20
Revised Plan Sheet A 5.4 pg 17 of 20
Revised Plan Sheet A 5.5 pg 18 of 20
Revised Plan Sheet A 6.1 pg 20 of 20
Revised Proposal Pay Items and Bid Price Schedule P-3R, P-4R, and P-5R
Revised Exhibit A, Contractor's Bid and Bid Schedule C-10R, C-11R, and C-12R
Revised Appendix B Sample Application for Payment BB-1R, BB-2R, BB-3R and BB-4R

End of Addendum No. 2



Recommended by:
Janel Gifford, P.E.
Office Engineer

1/26/11
Date



Approved by:
James W. Ware, P.E.
Director of Transportation

1/26/11
Date

EL DORADO COUNTY ACCESS CONTROL / CCTV / INTRUSION ALARM SYSTEM for the HUMAN SERVICES/ CHILD SUPPORT SERVICES / HEALTH SERVICES DEPARTMENTS PLACERVILLE AND SOUTH LAKE TAHOE- CONTRACT NO. 90400

PROJECT NOTES

- LIST OF 2007 CALIFORNIA CODE OF REGULATIONS (CCR) APPLICABLE CODE AS OF JANUARY 1, 2008:

 2007 CALIFORNIA BUILDING STANDARDS ADMINISTRATIVE CODE, CCR, TITLE 24, PART 1
 2007 CALIFORNIA BUILDING CODE (CBC), CCR, TITLE 24, PART 2, VOLUMES 1 AND 2 (WITH 1997 UNIFORM BUILDING CODE OF THE INTERNATIONAL CONFERENCE OF BUILDING OFFICIALS)
 2007 CALIFORNIA ELECTRICAL CODE, CCR, TITLE 24, PART 3
 (WITH 1999 NATIONAL ELECTRICAL CODE OF NATIONAL FIRE PROTECTION ASSOCIATION (NFPA))
 2007 CALIFORNIA MECHANICAL CODE (CMC), CCR, TITLE 24, PART 4 (WITH 2000 UNIFORM MECHANICAL CODE OF INTERNATIONAL CONFERENCE OF BUILDING OFFICIALS)
 2007 CALIFORNIA PLUMBING CODE, CCR, TITLE 24, PART 5 (WITH 2000 UNIFORM PLUMBING CODE OF INTERNATIONAL ASSOCIATION OF PLUMBING AND MECHANICAL OFFICIALS)
 2007 CALIFORNIA ENERGY CODE, CCR, TITLE 24, PART 6
 2007 CALIFORNIA ELEVATOR SAFETY CONSTRUCTION CODE, CCR, TITLE 24, PART 7
 2007 CALIFORNIA HISTORICAL BUILDING CODE, CCR, TITLE 24, PART 8
 2007 CALIFORNIA FIRE CODE, CCR, TITLE 24, PART 9 (WITH 1997 UNIFORM FIRE CODE OF INTERNATIONAL CONFERENCE OF BUILDING OFFICIALS AND THE WESTERN FIRE CHIEFS ASSOCIATION)
 2007 CALIFORNIA CODE FOR BUILDING CONSERVATION, CCR, TITLE 24, PART 10, (WITH 1997 UNIFORM CODE FOR BUILDING CONSERVATION OF THE INTERNATIONAL CONFERENCE OF BUILDING OFFICIALS)
 2007 CALIFORNIA REFERENCED STANDARDS CODE, CCR, TITLE 24, PART 12
 PARTIAL LIST OF APPLICABLE NFPA STANDARDS:
 2007 CBC, CCR, TITLE 24, PART 2, VOL. 1, SECTION 3504.1.3 (FOR SFM) NATIONAL STANDARDS NFPA 72 - (CALIFORNIA AMENDED) NATIONAL FIRE ALARM CODES, 1996 EDITION.
- CHANGES TO THE APPROVED DRAWINGS AND SPECIFICATIONS SHALL BE MADE BY AN ADDENDA OR A CHANGE ORDER.
- TESTS AND TESTING LABORATORY PER SECT. 4-335. (OWNER SHALL PAY THE TESTING LABORATORY.)

ABBREVIATIONS

SYMBOLS

A.B.	AGGREGATE BASE	(F)	FUTURE	MIN	MINIMUM	S.S.	STAINLESS STEEL
A.C.	ASPHALT CONCRETE	F.D.	FLOOR DRAIN	MISC	MISCELLANEOUS	STD	STANDARD
A/C	AIR CONDITIONING	F.E.	FIRE EXTINGUISHER	M.O.	MASONRY OPENING	STL	STEEL
ACC	ACCESSIBLE	F.E.C.	FIRE EXTINGUISHER CABINET	M.R.	MOISTURE RESISTANT	STOR	STORAGE
A.D.	AREA DRAIN	F.F.E.	FINISH FLOOR ELEVATION	(N)	NEW	STRUCT	STRUCTURAL
ADJ	ADJUSTABLE	F.G.	FINISH GRADE	N.I.C.	NOT IN CONTRACT	SUSP	SUSPENDED
A.F.F.	ABOVE FINISH FLOOR	F.H.	FIRE HYDRANT	NO.	NUMBER	SYM	SYMMETRICAL
ALT	ALTERNATE	F.H.W.S.	FLAT HEAD WOOD SCREW	NOM	NOMINAL		
ALUM	ALUMINUM	FIN.	FINISH			T&G	TONGUE & GROOVE
APPROX	APPROXIMATE	FLR	FLOOR	OBSC	OBSCURE	TEL	TELEPHONE
A.T.	ACOUSTIC TILE	FLUOR	FLUORESCENT	O.C.	ON CENTER	THK	THICK
		F.O.F.	FACE OF FINISH	O.D.	OUTSIDE DIAMETER	T.O.	TOP OF
		F.O.M.	FACE OF MASONRY	O.P.P.	OPPOSITE	T.O.C.	TOP OF CONCRETE
		F.O.S.	FACE OF STUD	OZ.	OUNCE	TYP	TYPICAL
		FTG	FOOTING	O.F.C.I.	OWNER FURNISHED, CONTRACTOR INSTALLED	UBC	UNIFORM BUILDING CODE
BLDG	BUILDING	GA.	GAUGE	O.F.O.I.	OWNER FURNISHED, OWNER INSTALLED	U.O.N.	UNLESS OTHERWISE NOTED
BLKG	BLOCKING	GALV	GALVANIZED			UNREINF	UNREINFORCED
B.O.	BOTTOM OF	GLB	GLUE LAMINATED BEAM			UR	URINAL
BOT	BOTTOM	G.S.M.	GALVANIZED SHEET METAL				
B.U.R.	BUILT UP ROOFING	GWB	GYPSTUM WALLBOARD	PERF	PERFORATED	VCT	VINYL COMPOSITION TILE
				PL	PLATE	VERT	VERTICAL
CAB	CABINET			PLAS	PLASTIC	VEST.	VESTIBULE
CBC	CALIFORNIA BUILDING CODE	H.B.	HOSE BIBB	PLYWD	PLYWOOD	WVC	VINYL WALL COVERING
C.J.	CONSTRUCTION JOINT	H.C.	HOLLOW CORE	PMF	PRESSED METAL FRAME		
CLG	CEILING	HDWR	HARDWARE	PR	PAIR	W	WIDTH
CLR	CLEAR	HDWD	HARDWOOD	PSI	POUNDS PER SQUARE INCH	WC	WATER CLOSET
CMU	CONCRETE MASONRY UNIT	H.M.	HOLLOW METAL	P.T.	PRESSURE TREATED	WD	WOOD
C.O.	CLEAN OUT	HORIZ	HORIZONTAL	Q.T.	QUARRY TILE	W.H.	WATER HEATER
COL	COLUMN	HT	HEIGHT			WSCT	WAINSCOT
COMP	COMPOSITION	I.D.	INSIDE DIAMETER	RAM	RADIUS	WT	WEIGHT
CONT	CONTINUOUS	INSUL	INSULATION	R.D.	RUBBERIZED ASPHALT MEMBRANE		
CONC	CONCRETE	INT	INTERIOR	R.O.	ROUGH OPENING		
CTSK	COUNTERSUNK	JAN	JANITOR	RWD	REDWOOD	&	AND
		JT	JOINT	REINF	REINFORCE	L	ANGLE
				REQ'D	REQUIRED	AT	AT
				RM	ROOM	☉	CENTER LINE
				R.O.	ROUGH OPENING	○	DIAMETER
		L	LENGTH	RWL	RAIN WATER LEADER	#	NUMBER
		LAM	LAMINATED	R.H.W.S.	ROUND HEAD WOOD SCREW	0/	OVER
		LAV	LAVATORY			W/	WITH
		LB.	POUND				
		L.S.	LAG SCREW	S.C.	SOLID CORE		
(E)	EXISTING	LT	LIGHT	SHT	SHEET		
EA	EACH			SIM	SIMILAR		
E.J.	EXPANSION JOINT			S.M.S.	SHEET METAL SCREW		
ELEC	ELECTRICAL			SPEC	SPECIFICATION		
ELEV	ELEVATION	MFR	MANUFACTURER	SQ	SQUARE		
EQ.	EQUAL	MAX	MAXIMUM				
EQUIP.	EQUIPMENT	MECH	MECHANICAL				
EXT.	EXTERIOR						

CLASSROOM	—ROOM NAME	(E) WALLS
[123]	—ROOM NUMBER	(E) HALF WALLS
↑ 2	—INTERIOR ELEVATIONS	(E) WINDOW
② A31	—DETAIL NUMBER DRAWING NUMBER	
① A4.1	—SECTION NUMBER DRAWING NUMBER	
① A4.1	—SECTION NUMBER DRAWING NUMBER	
③ A8.2	—WALL ELEVATED (FILLED) ELEVATION NUMBER DRAWING NUMBER	
④ A4.2	—ELEVATION NUMBER DRAWING NUMBER	
①	—KEYNOTE	
②44	—DOOR NUMBER	
④	—WINDOW NUMBER	
—	—WALL TYPE/NOMINAL THICKNESS	
+9'-0"	—INDICATES CEILING HEIGHT ABOVE F.F.E. ON REFL. CEILING PLAN	
④	—FINISH KEY	
④ +6'-10" A.F.F.	—ELEVATION SYMBOL	
- 4:12	—ROOF PITCH	
— 2435.12	—NEW GRADE ELEVATION T.O.P.	
—	—(E) GRADE ELEVATION	

SYMBOLS : SECURITY SYSTEM

①	SECURITY - DOOR CONTACT SENSOR.	ADC	SECURITY - AUTOMATIC DOOR CLOSER.	AS	SECURITY - AUDIO IMPACT SENSOR.	□	DOOR RELEASE BUTTON.
EX-D	SECURITY - EXISTING DOOR CONTACT SENSOR.	KP	SECURITY - KEYPAD ACCESS CONTROL UNIT.	EX-AS	SECURITY - EXISTING COAXIAL CCTV CAMERA.	(E) □	EXISTING DOOR RELEASE BUTTON.
EL	SECURITY - ELECTRICALLY OPERATED LOCK.	EX-KP	SECURITY - EXIST. KEYPAD ACCESS CONTROL UNIT.	CCTV-360	SECURITY - CCTV CAMERA-360° VIEW.	SEC	SECURITY AREA CONTROL PANEL.
EX-EL	SECURITY - EXISTING ELECTRICALLY OPERATED LOCK.	CR	SECURITY - CARD READER ACCESS CONTROL UNIT.	CCTV-180	SECURITY - CCTV CAMERA-180° VIEW.	(RDR)	REMOTE DOOR RELEASE
M	SECURITY - MOTION DETECTOR 180°.	EX-CR	SECURITY - EXIST. CARD READER ACCESS CONTROL UNIT.	CCTV-SW	SECURITY - SWITCHABLE CCTV CAMERA.	(E) SEC	EXISTING SECURITY AREA CONTROL PANEL.
EX-M	SECURITY - EXISTING MOTION DETECTOR.	PANIC	SECURITY - PANIC BUTTON UNIT.	CALL LIGHT	PANIC BUTTON-CALL LIGHT	P.B.-CON	PANIC BUTTON CONSOLE.
360° M	SECURITY - MOTION DETECTOR 360°.	EX-PANIC	SECURITY - EXISTING WIRELESS PANIC BUTTON UNITS.				

EXISTING ALARM HORN. (E)-X1

EMERGENCY EGRESS DOOR HARDWARE (E)-ED

DOOR OPEN DURING BUSINESS HRS. HOURS SHOWN ARE FOR SYSTEM PROGRAMMING. HOURS MAY CHANGE. *SEE LOCATION FOR POSTED HRS.

REVISION	DATE	DESCRIPTION
A	1/24/11	ADDENDUM - SEE SHEET FOR REVISIONS

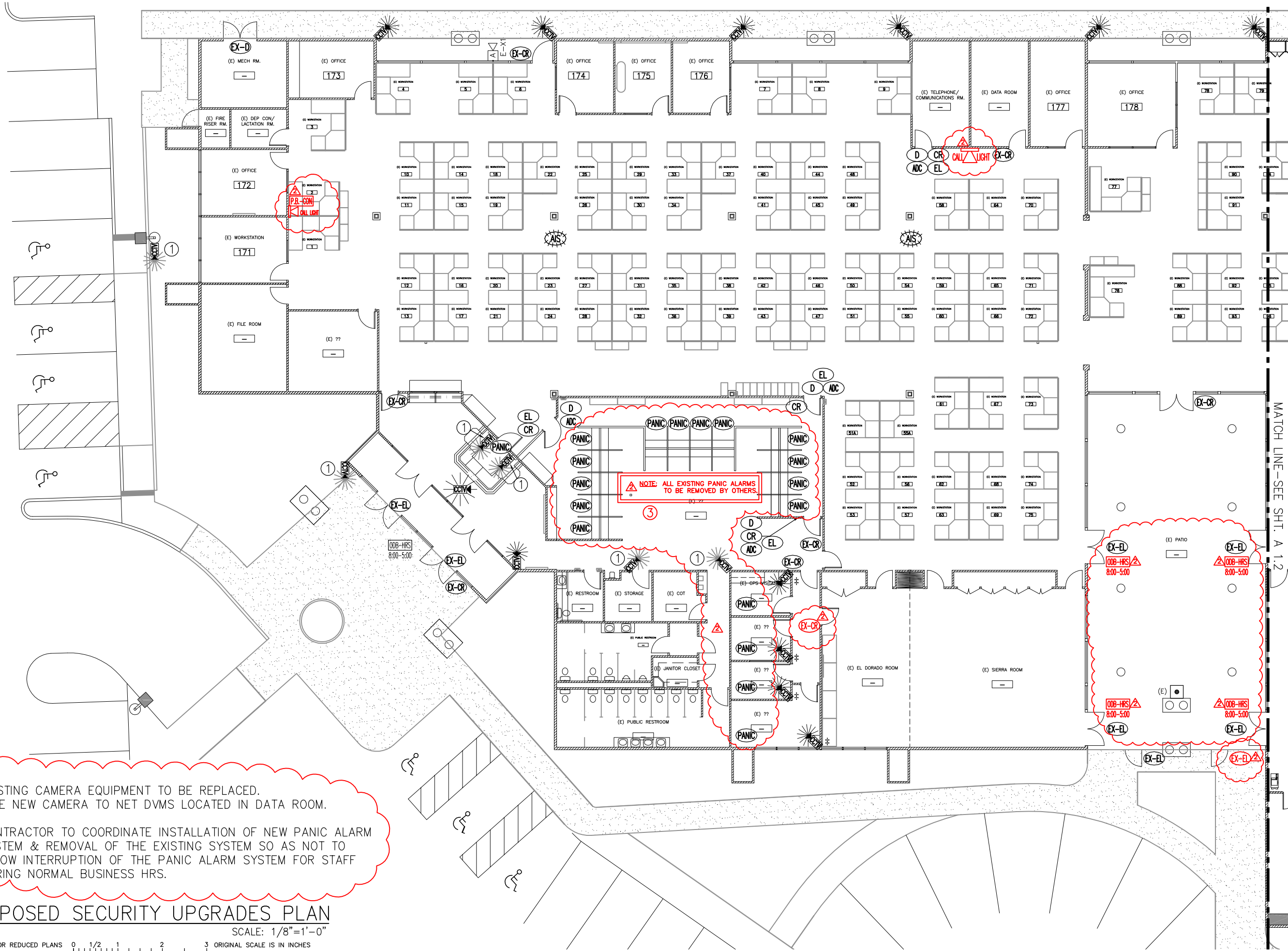
ACCESS CONTROL/CCTV/
INTRUSION ALARM SYSTEM
SECURITY SYMBOLS & ABBREVIATIONS

MULTIPLE SITES
EL DORADO COUNTY

County of El Dorado
Department of Transportation
Facilities Engineering Division
2850 Fair Lane Court Placerville, CA 95667 (530) 621-5900

THIS DRAWING IS NOT FINAL OR TO BE USED FOR CONSTRUCTION UNTIL IT IS SIGNED BY THE ARCHITECT/ENGINEER.

DATE:	12/03/10
DESIGNED BY:	-
DRAWN BY:	SB
CHECKED BY:	DL
FILE #	SEE PLOT STAMP
PROJECT #	-
SHEET NO.	A 0.1



NOTE:

① EXISTING CAMERA EQUIPMENT TO BE REPLACED. WIRE NEW CAMERA TO NET DVMS LOCATED IN DATA ROOM.

③ CONTRACTOR TO COORDINATE INSTALLATION OF NEW PANIC ALARM SYSTEM & REMOVAL OF THE EXISTING SYSTEM SO AS NOT TO ALLOW INTERRUPTION OF THE PANIC ALARM SYSTEM FOR STAFF DURING NORMAL BUSINESS HRS.

PROPOSED SECURITY UPGRADES PLAN

SCALE: 1/8"=1'-0"

FOR REDUCED PLANS 0 1/2 1 2 3 ORIGINAL SCALE IS IN INCHES

REVISION	DATE	DESCRIPTION
1	1/24/11	ADDUM- SEE SHEETS FOR REVISIONS

**HUMAN SERVICES
INTRUSION ALARM SYSTEM
SECURITY UPGRADE PLAN**

**HUMAN SERVICES
3057 BRIW ROAD
PLACERVILLE, CA 95667**

County of El Dorado
Department of Transportation
Facilities Engineering Division

2850 Fair Lane Court Placerville, CA 95667 (530) 621-5900

THIS DRAWING IS NOT FINAL OR TO BE USED FOR CONSTRUCTION UNTIL IT IS SIGNED BY THE ARCHITECT/ENGINEER.

DATE:	12/03/10
DESIGNED BY:	-
DRAWN BY:	SB
CHECKED BY:	DL
FILE #	SEE PLOT STAMP
PROJECT #	90400

SHEET NO.

A 1.1

PAGE 4 OF 20

 = CHILD SUPPORT SERVICES AREA.
SEE SHEET A 2.1 FOR WORK IN THIS AREA.



PLAN NORTH

HUMAN SERVICES—EAST SIDE
PROPOSED SECURITY UPGRADES PLAN

SCALE: 1/8"=1'-0"

NOTE:

- ② THIS CARD READER IS CONNECTED TO THE EXISTING ACCESS CONTROL SYSTEM FOR CHILD SUPPORT SERVICES DEPARTMENT.

FOR REDUCED PLANS 0 1/2 1 2 3 ORIGINAL SCALE IS IN INCHES

CONTRACT NO. PW 10-30566 CIP No. 90400

REVISION	DATE	DESCRIPTION
A	1/24/11	ADDITION- SEE SHEETS FOR REVISIONS

ACCESS CONTROL/CCTV/
INTRUSION ALARM SYSTEM
SECURITY UPGRADE PLAN

HUMAN SERVICES
3057 BRIW ROAD
PLACERVILLE, CA 95667

County of El Dorado
Department of Transportation
Facilities Engineering Division
2850 Fair Lane Court Placerville, CA 95667 (530) 621-5900

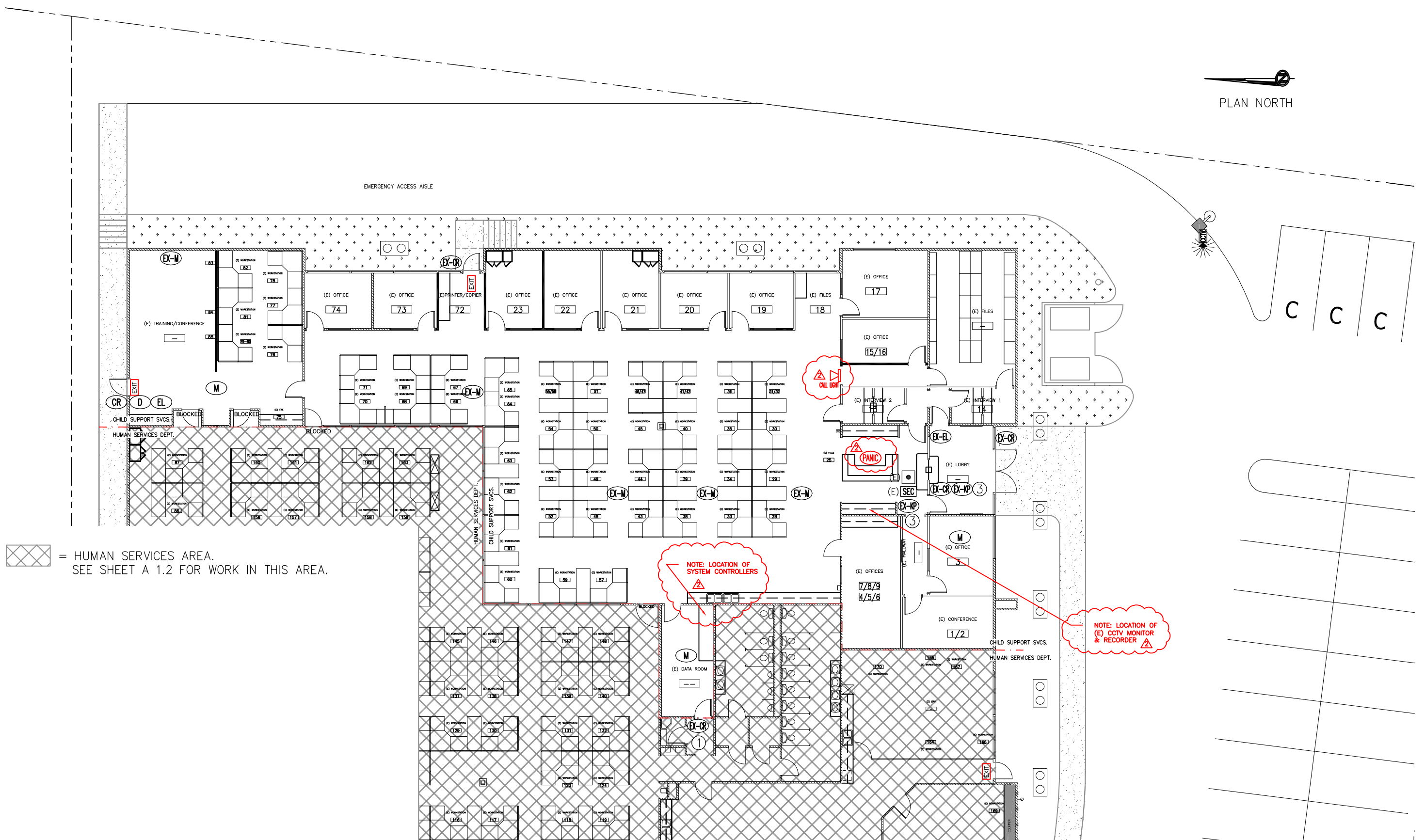
THIS DRAWING IS NOT FINAL OR TO BE USED FOR CONSTRUCTION UNTIL IT IS SIGNED BY THE ARCHITECT/ENGINEER.

DATE:	12/03/10
DESIGNED BY:	-
DRAWN BY:	SB
CHECKED BY:	DL
FILE #	SEE PLOT STAMP
PROJECT #	90400

SHEET NO.

A 1.2

PAGE 5 OF 20




 = HUMAN SERVICES AREA.
SEE SHEET A 1.2 FOR WORK IN THIS AREA.


NOTE: LOCATION OF SYSTEM CONTROLLERS 

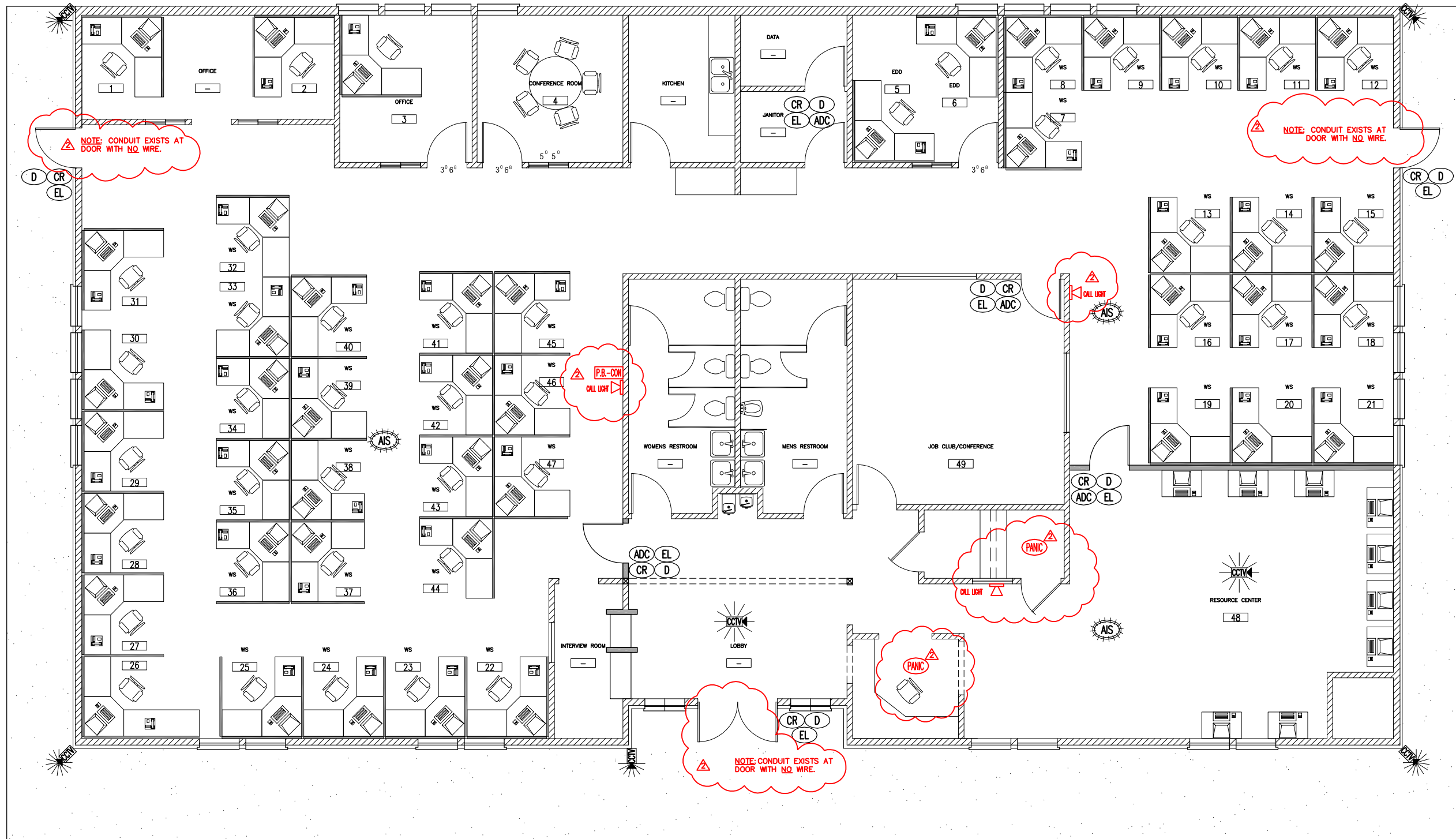
NOTE: LOCATION OF (E) CCTV MONITOR & RECORDER 

- NOTES:
- ① THIS CARD READER IS CONNECTED TO THE EXISTING ACCESS CONTROL SYSTEM FOR CHILD SUPPORT SERVICES DEPARTMENT.
 - ② CHILD SUPPORT SERVICES CURRENTLY HAS 3 PARKING LOT CCTV CAMERAS. SEE CVR 2.0 FOR LOCATIONS.
 - ③ EXISTING KEYPAD TO BE REMOVED.

PROPOSED SECURITY UPGRADES PLAN

SCALE: 1/8"=1'-0"
FOR REDUCED PLANS  ORIGINAL SCALE IS IN INCHES

REVISION	DATE	DESCRIPTION
A	1/24/11	ADDENDUM - SEE SHEETS FOR REVISIONS
ACCESS CONTROL/CCTV/ INTRUSION ALARM SYSTEM SECURITY UPGRADE PLAN		
CHILD SUPPORT SERVICES 3057 BRIW ROAD PLACERVILLE, CA 95667		
County of El Dorado Department of Transportation Facilities Engineering Division		
 2850 Fair Lane Court Placerville, CA 95667 (530) 621-5900		
<small>THIS DRAWING IS NOT FINAL OR TO BE USED FOR CONSTRUCTION UNTIL IT IS SIGNED BY THE ARCHITECT/ENGINEER.</small>		
DATE: 12/03/10		
DESIGNED BY: - DRAWN BY: SB CHECKED BY: DL		
FILE: - SEE PLOT STAMP		
PROJECT # 90400		
SHEET NO. A 2.1		
PAGE 7 OF 20		



PLAN NORTH

REVISION	DATE	DESCRIPTION
1	1/24/11	ADDITION - SEE SHEETS FOR REVISIONS

ACCESS CONTROL/CCTV/
INTRUSION ALARM SYSTEM
SECURITY UPGRADE PLAN

HUMAN SERVICES
3047 BRIW RD.
PLACERVILLE, CA 95667

County of El Dorado
Department of Transportation
Facilities Engineering Division
2850 Fair Lane Court Placerville, CA 95667 (530) 621-5900

THIS DRAWING IS NOT FINAL OR TO BE USED FOR CONSTRUCTION UNTIL IT IS SIGNED BY THE ARCHITECT/ENGINEER.

DATE:	12/03/10
DESIGNED BY:	-
DRAWN BY:	SB
CHECKED BY:	DL
FILE #	SEE PLOT STAMP
PROJECT #	

SHEET NO.
A 3.1
PAGE 9 OF 20

PROPOSED SECURITY UPGRADES PLAN
SCALE: 1/4"=1'-0"

FOR REDUCED PLANS 0 1/2 1 2 3 ORIGINAL SCALE IS IN INCHES

LEGEND: EXISTING SYSTEM

- Area#25 Button#25 = EXISTING PANIC BUTTON ZONES & BUTTON #'S
- = ZONE OR AREA #1
- = ZONE OR AREA #2
- = ZONE OR AREA #3
- = ZONE OR AREA #4
- = ZONE OR AREA #5
- = ZONE OR AREA #6
- = ZONE OR AREA #7
- = ZONE OR AREA #8
- = ZONE OR AREA #9

NOTE:

- ① EXISTING SYSTEM TO BE INCORPORATED INTO NEW ALARM SYSTEM
- ② REPAIR DOORS TO RECEIVE ACCESS CONTROL HARDWARE AS NECESSARY.
- ③ EXISTING PANIC BUTTON SYSTEM IS AN INOVONICS 64 CHANNEL SYSTEM, MODEL FA464D. SYSTEM USES WIRELESS TWO BUTTON FOBS. ONE BUTTON ACTIVATES PANEL @ RECEPTION. SECOND BUTTON ACTIVATES AUDIBLE ALARM IN BUILDING AND NOTIFIES POLICE.



MAIN FLOOR



PROPOSED SECURITY UPGRADES PLAN

SCALE: 1/8" = 1'-0"

FOR REDUCED PLANS 0 1/2 1 2 3 ORIGINAL SCALE IS IN INCHES

REVISION	DATE	DESCRIPTION
1	1/24/11	ADDITION - SEE SHEETS FOR REVISIONS

ACCESS CONTROL/CCTV/
INTRUSION ALARM SYSTEM
SECURITY UPGRADE PLAN

HUMAN SERVICES
937 SPRING STREET
PLACERVILLE, CA 95667

County of El Dorado
Department of Transportation
Facilities Engineering Division
2850 Fair Lane Court Placerville, CA 95667 (530) 621-5900

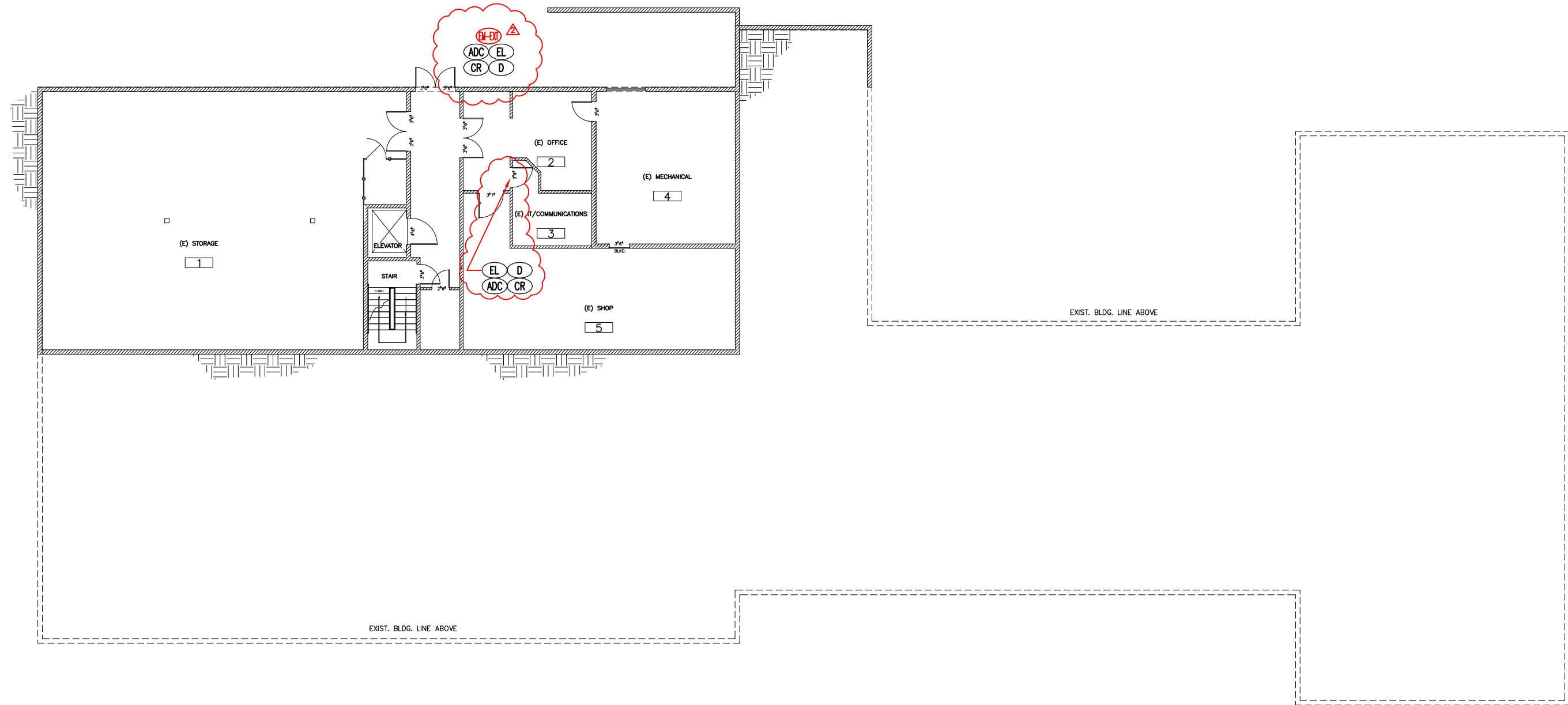
THIS DRAWING IS NOT FINAL OR TO BE USED FOR CONSTRUCTION UNTIL IT IS SIGNED BY THE ARCHITECT/ENGINEER.

DATE:	12/03/10
DESIGNED BY:	-
DRAWN BY:	SB
CHECKED BY:	DL
FILE #	
SEE PLOT STAMP	
PROJECT #	

SHEET NO.
A 4.1
PAGE 11 OF 20

NOTE:

② REPAIR DOORS TO RECEIVE ACCESS CONTROL HARDWARE AS NECESSARY. 




BASEMENT LEVEL

PROPOSED SECURITY UPGRADES PLAN

SCALE: 1/8"=1'-0"

FOR REDUCED PLANS 0 1/2 1 2 3 ORIGINAL SCALE IS IN INCHES



REVISION	DATE	DESCRIPTION
	1/24/11	ADDENDUM - SEE SHEETS FOR REVISIONS

ACCESS CONTROL/CCTV/
INTRUSION ALARM SYSTEM
SECURITY UPGRADE PLAN

HUMAN SERVICES
937 SPRING STREET
PLACERVILLE, CA 95667

County of El Dorado
Department of Transportation
Facilities Engineering Division
2850 Fair Lane Court Placerville, CA 95667 (530) 621-5900

THIS DRAWING IS NOT FINAL OR TO BE USED FOR CONSTRUCTION UNTIL IT IS SIGNED BY THE ARCHITECT/ENGINEER.

DATE: 12/03/10

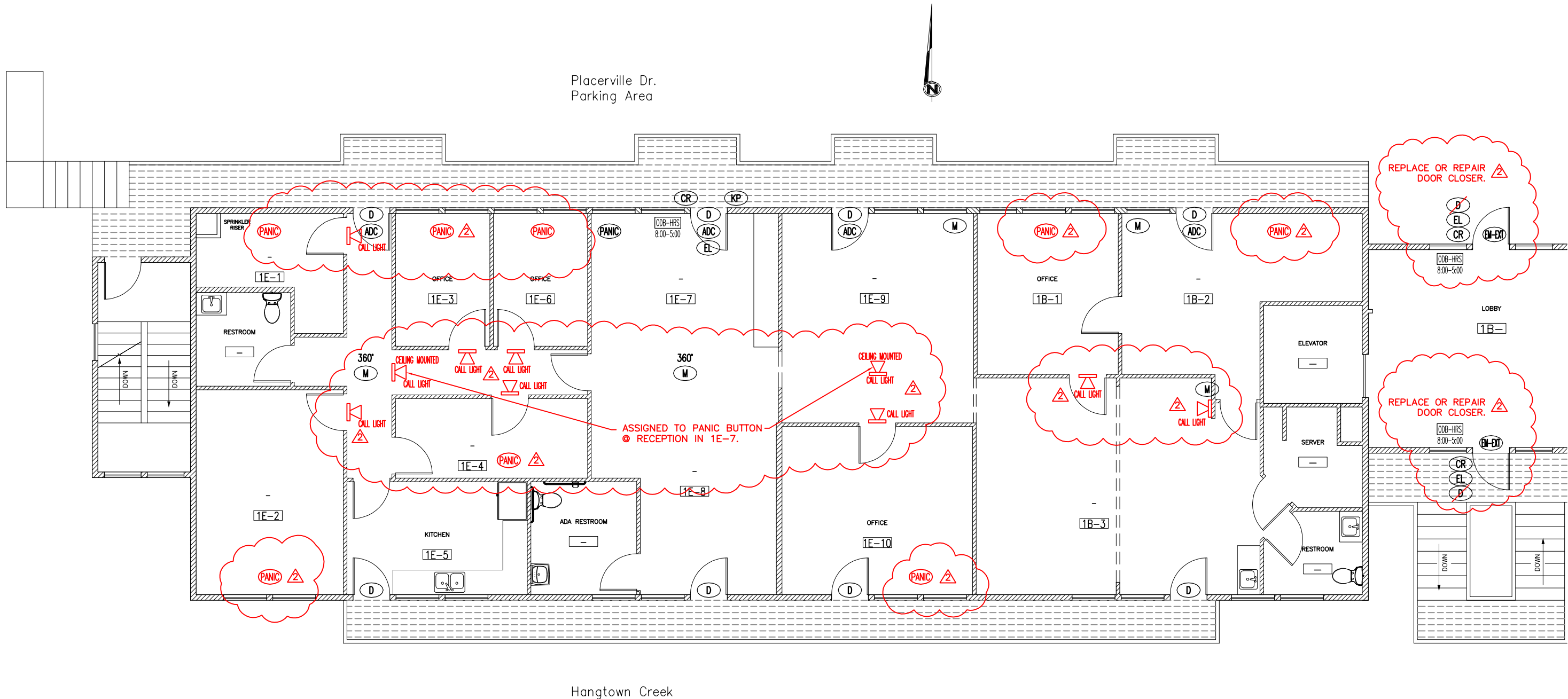
DESIGNED BY: -
DRAWN BY: SB
CHECKED BY: DL

FILE #
SEE PLOT STAMP
PROJECT #

SHEET NO.

A 4.2

PAGE 12 OF 20



Placerville Dr.
Parking Area



Hangtown Creek

PROPOSED SECURITY UPGRADES PLAN
SCALE: 1/4"=1'-0"

WEST SIDE-UPPER LEVEL

FOR REDUCED PLANS 0 1/2 1 2 3 ORIGINAL SCALE IS IN INCHES

CONTRACT NO. PW 10-30566 CIP NO. 90400

REVISION	DATE	DESCRIPTION
A	1/24/11	ADDITION- SEE SHEETS FOR REVISIONS

ACCESS CONTROL/CCTV/
INTRUSION ALARM SYSTEM
SECURITY UPGRADE PLAN

HEALTH SERVICES
670 PLACERVILLE DR.
PLACERVILLE, CA 95667

County of El Dorado
Department of Transportation
Facilities Engineering Division
2850 Fair Lane Court Placerville, CA 95667 (530) 621-5900

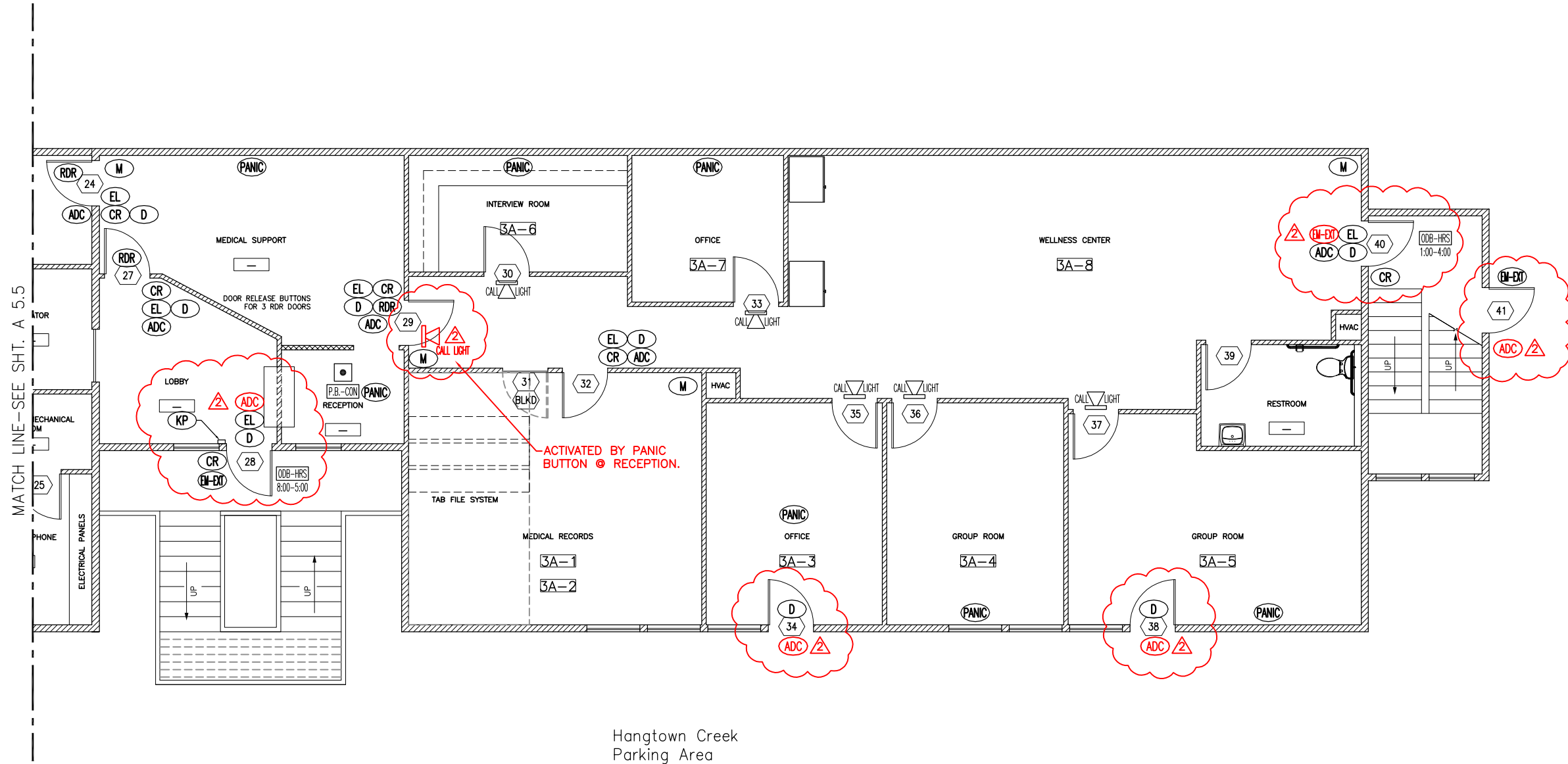
THIS DRAWING IS NOT FINAL OR TO BE USED FOR CONSTRUCTION UNTIL IT IS SIGNED BY THE ARCHITECT/ENGINEER.

DATE:	12/03/10
DESIGNED BY:	-
DRAWN BY:	SB
CHECKED BY:	DL
FILE #	SEE PLOT STAMP
PROJECT #	

SHEET NO.
A 5.1
PAGE 14 OF 20

11-0010.2D.13

Placerville Dr.
Parking Area



ACTIVATED BY PANIC
BUTTON @ RECEPTION.

Hangtown Creek
Parking Area

EAST SIDE— LOWER LEVEL

PROPOSED SECURITY UPGRADES PLAN
SCALE: 1/4"=1'-0"

FOR REDUCED PLANS 0 1/2 1 2 3 ORIGINAL SCALE IS IN INCHES

CONTRACT NO. PW 10-30566 CIP NO. 90400
11-0010.2D.14

REVISION	DATE	DESCRIPTION
A	1/24/11	ADDITION- SEE SHEETS FOR REVISIONS

ACCESS CONTROL/CCTV/
INTRUSION ALARM SYSTEM
SECURITY UPGRADE PLAN

HEALTH SERVICES
670 PLACERVILLE DR.
PLACERVILLE, CA 95667

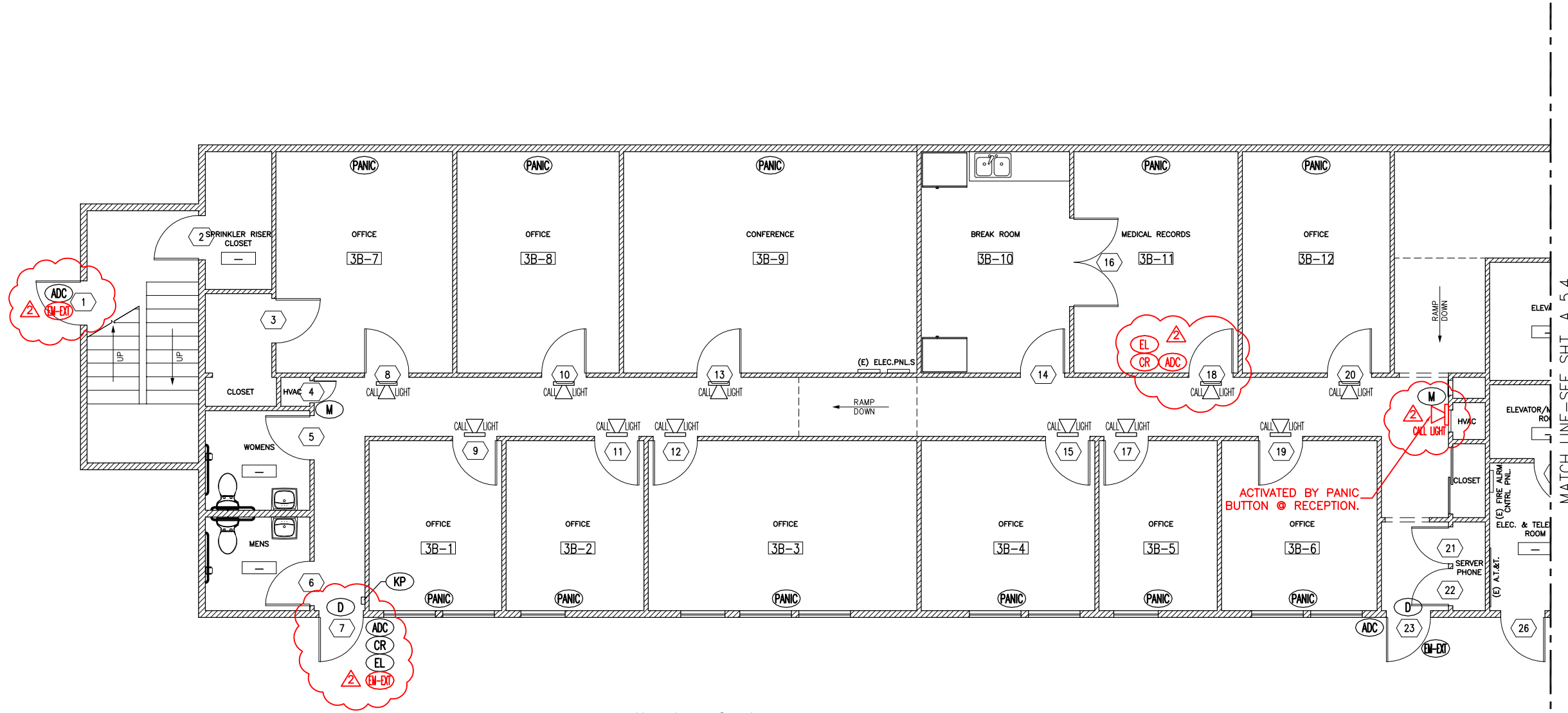
County of El Dorado
Department of Transportation
Facilities Engineering Division
2850 Fair Lane Court Placerville, CA 95667 (530) 621-5900

THIS DRAWING IS NOT FINAL OR
TO BE USED FOR CONSTRUCTION
UNTIL IT IS SIGNED BY THE
ARCHITECT/ENGINEER.

DATE:	12/03/10
DESIGNED BY:	-
DRAWN BY:	SB
CHECKED BY:	DL
FILE #	SEE PLOT STAMP
PROJECT #	

SHEET NO.
A 5.4
PAGE 17 OF 20

Placerville Dr.
Parking Area



Hangtown Creek
Parking Area

WEST SIDE - LOWER LEVEL

PROPOSED SECURITY UPGRADES PLAN
SCALE: 1/4" = 1'-0"

FOR REDUCED PLANS 0 1/2 1 2 3 ORIGINAL SCALE IS IN INCHES

CONTRACT NO. PW 10-30566 CIP NO. 90400

REVISION	DATE	DESCRIPTION
A	1/24/11	ADDITION - SEE SHEETS FOR REVISIONS

ACCESS CONTROL/CCTV/
INTRUSION ALARM SYSTEM
SECURITY UPGRADE PLAN

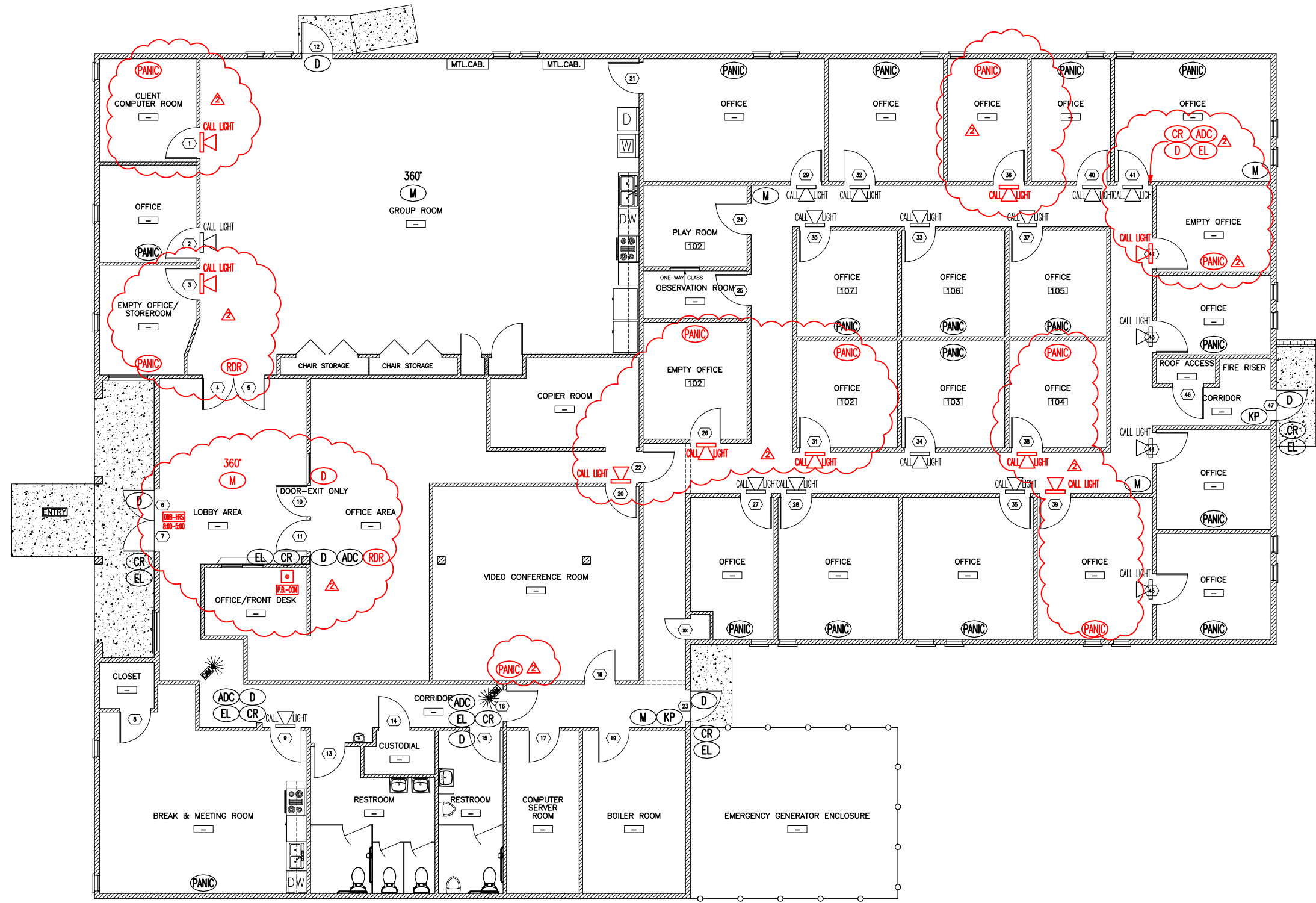
HEALTH SERVICES
670 PLACERVILLE DR.
PLACERVILLE, CA 95667

County of El Dorado
Department of Transportation
Facilities Engineering Division
2850 Fair Lane Court Placerville, CA 95667 (530) 621-5900

THIS DRAWING IS NOT FINAL OR TO BE USED FOR CONSTRUCTION UNTIL IT IS SIGNED BY THE ARCHITECT/ENGINEER.

DATE:	12/03/10
DESIGNED BY:	-
DRAWN BY:	SB
CHECKED BY:	DL
FILE #	SEE PLOT STAMP
PROJECT #	

SHEET NO.
A 5.5
PAGE 18 OF 20



PROPOSED SECURITY UPGRADES PLAN
SCALE: 3/16"=1'-0"

FOR REDUCED PLANS 0 1/2 1 2 3 ORIGINAL SCALE IS IN INCHES

CONTRACT NO. PW 10-30566 CIP NO. 90400
11-0010.2D.16

REVISION	DATE	DESCRIPTION
A	1/24/11	ADDITION - ADDITIONAL SECURITY DEVICES

ACCESS CONTROL/CCTV/
INTRUSION ALARM SYSTEM
SECURITY UPGRADE PLAN

HEALTH SERVICES
1900 LAKE TAHOE BLVD.
SOUTH LAKE TAHOE, CA 96150

County of El Dorado
Department of Transportation
Facilities Engineering Division
2850 Fair Lane Court Placerville, CA 95667 (530) 621-5900

THIS DRAWING IS NOT FINAL OR TO BE USED FOR CONSTRUCTION UNTIL IT IS SIGNED BY THE ARCHITECT/ENGINEER.

DATE:	12/03/10
DESIGNED BY:	-
DRAWN BY:	SB
CHECKED BY:	DL
FILE #	SEE PLOT STAMP
PROJECT #	

SHEET NO.
A 6.1
PAGE 20 OF 20

PROPOSAL PAY ITEMS AND BID PRICE SCHEDULE

ACCESS CONTROL/CCTV/INTRUSION ALARM SYSTEM

for the

HUMAN SERVICES/ CHILD SUPPORT SERVICES/ HEALTH SERVICES DEPARTMENTS

PLACERVILLE & SOUTH LAKE TAHOE

CONTRACT NO. PW 10-30566, CIP No. 90400

BASE BID-SCHEDULE A

Human Services Department

3057 Briw Road, Placerville

ITEM	DESCRIPTION	EST. QTY.	UNIT OF MEASURE	UNIT PRICE	ITEM TOTAL
Access Control System					
1	S2 NetBox Access Controller	2	EA		
2	Door Package	4	EA		
Intrusion Detection System					
3	Intrusion Detection Controller	2	EA		
4	Sonitrol Audio Sensor	3	EA		
5	Panic Button System	1	LS		
CCTV Surveillance System					
6	Video Surveillance Viewing and Recording Software	1	LS		
7	CCTV Cameras	21	EA		
Total Bid, 3057 Briw Road, Human Services Dept.					

Child Support Services Department

3057 Briw Road, Placerville

ITEM	DESCRIPTION	EST. QTY.	UNIT OF MEASURE	UNIT PRICE	ITEM TOTAL
Access Control System					
1	S2 NetBox Access Controller	1	EA		
2	Door Package	1	EA		
Intrusion Detection System					
3	Intrusion Detection Controller	1	EA		
4	Dual Technology Motion/IR Detector	3	EA		
5	Panic Button System	1	LS		
CCTV Surveillance System					
6	Video Surveillance Viewing and Recording Software	1	LS		
7	Existing CCTV Cameras	3	EA		
Total Bid, 3057 Briw Road, Child Support Services Dept.					

**PROPOSAL PAY ITEMS AND BID PRICE SCHEDULE
BASE BID-SCHEDULE A (cont.)**

**Human Services Department
3047 Briw Road, Placerville**

ITEM	DESCRIPTION	EST. QTY.	UNIT OF MEASURE	UNIT PRICE	ITEM TOTAL
Access Control System					
1	S2 NetBox Access Controller	1	EA		
2	Door Package	7	EA		
Intrusion Detection System					
3	Intrusion Detection Controller	1	EA		
4	Sonitrol Audio Sensor	3	EA		
5	Panic Button System	1	LS		
CCTV Surveillance System					
6	Video Surveillance Viewing and Recording Software	1	LS		
7	CCTV Cameras	7	EA		
Total Bid, 3047 Briw Road					

**Human Services Department
937 Spring Street., Placerville**

ITEM	DESCRIPTION	EST. QTY.	UNIT OF MEASURE	UNIT PRICE	ITEM TOTAL
Access Control System					
1	S2 NetBox Access Controller	1	EA		
2	Door Package	9	EA		
Intrusion Detection System					
3	Intrusion Detection Controller	2	EA		
4	Panic Button System	1	LS		
Total Bid, 937 Spring Street					

**Health Services Department
670 Placerville Drive, Placerville**

ITEM	DESCRIPTION	EST. QTY.	UNIT OF MEASURE	UNIT PRICE	ITEM TOTAL
Access Control System					
1	S2 NetBox Access Controller	2	EA		
2	Door Package	28	EA		
Intrusion Detection System					
3	Intrusion Detection Controller	4	EA		
4	Dual Technology Motion/IR Detector	15	EA		
5	Keypad	4	EA		
6	Panic Button System	1	LS		
Total Bid, 670 Placerville Drive					

**PROPOSAL PAY ITEMS AND BID PRICE SCHEDULE
BASE BID-SCHEDULE A (cont.)**

**Health Services Department
1900 Lake Tahoe Boulevard, South Lake Tahoe**

ITEM	DESCRIPTION	EST. QTY.	UNIT OF MEASURE	UNIT PRICE	ITEM TOTAL
Access Control System					
1	S2 NetBox Access Controller	1	EA		
2	Door Package	8	EA		
Intrusion Alarm					
3	Intrusion Detection Controller	2	EA		
4	Dual Technology Motion/IR Detector	5	EA		
5	Keypad	2	EA		
6	Panic Button System	1	LS		
CCTV Surveillance System					
7	Video Surveillance Viewing and Recording Software	1	LS		
8	CCTV Cameras	2	EA		
Total Bid, 1900 Lake Tahoe Boulevard					

Web-Based Central Monitoring System and Training

ITEM	DESCRIPTION	EST. QTY.	UNIT OF MEASURE	UNIT PRICE	ITEM TOTAL
Web-Based Central Monitoring System and Training					
1	S2 Enterprise Server Central Monitoring System	1	LS		
2	Training on Systems Operation	40	HR		
Total Web Based Central Monitoring System and Training					

**EXHIBIT A
CONTRACTOR'S BID AND BID SCHEDULE**

**ACCESS CONTROL/CCTV/INTRUSION ALARM SYSTEM
for the
HUMAN SERVICES/ CHILD SUPPORT SERVICES/ HEALTH SERVICES DEPARTMENTS
PLACERVILLE & SOUTH LAKE TAHOE
CONTRACT NO. PW 10-30566, CIP No. 90400**

**Human Services Department
3057 Briw Road, Placerville**

ITEM	DESCRIPTION	EST. QTY.	UNIT OF MEASURE	UNIT PRICE	ITEM TOTAL
Access Control System					
1	S2 NetBox Access Controller	2	EA		
2	Door Package	4	EA		
Intrusion Detection System					
3	Intrusion Detection Controller	2	EA		
4	Sonitrol Audio Sensor	3	EA		
5	Panic Button System	1	LS		
CCTV Surveillance System					
6	Video Surveillance Viewing and Recording Software	1	LS		
7	CCTV Cameras	21	EA		
Total Bid, 3057 Briw Road, Human Services Dept.					

**Child Support Services Department
3057 Briw Road, Placerville**

ITEM	DESCRIPTION	EST. QTY.	UNIT OF MEASURE	UNIT PRICE	ITEM TOTAL
Access Control System					
1	S2 NetBox Access Controller	1	EA		
2	Door Package	1	EA		
Intrusion Detection System					
3	Intrusion Detection Controller	1	EA		
4	Dual Technology Motion/IR Detector	3	EA		
5	Panic Button System	1	LS		
CCTV Surveillance System					
6	Video Surveillance Viewing and Recording Software	1	LS		
7	Existing CCTV Cameras	3	EA		
Total Bid, 3057 Briw Road, Child Support Services Dept.					

**Human Services Department
3047 Briw Road, Placerville**

ITEM	DESCRIPTION	EST. QTY.	UNIT OF MEASURE	UNIT PRICE	ITEM TOTAL
Access Control System					
1	S2 NetBox Access Controller	1	EA		
2	Door Package	7	EA		
Intrusion Detection System					
3	Intrusion Detection Controller	1	EA		
4	Sonitrol Audio Sensor	3	EA		
5	Panic Button System	1	LS		
CCTV Surveillance System					
6	Video Surveillance Viewing and Recording Software	1	LS		
7	CCTV Cameras	7	EA		
Total Bid, 3047 Briw Road					

**Human Services Department
937 Spring Street., Placerville**

ITEM	DESCRIPTION	EST. QTY.	UNIT OF MEASURE	UNIT PRICE	ITEM TOTAL
Access Control System					
1	S2 NetBox Access Controller	1	EA		
2	Door Package	9	EA		
Intrusion Detection System					
3	Intrusion Detection Controller	2	EA		
4	Panic Button System	1	LS		
Total Bid, 937 Spring Street					

**Health Services Department
670 Placerville Drive, Placerville**

ITEM	DESCRIPTION	EST. QTY.	UNIT OF MEASURE	UNIT PRICE	ITEM TOTAL
Access Control System					
1	S2 NetBox Access Controller	2	EA		
2	Door Package	28	EA		
Intrusion Detection System					
3	Intrusion Detection Controller	4	EA		
4	Dual Technology Motion/IR Detector	15	EA		
5	Keypad	4	EA		
6	Panic Button System	1	LS		
Total Bid, 670 Placerville Drive					

Health Services Department
 1900 Lake Tahoe Boulevard, South Lake Tahoe

ITEM	DESCRIPTION	EST. QTY.	UNIT OF MEASURE	UNIT PRICE	ITEM TOTAL
Access Control System					
1	S2 NetBox Access Controller	1	EA		
2	Door Package	8	EA		
Intrusion Alarm					
3	Intrusion Detection Controller	2	EA		
4	Dual Technology Motion/IR Detector	5	EA		
5	Keypad	2	EA		
6	Panic Button System	1	LS		
CCTV Surveillance System					
7	Video Surveillance Viewing and Recording Software	1	LS		
8	CCTV Cameras	2	EA		
Total Bid, 1900 Lake Tahoe Boulevard					

Web-Based Central Monitoring System and Training

ITEM	DESCRIPTION	EST. QTY.	UNIT OF MEASURE	UNIT PRICE	ITEM TOTAL
Web-Based Central Monitoring System and Training					
1	S2 Enterprise Server Central Monitoring System	1	LS		
2	Training on Systems Operation	40	HR		
Total Bid, Web Based Central Monitoring System and Training					

County of El Dorado Application for Progress Payment

Project # CIP # 90400		Contract # PW 10-30566		Project Description: Access Control/CCTV/Intrusion Alarm Systems for HuSD/CSD/HeSD		
Contractor:		Notice to Proceed Date:	Completion Date:	Adj. Completion Date:		
Payment Period:	Contract Amount:		Adj. Contract Amount:			
Date Work Started:	% Time Used:		% Job Completed:	Quantity Work:	Progress Work:	
Item No.	Description	Units	Unit Price	Qty. Per Cont.	Completed Amount	Value of Completed Work
Web-Based Central Monitoring System and Training						
1	S2 Enterprise Server Central Monitoring System	LS		1		
2	Training on Systems Operation	HR		40		
Total Progress for Web-Based Central Monitoring and Training \$						<u> </u>
Human Services Department						
3057 Briw Road, Placerville						
Access Control System						
1	S2 NetBox Access Controller	EA		2		
2	Door Package	EA		4		
Intrusion Alarm System						
3	Intrusion Detection Controller	EA		2		
4	Sonitrol Audio Sensor	EA		3		
5	Panic Button System.	LS		1		
CCTV Surveillance & Recording System						
6	Video Surveillance viewing and recording software	LS		1		
7	CCTV Cameras	EA		21		
Total Progress for 3057 Briw Road, Human Services Dept. \$						<u> </u>

County of El Dorado Application for Progress Payment

Project # CIP # 90400		Contract # PW 10-30566		Project Description: Access Control/CCTV/Intrusion Alarm Systems for HuSD/CSD/HeSD		
Contractor:		Notice to Proceed Date:	Completion Date:	Adj. Completion Date:		
Payment Period:	Contract Amount:	Adj. Contract Amount:				
Date Work Started:	% Time Used:	% Job Completed:	Quantity Work:	Progress Work:		
Child Support Services Department						
3057 Briw Road, Placerville						
Access Control System						
1	S2 NetBox Access Controller	EA		1		
2	Door Package	EA		1		
Intrusion Alarm System						
3	Intrusion Detection Controller	EA		1		
4	Dual Technology Motion/IR Detector	EA		3		
5	Panic Button System	LS		1		
CCTV Surveillance & Recording System						
6	Video Surveillance viewing and recording software	LS		1		
7	Existing CCTV Cameras	EA		3		
Total Progress for 3057 Briw Road, Child Support Services Dept. \$ _____						
Human Services Department						
3047 Briw Road, Placerville						
Access Control System						
1	S2 NetBox Access Controller	EA		1		
2	Door Package	EA		7		
Intrusion Alarm System						
3	Intrusion Detection Controller	EA		1		
4	Sonitrol Audio Sensor	EA		3		
5	Panic Button System	LS		1		
CCTV Surveillance & Recording System						
6	Video Surveillance viewing and recording software	LS		1		
7	CCTV Cameras	EA		7		
Total Progress for 3047 Briw Road \$ _____						

County of El Dorado Application for Progress Payment

Project # CIP # 90400		Contract # PW 10-30566		Project Description: Access Control/CCTV/Intrusion Alarm Systems for HuSD/CSD/HeSD		
Contractor:		Notice to Proceed Date:	Completion Date:	Adj. Completion Date:		
Payment Period:	Contract Amount:	Adj. Contract Amount:				
Date Work Started:	% Time Used:	% Job Completed:	Quantity Work:	Progress Work:		

**Human Services Department
937 Spring Street., Placerville**

Item No.	Description	Units	Unit Price	Qty. Per Cont.	Completed Amount	Value of Completed Work
Access Control System						
1	S2 NetBox Access Controller	EA		1		
2	Door Package	EA		9		
Intrusion Alarm System						
3	Intrusion Detection Controller	EA		2		
4	Panic Button System	LS		1		

Total Progress for 937 Spring Street \$ _____

**Health Services Department
670 Placerville Drive, Placerville**

Access Control System						
1	S2 NetBox Access Controller	EA		2		
2	Door Package	EA		28		
Intrusion Alarm System						
3	Intrusion Detection Controller	EA		4		
4	Dual Technology Motion/IR Detector	EA		15		
5	Keypad	EA		4		
6	Panic Button System	LS		1		

Total Progress for 670 Placerville Drive \$ _____

County of El Dorado Application for Progress Payment

Project # CIP # 90400		Contract # PW 10-30566		Project Description: Access Control/CCTV/Intrusion Alarm Systems for HuSD/CSD/HeSD		
Contractor:		Notice to Proceed Date:	Completion Date:	Adj. Completion Date:		
Payment Period:	Contract Amount:	Adj. Contract Amount:				
Date Work Started:	% Time Used:	% Job Completed:	Quantity Work:	Progress Work:		
Health Services Department						
1900 Lake Tahoe Boulevard, South Lake Tahoe						
Access Control System						
1	S2 NetBox Access Controller	EA		1		
2	Door Package	EA		8		
Intrusion Alarm						
3	Intrusion Detection Controller	EA		2		
4	Dual Technology Motion/IR Detector	EA		5		
5	Operating Keypad	EA		2		
6	Panic Button System	LS		1		
CCTV Surveillance & Recording System						
7	Video Surveillance viewing and recording software	LS		1		
8	CCTV Cameras	EA		2		
Total Progress for 1900 Lake Tahoe Boulevard \$				_____		

TOTAL \$ _____

Submitted: _____
Contractor _____ Date _____

Retained (_____ %) \$ _____

Checked: _____
Engineer/Project Manager _____ Date _____

Total Less Retained \$ _____

Approved: _____
Contract Administrator _____ Date _____

Previous Payments \$ _____

Due this Estimate \$ _____