

OWNER'S STATEMENT

THE UNDERSIGNED OWNER OF RECORD TITLE INTEREST, HEREBY CONSENTS TO THE PREPARATION AND FILING OF THIS FINAL MAP, AND HEREBY MAKES AN IRREVOCABLE OFFER OF DEDICATION TO THE COUNTY OF EL DORADO THE ROAD AND PUBLIC UTILITIES EASEMENTS SHOWN HEREON AS LOT "A" (PALMERO CIRCLE).

THE UNDERSIGNED ALSO OFFERS TO THOSE CERTAIN COMPANIES AND PUBLIC ENTITIES WHICH WILL PROVIDE SERVICES, THE EASEMENTS AND RIGHTS OF WAY FOR WATER, SEWER, GAS, SLOPE, LANDSCAPING AND DRAINAGE, INCLUDING PIPES, DITCHES, POLES, GUY WIRES, ANCHORS, OVERHEAD AND UNDERGROUND CONDUITS FOR ELECTRIC AND TELEPHONE SERVICES, WITH THE RIGHT TO TRIM AND REMOVE TREES, TREE LIMBS AND BRUSH TOGETHER WITH ANY AND ALL NECESSITIES APPERTAINING THERETO, OVER UNDER AND ACROSS THE ENTIRE STRIP OF LAND DESIGNATED AS "PUBLIC UTILITIES EASEMENT (PALE)".

EASEMENTS FOR DRAINAGE STRUCTURES, DITCHES AND PIPES TOGETHER WITH ANY AND ALL APPURTENANCES APPERTAINING THERETO, OVER, UNDER AND ACROSS THE COMMON AREAS, LOT "A" AND THOSE STRIPS OF LAND DESIGNATED AS "DRAINAGE EASEMENT (DELA)

ALL OFFERS MADE HEREIN ARE IRREVOCABLE AND SHALL REMAIN OPEN IN PERPETUITY DESPITE A REJECTION OF SUCH OFFER BY THE APPLICABLE PUBLIC ENTITY.

CAMERON PARK SENIOR LIVING, LLC, A CALIFORNIA LIMITED LIABILITY COMPANY

BY: ERIK N. FILEGAARD, MANAGER

NOTARY ACKNOWLEDGEMENT

STATE OF CALIFORNIA)

COUNTY OF) ss.)

ON) BEFORE ME)

PERSONALLY APPEARED)

WHO PROVED TO ME ON THE BASIS OF SATISFACTORY EVIDENCE TO BE THE PERSON(S) WHOSE NAME(S) IS/ARE SUBSCRIBED TO THE WITHIN INSTRUMENT AND ACKNOWLEDGED TO ME THAT HE/SHE/THEY EXECUTED THE SAME IN HIGHEST/OTHER AUTHORIZED PERSON(S) STATUS AND THAT HE/SHE/THEY WERE NOT UNDER ANY UNLAWFUL INFLUENCE AT THE TIME OF THE INSTRUMENT.

I CERTIFY UNDER PENALTY OF PERJURY UNDER THE LAWS OF THE STATE OF CALIFORNIA THAT THE FOREGOING PARAGRAPHS IS TRUE AND CORRECT, WITNESS MY HAND AND OFFICIAL SEAL

SIGNATURE: (SEAL)

PRINT NAME

MY COMMISSION NUMBER IS

MY COMMISSION EXPIRES ON

MY PRINCIPAL PLACE OF BUSINESS IS IN THE COUNTY OF

SURVEYOR'S STATEMENT

THIS MAP WAS PREPARED BY ME OR UNDER MY DIRECTION AND IS BASED UPON A FIELD SURVEY IN CONFORMANCE WITH THE REQUIREMENTS OF THE SUBDIVISION MAP ACT, CHAPTER 2, DIVISION 2, AND THE REGULATIONS THEREUNDER, CALIFORNIA PUBLIC UTILITIES CODE, DIVISION 2, CHAPTER 22822. I HEREBY STATE THAT ALL THE MONUMENTS WILL BE SET IN THOSE POSITIONS BEFORE DECEMBER 15, 2009, AND THAT THE MONUMENTS WILL BE SUFFICIENT TO ENABLE THE SURVEY TO BE RETRACED, AND THAT THIS FINAL MAP SUBSTANTIALLY CONFORMS TO THE CONDITIONALLY APPROVED TENTATIVE MAP.

DATE:

JAMES C. WILLSON L.S. 4663

EXPIRES 9-30-09

TM 05-1402 APPROVED: 10-17-2008

5085-23-06

Cameron Park Congregate Care The Duets

PARCEL 3 OF P.M. 49-III BEING A PORTION OF THE WEST 1/2 OF SECTION 2, T. 9 N., R. 9 E., M.D.M. COUNTY OF EL DORADO STATE OF CALIFORNIA APRIL 2006 SHEET 1 of 5

CARLTON ENGINEERING INC.

COUNTY ENGINEER'S STATEMENT

HEREBY STATE THAT ALL THE REQUIRED CONSTRUCTION PLANS AND SPECIFICATIONS WERE APPROVED AND THAT THE SUBDIVIDER HAS EXECUTED THE NECESSARY AGREEMENT AND SUBMITTED THE REQUIRED SECURITY TO SECURE COMPLETION OF THE REQUIRED IMPROVEMENTS FOR THE SUBDIVISION.

DATE:

COUNTY ENGINEER

DEPARTMENT OF TRANSPORTATION COUNTY OF EL DORADO, CALIFORNIA REGISTRATION EXPIRES

TAX COLLECTOR'S STATEMENT

I, CL. KAFREY, HEREBY STATE THAT ACCORDING TO THE RECORDS OF THIS OFFICE, UNPAID STATE COUNTY, MUNICIPAL OR LOCAL TAXES OR SPECIAL ASSESSMENTS UNPAID AS TAKES EXCEPT TAXES OR SPECIAL ASSESSMENTS NOT YET PAYABLE PROVIDED THAT THE FINAL MAP IS ACCEPTED FOR RECORD AND FILED PRIOR TO THE NEXT SUCCEEDING LIEN DATE.

CL. KAFREY TAX COLLECTOR COUNTY OF EL DORADO STATE OF CALIFORNIA DATED

BY: DEPUTY

EXISTING ASSESSORS PARCEL NUMBER: A PORTION OF 005-356-50

DEVELOPMENT SERVICES DIRECTOR'S STATEMENT

HEREBY STATE THAT THIS FINAL MAP CONFORMS SUBSTANTIALLY TO THE TENTATIVE MAP OF THIS SUBDIVISION APPROVED ON OCTOBER 17, 2008, BY THE BOARD OF SUPERVISORS AND ANY APPROVED ALTERATIONS THEREOF AND THAT ALL CONDITIONS IMPOSED UPON SAID APPROVALS HAVE BEEN SATISFIED.

DATE:

BY:

DEVELOPMENT SERVICES DIRECTOR COUNTY OF EL DORADO, CALIFORNIA PRINCIPAL PLANNER COUNTY OF EL DORADO, CALIFORNIA

BOARD CLERK'S STATEMENT

I, CINDY KECK, HEREBY STATE THAT THE BOARD OF SUPERVISORS BY ORDER ON ADOPTED AND APPROVED THIS FINAL MAP OF THIS SUBDIVISION AND ACCEPT ON BEHALF OF THE BOARD OF SUPERVISORS. THE EASEMENTS SHOWN HEREON AND AS OFFERED FOR DEDICATION AND HEREBY REJECT THE OFFERS OF DEDICATION TO THE COUNTY OF EL DORADO OF THE ROAD EASEMENT, OTHER PUBLIC WAYS AND DRAINAGE EASEMENTS AND FACILITIES SHOWN HEREON.

CINDY KECK DATE

CLERK OF THE BOARD OF SUPERVISORS COUNTY OF EL DORADO, CALIFORNIA

BY:

COUNTY SURVEYOR'S STATEMENT

I HAVE EXAMINED THE MAP, THE SUBDIVISION AS SHOWN IS SUBSTANTIALLY THE SAME AS IT APPEARED ON THE TENTATIVE MAP, IF REQUIRED, AND ANY APPROVED ALTERATIONS THEREON. ALL PROVISIONS OF CHAPTER 2 OF THE SUBDIVISION MAP ACT AND OF ANY LOCAL ORDINANCES APPLICABLE AT THE TIME OF APPROVAL OF THE TENTATIVE MAP, IF REQUIRED, HAVE BEEN COMPLIED WITH. I AM SATISFIED THE MAP IS TECHNICALLY CORRECT.

DATE:

DANIEL S. RUSSELL L.S. 5617 DATE

COUNTY SURVEYOR COUNTY OF EL DORADO STATE OF CALIFORNIA LICENSE EXPIRATION DATE: 12-31-08

BY: RICHARD L. BRUNER L.S. 5684 LICENSE EXPIRATION DATE: 06-30-09 DEPUTY SURVEYOR COUNTY OF EL DORADO STATE OF CALIFORNIA

COUNTY RECORDER'S CERTIFICATE

FILED THIS DAY OF AT IN BOOK OF MAPS, AT PAGE DOCUMENT NO. AT THE REQUEST OF ERIK FILEGAARD TITLE TO THE LAND INCLUDED IN THIS SUBDIVISION IS GUARANTEED BY TITLE CERTIFICATE NO. PREPARED BY PLACER TITLE COMPANY AND IS ON FILE IN THIS OFFICE.

DOCUMENT NO.

WILLIAM E. SCURLEY COUNTY RECORDER CLERK COUNTY OF EL DORADO, CALIFORNIA

BY: DEPUTY

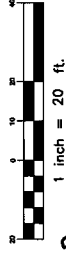
Cameron Park Congregate Care

The Duets

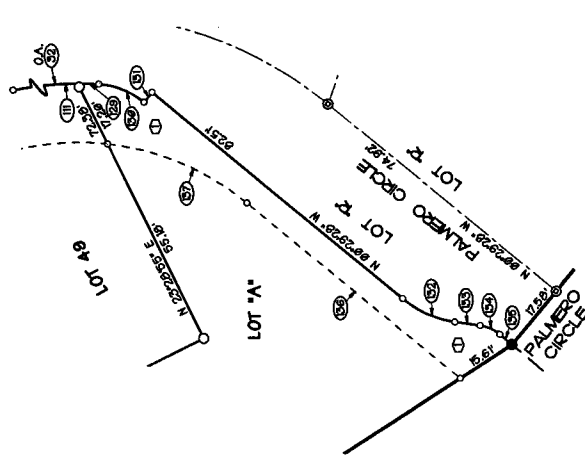
PARCEL 5 OF P.M. 49-111
BEING A PORTION OF THE WEST 1/2 OF
SECTION 2, T. 9 N., R. 9 E., MDM,
COUNTY OF EL DORADO STATE OF CALIFORNIA
APRIL 20/08 SCALE: 1"=20'

SHEET 3 of 5

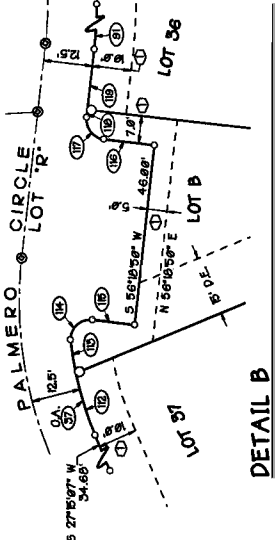
CARLTON ENGINEERING INC.



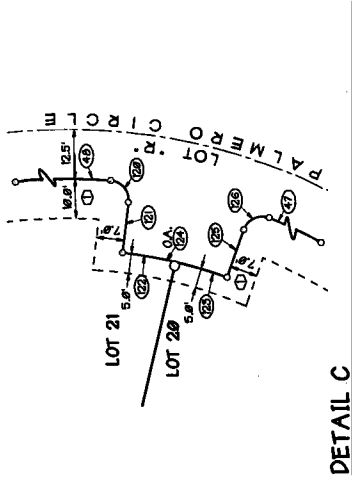
DETAIL D



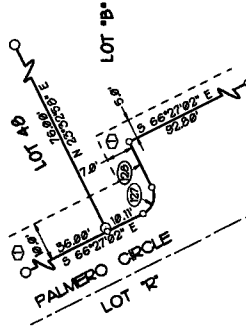
DETAIL A



DETAIL B



DETAIL C



MONUMENTATION NOTES

- 1) ALL FRONT LOT CORNERS HAVE BEEN SET ON LINE F (ONE FOOT) FROM ACTUAL CORNER.
- 2) THE REAR LOT CORNERS FOR LOTS 1-8 HAVE BEEN SET ON LINE W (TEN FEET) FROM THE ACTUAL CORNER.
- 3) THE REAR LOT CORNERS FOR LOTS 9-47 HAVE BEEN SET ON LINE B (SIX FEET) FROM THE ACTUAL CORNER.

NOTE

SEE SHEET 2 FOR GENERAL NOTES, BASIS OF BEARINGS, REFERENCES AND MAP LEGEND.

TABULATION

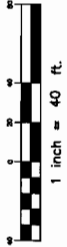
NO.	BEARING & DISTANCE	ARC LENGTH	RADIUS	DELTA	NO.	BEARING & DISTANCE	ARC LENGTH	RADIUS	DELTA
1	S 89°24'00" E 28.00'	28.00'	14.000'	14.000'	70	S 47°24'45" E 17.37'	12.225'	6.1125'	6.1125'
2	S 89°24'00" E 28.00'	28.00'	14.000'	14.000'	71	S 46°05'25" E 36.27'	22.218'	11.109'	11.109'
3	S 89°24'00" E 28.00'	28.00'	14.000'	14.000'	72	S 44°44'00" E 43.66'	21.825'	10.9125'	10.9125'
4	S 89°24'00" E 28.00'	28.00'	14.000'	14.000'	73	S 43°21'00" E 43.71'	22.218'	11.109'	11.109'
5	S 89°24'00" E 28.00'	28.00'	14.000'	14.000'	74	S 41°57'00" E 43.71'	22.218'	11.109'	11.109'
6	S 89°24'00" E 28.00'	28.00'	14.000'	14.000'	75	S 40°32'00" E 43.71'	22.218'	11.109'	11.109'
7	S 89°24'00" E 28.00'	28.00'	14.000'	14.000'	76	S 39°06'00" E 43.71'	22.218'	11.109'	11.109'
8	S 89°24'00" E 28.00'	28.00'	14.000'	14.000'	77	S 37°39'00" E 43.71'	22.218'	11.109'	11.109'
9	S 89°24'00" E 28.00'	28.00'	14.000'	14.000'	78	S 36°12'00" E 43.71'	22.218'	11.109'	11.109'
10	S 89°24'00" E 28.00'	28.00'	14.000'	14.000'	79	S 34°45'00" E 43.71'	22.218'	11.109'	11.109'
11	S 89°24'00" E 28.00'	28.00'	14.000'	14.000'	80	S 33°18'00" E 43.71'	22.218'	11.109'	11.109'
12	S 89°24'00" E 28.00'	28.00'	14.000'	14.000'	81	S 31°51'00" E 43.71'	22.218'	11.109'	11.109'
13	S 89°24'00" E 28.00'	28.00'	14.000'	14.000'	82	S 30°24'00" E 43.71'	22.218'	11.109'	11.109'
14	S 89°24'00" E 28.00'	28.00'	14.000'	14.000'	83	S 28°57'00" E 43.71'	22.218'	11.109'	11.109'
15	S 89°24'00" E 28.00'	28.00'	14.000'	14.000'	84	S 27°30'00" E 43.71'	22.218'	11.109'	11.109'
16	S 89°24'00" E 28.00'	28.00'	14.000'	14.000'	85	S 26°03'00" E 43.71'	22.218'	11.109'	11.109'
17	S 89°24'00" E 28.00'	28.00'	14.000'	14.000'	86	S 24°36'00" E 43.71'	22.218'	11.109'	11.109'
18	S 89°24'00" E 28.00'	28.00'	14.000'	14.000'	87	S 23°09'00" E 43.71'	22.218'	11.109'	11.109'
19	S 89°24'00" E 28.00'	28.00'	14.000'	14.000'	88	S 21°42'00" E 43.71'	22.218'	11.109'	11.109'
20	S 89°24'00" E 28.00'	28.00'	14.000'	14.000'	89	S 20°15'00" E 43.71'	22.218'	11.109'	11.109'
21	S 89°24'00" E 28.00'	28.00'	14.000'	14.000'	90	S 18°48'00" E 43.71'	22.218'	11.109'	11.109'
22	S 89°24'00" E 28.00'	28.00'	14.000'	14.000'	91	S 17°21'00" E 43.71'	22.218'	11.109'	11.109'
23	S 89°24'00" E 28.00'	28.00'	14.000'	14.000'	92	S 15°54'00" E 43.71'	22.218'	11.109'	11.109'
24	S 89°24'00" E 28.00'	28.00'	14.000'	14.000'	93	S 14°27'00" E 43.71'	22.218'	11.109'	11.109'
25	S 89°24'00" E 28.00'	28.00'	14.000'	14.000'	94	S 13°00'00" E 43.71'	22.218'	11.109'	11.109'
26	S 89°24'00" E 28.00'	28.00'	14.000'	14.000'	95	S 11°33'00" E 43.71'	22.218'	11.109'	11.109'
27	S 89°24'00" E 28.00'	28.00'	14.000'	14.000'	96	S 10°06'00" E 43.71'	22.218'	11.109'	11.109'
28	S 89°24'00" E 28.00'	28.00'	14.000'	14.000'	97	S 8°39'00" E 43.71'	22.218'	11.109'	11.109'
29	S 89°24'00" E 28.00'	28.00'	14.000'	14.000'	98	S 7°12'00" E 43.71'	22.218'	11.109'	11.109'
30	S 89°24'00" E 28.00'	28.00'	14.000'	14.000'	99	S 5°45'00" E 43.71'	22.218'	11.109'	11.109'
31	S 89°24'00" E 28.00'	28.00'	14.000'	14.000'	100	S 4°18'00" E 43.71'	22.218'	11.109'	11.109'
32	S 89°24'00" E 28.00'	28.00'	14.000'	14.000'	101	S 2°51'00" E 43.71'	22.218'	11.109'	11.109'
33	S 89°24'00" E 28.00'	28.00'	14.000'	14.000'	102	S 1°24'00" E 43.71'	22.218'	11.109'	11.109'
34	S 89°24'00" E 28.00'	28.00'	14.000'	14.000'	103	S 0°00'00" E 43.71'	22.218'	11.109'	11.109'
35	S 89°24'00" E 28.00'	28.00'	14.000'	14.000'	104	S 0°00'00" E 43.71'	22.218'	11.109'	11.109'
36	S 89°24'00" E 28.00'	28.00'	14.000'	14.000'	105	S 0°00'00" E 43.71'	22.218'	11.109'	11.109'
37	S 89°24'00" E 28.00'	28.00'	14.000'	14.000'	106	S 0°00'00" E 43.71'	22.218'	11.109'	11.109'
38	S 89°24'00" E 28.00'	28.00'	14.000'	14.000'	107	S 0°00'00" E 43.71'	22.218'	11.109'	11.109'
39	S 89°24'00" E 28.00'	28.00'	14.000'	14.000'	108	S 0°00'00" E 43.71'	22.218'	11.109'	11.109'
40	S 89°24'00" E 28.00'	28.00'	14.000'	14.000'	109	S 0°00'00" E 43.71'	22.218'	11.109'	11.109'
41	S 89°24'00" E 28.00'	28.00'	14.000'	14.000'	110	S 0°00'00" E 43.71'	22.218'	11.109'	11.109'
42	S 89°24'00" E 28.00'	28.00'	14.000'	14.000'	111	S 0°00'00" E 43.71'	22.218'	11.109'	11.109'
43	S 89°24'00" E 28.00'	28.00'	14.000'	14.000'	112	S 0°00'00" E 43.71'	22.218'	11.109'	11.109'
44	S 89°24'00" E 28.00'	28.00'	14.000'	14.000'	113	S 0°00'00" E 43.71'	22.218'	11.109'	11.109'
45	S 89°24'00" E 28.00'	28.00'	14.000'	14.000'	114	S 0°00'00" E 43.71'	22.218'	11.109'	11.109'
46	S 89°24'00" E 28.00'	28.00'	14.000'	14.000'	115	S 0°00'00" E 43.71'	22.218'	11.109'	11.109'
47	S 89°24'00" E 28.00'	28.00'	14.000'	14.000'	116	S 0°00'00" E 43.71'	22.218'	11.109'	11.109'
48	S 89°24'00" E 28.00'	28.00'	14.000'	14.000'	117	S 0°00'00" E 43.71'	22.218'	11.109'	11.109'
49	S 89°24'00" E 28.00'	28.00'	14.000'	14.000'	118	S 0°00'00" E 43.71'	22.218'	11.109'	11.109'
50	S 89°24'00" E 28.00'	28.00'	14.000'	14.000'	119	S 0°00'00" E 43.71'	22.218'	11.109'	11.109'
51	S 89°24'00" E 28.00'	28.00'	14.000'	14.000'	120	S 0°00'00" E 43.71'	22.218'	11.109'	11.109'
52	S 89°24'00" E 28.00'	28.00'	14.000'	14.000'	121	S 0°00'00" E 43.71'	22.218'	11.109'	11.109'
53	S 89°24'00" E 28.00'	28.00'	14.000'	14.000'	122	S 0°00'00" E 43.71'	22.218'	11.109'	11.109'
54	S 89°24'00" E 28.00'	28.00'	14.000'	14.000'	123	S 0°00'00" E 43.71'	22.218'	11.109'	11.109'
55	S 89°24'00" E 28.00'	28.00'	14.000'	14.000'	124	S 0°00'00" E 43.71'	22.218'	11.109'	11.109'
56	S 89°24'00" E 28.00'	28.00'	14.000'	14.000'	125	S 0°00'00" E 43.71'	22.218'	11.109'	11.109'
57	S 89°24'00" E 28.00'	28.00'	14.000'	14.000'	126	S 0°00'00" E 43.71'	22.218'	11.109'	11.109'
58	S 89°24'00" E 28.00'	28.00'	14.000'	14.000'	127	S 0°00'00" E 43.71'	22.218'	11.109'	11.109'
59	S 89°24'00" E 28.00'	28.00'	14.000'	14.000'	128	S 0°00'00" E 43.71'	22.218'	11.109'	11.109'
60	S 89°24'00" E 28.00'	28.00'	14.000'	14.000'	129	S 0°00'00" E 43.71'	22.218'	11.109'	11.109'
61	S 89°24'00" E 28.00'	28.00'	14.000'	14.000'	130	S 0°00'00" E 43.71'	22.218'	11.109'	11.109'
62	S 89°24'00" E 28.00'	28.00'	14.000'	14.000'	131	S 0°00'00" E 43.71'	22.218'	11.109'	11.109'
63	S 89°24'00" E 28.00'	28.00'	14.000'	14.000'	132	S 0°00'00" E 43.71'	22.218'	11.109'	11.109'
64	S 89°24'00" E 28.00'	28.00'	14.000'	14.000'	133	S 0°00'00" E 43.71'	22.218'	11.109'	11.109'
65	S 89°24'00" E 28.00'	28.00'	14.000'	14.000'	134	S 0°00'00" E 43.71'	22.218'	11.109'	11.109'
66	S 89°24'00" E 28.00'	28.00'	14.000'	14.000'	135	S 0°00'00" E 43.71'	22.218'	11.109'	11.109'
67	S 89°24'00" E 28.00'	28.00'	14.000'	14.000'	136	S 0°00'00" E 43.71'	22.218'	11.109'	11.109'
68	S 89°24'00" E 28.00'	28.00'	14.000'	14.000'	137	S 0°00'00" E 43.71'	22.218'	11.109'	11.109'
69	S 89°24'00" E 28.00'	28.00'	14.000'	14.000'	138	S 0°00'00" E 43.71'	22.218'	11.109'	11.109'
70	S 89°24'00" E 28.00'	28.00'	14.000'	14.000'	139	S 0°00'00" E 43.71'	22.218'	11.109'	11.109'
71	S 89°24'00" E 28.00'	28.00'	14.000'	14.000'	140	S 0°00'00" E 43.71'	22.218'	11.109'	11.109'
72	S 89°24'00" E 28.00'	28.00'	14.000'	14.000'	141	S 0°00'00" E 43.71'	22.218'	11.109'	11.109'
73	S 89°24'00" E 28.00'	28.00'	14.000'	14.000'	142	S 0°00'00" E 43.71'	22.218'	11.109'	11.109'
74	S 89°24'00" E 28.00'	28.00'	14.000'	14.000'	143	S 0°00'00" E 43.71'	22.218'	11.109'	11.109'
75	S 89°24'00" E 28.00'	28.00'	14.000'	14.000'	144	S 0°00'00" E 43.71'	22.218'	11.109'	11.109'
76	S 89°24'00" E 28.00'	28.00'	14.000'	14.000'	145	S 0°00'00" E 43.71'	22.218'	11.109'	11.109'
77	S 89°24'00" E 28.00'	28.00'	14.000'	14.000'	146	S 0°00'00" E 43.71'	22.218'	11.109'	11.109'
78	S 89°24'00" E 28.00'	28.00'	14.000'	14.000'	147	S 0°00'00" E 43.71'	22.218'	11.109'	11.109'
79	S 89°24'00" E 28.00'	28.00'	14.000'	14.000'	148	S 0°00'00" E 43.71'	22.218'	11.109'	11.109'
80	S 89°24'00" E 28.00'	28.00'	14.000'	14.000'	149	S 0°00'00" E 43.71'	22.218'	11.109'	11.109'
81	S 89°24'00" E 28.00'	28.00'	14.000'	14.000'	150	S 0°00'00" E 43.71'	22.218'	11.109'	11.109'
82	S 89°24'00" E 28.00'	28.00'	14.000'	14.000'	151	S 0°00'00" E 43.71'	22.21		

Cameron Park Congregate Care The Duets

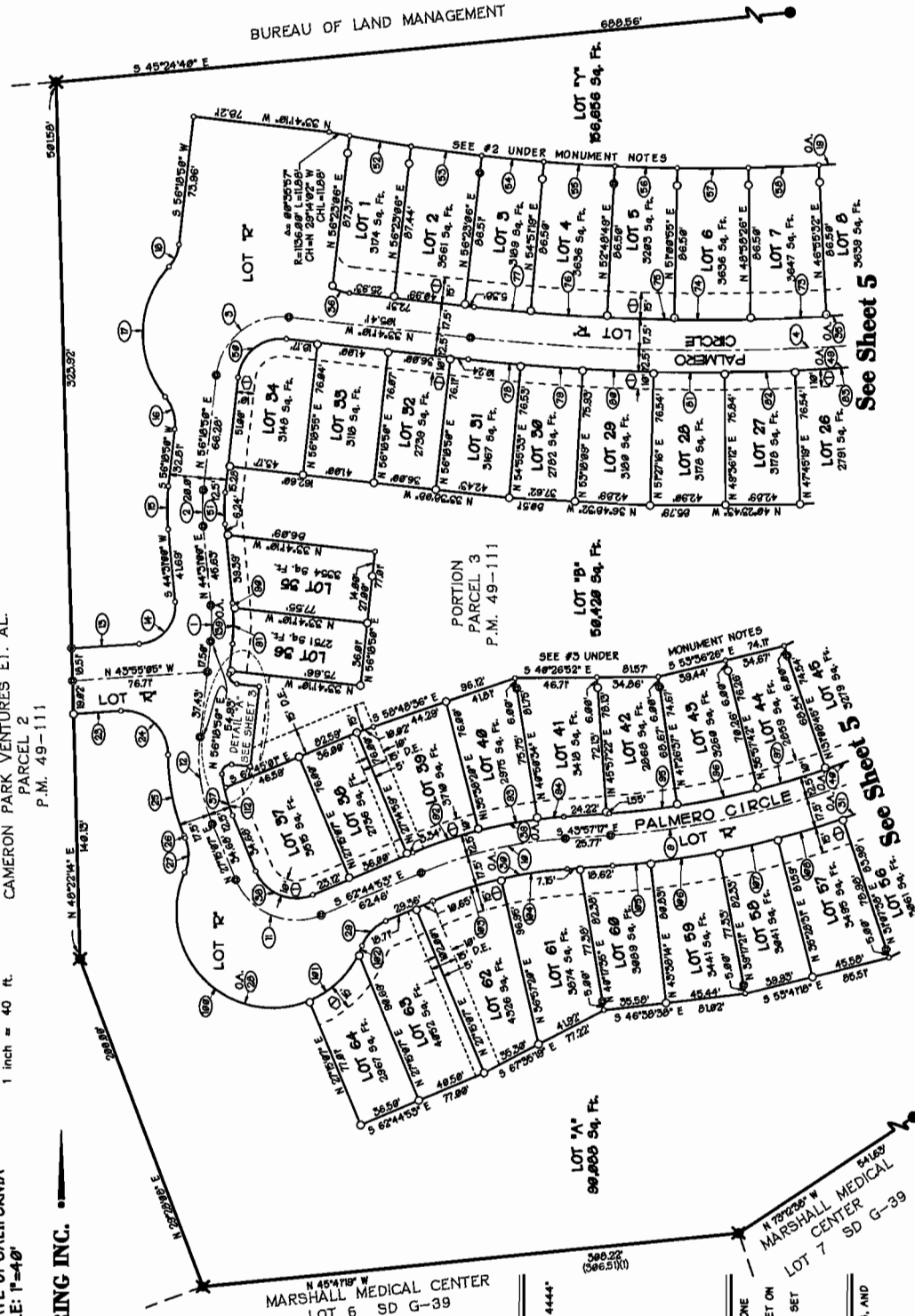
PARCEL 3 OF P.M. 49-111
BEING A PORTION OF THE WEST 1/2 OF
SECTION 2, T. 9 N., R. 9 E., M.D.M.
COUNTY OF EL DORADO STATE OF CALIFORNIA
APRIL 2008 SCALE: 1"=40'
SHEET 4 of 5

CARLTON ENGINEERING INC.

CAMERON PARK VENTURES ET. AL.
PARCEL 2
P.M. 49-111



BUREAU OF LAND MANAGEMENT



LEGEND

- DIMENSION POINT, NOTHING FOUND OR SET
- FOUND 1 1/2" CAPPED IRON PIPE (CLIP) STAMPED "L.S. 4444"
- FOUND 3/4" CLIP, STAMPED "L.S. 4663 2866"
- FOUND 1/2" CLIP, STAMPED "L.S. 4663 2866"
- SET 3/4" CIP STAMPED "L.S. 4663"
- SET 1 1/2" CIP STAMPED "L.S. 4663"
- SET NAIL AND WASHER STAMPED "L.S. 4663"
- PUBLIC UTILITIES EASEMENT (P.U.E.) & BUILDING SET BACK LINE (SBL) WIDTH AS NOTED
- D.L. DRAINAGE EASEMENT
- (1) RECORD DATA PER REFERENCES LISTED

MONUMENTATION NOTES

- 1) ALL FRONT LOT CORNERS HAVE BEEN SET ON LINE 1 (ONE FOOT) FROM ACTUAL CORNER.
- 2) THE REAR LOT CORNERS FOR LOTS 1-10 HAVE BEEN SET ON LINE 10 (TEN FEET) FROM THE ACTUAL CORNER.
- 3) THE REAR LOT CORNERS FOR LOTS 11-47 HAVE BEEN SET ON LINE 6 (SIX FEET) FROM THE ACTUAL CORNER.

NOTE

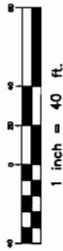
SEE SHEET 2 FOR GENERAL NOTES, BASIS OF BEARINGS, AND REFERENCES.

Cameron Park Congregate Care

The Duets

PARCEL 3 OF P.M. 49-111
 BEING A PORTION OF THE WEST 1/2 OF
 SECTION 2, T. 9 N., R. 9 E., M.D.M.
 COUNTY OF EL DORADO STATE OF CALIFORNIA
 APRIL 2008 SCALE: 1"=40'
 SHEET 5 of 5

CARLTON ENGINEERING INC.



LEGEND

- DIMENSION POINT, NOTHING FOUND OR SET
- FOUND 1 1/2" CAPPED IRON PIPE (CLIP) STAMPED "L.S. 4444"
- FOUND 3/4" CLIP, STAMPED "L.S. 4663 2896"
- FOUND 1 1/2" CLIP, STAMPED "L.S. 4663 2896"
- SET 3/4" CIP STAMPED "L.S. 4663"
- SET 1 1/2" CIP STAMPED "L.S. 4663"
- SET NAIL AND WASHER STAMPED "L.S. 4663"
- PUBLIC UTILITIES EASEMENT (P.U.E.) & BUILDING SET BACK LINE (SBL) WIDTH AS NOTED
- DRAINAGE EASEMENT
- RECORD DATA PER REFERENCES LISTED

MONUMENTATION NOTES

- 1) ALL FRONT LOT CORNERS HAVE BEEN SET ON LINE 1 (ONE FOOT) FROM ACTUAL CORNER.
- 2) THE REAR LOT CORNERS FOR LOTS 1-18 HAVE BEEN SET ON LINE 10' (TEN FEET) FROM THE ACTUAL CORNER.
- 3) THE REAR LOT CORNERS FOR LOTS 49-47 HAVE BEEN SET ON LINE 6' (SIX FEET) FROM THE ACTUAL CORNER.

NOTE

SEE SHEET 2 FOR GENERAL NOTES, BASIS OF BEARINGS, AND REFERENCES.

