



Year of the Child

**Board of Supervisors (2010)
El Dorado County Probation Department
Gregory S. Sly, Chief Probation Officer**

Probation Department Juvenile Services

- Juvenile Referral / Intake Services
- Juvenile Court Services
- Juvenile Supervision Services
- Juvenile Detention Facilities
- Treatment Services



Juvenile Referrals / Intake

- All law enforcement referrals/arrests for juvenile offenders are first referred to the Probation Department
- Probation received 2,299 Juvenile delinquency referrals in 2009
 - 287 Felony referrals
 - 1407 Misdemeanor referrals
 - 605 Status offense referrals

Mandates under: §626(d) W&I; §628(a) W&I; §652 W&I; §652.5 W&I

Diversion Programs



- Informal Supervision
- Teen Court
- Juvenile Court Work Program
- Deferred Entry of Judgment

Mandates under: §626(b) W&I; §654 W&I; §725 W&I; §727 W&I; §729 W&I, §790 W&I

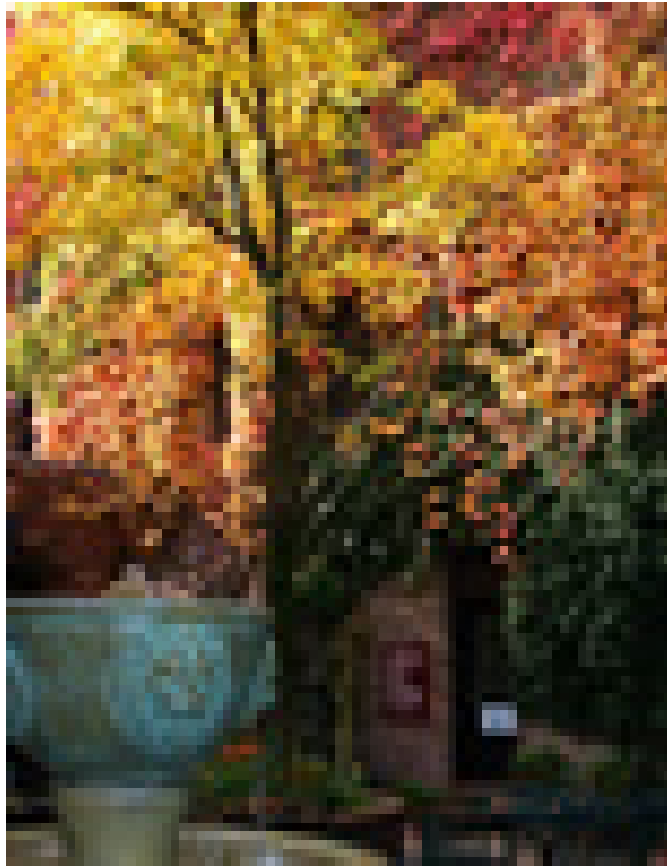
Juvenile Court Services

- Referrals to District Attorney for filing petitions
- Court Hearing attendance/participation
- Investigations, Reports, & Juvenile Court Recommendations
- Court transportation of detainees



Mandates under: §241.1 W&I; §280 W&I; §281 W&I; §604 W&I; §625-§656 W&I; §702 W&I; §706.6 W&I; §707 W&I

Juvenile Supervision in the Community



- Caseload Supervision
- Probation Condition Enforcement
- Victim Restitution Collection
- Treatment Referrals
- Drug Testing / Search and Seizure
- Juvenile Electronic Monitoring
- Placement Services

Mandates under: §628 W&I; §725 W&I; §727 W&I; §729 W&I; §840 W&I; DSS Regulations Division 31

Community Alliance to Reduce Truancy (CART)

- Education / Probation Collaboration
- High School assigned Probation Officers
- Outside Funding
 - Juvenile Crime Prevention Act / VLF
- Juvenile Justice Coordinating Council Oversight



Mandates under: §727 W&I; §729.2(a) W&I; §1202.8(a) PC

Juvenile Detention Facilities



- Juvenile Hall, Placerville
- Juvenile Treatment Center, South Lake Tahoe
- Challenge Program
- Juvenile Service Council / JTC CARES

Mandates under: §730 W&I; §850 W&I; Title 15 California Code of Regulations

Challenge Program

- Established in July, 2005 (Juvenile Treatment Center)
- Six Month Ranch Commitment
- Accountability, Treatment, and Education
- Education Project
- Significant Cost Savings
 - Avoids out of County Ranch Camp placements



The Challenge program had 22 juvenile participants for the year 2009 with an overall success rate of over 86%.

Treatment Programs



- Substance Abuse Turnaround Education Program (STEP)
- Family Reunification Program (FRP)
- Good Time / School Time Program (PERCS)
- Transition and Aftercare Program (TAP)

Mandates under: §727 W&I; §729.2(b) thru §730 W&I; Title 15 California Code of Regulations

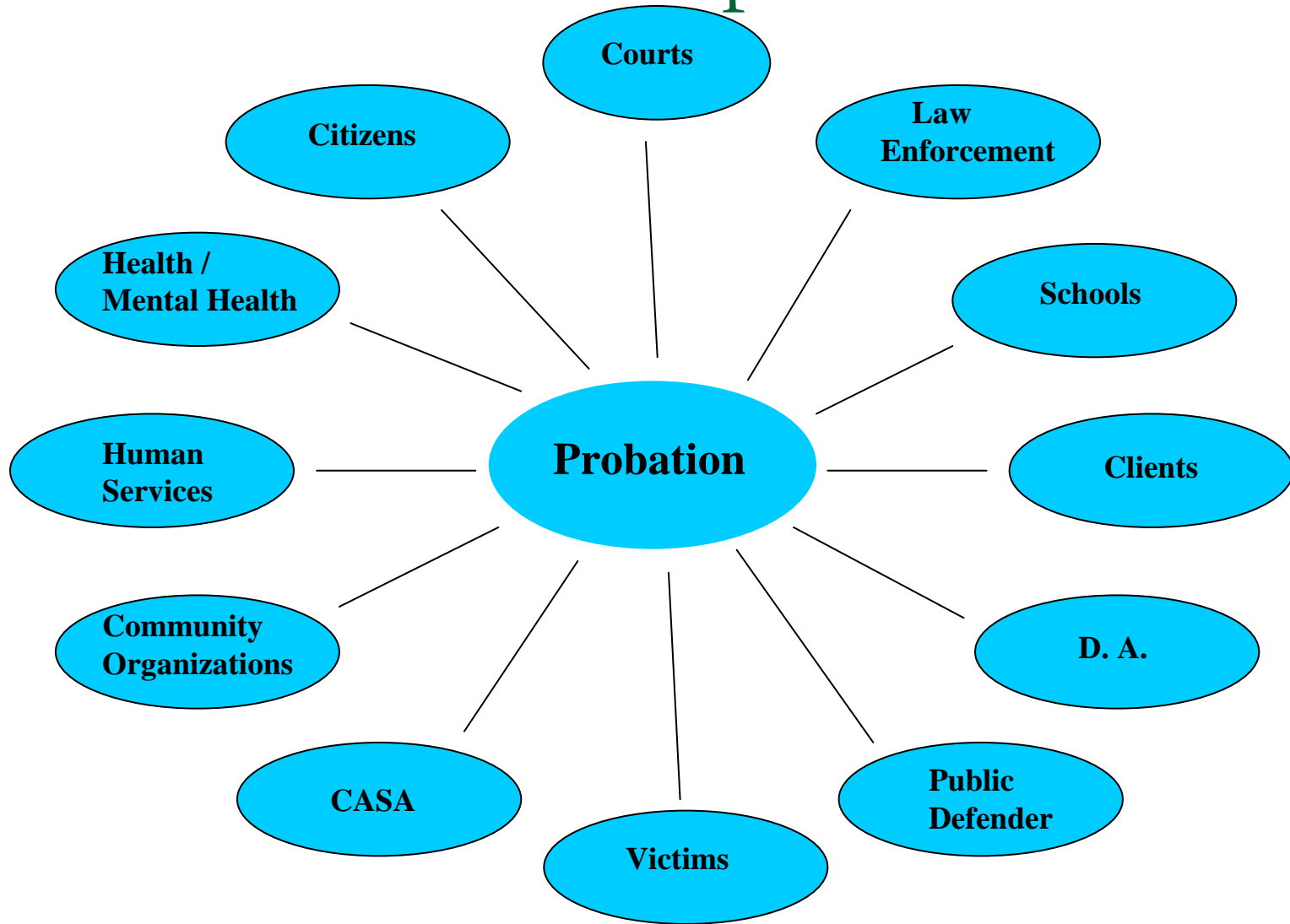
Treatment Services

- Individual, Group and Family Counseling
- Anger Management
- Substance Abuse Prevention
- Domestic Violence and Sexual Abuse
- Lifeskills



Mandates under: §727 thru §730 W&I; Title 15 California Code of Regulations

Probation Partnerships



Questions?



■ Thank you