



Recycling in a State of Transition

El Dorado County Board of Supervisors
November 19, 2019

Dickson Schwarzbach, EDSWAC Chair

Shirley Woods, EDSWAC Member

Sarah Vaira, El Dorado Disposal Sustainability
Coordinator, EDSWAC Member

What's the
Background?

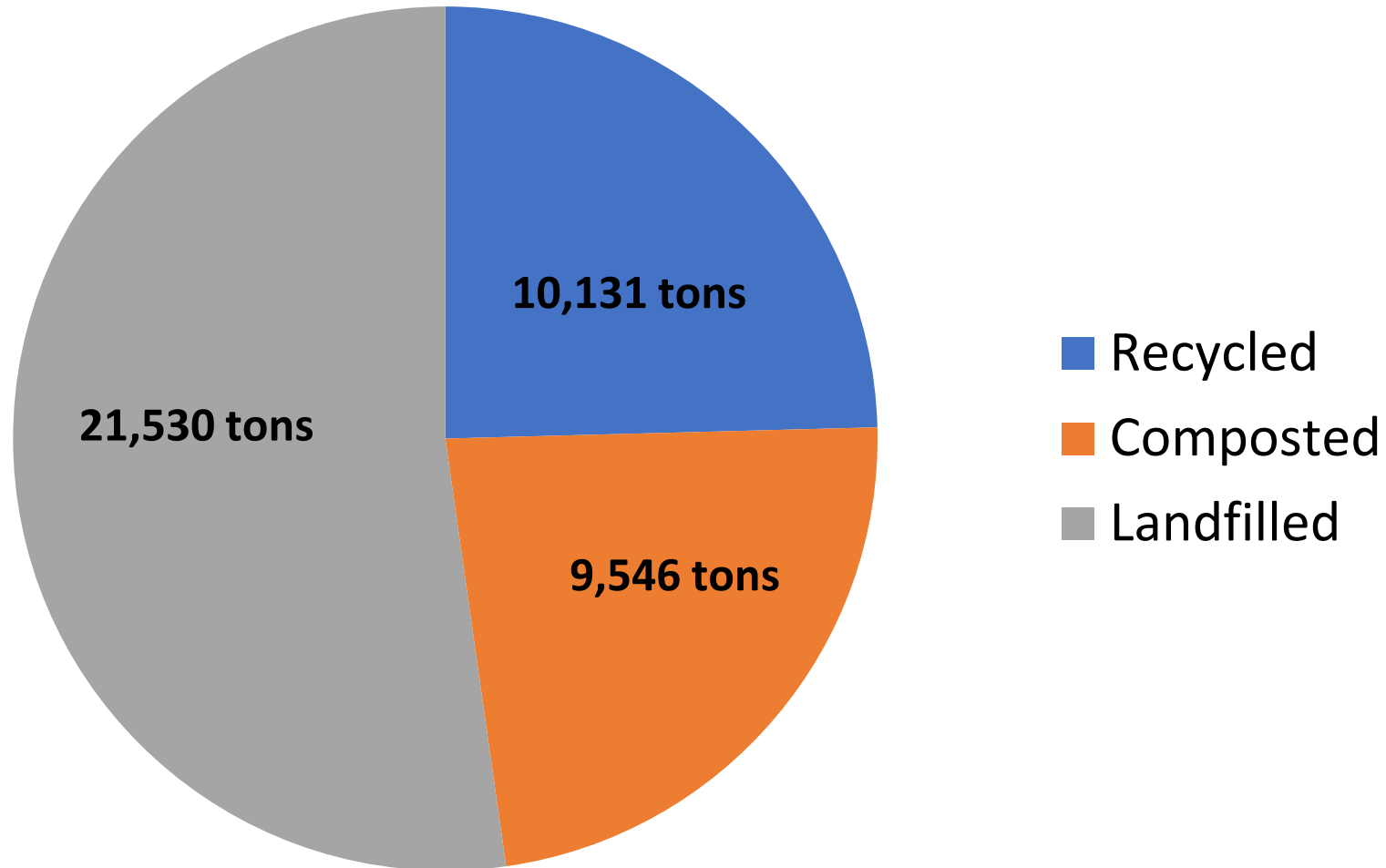


Background

1. In 1989, AB 939 required each California jurisdiction to divert 50% of its waste away from landfills through recycling or waste diversion.
2. Each county was to form a task force and develop a solid waste management plan.
3. AB 341 set a state diversion target of 75% by 2020. **El Dorado County also has a 75% diversion goal.**
4. SB 1383 set a target of reducing organic waste (food, green waste, and other organic materials) by 50% by 2020, and 75% by 2025.

Where are Materials in El Dorado County Going?

El Dorado County Disposal 2018 in Tons (West Slope)



In EDC, we have a MRF/transfer station.

We ship out our garbage, recycling, green waste, etc.



Landfill – Garbage is driven to **Potrero Hills Landfill**



Transfer Station
Recycling, Garbage, and Yard waste material arrives at **El Dorado Disposal**



Material Recovery Facility Recycling is sorted at **Cal Waste**



Wind Row Composting – Yard waste is driven for composting at **Lopez Agriculture**
19-1640 A 5 of 38

What Can We Recycle in EDC?

This can be **confusing** ...

Glass Container



Clean Can



Metal Can with Plastic Top



Paper Carton with Plastic Liner



Plastic Wrapper



Plastic Strawberry Container



Plastic Shampoo Bottle



Battery



Cardboard with Plastic



Confusing

The recycling symbol doesn't mean that a material can be recycled.





Confusing

Products made
with recycled
materials often
aren't
recyclable

Confusing

A “plant bottle”
with resin made
from sugar and
molasses is still a
plastic bottle



Other Materials Recovered at the MRF

- Construction and demolition
- Hazardous Materials (paint, batteries)
- Mattresses
- Carpet
- E-Waste
- Appliances



RESIDENTIAL SERVICE GUIDE



Download our App!



RECYCLING

Empty and clean all recyclables. Place loose material into your yellow-lid recycle cart. Do not bag your materials.

Paper & Cardboard



Clean and dry
NO greasy pizza boxes

Glass Jars & Bottles



Plastic Bottles, Tube & Jugs



Ignore the numbers
recycle by shape!

Aluminum & Tin Cans



YARDWASTE



please place loose or use a compostable paper bag

GARBAGE



HOUSEHOLD HAZARDOUS

HHW does not belong in any of the curbside collection carts and can be disposed of at 4100 Throwla Way, Placerville.



Information on what is recyclable is available

– but the public needs to be informed

The Environment for Recycling has Changed

This has caused confusion

China Doesn't Want Our Solid Waste Problem

Until recently, most of our recyclables were shipped 6,500 miles from Galt to China.

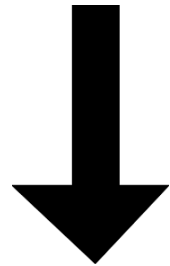
China was the primary market for recyclables from across the globe.

Our “recycling” was too contaminated.

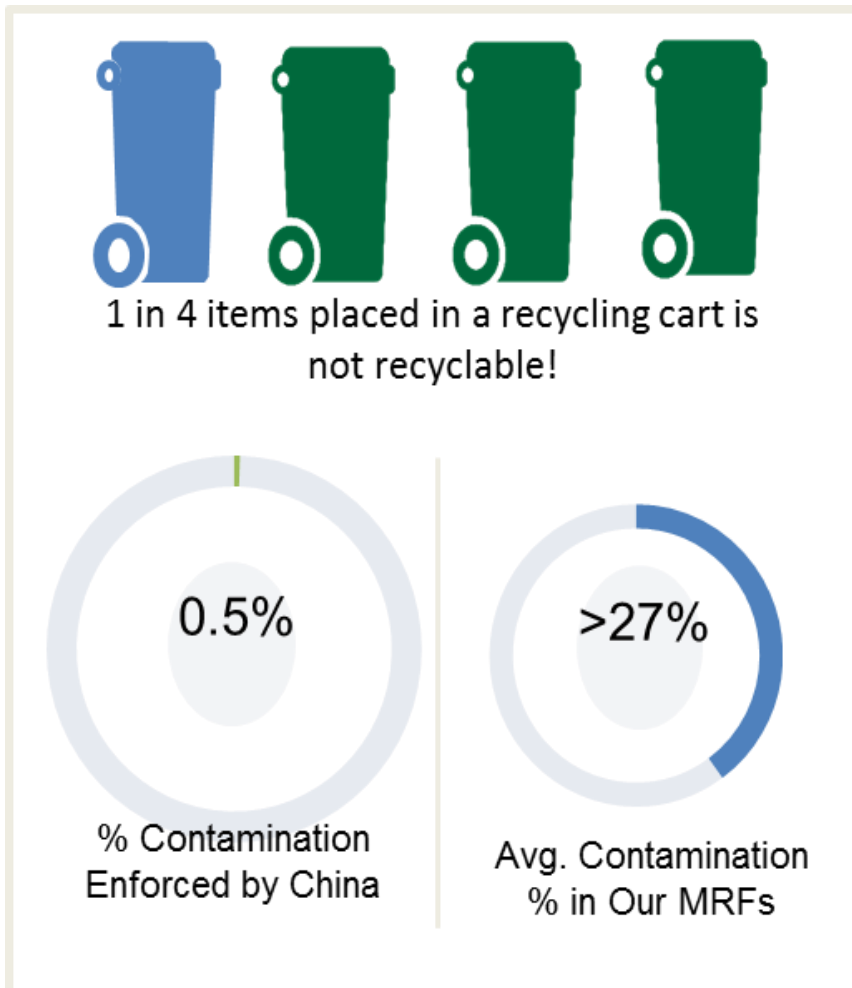


China Will Only Accept Recycling with a .5% or Less Contamination Rate

Every ton of material we receive includes about **540 lbs.** of contaminates



Chinese buyers expect less than **10 lbs.**



Recycling is More than Collecting Material



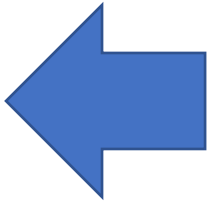
1. Collect it



2. Sort it



3. Sell it



4. Make something of use

Our Current System of Using Resources Won't Work Long Term

Materials do not Break Down in a Landfill

- These carrots were put in the trash 10 years ago.
- Landfills are a short term plan for a long term problem.



An area the size of the state of Pennsylvania is used for landfilling trash.



Plastics: In the Pacific Ocean, there is a mass of plastic that is equivalent to twice the size of Texas.

It is estimated that only 9% of the plastic we produce is recycled.

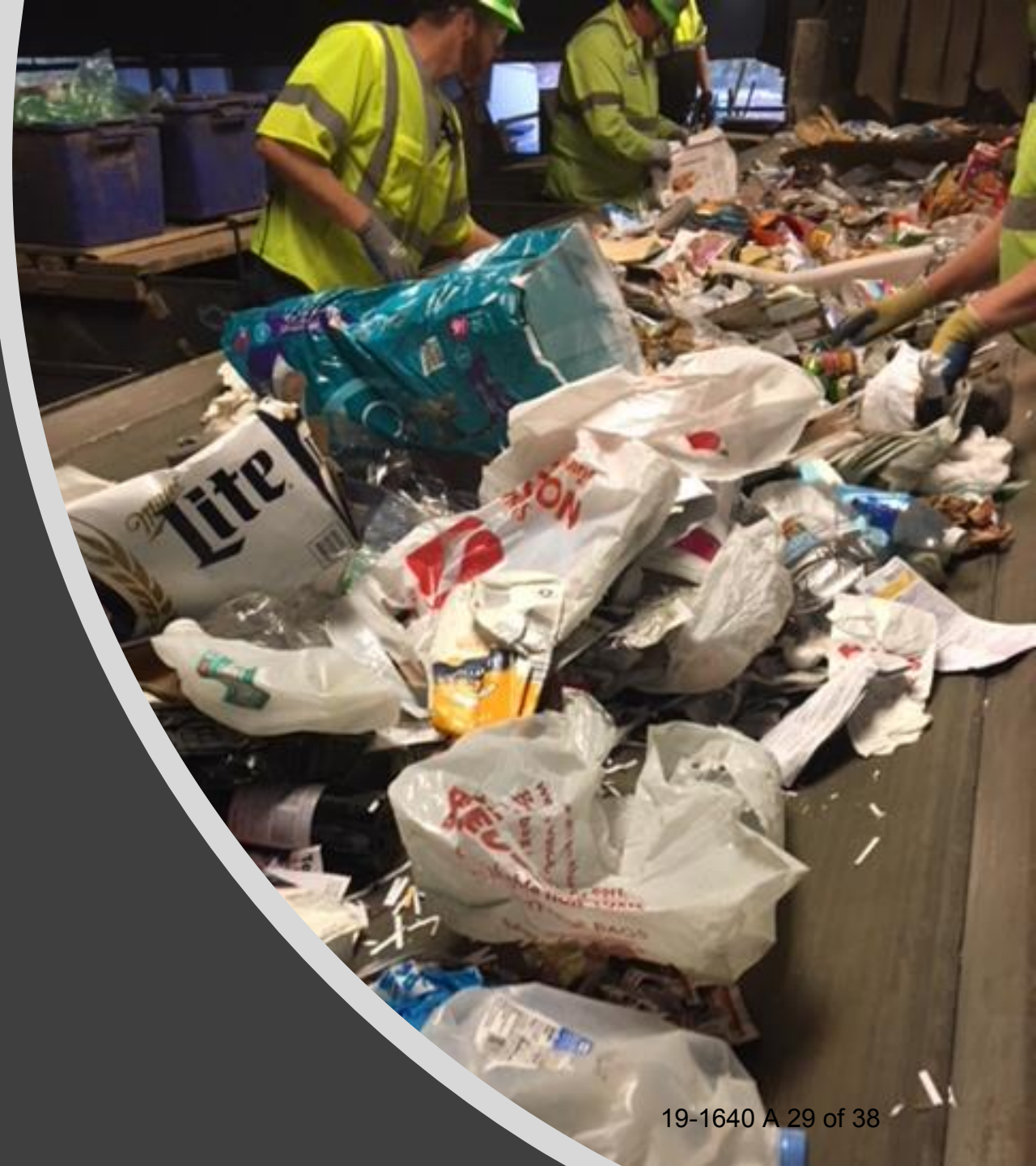
We produce 20Xs more plastic that we did 50 years ago.

Small bits of plastic are getting into the fish that we eat. This is toxic.



Single Use Plastic Bags are a Problem

- Plastic bags are used for an average of [12 minutes](#).
- It takes [500 \(or more\) years](#) for a plastic bag to degrade in a landfill. Unfortunately the bags don't break down completely but instead photodegrade, becoming microplastics that absorb toxins and continue to pollute the environment.
- [Many plastics get into the ocean, 100,000 marine animals](#) are killed by plastic bags annually.




We need to shift from a linear model of using resources to a cyclical model

The Future is Circular

Movements to “close to the loop”

- **Extended Producer Responsibility**
 - SB 212 – Pharmaceutical and sharps waste stewardship
- **Single Use Reduction**
 - Prop 67 – Single-use plastic and paper bags
 - AB 1884 – Single-use plastic straws
- **Post Consumer Content Standards**
 - AB 792 – Recycled content standards
- **Infrastructure**
 - Recycling Market Development Zones (RMDZ)



SB 54 and AB 1080 The California Circular Economy and Plastic Pollution Reduction Act

Returning next session

We Need Better Recycling to ...

- Reuse finite natural resources
- Decrease energy use and land impacts from extracting more resources
- Reduce the area needed for landfill
- Reduce carbon emission
 - Every 10lbs of aluminum recycled eliminates 37 lbs. of carbon emissions
- Create jobs
 - Roughly 1.5 jobs are created for every 1,000 tons of material recycled



Waste is an Antiquated Concept

We live in a closed system.

Turning finite natural resources into waste and then using limited land to store waste doesn't make sense in the long term.

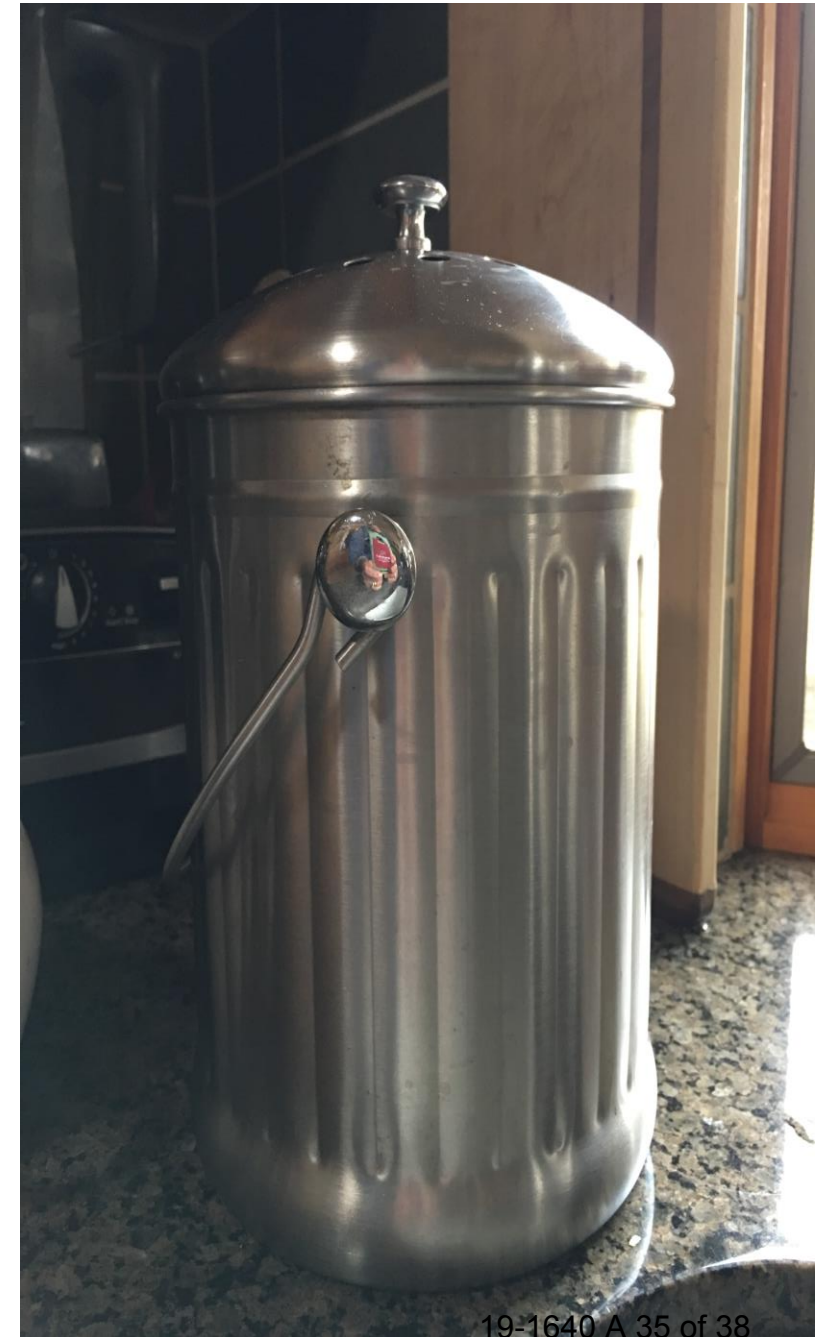
What makes sense is to reduce waste, reuse more materials, and recover materials through buying recycled products.



What Can We Do in the Short Term to Make Improvements?

Composting

- 40% of food is wasted.
- By composting we can reuse the nutrients.
- In time, there will be food waste pick-ups for homes.



Communicate to the Public



We still need to recycle.



We have a 75% diversion goal.



We need to be more informed about what can be recycled or reused. There is information on the El Dorado Disposal and Environmental Management websites.



With El Dorado Disposal's new facility we can recycle more construction and demolition debris

How can the Board of Supervisors support the transition to better solid waste management?

Advocate for proposed state legislation that would create more capacity for organics processing, develop local markets for recycled materials, extend producer responsibility for creating products for reuse and reduce single use plastics.

Encourage businesses to implement sound practices. The BOS recently approved a business recognition program.

Seek opportunities to make recycling visible and accessible in more public spaces.

Questions?

Thank you!

Dickson Schwarzbach, Shirley Woods, Sarah Vaira