
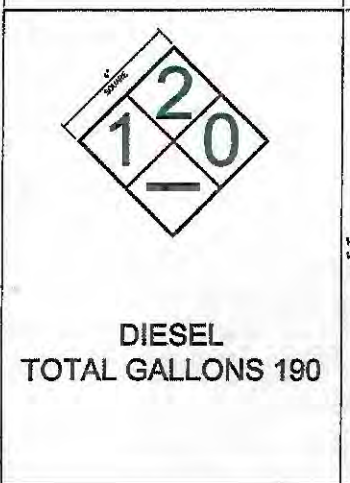
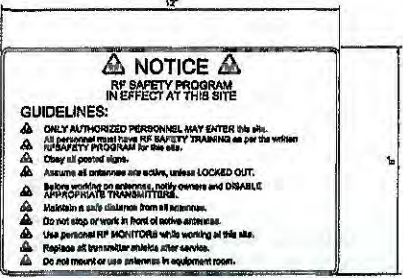
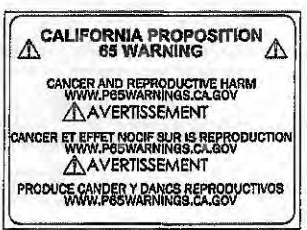



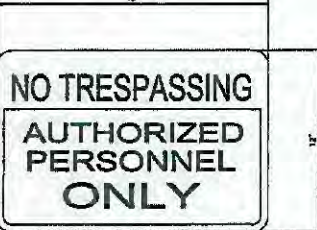


**CUP-R21-0049 AT&T VERIZON COLOCATION CELL TOWER REVISION
EXHIBIT F - SITE PLANS**

<div style="display: flex; justify-content: space-around;"> <div style="text-align: center;">  <p>REQUIRED BATTERY NFPA SIGNAGE</p> </div> <div style="text-align: center;">  <p>DIESEL TOTAL GALLONS 190</p> <p>NFPA SIGNAGE</p> </div> </div>	<div style="text-align: center;">  <p>RF SAFETY PROGRAM IN EFFECT AT THIS SITE</p> <p>GUIDELINES:</p> <ul style="list-style-type: none"> ▲ ONLY AUTHORIZED PERSONNEL MAY ENTER this site. ▲ All personnel must have RF SAFETY TRAINING as per the written RF SAFETY PROGRAM for this site. ▲ Obey all posted signs. ▲ Assume all antennas are active, unless LOCKED OUT. ▲ Before working on antennas, notify owners and DISABLE APPROPRIATE TRANSMISSIONS. ▲ Maintain a safe distance from all antennas. ▲ Do not stop or work in front of active antennas. ▲ Use personal RF MONITORS while working at this site. ▲ Replace all transmitter antennas after service. ▲ Do not mount or use antennas in equipment room. </div>
<p>SITE IDENTIFICATION SIGNAGE</p> <div style="text-align: center;">  </div>	<p>RF SIGNAGE</p> <div style="display: flex; justify-content: space-around; align-items: center;"> <div style="text-align: center;">  </div> <div style="text-align: center;">  </div> <div style="text-align: center;">  </div> </div>
<p>PROP 65</p>	<p>NO TRESPASSING SIGNAGE</p> <div style="text-align: center;">  </div>

INSURED FOR:
**DRY CREEK
JONESVILLE**
6521 GREEN VALLEY
ROAD
PLACERVILLE, CALIFORNIA
95867



EPIC
WIRELESS GROUP LLC

M SQUARE
WIRELESS

CLIENT REF NO:	0742833
PROJECT NO:	1074933
DRAWN BY:	MS
DESIGNED BY:	MM

REV	DATE	DESCRIPTION
D	07/11/2011	SCALE 20x 20x 40x 40x 40x
E	07/12/2011	SCALE 20x
F	07/12/2011	SCALE 20x
A	08/02/2011	SCALE 20x 40x 40x 40x
REV	DATE	DESCRIPTION

LICENSED:

IT IS A VIOLATION OF LAW FOR ANY PERSON, UNDER PENALTY AND OTHER LAWS, THE DUTY OF A LICENSED PROFESSIONAL ENGINEER, TO ALIAS THE OCCASION.

SHEET TITLE
GENERAL NOTES

SHEET NUMBER
GN-2

**CUP-R21-0049 AT&T VERIZON COLOCATION CELL TOWER REVISION
EXHIBIT F - SITE PLANS**

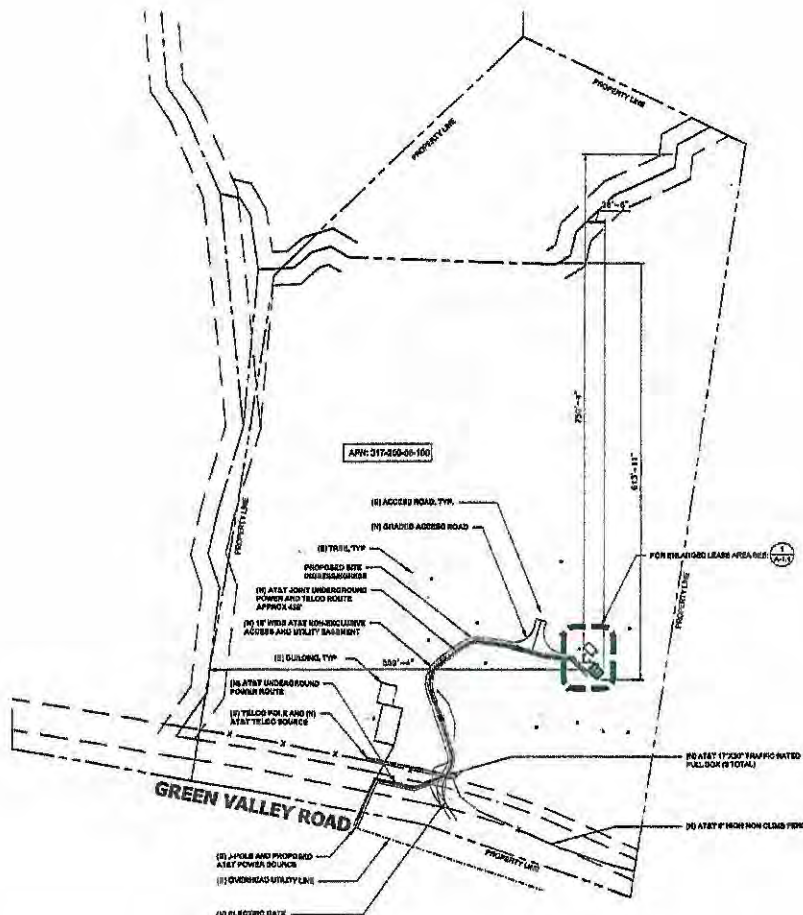
NOTES:

1. THE WIRELESS COMMUNICATION FACILITY COMPLIES WITH FEDERAL STANDARDS FOR RADIO FREQUENCY IN ACCORDANCE WITH THE TELECOMMUNICATIONS ACT OF 1990 AND SUBSEQUENT AMENDMENTS AND ANY OTHER REGULATIONS IMPOSED BY STATE OR FEDERAL REGULATORY AGENCIES.
2. NO EXISTING FENCES AT ALL ARE BEING ADDED OR REMOVED AS PART OF THE NEW INSTALLATION.
3. THE BELOW GRADING INFORMATION IS AN ESTIMATE. A TRENCH IS TO BE 3'-0" DEEP AND 18" WIDE - ALL OPENLS TO BE PLACED BACK INTO THE GRADE & COMPACTED TOP SOIL. CONCRETE FOOTING IS TO BE 18" WIDE WITH A 2'-0" DIA. CIRCULAR HOLE TO BE 3" FROM TOTAL DEEP - 1/2" ABOVE EXISTING GROUND TO BE IMPACTED 3-YARD BUFFER. ALL POLES TO BE REMOVED FROM PROJECT SITE.



DISCLAIMER:
THIS SET OF DRAWINGS WAS PREPARED UTILIZING INFORMATION OBTAINED FROM PUBLIC DOCUMENTS MADE AVAILABLE ON THE SUBJECTIVE WEBSITE. EXCALIBUR WIRELESS CANNOT GUARANTEE THE ACCURACY OF THIS DATA AND INFORMATION PROVIDED ON THE CONSTRUCTION MESSAGE AND HEREBY EXPRESSLY DISCLAIMS ANY RESPONSIBILITY FOR IT'S TRUTH, VALIDITY, RELIABILITY, ACCURACY, AND/OR QUANTITY OF ANY DATA AND INFORMATION, THE PRICE, LOSS OR DAMAGE FOR ILLUSTRATION PURPOSES ONLY AND THE NOT INTENDED TO BE USED AS A SERVICE PRODUCT. USER ACCEPTS RESPONSIBILITY FOR THE UNAUTHORIZED USE OR TRANSMISSION OF ANY SUCH DATA OR INFORMATION IN ITS ACTUAL OR ALTERED FORM.

LEGEND	
	PROPERTY LINE - SUBJECT PARCEL
	EXISTING SETBACK LINE
	EXISTING FENCE LINE
	EXISTING ROAD
	EXISTING BUILDING



SITE PLAN

24"x36" SCALE: 1" = 80'-0"
11"x17" SCALE: 1" = 160'-0"

STAND FOR:
**DRY CREEK
JONESVILLE**
6521 GREEN VALLEY
ROAD
PLACERVILLE, CALIFORNIA
95667



AT&T SITE NO:	044518
PROJECT NO:	1318788
DRAWN BY:	EG
CHECKED BY:	AM

REV	DATE	DESCRIPTION	BY
B	07/21/2011	USE 24" DIA. WTR MAIN	EG
C	04/26/2011	100% 24"	EG
D	01/27/2011	100% 24"	EG
A	02/24/2011	ADD 24" DIA WTR MAIN	EG

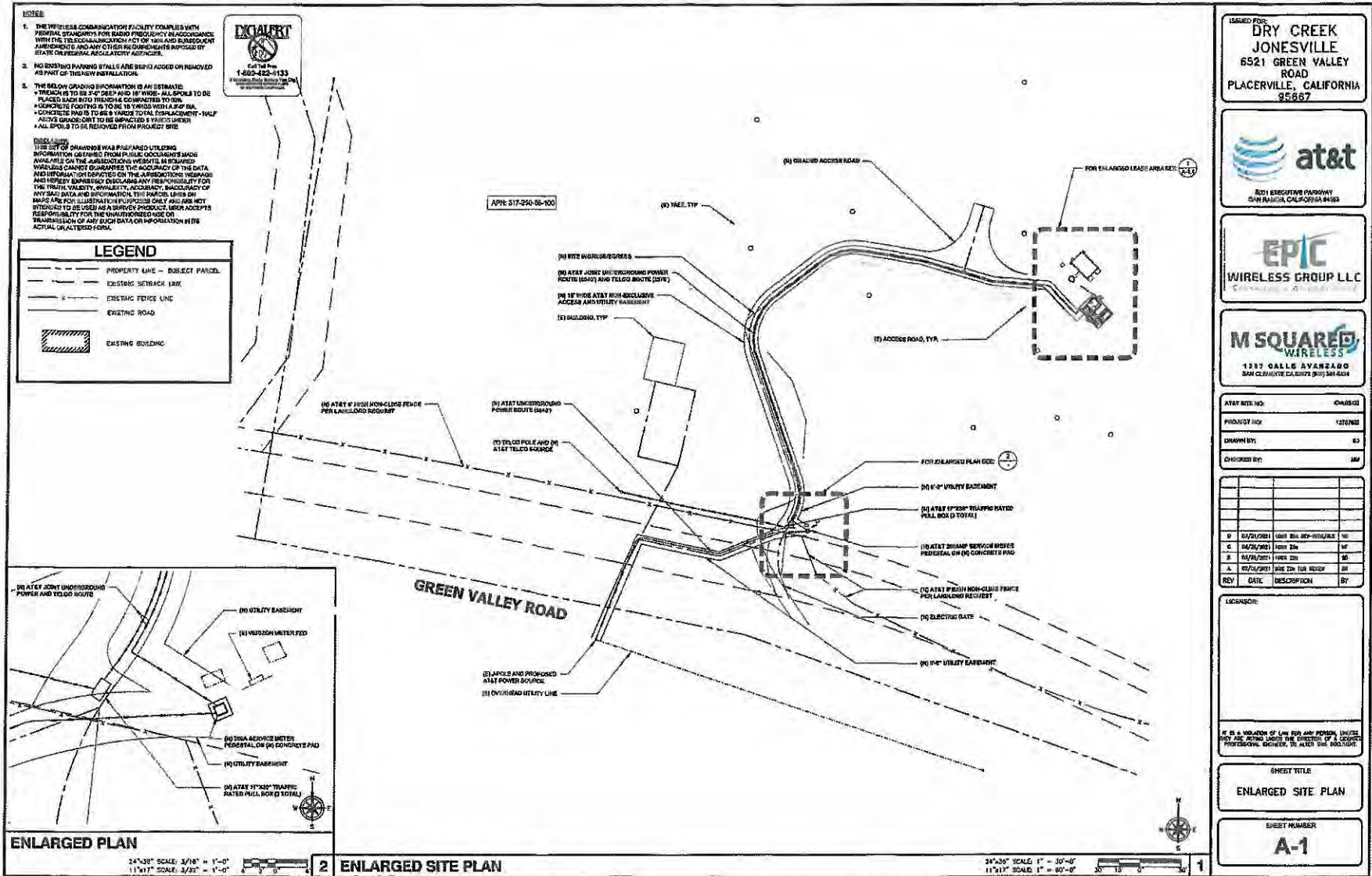
LEGEND:

IT IS A VIOLATION OF LAW FOR ANY PERSON, UNLESS THEY ARE ACTING UNDER THE DIRECTION OF A LICENSED PROFESSIONAL ENGINEER, TO ALTER THIS DOCUMENT.

SHEET TITLE:
SITE PLAN

SHEET NUMBER:
A-0

**CUP-R21-0049 AT&T VERIZON COLOCATION CELL TOWER REVISION
EXHIBIT F - SITE PLANS**



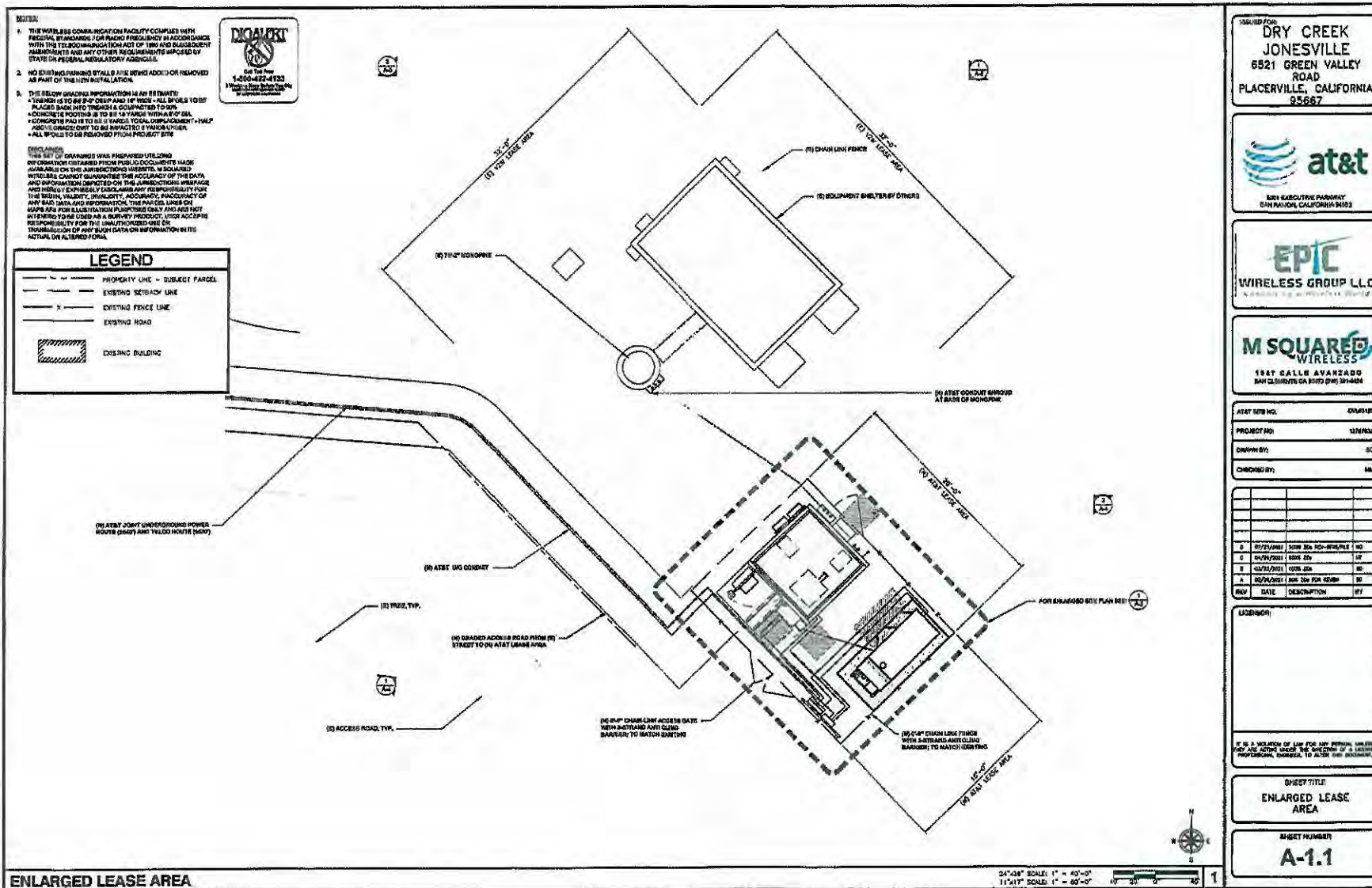
ISSUED FOR:
DRY CREEK JONESVILLE
6521 GREEN VALLEY ROAD
PLACERVILLE, CALIFORNIA 95667



AT&T SITE NO: CHN0512
PROJECT NO: 1370760
DRAWN BY: BJ
CHECKED BY: JM

IF IS A VIOLATION OF LAW FOR ANY PERSON, UNLESS FIRST ASKED TO STOP, TO ENTER THE OFFICES OF A LICENSED PROFESSIONAL ENGINEER TO ALTER THE LOGSHEET.

**CUP-R21-0049 AT&T VERIZON COLOCATION CELL TOWER REVISION
EXHIBIT F - SITE PLANS**



ISSUED FOR:
**DRY CREEK
JONESVILLE**
6521 GREEN VALLEY
ROAD
PLACERVILLE, CALIFORNIA
95667



AT&T SITE NO.	0045128
PROJECT NO.	1217030
DRAWN BY:	SC
CHECKED BY:	ML

REV	DATE	DESCRIPTION	BY

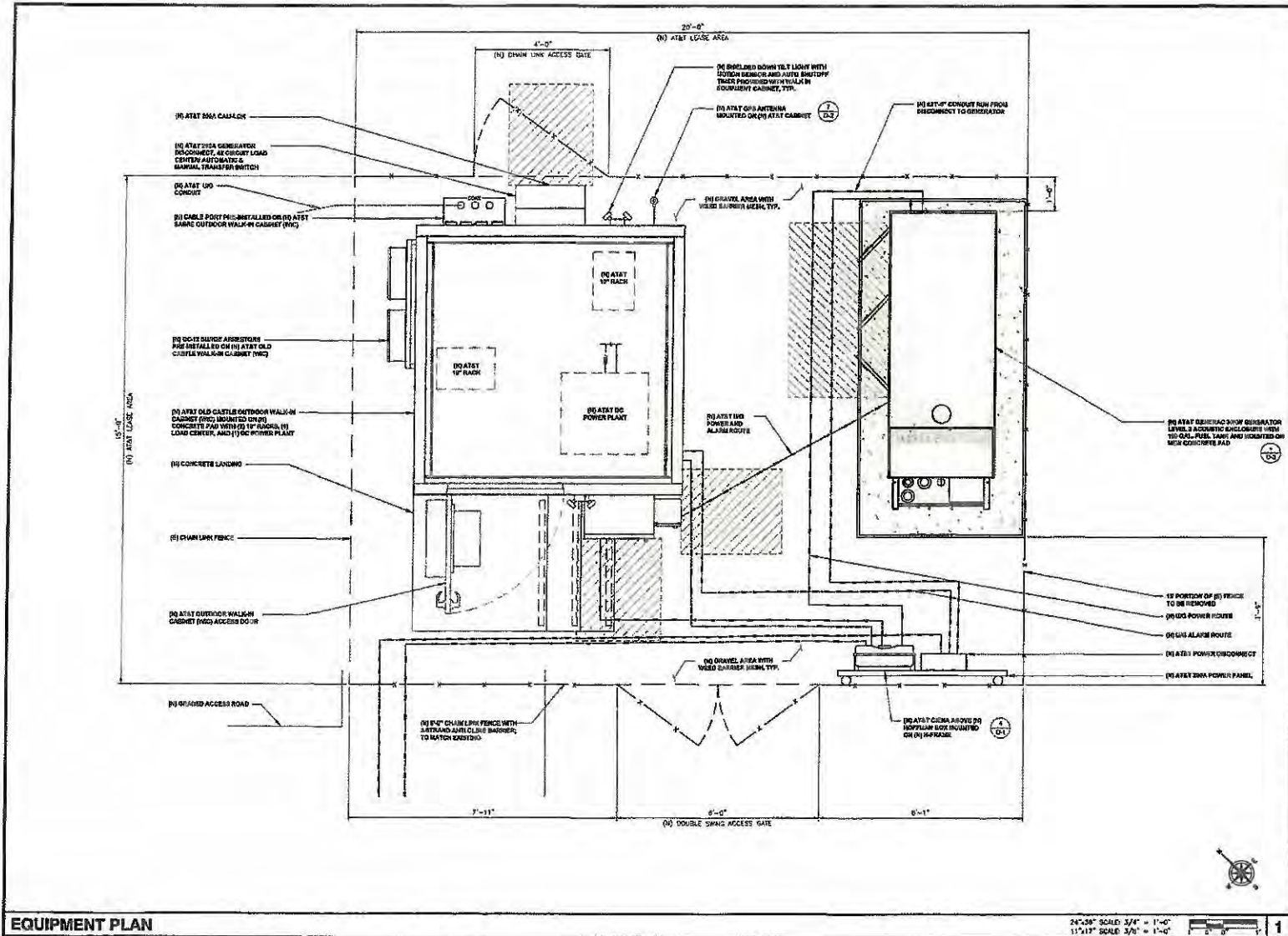
USER(S):

IT IS A VIOLATION OF LAW FOR ANY PERSON, UNLESS SET AS FORTH UNDER THE CONTROL OF A LICENSED PROFESSIONAL ENGINEER, ARCHITECT, OR SURVEYOR, TO ALTER THE DRAWING.

SHEET TITLE:
ENLARGED LEASE AREA

SHEET NUMBER:
A-1.1

**CUP-R21-0049 AT&T VERIZON COLOCATION CELL TOWER REVISION
EXHIBIT F - SITE PLANS**



DRY CREEK
JONESVILLE
8521 GREEN VALLEY
ROAD
PLACERVILLE, CALIFORNIA
95667



AT&T SITE NO:	041976
PROJECT NO:	137033
DESIGN BY:	SD
CHECKED BY:	MA

REV	DATE	DESCRIPTION	BY
0	02/21/2013	1410 SW 140-NV-PL-0	NO
1	04/26/2013	1410 SW 140-NV-PL-0	AF
2	04/22/2013	1410 SW 140-NV-PL-0	SE
3	02/08/2013	1410 SW 140-NV-PL-0	SE

LICENSE:

 IF A VIOLATION OF LAW FOR ANY PERSON, OFFICE OR FIRM WITHIN THE JURISDICTION OF A LICENSED PROFESSIONAL ENGINEER, TO SIGN THE DOCUMENT.

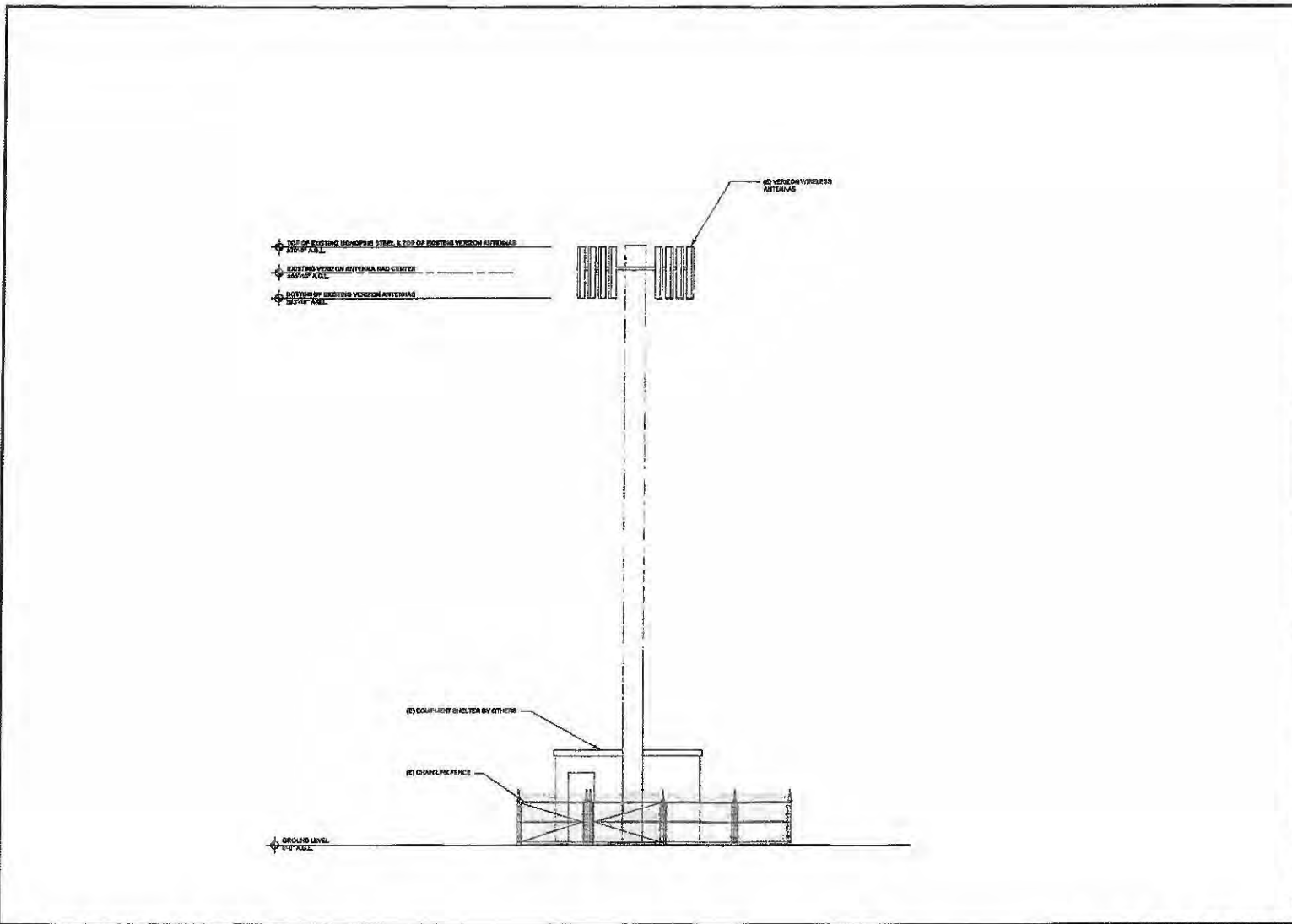
SHEET TITLE
EQUIPMENT PLAN

SHEET NUMBER
A-2

EQUIPMENT PLAN

24"X36" SCALE 3/4" = 1'-0"
11"X17" SCALE 3/8" = 1'-0"

**CUP-R21-0049 AT&T VERIZON COLOCATION CELL TOWER REVISION
EXHIBIT F - SITE PLANS**



ISSUED FOR:
**DRY CREEK
JONESVILLE**
8521 GREEN VALLEY
ROAD
PLACERVILLE, CALIFORNIA
95667



AT&T SITE NO: 040212
PROJECT NO: 107090
DRAWN BY: SD
CHECKED BY: AA

REV	DATE	DESCRIPTION	BY
D	11/21/2011	ISS 201 REV-201/11	NO
C	04/26/2011	ISS 201	MP
B	12/22/2010	ISS 201	SD
A	04/14/2011	ISS 201 FOR RENEW	SD

LICENSE NO.

IT IS A VIOLATION OF THE FIDELITY OF ANY PERSON, UNLESS THEY ARE ACTING UNDER THE DIRECTION OF A LICENSED PROFESSIONAL ENGINEER, TO ALTER THIS DOCUMENT.

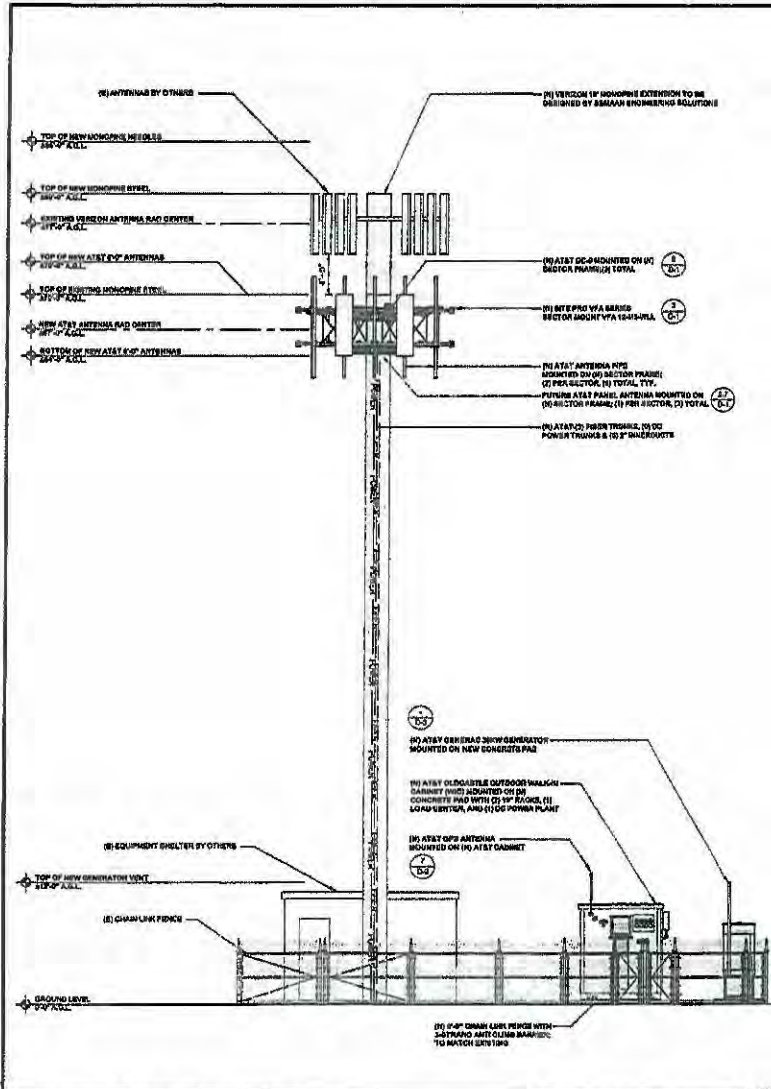
SHEET TITLE
EXISTING ELEVATION

SHEET NUMBER
A-4

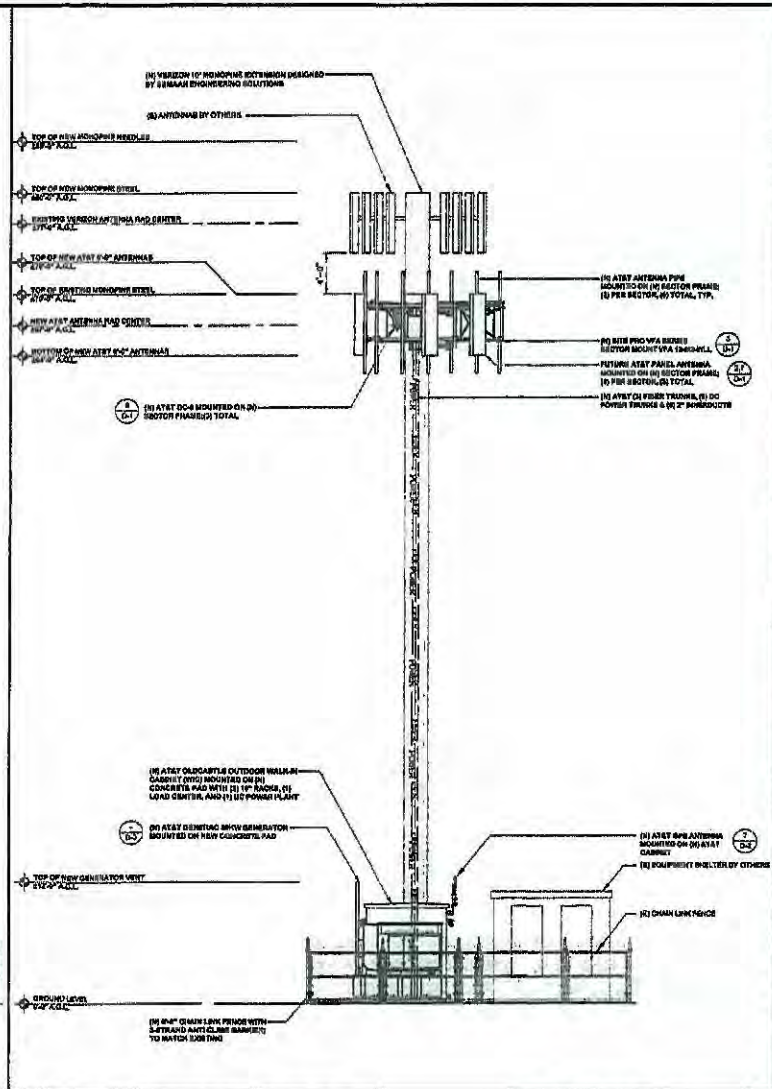
EXISTING SOUTHWEST ELEVATION

24"X36" SCALE: 3/16" = 1'-0"
11"X17" SCALE: 3/32" = 1'-0"

CUP-R21-0049 AT&T VERIZON COLOCATION CELL TOWER REVISION
EXHIBIT F - SITE PLANS



PROPOSED SOUTHWEST ELEVATION
24"x36" SCALE: 3/16" = 1'-0"
11"x17" SCALE: 3/32" = 1'-0"



PROPOSED SOUTHEAST ELEVATION
24"x36" SCALE: 3/16" = 1'-0"
11"x17" SCALE: 3/32" = 1'-0"

ISSUED FOR:
DRY CREEK JONESVILLE
6521 GREEN VALLEY ROAD
PLACERVILLE, CALIFORNIA 95867

3001 EXECUTIVE PARKWAY
SAN RAMON, CALIFORNIA 94583

1387 CALLE AVANZADO
SAN CLEMENTE, CA 92673 (949) 341-4434

AT&T SITE NO.	04L20123
PROJECT NO.	1274723
DRAWN BY:	AO
DESIGNED BY:	MM

REV	DATE	DESCRIPTION	BY
0	01/21/2011	1406 2nd REV-MIS/ALS	MS
1	01/24/2011	1508 2nd	MS
2	01/24/2011	1508 2nd	MS
3	01/24/2011	1508 2nd FOR REVIEW	MS

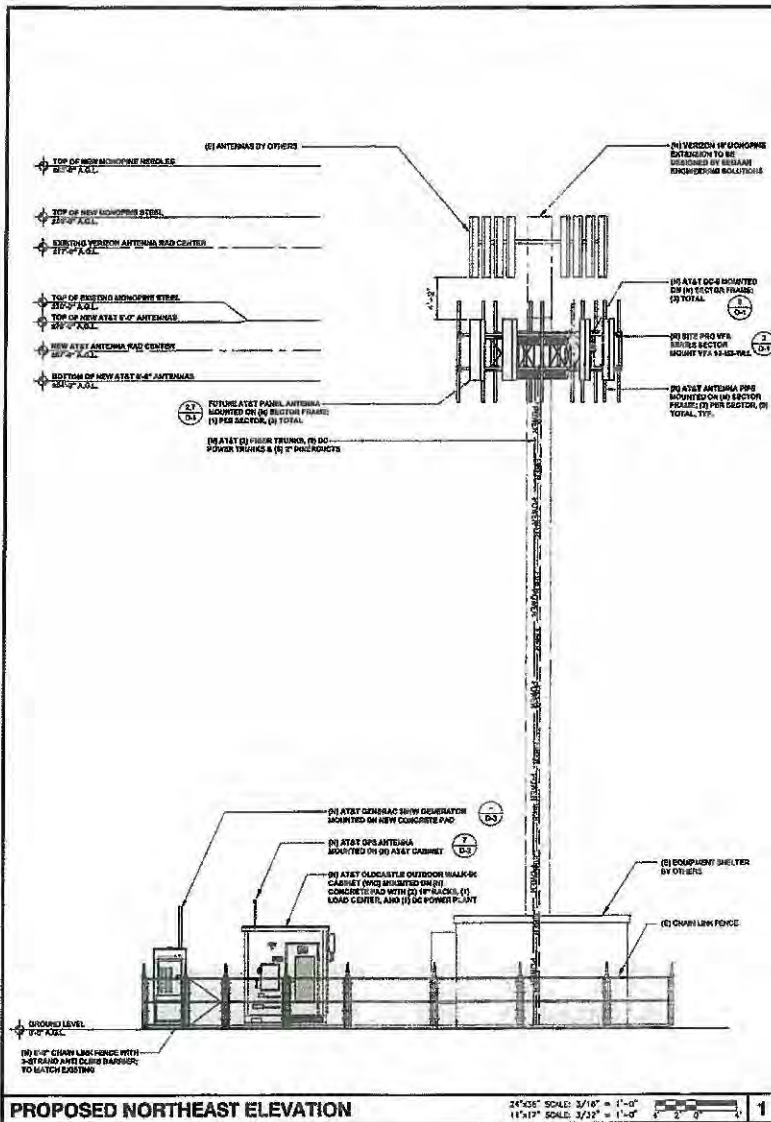
LICENSED:

IF IT IS A VIOLATION OF LAW FOR ANY REASON, PLEASE WITHHOLD ANY AND ALL FEES, UNLESS THE SERVICE OF A LICENSEE PROFESSIONAL ENGINEER, DESIGNER, TO SIGN THE DOCUMENT.

SHEET TITLE
PROPOSED ELEVATIONS

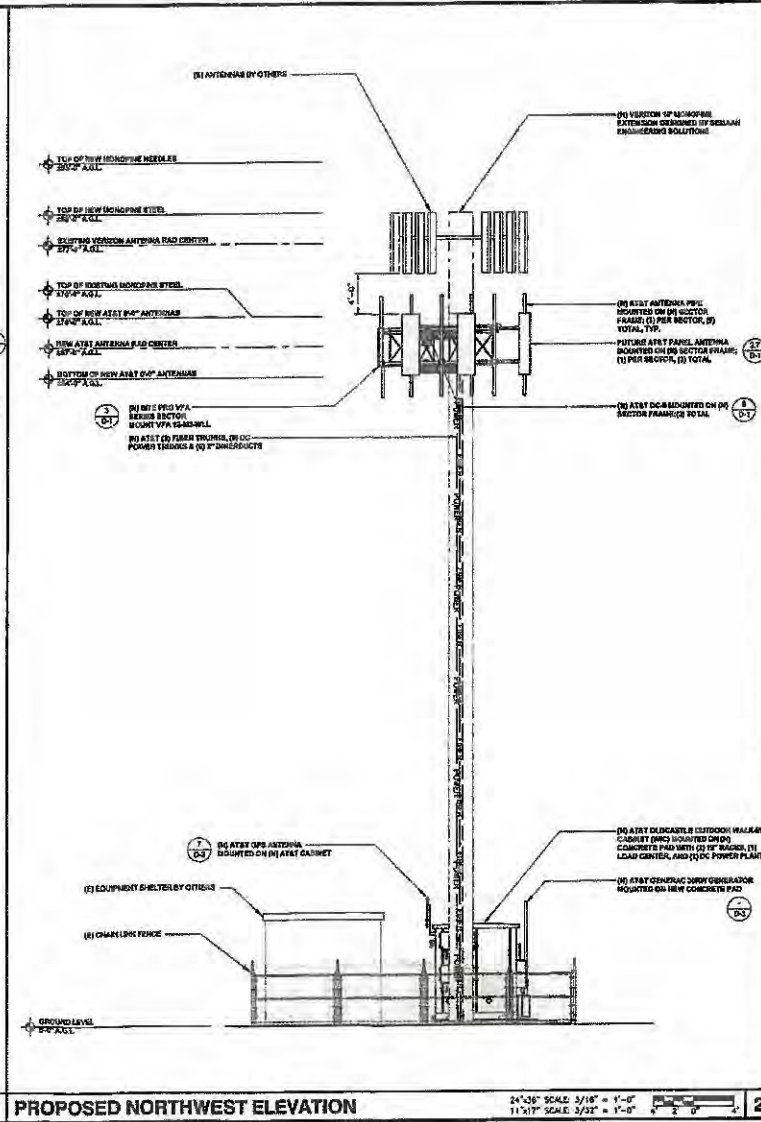
SHEET NUMBER
A-5

**CUP-R21-0049 AT&T VERIZON COLOCATION CELL TOWER REVISION
EXHIBIT F - SITE PLANS**



PROPOSED NORTHEAST ELEVATION

24'x36" SCALE: 3/16" = 1'-0"
11'x17" SCALE: 3/32" = 1'-0"



PROPOSED NORTHWEST ELEVATION

24'x36" SCALE: 3/16" = 1'-0"
11'x17" SCALE: 3/32" = 1'-0"

REQUIRED FOR:
DRY CREEK JONESVILLE
6521 GREEN VALLEY ROAD
PLACERVILLE, CALIFORNIA 95667

0001 EXECUTIVE PARKWAY
SAN RAFAEL, CALIF 94903

WIRELESS GROUP LLC
A Division of Wireless Group

1337 CALLE AVANZADO
SAN CLEMENTE, CA 92673 (949) 361-0004

AT&T SPEC: 04/01/03
PROJECT NO: 1376/03
DRAWING: 60
CHECKED BY: SM

REV	DATE	DESCRIPTION	BY
B	02/21/2001	NEW 20' W/4-ANTENNAS	SM
C	04/20/2001	NEW 20'	SM
E	04/20/2001	NEW 20'	SM
A	04/20/2001	NEW 20' PER OWNER	SM

USER: _____

IF IT IS A VIOLATION OF LAW FOR ANY REASON, USER'S ONLY USE SHALL UNDER THE SUPERVISION OF A LICENSED PROFESSIONAL ENGINEER, TO FACILITATE THE OCCASION.

SHEET TITLE
PROPOSED ELEVATIONS

SHEET NUMBER
A-6

May 26, 2022

KAREN L. GARNER / JS

CUP-R21-0049

2021 AUG 26 PM 2:25

Version Date: August 3, 2021

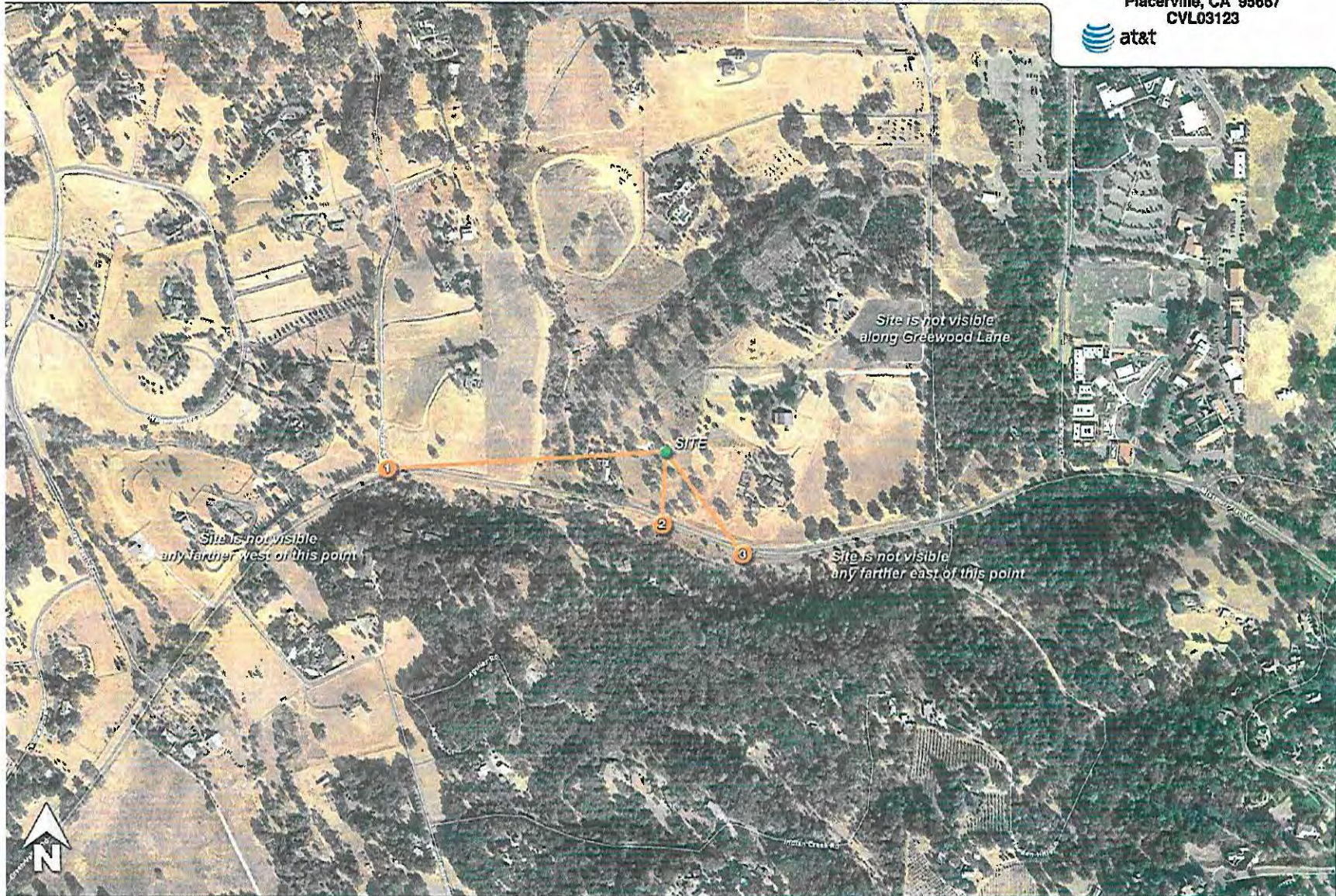
EXECUTIVE SECRETARY

Aerial photograph showing the viewpoints for the photosimulations.

RECEIVED
PLANNING DEPARTMENT

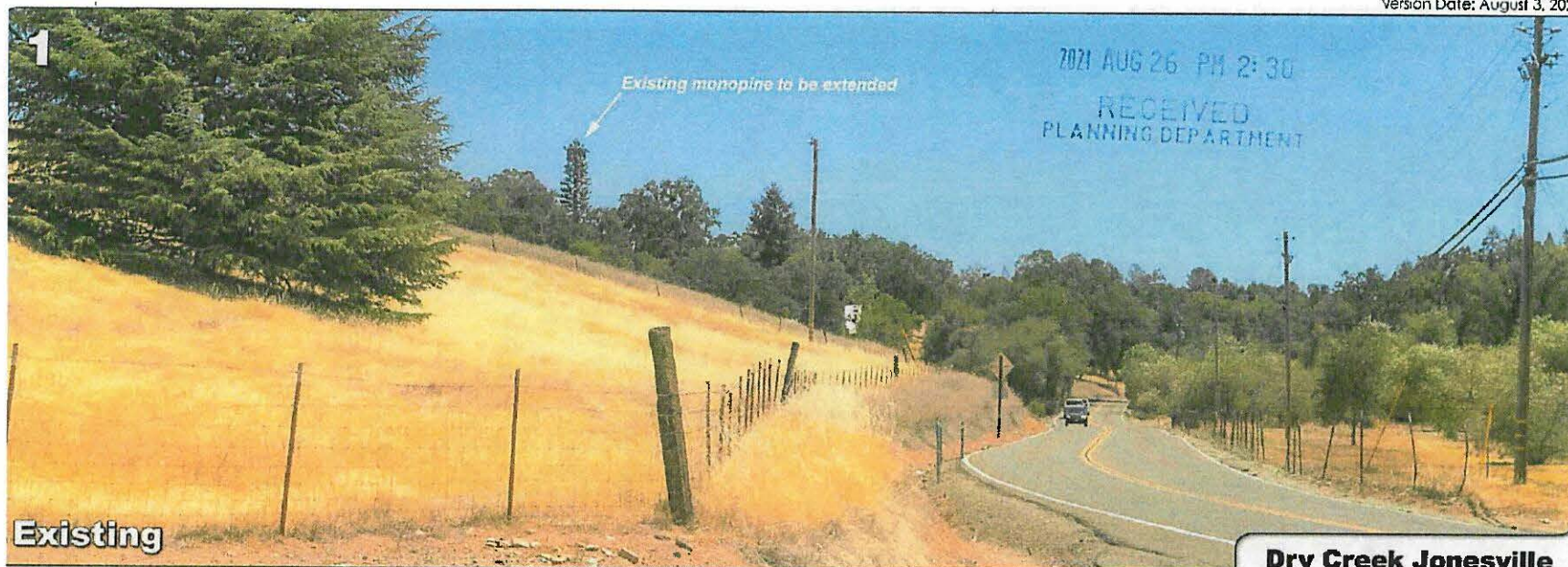
Dry Creek Jonesville

6521 Green Valley Rd
Placerville, CA 95667
CVL03123



CUP-R21-0049 AT&T VERIZON COLOCATION CELL TOWER REVISION
EXHIBIT G - SITE PHOTO SIMULATIONS

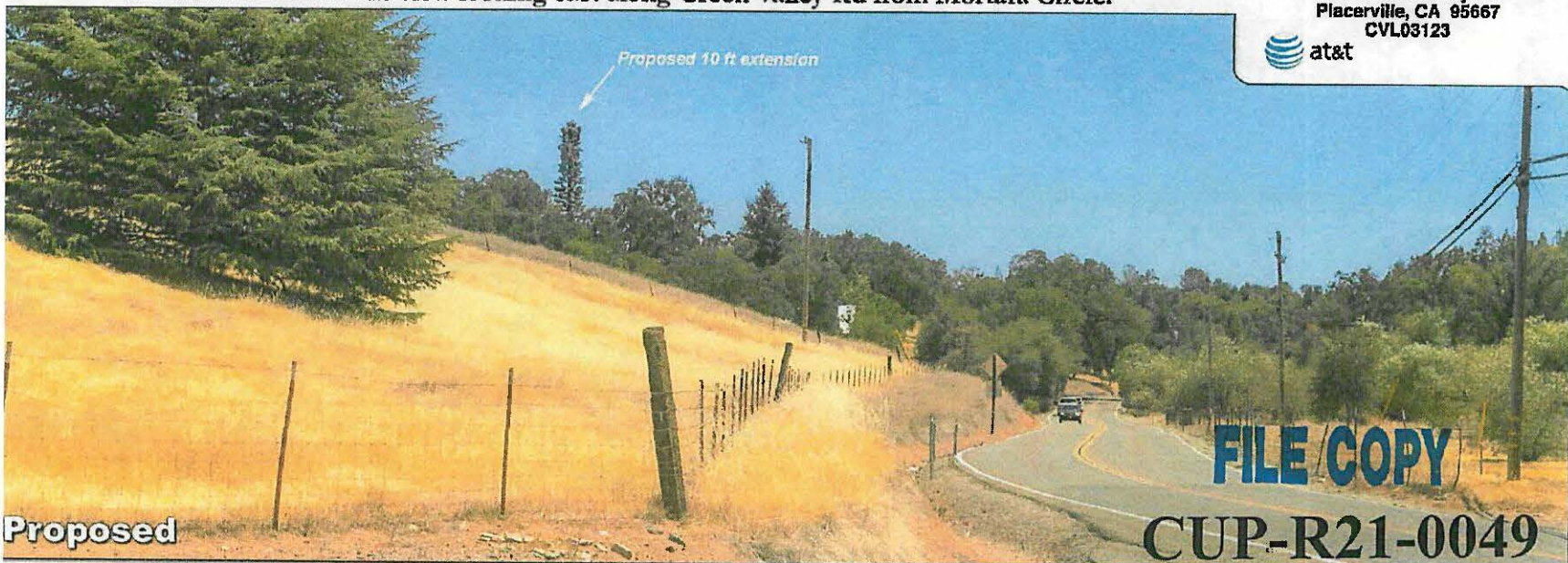
Version Date: August 3, 2021



Photosimulation of the view looking east along Green Valley Rd from Mortara Circle.

Dry Creek Jonesville

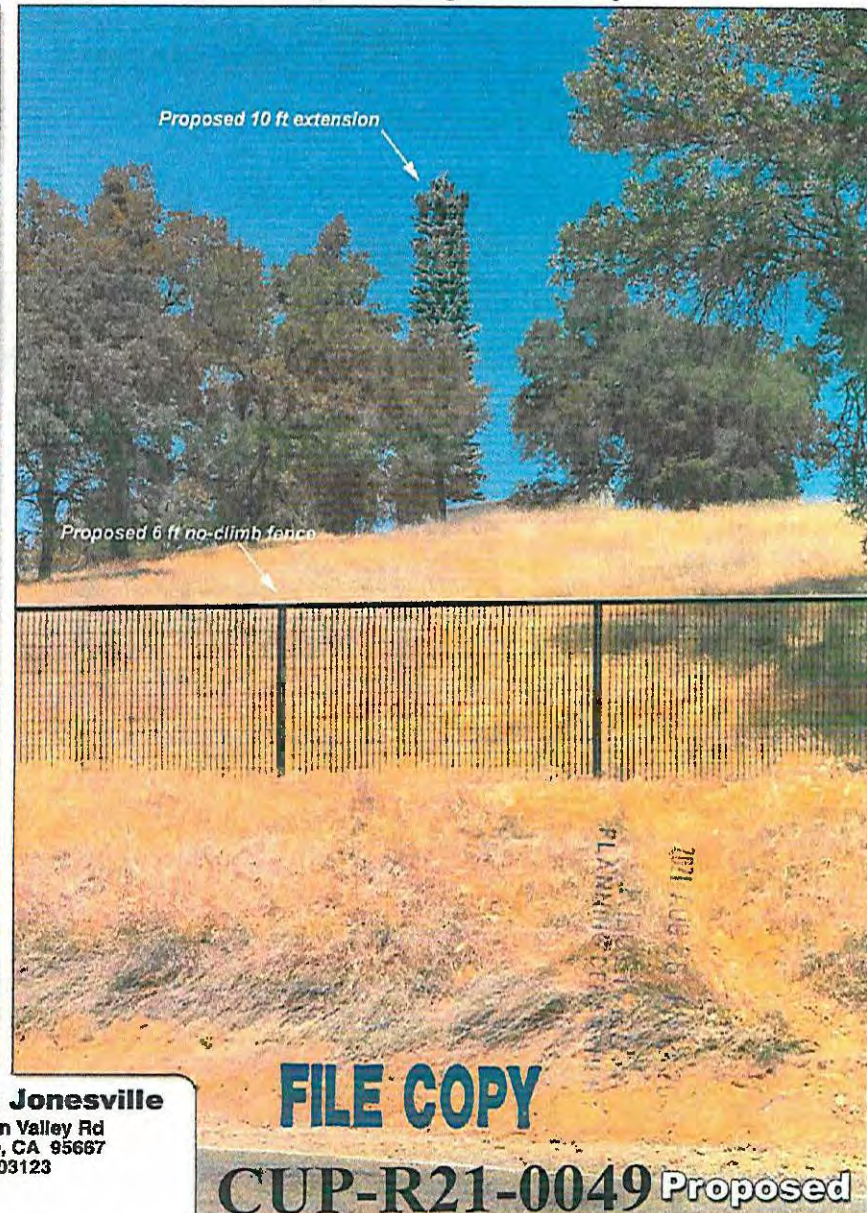
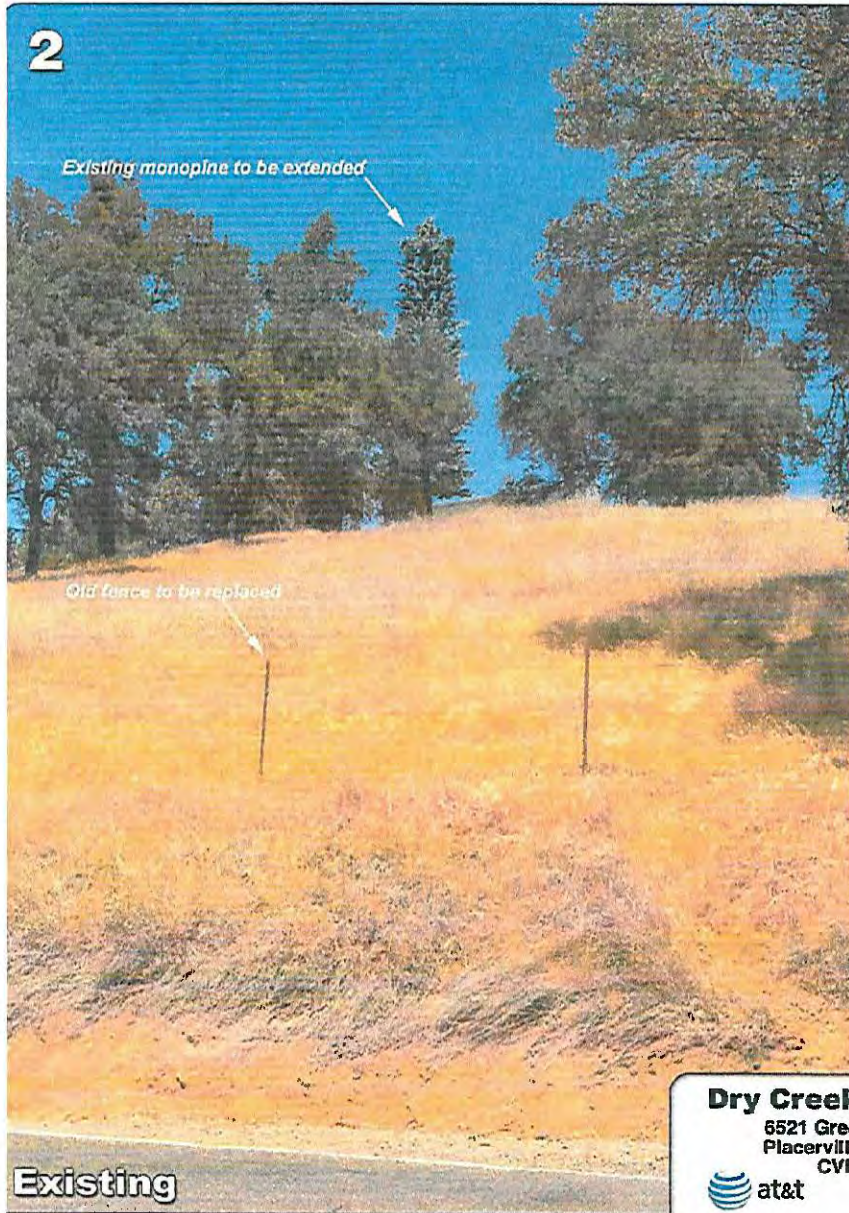
6521 Green Valley Rd
Placerville, CA 95667
CVL03123



CUP-R21-0049 AT&T VERIZON COLOCATION CELL TOWER REVISION
EXHIBIT G - SITE PHOTO SIMULATIONS

Version Date: August 3, 2021

Photosimulation of the view looking due north, between the trees, from the nearest point along Green Valley Road.



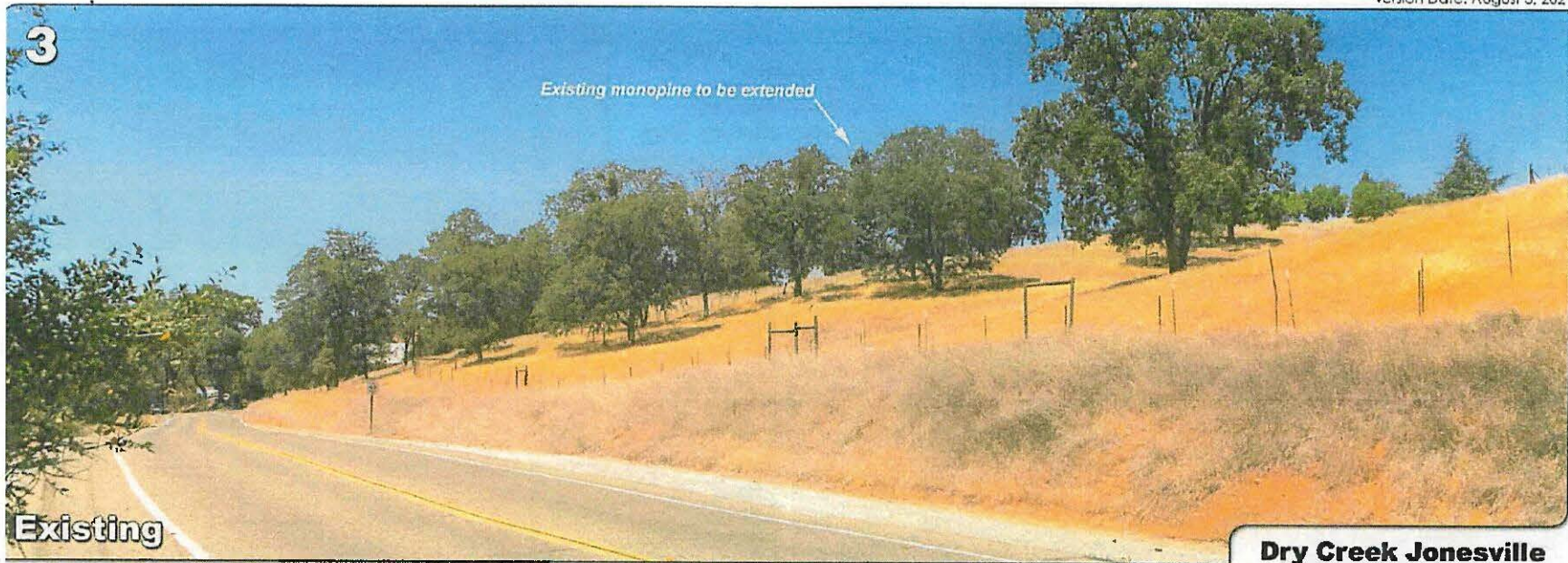
Dry Creek Jonesville

6521 Green Valley Rd
Placerville, CA 95667
CVL03123



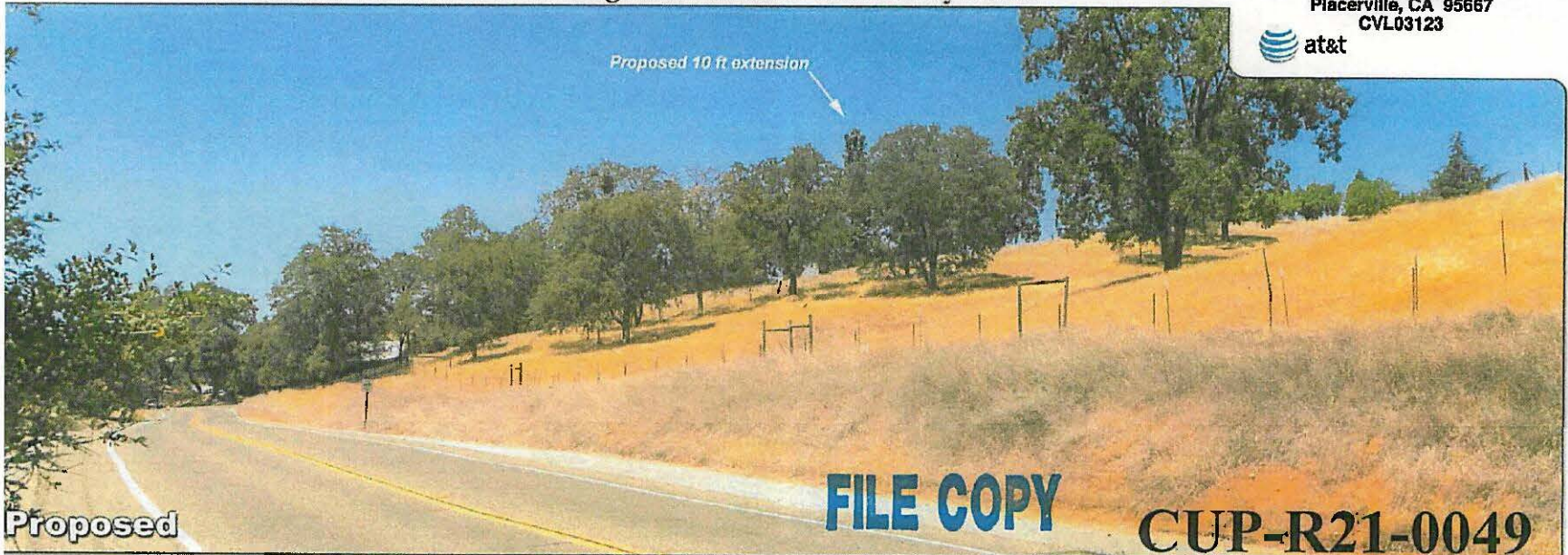
CUP-R21-0049 AT&T VERIZON COLOCATION CELL TOWER REVISION
EXHIBIT G - SITE PHOTO SIMULATIONS

Version Date: August 3, 2021



Photosimulation of the view looking northwest from Green Valley Road.

Dry Creek Jonesville
6521 Green Valley Rd
Placerville, CA 95667
CVL03123



CUP-R21-0049 AT&T VERIZON COLOCATION CELL TOWER REVISION
EXHIBIT H - RADIO FREQUENCY (RF) REPORT

2021 AUG 26 PM 2:25

RECEIVED
PLANNING DEPARTMENT



WATERFORD

Radio Frequency Emissions Compliance Report For AT&T Mobility

Site Name:	Dry Creek Jonesville	Site Structure Type:	Monopine
Address:	6521 Green Valley Road Placerville, CA	Latitude:	38.720706
Report Date:	August 7, 2019	Longitude:	-120.875592
		Project:	New Build

Compliance Statement

Based on information provided by AT&T Mobility and predictive modeling, the Dry Creek Jonesville installation proposed by AT&T Mobility will be compliant with Radiofrequency Radiation Exposure Limits of 47 C.F.R. §§ 1.1307(b)(3) and 1.1310. RF alerting signage and restricting access to the Monopine to authorized climbers that have completed RF safety training is required for Occupational environment compliance. The proposed operation will not expose members of the General Public to hazardous levels of RF energy at ground level or in adjacent buildings.

Certification

I, David H. Kiser, am the reviewer and approver of this report and am fully aware of and familiar with the Rules and Regulations of both the Federal Communications Commissions (FCC) and the Occupational Safety and Health Administration (OSHA) with regard to Human Exposure to Radio Frequency Radiation, specifically in accordance with FCC's OET Bulletin 65. I have reviewed this Radio Frequency Exposure Assessment report and believe it to be both true and accurate to the best of my knowledge.

David H. Kiser, P. E. 2019-06-15-300-04100



General Summary

The compliance framework is derived from the Federal Communications Commission (FCC) Rules and Regulations for preventing human exposure in excess of the applicable Maximum Permissible Exposure ("MPE") limits. At any location at this site, the power density resulting from each transmitter may be expressed as a percentage of the frequency-specific limits and added to determine if 100% of the exposure limit has been exceeded. The FCC Rules define two tiers of permissible exposure differentiated by the situation in which the exposure takes place and/or the status of the individuals who are subject to exposure. General Population / Uncontrolled exposure limits apply to those situations in which persons may not be aware of the presence of electromagnetic energy, where exposure is not employment-related, or where persons cannot exercise control over their exposure. Occupational / Controlled exposure limits apply to situations in which persons are exposed as a consequence of their employment, have been made fully aware of the potential for exposure, and can exercise control over their exposure. Based on the criteria for these classifications, the FCC General Population limit is considered to be a level that is safe for continuous exposure time. The FCC General Population limit is 5 times more restrictive than the Occupational limits.

APPROVED
EL DORADO COUNTY
PLANNING COMMISSION

DATE MAY 26, 2022

BY KAREN L. GARNER/JS
EXECUTIVE SECRETARY

CUP-R21-0049

**CUP-R21-0049 AT&T VERIZON COLOCATION CELL TOWER REVISION
EXHIBIT H - RADIO FREQUENCY (RF) REPORT**

Dry Creek Jonesville -- New Site Build 080719

Table 1: FCC Limits

Frequency (MHz)	Limits for General Population/ Uncontrolled Exposure		Limits for Occupational/ Controlled Exposure	
	Power Density (mW/cm ²)	Averaging Time (minutes)	Power Density (mW/cm ²)	Averaging Time (minutes)
30-300	0.2	30	1	6
300-1500	f/1500	30	f/300	6
1500-100,000	1.0	30	5.0	6

f=Frequency (MHz)

In situations where the predicted MPE exceeds the General Population threshold in an accessible area as a result of emissions from multiple transmitters, FCC licensees that contribute greater than 5% of the aggregate MPE share responsibility for mitigation.

Based on the computational guidelines set forth in FCC OET Bulletin 65, Waterford Consultants, LLC has developed software to predict the overall Maximum Permissible Exposure possible at any location given the spatial orientation and operating parameters of multiple RF sources. The power density in the Far Field of an RF source is specified by OET-65 Equation 5 as follows:

$$S = \frac{EIRP}{4\pi R^2} \text{ (mW/cm}^2\text{)}$$

where EIRP is the Effective Radiated Power relative to an isotropic antenna and R is the distance between the antenna and point of study. Additionally, consideration is given to the manufacturers' horizontal and vertical antenna patterns as well as radiation reflection. At any location, the predicted power density in the Far Field is the spatial average of points within a 0 to 6-foot vertical profile that a person would occupy. Near field power density is based on OET-65 Equation 20 stated as

$$S = \left(\frac{180}{\theta_{BW}}\right) \cdot \frac{100 \cdot P_{in}}{\pi \cdot R \cdot h} \text{ (mW/cm}^2\text{)}$$

where P_{in} is the power input to the antenna, θ_{BW} is the horizontal pattern beamwidth and h is the aperture length.

Some antennas employ beamforming technology where RF energy allocated to each customer device is dynamically directed toward their location. In the analysis presented herein, predicted exposure levels are based on all beams at full utilization (i.e. full power) simultaneously focused in any direction. As this condition is unlikely to occur, the actual power density levels at ground and at adjacent structures are expected to be less than the levels reported below. These theoretical results represent worst-case predictions as all RF emitters are assumed to be operating at 100% duty cycle.

For any area in excess of 100% General Population MPE, access controls with appropriate RF alerting signage must be put in place and maintained to restrict access to authorized personnel. Signage must be posted to be visible upon approach from any direction to provide notification of potential conditions within these areas. Subject to other site security requirements, occupational personnel should be trained in RF safety and equipped with personal protective equipment (e.g. RF personal monitor) designed for safe work in the vicinity of RF emitters. Controls such as physical barriers to entry imposed by locked doors, hatches and ladders or other access control mechanisms may be supplemented by alarms that alert the individual and notify site management of a breach in access control. Waterford Consultants, LLC recommends that any work activity in these designated areas or in front of any transmitting antennas be coordinated with all wireless tenants.

**CUP-R21-0049 AT&T VERIZON COLOCATION CELL TOWER REVISION
EXHIBIT H - RADIO FREQUENCY (RF) REPORT**

Dry Creek Jonesville – New Site Build 080719

Analysis

AT&T Mobility proposes the following installation at this location:

- INSTALL (9) NEW AT&T 6'-6" PANEL ANTENNAS
- INSTALL (3) NEW AT&T 6'-0" PANEL ANTENNAS
- INSTALL (3) NEW AT&T RRUS 4415 825 @ANTENNA LEVEL
- INSTALL (3) NEW AT&T RRUS B14 4478 @ANTENNA LEVEL
- INSTALL (6) NEW AT&T RRUS 4449 B5/B12 @ANTENNA LEVEL
- INSTALL (6) NEW AT&T RRUS 8843 B2/B66A@ANTENNA LEVEL
- INSTALL (3) NEW AT&T RRUS E2 829@ ANTENNA LEVEL
- INSTALL (6) NEW AT&T RRUS 32 @ANTENNA LEVEL

The antennas will be mounted on a new 10' extension to a 70-foot monopine with centerlines 77 feet above ground level. The antennas will be oriented towards 90, 210 and 330 degrees. The radio equipment to be operated at this location is capable of a maximum of 40W per 4G channel at 700 MHz, 40W per 4G channel at 850 MHz, 40W per 4G channel at 1900 MHz, 40W per 4G channel at 2100 MHz, and 25W per 4G channel at 2300 MHz. Other appurtenances such as GPS antennas, RRUs and hybrid cable below the antennas are not sources of RF emissions. Panel antennas have been installed at this site by other wireless operators. Assumed operating parameters for these antennas are listed in Appendix A.

CUP-R21-0049 AT&T VERIZON COLOCATION CELL TOWER REVISION EXHIBIT H - RADIO FREQUENCY (RF) REPORT

Dry Creek Jonesville – New Site Build 080719



Figure 1: Antenna Locations

Power density decreases significantly with distance from any antenna. The panel-type antennas to be employed at this site are highly directional by design and the orientation in azimuth and mounting elevation, as documented, serves to reduce the potential to exceed MPE limits at any location other than directly in front of the antennas. For accessible areas at ground level, the maximum predicted power density level resulting from all AT&T Mobility operations is 0.7504% of the FCC General Population limits. Based on the operating parameters in Appendix A, the cumulative power density level at this location from all antennas is 1.0663% of the FCC General Population limits. Incident at adjacent buildings depicted in Figure 1, the maximum predicted power density level resulting from all AT&T Mobility operations is 5.3551% of the FCC General Population limits. Based on the operating parameters in Appendix A, the cumulative power density level at this location from all antennas is 6.5429% of the FCC General Population limits. The proposed operation will not expose members of the General Public to hazardous levels of RF energy at ground level or in adjacent buildings.

Waterford Consultants, LLC recommends posting RF alerting signage with contact information (Caution 2B) at the base of the Monopine to inform authorized climbers of potential conditions near the antennas. These recommendations are depicted in Figure 2.

CUP-R21-0049 AT&T VERIZON COLOCATION CELL TOWER REVISION
EXHIBIT H - RADIO FREQUENCY (RF) REPORT

Dry Creek Jonesville – New Site Build 080719

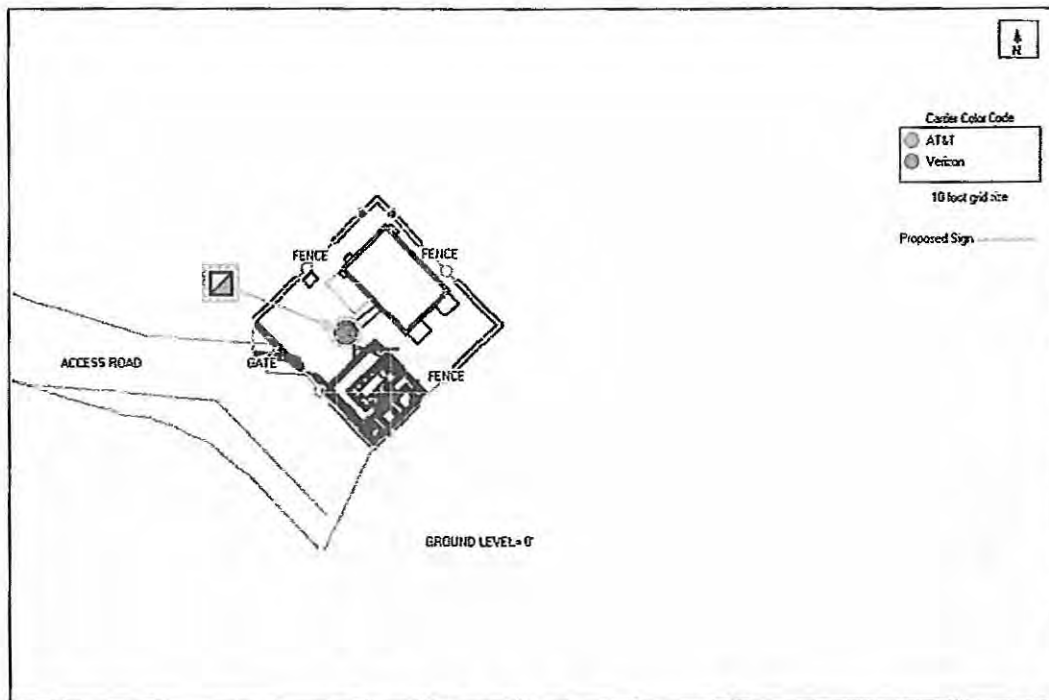


Figure 2: Mitigation Recommendations
Caution 2B posted at base of monopine



**CUP-R21-0049 AT&T VERIZON COLOCATION CELL TOWER REVISION
EXHIBIT H - RADIO FREQUENCY (RF) REPORT**

Dry Creek Jonesville – New Site Build 080719

Appendix A: Assumed Parameters for Antennas Installed by Other Operators

Antenna #:	Carrier:	Manufacturer	Pattern:	Band:	Mech Az (deg):	Mech DT (deg):	H BW (deg):	Length (m):	TPO (W):	Channels:	Loss (dB):	Gain (dBS):	ERP (W):	EIRP (W):	Rad Center (ft):
13	Verizon	COMMSCOPE	NHH-65B-R2B 02DT	700	0	0	65	1.83	80	2	0	12.3	2711	4448	67
14	Verizon	COMMSCOPE	NHH-65B-R2B 02DT	850	0	0	60	1.83	20	8	0	12.6	2938	4821	67
15	Verizon	COMMSCOPE	NHH-65B-R2B 00DT	1900	0	0	69	1.83	40	4	0	15.7	5875	9638	67
16	Verizon	COMMSCOPE	NHH-65B-R2B 00DT	2100	0	0	64	1.83	40	4	0	16.2	6701	10993	67
17	Verizon	COMMSCOPE	NHH-65B-R2B 02DT	700	120	0	65	1.83	80	2	0	12.3	2711	4448	67
18	Verizon	COMMSCOPE	NHH-65B-R2B 02DT	850	120	0	60	1.83	20	8	0	12.6	2938	4821	67
19	Verizon	COMMSCOPE	NHH-65B-R2B 00DT	1900	120	0	69	1.83	40	4	0	15.7	5875	9638	67
20	Verizon	COMMSCOPE	NHH-65B-R2B 00DT	2100	120	0	64	1.83	40	4	0	16.2	6701	10993	67
21	Verizon	COMMSCOPE	NHH-65B-R2B 02DT	700	240	0	65	1.83	80	2	0	12.3	2711	4448	67
22	Verizon	COMMSCOPE	NHH-65B-R2B 02DT	850	240	0	60	1.83	20	8	0	12.6	2938	4821	67
23	Verizon	COMMSCOPE	NHH-65B-R2B 00DT	1900	240	0	69	1.83	40	4	0	15.7	5875	9638	67
24	Verizon	COMMSCOPE	NHH-65B-R2B 00DT	2100	240	0	64	1.83	40	4	0	16.2	6701	10993	67