

El Dorado County GIS - PAST

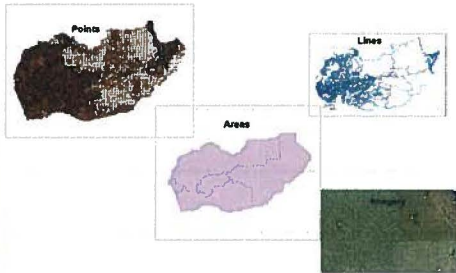


5/21/2013

County Surveyor

1

GIS gives location

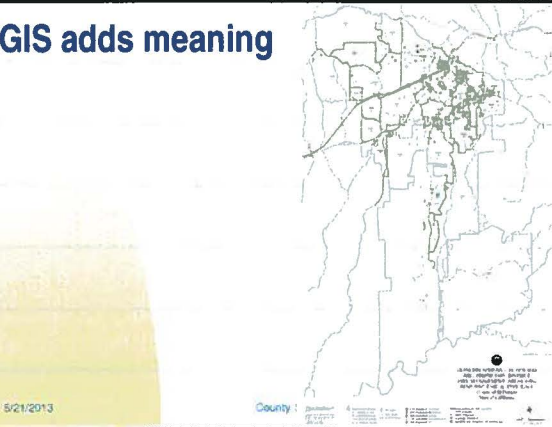


5/21/2013

County Surveyor

2

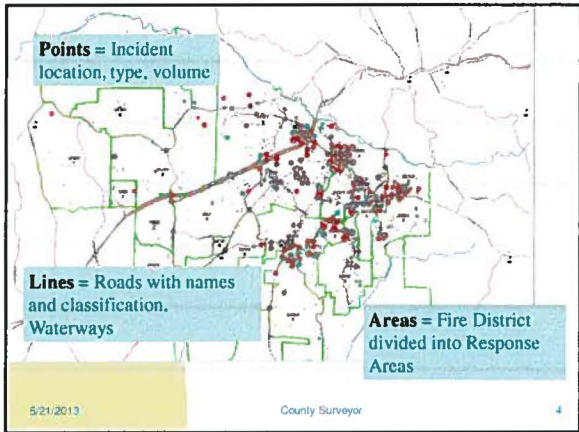
GIS adds meaning



5/21/2013

County Surveyor

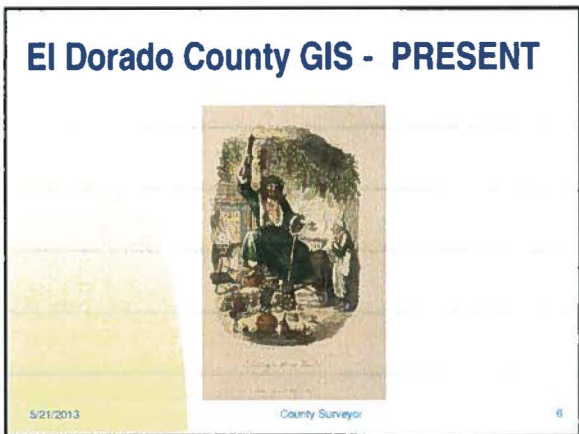
3



GIS needs support

- Hundreds and hundreds of files or themes.
- Files aren't multi-user.
- Maps are pictures in time.
- Work effort isn't re-usable.

5/21/2013 County Surveyor 5



Excerpt from slide presentation 2007

Future
Move to a geo-database.
Build 'services'.

5/21/2013 County Surveyor 7

Geo-database PARCELS

- Parcels – everyone needs them, Planning, Assessor, Recorder all have different “views” of parcels.
- Geo-database – update once pull out “view”
- Supports history, can extract parcels by time period
- Can be shared and updated at same time

5/21/2013 County Surveyor 8

Geo-database TRANSPORTATION

- Roads – everyone needs them, names, old and new, lanes 1, 2,3 4,5, 6, maybe 8.
- They get realigned, renamed, and re-addressed.
- Supports history, can extract roads by time period.
- Can be shared and updated at same time

5/21/2013 County Surveyor 9

Geo-database JURISDICTIONS

- EVERYONE IS IN ONE – City, CSA, ZOB, CSD, Fire, School, Utility, or Improvement districts.
- We can extract a “view” by type of district and even service provided.
- Supports history
- Can be shared and updated at same time

Geo-database

5/21/2013

County Surveyor

10

Geo-database needs support

- One database theme many “views”
- Database tables can be shared.
- They are dynamic.
- They are re-usable.

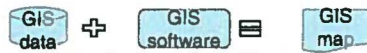
5/21/2013

County Surveyor

11

Services

PAST



Points
Lines
Polygons
Imagery

Filter
Label
Classify
Buffer
Relate
Join

PRESENT



5/21/2013

County Surveyor

12

Services

Link to data is dynamic- changes reflected in Service
Software operations are persistent – Services are Reusable
Services can be “exposed” locally or globally.

Exposed Services can be “consumed” in any mapping environment such as Google, Bing, ESRI, AutoDESK.

“Consumed” Services are used in web applications, internet, intranet, and mobile platforms.

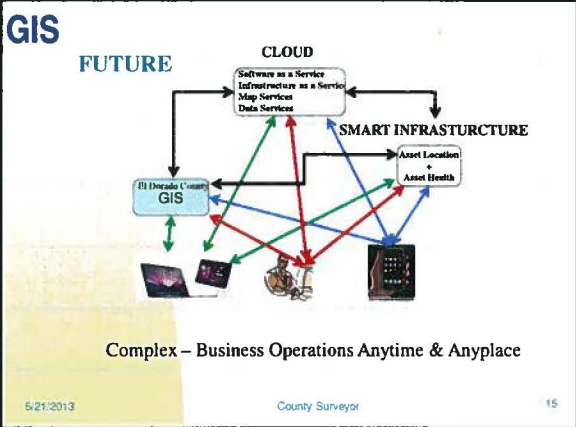
5/21/2013

County Surveyor

13

EI Dorado County GIS - FUTURE





GIS
FUTURE

Crowd Sourced - POI

GOOGLE Imagery

Ad Hoc - Anyone & Anyplace

5/21/2013 County Surveyor 16

GIS
FUTURE

GIS Data

GOOGLE Imagery

Third party - application

Collaboration - Anyone & Anytime

5/21/2013 County Surveyor 17

GIS
FUTURE

ESRI map Imagery

GIS point files

Community Provided Photos

Cloud Based - template based application

Community - Available Anytime

5/21/2013 County Surveyor 18

GIS

PAST	PRESENT	FUTURE
Hundreds of Files	Geo-database many views	Complex
Not Shared	Shared geo-database	Ad-Hoc
Static Maps	Dynamic Services	Unstructured
No Re-Use	Share locally and globally	Collaboration
	Web applications	Community Managed
		Everything Everywhere All the time

5/21/2013 County Surveyor 19

Case No.	Case Name	Case Type	Case Status	Case Date	Case Amount	Case Description
101	Case 101	Case Type 1	Case Status 1	Case Date 1	Case Amount 1	Case Description 1
102	Case 102	Case Type 2	Case Status 2	Case Date 2	Case Amount 2	Case Description 2
103	Case 103	Case Type 3	Case Status 3	Case Date 3	Case Amount 3	Case Description 3
104	Case 104	Case Type 4	Case Status 4	Case Date 4	Case Amount 4	Case Description 4
105	Case 105	Case Type 5	Case Status 5	Case Date 5	Case Amount 5	Case Description 5
106	Case 106	Case Type 6	Case Status 6	Case Date 6	Case Amount 6	Case Description 6
107	Case 107	Case Type 7	Case Status 7	Case Date 7	Case Amount 7	Case Description 7
108	Case 108	Case Type 8	Case Status 8	Case Date 8	Case Amount 8	Case Description 8
109	Case 109	Case Type 9	Case Status 9	Case Date 9	Case Amount 9	Case Description 9
110	Case 110	Case Type 10	Case Status 10	Case Date 10	Case Amount 10	Case Description 10