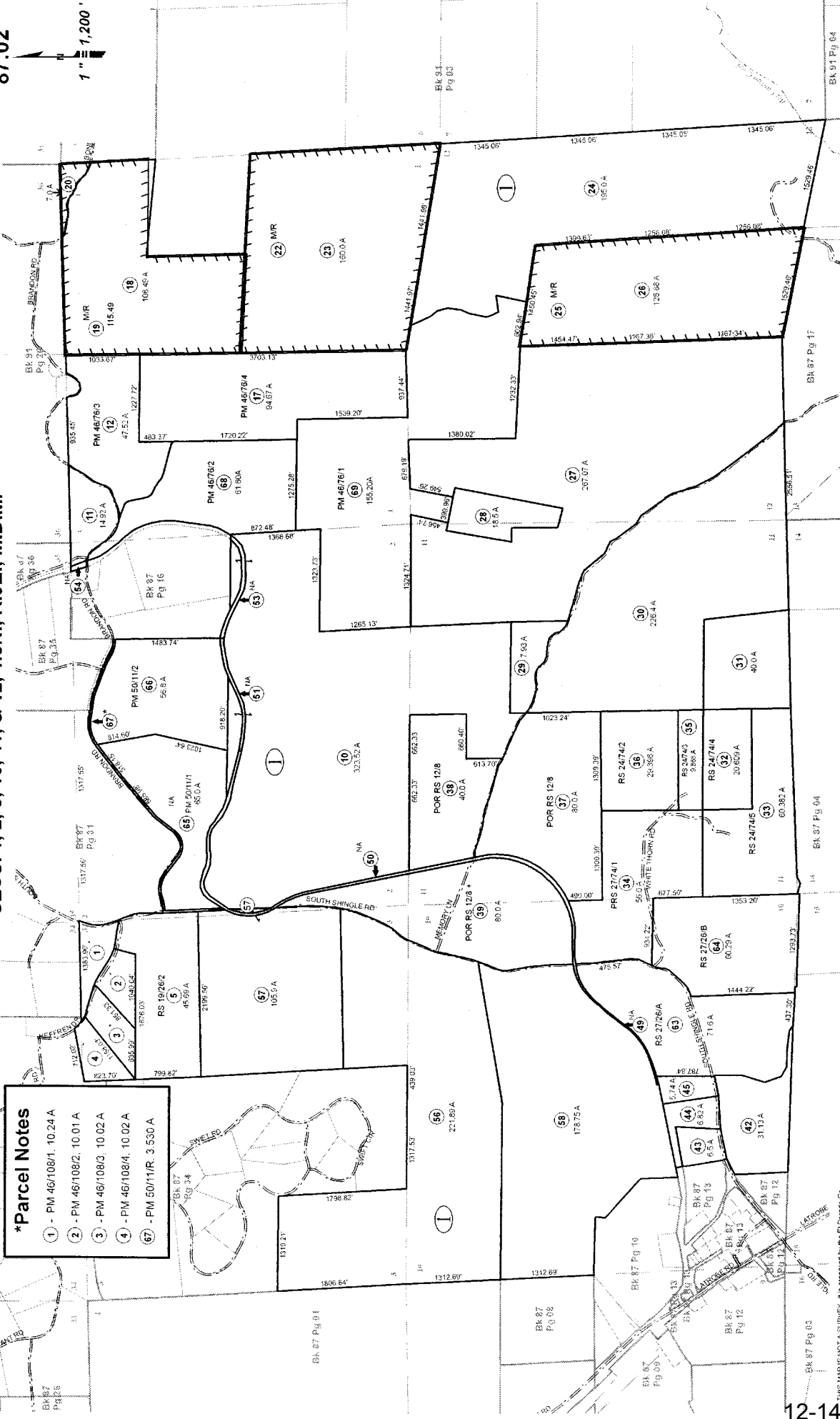


87:02

1" = 1,200'

SECS. 1, 2, 3, 10, 11, & 12, T.8N., R.9E., M.D.M.



***Parcel Notes**

- 1 - PM 46/108/1, 10.24 A
- 2 - PM 46/108/2, 10.01 A
- 3 - PM 46/108/3, 10.02 A
- 4 - PM 46/108/4, 10.02 A
- 67 - PM 50/11/R, 3.530 A

Assessor's Map Bk. 087, Pg. 02
County of El Dorado, CA

Rev. Jan. 2, 2009

Assessor's Map Please Show in Gray Text
Assessor's Block Numbers Shown in Ellipses
Assessor's Parcel Numbers Shown in Circles

Acreages Are Estimates

EXHIBIT A

THIS MAP IS NOT A SURVEY. It is prepared by the El Dorado County Assessor's Office for assessment purposes only. Area calculations and characteristics are not guaranteed. Users should verify items such as dimensions and acreage.