



# EL DORADO COUNTY

## DEPARTMENT OF TRANSPORTATION

<http://www.edcgov.us/DOT/>

**PLACERVILLE OFFICES:**

**MAIN OFFICE:**  
 2850 Fairlane Court, Placerville, CA 95667  
 (530) 621-5900 / (530) 626-0387 Fax

**CONSTRUCTION & MAINTENANCE:**  
 2441 Headington Road, Placerville, CA 95667  
 (530) 642-4909 / (530) 642-0508 Fax

**LAKE TAHOE OFFICES:**

**ENGINEERING:**  
 924 B Emerald Bay Road, South Lake Tahoe, CA 96150  
 (530) 573-7900 / (530) 541-7049 Fax

**MAINTENANCE:**  
 1121 Shakori Drive, South Lake Tahoe, CA 96150  
 (530) 573-3180 / (530) 577-8402 Fax

**DATE:** July 15, 2020

**TO:** All Prospective Bidders

**SUBJECT:** **Addendum No. 1**  
**Silver Springs Parkway Offsite (South Segment)**  
**Contract No. 4076, Project No. 78108**

Submit proposals for this work with the understanding and full consideration of this Addendum No. 1. The revisions declared in this Addendum are essential parts of the Contract.

ITEM NO.	LOCATION, PAGE, OR DRAWING NO.	DESCRIPTION OF CHANGE
1.01	Notice to Bidders Page N-1	Bidders are instructed to <b>replace</b> the bid opening date and time for Notice to Bidders page N-1 from July 16, 2020 to <b><u>July 20, 2020 at 2:00 PM</u></b>
1.02	Notice to Bidders Page N-2	Bidders are instructed to <b>delete</b> the "Delayed Notice to Proceed" section on page N-2 of the Notice to Bidders.
1.03	Page SP-25	Bidders are instructed to <b>remove</b> the section titled "Replace the 1 <sup>st</sup> sentence in the 3 <sup>rd</sup> paragraph of section 10-6 with:" in the special provisions.
1.04	Page SP-30	Bidders are instructed to replace Chart No.1 in the section labeled "Replace "Reserved" in section 12-4.02C(3)(k) with:" with the attached chart.
1.05	Page SP-36	Bidders are instructed to <b>replace</b> the section labeled "Add between the 1 <sup>st</sup> and 2 <sup>nd</sup> paragraphs of section 13-4.03G:" with:  You shall prepare a dewatering plan. Dewatering must comply with permit conditions.
1.06	Caltrans Standard Specifications	Bidders are instructed to <b>replace</b> section 13-4.04 with:  The department pays for the dewatering plan, and dewatering under job site management.

**Silver Springs Parkway Offsite (South Segment)**  
**Contract No. 4076, Project No. 78108**  
**Addendum No. 1**

County of El Dorado  
 Page 1 of 3

ITEM NO.	LOCATION, PAGE, OR DRAWING NO.	DESCRIPTION OF CHANGE
1.07	Page SP-37	Bidders are instructed to <b>delete</b> section 13-11 in the special provisions.
1.08	Page SP-48	<p>Bidders are instructed to <b>replace</b> section 15-1.03A in the special provisions with:</p> <p>The existing brick columns and gate at the driveway for APN 115-030-04 must be removed. The existing metal gate will be stored at a location designated by the Engineer on the property. The brick columns must be reconstructed per the executed right of way agreement to replace mail box and as shown on the plans. The gate must be reinstalled along with newly constructed brick columns and mailbox at Seller's new driveway entrance upon completion of the Project.</p>
1.09	SP-49	<p>Bidders are instructed to <b>replace</b> the 2nd paragraph of section 19-1.04 in the special provisions with:</p> <p>All removal of unsuitable material within the limits of existing pond including existing dam shall be paid for as pond over excavation and removal. Actual limits and depth, up to 2 feet, of unsuitable material encountered within pond shall be determined by project engineer in field after pond dam has been removed. Dewatering of pond shall be paid for as jobsite management.</p>
1.10	Caltrans Standard Specifications	<p>Bidders are instructed to <b>replace</b> the 3rd paragraph of section 19-6.02A with:</p> <p>Do not place borrow or excavation material having a sand equivalent value of less than 10 and R-value of less than 10 within 2.5 feet of finished grade.</p>
1.11	Caltrans Standard Specifications	<p>Bidders are instructed to <b>Add</b> to the end of section 19-6.03A:</p> <p>After clearing and grubbing and performing over excavation in existing ditch, drainage, and pond areas, and prior to embankment construction, scarify original ground to a depth of at least 8 inches, moisten the soil as necessary, and compact per the requirements of Standard Specifications 19-5.03B and 19-5.03C.</p>
1.12	Caltrans Standard Specifications	<p>Bidders are instructed to <b>Add</b> to the end of section 19-7.02A:</p> <p>Borrow material or excavation material used for embankment fill must have a plasticity index less than 12 and at least 20% passing the number 200 sieve. Provide</p>

ITEM NO.	LOCATION, PAGE, OR DRAWING NO.	DESCRIPTION OF CHANGE
		<p>the Engineer with test data that demonstrates that it complies with the contract documents prior to bringing any borrow material to the project site.</p> <p>Prior to placing fill in the existing drainage along the primary alignment of Silver Springs Parkway, remove any existing soft, loose, or deleterious materials up to one foot in depth.</p>
1.13	SP-72	Bidders are instructed to <b>delete</b> section 39-1.12C of the Special Provisions.
1.14	C-10 through C-15	Bidders are instructed to replace page C-10 through C-15 of the agreement with the attached pages C-10Rev through C-15Rev
1.15	P-3 through P-7	Bidders are instructed to replace page P-3 through P-7 of the proposal with the attached pages P-3Rev through P-8Rev
1.16	Plan Sheets	Bidders are instructed to <b>replace</b> plan sheets 11, 13, 17, 18, 20, 24, 25, 29, 33, and 34 with the attached sheets 11R, 13R, 17R, 18R, 20R, 24R, 25R, 29R, 33R, and 34R.

Indicate receipt of this Addendum No. 1 by filling in the number of this Addendum in the space provided on the signature page of the Proposal. Holders who have already mailed their Proposal can contact Brian Franklin at 530-621-5311 (email: [brian.franklin@edcgov.us](mailto:brian.franklin@edcgov.us)) to arrange return of their Proposal. Inform all suppliers and subcontractors as necessary. The Community Development Services, Department of Transportation is only sending this Addendum by posting on QuestCDN's website at: <https://www.questcdn.com/>. You must be a Contract Documents holder on the Quest Plan Holder Report and comply with the requirements of this Addendum No. 1 when submitting your bid.


**End of Addendum No. 1**

John Kahling  
Digitally signed by John Kahling  
 DN: cn=John Kahling, o=El Dorado  
 County Department of Transportation,  
 ou=Headington Engineering Unit,  
 email=john.kahling@edcgov.us, c=US  
 Date: 2020.07.15 10:22:09 -0700

7/15/2020

Recommended by:  
 John Kahling, Deputy Director  
 Headington Engineering Unit

Date

  
 Approved by:  
 Rafael Martinez, Director  
 Community Development Services  
 Department of Transportation

  
 Date

**Silver Springs Parkway Offsite (South Segment)  
 Contract No. 4076, Project No. 78108  
 Addendum No. 1**

County of El Dorado  
 Page 3 of 3

**Chart No. 1**

**Conventional Highway Lane Requirements**

County: El Dorado	Route/Direction: Bass Lake Road	Post Mile: N/A
-------------------	---------------------------------	----------------

Closure limits: Bass Lake Road

Hour	24	1	2	3	4	5	6	7	8	9	10	11	12	13	14	15	16	17	18	19	20	21	22	23	24
Mon-Thu											R	R	R	R	R	R	R	R	R						
Fri											R	R	R	R	R	R	R	R	R						
Sat											R	R	R	R	R	R	R								
Sun											R	R	R	R	R	R	R								

Legend:

R	Provide at least 1 through traffic lane not less than 11 feet in width for use by both directions of travel (Reversing Control)
	No work is allowed that reduces the existing roadway width available for the traffic.

REMARKS:

EXHIBIT A  
 CONTRACTOR'S BID AND BID PRICE SCHEDULE  
 SILVER SPRINGS PARKWAY TO BASS LAKE ROAD (SOUTH SEGMENT)  
 CONTRACT NO. 4076, CIP NO. 76108

ITEM NO.	ITEM CODE	ITEM DESCRIPTION	UNIT OF MEASURE	ESTIMATED QUANTITY	UNIT PRICE (IN FIGURES)	ITEM TOTAL (IN FIGURES)
1	072007A	TRENCH AND EXCAVATION SAFETY	LS	1		
2	80050	PROGRESS SCHEDULE (CRITICAL PATH METHOD)	LS	1		
3	100100	DEVELOP WATER SUPPLY	LS	1		
4	120090	CONSTRUCTION AREA SIGNS	LS	1		
5	120100	TRAFFIC CONTROL SYSTEM	LS	1		
6	120149	TEMPORARY PAVEMENT MARKING (PAINT)	SQFT	363		
7	120159	TEMPORARY TRAFFIC STRIPE (PAINT)	LF	10,588		
8	120120	TYPE III BARRICADE	EA	3		
9	120165A	SURFACE MOUNTED TUBULAR MARKER CHANNELIZER	EA	24		
10	120300	TEMPORARY PAVEMENT MARKER	EA	215		
11	128652	PORTABLE CHANGEABLE MESSAGE SIGN (LS)	LS	1		
12	129000	TEMPORARY RAILING (TYPE K)	LF	1,200		
13	129110	TEMPORARY CRASH CUSHION MODULE (ABSORB 350)	EA	4		
14	130100	JOB SITE MANAGEMENT	LS	1		
15	130300	PREPARE STORM WATER POLLUTION PREVENTION PLAN	LS	1		
16	130310	RAIN EVEN ACTION PLAN	EA	5		
17	130320	STORM WATER SAMPLING AND ANALYSIS DAY	EA	1		

Silver Springs Parkway Offsite (South Segment)  
 Contract No. 4076, CIP No 76108  
 June 23, 2020

County of El Dorado  
 Agreement  
 C-10Rev

ITEM NO.	ITEM CODE	ITEM DESCRIPTION	UNIT OF MEASURE	ESTIMATED QUANTITY	UNIT PRICE (IN FIGURES)	ITEM TOTAL (IN FIGURES)
18	130330	STORM WATER ANNUAL REPORT	EA	1		
19	130620	TEMPORARY DRAINAGE INLET PROTECTION	EA	24		
20	130640	TEMPORARY FIBER ROLL	LF	6,301		
21	130680	TEMPORARY SILT FENCE	LF	2,762		
22	130710	TEMPORARY CONSTRUCTION ENTRANCE	EA	2		
23	149001A	PREPARE ASBESTOS DUST MITIGATION PLAN	LS	1		
24	140003	ASBESTOS COMPLIANCE PLAN	LS	1		
25	150010A	RELOCATE GATE & BRICK COLUMNS (115-030-04)	LS	1		
26	150010B	RELOCATE GATE, OPENER & COLUMNS (115-030-03)	LS	1		
27	170103	CLEARING AND GRUBBING	LS	1		
28	170103A	REMOVE TREE	EA	197		
29	198010	IMPORTED BORROW	CY	28,300		
30	190101	F ROADWAY EXCAVATION	CY	3,200		
31	190101A	POND OVER EXCAVATION & REMOVAL	CY	1,300		
32	202026A	RELOCATE 4" WATER-MAIN BLOWOFF	EA	1		
33	202028A	RELOCATE IRRIGATION FACILITIES AND MAINTAIN LANDSCAPING	LS	1		
34	204000A	PLANT OLEANDERS, 5 GAL	EA	50		
35	204000B	BIORETENTION BASIN PLANTING	SF	2,160		
36	204096A	LANDSCAPE RECONSTRUCTION	SF	2,065		
37	208598A	2" PLASTIC PIPE (SCH 40) (IRRIG SUPPLY LINE)	LF	152		
38	208690A	4" PVC IRRIGATION & UTILITY SLEEVE, SCHEDULE 80	LF	416		

Silver Springs Parkway Offsite (South Segment)  
Contract No. 4076, CIP No 76108  
June 23, 2020

County of El Dorado  
Agreement  
C-11Rev

ITEM NO.	ITEM CODE	ITEM DESCRIPTION	UNIT OF MEASURE	ESTIMATE D QUANTITY	UNIT PRICE (IN FIGURES)	ITEM TOTAL (IN FIGURES)
39	208690B	8" PVC JOINT TRENCH SLEEVE	LF	140		
40	210270A	EC NETTING AND HYDROSEED (TYPE B)	SQFT	9,100		
41	210280A	EC BLANKET & HYDROSEED (TYPE B)	SQFT	46,228		
42	210430A	EROSION CONTORL MULCH AND HYDROSEED	SQFT	42,447		
43	260203	CLASS 2 AGGREGATE BASE	CY	6,135		
44	390132	HOT MIX ASPHALT (TYPE A)	TON	3,912		
45	390136A	MINOR HOT MIX ASPHALT (HMA DITCH)	TON	8		
46	394073	PLACE HOT MIX ASPHALT DIKE (TYPE A)	LF	209		
47	394076	PLACE HOT MIX ASPHALT DIKE (TYPE E)	LF	638		
48	398200	COLD PLANE ASPHALT CONCRETE PAVEMENT	SQFT	1,500		
49	475000	RETAINING WALL STEM (TYPE 6)	SQFT	583		
50	510502A	MINOR CONCRETE - RETAINING WALL FOOTING	CY	30		
51	510502B	MINOR CONCRETE - INLET STRUCTURE & TRASH RACK	EA	2		
52	510502C	HEADWALL, INLET APRON & TRASH RACK (STA 11+93.7)	EA	1		
53	510502D	MINOR CONCRETE SIDEWALK CURB DRAIN	EA	1		
54	510502E	MINOR CONCRETE - PIPE CAP	SF	1094		
55	641101	12" PLASTIC PIPE	LF	30		
56	641104	15" PLASTIC PIPE	LF	50		
57	641107	18" PLASTIC PIPE	LF	1,087		
58	641113	24" PLASTIC PIPE	LF	249		
59	641125	36" PLASTIC PIPE	LF	234		

Silver Springs Parkway Offsite (South Segment)  
Contract No. 4076, CIP No 76108  
June 23, 2020

County of El Dorado  
Agreement  
C-12Rev

ITEM NO.	ITEM CODE	ITEM DESCRIPTION	UNIT OF MEASURE	ESTIMATE D QUANTITY	UNIT PRICE (IN FIGURES)	ITEM TOTAL (IN FIGURES)
60	641128	42" PLASTIC PIPE	LF	970		
61	641131	48" PLASTIC PIPE	LF	357		
62	685000A	6" PERF. PLASTIC PIPE UNDERDRAIN & TRENCH	LF	749		
63	707117A	INLET - CALTRANS TYPE OCP	EA	4		
64	707117B	INLET - CALTRANS TYPE GCP	EA	2		
65	707117C	INLET - CALTRANS TYPE GO	EA	9		
66	707225	48" PRECAST CONCRETE PIPE MANHOLE	EA	1		
67	707233	60" PRECAST CONCRETE PIPE MANHOLE	EA	5		
68	707233A	60" SADDLE MANHOLE	EA	3		
69	705007	12" FLARED END SECTION (FES)	EA	1		
70	705009	15" FLARED END SECTION (FES)	EA	2		
71	702010	OUTLET ACCESS CONTROL GRATE	EA	1		
72	710132	REMOVE CULVERT (LF)	LF	168		
73	710122A	REMOVE DRAINAGE FACILITIES (149+50) INLET, PIPE & MANHOLE	LS	1		
74	710220	ADJUST EID VALVE/BLOW-OFF BOX TO GRADE	EA	3		
75	710210	ADJUST SEWER MANHOLE TO GRADE (EID SEWER)	EA	2		
76	721017A	ROCK INLET/OUTLET PROTECTION (RSP BACKING NO. 1, METHOD B)	CY	16		
77	721019A	F ROCK SLOPE PROTECTION (NO. 3, METHOD B)(ROCK LINED CHANNEL)	CY	100		
78	721028	F ROCK SLOPE PROTECTION NO. 2, METHOD B)	CY	371		

Silver Springs Parkway Offsite (South Segment)  
Contract No. 4076, CIP No 76108  
June 23, 2020

County of El Dorado  
Agreement  
C-13Rev



ITEM NO.	ITEM CODE	ITEM DESCRIPTION	UNIT OF MEASURE	ESTIMATE D QUANTITY	UNIT PRICE (IN FIGURE S)	ITEM TOTAL (IN FIGURE S)
79	730010	MINOR CONCRETE (CURB)	CY	66		
80	731502A	MINOR CONCRETE (MISCELLANEOUS CONSTRUCTION - PCC DITCH)	CY	24		
81	731504	MINOR CONCRETE (CURB AND GUTTER)	CY	222		
82	731530A	MINOR CONCRETE (TEXTURED PAVING)	CY	19		
83	731627	MINOR CONCRETE (CURB, SIDEWALK AND CURB RAMP)	CY	241		
84	780010A	DRIVEWAY CONDUITS	LS	1		
85	782120	RELOCATE MAILBOX (INCLUDING ACCESSORIES)	EA	3		
86	800051	FENCE (TYPE WM, METAL POST)	LF	2,301		
87	800100A	TEMPORARY FENCE (TYPE ESA)	EA	2,319		
88	800103	TEMPORARY FENCE (TYPE CL-6, CONTINGENT ITEM)	LF	100		
89	803020	REMOVE FENCE	LF	3,185		
90	803170A	RELOCATE TUBULAR STEEL FENCE	LF	430		
91	810120	REMOVE PAVEMENT MARKER	EA	141		
92	810230	PAVEMENT MARKER (RETROREFLECTIVE)	EA	351		
93	820112	MARKER (CULVERT)	EA	4		
94	820141	OBJECT MARKER (TYPE K-1)	EA	5		
95	820250	REMOVE ROADSIDE SIGN	EA	19		
96	820510	RESET ROADSIDE SIGN (ONE POST)	EA	2		
97	820840	ROADSIDE SIGN - ONE POST	EA	25		
98	832016	MIDWEST GUARDRAIL SYSTEM (7' POST)	LF	87		
99	839521	CABLE RAILING	LF	146		
100	839584A	MIDWEST GUARDRAIL IN-LINE TERMINAL SYSTEM	EA	2		
101	839750A	REMOVE BARRICADE	EA	3		

Silver Springs Parkway Offsite (South Segment)  
Contract No. 4076, CIP No 76108  
June 23, 2020

County of El Dorado  
Agreement  
C-14Rev

ITEM NO.	ITEM CODE	ITEM DESCRIPTION	UNIT OF MEASURE	ESTIMATE D QUANTITY	UNIT PRICE (IN FIGURES)	ITEM TOTAL (IN FIGURES)
102	840505	6" THERMOPLASTIC TRAFFIC STRIPE	LF	7,565		
103	840506	8" THERMOPLASTIC TRAFFIC STRIPE	LF	948		
104	840507	6" THERMOPLASTIC TRAFFIC STRIPE (BROKEN 8-4)	LF	268		
105	840508	8" THERMOPLASTIC TRAFFIC STRIPE (BROKEN 12-3)	LF	606		
106	840519	THERMOPLASTIC CROSSWALK AND PAVEMENT MARKING	SQFT	1,160		
107	840530	6" THERMOPLASTIC TRAFFIC STRIPE (BROKEN 17-7)	LF	100		
108	846020	REMOVE PAINTED TRAFFIC STRIPE	LF	11,178		
109	846020A	REMOVE TRAFFIC STRIPES	LF	62		
110	846025	REMOVE PAINTED PAVEMENT MARKING	SQFT	2,486		
111	930010A	BIORETENTION BASIN OUTFALL, MEDIA AND SUBDRAIN SYSTEM	LS	1		
112	999990	MOBILIZATION	LS	1		
<b>TOTAL</b>						

(F) Final Pay Quantity  
(P) Eligible for Partial Payment  
(LS) Lump Sum

**PROPOSAL PAY ITEMS AND BID PRICE SCHEDULE  
SILVER SPRINGS PARKWAY TO BASS LAKE ROAD  
(SOUTH SEGMENT)  
CONTRACT NO. 4076, CIP NO. 76108**

ITEM NO.	ITEM CODE	ITEM DESCRIPTION	UNIT OF MEASURE	ESTIMATED QUANTITY	UNIT PRICE (IN FIGURES)	ITEM TOTAL (IN FIGURES)
1	072007A	TRENCH AND EXCAVATION SAFETY	LS	1		
2	80050	PROGRESS SCHEDULE (CRITICAL PATH METHOD)	LS	1		
3	100100	DEVELOP WATER SUPPLY	LS	1		
4	120090	CONSTRUCTION AREA SIGNS	LS	1		
5	120100	TRAFFIC CONTROL SYSTEM	LS	1		
6	120149	TEMPORARY PAVEMENT MARKING (PAINT)	SQFT	363		
7	120159	TEMPORARY TRAFFIC STRIPE (PAINT)	LF	10,588		
8	120120	TYPE III BARRICADE	EA	3		
9	120165A	SURFACE MOUNTED TUBULAR MARKER CHANNELIZER	EA	24		
10	120300	TEMPORARY PAVEMENT MARKER	EA	215		
11	128652	PORTABLE CHANGEABLE MESSAGE SIGN (LS)	LS	1		
12	129000	TEMPORARY RAILING (TYPE K)	LF	1,200		
13	129110	TEMPORARY CRASH CUSHION MODULE (ABSORB 350)	EA	4		
14	130100	JOB SITE MANAGEMENT	LS	1		
15	130300	PREPARE STORM WATER POLLUTION PREVENTION PLAN	LS	1		
16	130310	RAIN EVEN ACTION PLAN	EA	5		
17	130320	STORM WATER SAMPLING AND ANALYSIS DAY	EA	1		
18	130330	STORM WATER ANNUAL REPORT	EA	1		
19	130620	TEMPORARY DRAINAGE INLET PROTECTION	EA	24		
20	130640	TEMPORARY FIBER ROLL	LF	6,301		

Silver Springs Parkway Offsite (South Segment)  
Contract No. 4076, CIP No. 76108  
June 23, 2020

County of El Dorado  
Proposal  
Page P-3REV

ITEM NO.	ITEM CODE	ITEM DESCRIPTION	UNIT OF MEASURE	ESTIMATED QUANTITY	UNIT PRICE (IN FIGURES)	ITEM TOTAL (IN FIGURES)
21	130680	TEMPORARY SILT FENCE	LF	2,762		
22	130710	TEMPORARY CONSTRUCTION ENTRANCE	EA	2		
23	149001A	PREPARE ASBESTOS DUST MITIGATION PLAN	LS	1		
24	140003	ASBESTOS COMPLIANCE PLAN	LS	1		
25	150010A	RELOCATE GATE & BRICK COLUMNS (115-030-04)	LS	1		
26	150010B	RELOCATE GATE, OPENER & COLUMNS (115-030-03)	LS	1		
27	170103	CLEARING AND GRUBBING	LS	1		
28	170103A	REMOVE TREE	EA	197		
29	198010	IMPORTED BORROW	CY	28,300		
30	190101	F ROADWAY EXCAVATION	CY	3,200		
31	190101A	POND OVER EXCAVATION & REMOVAL	CY	1,300		
32	202026A	RELOCATE 4" WATER-MAIN BLOWOFF	EA	1		
33	202028A	RELOCATE IRRIGATION FACILITIES AND MAINTAIN LANDSCAPING	LS	1		
34	204000A	PLANT OLEANDERS, 5 GAL	EA	50		
35	204000B	BIORETENTION BASIN PLANTING	SF	2,160		
36	204096A	LANDSCAPE RECONSTRUCTION	SF	2,065		
37	208598A	2" PLASTIC PIPE (SCH 40) (IRRIG SUPPLY LINE)	LF	152		
38	208690A	4" PVC IRRIGATION & UTILITY SLEEVE, SCHEDULE 80	LF	416		
39	208690B	8" PVC JOINT TRENCH SLEEVE	LF	140		
40	210270A	EC NETTING AND HYDROSEED (TYPE B)	SQFT	9,100		
41	210280A	EC BLANKET & HYDROSEED (TYPE B)	SQFT	46,228		
42	210430A	EROSION CONTROL MULCH AND HYDROSEED	SQFT	42,447		

Silver Springs Parkway Offsite (South Segment)  
Contract No. 4076, CIP No. 76108  
June 23, 2020

County of El Dorado  
**Proposal**  
Page P-4REV

ITEM NO.	ITEM CODE	ITEM DESCRIPTION	UNIT OF MEASURE	ESTIMATED QUANTITY	UNIT PRICE (IN FIGURES)	ITEM TOTAL (IN FIGURES)
43	260203	CLASS 2 AGGREGATE BASE	CY	6,135		
44	390132	HOT MIX ASPHALT (TYPE A)	TON	3,912		
45	390136A	MINOR HOT MIX ASPHALT (HMA DITCH)	TON	8		
46	394073	PLACE HOT MIX ASPHALT DIKE (TYPE A)	LF	209		
47	394076	PLACE HOT MIX ASPHALT DIKE (TYPE E)	LF	638		
48	398200	COLD PLANE ASPHALT CONCRETE PAVEMENT	SQFT	1,500		
49	475000	RETAINING WALL STEM (TYPE 6)	SQFT	583		
50	510502A	MINOR CONCRETE - RETAINING WALL FOOTING	CY	30		
51	510502B	MINOR CONCRETE - INLET STRUCTURE & TRASH RACK	EA	2		
52	510502C	HEADWALL, INLET APRON & TRASH RACK (STA 11+93.7)	EA	1		
53	510502D	MINOR CONCRETE SIDEWALK CURB DRAIN	EA	1		
54	510502E	MINOR CONCRETE - PIPE CAP	SF	1094		
55	641101	12" PLASTIC PIPE	LF	30		
56	641104	15" PLASTIC PIPE	LF	50		
57	641107	18" PLASTIC PIPE	LF	1,087		
58	641113	24" PLASTIC PIPE	LF	249		
59	641125	36" PLASTIC PIPE	LF	234		
60	641128	42" PLASTIC PIPE	LF	970		
61	641131	48" PLASTIC PIPE	LF	357		
62	685000A	6" PERF. PLASTIC PIPE UNDERDRAIN & TRENCH	LF	749		
63	707117A	INLET - CALTRANS TYPE OCP	EA	4		
64	707117B	INLET - CALTRANS TYPE GCP	EA	2		
65	707117C	INLET - CALTRANS TYPE GO	EA	9		

Silver Springs Parkway Offsite (South Segment)  
Contract No. 4076, CIP No. 76108  
June 23, 2020

County of El Dorado  
**Proposal**  
Page P-5REV

ITEM NO.	ITEM CODE	ITEM DESCRIPTION	UNIT OF MEASURE	ESTIMATED QUANTITY	UNIT PRICE (IN FIGURES)	ITEM TOTAL (IN FIGURES)
66	707225	48" PRECAST CONCRETE PIPE MANHOLE	EA	1		
67	707233	60" PRECAST CONCRETE PIPE MANHOLE	EA	5		
68	707233A	60" SADDLE MANHOLE	EA	3		
69	705007	12" FLARED END SECTION (FES)	EA	1		
70	705009	15" FLARED END SECTION (FES)	EA	2		
71	702010	OUTLET ACCESS CONTROL GRATE	EA	1		
72	710132	REMOVE CULVERT (LF)	LF	168		
73	710122A	REMOVE DRAINAGE FACILITIES (149+50) INLET, PIPE & MANHOLE	LS	1		
74	710220	ADJUST EID VALVE/BLOW-OFF BOX TO GRADE	EA	3		
75	710210	ADJUST SEWER MANHOLE TO GRADE (EID SEWER)	EA	2		
76	721017A	ROCK INLET/OUTLET PROTECTION (RSP BACKING NO. 1, METHOD B)	CY	16		
77	721019A	F ROCK SLOPE PROTECTION (NO. 3, METHOD B)(ROCK LINED CHANNEL)	CY	100		
78	721028	F ROCK SLOPE PROTECTION NO. 2, METHOD B)	CY	371		
79	730010	MINOR CONCRETE (CURB)	CY	66		
80	731502A	MINOR CONCRETE (MISCELLANEOUS CONSTRUCTION - PCC DITCH)	CY	24		
81	731504	MINOR CONCRETE (CURB AND GUTTER)	CY	222		
82	731530A	MINOR CONCRETE (TEXTURED PAVING)	CY	19		
83	731627	MINOR CONCRETE (CURB, SIDEWALK AND CURB RAMP)	CY	241		
84	780010A	DRIVEWAY CONDUITS	LS	1		

Silver Springs Parkway Offsite (South Segment)  
Contract No. 4076, CIP No. 76108  
June 23, 2020

County of El Dorado  
Proposal  
Page P-6REV

ITEM NO.	ITEM CODE	ITEM DESCRIPTION	UNIT OF MEASURE	ESTIMATED QUANTITY	UNIT PRICE (IN FIGURES)	ITEM TOTAL (IN FIGURES)
85	782120	RELOCATE MAILBOX (INCLUDING ACCESSORIES)	EA	3		
86	800051	FENCE (TYPE WM, METAL POST)	LF	2,301		
87	800100A	TEMPORARY FENCE (TYPE ESA)	EA	2,319		
88	800103	TEMPORARY FENCE (TYPE CL-6, CONTINGENT ITEM)	LF	100		
89	803020	REMOVE FENCE	LF	3,185		
90	803170A	RELOCATE TUBULAR STEEL FENCE	LF	430		
91	810120	REMOVE PAVEMENT MARKER	EA	141		
92	810230	PAVEMENT MARKER (RETROREFLECTIVE)	EA	351		
93	820112	MARKER (CULVERT)	EA	4		
94	820141	OBJECT MARKER (TYPE K-1)	EA	5		
95	820250	REMOVE ROADSIDE SIGN	EA	19		
96	820510	RESET ROADSIDE SIGN (ONE POST)	EA	2		
97	820840	ROADSIDE SIGN - ONE POST	EA	25		
98	832016	MIDWEST GUARDRAIL SYSTEM (7' POST)	LF	87		
99	839521	CABLE RAILING	LF	146		
100	839584A	MIDWEST GUARDRAIL IN-LINE TERMINAL SYSTEM	EA	2		
101	839750A	REMOVE BARRICADE	EA	3		
102	840505	6" THERMOPLASTIC TRAFFIC STRIPE	LF	7,565		
103	840506	8" THERMOPLASTIC TRAFFIC STRIPE	LF	948		
104	840507	6" THERMOPLASTIC TRAFFIC STRIPE (BROKEN 8-4)	LF	268		
105	840508	8" THERMOPLASTIC TRAFFIC STRIPE (BROKEN 12-3)	LF	606		
106	840519	THERMOPLASTIC CROSSWALK AND PAVEMENT MARKING	SQFT	1,160		

Silver Springs Parkway Offsite (South Segment)  
Contract No. 4076, CIP No. 76108  
June 23, 2020

County of El Dorado  
Proposal  
Page P-7REV

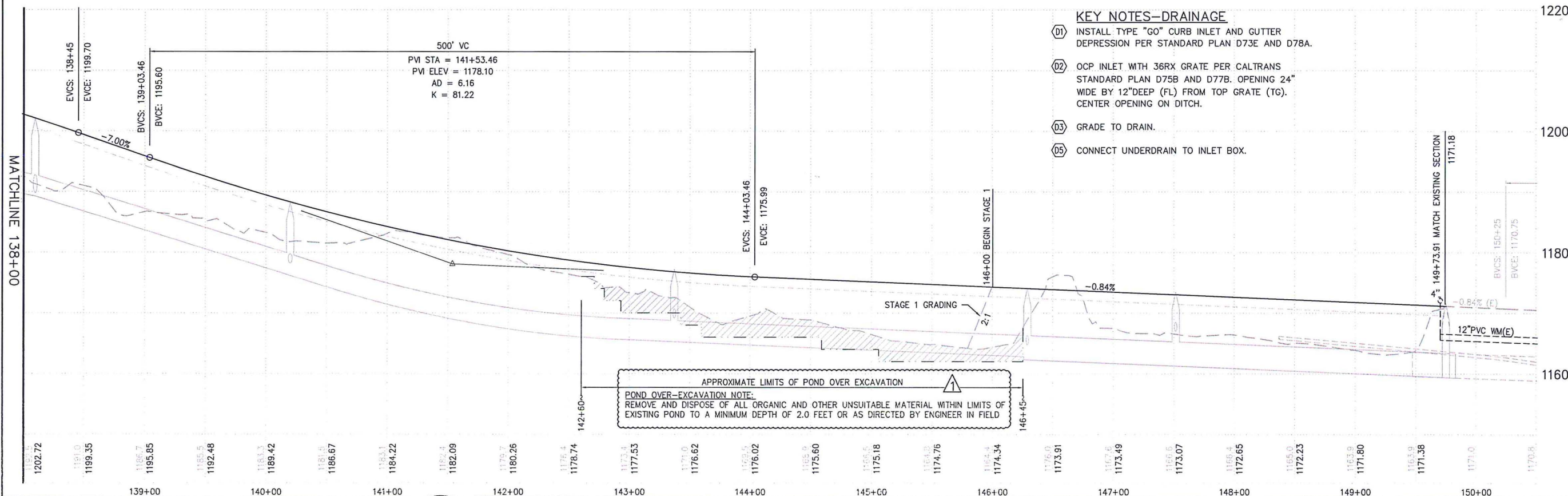
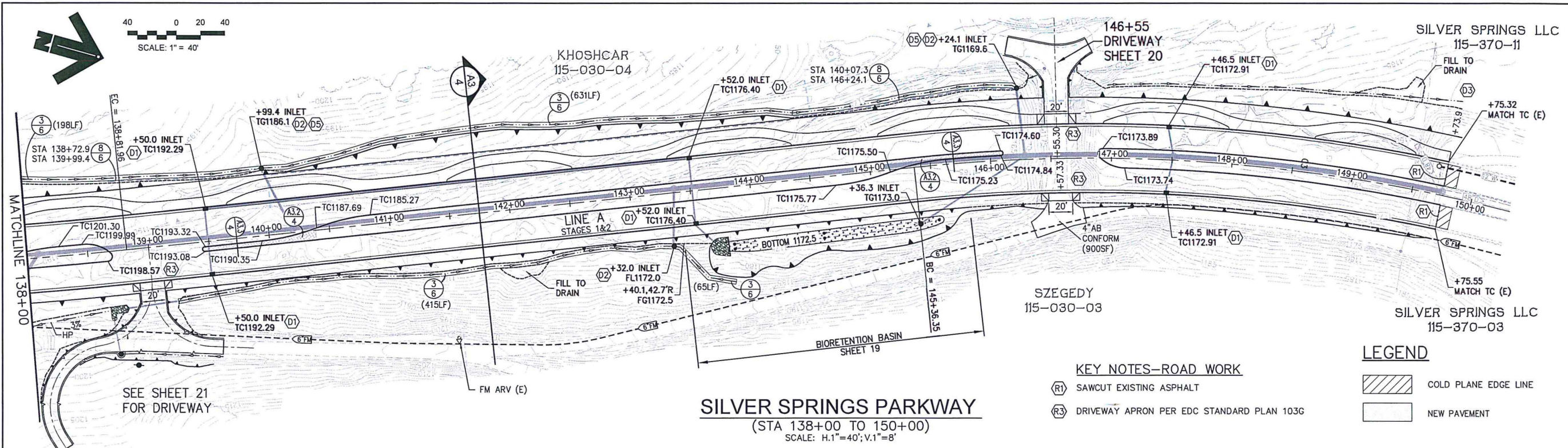
ITEM NO.	ITEM CODE	ITEM DESCRIPTION	UNIT OF MEASURE	ESTIMATED QUANTITY	UNIT PRICE (IN FIGURES)	ITEM TOTAL (IN FIGURES)
107	840530	6" THERMOPLASTIC TRAFFIC STRIPE (BROKEN 17-7)	LF	100		
108	846020	REMOVE PAINTED TRAFFIC STRIPE	LF	11,178		
109	846020A	REMOVE TRAFFIC STRIPES	LF	62		
110	846025	REMOVE PAINTED PAVEMENT MARKING	SQFT	2,486		
111	930010A	BIORETENTION BASIN OUTFALL, MEDIA AND SUBDRAIN SYSTEM	LS	1		
112	999990	MOBILIZATION	LS	1		
<b>TOTAL</b>						

(F) Final Pay Quantity  
(P) Eligible for Partial Payment  
(LS) Lump Sum

**(NOTICE: Bidders failure to execute the questionnaires and statements contained in this proposal as required by applicable laws and regulations, or the determinations by County of El Dorado based upon those questionnaires and statements, may prohibit award of the subject Contract to the bidder.)**



File: K:\proj\44XX\1480\DWG\SILVER SPRINGS 76108\105% ADD#\SET\Plan Sheets\10-11R\_CDR\_PP\_A.dwg Jul 13, 2020 - 12:12pm kmayo  
 ORIGINAL SCALE IS IN INCHES  
 FOR REDUCED PLANTS



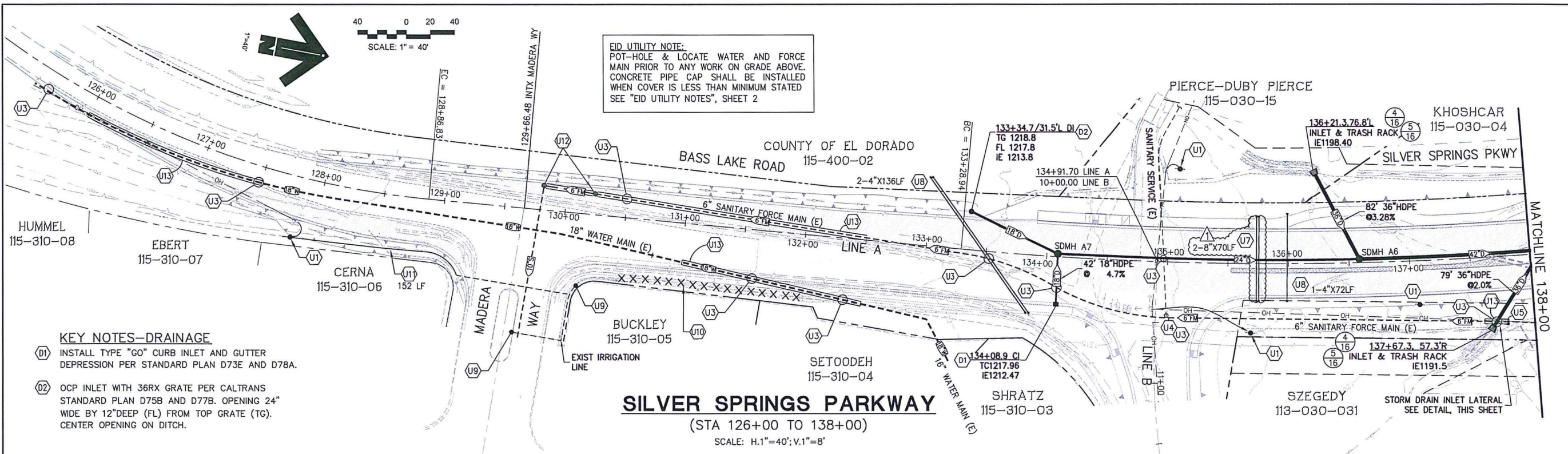
<b>REVISION</b> NUMBER DATE DESCRIPTION FDC BY			PREPARED UNDER THE SUPERVISION OF:  REGISTERED CIVIL ENGINEER 06/01/20 DATE:	DESIGNED: KM CHECKED: P.J.L. ROAD NUMBER:	DRAWN: EQW/SAF DATE: 06/01/20		<b>COUNTY OF EL DORADO</b> <b>DEPARTMENT OF TRANSPORTATION</b>	<b>SILVER SPRINGS PARKWAY OFFSITE</b> <b>(SOUTH SEGMENT)</b> <b>PLAN &amp; PROFILE, LINE A</b> STA 138+00.00 TO STA 150+00.00	SHEET <b>11R</b> OF <b>34</b> W.D. No. <b>76108</b>
REVISION NUMBER DATE DESCRIPTION FDC BY			DATE:	ROAD NUMBER:					

File: K:\proj\144X\1480\DWG\SILVER SPRINGS 76108\1055 ADD#1 SET\Plan Sheets\13R-14\_UTIL\_PP\_A.dwg Jul 13, 2020 - 12:16pm kmayo

ORIGINAL SCALE IS IN INCHES

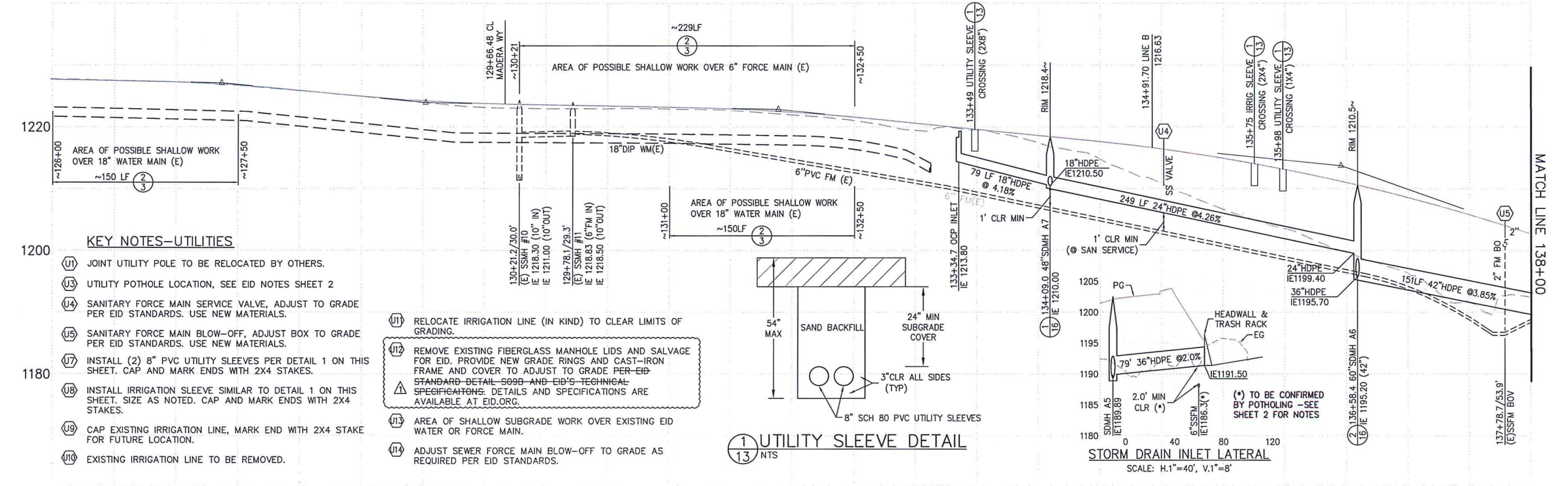
2  
1  
0

FOR REDUCED PLANS



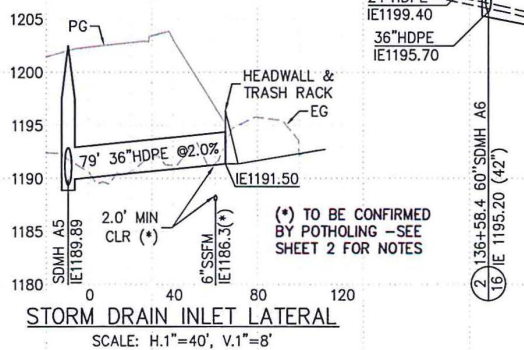
**EID UTILITY NOTE:**  
 POT-HOLE & LOCATE WATER AND FORCE MAIN PRIOR TO ANY WORK ON GRADE ABOVE. CONCRETE PIPE CAP SHALL BE INSTALLED WHEN COVER IS LESS THAN MINIMUM STATED SEE "EID UTILITY NOTES", SHEET 2

- KEY NOTES--DRAINAGE**
- (D1) INSTALL TYPE "GO" CURB INLET AND GUTTER DEPRESSION PER STANDARD PLAN D73E AND D78A.
  - (D2) OCP INLET WITH 36RX GRATE PER CALTRANS STANDARD PLAN D75B AND D77B. OPENING 24" WIDE BY 12" DEEP (FL) FROM TOP GRATE (TG). CENTER OPENING ON DITCH.



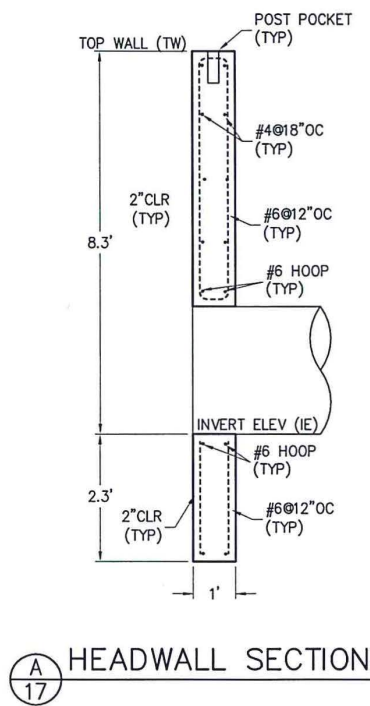
- KEY NOTES--UTILITIES**
- (U1) JOINT UTILITY POLE TO BE RELOCATED BY OTHERS.
  - (U3) UTILITY POTHOLE LOCATION, SEE EID NOTES SHEET 2
  - (U4) SANITARY FORCE MAIN SERVICE VALVE, ADJUST TO GRADE PER EID STANDARDS. USE NEW MATERIALS.
  - (U5) SANITARY FORCE MAIN BLOW-OFF, ADJUST BOX TO GRADE PER EID STANDARDS. USE NEW MATERIALS.
  - (U7) INSTALL (2) 8" PVC UTILITY SLEEVES PER DETAIL 1 ON THIS SHEET. CAP AND MARK ENDS WITH 2X4 STAKES.
  - (U8) INSTALL IRRIGATION SLEEVE SIMILAR TO DETAIL 1 ON THIS SHEET. SIZE AS NOTED. CAP AND MARK ENDS WITH 2X4 STAKES.
  - (U9) CAP EXISTING IRRIGATION LINE, MARK END WITH 2X4 STAKE FOR FUTURE LOCATION.
  - (U10) EXISTING IRRIGATION LINE TO BE REMOVED.

- (U11) RELOCATE IRRIGATION LINE (IN KIND) TO CLEAR LIMITS OF GRADING.
- (U12) REMOVE EXISTING FIBERGLASS MANHOLE LIDS AND SALVAGE FOR EID. PROVIDE NEW GRADE RINGS AND CAST-IRON FRAME AND COVER TO ADJUST TO GRADE PER EID STANDARD DETAIL S09B AND EID'S TECHNICAL SPECIFICATIONS. DETAILS AND SPECIFICATIONS ARE AVAILABLE AT EID.ORG.
- (U13) AREA OF SHALLOW SUBGRADE WORK OVER EXISTING EID WATER OR FORCE MAIN.
- (U14) ADJUST SEWER FORCE MAIN BLOW-OFF TO GRADE AS REQUIRED PER EID STANDARDS.

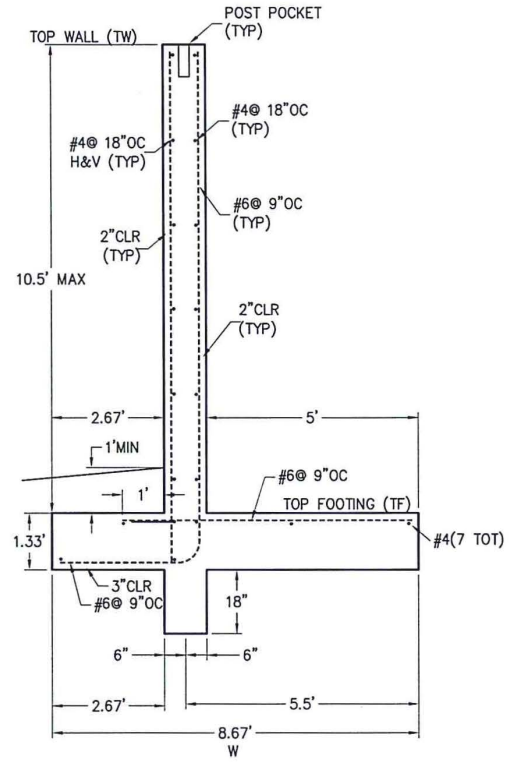


<p>REVISION</p> <table border="1" style="width: 100%; border-collapse: collapse;"> <tr> <th>NUMBER</th> <th>DATE</th> <th>ADDENDUM #1</th> <th>DESCRIPTION</th> <th>EDC BY</th> </tr> <tr> <td> </td> <td> </td> <td> </td> <td> </td> <td> </td> </tr> </table>	NUMBER	DATE	ADDENDUM #1	DESCRIPTION	EDC BY							<p>PREPARED UNDER THE SUPERVISION OF:</p> <p><i>Kevin Mayel</i></p> <p>REGISTERED CIVIL ENGINEER 06/01/20</p>		<p><b>COUNTY OF EL DORADO</b>  <b>DEPARTMENT OF TRANSPORTATION</b></p>	<p><b>SILVER SPRINGS PARKWAY OFFSITE</b>  <b>(SOUTH SEGMENT)</b>          UTILITY PLAN          STA 126+00.00 TO 138+00.00</p>	<p>SHEET  <b>13R</b>          OF 34          R.O. No. <b>76108</b></p>
NUMBER	DATE	ADDENDUM #1	DESCRIPTION	EDC BY												

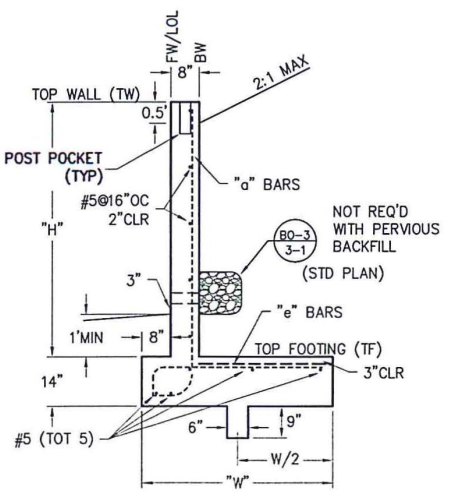
File: K:\proj\144X\1480\DWG\SILVER SPRINGS 76108\05% ADD\1 SET\Plan Sheets\17R-18R\_RTW\_DTL.dwg Jul 13, 2020 - 12:18pm kmayo  
 ORIGINAL SCALE IS IN INCHES  
 2  
 1  
 0  
 FOR REDUCED PLANS



**A**  
17 HEADWALL SECTION



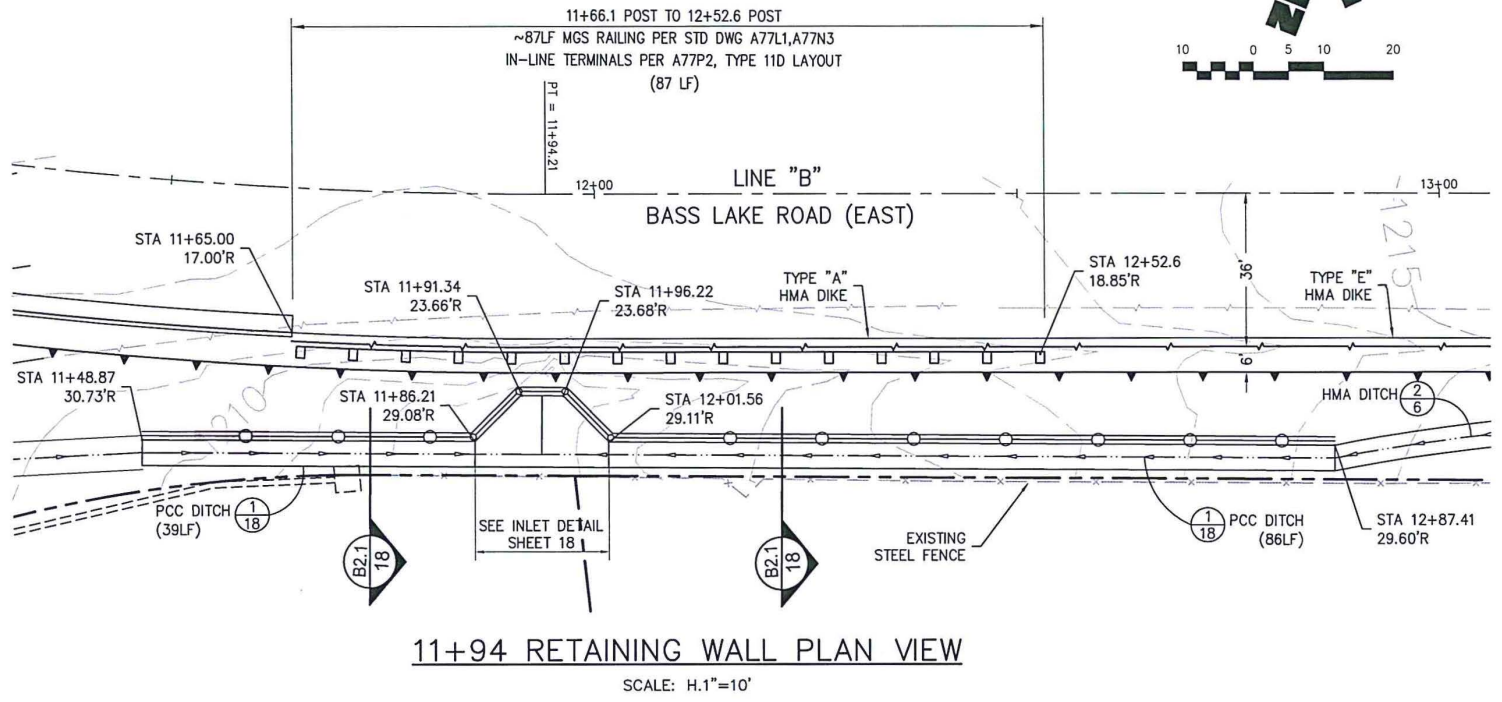
**B**  
17 TYPICAL SECTION WING WALL



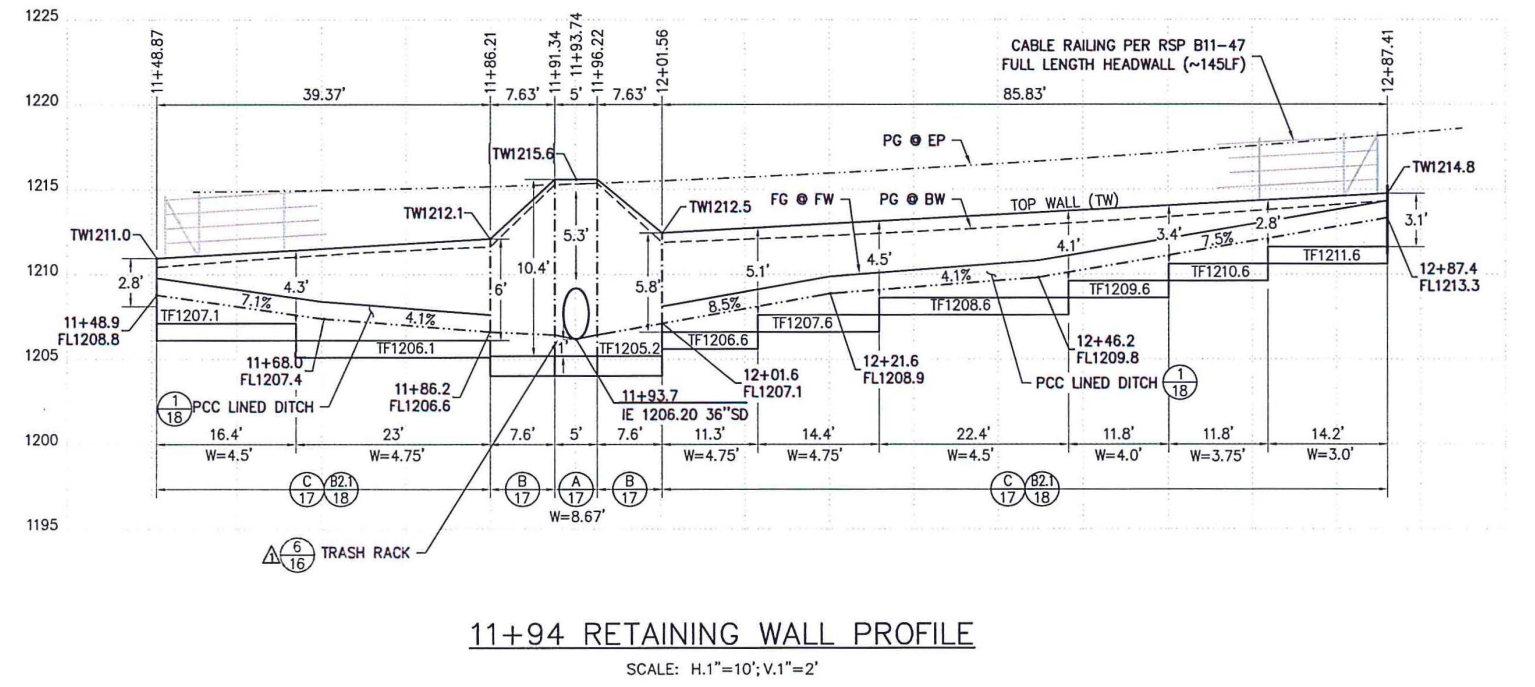
**C**  
17 TYPICAL SECTION RETAINING WALL

NOTE: REFER TO STANDARD PLAN B3-7A FOR ALL OTHER DETAILS NOT SHOWN

TYPE 6B WALL- TABLE OF REINFORCING STEEL, DIMENSIONS AND DATA	DESIGN H	3'-4"	4'-0"	4'-8"	5'-4"	6'-0"
W	3'-0"	3'-9"	4'-0"	4'-6"	4'-9"	
@ BARS	#5 @ 16	#5 @ 16	#5 @ 16	#5 @ 16	#5 @ 16	#5 @ 16
@ BARS	#5 @ 16	#5 @ 16	#5 @ 16	#5 @ 16	#5 @ 16	#5 @ 16
Ser: B', q <sub>o</sub>	2.6, 0.4	3.4, 0.4	2.7, 0.8	3.1, 0.8	3.2, 1.0	
Str: B', q <sub>o</sub>	2.6, 0.8	3.3, 0.9	1.7, 1.6	2.1, 1.6	2.0, 1.8	
Ext: B', q <sub>o</sub>	1.5, 1.1	2.0, 1.1	2.0, 1.4	2.2, 1.5	2.1, 1.9	



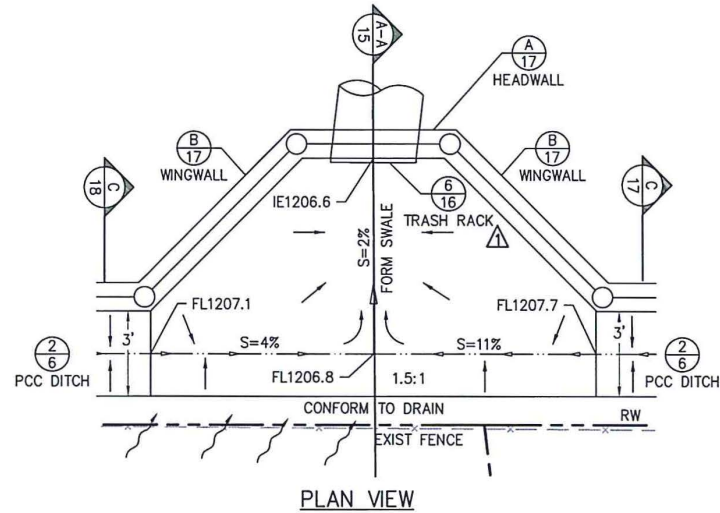
**11+94 RETAINING WALL PLAN VIEW**  
SCALE: H.1"=10'



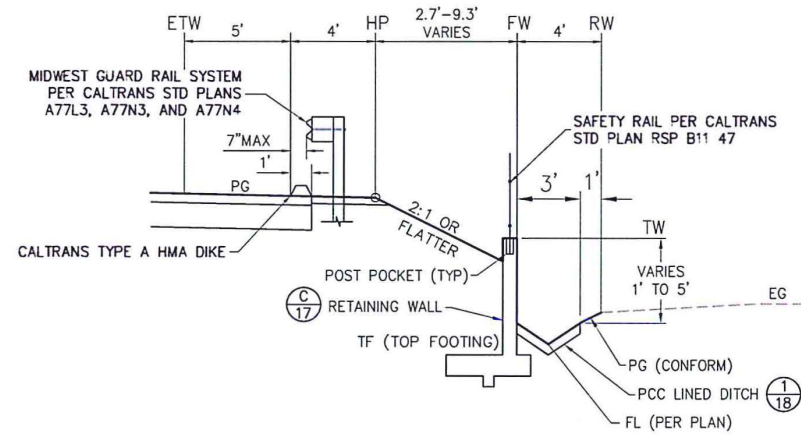
**11+94 RETAINING WALL PROFILE**  
SCALE: H.1"=10'; V.1"=2'

REVISION NUMBER DATE ADDENDUM #1 DESCRIPTION FDC BY	DESIGNED: KM CHECKED: PUL ROAD NUMBER:	DRAWN: EQW/SAF DATE: 06/01/20	PREPARED UNDER THE SUPERVISION OF:  Kevin Meyel REGISTERED CIVIL ENGINEER 06/01/20 DATE:	COUNTY OF EL DORADO DEPARTMENT OF TRANSPORTATION	SILVER SPRINGS PARKWAY OFFSITE (SOUTH SEGMENT) RETAINING WALL PLAN & PROFILE	SHEET 17R OF 34 W.O. No. 76108
--	--	----------------------------------	---	---	--	---

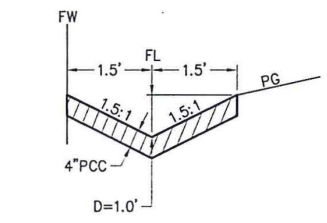
File: K:\pro\144\1480\DWG\SILVER SPRINGS 76105\055 ADD#1 SET\Plan Sheets\17R-18R\_RTV DTL.dwg Jul 13, 2020 - 12:18pm kmajo  
 ORIGINAL SCALE IS IN INCHES  
 FOR REDUCED PLANS



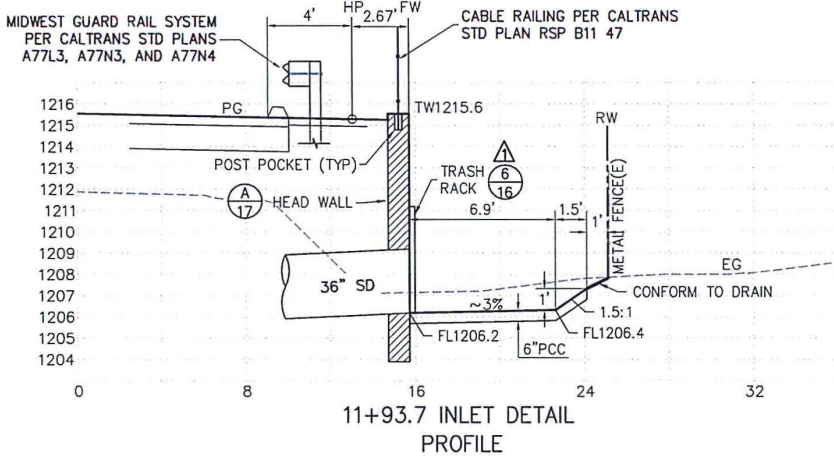
**11+93.7 INLET DETAIL**  
NO SCALE



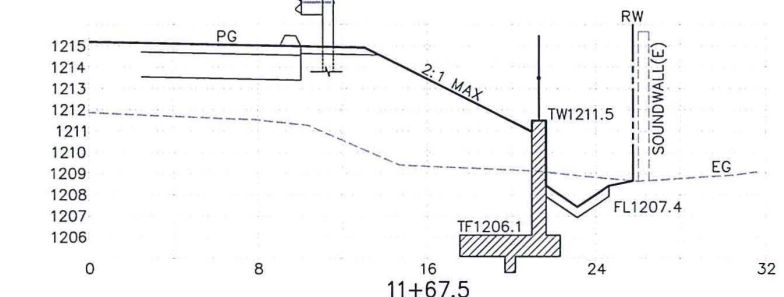
**2.1 BASS LAKE ROAD EAST**  
LINE "B" RIGHT  
STA 11+48.87 TO 12+87.41



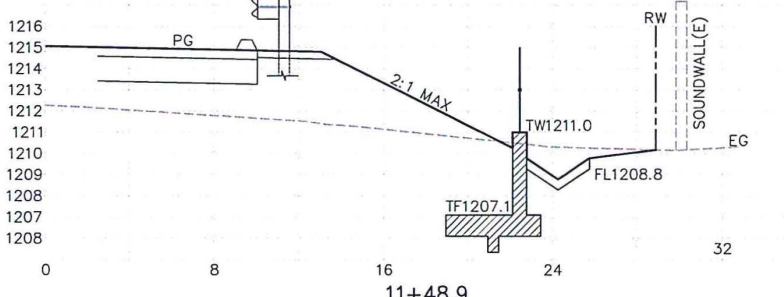
**1 PCC LINED DITCH**  
AT RETAINING WALL  
NTS



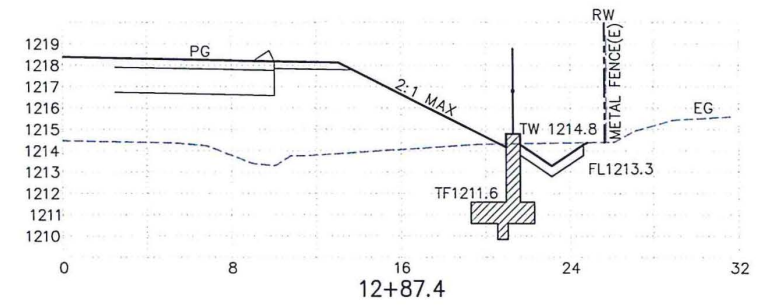
**11+93.7 INLET DETAIL PROFILE**



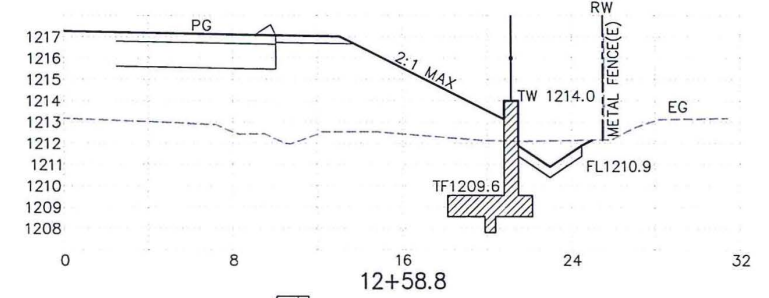
**11+67.5**



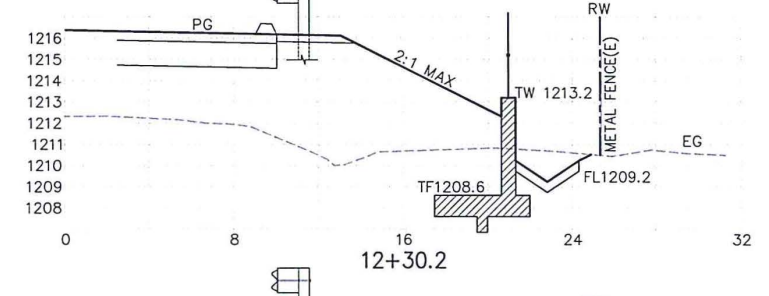
**11+48.9**  
SCALE: V. 1"=4'; H. 1"=4'



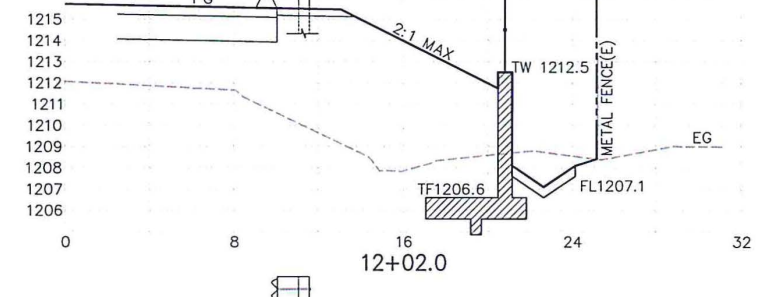
**12+87.4**



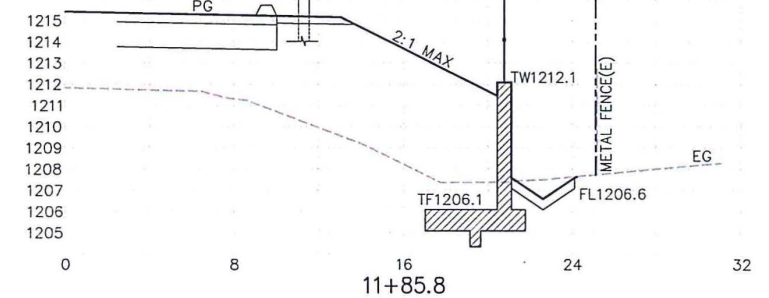
**12+58.8**



**12+30.2**



**12+02.0**



**11+85.8**

REVISION	NUMBER	DATE	ADDENDUM #1	DESCRIPTION	FDC BY



PREPARED UNDER THE SUPERVISION OF:  
*Kevin Meyel*  
 REGISTERED CIVIL ENGINEER 06/01/20  
 DATE:

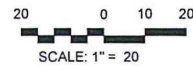
DESIGNED: KM  
 DRAWN: EQW/SAF  
 CHECKED: PJL  
 DATE: 06/01/20  
 ROAD NUMBER:



COUNTY OF EL DORADO  
 DEPARTMENT OF TRANSPORTATION

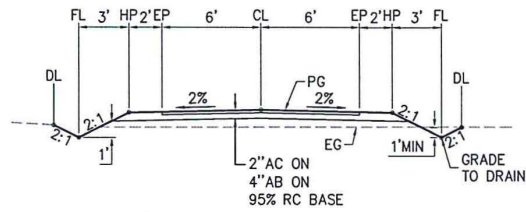
SILVER SPRINGS PARKWAY OFFSITE  
 (SOUTH SEGMENT)  
 RETAINING WALL SECTIONS & DETAILS

SHEET  
**18R**  
 OF 34  
 W.O. No. **76108**

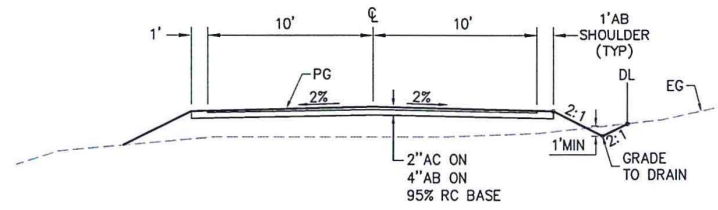


LINE TABLE		
LINE	BEARING	DISTANCE
L1	S81°37'32"W	90.50'
L2	N71°36'09"W	35.37'

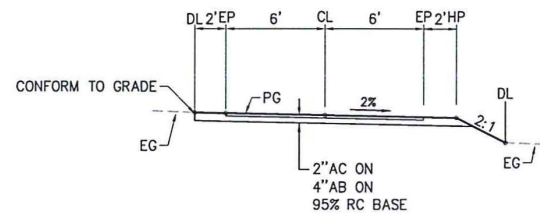
CURVE TABLE			
CURVE	LENGTH	DELTA	RADIUS
C1	23.36'	26°46'19.76"	50.00'



**(A) 12' ACCESS DRIVEWAY**  
NTS



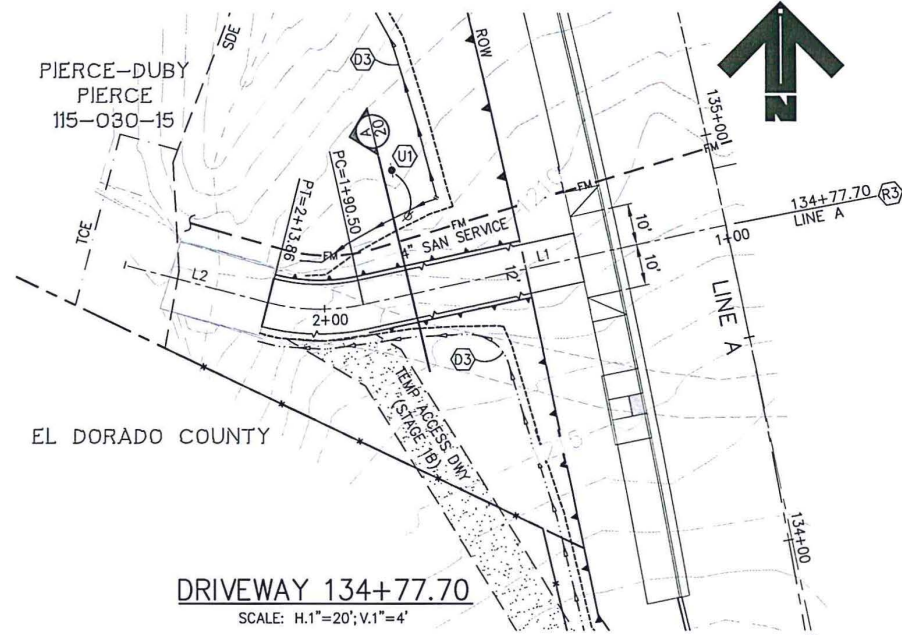
**(B) TYPICAL 20' ACCESS DRIVEWAY**  
NTS



**(C) 12' ACCESS DRIVEWAY**  
NTS

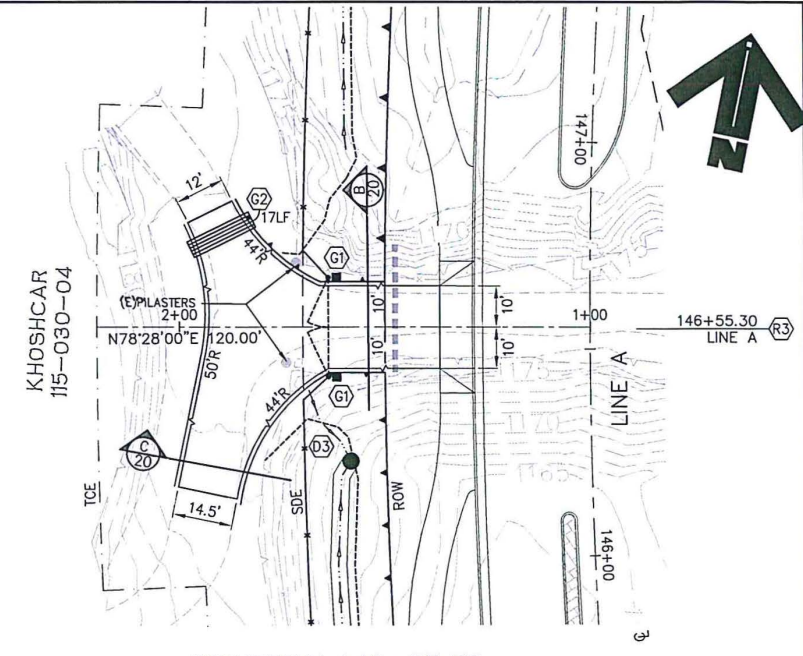
**STEEL GATE RELOCATION (APN 115-030-04):**

- CONTRACTOR SHALL SALVAGE EXISTING STEEL GATE PANELS AND RETURN TO PROPERTY OWNER. PROPERTY OWNER SHALL BE RESPONSIBLE TO REINSTALL ACTUAL GATE PANELS.
- BRICK FACED COLUMNS SHALL BE RECONSTRUCTED IN-KIND. ORNAMENTAL TOPS MAY BE REUSED WHERE POSSIBLE.
- 6" DIAMETER STEEL GATE POSTS SHALL BE RECONSTRUCTED IN KIND. HINGES AND POST SPACING SHALL MATCH EXISTING PANELS FOR PROPER FUNCTION.
- ALL WORK WILL BE COORDINATED BY ENGINEER IN FIELD WITH PROPERTY OWNER.



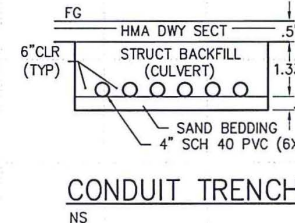
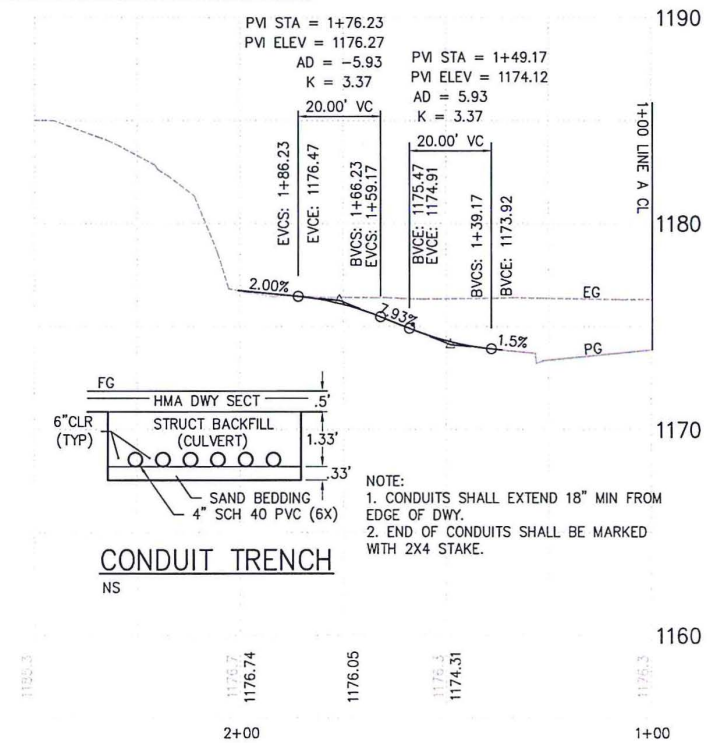
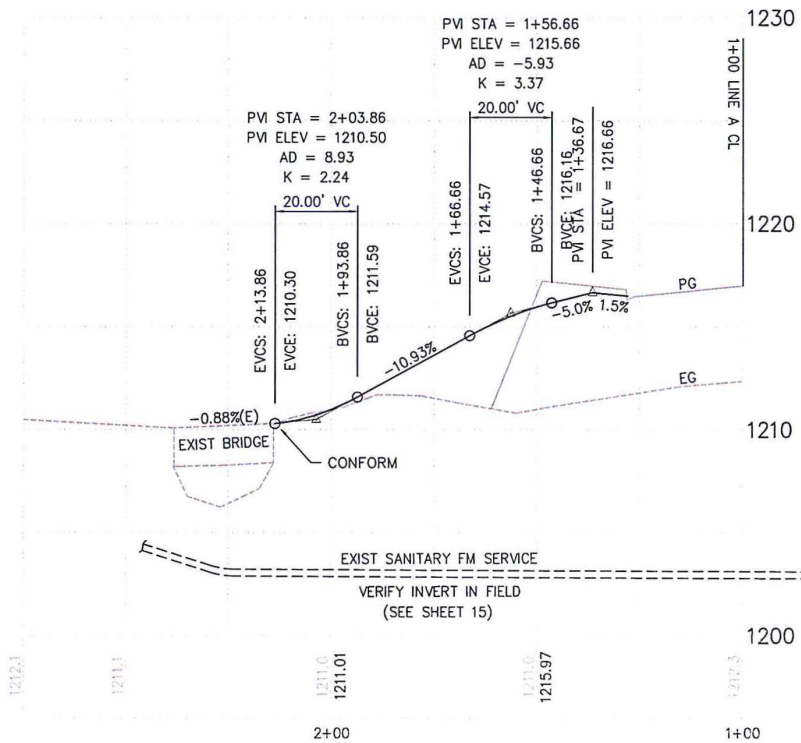
**KEY NOTES-ROAD WORK**

- (R3) DRIVEWAY APRON PER EDC STANDARD PLAN 103G
- (D3) GRADE TO DRAIN.
- (U1) JOINT UTILITY POLE TO BE RELOCATED BY OTHERS.



**KEY NOTES-DRIVEWAYS**

- (G1) RELOCATE AND RECONSTRUCT EXISTING STEEL GATE POSTS AND BRICK COLUMNS IN-KIND. SEE NOTE THIS SHEET.
- (G2) INSTALL CONDUITS PER DETAIL THIS SHEET.



- NOTE:
- CONDUITS SHALL EXTEND 18" MIN FROM EDGE OF DWY.
  - END OF CONDUITS SHALL BE MARKED WITH 2X4 STAKE.

FILE: K:\PROJ\14XX\1480\DWG\SILVER SPRINGS 76105\05% ADD\1 SET\Plan Sheets\20R-21\_DWY\_PP.dwg Jul 13, 2020 - 12:09pm kmjyo  
ORIGINAL SCALE IS IN INCHES  
FOR REDUCED PLANS

REVISION	NUMBER	DATE	ADDENDUM #1	DESCRIPTION	BY
	1	7/06/20			



PREPARED UNDER THE SUPERVISION OF:  
*Kevin Mayel*  
REGISTERED CIVIL ENGINEER  
DATE: 06/01/20

DESIGNED: KJM  
DRAWN: EQW/SAF  
CHECKED: PUL  
DATE: 06/01/20  
ROAD NUMBER:

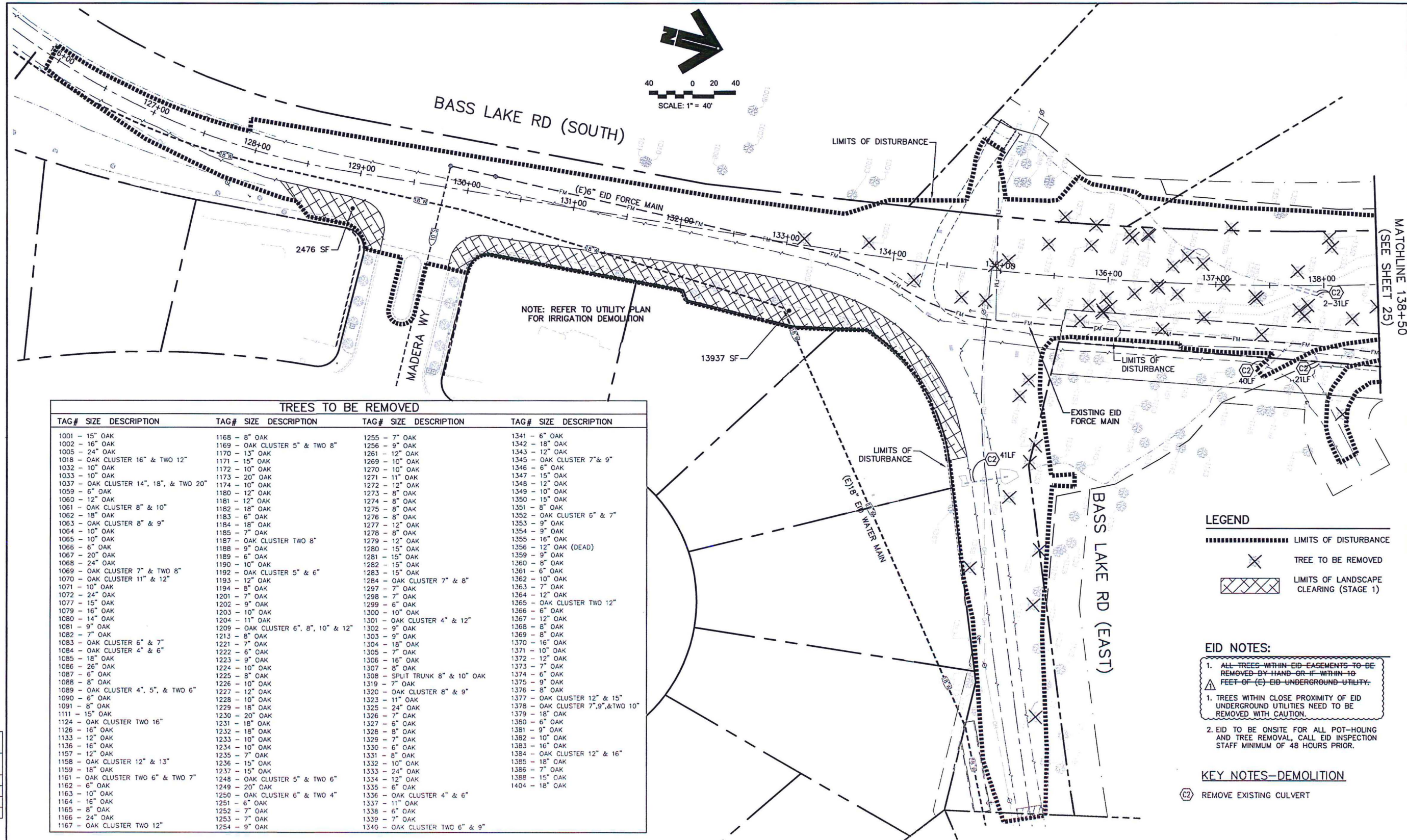


**COUNTY OF EL DORADO  
DEPARTMENT OF TRANSPORTATION**

**SILVER SPRINGS PARKWAY OFFSITE  
(SOUTH SEGMENT)  
DRIVEWAY STATIONS  
134+77.70 & 146+55.30**

SHEET  
**20R**  
OF **34**  
R.O. No. **76108**

File: K:\proj\144X\1480\DWG\SILVER SPRINGS 76108\105%\_ADD#1 SET\Plan\_Sheets\24R-25R\_TREE\_REMOVAL.dwg Jul 13, 2020 - 3:44pm kmoye  
 ORIGINAL SCALE IS IN INCHES  
 FOR REDUCED PLANS



**TREES TO BE REMOVED**

TAG#	SIZE	DESCRIPTION	TAG#	SIZE	DESCRIPTION	TAG#	SIZE	DESCRIPTION	TAG#	SIZE	DESCRIPTION
1001	15"	OAK	1168	8"	OAK	1255	7"	OAK	1341	6"	OAK
1002	16"	OAK	1169	OAK CLUSTER 5" & TWO 8"	1256	9"	OAK	1342	18"	OAK	
1005	24"	OAK	1170	13"	OAK	1261	12"	OAK	1343	12"	OAK
1018	OAK CLUSTER 16" & TWO 12"	1171	15"	OAK	1269	10"	OAK	1345	OAK CLUSTER 7" & 9"		
1032	10"	OAK	1172	10"	OAK	1270	10"	OAK	1346	6"	OAK
1033	10"	OAK	1173	20"	OAK	1271	11"	OAK	1347	15"	OAK
1037	OAK CLUSTER 14", 18", & TWO 20"	1174	10"	OAK	1272	12"	OAK	1348	12"	OAK	
1059	6"	OAK	1180	12"	OAK	1273	8"	OAK	1349	10"	OAK
1060	12"	OAK	1181	12"	OAK	1274	8"	OAK	1350	15"	OAK
1061	OAK CLUSTER 8" & 10"	1182	18"	OAK	1275	8"	OAK	1351	8"	OAK	
1062	18"	OAK	1183	6"	OAK	1276	8"	OAK	1352	OAK CLUSTER 6" & 7"	
1063	OAK CLUSTER 8" & 9"	1184	18"	OAK	1277	12"	OAK	1353	9"	OAK	
1064	10"	OAK	1185	7"	OAK	1278	8"	OAK	1354	9"	OAK
1065	10"	OAK	1187	OAK CLUSTER TWO 8"	1279	12"	OAK	1355	16"	OAK	
1066	6"	OAK	1188	9"	OAK	1280	15"	OAK	1356	12"	OAK (DEAD)
1067	20"	OAK	1189	6"	OAK	1281	15"	OAK	1359	9"	OAK
1068	24"	OAK	1190	10"	OAK	1282	15"	OAK	1360	8"	OAK
1069	OAK CLUSTER 7" & TWO 8"	1192	OAK CLUSTER 5" & 6"	1283	15"	OAK	1361	6"	OAK		
1070	OAK CLUSTER 11" & 12"	1193	12"	OAK	1284	OAK CLUSTER 7" & 8"	1362	10"	OAK		
1071	10"	OAK	1194	8"	OAK	1297	7"	OAK	1363	7"	OAK
1072	24"	OAK	1201	7"	OAK	1298	7"	OAK	1364	12"	OAK
1077	15"	OAK	1202	9"	OAK	1299	6"	OAK	1365	OAK CLUSTER TWO 12"	
1079	16"	OAK	1203	10"	OAK	1300	10"	OAK	1366	6"	OAK
1080	14"	OAK	1204	11"	OAK	1301	OAK CLUSTER 4" & 12"	1367	12"	OAK	
1081	9"	OAK	1209	OAK CLUSTER 6", 8", 10" & 12"	1302	9"	OAK	1368	8"	OAK	
1082	7"	OAK	1213	8"	OAK	1303	9"	OAK	1369	9"	OAK
1083	OAK CLUSTER 6" & 7"	1221	8"	OAK	1304	18"	OAK	1370	16"	OAK	
1084	OAK CLUSTER 4" & 6"	1222	6"	OAK	1305	7"	OAK	1371	10"	OAK	
1085	16"	OAK	1223	9"	OAK	1306	16"	OAK	1372	12"	OAK
1086	26"	OAK	1224	10"	OAK	1307	8"	OAK	1373	7"	OAK
1087	6"	OAK	1225	8"	OAK	1308	SPLIT TRUNK 8" & 10" OAK	1374	6"	OAK	
1088	8"	OAK	1226	10"	OAK	1319	7"	OAK	1375	9"	OAK
1089	OAK CLUSTER 4", 5", & TWO 6"	1227	12"	OAK	1320	OAK CLUSTER 8" & 9"	1376	8"	OAK		
1090	6"	OAK	1228	10"	OAK	1323	11"	OAK	1377	OAK CLUSTER 12" & 15"	
1091	8"	OAK	1229	18"	OAK	1325	24"	OAK	1378	OAK CLUSTER 7", 9", & TWO 10"	
1111	15"	OAK	1230	20"	OAK	1326	7"	OAK	1379	18"	OAK
1124	OAK CLUSTER TWO 16"	1231	18"	OAK	1327	6"	OAK	1380	6"	OAK	
1126	16"	OAK	1232	18"	OAK	1328	8"	OAK	1381	9"	OAK
1133	12"	OAK	1233	10"	OAK	1329	7"	OAK	1382	10"	OAK
1136	16"	OAK	1234	10"	OAK	1330	6"	OAK	1383	16"	OAK
1157	12"	OAK	1235	7"	OAK	1331	8"	OAK	1384	OAK CLUSTER 12" & 16"	
1158	OAK CLUSTER 12" & 13"	1236	15"	OAK	1332	10"	OAK	1385	18"	OAK	
1159	16"	OAK	1237	15"	OAK	1333	24"	OAK	1386	7"	OAK
1161	OAK CLUSTER TWO 6" & TWO 7"	1248	OAK CLUSTER 5" & TWO 6"	1334	12"	OAK	1388	15"	OAK		
1162	6"	OAK	1249	20"	OAK	1335	6"	OAK	1404	18"	OAK
1163	10"	OAK	1250	OAK CLUSTER 6" & TWO 4"	1336	OAK CLUSTER 4" & 6"					
1164	16"	OAK	1251	6"	OAK	1337	11"	OAK			
1165	8"	OAK	1252	7"	OAK	1338	6"	OAK			
1166	24"	OAK	1253	7"	OAK	1339	7"	OAK			
1167	OAK CLUSTER TWO 12"	1254	9"	OAK	1340	OAK CLUSTER TWO 6" & 9"					

**LEGEND**

- ..... LIMITS OF DISTURBANCE
- X TREE TO BE REMOVED
- XXXXX LIMITS OF LANDSCAPE CLEARING (STAGE 1)

**EID NOTES:**

- ALL TREES WITHIN EID EASEMENTS TO BE REMOVED BY HAND OR IF WITHIN 10 FEET OF (E) EID UNDERGROUND UTILITY.
- TREES WITHIN CLOSE PROXIMITY OF EID UNDERGROUND UTILITIES NEED TO BE REMOVED WITH CAUTION.
- EID TO BE ONSITE FOR ALL POT-HOLING AND TREE REMOVAL, CALL EID INSPECTION STAFF MINIMUM OF 48 HOURS PRIOR.

**KEY NOTES-DEMOLITION**

- (C2) REMOVE EXISTING CULVERT

REVISION NUMBER	DATE	APPENDUM #1	DESCRIPTION	EDC BY
1	7/10/20			

PREPARED UNDER THE SUPERVISION OF:

*Keani Nagel*  
 REGISTERED CIVIL ENGINEER  
 No. C56348 Exp. 3-31-21  
 CIVIL  
 STATE OF CALIFORNIA

DATE: 06/01/20

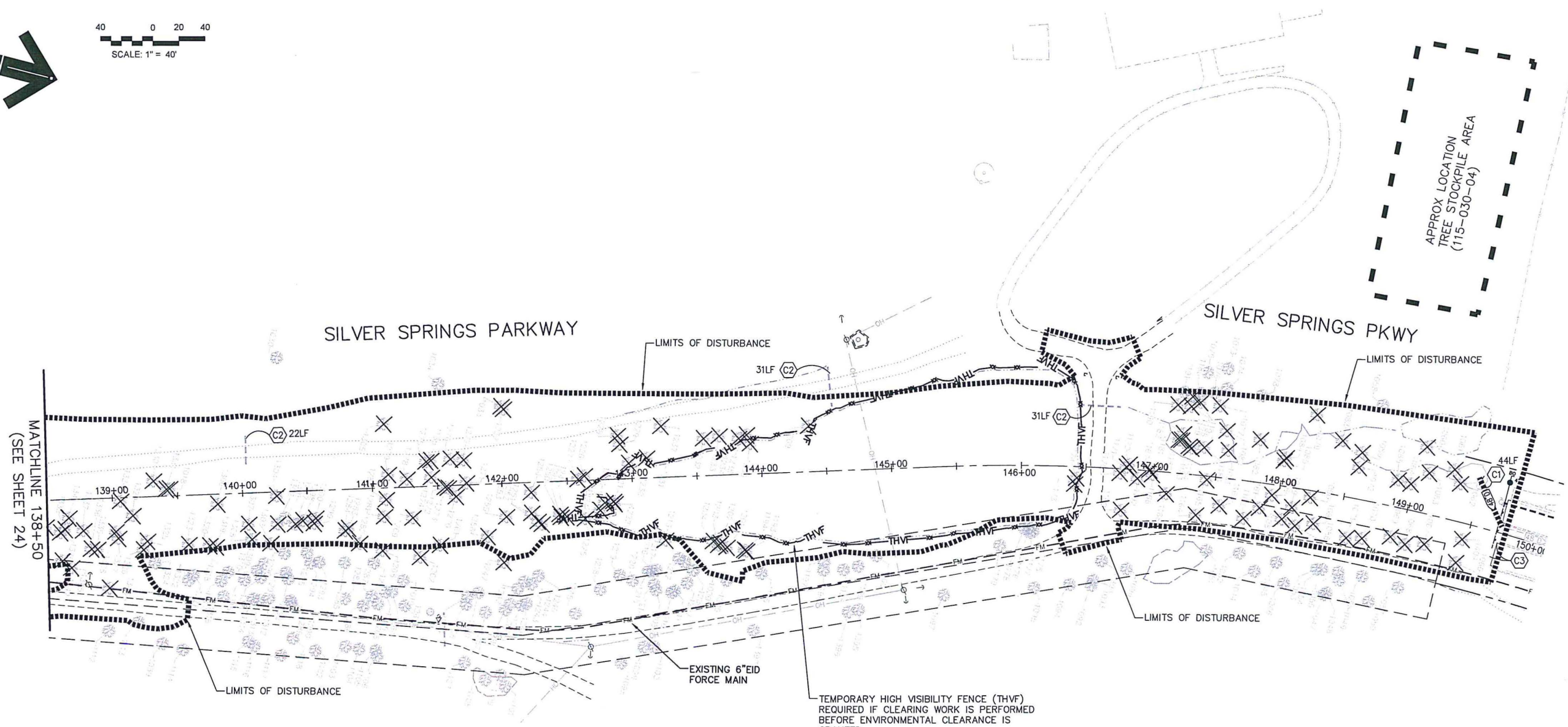
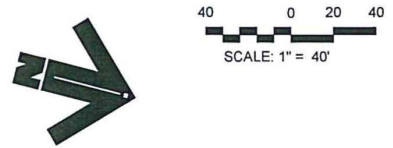
DESIGNED: KM  
 DRAWN: EOW/SAF  
 CHECKED: P.J.L.  
 DATE: 06/01/20  
 ROAD NUMBER:

**COUNTY OF EL DORADO**  
**DEPARTMENT OF TRANSPORTATION**

**SILVER SPRINGS PARKWAY OFFSITE**  
**(SOUTH SEGMENT)**  
**TREE REMOVAL & DEMOLITION PLAN**  
 STA. 125+50.00 TO 138+50.00

SHEET  
**24R**  
 of **34**  
 W.D. No. **76108**

File: K:\pro\144\1480\DWG\SILVER SPRINGS 76108\1055 ADD#1 SET\Plan Sheets\25R-25R\_TREE REMOVAL.dwg Jul 13, 2020 - 11:59am kmayo  
 ORIGINAL SCALE IS IN INCHES  
 2  
 1  
 0  
 FOR REDUCED PLANS



**LEGEND**

- LIMITS OF DISTURBANCE
- × TREE TO BE REMOVED
- x-x- PROPOSED TEMPORARY HIGH VISIBILITY FENCE

**KEY NOTES-DEMOLITION**

- (C1) REMOVE EXISTING INLET, STORM DRAIN AND MANHOLE.
- (C2) REMOVE EXISTING CULVERT
- (C3) REMOVE EXISTING BARRICADE AND GATE.

**EID NOTES:**

1. ALL TREES WITHIN EID EASEMENTS TO BE REMOVED BY HAND OR IF WITHIN 10 FEET OF (E) EID UNDERGROUND UTILITY.
1. TREES WITHIN CLOSE PROXIMITY OF EID UNDERGROUND UTILITIES NEED TO BE REMOVED WITH CAUTION.
2. EID TO BE ONSITE FOR ALL POT-HOLING AND TREE REMOVAL, CALL EID INSPECTION STAFF MINIMUM OF 48 HOURS PRIOR.

REVISION	NUMBER	DATE	ADDENDUM #1	DESCRIPTION	FDC BY
	7/10/20				



PREPARED UNDER THE SUPERVISION OF:  
*Kevin Mayel*  
 REGISTERED CIVIL ENGINEER 06/01/20  
 DATE:

DESIGNED: KM DRAWN: EOW/SAF  
 CHECKED: P.J.L. DATE: 06/01/20  
 ROAD NUMBER:

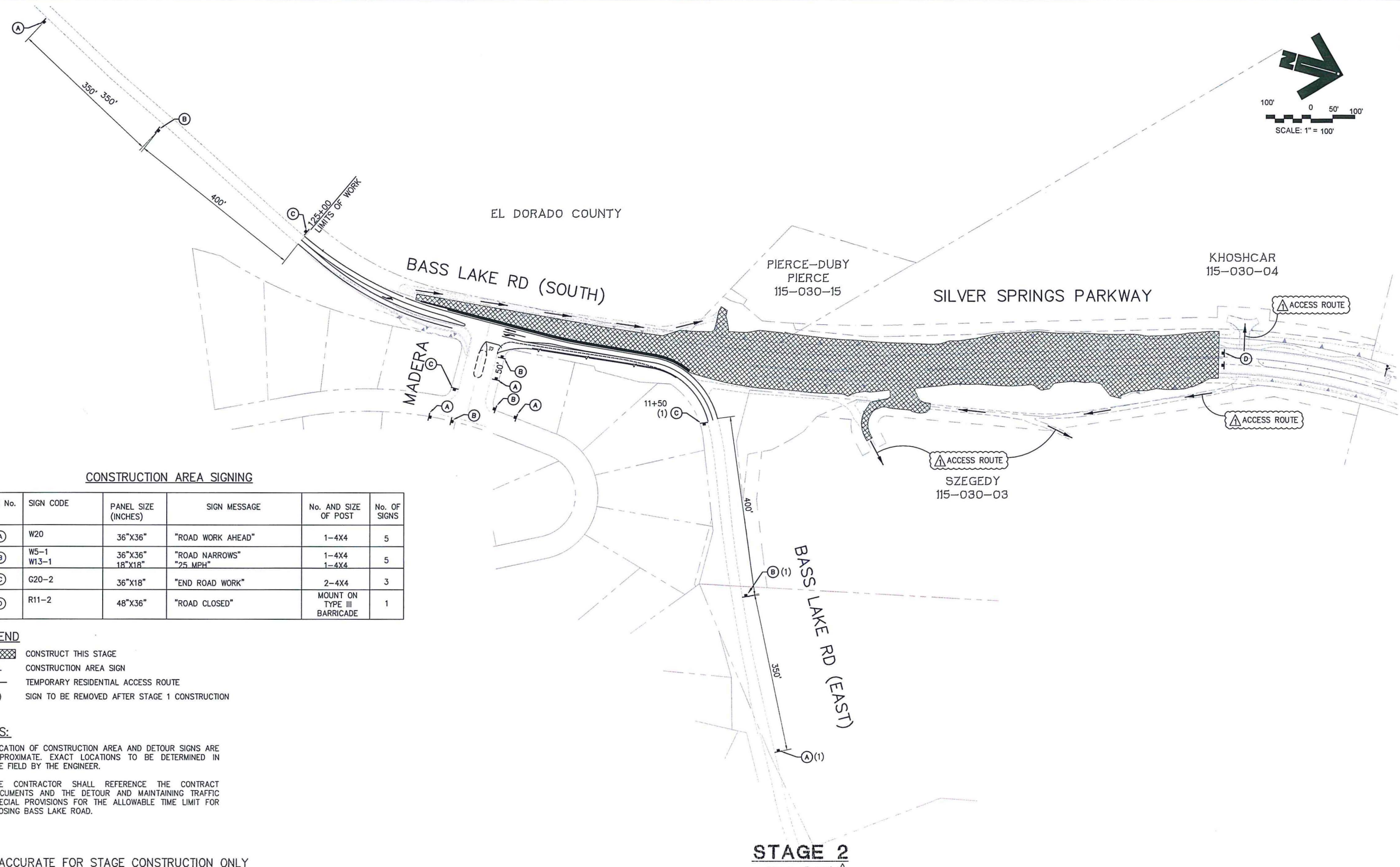


**COUNTY OF EL DORADO  
 DEPARTMENT OF TRANSPORTATION**

**SILVER SPRINGS PARKWAY OFFSITE  
 (SOUTH SEGMENT)  
 TREE REMOVAL & DEMOLITION PLAN  
 STA. 138+50.00 TO 150+00.00**

SHEET  
**25R**  
 OF 34  
 P.O. No. **76108**

File: K:\proj\444\480\DWG\SILVER SPRINGS 76108\035 ADD#1 SET\Plan Sheets\29R\_CONSTR STAGE 2 SIGNAGE.dwg Jul 13, 2020 - 3:48pm kmajo  
 ORIGINAL SCALE IS IN INCHES  
 2  
 1  
 0  
 FOR REDUCED PLANS



**CONSTRUCTION AREA SIGNING**

SIGN No.	SIGN CODE	PANEL SIZE (INCHES)	SIGN MESSAGE	No. AND SIZE OF POST	No. OF SIGNS
(A)	W20	36"X36"	"ROAD WORK AHEAD"	1-4X4	5
(B)	W5-1 W13-1	36"X36" 18"X18"	"ROAD NARROWS" "25 MPH"	1-4X4 1-4X4	5
(C)	G20-2	36"X18"	"END ROAD WORK"	2-4X4	3
(D)	R11-2	48"X36"	"ROAD CLOSED"	MOUNT ON TYPE III BARRICADE	1

**LEGEND**

- CONSTRUCT THIS STAGE
- CONSTRUCTION AREA SIGN
- TEMPORARY RESIDENTIAL ACCESS ROUTE
- (1) SIGN TO BE REMOVED AFTER STAGE 1 CONSTRUCTION

**NOTES:**

1. LOCATION OF CONSTRUCTION AREA AND DETOUR SIGNS ARE APPROXIMATE. EXACT LOCATIONS TO BE DETERMINED IN THE FIELD BY THE ENGINEER.
2. THE CONTRACTOR SHALL REFERENCE THE CONTRACT DOCUMENTS AND THE DETOUR AND MAINTAINING TRAFFIC SPECIAL PROVISIONS FOR THE ALLOWABLE TIME LIMIT FOR CLOSING BASS LAKE ROAD.

PLANS ACCURATE FOR STAGE CONSTRUCTION ONLY

**STAGE 2**  
SCALE: 1"=100'

<table border="1" style="width: 100%; border-collapse: collapse;"> <thead> <tr> <th>REVISION</th> <th>NUMBER</th> <th>DATE</th> <th>DESCRIPTION</th> <th>FDC BY</th> </tr> </thead> <tbody> <tr> <td style="text-align: center;">A</td> <td>7/10/20</td> <td>ADDENDUM #1</td> <td></td> <td></td> </tr> </tbody> </table>	REVISION	NUMBER	DATE	DESCRIPTION	FDC BY	A	7/10/20	ADDENDUM #1				PREPARED UNDER THE SUPERVISION OF:  REGISTERED CIVIL ENGINEER 06/01/20 DATE:	DESIGNED: KM CHECKED: PJL ROAD NUMBER:	DRAWN: EQW/SAF DATE: 06/01/20	 <b>COUNTY OF EL DORADO</b> <b>DEPARTMENT OF TRANSPORTATION</b>	<b>SILVER SPRINGS PARKWAY OFFSITE (SOUTH SEGMENT)</b> STAGE 2 OFF-SITE SIGNAGE PLAN	SHEET <b>29R</b> OF 34 W.O. No. <b>76108</b>
REVISION	NUMBER	DATE	DESCRIPTION	FDC BY													
A	7/10/20	ADDENDUM #1															



File: K:\proj\1444\1480\DWG\SILVER SPRINGS 76108\105% ADD\1 SET\Plan Sheets\33R\_EROS\_CTRL.dwg Jul 13, 2020 - 3:55pm kmcyo

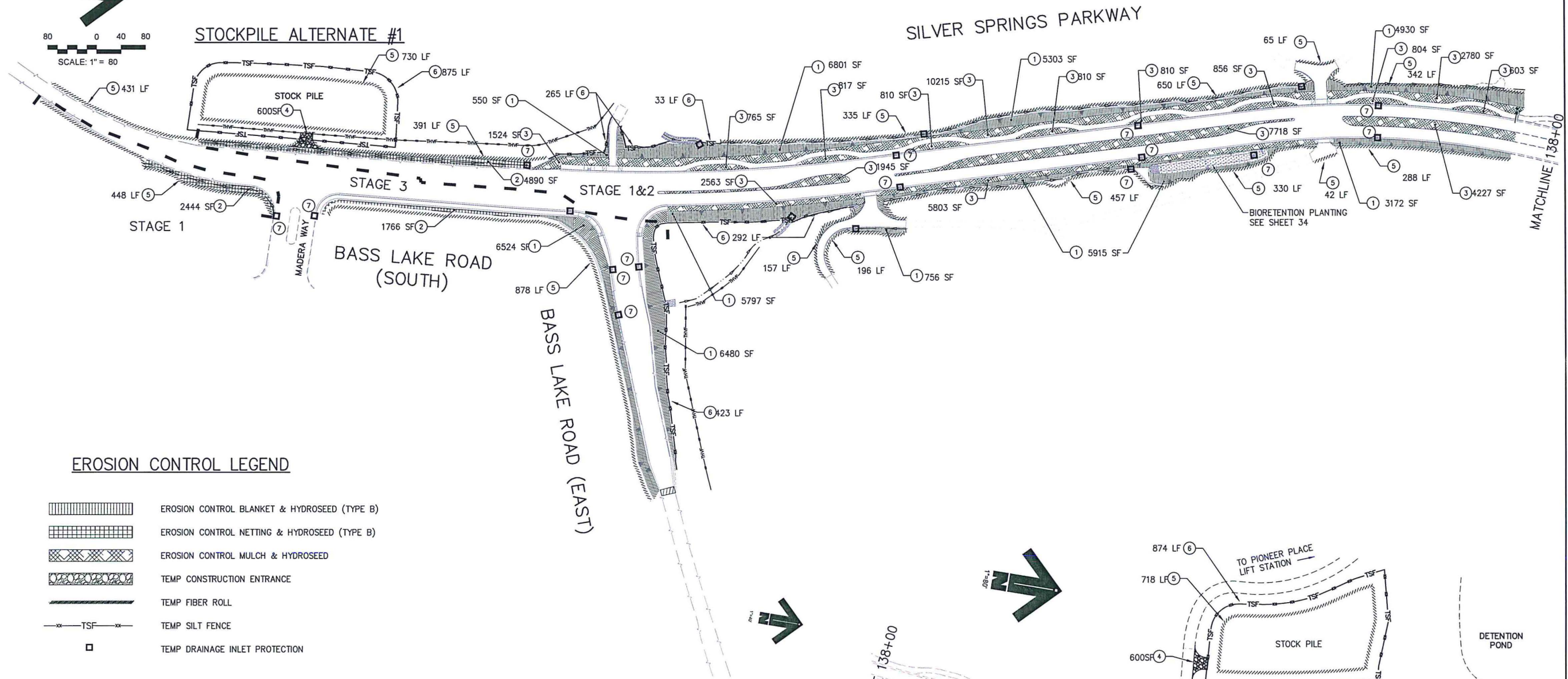
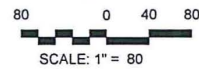
ORIGINAL SCALE IS IN INCHES

2

1

0

FOR REDUCED PLANS



**EROSION CONTROL LEGEND**

- EROSION CONTROL BLANKET & HYDROSEED (TYPE B)
- EROSION CONTROL NETTING & HYDROSEED (TYPE B)
- EROSION CONTROL MULCH & HYDROSEED
- TEMP CONSTRUCTION ENTRANCE
- TEMP FIBER ROLL
- TEMP SILT FENCE
- TEMP DRAINAGE INLET PROTECTION

**STAGE 1 & 2 EROSION CONTROL QUANTITIES**

No.	DESCRIPTION	UNIT	QUANTITY
①	EROSION CONTROL BLANKET & HYDROSEED (TYPE B)	SF	33,224 SF
②	EROSION CONTROL NETTING & HYDROSEED (TYPE B)	SF	7,334 SF
③	EROSION CONTROL MULCH & HYDROSEED	SF	42,447 SF
④	TEMP CONSTRUCTION ENTRANCE	SF	1,200 SF
⑤	TEMP FIBER ROLL	LF	5,423 LF
⑥	TEMP SILT FENCE	LF	2,339 LF
⑦	TEMP DRAINAGE INLET PROTECTION	EA	18 EA

**STAGE 3 EROSION CONTROL QUANTITIES**

No.	DESCRIPTION	UNIT	QUANTITY
①	EROSION CONTROL BLANKET & HYDROSEED (TYPE B)	SF	13,004 SF
②	EROSION CONTROL NETTING & HYDROSEED (TYPE B)	SF	1,766 SF
⑤	TEMP FIBER ROLL	LF	878 LF
⑥	TEMP SILT FENCE	LF	423 LF
⑦	TEMP DRAINAGE INLET PROTECTION	EA	6 EA

PLANS ACCURATE FOR EROSION CONTROL ONLY

REVISION	NUMBER	DATE	ADDENDUM #1	DESCRIPTION	EDC BY
Δ	7/10/20				



PREPARED UNDER THE SUPERVISION OF:  
*Kevin Meyer*  
 REGISTERED CIVIL ENGINEER 06/01/20  
 DATE:

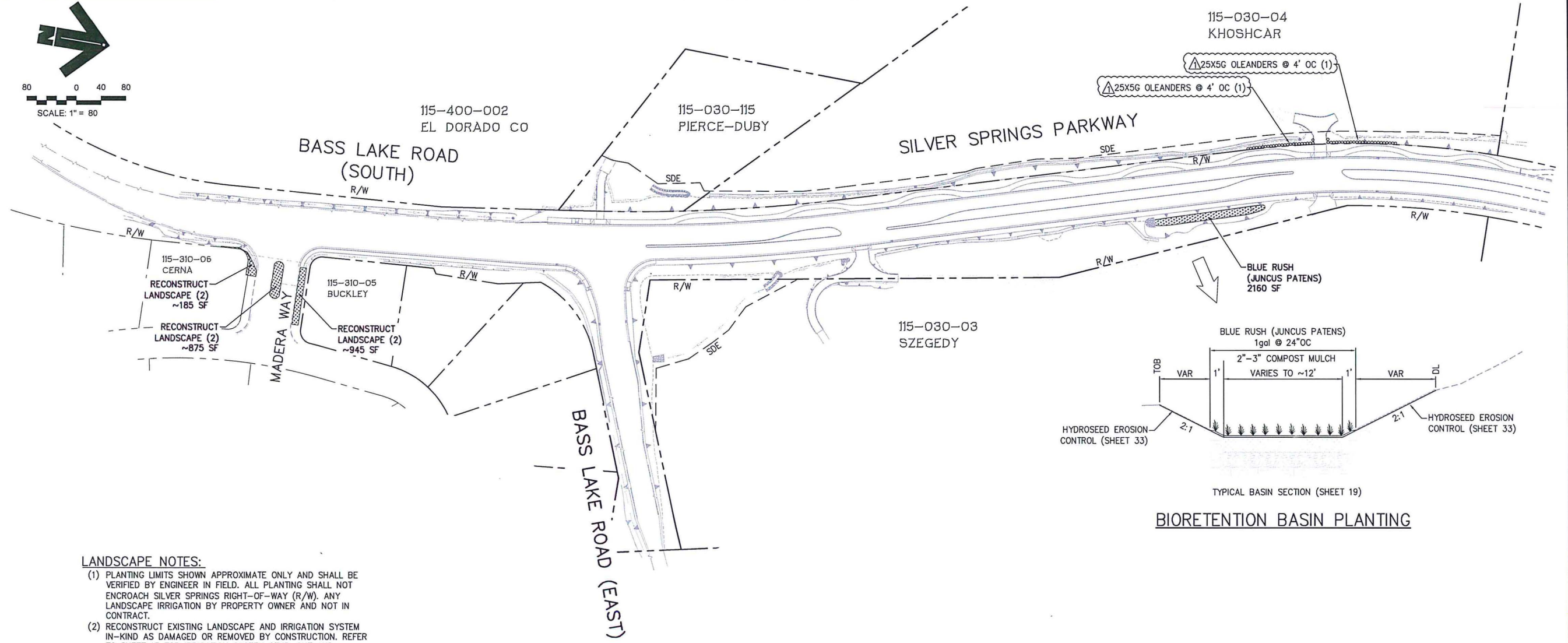
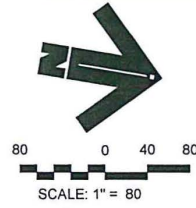
DESIGNED: KM DRAWN: EQW/SAF  
 CHECKED: P.J.L. DATE: 06/01/20  
 ROAD NUMBER:



COUNTY OF EL DORADO  
 DEPARTMENT OF TRANSPORTATION

SILVER SPRINGS PARKWAY OFFSITE  
 (SOUTH SEGMENT)  
 EROSION CONTROL PLAN

SHEET  
 33R  
 OF 34  
 W.O. No. 76108



**LANDSCAPE NOTES:**

- (1) PLANTING LIMITS SHOWN APPROXIMATE ONLY AND SHALL BE VERIFIED BY ENGINEER IN FIELD. ALL PLANTING SHALL NOT ENCROACH SILVER SPRINGS RIGHT-OF-WAY (R/W). ANY LANDSCAPE IRRIGATION BY PROPERTY OWNER AND NOT IN CONTRACT.
- (2) RECONSTRUCT EXISTING LANDSCAPE AND IRRIGATION SYSTEM IN-KIND AS DAMAGED OR REMOVED BY CONSTRUCTION. REFER TO SHEET 13 FOR IRRIGATION SYSTEM STUB-OUT AND MODIFICATIONS DUE TO CONSTRUCTION.

File: K:\proj\149X\1490\DWG\SILVER SPRINGS 76108\05% ADD\1 SET\Plan Sheets\34R\_LANDSCAPE.dwg Jul 13, 2020 - 3:58pm kmayo  
 ORIGINAL SCALE IS IN INCHES  
 FOR REDUCED PLANS

PLANS ACCURATE FOR LANDSCAPE ONLY

REVISION	NUMBER	DATE	ADDENDUM #1	DESCRIPTION	EDC BY
	1	7/10/20			



PREPARED UNDER THE SUPERVISION OF:  
*Kevin Mayel*  
 REGISTERED CIVIL ENGINEER  
 DATE: 06/01/20

DESIGNED: KM  
 DRAWN: EQW/SAF  
 CHECKED: PJJL  
 DATE: 06/01/20  
 ROAD NUMBER:



COUNTY OF EL DORADO  
 DEPARTMENT OF TRANSPORTATION

SILVER SPRINGS PARKWAY OFFSITE  
 (SOUTH SEGMENT)  
 LANDSCAPE PLAN

SHEET  
**34R**  
 OF 34  
 W.O. No. **76108**