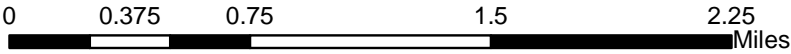
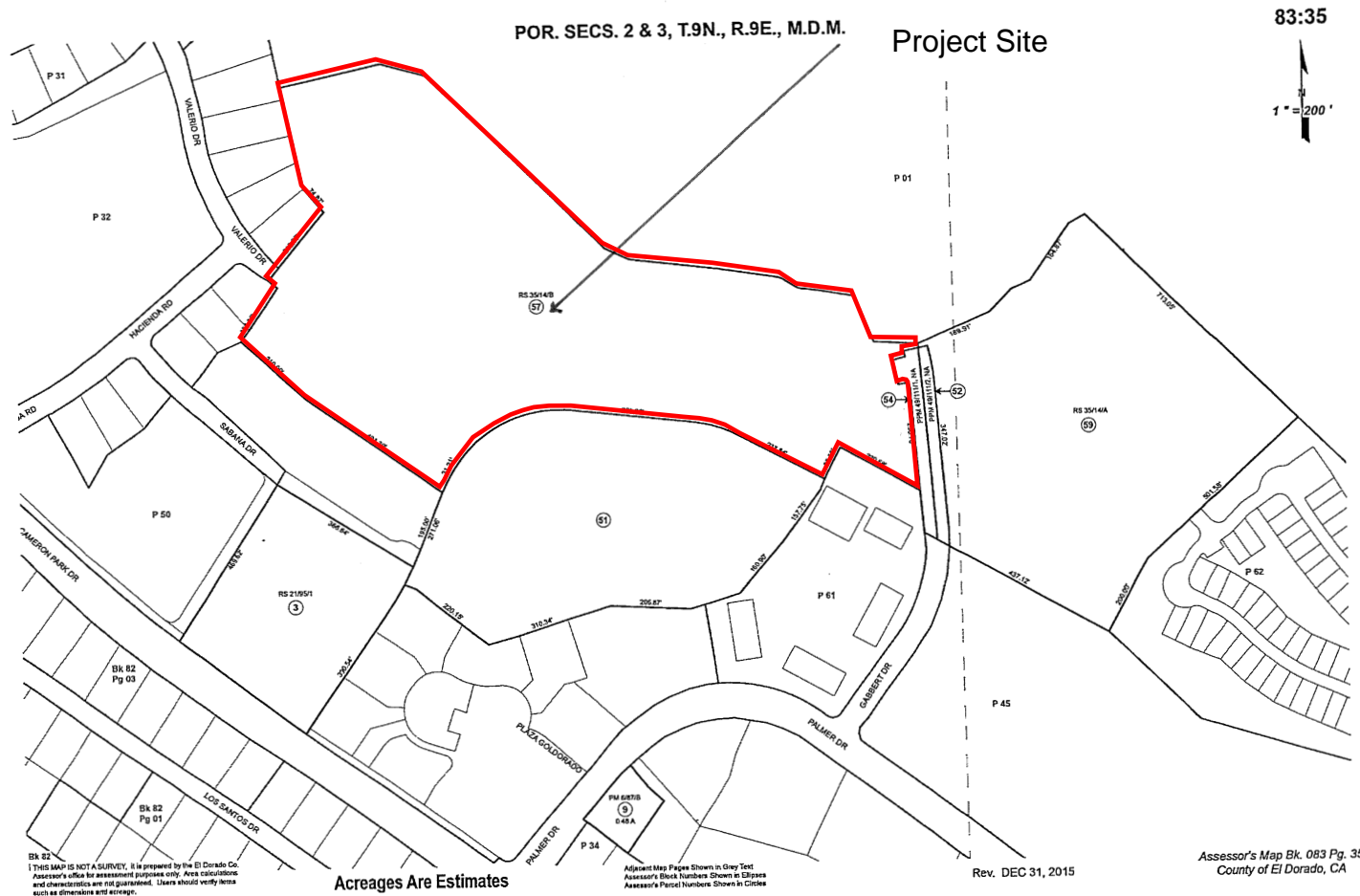


Exhibit A: Location Map
P-E22-0002/Ponte Palmero Phase II

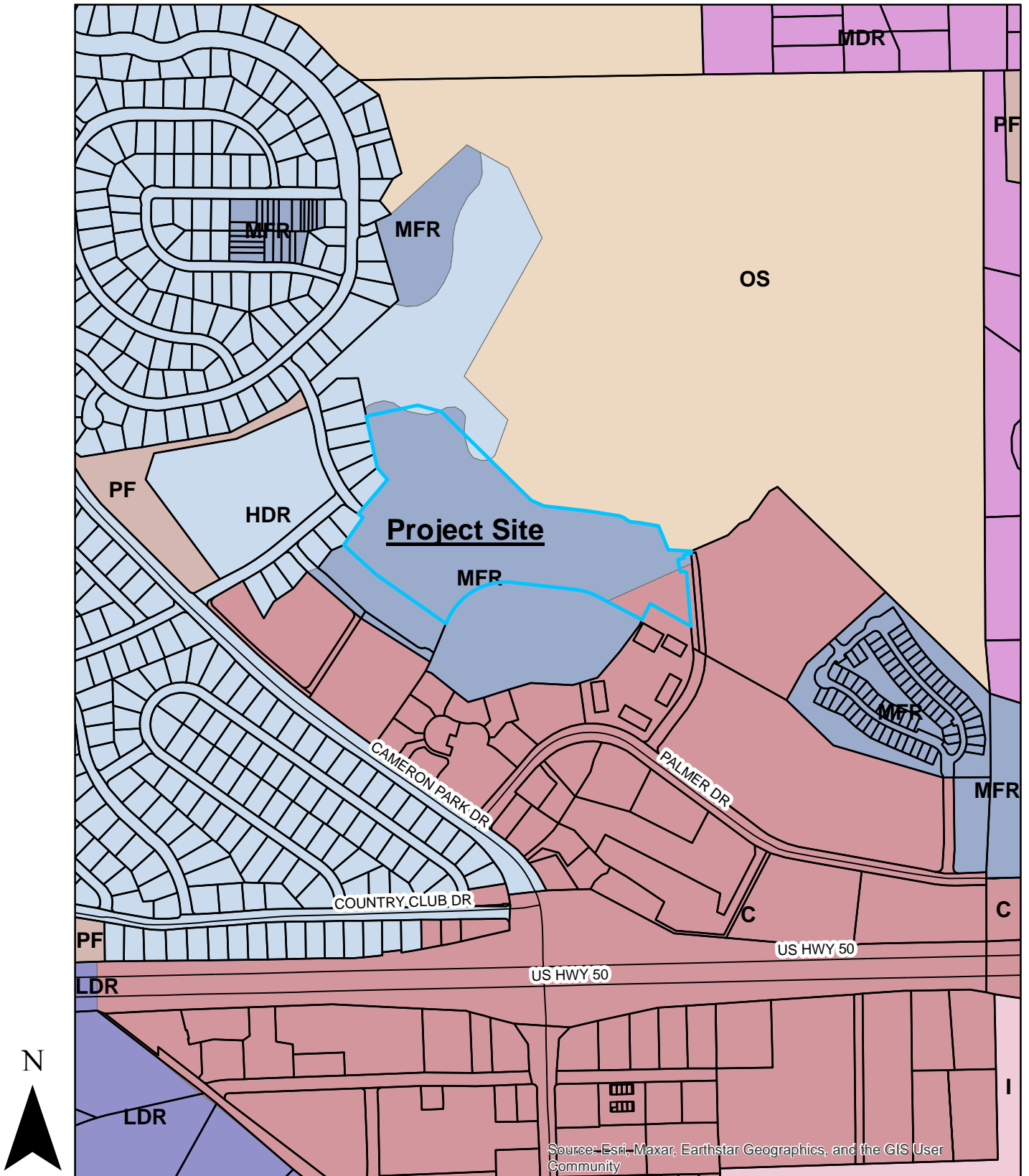




This map/plat is being furnished as an aid in locating the herein described Land in relation to adjoining streets, natural boundaries and other land, and is not a survey of the land depicted. Except to the extent a policy of title insurance is expressly modified by endorsement, if any, the Company does not insure dimensions, distances, location of easements, acreage or other matters shown thereon.

Exhibit B: Assessor's Parcel Map P-E22-0002/Ponte Palmero Phase II

Exhibit C: General Plan Map P-E22-0002/Ponte Palmero Phase II



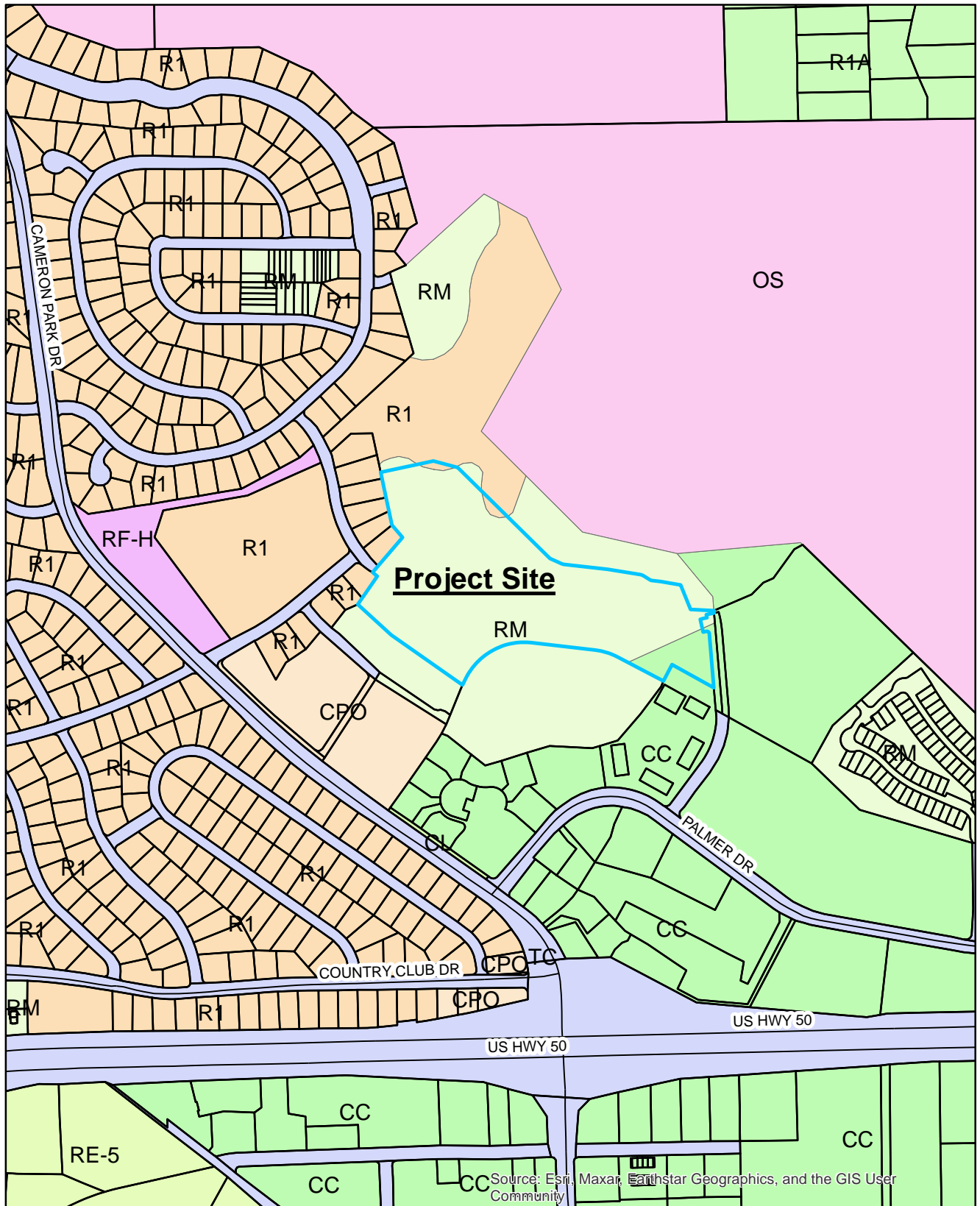
Source: Esri, Maxar, Earthstar Geographics, and the GIS User Community

0 0.0475 0.095 0.19 0.285 Miles

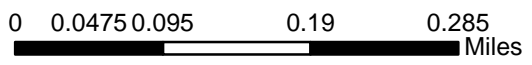
Scale 1:10,000

Map prepared by:
Corinne Resha
Planning Dept.
October 21, 2022

Exhibit D: Zoning Map P-E22-0002/Ponte Palmero Phase II



Source: Esri, Maxar, Earthstar Geographics, and the GIS User Community



Scale 1:10,000

Map prepared by:
Corinne Resha
Planning Dept.
October 21, 2022



Exhibit E: Aerial Map
P-E22-0002/Ponte Palmero Phase II

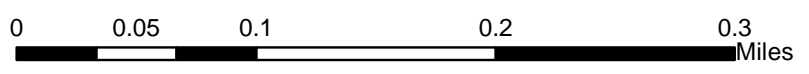
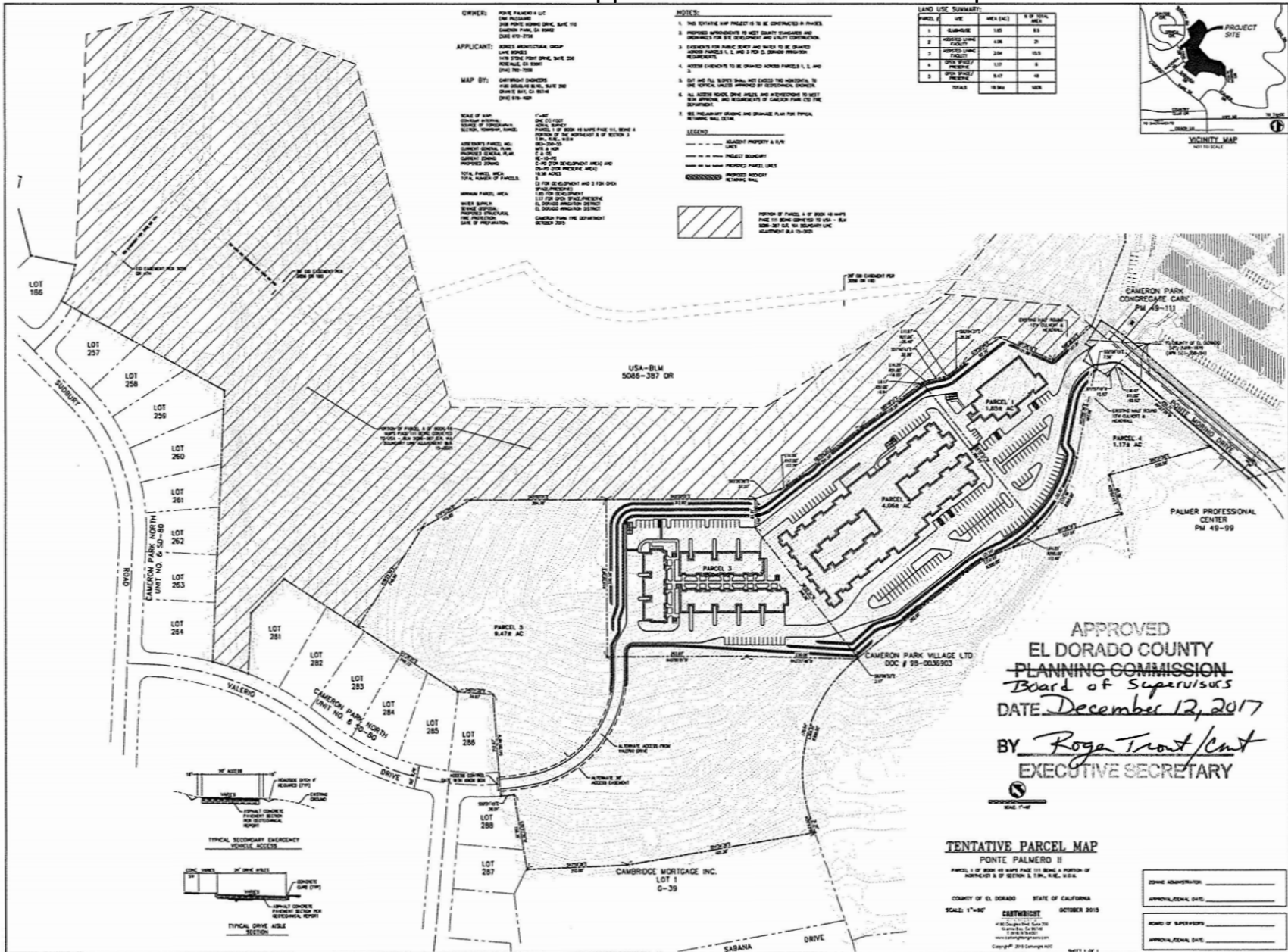


Exhibit F: Timeline and Expiration P-E22-0002/Ponte Palmero Phase II

Ponte Palmero Phase II Parcel Map Timeline and Expiration				
Item No.	Type of Action	Application	Dates (From/To)	Total Time (Years Unless Noted)
1	Discretionary	Original Parcel Map Approval Date (BOS)	12.12.2017	3
		Original Expiration	12.12.2020	
		<i>EDC Code Section 120.74.020</i>		
Current Request				
2	Discretionary	Time Extension	2 years	2
		Revised Expiration	12.12.2022	
		<i>Request for two, 1- year time extension in accordance with EDC Code Section 120.74.030</i>		
3	Discretionary	Time Extension	2 Years	2
		Revised Expiration if Approved	12.12.2024	
		<i>Request for two, 1- year time extension in accordance with EDC Code Section 120.74.030</i>		

Exhibit G: Approved Tentative Parcel Map



P-E22-0002/Ponte Palmero Phase II