



CONSTRUCTION DIVISION
 2441 Headington Road
 Placerville CA 95667
 Phone: (530) 642-4987
 Fax: (530) 295-2655

KIMBERLY A. KERR
 Interim Director of
 Transportation

 Internet Web Site:
<http://edcgov.us/dot>

MAIN OFFICE
 2850 Fairlane Court
 Placerville CA 95667
 Phone: (530) 621-5900
 Fax: (530) 626-0387



DATE: April 9, 2012

TO: All Prospective Bidders

SUBJECT: **Addendum No. 3**
Wentworth Springs Road at Gerle Creek – Bridge Replacement Project
Contract No. PW 11-30573, CIP No. 77118

Submit proposals for this work with the understanding and full consideration of this addendum. The revisions declared in this addendum are essential parts of the Contract.

| ITEM NO. | LOCATION, PAGE OR DRAWING NO. | DESCRIPTION OF CHANGE |
|----------|-------------------------------|---|
| 3.01 | Plan Sheet S-2 and SP-76 | <p>Bidders are instructed to replace Plan Sheet 7 of 13 (S-2) with revised Plan Sheet 7 of 13 (S-2) attached to this Addendum.</p> <p>Revise the last bullet under "Superstructure Loading" in Section 10-1.19 "Pre-fabricated Steel Truss Bridge" on SP-76 of the special provisions to read as follows:</p> <ul style="list-style-type: none"> ▪ <i>"Seismic loads at each abutment = 90 kips (longitudinal); and 60 kips (transverse)."</i> |

The pages of this addendum, excluding the revised plan sheet, shall be attached to the Contract Documents booklet.

Indicate receipt of this addendum by filling in the number of this addendum in the space provided on the signature page of the proposal.

Holders who have already mailed their proposal can contact Janel Gifford at (email: Janel.Gifford@edcgov.us) to arrange return of their proposal.

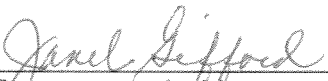
Inform all suppliers and subcontractors as necessary.

The DOT is only sending this addendum by posting on the following website: <http://www.edcgov.us/Government/DOT/Bids.aspx>.

If you are not a Contract Documents Holder, but request a set of documents to bid on this project, you must comply with the requirements of this addendum when submitting your bid.

Attachments:
Revised Plan Sheet 7 of 13 (S-2) 1 page

End of Addendum No. 3



Recommended by:
Janel Gifford, P.E.
Office Engineer



Date



Approved by:
Kimberly A. Kerr
Interim Director of Transportation



Date

ORIGINAL SCALE IS IN INCHES
Drawing name: C:\Civil 3D Projects\77118 Gerle Creek\CADD Files\Sheets\1-2.dwg Layout Tab: S-2 Apr 09, 2012 - 9:23am Dharrington

GENERAL NOTES

DESIGN: AASHTO LRFD Bridge Design Specifications, 3rd Edition with interims through 2006 and the Caltrans Amendments v3.06.01 except that the abutments are designed using Bridge Design Specifications (LFD Version, April 2000).

SEISMIC DESIGN: CALTRANS Seismic Design Criteria (SDC), Version 1.4, June 2006.

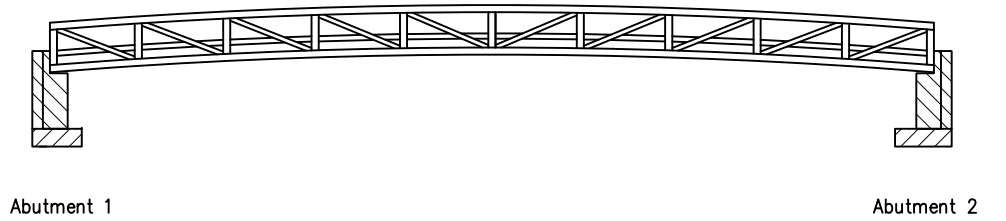
DEAD LOAD: No allowance for future wearing surface.

LIVE LOADING: HL-93 and permit design load.

SNOW LOAD: 291 psf

SEISMIC LOADING: SDC ARS Curve for Soil Profile Type D
Site Specific Calculated Spectra Curve
West Tahoe - Dollar Point Fault, Magnitude = 7.0

REINFORCED CONCRETE: $F_y = 60$ ksi
 $f'_c = 3.6$ ksi
 $n = 8$



CONCRETE TYPE AND LIMITS

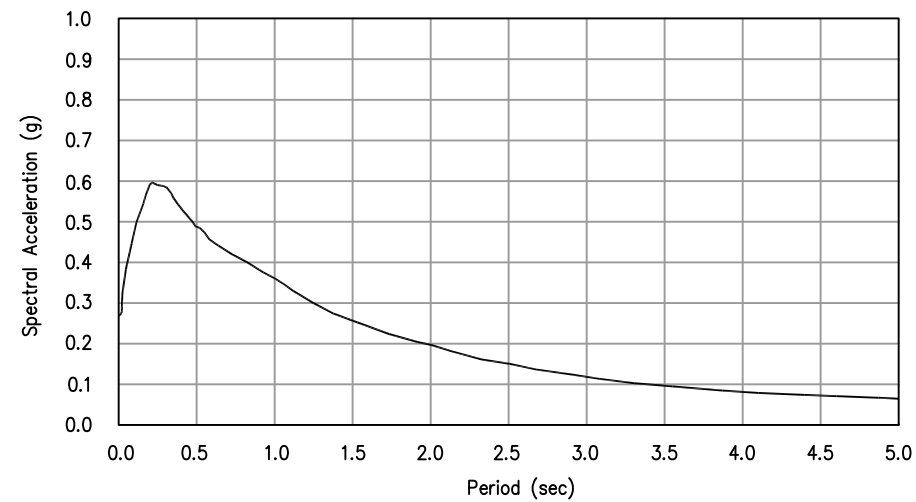
NO SCALE

- Structural Concrete, Bridge
- Structural Concrete, Bridge Footing

BRIDGE SUPPORT REACTIONS

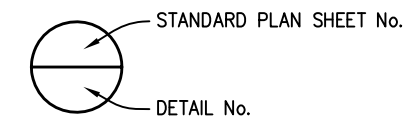
| Loading Type | Maximum Design Reactions (kips) | |
|---------------------|---------------------------------|--------------|
| | Abut 1 | Abut 2 |
| Vertical Dead Load | 200 | 200 |
| Vertical Live Loads | 107 (HL-93) | 107 (HL-93) |
| | 215 (P-15) | 215 (P-15) |
| | 291 (Snow) | 291 (Snow) |
| Seismic Load | 90 (Long.) | 90 (Long.) |
| | 60 (Trans.) | 60 (Trans.) |
| Wind Loads | 20 (Lateral) | 20 (Lateral) |
| | 6 (Uplift) | 6 (Uplift) |

ACCELERATION RESPONSE SPECTRA CURVE



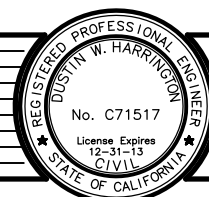
STANDARD PLANS DATED MAY 2006

- A10A ACRONYMS AND ABBREVIATIONS (A-L)
- A10B ACRONYMS AND ABBREVIATIONS (M-Z)
- A10C SYMBOLS (Sheet 1 of 2)
- A10D SYMBOLS (Sheet 2 of 2)
- A62C LIMITS OF PAYMENT FOR EXCAVATION AND BACKFILL - BRIDGE
- BO-3 BRIDGE DETAILS



INDEX TO PLANS

| REVISION | NUMBER | DATE | DESCRIPTION | BY |
|----------|--------|--------|---------------------------------|----|
| | 1 | 4/9/12 | ADDED TRANSVERSE SEISMIC LOADS. | |



PREPARED UNDER THE SUPERVISION OF :
[Signature]
REGISTERED CIVIL ENGINEER
DATE: 2/22/12

DESIGNED: DH
DRAWN: DH
CHECKED: RC
DATE: 12/2/11
ROAD NUMBER:



EL DORADO COUNTY
DEPARTMENT OF TRANSPORTATION

WENTWORTH SPRINGS ROAD
at GERLE CREEK
BRIDGE REPLACEMENT PROJECT

SHEET
S-2
7 OF 13
W.O. No. 77118