

GENERAL PLAN
Policy 7.4.2.8 (A)(1)-(5) (INRMP)

“The INRMP shall inventory and map *the following important habitats* in El Dorado County:

1. Habitats that support special-status species;
2. Aquatic environments including streams, rivers, and lakes;
3. Wetland and riparian habitat;
4. Important habitat for migratory deer herds; and
5. Large expanses of native vegetation.

Final GP EIR

“State and federal statutory requirements protecting biological resources were considered when developing the list of important habitat listed on page 5.12-56 (INRMP 7.4.2.8 (A)) The “County has the *option of expanding the definition of* important habitats beyond these listed on Policy 7.4.2.8 (A))”.

INITIAL INVENTORY AND MAPPING

IBCs Link

Proposed Definition of Important Habitat

“Important habitat is defined as **habitats that support important flora and fauna**, including deer winter, summer, and fawning ranges and migration routes; stream, river, and lakeshore habitat; fish spawning areas; seeps, springs, and wetlands; **oak woodlands**; large expanses of native vegetation; and **other unique plant, fish, and wildlife habitats.**” (Source: DEIR, p5.12-45)

Additions to INRMP list
(Inventory, Map, Conserve)

1. **Habitats that support important flora and fauna.**
Habitat that supports common plants and animals?
2. **Oak Woodlands.** 180,000 acres of oak woodlands not mapped as PCAs in OWMP and included in Policy 7.4.4.4 Option A and B
3. **Unique plant, fish and wildlife habitats.** 2 Google hits
EDC/8,500 for “unique habitat”
“Every organism has a unique habitat that provides for its needs. Animals and plants that live in a particular area and share the resources form a community. Within a community, organisms all have a unique niche, or role they fill to keep the community healthy.

Subsumes Initial Inventory and Mapping
Circle Around Initial Inventory Map

Submitted by J. Brunello
3.16.10
at Board Hearing of # 2221

**EL DORADO COUNTY
DRAFT INITIAL INVENTORY
FOR INRMP**

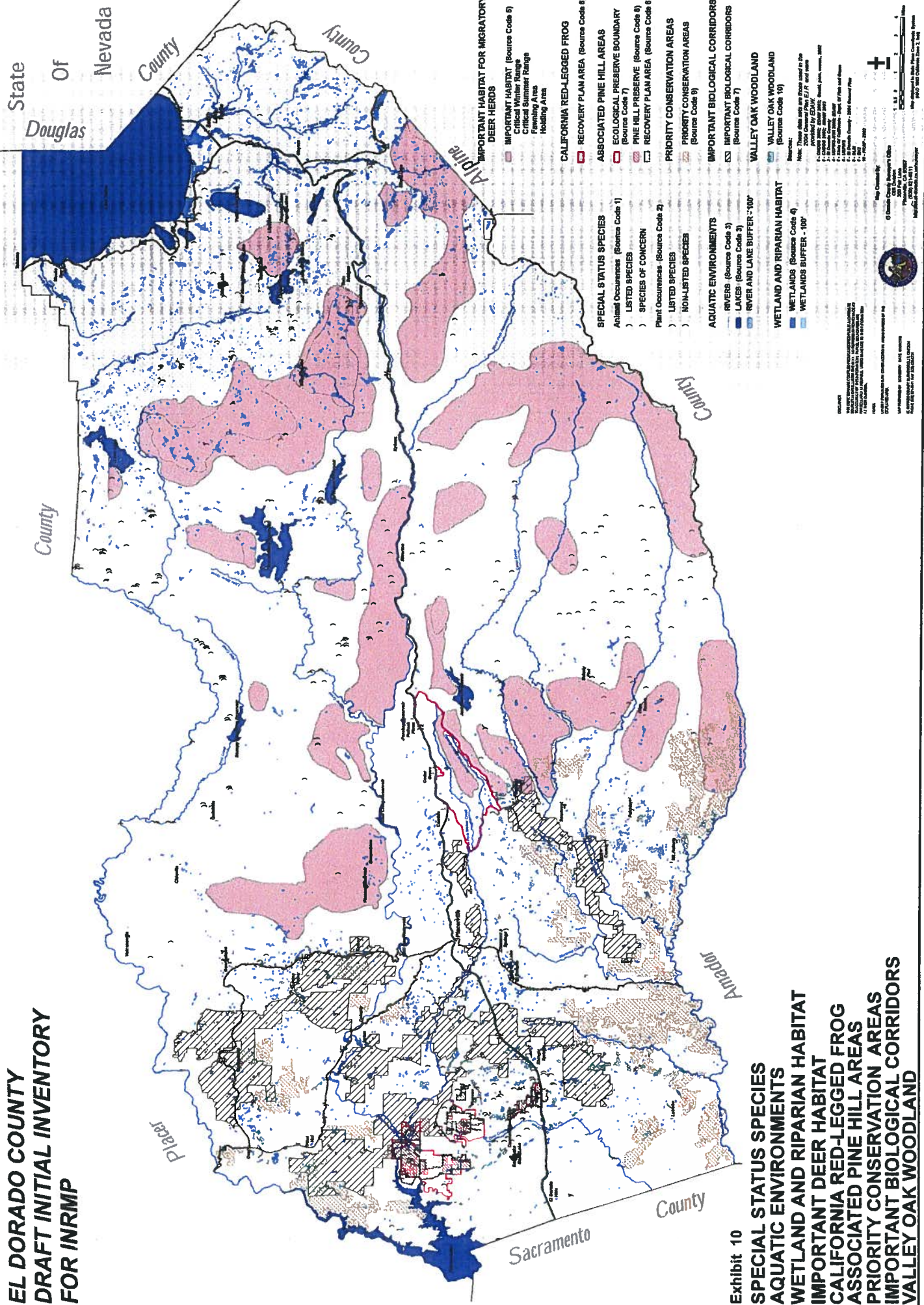


Exhibit 10
SPECIAL STATUS SPECIES
AQUATIC ENVIRONMENTS
WETLAND AND RIPARIAN HABITAT
IMPORTANT DEER HABITAT
CALIFORNIA RED-LEGGED FROG
PRIORITY CONSERVATION AREAS
IMPORTANT BIOLOGICAL CORRIDORS
VALLEY OAK WOODLAND

State of Nevada
Douglas County
Alpine County
Sacramento County
Placer County
Amador County

IMPORTANT HABITAT FOR MIGRATORY DEER HERDS

- IMPORTANT HABITAT (Source Code 5)
- Critical Winter Range
- Critical Summer Range
- Holding Area

CALIFORNIA RED-LEGGED FROG

- RECOVERY PLAN AREA (Source Code 6)

ASSOCIATED PINE HILL AREAS

- ECOLOGICAL PRESERVE BOUNDARY (Source Code 7)
- PINE HILL PRESERVE (Source Code 8)
- RECOVERY PLAN AREA (Source Code 6)

PRIORITY CONSERVATION AREAS

- PRIORITY CONSERVATION AREAS (Source Code 9)

IMPORTANT BIOLOGICAL CORRIDORS

- IMPORTANT BIOLOGICAL CORRIDORS (Source Code 7)
- VALLEY OAK WOODLAND (Source Code 10)
- VALLEY OAK WOODLAND (Source Code 10)

WETLAND AND RIPARIAN HABITAT

- WETLANDS (Source Code 4)
- WETLANDS BUFFER - 100'

AQUATIC ENVIRONMENTS

- RIVERS (Source Code 3)
- LAKES (Source Code 3)
- RIVER AND LAKE BUFFER - 100'

SPECIAL STATUS SPECIES

- Animal Occurrences (Source Code 1)
- LISTED SPECIES
- SPECIES OF CONCERN
- Plant Occurrences (Source Code 2)
- LISTED SPECIES
- NON-LISTED SPECIES

Map Created by:
 G. Charles Deibel, Supervisor
 El Dorado County
 Placerville, CA 95367
 Date: 10/15/2007
 Map Scale: 1" = 1 Mile

Scale: 1" = 1 Mile
 0 1 2 3 4 5 Miles

North Arrow

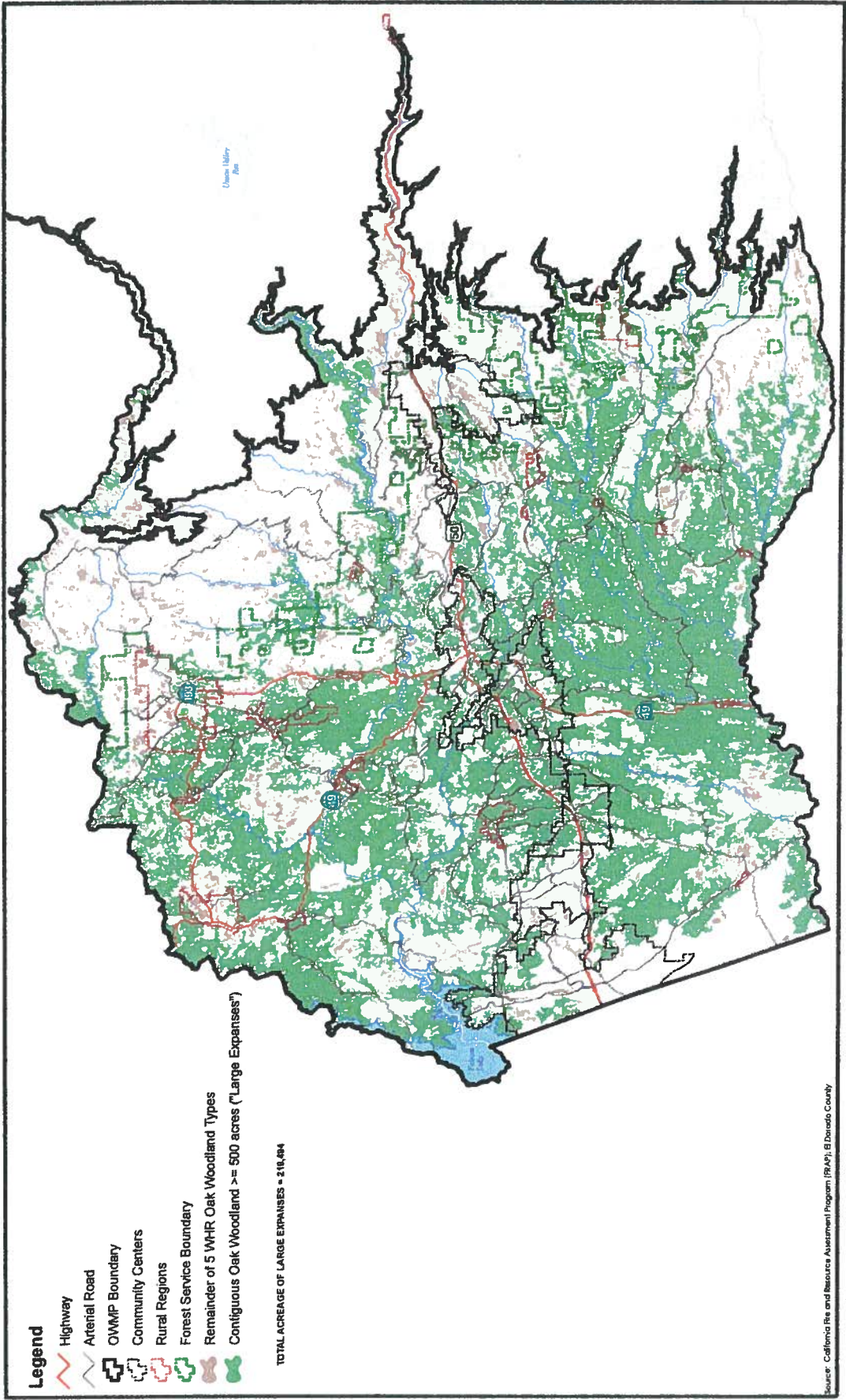
Legend:
 These areas are those used in the Initial Inventory of the State of Nevada, as provided by EDWY.
 1. Critical Winter Range
 2. Critical Summer Range
 3. Riparian Corridor
 4. Wetlands
 5. Important Habitat for Migratory Deer Herds
 6. Recovery Plan Area
 7. Important Biological Corridor
 8. Pine Hill Preserve
 9. Priority Conservation Area
 10. Valley Oak Woodland

Source:
 1. Critical Winter Range - 2007
 2. Critical Summer Range - 2007
 3. Riparian Corridor - 2007
 4. Wetlands - 2007
 5. Important Habitat for Migratory Deer Herds - 2007
 6. Recovery Plan Area - 2007
 7. Important Biological Corridor - 2007
 8. Pine Hill Preserve - 2007
 9. Priority Conservation Area - 2007
 10. Valley Oak Woodland - 2007

Map Scale: 1" = 1 Mile
 0 1 2 3 4 5 Miles

North Arrow

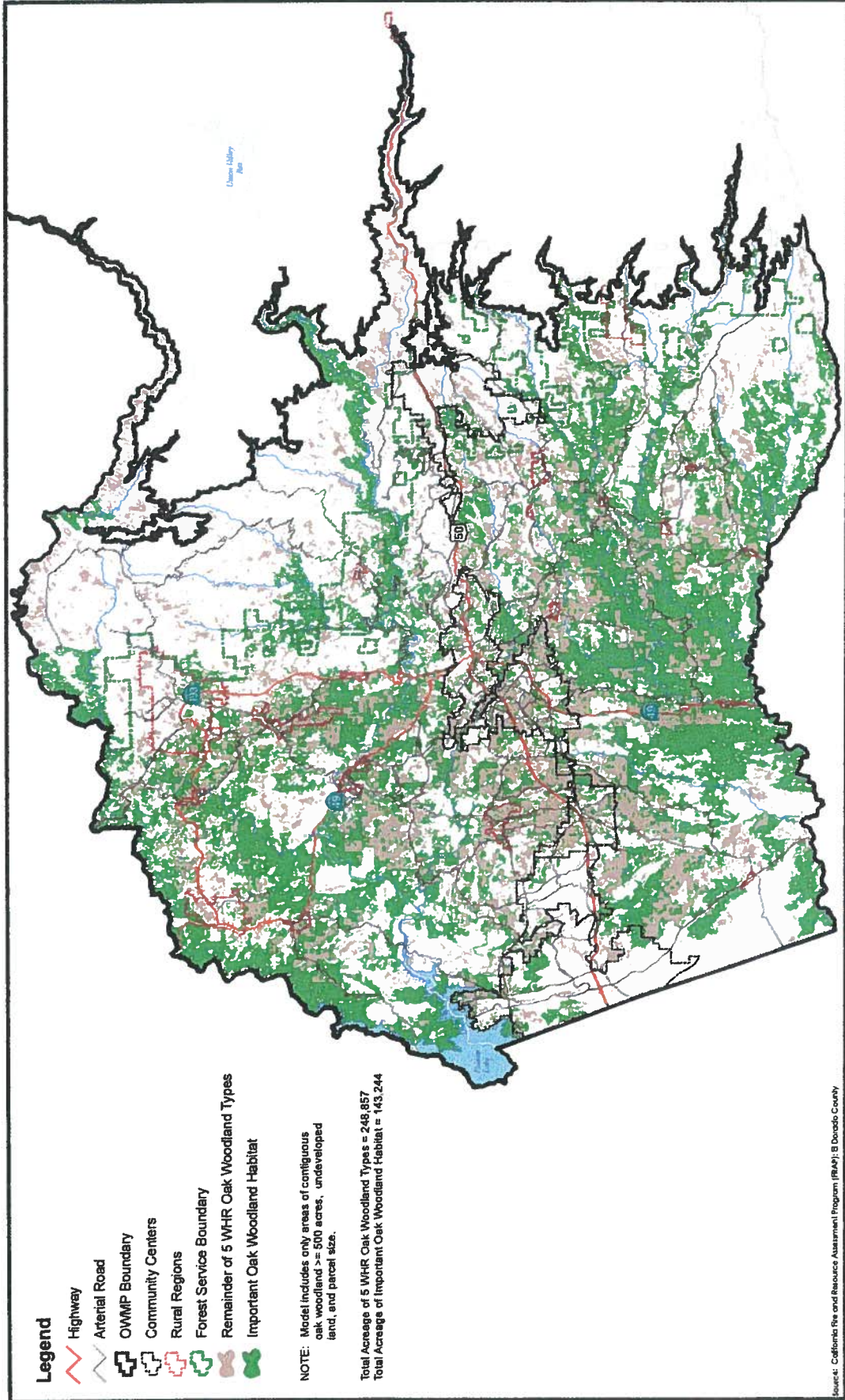
Legend:
 These areas are those used in the Initial Inventory of the State of Nevada, as provided by EDWY.
 1. Critical Winter Range
 2. Critical Summer Range
 3. Riparian Corridor
 4. Wetlands
 5. Important Habitat for Migratory Deer Herds
 6. Recovery Plan Area
 7. Important Biological Corridor
 8. Pine Hill Preserve
 9. Priority Conservation Area
 10. Valley Oak Woodland



Preliminary Draft

MAP 2 - LARGE EXPANSES OF OAK WOODLAND





17: (GIS)E:\Dando_County\Map\OWMP\Standalone\Map\OWMP\OWMP.mxd - 1/23/2007 @ 3:01:21 PM

Preliminary Draft

MAP 6 - IMPORTANT OAK WOODLAND HABITAT (WITHOUT CORRIDORS)

