

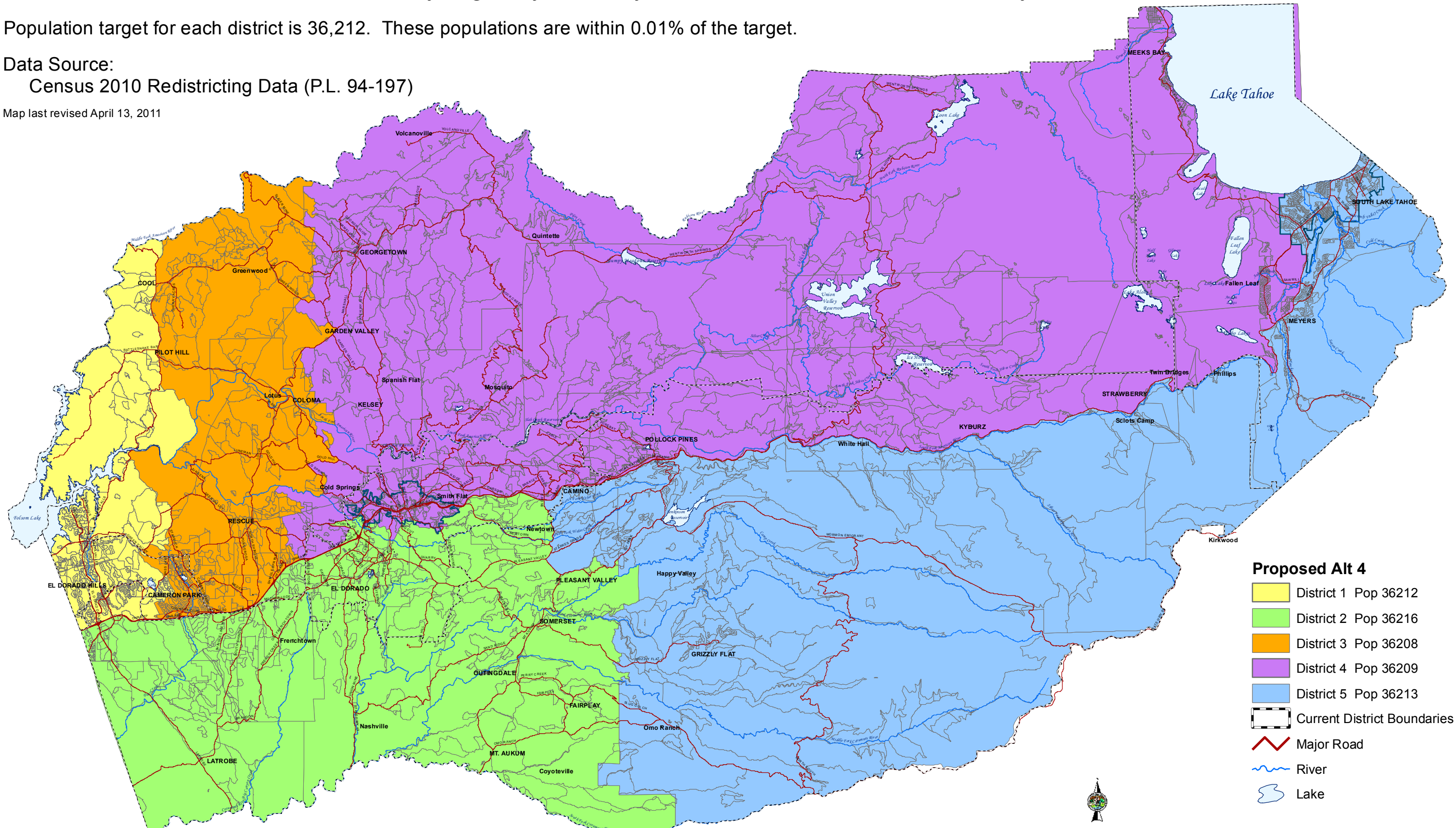
Alternative 4 Districts divided by Highway 50 - City of Placerville in District 4 and City of South Lake Tahoe in District 5.

Population target for each district is 36,212. These populations are within 0.01% of the target.

Data Source:

Census 2010 Redistricting Data (P.L. 94-197)

Map last revised April 13, 2011



Proposed Alt 4

- District 1 Pop 36212
- District 2 Pop 36216
- District 3 Pop 36208
- District 4 Pop 36209
- District 5 Pop 36213
- Current District Boundaries
- Major Road
- River
- Lake

0 3 6
Miles

Map displayed in State Plane Coordinate System
(NAD 1983 California Zone 2, feet)

County of El Dorado
State of California