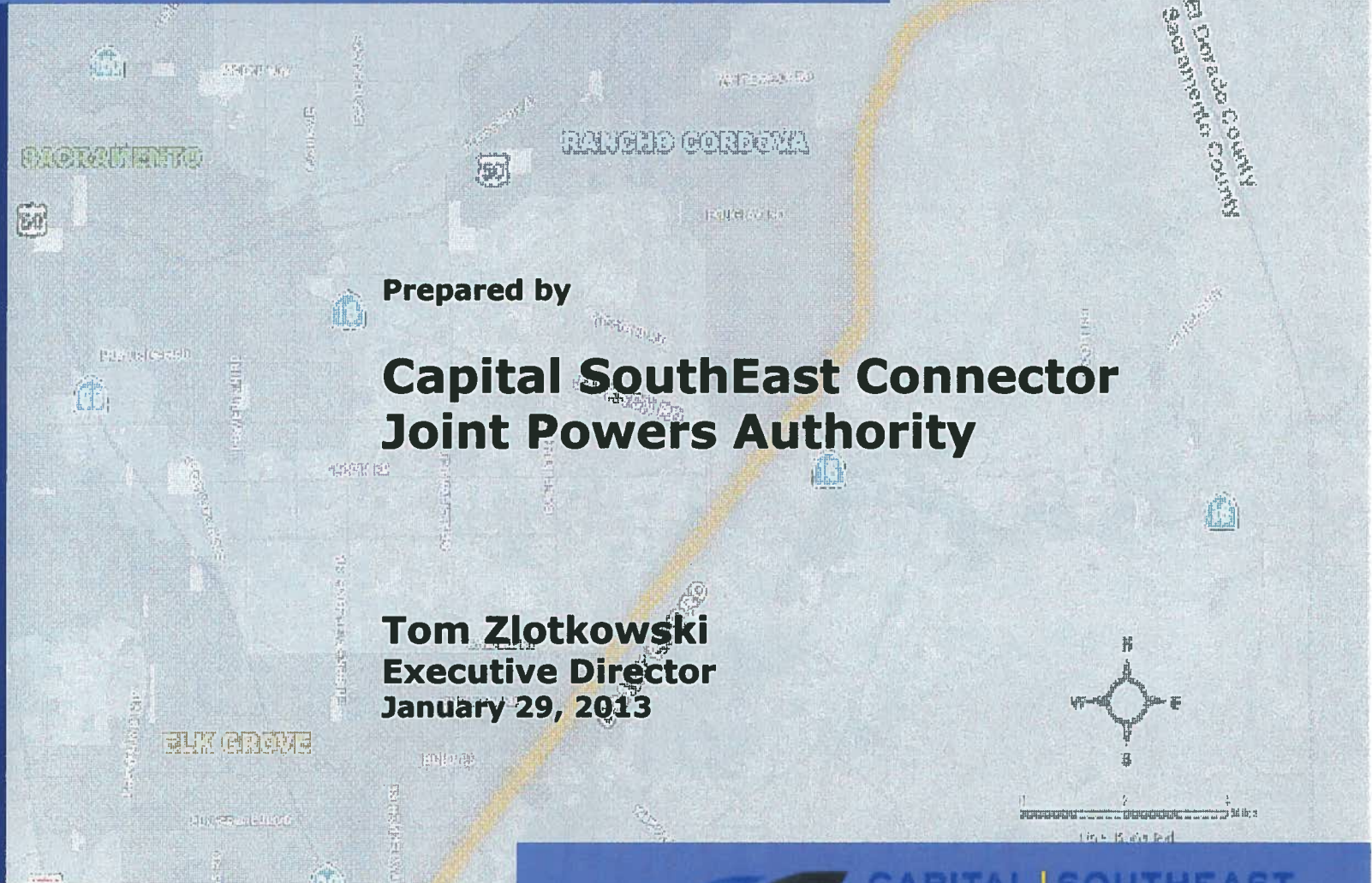


# Presentation

## El Dorado County Board of Supervisors



Prepared by

### Capital SouthEast Connector Joint Powers Authority

**Tom Zlotkowski**  
Executive Director  
January 29, 2013

Submitted by T. Zlotkowski

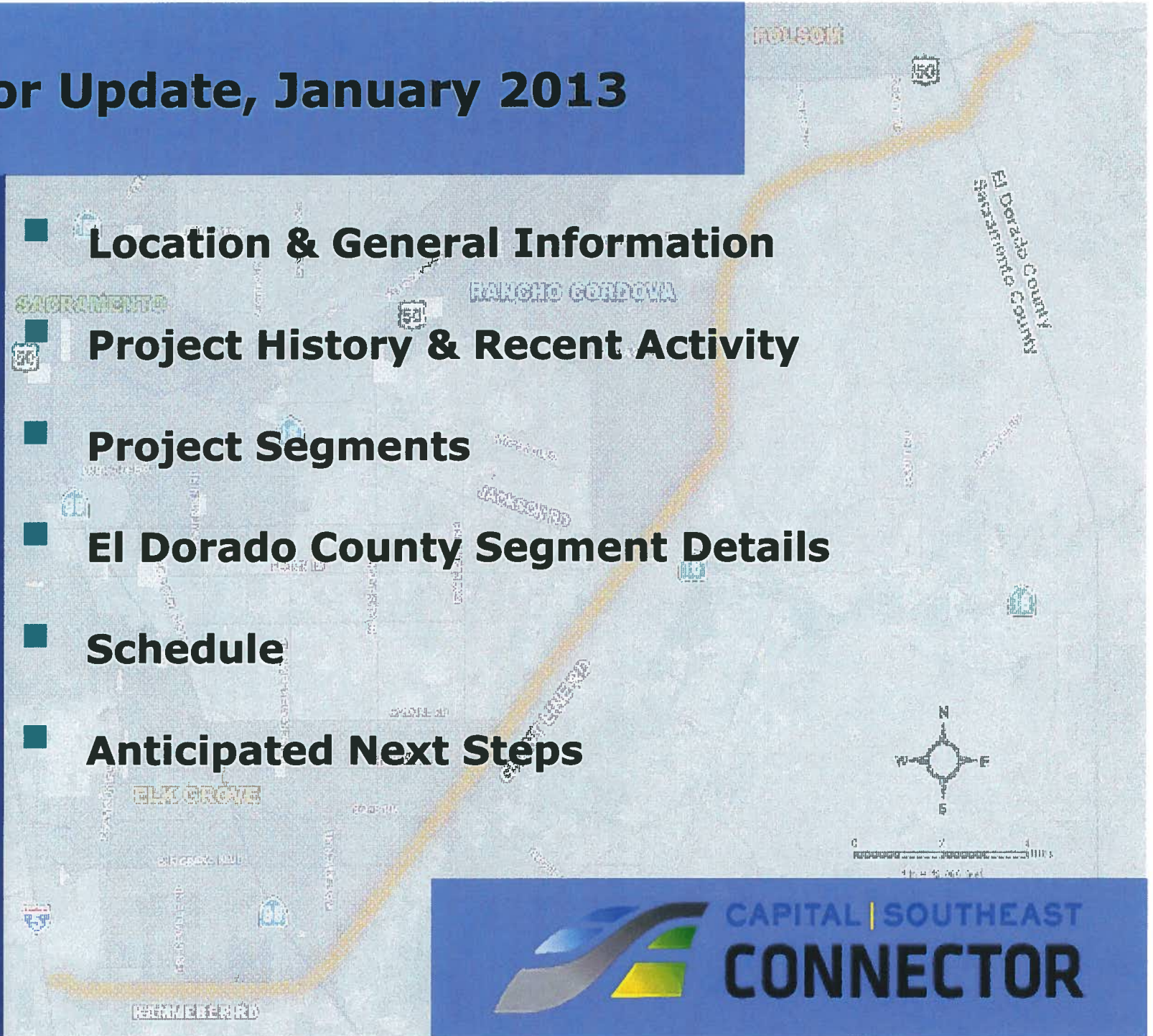
at Board Hearing of 1-29-13

# 21



# Connector Update, January 2013

- **Location & General Information**
- **Project History & Recent Activity**
- **Project Segments**
- **El Dorado County Segment Details**
- **Schedule**
- **Anticipated Next Steps**



# Project Location

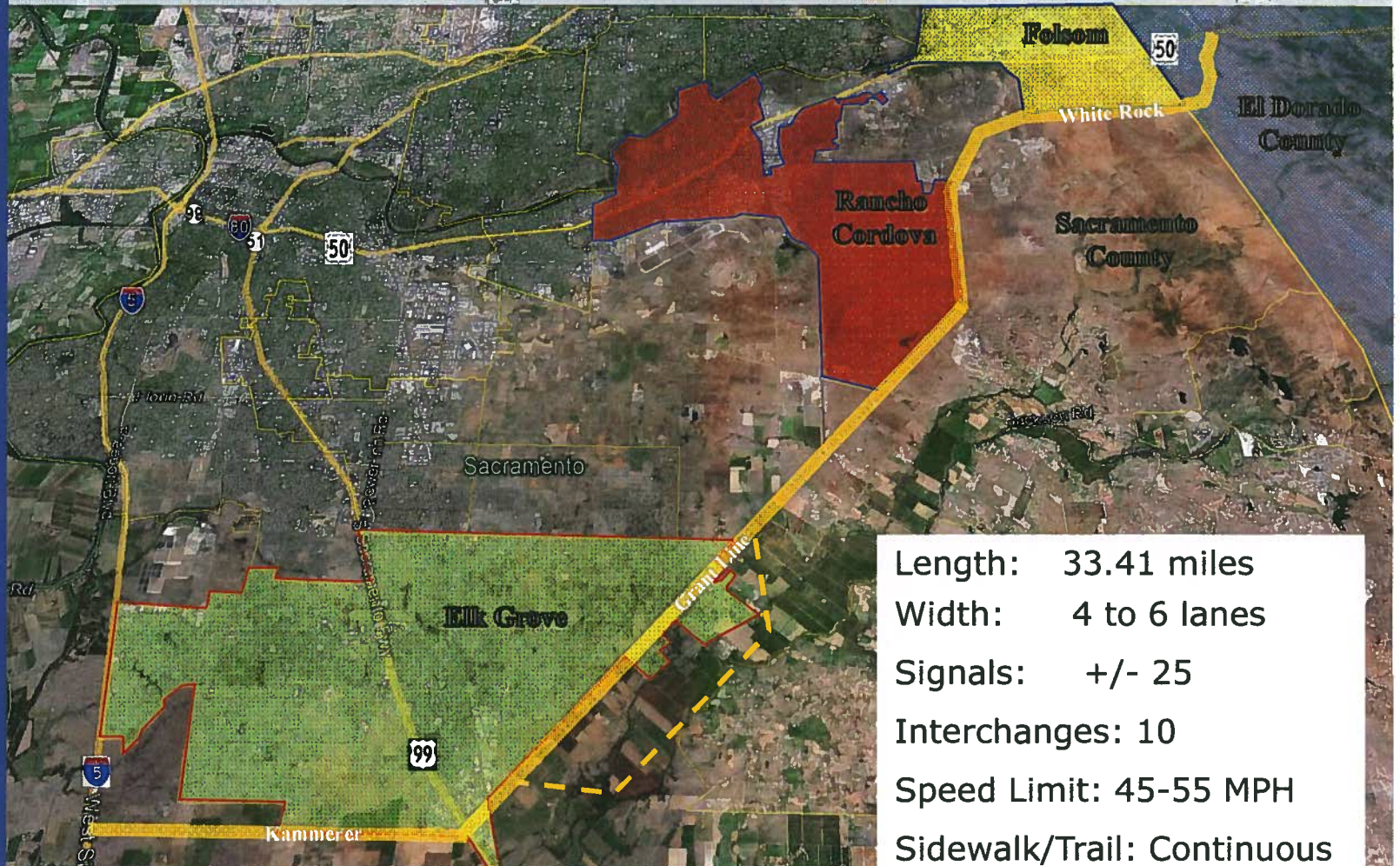
## JPA Southeast Connector:

- From I-5 south of Elk Grove (Hood Franklin Road) through Rancho Cordova to Highway 50 in El Dorado County, just east of El Dorado Hills (Silva Valley Parkway)

## Alignment



## Kammerer/Grant Line/White Rock Roads



Length: 33.41 miles  
Width: 4 to 6 lanes  
Signals: +/- 25  
Interchanges: 10  
Speed Limit: 45-55 MPH  
Sidewalk/Trail: Continuous

# Project History

## Studied Repeatedly by Caltrans in mid-90s

Studies abandoned due to cost and priorities

## JPA History

2004 Sacramento County Sales Tax Extension

Project Alignments/Governance recommended by SACOG (2005-06)

Joint Powers Authority Formed (2007)

## JPA Makeup

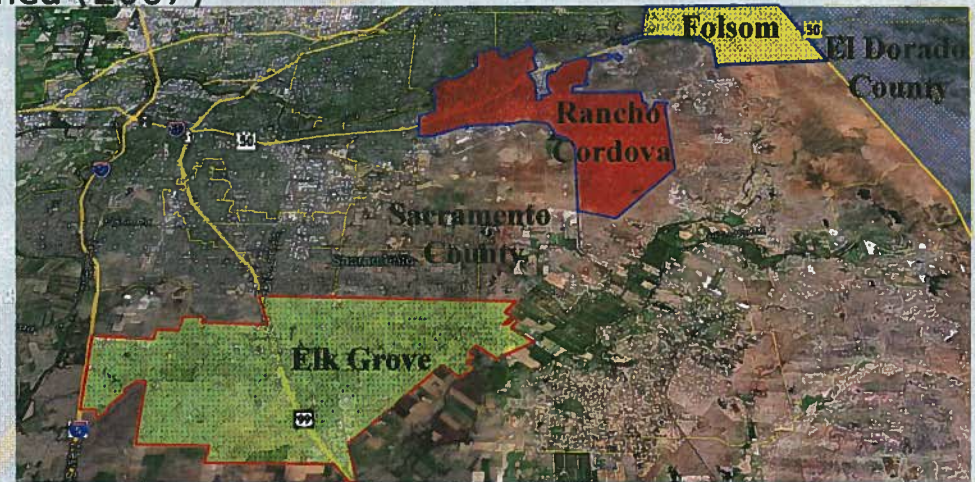
Sacramento County

El Dorado County

City of Elk Grove

City of Rancho Cordova

City of Folsom



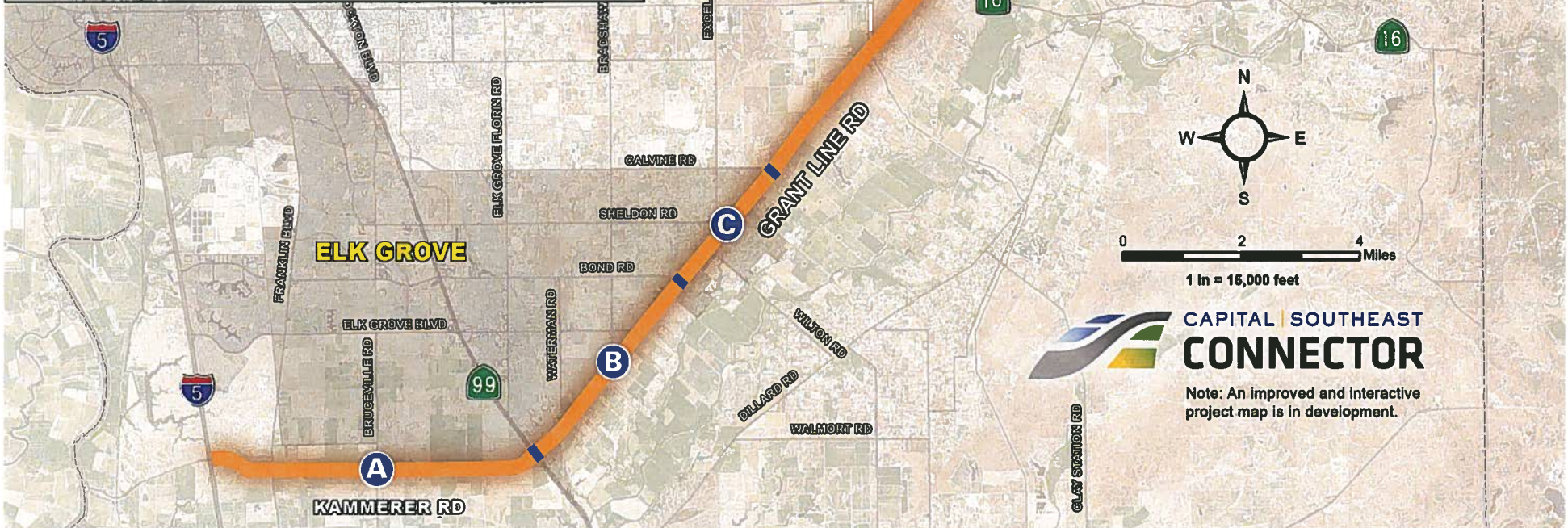
CAPITAL | SOUTHEAST  
**CONNECTOR**

# Recent Activity

- **2006-2010 Alternatives Analysis for General Alignment**
- **Public Meetings to Date – Total 45+**
- **Monthly Project Development Meetings with Jurisdiction Staff and Others**
- **2010 Draft Program Environmental Impact Report (PEIR)**
- **2011 Certification of PEIR & Selection of Preferred Alignment**
- **2012 Draft Plan of Finance, Cost Estimates, Design Guidelines, Committee Work, Environmental Impact Report, ECOS Settlement**
- **MOU with EDC regarding Condemnation/Debt**

# Project Segments

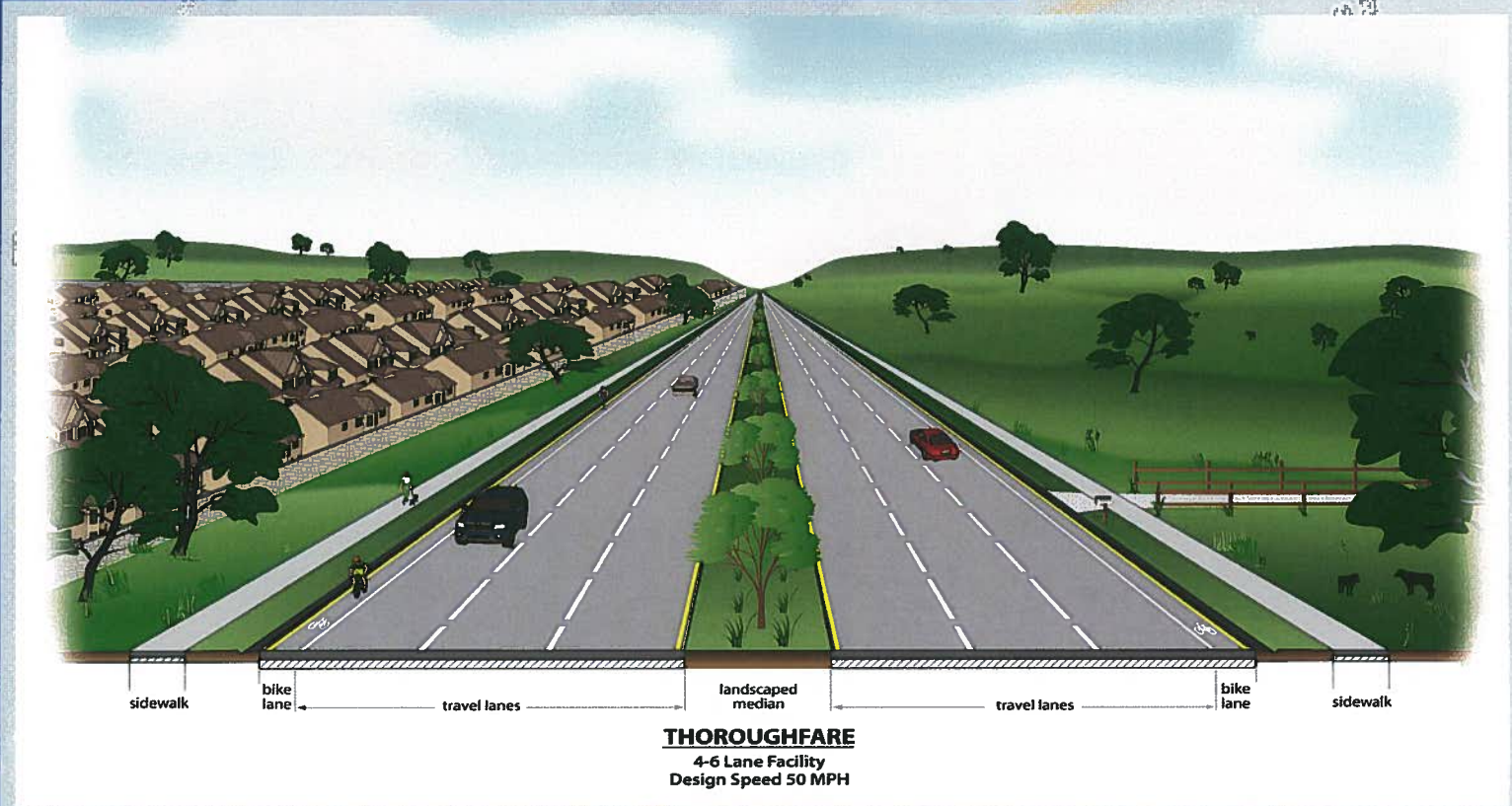
SEGMENT	DESCRIPTION
A	4 lane expressway, on Kammerer Rd from the I-5/Hood Franklin IC to Bruceville Rd & 6 lane Thoroughfare from Bruceville Rd to SR99
B	4 to 6 lane thoroughfare, from SR 99 to Bond Rd
C	4 lane roadway, on Grant Line Rd from Bond Rd to Calvin Rd (Sheldon Area)
D	4 to 6 lane expressway, on Grant Line/White Rock Rd from Calvin Rd to the Sacramento-El Dorado County line
E	4 to 6 lane thoroughfare, on White Rock Rd from the County line to US 50/Silva Valley Pkwy IC



**CAPITAL SOUTHEAST CONNECTOR**  
 Note: An improved and interactive project map is in development.

# Cross Section

POLEBRIN



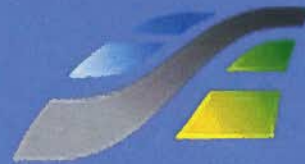
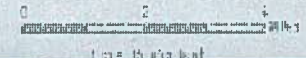
sidewalk    bike lane    travel lanes    landscaped median    travel lanes    bike lane    sidewalk

**THOROUGHFARE**  
4-6 Lane Facility  
Design Speed 50 MPH

BLK CROWIE

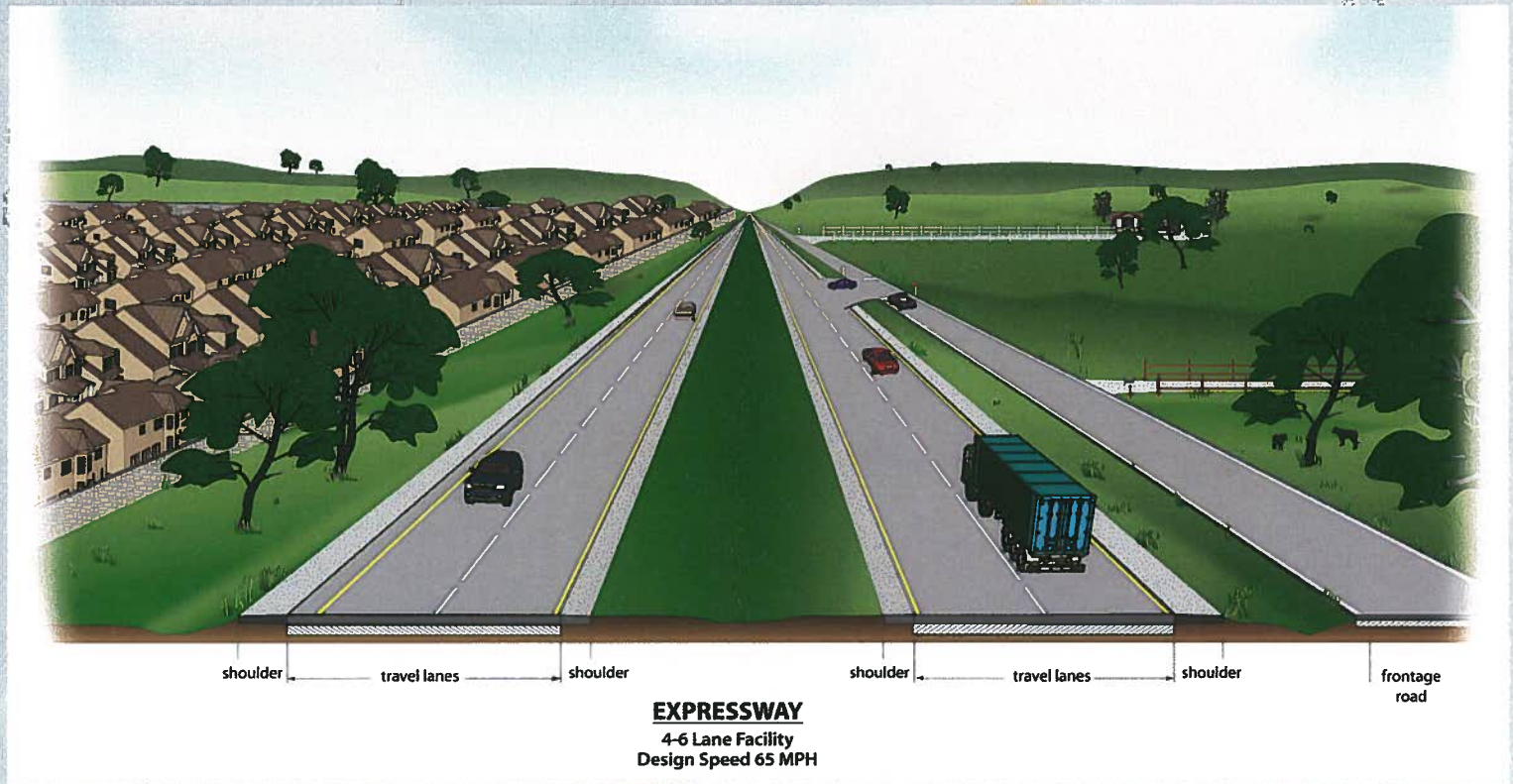
W. STATE ST.

W. MILLER ST.



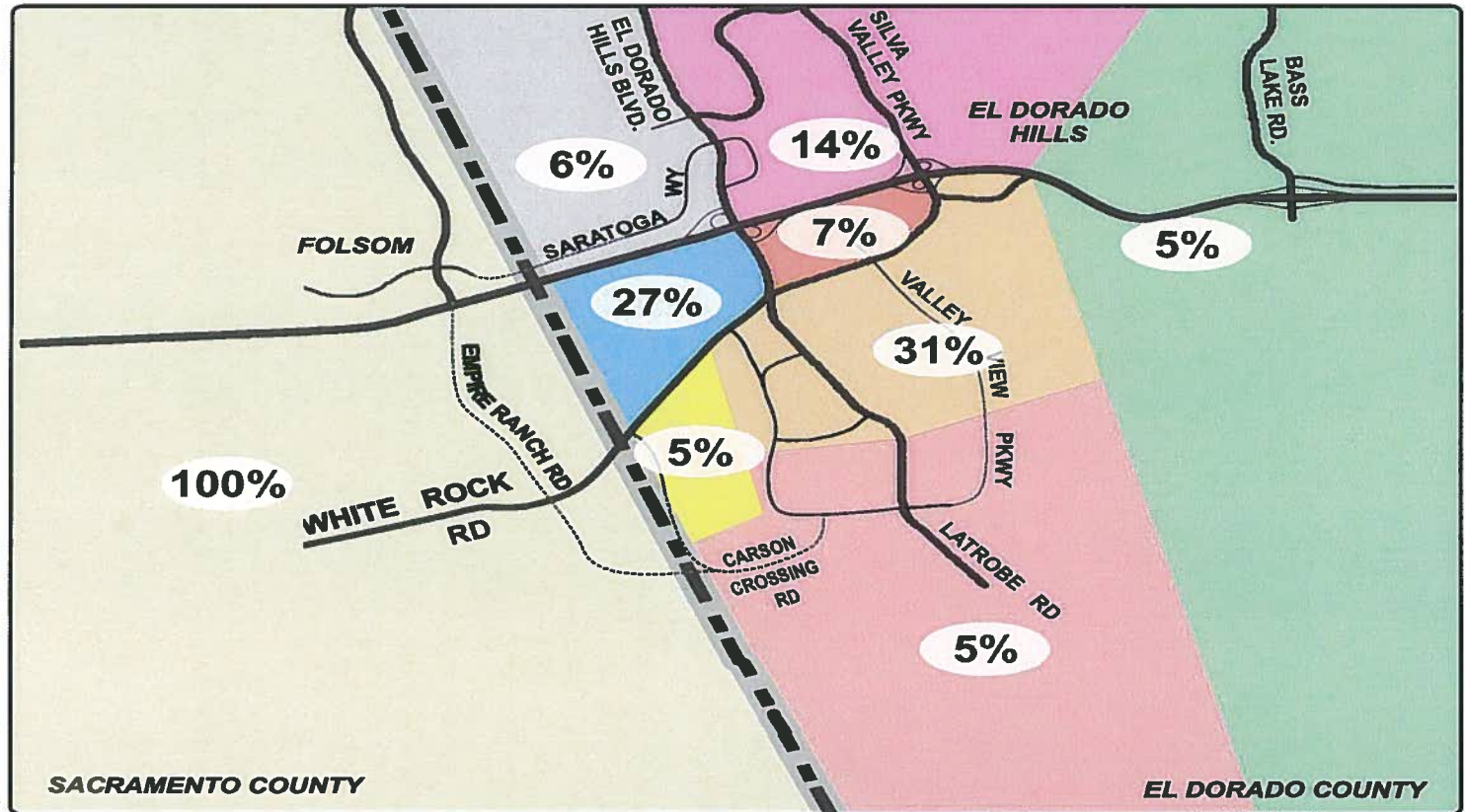
CAPITAL | SOUTHEAST  
**CONNECTOR**

# Cross Section





# El Dorado County Segment Details



**DKS Associates**  
TRANSPORTATION SOLUTIONS

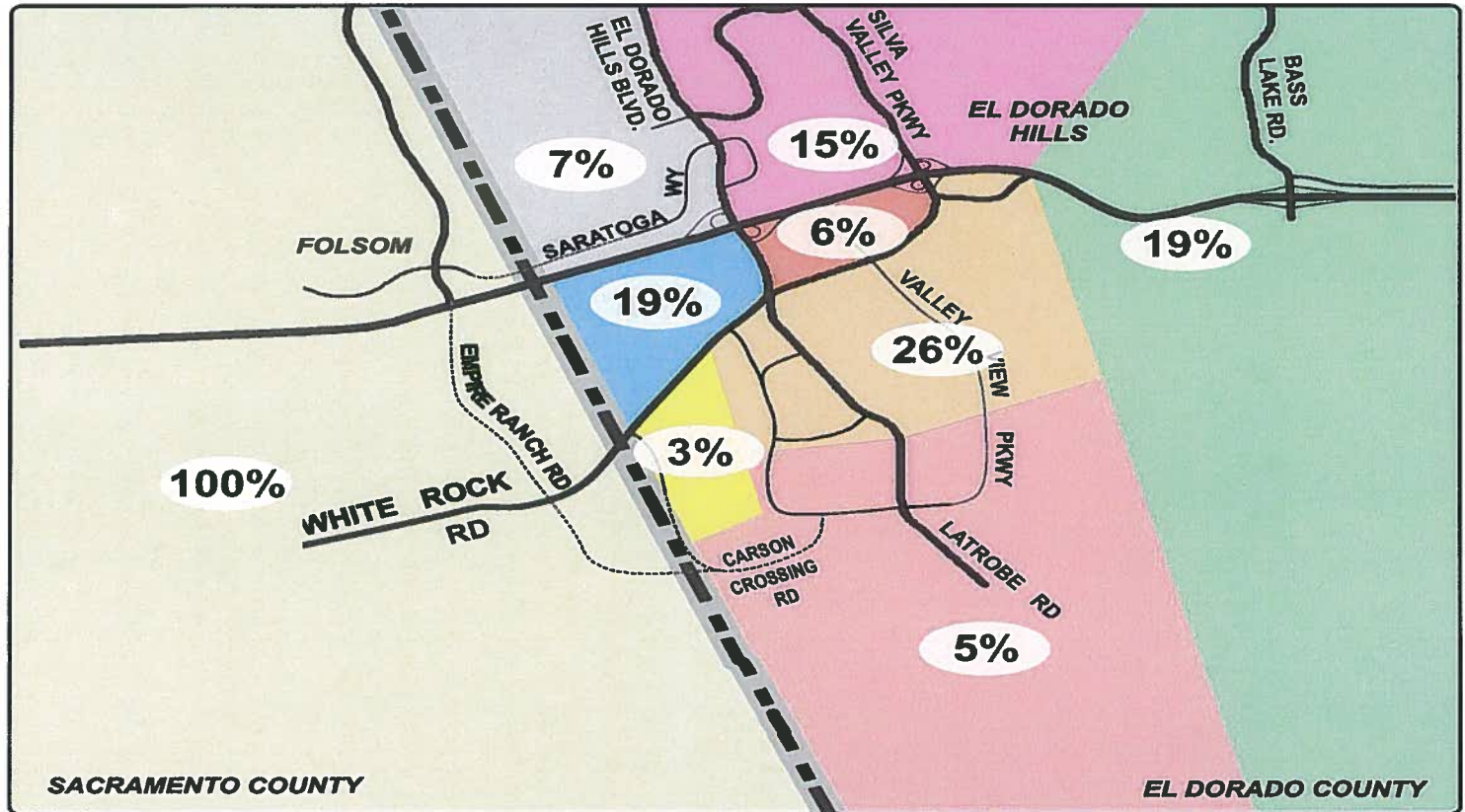
Percent Distribution of Traffic Using White Rock Rd, East of Empire Ranch Rd  
Year 2045 No Build Alternative (General Plans and MTP)

FOLSOM SPECIFIC PLAN, CITY OF FOLSOM

2045 Traffic Distribution  
w/o Connector Project



# El Dorado County Segment Details



**DKS Associates**  
TRANSPORTATION SOLUTIONS

Percent Distribution of Traffic Using White Rock Rd, East of Empire Ranch Rd  
Year 2045 High Alternative (General Plans and MTP)

FOLSOM SPECIFIC PLAN, CITY OF FOLSOM

2045 Traffic Distribution  
with Connector Project



# El Dorado County Segment Details

## Alignment

Planned EDC: White Rock Road (Co. line to Silva/50)

Proposed CSC: White Rock Road (Co. line to Silva/50)

## Length

Planned EDC: 2.21 miles

Proposed CSC: 2.21 miles

## Lanes

Planned EDC: 4 lanes w/o Latrobe

6 lanes e/o Latrobe

Proposed CSC: 4 lanes w/o Latrobe

6 lanes e/o Latrobe

## Timing

Planned EDC: Varies (Majority beyond 2019)

Proposed CSC: 2018-2023 (depending on sequencing)

## Funding

Planned EDC: 100% TIM fees (No advance financing)

Proposed CSC: 100% TIM fees (CSC Phase 1 financing)

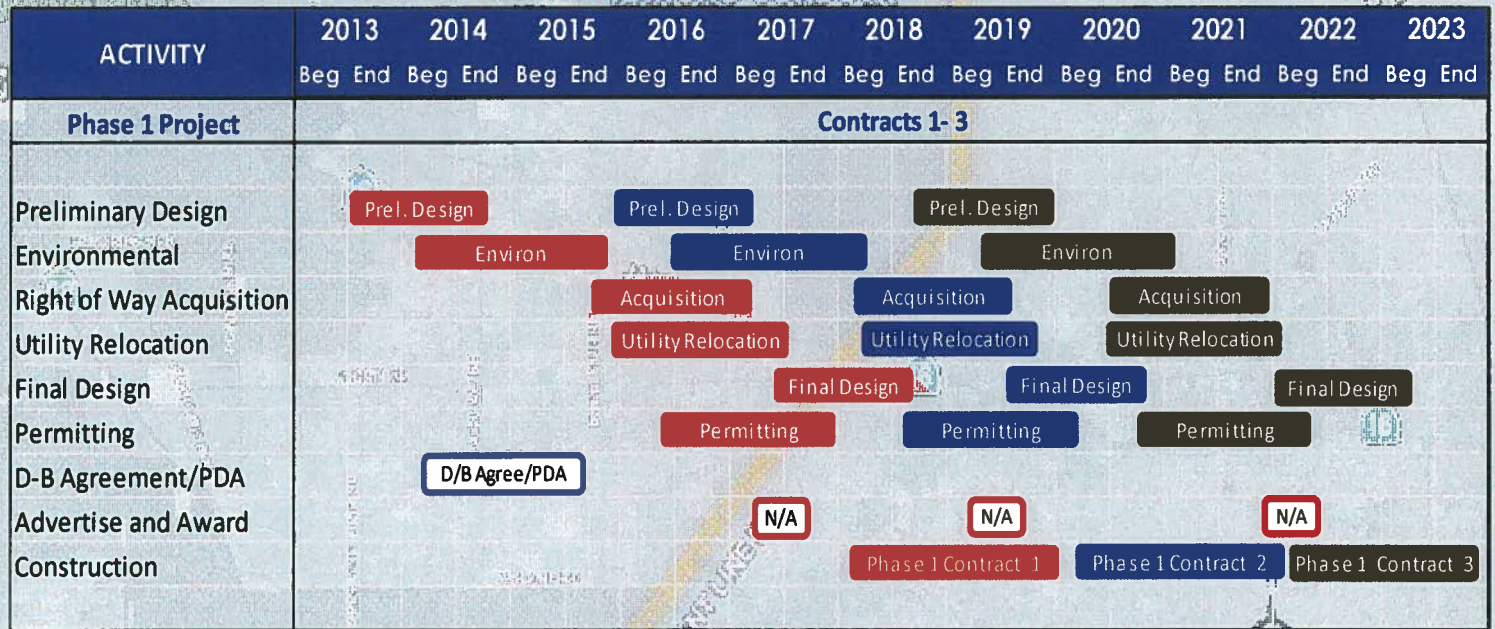


# Proposed Project Schedule

Contract	Segment(s)	Notice to Proceed	Estimated Completion Date
1	<b>Phase 1 Project: (Base Project) in 3 Contracts</b>	Jan-18	Dec-19
2		Jan-20	Dec-21
3		Jan-22	Dec-23
4	<b>Phase 2 Contract 4: Interchanges and mainline widening</b>	Jan-27	Dec-28
5	<b>Phase 2 Contract 5: Interchanges and mainline widening</b>	Jan-32	Dec-33
6	<b>Phase 2 Contract 6: Interchanges and mainline widening</b>	Jan-38	Dec-39



# Proposed Project Schedule

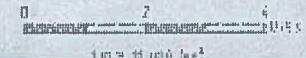
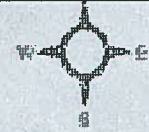


# Project Implementation

Element	Segment A		Segment B	Segment C	Segment D			Segment E	
	A1	A2	SR 99 to Bond	Bond to Calvine	D1	D2	D3	E1	E2
	I-5 to Bruceville	Bruceville to SR 99			Calvine to Jackson	Jackson to White Rock	White Rock to EDC	EDC Line to Latrobe	Latrobe to US 50/SVP
Existing Traffic	N/A	●	◐	●	◐	◐	◐	○	●
Future Traffic	◐	●	◐	◐	○	●	○	●	●
Environmental / Permitting	◐	◐	○	○	◐	◐	◐	○	○
Construction Costs	◐	◐	◐	◐	○	◐	●	●	●
Safety/Accident Considerations	●	○	●	○	○	●	●	○	◐
Fair Share Contributions	◐	●	◐	◐	◐	◐	●	●	●
Ease of Construction	◐	◐	●	●	◐	●	●	●	○

Indicators are relative to each other

● Higher Rating   ○ Neutral   ● Lower Rating

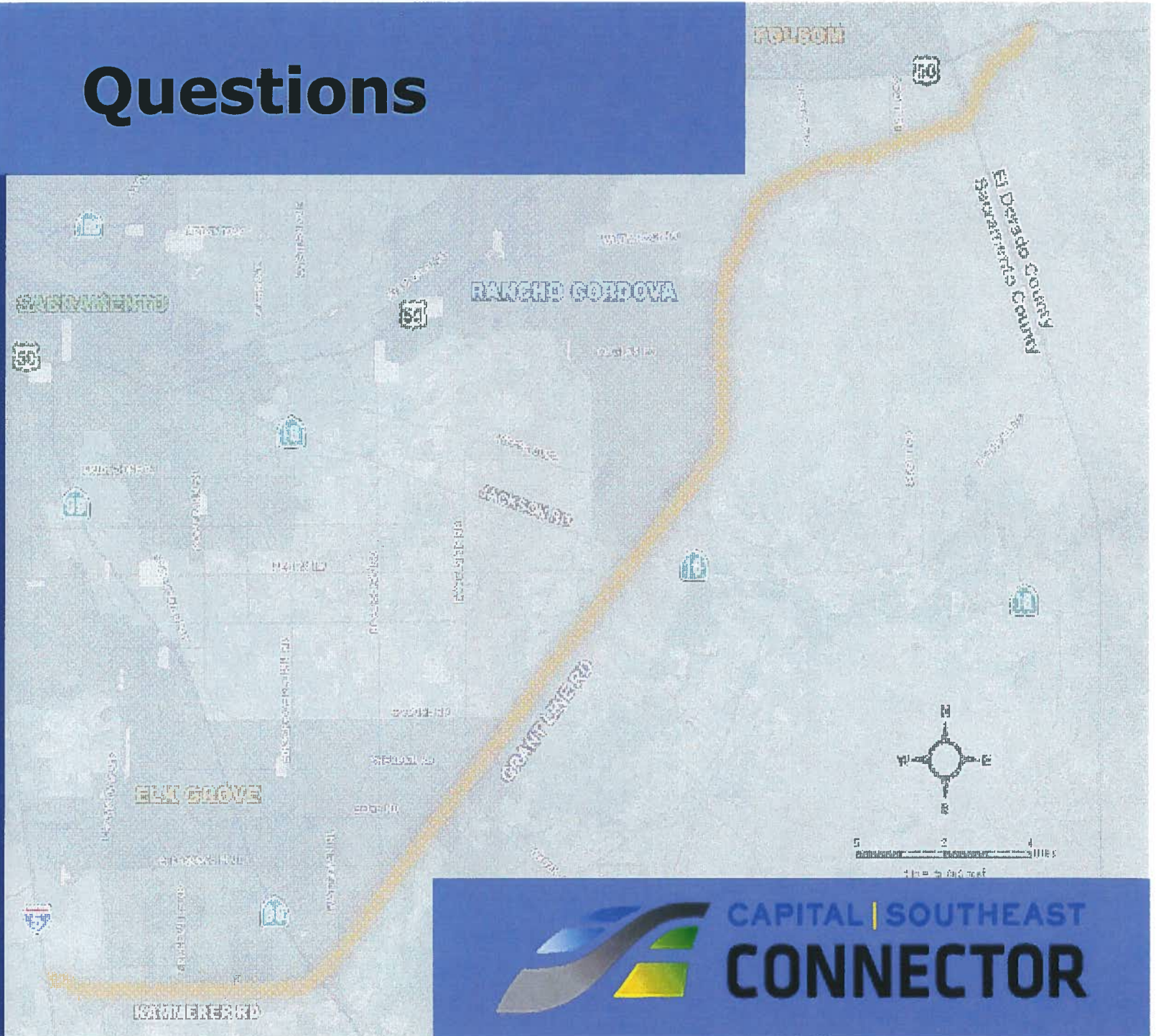


# Anticipated Next Steps

- ❑ - Presentation and approval of Project Design Guidelines
- ❑ - Approval of 2012 Initial Plan of Finance
- ❑ - Development and approval of December EDC MOU
- ❑ - Initiation of Formal General Plan Amendment Process
- ❑ - Development and execution of reciprocal use agreement
- ❑ - Update on the Plan of Finance



# Questions



CAPITAL | SOUTHEAST  
**CONNECTOR**