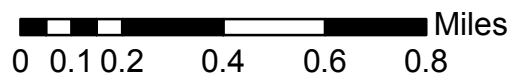
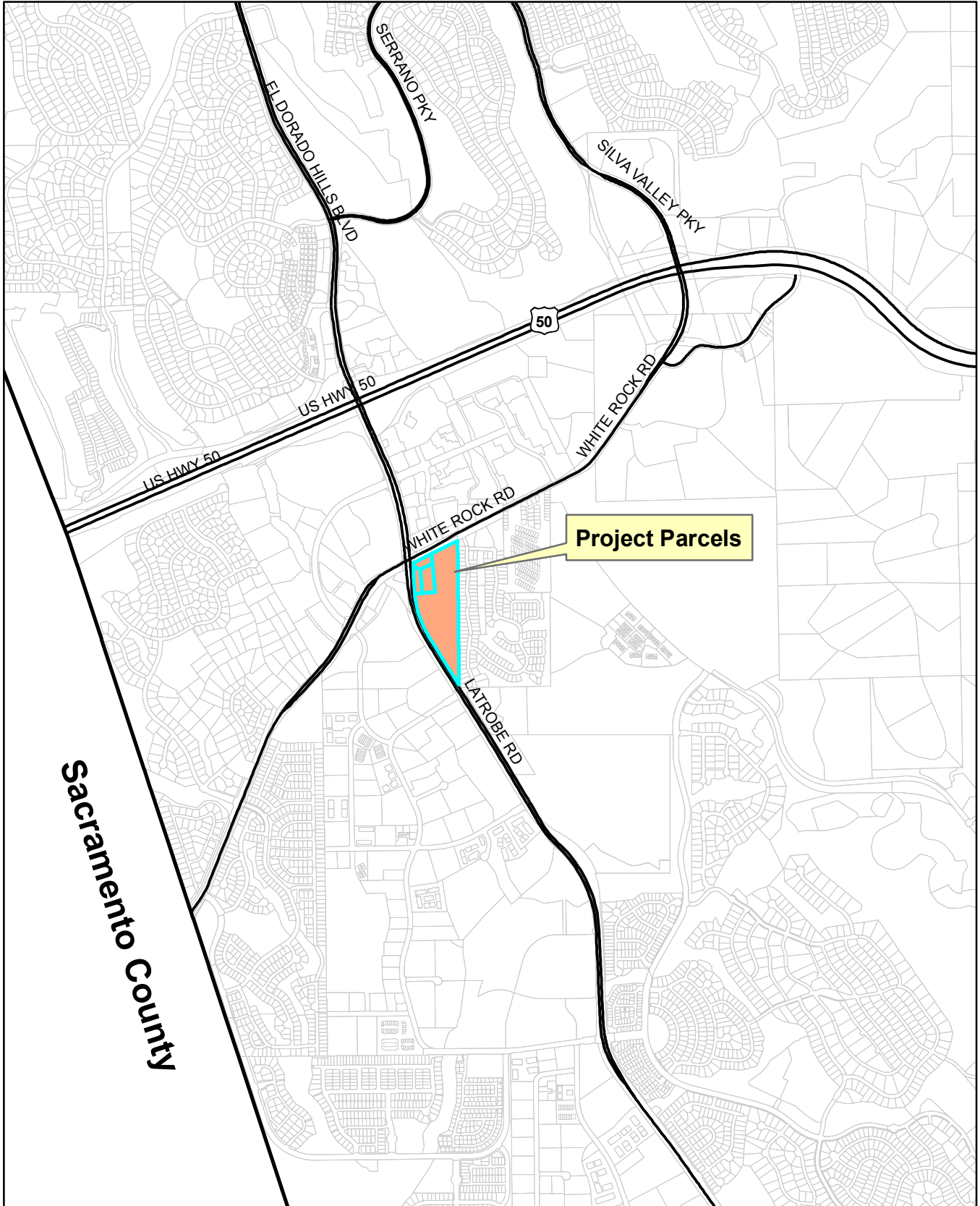
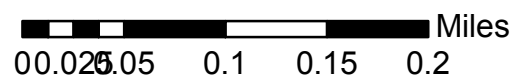
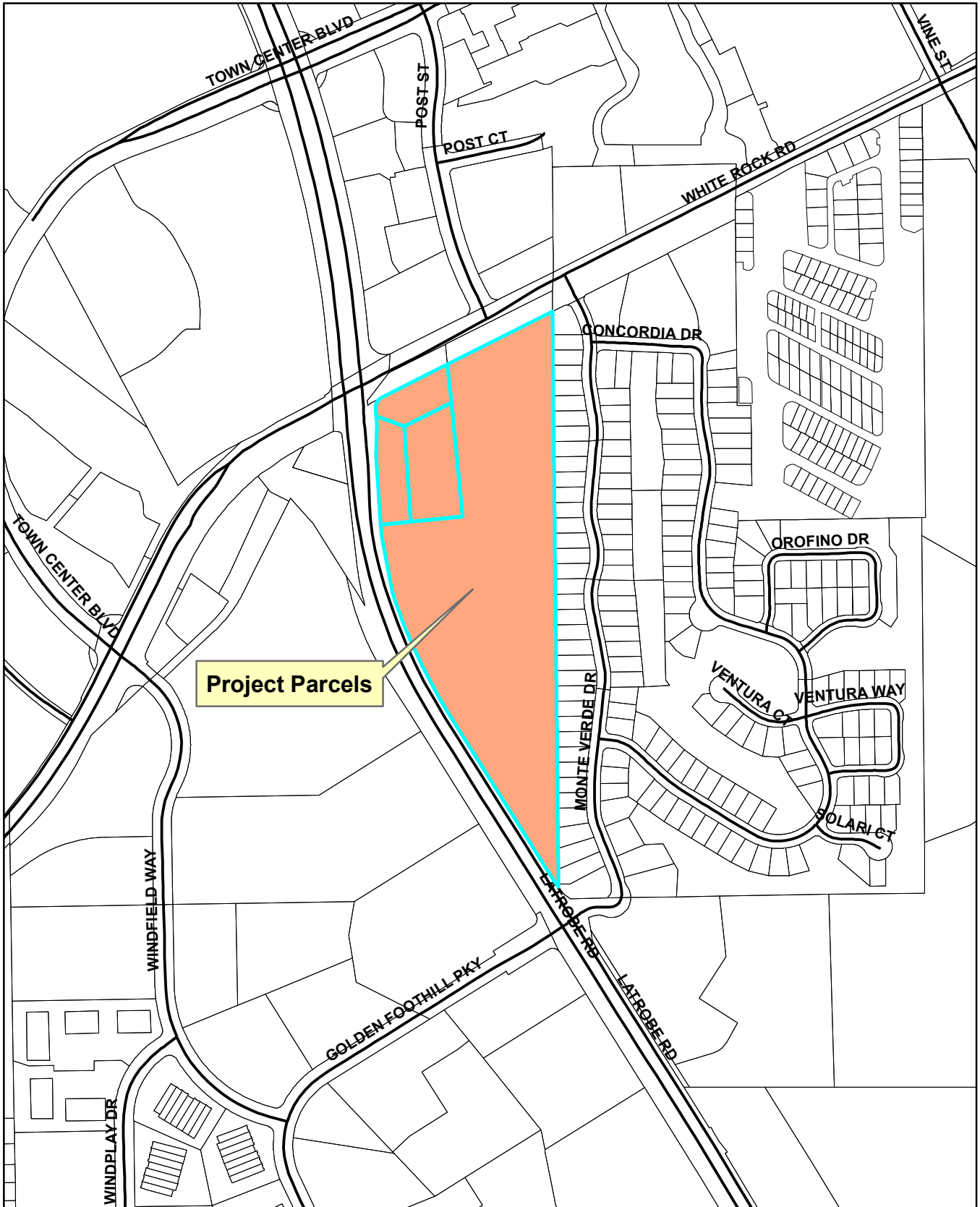


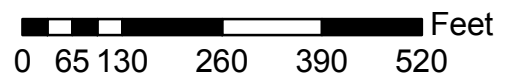
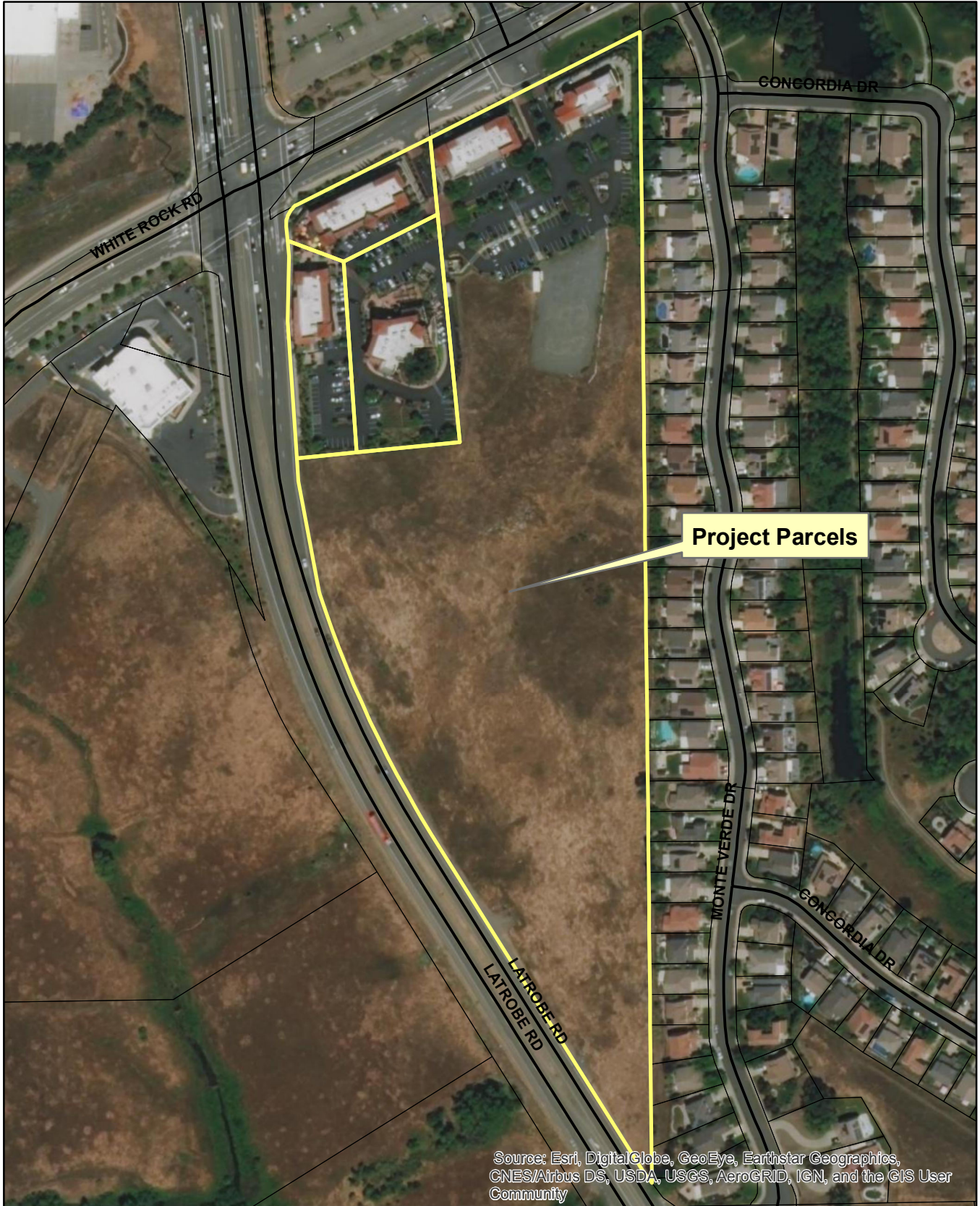
# Z15-0002/P15-0006/PD15-0004/S17-0015 EXHIBIT A - LOCATION MAP



# Z15-0002/P15-0006/PD15-0004/S17-0015 EXHIBIT B - VICINITY MAP

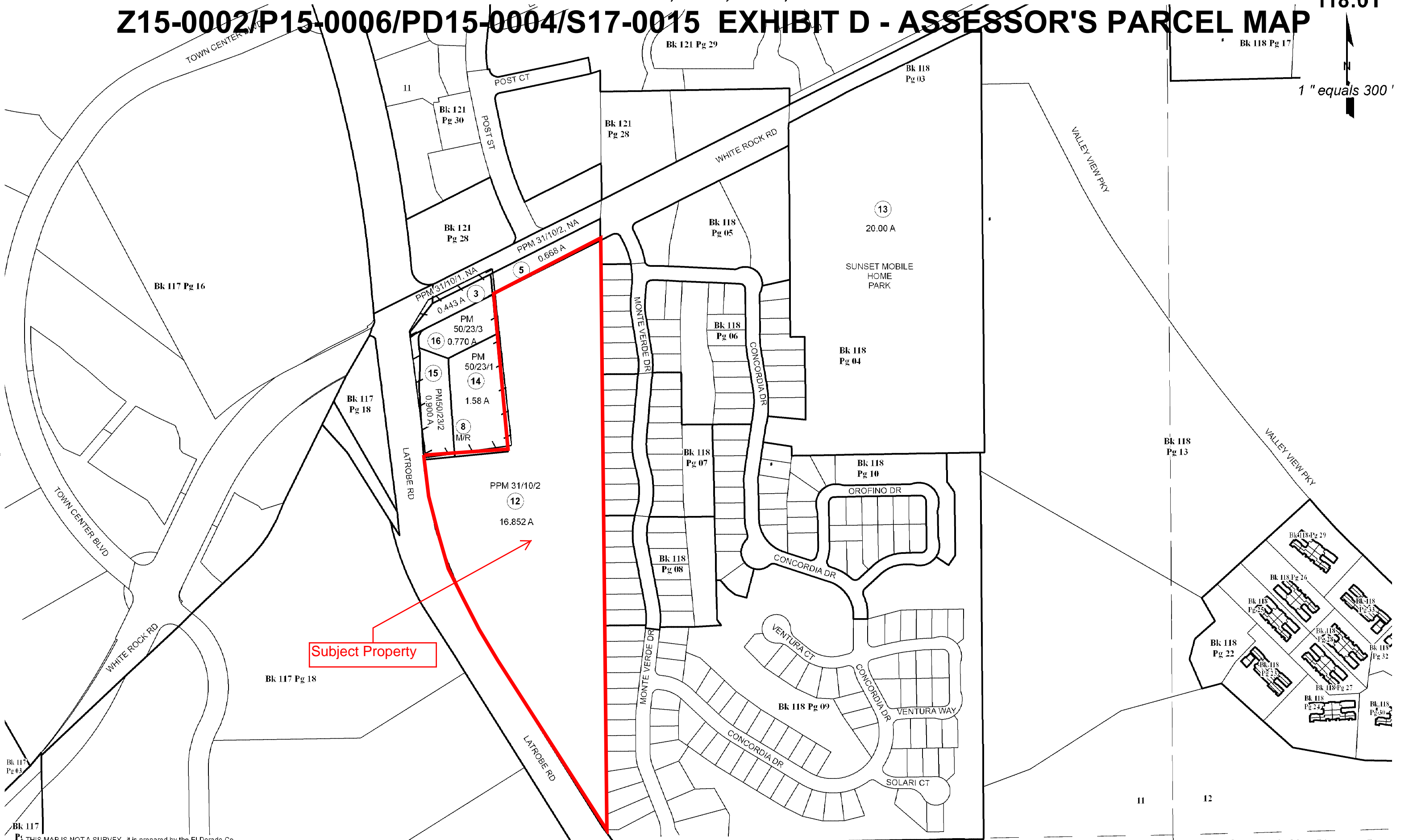
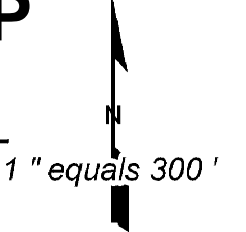


# Z15-0002/P15-0006/PD15-0004/S17-0015 EXHIBIT C - SITE AERIAL PHOTO



# Z15-0002/P15-0006/PD15-0004/S17-0015 EXHIBIT D - ASSESSOR'S PARCEL MAP

118:01



**Subject Property**

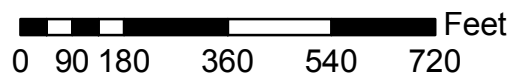
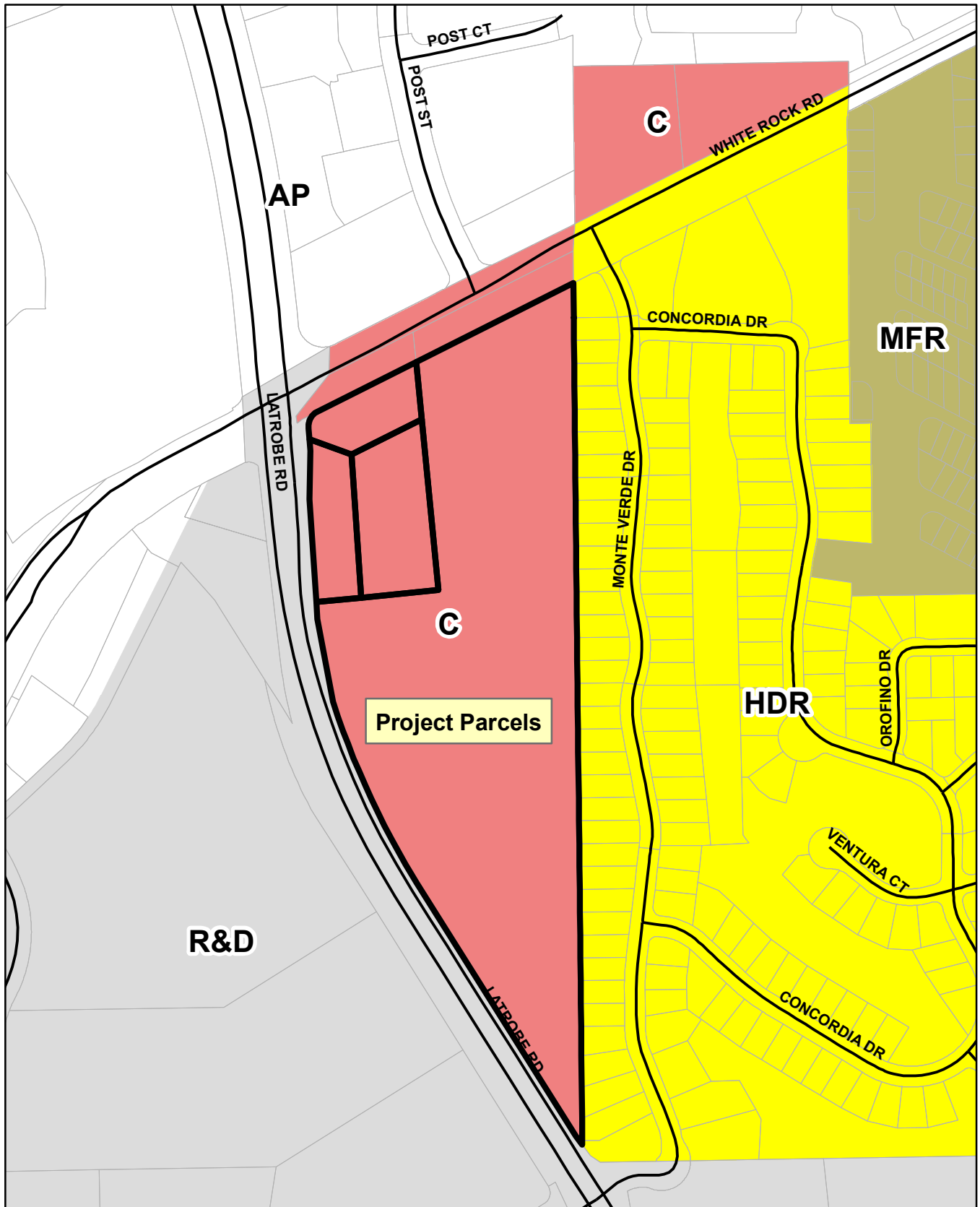
**P:** THIS MAP IS NOT A SURVEY, it is prepared by the El Dorado Co. Assessor's office for assessment purposes only. Area calculations and characteristics are not guaranteed. Users should verify items such as dimensions and acreage.

**Acreages Are Estimates**

Adjacent Map Pages Shown in Grey Text  
Assessor's Block Numbers Shown in Ellipses  
Assessor's Parcel Numbers Shown in Circles

Rev. Oct. 29, 2008

# Z15-0002/P15-0006/PD15-0004/S17-0015 EXHIBIT E - GENERAL PLAN LAND USE MAP



# Z15-0002/P15-0006/PD15-0004/S17-0015 EXHIBIT F - ZONING MAP

