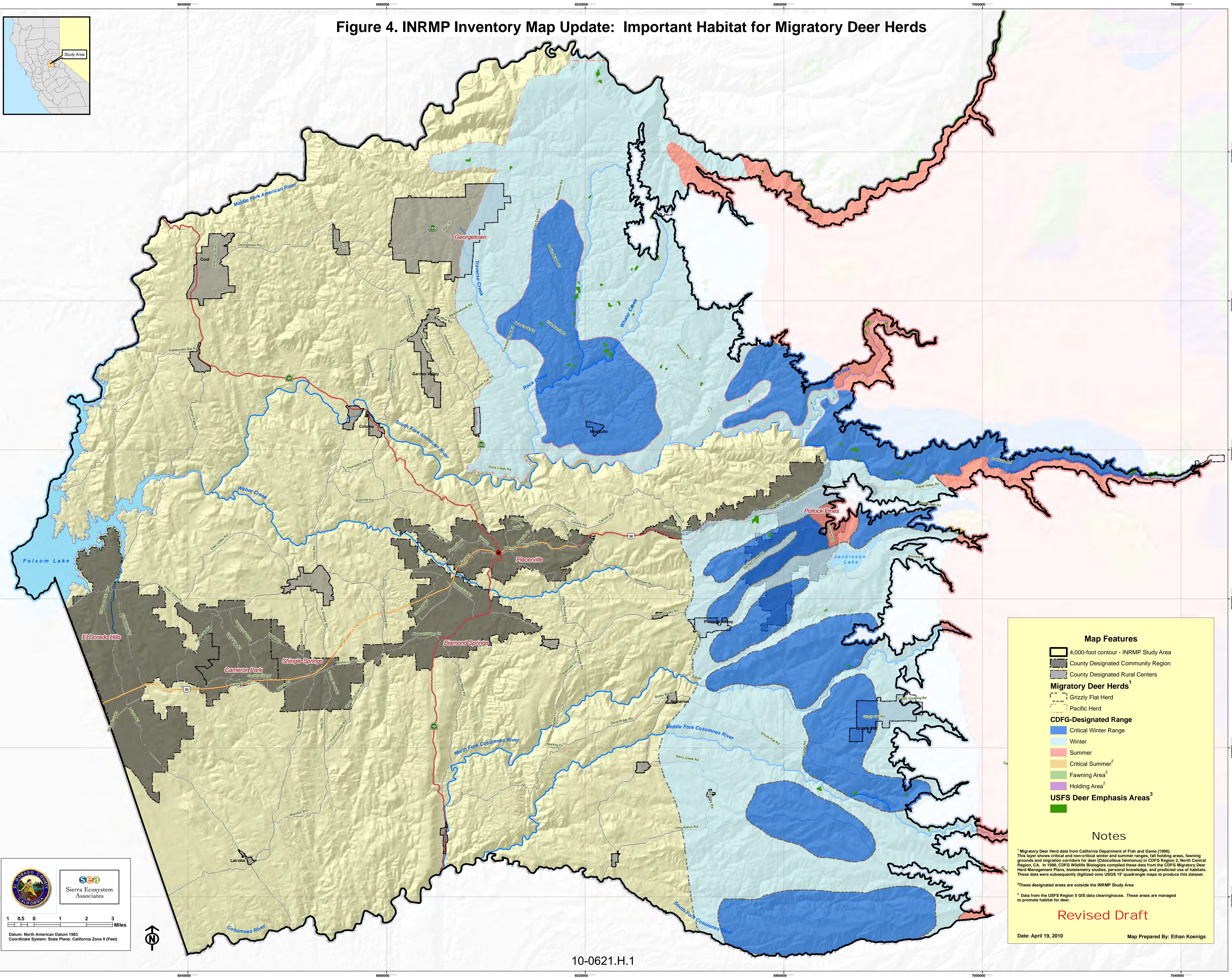


Figure 4. INRMP Inventory Map Update: Important Habitat for Migratory Deer Herds



**Map Features**

- 4,000-foot contour - INRMP Study Area
- County Designated Community Region
- County Designated Rural Centers
- Migratory Deer Herds<sup>1</sup>**
  - Grizzly Flat Herd
  - Pacific Herd
- CDFG-Designated Range**
  - Critical Winter Range
  - Winter
  - Summer
  - Critical Summer<sup>2</sup>
  - Fawning Area<sup>2</sup>
  - Holding Area<sup>2</sup>
- USFS Deer Emphasis Areas<sup>3</sup>**
  -

**Notes**

<sup>1</sup> Migratory Deer Herd data from California Department of Fish and Game (1990). This layer shows critical and non-critical winter and summer ranges, fall holding areas, fawning grounds and migration corridors for deer (*Odocoileus hemionus*) in CDFG Region 2, North Central Region, CA. In 1990, CDFG Wildlife Biologists compiled these data from the CDFG Migratory Deer Herd Management Plans, bioenergetics studies, personal knowledge, and predicted use of habitats. These data were subsequently digitized onto USGS 15' quadrangle maps to produce this dataset.

<sup>2</sup> These designated areas are outside the INRMP Study Area

<sup>3</sup> Data from the USFS Region 5 GIS data clearinghouse. These areas are managed to promote habitat for deer.

Revised Draft

Date: April 19, 2010      Map Prepared By: Ethan Koenigs

Sierra Ecosystem Associates

1 0.5 0 1 2 3 Miles

Datum: North American Datum 1983  
Coordinate System: State Plane: California Zone II (Feet)