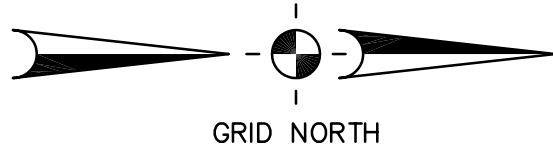


- LEGEND**
- | | | | |
|---|-----------------------------|---|---|
| □ | AIRPORT GRID COORDINATE | □ | EXISTING CABLE MARKER TO BE ABANDONED |
| ○ | EXISTING HANDHOLE TO REMAIN | ○ | EXISTING 1W-2" TYPE II DUCT |
| ⊞ | NEW 1W-2" TYPE II DUCT | ⊞ | EXISTING 1W-2" TYPE II DUCT |
| ⊞ | NEW 2W-3" TYPE I DUCT | ⊞ | EXISTING 2W-3" TYPE I DUCT |
| — | EXISTING WIRE | — | NEW R/W OR PAPI CIRCUIT CABLE |
| — | NEW ELEVATED R/W EDGE LIGHT | — | R/W EDGE LIGHT LENS COLOR CODE |
| — | EXISTING LIGHT TO REMAIN | — | EXISTING ELEVATED R/W THRESHOLD LIGHT TO REMAIN |

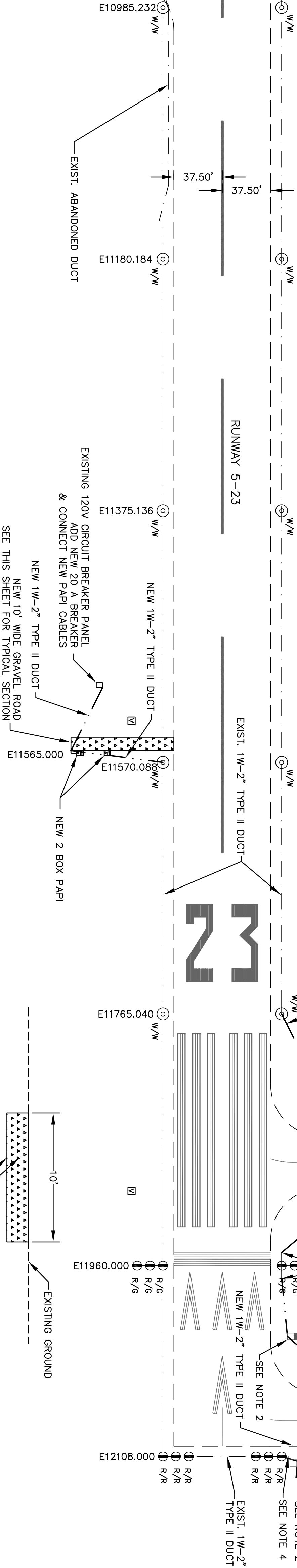
- LENS COLOR LEGEND**
- | | |
|---|--------|
| R | RED |
| G | GREEN |
| Y | YELLOW |
| W | WHITE |

- NOTES:**
- BORE UNDER EXIST. T/W & INSTALL NEW 1W-2" TYPE II DUCT & INSTALL NEW 1W-2" TYPE II DUCT 1' FROM EDGE OF TAXIWAY ADJUST LOCATION OF HANDHOLES & DUCT TO AVOID T/W LIGHT BY 5' MIN.
 - INSTALL NEW 100W TRANSFORMER FOR ALL EXISTING SIGNS.
 - INTERCEPT R/W CIRCUIT CABLE AT EXISTING LIGHT, CONNECT NEW CABLE TO EXISTING CABLE.
 - ATTACH NEW DUCT TO EXISTING STUB FROM EXISTING LIGHT
 - AT PAPI CONTROL, INSTALL A 35 WATT SERIES TRANSFORMER POWERED BY THE RUNWAY CIRCUIT THAT OPERATES RELAY THAT WILL CONTROL PAPI OPERATIONS. PAPI SHALL BE WIRED SUCH THAT IT IS CONTROLLED BY PHOTO CELL AND THE CONTROL RELAY SUCH THAT PAPI IS ON CONTINUOUSLY DURING DAYLIGHT HOURS AND IS ONLY ON AT NIGHT WHEN THE RUNWAY LIGHTS ARE ON.

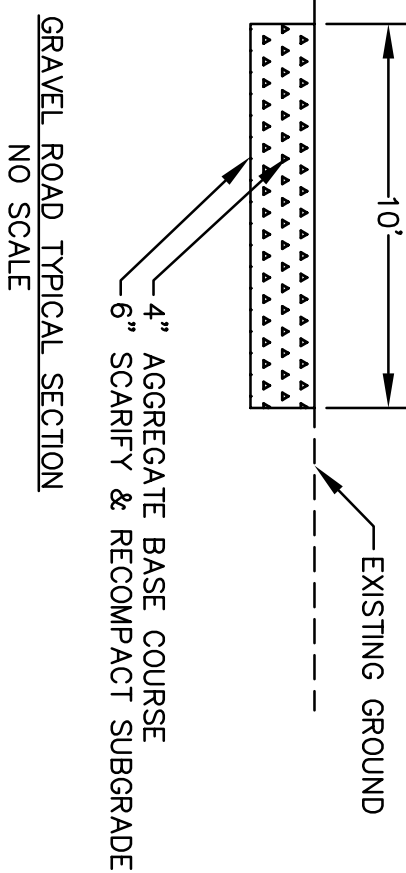
VERIFY SCALES:
BAR IS ONE INCH ON ORIGINAL DRAWING.
IF NOT ONE INCH ON THIS SHEET, ADJUST SCALES ACCORDINGLY.



MATCH LINE E10800.000 SEE SHEET NO. 7

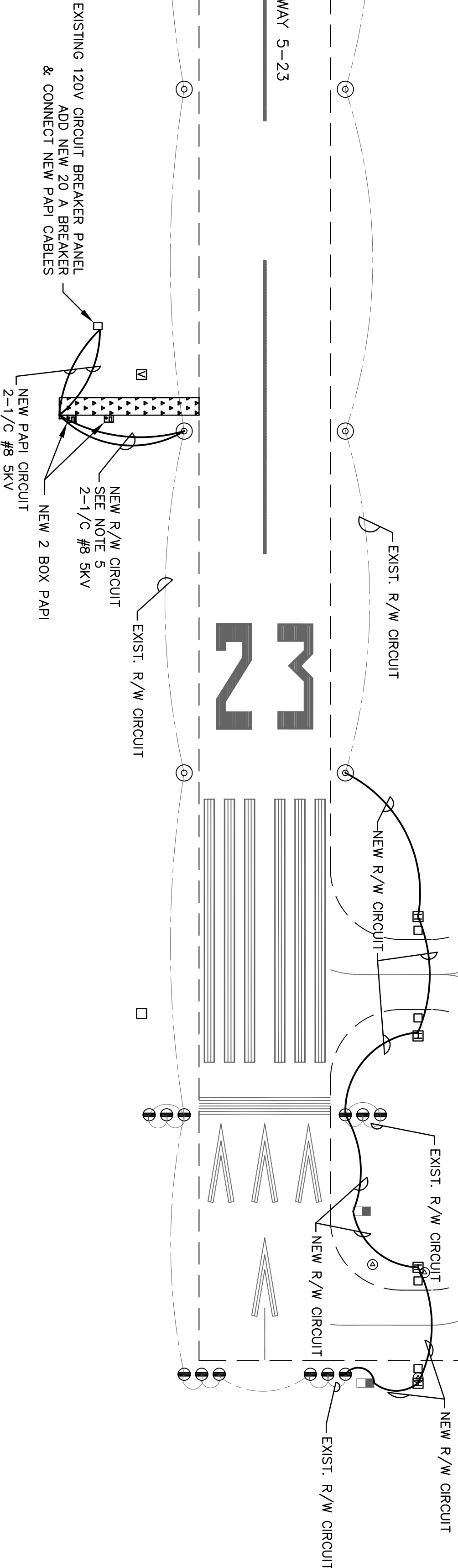


DUCT PLAN



GRAVEL ROAD TYPICAL SECTION
NO SCALE

MATCH LINE E9300.000 SEE SHEET NO. 7



WIRING PLAN

PLACERVILLE AIRPORT

PLACERVILLE, CALIFORNIA

R/W LIGHTING REHABILITATION (PHASE II)

LIGHTING, DUCT & WIRING PLAN
E10800.000 TO E12110.000

| NO. | REVISIONS | BY | APR | DATE |
|-----|-----------|----|-----|------|
| | | | | |
| | | | | |
| | | | | |
| | | | | |
| | | | | |
| | | | | |
| | | | | |
| | | | | |
| | | | | |

ENGINEER OF RECORD



6125 King Road, Suite 201 • Loomis, California 95650-8004 • (916) 652-4725

| | |
|-----------------------|----------------|
| DESIGN BY: RWB | SHEET NUMBER |
| DRAWN BY: MSB | 7 OF 11 SHEETS |
| CHECKED BY: RWB | |
| DATE: JUNE 29, 2006 | |
| CONTRACT NO. - | |
| PROJECT NO. - | |
| DWG FILE: - | |
| DRAWING SCALE: 1"=50' | |