

# 2017 Americans with Disabilities Act (ADA) Transition Plan for County Maintained Roadways



Board of Supervisors Meeting  
8-29-17

Presented by:  
Community Development Services  
Department of Transportation





# Transition Plan: Goals and Objectives

- **ADA Conformance**
  - **Compliant Curb Ramps**
  - **Accessible Walkways**



Americans with Disabilities Act  
Formal Transition Plan  
For  
County Maintained Roadways



El Dorado County  
Community Development Services  
Department of Transportation

July, 2017



# Transition Plan: Goals and Objectives

- Identify:
  - Accomplishments to Date
  - Implementation Program



Americans with Disabilities Act  
Formal Transition Plan  
For  
County Maintained Roadways



El Dorado County  
Community Development Services  
Department of Transportation

July, 2017



# Transition Plan: Key Plan Components

- ADA Legislative Requirements/Background
- Self Evaluation Results
- Transition Plan Implementation Program
- Updated Grievance Procedures



# Transition Plan: Project Milestones

Evaluate  
Curb  
Ramps

Draft  
ADA  
Preliminary  
Transition  
Plan

Public  
Outreach

Formal  
ADA  
Transition  
Plan

Present  
Plan at  
Board of  
Supervisors  
Meeting

Plan  
Approval  
and  
Website  
Updates

2015-2016

Oct. 2016

Oct. 2016-  
Jan. 2017

Jul. 2017

Aug. 2017

Sept. 2017

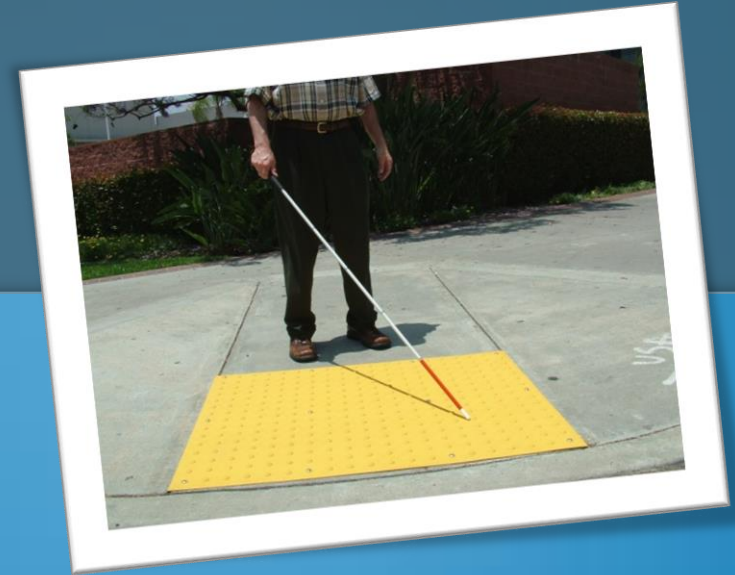


# Self Evaluation

## SUMMARY OF EXISTING CURB RAMPS PER AREA

AREA	EXISTING CURB RAMPS SURVEYED
Cameron Park	124
Camino	5
Diamond Springs	42
El Dorado	1
El Dorado Hills	272
Latrobe	49
Placerville (Unincorporated)	2
Pollock Pines	4
Shingle Springs	15
South Lake Tahoe	2
<b>Total</b>	<b>516</b>

# Self Evaluation: Survey Method

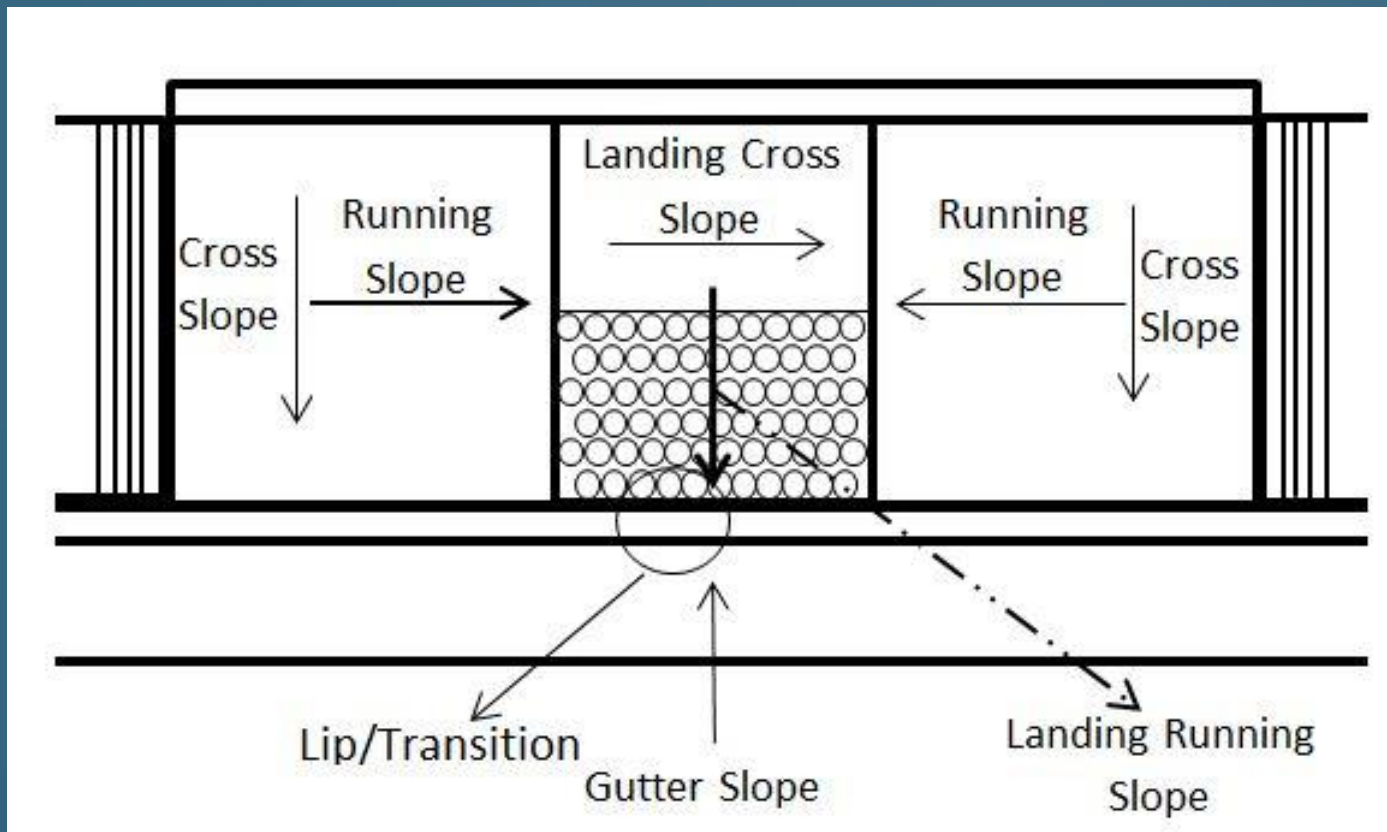


- Data Collection
  - Slopes
  - Widths and Depths
  - Existence of Detectable Warning Surface (Yellow Truncated Domes)
- Curb Ramp Inspection Form and Curb Return Diagram
- Consistency with Caltrans Specifications



# Self Evaluation: Curb Ramp Measurements

## ➤ Slopes, Lengths, and Widths







# Curb Ramp Inspection Form and Curb Return Diagram



COMMUNITY DEVELOPMENT SERVICES  
DEPARTMENT OF TRANSPORTATION  
<http://www.edcgov.us/DOI/>

## Curb Ramp Inspection Form

Project Name: EDC ADA Transition Plan

Inspected/measured by: \_\_\_\_\_

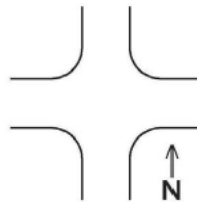
Date Field Measured: \_\_\_\_\_

N/S STREET \_\_\_\_\_

E/W STREET \_\_\_\_\_

Curb Ramp Location (circle one):

N/E N/W S/E S/W



Curb Ramps Case per Caltrans A88A 2015 Standard Plan: A B C D E F G Na

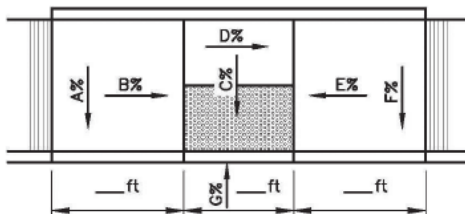
### Data Collection:

A1: \_\_\_\_\_ B1: \_\_\_\_\_ C1: \_\_\_\_\_ D1: \_\_\_\_\_ E1: \_\_\_\_\_ F1: \_\_\_\_\_ G1: \_\_\_\_\_

A2: \_\_\_\_\_ B2: \_\_\_\_\_ C2: \_\_\_\_\_ D2: \_\_\_\_\_ E2: \_\_\_\_\_ F2: \_\_\_\_\_ G2: \_\_\_\_\_

A3: \_\_\_\_\_ B3: \_\_\_\_\_ C3: \_\_\_\_\_ D3: \_\_\_\_\_ E3: \_\_\_\_\_ F3: \_\_\_\_\_ G3: \_\_\_\_\_

Transition on/off CR (in.): \_\_\_\_\_



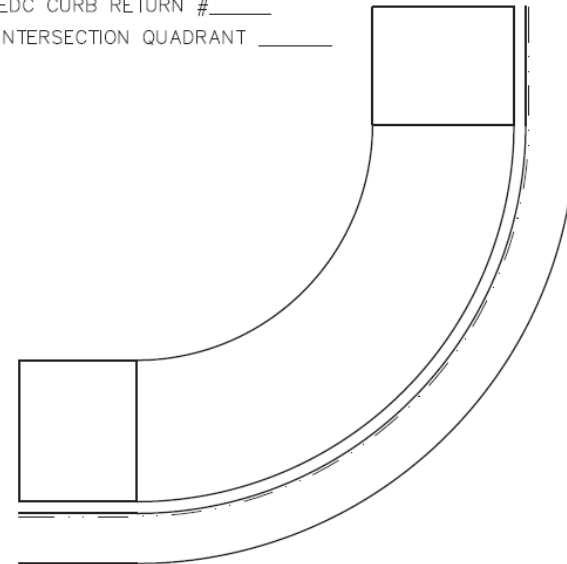
## CURB RETURN DIAGRAM

DATE INSPECTED \_\_\_\_\_

INSPECTED BY \_\_\_\_\_

EDC CURB RETURN # \_\_\_\_\_

INTERSECTION QUADRANT \_\_\_\_\_



NORTH

STREET \_\_\_\_\_



EL DORADO COUNTY  
COMMUNITY DEVELOPMENT AGENCY

Drawing name: \\CD\Area\TD-Engineering\Projects\Active\33007 ADA Compliance Project\Map\Exhibit\ADA Curb Ramp Exhibit\_Book\_Sheet.dwg Layout Tab: Exhibit Dec 15, 2015 - 11:31am abishop



# Self Evaluation: Curb Ramp Types

## ➤ Parallel



*Blackstone Pkwy x Royal Oaks Dr.*

## ➤ Perpendicular



*Francisco Dr. x Village Center Dr.*



# Self Evaluation: Summary of Findings



<b>CATEGORY</b>	<b>NO. OF CURB RAMPS</b>
Total existing curb ramps inspected	516
Total curb ramps that are ADA compliant	121
Total non-compliant curb ramps	395
Corners where curb ramps do not exist and are needed	75

# Curb Ramp Ratings



Rating Number	Rating Description
R0	Ramp Meets All Specifications
R1	Ramp Has One Defect
R2	Ramp Has Two Defects
R3	Ramp Has Three Defects
R4	Ramp Has Four Defects
R5	Ramp Has Five Defects
R6	Ramp Has Six Defects
R7	Ramp Has Seven or More Defects
R8	Ramp Does Not Exist and is Needed

## ➤ R0 – ADA Compliant



*White Rock Rd. x Valley View Parkway*

## ➤ R8 – Does Not Exist



*Francisco Dr. x Embarcadero Dr.*

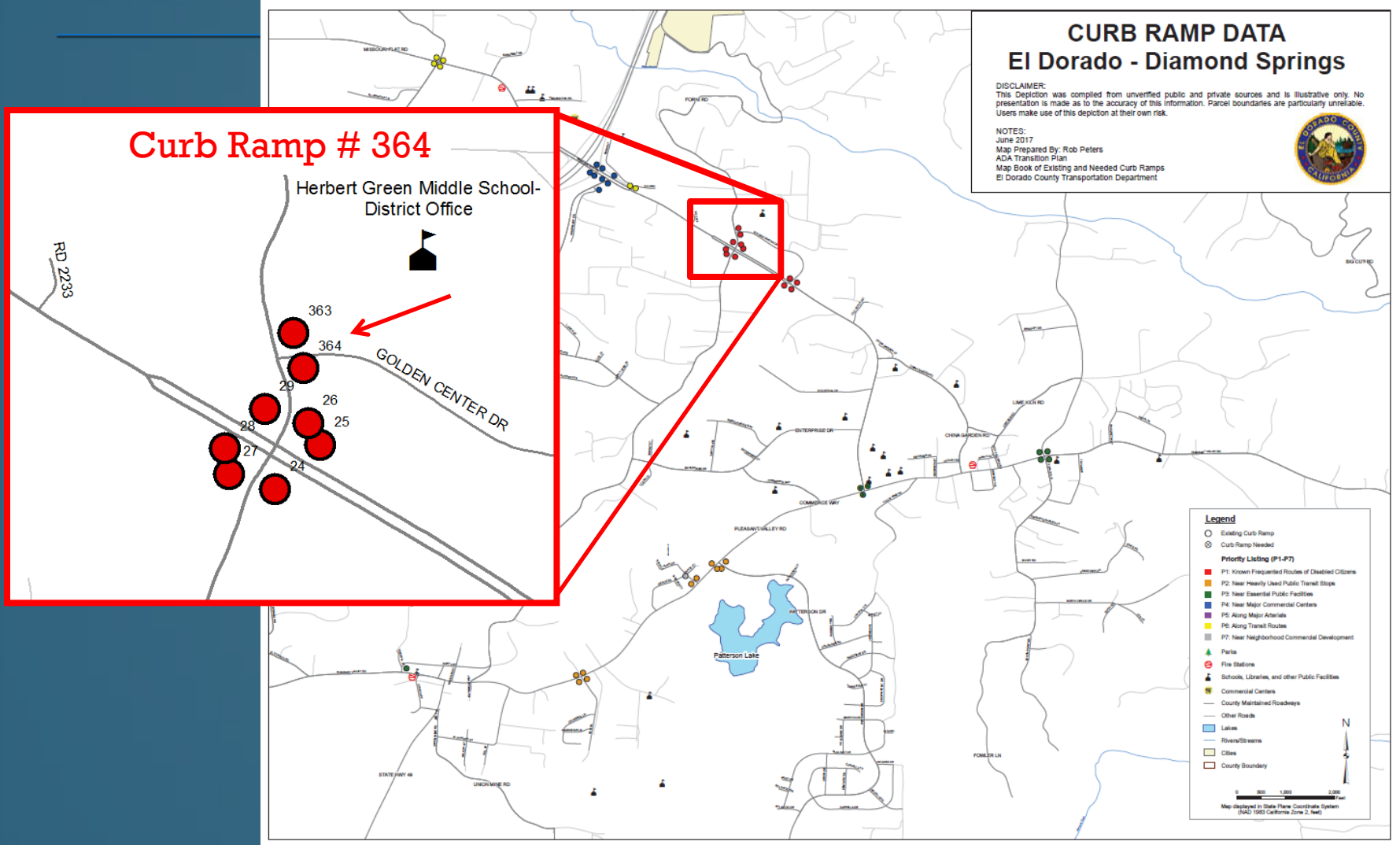
# Priorities



Priority Number	Priority Description
P1	Known Routes of Disabled Citizens
P2	Facilities Near Heavily Used Public Transit Stops
P3	Facilities Near Essential Public Facilities
P4	Facilities Near Commercial Centers
P5	Facilities Along Major Arterials
P6	Facilities Along Transit Routes
P7	Facilities in Residential Neighborhoods and Other Areas Not Classified



# Curb Ramp Mapping



# Curb Ramp Mapping



A screenshot of the Google Earth Pro application. The window title is "Google Earth Pro". The menu bar includes "File", "Edit", "View", "Tools", "Add", and "Help". The search bar contains "ex: Tokyo, Japan" and a "Search" button. Below the search bar are "Get Directions" and "History" links. The "Places" panel on the left lists items from 0358 to 0395, each with a checkmark and a colored pin icon. The main map area shows a 3D aerial view of a road intersection. Two red pins are placed on the curb at the intersection, labeled "0363" and "0364". The road is labeled "Forni Rd". A building complex is visible on the right side of the road. The status bar at the bottom shows "Imagery Date: 6/28/2017", "38°42'26.58\" N 120°49'49.23\" W elev. 1770 ft eye alt. 1891 ft", and the "Google earth" logo.

# Curb Ramp Database



## Curb Ramp Info Lookup

Road Name

364

### Curb Ramp Information Entry Form

ID 364

Road Name: FORNI RD

Latitude: 38 42 26.19 N

Cross Street: GOLDEN CENTER DR

Longitude: 120 49 49.99 W

Area: Diamond Springs

	Left Ramp	Landing	Right Ramp	DWS <input checked="" type="checkbox"/>	Notes
Longitudinal Slope %	9	1.3	1.83	Case (Caltrans) C	
Cross Slope %	1.77	2.77	1.17	Priority: P1	
Width (ft.)	5.65	4.00 X 3.05	5.5	Rating 3	
Curb Type	Vertical	Curb Type	Vertical		
Gutter Slope (%)	6.3	Transition (in.)	0.5		



Add/Change Delete View Image



Add/Change Delete View Image

- Priority 1: Known frequented routes of disabled citizens
- Priority 2: Facilities near heavily used public transit
- Priority 3: Facilities near essential public facilities
- Priority 4: Facilities near major commercial centers
- Priority 5: Facilities along major arterials
- Priority 6: Facilities along transit routes
- Priority 7: Facilities near neighborhood commercial
- Priority 8: Facilities in residential neighborhoods

Name Yang, Mueller

Date 6/7/2016





# The Draft ADA Preliminary Transition Plan

PUBLIC DRAFT



Americans with Disabilities Act  
Preliminary Transition Plan  
For  
County Maintained Roadways



El Dorado County  
Community Development Agency  
Transportation Division

September, 2016

- Prepared in September 2016
- Preliminary Cost Estimates
- Released for Public Review

17-0860 C 17 of 28



# Public Outreach Efforts

## **PUBLIC WORKSHOP: Americans with Disability Act (ADA) Transition Plan for County Maintained Roadways**

**Tuesday, October 25, 2016**

**Planning Commission Hearing Room**

**2850 Fairlane Court, Placerville**

**@ 6:00pm**

Come share your experiences and concerns regarding the physical accessibility of curb ramps within County's right-of-way.



**Hosted by Community Development Agency,  
Transportation Division**

Contact: Donna Keeler at [adacoordinator@edcgov.us](mailto:adacoordinator@edcgov.us), 530.621.5900

For more information, visit: [www.edcgov.us/ADA.aspx](http://www.edcgov.us/ADA.aspx)

Questions about facility accessibility/to request accommodations for this meeting: Kevin Gilliland at [kevin.gilliland@edcgov.us](mailto:kevin.gilliland@edcgov.us), 530.621.5890



**COMMUNITY DEVELOPMENT AGENCY  
TRANSPORTATION DIVISION**

<http://www.edcgov.us/DOT/>

### **Survey of Disabled Access Experiences**

El Dorado County is interested in your experiences and opinions regarding the physical accessibility of curb ramps within the County's right-of-way. Feel free to attach additional pages and comments. If you would like to have the survey read to you & completed by telephone, please call Chao Yang at (530) 621-5900, or send an email to [chao.yang@edcgov.us](mailto:chao.yang@edcgov.us).

1. What conditions along County streets/sidewalks are most important to you? (Please check up to 3)

- |   |  |
|---|--|
| <input type="checkbox"/> Curb ramps at every corner | <input type="checkbox"/> Pavements in good, firm condition |
| <input type="checkbox"/> Reasonable crossing times  | <input type="checkbox"/> Slope of curb ramps               |
| <input type="checkbox"/> Width of curb ramps        | <input type="checkbox"/> Other _____                       |

2. Please identify difficulties or constraints along routes you normally take:

(1) Street name: \_\_\_\_\_ Nearest cross street: \_\_\_\_\_  
 Curb Ramps       Crossings       Inaccessible

\_\_\_\_\_  
\_\_\_\_\_

(2) Street name: \_\_\_\_\_ Nearest cross street: \_\_\_\_\_  
 Curb Ramps       Crossings       Inaccessible

\_\_\_\_\_  
\_\_\_\_\_

(3) Street name: \_\_\_\_\_ Nearest cross street: \_\_\_\_\_  
 Curb Ramps       Crossings       Inaccessible

\_\_\_\_\_  
\_\_\_\_\_

3. If you have a mobility disability or travel with someone who has a mobility disability, what accessibility problems have you experienced along the County's intersections & curb ramps?

\_\_\_\_\_  
\_\_\_\_\_



# County ADA Webpage

The screenshot shows the El Dorado County website's ADA Services Homepage. At the top left is the County of El Dorado logo. A search bar is located at the top right. A navigation menu includes links for Home, I Want To, Government, Doing Business, Living, Visiting, Emergency Services, and Connect With Us. The main content area features the title "Americans with Disabilities Act" with a breadcrumb trail "Home > Government > Americans with Disabilities Act". Below this is the heading "Americans with Disabilities Act (ADA)" and a sub-heading "Welcome to El Dorado County ADA Services Homepage". A paragraph of text explains the county's commitment to accessibility. A vertical list of six menu items is displayed in a light blue box: "About Local and State Government ADA Compliance", "County ADA News and Updates", "Contact Us", "El Dorado County ADA Grievance Procedures", "Useful Links", and "Documents and Plans".

COUNTY OF  
El Dorado


Search El Dorado County

Home I Want To Government Doing Business Living Visiting Emergency Services Connect With Us

## Americans with Disabilities Act

Home > Government > Americans with Disabilities Act

### Americans with Disabilities Act (ADA)



#### Welcome to El Dorado County ADA Services Homepage

El Dorado County is thoroughly committed to ensuring accessibility to all county programs and facilities, including meeting all requirements of the Americans with Disabilities Act (ADA) and California law. The ADA of 1990, along with its implementing regulations, and the California Government Code Sections 4450 et seq, prescribe that facilities shall be made accessible to persons with disabilities. Since the Act was signed into law, El Dorado County has made continual strides towards ensuring accessibility to all County programs and services.

- About Local and State Government ADA Compliance
- County ADA News and Updates
- Contact Us
- El Dorado County ADA Grievance Procedures
- Useful Links
- Documents and Plans

[https://www.edcgov.us/Government/Pages/americans with disabilities act.aspx](https://www.edcgov.us/Government/Pages/americans%20with%20disabilities%20act.aspx)



# Transition Plan



Americans with Disabilities Act  
Formal Transition Plan  
For  
County Maintained Roadways




El Dorado County  
Community Development Services  
Department of Transportation  
July, 2017

- Finalized in July 2017
- Updated Grievance Procedures
- Implementation Schedule



# Repair/Modification Requests and Grievance Procedure

- Updated Online Repair/Modification Request Page
- Updated Grievance Procedure
- Online Fillable Grievance Form

 **COUNTY OF EL DORADO, CALIFORNIA**  
<http://www.edcgov.us/ADA.aspx>

---

**Americans with Disabilities Act (ADA) Grievance Form**

Please provide a complete description of the specific grievance. Include all known names and contact information. Add additional pages if necessary:

\_\_\_\_\_

\_\_\_\_\_

\_\_\_\_\_

Please give the date(s), time(s), and location(s) related to the grievance:

\_\_\_\_\_

\_\_\_\_\_

\_\_\_\_\_

Please state what you think should be done to resolve the grievance:

\_\_\_\_\_

\_\_\_\_\_

\_\_\_\_\_

Grievant: \_\_\_\_\_

Person preparing grievance (if different from grievant): \_\_\_\_\_

Relationship to grievant (if different from grievant): \_\_\_\_\_

Street Address: \_\_\_\_\_

City: \_\_\_\_\_ State: \_\_\_\_\_ Zip: \_\_\_\_\_

Phone: (\_\_\_\_) \_\_\_\_\_ Email: \_\_\_\_\_

Signature: \_\_\_\_\_ Date: \_\_\_\_\_

Return to: ADA Coordinator, Department of Transportation, Community Development Services, 2850 Fairlane Court, Placerville CA 95667; or  
ADA Coordinator, Facilities, Chief Administrative Office, 3000 Fairlane Court, Suite 1, Placerville, CA 95667

You will receive an acknowledgement of receipt within 15 calendar days of the submittal date. Upon request, reasonable accommodation will be provided in completing this form or copies of the form will be provided in alternative formats. Contact the appropriate ADA Coordinator at the physical address listed above, via email at [adacoordinator@edcgov.us](mailto:adacoordinator@edcgov.us), or via telephone at (530) 621-5900 (DOT) or (530) 621-5890 (Facilities).

Appendix D-2

# Estimated Repair/Replacement/Installation Costs



**TABLE VII- REPAIR/REPLACEMENT/INSTALLATION COST**

Case	Item Cost	No. of Curb Ramps	Total Cost*
1	\$540	16	\$8,640
2	\$3,250	30	\$97,500
3	\$10,000	356	\$3,560,000
4	\$7,500	71	\$532,500
<b>Total Construction Cost for all Cases*</b>			<b>\$4,198,640</b>
<b>Assumes 20% PE/Design &amp; 15% CM for total of 35%</b>			<b>\$1,469,524</b>
<b>Grand Total</b>			<b>\$5,668,164</b>

*\*2016 Estimated Costs*

# Implementation Program



- Estimated Total Cost: \$5,668,164
- Estimated Time to Complete:  
20 years
- Approximate Yearly Investment:  
\$300,000

# Repair/Replacement/ Installation Schedule



- Schedule Prioritization:
  - Based on Priority Grouping and Rating
  - Updated Annually



# Repair/Replacement/ Installation Schedule



- Funding Identified for Some Year 1 and 2 Improvements:
  - USTBG and CMAAQ
  - TIM Fee



# Identifying Consistent Funding Sources

- Annual List of Projects to be Considered in CIP
- Potential Funding Sources
  - General Fund, Road Fund, Tribal Funds, SB-1
- Supplement with Available Grant Funds



# Funding ADA Improvements: What Other Jurisdictions are Doing

## ➤ Counties

### ➤ Placer County

### ➤ Sacramento County

### ➤ Sonoma County



# Requested Board Actions

---

- Approve the Transition Plan for as Presented
- Provide Staff Guidance on Preferred Consistent Funding Sources