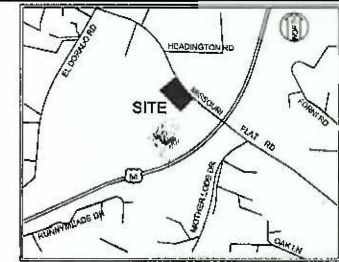


GENERAL ABBREVIATIONS / LEGEND

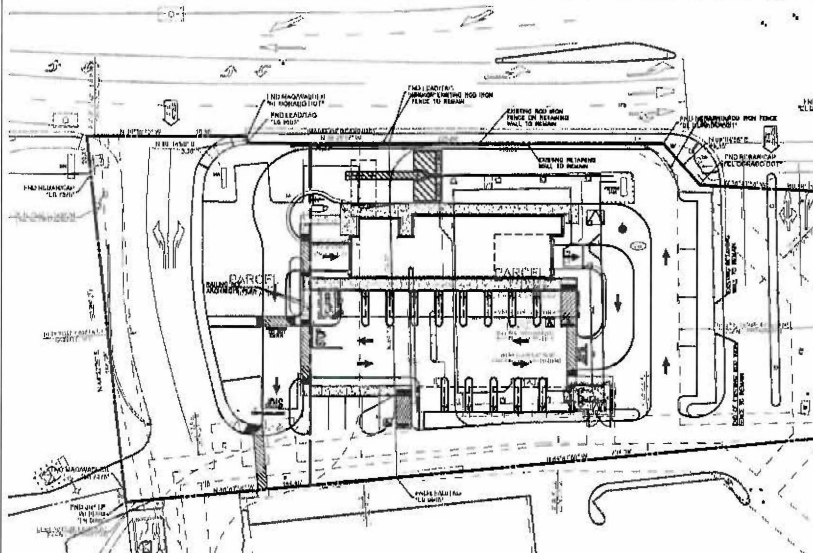
BIP BACKFLOW PREVENTER	○ MW	MONITORING WELL
UB UNDER DRAIN	○ RW	ROCK POLE
CL CENTERLINE	○ RW	IRON PIPE
BDV BUTTERFLY CHECK VALVE	○ RW	RAILROAD SPIKE
DT DRAIN DIVERSION	○ RW	STANDARD CITY MONUMENT
DWY DRAINWAY	○ RW	SURVEY MONUMENT
C ELECTRICAL LINE	○ RW	STORM DRAIN MANHOLE
ER ELECTRICAL RIB	○ RW	STREET SIGN
EP EDGE OF PAVEMENT	○ RW	STREET LIGHT
EX EXISTING	○ RW	WATER VALVE
FDG FIRE DEPARTMENT CONNECTION	○ RW	TREE WITH SIZE
FF FINISHED FLOOR	○ RW	TREE REMOVAL
FL FLOORLINE	○ RW	TRANSITION
FS FINISHED SURFACE/FIRE SERVICE	○ RW	UNPAVED W/HC FENCE
G GAS PIPE	○ RW	CHAIN-LINK FENCE
GB GRAB BREAK	○ RW	WOOD FENCE
UM GAS METER	○ RW	SAWTOOTH LINE
OP GRAND POST	○ RW	WALL
OK GRATE	○ RW	
NDR HANDICAP RAMP	○ RW	
HW INVERT	○ RW	
JF JOINT POLE	○ RW	
JT JOINT TRENCH	○ RW	
LF LINER FEET	○ RW	
MW MONITORING WELL	○ RW	
OE OVERHEAD ELECTRIC	○ RW	
OH OVERHEAD TELEPHONE	○ RW	
PAE PUBLIC ACCESS EASEMENT	○ RW	
PO POLE TOP	○ RW	
PCG PORTLAND CEMENT CONCRETE	○ RW	
PGAC PACIFIC GAS & ELECTRIC	○ RW	
PIV PUMP INDICATOR VALVE	○ RW	
PIF PUBLIC UTILITY FURNISHMENT	○ RW	
PVC POLYETHYLENE CHLORIDE PIPE	○ RW	
R RIDGE LINE	○ RW	
RUP RAIN URINALS UNDER 18" PIPE	○ RW	
RUP REPAIRED IMPROVED PRINCIPAL RAINFLOW	○ RW	
SD STORM DRAIN PIPE	○ RW	
SDR STORM DRAIN CATCH BASIN	○ RW	
JOCB STORM DRAIN CLEANOUT	○ RW	
SDM STORM DRAIN MANHOLE	○ RW	
SS SANITARY SEWER PIPE	○ RW	
SSCO SANITARY SEWER CLEANOUT	○ RW	
SDM SANITARY SEWER MANHOLE	○ RW	
SW SIDEWALK	○ RW	
T TELEPHONE LINE	○ RW	
TC TOP OF CURB	○ RW	
TH TOP OF CONCRETE HEADER	○ RW	
TOWH TOP OF REINFORCED WALL	○ RW	
TP TELEPHONE POLE	○ RW	
TS TRAFFIC SIGNAL	○ RW	
TSI TRAFFIC SIGNAL BOX	○ RW	
VG VALLEY GUTTER	○ RW	
W WALKWAY	○ RW	
WJ WALKWAY JOINT	○ RW	
COL COLUMN	○ RW	
4" EXISTING WATER LINE	○ RW	PROPOSED GAS VALVE
2" EXISTING GAS LINE	○ RW	OVERLAND RELEASE
8" EXISTING SANITARY SEWER LINE	○ RW	CONTROLLER CABINET
6" EXISTING STORM DRAIN (18")	○ RW	FIRE HYDRANT
4" EXISTING ELECTRICAL LINE	○ RW	GUY POLE
1" EXISTING TELEPHONE LINE	○ RW	HANDICAP SPACE
5" PROPOSED FIRE SERVICE	○ RW	PROPOSED STORM DRAIN CATCH BASIN
4" PROPOSED WATER LINE	○ RW	PROPOSED WATER METER / GAS METER
2" PROPOSED GAS LINE	○ RW	PROPOSED SANITARY SEWER CLEANOUT
8" PROPOSED SANITARY SEWER LINE	○ RW	PROPOSED FIRE HYDRANT
6" PROPOSED STORM DRAIN LINE	○ RW	PROPOSED SANITARY SEWER MANHOLE / STORM DRAIN MANHOLE
4" PROPOSED ELECTRICAL LINE	○ RW	
2" PROPOSED TELEPHONE LINE	○ RW	
1" PROPOSED JOINT UTILITY TRENCH	○ RW	
RODGE LINE	○ RW	
PROPERTY LINE	○ RW	
WATCH LINE	○ RW	
LIMIT OF DEMOLITION	○ RW	
GRAND ALLIANCE	○ RW	
307 PROPOSED CONTOUR	○ RW	

QUICK QUACK CARWASH #26-630

3970 MISSOURI FLAT ROAD
APN # 327-290-063-000
PLACERVILLE, CA



SITE KEY MAP 1"=30'



SHEET INDEX

- C-1.1 COVER SHEET
- C-2.1 HORIZONTAL CONTROL PLAN
- C-3.1 GRADING PLAN
- C-4.1 UTILITY PLAN

APPROVED
EL DORADO COUNTY
PLANNING COMMISSION

DATE JULY 13, 2023

BY KAREN L. GARNER
EXECUTIVE SECRETARY

PROJECT CONTACTS

DEVELOPER
QUICK QUACK CARWASH
1380 LEAD HILL BLVD #200
MORPHEE, CA 95891
PHONE: (916) 472-1689
CAMERON DRENNAN
E-MAIL: CDRENNAN@QUICKQUACK.COM

CIVIL ENGINEER
GPM ASSOCIATES, INC.
801 YANAGI VALLEY ROAD, SUITE 220
WALNUT CREEK, CA 94596
PHONE: (925) 943-2777
FAX: (925) 943-2778
EMAIL: ROBERT@GPMASOCIATES.US
LOW BURDICK

ARCHITECT
L.A. GROUP
21621 GARDWAY CENTER DRIVE, SUITE 213
DANFORTH SAN, CA 91760
GARDWAY CENTER CENTER
PHONE: (925) 890-1010
EMAIL: SQUANTY@LAGROUP.COM

GEOTECHNICAL
KRAZAN AND ASSOCIATES, INC.
4617 AUBURN BLVD
SACRAMENTO, CA 95841
PHONE: (916) 864-2200
EMAIL: DAVID@KRAZAN.COM

SEWER/WALK
CITY OF PLACERVILLE
PUBLIC WORKS
349 MAIN STREET
ROSEVILLE, CA 95678
DIRECTOR OF PUBLIC WORKS
CONTACT: MICK STONE
PHONE: (530) 842-5232
EMAIL: MICK.STONE@CITYOFPLACERVILLE.ORG

ENGINEERING
CITY OF PLACERVILLE
ENGINEERING DEPARTMENT
3101 CENTER STREET - 5TH FLOOR
PLACERVILLE, CA 95867
CITY ENGINEER
CONTACT: ROCIOSA NEVES
PHONE: (530) 842-5250
EMAIL: ROCIOSA@CITYOFPLACERVILLE.ORG

FIRE DEPARTMENT
EL DORADO COUNTY FIRE PROTECTION DISTRICT
4040 CARLSON ROAD
CANNON, CA 95709
CONTACT:
PHONE: (530) 644-9630
EMAIL:

PROJECT DATA

FLOOD ZONE NOTICE
THE SUBJECT PROPERTY IS SHOWN ON THE FEDERAL EMERGENCY MANAGEMENT AGENCY FLOOD INSURANCE RATE MAP, COMMUNITY PANEL NUMBER 060304 0778 C, DATED SEPTEMBER 28, 2004, AS BEING LOCATED IN FLOOD ZONE "X". AREAS OF DETERMINED TO BE OUTSIDE THE 0.2% ANNUAL CHANCE FLOOD.

INFORMATION WAS OBTAINED FROM THE FEMA WEBSITE (WWW.FEMA.GOV) ON AUGUST 5, 2021.

BASIS OF BEARING
THE BEARING OF NORTH 30°25'17" WEST TAKEN ON THE WESTERLY RIGHT-OF-WAY LINE OF MISSOURI FLAT ROAD AS SHOWN ON THAT CERTAIN PARCEL MAP FILED FOR RECORD ON JULY 13, 2023, AS BEING LOCATED IN FLOOD ZONE "X", EL DORADO COUNTY RECORDS HAS BEEN TAKEN AS THE BASIS OF ALL BEARINGS SHOWN HEREON.

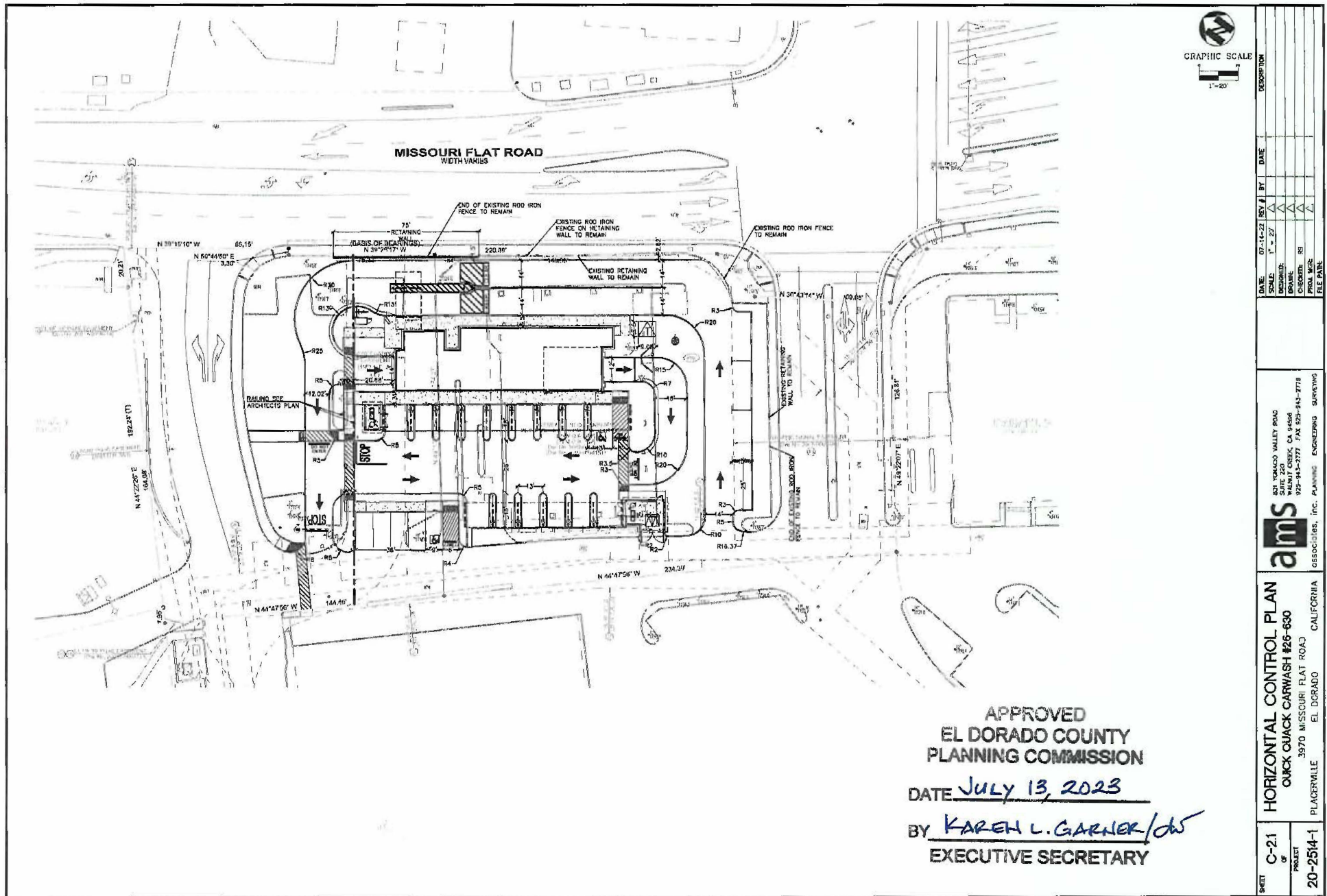
GENERAL NOTE
THIS MONUMENT "TOP OF G 63 DN" FOUND BRASS MARK IN MONUMENT WELL LOCATED AT THE INTERSECTION OF THE PARKWAY NOT LOCATED AT THE INTERSECTION OF MISSOURI FLAT ROAD AND MOTHER LOUL DRIVE. ELEVATION: 1776.0 FEET (GPS OBSERVED) (DATUM) NAVD 1983

DATE: 07-14-23 REV: 1 BY: DATE: 07-14-23
 CHECKED: [Signature] DESIGNED: [Signature]
 DRAWN: [Signature] FILED: [Signature]
 PROJECT: 22-2514-1
 SHEET: C-11 OF PROJECT


COVER SHEET
QUICK QUACK CARWASH #26-630
3970 MISSOURI FLAT ROAD
PLACERVILLE, CA 95867

ams ASSOCIATES, INC. PLANNING ENGINEERING SURVEYING
801 YANAGI VALLEY ROAD
WALNUT CREEK, CA 94596
925-943-2777 FAX 925-943-2778

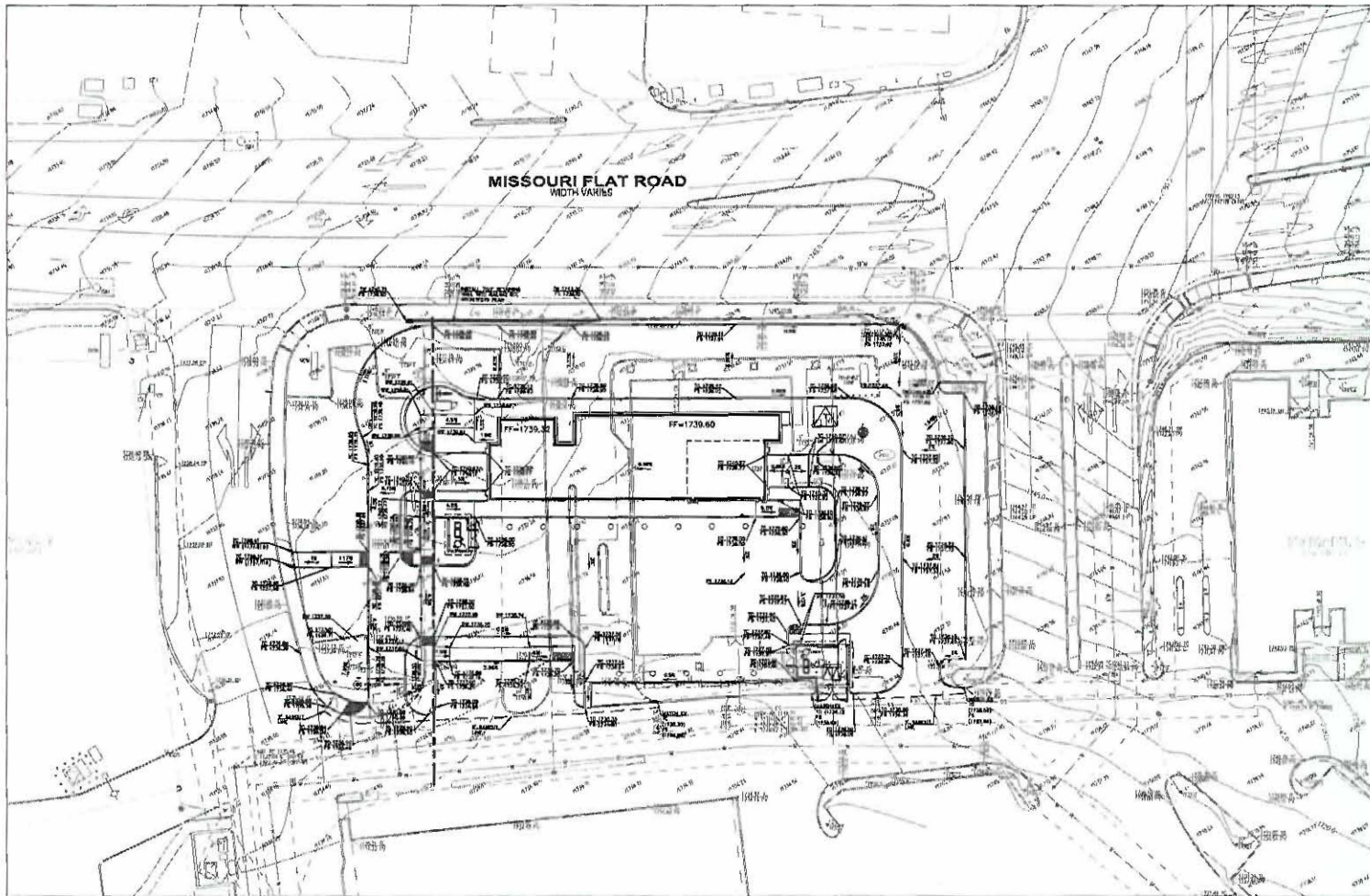
EL DORADO CALIFORNIA



APPROVED
 EL DORADO COUNTY
 PLANNING COMMISSION
 DATE July 13, 2023
 BY KAREN L. GARNER/dw
 EXECUTIVE SECRETARY

SHEET C-21 OF PROJECT 20-2514-1	HORIZONTAL CONTROL PLAN QUACK QUACK CARWASH #25-830 PLACERVILLE EL DORADO CALIFORNIA		 ASSOCIATES, INC. PLANNING ENGINEERING SURVEYING 801 YONCAS VALLEY ROAD WALNUT CREEK, CA 94596 925-943-2777 FAX 925-943-2778	DATE: 07-14-23	BY: [Signature]	DESCRIPTION:
	PROJECT: 20-2514-1	DATE: 07-14-23		BY: [Signature]	DESCRIPTION:	

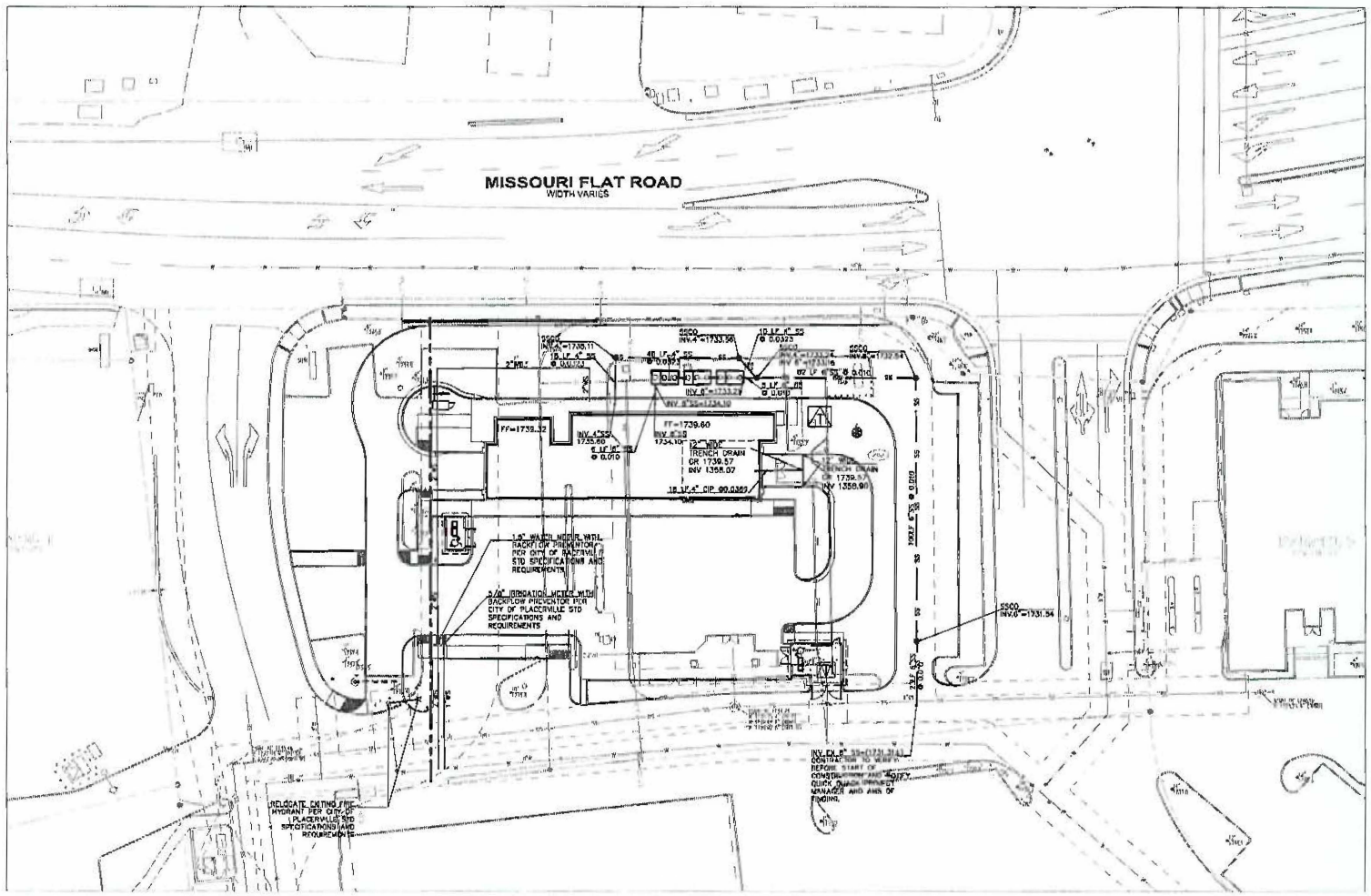
CUP22-0008/PD-R22-0002 Exhibit E: Site Plan Sheet Set



APPROVED
EL DORADO COUNTY
PLANNING COMMISSION
 DATE July 13, 2023
 BY KAREN L. GARNER/dlg
EXECUTIVE SECRETARY

NOTE:
 EXISTING SITE GRADING SHEET FLOWS TO THE SHOPPING CENTER STORM
 DRAINAGE SYSTEM TO THE SOUTH. THE PROPOSED QUICK QUACK CAR
 WASH DRAINAGE PATTERN SHEET FLOWS SOUTH TO THE EXISTING
 DRAINAGE CENTER DRAINAGE SYSTEM.

C-31 OF PROJECT	20-2514-1	SHEET	PLACERVILLE MISSOURI FLAT RD & FORNIA DRIVE QUACK QUACK CARWASH #26-630	 ASSOCIATES, INC. PLANNING ENGINEERING SERVICES	801 YONCAS VALLEY ROAD SUITE 100 PLACERVILLE, CA 95355 925-943-2777 FAX 925-943-2778
DATE: 07-14-23 CHECKED: [initials] DRAWN: [initials] FILE PATH:		REV # BY DATE 1 - 23 [initials] 2 [initials] 3 [initials]		DESCRIPTION:	



APPROVED
 EL DORADO COUNTY
 PLANNING COMMISSION
 DATE July 13, 2023
 BY KAREN L. GARNER/dw
 EXECUTIVE SECRETARY

SHEET	C-41	DATE	07-13-23	REV. #	1	BY	JK
	OF		1				
PROJECT	20-2514-1	DRAWN	JK	CHECKED	RS	PROJ. MGR.	JK
	UTILITY PLAN		RS		FILE PATH		
QUICK QUACK CARWASH #26-630		SAN JOAQUINO VALLEY ROAD		SCALE		1" = 20'	
MISSOURI FLAT RD & FORNIA DRIVE		SAN JOAQUINO VALLEY ROAD		DATE		07-13-23	
PLACERVILLE, CALIFORNIA		WALNUT CREEK, CA 94596		DRAWN		JK	
EL DORADO		925-943-2777 FAX 925-943-2778		CHECKED		RS	
		ENGINEERING SURVEYORS		PROJ. MGR.		JK	
		ASSOCIATES, INC.		FILE PATH			



LA Design Group, Inc.
 2875 S. GARDEN AVENUE, SUITE 200
 GARDEN GATE, CA 90501
 (714) 261-1171



QUICK QUACK
 LANDSCAPE ARCHITECTURE

PO BOX 200
 GARDEN GATE, CA 90501
 (714) 261-1171

LA Design Group, Inc. is a registered professional engineering firm in the State of California. The design and construction of this project was performed by the firm's duly licensed professional engineers. The design and construction of this project was performed by the firm's duly licensed professional engineers.



QUICK QUACK CAR WASH
 2660 MISSOURI FLAT ROAD, SUITE 200
 PLACERVILLE, CA 95368

DATE: _____
 PROJECT: _____
 DRAWING NO.: _____
 SHEET NO.: _____
 SCALE: _____
 DATE: _____
 DRAWN BY: _____
 CHECKED BY: _____
 APPROVED BY: _____

LANDSCAPE PLAN

L1

LA DESIGN GROUP, INC. ALL RIGHTS RESERVED.

PLANT SCHEDULE

NO.	SYM.	PLANT / COMMON NAME	QTY.	SIZE
1	AS	Aspen 'Noble' / New York Red Birch	15	10 gal
2	MA	Malva 'Princess' / Double Chrysanthemum	15	10 gal
3	MA	Malva 'Princess' / Double Chrysanthemum	15	10 gal
4	MA	Malva 'Princess' / Double Chrysanthemum	15	10 gal
5	MA	Malva 'Princess' / Double Chrysanthemum	15	10 gal
6	MA	Malva 'Princess' / Double Chrysanthemum	15	10 gal
7	MA	Malva 'Princess' / Double Chrysanthemum	15	10 gal
8	MA	Malva 'Princess' / Double Chrysanthemum	15	10 gal
9	MA	Malva 'Princess' / Double Chrysanthemum	15	10 gal
10	MA	Malva 'Princess' / Double Chrysanthemum	15	10 gal
11	MA	Malva 'Princess' / Double Chrysanthemum	15	10 gal
12	MA	Malva 'Princess' / Double Chrysanthemum	15	10 gal
13	MA	Malva 'Princess' / Double Chrysanthemum	15	10 gal
14	MA	Malva 'Princess' / Double Chrysanthemum	15	10 gal
15	MA	Malva 'Princess' / Double Chrysanthemum	15	10 gal
16	MA	Malva 'Princess' / Double Chrysanthemum	15	10 gal
17	MA	Malva 'Princess' / Double Chrysanthemum	15	10 gal
18	MA	Malva 'Princess' / Double Chrysanthemum	15	10 gal
19	MA	Malva 'Princess' / Double Chrysanthemum	15	10 gal
20	MA	Malva 'Princess' / Double Chrysanthemum	15	10 gal
21	MA	Malva 'Princess' / Double Chrysanthemum	15	10 gal
22	MA	Malva 'Princess' / Double Chrysanthemum	15	10 gal
23	MA	Malva 'Princess' / Double Chrysanthemum	15	10 gal
24	MA	Malva 'Princess' / Double Chrysanthemum	15	10 gal
25	MA	Malva 'Princess' / Double Chrysanthemum	15	10 gal
26	MA	Malva 'Princess' / Double Chrysanthemum	15	10 gal
27	MA	Malva 'Princess' / Double Chrysanthemum	15	10 gal
28	MA	Malva 'Princess' / Double Chrysanthemum	15	10 gal
29	MA	Malva 'Princess' / Double Chrysanthemum	15	10 gal
30	MA	Malva 'Princess' / Double Chrysanthemum	15	10 gal
31	MA	Malva 'Princess' / Double Chrysanthemum	15	10 gal
32	MA	Malva 'Princess' / Double Chrysanthemum	15	10 gal
33	MA	Malva 'Princess' / Double Chrysanthemum	15	10 gal
34	MA	Malva 'Princess' / Double Chrysanthemum	15	10 gal
35	MA	Malva 'Princess' / Double Chrysanthemum	15	10 gal
36	MA	Malva 'Princess' / Double Chrysanthemum	15	10 gal
37	MA	Malva 'Princess' / Double Chrysanthemum	15	10 gal
38	MA	Malva 'Princess' / Double Chrysanthemum	15	10 gal
39	MA	Malva 'Princess' / Double Chrysanthemum	15	10 gal
40	MA	Malva 'Princess' / Double Chrysanthemum	15	10 gal
41	MA	Malva 'Princess' / Double Chrysanthemum	15	10 gal
42	MA	Malva 'Princess' / Double Chrysanthemum	15	10 gal
43	MA	Malva 'Princess' / Double Chrysanthemum	15	10 gal
44	MA	Malva 'Princess' / Double Chrysanthemum	15	10 gal
45	MA	Malva 'Princess' / Double Chrysanthemum	15	10 gal
46	MA	Malva 'Princess' / Double Chrysanthemum	15	10 gal
47	MA	Malva 'Princess' / Double Chrysanthemum	15	10 gal
48	MA	Malva 'Princess' / Double Chrysanthemum	15	10 gal
49	MA	Malva 'Princess' / Double Chrysanthemum	15	10 gal
50	MA	Malva 'Princess' / Double Chrysanthemum	15	10 gal
51	MA	Malva 'Princess' / Double Chrysanthemum	15	10 gal
52	MA	Malva 'Princess' / Double Chrysanthemum	15	10 gal
53	MA	Malva 'Princess' / Double Chrysanthemum	15	10 gal
54	MA	Malva 'Princess' / Double Chrysanthemum	15	10 gal
55	MA	Malva 'Princess' / Double Chrysanthemum	15	10 gal
56	MA	Malva 'Princess' / Double Chrysanthemum	15	10 gal
57	MA	Malva 'Princess' / Double Chrysanthemum	15	10 gal
58	MA	Malva 'Princess' / Double Chrysanthemum	15	10 gal
59	MA	Malva 'Princess' / Double Chrysanthemum	15	10 gal
60	MA	Malva 'Princess' / Double Chrysanthemum	15	10 gal
61	MA	Malva 'Princess' / Double Chrysanthemum	15	10 gal
62	MA	Malva 'Princess' / Double Chrysanthemum	15	10 gal
63	MA	Malva 'Princess' / Double Chrysanthemum	15	10 gal
64	MA	Malva 'Princess' / Double Chrysanthemum	15	10 gal
65	MA	Malva 'Princess' / Double Chrysanthemum	15	10 gal
66	MA	Malva 'Princess' / Double Chrysanthemum	15	10 gal
67	MA	Malva 'Princess' / Double Chrysanthemum	15	10 gal
68	MA	Malva 'Princess' / Double Chrysanthemum	15	10 gal
69	MA	Malva 'Princess' / Double Chrysanthemum	15	10 gal
70	MA	Malva 'Princess' / Double Chrysanthemum	15	10 gal
71	MA	Malva 'Princess' / Double Chrysanthemum	15	10 gal
72	MA	Malva 'Princess' / Double Chrysanthemum	15	10 gal
73	MA	Malva 'Princess' / Double Chrysanthemum	15	10 gal
74	MA	Malva 'Princess' / Double Chrysanthemum	15	10 gal
75	MA	Malva 'Princess' / Double Chrysanthemum	15	10 gal
76	MA	Malva 'Princess' / Double Chrysanthemum	15	10 gal
77	MA	Malva 'Princess' / Double Chrysanthemum	15	10 gal
78	MA	Malva 'Princess' / Double Chrysanthemum	15	10 gal
79	MA	Malva 'Princess' / Double Chrysanthemum	15	10 gal
80	MA	Malva 'Princess' / Double Chrysanthemum	15	10 gal
81	MA	Malva 'Princess' / Double Chrysanthemum	15	10 gal
82	MA	Malva 'Princess' / Double Chrysanthemum	15	10 gal
83	MA	Malva 'Princess' / Double Chrysanthemum	15	10 gal
84	MA	Malva 'Princess' / Double Chrysanthemum	15	10 gal
85	MA	Malva 'Princess' / Double Chrysanthemum	15	10 gal
86	MA	Malva 'Princess' / Double Chrysanthemum	15	10 gal
87	MA	Malva 'Princess' / Double Chrysanthemum	15	10 gal
88	MA	Malva 'Princess' / Double Chrysanthemum	15	10 gal
89	MA	Malva 'Princess' / Double Chrysanthemum	15	10 gal
90	MA	Malva 'Princess' / Double Chrysanthemum	15	10 gal
91	MA	Malva 'Princess' / Double Chrysanthemum	15	10 gal
92	MA	Malva 'Princess' / Double Chrysanthemum	15	10 gal
93	MA	Malva 'Princess' / Double Chrysanthemum	15	10 gal
94	MA	Malva 'Princess' / Double Chrysanthemum	15	10 gal
95	MA	Malva 'Princess' / Double Chrysanthemum	15	10 gal
96	MA	Malva 'Princess' / Double Chrysanthemum	15	10 gal
97	MA	Malva 'Princess' / Double Chrysanthemum	15	10 gal
98	MA	Malva 'Princess' / Double Chrysanthemum	15	10 gal
99	MA	Malva 'Princess' / Double Chrysanthemum	15	10 gal
100	MA	Malva 'Princess' / Double Chrysanthemum	15	10 gal

COMPLIANCE STATEMENT

I have consulted with the officials of the water use ordinance and signed these specifically for the official use of water in this landscape design plan.

Robert J. Garner 7-13-23

LANDSCAPE/PLANNING NOTES

1. All new and existing landscape and structural elements to include 5% type of impact mark. Structural elements to include 10% impact mark.
2. All new and existing landscape and structural elements to include 5% type of impact mark. Structural elements to include 10% impact mark.
3. All new and existing landscape and structural elements to include 5% type of impact mark. Structural elements to include 10% impact mark.

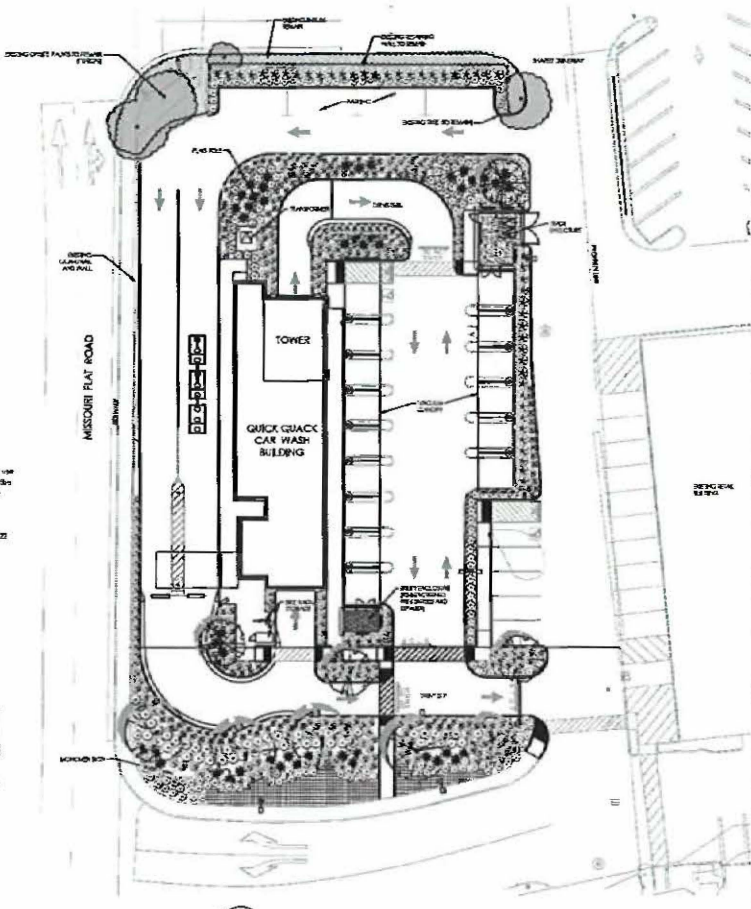
Water Efficient Landscape Worksheet

PLANTING	TYPE	QTY.	WATER USE (GAL)	WATER USE (GAL)	WATER USE (GAL)	WATER USE (GAL)	WATER USE (GAL)	WATER USE (GAL)
IRRIGATED PLANTING	AS	15	150	150	150	150	150	150
NON-IRRIGATED PLANTING	MA	15	150	150	150	150	150	150
TOTAL								

IRAF Calculations

PLANTING	TYPE	QTY.	WATER USE (GAL)	WATER USE (GAL)	WATER USE (GAL)	WATER USE (GAL)	WATER USE (GAL)
IRRIGATED PLANTING	AS	15	150	150	150	150	150
NON-IRRIGATED PLANTING	MA	15	150	150	150	150	150
TOTAL							

Source: Applied Water Efficiency (AWEF), 2010. The California Water Efficiency Incentive Program (CALWEIFIP) is a program of the California State Water Resources Control Board (CSWRB) and the California State Water Resources Control Board (CSWRB). The program is designed to encourage water conservation and reduce water consumption in residential and commercial buildings.



CUP22-0008/PD-R22-0002 Exhibit E: Site Plan Sheet Set

APPROVED
 EL DORADO COUNTY
 PLANNING COMMISSION
 DATE JULY 13, 2023
 BY KAREN L. GARNER / JLG
 EXECUTIVE SECRETARY

PLANT SCHEDULE

NO.	PLANT	QTY	SIZE
1	NEW BURNING BUSH / NEW ANGEL'S BELL	1500	12-18"
2	WILD CLOVER / MONTHS CRISP	1500	12-18"
3	SPYRAL CLOVER	5000	12-18"
4	WILD BURNING BUSH / NEW ANGEL'S BELL	500	LOW
5	ORANGE GLOVE SCILLA / NEW ANGEL'S BELL	500	LOW
6	WINDMILL CLOVER / NEW ANGEL'S BELL	500	LOW
7	WINDMILL CLOVER / NEW ANGEL'S BELL	500	LOW
8	WINDMILL CLOVER / NEW ANGEL'S BELL	500	LOW
9	WINDMILL CLOVER / NEW ANGEL'S BELL	500	LOW
10	WINDMILL CLOVER / NEW ANGEL'S BELL	500	LOW
11	WINDMILL CLOVER / NEW ANGEL'S BELL	500	LOW
12	WINDMILL CLOVER / NEW ANGEL'S BELL	500	LOW
13	WINDMILL CLOVER / NEW ANGEL'S BELL	500	LOW
14	WINDMILL CLOVER / NEW ANGEL'S BELL	500	LOW
15	WINDMILL CLOVER / NEW ANGEL'S BELL	500	LOW
16	WINDMILL CLOVER / NEW ANGEL'S BELL	500	LOW
17	WINDMILL CLOVER / NEW ANGEL'S BELL	500	LOW
18	WINDMILL CLOVER / NEW ANGEL'S BELL	500	LOW
19	WINDMILL CLOVER / NEW ANGEL'S BELL	500	LOW
20	WINDMILL CLOVER / NEW ANGEL'S BELL	500	LOW
21	WINDMILL CLOVER / NEW ANGEL'S BELL	500	LOW
22	WINDMILL CLOVER / NEW ANGEL'S BELL	500	LOW
23	WINDMILL CLOVER / NEW ANGEL'S BELL	500	LOW
24	WINDMILL CLOVER / NEW ANGEL'S BELL	500	LOW
25	WINDMILL CLOVER / NEW ANGEL'S BELL	500	LOW
26	WINDMILL CLOVER / NEW ANGEL'S BELL	500	LOW
27	WINDMILL CLOVER / NEW ANGEL'S BELL	500	LOW
28	WINDMILL CLOVER / NEW ANGEL'S BELL	500	LOW
29	WINDMILL CLOVER / NEW ANGEL'S BELL	500	LOW
30	WINDMILL CLOVER / NEW ANGEL'S BELL	500	LOW
31	WINDMILL CLOVER / NEW ANGEL'S BELL	500	LOW
32	WINDMILL CLOVER / NEW ANGEL'S BELL	500	LOW
33	WINDMILL CLOVER / NEW ANGEL'S BELL	500	LOW
34	WINDMILL CLOVER / NEW ANGEL'S BELL	500	LOW
35	WINDMILL CLOVER / NEW ANGEL'S BELL	500	LOW
36	WINDMILL CLOVER / NEW ANGEL'S BELL	500	LOW
37	WINDMILL CLOVER / NEW ANGEL'S BELL	500	LOW
38	WINDMILL CLOVER / NEW ANGEL'S BELL	500	LOW
39	WINDMILL CLOVER / NEW ANGEL'S BELL	500	LOW
40	WINDMILL CLOVER / NEW ANGEL'S BELL	500	LOW
41	WINDMILL CLOVER / NEW ANGEL'S BELL	500	LOW
42	WINDMILL CLOVER / NEW ANGEL'S BELL	500	LOW
43	WINDMILL CLOVER / NEW ANGEL'S BELL	500	LOW
44	WINDMILL CLOVER / NEW ANGEL'S BELL	500	LOW
45	WINDMILL CLOVER / NEW ANGEL'S BELL	500	LOW
46	WINDMILL CLOVER / NEW ANGEL'S BELL	500	LOW
47	WINDMILL CLOVER / NEW ANGEL'S BELL	500	LOW
48	WINDMILL CLOVER / NEW ANGEL'S BELL	500	LOW
49	WINDMILL CLOVER / NEW ANGEL'S BELL	500	LOW
50	WINDMILL CLOVER / NEW ANGEL'S BELL	500	LOW

COMPLIANCE STATEMENT

I have complied with the details of the site plan and all applicable codes and regulations. I am responsible for the accuracy of the information provided on this site plan.

[Signature] 2/13/23

LANDSCAPE/PLANTING NOTES

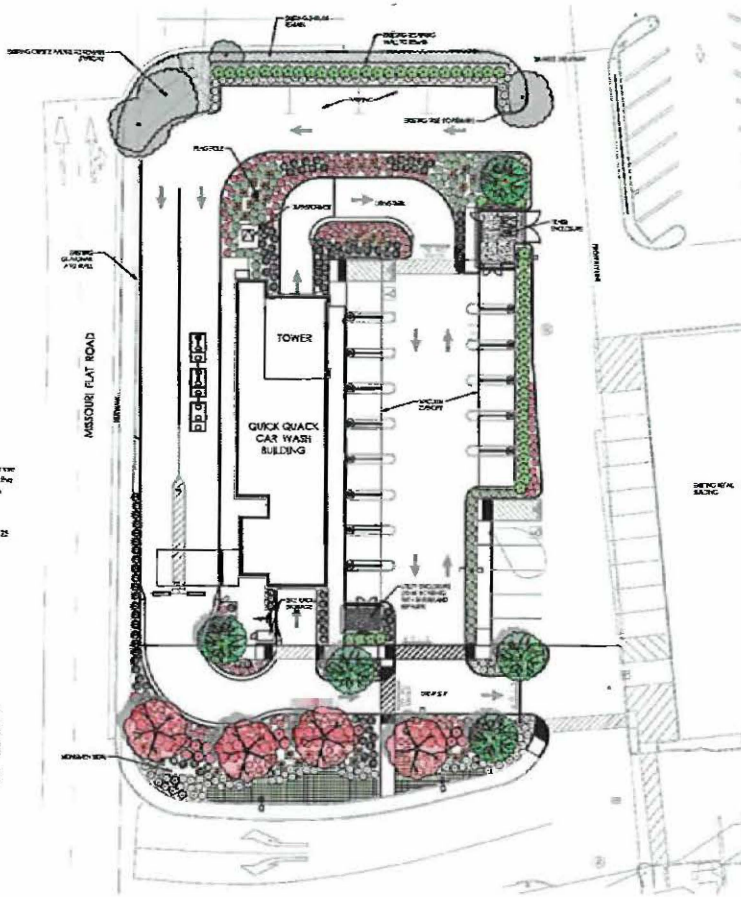
- All new and existing landscape plants shall be installed within 30 days of construction completion. The contractor shall be responsible for the maintenance of the plants until they are established.
- All new and existing landscape plants shall be installed within 30 days of construction completion. The contractor shall be responsible for the maintenance of the plants until they are established.
- Existing landscape plants to be removed shall be removed prior to construction.

Water Efficient Landscape Worksheet

LANDSCAPE PLANTING	TYPE	WATER USE (GAL)	WATER USE (GAL)	WATER USE (GAL)	WATER USE (GAL)	WATER USE (GAL)	WATER USE (GAL)	WATER USE (GAL)
WATER EFFICIENT PLANTS	3	100	100	100	100	100	100	100
WATER EFFICIENT PLANTS	3	100	100	100	100	100	100	100

RIAE Code Actions

Code Action	Code Action
1. Average 50% Per Year Air Quality Improvement	1. Average 50% Per Year Air Quality Improvement



LA Design Group, Inc.
1000 S. GARDEN STREET, SUITE 200
GARDEN GROVE, CA 92640
(714) 641-1111

OLIVE STREET
UNLICENSED ARCHITECT
1000 S. GARDEN STREET, SUITE 200
GARDEN GROVE, CA 92640
(714) 641-1111



QUICK QUACK CAR WASH
1000 S. GARDEN STREET, SUITE 200
GARDEN GROVE, CA 92640

DATE: _____
SCALE: _____
PROJECT NO.: _____
SHEET NO.: _____
DATE: _____

LANDSCAPE PLAN

L1

CUP22-0008/PD-R22-0002 Exhibit E: Site Plan Sheet Set

APPROVED
EL DORADO COUNTY
PLANNING COMMISSION
DATE JULY 13, 2023
BY KAREN L. GARNER/AS
EXECUTIVE SECRETARY



LA Design Group, Inc.
 81475 GARDNER CENTERVILLE, STE. 203
 DANA POINT, CA 92629
 (714) 261-6300



NOTE: This document is prepared in accordance with the California Building Code and the California Electrical Code. It is the responsibility of the user to verify the accuracy of the information contained herein and to consult the applicable codes and regulations.

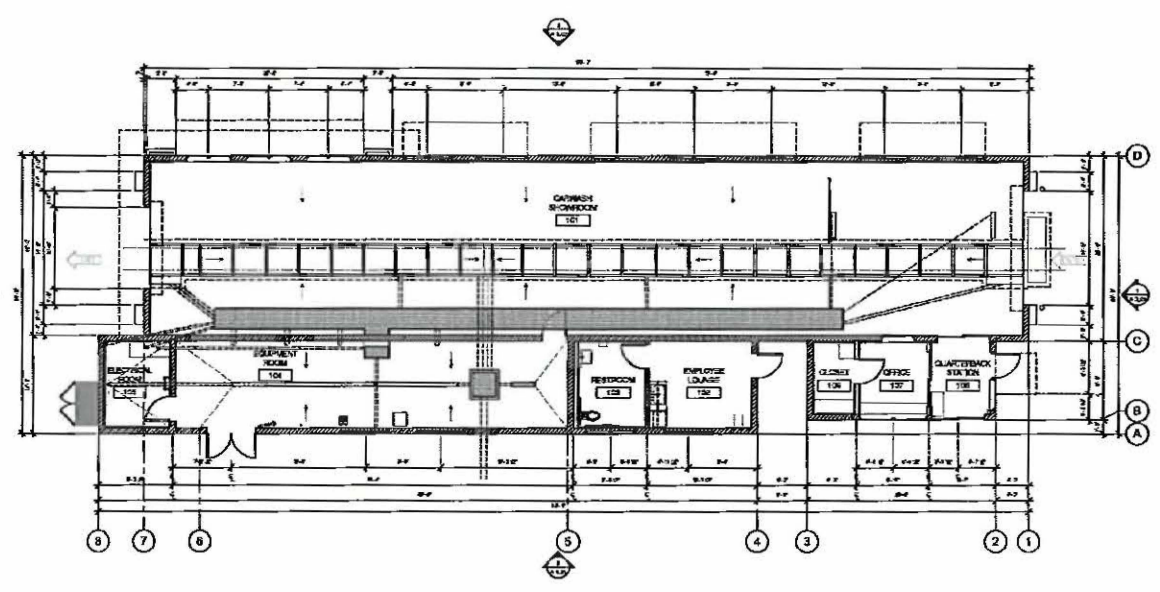


81705E 20-0001
 8000 HISSCUP FLAT ROAD
 PLACERVILLE, CA

QUICK QUACK CAR WASH
 81705E 20-0001
 8000 HISSCUP FLAT ROAD
 PLACERVILLE, CA 95367

DATE	DESCRIPTION	BY

FLOOR PLAN
 A2.01



CUP22-0008/PD-R22-0002 Exhibit E: Site Plan Sheet Set

FLOOR PLAN SCALE 1/8" = 1'-0" 1

APPROVED
 EL DORADO COUNTY
 PLANNING COMMISSION
 DATE JULY 13, 2023
 BY KAREN L. GARNER / ds
 EXECUTIVE SECRETARY



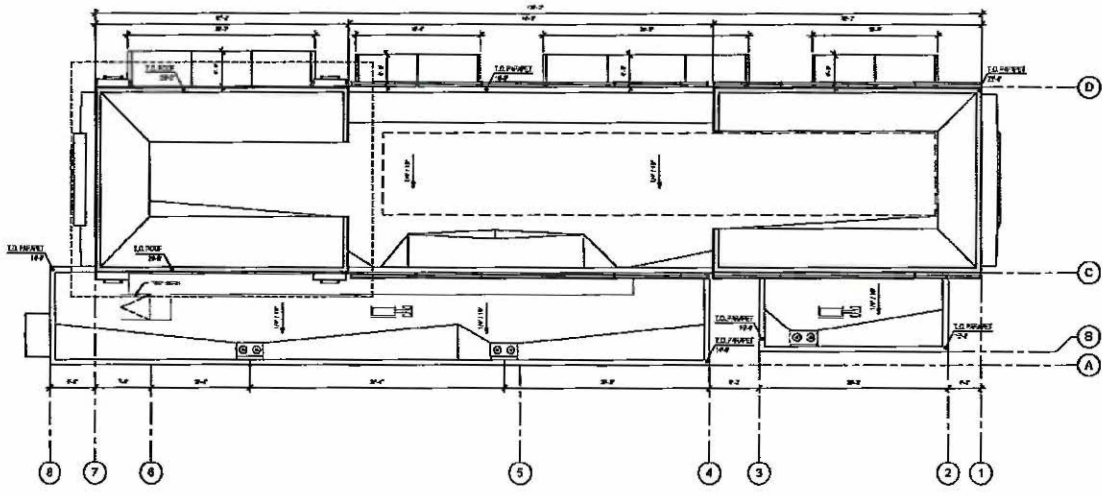
LA Design Group, Inc.
 2700 WEST 10TH STREET, SUITE 200
 LOS ANGELES, CA 90024
 (213) 833-3333



SCALE: THIS DRAWING IS TO BE CONSIDERED AS A PART OF THE SUBMITTAL. ANY CHANGES TO THE DRAWING SHALL BE INDICATED BY A REVISION TABLE. THE CONTRACTOR SHALL BE RESPONSIBLE FOR OBTAINING ALL NECESSARY PERMITS AND APPROVALS FROM THE APPLICABLE AGENCIES.



STORE 05-008
 8884 MUSCULAR FLAT ROAD
 PLACERVILLE, CA



CUP22-0008/PD-R22-0002 Exhibit E: Site Plan Sheet Set



ROOF PLAN SCALE 1/8" = 1'-0" 1

PROJECT: QUICK QUACK WASH
 LOCATION: 8884 MUSCULAR FLAT ROAD, PLACERVILLE, CA

DATE: _____
 DRAWN BY: _____
 CHECKED BY: _____
 SCALE: 1/8" = 1'-0"
 SHEET NO.: _____

ROOF PLAN

Sheet # A 2.02

APPROVED
 EL DORADO COUNTY
 PLANNING COMMISSION
 DATE July 13, 2023
 BY KAREN L. GARNER / ds
 EXECUTIVE SECRETARY



WEST ELEVATION SCALE 1/8" = 1'-0" 2



SOUTH ELEVATION SCALE 1/8" = 1'-0" 1

CUP22-0008/PD-R22-0002 Exhibit E: Site Plan Sheet Set



LA Design Group, Inc.
2351 GARDEN STREET, SUITE 200
DUNSMUIR, CA 94555
(925) 836-1339



THIS DOCUMENT IS THE PROPERTY OF LA DESIGN GROUP, INC. AND IS TO BE USED ONLY FOR THE PROJECT AND SITE SPECIFICALLY IDENTIFIED HEREIN. IT IS NOT TO BE REPRODUCED, COPIED, OR TRANSMITTED IN ANY FORM OR BY ANY MEANS, ELECTRONIC OR MECHANICAL, INCLUDING PHOTOCOPYING, RECORDING, OR BY ANY INFORMATION STORAGE AND RETRIEVAL SYSTEM, WITHOUT THE WRITTEN PERMISSION OF LA DESIGN GROUP, INC.

Approved:



PROJECT NO. 22-008
360 WILSON BLVD, SUITE 200
PUNICHERLE, CA 95067

Client: QUICK QUACK CAR WASH
THE QUICK QUACK CAR WASH
DUNSMUIR, CA 94555

Project: _____
Address: _____
City: _____
State: _____
Zip: _____

DATE	DESCRIPTION	BY

COLOR ELEVATIONS

Scale: _____

A 3.03

APPROVED
EL DORADO COUNTY
PLANNING COMMISSION
DATE JULY 13, 2023
BY KAREN L. GARNER
EXECUTIVE SECRETARY



SOUTHWEST PERSPECTIVE ILLUSTRATION SCALE 1/8" = 1'-0" 2



NORTHEAST PERSPECTIVE ILLUSTRATION SCALE 1/8" = 1'-0" 1

CUP22-0008/PD-R22-0002 Exhibit E: Site Plan Sheet Set



LA Design Group, Inc.
2001 GARDNER CENTER DRIVE, SUITE 200
DUBLINO, CA 94568
(925) 835-1200



NOTE: The information presented on this sheet is based on the information provided by the client. LA Design Group, Inc. is not responsible for the accuracy or completeness of the information provided. The user of this information is advised to verify the accuracy of the information with the client.

APPRECIATION



PROJECT NO. 22-002
3604 MISSOURI PLAZA ROAD
PLACERVILLE, CA 95667

Client: QUICK QUACK CAR WASH
1361 JAC-BLIND, STE. 204
HOLMISTON, CA 95024

Author: _____
Reviewer: _____
Date: _____

PROJECT NO. 22-002
DATE: 07/13/23
PROJECT NO. 22-002
PROJECT NO. 22-002
PROJECT NO. 22-002
PROJECT NO. 22-002
PROJECT NO. 22-002
PROJECT NO. 22-002
PROJECT NO. 22-002
PROJECT NO. 22-002
PROJECT NO. 22-002

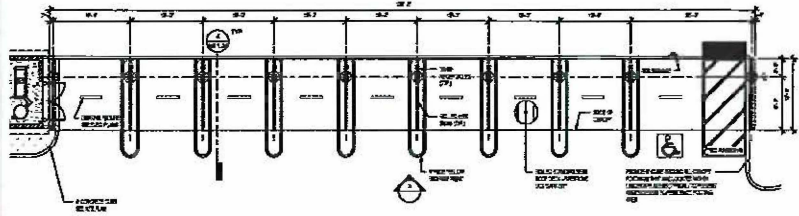
PERSPECTIVES

SCALE: A 3.05

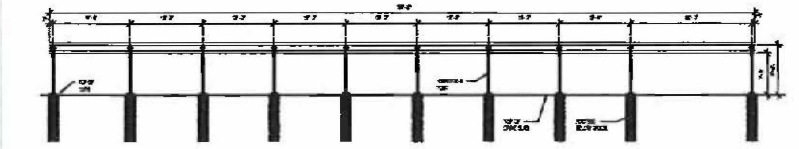
APPROVED
EL DORADO COUNTY
PLANNING COMMISSION
DATE JULY 13, 2023
BY KAREN L. GARNER/ds
EXECUTIVE SECRETARY



WEST VACUUM CANOPY PHOTO SCALE 15



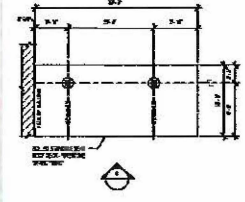
WEST VACUUM CANOPY PLAN SCALE 4



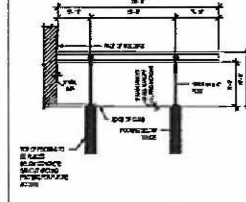
WEST VACUUM CANOPY ELEVATION SCALE 3



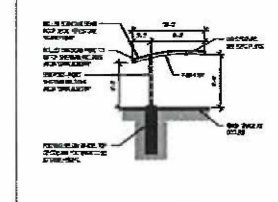
PAY STATION CANOPY PHOTO SCALE 13



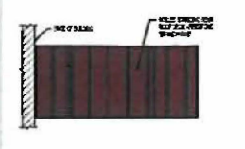
PAY STATION PLAN SCALE 10



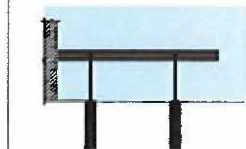
PAY STATION ELEVATION SCALE 6



TYPICAL CANOPY SECTION SCALE 2



PAY STATION COLOR ROOF PLAN SCALE 9



PAY STATION COLORED ELEVATION SCALE 5



TYPICAL CANOPY SIDE ELEVATION SCALE 1



LA Design Group, Inc.
2241 WEST 10TH STREET, SUITE 200
DORADO, CA 95119
(415) 554-1000



Professional Engineer
C. EISSA
No. 44394
State of California
Civil Engineering



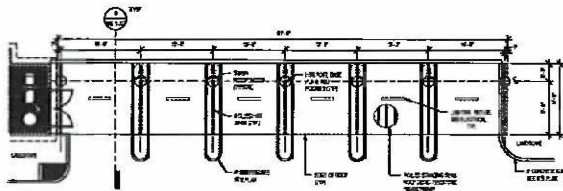
QUICK QUACK CARWASH
1000 W. 14TH ST
SACRAMENTO, CA 95811

PROJECT NO.	24-000
DATE	07/13/23
PROJECT NAME	QUICK QUACK CARWASH
LOCATION	1000 W. 14TH ST, SACRAMENTO, CA
OWNER	
DESIGNER	
DATE	
SCALE	
BY	
CHECKED	
DATE	

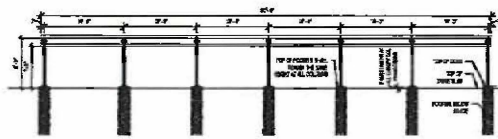
WEST VACUUM CANOPY

AS 1.06

APPROVED
EL DORADO COUNTY
PLANNING COMMISSION
DATE July 13, 2023
BY KAREN L. GARNER
EXECUTIVE SECRETARY



EAST VACUUM CANOPY PLAN SCALE 1/8" = 1'-0" 4



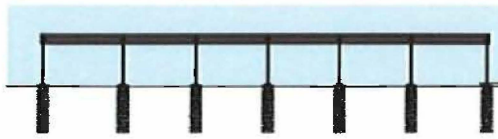
EAST VACUUM CANOPY ELEVATION SCALE 1/8" = 1'-0" 3



EAST VACUUM CANOPY COLORED ROOF PLAN SCALE 1/8" = 1'-0" 2



TYP CANOPY SECTION SCALE 1/8" = 1'-0" 17



EAST VACUUM CANOPY COLORED ELEVATION SCALE 1/8" = 1'-0" 1

CUP22-000/PD-R22-0002 Exhibit E: Site Plan Sheet Set



LA Design Group, Inc.
 2141 SOUTHWEST CORNER CORVA, WEE, 250
 DUNWOODY, GA 30118
 (770) 400-8229



NOTE: The user shall be responsible for obtaining all necessary permits and approvals from the appropriate authorities. The user shall be responsible for obtaining all necessary permits and approvals from the appropriate authorities.



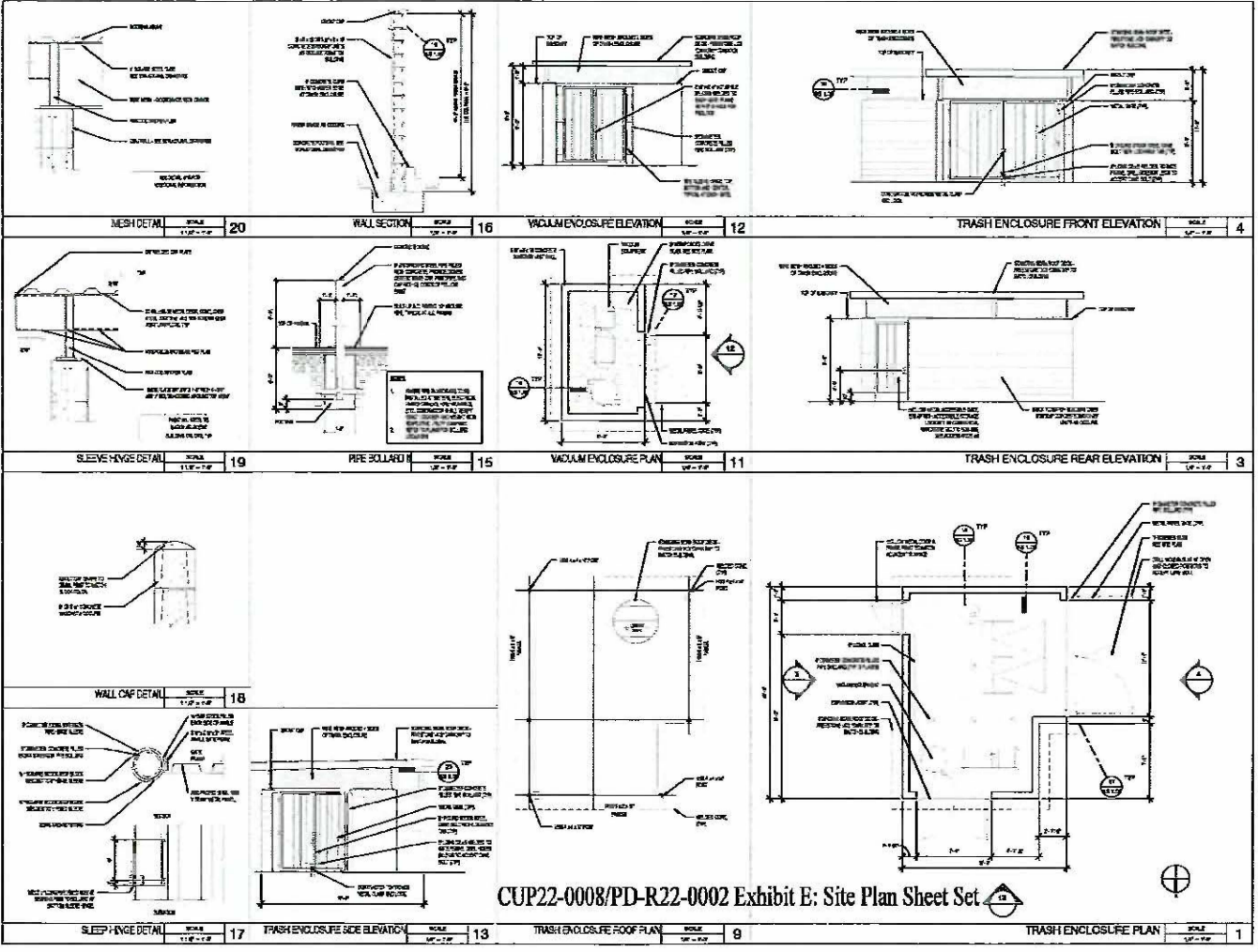
QUICK QUACK CARWASH
 394 HISSCOURT LANE ROAD
 FARMVILLE, GA 30205

DATE	ISSUED
BY	DESIGNED
CHECKED	PROJECT
APPROVED	SCALE
REVISIONS	DATE

EAST VACUUM CANOPY

AS 1.07

APPROVED
 EL DORADO COUNTY
 PLANNING COMMISSION
 DATE July 13, 2023
 BY KAREN L. GARNER/CW
 EXECUTIVE SECRETARY



PROJECT: QUICK QUACK CAR WASH
 8884 MASCULIN BLVD ROAD
 PLACEMILLE, CA 95662

DATE: _____
 DRAWN BY: _____
 CHECKED BY: _____
 APPROVED BY: _____

SHEET NO. _____ OF _____

AS 1.08

CUP22-0008/PD-R22-0002 Exhibit E: Site Plan Sheet Set

APPROVED
 EL DORADO COUNTY
 PLANNING COMMISSION

DATE July 13, 2024
 BY KAREN L. GARNER/CS
 EXECUTIVE SECRETARY



CP - CEMENT PLASTER COLOR COAT



P1 - SHERWIN WILLIAMS #6034 DARK AUBURN



P2 - SHERWIN WILLIAMS #6374 'TORCHLIGHT'



P3 - SHERWIN WILLIAMS #6120 'BELIEVABLE BUFF'



P4 - SHERWIN WILLIAMS #7004 'SNOWBOUND'



P5 - SHERWIN WILLIAMS #6122 'CAMELBACK'



**W1 - EXTERIOR STOREFRONT SYSTEM
CLEAR ANODIZED ALUMINUM STOREFRONT**



**ST - STONE VENEER TRIM SILL, ANGELUS
BLOCK - 'PLACER CREEK BURNISHED'**



**SV - STONE VENEER, CORONADO STONE
'QUICK STACK - CAMEL MOUNTAIN'**

FINISH AND MATERIAL BOARD

CUP22-0008/PD-R22-0002 Exhibit E: Site Plan Sheet Set



LADG | LA Design Group, Inc.

20074 BUCKINGHAM CENTER DRIVE, STE. 100 | CHICO, CA 95926 | (530) 891-1000 | WWW.LADG.COM

© LA Design Group, Inc. 2023. ALL RIGHTS RESERVED.
This document is prepared as a conceptual design and is not intended for construction. It is subject to change without notice. The client is responsible for obtaining all necessary permits and approvals.

QUICK QUACK CAR WASH

3964 MISSOURI FLAT ROAD
PLACERVILLE, CA 95667



LADG JOB #:	211001
DATE:	09/10/2023
REVISIONS:	

APPROVED
EL DORADO COUNTY
PLANNING COMMISSION

DATE JULY 13, 2023

BY KAREN L. GARNER/dw
EXECUTIVE SECRETARY